

APPENDIX F

AB 52 Consultation Documentation

September 16, 2022

***Via U.S. Mail and Certified Mail. Return Receipt
Requested: No. 7019 2970 0001 3676 8554 &
9590 9402 7419 2055 5564 58***

Gabrieleno Band of Mission Indians - Kizh Nation

Andrew Salas, Chairperson

P.O. Box 393

Covina, CA, 91723

Subject: Invitation to Begin Assembly Bill (AB) 52 Consultation for the Green Trucking Facility and Container Project, City of Long Beach, California.

Dear Mr. Salas,

The City of Long Beach (City) is requesting the initiation of AB 52 consultation on the Green Trucking Facility and Container Storage Project (project) located at 1711 Harbor Avenue and 1515 West 17th Street. Please consider this letter and preliminary project information as the initiation of the AB 52 consultation under the California Environmental Quality Act (CEQA).

Project Description

The project would occur on two properties; one located at 1711 Harbor Avenue and the other at 1515 West 17th Street. These two properties make up the project site. The project site is currently developed with buildings, storage areas, surface parking, and ancillary infrastructure, including a water tower, for commercial and industrial uses associated with the former operations of the Custom Fiberglass Manufacturing Company DBA Snug Top (Snug Top).

The project proposes the demolition of the existing buildings and associated equipment on-site to construct a storage yard facility for the temporary stowage of shipping containers en route to and from the Port of Long Beach (POLB). The project will include approximately 210 container stalls, double-stacked, to accommodate 420 shipping containers at 1711 Harbor Avenue and approximately 10 stalls, double-stacked, to accommodate 20 shipping containers at 1515 West 17th Street, for a total of 220 stalls. All shipping container stalls would be topped with a minimum six-inch load-bearing base per code requirements to accommodate stacked shipping containers, at a maximum of two containers high.

The project proposes to retain and modify an existing building located in the southeast corner of the site addressed 1711 Harbor Avenue for office use. The existing structure would receive a 761-foot addition as well as an interior remodel to support project operations. Additional site improvements would include on-site parking for trucks, vehicles, and bicycles, zero-emission charge stations for on-site trucks, plugins for refrigerated container charging, new drought-resistant landscape buffers, and fencing and railing. Project implementation would include



Assembly Bill (AB) 52 Consultation
1711 Harbor Avenue & 1515 W. 17th Street
9/16/2022

two Conditional Use Permits (one for each property) and a Lot Merger for consolidation of the three parcels that comprise 1515 West 17th Street.

Implementation of the proposed project would provide additional support for the global and regional supply chain, propel the Port of Long Beach (POLB) and the City toward more environmentally sustainable design and practices, and provide additional employment opportunities in the City.

The City is preparing an Initial Study/Mitigated Negative Declaration under CEQA for the proposed project. Please see the attached figures depicting the project site.

You are a traditionally and culturally affiliated California Native American tribal representative that has requested notice of projects where AB 52 applies within the City. We are requesting any information that you may have regarding tribal cultural resources (as defined by Public Resources Code 21074) within the project area so that this information can be incorporated into the planning phase of the project. Please respond within 30 days of the date of this letter.

Your comments and concerns are important to the City and we look forward to hearing from you. I remain available to discuss any questions, comments or concerns you might have regarding the project. Due to COVID-19, in person meetings are limited. However, I am available to schedule a teleconference to discuss if needed. Please feel free to contact me with any questions via email at sergio.gutierrez@longbeach.gov, at (562) 570-5934 or you may contact the City by letter directed to:

Sergio Gutierrez, Planner III
City of Long Beach
Development Services Department, Planning Bureau
411 W. Ocean Boulevard, 3rd Floor
Long Beach, CA 90802

Sincerely,

Sergio Gutierrez

Sergio Gutierrez
Planner III
(562) 570-5934
Sergio.Gutierrez@longbeach.gov

Figure 1: Regional Vicinity

Figure 2: Project Vicinity

Figure 3: Project Area



★ Project Location

GREEN TRUCKING FACILITY AND CONTAINER PROJECT
LONG BEACH, CA

Regional Vicinity

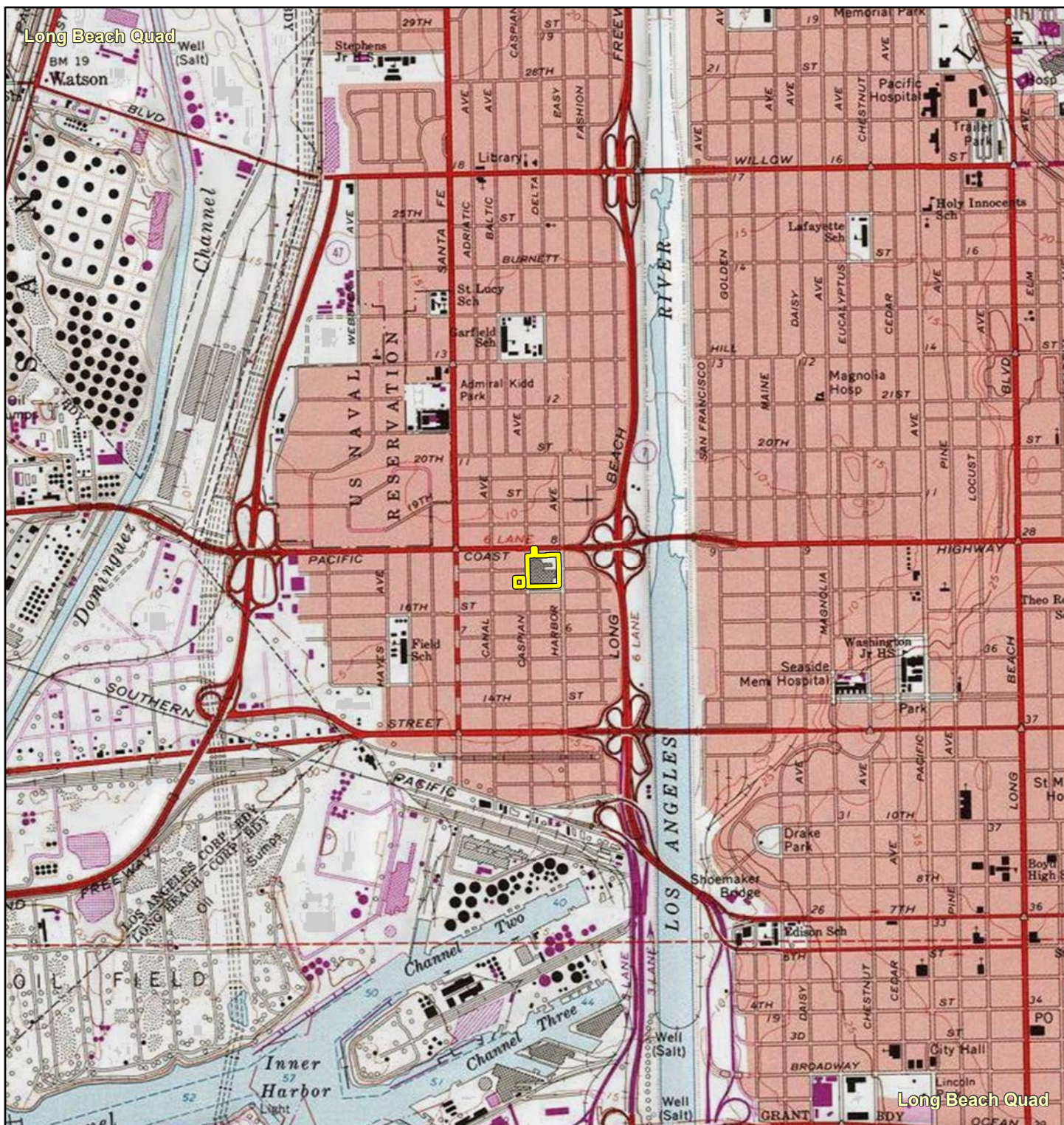
Michael Baker
INTERNATIONAL



0 2.5 5 10
Miles

Source: Esri, ArcGIS Online, National Geographic World Map: Long Beach, California

Figure 1



GREEN TRUCKING FACILITY AND CONTAINER PROJECT
LONG BEACH, CA

Project Vicinity

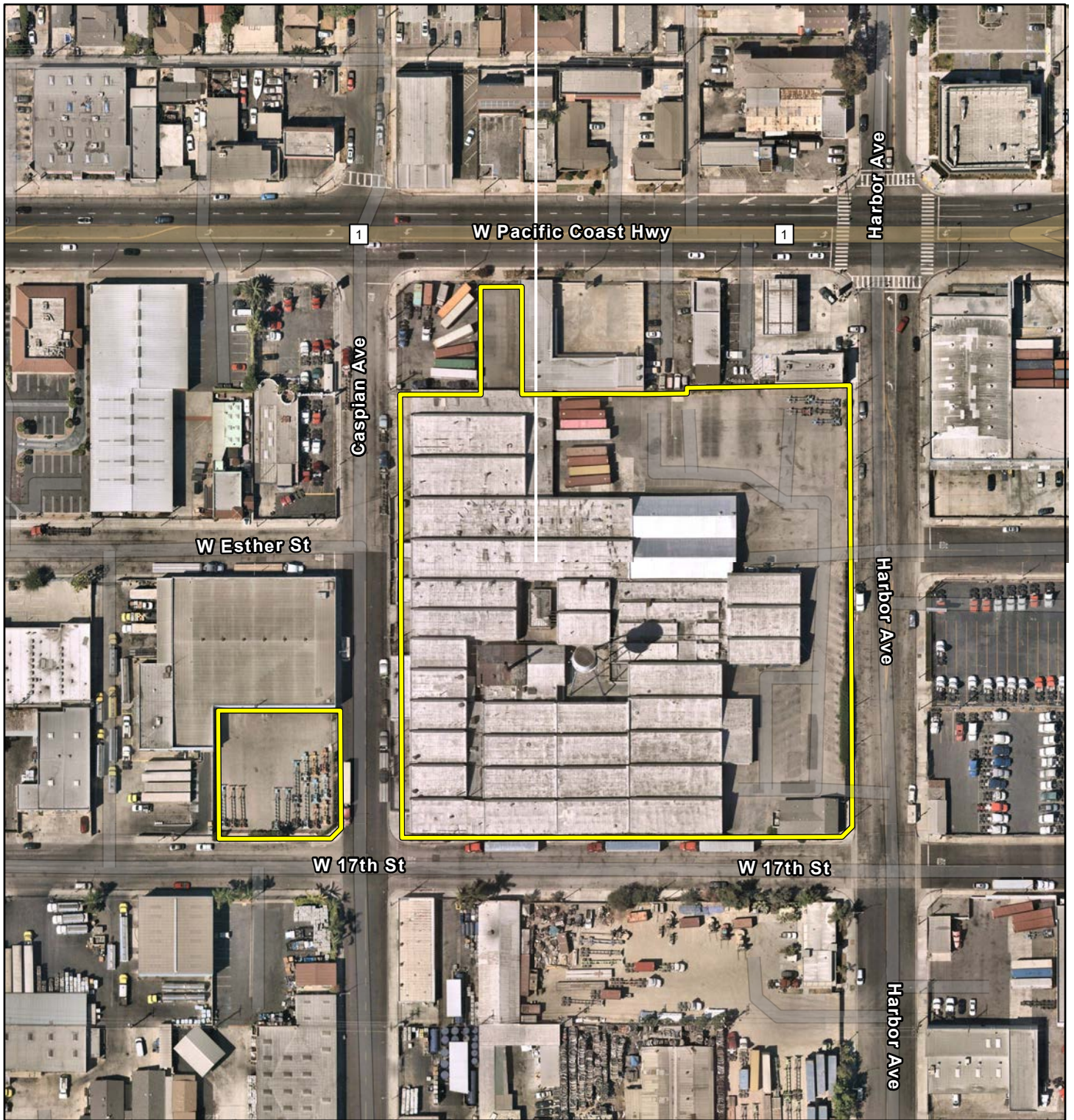
Michael Baker
INTERNATIONAL



0 0.13 0.25 0.5
Miles

Source: Esri, ArcGIS Online, USGS 7.5-Minute topographic quadrangle maps: Long Beach, California

Figure 2



 Project Area

GREEN TRUCKING FACILITY AND CONTAINER PROJECT
LONG BEACH, CA

Project Area

Michael Baker
INTERNATIONAL



0 50 100 200
Feet

Source: Esri, ArcGIS Online, 2021 Nearmap Imagery: Long Beach, California

Figure 3

September 16, 2022

Via U.S. Mail and Certified Mail. Return Receipt

***Requested: No. 7021 1970 0001 8673 4644 &
9590 9402 7419 2055 5564 72***

Gabrielino /Tongva Nation

Sandonne Goad, Chairperson
106 1/2 Judge John Aiso St., #231
Los Angeles, CA, 90012

Subject: Invitation to Begin Assembly Bill (AB) 52 Consultation for the Green Trucking Facility and Container Project, City of Long Beach, California.

Dear Ms. Goad,

The City of Long Beach (City) is requesting the initiation of AB 52 consultation on the Green Trucking Facility and Container Storage Project (project) located at 1711 Harbor Avenue and 1515 West 17th Street. Please consider this letter and preliminary project information as the initiation of the AB 52 consultation under the California Environmental Quality Act (CEQA).

Project Description

The project would occur on two properties; one located at 1711 Harbor Avenue and the other at 1515 West 17th Street. These two properties make up the project site. The project site is currently developed with buildings, storage areas, surface parking, and ancillary infrastructure, including a water tower, for commercial and industrial uses associated with the former operations of the Custom Fiberglass Manufacturing Company DBA Snug Top (Snug Top).

The project proposes the demolition of the existing buildings and associated equipment on-site to construct a storage yard facility for the temporary stowage of shipping containers en route to and from the Port of Long Beach (POLB). The project will include approximately 210 container stalls, double-stacked, to accommodate 420 shipping containers at 1711 Harbor Avenue and approximately 10 stalls, double-stacked, to accommodate 20 shipping containers at 1515 West 17th Street, for a total of 220 stalls. All shipping container stalls would be topped with a minimum six-inch load-bearing base per code requirements to accommodate stacked shipping containers, at a maximum of two containers high.

The project proposes to retain and modify an existing building located in the southeast corner of the site addressed 1711 Harbor Avenue for office use. The existing structure would receive a 761-foot addition as well as an interior remodel to support project operations. Additional site improvements would include on-site parking for trucks, vehicles, and bicycles, zero-emission charge stations for on-site trucks, plugins for refrigerated container charging, new drought-resistant landscape buffers, and fencing and railing. Project implementation would include



Assembly Bill (AB) 52 Consultation
1711 Harbor Avenue & 1515 W. 17th Street
9/16/2022

two Conditional Use Permits (one for each property) and a Lot Merger for consolidation of the three parcels that comprise 1515 West 17th Street.

Implementation of the proposed project would provide additional support for the global and regional supply chain, propel the Port of Long Beach (POLB) and the City toward more environmentally sustainable design and practices, and provide additional employment opportunities in the City.

The City is preparing an Initial Study/Mitigated Negative Declaration under CEQA for the proposed project. Please see the attached figures depicting the project site.

You are a traditionally and culturally affiliated California Native American tribal representative that has requested notice of projects where AB 52 applies within the City. We are requesting any information that you may have regarding tribal cultural resources (as defined by Public Resources Code 21074) within the project area so that this information can be incorporated into the planning phase of the project. Please respond within 30 days of the date of this letter.

Your comments and concerns are important to the City and we look forward to hearing from you. I remain available to discuss any questions, comments or concerns you might have regarding the project. Due to COVID-19, in person meetings are limited. However, I am available to schedule a teleconference to discuss if needed. Please feel free to contact me with any questions via email at sergio.gutierrez@longbeach.gov, at (562) 570-5934 or you may contact the City by letter directed to:

Sergio Gutierrez, Planner III
City of Long Beach
Development Services Department, Planning Bureau
411 W. Ocean Boulevard, 3rd Floor
Long Beach, CA 90802

Sincerely,

Sergio Gutierrez

Sergio Gutierrez
Planner III
(562) 570-5934
Sergio.Gutierrez@longbeach.gov

Figure 1: Regional Vicinity
Figure 2: Project Vicinity
Figure 3: Project Area



Project Location

GREEN TRUCKING FACILITY AND CONTAINER PROJECT
LONG BEACH, CA

Regional Vicinity

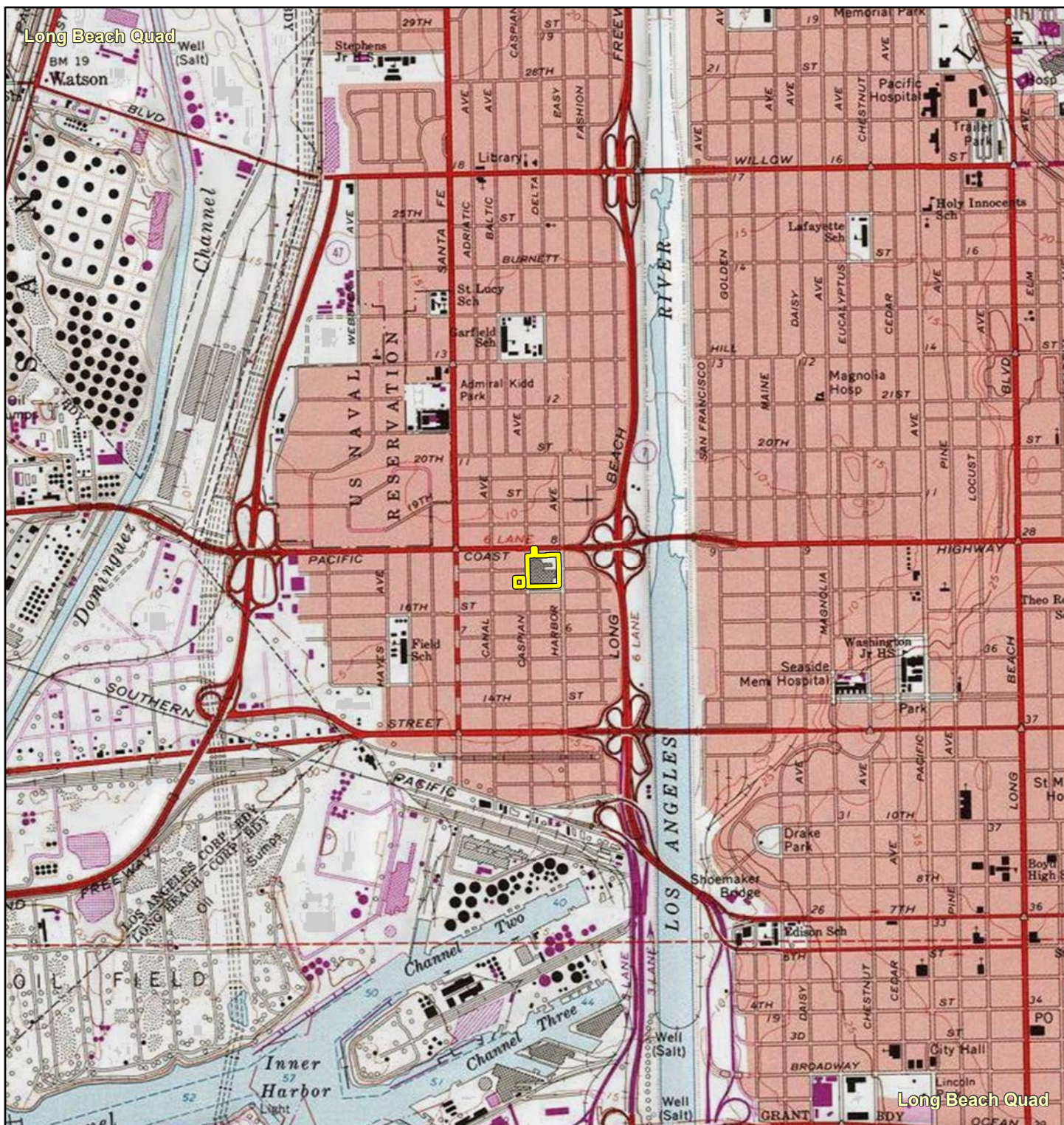
Michael Baker
INTERNATIONAL



0 2.5 5 10
Miles

Source: Esri, ArcGIS Online, National Geographic World Map: Long Beach, California

Figure 1



GREEN TRUCKING FACILITY AND CONTAINER PROJECT
LONG BEACH, CA

Project Vicinity

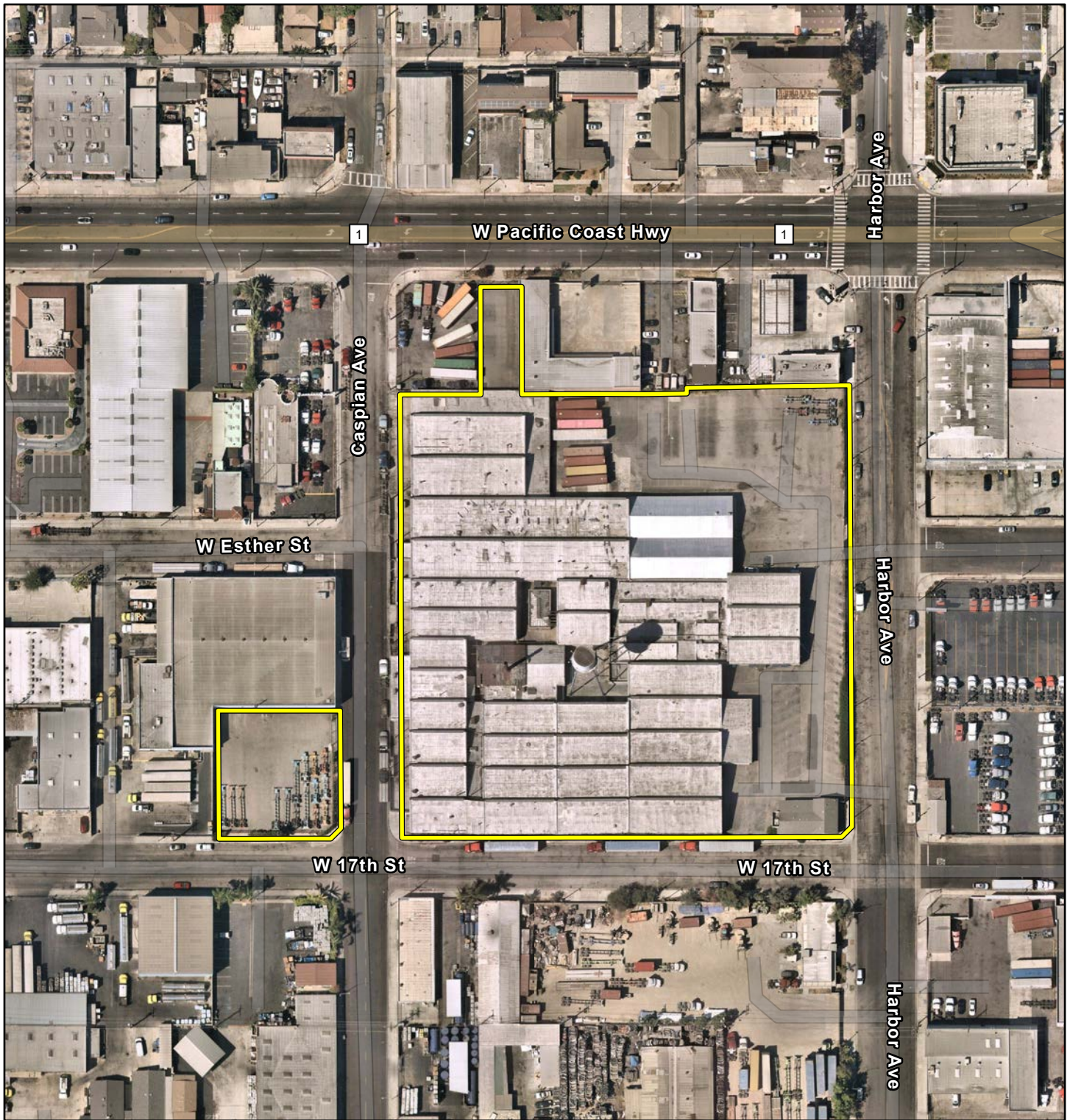
Michael Baker
INTERNATIONAL



0 0.13 0.25 0.5
Miles

Source: Esri, ArcGIS Online, USGS 7.5-Minute topographic quadrangle maps: Long Beach, California

Figure 2



 Project Area

GREEN TRUCKING FACILITY AND CONTAINER PROJECT
LONG BEACH, CA

Project Area

Michael Baker
INTERNATIONAL



0 50 100 200
Feet

Source: Esri, ArcGIS Online, 2021 Nearmap Imagery: Long Beach, California

Figure 3

September 16, 2022

***Via U.S. Mail and Certified Mail. Return Receipt
Requested: No. 7021 2970 0001 3676 8530 &
9590 9402 7419 2055 5564 41***

Gabrielino-Tongva Tribe

Charles Alvarez,
23454 Vanowen Street
West Hills, CA, 91307

Subject: Invitation to Begin Assembly Bill (AB) 52 Consultation for the Green Trucking Facility and Container Project, City of Long Beach, California.

Dear Mr. Alvarez,

The City of Long Beach (City) is requesting the initiation of AB 52 consultation on the Green Trucking Facility and Container Storage Project (project) located at 1711 Harbor Avenue and 1515 West 17th Street. Please consider this letter and preliminary project information as the initiation of the AB 52 consultation under the California Environmental Quality Act (CEQA).

Project Description

The project would occur on two properties; one located at 1711 Harbor Avenue and the other at 1515 West 17th Street. These two properties make up the project site. The project site is currently developed with buildings, storage areas, surface parking, and ancillary infrastructure, including a water tower, for commercial and industrial uses associated with the former operations of the Custom Fiberglass Manufacturing Company DBA Snug Top (Snug Top).

The project proposes the demolition of the existing buildings and associated equipment on-site to construct a storage yard facility for the temporary stowage of shipping containers en route to and from the Port of Long Beach (POLB). The project will include approximately 210 container stalls, double-stacked, to accommodate 420 shipping containers at 1711 Harbor Avenue and approximately 10 stalls, double-stacked, to accommodate 20 shipping containers at 1515 West 17th Street, for a total of 220 stalls. All shipping container stalls would be topped with a minimum six-inch load-bearing base per code requirements to accommodate stacked shipping containers, at a maximum of two containers high.

The project proposes to retain and modify an existing building located in the southeast corner of the site addressed 1711 Harbor Avenue for office use. The existing structure would receive a 761-foot addition as well as an interior remodel to support project operations. Additional site improvements would include on-site parking for trucks, vehicles, and bicycles, zero-emission charge stations for on-site trucks, plugins for refrigerated container charging, new drought-resistant landscape buffers, and fencing and railing. Project implementation would include



Assembly Bill (AB) 52 Consultation
1711 Harbor Avenue & 1515 W. 17th Street
9/16/2022

two Conditional Use Permits (one for each property) and a Lot Merger for consolidation of the three parcels that comprise 1515 West 17th Street.

Implementation of the proposed project would provide additional support for the global and regional supply chain, propel the Port of Long Beach (POLB) and the City toward more environmentally sustainable design and practices, and provide additional employment opportunities in the City.

The City is preparing an Initial Study/Mitigated Negative Declaration under CEQA for the proposed project. Please see the attached figures depicting the project site.

You are a traditionally and culturally affiliated California Native American tribal representative that has requested notice of projects where AB 52 applies within the City. We are requesting any information that you may have regarding tribal cultural resources (as defined by Public Resources Code 21074) within the project area so that this information can be incorporated into the planning phase of the project. Please respond within 30 days of the date of this letter.

Your comments and concerns are important to the City and we look forward to hearing from you. I remain available to discuss any questions, comments or concerns you might have regarding the project. Due to COVID-19, in person meetings are limited. However, I am available to schedule a teleconference to discuss if needed. Please feel free to contact me with any questions via email at sergio.gutierrez@longbeach.gov, at (562) 570-5934 or you may contact the City by letter directed to:

Sergio Gutierrez, Planner III
City of Long Beach
Development Services Department, Planning Bureau
411 W. Ocean Boulevard, 3rd Floor
Long Beach, CA 90802

Sincerely,

Sergio Gutierrez

Sergio Gutierrez
Planner III
(562) 570-5934
Sergio.Gutierrez@longbeach.gov

Figure 1: Regional Vicinity

Figure 2: Project Vicinity

Figure 3: Project Area



Project Location

GREEN TRUCKING FACILITY AND CONTAINER PROJECT
LONG BEACH, CA

Regional Vicinity

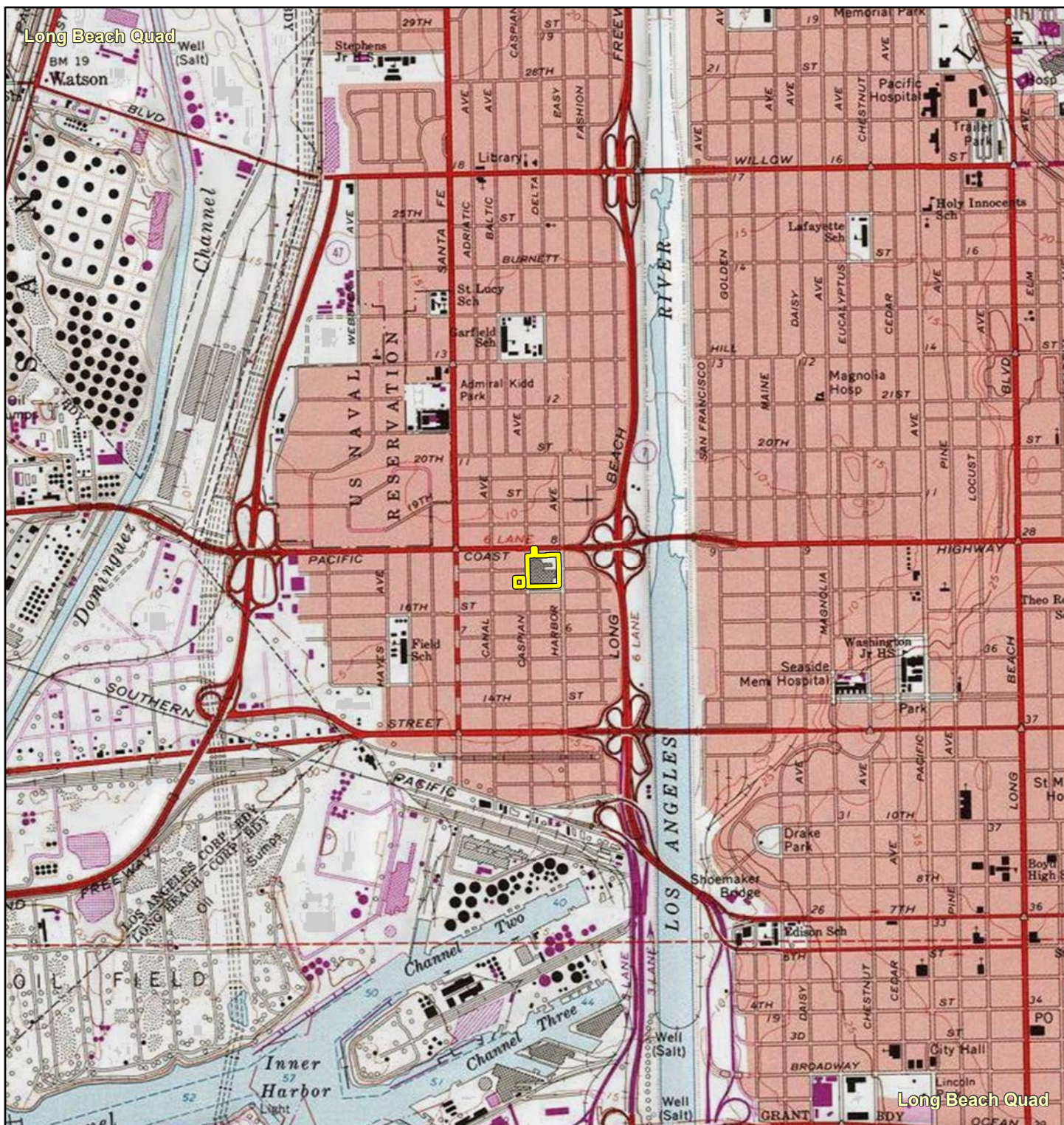
Michael Baker
INTERNATIONAL



0 2.5 5 10
Miles

Source: Esri, ArcGIS Online, National Geographic World Map: Long Beach, California

Figure 1



GREEN TRUCKING FACILITY AND CONTAINER PROJECT
LONG BEACH, CA

Project Vicinity

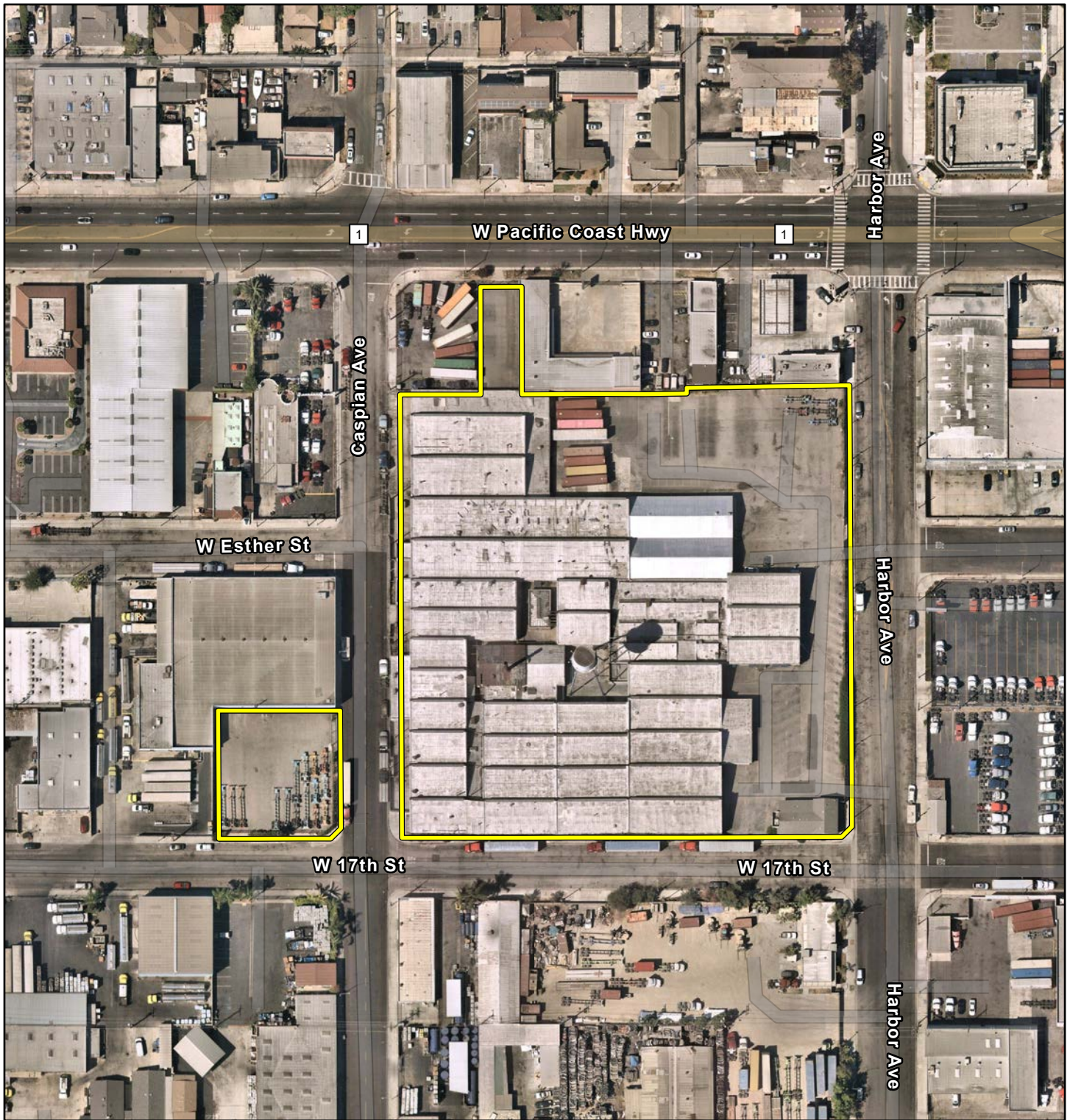
Michael Baker
INTERNATIONAL



0 0.13 0.25 0.5
Miles

Source: Esri, ArcGIS Online, USGS 7.5-Minute topographic quadrangle maps: Long Beach, California

Figure 2



 Project Area

GREEN TRUCKING FACILITY AND CONTAINER PROJECT
LONG BEACH, CA

Project Area

Michael Baker
INTERNATIONAL



0 50 100 200
Feet

Source: Esri, ArcGIS Online, 2021 Nearmap Imagery: Long Beach, California

Figure 3

September 16, 2022

***Via U.S. Mail and Certified Mail. Return Receipt
Requested: No. 7021 1970 0001 8673 4651 &
9590 9402 7419 2055 5564 89***

Gabrielino Tongva Indians of California Tribal Council

Robert Dorame, Chairperson

P.O. Box 490

Bellflower, CA, 90707

Subject: Invitation to Begin Assembly Bill (AB) 52 Consultation for the Green Trucking Facility and Container Project, City of Long Beach, California.

Dear Mr. Dorame,

The City of Long Beach (City) is requesting the initiation of AB 52 consultation on the Green Trucking Facility and Container Storage Project (project) located at 1711 Harbor Avenue and 1515 West 17th Street. Please consider this letter and preliminary project information as the initiation of the AB 52 consultation under the California Environmental Quality Act (CEQA).

Project Description

The project would occur on two properties; one located at 1711 Harbor Avenue and the other at 1515 West 17th Street. These two properties make up the project site. The project site is currently developed with buildings, storage areas, surface parking, and ancillary infrastructure, including a water tower, for commercial and industrial uses associated with the former operations of the Custom Fiberglass Manufacturing Company DBA Snug Top (Snug Top).

The project proposes the demolition of the existing buildings and associated equipment on-site to construct a storage yard facility for the temporary stowage of shipping containers en route to and from the Port of Long Beach (POLB). The project will include approximately 210 container stalls, double-stacked, to accommodate 420 shipping containers at 1711 Harbor Avenue and approximately 10 stalls, double-stacked, to accommodate 20 shipping containers at 1515 West 17th Street, for a total of 220 stalls. All shipping container stalls would be topped with a minimum six-inch load-bearing base per code requirements to accommodate stacked shipping containers, at a maximum of two containers high.

The project proposes to retain and modify an existing building located in the southeast corner of the site addressed 1711 Harbor Avenue for office use. The existing structure would receive a 761-foot addition as well as an interior remodel to support project operations. Additional site improvements would include on-site parking for trucks, vehicles, and bicycles, zero-emission charge stations for on-site trucks, plugins for refrigerated container charging, new drought-resistant landscape buffers, and fencing and railing. Project implementation would include



Assembly Bill (AB) 52 Consultation
1711 Harbor Avenue & 1515 W. 17th Street
9/16/2022

two Conditional Use Permits (one for each property) and a Lot Merger for consolidation of the three parcels that comprise 1515 West 17th Street.

Implementation of the proposed project would provide additional support for the global and regional supply chain, propel the Port of Long Beach (POLB) and the City toward more environmentally sustainable design and practices, and provide additional employment opportunities in the City.

The City is preparing an Initial Study/Mitigated Negative Declaration under CEQA for the proposed project. Please see the attached figures depicting the project site.

You are a traditionally and culturally affiliated California Native American tribal representative that has requested notice of projects where AB 52 applies within the City. We are requesting any information that you may have regarding tribal cultural resources (as defined by Public Resources Code 21074) within the project area so that this information can be incorporated into the planning phase of the project. Please respond within 30 days of the date of this letter.

Your comments and concerns are important to the City and we look forward to hearing from you. I remain available to discuss any questions, comments or concerns you might have regarding the project. Due to COVID-19, in person meetings are limited. However, I am available to schedule a teleconference to discuss if needed. Please feel free to contact me with any questions via email at sergio.gutierrez@longbeach.gov, at (562) 570-5934 or you may contact the City by letter directed to:

Sergio Gutierrez, Planner III
City of Long Beach
Development Services Department, Planning Bureau
411 W. Ocean Boulevard, 3rd Floor
Long Beach, CA 90802

Sincerely,

Sergio Gutierrez

Sergio Gutierrez
Planner III
(562) 570-5934
Sergio.Gutierrez@longbeach.gov

Figure 1: Regional Vicinity
Figure 2: Project Vicinity
Figure 3: Project Area



Project Location

GREEN TRUCKING FACILITY AND CONTAINER PROJECT
LONG BEACH, CA

Regional Vicinity

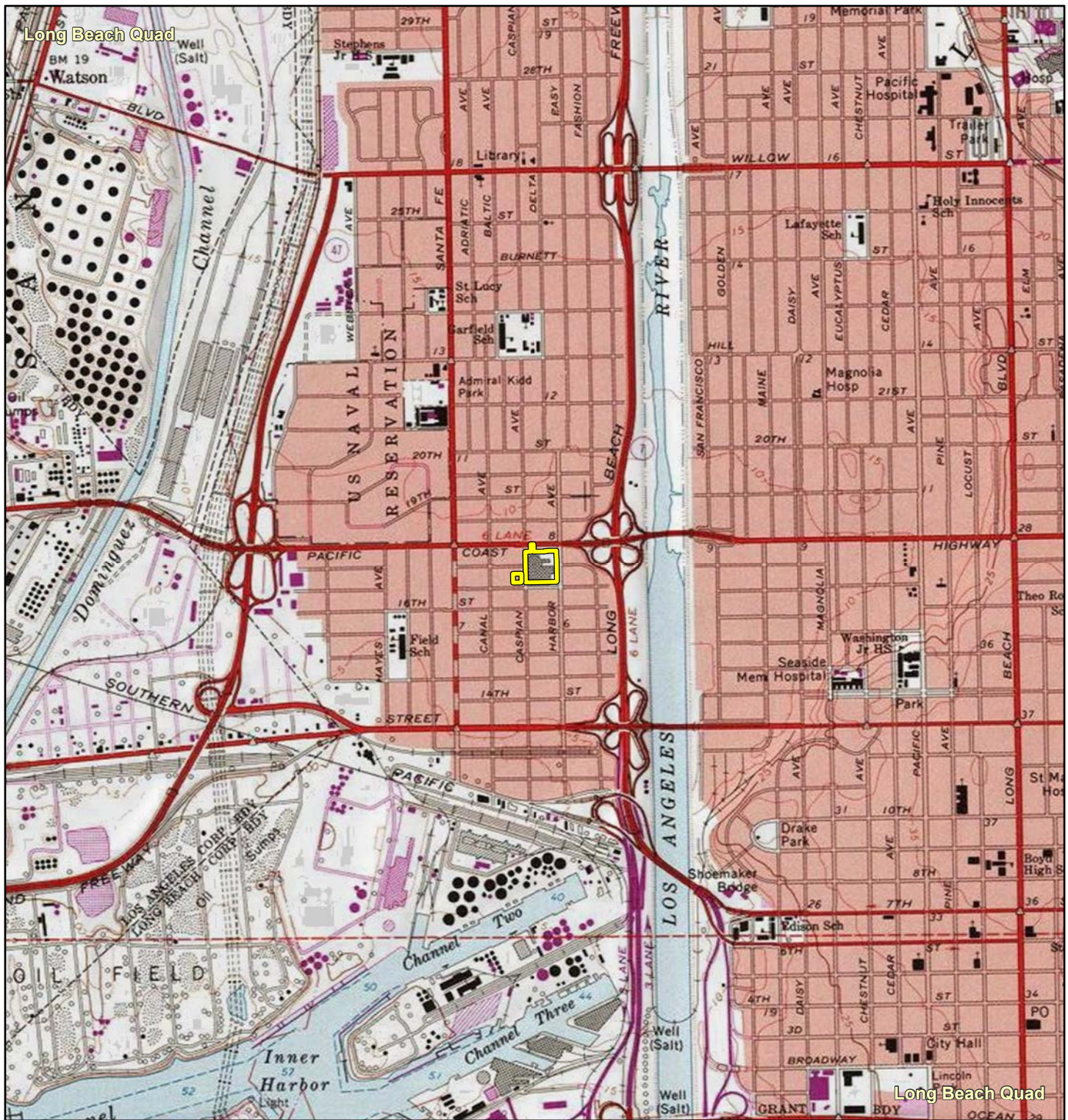
Michael Baker
INTERNATIONAL



0 2.5 5 10
Miles

Source: Esri, ArcGIS Online, National Geographic World Map: Long Beach, California

Figure 1



GREEN TRUCKING FACILITY AND CONTAINER PROJECT
LONG BEACH, CA

Project Vicinity

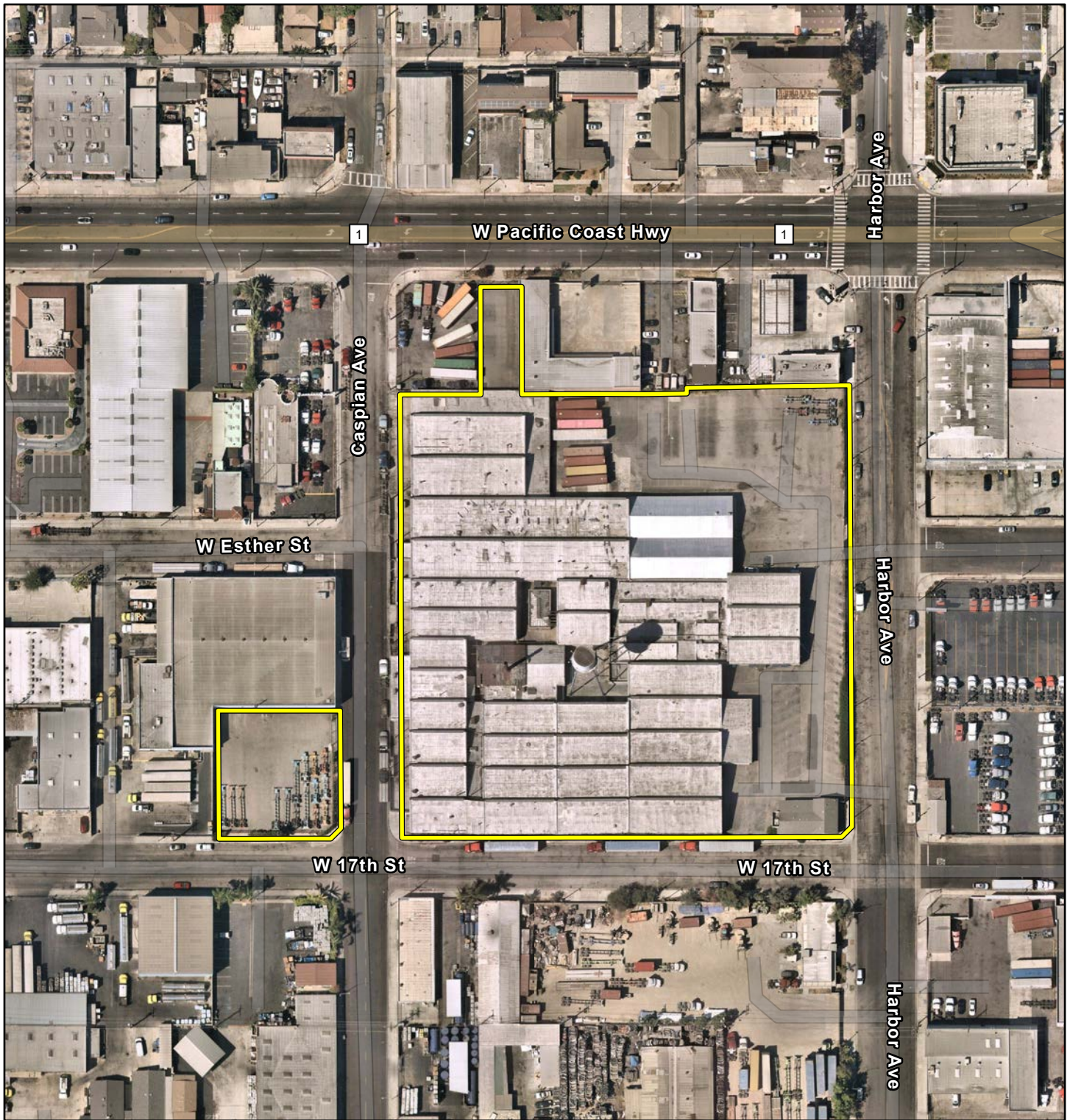
Michael Baker
INTERNATIONAL



0 0.13 0.25 0.5
Miles

Source: Esri, ArcGIS Online, USGS 7.5-Minute topographic quadrangle maps: Long Beach, California

Figure 2



 Project Area

GREEN TRUCKING FACILITY AND CONTAINER PROJECT
LONG BEACH, CA

Project Area

Michael Baker
INTERNATIONAL



0 50 100 200
Feet

Source: Esri, ArcGIS Online, 2021 Nearmap Imagery: Long Beach, California

Figure 3

September 16, 2022

***Via U.S. Mail and Certified Mail. Return Receipt
Requested: No. 7021 1970 0001 8673 4668 &
9590 9402 7419 2055 5564 96***

Gabrielino Tongva Indians of California Tribal Council

Christina Conley, Tribal Consultant and Administrator

P.O. Box 941078

Simi Valley, CA, 93094

Subject: Invitation to Begin Assembly Bill (AB) 52 Consultation for the Green Trucking Facility and Container Project, City of Long Beach, California.

Dear Ms. Conley,

The City of Long Beach (City) is requesting the initiation of AB 52 consultation on the Green Trucking Facility and Container Storage Project (project) located at 1711 Harbor Avenue and 1515 West 17th Street. Please consider this letter and preliminary project information as the initiation of the AB 52 consultation under the California Environmental Quality Act (CEQA).

Project Description

The project would occur on two properties; one located at 1711 Harbor Avenue and the other at 1515 West 17th Street. These two properties make up the project site. The project site is currently developed with buildings, storage areas, surface parking, and ancillary infrastructure, including a water tower, for commercial and industrial uses associated with the former operations of the Custom Fiberglass Manufacturing Company DBA Snug Top (Snug Top).

The project proposes the demolition of the existing buildings and associated equipment on-site to construct a storage yard facility for the temporary stowage of shipping containers en route to and from the Port of Long Beach (POLB). The project will include approximately 210 container stalls, double-stacked, to accommodate 420 shipping containers at 1711 Harbor Avenue and approximately 10 stalls, double-stacked, to accommodate 20 shipping containers at 1515 West 17th Street, for a total of 220 stalls. All shipping container stalls would be topped with a minimum six-inch load-bearing base per code requirements to accommodate stacked shipping containers, at a maximum of two containers high.

The project proposes to retain and modify an existing building located in the southeast corner of the site addressed 1711 Harbor Avenue for office use. The existing structure would receive a 761-foot addition as well as an interior remodel to support project operations. Additional site improvements would include on-site parking for trucks, vehicles, and bicycles, zero-emission charge stations for on-site trucks, plugins for refrigerated container charging, new drought-resistant landscape buffers, and fencing and railing. Project implementation would include



Assembly Bill (AB) 52 Consultation
1711 Harbor Avenue & 1515 W. 17th Street
9/16/2022

two Conditional Use Permits (one for each property) and a Lot Merger for consolidation of the three parcels that comprise 1515 West 17th Street.

Implementation of the proposed project would provide additional support for the global and regional supply chain, propel the Port of Long Beach (POLB) and the City toward more environmentally sustainable design and practices, and provide additional employment opportunities in the City.

The City is preparing an Initial Study/Mitigated Negative Declaration under CEQA for the proposed project. Please see the attached figures depicting the project site.

You are a traditionally and culturally affiliated California Native American tribal representative that has requested notice of projects where AB 52 applies within the City. We are requesting any information that you may have regarding tribal cultural resources (as defined by Public Resources Code 21074) within the project area so that this information can be incorporated into the planning phase of the project. Please respond within 30 days of the date of this letter.

Your comments and concerns are important to the City and we look forward to hearing from you. I remain available to discuss any questions, comments or concerns you might have regarding the project. Due to COVID-19, in person meetings are limited. However, I am available to schedule a teleconference to discuss if needed. Please feel free to contact me with any questions via email at sergio.gutierrez@longbeach.gov, at (562) 570-5934 or you may contact the City by letter directed to:

Sergio Gutierrez, Planner III
City of Long Beach
Development Services Department, Planning Bureau
411 W. Ocean Boulevard, 3rd Floor
Long Beach, CA 90802

Sincerely,

Sergio Gutierrez

Sergio Gutierrez
Planner III
(562) 570-5934
Sergio.Gutierrez@longbeach.gov

Figure 1: Regional Vicinity

Figure 2: Project Vicinity

Figure 3: Project Area



Project Location

GREEN TRUCKING FACILITY AND CONTAINER PROJECT
LONG BEACH, CA

Regional Vicinity

Michael Baker
INTERNATIONAL

N

0

2.5

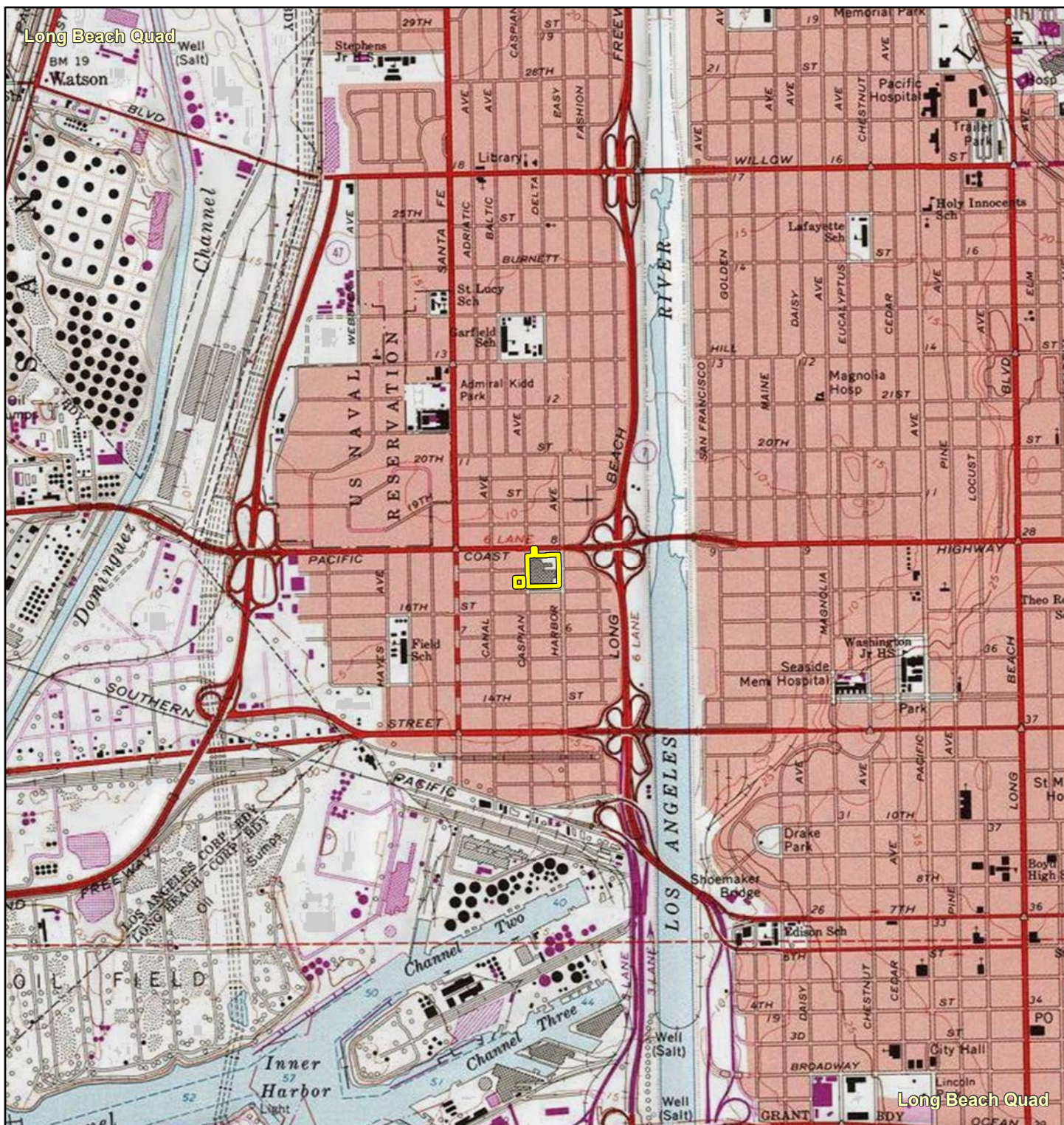
5

10

Miles

Source: Esri, ArcGIS Online, National Geographic World Map: Long Beach, California

Figure 1



GREEN TRUCKING FACILITY AND CONTAINER PROJECT
LONG BEACH, CA

Project Vicinity

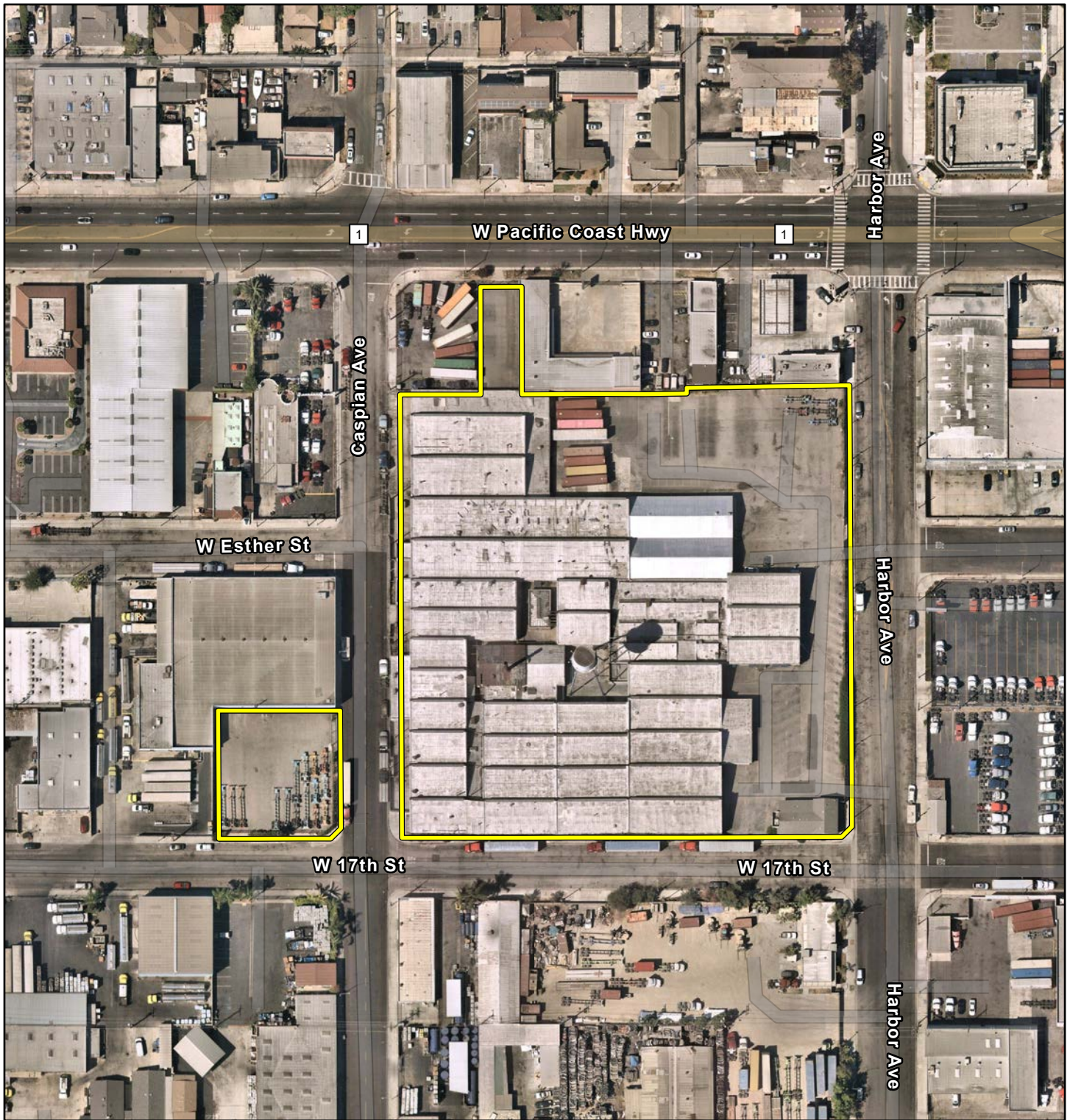
Michael Baker
INTERNATIONAL



0 0.13 0.25 0.5
Miles

Source: Esri, ArcGIS Online, USGS 7.5-Minute topographic quadrangle maps: Long Beach, California

Figure 2



 Project Area

GREEN TRUCKING FACILITY AND CONTAINER PROJECT
LONG BEACH, CA

Project Area

Michael Baker
INTERNATIONAL



0 50 100 200
Feet

Source: Esri, ArcGIS Online, 2021 Nearmap Imagery: Long Beach, California

Figure 3

September 16, 2022

***Via U.S. Mail and Certified Mail. Return Receipt
Requested: No. 7021 1970 0001 8673 4637 &
9590 9402 7419 2055 5564 65***

Gabrieleno/Tongva San Gabriel Band of Mission Indians

Anthony Morales, Chairperson
P.O. Box 693
San Gabriel, CA, 91778

Subject: Invitation to Begin Assembly Bill (AB) 52 Consultation for the Green Trucking Facility and Container Project, City of Long Beach, California.

Dear Mr. Morales,

The City of Long Beach (City) is requesting the initiation of AB 52 consultation on the Green Trucking Facility and Container Storage Project (project) located at 1711 Harbor Avenue and 1515 West 17th Street. Please consider this letter and preliminary project information as the initiation of the AB 52 consultation under the California Environmental Quality Act (CEQA).

Project Description

The project would occur on two properties; one located at 1711 Harbor Avenue and the other at 1515 West 17th Street. These two properties make up the project site. The project site is currently developed with buildings, storage areas, surface parking, and ancillary infrastructure, including a water tower, for commercial and industrial uses associated with the former operations of the Custom Fiberglass Manufacturing Company DBA Snug Top (Snug Top).

The project proposes the demolition of the existing buildings and associated equipment on-site to construct a storage yard facility for the temporary stowage of shipping containers en route to and from the Port of Long Beach (POLB). The project will include approximately 210 container stalls, double-stacked, to accommodate 420 shipping containers at 1711 Harbor Avenue and approximately 10 stalls, double-stacked, to accommodate 20 shipping containers at 1515 West 17th Street, for a total of 220 stalls. All shipping container stalls would be topped with a minimum six-inch load-bearing base per code requirements to accommodate stacked shipping containers, at a maximum of two containers high.

The project proposes to retain and modify an existing building located in the southeast corner of the site addressed 1711 Harbor Avenue for office use. The existing structure would receive a 761-foot addition as well as an interior remodel to support project operations. Additional site improvements would include on-site parking for trucks, vehicles, and bicycles, zero-emission charge stations for on-site trucks, plugins for refrigerated container charging, new drought-resistant landscape buffers, and fencing and railing. Project implementation would include



Assembly Bill (AB) 52 Consultation
1711 Harbor Avenue & 1515 W. 17th Street
9/16/2022

two Conditional Use Permits (one for each property) and a Lot Merger for consolidation of the three parcels that comprise 1515 West 17th Street.

Implementation of the proposed project would provide additional support for the global and regional supply chain, propel the Port of Long Beach (POLB) and the City toward more environmentally sustainable design and practices, and provide additional employment opportunities in the City.

The City is preparing an Initial Study/Mitigated Negative Declaration under CEQA for the proposed project. Please see the attached figures depicting the project site.

You are a traditionally and culturally affiliated California Native American tribal representative that has requested notice of projects where AB 52 applies within the City. We are requesting any information that you may have regarding tribal cultural resources (as defined by Public Resources Code 21074) within the project area so that this information can be incorporated into the planning phase of the project. Please respond within 30 days of the date of this letter.

Your comments and concerns are important to the City and we look forward to hearing from you. I remain available to discuss any questions, comments or concerns you might have regarding the project. Due to COVID-19, in person meetings are limited. However, I am available to schedule a teleconference to discuss if needed. Please feel free to contact me with any questions via email at sergio.gutierrez@longbeach.gov, at (562) 570-5934 or you may contact the City by letter directed to:

Sergio Gutierrez, Planner III
City of Long Beach
Development Services Department, Planning Bureau
411 W. Ocean Boulevard, 3rd Floor
Long Beach, CA 90802

Sincerely,

Sergio Gutierrez

Sergio Gutierrez
Planner III
(562) 570-5934
Sergio.Gutierrez@longbeach.gov

Figure 1: Regional Vicinity

Figure 2: Project Vicinity

Figure 3: Project Area



 Project Location

GREEN TRUCKING FACILITY AND CONTAINER PROJECT
LONG BEACH, CA

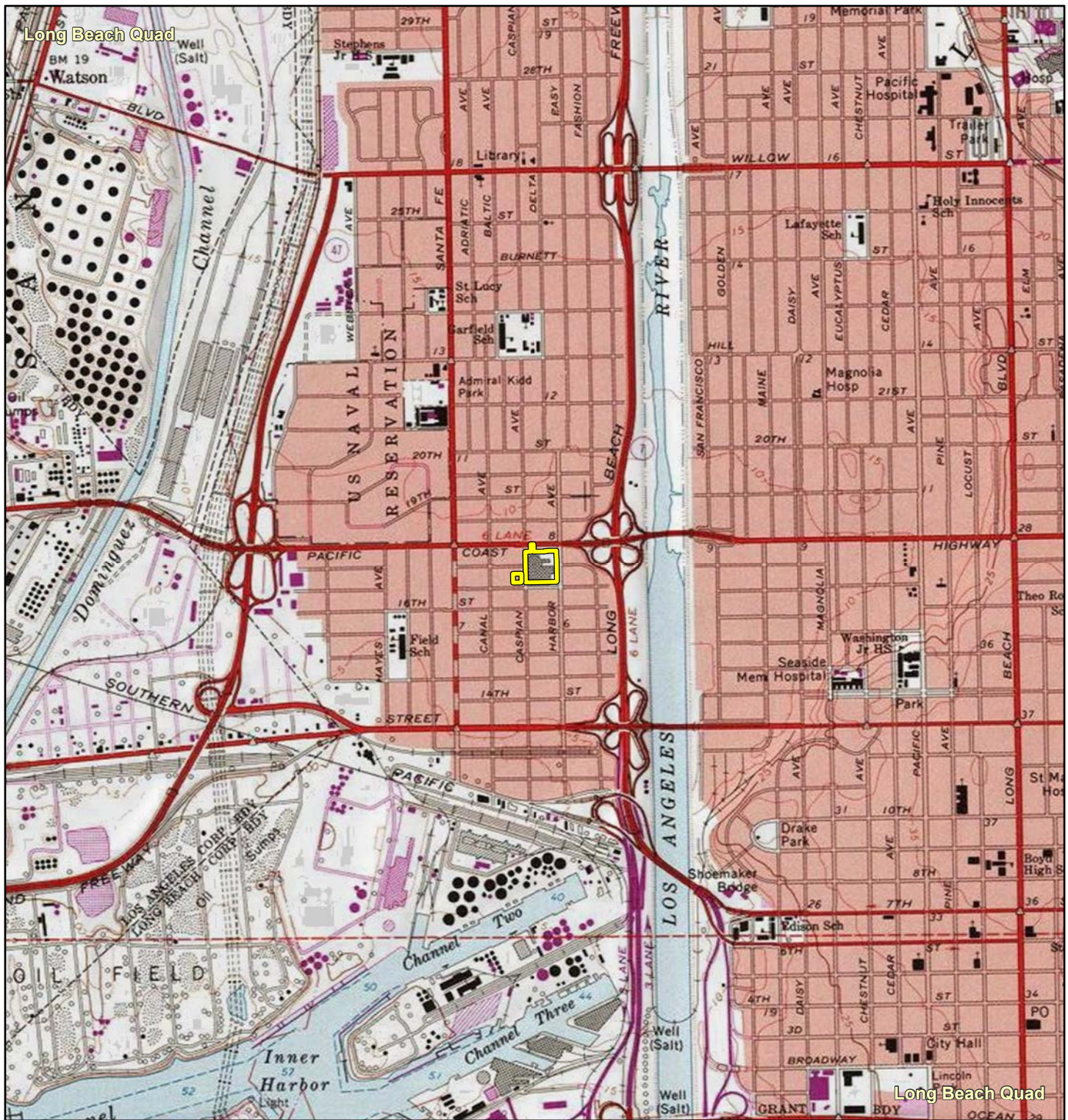
Regional Vicinity

Michael Baker
INTERNATIONAL



Source: Esri, ArcGIS Online, National Geographic World Map: Long Beach, California

Figure 1



GREEN TRUCKING FACILITY AND CONTAINER PROJECT
LONG BEACH, CA

Project Vicinity

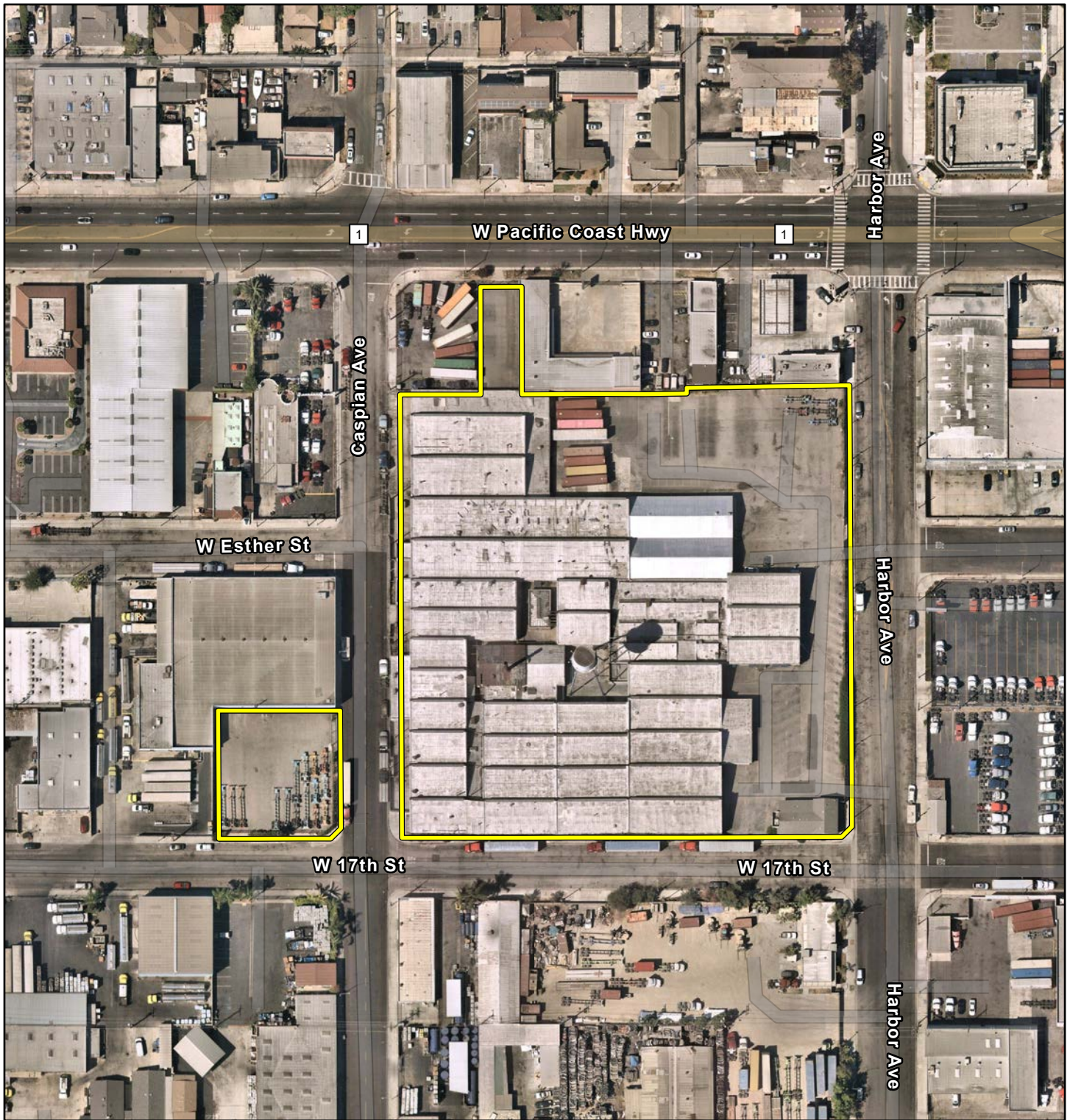
Michael Baker
INTERNATIONAL



0 0.13 0.25 0.5
Miles

Source: Esri, ArcGIS Online, USGS 7.5-Minute topographic quadrangle maps: Long Beach, California

Figure 2



 Project Area

GREEN TRUCKING FACILITY AND CONTAINER PROJECT
LONG BEACH, CA

Project Area

Michael Baker
INTERNATIONAL



0 50 100 200
Feet

Source: Esri, ArcGIS Online, 2021 Nearmap Imagery: Long Beach, California

Figure 3

September 16, 2022

***Via U.S. Mail and Certified Mail. Return Receipt
Requested: No. 7021 1970 0001 8673 4712 &
9590 9402 7419 2055 5565 40***

Juaneno Band of Mission Indians Acjachemen Nation 84A

Heidi Lucero, Chairperson
31411-A La Matanza Street
San Juan Capistrano, CA, 92675

Subject: Invitation to Begin Assembly Bill (AB) 52 Consultation for the Green Trucking Facility and Container Project, City of Long Beach, California.

Dear Ms. Lucero,

The City of Long Beach (City) is requesting the initiation of AB 52 consultation on the Green Trucking Facility and Container Storage Project (project) located at 1711 Harbor Avenue and 1515 West 17th Street. Please consider this letter and preliminary project information as the initiation of the AB 52 consultation under the California Environmental Quality Act (CEQA).

Project Description

The project would occur on two properties; one located at 1711 Harbor Avenue and the other at 1515 West 17th Street. These two properties make up the project site. The project site is currently developed with buildings, storage areas, surface parking, and ancillary infrastructure, including a water tower, for commercial and industrial uses associated with the former operations of the Custom Fiberglass Manufacturing Company DBA Snug Top (Snug Top).

The project proposes the demolition of the existing buildings and associated equipment on-site to construct a storage yard facility for the temporary stowage of shipping containers en route to and from the Port of Long Beach (POLB). The project will include approximately 210 container stalls, double-stacked, to accommodate 420 shipping containers at 1711 Harbor Avenue and approximately 10 stalls, double-stacked, to accommodate 20 shipping containers at 1515 West 17th Street, for a total of 220 stalls. All shipping container stalls would be topped with a minimum six-inch load-bearing base per code requirements to accommodate stacked shipping containers, at a maximum of two containers high.

The project proposes to retain and modify an existing building located in the southeast corner of the site addressed 1711 Harbor Avenue for office use. The existing structure would receive a 761-foot addition as well as an interior remodel to support project operations. Additional site improvements would include on-site parking for trucks, vehicles, and bicycles, zero-emission charge stations for on-site trucks, plugins for refrigerated container charging, new drought-resistant landscape buffers, and fencing and railing. Project implementation would include



Assembly Bill (AB) 52 Consultation
1711 Harbor Avenue & 1515 W. 17th Street
9/16/2022

two Conditional Use Permits (one for each property) and a Lot Merger for consolidation of the three parcels that comprise 1515 West 17th Street.

Implementation of the proposed project would provide additional support for the global and regional supply chain, propel the Port of Long Beach (POLB) and the City toward more environmentally sustainable design and practices, and provide additional employment opportunities in the City.

The City is preparing an Initial Study/Mitigated Negative Declaration under CEQA for the proposed project. Please see the attached figures depicting the project site.

You are a traditionally and culturally affiliated California Native American tribal representative that has requested notice of projects where AB 52 applies within the City. We are requesting any information that you may have regarding tribal cultural resources (as defined by Public Resources Code 21074) within the project area so that this information can be incorporated into the planning phase of the project. Please respond within 30 days of the date of this letter.

Your comments and concerns are important to the City and we look forward to hearing from you. I remain available to discuss any questions, comments or concerns you might have regarding the project. Due to COVID-19, in person meetings are limited. However, I am available to schedule a teleconference to discuss if needed. Please feel free to contact me with any questions via email at sergio.gutierrez@longbeach.gov, at (562) 570-5934 or you may contact the City by letter directed to:

Sergio Gutierrez, Planner III
City of Long Beach
Development Services Department, Planning Bureau
411 W. Ocean Boulevard, 3rd Floor
Long Beach, CA 90802

Sincerely,

Sergio Gutierrez

Sergio Gutierrez
Planner III
(562) 570-5934
Sergio.Gutierrez@longbeach.gov

Figure 1: Regional Vicinity

Figure 2: Project Vicinity

Figure 3: Project Area



 Project Location

GREEN TRUCKING FACILITY AND CONTAINER PROJECT
LONG BEACH, CA

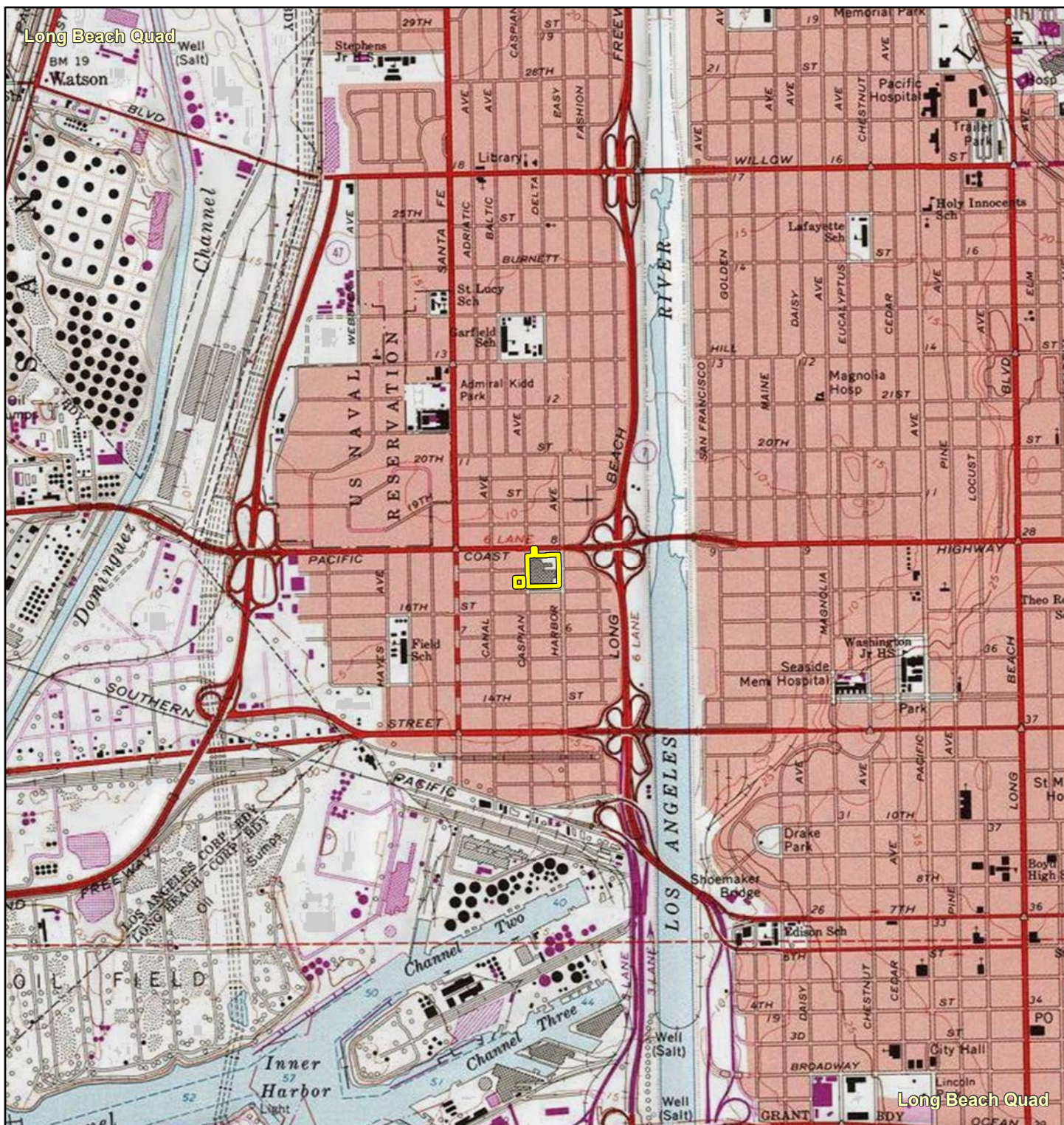
Regional Vicinity

Michael Baker
INTERNATIONAL



Source: Esri, ArcGIS Online, National Geographic World Map: Long Beach, California

Figure 1



GREEN TRUCKING FACILITY AND CONTAINER PROJECT
LONG BEACH, CA

Project Vicinity

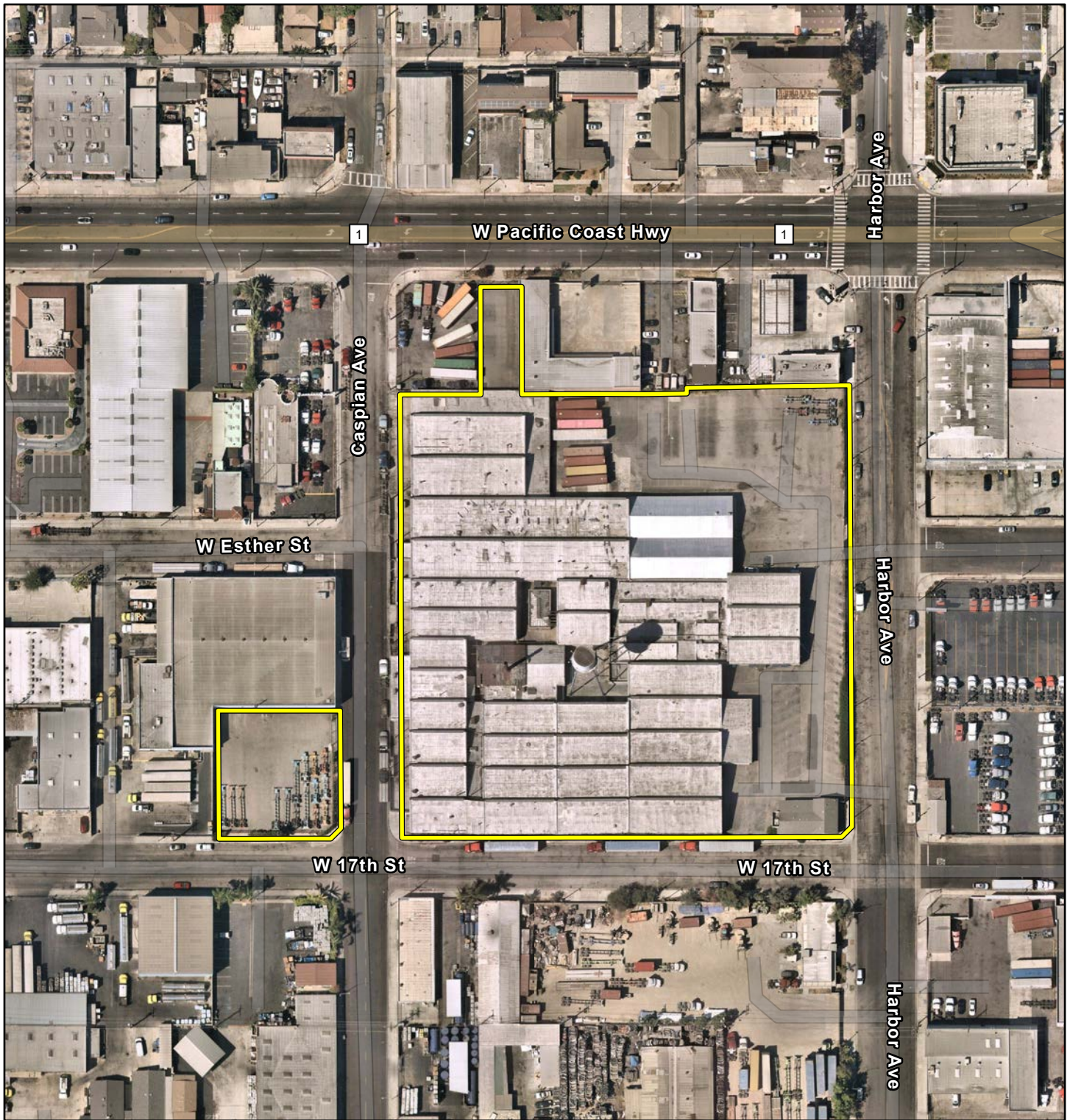
Michael Baker
INTERNATIONAL



0 0.13 0.25 0.5
Miles

Source: Esri, ArcGIS Online, USGS 7.5-Minute topographic quadrangle maps: Long Beach, California

Figure 2



 Project Area

GREEN TRUCKING FACILITY AND CONTAINER PROJECT
LONG BEACH, CA

Project Area

Michael Baker
INTERNATIONAL



0 50 100 200
Feet

Source: Esri, ArcGIS Online, 2021 Nearmap Imagery: Long Beach, California

Figure 3

September 16, 2022

***Via U.S. Mail and Certified Mail. Return Receipt
Requested: No. 7019 2970 0001 3676 8547 &
9590 9402 7419 2055 5565 57***

Juaneno Band of Mission Indians Acjachemen Nation - Belardes

Matias Belardes, Chairperson
32161 Avenida Los Amigos
San Juan Capistrano, CA, 92675

Subject: Invitation to Begin Assembly Bill (AB) 52 Consultation for the Green Trucking Facility and Container Project, City of Long Beach, California.

Dear Ms. Belardes,

The City of Long Beach (City) is requesting the initiation of AB 52 consultation on the Green Trucking Facility and Container Storage Project (project) located at 1711 Harbor Avenue and 1515 West 17th Street. Please consider this letter and preliminary project information as the initiation of the AB 52 consultation under the California Environmental Quality Act (CEQA).

Project Description

The project would occur on two properties; one located at 1711 Harbor Avenue and the other at 1515 West 17th Street. These two properties make up the project site. The project site is currently developed with buildings, storage areas, surface parking, and ancillary infrastructure, including a water tower, for commercial and industrial uses associated with the former operations of the Custom Fiberglass Manufacturing Company DBA Snug Top (Snug Top).

The project proposes the demolition of the existing buildings and associated equipment on-site to construct a storage yard facility for the temporary stowage of shipping containers en route to and from the Port of Long Beach (POLB). The project will include approximately 210 container stalls, double-stacked, to accommodate 420 shipping containers at 1711 Harbor Avenue and approximately 10 stalls, double-stacked, to accommodate 20 shipping containers at 1515 West 17th Street, for a total of 220 stalls. All shipping container stalls would be topped with a minimum six-inch load-bearing base per code requirements to accommodate stacked shipping containers, at a maximum of two containers high.

The project proposes to retain and modify an existing building located in the southeast corner of the site addressed 1711 Harbor Avenue for office use. The existing structure would receive a 761-foot addition as well as an interior remodel to support project operations. Additional site improvements would include on-site parking for trucks, vehicles, and bicycles, zero-emission charge stations for on-site trucks, plugins for refrigerated container charging, new drought-resistant landscape buffers, and fencing and railing. Project implementation would include



Assembly Bill (AB) 52 Consultation
1711 Harbor Avenue & 1515 W. 17th Street
9/16/2022

two Conditional Use Permits (one for each property) and a Lot Merger for consolidation of the three parcels that comprise 1515 West 17th Street.

Implementation of the proposed project would provide additional support for the global and regional supply chain, propel the Port of Long Beach (POLB) and the City toward more environmentally sustainable design and practices, and provide additional employment opportunities in the City.

The City is preparing an Initial Study/Mitigated Negative Declaration under CEQA for the proposed project. Please see the attached figures depicting the project site.

You are a traditionally and culturally affiliated California Native American tribal representative that has requested notice of projects where AB 52 applies within the City. We are requesting any information that you may have regarding tribal cultural resources (as defined by Public Resources Code 21074) within the project area so that this information can be incorporated into the planning phase of the project. Please respond within 30 days of the date of this letter.

Your comments and concerns are important to the City and we look forward to hearing from you. I remain available to discuss any questions, comments or concerns you might have regarding the project. Due to COVID-19, in person meetings are limited. However, I am available to schedule a teleconference to discuss if needed. Please feel free to contact me with any questions via email at sergio.gutierrez@longbeach.gov, at (562) 570-5934 or you may contact the City by letter directed to:

Sergio Gutierrez, Planner III
City of Long Beach
Development Services Department, Planning Bureau
411 W. Ocean Boulevard, 3rd Floor
Long Beach, CA 90802

Sincerely,

Sergio Gutierrez

Sergio Gutierrez
Planner III
(562) 570-5934
Sergio.Gutierrez@longbeach.gov

Figure 1: Regional Vicinity

Figure 2: Project Vicinity

Figure 3: Project Area



Project Location

GREEN TRUCKING FACILITY AND CONTAINER PROJECT
LONG BEACH, CA

Regional Vicinity

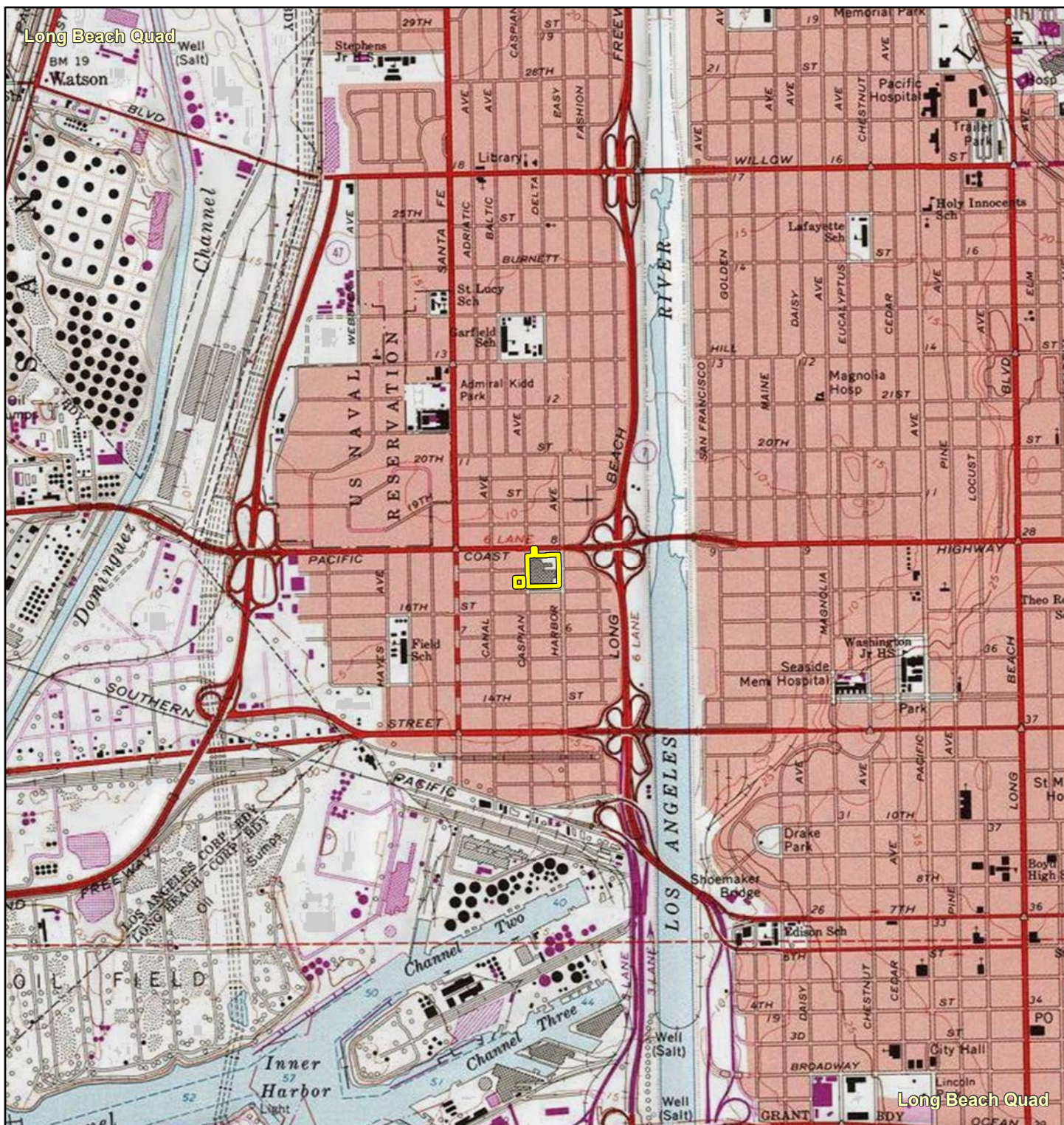
Michael Baker
INTERNATIONAL



0 2.5 5 10
Miles

Source: Esri, ArcGIS Online, National Geographic World Map: Long Beach, California

Figure 1



GREEN TRUCKING FACILITY AND CONTAINER PROJECT
LONG BEACH, CA

Project Vicinity

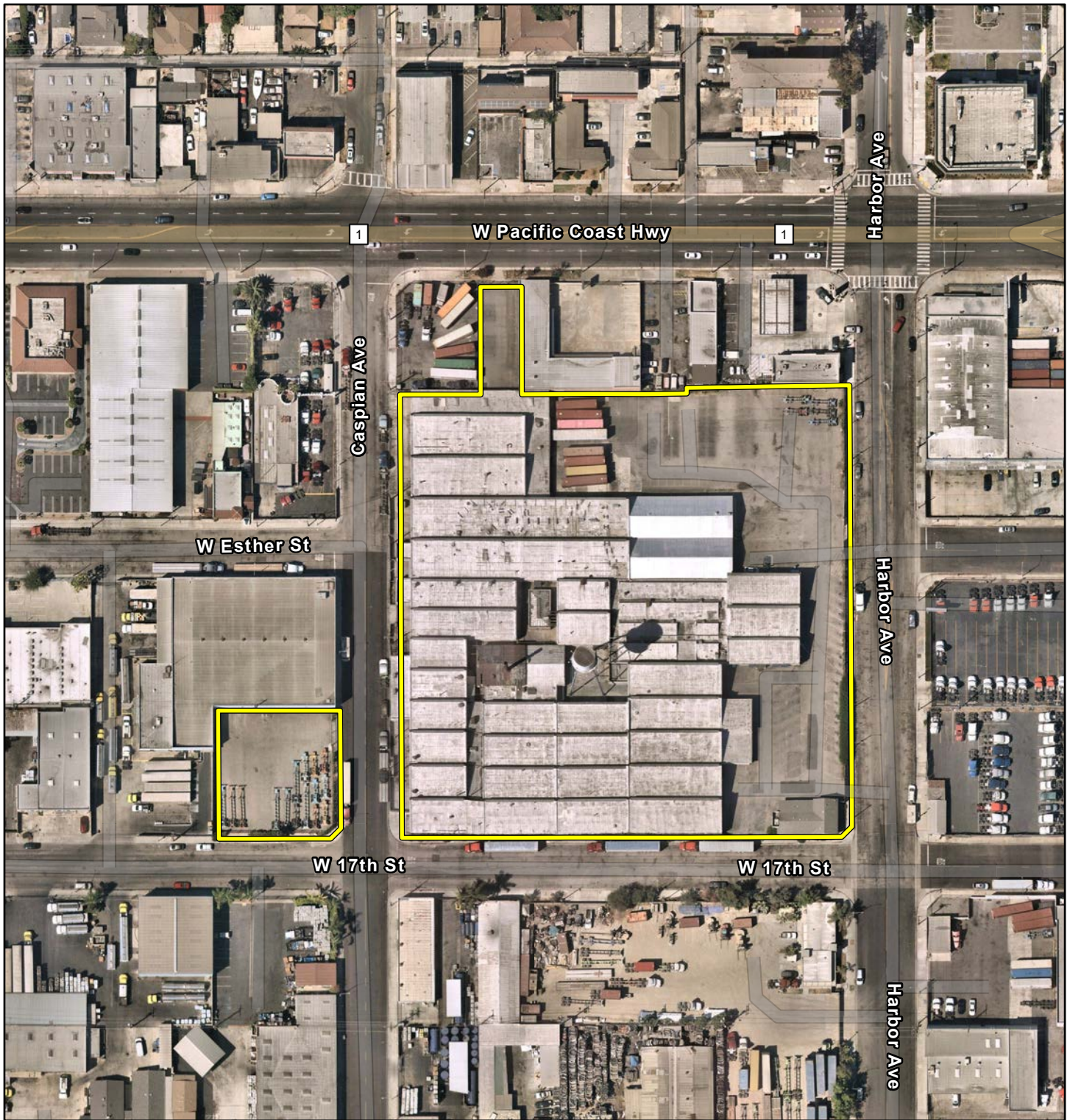
Michael Baker
INTERNATIONAL



0 0.13 0.25 0.5
Miles

Source: Esri, ArcGIS Online, USGS 7.5-Minute topographic quadrangle maps: Long Beach, California

Figure 2



 Project Area

GREEN TRUCKING FACILITY AND CONTAINER PROJECT
LONG BEACH, CA

Project Area

Michael Baker
INTERNATIONAL



0 50 100 200
Feet

Source: Esri, ArcGIS Online, 2021 Nearmap Imagery: Long Beach, California

Figure 3

September 16, 2022

***Via U.S. Mail and Certified Mail. Return Receipt
Requested: No. 7021 1970 0001 8673 4705 &
9590 9402 7419 2055 5565 33***

Santa Rosa Band of Cahuilla Indians

Lovina Redner, Tribal Chair
P.O. Box 391820
Anza, CA, 92539

Subject: Invitation to Begin Assembly Bill (AB) 52 Consultation for the Green Trucking Facility and Container Project, City of Long Beach, California.

Dear Ms. Lovina,

The City of Long Beach (City) is requesting the initiation of AB 52 consultation on the Green Trucking Facility and Container Storage Project (project) located at 1711 Harbor Avenue and 1515 West 17th Street. Please consider this letter and preliminary project information as the initiation of the AB 52 consultation under the California Environmental Quality Act (CEQA).

Project Description

The project would occur on two properties; one located at 1711 Harbor Avenue and the other at 1515 West 17th Street. These two properties make up the project site. The project site is currently developed with buildings, storage areas, surface parking, and ancillary infrastructure, including a water tower, for commercial and industrial uses associated with the former operations of the Custom Fiberglass Manufacturing Company DBA Snug Top (Snug Top).

The project proposes the demolition of the existing buildings and associated equipment on-site to construct a storage yard facility for the temporary stowage of shipping containers en route to and from the Port of Long Beach (POLB). The project will include approximately 210 container stalls, double-stacked, to accommodate 420 shipping containers at 1711 Harbor Avenue and approximately 10 stalls, double-stacked, to accommodate 20 shipping containers at 1515 West 17th Street, for a total of 220 stalls. All shipping container stalls would be topped with a minimum six-inch load-bearing base per code requirements to accommodate stacked shipping containers, at a maximum of two containers high.

The project proposes to retain and modify an existing building located in the southeast corner of the site addressed 1711 Harbor Avenue for office use. The existing structure would receive a 761-foot addition as well as an interior remodel to support project operations. Additional site improvements would include on-site parking for trucks, vehicles, and bicycles, zero-emission charge stations for on-site trucks, plugins for refrigerated container charging, new drought-resistant landscape buffers, and fencing and railing. Project implementation would include



Assembly Bill (AB) 52 Consultation
1711 Harbor Avenue & 1515 W. 17th Street
9/16/2022

two Conditional Use Permits (one for each property) and a Lot Merger for consolidation of the three parcels that comprise 1515 West 17th Street.

Implementation of the proposed project would provide additional support for the global and regional supply chain, propel the Port of Long Beach (POLB) and the City toward more environmentally sustainable design and practices, and provide additional employment opportunities in the City.

The City is preparing an Initial Study/Mitigated Negative Declaration under CEQA for the proposed project. Please see the attached figures depicting the project site.

You are a traditionally and culturally affiliated California Native American tribal representative that has requested notice of projects where AB 52 applies within the City. We are requesting any information that you may have regarding tribal cultural resources (as defined by Public Resources Code 21074) within the project area so that this information can be incorporated into the planning phase of the project. Please respond within 30 days of the date of this letter.

Your comments and concerns are important to the City and we look forward to hearing from you. I remain available to discuss any questions, comments or concerns you might have regarding the project. Due to COVID-19, in person meetings are limited. However, I am available to schedule a teleconference to discuss if needed. Please feel free to contact me with any questions via email at sergio.gutierrez@longbeach.gov, at (562) 570-5934 or you may contact the City by letter directed to:

Sergio Gutierrez, Planner III
City of Long Beach
Development Services Department, Planning Bureau
411 W. Ocean Boulevard, 3rd Floor
Long Beach, CA 90802

Sincerely,

Sergio Gutierrez

Sergio Gutierrez
Planner III
(562) 570-5934
Sergio.Gutierrez@longbeach.gov

Figure 1: Regional Vicinity

Figure 2: Project Vicinity

Figure 3: Project Area

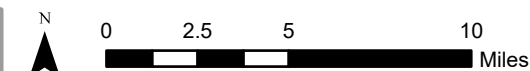


★ Project Location

GREEN TRUCKING FACILITY AND CONTAINER PROJECT
LONG BEACH, CA

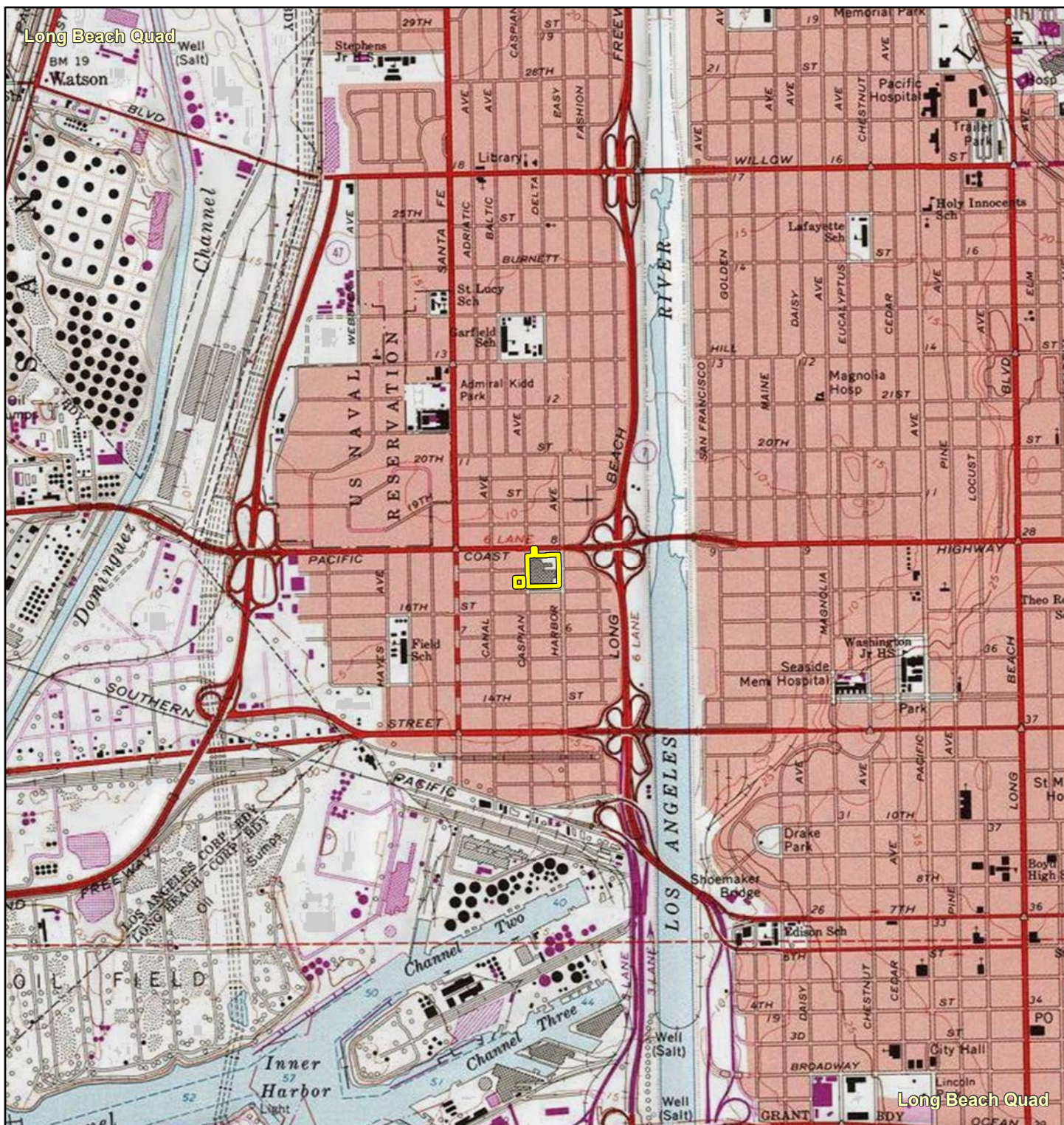
Regional Vicinity

Michael Baker
INTERNATIONAL



Source: Esri, ArcGIS Online, National Geographic World Map: Long Beach, California

Figure 1



GREEN TRUCKING FACILITY AND CONTAINER PROJECT
LONG BEACH, CA

Project Vicinity

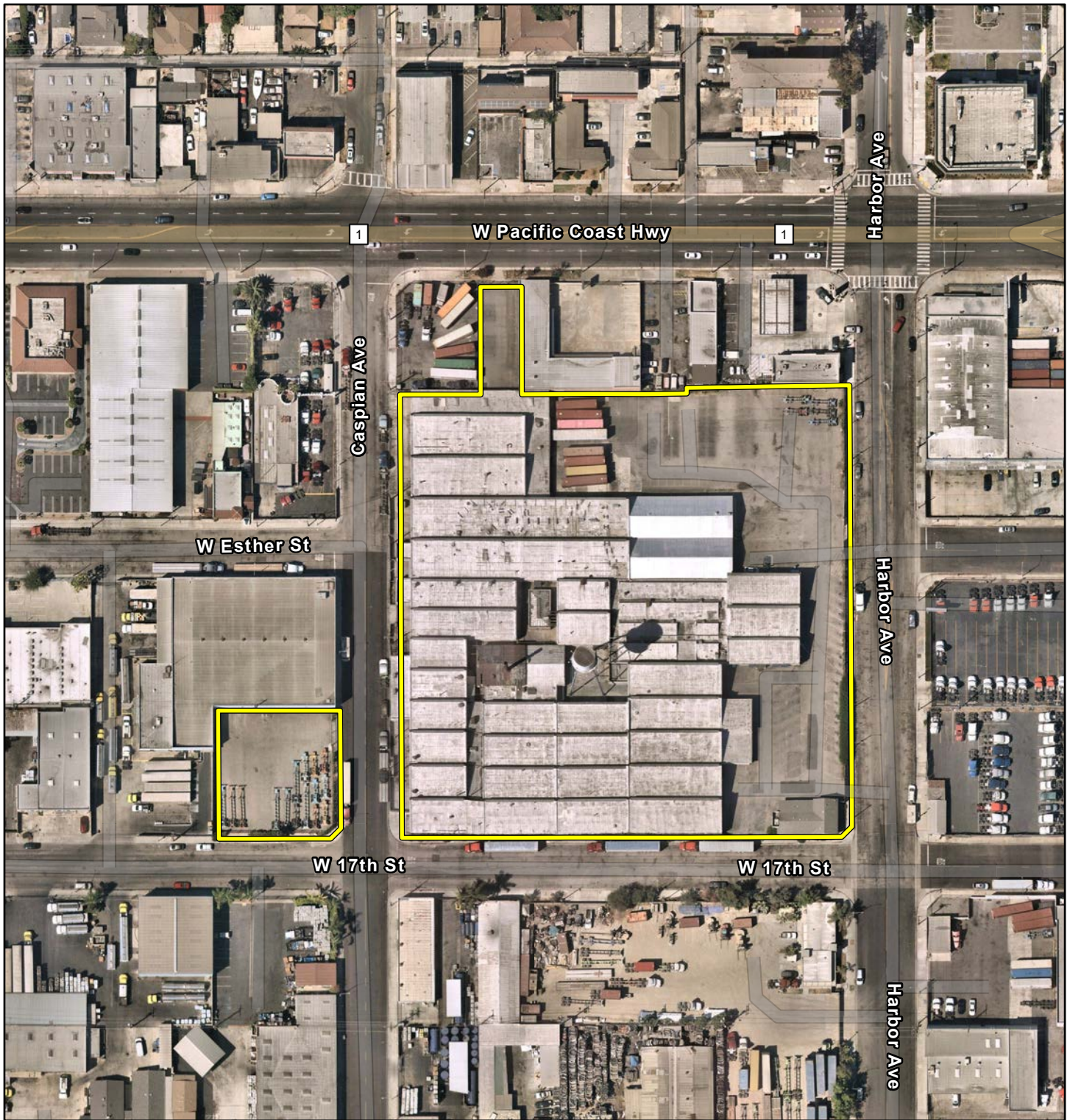
Michael Baker
INTERNATIONAL



0 0.13 0.25 0.5
Miles

Source: Esri, ArcGIS Online, USGS 7.5-Minute topographic quadrangle maps: Long Beach, California

Figure 2



 Project Area

GREEN TRUCKING FACILITY AND CONTAINER PROJECT
LONG BEACH, CA

Project Area

Michael Baker
INTERNATIONAL



0 50 100 200
Feet

Source: Esri, ArcGIS Online, 2021 Nearmap Imagery: Long Beach, California

Figure 3

September 16, 2022

Via U.S. Mail and Certified Mail. Return Receipt

***Requested: No. 7021 1970 0001 8673 4682 &
9590 9402 7419 2055 5565 19***

Soboba Band of Luiseno Indians

Joseph Ontiveros, Cultural Resource Department

P.O. BOX 487

San Jacinto, CA, 92581

Subject: Invitation to Begin Assembly Bill (AB) 52 Consultation for the Green Trucking Facility and Container Project, City of Long Beach, California.

Dear Mr. Ontiveros,

The City of Long Beach (City) is requesting the initiation of AB 52 consultation on the Green Trucking Facility and Container Storage Project (project) located at 1711 Harbor Avenue and 1515 West 17th Street. Please consider this letter and preliminary project information as the initiation of the AB 52 consultation under the California Environmental Quality Act (CEQA).

Project Description

The project would occur on two properties; one located at 1711 Harbor Avenue and the other at 1515 West 17th Street. These two properties make up the project site. The project site is currently developed with buildings, storage areas, surface parking, and ancillary infrastructure, including a water tower, for commercial and industrial uses associated with the former operations of the Custom Fiberglass Manufacturing Company DBA Snug Top (Snug Top).

The project proposes the demolition of the existing buildings and associated equipment on-site to construct a storage yard facility for the temporary stowage of shipping containers en route to and from the Port of Long Beach (POLB). The project will include approximately 210 container stalls, double-stacked, to accommodate 420 shipping containers at 1711 Harbor Avenue and approximately 10 stalls, double-stacked, to accommodate 20 shipping containers at 1515 West 17th Street, for a total of 220 stalls. All shipping container stalls would be topped with a minimum six-inch load-bearing base per code requirements to accommodate stacked shipping containers, at a maximum of two containers high.

The project proposes to retain and modify an existing building located in the southeast corner of the site addressed 1711 Harbor Avenue for office use. The existing structure would receive a 761-foot addition as well as an interior remodel to support project operations. Additional site improvements would include on-site parking for trucks, vehicles, and bicycles, zero-emission charge stations for on-site trucks, plugins for refrigerated container charging, new drought-resistant landscape buffers, and fencing and railing. Project implementation would include



Assembly Bill (AB) 52 Consultation
1711 Harbor Avenue & 1515 W. 17th Street
9/16/2022

two Conditional Use Permits (one for each property) and a Lot Merger for consolidation of the three parcels that comprise 1515 West 17th Street.

Implementation of the proposed project would provide additional support for the global and regional supply chain, propel the Port of Long Beach (POLB) and the City toward more environmentally sustainable design and practices, and provide additional employment opportunities in the City.

The City is preparing an Initial Study/Mitigated Negative Declaration under CEQA for the proposed project. Please see the attached figures depicting the project site.

You are a traditionally and culturally affiliated California Native American tribal representative that has requested notice of projects where AB 52 applies within the City. We are requesting any information that you may have regarding tribal cultural resources (as defined by Public Resources Code 21074) within the project area so that this information can be incorporated into the planning phase of the project. Please respond within 30 days of the date of this letter.

Your comments and concerns are important to the City and we look forward to hearing from you. I remain available to discuss any questions, comments or concerns you might have regarding the project. Due to COVID-19, in person meetings are limited. However, I am available to schedule a teleconference to discuss if needed. Please feel free to contact me with any questions via email at sergio.gutierrez@longbeach.gov, at (562) 570-5934 or you may contact the City by letter directed to:

Sergio Gutierrez, Planner III
City of Long Beach
Development Services Department, Planning Bureau
411 W. Ocean Boulevard, 3rd Floor
Long Beach, CA 90802

Sincerely,

Sergio Gutierrez

Sergio Gutierrez
Planner III
(562) 570-5934
Sergio.Gutierrez@longbeach.gov

Figure 1: Regional Vicinity

Figure 2: Project Vicinity

Figure 3: Project Area



Project Location

GREEN TRUCKING FACILITY AND CONTAINER PROJECT
LONG BEACH, CA

Regional Vicinity

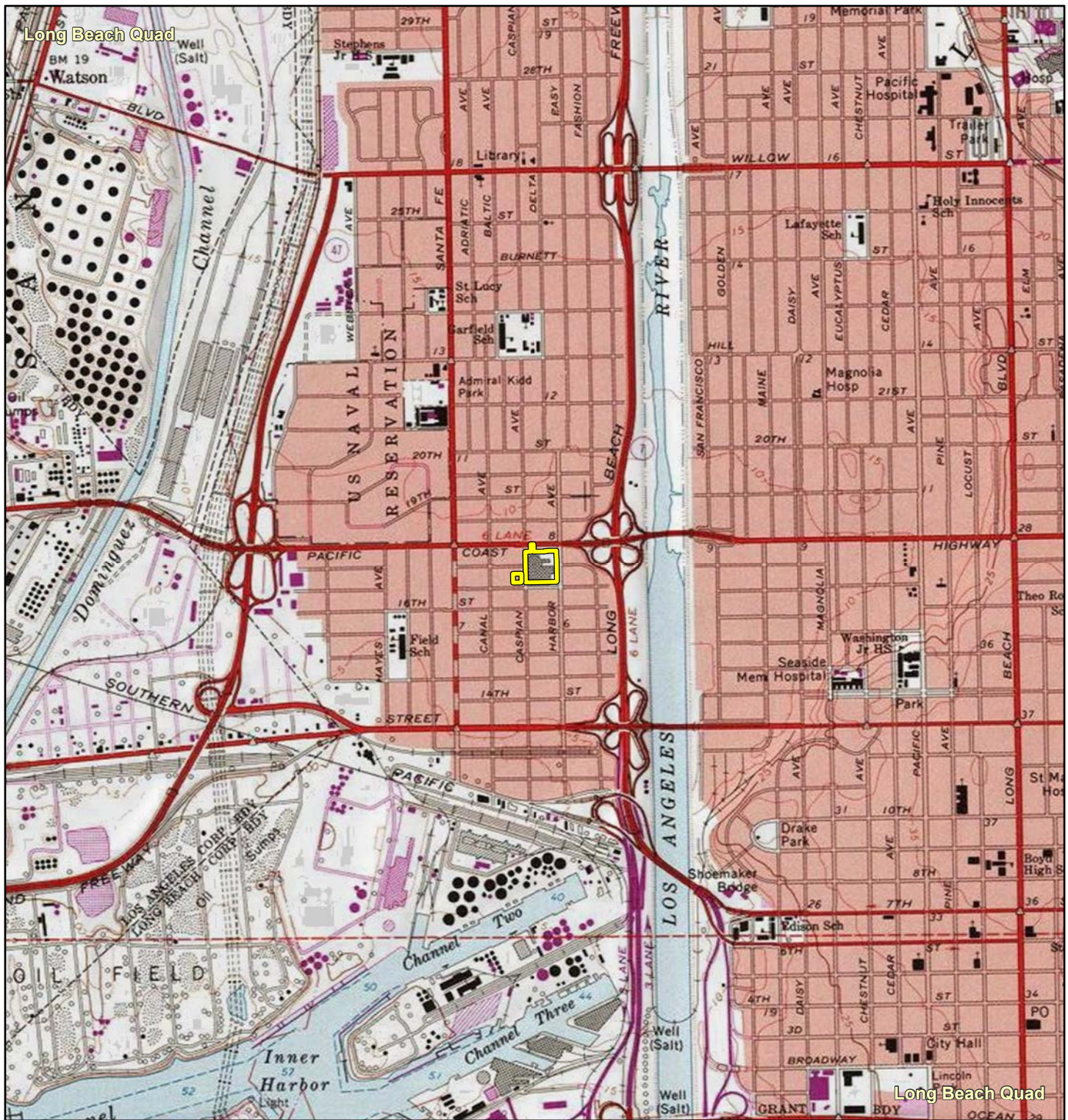
Michael Baker
INTERNATIONAL



0 2.5 5 10
Miles

Source: Esri, ArcGIS Online, National Geographic World Map: Long Beach, California

Figure 1



GREEN TRUCKING FACILITY AND CONTAINER PROJECT
LONG BEACH, CA

Project Vicinity

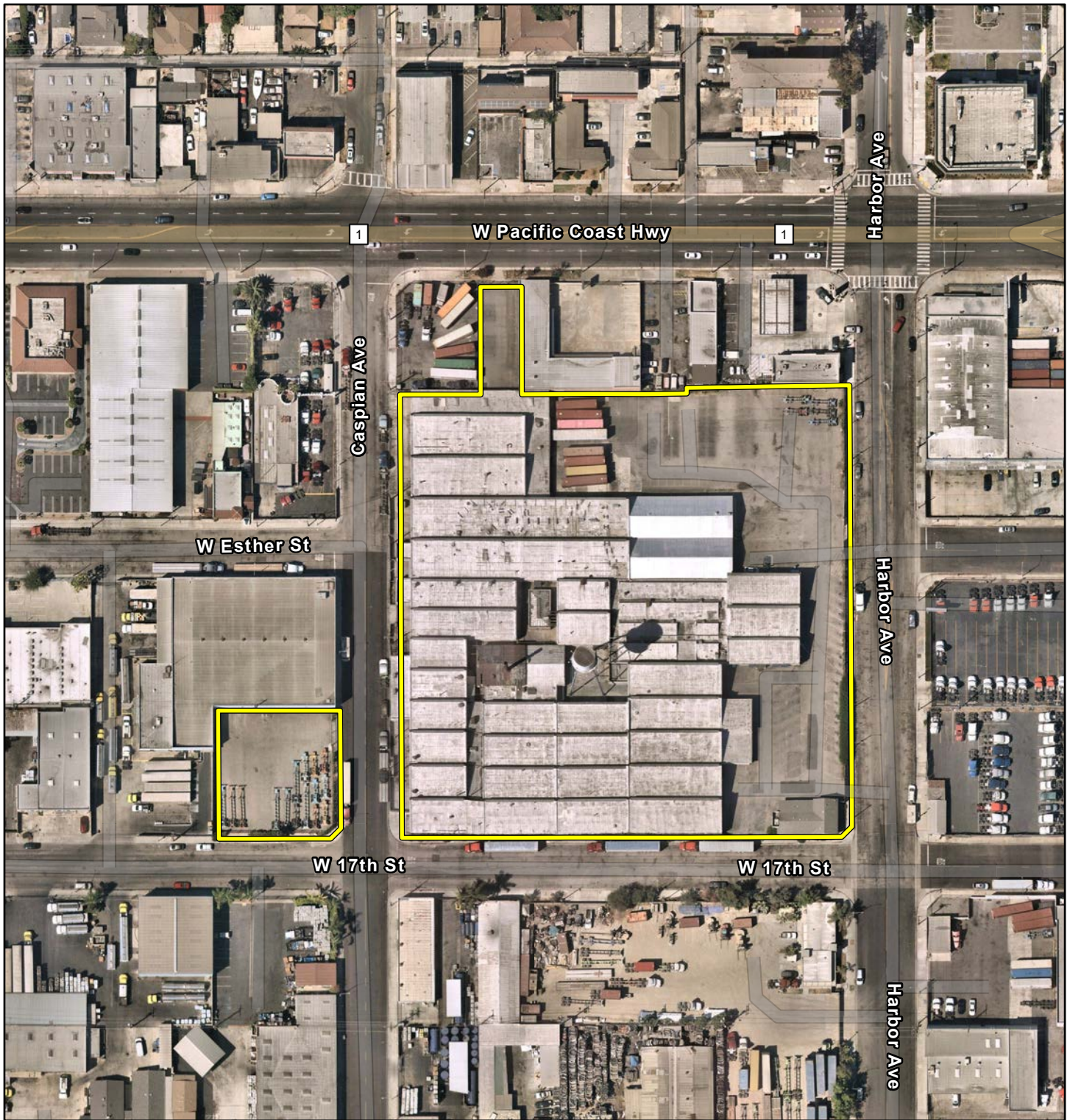
Michael Baker
INTERNATIONAL



0 0.13 0.25 0.5
Miles

Source: Esri, ArcGIS Online, USGS 7.5-Minute topographic quadrangle maps: Long Beach, California

Figure 2



 Project Area

GREEN TRUCKING FACILITY AND CONTAINER PROJECT
LONG BEACH, CA

Project Area

Michael Baker
INTERNATIONAL



0 50 100 200
Feet

Source: Esri, ArcGIS Online, 2021 Nearmap Imagery: Long Beach, California

Figure 3

September 16, 2022

***Via U.S. Mail and Certified Mail. Return Receipt
Requested: No. 7021 1970 0001 8673 4699 &
9590 9402 7419 2055 5565 26***

Soboba Band of Luiseno Indians

Isaiah Vivanco, Chairperson
P. O. Box 487
San Jacinto, CA, 92581

Subject: Invitation to Begin Assembly Bill (AB) 52 Consultation for the Green Trucking Facility and Container Project, City of Long Beach, California.

Dear Mr. Vivanco,

The City of Long Beach (City) is requesting the initiation of AB 52 consultation on the Green Trucking Facility and Container Storage Project (project) located at 1711 Harbor Avenue and 1515 West 17th Street. Please consider this letter and preliminary project information as the initiation of the AB 52 consultation under the California Environmental Quality Act (CEQA).

Project Description

The project would occur on two properties; one located at 1711 Harbor Avenue and the other at 1515 West 17th Street. These two properties make up the project site. The project site is currently developed with buildings, storage areas, surface parking, and ancillary infrastructure, including a water tower, for commercial and industrial uses associated with the former operations of the Custom Fiberglass Manufacturing Company DBA Snug Top (Snug Top).

The project proposes the demolition of the existing buildings and associated equipment on-site to construct a storage yard facility for the temporary stowage of shipping containers en route to and from the Port of Long Beach (POLB). The project will include approximately 210 container stalls, double-stacked, to accommodate 420 shipping containers at 1711 Harbor Avenue and approximately 10 stalls, double-stacked, to accommodate 20 shipping containers at 1515 West 17th Street, for a total of 220 stalls. All shipping container stalls would be topped with a minimum six-inch load-bearing base per code requirements to accommodate stacked shipping containers, at a maximum of two containers high.

The project proposes to retain and modify an existing building located in the southeast corner of the site addressed 1711 Harbor Avenue for office use. The existing structure would receive a 761-foot addition as well as an interior remodel to support project operations. Additional site improvements would include on-site parking for trucks, vehicles, and bicycles, zero-emission charge stations for on-site trucks, plugins for refrigerated container charging, new drought-resistant landscape buffers, and fencing and railing. Project implementation would include



Assembly Bill (AB) 52 Consultation
1711 Harbor Avenue & 1515 W. 17th Street
9/16/2022

two Conditional Use Permits (one for each property) and a Lot Merger for consolidation of the three parcels that comprise 1515 West 17th Street.

Implementation of the proposed project would provide additional support for the global and regional supply chain, propel the Port of Long Beach (POLB) and the City toward more environmentally sustainable design and practices, and provide additional employment opportunities in the City.

The City is preparing an Initial Study/Mitigated Negative Declaration under CEQA for the proposed project. Please see the attached figures depicting the project site.

You are a traditionally and culturally affiliated California Native American tribal representative that has requested notice of projects where AB 52 applies within the City. We are requesting any information that you may have regarding tribal cultural resources (as defined by Public Resources Code 21074) within the project area so that this information can be incorporated into the planning phase of the project. Please respond within 30 days of the date of this letter.

Your comments and concerns are important to the City and we look forward to hearing from you. I remain available to discuss any questions, comments or concerns you might have regarding the project. Due to COVID-19, in person meetings are limited. However, I am available to schedule a teleconference to discuss if needed. Please feel free to contact me with any questions via email at sergio.gutierrez@longbeach.gov, at (562) 570-5934 or you may contact the City by letter directed to:

Sergio Gutierrez, Planner III
City of Long Beach
Development Services Department, Planning Bureau
411 W. Ocean Boulevard, 3rd Floor
Long Beach, CA 90802

Sincerely,

Sergio Gutierrez

Sergio Gutierrez
Planner III
(562) 570-5934
Sergio.Gutierrez@longbeach.gov

Figure 1: Regional Vicinity

Figure 2: Project Vicinity

Figure 3: Project Area



Project Location

GREEN TRUCKING FACILITY AND CONTAINER PROJECT
LONG BEACH, CA

Regional Vicinity

Michael Baker
INTERNATIONAL

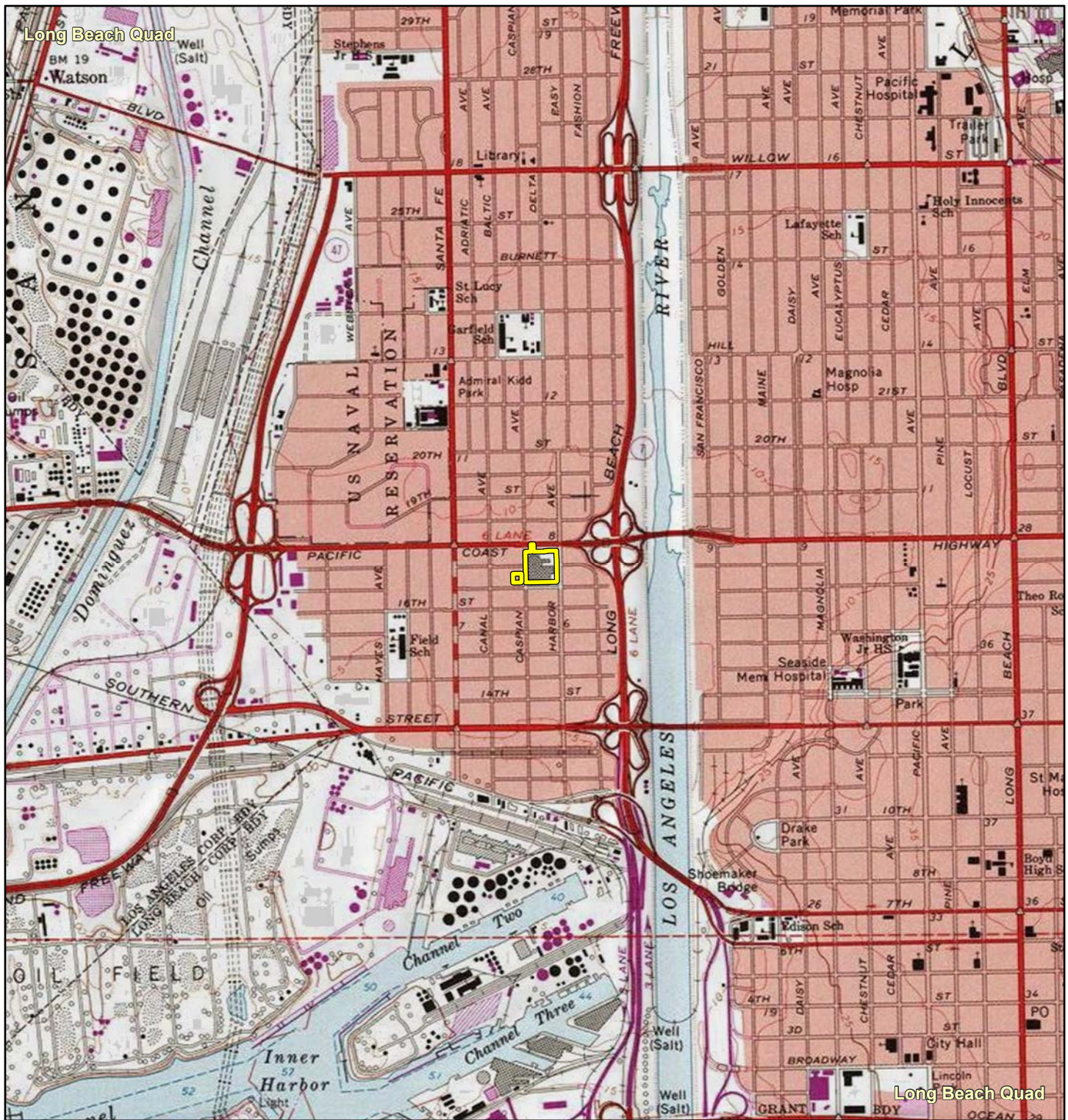
N



0 2.5 5 10
Miles

Source: Esri, ArcGIS Online, National Geographic World Map: Long Beach, California

Figure 1



GREEN TRUCKING FACILITY AND CONTAINER PROJECT
LONG BEACH, CA

Project Vicinity

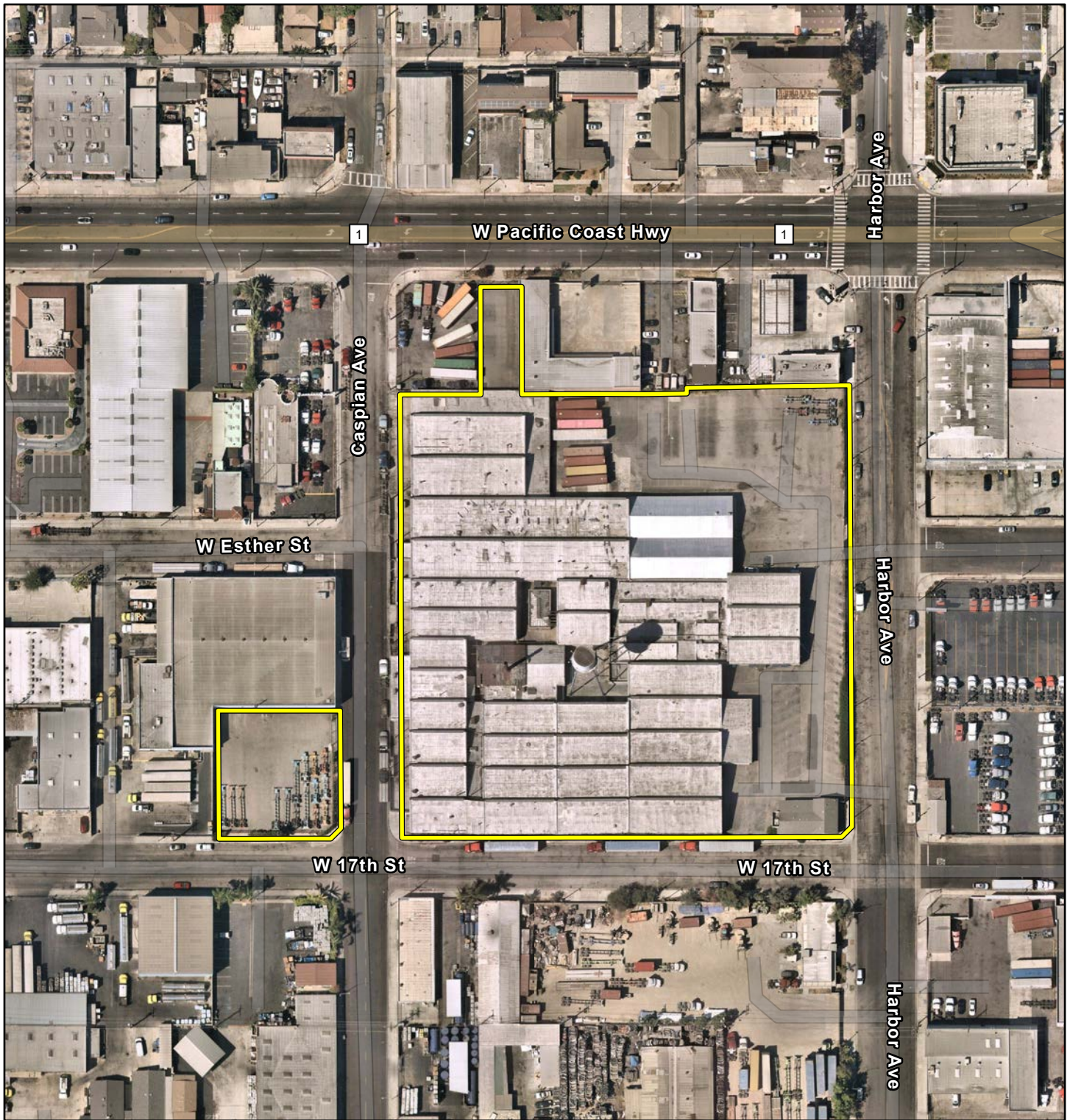
Michael Baker
INTERNATIONAL



0 0.13 0.25 0.5
Miles

Source: Esri, ArcGIS Online, USGS 7.5-Minute topographic quadrangle maps: Long Beach, California

Figure 2



 Project Area

GREEN TRUCKING FACILITY AND CONTAINER PROJECT
LONG BEACH, CA

Project Area

Michael Baker
INTERNATIONAL



0 50 100 200
Feet

Source: Esri, ArcGIS Online, 2021 Nearmap Imagery: Long Beach, California

Figure 3