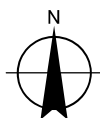


Map Projection: Lambert Conformal Conic
Horizontal Datum: North American 1983
Grid: NAD 1983 StatePlane California II FIPS 0402 Feet



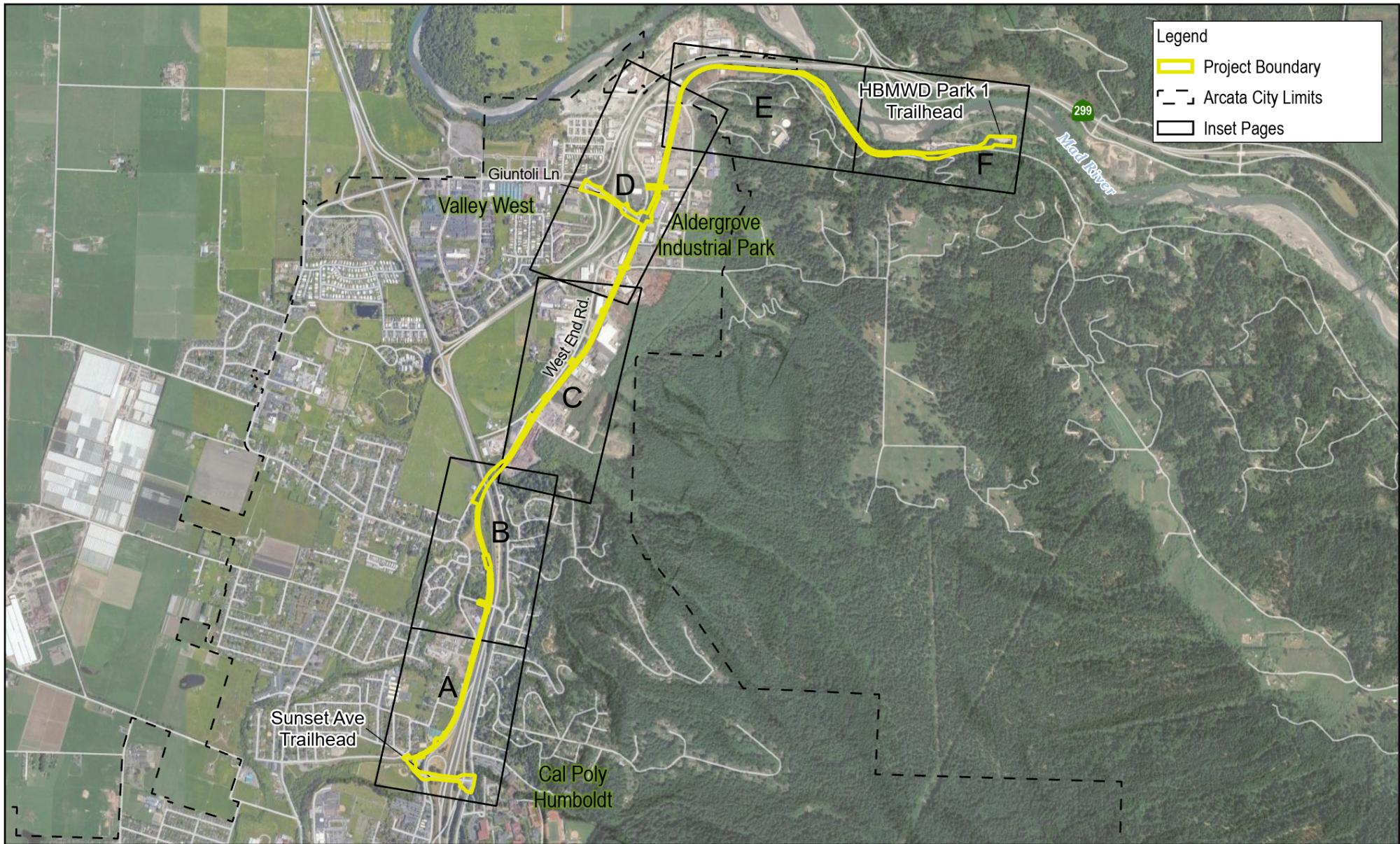
City of Arcata
Annie & Mary Trail
Connectivity Project

Project No. 11231361
Revision No. -
Date Feb 2022

Vicinity Map

FIGURE 1

Data source: transportation: USGS The National Map: National Transportation Dataset; U.S. Census Bureau - TIGER/Line; U.S. Forest Service. Data Refreshed January, 2022; World Imagery (Clarity): This work is licensed under the Esri Master License Agreement. View Summary | View Terms of Use. Export: This layer is not intended to be used to export tiles for offline. Data Collection and Editing: This layer may be used in various ArcGIS apps to support data collection and editing, with the results used internally or shared with others, as described for these use cases. World Topographic Map - labelless: California State Parks, Esri, HERE, Garmin, SafeGraph, METI/NASA, USGS, Bureau of Land Management, EPA, NPS, USDA, World Hillshade: Esri, NASA, NGA, USGS, FEMA; World Topographic Map - labelless: California State Parks, Esri, HERE, Garmin, FAO, NOAA, USGS, Bureau of Land Management, EPA, NPS, World Hillshade: Esri, CGIAR, USGS. Created by: jlopez4



Paper Size ANSI A
0 1,000 2,000
Feet

Map Projection: Lambert Conformal Conic
Horizontal Datum: North American 1983
Grid: NAD 1983 StatePlane California I FIPS 0401 Feet

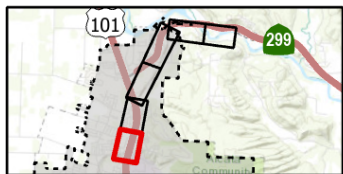
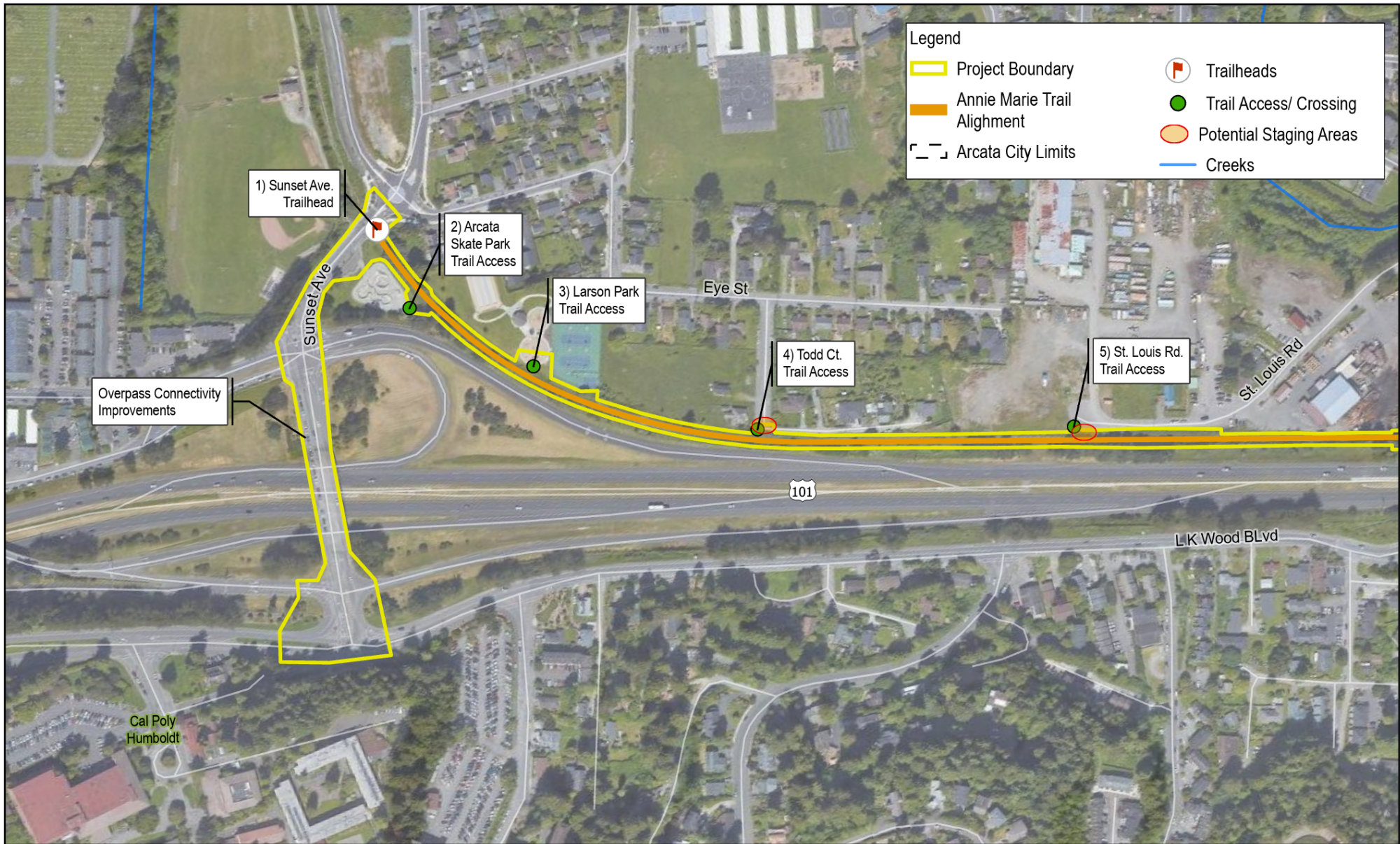


City of Arcata
Annie & Mary Trail
Connectivity Project

Project No. **1123161**
Revision No. -
Date **Oct 2022**

Project Overview

FIGURE 2



\\ghdnet\ghd\US\Burek\Projects\5611231361\GIS\Maps\Deliverables\1123161_ISMND_Figures\1123161_ISMND_Figures.aprx
1123161_002_Project_Overview_Mapseries RevA
Print date: 04 Oct 2022 - 12:18

Paper Size ANSI A

0 250 500
Feet

Map Projection: Lambert Conformal Conic
Horizontal Datum: North American 1983
Grid: NAD 1983 StatePlane California I FIPS 0401 Feet



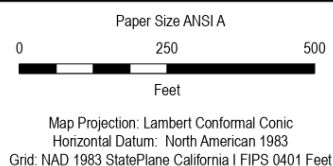
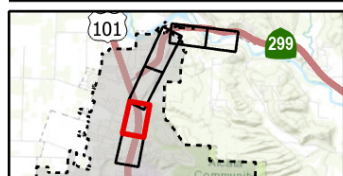
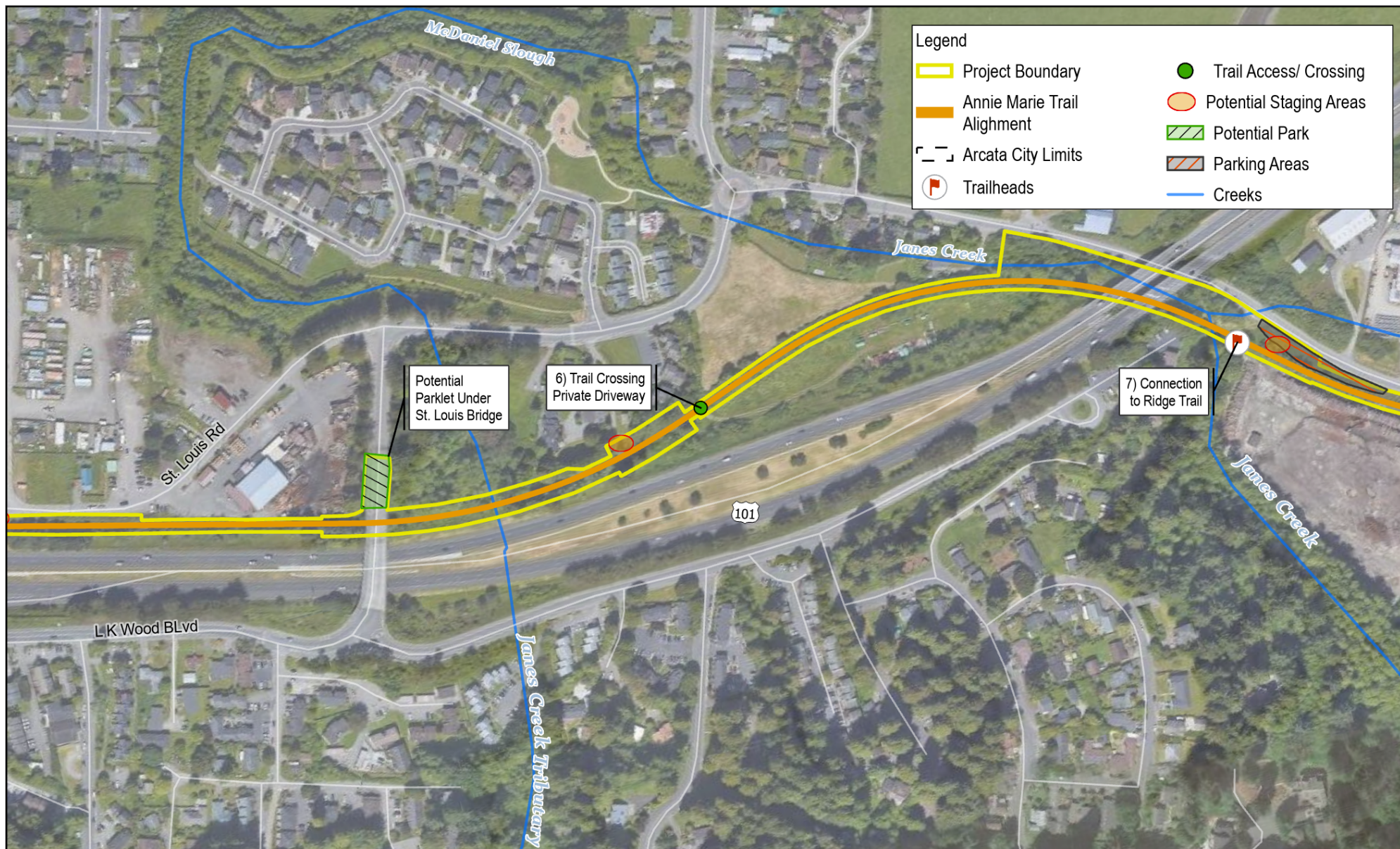
City of Arcata
Annie & Mary Trail
Connectivity Project

Project No. 1123161
Revision No. -
Date Oct 2022

Project Overview
Sunset Ave to St. Louis Rd

FIGURE 2A

Data source: World Imagery (Clarity): This work is licensed under the Esri Master License Agreement
 View Summary
View Terms of Use
 Data Collection and Editing This layer is not intended to be used to export tiles for offline.
 Use cases
 Tiled service layer: © OpenStreetMap (and) contributors, CC-BY-SA
transportation: USGS The National Map: National Transportation Dataset; U.S. Census Bureau – TIGER/Line; U.S. Forest Service, Data Refreshed July, 2022.
World Topographic Map: Bureau of Land Management, Esri, HERE, Garmin, USGS, NGA, EPA, USDA, NPS

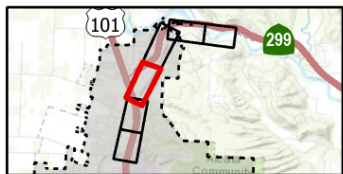
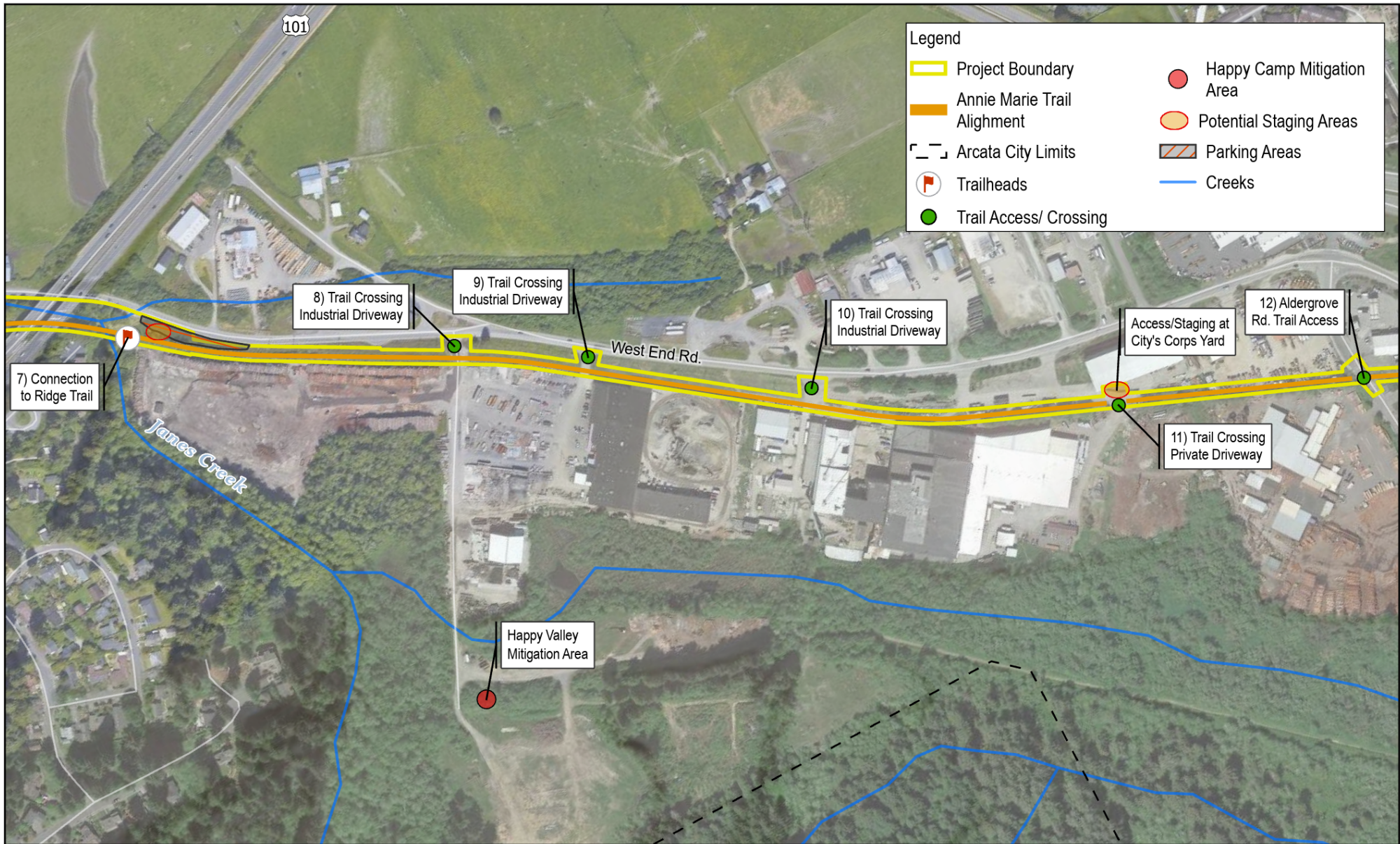


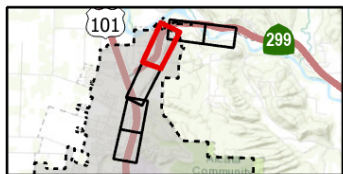
City of Arcata
Annie & Mary Trail
Connectivity Project

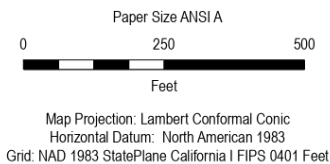
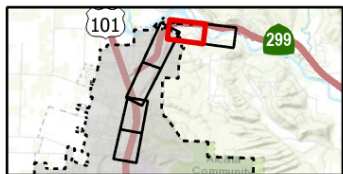
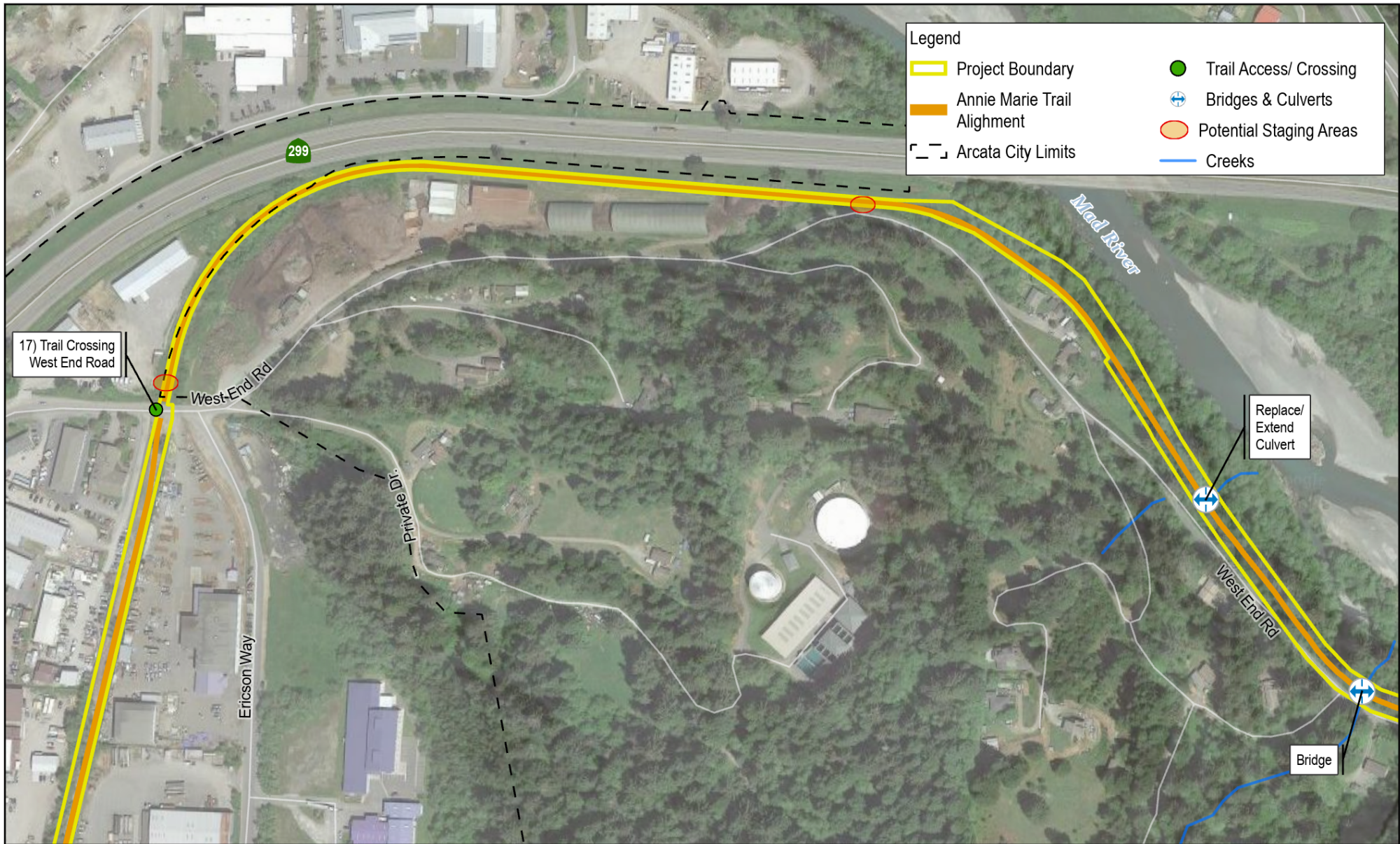
Project No. 1123161
Revision No. -
Date Oct 2022

Project Overview St. Louis Rd. to Arcata Ridge Trailhead

FIGURE 2B





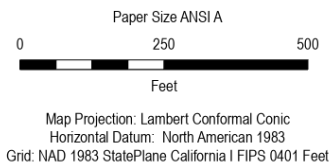
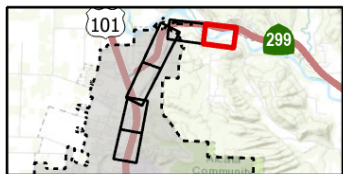


City of Arcata
Annie & Mary Trail
Connectivity Project

Project Overview
West End Road

Project No. 1123161
Revision No. -
Date Oct 2022

FIGURE 2E



City of Arcata
Annie & Mary Trail
Connectivity Project

Project No. 1123161
Revision No. -
Date Oct 2022

Project Overview West End Road and Park 1 Trailhead

FIGURE 2F