

FILED

OCT 27 2022

HUGH NGUYEN, CLERK-RECORDER

BY: PC DEPUTY

Attachment to Notice of Exemption

Renovation Project

THOMAS EDISON ELEMENTARY SCHOOL

ANAHEIM ELEMENTARY SCHOOL DISTRICT

SUPPLEMENTAL INFORMATION

POSTED

OCT 27 2022

ORANGE COUNTY CLERK-RECORDER DEPARTMENT

BY: PC DEPUTY

The Anaheim Elementary School District (District) proposes to renovate the Thomas Edison Elementary School (ES) campus. This supplemental information provides justification for the Categorical Exemption under California Code of Regulations, Title 14, Sections 15303 15314 (14 CCR §§ 15303 and 15314).

1. EXISTING CONDITIONS

PROJECT LOCATION

Thomas Edison ES is located in the City of Anaheim, in Orange County. The City of Anaheim is in northern Orange County and is surrounded by the cities of Fullerton and Placentia to the north; Orange to the east; Stanton and Garden Grove to the south; and Cypress and Buena Park to the west. Regional access to the schools is from State Route 91 (SR 91) located 0.25 miles to the north (see Figure 1, *Regional Location*).

The project site at 1526 East Romney Drive. Site boundaries include East Romney Drive to the north, Edison Park to the east, multifamily residential to the south, and North Acacia Street to the west. See Figure 2, *Local Vicinity*, and Figure 3, *Existing Site*.

EXISTING CONDITIONS

Thomas Edison ES is a TK-6th elementary school with an enrollment of 782 students as of the 2021/2022 (CDE 2022). The campus is currently developed with classrooms, restrooms, Learning Center / Resource Specialist (RSP), Special Day Class (SDC), flexible lab, psych office, counselor office, library, multipurpose room, administration offices, staff/visitor parking lot, pedestrian walkways, and landscaped areas. Main vehicular access to the parking lot is provided via Vermont Avenue (see Figure 3).

SURROUNDING LAND USES

Site boundaries include single family residential located to the north across East Romney Drive, single family residential and Edison Park to the east, multifamily residential to the south, and single family residential located to the west across North Acacia Street. The SR 91 is located 0.25 miles to the north of the project site (see Figure 1).

DISTRICT

The Anaheim Elementary School District spans approximately 20 square miles consisting of most of the City of Anaheim and includes 24 elementary schools. Districtwide enrollment in the 2021/2022 school year was 15,409 (CDE 2022).

2. PROJECT DESCRIPTION

The District proposes to develop a new 7,535-square-foot multi-use building, which will include two learning centers, flexible meeting rooms, innovation lab, a work room, and additional resources. The proposed project will also include two outdoor learning environments to the north and south of the multi-use building which will include seating areas. The proposed project will relocate the tether ball courts and includes modifications to fencing around the multi-use building (See Figure 4, *Site Plan*). The number of classrooms on the campus will not change and therefore will not change original student capacity.

POSTED

OCT 27 2022

REMOVAL

All existing structures will remain, and none will be removed.

ORANGE COUNTY CLERK-RECORDER DEPARTMENT

CONSTRUCTION

BY: PC DEPUTY

The project involves:

- » Construction of the new multi-use building and associated outdoor learning space
- » Modifications to fencing around multi-use building
- » Relocation of Tether Ball

FILED

OCT 27 2022

HUGH NGUYEN, CLERK-RECORDER

3. REASONS WHY THE PROJECT IS EXEMPT

BY: PC DEPUTY

The proposed project is exempt from further environmental review under the requirements of the California Environmental Quality Act (Public Resources Code Sections 21000 et seq.) because it is consistent with the following classes of Categorical Exemption:

- » **Class 3, New Construction or Conversion of Small Structures (CEQA Guidelines § 15303)** consists of the construction and location of limited numbers of new, small facilities or structures; installation of small new equipment and facilities in small structures; and the conversion of existing small structures from one use to another where only minor modifications are made in the exterior of the structure.

The proposed fencing modifications and relocation of the tether ball courts are exempt from CEQA under Class 3, New Construction or Conversion of Small Structures (Section 15303), which includes "Accessory structures including garages, carports, patios, swimming pools, and fences." Since the proposed project includes modifications to fencing and tether ball courts are located within the same project site as the existing school, the project is exempt from CEQA under Section 15303.

- » **Class 14, Minor Additions to Schools (CEQA Guidelines § 15314)** consists of minor additions to existing schools within existing school grounds where the addition does not increase original student capacity by more than 25% or ten classrooms, whichever is less. The addition of portable classrooms is included in this exemption.

The proposed multi-use building is exempt from CEQA under Class 14, Minor Additions to Schools (Section 15314), which includes consists of "minor additions to existing schools" and "does not increase original student capacity." School capacity will not be affected as classroom numbers will not change. Existing use of the facility as an elementary school will stay the same under the proposed project. Since the multi-use building is a minor expansion to the existing school and do not increase student capacity, the project is exempt from CEQA under Section 15314.

4. REVIEW OF EXCEPTIONS TO THE CATEGORICAL EXEMPTION

The proposed project has been reviewed under CEQA Guidelines § 15300.2 - Exceptions, for any characteristics or circumstances that might invalidate findings that the proposed project is exempt from CEQA. Each exception is listed below followed by an assessment of whether that exception applies to the proposed project.

- (a) **Location.** Classes 3,4,5,6 and 11 are qualified by consideration of where the project would be located—a project that is ordinarily insignificant in its impact on the environment may in a particularly sensitive environment be significant. Therefore, these classes are considered to apply all instances, except where the project may impact on an environmental resource of hazardous or critical concern where designated, precisely mapped and officially adopted pursuant to law by federal, state, or local agencies.

The project site is a built-out elementary school adjacent to single-family, multifamily residential, and park uses. Due to the project site's and the school's developed nature and frequent human disturbance, no environmental resources of critical concern—such as threatened or endangered species or habitats thereof; or critical habitat designated by the US Fish and Wildlife Service pursuant to the federal Endangered Species Act—are present onsite. No mapped wetlands exist on the site (USFWS 2022). Thomas Edison ES is not a hazardous materials site (see *Hazardous Waste Sites* below). Therefore, the Location exception does not apply to the proposed project.

- (b) **Cumulative Impacts.** All exemptions for these classes are inapplicable when the cumulative impact of successive projects of the same type in the same place, over time is significant.

The District does not intend to construct any additional project of the same type at the project site over time. There are currently various projects occurring at other schools within the District. Construction schedules at other District school improvement sites could overlap with the proposed project. However, proposed improvements at each school will be executed individually and are anticipated to have site-specific impacts. Similar projects at nearby schools will not have an impact on the proposed project. Thus, the proposed project, when combined with cumulative District projects, will not create a significant cumulative impact under CEQA. Therefore, no cumulative impacts will occur, and this exception does not apply to the proposed project.

- (c) **Significant Effects.** A categorical exemption shall not be used for an activity where there is a reasonable possibility that the activity will have a significant effect on the environment due to unusual circumstances.

There is no reasonable possibility that the proposed project will have a significant effect on the environment due to unusual circumstances. The proposed project will not increase the capacity of the school or increase building area. The construction manager will execute construction activities per current local, state, and federal laws, regulations, construction Best Management Practices, District standards, and guidelines.

There will be some temporary noise and vibration impacts associated with construction activities. However, all temporary construction and vibration impacts, and operational noise impacts, are considered less than significant. Therefore, this exception does not apply to the proposed project.

- (d) **Scenic Highways.** A categorical exemption shall not be used for a project which may result in damage to scenic resources, including but not limited to, trees, historic buildings, rock outcroppings or similar resources, within a highway officially designated as a state scenic highway.

The closest officially designated state scenic highway is SR 91, approximately 0.25 miles to the north of the project site (Caltrans 2021). Since the proposed project is currently a build out school in a developed area and the proposed project includes replacing the existing school structures with new structures within the same project site, the proposed project will not affect this highway; thus, the proposed project will not affect scenic resources along any scenic highways. Therefore, this exception does not apply to the proposed project.

- (e) **Hazardous Waste Sites.** A categorical exemption shall not be used for a project located on a site which is included on any list compiled pursuant to Government Code § 65962.5.

California Government Code Section 65962.5 requires the compiling of lists of the following types of hazardous materials sites: hazardous waste facilities subject to corrective action; hazardous waste discharges for which the State Water Quality Control Board has issued certain types of orders; public drinking water wells containing detectable levels of organic contaminants; underground storage tanks with reported unauthorized releases; and solid waste disposal facilities from which hazardous waste has migrated.

POSTED

FILED

OCT 27 2022

OCT 27 2022

SAN JOSE COUNTY CLERK-RECORDER DEPARTMENT

HUGH NGUYEN, CLERK-RECORDER

Five environmental databases were searched for hazardous materials sites on the site and within a quarter mile radius:

- » EnviroStor. Department of Toxic Substances Control (DTSC 2022)
- » GeoTracker. State Water Resources Control Board (SWRCB 2022)
- » EJScreen. US Environmental Protection Agency (USEPA 2022a)
- » EnviroMapper. US Environmental Protection Agency (USEPA 2022b)
- » Solid Waste Information System. California Department of Resources Recycling and Recovery (CalRecycle 2022)

According to the DTSC's EnviroStor, the project site is currently identified as a school clean-up site. However, as of January 2012, it has a status of no further action is necessary (DTSC 2022).

The project site and its surroundings are not identified in any of the other databases and are not identified as a hazardous materials site pursuant to Government Code Section 65962.5. Therefore, the proposed project will not create a hazard to the public. This exception does not apply to the proposed project.

- (f) **Historical Resources.** A categorical exemption shall not be used for a project which may cause a substantial adverse change in the significance of historical resources. Under Public Resource Code § 21084.1, a historical resource is a resource listed in or determined to be eligible for listing in the California Register of Historical Resources. Additionally, historical resources included in a local register of historical resources are presumed to be historically or culturally significant, and a lead agency can determine whether the resource may be an historical resource.

There are no historic resources on or within a 0.25-mile radius of the campus that are listed on the National Register of Historic Places (NPS 2022), the California Register of Historical Resources, or as a California State Historical Landmark (OHP 2022). Therefore, project implementation will not cause significant impacts to historical resources, and the historical resources exception will not apply to the proposed project.

5. CONCLUSION

The proposed project at the Thomas Edison ES is exempt from CEQA review pursuant to CEQA Guidelines Section 15303 and 15314. As substantiated in this document, the proposed project will not meet the conditions specified in § 15300.2, Exceptions, of the CEQA Guidelines, and the proposed project is categorically exempt under Class, 3 and 14.

6. REFERENCES

- Anaheim, City of. 2021. City of Anaheim Municipal Code.
<https://codelibrary.amlegal.com/codes/anaheim/latest/overview>
- California Department of Education (CDE). 2022. 2021-22 Enrollment by Ethnicity and Grade Edison (Thomas) Elementary School Report (30-66423-6027429).
- California Department of Resources Recycling and Recovery (CalRecycle). 2022. SWIS Facticity/Site Search.
<https://www2.calrecycle.ca.gov/SolidWaste/Site/Search>
- California Department of Transportation (Caltrans). 2022. California Highway System.
<https://www.arcgis.com/apps/webappviewer/index.html?id=2e921695c43643b1aaf7000dfcc19983>
- Department of Toxic Substances Control (DTSC). 2022. EnviroStor. <https://www.envirostor.dtsc.ca.gov/public/>
- National Park Service (NPS). 2022. National Register of Historic Places. <https://www.nps.gov/maps/>.

BY:

DEPUTY

HUGH NGUYEN, CLERK-RECORDER

OCT 27 2022

FILED

ORANGE COUNTY CLERK-RECORDER DEPARTMENT
BY: *yc*
DEPUTY

OCT 27 2022

POSTED

Office of Historic Preservation (OHP). 2022. California Historical Resources.
<https://ohp.parks.ca.gov/ListedResources/>.

State Water Resources Control Board (SWRCB). 2022. GeoTracker. <https://geotracker.waterboards.ca.gov/>

US Environmental Protection Agency (USEPA). 2022a. EJSCREEN. <https://ejscreen.epa.gov/mapper/>.

US Environmental Protection Agency (USEPA). 2022b EnviroMapper for EnviroFacts.
<https://enviro.epa.gov/enviro/em4ef.home>

U.S. Fish & Wildlife Service (USFWS). 2022. National Wetlands Inventory – Wetlands Mapper.
<https://www.fws.gov/wetlands/data/mapper.HTML>.

POSTED

OCT 27 2022

ORANGE COUNTY CLERK-RECORDER DEPARTMENT
BY: RC DEPUTY

FILED

OCT 27 2022

HUGH NGUYEN, CLERK-RECORDER

BY: RC DEPUTY

OCT 27 2022

OCT 27 2022

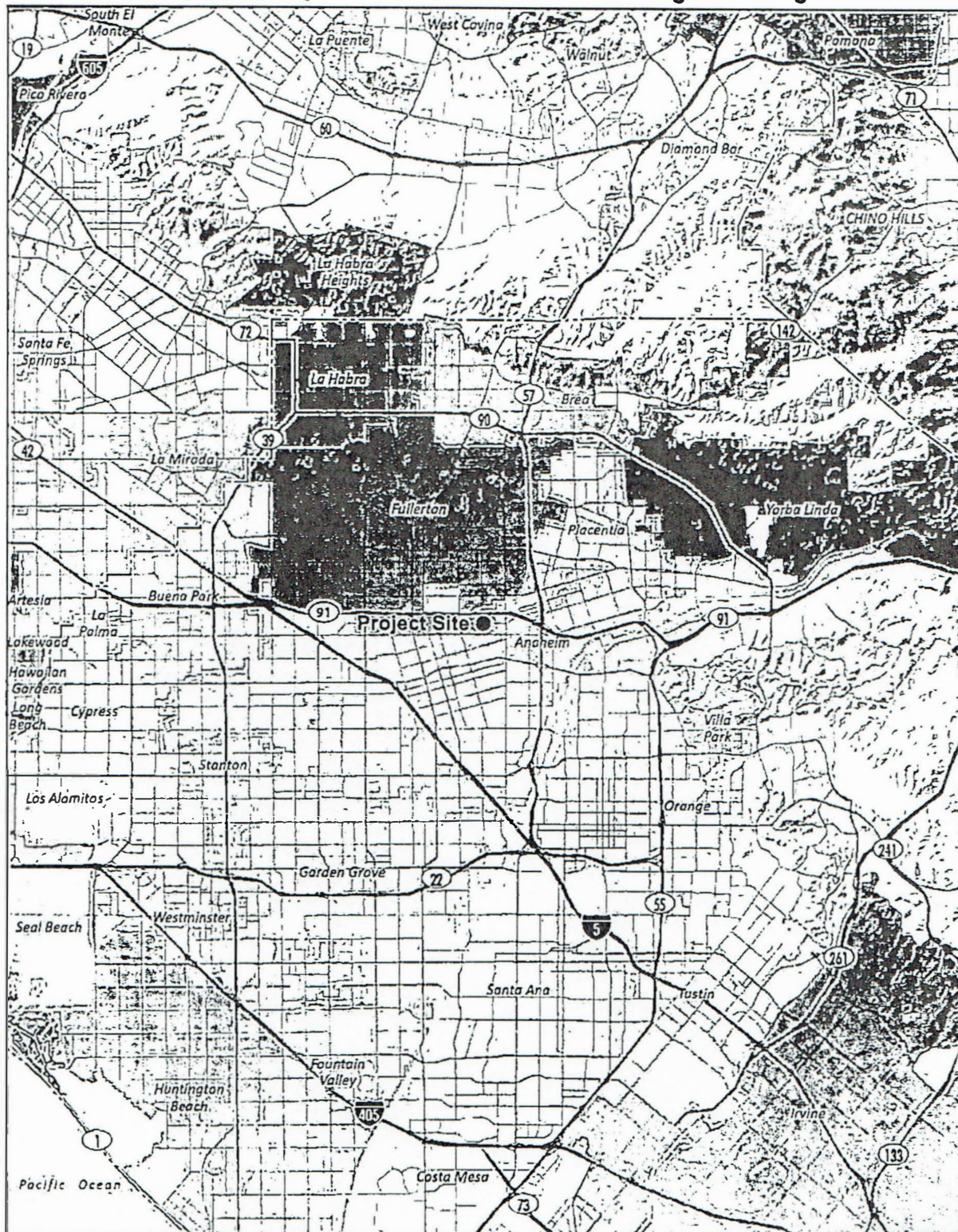
THOMAS EDISON ELEMENTARY SCHOOL NOTICE OF EXEMPTION
ANAHEIM ELEMENTARY SCHOOL DISTRICT

UGH NGUYEN, CLERK-RECORDER

DEPUTY ORANGE COUNTY CLERK-RECORDER DEPARTMENT

BY: DEPUTY

Figure 1 - Regional Location



Note: Unincorporated county areas are shown in white.

Source: Generated using ArcMap, 2022.

0 3
Scale (Miles)



PlaceWorks

POSTED

OCT 27 2022

THOMAS EDISON ELEMENTARY SCHOOL NOTICE OF EXEMPTION
ANAHEIM ELEMENTARY SCHOOL DISTRICT

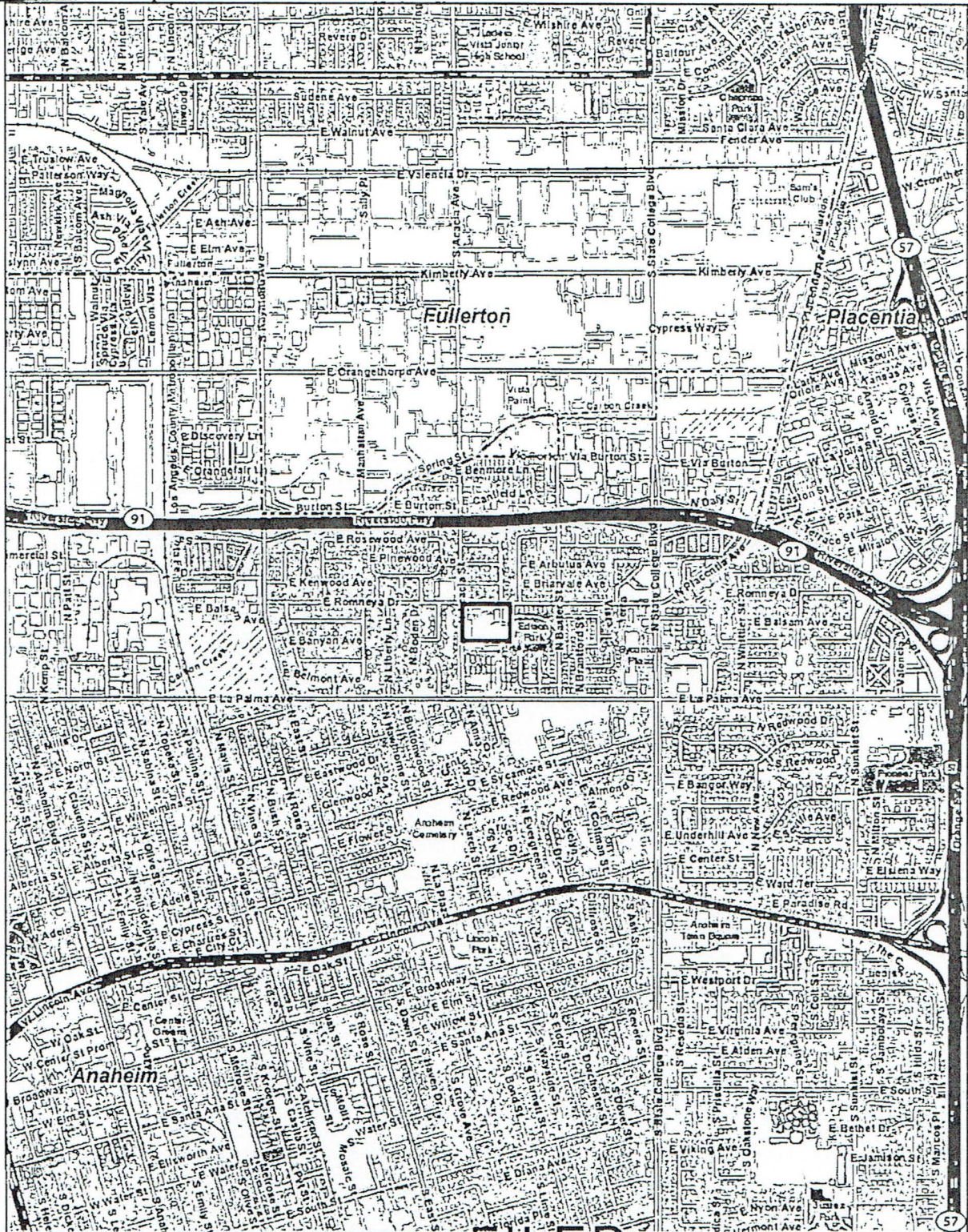
ORANGE COUNTY CLERK-RECORDER DEPARTMENT

BY:

[Signature]

DEPUTY

Figure 2 - Local Vicinity



— Thomas Edison Elementary School Boundary
- - - City Boundary

Source: Generated using ArcMap, 2022.

FILED

OCT 27 2022

0 2,000
Scale (Feet)



HUGH NGUYEN, CLERK-RECORDER

PlaceWorks

[Signature]

DEPUTY

POSTED

OCT 27 2022

THOMAS EDISON ELEMENTARY SCHOOL NOTICE OF EXEMPTION
ANAHEIM ELEMENTARY SCHOOL DISTRICT

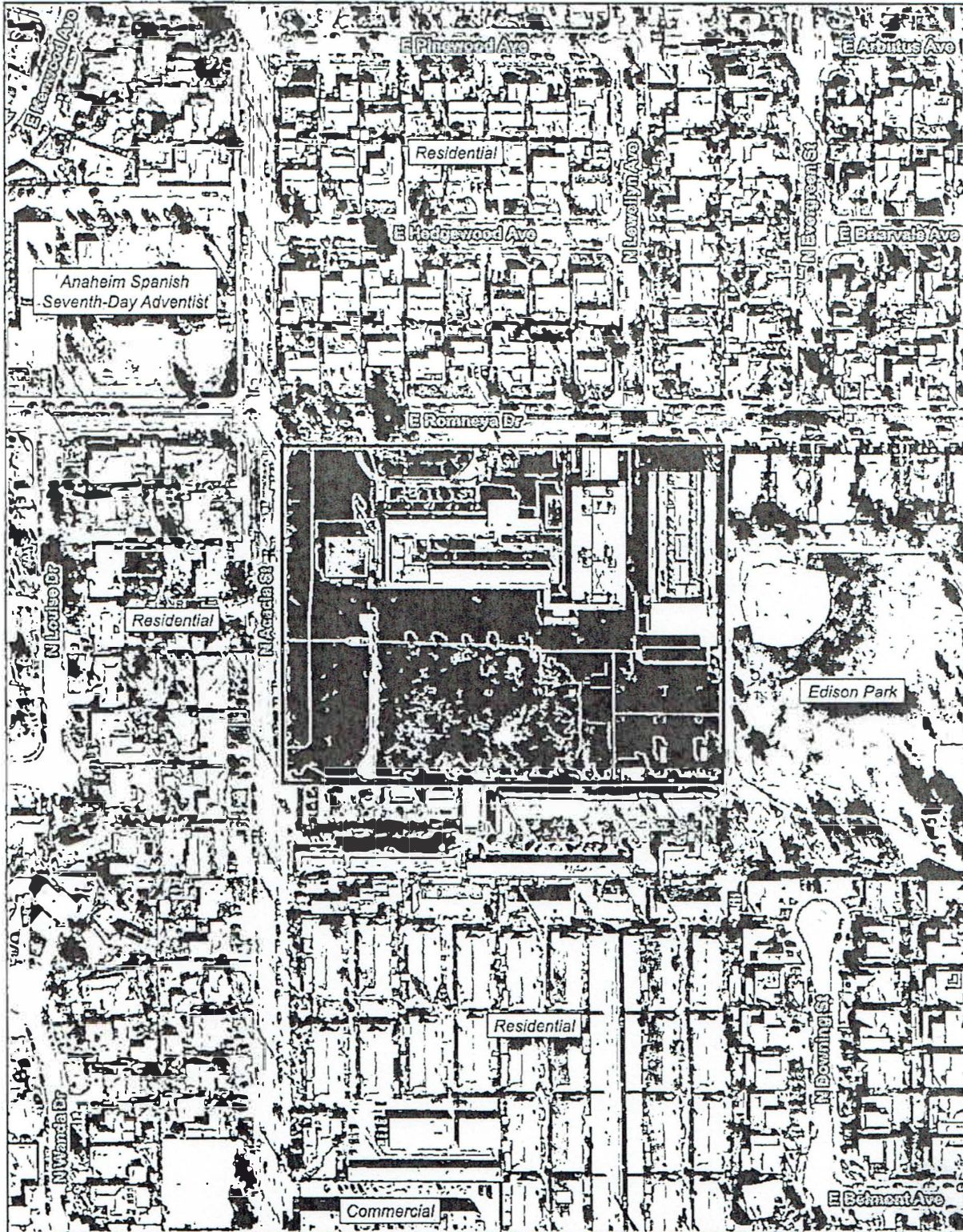
ORANGE COUNTY CLERK-RECORDER DEPARTMENT

BY:

PC

DEPUTY

Figure 3 - Existing Site



Thomas Edison Elementary School Boundary

FILED

0 200
Scale (Feet)

Source: Nearmap Inc., 2022.

OCT 27 2022



PlaceWorks

HUGH NGUYEN, CLERK-RECORDER

BY:

PC

DEPUTY

POSTED

OCT 27 2022

CRANE COUNTY CLERK-RECORDER DEPARTMENT

BY: PC DEPUTY

FILED

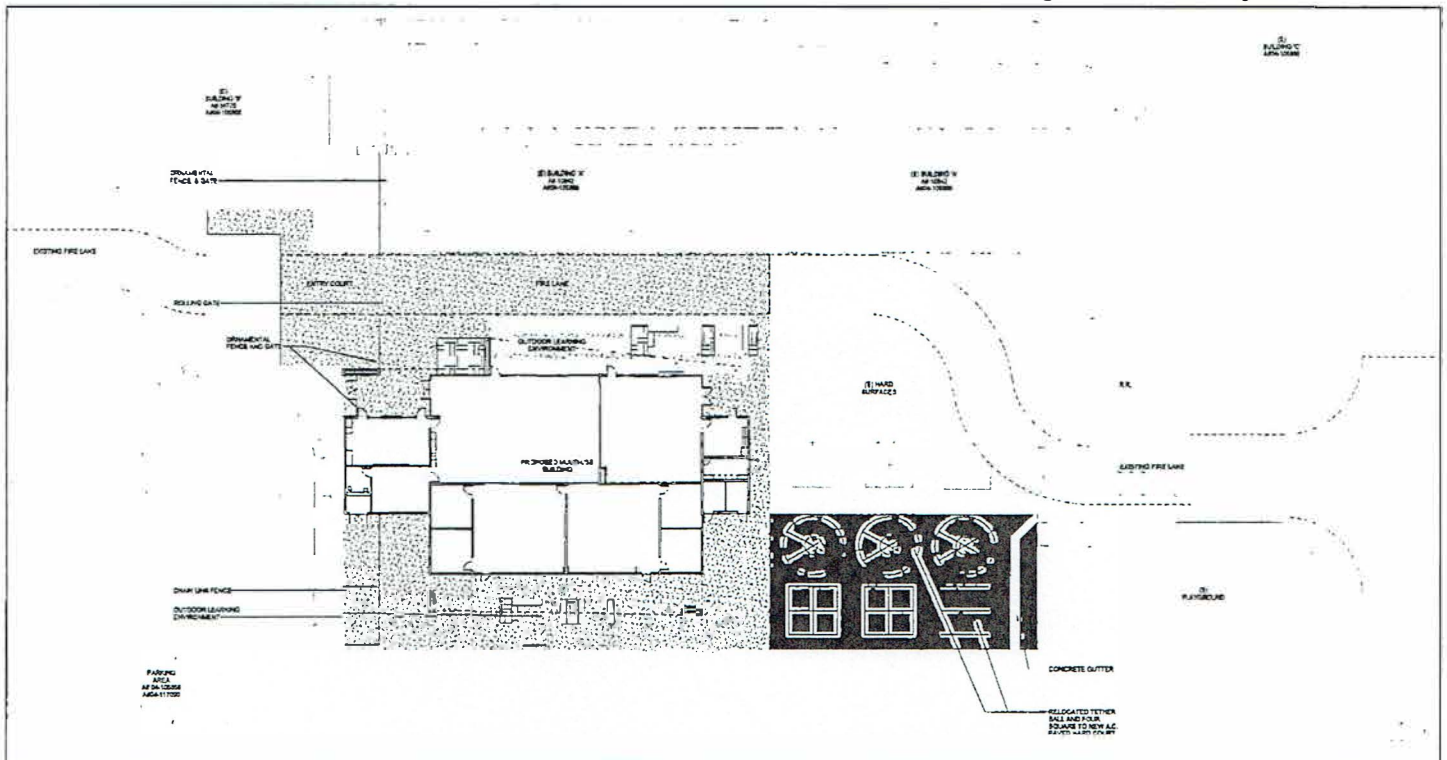
OCT 27 2022

HUGH NGUYEN, CLERK-RECORDER

BY: PC DEPUTY

THOMAS EDISON ELEMENTARY SCHOOL NOTICE OF EXEMPTION
ANAHEIM ELEMENTARY SCHOOL DISTRICT

Figure 4 - Elementary School Site Plan



Source: HMC Architects, 2022.

0 65
Scale (Feet)



PlaceWorks