

- ☒ County Clerk
- ☒ Interested Parties

**COUNTY OF LAKE
NOTICE OF INTENT
TO ADOPT A MITIGATED NEGATIVE DECLARATION**

Project Title: Pacific Cann, Inc.; Major Use Permit (UP 21-16); Initial Study (IS 21-17)

Project Location: 9141 State Highway 175, Kelseyville, CA 95451

APN No: 011-060-01

Project Description:

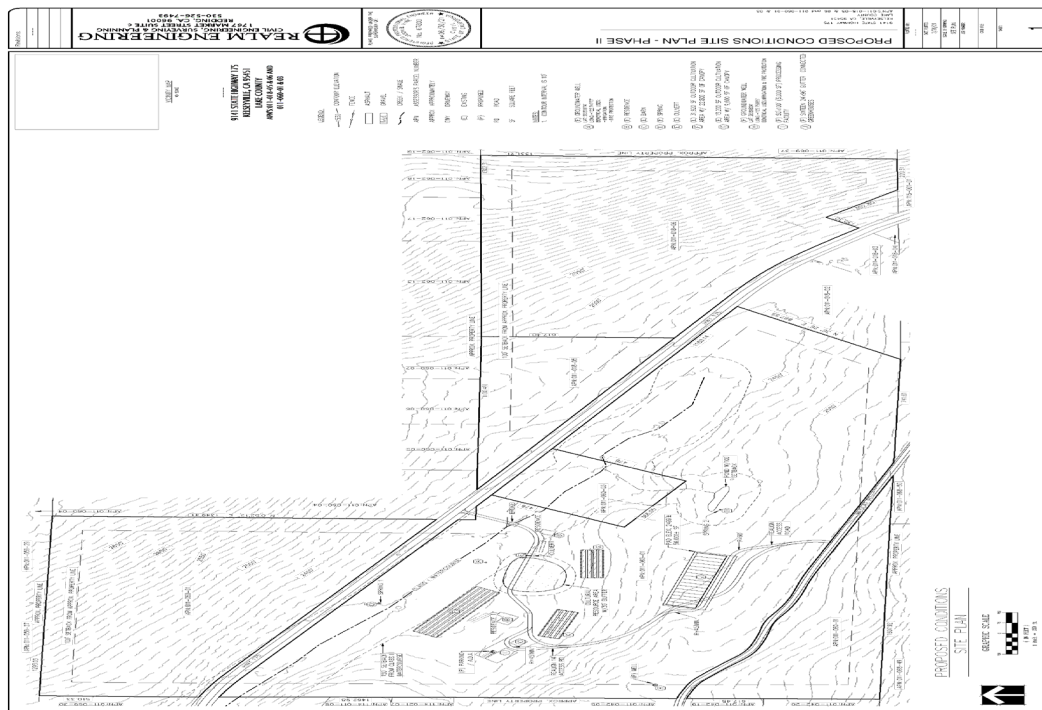
Pacific Cann, Inc. (Pacific Cann) is seeking a Major Use Permit from the County of Lake, for a proposed commercial cannabis cultivation operation at 9141 State Highway 175 near Kelseyville, California on Lake County APN 011-060-01 (Project Parcel). The proposed commercial cannabis cultivation operation would be composed of a 31,920 ft² outdoor cultivation area with 22,800 ft² of cannabis canopy, two 13,200 ft² outdoor cultivation areas with 9,600 ft² of cannabis canopy each, sixteen 2,304 ft² mixed-light cultivation areas/greenhouses with up to 1,875 ft² of cannabis canopy each, a 5,000 ft² Processing Building/Facility, and an existing 2,000 ft² barn.

The proposed cultivation areas will be enclosed with 6-foot tall galvanized woven wire fences, covered with privacy screen/mesh where necessary to screen the cultivation areas from public view. The growing medium of the proposed cultivation operation will be an imported organic soil mixture in garden beds and nursery pots, with drip and micro-spray irrigation systems. An existing onsite groundwater well will serve as the primary water source for the proposed cultivation operation.

The public review period for the respective proposed Mitigated Negative Declaration based on Initial Study IS 21-17 will begin on September 26, 2022 and end on October 24, 2022 . You are encouraged to submit written comments regarding the proposed Mitigated Negative Declaration. You may do so by submitting written comments to the Planning Division prior to the end of the review period. Copies of the application, environmental documents, and all reference documents associated with the project are available for review through the **Community Development Department, Planning Division; telephone (707) 263-2221**. Written comments may be submitted to the Planning Division or via email at Andrew.Amelung@lakecountyca.gov.



Vicinity Map of Pacific Cann, Inc. Proposed Cannabis Project



Pacific Cann, In. Proposed Conditions Site Plan