



TW Biological Services

1717 Meander Drive, Simi Valley, CA 93065
(949) 463-3497

June 15, 2022

ENV-01-22

Mr. Travis Cullen
Envicom Corporation
4165 E. Thousand Oaks Blvd., Suite 290
Westlake Village, CA 91362

Subject: Presence/Absence Surveys for Coastal California Gnatcatcher on the Moorpark 67/North Ranch Residential Development Project, Ventura County, California. Permit Number TE-19843C-0

Dear Mr. Cullen:

A focused coastal California gnatcatcher (*Poliophtila californica californica*) survey was conducted by TW Biological Services wildlife biologist Jennifer Sexton, permit number TE-19843C-0, for the Moorpark 67/North Ranch Residential Development Project site between 3 April and 23 May, 2022. The survey consisted of six presence/absence surveys within suitable habitat on the property.

The coastal California gnatcatcher is a California Department of Fish and Game (CDFG) species of special concern and a federally-listed threatened species. It is a non-migratory species that prefers sage scrub habitat with California sagebrush (*Artemisia californica*) as its dominant or codominant species. It is also known to utilize chaparral, grassland and riparian habitats bordered by sage scrub for foraging or dispersal. It typically nests at elevations below 950 feet on slopes less than 40 percent but may occur in areas of higher elevation and steeper terrain. The species is threatened primarily by loss, degradation, and fragmentation of sage scrub habitat and is also impacted by brown-headed cowbird parasitism.

PROJECT LOCATION AND DESCRIPTION

The Moorpark 67/North Ranch Residential Development Project site consists of approximately 70-acre undeveloped property located in the hills above the north side of Little Simi Valley in the City of Moorpark, Ventura County, California (see attached Figure 1). The property is bordered on the east by Gabbert Road, on the north by large residential lots, on the west by an abandoned reservoir, and on the south by open space. The site is located in the northeast quarter of Section 6, Township 2N, Range 19W of the USGS 7.5' Moorpark topographic quadrangle map.

The site is characterized by low, grass-covered hills with elevations ranging between 510 feet above mean sea level (AMSL) in the southwestern portion of the site to 590 feet AMSL in the northeastern portion of the site. A prominent drainage extends from north to south across roughly the center-eastern part of the property.

General Existing Conditions and Vegetation

Limited areas of development are present on the site, including paved and dirt roads, and isolated building pads. Most of the building pads are vacant, with the exception of one that has a remaining structure and another with an old tennis court. The remainder of the site is covered primarily by ruderal grassland with scattered concentrations of California sagebrush scrub of varying density. Exceptions include landscaping in the northeast corner, California sagebrush scrub along the eastern edge and in northwest corner, scale broom scrub in the extreme northwest corner, and mulefat scrub present along a prominent north to south drainage. A detailed map of the vegetation communities onsite prepared by Envicom Corporation was provided for our use in this report and is included here as Attachment 3 (Envicom, 2021).

METHODS

The focused survey for coastal California gnatcatcher was conducted on the Moorpark 67/North Ranch Residential Development Project site between 3 April and 23 May 2022 by TW Biological Services wildlife biologist Jennifer Sexton (*Table 1*). Ms. Sexton holds a federal permit (TE-19843C-0) to conduct surveys for the California gnatcatcher. The survey was conducted following the currently accepted protocol of the U.S. Fish and Wildlife Service and the Scientific Review Panel for areas outside NCCP enrollments (USFWS, 1997). The survey included six surveys of the project area at approximately weekly intervals. In particular, areas of coastal sage scrub vegetation were visited during each survey. The route used to survey the habitat varied little and was arranged to ensure complete coverage of the habitat and site. Binoculars (10 x 40) were used to aid in detecting and identifying bird species. The weather conditions were generally mild as shown in the table below. A tape of recorded vocalizations was used as necessary in order to elicit responses from the species. The tape was played approximately every 100 feet or more frequently if it appeared that there was sound attenuation due to topography.

TABLE 1
Moorpark 67/North Ranch Residential Development Survey Dates and Conditions

Date	Time	Temperature (°F)	Wind (MPH)	Cloud Cover (%)
4/3/22	0645-1030	58-62	0-5	0
4/10/22	0710-1035	65-74	0-3	0
4/18/22	0700-1030	57-63	0-1	0
5/4/22	0715-1030	57-65	0-0	100
5/14/22	0600-0910	63-75	0-0	0
5/23/22	0610-0900	55-56	2-2	100

RESULTS

No gnatcatchers were detected during the survey. Survey conditions and level of effort were appropriate for detection of this species.

Survey routes are included on *Figure 2*. Other wildlife detected are included in the Appendix.

If you have any questions or comments, please do not hesitate to contact me at (949) 463-3497.

Very truly yours,



Jennifer Sexton
Principal /Senior Wildlife Biologist
TW Biological Services

Att. *Figures 1 – 2, Attachment 3*

cc: *Chris Kofron, USFWS Ventura*

REFERENCES

Envicom Corporation. 2021. Moorpark 67/North Ranch Residential Development Biological Resources Technical Report Update, July 29, 2021

U.S. Fish and Wildlife Service (USFWS). 1997. Coastal California Gnatcatcher (*Polioptila californica californica*) Presence/Absence Survey Guidelines. February 28, 1997.

APPENDIX A
CUMULATIVE LIST OF WILDLIFE SPECIES OBSERVED ONSITE

BIRDS

CATHARTIDAE - NEW WORLD VULTURES

Cathartes aura - turkey vulture

ACCIPITRIDAE – HAWKS

Accipiter cooperii - Cooper's hawk

CHARADRIIDAE - PLOVERS

Charadrius vociferus - killdeer

PHASIANIDAE - PHEASANTS & QUAILS

Callipepla californica - California quail

COLUMBIDAE - PIGEONS & DOVES

Zenaida macroura - mourning dove

CUCULIDAE - CUCKOOS & ROADRUNNERS

Geococcyx californianus - greater roadrunner

APODIDAE - SWIFTS

Aeronautes saxatalis - white-throated swift

TROCHILIDAE - HUMMINGBIRDS

Calypte anna - Anna's hummingbird

PICIDAE - WOODPECKERS

Picoides nuttallii - Nuttall's woodpecker

TYRANNIDAE - TYRANT FLYCATCHERS

Sayornis nigricans - black phoebe

Tyrannus vociferans - Cassin's kingbird

HIRUNDINIDAE - SWALLOWS

Stelgidopteryx serripennis - northern rough-winged swallow

Petrochelidon pyrrhonota - cliff swallow

APPENDIX A
CUMULATIVE LIST OF WILDLIFE SPECIES OBSERVED ONSITE

CORVIDAE - JAYS & CROWS

Apelocoma californica - western scrub-jay
Corvus brachyrhynchos - American crow
Corvus corax - common raven

AEGITHALIDAE - BUSHTITS

Psaltiriparus minimus - bushtit

TROGLODYTIDAE - WRENS

Thryomanes bewickii - Bewick's wren
Troglodytes aedon - house wren

SYLVIIDAE - GNATCATCHERS

Polioptila caerulea - blue-gray gnatcatcher

TIMALIIDAE - LAUGHINGTHRUSH AND WRENTIT

Chamaea fasciata – wrentit

MIMIDAE - THRASHERS

Mimus polyglottos - northern mockingbird
Toxostoma redivivum - California thrasher

PTILOGONATIDAE - SILKY-FLYCATCHERS

Phainopepla nitens – phainopepla

PARULIDAE - WOOD WARBLERS

Dendroica coronata - yellow-rumped warbler
Wilsonia pusilla - Wilson's warbler

EMBERIZIDAE - BUNTINGS & SPARROWS

Pipilo crissalis - California towhee
Pipilo maculatus - spotted towhee
Zonotrichia leucophrys - white-crowned sparrow

ICTERIDAE - BLACKBIRDS & ORIOLES

Icterus cucullatus - hooded orio

APPENDIX A
CUMULATIVE LIST OF WILDLIFE SPECIES OBSERVED ONSITE

FRINGILLIDAE - FINCHES

Carpodacus mexicanus - house finch

Carduelis psaltria - lesser goldfinch

PASSERIDAE - OLD WORLD SPARROWS

* *Passer domesticus* - house sparrow

MAMMALS

LEPORIDAE - HARES & RABBITS

Sylvilagus audubonii - desert cottontail

SCIURIDAE - SQUIRRELS

Spermophilus beecheyi - California ground squirrel

CANIDAE - WOLVES & FOXES

Canis latrans - coyote

REPTILES

IGUANIDAE - IGUANID LIZARDS

Uta stansburiana – side-blotched lizard

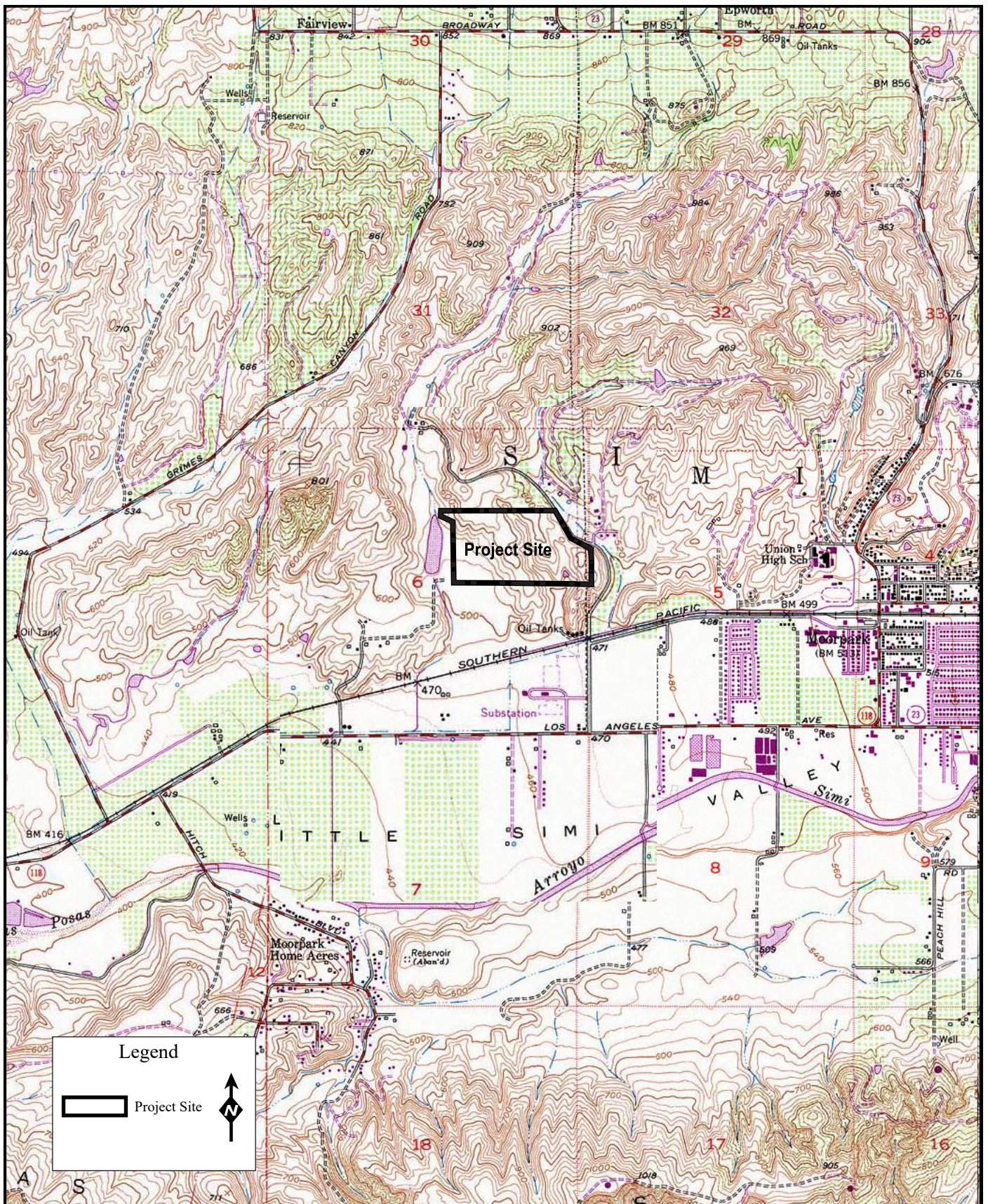
BUTTERFLIES AND MOTHS

PIERIDAE - WHITES AND SULFURS

Pieris rapae rapae - cabbage butterfly

NYMPHALIDAE - BRUSH-FOOTED BUTTERFLIES

Danaus plexippus – monarch



TW Biological Services

**MOORPARK 67/ NORTH RANCH
RESIDENTIAL DEVELOPMENT PROJECT
CALIFORNIA GNATCATCHER SURVEY**

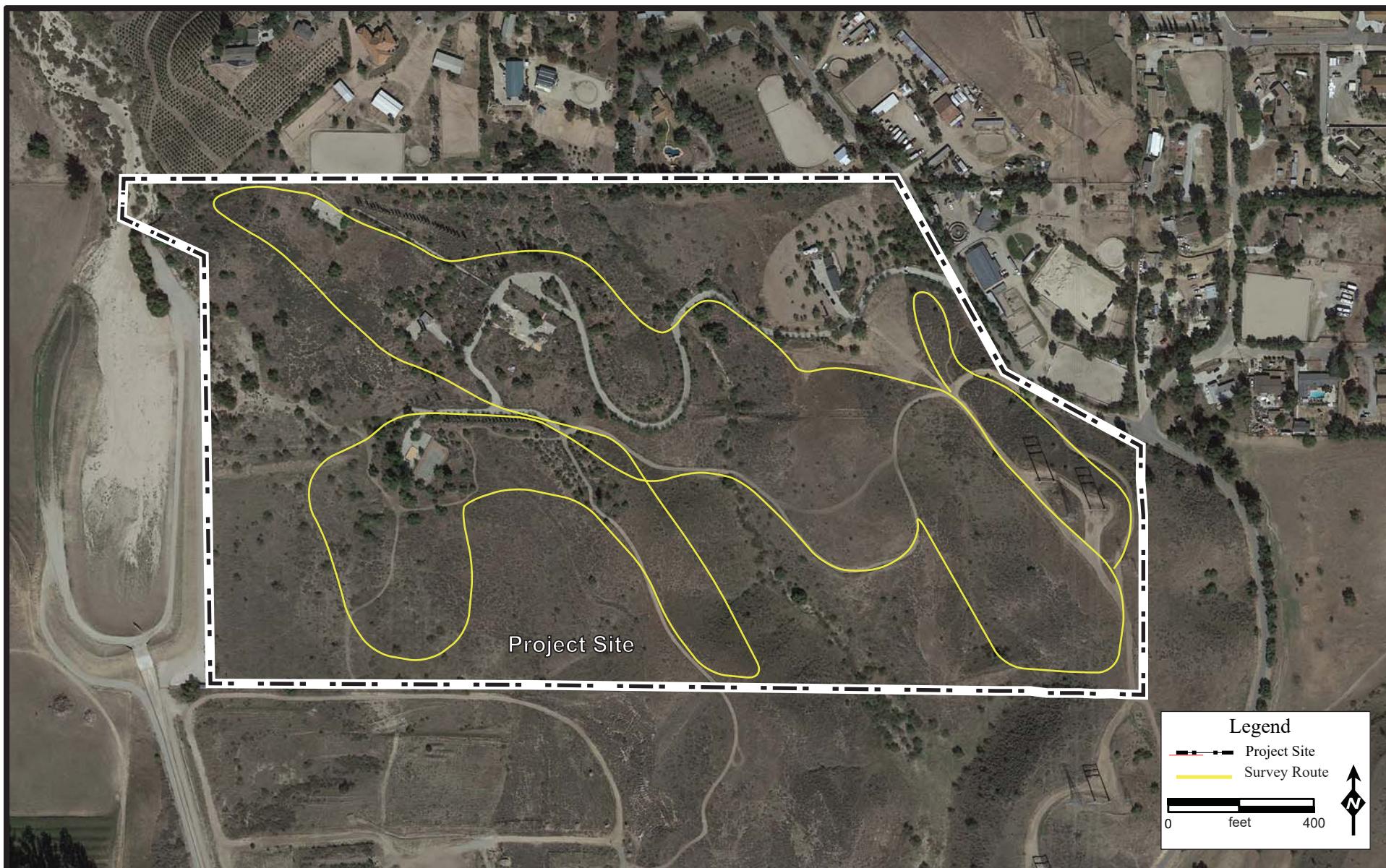
Project No: ENV-01-22

Project Site

Source: USGS 7.5 Minute Quadrangle
Moorpark

FIGURE

1



TW Biological Services

MOORPARK 67/NORTH RANCH
RESIDENTIAL DEVELOPMENT PROJECT
CALIFORNIA GNATCATCHER SURVEY

Project No: ENV-01-22

Aerial Photograph of Project Site and Survey Route

Aerial Source: Google Earth Pro May 2022

FIGURE

2



Aerial Source: Valtus Imagery Services: Hexagon Imagery Program (HxIP), 2020.

Legend

- Property Boundary
- Fuel Modification Zone (100-Ft.)

 Grading Footprint

Ec California Brittle Bush Scrub
(*Encelia californica*)

Ac California Sagebrush Scrub
(*Artemisia californica*)

RG Ruderal Grassland

L Landscaping

RCL Ruderal Grassland with CSS and Landscaping

CR CSS with Ruderal Grassland

RC Ruderal Grassland with CSS

Bs Mulefat Scrub (*Baccharis salicifolia*)

Ls Scalebroom Scrub
(*Lepidospartum squamatum*)

D Developed

Special-Status Plant Species

● White rabbit-tabacco
(*Pseudognaphalium leucocephalum*)
[CRPR 2B.2]