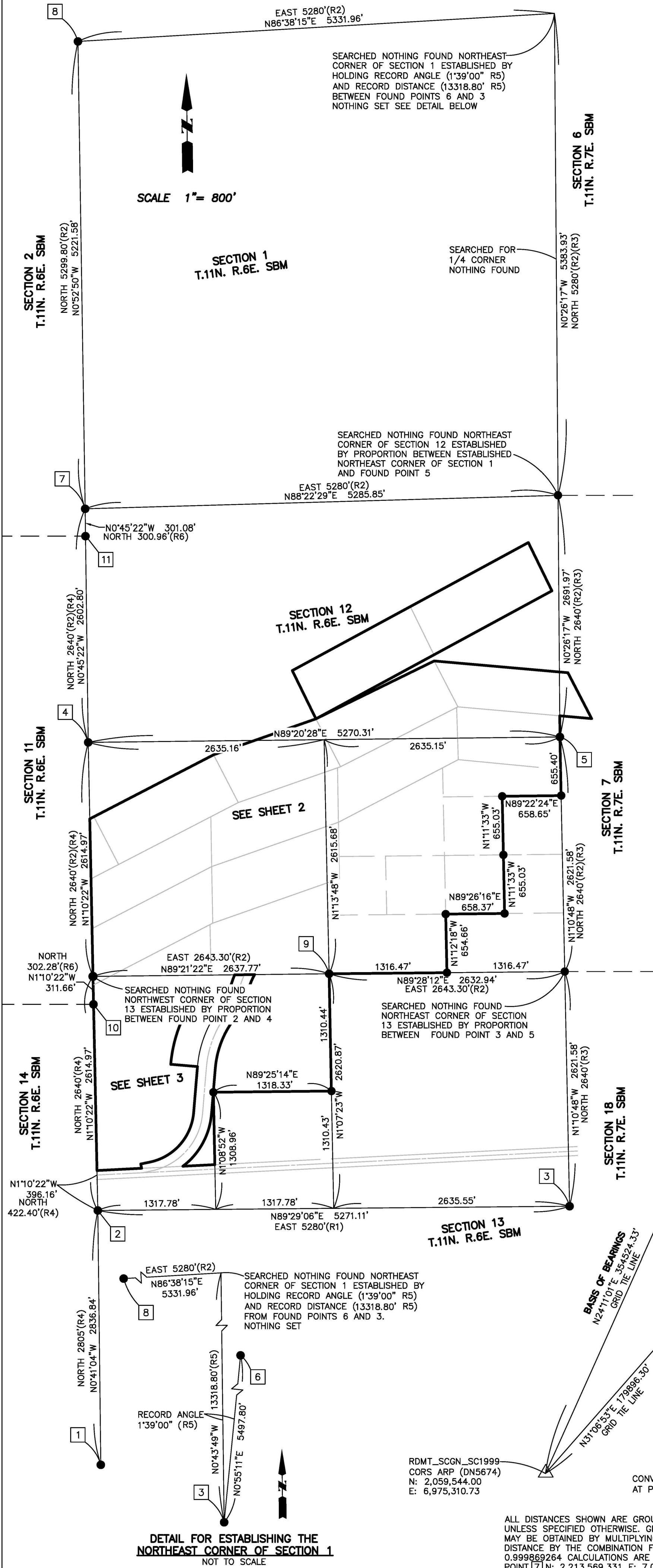


IN THE UNINCORPORATED TERRITORY OF SAN BERNARDINO COUNTY, STATE OF CALIFORNIA

RECORD OF SURVEY 21-XXXX

BEING A PORTION OF SECTIONS 12 AND 13 TOWNSHIP 11 NORTH, RANGE 6 EAST AND A PORTION OF SECTION 7 TOWNSHIP 11 NORTH, RANGE 7 EAST, SAN BERNARDINO MERIDIAN IN THE COUNTY OF SAN BERNARDINO, STATE OF CALIFORNIA.

SHEET 1 OF 3 SHEETS



SURVEYOR'S NOTES:

- (R1) - RECORD DATA ACCORDING TO THE UNITED STATES BUREAU OF LAND MANAGEMENT FIELD NOTES VOLUME R 154-9
- (R2) - RECORD DATA ACCORDING TO THE UNITED STATES BUREAU OF LAND MANAGEMENT FIELD NOTES VOLUME R 154-8
- (R3) - RECORD DATA ACCORDING TO THE UNITED STATES BUREAU OF LAND MANAGEMENT FIELD NOTES VOLUME R 226-3
- (R4) - RECORD DATA ACCORDING TO THE UNITED STATES BUREAU OF LAND MANAGEMENT FIELD NOTES VOLUME R 430-22
- (R5) - RECORD DATA ACCORDING TO THE UNITED STATES BUREAU OF LAND MANAGEMENT FIELD NOTES VOLUME R 520-8
- (R6) - RECORD DATA ACCORDING TO THE UNITED STATES BUREAU OF LAND MANAGEMENT FIELD NOTES VOLUME R 430-16
- (R7) - RECORD DATA RECORD OF SURVEY FILED IN BOOK 51 PAGE 84 OF RECORDS OF SURVEYS
- (R8) - RECORD DATA MINERAL SURVEY NO. 4235 SURVEYED ON FEBRUARY 1904
- (R9) - RECORD DATA MINERAL SURVEY NO. 4238 SURVEYED ON FEBRUARY 1904
- (R10) - RECORD DATA MINERAL SURVEY NO. 4239 SURVEYED ON FEBRUARY 1904
- (R11) - RECORD DATA MINERAL SURVEY NO. 4240 SURVEYED ON FEBRUARY 1904
- (R12) - RECORD DATA MINERAL SURVEY NO. 4241 SURVEYED ON FEBRUARY 1904
- (R13) - RECORD DATA MINERAL SURVEY NO. 4604 SURVEYED ON APRIL 1907
- (R14) - RECORD DATA MINERAL SURVEY NO. 6805 SURVEYED ON JANUARY 1972
- (R15) - RECORD DATA MINERAL SURVEY NO. 4239 SURVEYED ON OCTOBER 1976
- (R16) - RECORD DATA DEED RECORDED IN BOOK 541 OF DEEDS, PAGE 123 OFFICIAL RECORDS
- (R17) - RECORD DATA RIGHT OF WAY AND TRACK MAP LOS ANGELES & SALT LAKE R.R. CO. SECOND SUB DIV. "V8-11 AS SHOWN ON COUNTY SURVEY MAP 3183.
- - SET 2"x18" I.P. W/TAG L.S. 8422 FLUSH UNLESS OTHERWISE NOTED.

NOTE:
SEE SHEET 2 FOR FOUND MONUMENT NOTES

SURVEYOR'S STATEMENT

THIS MAP CORRECTLY REPRESENTS A SURVEY MADE BY ME OR UNDER MY DIRECTION IN CONFORMANCE WITH THE REQUIREMENTS OF THE PROFESSIONAL LAND SURVEYORS' ACT, AT THE REQUEST OF CALIFORNIA PORTLAND CEMENT COMPANY 2021.

DATE 10/28/2021

[Signature]

RICHARD S FURLONG, P.L.S. 8422



COUNTY SURVEYOR'S STATEMENT

THIS MAP HAS BEEN EXAMINED IN ACCORDANCE WITH SECTION 8766 OF THE PROFESSIONAL LAND SURVEYORS' ACT THIS _____ DAY OF _____, 2021.

THOMAS P. HERRIN
COUNTY SURVEYOR
COUNTY OF SAN BERNARDINO

BY: _____ DEPUTY
L.S. NO. _____

RECORD OF SURVEY WAS SUBMITTED FOR REVIEW TO THE COUNTY OF SAN BERNARDINO ON 5/28/2021

LEGEND:

- "CC" = CLOSING CORNER
- M.S. = MINERAL SURVEY
- S.F.N. = SEARCHED AND FOUND NOTHING
- U.S.L.M. = UNITED STATES LOCATION MONUMENT

BASIS OF BEARINGS

CALIFORNIA STATE PLANE COORDINATE SYSTEM, ZONE 5 TAKEN BETWEEN NATIONAL GEODETIC SURVEY CONTROL CORRS REFERENCE STATION DESIGNATION "RDMT_SCGN_CS1999 CORRS ARP" PID "DN5674" AND "SILURIANHICS2008 CORRS ARP" PID "DN7449"

BEING N24°11'01"E NAD 83 EPOCH 2010

SILURIANHICS CORRS ARP
(DN7449)
N: 2,382,964.67
E: 7,120,545.16

8 N: 2,218,790.298
E: 7,068,192.627

7 N: 2,213,569.331
E: 7,068,272.860

NOTE

THE PURPOSE OF THE REQUESTED SURVEY IS TO MONUMENT THE OVERALL PERIMETER OF THE PROPERTIES OWNED BY CALIFORNIA PORTLAND CEMENT COMPANY,

SAN BERNARDINO COUNTY RECORDER'S CERTIFICATE:

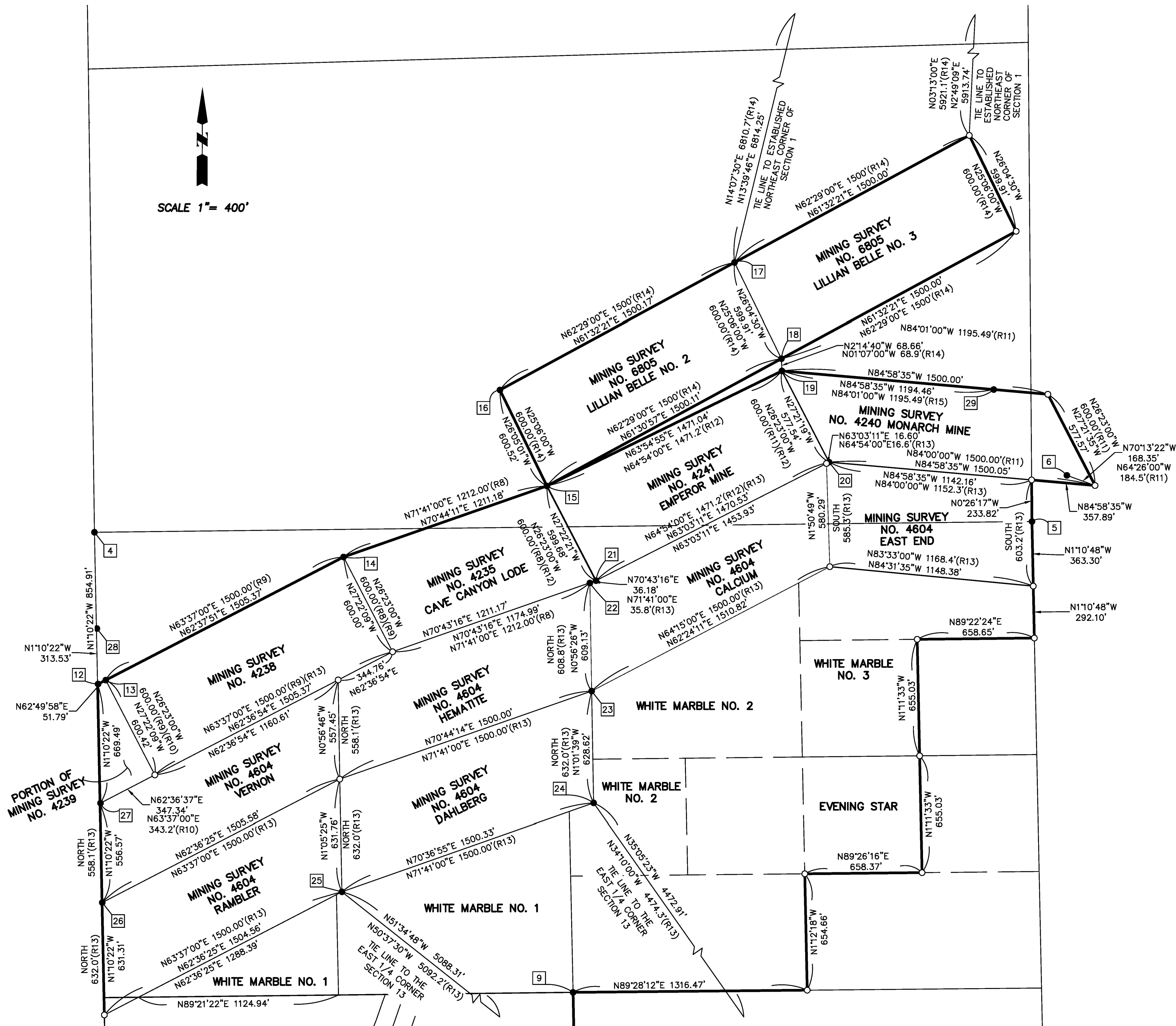
THIS MAP HAS BEEN FILED UNDER DOCUMENT NUMBER _____, THIS _____ DAY OF _____, 20____, AT _____ M. IN BOOK _____ OF RECORDS OF SURVEY AT PAGE _____ AT THE REQUEST OF _____ IN THE AMOUNT OF \$_____.

BOB DUTTON
ASSESSOR-RECORDER
COUNTY OF SAN BERNARDINO

BY: _____
DEPUTY RECORDER

RECORD OF SURVEY 21-XXXX

BEING A PORTION OF SECTIONS 12 AND 13 TOWNSHIP 11 NORTH, RANGE 6 EAST AND A PORTION OF SECTION 7 TOWNSHIP 11 NORTH, RANGE 7 EAST, SAN BERNARDINO MERIDIAN IN THE COUNTY OF SAN BERNARDINO, STATE OF CALIFORNIA.

**FOUND MONUMENT NOTES:**

SHEET 2 OF 3 SHEETS

- [1] FD. LAVA ROCK UP 1' 3 NOTCHES ON SLY CORNER, 1 NOTCH ON ELY CORNER 3' EAST OF MOUND OF ROCKS 4' BASE AND 3' TALL ACCEPTED AS THE SOUTHWEST CORNER OF SECTION 13 PER (R4)
- [2] FD. 8" GRANITE STONE MARKED 1/4 ON WLY FACE FLUSH WITH MOUND OF STONES ON WLY SIDE ACCEPTED AS THE WEST 1/4 CORNER OF SECTION 13 PER (R1)
- [3] FD. 3 1/4" BRASS CAP STAMPED BUREAU OF LAND MANAGEMENT STAMPED 1/4 S13/S18 1955 ACCEPTED AS THE EAST 1/4 CORNER OF SECTION 13 PER (R5)
- [4] FD. GRANITE STONE 1/4 NOTCHED IN ELY FACE IN A MOUND OF STONES 2 BASE 1.5' TALL ACCEPTED AS THE WEST 1/4 CORNER OF SECTION 12 (R4) SEARCHED FOR 2" I.P. (R7) BRASS CAP NOT FOUND
- [5] FD. NAIL IN DIRT IN THE CENTER OF A MOUND OF ROCKS 3' BASE WITH 2' TALL LATH ACCEPTED AS THE EAST 1/4 CORNER OF SECTION 12 (R2)
- [6] FD. NAIL AND TAG L.S. 4813 IN TOP OF ROCK ON TOP OF NORTH EDGE OF KNOLL MOUND OF STONES DESTROYED ACCEPTED AS U.S.L.M. NO. 109 PER (R6)(R7)
- [7] FD. GRANITE STONE WITH 5 NOTCHES ON SLY SIDE AND 1 NOTCH ON NLY SIDE REBUILT STONE MOUND 3' BASE 2' TALL ACCEPTED AS THE NORTHWEST CORNER OF SECTION 12
- [8] FD. 3 1/4" BRASS CAP STAMPED BUREAU OF LAND MANAGEMENT S35/S36 T12N R6E S2/S1 T11N 1955 UP 0.6' ACCEPTED AS THE NORTHWEST CORNER OF SECTION 1 PER (R5)
- [9] FD. GRANITE STONE WITH 1/4 CHISELED ON NLY FACE WITH MOUND 5' BASE 1' TALL IN LIEU OF CHARRED POST PER (R2) ACCEPTED AS THE NORTH 1/4 CORNER OF SECTION 13
- [10] FD. GRANITE STONE UP 0.8' "CC" CHISELED ON WLY SIDE 4 NOTCHES ON SLY SIDE, 2 NOTCHES ON NLY SIDE ACCEPTED AS THE CLOSING CORNER OF SECTION 14 PER (R6)
- [11] FD. GRANITE STONE UP 0.9' "CC" CHISELED ON WLY SIDE 5 NOTCHES ON SLY SIDE, 1 NOTCH ON NLY SIDE ACCEPTED AS THE CLOSING CORNER OF SECTION 2 AND 11 PER (R6)
- [12] FD. 1 3/4" I.P. NAIL AND TAG L.S. 4813 UP 0.7" ACCEPTED AS THE SOUTHWEST CORNER OF CAVE CANYON MILLSITE NO. 1 PER (R7)
- [13] FD. 1 1/2" I.P. NAIL AND TAG L.S. 4813 FLUSH IN LIEU OF 1 3/4" I.P. ACCEPTED AS THE NORTHWEST CORNER OF CAVE CANYON MINE NO. 1 (M.S. 4238) PER (R7)
- [14] FD. 1 1/2" I.P. NAIL AND TAG L.S. 4813 UP 0.8' IN LIEU OF 1 3/4" I.P. ACCEPTED AS THE NORTHEAST CORNER OF CAVE CANYON MINE NO. 1 (M.S. 4238) PER (R7)
- [15] FD. 4" SQUARE WOOD POST WITH NAIL AND TAG L.S. 4813 WITH TIN CAN ATTACHED TO THE NLY SIDE IN MOUND OF STONES, ACCEPTED AS THE NORTHEAST CORNER OF CAVE CANYON LODE (M.S. 4235) PER (R13)
- [16] FD. 4" SQUARE WOOD POST WITH METAL TAG ON SLY SIDE LABELED "NORTH WEST CORNER LILLIAN BELLE NO. IN MOUND OF STONES 4' BASE X 2.5' TALL 2" SET MAG NAIL ON TOP ACCEPTED AS THE NORTHWEST CORNER OF LILLIAN BELLE NO. 2 (M.S. 6805) PER (R13)
- [17] FD. 3" IRON CAP IN CENTER OF MOUND OF STONES 3.5' BASE X 2' TALL ACCEPTED AS THE NORTHWEST CORNER OF LILLIAN BELLE NO. 2 (M.S. 6805) PER (R13)
- [18] FD. 3" IRON CAP ON 1" I.P. IN CENTER OF MOUND OF STONES 3.5' BASE X 1' TALL ACCEPTED AS THE SOUTHEAST CORNER OF LILLIAN BELLE NO. 2 (M.S. 6805) PER (R13)
- [19] FD. 3" BRASS CAP NO STAMP ON 1" I.P. SET AGAINST NORTHEAST 4" SQUARE WOOD POST 2' TALL IN THE CENTER 3' BASE X 0.6' TALL ACCEPTED AS THE NORTHEAST CORNER OF EMPEROR MINE (M.S. 4241) PER (R12)
- [20] FD. 4" SQUARE WOOD POST NO MARKINGS IN CENTER OF MOUND OF STONES 4' BASE X 3' TALL ACCEPTED AS THE SOUTHEAST CORNER OF EMPEROR MINE (M.S. 4241) PER (R11)
- [21] FD. 4" SQUARE WOOD POST NO MARKINGS IN CENTER OF MOUND OF STONES 5' BASE X 4' TALL ACCEPTED AS THE SOUTHWEST CORNER OF EMPEROR MINE (M.S. 4241) PER (R13)
- [22] FD. 4" SQUARE WOOD POST NO MARKINGS IN CENTER OF MOUND OF STONES 5' BASE X 3' TALL SET MAG NAIL ACCEPTED AS THE NORTHEAST CORNER OF HEMATITE (M.S. 4604) PER (R13)
- [23] FD. 4" SQUARE WOOD POST NO MARKINGS IN CENTER OF MOUND OF STONES 5' BASE X 4' TALL SET MAG NAIL ACCEPTED AS THE SOUTHEAST CORNER OF HEMATITE (M.S. 4604) PER (R13)
- [24] FD. 4" SQUARE WOOD POST NO MARKINGS IN CENTER OF MOUND OF STONES 6' BASE X 4' TALL SET 60D SPIKE ON TOP ACCEPTED AS THE NORTHEAST CORNER OF DAHLBERG (M.S. 4604) PER (R13)
- [25] FD. 4" SQUARE WOOD POST WITH ILLEGIBLE MARKINGS IN CENTER OF MOUND OF STONES 6' BASE X 3' TALL SET C NAIL ON TOP ACCEPTED AS THE SOUTHWEST CORNER OF DAHLBERG (M.S. 4604) PER (R13)
- [26] FD. 4" SQUARE WOOD POST NO MARKINGS IN CENTER OF MOUND OF STONES 6' BASE X 4' TALL SET TACK ON TOP ACCEPTED AS THE SOUTHWEST CORNER OF VERNON (M.S. 4604) PER (R13)(R7)
- [27] FD. 4" SQUARE WOOD POST WITH NAIL AND TAG 4813 ON TOP IN CENTER OF MOUND OF STONES 6' BASE X 2.5' TALL SET TACK ON TOP ACCEPTED AS THE NORTHWEST CORNER OF VERNON (M.S. 4604) PER (R13)
- [28] FD. 1 3/4" I.P. NAIL AND TAG L.S. 4813 UP 0.7" ACCEPTED AS THE NORTHWEST CORNER OF CAVE CANYON MILLSITE NO. 1 PER (R7)
- [29] FD. 3" BRASS CAP NO ON 1" I.P. STAMPED SURVEY 6839 LBM NO. 2 SOUTHEAST CORNER IN THE CENTER OF MOUND OF STONES 3' BASE X 0.8' TALL ACCEPTED AS THE A POINT ON THE NORTH LINE OF MONARCH MINE (M.S. 4240) PER (R15)

NOTE:

SEE SHEET 1 FOR LEGEND, SURVEYOR'S NOTES

IN THE UNINCORPORATED TERRITORY OF SAN BERNARDINO COUNTY, STATE OF CALIFORNIA

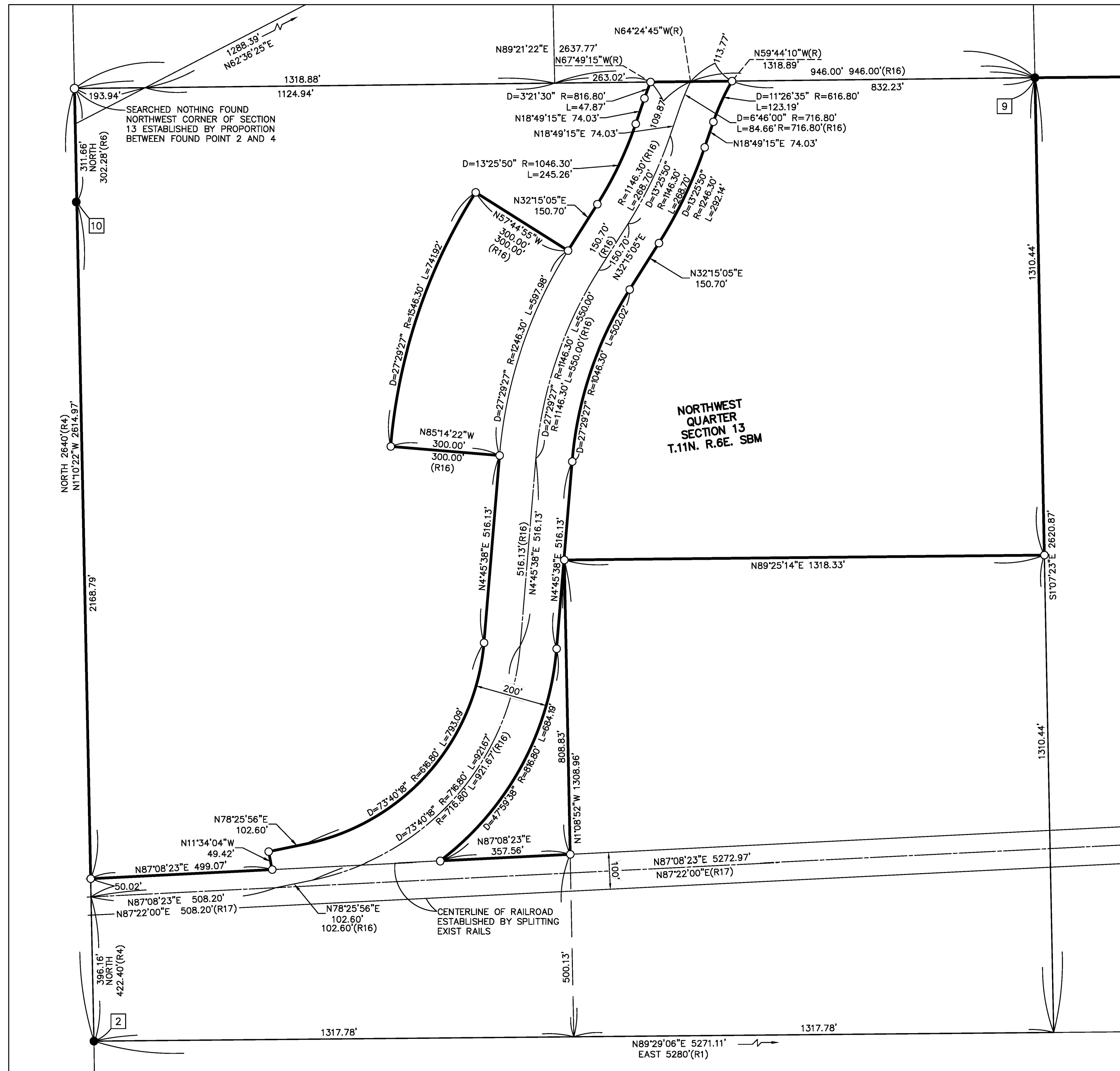
RECORD OF SURVEY 21-XXXX

BEING A PORTION OF SECTIONS 12 AND 13 TOWNSHIP 11 NORTH, RANGE 6 EAST AND A PORTION OF SECTION 7 TOWNSHIP 11 NORTH, RANGE 7 EAST, SAN BERNARDINO MERIDIAN IN THE COUNTY OF SAN BERNARDINO, STATE OF CALIFORNIA.

SHEET 3 OF 3 SHEETS



SCALE 1" = 200'



NOTE:
SEE SHEET 1 FOR LEGEND, SURVEYOR'S NOTES
SEE SHEET 2 FOR FOUND MONUMENT NOTES