

APPENDIX A
Notice of Preparation
and Comment Letters



CITY OF EASTVALE

Notice of Preparation of a Draft Environmental Impact Report

DATE: August 5, 2022
TO: Responsible and Trustee Agencies, Interested Parties and Organizations
SUBJECT: Notice of Preparation of a Draft Environmental Impact Report
PROJECT TITLE: Eastvale 2040 General Plan Update
PROJECT LOCATION: City of Eastvale

The City of Eastvale (City), as lead agency under the California Environmental Quality Act (CEQA), plans to prepare an Environmental Impact Report (EIR) pursuant to CEQA. In accordance with CEQA Guidelines Section 15082, the City is issuing the Notice of Preparation (NOP) to inform agencies and the public that an EIR will be prepared and to provide an opportunity for a meaningful response related to the scope and content of the EIR, including the potentially significant issues, reasonable project alternatives, and mitigation measures.

PROJECT LOCATION

Eastvale is located in northwestern Riverside County, California, within the Inland Empire region of Southern California. Its boundaries extend from Hellman Avenue to the west (the San Bernardino county line), Philadelphia Avenue to the north (also the San Bernardino county line), the Santa Ana River and the City of Norco to the south, and Interstate 15 to the east. This "Planning Area" includes all land within the city limits; refer to [Attachment 1](#).

PROJECT DESCRIPTION

California State law requires each city and county to adopt a comprehensive, long-term General Plan. The General Plan is the official policy statement of the City for use by the Council to guide private and public development in the City, as well as the City's own operations and decisions. State law requires that the City's ordinances regulating land use be consistent with the General Plan. The Zoning Code, individual project proposals, and other related plans and City ordinances must be consistent with the goals and policies in this General Plan.

The General Plan projects conditions and needs into the future as a basis for determining long-term objectives and policies and shorter-term decision making, budgeting and prioritization of implementation programs. The General Plan is considered "long-term" since it looks 20 years or further into the future. The City's current General Plan was adopted in 2012. As such, the City is undertaking the development of a new General Plan known as Eastvale 2040 to help guide future development and plan for future needs for services in the City.

The proposed project, Eastvale 2040, will update all the state-required elements, including Land Use, Circulation, Housing, Conservation, Open Space, Noise, and Safety. The Eastvale 2040 plan will also address urban design, environmental justice, economic development, public health, and sustainability. As a matter of information, on June 21, 2022 the State Department of Housing Community and Development found the Eastvale 2021-2029 Housing Element update consistent with State law.

A Draft Land Use Plan is included as [Attachment 1](#) of this NOP.

EIR SCOPE

An EIR will be prepared to assess the effects of the project on the environment, identify potentially significant impacts, identify feasible mitigation measures to reduce or eliminate potentially significant environmental impacts, and discuss potentially feasible alternatives to the project that may accomplish basic project objectives while lessening or eliminating any potentially significant impacts. The City has initially identified the following environmental issue areas to be evaluated in the EIR:

- Aesthetics
- Air Quality
- Agriculture and Forestry
- Biological Resources

**CITY OF EASTVALE
NOTICE OF PREPARATION**

- Cultural Resources
- Energy
- Geology and Soils
- Greenhouse Gas Emissions
- Hazards and Hazardous Materials
- Hydrology and Water Quality
- Land Use and Planning
- Noise
- Public Services
- Transportation
- Tribal Cultural Resources
- Utilities
- Wildfire

OPPORTUNITY FOR PUBLIC REVIEW AND COMMENT

The City is requesting comments as to the scope and content of the EIR. Please provide your comments in writing **before 5:00 p.m. on September 6, 2022** to:

Mr. Gustavo N. Gonzalez, Planning Manager
City of Eastvale
Community Development Department
12363 Limonite Ave. Suite 910
Eastvale, CA 91752
Phone: (951) 703-4499
Email: ggonzalez@eastvaleca.gov

PUBLIC SCOPING MEETING

Consistent with Section 21083.9 of the CEQA statute, the City of Eastvale Community Development Department will conduct a scoping meeting to solicit input and comments from the general public and public agencies as to the content and scope of the Draft EIR on **Tuesday, August 16, 2022 at 6:00 p.m.** at Vantage Point Church (8500 Archibald Avenue, Eastvale, CA 92880).



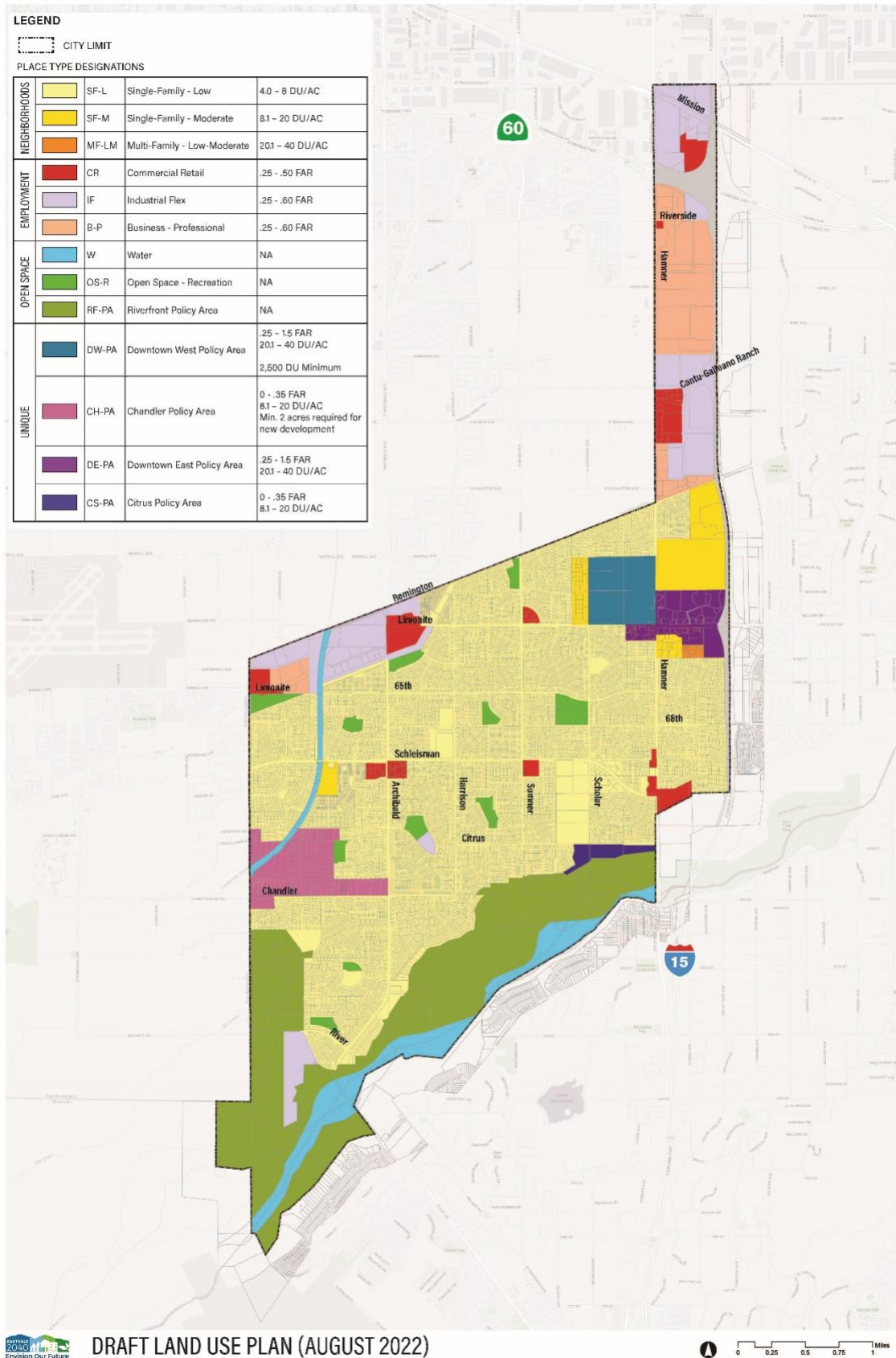
Ms. Gina Gibson-Williams
Community Development/Public Works Director
City of Eastvale, Community Development Department

August 3, 2022

Date

CITY OF EASTVALE NOTICE OF PREPARATION

Attachment 1, Draft Land Use Plan



From: [Christina Marsden Conley](#)
To: [intern2](#)
Cc: [Gustavo Gonzalez](#); [Robert Dorame](#)
Subject: Re: Eastvale 2040 General Plan Update
Date: Tuesday, August 2, 2022 11:37:34 AM
Attachments: [image001.png](#)
[Eastvale 2040 General Plan Update.pdf](#)

[The e-mail below is from an external source. Please do not open attachments or click links from an unknown or suspicious origin.]

Good morning,
We have no comment and will defer to our sister tribes.

Christina Conley
626.407.8761
Native American Cultural Resource Monitor
Gabrielino Tongva Indians of California

****I am presently on a field site with limited communication- please excuse any typos****

On Aug 2, 2022, at 9:48 AM, intern2 <intern2@eastvaleca.gov> wrote:

Hi Christina,

Please find attached a request for tribal consultation related to the Eastvale 2040 General Plan Update project.

Regards,



Elijah Harding | City Intern
CITY OF EASTVALE | T: 951.703.4407
12363 Limonite Avenue | Suite 910 | Eastvale, CA 91752
intern2@eastvaleca.gov | eastvaleca.gov

Connect with us on social media:

[Facebook](#) | [Twitter](#) | [Instagram](#) | [LinkedIn](#) | [YouTube](#)

We champion experiences that *engage*, *excite*, and *elevate* our comm**UNITY**! With our..

Kindness – *selfless concern for all*

Grit – *passion and resilience in everything we do*

Solutions-Driven – *courageous, creative, and collaborative results*



NATIVE AMERICAN HERITAGE COMMISSION

August 5, 2022

Gustavo N. Gonzalez
City of Eastvale
12363 Limonite Ave., Suite 910
Eastvale, CA 91752

Re: 2022080090, Eastvale 2040 General Plan Update Project, Riverside County

Dear Mr. Gonzalez:

The Native American Heritage Commission (NAHC) has received the Notice of Preparation (NOP), Draft Environmental Impact Report (DEIR) or Early Consultation for the project referenced above. The California Environmental Quality Act (CEQA) (Pub. Resources Code §21000 et seq.), specifically Public Resources Code §21084.1, states that a project that may cause a substantial adverse change in the significance of a historical resource, is a project that may have a significant effect on the environment. (Pub. Resources Code § 21084.1; Cal. Code Regs., tit. 14, § 15064.5 (b) (CEQA Guidelines § 15064.5 (b)). If there is substantial evidence, in light of the whole record before a lead agency, that a project may have a significant effect on the environment, an Environmental Impact Report (EIR) shall be prepared. (Pub. Resources Code §21080 (d); Cal. Code Regs., tit. 14, § 5064 subd.(a)(1) (CEQA Guidelines § 15064 (a)(1)). In order to determine whether a project will cause a substantial adverse change in the significance of a historical resource, a lead agency will need to determine whether there are historical resources within the area of potential effect (APE).

CEQA was amended significantly in 2014. Assembly Bill 52 (Gatto, Chapter 532, Statutes of 2014) (AB 52) amended CEQA to create a separate category of cultural resources, "tribal cultural resources" (Pub. Resources Code §21074) and provides that a project with an effect that may cause a substantial adverse change in the significance of a tribal cultural resource is a project that may have a significant effect on the environment. (Pub. Resources Code §21084.2). Public agencies shall, when feasible, avoid damaging effects to any tribal cultural resource. (Pub. Resources Code §21084.3 (a)). **AB 52 applies to any project for which a notice of preparation, a notice of negative declaration, or a mitigated negative declaration is filed on or after July 1, 2015.** If your project involves the adoption of or amendment to a general plan or a specific plan, or the designation or proposed designation of open space, on or after March 1, 2005, it may also be subject to Senate Bill 18 (Burton, Chapter 905, Statutes of 2004) (SB 18). **Both SB 18 and AB 52 have tribal consultation requirements.** If your project is also subject to the federal National Environmental Policy Act (42 U.S.C. § 4321 et seq.) (NEPA), the tribal consultation requirements of Section 106 of the National Historic Preservation Act of 1966 (154 U.S.C. 300101, 36 C.F.R. §800 et seq.) may also apply.

The NAHC recommends consultation with California Native American tribes that are traditionally and culturally affiliated with the geographic area of your proposed project as early as possible in order to avoid inadvertent discoveries of Native American human remains and best protect tribal cultural resources. Below is a brief summary of portions of AB 52 and SB 18 as well as the NAHC's recommendations for conducting cultural resources assessments.

Consult your legal counsel about compliance with AB 52 and SB 18 as well as compliance with any other applicable laws.

CHAIRPERSON
Laura Miranda
Luiseño

VICE CHAIRPERSON
Reginald Pagaling
Chumash

PARLIAMENTARIAN
Russell Attebery
Karuk

SECRETARY
Sara Dutschke
Miwok

COMMISSIONER
William Mungary
Paiute/White Mountain
Apache

COMMISSIONER
Isaac Bojorquez
Ohlone-Costanoan

COMMISSIONER
Buffy McQuillen
Yokayo Pomo, Yuki,
Nomlaki

COMMISSIONER
Wayne Nelson
Luiseño

COMMISSIONER
Stanley Rodriguez
Kumeyaay

EXECUTIVE SECRETARY
Raymond C. Hitchcock
Miwok/Nisenan

NAHC HEADQUARTERS
1550 Harbor Boulevard
Suite 100
West Sacramento,
California 95691
(916) 373-3710
nahc@nahc.ca.gov
NAHC.ca.gov

AB 52

AB 52 has added to CEQA the additional requirements listed below, along with many other requirements:

1. Fourteen Day Period to Provide Notice of Completion of an Application/Decision to Undertake a Project: Within fourteen (14) days of determining that an application for a project is complete or of a decision by a public agency to undertake a project, a lead agency shall provide formal notification to a designated contact of, or tribal representative of, traditionally and culturally affiliated California Native American tribes that have requested notice, to be accomplished by at least one written notice that includes:
 - a. A brief description of the project.
 - b. The lead agency contact information.
 - c. Notification that the California Native American tribe has 30 days to request consultation. (Pub. Resources Code §21080.3.1 (d)).
 - d. A "California Native American tribe" is defined as a Native American tribe located in California that is on the contact list maintained by the NAHC for the purposes of Chapter 905 of Statutes of 2004 (SB 18). (Pub. Resources Code §21073).
2. Begin Consultation Within 30 Days of Receiving a Tribe's Request for Consultation and Before Releasing a Negative Declaration, Mitigated Negative Declaration, or Environmental Impact Report: A lead agency shall begin the consultation process within 30 days of receiving a request for consultation from a California Native American tribe that is traditionally and culturally affiliated with the geographic area of the proposed project. (Pub. Resources Code §21080.3.1, subds. (d) and (e) and prior to the release of a negative declaration, mitigated negative declaration or Environmental Impact Report. (Pub. Resources Code §21080.3.1 (b)).
 - a. For purposes of AB 52, "consultation shall have the same meaning as provided in Gov. Code §65352.4 (SB 18). (Pub. Resources Code §21080.3.1 (b)).
3. Mandatory Topics of Consultation If Requested by a Tribe: The following topics of consultation, if a tribe requests to discuss them, are mandatory topics of consultation:
 - a. Alternatives to the project.
 - b. Recommended mitigation measures.
 - c. Significant effects. (Pub. Resources Code §21080.3.2 (a)).
4. Discretionary Topics of Consultation: The following topics are discretionary topics of consultation:
 - a. Type of environmental review necessary.
 - b. Significance of the tribal cultural resources.
 - c. Significance of the project's impacts on tribal cultural resources.
 - d. If necessary, project alternatives or appropriate measures for preservation or mitigation that the tribe may recommend to the lead agency. (Pub. Resources Code §21080.3.2 (a)).
5. Confidentiality of Information Submitted by a Tribe During the Environmental Review Process: With some exceptions, any information, including but not limited to, the location, description, and use of tribal cultural resources submitted by a California Native American tribe during the environmental review process shall not be included in the environmental document or otherwise disclosed by the lead agency or any other public agency to the public, consistent with Government Code §6254 (r) and §6254.10. Any information submitted by a California Native American tribe during the consultation or environmental review process shall be published in a confidential appendix to the environmental document unless the tribe that provided the information consents, in writing, to the disclosure of some or all of the information to the public. (Pub. Resources Code §21082.3 (c)(1)).
6. Discussion of Impacts to Tribal Cultural Resources in the Environmental Document: If a project may have a significant impact on a tribal cultural resource, the lead agency's environmental document shall discuss both of the following:
 - a. Whether the proposed project has a significant impact on an identified tribal cultural resource.
 - b. Whether feasible alternatives or mitigation measures, including those measures that may be agreed to pursuant to Public Resources Code §21082.3, subdivision (a), avoid or substantially lessen the impact on the identified tribal cultural resource. (Pub. Resources Code §21082.3 (b)).

7. Conclusion of Consultation: Consultation with a tribe shall be considered concluded when either of the following occurs:

- a. The parties agree to measures to mitigate or avoid a significant effect, if a significant effect exists, on a tribal cultural resource; or
- b. A party, acting in good faith and after reasonable effort, concludes that mutual agreement cannot be reached. (Pub. Resources Code §21080.3.2 (b)).

8. Recommending Mitigation Measures Agreed Upon in Consultation in the Environmental Document: Any mitigation measures agreed upon in the consultation conducted pursuant to Public Resources Code §21080.3.2 shall be recommended for inclusion in the environmental document and in an adopted mitigation monitoring and reporting program, if determined to avoid or lessen the impact pursuant to Public Resources Code §21082.3, subdivision (b), paragraph 2, and shall be fully enforceable. (Pub. Resources Code §21082.3 (a)).

9. Required Consideration of Feasible Mitigation: If mitigation measures recommended by the staff of the lead agency as a result of the consultation process are not included in the environmental document or if there are no agreed upon mitigation measures at the conclusion of consultation, or if consultation does not occur, and if substantial evidence demonstrates that a project will cause a significant effect to a tribal cultural resource, the lead agency shall consider feasible mitigation pursuant to Public Resources Code §21084.3 (b). (Pub. Resources Code §21082.3 (e)).

10. Examples of Mitigation Measures That, If Feasible, May Be Considered to Avoid or Minimize Significant Adverse Impacts to Tribal Cultural Resources:

- a. Avoidance and preservation of the resources in place, including, but not limited to:
 - i. Planning and construction to avoid the resources and protect the cultural and natural context.
 - ii. Planning greenspace, parks, or other open space, to incorporate the resources with culturally appropriate protection and management criteria.
- b. Treating the resource with culturally appropriate dignity, taking into account the tribal cultural values and meaning of the resource, including, but not limited to, the following:
 - i. Protecting the cultural character and integrity of the resource.
 - ii. Protecting the traditional use of the resource.
 - iii. Protecting the confidentiality of the resource.
- c. Permanent conservation easements or other interests in real property, with culturally appropriate management criteria for the purposes of preserving or utilizing the resources or places.
- d. Protecting the resource. (Pub. Resource Code §21084.3 (b)).
- e. Please note that a federally recognized California Native American tribe or a non-federally recognized California Native American tribe that is on the contact list maintained by the NAHC to protect a California prehistoric, archaeological, cultural, spiritual, or ceremonial place may acquire and hold conservation easements if the conservation easement is voluntarily conveyed. (Civ. Code §815.3 (c)).
- f. Please note that it is the policy of the state that Native American remains and associated grave artifacts shall be repatriated. (Pub. Resources Code §5097.991).

11. Prerequisites for Certifying an Environmental Impact Report or Adopting a Mitigated Negative Declaration or Negative Declaration with a Significant Impact on an Identified Tribal Cultural Resource: An Environmental Impact Report may not be certified, nor may a mitigated negative declaration or a negative declaration be adopted unless one of the following occurs:

- a. The consultation process between the tribes and the lead agency has occurred as provided in Public Resources Code §21080.3.1 and §21080.3.2 and concluded pursuant to Public Resources Code §21080.3.2.
- b. The tribe that requested consultation failed to provide comments to the lead agency or otherwise failed to engage in the consultation process.
- c. The lead agency provided notice of the project to the tribe in compliance with Public Resources Code §21080.3.1 (d) and the tribe failed to request consultation within 30 days. (Pub. Resources Code §21082.3 (d)).

The NAHC's PowerPoint presentation titled, "Tribal Consultation Under AB 52: Requirements and Best Practices" may be found online at: http://nahc.ca.gov/wp-content/uploads/2015/10/AB52TribalConsultation_CalEPAPDF.pdf

SB 18

SB 18 applies to local governments and requires local governments to contact, provide notice to, refer plans to, and consult with tribes prior to the adoption or amendment of a general plan or a specific plan, or the designation of open space. (Gov. Code §65352.3). Local governments should consult the Governor's Office of Planning and Research's "Tribal Consultation Guidelines," which can be found online at: https://www.opr.ca.gov/docs/09_14_05_Updated_Guidelines_922.pdf.

Some of SB 18's provisions include:

1. **Tribal Consultation:** If a local government considers a proposal to adopt or amend a general plan or a specific plan, or to designate open space it is required to contact the appropriate tribes identified by the NAHC by requesting a "Tribal Consultation List." If a tribe, once contacted, requests consultation the local government must consult with the tribe on the plan proposal. **A tribe has 90 days from the date of receipt of notification to request consultation unless a shorter timeframe has been agreed to by the tribe.** (Gov. Code §65352.3 (a)(2)).
2. **No Statutory Time Limit on SB 18 Tribal Consultation.** There is no statutory time limit on SB 18 tribal consultation.
3. **Confidentiality:** Consistent with the guidelines developed and adopted by the Office of Planning and Research pursuant to Gov. Code §65040.2, the city or county shall protect the confidentiality of the information concerning the specific identity, location, character, and use of places, features and objects described in Public Resources Code §5097.9 and §5097.993 that are within the city's or county's jurisdiction. (Gov. Code §65352.3 (b)).
4. **Conclusion of SB 18 Tribal Consultation:** Consultation should be concluded at the point in which:
 - a. The parties to the consultation come to a mutual agreement concerning the appropriate measures for preservation or mitigation; or
 - b. Either the local government or the tribe, acting in good faith and after reasonable effort, concludes that mutual agreement cannot be reached concerning the appropriate measures of preservation or mitigation. (Tribal Consultation Guidelines, Governor's Office of Planning and Research (2005) at p. 18).

Agencies should be aware that neither AB 52 nor SB 18 precludes agencies from initiating tribal consultation with tribes that are traditionally and culturally affiliated with their jurisdictions before the timeframes provided in AB 52 and SB 18. For that reason, we urge you to continue to request Native American Tribal Contact Lists and "Sacred Lands File" searches from the NAHC. The request forms can be found online at: <http://nahc.ca.gov/resources/forms/>.

NAHC Recommendations for Cultural Resources Assessments

To adequately assess the existence and significance of tribal cultural resources and plan for avoidance, preservation in place, or barring both, mitigation of project-related impacts to tribal cultural resources, the NAHC recommends the following actions:

1. Contact the appropriate regional California Historical Research Information System (CHRIS) Center (https://ohp.parks.ca.gov/?page_id=30331) for an archaeological records search. The records search will determine:
 - a. If part or all of the APE has been previously surveyed for cultural resources.
 - b. If any known cultural resources have already been recorded on or adjacent to the APE.
 - c. If the probability is low, moderate, or high that cultural resources are located in the APE.
 - d. If a survey is required to determine whether previously unrecorded cultural resources are present.
2. If an archaeological inventory survey is required, the final stage is the preparation of a professional report detailing the findings and recommendations of the records search and field survey.
 - a. The final report containing site forms, site significance, and mitigation measures should be submitted immediately to the planning department. All information regarding site locations, Native American human remains, and associated funerary objects should be in a separate confidential addendum and not be made available for public disclosure.
 - b. The final written report should be submitted within 3 months after work has been completed to the appropriate regional CHRIS center.

3. Contact the NAHC for:
 - a. A Sacred Lands File search. Remember that tribes do not always record their sacred sites in the Sacred Lands File, nor are they required to do so. A Sacred Lands File search is not a substitute for consultation with tribes that are traditionally and culturally affiliated with the geographic area of the project's APE.
 - b. A Native American Tribal Consultation List of appropriate tribes for consultation concerning the project site and to assist in planning for avoidance, preservation in place, or, failing both, mitigation measures.
4. Remember that the lack of surface evidence of archaeological resources (including tribal cultural resources) does not preclude their subsurface existence.
 - a. Lead agencies should include in their mitigation and monitoring reporting program plan provisions for the identification and evaluation of inadvertently discovered archaeological resources per Cal. Code Regs., tit. 14, § 15064.5(f) (CEQA Guidelines § 15064.5(f)). In areas of identified archaeological sensitivity, a certified archaeologist and a culturally affiliated Native American with knowledge of cultural resources should monitor all ground-disturbing activities.
 - b. Lead agencies should include in their mitigation and monitoring reporting program plans provisions for the disposition of recovered cultural items that are not burial associated in consultation with culturally affiliated Native Americans.
 - c. Lead agencies should include in their mitigation and monitoring reporting program plans provisions for the treatment and disposition of inadvertently discovered Native American human remains. Health and Safety Code § 7050.5, Public Resources Code § 5097.98, and Cal. Code Regs., tit. 14, § 15064.5, subdivisions (d) and (e) (CEQA Guidelines § 15064.5, subds. (d) and (e)) address the processes to be followed in the event of an inadvertent discovery of any Native American human remains and associated grave goods in a location other than a dedicated cemetery.

If you have any questions or need additional information, please contact me at my email address:
Andrew.Green@nahc.ca.gov.

Sincerely,

Andrew Green

Andrew Green
Cultural Resources Analyst

cc: State Clearinghouse



South Coast Air Quality Management District

21865 Copley Drive, Diamond Bar, CA 91765-4178
(909) 396-2000 • www.aqmd.gov

SENT VIA E-MAIL:

August 12, 2022

ggonzalez@eastvaleca.gov

Gustavo N. Gonzalez, Planning Manager
City of Eastvale
Community Development Department
12363 Limonite Avenue, Suite 910
Eastvale, California 91752

Notice of Preparation of a Draft Environmental Impact Report for the Eastvale 2040 General Plan Update] (Proposed Project)

South Coast Air Quality Management District (South Coast AQMD) staff appreciates the opportunity to comment on the above-mentioned document. Our comments are recommendations on the analysis of potential air quality impacts from the Proposed Project that should be included in the Draft Environmental Impact Report (EIR). Please send a copy of the Draft EIR upon its completion and public release directly to South Coast AQMD as copies of the Draft EIR submitted to the State Clearinghouse are not forwarded. **In addition, please send all appendices and technical documents related to the air quality, health risk, and greenhouse gas analyses and electronic versions of all emission calculation spreadsheets, and air quality modeling and health risk assessment input and output files (not PDF files). Any delays in providing all supporting documentation for our review will require additional review time beyond the end of the comment period.**

CEQA Air Quality Analysis

Staff recommends that the Lead Agency use South Coast AQMD's CEQA Air Quality Handbook and website¹ as guidance when preparing the air quality and greenhouse gas analyses. It is also recommended that the Lead Agency use the CalEEMod² land use emissions software, which can estimate pollutant emissions from typical land use development and is the only software model maintained by the California Air Pollution Control Officers Association.

South Coast AQMD has developed both regional and localized significance thresholds. South Coast AQMD staff recommends that the Lead Agency quantify criteria pollutant emissions and compare the emissions to South Coast AQMD's CEQA regional pollutant emissions significance thresholds³ and localized significance thresholds (LSTs)⁴ to determine the Proposed Project's air quality impacts. The localized analysis can be conducted by either using the LST screening tables or performing dispersion modeling.

The Lead Agency should identify any potential adverse air quality impacts that could occur from all phases of the Proposed Project and all air pollutant sources related to the Proposed Project. Air quality impacts from both construction (including demolition, if any) and operations should be calculated. Construction-related air quality impacts typically include, but are not limited to, emissions from the use of

¹ South Coast AQMD's CEQA Handbook and other resources for preparing air quality analyses can be found at: <http://www.aqmd.gov/home/rules-compliance/ceqa/air-quality-analysis-handbook>.

² CalEEMod is available free of charge at: www.caleemod.com.

³ South Coast AQMD's CEQA regional pollutant emissions significance thresholds can be found at: <http://www.aqmd.gov/docs/default-source/ceqa/handbook/scaqmd-air-quality-significance-thresholds.pdf>.

⁴ South Coast AQMD's guidance for performing a localized air quality analysis can be found at: <http://www.aqmd.gov/home/regulations/ceqa/air-quality-analysis-handbook/localized-significance-thresholds>.

heavy-duty equipment from grading, earth-loading/unloading, paving, architectural coatings, off-road mobile sources (e.g., heavy-duty construction equipment) and on-road mobile sources (e.g., construction worker vehicle trips, material transport trips, and hauling trips). Operation-related air quality impacts may include, but are not limited to, emissions from stationary sources (e.g., boilers and air pollution control devices), area sources (e.g., solvents and coatings), and vehicular trips (e.g., on- and off-road tailpipe emissions and entrained dust). Air quality impacts from indirect sources, such as sources that generate or attract vehicular trips, should be included in the analysis. Furthermore, emissions from the overlapping construction and operational activities should be combined and compared to South Coast AQMD's regional air quality CEQA *operational* thresholds to determine the level of significance.

Sensitive receptors are people that have an increased sensitivity to air pollution or environmental contaminants and include schools, daycare centers, nursing homes, elderly care facilities, hospitals, and residential dwelling units. The Proposed Project may include residential units located in close proximity to freeways or other sources of air pollution like railroad tracks, and to facilitate the purpose of an EIR as an informational document, it is recommended that the Lead Agency perform a mobile source health risk assessment⁵ to disclose the potential health risks⁵.

The California Air Resources Board's (CARB) *Air Quality and Land Use Handbook: A Community Health Perspective*⁶ is a general reference guide for evaluating and reducing air pollution impacts associated with new projects that go through the land use decision-making process with additional guidance on strategies to reduce air pollution exposure near high-volume roadways available in CARB's technical advisory⁷.

The South Coast AQMD's *Guidance Document for Addressing Air Quality Issues in General Plans and Local Planning*⁸ includes suggested policies that local governments can use in their General Plans or through local planning to prevent or reduce potential air pollution impacts and protect public health. It is recommended that the Lead Agency review this Guidance Document as a tool when making local planning and land use decisions.

Mitigation Measures

In the event that the Proposed Project results in significant adverse air quality impacts, CEQA requires that all feasible mitigation measures that go beyond what is required by law be utilized to minimize these impacts. Any impacts resulting from mitigation measures must also be analyzed. Several resources to assist the Lead Agency with identifying potential mitigation measures for the Proposed Project include South Coast AQMD's CEQA Air Quality Handbook¹, South Coast AQMD's Mitigation Monitoring and Reporting Plan for the 2016 Air Quality Management Plan⁹, and Southern California Association of Government's Mitigation Monitoring and Reporting Plan for the 2020-2045 Regional Transportation Plan/Sustainable Communities Strategy¹⁰.

⁵ *Ibid.*

⁶ CARB's *Air Quality and Land Use Handbook: A Community Health Perspective* can be found at: <http://www.arb.ca.gov/ch/handbook.pdf>.

⁷ CARB's technical advisory can be found at: <https://www.arb.ca.gov/ch/landuse.htm>.

⁸ South Coast AQMD. 2005. *Guidance Document for Addressing Air Quality Issues in General Plans and Local Planning*. Available at: <http://www.aqmd.gov/docs/default-source/planning/air-quality-guidance/complete-guidance-document.pdf>.

⁹ South Coast AQMD's 2016 Air Quality Management Plan can be found at: <http://www.aqmd.gov/docs/default-source/Agendas/Governing-Board/2017/2017-mar3-035.pdf> (starting on page 86).

¹⁰ Southern California Association of Governments' 2020-2045 RTP/SCS can be found at: https://www.connectsocial.org/Documents/PEIR/certified/Exhibit-A_ConnectSoCal_PEIR.pdf.

Health Risk Reduction Strategies

Many strategies are available to reduce exposures, including, but are not limited to, building filtration systems with MERV 13 or better, or in some cases, MERV 15 or better is recommended; building design, orientation, location; vegetation barriers or landscaping screening, etc. Enhanced filtration units are capable of reducing exposures. However, enhanced filtration systems have limitations. For example, in a study that South Coast AQMD conducted to investigate filters¹¹, a cost burden is expected to be within the range of \$120 to \$240 per year to replace each filter panel. The initial start-up cost could substantially increase if an HVAC system needs to be installed and if standalone filter units are required. Installation costs may vary and include costs for conducting site assessments and obtaining permits and approvals before filters can be installed. Other costs may include filter life monitoring, annual maintenance, and training for conducting maintenance and reporting. In addition, because the filters would not have any effectiveness unless the HVAC system is running, there may be increased energy consumption that the Lead Agency should evaluate in the Draft EIR. It is typically assumed that the filters operate 100 percent of the time while residents are indoors, and the environmental analysis does not generally account for the times when the residents have their windows or doors open or are in common space areas of the project. These filters have no ability to filter out any toxic gases. Furthermore, when used filters are replaced, replacement has the potential to result in emissions from the transportation of used filters at disposal sites and generate solid waste that the Lead Agency should evaluate in the Draft EIR. Therefore, the presumed effectiveness and feasibility of any filtration units should be carefully evaluated in more detail prior to assuming that they will sufficiently alleviate exposures to diesel particulate matter emissions.

South Coast AQMD staff is available to work with the Lead Agency to ensure that air quality, greenhouse gas, and health risk impacts from the Proposed Project are accurately evaluated and mitigated where feasible. If you have any questions regarding this letter, please contact me at mmorris@aqmd.gov.

Sincerely,

Michael Morris

Michael Morris
Planning and Rules Manager, CEQA IGR
Planning, Rule Development & Area Sources

MM
RVC220809-08
Control Number

¹¹ This study evaluated filters rated MERV 13 or better. Accessed at: <http://www.aqmd.gov/docs/default-source/ceqa/handbook/aqmdpilotstudyfinalreport.pdf>. Also see 2012 Peer Review Journal article by South Coast AQMD: <https://onlinelibrary.wiley.com/doi/10.1111/ina.12013>.



GABRIELENO BAND OF MISSION INDIANS - KIZH NATION
Historically known as The Gabrielino Tribal Council - San Gabriel Band of Mission Indians
recognized by the State of California as the aboriginal tribe of the Los Angeles basin

August 16, 2022

Project Name: Eastvale 2040 General Plan Update, City of Eastvale

Thank you for your letter dated August 5, 2022 regarding the project above. This is to concur that we are in agreement with the General Plan update. However, our Tribal government would like to request consultation if there will be ground disturbance occurring for any and all future projects within this location.

Sincerely,

Andrew Salas, Chairman
Gabrieleno Band of Mission Indians – Kizh Nation
1(844)390-0787

Andrew Salas, Chairman

Albert Perez, treasurer I

Nadine Salas, Vice-Chairman

Martha Gonzalez Lemos, treasurer II

Dr. Christina Swindall Martinez, secretary

Richard Gradias, Chairman of the council of Elders

PO Box 393 Covina, CA 91723

www.gabrielenoindians.org

admin@gabrielenoindians.org

From: [Raslich, Nicole \(TRBL\)](#)
To: [Gustavo Gonzalez](#)
Subject: EIRPrep
Date: Tuesday, August 16, 2022 2:40:14 PM
Attachments: [image001.png](#)
[08-08-2022 Eastvale EIRPrep.pdf](#)

[The e-mail below is from an external source. Please do not open attachments or click links from an unknown or suspicious origin.]

Hello,

We appreciate your effort and thank you for your inquiry.

A records check of the Tribal Historic preservation office's cultural registry revealed that this project is not located within the Tribe's Traditional Use Area. Therefore, we defer to the other tribes in the area. This letter shall conclude our consultation efforts.

Best,

Nicole A. Raslich, M.A.

Archaeological Technician

Tribal Historic Preservation Office

Agua Caliente Band of Cahuilla Indians

D: +1 (760) 883-1134

C: +1 (760) 985-3615

nraslich@aguacaliente.net



From: [Vega, Jaqueline](#)
To: [Gustavo Gonzalez](#)
Cc: [Rull, Paul](#)
Subject: Eastvale 2040 General Plan
Date: Thursday, August 18, 2022 9:51:36 AM
Attachments: [image001.png](#)
[New Complete ALUC Application.pdf](#)

[The e-mail below is from an external source. Please do not open attachments or click links from an unknown or suspicious origin.]

Hello Gustavo,

Thank you for transmitting the above referenced project to ALUC for review. Please note that the proposed project is a legislative action (citywide) and will require review by ALUC.

Please see attached application and let me know if you have any questions.

Jackie Vega
Urban Regional Planner I



Confidentiality Disclaimer

This email is confidential and intended solely for the use of the individual(s) to whom it is addressed. The information contained in this message may be privileged and confidential and protected from disclosure. If you are not the author's intended recipient, be advised that you have received this email in error and that any use, dissemination, forwarding, printing, or copying of this email is strictly prohibited. If you have received this email in error please delete all copies, both electronic and printed, and contact the author immediately.

[County of Riverside California](#)

Rincon Band of Luiseño Indians

CULTURAL RESOURCES DEPARTMENT

One Government Center Lane | Valley Center | CA 92082
(760) 749-1092 | Fax: (760) 749-8901 | rincon-nsn.gov



August 22, 2022

Sent via e-mail: ggonzalez@eastvalca.gov

Re: Eastvale 2040 Project

Dear Mr. Gonzalez,

This letter is written on behalf of Rincon Band of Luiseño Indians, (“Rincon Band” or “Band”), a federally recognized Indian Tribe and sovereign government.

The Band has received the notification for the above referenced project. The location identified within project documents is not within the Band’s specific Area of Historic Interest (AHI).

At this time, we have no additional information to provide. We recommend that you directly contact a Tribe that is closer to the project and may have pertinent information.

Thank you for submitting this project for Tribal review. If you have additional questions or concerns, please do not hesitate to contact our office at your convenience at (760) 749-1092 or via electronic mail at crd@rincon-nsn.gov.

Thank you for the opportunity to protect and preserve our cultural assets.

Sincerely,

Deneen Pelton

Cultural Resources Department Coordinator
Rincon Culture Resources Department

From: [John C.](#)
To: [Gustavo Gonzalez](#)
Subject: Development Question
Date: Sunday, September 4, 2022 1:15:28 PM

[The e-mail below is from an external source. Please do not open attachments or click links from an unknown or suspicious origin.]

Hey Gustavo, I had completely forgotten to send you my concerns after the city hall meeting last week so I hope it is not too late.

1. What is the plan to lower/minimize water needs for the development? Seeing that Southern California's water issues are expected to increase, the development should be made with this in mind. For example using a desert/rock landscape instead of a green landscape.
2. What are the traffic control plans? Many of our main streets entering our commerce centers experience long traffic light wait times. Currently Eastvale's public transportation does not accommodate most of the city so most people are expected to drive.



State of California – Natural Resources Agency
DEPARTMENT OF FISH AND WILDLIFE
Inland Deserts Region
3602 Inland Empire Boulevard, Suite C-220
Ontario, CA 91764
www.wildlife.ca.gov

GAVIN NEWSOM, Governor
CHARLTON H. BONHAM, Director



September 6, 2022
Sent via email

Gustavo N. Gonzalez
City of Eastvale
12363 Limonite Ave
Eastvale, CA 92583
ggonzalez@eastvaleca.gov

Subject: Notice of Preparation of a Draft Environmental Impact Report City of
Eastvale General Plan Update
State Clearinghouse No. 2022080090

Dear Mr. Gonzalez:

The California Department of Fish and Wildlife (CDFW) received a Notice of Preparation (NOP) of a Draft Environmental Impact Report (DEIR) from the City of Eastvale (City) for the City's General Plan Update (Project; Eastvale 2040) pursuant the California Environmental Quality Act (CEQA) and CEQA Guidelines.¹

Thank you for the opportunity to provide comments and recommendations regarding those activities involved in the Project that may affect California fish and wildlife. Likewise, we appreciate the opportunity to provide comments regarding those aspects of the Project that CDFW, by law, may be required to carry out or approve through the exercise of its own regulatory authority under the Fish and Game Code.

CDFW ROLE

CDFW is California's Trustee Agency for fish and wildlife resources, and holds those resources in trust by statute for all the people of the State. (Fish & G. Code, §§ 711.7, subd. (a) & 1802; Pub. Resources Code, § 21070; CEQA Guidelines § 15386, subd. (a).) CDFW, in its trustee capacity, has jurisdiction over the conservation, protection, and management of fish, wildlife, native plants, and habitat necessary for biologically sustainable populations of those species. (*Id.*, § 1802.) Similarly, for purposes of CEQA, CDFW is charged by law to provide, as available, biological expertise during public agency environmental review efforts, focusing specifically on projects and related activities that have the potential to adversely affect fish and wildlife resources.

CDFW is also submitting comments as a Responsible Agency under CEQA (Pub. Resources Code, § 21069; CEQA Guidelines, § 15381.). CDFW expects that it may need to exercise regulatory authority as provided by the Fish and Game Code. As proposed, for example, the Project may be subject to CDFW's lake and streambed alteration regulatory authority. (Fish & G. Code, § 1600 et seq.) Likewise, to the extent implementation of the Project as proposed may result in "take" as defined by State law of any species protected under the California Endangered Species Act (CESA) (Fish &

G. Code, § 2050 et seq.), the Project proponent may seek related take authorization as provided by the Fish and Game Code.

PROJECT DESCRIPTION SUMMARY

Project Location

The City of Eastvale (City) is located in Riverside County, west of Interstate 15, southeast of the San Bernardino County line and directly north of the Santa Ana River. The City is approximately 13.1 square miles (8,384 acres) and includes a portion of the Santa Ana River directly east of Prado Dam. The Planning Area is the geographic area for which the proposed Project, Eastvale 2040, provides a framework for long-term growth and resource conservation. *Project Description*

The City is preparing a comprehensive update to its existing General Plan, which will guide the City's future development and conservation through land use objectives and policy guidance, and constitutes the policy and regulatory framework by which future development projects will be reviewed and public improvements will be implemented. The proposed Project, Eastvale 2040, will update all the state-required elements, including Land Use, Circulation, Housing, Conservation, Open Space, Noise, and Safety. The Eastvale 2040 Plan will also address urban design, environmental justice, economic development, public health, and sustainability. The City will implement the Eastvale 2040 Plan by requiring development, infrastructure improvements, and other projects to be consistent with its policies and by implementing the actions included in the Plan. The Eastvale 2040 Plan will include a comprehensive set of goals, policies, and actions, as well as a revised Land Use Map. The Planning Area is the geographic area for which the proposed Project, provides a framework for long-term growth and resource conservation.

COMMENTS AND RECOMMENDATIONS

CDFW offers the comments and recommendations below to assist the City in adequately identifying and/or mitigating the Project's significant, or potentially significant, direct and indirect impacts on fish and wildlife (biological) resources. The comments and recommendations are also offered to enable the CDFW to adequately review and comment on the proposed Project with respect to the Project's consistency with the Western Riverside County Multiple Species Habitat Conservation Plan (MSHCP).

CDFW recommends that the forthcoming DEIR address the following:

Assessment of Biological Resources

Section 15125(c) of the CEQA Guidelines states that knowledge of the regional setting of a project is critical to the assessment of environmental impacts and that special emphasis should be placed on environmental resources that are rare or unique to the

region. To enable CDFW staff to adequately review and comment on the project, the DEIR should include a complete assessment of the flora and fauna within and adjacent to the Project footprint, with particular emphasis on identifying rare, threatened, endangered, and other sensitive species and their associated habitats.

CDFW recommends that the DEIR specifically include:

1. An assessment of the various habitat types located within the project footprint, and a map that identifies the location of each habitat type. CDFW recommends that floristic, alliance- and/or association-based mapping and assessment be completed following *The Manual of California Vegetation*, second edition (Sawyer et al. 2009¹). Adjoining habitat areas should also be included in this assessment where site activities could lead to direct or indirect impacts offsite. Habitat mapping at the alliance level will help establish baseline vegetation conditions.
2. A general biological inventory of the fish, amphibian, reptile, bird, and mammal species that are present or have the potential to be present within each habitat type onsite and within adjacent areas that could be affected by the project. CDFW's California Natural Diversity Database (CNDDDB) in Sacramento should be contacted at (916) 322-2493 or CNDDDB@wildlife.ca.gov or <https://wildlife.ca.gov/Data/CNDDDB/Maps-and-Data> to obtain current information on any previously reported sensitive species and habitat, including Significant Natural Areas identified under Chapter 12 of the Fish and Game Code, in the vicinity of the proposed Project.

CDFW's CNDDDB is not exhaustive in terms of the data it houses, nor is it an absence database. CDFW recommends that it be used as a starting point in gathering information about the *potential presence* of species within the general area of the project site.

3. A complete, *recent* inventory of rare, threatened, endangered, and other sensitive species located within the Project footprint and within offsite areas with the potential to be affected, including California Species of Special Concern (CSSC) and California Fully Protected Species (Fish & G. Code, § 3511). Species to be addressed should include all those which meet the CEQA definition (CEQA Guidelines § 15380). The inventory should address seasonal variations in use of the Project area and should not be limited to resident species. Focused species-specific/MSHCP surveys, completed by a qualified biologist and conducted at the appropriate time of year and

¹ Sawyer, J. O., T. Keeler-Wolf, and J. M. Evens. 2009. A manual of California Vegetation, 2nd ed. California Native Plant Society Press, Sacramento, California. <http://vegetation.cnps.org/>

time of day when the sensitive species are active or otherwise identifiable, are required. Acceptable species-specific survey procedures should be developed in consultation with CDFW and the U.S. Fish and Wildlife Service, where necessary. Note that CDFW generally considers biological field assessments for wildlife to be valid for a one-year period, and assessments for rare plants may be considered valid for a period of up to three years. Some aspects of the proposed Project may warrant periodic updated surveys for certain sensitive taxa, particularly if the Project is proposed to occur over a protracted time frame, or in phases, or if surveys are completed during periods of drought.

4. A thorough, recent, floristic-based assessment of special status plants and natural communities, following CDFW's Protocols for Surveying and Evaluating Impacts to Special Status Native Plant Populations and Natural Communities (CDFW 2018²).
5. Information on the regional setting that is critical to an assessment of environmental impacts, with special emphasis on resources that are rare or unique to the region (CEQA Guidelines § 15125[c]).
6. A full accounting of all open space and mitigation/conservation lands within and adjacent to the Project.

Analysis of Direct, Indirect, and Cumulative Impacts to Biological Resources

The DEIR should provide a thorough discussion of the direct, indirect, and cumulative impacts expected to adversely affect biological resources as a result of the Project. To ensure that Project impacts to biological resources are fully analyzed, the following information should be included in the DEIR:

1. A discussion of potential impacts from lighting, noise, human activity (e.g., recreation), defensible space, and wildlife-human interactions created by zoning of development projects or other project activities adjacent to natural areas, exotic and/or invasive species, and drainage. The latter subject should address Project-related changes on drainage patterns and water quality within, upstream, and downstream of the Project site, including: volume, velocity, and frequency of existing and post-Project surface flows; polluted runoff; soil erosion and/or sedimentation in streams and water bodies; and post-Project fate of runoff from the Project site.
2. A discussion of potential indirect Project impacts on biological resources, including resources in areas adjacent to the project footprint, such as nearby public lands (e.g., National Forests, State Parks, etc.), open space, adjacent natural habitats, riparian

² CDFW, 2018. Protocols for Surveying and Evaluating Impacts to Special Status Native Plant Populations and Sensitive Natural Communities, State of California, California Natural Resources Agency, Department of Fish and Wildlife: March 20, 2018 (<https://nrm.dfg.ca.gov/FileHandler.ashx?DocumentID=18959&inline>)

ecosystems, wildlife corridors, and any designated and/or proposed reserve or mitigation lands (e.g., preserved lands associated with a Natural Community Conservation Plan, or other conserved lands).

3. An evaluation of impacts to on-site and adjacent open space lands from both the construction of the Project and any long-term operational and maintenance needs.
4. A cumulative effects analysis developed as described under CEQA Guidelines section 15130. The DEIR should analyze the cumulative effects of the plan's land use designations, policies, and programs on the environment. Please include all potential direct and indirect Project related impacts to riparian areas, wetlands, vernal pools, alluvial fan habitats, wildlife corridors or wildlife movement areas, aquatic habitats, sensitive species and other sensitive habitats, open lands, open space, and adjacent natural habitats in the cumulative effects analysis. General and specific plans, as well as past, present, and anticipated future projects, should be analyzed relative to their impacts on similar plant communities and wildlife habitats.

Alternatives Analysis

CDFW recommends the DEIR describe and analyze a range of reasonable alternatives to the Project that are potentially feasible, would "feasibly attain most of the basic objectives of the Project," and would avoid or substantially lessen any of the Project's significant effects (CEQA Guidelines § 15126.6[a]). The alternatives analysis should also evaluate a "no project" alternative (CEQA Guidelines § 15126.6[e]). The no Project alternative should evaluate how the changing environment, such as climate change and drought, may affect the community if a new or revised general plan were not adopted.

Mitigation Measures for Project Impacts to Biological Resources

The DEIR should identify mitigation measures and alternatives that are appropriate and adequate to avoid or minimize potential impacts, to the extent feasible. The City of Eastvale should assess all direct, indirect, and cumulative impacts that are expected to occur as a result of the implementation of the Project and its long-term operation and maintenance. When proposing measures to avoid, minimize, or mitigate impacts, CDFW recommends consideration of the following:

1. *Fully Protected Species*: Fully protected species may not be taken or possessed at any time. Project activities described in the DEIR should be designed to completely avoid any fully protected species that have the potential to be present within or adjacent to the Project area. CDFW also recommends that the DEIR fully analyze potential adverse impacts to fully protected species due to habitat modification, loss of foraging habitat, and/or interruption of migratory and breeding behaviors. CDFW recommends that the Lead Agency include in the analysis how appropriate avoidance, minimization, and mitigation measures will reduce indirect impacts to fully protected species.

2. *Sensitive Plant Communities*: CDFW considers sensitive plant communities to be imperiled habitats having both local and regional significance. Plant communities, alliances, and associations with a statewide ranking of S-1, S-2, S-3, and S-4 should be considered sensitive and declining at the local and regional level. These ranks can be obtained by querying the CNDDB and are included in *The Manual of California Vegetation* (Sawyer et al. 2009). The DEIR should include measures to fully avoid and otherwise protect sensitive plant communities from project-related direct and indirect impacts.
3. *California Species of Special Concern (CSSC)*: CSSC status applies to animals generally not listed under the federal Endangered Species Act or the CESA, but which nonetheless are declining at a rate that could result in listing, or historically occurred in low numbers and known threats to their persistence currently exist. CSSCs should be considered during the environmental review process. CSSC that have the potential or have been documented to occur within or adjacent to the project area, including, but not limited to: burrowing owl, northern harrier, loggerhead shrike, and yellow warbler.
4. *Mitigation*: CDFW considers adverse project-related impacts to sensitive species and habitats to be significant to both local and regional ecosystems, and the DEIR should include mitigation measures for adverse project-related impacts to these resources. Mitigation measures should emphasize avoidance and reduction of project impacts. For unavoidable impacts, onsite habitat restoration and/or enhancement, and preservation should be evaluated and discussed in detail. Where habitat preservation is not available onsite, offsite land acquisition, management, and preservation should be evaluated and discussed in detail.

The DEIR should include measures to perpetually protect the targeted habitat values within mitigation areas from direct and indirect adverse impacts in order to meet mitigation objectives to offset project-induced qualitative and quantitative losses of biological values. Specific issues that should be addressed include restrictions on access, proposed land dedications, long-term monitoring and management programs, control of illegal dumping, water pollution, increased human intrusion, etc.

If sensitive species and/or their habitat may be impacted from the Project, CDFW recommends the inclusion of specific mitigation in the DEIR. CEQA Guidelines section 15126.4, subdivision (a)(1)(8) states that formulation of feasible mitigation measures should not be deferred until some future date. The Court of Appeal in *San Joaquin Raptor Rescue Center v. County of Merced* (2007) 149 Cal.App.4th 645 struck down mitigation measures which required formulating management plans developed in consultation with State and Federal wildlife agencies after Project approval. Courts have also repeatedly not supported conclusions that impacts are mitigable when essential studies, and therefore impact assessments, are incomplete (*Sundstrom v. County of Mendocino* (1988) 202 Cal. App. 3d. 296; *Gentry v. City of*

Murrieta (1995) 36 Cal. App. 4th 1359; *Endangered Habitat League, Inc. v. County of Orange* (2005) 131 Cal. App. 4th 777).

CDFW recommends that the DEIR specify mitigation that is roughly proportional to the level of impacts, in accordance with the provisions of CEQA (CEQA Guidelines, §§ 15126.4(a)(4)(B), 15064, 15065, and 16355). The mitigation should provide long-term conservation value for the suite of species and habitat being impacted by the Project. Furthermore, in order for mitigation measures to be effective, they need to be specific, enforceable, and feasible actions that will improve environmental conditions.

5. *Habitat Revegetation/Restoration Plans*: Plans for restoration and revegetation should be prepared by persons with expertise in southern California ecosystems and native plant restoration techniques. Plans should identify the assumptions used to develop the proposed restoration strategy. Each plan should include, at a minimum: (a) the location of restoration sites and assessment of appropriate reference sites; (b) the plant species to be used, sources of local propagules, container sizes, and seeding rates; (c) a schematic depicting the mitigation area; (d) a local seed and cuttings and planting schedule; (e) a description of the irrigation methodology; (f) measures to control exotic vegetation on site; (g) specific success criteria; (h) a detailed monitoring program; (i) contingency measures should the success criteria not be met; and (j) identification of the party responsible for meeting the success criteria and providing for conservation of the mitigation site in perpetuity. Monitoring of restoration areas should extend across a sufficient time frame to ensure that the new habitat is established, self-sustaining, and capable of surviving drought.

CDFW recommends that local onsite propagules from the Project area and nearby vicinity be collected and used for restoration purposes. Onsite seed collection should be initiated in advance of project impacts in order to accumulate sufficient propagule material for subsequent use in future years. Onsite vegetation mapping at the alliance and/or association level should be used to develop appropriate restoration goals and local plant palettes. Reference areas should be identified to help guide restoration efforts. Specific restoration plans should be developed for various project components as appropriate.

Restoration objectives should include protecting special habitat elements or re-creating them in areas affected by the Project; examples could include retention of woody material, logs, snags, rocks, and brush piles.

6. *Nesting Birds and Migratory Bird Treaty Act*: Please note that it is the Project proponent's responsibility to comply with all applicable laws related to nesting birds and birds of prey. Fish and Game Code sections 3503, 3503.5, and 3513 afford protective measures as follows: Fish and Game Code section 3503 makes it unlawful to take, possess, or needlessly destroy the nest or eggs of any bird, except as otherwise provided by Fish and Game Code or any regulation made pursuant thereto. Fish and Game Code section 3503.5 makes it unlawful to take, possess, or destroy

any birds in the orders Falconiformes or Strigiformes (birds-of-prey) to take, possess, or destroy the nest or eggs of any such bird except as otherwise provided by Fish and Game Code or any regulation adopted pursuant thereto. Fish and Game Code section 3513 makes it unlawful to take or possess any migratory nongame bird as designated in the Migratory Bird Treaty Act or any part of such migratory nongame bird except as provided by rules and regulations adopted by the Secretary of the Interior under provisions of the Migratory Treaty Act.

CDFW recommends that the DEIR include the results of avian surveys, as well as specific avoidance and minimization measures to ensure that impacts to nesting birds do not occur. Project-specific avoidance and minimization measures may include, but not be limited to project phasing and timing, monitoring of project-related noise (where applicable), sound walls, and buffers, where appropriate. The DEIR should also include specific avoidance and minimization measures that will be implemented should a nest be located within the project site. If pre-construction surveys are proposed in the DEIR, the CDFW recommends that they be required no more than three (3) days prior to vegetation clearing or ground disturbance activities, as instances of nesting could be missed if surveys are conducted sooner.

7. *Moving out of Harm's Way*: To avoid direct mortality, CDFW recommends that the lead agency condition the DEIR to require that a CDFW-approved qualified biologist be retained to be onsite prior to and during all ground- and habitat-disturbing activities to move out of harm's way special status species or other wildlife of low or limited mobility that would otherwise be injured or killed from project-related activities. Movement of wildlife out of harm's way should be limited to only those individuals that would otherwise be injured or killed, and individuals should be moved only as far as necessary to ensure their safety (i.e., CDFW does not recommend relocation to other areas). Furthermore, it should be noted that the temporary relocation of onsite wildlife does not constitute effective mitigation for the purposes of offsetting project impacts associated with habitat loss.
8. *Translocation of Species*: CDFW generally does not support the use of relocation, salvage, and/or transplantation as mitigation for impacts to rare, threatened, or endangered species as studies have shown that these efforts are experimental in nature and largely unsuccessful.

California Endangered Species Act

CDFW is responsible for ensuring appropriate conservation of fish and wildlife resources including threatened, endangered, and/or candidate plant and animal species, pursuant to CESA. CDFW recommends that a CESA Incidental Take Permit (ITP) be obtained if the Project has the potential to result in "take" (California Fish and Game Code Section 86 defines "take" as "hunt, pursue, catch, capture, or kill, or attempt to hunt, pursue, catch, capture, or kill") of State-listed CESA species, either through

construction or over the life of the project. It is the policy of CESA to conserve, protect, enhance, and restore State-listed CESA species and their habitats.

CDFW encourages early consultation, as significant modification to the proposed Project and avoidance, minimization, and mitigation measures may be necessary to obtain a CESA ITP. The California Fish and Game Code requires that CDFW comply with CEQA for issuance of a CESA ITP. CDFW therefore recommends that the DEIR addresses all Project impacts to listed species and specifies a mitigation monitoring and reporting program that will meet the requirements of CESA.

Western Riverside County Multiple Species Habitat Conservation Plan

CDFW issued Natural Community Conservation Plan Approval and Take Authorization for the Western Riverside County MSHCP per Section 2800, *et seq.*, of the California Fish and Game Code on June 22, 2004. The MSHCP establishes a multiple species conservation program to minimize and mitigate habitat loss and provides for the incidental take of covered species in association with activities covered under the permit.

Compliance with approved habitat plans, such as the MSHCP, is discussed in CEQA. Specifically, Section 15125(d) of the CEQA Guidelines requires that the CEQA document discuss any inconsistencies between a proposed Project and applicable general plans and regional plans, including habitat conservation plans and natural community conservation plans. An assessment of the impacts to the MSHCP as a result of this Project is necessary to address CEQA requirements. To obtain additional information regarding the MSHCP please go to: <https://www.wrc-rca.org/>.

The proposed Project occurs within the MSHCP area and is subject to the provisions and policies of the MSHCP. To be considered a covered activity, Permittees need to demonstrate that proposed actions are consistent with the MSHCP, the Permits, and the Implementing Agreement. The City of Eastvale is the Lead Agency and is signatory to the Implementing Agreement of the MSHCP. To demonstrate consistency with the MSHCP, as part of the CEQA review, the City shall ensure the Project implements the following:

- a. Addressing the collection of fees as set forth in Section 8.5 of the MSHCP (City of Eastvale Ordinance NO. 21-05)
- b. Demonstrates compliance with the HANS process or equivalent process to ensure application of the Criteria and thus, satisfaction of the local acquisition obligation.
- c. Demonstrates compliance with the policies for 1) the Protection of Species Associated with Riparian/Riverine Areas and Vernal Pools, set forth in Section 6.1.2 of the MSHCP; 2) the policies for the Protection of Narrow Endemic Plant Species set forth in Section 6.1.3 of the MSHCP; 3) compliance with the Urban/Wildlands

Interface Guidelines as set forth in Section 6.1.4 of the MSHCP; 4) the Additional Survey Needs and Procedures as set forth in Section 6.3.2 and associated vegetation survey requirements identified in Section 6.3.1; and 5) compliance with the Best Management Practices and the siting, construction, design, operation and maintenance guidelines as set forth in Section 7.0 and Appendix C of the MSHCP.

Because the Project is located within the MSHCP Criteria Area, pursuant to the Implementing Agreement and the City's Resolution No. 10-49, public and private projects are expected to be designed and implemented in accordance with the Criteria for each Area Plan and all other MSHCP requirements as set forth in the MSHCP and in Section 13.0 of the Implementing Agreement. Section 13.2 of the Implementing Agreement identifies that City obligations under the MSHCP and the Implementing Agreement include, but are not limited to: the adoption and maintenance of ordinances or resolutions (City Ordinance No. 21-05 and Resolution No. 10-49), as necessary, and the amendment of general plans as appropriate, to implement the requirements and to fulfill the purposes of the Permits, the MSHCP, and the Implementing Agreement for private and public development projects (including siting, construction, design, operation and maintenance guidelines as set forth in Section 7.0 and Appendix C of the MSHCP); and taking all necessary and appropriate actions, following applicable land use permit enforcement procedures and practices, to enforce the terms of the project approvals for public and private projects, including compliance with the MSHCP, the Permits, and the Implementing Agreement.

The MSHCP identifies that the CDFW and the U. S. Fish and Wildlife Service shall be notified in advance of approval of public and private projects for identified MSHCP activities. Therefore, CDFW recommends that the Eastvale 2040 Plan should identify that required MSHCP processes are completed prior to City approval of future projects. The City is also obligated to notify the Western Riverside County Regional Conservation Authority (RCA), through the Joint Project/Acquisition Review Process set forth in Section 6.6.2 of the MSHCP or proposed discretionary Projects within the Criteria Area and participate in any further requirements imposed by MSHCP Section 6.6.2.

To examine how the Project might contribute to, or conflict with, assembly of the MSHCP Conservation Area consistent with the reserve configuration requirements CDFW recommends that the DEIR identify the specific Area Plan and Area Plan Subunit within which the Project is located, and the associated Planning Species and Biological Issues and Considerations that may apply to the Project. The DEIR should also discuss the specific Criteria for Cells or Cell Groups within which the Project is located and identify the associated Core(s) and/or Linkage(s). Next, the DEIR should identify the vegetation communities toward which conservation should be directed along with the connectivity requirements. Finally, the DEIR should examine the Project with respect to the percentage conservation portion within the Cells or Cell Groups.

Following this sequential identification of the relationship of the Project to the MSHCP the DEIR should then include an in-depth discussion of the Project in the context of

these aforementioned elements, and as mentioned, examine how the Project might contribute to, or conflict with, the conservation criteria of the MSHCP.

CDFW also recommends that the City demonstrate how the Project is consistent with Section 7.0 of the MSHCP. For projects proposed within Public/Quasi-Public Lands, the DEIR should include a discussion of the Eastvale 2040 plan and its consistency with MSHCP requirements for Covered Activities within Existing Public/Quasi-Public lands (Section 7.2), and for projects proposed inside the MSHCP Criteria Area, the DEIR should include a discussion of the Project and its consistency with the MSHCP requirements for Covered Activities Inside Criteria Area (Section 7.3 of the MSHCP). Where maintenance of existing roads within the Criteria Area is proposed, CDFW recommends that the City reference MSHCP Section 7.3.4 and Table 7-3, which provides a summary of the existing roads permitted to remain in the MSHCP Criteria Area. Planned roads within the MSHCP Criteria Area are discussed in MSHCP Section 7.3.5 and identified on Figure 7-1. Please note that roadways other than those identified in Section 7.3.5 of the MSHCP are not covered without an amendment to the MSHCP in accordance with the procedures described in MSHCP Section 6.10. CDFW recommends that the City review MSHCP Section 7.3.5 and include in the DEIR information that demonstrates that Project-related roads are MSHCP covered activities. The DEIR should also discuss design and siting information for all proposed roads to ensure that the roads are sited, designed, and constructed in a manner consistent with MSHCP conservation objectives.

CDFW recommends that the DEIR also include a discussion of the Project and MSHCP Section 7.4, which identifies and discusses allowable uses in the MSHCP Conservation Area. For example, if trails are proposed as part of the Project, the DEIR should discuss whether the trail is identified on Figure 7-4, and provide details regarding trail construction (siting and design), and operations and maintenance that demonstrate that the proposed trail is consistent with MSHCP Section 7.4.

Regardless of whether take of threatened and/or endangered species is obtained through the MSHCP or through a CESA ITP, the DEIR needs to address how the proposed Project will affect the policies and procedures of the MSHCP.

Stephens' Kangaroo Rat Habitat Conservation Plan

The Project occurs within the Stephens' kangaroo rat (*Dipodomys stephensi*) Habitat Conservation Plan (SKR HCP) fee area boundary, SKR HCP plan area map available here: <https://rchca.us/DocumentCenter/View/200/SKR-Plan-Area>. State and federal authorizations associated with the SKR HCP provide take authorization for Stephens' kangaroo rat within its boundaries, and the MSHCP provides Take Authorization for Stephens' kangaroo rat outside of the boundaries of the SKR HCP, but within the MSHCP area boundaries. The DEIR should identify if any portion of the Project will occur on SKR HCP lands, or on Stephens' kangaroo rat habitat lands outside of the SKR HCP, but within the MSHCP. Note that the SKR HCP allows for encroachment into

the Stephens' kangaroo rat Core Reserve for public projects, however, there are no provisions for encroachment into the Core Reserve for privately owned projects. If impacts to Stephens' kangaroo rat habitat will occur from the proposed Project, the DEIR should specifically identify the total number of permanent impacts to Stephens' kangaroo rat core habitat and the appropriate mitigation to compensate for those impacts.

Lake and Streambed Alteration Program

Based on review of material submitted with the NOP and review of aerial photography, at least one drainage feature traverses the site. Depending on how the Project is designed and constructed, it is likely that the Project applicant will need to notify CDFW per Fish and Game Code section 1602. Fish and Game Code section 1602 requires an entity to notify CDFW prior to commencing any activity that may do one or more of the following: substantially divert or obstruct the natural flow of any river, stream, or lake; substantially change or use any material from the bed, channel or bank of any river, stream, or lake; or deposit debris, waste or other materials that could pass into any river, stream, or lake. Please note that "any river, stream or lake" includes those that are episodic (i.e., those that are dry for periods of time) as well as those that are perennial (i.e., those that flow year-round). This includes ephemeral streams, desert washes, and watercourses with a subsurface flow.

Upon receipt of a complete notification, CDFW determines if the proposed Project activities may substantially adversely affect existing fish and wildlife resources and whether a Lake and Streambed Alteration (LSA) Agreement is required. An LSA Agreement includes measures necessary to protect existing fish and wildlife resources. CDFW may suggest ways to modify your Project that would eliminate or reduce harmful impacts to fish and wildlife resources.

CDFW's issuance of an LSA Agreement is a "project" subject to CEQA (see Pub. Resources Code § 21065). To facilitate issuance of an LSA Agreement, if necessary, the DEIR should fully identify the potential impacts to the lake, stream, or riparian resources, and provide adequate avoidance, mitigation, and monitoring and reporting commitments. Early consultation with CDFW is recommended, since modification of the proposed Project may be required to avoid or reduce impacts to fish and wildlife resources. To submit a Lake or Streambed Alteration notification, please go to <https://wildlife.ca.gov/Conservation/Environmental-Review/EPIMS>.

ADDITIONAL COMMENTS AND RECOMMENDATIONS

To ameliorate the water demands of this Project, CDFW recommends incorporation of water-wise concepts in project landscape design plans. In particular, CDFW recommends xeriscaping with locally native California species, and installing water-efficient and targeted irrigation systems (such as drip irrigation). Native plants support butterflies, birds, reptiles, amphibians, small mammals, bees, and other pollinators that

evolved with those plants, more information on native plants suitable for the Project location and nearby nurseries is available at CALSCAPE: <https://calscape.org/>. Local water agencies/districts and resource conservation districts in your area may be able to provide information on plant nurseries that carry locally native species, and some facilities display drought-tolerant locally native species demonstration gardens (for example the Riverside-Corona Resource Conservation District in Riverside). Information on drought-tolerant landscaping and water-efficient irrigation systems is available on California's Save our Water website: <https://saveourwater.com/>.

ENVIRONMENTAL DATA

CEQA requires that information developed in environmental impact reports and negative declarations be incorporated into a database which may be used to make subsequent or supplemental environmental determinations. (Pub. Resources Code, § 21003, subd. (e).) Accordingly, please report any special status species and natural communities detected during Project surveys to the California Natural Diversity Database (CNDDB). Information can be submitted online or via completion of the CNDDB field survey form at the following link:

<https://wildlife.ca.gov/Data/CNDDB/Submitting-Data>. The types of information reported to CNDDB can be found at the following link:
<https://www.wildlife.ca.gov/Data/CNDDB/Plants-and-Animals>.

ENVIRONMENTAL DOCUMENT FILING FEES


The Project, as proposed, would have an impact on fish and/or wildlife, and assessment of filing fees is necessary. Fees are payable upon filing of the Notice of Determination by the Lead Agency and serve to help defray the cost of environmental review by CDFW. Payment of the fee is required in order for the underlying project approval to be operative, vested, and final. (Cal. Code Regs, tit. 14, § 753.5; Fish & G. Code, § 711.4; Pub. Resources Code, § 21089.).

CONCLUSION

CDFW appreciates the opportunity to comment on the NOP of a DEIR for the City of Eastvale General Plan Update (SCH No. 2022080090) and recommends that the City of Eastvale address CDFW's comments and concerns in the forthcoming DEIR. Questions regarding this letter or further coordination should be directed to Carly Beck, Senior Environmental Scientist (Specialist), at carly.beck@wildlife.ca.gov.

Gustavo N. Gonzalez, Planning Manager
City of Eastvale
September 6, 2022
Page 14 of 14

Sincerely,

DocuSigned by:

84F92FFEEFD24C8...

Kim Freeburn
Acting Environmental Program Manager

ec:

Heather Pert, Senior Environmental Scientist, Supervisor
Inland Deserts Region
heather.pert@wildlife.ca.gov

Office of Planning and Research, State Clearinghouse, Sacramento
state.clearinghouse@opr.ca.gov

Tricia Campbell (Western Riverside County Regional Conservation Authority)
Director of Reserve Management and Monitoring
tcampbell@rctc.org