

CULTURAL RESOURCES ASSESSMENT

Vista Verde Project Victorville, San Bernardino County, California

Prepared for:

Alex Glick
Assistant Development Manager
Guardian Capital
5780 Fleet Street, Suite 225
Carlsbad, California 92008

Prepared by:

David Brunzell, M.A., RPA
Contributions by Nicholas Shepetuk, B.A.
BCR Consulting LLC
Claremont, California 91711
Project No. GUA2101

Data Base Information:

Type of Study: Intensive Survey

Resources: None

Keywords: Victorville, Mojave

USGS Quadrangle: 7.5-minute Baldy Mesa (1988), California



BCRCONSULTING LLC

December 17, 2021

MANAGEMENT SUMMARY

BCR Consulting LLC (BCR Consulting) is under contract to Guardian Capital to complete a Cultural Resources Assessment of the proposed Vista Verde Project (the project) located in the City of Victorville, San Bernardino County, California. A cultural resources records search, intensive-level pedestrian field survey, Native American Heritage Commission (NAHC) Sacred Lands File Search, and vertebrate paleontological resources overview were conducted for the project in partial fulfillment of the California Environmental Quality Act (CEQA). The records search revealed that nine previous cultural resource studies have taken place and seven cultural resources have been identified within 0.5-mile of the project site. None of the previous studies have assessed the project site and no cultural resources have been identified within its boundaries. No cultural resources (including prehistoric and historic-period archaeological sites, and historic-period architectural) were identified during the field survey. Therefore, no significant impact related to historical resources is anticipated and no further investigations are recommended for the proposed project unless:

- The proposed project is changed to include areas that have not been subject to this cultural resource assessment;
- Cultural materials are encountered during project activities.

The current study attempted to determine whether significant archaeological deposits were present on the proposed project site. Although none were yielded during the records search and field survey, ground-disturbing activities have the potential to reveal buried deposits not observed on the surface. Prior to the initiation of ground-disturbing activities, field personnel should be alerted to the possibility of buried prehistoric or historic cultural deposits. In the event that field personnel encounter buried cultural materials, work in the immediate vicinity of the find should cease and a qualified archaeologist should be retained to assess the significance of the find. The qualified archaeologist shall have the authority to stop or divert construction excavation as necessary. If the qualified archaeologist finds that any cultural resources present meet eligibility requirements for listing on the California Register or the National Register of Historic Places (National Register), plans for the treatment, evaluation, and mitigation of impacts to the find will need to be developed. Prehistoric or historic cultural materials that may be encountered during ground-disturbing activities include:

- historic-period artifacts such as glass bottles and fragments, cans, nails, ceramic and pottery fragments, and other metal objects;
- historic-period structural or building foundations, walkways, cisterns, pipes, privies, and other structural elements;
- prehistoric flaked-stone artifacts and debitage (waste material), consisting of obsidian, basalt, and or cryptocrystalline silicates;
- groundstone artifacts, including mortars, pestles, and grinding slabs;
- dark, greasy soil that may be associated with charcoal, ash, bone, shell, flaked stone, groundstone, and fire affected rocks;
- human remains.

Findings were negative during the Sacred Lands File search with the NAHC. The results of the Sacred Lands File search are provided in Appendix B. The Legislature added requirements regarding tribal cultural resources for CEQA in Assembly Bill 52 (AB 52) that took effect July 1, 2015. AB 52 requires consultation with California Native American tribes and consideration of tribal cultural resources in the CEQA process. By including tribal cultural

resources early in the CEQA process, the legislature intended to ensure that local and Tribal governments, public agencies, and project proponents would have information available, early in the project planning process, to identify and address potential adverse impacts to tribal cultural resources. By taking this proactive approach, the legislature also intended to reduce the potential for delay and conflicts in the environmental review process. To help determine whether a project may have such an effect, the Public Resources Code requires a lead agency to consult with any California Native American tribe that requests consultation and is traditionally and culturally affiliated with the geographic area of a Proposed Project. Since the City will initiate and carry out the required AB52 Native American Consultation, the results of the consultation are not provided in this report. However, this report may be used during the consultation process, and BCR Consulting staff is available to answer questions and address concerns as necessary.

According to CEQA Guidelines, projects subject to CEQA must determine whether the project would “directly or indirectly destroy a unique paleontological resource”. The appended Paleontological Overview provided in Appendix B has recommended that:

The geologic units underlying the project area are mapped as Quaternary alluvium dating to the Pliocene-Holocene, which is potentially fossiliferous. Quaternary alluvial units are considered to be of high paleontological sensitivity. The Western Science Center does not have localities within the project area, but does have numerous localities within similarly mapped alluvial sediments throughout the region. Pleistocene alluvial deposits in southern California are well documented and known to contain abundant fossil resources including those associated with Columbian mammoth (*Mammuthus columbi*), Pacific mastodon (*Mammuthus pacificus*), sabertooth cat (*Smilodon fatalis*), ancient horse (*Equus* sp.), and many other Pleistocene megafauna.

Any fossils recovered from the BCR Vista Verde Project area would be scientifically significant. Excavation activity associated with development of the area has the potential to impact the paleontologically sensitive Quaternary alluvial units and it is the recommendation of the Western Science Center that a paleontological resource mitigation plan be put in place to monitor, salvage, and curate any recovered fossils associated with the current study area.

If human remains are encountered during any project activities, State Health and Safety Code Section 7050.5 states that no further disturbance shall occur until the County Coroner has made a determination of origin and disposition pursuant to Public Resources Code Section 5097.98. The County Coroner must be notified of the find immediately. If the remains are determined to be prehistoric, the Coroner will notify the NAHC, which will determine and notify a Most Likely Descendant (MLD). With the permission of the landowner or his/her authorized representative, the MLD may inspect the site of the discovery. The MLD shall complete the inspection within 48 hours of notification by the NAHC.

TABLE OF CONTENTS

MANAGEMENT SUMMARY	ii
INTRODUCTION.....	1
PROJECT DESCRIPTION AND LOCATION	1
REGULATORY SETTING	1
NATURAL SETTING	5
GEOLOGY	5
HYDROLOGY	5
BIOLOGY	5
CULTURAL SETTING.....	5
PREHISTORY	5
ETHNOGRAPHY	7
HISTORY	7
PERSONNEL	9
METHODS	9
RESEARCH	9
FIELD SURVEY	9
RESULTS.....	9
RESEARCH	9
FIELD SURVEY	10
RECOMMENDATIONS.....	10
REFERENCES.....	13

FIGURES

1: Project Location Map	2
-------------------------------	---

TABLES

A: Cultural Resources and Reports Within One Mile of the Project Site	10
---	----

APPENDICES

A: RECORDS SEARCH BIBLIOGRAPHY	
B: NATIVE AMERICAN HERITAGE COMMISSION CORRESPONDENCE	
B: PALEONTOLOGICAL RESOURCES OVERVIEW	
C: PROJECT PHOTOGRAPHS	

INTRODUCTION

BCR Consulting LLC (BCR Consulting) is under contract to Guardian Capital to complete a Cultural Resources Assessment of the proposed Vista Verde Project (the project) located in the City of Victorville (City), San Bernardino County, California. A cultural resources records search, intensive-level pedestrian field survey, Native American Heritage Commission (NAHC) Sacred Lands File Search, and vertebrate paleontological resources overview were conducted for the project in partial fulfillment of the California Environmental Quality Act (CEQA).

Project Description and Location

The project site, as identified in this report, will occupy a portion of Section 28, Township 5 North, Range 5 West, San Bernardino Baseline and Meridian. It is depicted on the United States Geological Survey (USGS) *Baldy Mesa* (1988), *California* 7.5-minute topographic quadrangle (Figure 1).

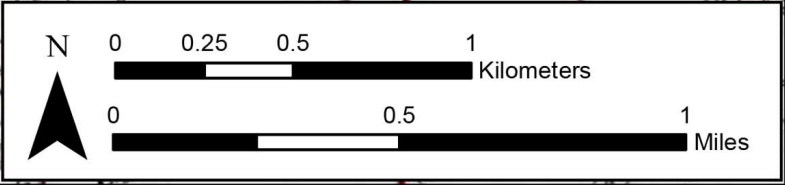
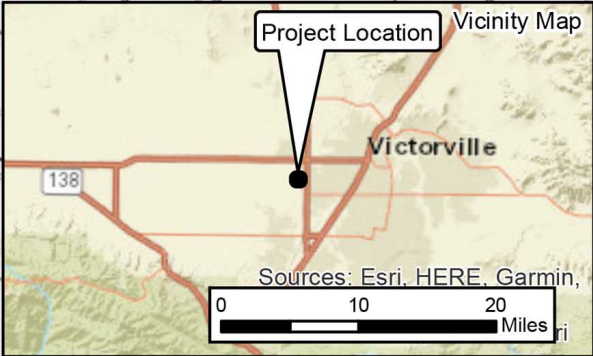
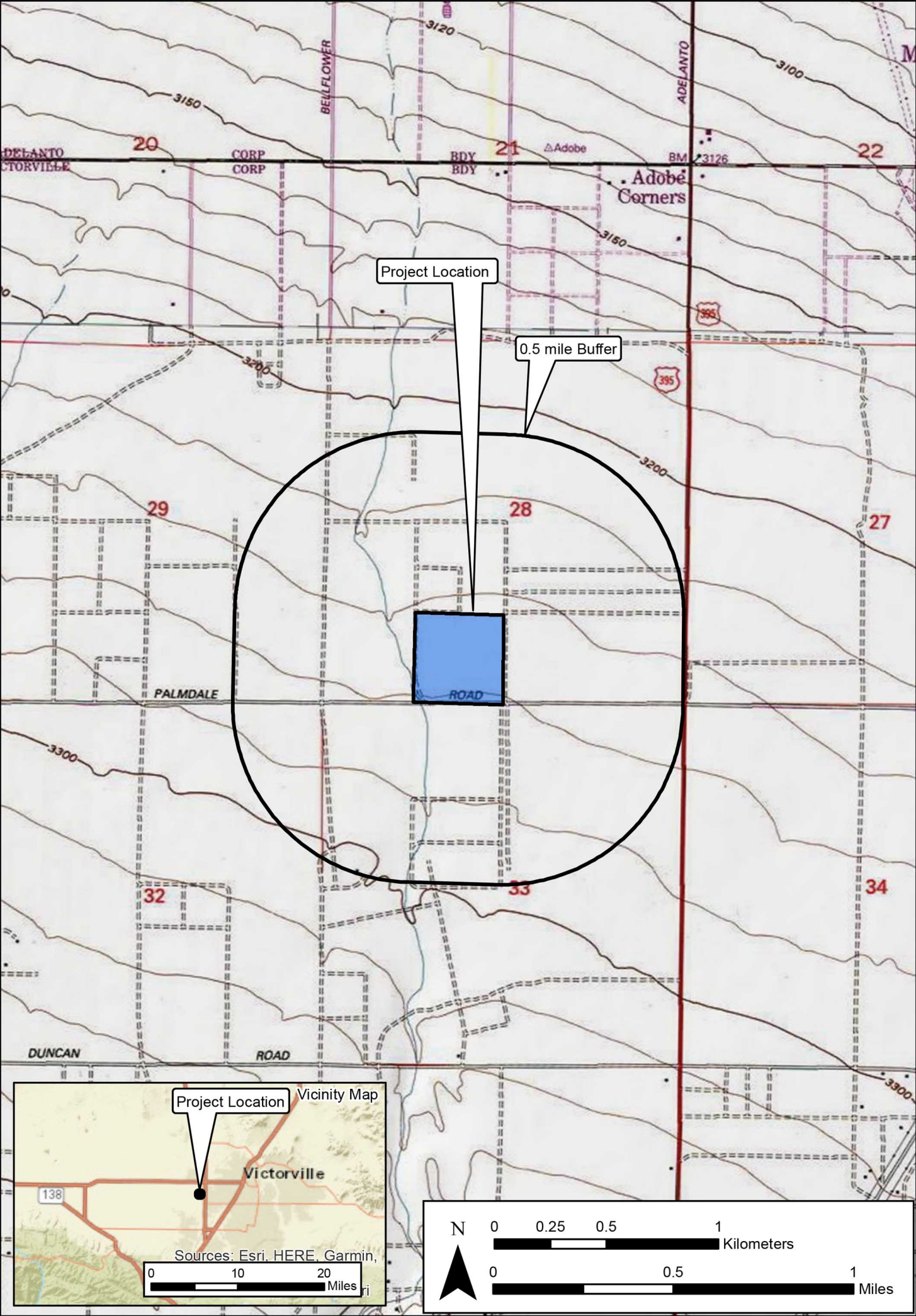
Regulatory Setting

The California Environmental Quality Act. CEQA applies to all discretionary projects undertaken or subject to approval by the state's public agencies (California Code of Regulations 14(3), § 15002(i)). Under CEQA, "A project with an effect that may cause a substantial adverse change in the significance of a historical resource is a project that may have a significant effect on the environment" (Cal. Code Regs. tit. 14(3), § 15064.5(b)). State CEQA Guidelines section 15064.5(a) defines a "historical resource" as a resource that meets one or more of the following criteria:

- Listed in, or eligible for listing in, the California Register of Historical Resources (California Register)
- Listed in a local register of historical resources (as defined at Cal. Public Res. Code § 5020.1(k))
- Identified as significant in a historical resource survey meeting the requirements of § 5024.1(g) of the Cal. Public Res. Code
- Determined to be a historical resource by a project's lead agency (Cal. Code Regs. tit. 14(3), § 15064.5(a))

A historical resource consists of "Any object, building, structure, site, area, place, record, or manuscript which a lead agency determines to be historically significant or significant in the architectural, engineering, scientific, economic, agricultural, educational, social, political, military, or cultural annals of California... Generally, a resource shall be considered by the lead agency to be 'historically significant' if the resource meets the criteria for listing in the California Register of Historical Resources" (Cal. Code Regs. tit. 14(3), § 15064.5(a)(3)).

The significance of a historical resource is impaired when a project demolishes or materially alters in an adverse manner those physical characteristics of a historical resource that convey its historical significance and that justify its eligibility for the California Register. If an



impact on a historical or archaeological resource is significant, CEQA requires feasible measures to minimize the impact (State CEQA Guidelines § 15126.4 (a)(1)). Mitigation of significant impacts must lessen or eliminate the physical impact that the project will have on the resource.

Section 5024.1 of the Cal. Public Res. Code established the California Register. Generally, a resource is considered by the lead agency to be “historically significant” if the resource meets the criteria for listing in the California Register (Cal. Code Regs. tit. 14(3), § 15064.5(a)(3)). The eligibility criteria for the California Register are similar to those of the National Register of Historic Places (National Register), and a resource that meets one or more of the eligibility criteria of the National Register will be eligible for the California Register.

The California Register program encourages public recognition and protection of resources of architectural, historical, archaeological, and cultural significance, identifies historical resources for state and local planning purposes, determines eligibility for state historic preservation grant funding and affords certain protections under CEQA. Criteria for Designation:

1. Associated with events that have made a significant contribution to the broad patterns of local or regional history or the cultural heritage of California or the United States.
2. Associated with the lives of persons important to local, California or national history.
3. Embodies the distinctive characteristics of a type, period, region or method of construction or represents the work of a master or possesses high artistic values.
4. Has yielded, or has the potential to yield, information important to the prehistory or history of the local area, California or the nation.

In addition to meeting one or more of the above criteria, the California Register requires that sufficient time has passed since a resource’s period of significance to “obtain a scholarly perspective on the events or individuals associated with the resources.” (CCR 4852 [d][2]). Fifty years is normally considered sufficient time for a potential historical resource, and in order that the evaluation remain valid for a minimum of five years after the date of this report, all resources older than 45 years (i.e. resources from the “historic-period”) will be evaluated for California Register listing eligibility, or CEQA significance. The California Register also requires that a resource possess integrity. This is defined as the ability for the resource to convey its significance through seven aspects: location, setting, design, materials, workmanship, feeling, and association.

Finally, CEQA requires that significant effects on unique archaeological resources be considered and addressed. CEQA defines a unique archaeological resource as any archaeological artifact, object, or site about which it can be clearly demonstrated that, without merely adding to the current body of knowledge, there is a high probability that it meets any of the following criteria:

1. Contains information needed to answer important scientific research questions and there is a demonstrable public interest in that information.

2. Has a special and particular quality such as being the oldest of its type or the best available example of its type.
3. Is directly associated with a scientifically recognized important prehistoric or historic event or person.

CEQA Guidelines Section 15064.5 Appendix G includes significance criteria relative to archaeological and historical resources. These have been utilized as thresholds of significance here, and a project would have a significant environmental impact if it would:

- a) cause a substantial adverse change in the significance of a historical resource as defined in section 10564.5;
- b) Cause a substantial adverse change in the significance of an archaeological resource pursuant to Section 10564.5;
- c) Disturb any human remains, including those interred outside of formal cemeteries.

Tribal Cultural Resources. The Legislature added requirements regarding tribal cultural resources for CEQA in Assembly Bill 52 (AB 52) that took effect July 1, 2015. AB 52 requires consultation with California Native American tribes and consideration of tribal cultural resources in the CEQA process. By including tribal cultural resources early in the CEQA process, the legislature intended to ensure that local and Tribal governments, public agencies, and project proponents would have information available, early in the project planning process, to identify and address potential adverse impacts to tribal cultural resources. By taking this proactive approach, the legislature also intended to reduce the potential for delay and conflicts in the environmental review process. To help determine whether a project may have such an effect, the Public Resources Code requires a lead agency to consult with any California Native American tribe that requests consultation and is traditionally and culturally affiliated with the geographic area of a Proposed Project. Since the City will initiate and carry out the required AB52 Native American Consultation, the results of the consultation are not provided in this report. However, this report may be used during the consultation process, and BCR Consulting staff are available to answer questions and address comments as necessary.

Paleontological Resources. CEQA provides guidance relative to significant impacts on paleontological resources, indicating that a project would have a significant impact on paleontological resources if it disturbs or destroys a unique paleontological resource or site or unique geologic feature. Section 5097.5 of the California Public Resources Code specifies that any unauthorized removal of paleontological remains is a misdemeanor. Further, California Penal Code Section 622.5 sets the penalties for damage or removal of paleontological resources. CEQA documentation prepared for projects would be required to analyze paleontological resources as a condition of the CEQA process to disclose potential impacts. Please note that as of January 2018 paleontological resources are considered in the geological rather than cultural category. Therefore, paleontological resources are not summarized in the body of this report. A paleontological overview completed by the Western Science Center is provided as Appendix C.

NATURAL SETTING

Geology

The project is located in the southwestern portion of the Mojave Desert. Sediments within the project boundaries include a geologic unit composed of surficial alluvial sand of the late Holocene (Dibblee 2008). The units are composed of “slightly consolidated, undissected to slightly dissected deposits of poorly sorted sand and silt containing scattered subangular pebbles” (Miller and Matti 2006). Field observations during the current study are basically consistent with these descriptions, and are described further in Results, below.

Hydrology

The project elevation is approximately 3,264 feet above mean sea level (AMSL). Sheetwashing and some rilling occur from south to north and water drains from the project site to an unnamed drainage to the west which eventually empties into the Mojave River approximately seven miles to the northeast. To the south, the peaks of the San Gabriel Mountains rise above 10,000 feet and are often capped with snow until late spring or early summer. The area currently exhibits a relatively arid climate, with dry, hot summers and cool winters. Rainfall ranges from five to 15 inches annually (Jaeger and Smith 1971:36-37). Precipitation usually occurs in the form of winter and spring rain or snow at high elevations, with occasional warm monsoonal showers in late summer.

Biology

The mild climate of the late Pleistocene allowed piñon-juniper woodland to thrive throughout most of the Mojave (Van Devender et al. 1987). The vegetation and climate during this epoch attracted significant numbers of Rancholabrean fauna, including dire wolf, saber toothed cat, short-faced bear, horse, camel, antelope, mammoth, as well as birds which included pelican, goose, duck, cormorant, and eagle (Reynolds 1988). The drier climate of the middle Holocene resulted in the local development of complementary flora and fauna, which remain largely intact to this day. Common native plants include creosote, cacti, rabbit bush, interior golden bush, cheese bush, species of sage, buckwheat at higher elevations and near drainages, Joshua tree, and various grasses. Common native animals include coyotes, cottontail and jackrabbits, rats, mice, desert tortoises, roadrunners, raptors, turkey vultures, and other bird species (see Williams et al. 2008).

CULTURAL SETTING

Prehistory

The prehistoric cultural setting of the Mojave Desert has been organized into many chronological frameworks (see Warren and Crabtree 1986; Bettinger and Taylor 1974; Lanning 1963; Hunt 1960; Wallace 1958, 1962, 1977; Wallace and Taylor 1978; Campbell and Campbell 1935), although there is no definitive sequence for the region. The difficulties in establishing cultural chronologies for the Mojave are a function of its enormous size and the small amount of archaeological excavations conducted there. Moreover, throughout prehistory many groups have occupied the Mojave and their territories often overlap spatially and chronologically resulting in mixed artifact deposits. Due to dry climate and capricious geological processes, these artifacts rarely become integrated in-situ. Lacking a milieu hospitable to the preservation of cultural midden, Mojave chronologies have relied upon

temporally diagnostic artifacts, such as projectile points, or upon the presence/absence of other temporal indicators, such as groundstone. Such methods are instructive, but can be limited by prehistoric occupants' concurrent use of different artifact styles, or by artifact re-use or re-sharpening, as well as researchers' mistaken diagnosis, and other factors (see Flenniken 1985; Flenniken and Raymond 1986; Flenniken and Wilke 1989). Recognizing the shortcomings of comparative temporal indicators, this study synthesizes Warren and Crabtree (1986), who have drawn upon this method to produce a commonly cited and relatively comprehensive chronology.

Paleoindian (12,000 to 10,000 BP) and Lake Mojave (10,000 to 7,000 BP) Periods. Climatic warming characterizes the transition from the Paleoindian Period to the Lake Mojave Period. This transition also marks the end of Pleistocene Epoch and ushers in the Holocene. The Paleoindian Period has been loosely defined by isolated fluted (such as Clovis) projectile points, dated by their association with similar artifacts discovered in-situ in the Great Plains (Sutton 1996:227-228). Some fluted bifaces have been associated with fossil remains of Rancholabrean mammals approximately dated to ca. 13,300-10,800 BP near China Lake in the northern Mojave Desert. The Lake Mojave Period has been associated with cultural adaptations to moist conditions, and resource allocation pointing to more lacustrine environments than previously (Bedwell 1973; Hester 1973). Artifacts that characterize this period include stemmed points, flake and core scrapers, choppers, hammerstones, and crescentics (Warren and Crabtree 1986:184). Projectile points associated with the period include the Silver Lake and Lake Mojave styles. Lake Mojave sites commonly occur on shorelines of Pleistocene lakes and streams, where geological surfaces of that epoch have been identified (Basgall and Hall 1994:69).

Pinto Period (7,000 to 4,000 BP). The Pinto Period has been largely characterized by desiccation of the Mojave. As formerly rich lacustrine environments began to disappear, the artifact record reveals more sporadic occupation of the Mojave, indicating occupants' recession to the more hospitable fringes (Warren 1984). Pinto Period sites are rare, and are characterized by surface manifestations that usually lack significant in-situ remains. Artifacts from this era include Pinto projectile points and a flake industry similar to the Lake Mojave tool complex (Warren 1984), though use of Pinto projectile points as an index artifact for the era has been disputed (see Schroth 1994). Milling stones have also occasionally been associated with sites of this period (Warren 1984).

Gypsum Period. (4,000 to 1,500 BP). A temporary return to moister conditions during the Gypsum Period is postulated to have encouraged technological diversification afforded by the relative abundance of resources (Warren 1984:419-420; Warren and Crabtree 1986:189). Lacustrine environments reappear and begin to be exploited during this era (Shutler 1961, 1968). Concurrently a more diverse artifact assemblage reflects intensified reliance on plant resources. The new artifacts include milling stones, mortars, pestles, and a proliferation of Humboldt Concave Base, Gypsum Cave, Elko Eared, and Elko Corner-notched dart points (Warren 1984; Warren and Crabtree 1986). Other artifacts include leaf-shaped projectile points, rectangular-based knives, drills, large scraper planes, choppers, hammer stones, shaft straighteners, incised stone pendants, and drilled slate tubes. The bow and arrow appears around 2,000 BP, evidenced by the presence of a smaller type of projectile point, the Rose Spring point (Rogers 1939; Shutler 1961).

Saratoga Springs Period (1,500 to 800 BP). During the Saratoga Springs Period regional cultural diversifications of Gypsum Period developments are evident within the Mojave.

Basketmaker III (Anasazi) pottery appears during this period, and has been associated with turquoise mining in the eastern Mojave Desert (Warren and Crabtree 1986:191). Influences from Patayan/Yuman assemblages are apparent in the southern Mojave, and include buff and brown wares often associated with Cottonwood and Desert Side-notched projectile points (Warren 1984:423). Obsidian becomes more commonly used throughout the Mojave and characteristic artifacts of the period include milling stones, mortars, pestles, ceramics, and ornamental and ritual objects. More structured settlement patterns are evidenced by the presence of large villages, and three types of identifiable archaeological sites (major habitation, temporary camps, and processing stations) emerge (McGuire and Hall 1988). Diversity of resource exploitation continues to expand, indicating a much more generalized, somewhat less mobile subsistence strategy.

Shoshonean Period (800 BP to Contact). The Shoshonean period is the first to benefit from contact-era ethnography –as well as be subject to its inherent biases. Interviews of living informants allowed anthropologists to match artifact assemblages and particular traditions with linguistic groups, and plot them geographically (see Kroeber 1925; Gifford 1918; Strong 1929). During the Shoshonean Period continued diversification of site assemblages, and reduced Anasazi influence both coincide with the expansion of Numic (Uto-Aztecan language family) speakers across the Great Basin, Takic (Uto-Aztecan language family) speakers into southern California, and the Hopi across the Southwest (Sutton 1996). Hunting and gathering continued to diversify, and the diagnostic arrow points include desert side-notch and cottonwood triangular. Ceramics continue to proliferate, though are more common in the southern Mojave during this period (Warren and Crabtree 1986). Trade routes have become well established across the Mojave, particularly the Mojave Trail, which transported goods and news across the desert via the Mojave River, to the west of the current project. Trade in the western Mojave was more closely related to coastal groups than others.

Ethnography

The Uto-Aztecan “Serrano” people occupied the western Mojave Desert periphery. Kroeber (1925) applied the generic term “Serrano” to four groups, each with distinct territories: the Kitanemuk, Tataviam, Vanyume, and Serrano. Only one group, in the San Bernardino Mountains and West-Central Mojave Desert, ethnically claims the term Serrano. Bean and Smith (1978) indicate that the Vanyume, an obscure Takic population, was found along the Mojave River at the time of Spanish contact. The Kitanemuk lived to the north and west, while the Tataviam lived to the west. The Serrano lived mainly to the south (Bean and Smith 1978). All may have used the western Mojave area seasonally. Historical records are unclear concerning precise territory and village locations. It is doubtful that any group, except the Vanyume, actually lived in the region for several seasons yearly.

History

Historic-era California is generally divided into three periods: the Spanish or Mission Period (1769 to 1821), the Mexican or Rancho Period (1821 to 1848), and the American Period (1848 to present).

Spanish Period. The first European to pass through the project area is thought to be a Spaniard called Father Francisco Garcés. Having become familiar with the area, Garcés acted as a guide to Juan Bautista de Anza, who had been commissioned to lead a group across the desert from a Spanish outpost in Arizona to set up quarters at the Mission San Gabriel in 1771 near what today is Pasadena (Beck and Haase 1974). This is the first recorded group crossing

of the Mojave Desert and, according to Father Garces' journal, they camped at the headwaters of the Mojave River, one night less than a day's march from the mountains. Today, this is estimated to have been approximately 11 miles southeast of Victorville (Marenczuk 1962). Garces was followed by Alta California Governor Pedro Fages, who briefly explored the western Mojave region in 1772. Searching for San Diego Presidio deserters, Fages had traveled north through Riverside to San Bernardino, crossed over the mountains into the Mojave Desert, and then journeyed westward to the San Joaquin Valley (Beck and Haase 1974).

Mexican Period. In 1821, Mexico overthrew Spanish rule and the missions began to decline. By 1833, the Mexican government passed the Secularization Act, and the missions, reorganized as parish churches, lost their vast land holdings, and released their neophytes (Beattie and Beattie 1974).

American Period. The American Period, 1848–Present, began with the Treaty of Guadalupe Hidalgo. The Gold Rush had attracted huge numbers of American settlers and in 1850, California was accepted into the Union. The cattle industry reached its greatest prosperity during the first years of the American Period. Mexican Period land grants had created large pastoral estates in California, and demand for beef during the Gold Rush led to a cattle boom that lasted from 1849–1855. However, beginning about 1855, the demand for beef began to decline due to imports of sheep and cattle from the eastern U.S. When the beef market collapsed, many California ranchers lost their ranchos. A series of disastrous floods in 1861–1862, followed by a significant drought diminished the economic impact of local ranching. This decline combined with ubiquitous agricultural and real estate developments of the late 19th century, set the stage for diversified economic pursuits that have continued to proliferate to this day (Beattie and Beattie 1974; Cleland 1941).

Local Sequence. The city of Victorville, located in Victor Valley, was first settled in 1858 by Ex-army captain Aaron G Lane during a mass exodus of Mormons from San Bernardino back to Utah. Lane set up a ranch on the west bank of the Mojave River which became a popular stop for travelers coming through the area (Marenczuk 1962; Gutglueck 2015a). The railway connecting San Bernardino and Barstow, which traveled through present day Victorville, was completed in 1884. The completion of the railway brought many travelers through the town and allowed mining in the area, which was already known for its rich silver and gold mines, to flourish and expand into granite, limestone, and marble (Gutglueck 2015a). The town of Victor, later to be renamed Victorville, was founded in 1885 and named for Jacob N Victor, a general manager of operations for the California Southern Railroad, a subsidiary of the Atchison, Topeka and Santa Fe Railway who were responsible for the newly constructed railway (Gudde 1962; Wallenfeldt 2020).

The town's name was changed to Victorville in 1904 because many were confusing the town for another of the same name in Colorado (Wallenfeldt 2020; Gutglueck 2015b). Population, commerce, and development continued growing throughout the early 20th century and the town established the Victorville Chamber of Commerce in 1911 in response. The first high school in Victorville was opened in 1914 and cement plants were being opened throughout the larger area during the initial few decades of the 20th century. The Mojave River provided relatively plentiful water, which allowed local agriculture to flourish alongside mining operations until its decline in 1972 (Nordyke 1974). Canals distributed runoff water for farms near the river (Turner and Presswood 1963:86), and a shallow water table encouraged well

drilling for various remote agricultural endeavors. Local crops included alfalfa, onions, watermelon, cantaloupe, non-citrus fruits, and other produce (Marenczuk 1962; Turner and Presswood 1963:86). Farming, mining, cement manufacturing, and business brought in by travelers, continued to be one of the main drivers of Victorville's budding economy throughout much of the 20th century. George Air Force Base, initially named Victorville Air Base, was completed in 1943 in response to World War II (Colton Courier 1943). It was later renamed George Air Force Base and was decommissioned in 1992. The former air base is now the Southern California Logistics Airport and is used mainly for business, military, and freight use (Wallenfeldt 2020).

PERSONNEL

David Brunzell, M.A., RPA acted as the Project Manager/Principal Investigator for the current study, and authored the technical report with contributions from BCR Consulting Archaeological Crew Chief Nicholas Shepetuk, B.A. The South Central Coastal Information Center (SCCIC) at California State University, Fullerton completed the record search. Mr. Shepetuk and BCR Consulting Staff Historian and Archaeological Field Technician George Brentner, B.A., carried out the pedestrian field survey.

METHODS

Research

South Central Coastal Information Center (SCCIC) staff completed an archaeological records search using SCCIC records of California State University, Fullerton. This archival research reviewed the status of all recorded historic and prehistoric cultural resources, and survey and excavation reports completed within 0.5-mile of the current project. Additional resources reviewed included the National Register of Historic Places (National Register), the California Register, the Built Environmental Resource Directory (BERD), and documents and inventories published by the California Office of Historic Preservation. These include the lists of California Historical Landmarks, California Points of Historical Interest, Listing of National Register Properties, and the Inventory of Historic Structures.

Field Survey

An intensive-level cultural resources field survey of the project site was conducted on October 21, 2021. The survey was conducted by walking parallel transects spaced approximately 15 meters apart across the project site. Digital photographs were taken at various points within the project site.

RESULTS

Research

Data from the South Central Coastal Information Center (SCCIC) revealed that nine previous cultural resource studies have taken place, and seven cultural resources have been identified within 0.5-miles of the project site. None of the previous studies have assessed the project site and no cultural resources have been identified within its boundaries. Detailed bibliographic information and a records search map are provided as Appendix A. The records search is summarized as follows:

Table A. Cultural Resources and Reports Within One Mile of the Project Site

USGS Quad	Cultural Resources	Studies
<i>Baldy Mesa</i> (1988), <i>California</i>	P-36-10504: Historic-Period Refuse and Wall (0.5-mile E) P-36-20314: Historic-Period Refuse (0.25-mile E) P-36-20315: Historic-Period Refuse (0.3-mile S) P-36-20316: Historic-Period Refuse (0.2-mile S) P-36-33188: Historic-Period Refuse (0.2-mile NE) P-36-33189: Historic-Period Refuse (0.2-mile NE) P-36-64401: Isolated Prehistoric Lithic Flake (0.3-mile NE)	SB-3898, 4307, 4308, 4473, 4799, 4800, 5235, 5915, 7960

Field Survey

During the field survey, BCR Consulting archaeologists did not identify any cultural resources (prehistoric or historic-period archaeological sites, or historic-period architectural resources) within the project site boundaries. The project has been subject to artificial disturbances associated with modern refuse dumping and adjacent street and residential property construction. Most of the project site is covered with dry, yellowish-brown sandy silt with a moderate amount of subangular gravel. Vegetation consists of Joshua tree woodland and creosote scrub. Visibility in the project site was approximately 90 percent.

RECOMMENDATIONS

BCR Consulting conducted an intensive-level survey of the Vista Verde Project in the City of Victorville, San Bernardino County, California. No cultural resources of any kind were identified within or adjacent to the project site. Therefore, no significant impact related to historical resources is anticipated and no further investigations are recommended unless:

- The proposed project is changed to include areas that have not been subject to this cultural resource assessment;
- Cultural materials are encountered during project activities.

The current study attempted to determine whether significant archaeological deposits were present on the proposed project site. Although none were yielded during the records search and field survey, ground-disturbing activities have the potential to reveal buried deposits not observed on the surface. Prior to the initiation of ground-disturbing activities, field personnel should be alerted to the possibility of buried prehistoric or historic cultural deposits. In the event that field personnel encounter buried cultural materials, work in the immediate vicinity of the find should cease and a qualified archaeologist should be retained to assess the significance of the find. The qualified archaeologist shall have the authority to stop or divert construction excavation as necessary. If the qualified archaeologist finds that any cultural resources present meet eligibility requirements for listing on the California Register or the National Register of Historic Places (National Register), plans for the treatment, evaluation, and mitigation of impacts to the find will need to be developed. Prehistoric or historic cultural materials that may be encountered during ground-disturbing activities include:

- historic-period artifacts such as glass bottles and fragments, cans, nails, ceramic and pottery fragments, and other metal objects;

- historic-period structural or building foundations, walkways, cisterns, pipes, privies, and other structural elements;
- prehistoric flaked-stone artifacts and debitage (waste material), consisting of obsidian, basalt, and or cryptocrystalline silicates;
- groundstone artifacts, including mortars, pestles, and grinding slabs;
- dark, greasy soil that may be associated with charcoal, ash, bone, shell, flaked stone, groundstone, and fire affected rocks;
- human remains.

Findings were negative during the Sacred Lands File search with the NAHC. The results of the Sacred Lands File search are provided in Appendix B. The Legislature added requirements regarding tribal cultural resources for CEQA in Assembly Bill 52 (AB 52) that took effect July 1, 2015. AB 52 requires consultation with California Native American tribes and consideration of tribal cultural resources in the CEQA process. By including tribal cultural resources early in the CEQA process, the legislature intended to ensure that local and Tribal governments, public agencies, and project proponents would have information available, early in the project planning process, to identify and address potential adverse impacts to tribal cultural resources. By taking this proactive approach, the legislature also intended to reduce the potential for delay and conflicts in the environmental review process. To help determine whether a project may have such an effect, the Public Resources Code requires a lead agency to consult with any California Native American tribe that requests consultation and is traditionally and culturally affiliated with the geographic area of a Proposed Project. Since the City will initiate and carry out the required AB52 Native American Consultation, the results of the consultation are not provided in this report. However, this report may be used during the consultation process, and BCR Consulting staff is available to answer questions and address concerns as necessary.

According to CEQA Guidelines, projects subject to CEQA must determine whether the project would “directly or indirectly destroy a unique paleontological resource”. The appended Paleontological Overview provided in Appendix B has recommended that:

The geologic units underlying the project area are mapped as Quaternary alluvium dating to the Pliocene-Holocene, which is potentially fossiliferous. Quaternary alluvial units are considered to be of high paleontological sensitivity. The Western Science Center does not have localities within the project area, but does have numerous localities within similarly mapped alluvial sediments throughout the region. Pleistocene alluvial deposits in southern California are well documented and known to contain abundant fossil resources including those associated with Columbian mammoth (*Mammuthus columbi*), Pacific mastodon (*Mammut pacificus*), sabertooth cat (*Smilodon fatalis*), ancient horse (*Equus* sp.), and many other Pleistocene megafauna.

Any fossils recovered from the BCR Vista Verde Project area would be scientifically significant. Excavation activity associated with development of the area has the potential to impact the paleontologically sensitive Quaternary alluvial units and it is the recommendation of the Western Science Center that a paleontological resource mitigation plan be put in place to monitor, salvage, and curate any recovered fossils associated with the current study area.

If human remains are encountered, State Health and Safety Code Section 7050.5 states that no further disturbance shall occur until the County Coroner has made a determination of origin and disposition pursuant to PRC Section 5097.98. The County Coroner must be notified of the find immediately. If the remains are determined to be prehistoric, the Coroner will notify the NAHC, which will determine and notify a Most Likely Descendant (MLD). With the permission of the landowner or his/her authorized representative, the MLD may inspect the site of the discovery. The MLD shall complete the inspection within 48 hours of notification by the NAHC.

REFERENCES

- Basgall, Mark E., and M.C. Hall
1994 Perspectives on the Early Holocene Archaeological Record of the Mojave Desert. In *Kelso Conference Papers 1987-1992*, edited by G.D. Everson and J.S. Schneider.
- Bean, Lowell John, and Charles R. Smith
1978 *California*, edited by R.F. Heizer. Handbook of North American Indians, Vol. 8, W.C. Sturtevant, general editor, Smithsonian Institution, Washington, D.C.
- Beattie, George W., and Helen P. Beattie
1974 *Heritage of the Valley: San Bernardino's First Century*. Biobooks: Oakland.
- Beck, Warren A., and Ynez D. Haase
1974 *Historical Atlas of California*. Oklahoma City: University of Oklahoma Press.
- Bedwell, S.F.
1973 *Fort Rock Basin: Prehistory and Environment*. University of Oregon Books, Eugene.
- Bettinger, Robert L., and R.E. Taylor
1974 Suggested Revisions in Archaeological Sequences of the Great Basin and Interior Southern California. *Nevada Archaeological Survey Research Papers* 3:1-26.
- Campbell, E., and W. Campbell
1935 The Pinto Basin. *Southwest Museum Papers* 9:1-51.
- Cleland, Robert Glass
1941 *The Cattle on a Thousand Hills—Southern California, 1850-80*. San Marino, California: Huntington Library.
- Colton Courier
1943 Victorville Army Air Base Talent On Radio Jan. 22. *The Colton Courier* 15 January: Page 6. Colton, California.
- Dibblee, Thomas W.
2008 Geologic Map of the Hesperia 15 Minute Quadrangle, San Bernardino County, California. Santa Barbara Museum of Natural History.
- Flenniken, J.J.
1985 Stone Tool Reduction Techniques as Cultural Markers. *Stone Tool Analysis: Essays in Honor of Don E. Crabtree*, edited by M.G. Plew, J.C. Woods, and M.G. Pavesic. University of New Mexico Press, Albuquerque.
- Flenniken, J.J. and A.W. Raymond
1986 Morphological Projectile Point Typology: Replication, Experimentation, and Technological Analysis. *American Antiquity* 51:603-614.
- Flenniken, J.J. and Philip J. Wilke
1989 Typology, Technology, and Chronology of Great Basin Dart Points. *American Anthropologist* 91:149-158.

- Gifford, Edward W.
1918 Clans and Moieties in Southern California. *University of California Publications in American Archaeology and Anthropology* 14(22):155-219.
- Gutglueck, Mark
2015a Victor Valley History 1856 – 1888. *San Bernardino County Sentinel* 11 September. San Bernardino, California.

2015b Victor Valley History 1889 – 1913. *San Bernardino County Sentinel* 29 August. San Bernardino, California.
- Hester, T.R.
1973 *Chronological Ordering of Great Basin Prehistory*. Contributions of the Archaeological Research Facility 17, University of California, Berkeley.
- Hunt, Alice P.
1960 *The Archaeology of the Death Valley Salt Pan, California*. University of Utah Anthropological Papers No. 47.
- Jaeger, Edmund C., and Arthur C. Smith
1971 *Introduction to the Natural History of Southern California*. California Natural History Guides: 13. Los Angeles: University of California Press.
- Kroeber, Alfred L.
1925 *Handbook of the Indians of California*. Bureau of American Ethnology Bulletin 78. Washington D.C.: Smithsonian Institution. Reprinted in 1976, New York: Dover.
- Lambert, David
1994 *The Field Guide to Prehistoric Life*. Diagram Visual Information Ltd., New York.
- Lanning, Edward P.
1963 The Archaeology of the Rose Spring Site (Iny-372). *University of California Publications in American Archaeology and Ethnology* 49(3):237-336.
- Marenczuk, Wesley
1962 *The Story of Oro Grande*. Published by Author. Victor Valley College.
- McGuire, K.R., and M.C. Hall
1988 *The Archaeology of Tiefert Basin, Fort Irwin, San Bernardino County, California*. Prepared for the U.S. Army Corps of Engineers, Los Angeles District.
- Miller Fred K. and Jonathan C. Matti
2006 *Geologic Map of the San Bernardino and Santa Ana 30' x 60' Quadrangles, California*. U.S. Geological Survey, Spokane and Tucson. Reynolds, R.E.
- Reynolds, R.E.
1988 *Paleontologic Resource Overview and Management Plan for Edwards Air Force Base, California*. San Bernardino County Museum, Redlands, California.
- Rogers, M.J.
1939 *Early Lithic Industries of the Lower Basin of the Colorado River and Adjacent Desert*

Areas. San Diego Museum Papers No. 3.

Schroth, Adella Beverly

- 1994 *The Pinto Point Controversy in the Western United States*. Unpublished PhD Dissertation, University of California, Riverside.

Shutler, Richard, Jr.

- 1961 *Lost City, Pueblo Grande de Nevada*. NV State Museum Anthropological Papers 5.

- 1968 The Great Basin Archaic. In *Prehistory in the Western United States. Contributions in Anthropology* 1(3):24-26. Edited by C. Irwin-Williams, Eastern New Mexico Univ.

Strong, William Duncan

- 1929 Aboriginal Society in Southern California. *University of California Publications in American Archaeology and Ethnology* 26(1):1-358.

Sutton, Mark Q.

- 1996 The Current Status of Archaeological Research in the Mojave Desert. *Journal of California and Great Basin Anthropology* 18(2):221-257.

United States Geological Survey

- 1988 *Baldy Mesa, California* 7.5-minute topographic quadrangle map.

Van Devender, Larry M., Gary L. Shumway, and Russell D. Hartill

- 1987 *Desert Fever: An Overview of Mining in the California Desert*. Living West Press, Canoga Park, California.

Wallace, William J.

- 1958 Archaeological Investigation in Death Valley National Monument. *University of California Archaeological Survey Reports* 42:7-22.

- 1962 Prehistoric Cultural Development in the Southern California Deserts. *American Antiquity* 28(2):172-180.

- 1977 A Half Century of Death Valley Archaeology. *The Journal of California Anthropology* 4(2):249-258.

Wallace, William J., and Edith S. Taylor

- 1978 *Ancient Peoples and Cultures of Death Valley National Monument*. Acoma Books, Ramona, California.

Wallenfeldt, Jeff

- 2020 *Victorville California, United States*. Encyclopedia Britannica, Inc. Edinburgh, Scotland.

Warren, Claude N.

- 1984 The Desert Region. In *California Archaeology*, by M. Moratto, contributions by D.A. Fredrickson, C. Raven, and C.N. Warren, pp. 339–430. Academic Press, Orlando, Florida.

Warren, Claude N., and R.H. Crabtree

1986 The Prehistory of the Southwestern Great Basin. In *Handbook of the North American Indians, Vol. 11, Great Basin*, edited by W.L. d'Azevedo, pp.183-193. W.C. Sturtevant, General Editor. Smithsonian Institution, Washington D.C.

Williams, Patricia, Leah Messinger, Sarah Johnson

2008 *Habitats Alive! An Ecological Guide to California's Diverse Habitats*. California Institute for Biodiversity, Claremont, California.

APPENDIX A

CULTURAL RESOURCES RECORDS SEARCH BIBLIOGRAPHY

Report List

Report No.	Other IDs	Year	Author(s)	Title	Affiliation	Resources
SB-03898	NADB-R - 1063898	2001	DICE, MICHAEL	A PHASE I ARCHAEOLOGICAL SURVEY AND PALEONTOLOGICAL RECORD SEARCH OF THE VV800 RESIDENTIAL PROJECT, TRACTS 16107 & 16138, CITY OF VICTORVILLE, CA. 33PP	L&L ENVIRONMENTAL	36-064401
SB-04307	NADB-R - 1064307	2004	CERRETO, RICHARD, CHRISTY MALAN, and KATHERINE WARD	CULTURAL RESOURCE ASSESSMENT FOR TENTATIVE TRACT NO. 16856, CITY OF VICTORVILLE, SAN BERNARDINO COUNTY, CA. 20PP	ANALYTIC ARCHAEOLOGY	36-010504
SB-04308	NADB-R - 1064308	2004	CERRETO, RICHARD, CHRISTY MALAN, and KATHERINE WARD	CULTURAL RESOURCE ASSESSMENT FOR TENTATIVE TRACT NO. 16853, CITY OF VICTORVILLE, SAN BERNARDINO COUNTY, CA. 14PP	ANALYTIC ARCHAEOLOGY	
SB-04473	NADB-R - 1064473	2004	HOGAN, MICHAEL	ARCHAEOLOGICAL/PALEONTOLOGICAL MONITORING OF EARTH-MOVING ACTIVITIES: THE VICTORVILLE 800 PROJECT; TRACT NO. 16138-4, CITY OF VICTORVILLE, SAN BERNARDINO COUNTY, CA. 4PP	CRM TECH	
SB-04799	NADB-R - 1064799	2005	HOGAN, MICHAEL	ARCHAEOLOGICAL/PALEONTOLOGY MONITORING OF EARTH-MOVING ACTIVITIES TRACT NO. 16853 CITY OF VICTORVILLE, SAN BERNARDINO COUNTY, CALIFORNIA CRM TECH CONTRACT NO. 1647		
SB-04800	NADB-R - 1064800	2004	IRISH, LESLIE NAY, HOOVER, ANNA M., and KRISTIE BLEVINS	AN ARCHAEOLOGICAL AND PALEONTOLOGICAL MITIGATION-MONITORING REPORT FOR VICTORVILLE 800, TRACT 16107 AND TRACT 16138 PHASES 1 THROUGH 3, CITY OF VICTORVILLE, SAN BERNARDINO COUNTY, CALIFORNIA		
SB-05235	NADB-R - 1065235	2005	Malan, Christy and Richard Cerreto	Cultural Resources Monitoring for "Montecito Pointe, LLC" Project, Tract 16856, City of Victorville, San Bernardino County, California.	Analytic Archaeology	36-010504
SB-05915		2007	McKenna, Jeanette	A Phase I Cultural Resource Investigation of the Proposed Snowline Joint Unified School District Elementary and Middle School Site in the City of Victorville, San Bernardino County, California	McKenna et al	36-004418, 36-006441, 36-012058, 36-020314, 36-020315, 36-020316

Report List

Report No.	Other IDs	Year	Author(s)	Title	Affiliation	Resources
SB-07960		2010	Self, William	Class III Cultural Resources Survey Addendum for the Proposed Calnev Expansion Project, California Portion San Bernadino County, California	William Self Associates, Inc.	36-000827, 36-000828, 36-003731, 36-005351, 36-006109, 36-006117, 36-006506, 36-006693, 36-006699, 36-006708, 36-007091, 36-007309, 36-007371, 36-008127, 36-008131, 36-008133, 36-008544, 36-008857, 36-010148, 36-010317, 36-012335, 36-013632, 36-015497, 36-020321, 36-020324, 36-020325, 36-020326, 36-020327, 36-020328, 36-020329, 36-020330, 36-022659, 36-022660, 36-022661, 36-022662, 36-022663, 36-022664

All listed resources have been previously verified by SCCIC staff.

Resource List

Primary No.	Trinomial	Other IDs	Type	Age	Attribute codes	Recorded by	Reports
P-36-010504	CA-SBR-010504H	Resource Name - TS-1, FS9; SWCA Project #3315-1385	Structure	Historic	AH04; AH11	1999 (McDONALD+BARNETT, SWCA); 2004 (R. Cerreto, Analytic Archaeology)	SB-04307, SB-05235
P-36-020314		Resource Name - LSA-BEH434-I- 1	Other	Historic	AH04	2004 (Riordan Goodwin, LSA)	SB-05915
P-36-020315		Resource Name - LSA-BEH434-I- 2	Other	Historic	AH04	2004 (Riordan Goodwin, LSA)	SB-05915
P-36-020316		Resource Name - LSA-BEH434-I- 3	Other	Historic	AH04	2004 (Riordan Goodwin, LSA)	SB-05915
P-36-033188		Resource Name - 2019_04_15_TJT-01	Other	Historic	AH04	2019 (Teresa Terry, Cogstone)	
P-36-033189		Resource Name - 2019_04_15_TJT-02	Other	Historic	AH04	2019 (Teresa Terry, Cogstone)	
P-36-064401		Resource Name - V1; flake	Other	Prehistoric	AP02	2001 (Michael Dice, L&L)	SB-03898

APPENDIX B

NATIVE AMERICAN HERITAGE COMMISSION CORRESPONDENCE

**NATIVE AMERICAN HERITAGE COMMISSION**

October 5, 2021

Fabian Reyes-Martinez
BCR Consulting LLCVia Email to: freyesma@ucsc.eduCHAIRPERSON
Laura Miranda
LuiseñoVICE CHAIRPERSON
Reginald Pagaling
ChumashSECRETARY
Merri Lopez-Keifer
LuiseñoPARLIAMENTARIAN
Russell Attebery
KarukCOMMISSIONER
William Mungary
Paiute/White Mountain
ApacheCOMMISSIONER
Julie Tumamait-Stenslie
ChumashCOMMISSIONER
[Vacant]COMMISSIONER
[Vacant]COMMISSIONER
[Vacant]EXECUTIVE SECRETARY
Christina Snider
Pomo**NAHC HEADQUARTERS**
1550 Harbor Boulevard
Suite 100
West Sacramento,
California 95691
(916) 373-3710
nahc@nahc.ca.gov
NAHC.ca.gov

Re: Native American Tribal Consultation, Pursuant to the Assembly Bill 52 (AB 52), Amendments to the California Environmental Quality Act (CEQA) (Chapter 532, Statutes of 2014), Public Resources Code Sections 5097.94 (m), 21073, 21074, 21080.3.1, 21080.3.2, 21082.3, 21083.09, 21084.2 and 21084.3, Vista Verde Project, San Bernardino County

Dear Mr. Reyes-Martinez:

Pursuant to Public Resources Code section 21080.3.1 (c), attached is a consultation list of tribes that are traditionally and culturally affiliated with the geographic area of the above-listed project. Please note that the intent of the AB 52 amendments to CEQA is to avoid and/or mitigate impacts to tribal cultural resources, (Pub. Resources Code §21084.3 (a)) ("Public agencies shall, when feasible, avoid damaging effects to any tribal cultural resource.")

Public Resources Code sections 21080.3.1 and 21084.3(c) require CEQA lead agencies to consult with California Native American tribes that have requested notice from such agencies of proposed projects in the geographic area that are traditionally and culturally affiliated with the tribes on projects for which a Notice of Preparation or Notice of Negative Declaration or Mitigated Negative Declaration has been filed on or after July 1, 2015. Specifically, Public Resources Code section 21080.3.1 (d) provides:

Within 14 days of determining that an application for a project is complete or a decision by a public agency to undertake a project, the lead agency shall provide formal notification to the designated contact of, or a tribal representative of, traditionally and culturally affiliated California Native American tribes that have requested notice, which shall be accomplished by means of at least one written notification that includes a brief description of the proposed project and its location, the lead agency contact information, and a notification that the California Native American tribe has 30 days to request consultation pursuant to this section.

The AB 52 amendments to CEQA law does not preclude initiating consultation with the tribes that are culturally and traditionally affiliated within your jurisdiction prior to receiving requests for notification of projects in the tribe's areas of traditional and cultural affiliation. The Native American Heritage Commission (NAHC) recommends, but does not require, early consultation as a best practice to ensure that lead agencies receive sufficient information about cultural resources in a project area to avoid damaging effects to tribal cultural resources.

The NAHC also recommends, but does not require that agencies should also include with their notification letters, information regarding any cultural resources assessment that has been completed on the area of potential effect (APE), such as:

1. The results of any record search that may have been conducted at an Information Center of the California Historical Resources Information System (CHRIS), including, but not limited to:

- A listing of any and all known cultural resources that have already been recorded on or adjacent to the APE, such as known archaeological sites;
- Copies of any and all cultural resource records and study reports that may have been provided by the Information Center as part of the records search response;
- Whether the records search indicates a low, moderate, or high probability that unrecorded cultural resources are located in the APE; and
- If a survey is recommended by the Information Center to determine whether previously unrecorded cultural resources are present.

2. The results of any archaeological inventory survey that was conducted, including:

- Any report that may contain site forms, site significance, and suggested mitigation measures.

All information regarding site locations, Native American human remains, and associated funerary objects should be in a separate confidential addendum, and not be made available for public disclosure in accordance with Government Code section 6254.10.

3. The result of any Sacred Lands File (SLF) check conducted through the Native American Heritage Commission was negative.

4. Any ethnographic studies conducted for any area including all or part of the APE; and

5. Any geotechnical reports regarding all or part of the APE.

Lead agencies should be aware that records maintained by the NAHC and CHRIS are not exhaustive and a negative response to these searches does not preclude the existence of a tribal cultural resource. A tribe may be the only source of information regarding the existence of a tribal cultural resource.

This information will aid tribes in determining whether to request formal consultation. In the event that they do, having the information beforehand will help to facilitate the consultation process.

If you receive notification of change of addresses and phone numbers from tribes, please notify the NAHC. With your assistance, we can assure that our consultation list remains current.

If you have any questions, please contact me at my email address: Andrew.Green@nahc.ca.gov.

Sincerely,



Andrew Green
Cultural Resources Analyst

Attachment

**Native American Heritage Commission
Tribal Consultation List
San Bernardino County
10/5/2021**

Morongo Band of Mission Indians

Ann Brierty, THPO
12700 Pumarra Road
Banning, CA, 92220
Phone: (951) 755 - 5259
Fax: (951) 572-6004
abrierty@morongo-nsn.gov

Cahuilla
Serrano

Morongo Band of Mission Indians

Robert Martin, Chairperson
12700 Pumarra Road
Banning, CA, 92220
Phone: (951) 755 - 5110
Fax: (951) 755-5177
abrierty@morongo-nsn.gov

Cahuilla
Serrano

Quechan Tribe of the Fort Yuma Reservation

Jill McCormick, Historic
Preservation Officer
P.O. Box 1899
Yuma, AZ, 85366
Phone: (760) 572 - 2423
historicpreservation@quechantribe.com

Quechan

San Fernando Band of Mission Indians

Donna Yocum, Chairperson
P.O. Box 221838
Newhall, CA, 91322
Phone: (503) 539 - 0933
Fax: (503) 574-3308
ddyocum@comcast.net

Kitanemuk
Vanyume
Tataviam

San Manuel Band of Mission Indians

Jessica Mauck, Director of
Cultural Resources
26569 Community Center Drive
Highland, CA, 92346
Phone: (909) 864 - 8933
Jessica.Mauck@sanmanuel-nsn.gov

Serrano

Serrano Nation of Mission Indians

Mark Cochrane, Co-Chairperson
P. O. Box 343
Patton, CA, 92369
Phone: (909) 528 - 9032
serranonation1@gmail.com

Serrano

Serrano Nation of Mission Indians

Wayne Walker, Co-Chairperson
P. O. Box 343
Patton, CA, 92369
Phone: (253) 370 - 0167
serranonation1@gmail.com

Serrano

Twenty-Nine Palms Band of Mission Indians

Darrell Mike, Chairperson
46-200 Harrison Place
Coachella, CA, 92236
Phone: (760) 863 - 2444
Fax: (760) 863-2449
29chairman@29palmsbomi-nsn.gov

Chemehuevi

This list is current only as of the date of this document. Distribution of this list does not relieve any person of statutory responsibility as defined in Section 7050.5 of the Health and Safety Code, Section 5097.94 of the Public Resources Code and section 5097.98 of the Public Resources Code.

This list is only applicable for consultation with Native American tribes under Public Resources Code Sections 21080.3.1 for the proposed Vista Verde Project, San Bernardino County.

APPENDIX C

PALEONTOLOGICAL RESOURCES OVERVIEW



BCR Consulting LLC
Fabian Reyes-Martinez
505 West 8th Street
Claremont, CA 91711

September 30, 2021

Dear Mr. Reyes-Martinez,

This letter presents the results of a record search conducted for BCR Vista Verde Project (GUA2101) in the City of Victorville, San Bernardino County, California. The project site is located in Section 28 of Township 5 North and Range 5 West on the Baldy Mesa, California (1988) USGS 7.5 minute topographic quadrangle.

The geologic units underlying the project area are mapped as Quaternary alluvium dating to the Pliocene-Holocene, which is potentially fossiliferous. Quaternary alluvial units are considered to be of high paleontological sensitivity. The Western Science Center does not have localities within the project area, but does have numerous localities within similarly mapped alluvial sediments throughout the region. Pleistocene alluvial deposits in southern California are well documented and known to contain abundant fossil resources including those associated with Columbian mammoth (*Mammuthus columbi*), Pacific mastodon (*Mammut pacificus*), sabertooth cat (*Smilodon fatalis*), ancient horse (*Equus* sp.), and many other Pleistocene megafauna.

Any fossils recovered from the BCR Vista Verde Project area would be scientifically significant. Excavation activity associated with development of the area has the potential to impact the paleontologically sensitive Quaternary alluvial units and it is the recommendation of the Western Science Center that a paleontological resource mitigation plan be put in place to monitor, salvage, and curate any recovered fossils associated with the current study area.

If you have any questions, or would like further information, please feel free to contact me at amcdonald@westerncentermuseum.org

Sincerely,


A handwritten signature in cursive script, appearing to read 'Andrew McDonald', is shown in a light gray rectangular box.

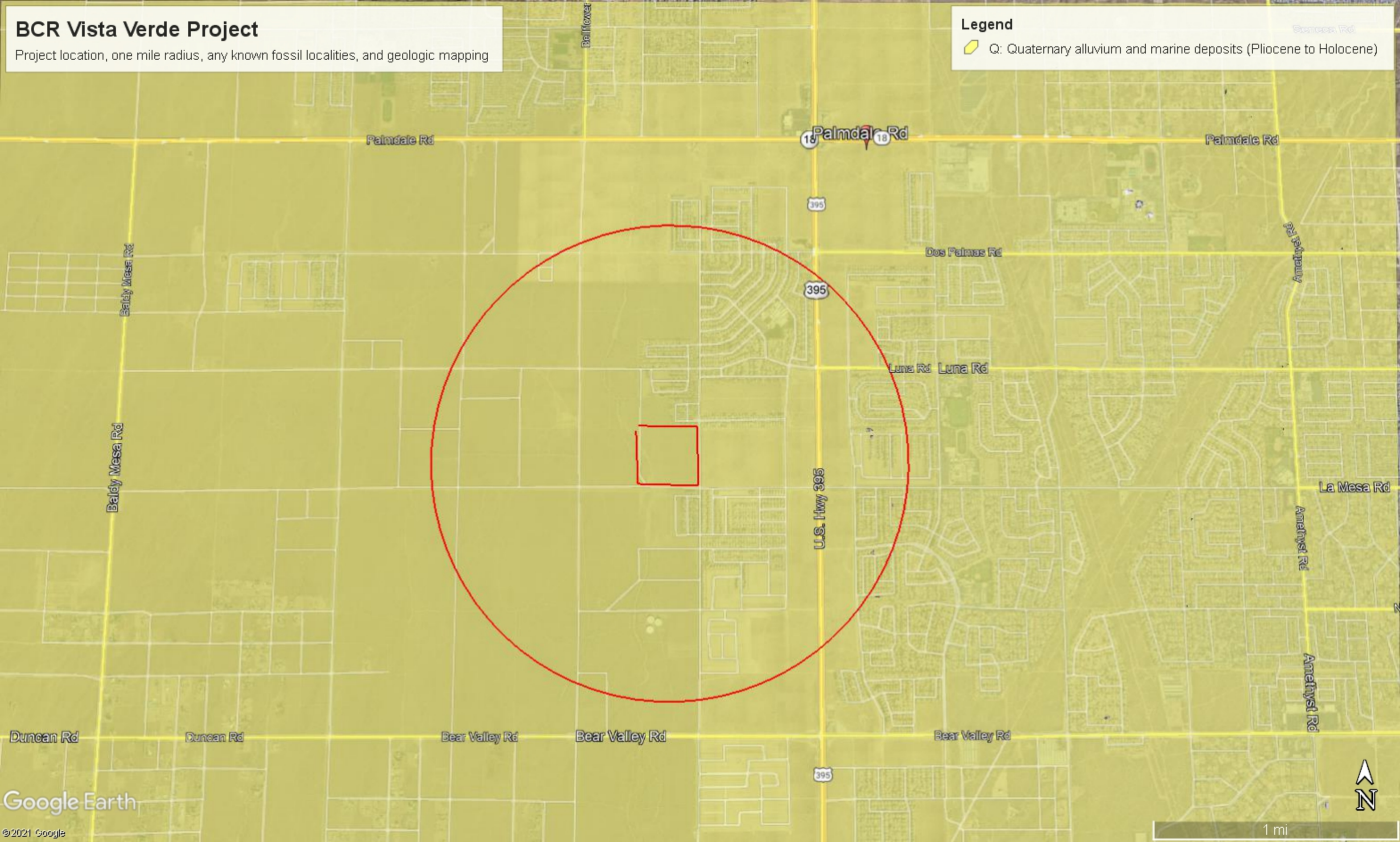
Andrew McDonald
Curator

BCR Vista Verde Project

Project location, one mile radius, any known fossil localities, and geologic mapping

Legend

 Q: Quaternary alluvium and marine deposits (Pliocene to Holocene)



APPENDIX D

PROJECT PHOTOGRAPHS



Photo 1: Overview of Project from NW Corner



Photo 2: Overview of Project from SW Corner



Photo 3: Overview of Project Western Boundary



Photo 4: Overview of Project from SE Corner