

COUNTY OF SACRAMENTO
OFFICE OF PLANNING AND ENVIRONMENTAL REVIEW
NOTICE OF PREPARATION

4/8/2021

TO: ALL INTERESTED PARTIES

SUBJECT: NOTICE OF PREPARATION OF A DRAFT SUPPLEMENTAL ENVIRONMENTAL IMPACT REPORT FOR AMERICAN RIVER PARKWAY NATURAL RESOURCES MANAGEMENT PLAN (PLER2019-00073)

Sacramento County will be the CEQA Lead Agency for preparation of a Supplemental Environmental Impact Report (SEIR) for a project known as American River Parkway Natural Resources Management Plan (NRMP). The SEIR will supplement the Final EIR, certified in September 2008, for the American River Parkway Plan Update (County Control No. 03-GPB-0332; State Clearinghouse No. 2007032125).

A SEIR is the appropriate CEQA document for the proposed project (i.e. NRMP) pursuant to CEQA (§15163). Only minor additions or changes are necessary to make the previous EIR (County Control No. 03-GPB-0332) adequately apply to the project. The SEIR will contain the information necessary to make the previous EIR adequate for the approval of the NRMP by the CEQA Lead and Responsible Agencies.

This Notice of Preparation has been sent to responsible and trustee agencies and involved federal agencies pursuant to §15082 of the CEQA Guidelines. Agencies should comment on the scope and content of the environmental information that is germane to the agencies' statutory responsibilities in connection with the proposed project. Due to the time limits mandated by State law, your response must be sent at the earliest possible date, but not later than 30 days after receipt of this notice.

The project description, location, and the probable environmental effects are contained in the attached materials and may be viewed online at:

<https://planningdocuments.saccounty.net/ViewProjectDetails.aspx?ControlNum=PLER2019-00073>

The draft NRMP can be viewed online at:

<https://regionalparks.saccounty.net/Parks/Pages/NaturalResourcesManagement.aspx>

The Final EIR for the American River Parkway Plan Update can be viewed online at:

<https://planningdocuments.saccounty.net/ViewProjectDetails.aspx?ControlNum=2003-0332>

Please send your Agency's response to this Notice to:

Joelle Inman, Environmental Coordinator
Office of Planning and Environmental Review
827 7th Street, Room 225, Sacramento, CA 95814
or via e-mail at: CEQA@saccounty.net.

Your response should include the name of a contact person in your agency.

Agencies with specific questions about the project should contact Josh Greetan, Project Manager, at greetanj@saccounty.net for further information.

PROJECT TITLE: AMERICAN RIVER PARKWAY NATURAL RESOURCES MANAGEMENT PLAN

Owner: Various

Applicant:

Sacramento County Department of Regional Parks
10361 Rockingham Drive
Sacramento, CA 95827

LOCATION:

The American River Parkway (Parkway) is an open space greenbelt extending approximately 29 miles and covers approximately 7,000 acres. The Sacramento County Department of Regional Parks (Regional Parks) manages lands on the lower 23 miles of the Parkway from the Hazel Avenue Bridge to the American River confluence with the Sacramento River, approximately 5,000 acres (Plate NOP-1). Several urban communities are located along the edges of the Parkway, including the City of Sacramento, the City of Rancho Cordova, and portions of unincorporated Sacramento County, including the communities of Arden-Arcade, Carmichael and Fair Oaks.

BACKGROUND:

The American River Parkway Plan (Parkway Plan) is the guiding policy document that directs management decisions within the Parkway. The Parkway Plan has been the major guiding document for the implementation of the Wild and Scenic River designation. The County of Sacramento has the principal responsibility for administration and management of the Parkway as guided by the Parkway Plan.

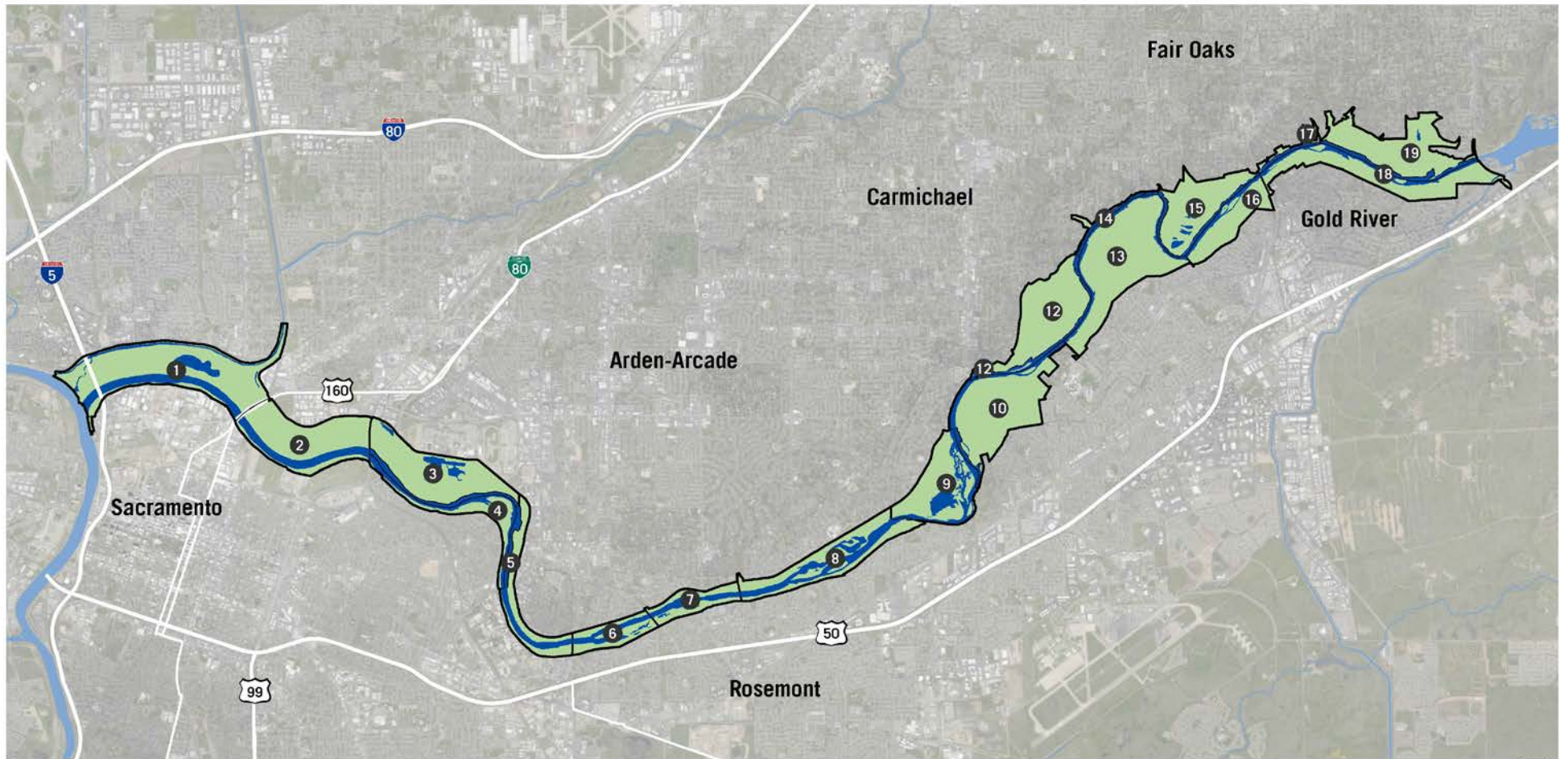
The purpose of the Parkway Plan is to provide direction for land use decisions affecting the Parkway. The Parkway Plan specifically addresses the preservation, use, development, and administration of the Parkway. The Parkway Plan outlines specific policies for the overall Parkway, as well as area-specific (e.g., SARA Park, Arden Bar, etc.) policies regarding authorized use of the Parkway and its resources. These include limits on development and protection of natural resources.

The NRMP advances management strategies and measures contained in the Parkway Plan. In 2008, Regional Parks began a process to develop a Natural Resource Management Plan (NRMP) for the Parkway. The original NRMP Stakeholder Committee (Committee) worked with Regional Parks from 2008 to 2010. The Committee was charged with gathering and evaluating natural resource data in order to provide recommendations to both protect and to improve the health of the Parkway's ecosystems and natural values. The Committee accomplished many important goals including baseline ecosystem mapping of the Parkway. The baseline mapping delineated the Parkway by ecosystem types, with an evaluation of current health, trends and threats in each area.

The Committee also identified high value resources as well as degraded areas that could be improved. The Committee made preliminary recommendations for Parkway management, including identifying opportunities for protecting high value resources and opportunities for creating desired habitat in degraded areas.

In 2014, Regional Parks reinitiated the NRMP effort with the goal of creating a document that would be aligned with the goals and policies of the 2008 American River Parkway Plan. A new Stakeholder Committee convened in Spring/Summer of 2015 to develop a set of recommended draft NRMP specifications to provide the guidelines and parameters of a Scope of Work. The Stakeholder Committee developed specifications and Sacramento County Regional Parks staff contributed supplementary specifications to develop the Scope of Work and current draft NRMP.

Plate NOP-1: Location Map of 19 Areas in the NRMP



AREAS		5	Campus Commons	10	River Bend Park	15	Sacramento Bar
1	Discovery Park	6	Howe Avenue	11	Sarah Court Access	16	Lower Sunrise
2	Woodlake	7	Watt Avenue	12	Ancil Hoffman County Park	17	Sunrise Bluffs
3	Cal Expo	8	SARA Park	13	Rossmorr Bar	18	Upper Sunrise
4	Paradise Beach	9	Arden Bar	14	San Juan Bluffs	19	Sailor Bar

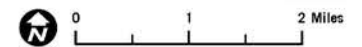


Figure 3-1
American River Parkway

PROJECT DESCRIPTION:

The NRMP is intended to provide relevant and defensible information to the Parkway Manager for making informed decisions for managing, maintaining, and enhancing Parkway resources. In general, the NRMP shall provide a clear understanding of existing Parkway resources, the effects of disturbances such as flood, fire, invasive species and human impacts, as well as opportunities for protections and enhancements. It should advise resource management for promoting healthy ecosystems and resource protections, while balancing concurrent Parkway goals of flood control, recreational opportunities and public safety.

The purpose of the NRMP is to establish resource management guidelines to minimize the impact of human uses on the Parkway and on the environment. The NRMP includes goals and objectives designed to maintain natural communities located within the Parkway and identifies potential management actions to accomplish each goal and objective. The management categories are described below:

- **Preservation:** Existing mitigation sites that require protection in perpetuity (e.g. weed management, limited disturbance).
- **Conservation:** Existing conditions are considered to generally meet desired conditions, but have been degraded to varying degrees (e.g., fire, illegal camping, social trails, degraded understory, etc.) and should be improved to meet goals. The need for ongoing rehabilitation of degraded areas is expected.
- **Naturalization:** Modifying areas that were substantially altered in the past in order to improve existing natural resource conditions or otherwise modify to meet the management objectives of the Parkway Plan, NRMP, and Wild and Scenic Rivers Act policies. This applies to areas previously altered and outcomes are generally native habitat types that would typically be expected to occur in the Parkway.
- **Rehabilitation Overlay:** Applies to any of the aforementioned categories that are degraded or damaged in the future and require action to improve their condition. Rehabilitation is an overlay of all other categories and can happen anywhere in the Parkway, just as all areas in the Parkway are subject to degradation or damage.

In order to present management actions in the Parkway, an 11"x17" area plan map is provided in the NRMP for each of the 19 areas. Each map set shows potential resource management actions and management categories as described below.

DISCOVERY PARK

Potential Resource Management Actions (reference Plate NOP-3):

1. Rehabilitate homeless encampments
2. Establish low-growing native vegetation under power lines
3. Purchase and naturalize Urrutia property
4. Establish native riparian species / remove non-natives
5. Expand wildlife connectivity opportunities
6. Address and minimize impacts associated with proposed bridge crossing
7. Purchase and naturalize Riverdale mobile home park
8. Improve habitat and public access at Camp Pollock
9. Remediate social trail impacts to promote native vegetation growth
10. Remove urban rubble/redesign bank

11. Maintain tall tree overstory in parking and picnic area for nesting birds
12. Increase tall tree overstory in burned areas

WOODLAKE

Potential Resource Management Actions (reference Plate NOP-4):

1. Lower floodplain
2. Implement USACE ecosystem restoration project
3. Establish low-growing native vegetation under power lines
4. Rehabilitate homeless encampment impacts
5. Expand riparian corridor
6. Expand wildlife connectivity opportunities
7. Suppress fire in mature vegetation stands
8. Remediate social trail impacts to promote native vegetation growth
9. Maintain flow through drainage slough

CAL EXPO

Potential Resource Management Actions (reference Plate NOP-5):

1. Lower floodplain
2. Establish low-growing native vegetation under power lines
3. Rehabilitate homeless encampment impacts
4. Implement USACE ecosystem restoration project
5. Remediate social trail impacts to promote native vegetation growth
6. Manage invasive vegetation
7. Improve wildlife connectivity opportunities
8. Suppress fires and design fuel breaks in mature vegetation
9. Continue CSUS research and habitat development
10. Increase tall tree overstory in burned areas

Paradise Beach

Potential Resource Management Actions (reference Plate NOP-6):

1. Lower floodplain
2. Rehabilitate homeless encampment impacts
3. Remediate social trail impacts to promote native vegetation growth
4. Suppress fires in mature vegetation
5. Manage invasive vegetation

Campus Commons

Potential Resource Management Actions (reference Plate NOP-7):

1. Lower floodplain
2. Rehabilitate homeless encampment impacts
3. Establish low-growing native vegetation under power lines
4. Improve floodplain connectivity to reduce fish stranding
5. Manage invasive vegetation
6. Suppress fires in mature vegetation stands
7. Remediate social trail impacts to promote native vegetation growth

Howe Avenue

Potential Resource Management Actions (reference Plate NOP-8):

1. Lower floodplain
2. Rehabilitate homeless encampment impacts
3. Establish low-growing native vegetation under power lines
4. Suppress fires in mature vegetation stands
5. Remediate social trail impacts to promote native vegetation growth
6. Manage invasive vegetation

Watt Avenue

Potential Resource Management Actions (reference Plate NOP-9):

1. Lower floodplain
2. Rehabilitate homeless encampment impacts
3. Establish low-growing native vegetation under power lines
4. Manage invasive vegetation
5. Suppress fires in mature vegetation stands
6. Remediate social trail impacts to promote native vegetation growth

SARA Park

Potential Resource Management Actions (reference Plate NOP-10):

1. Lower floodplain
2. Rehabilitate homeless encampment impacts
3. Manage invasive vegetation
4. Establish valley oak riparian woodland
5. Maintain flow through drainage slough
6. Suppress fire in mature vegetation stands
7. Remediate social trail impacts to promote native vegetation growth

Arden Bar

Potential Resource Management Actions (reference Plate NOP-11):

1. Lower floodplain
2. Maintain spawning riffle
3. Manage invasive vegetation
4. Develop naturalization plan for Arden Pond
5. Improve native riparian and oak woodland communities
6. Remediate social trail impacts to promote native vegetation growth

River Bend Park

Potential Resource Management Actions (reference Plate NOP-12):

1. Lower floodplain
2. Improve spawning riffle
3. Manage invasive vegetation
4. Develop conceptual naturalization plan
5. Remediate social trail impacts to promote native vegetation growth

Sarah Court Access

Potential Resource Management Actions (reference Plate NOP-13):

1. Improve degraded riparian habitats

Ancil Hoffman County Park

Potential Resource Management Actions (reference Plate NOP-14):

1. Lower floodplain
2. Improve spawning riffle
3. Enhance native woodlands and grasslands
4. Improve habitat values on Carmichael Creek
5. Support interpretive uses at Effie Yeaw Nature Center
6. Manage invasive vegetation
7. Remediate social trail impacts to promote native vegetation growth
8. Improve degraded riparian habitats

Rossmoor Bar

Potential Resource Management Actions (reference Plate NOP-15):

1. Improve spawning riffle
2. Protect recently planted vegetation
3. Manage invasive vegetation
4. Improve degraded riparian habitats
5. Enhance woodland savanna and/or grasslands
6. Maintain historic mine tailings for interpretive purposes
7. Re-contour and improve substrate to support woody vegetation
8. Improve fallow agricultural areas with woodland savanna or grassland
9. Remediate social trail impacts to promote native vegetation growth

San Juan Bluffs

Potential Resource Management Actions (reference Plate NOP-16):

1. Manage invasive vegetation
2. Monitor bluff erosion

Sacramento Bar

Potential Resource Management Actions (reference Plate NOP-17):

1. Lower floodplain
2. Improve spawning riffle
3. Maintain spawning riffle
4. Maintain lowered floodplain
5. Remediate social trail impacts and promote native vegetation growth
6. Improve degraded riparian habitats
7. Manage invasive vegetation
8. Develop conceptual naturalization plan for open mining pits/ponds

Lower Sunrise

Potential Resource Management Actions (reference Plate NOP-18):

1. Lower floodplain
2. Maintain spawning riffle
3. Maintain lowered floodplain
4. Manage invasive vegetation
5. Enhance woodland savanna and/or grasslands

Sunrise Bluffs

Potential Resource Management Actions (reference Plate NOP-19):

1. Lower floodplain
2. Improve spawning riffle
3. Manage invasive vegetation
4. Improve degraded riparian habitat
5. Monitor bluff erosion

Upper Sunrise

Potential Resource Management Actions (reference Plate NOP-20):

1. Lower floodplain
2. Improve spawning riffle
3. Maintain spawning riffle
4. Maintain lowered floodplain
5. Manage invasive vegetation
6. Remediate social trail impacts and promote native vegetation growth
7. Develop conceptual naturalization plan for areas altered by mining

Sailor Bar

Potential Resource Management Actions (reference Plate NOP-21):

1. Lower floodplain
2. Maintain spawning riffle
3. Maintain lowered floodplain
4. Manage invasive vegetation
5. Maintain water levels at Sailor Bar-Pond for wildlife habitat
6. Improve degraded riparian habitats
7. Expand oak habitats in conservation and naturalization areas
8. Re-contour mined areas to support oak habitats
9. Lower elevation of relict pools / remove gunite
10. Remediate social trail impacts and promote native vegetation growth

PROJECT OBJECTIVE:

The objective of the NRMP is to provide relevant and defensible information to the Parkway Manager for making informed decisions for managing, maintaining, and enhancing Parkway resources.

The NRMP's goal areas, goals, objectives, and performance measures (PM) are listed below and follow the framework shown in Table NOP-1. There are objectives tied to each goal and performance measures (PM) tied to the objectives. The objectives follow the SMART (**S**pecific, **M**easurable, **A**ttainable, **R**elevant, **T**ime-Oriented) framework, the components of which are defined as follows:

- Specific: Objectives are linked to a goal or strategic plan and answer the questions, “Who?” and, “What?”
- Measurable: The success toward meeting the objective can be measured. Objectives answer the question, “How?”
- Attainable: Objectives are realistic and can be achieved in a specific amount of time.
- Relevant: Objectives are aligned with current tasks and projects and focus in one defined area. The objectives include the expected result.
- Time Oriented: Objectives have a clearly defined time-frame including a target or deadline date.

SMART objectives clarify expectations and provide the means to determine if the objective is successfully completed.

Specifically, where feasible, success criteria will be established for individual projects to enable monitoring of each project's success over a 5-year period. After 5 years, the success of the projects will be evaluated to determine if modification of the NRMP's goals and objectives, and projects is needed to improve resource protection, enhancement, and restoration within the Parkway.

As such, completion dates for the objectives are placed into two categories: (1) 1-2 years after NRMP completion; and (2) 3-5 years after completion. After five years, the NRMP will undergo a comprehensive review.

Plate NOP-2 depicts the five goal areas and the objectives framework. Table NOP-1 shows goals within each of the five goal areas, objectives and performance measures, lead and supporting roles, potential funding sources, and estimated timing for completion.

Plate NOP-2: NRMP Goals and Objectives Framework

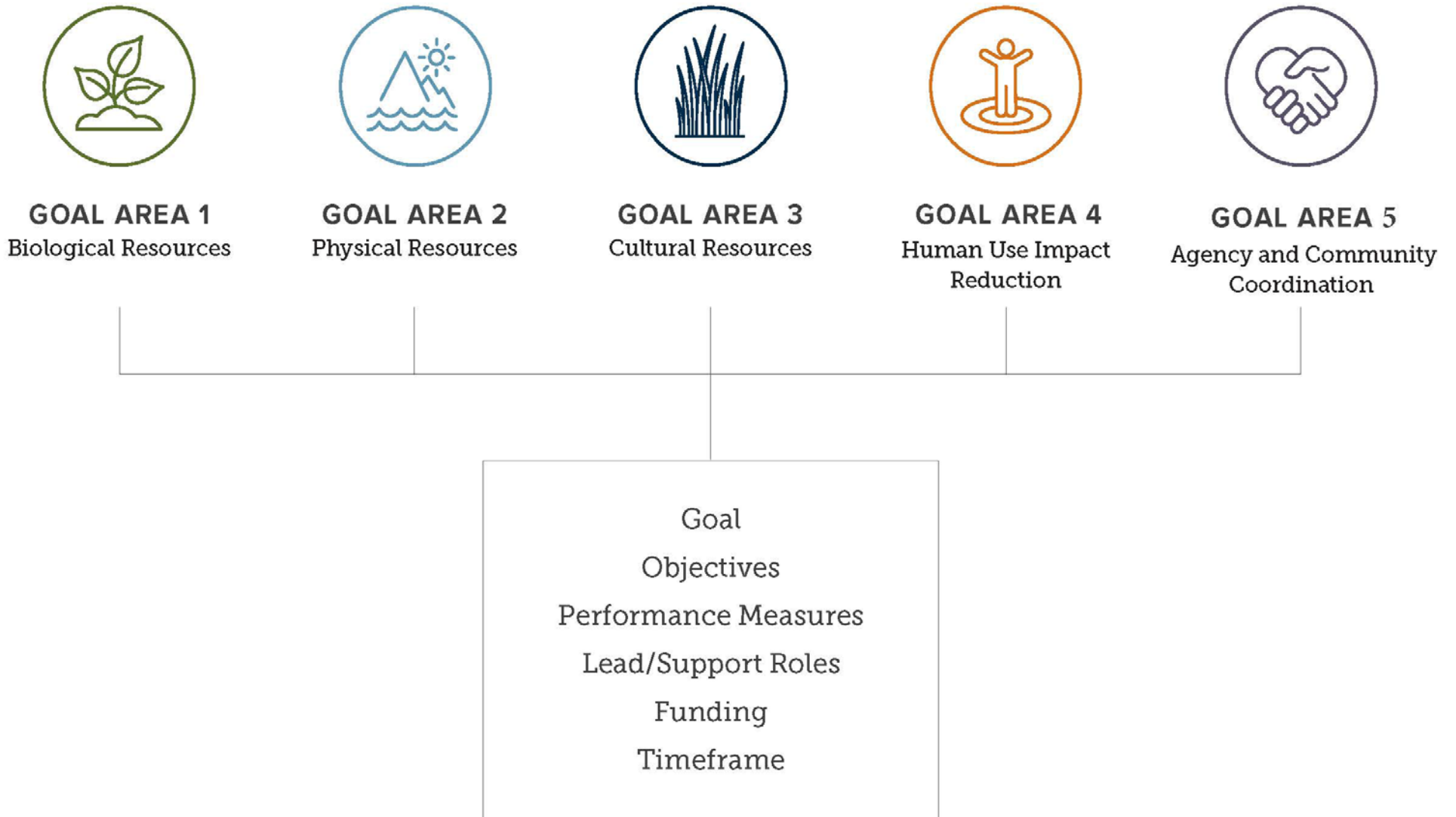







Table NOP-1: Goals & Objectives/Performance Measures


GOAL AREA	GOAL	OBJECTIVES/PERFORMANCE MEASURES	LEAD	SUPPORT	FUNDING	COMPLETION DATE
 GOAL AREA 1 Biological Resources	1.1 Assess biological resources within the Parkway.	1.1a Completion of periodic updates to vegetation community maps. 1.1b Completion of shaded riverine aquatic habitat map. 1.1c Completion of systematic sensitive species surveys. 1.1d Completion of systematic invasive species surveys. 1.1e Completion of periodic updates to wildfire and homeless encampment maps.	Regional Parks	Agencies and entities with an interest in conducting habitat/ ecosystem restoration, mitigation or construction projects	WCB conservation programs, Water Forum, Regional Parks, CNPS, Project proponents, State/federal grants	Within two years of NRMP completion
	1.2 Preserve high-quality native habitats.	1.2a Preservation of 176 ac of high-quality native riparian vegetation communities. 1.2b Preservation of 17 ac of high-quality native grassland vegetation communities. 1.2c Preservation of 54 ac of high-quality native woodland vegetation communities. 1.2d Preservation of 14 ac of high-quality native elderberry vegetation communities.	Regional Parks	NPOs, State agencies, Project proponents	CDFA, WCB conservation programs, Regional Parks, Mitigation projects, Other applicable grant programs	3-5 years
	1.3 Conserve high-quality native habitats that require improvement.	1.3a Conservation of 1184 ac of high-quality native riparian vegetation communities. 1.3b Conservation of 99 ac of high-quality native grassland vegetation communities. 1.3c Conservation of 578 ac of high-quality native woodland vegetation communities. 1.3d Conservation of 43 ac of high-quality native elderberry vegetation communities.	Regional Parks	USACE, Local jurisdictions, Landowners (e.g., Cal Expo, State Lands Commission)	USACE, WCB conservation programs, CSU Sacramento or UC Davis, Landowner general fund, Local jurisdiction general fund, Fire suppression authorities, Applicable state grants	3-5 years
	1.4 Naturalize habitats that have been altered by human activity.	1.4a Naturalization of 118 ac (3-5 years) and 64 ac (6-10 years) of native riparian vegetation communities (total = 182 acres). ¹ 1.4b Naturalization of 2 ac (3-5 years) and 50 ac (6-10 years) of native grassland vegetation communities (total = 52 acres). ¹ 1.4c Naturalization of 13 ac (3-5 years) and 111 ac (6-10 years) of native woodland vegetation communities (total = 124 acres). ¹ 1.4d Naturalization of 33 ac (3-5 years) of native elderberry vegetation communities. ¹ 1.4e Completion of five salmonoid habitat enhancement projects in cooperation with the Water Forum (3-5 years). ¹	Regional Parks	Local jurisdictions, Landowners, Project proponents (e.g., SAFCA, USACE)	WCB conservation programs, USACE, grant funds, Mitigation projects, USACE's Ecosystem Restoration and Tribal Partnership programs	3-5 years / 6-10 years
	1.5 Rehabilitate habitats damaged or degraded by fire or homeless populations.	1.5a Mapping and evaluation all areas damaged or degraded by wildfire or encampments annually. 1.5b Preparation of plan to determine if areas can be passively rehabilitated or if active rehabilitation.	Regional Parks	CSUS, SAFCA, Project proponents, Parkway stakeholders	CVPIA, CDFW, WCB conservation programs, USFWS Section 6 Conservation Grants, DWR grants, mitigation funds	3-5 years

GOAL AREA	GOAL	OBJECTIVES/PERFORMANCE MEASURES	LEAD	SUPPORT	FUNDING	COMPLETION DATE
 GOAL AREA 1 Biological Resources	1.6 Expand corridors that connect disparate native vegetation communities and wildlife habitat	1.6a Reduction of barriers to fish and wildlife movement in the Lower Parkway.	Regional Parks	Water Forum, Project proponents	USACE, WCB conservation programs, CDFW, Wildlife Corridors Conservation Act, NFWF grant programs, mitigation funds	3-5 years
	1.7 Reduce the prevalence of invasive, non-native species.	1.7a Completion of Invasive Species Management Plan Update 1.7b Replacement of five acres of invasive, non-native species with native species identified in the NRMP.	Regional Parks	NPOs, ARPF, USACE, Project proponents, Parkway stakeholders	Regional Parks, Grants, USACE, state bond-funded projects that restore habitat, County general fund, grant funds and mitigation funds	3-5 years

GOAL AREA	GOAL	OBJECTIVES/PERFORMANCE MEASURES	LEAD	SUPPORT	FUNDING	COMPLETION DATE
 GOAL AREA 2 Physical Resources	2.1 Stabilize bank conditions throughout the Parkway to minimize erosion and retain natural riverine processes.	2.1a Stabilization of 100% of all levees throughout the Parkway consistent with maintaining a natural riverine environment	Regional Parks, USACE, SAFCA	Reclamation Districts	USACE, SAFCA	3-5 years
	2.2 Improve water quality.	2.2a Coordination with State Water Quality Control Board to monitor E. coli consistent with guidelines for aquatic recreation activities.	Regional Parks, SWRCB	DWR, Cities of Sacramento and Rancho Cordova	WCB conservation programs, DWR grant programs, stormwater violation dollars/ supplemental environmental projects	Within two years of NRMP completion

GOAL AREA	GOAL	OBJECTIVES/PERFORMANCE MEASURES	LEAD	SUPPORT	FUNDING	COMPLETION DATE
 GOAL AREA 3 Cultural Resources	3.1 Protect archaeological and historical resources.	3.1a Protection of 100% of the officially designated archaeological and historical resources (listing is provided in the data management system).	Regional Parks	Tribal governments	WCB conservation programs, tribal partnerships, cultural resources grant programs	3-5 years
	3.2 Form a partnership with tribal governments to protect and manage cultural resources in the Parkway.	3.2a Establishment of regular annual meetings with tribal government representatives.	Regional Parks	Tribal governments	WCB conservation programs, USACE Tribal Partnership Program, local tribes, state/ federal grant programs	Within two years of NRMP completion

GOAL AREA	GOAL	OBJECTIVES/PERFORMANCE MEASURES	LEAD	SUPPORT	FUNDING	COMPLETION DATE
 GOAL AREA 4 Human Use Impact Reduction	4.1 Minimize human use impacts on all Parkway resources.	4.1a Location of future recreational use areas and facilities 100 feet from a waterway as long as allowable recreational activities can be maintained. 4.1b Documentation and mapping of social trails in the Parkway.	Regional Parks	Cities, Event organizers, Recreation focus groups	WCB conservation programs, REI grants, federal grants, organized event sponsors	3-5 years
	4.2 Reduce impacts associated with homeless encampments in the Parkway.	4.2a Elimination or mitigation of the detrimental consequences associated with homeless encampments, such as: (1) accumulated debris; (2) environmental degradation; and (3) health and public safety issues including degradation of public infrastructure such as levees (as directed by the Martin vs. Boise court decision).	Regional Parks	Sacramento County Department of Health and Human Services, Cities of Sacramento and Rancho Cordova	County General Fund	3-5 years
	4.3 Reduce impacts related to large group gatherings and special events.	4.3a Containment of large special event activities within developed recreational areas.	Regional Parks	Event sponsors	Event fees from permits issued by County	Within two years of NRMP completion
	4.4 Maximize environmentally beneficial opportunities within transmission line corridors.	4.4a Utilization of transmission line corridors for environmentally beneficial vegetation as long as access for maintenance and safety is maintained.	Regional Parks	WAPA, PG&E, SMUD, Utility Arborist Association	Utility companies, County general fund, WCB conservation programs	3-5 years
	4.5 Reduce the amount of ambient light impacting biological resources in the Parkway while ensuring a safe park environment.	4.5a Identification of areas in the Parkway where there is an unnecessary amount of ambient light and create a plan for reducing the light.	Regional Parks	Cities, Landowners	County and/or city/state general funds	3-5 years
	4.6 Interpret environmental, archaeological, and historical resources and educate the public on the significance of the Parkway in the greater Sacramento region.	4.6a Development of an interpretation plan for the American River Parkway. 4.6b Inclusion of interpretive elements with large mitigation projects.	Regional Parks	ARNHA, Soil Born Farms, ARPF, SCOE, other NPOs	WCB conservation programs, state/federal grant programs, NGO grants, County departments, tribes, project proponents	3-5 years

GOAL AREA	GOAL	OBJECTIVES/PERFORMANCE MEASURES	LEAD	SUPPORT	FUNDING	COMPLETION DATE
 GOAL AREA 5 Agency and Community Coordination	5.1 Convene a Parkway resource group to oversee NRMP implementation.	5.1a Creation a sub-committee of the American River Parkway Advisory Committee to meet at least once per year with Regional Parks staff to evaluate the implementation of the NRMP.	Regional Parks	SAFCA, Water Forum, ARPAC, RPC, LARCP, Parkway stakeholders	In-kind contributions from County, stakeholders, and partners	Within two years of NRMP completion
	5.2 Reduce wildfire fuel and hazards in the Parkway.	5.2a Development and implementation of a plan for wildfire prevention, response, and recovery. 5.2b Development of a tracking system for wildfires in the Parkway.	Regional Parks	Sacramento Metro Fire, Sacramento City Fire, Utility companies, Cities, Landowners	WCB conservation programs, Cal Fire Grants, Urban Corps grants, federal grant programs	Within two years of NRMP completion
	5.3 Support scientific research programs to increase the quantity and quality of data describing the condition of Parkway resources.	5.3a Establishment of ongoing research and data collection programs with CSUS, UC Davis, and other local colleges. 5.3b Development of a citizen science data program.	Regional Parks	CSUS and UC Davis	State and federal research grants, grad student research, project proponents	3-5 years
	5.4 Implement a robust environmental monitoring program.	5.4a Provision of annual updates of monitoring data to the NRMP geodatabase.	Regional Parks, SAFCA, USACE	Regulatory agencies, Project proponents	WCB conservation programs	Within two years of NRMP completion
	5.5 Encourage public outreach and educational activities to increase the public's understanding and appreciation of Parkway resources.	5.5a Establishment of one educational partnership, per year, with local school districts and community-based organizations to develop curriculum for teaching environmental stewardship and proper use of Parkway resources.	Regional Parks, SCOE	ARPF, ARNHA, Soil Born Farms	County programs, in-kind contributions from partners	3-5 years

ENVIRONMENTAL/LAND USE SETTING:

The Parkway is surrounded primarily by urban development within Sacramento County. Undeveloped “bars” (elevated landforms near a river) containing larger areas of natural vegetation are occasional on both the north and south side of the river in the upper half of the Parkway. These bars and designated parks include (from upriver to downriver) Sailor Bar, Sacramento Bar, Rossmoor Bar, Ancil Hoffman County Park, River Bend Park, and Arden Bar. Major vegetation types in the Parkway include grassland, oak woodland, willow riparian, cottonwood forests, ponds, marshes/seeps, introduced vegetation, and agricultural. Due to past mining activities along and in the river, there are also significant areas of barren land and mine tailings/rock piles.

The lower American River is classified as a “Recreation” river within the state and federal Wild and Scenic River Systems. The Parkway is designated either as Natural Preserve or as Recreation on the Sacramento County General Plan. The Sacramento County Zoning Code designates the area as “O (PC)”, for Recreation and Parkway Corridor Combining Zone, with some areas also denoted “F”, for Flood Combining Zone. The Parkway Plan provides more specific land use designations for areas within the Parkway: Open Space Preserve, Nature Study Area, Protected Area, Limited Recreation, Developed Recreation and Recreation Reserve.

The existing Parkway includes maintained trails, some roads and staging areas and public facilities (an interpretive center, boat launches, bathrooms, etc.). There are also some existing commercial, public and agricultural uses in the Parkway, pumping stations, and small active farms. The Parkway is surrounded on both sides by urban development, primarily of a residential character. To connect these urban areas, the American River is crossed by two freeways, nine local thoroughfares, two train bridges, five pedestrian/bicycle bridges and the Nimbus Dam. The American River is flanked on both sides by levees where needed to protect urban development.

PROBABLE ENVIRONMENTAL EFFECTS/SEIR FOCUS:

- Land Use
- Hydrology/Flooding
- Water Quality
- Air Quality
- Public Safety/Nuisance Impacts
- Access and Circulation
- Noise
- Biology
- Cultural/Historical Resources
- Tribal Cultural Resources
- Aesthetics
- Hazards & Hazardous Materials

- Areas of Known Controversy

INTENDED USES OF THE SEIR AND NRMP:

The SEIR will supplement the analysis in the Final EIR for the Parkway Plan and disclose to the public and decision makers potential environmental impacts pursuant to CEQA associated with the proposed NRMP. The purpose of the NRMP is to provide relevant and defensible information for making informed decisions for managing, maintaining, and enhancing Parkway resources. Regional Parks will use this plan to help identify the effects of disturbances such as flood, fire, invasive species and human impacts, as well as opportunities for protections and enhancements. It will advise resource management strategies for promoting healthy ecosystems and resource protections, while balancing concurrent Parkway goals of flood control, recreational opportunities and public safety.

Responsible Agencies may include but not be limited to the following:

- Sacramento Area Flood Control Agency,
- US Fish and Wildlife Service,
- US Army Corps of Engineers,
- California Department of Fish and Wildlife,
- Central Valley Regional Water Quality Control Board,
- City of Sacramento,
- City of Rancho Cordova,
- Sacramento Municipal Utility District and/or Pacific Gas and Electric.

Plate NOP-3: Potential Management Actions at Discovery Park



Plate NOP-4: Potential Management Actions at Woodlake

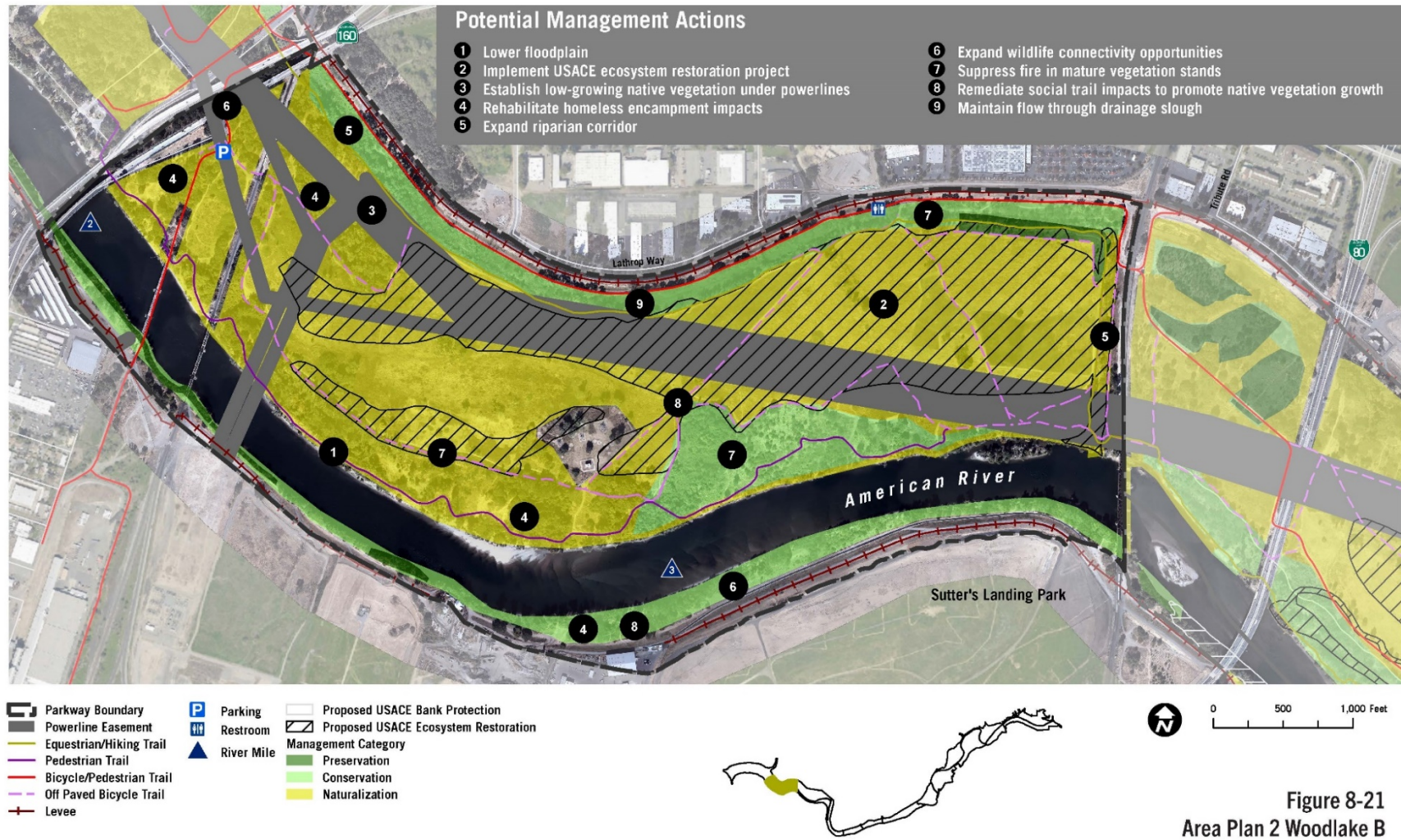


Plate NOP-5: Potential Management Actions at Cal Expo

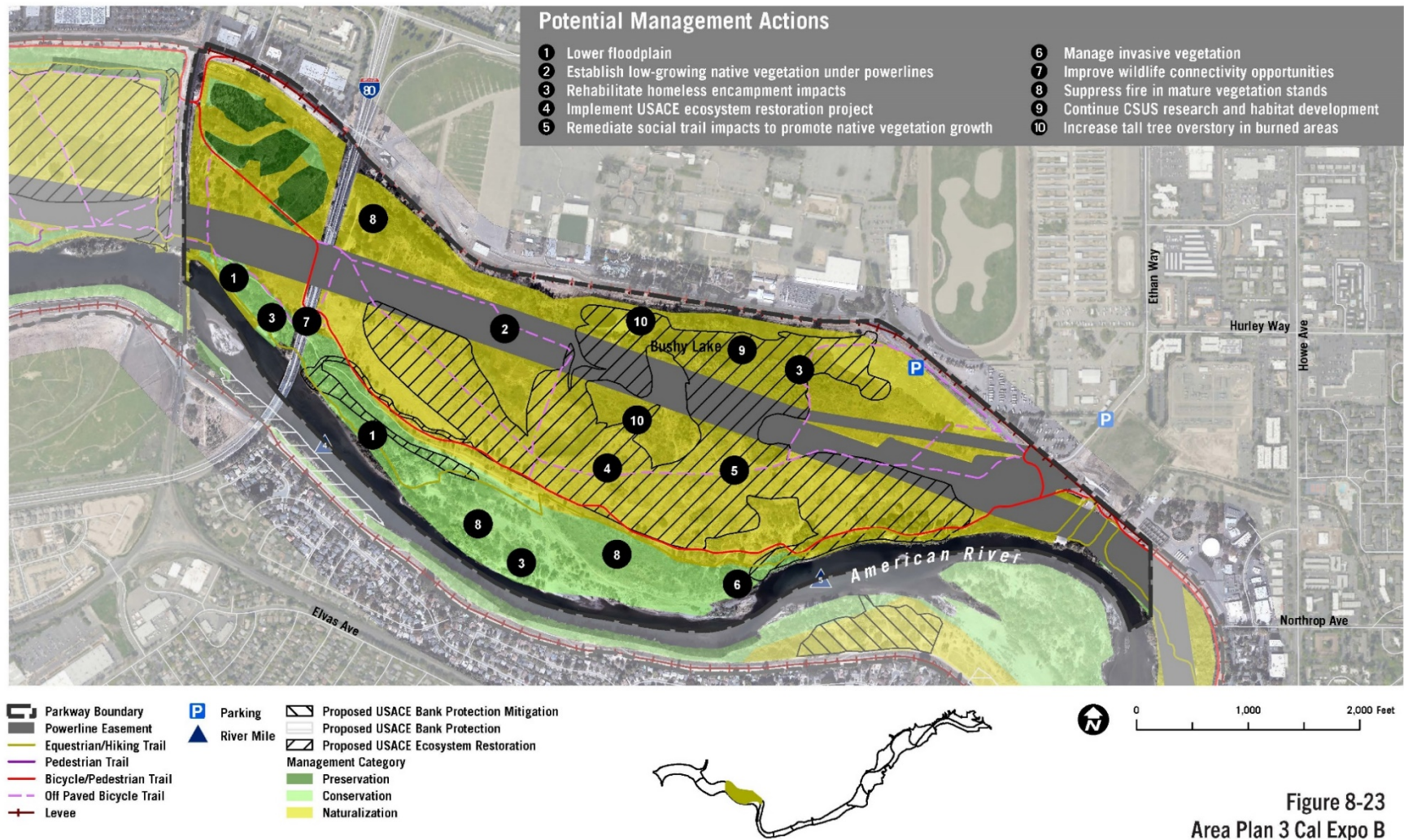


Plate NOP-6: Potential Management Actions at Paradise Beach

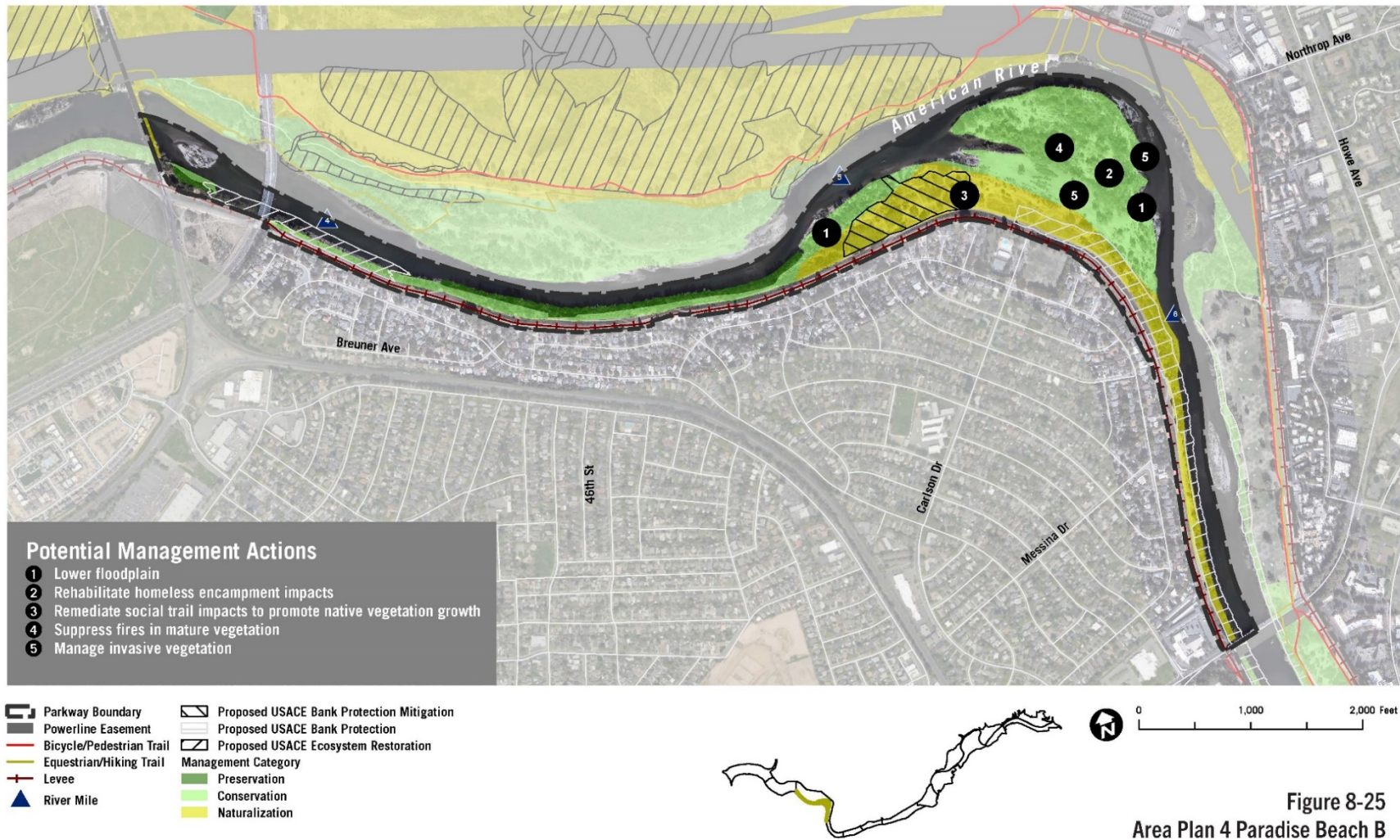


Plate NOP-7: Potential Management Actions at Campus Commons

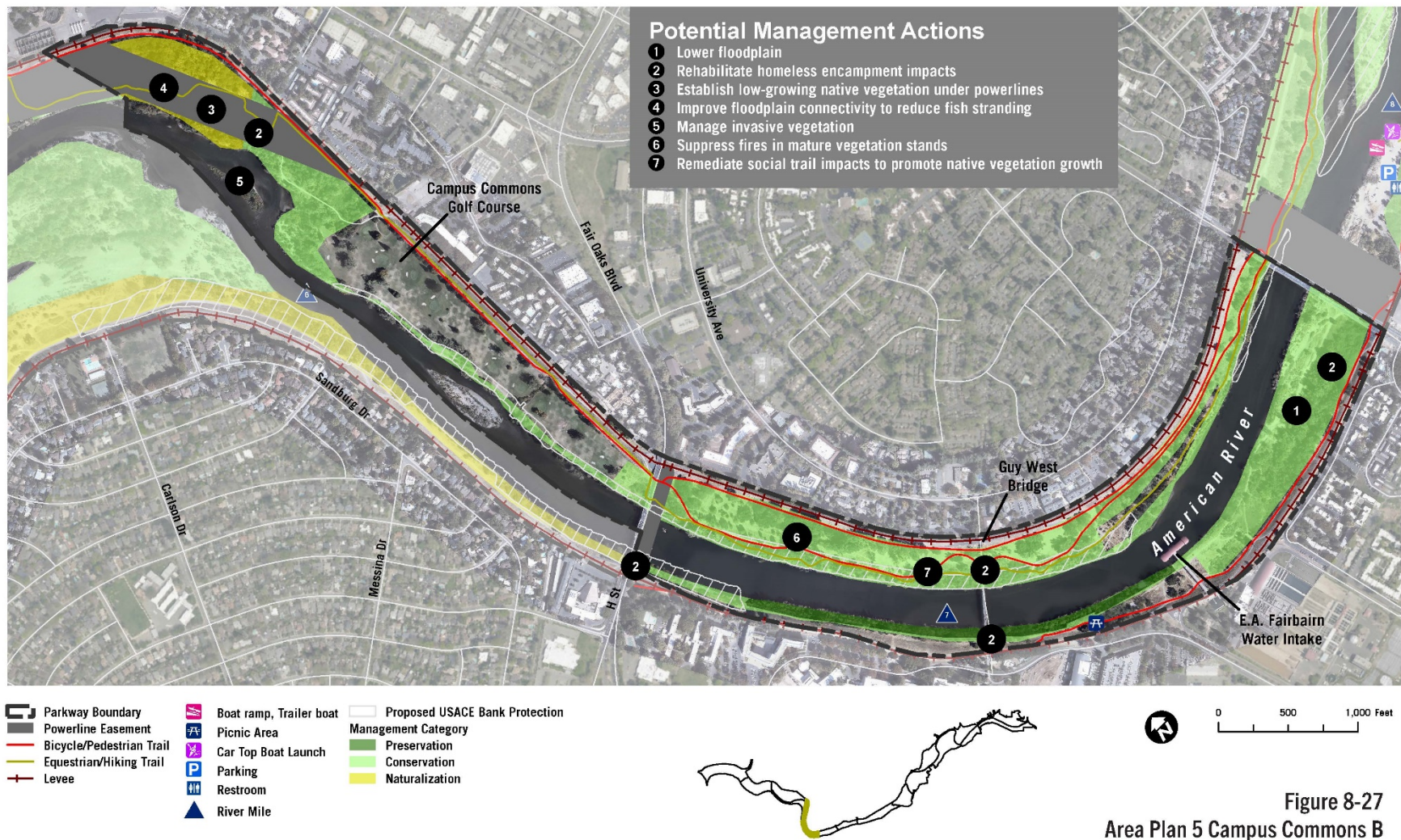


Plate NOP-8: Potential Management Actions at Howe Avenue



Plate NOP-9: Potential Management Actions at Watt Avenue

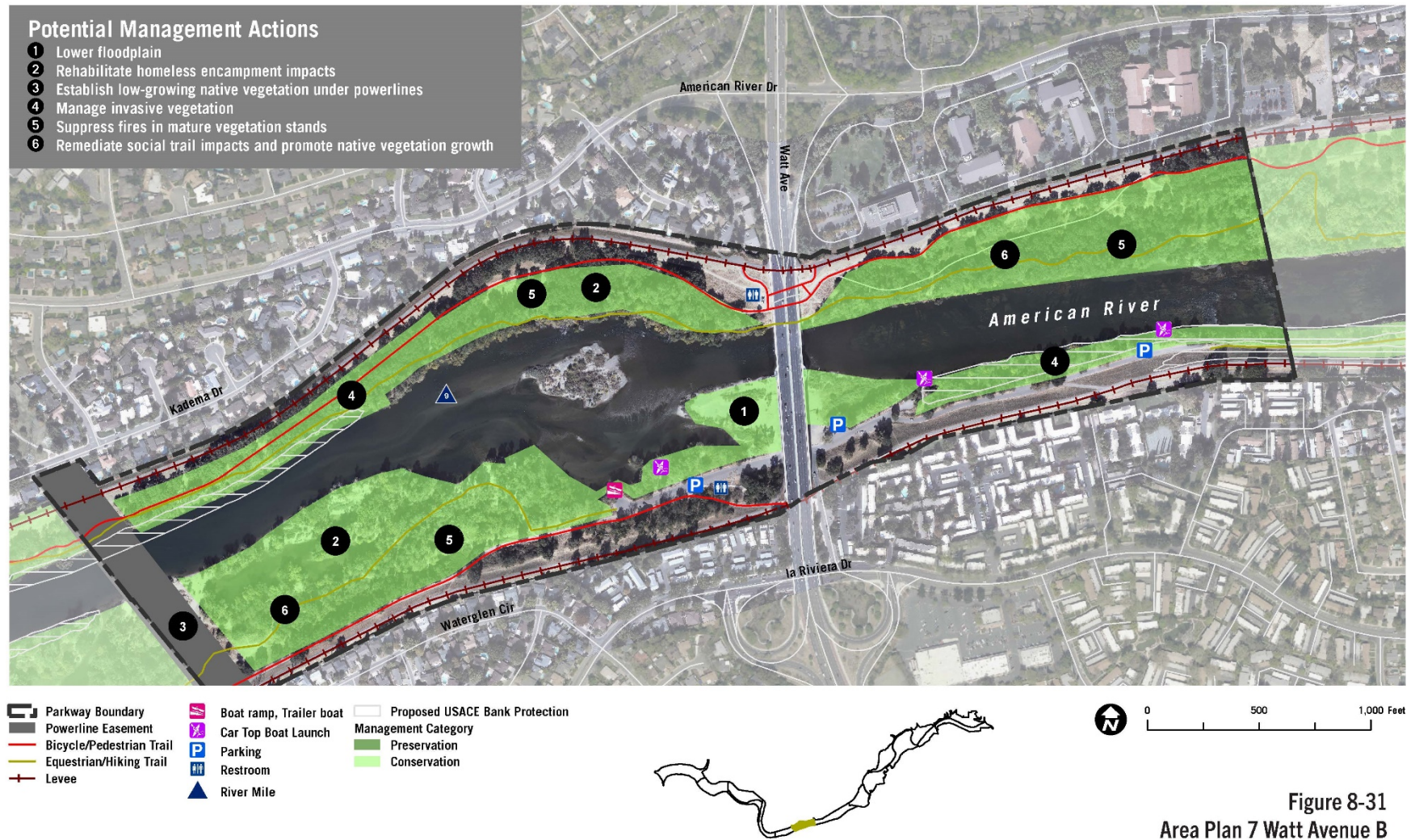


Plate NOP-10: Potential Management Actions at SARA Park

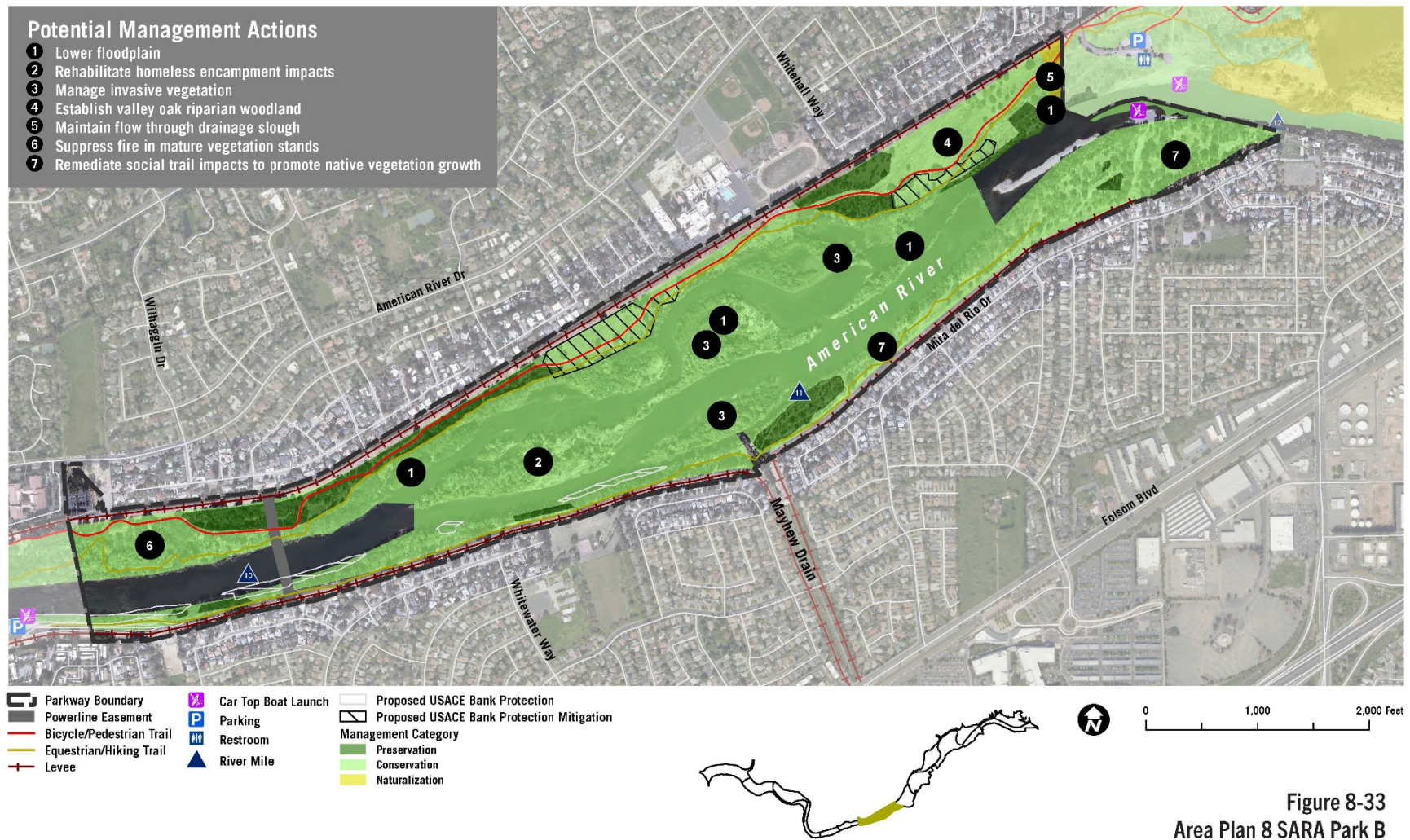


Plate NOP-11: Potential Management Actions at Arden Bar

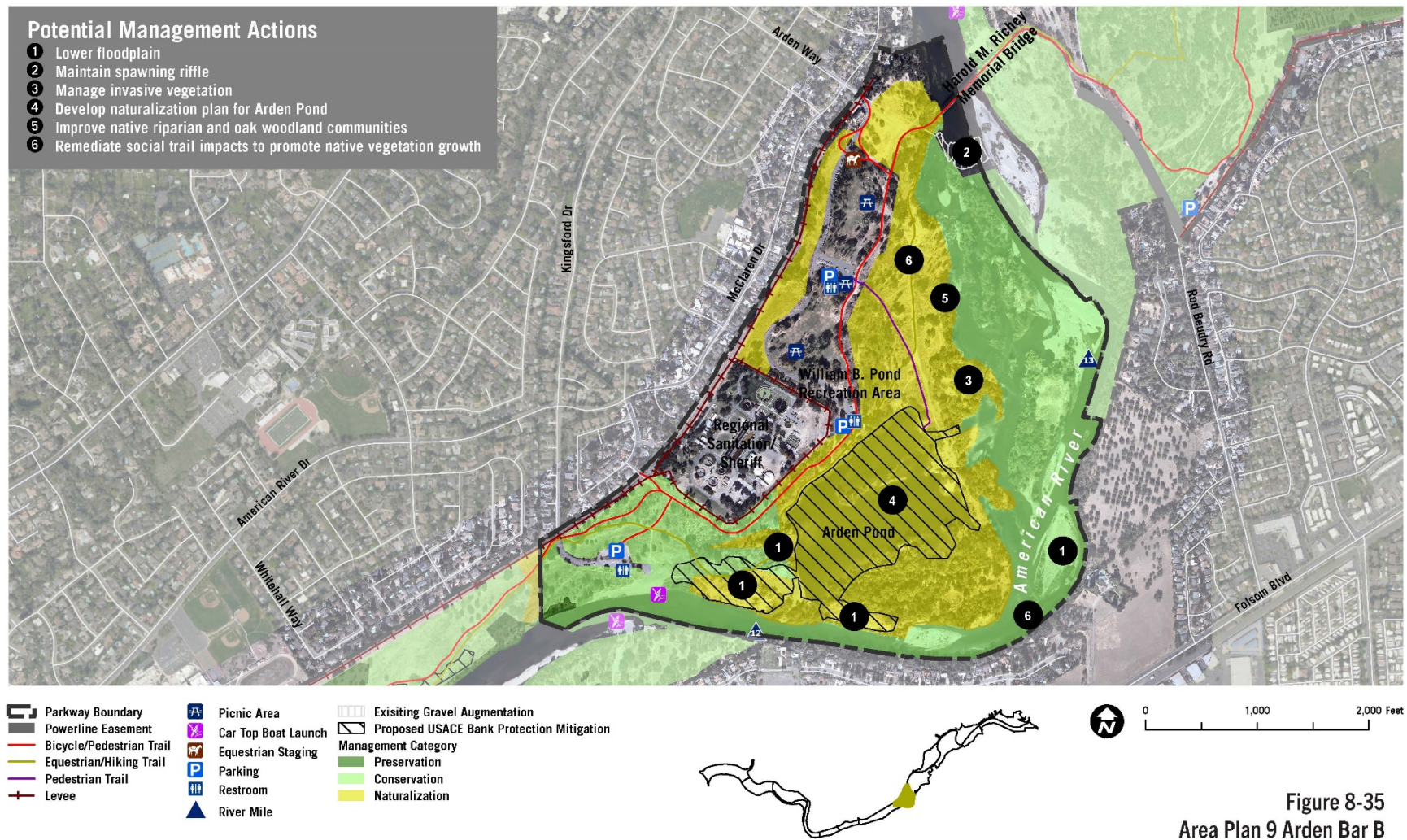


Figure 8-35
Area Plan 9 Arden Bar B

Plate NOP-12: Potential Management Actions at River Bend Park

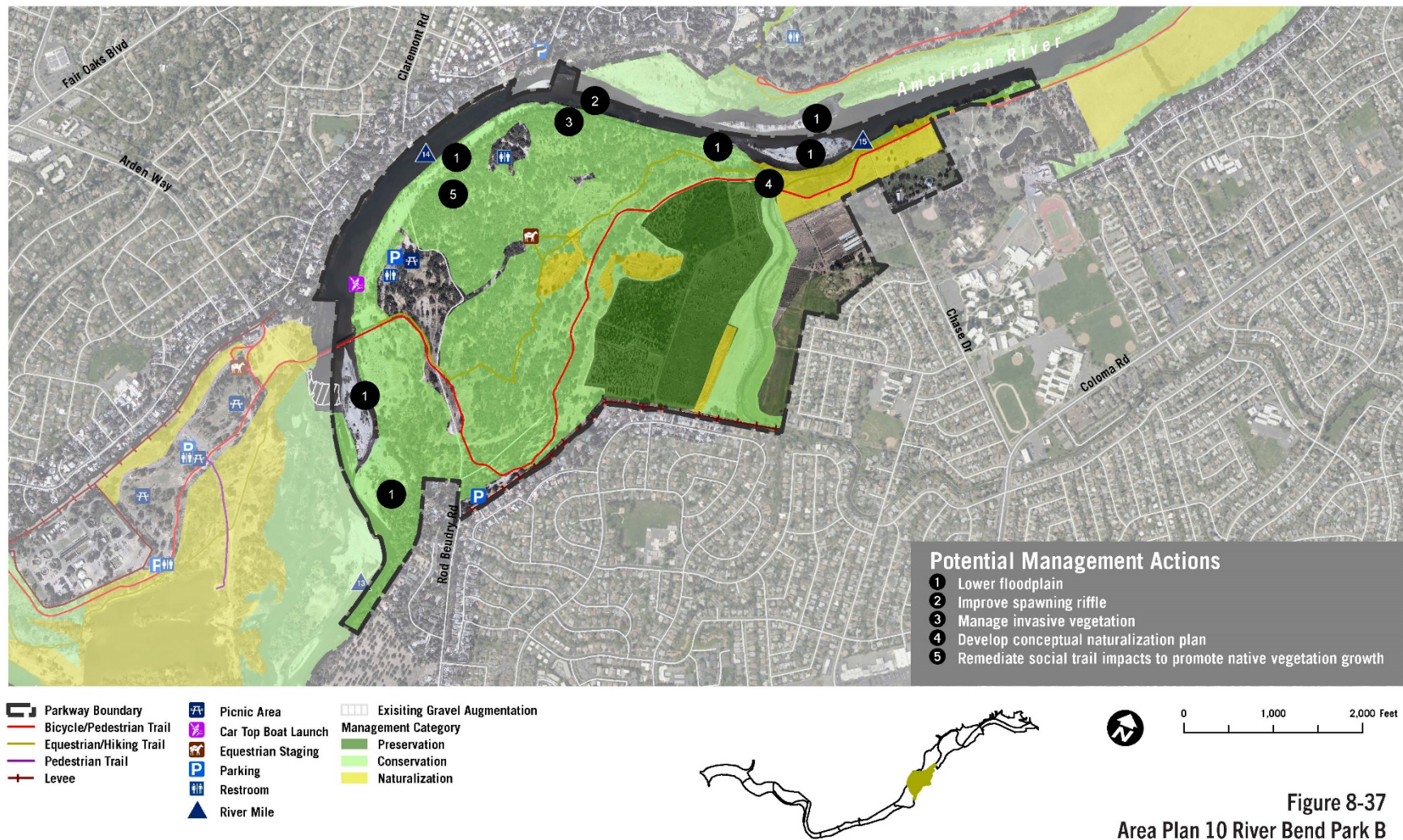


Figure 8-37
Area Plan 10 River Bend Park B

Plate NOP-13: Potential Management Actions at Sarah Court Access

AREA PLAN 11 SARAH COURT ACCESS



Plate NOP-14: Potential Management Actions at Ancil Hoffman County Park

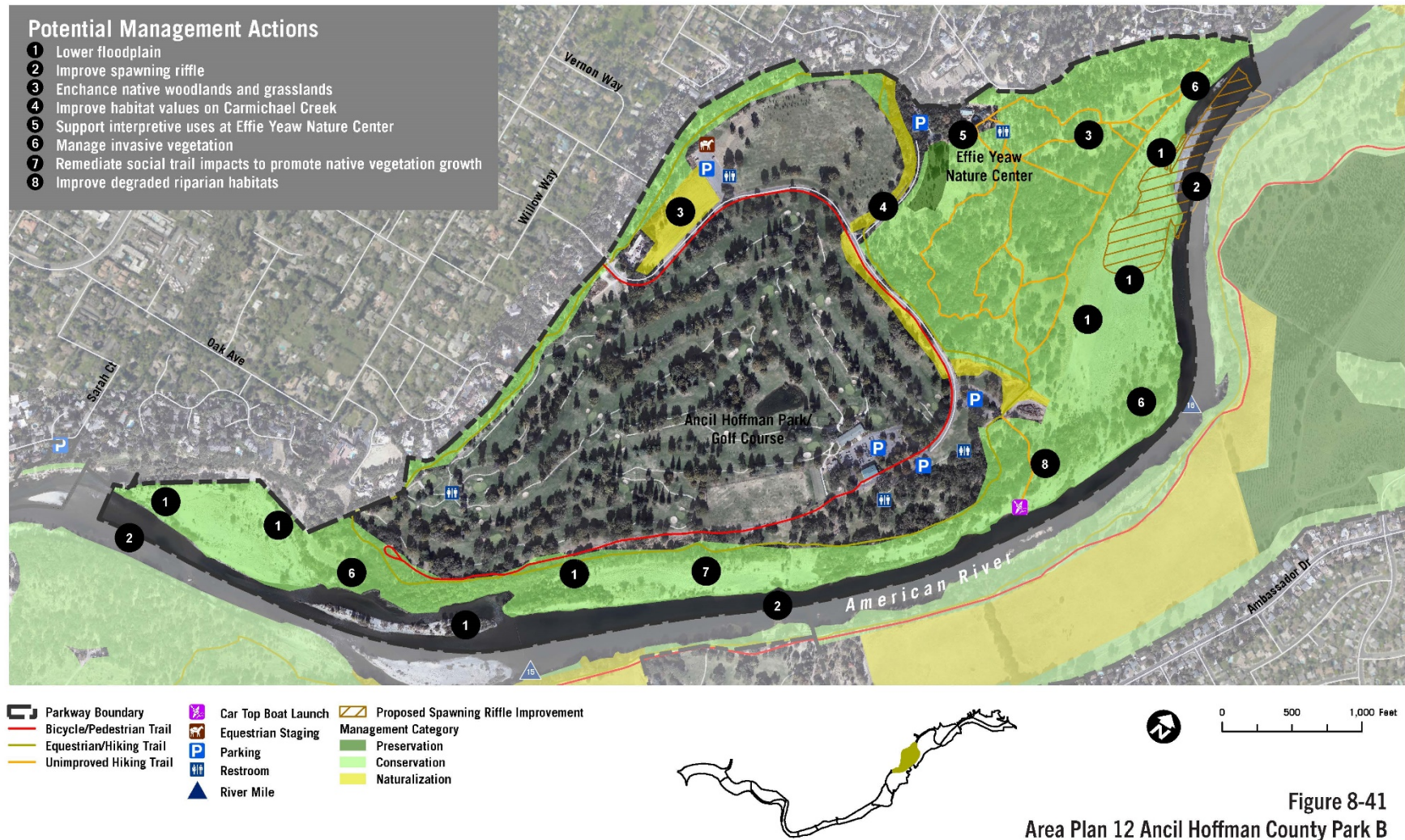


Plate NOP-15: Potential Management Actions at Rossmoor Bar

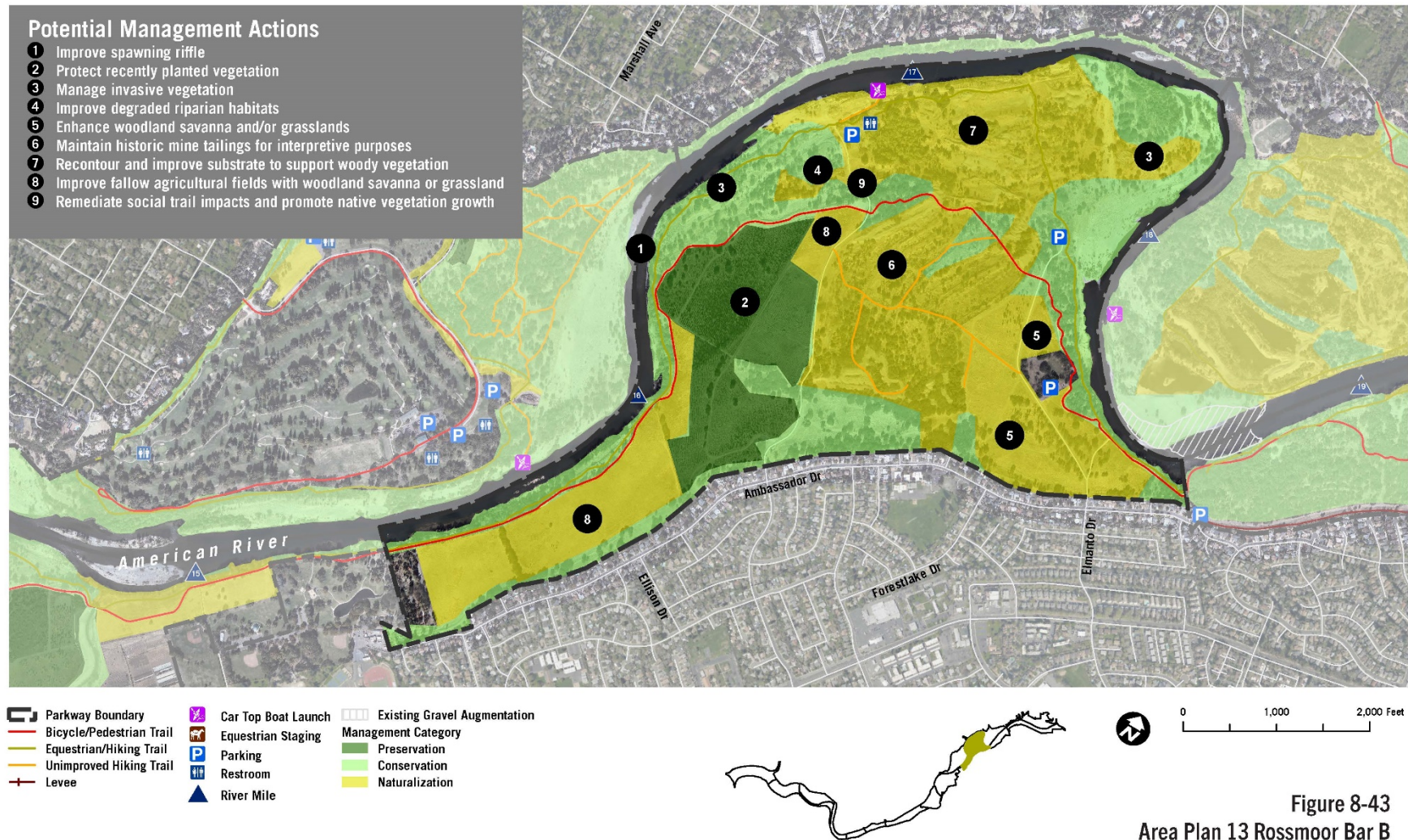


Plate NOP-16: Potential Management Actions at San Juan Bluffs

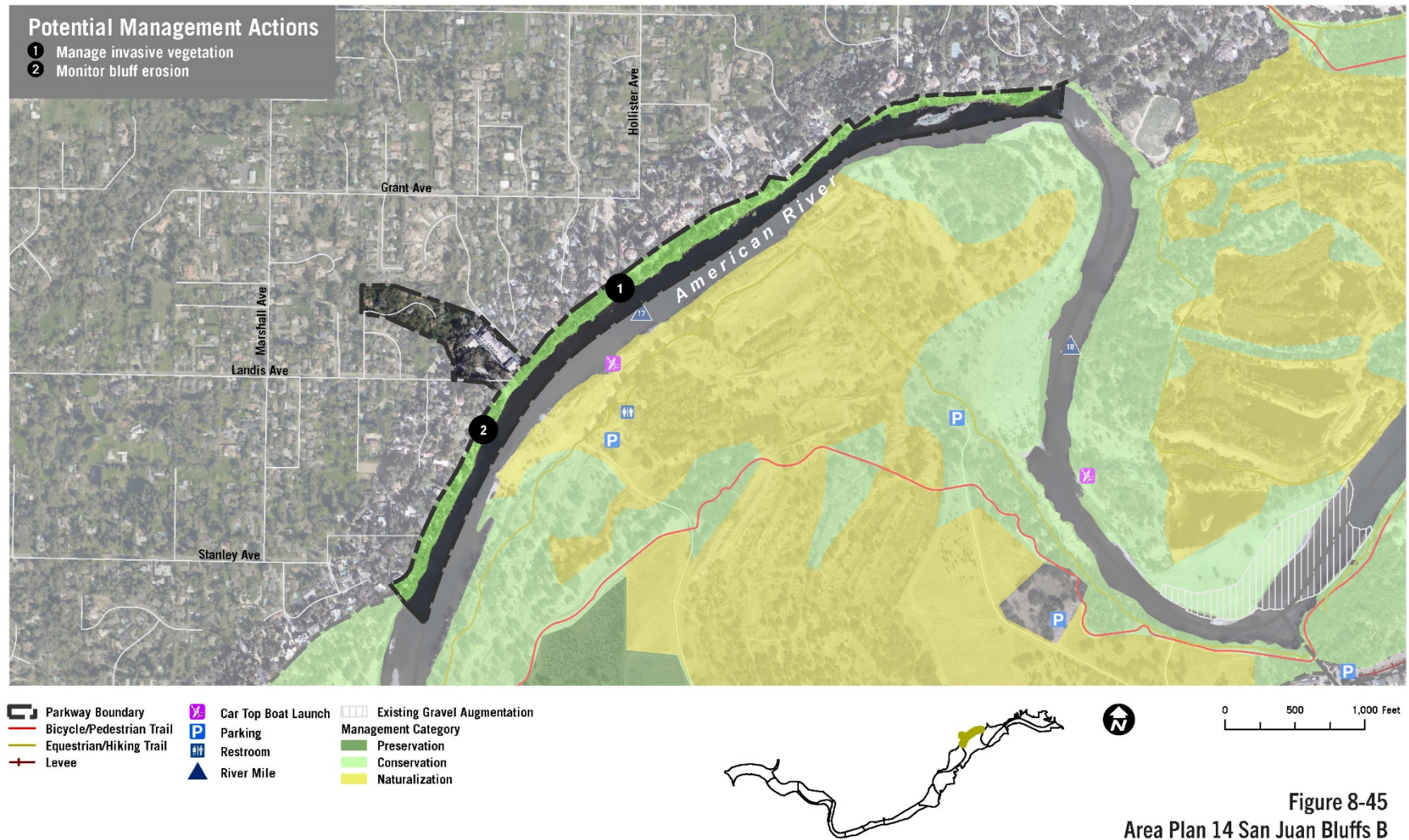


Plate NOP-17: Potential Management Actions at Sacramento Bar

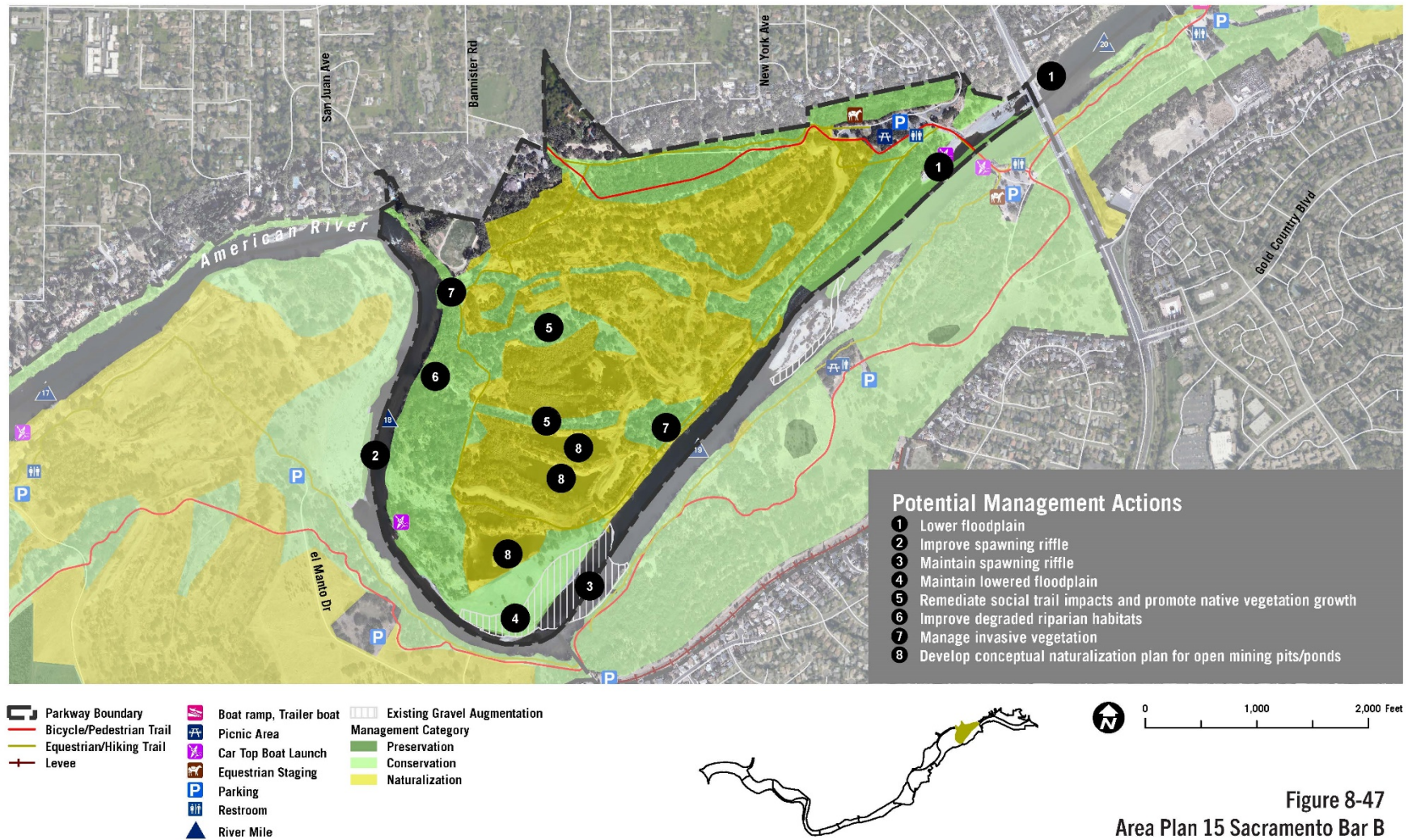


Figure 8-47
Area Plan 15 Sacramento Bar B

Plate NOP-18: Potential Management Actions at Lower Sunrise

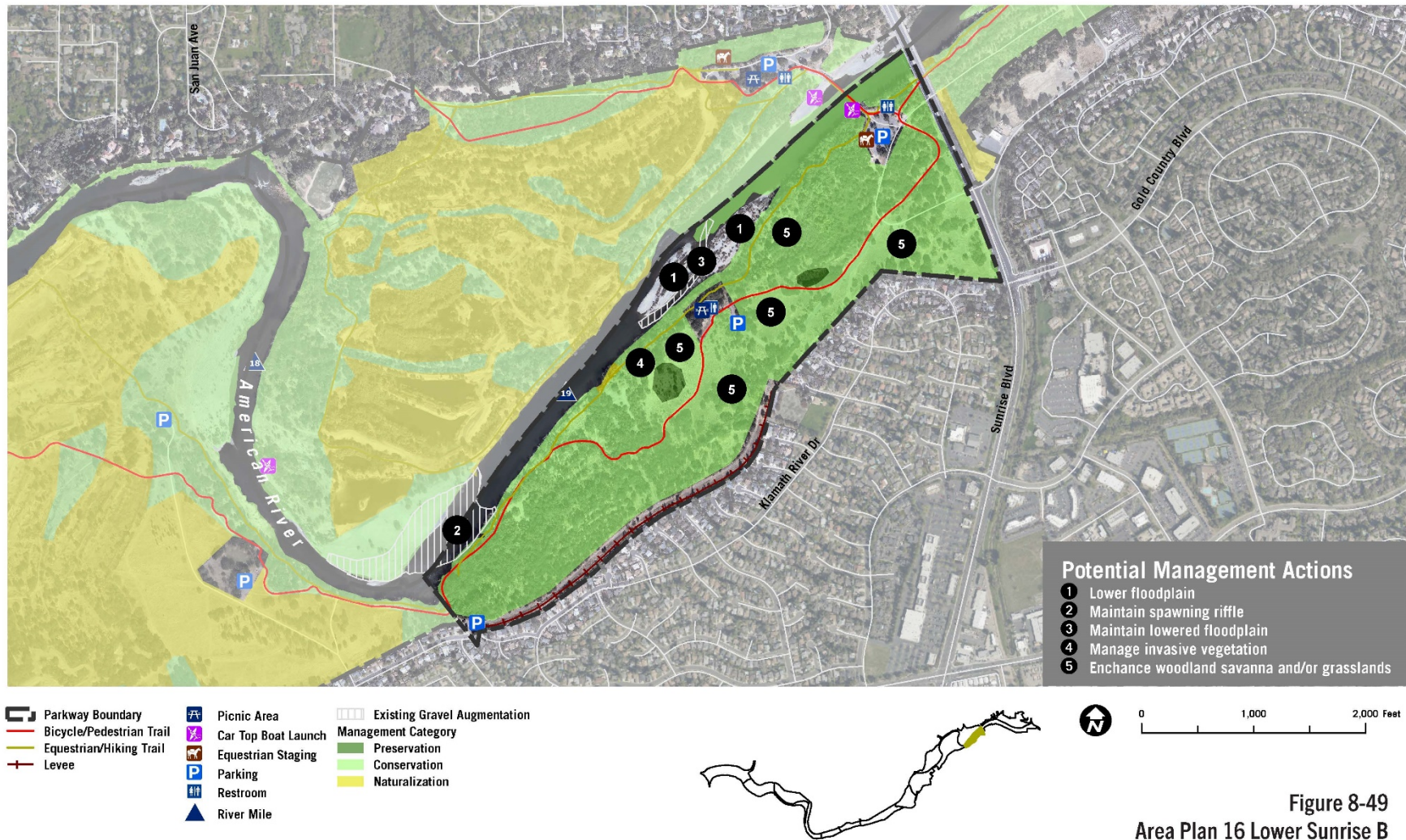


Figure 8-49
Area Plan 16 Lower Sunrise B

Plate NOP-19: Potential Management Actions at Sunrise Bluffs

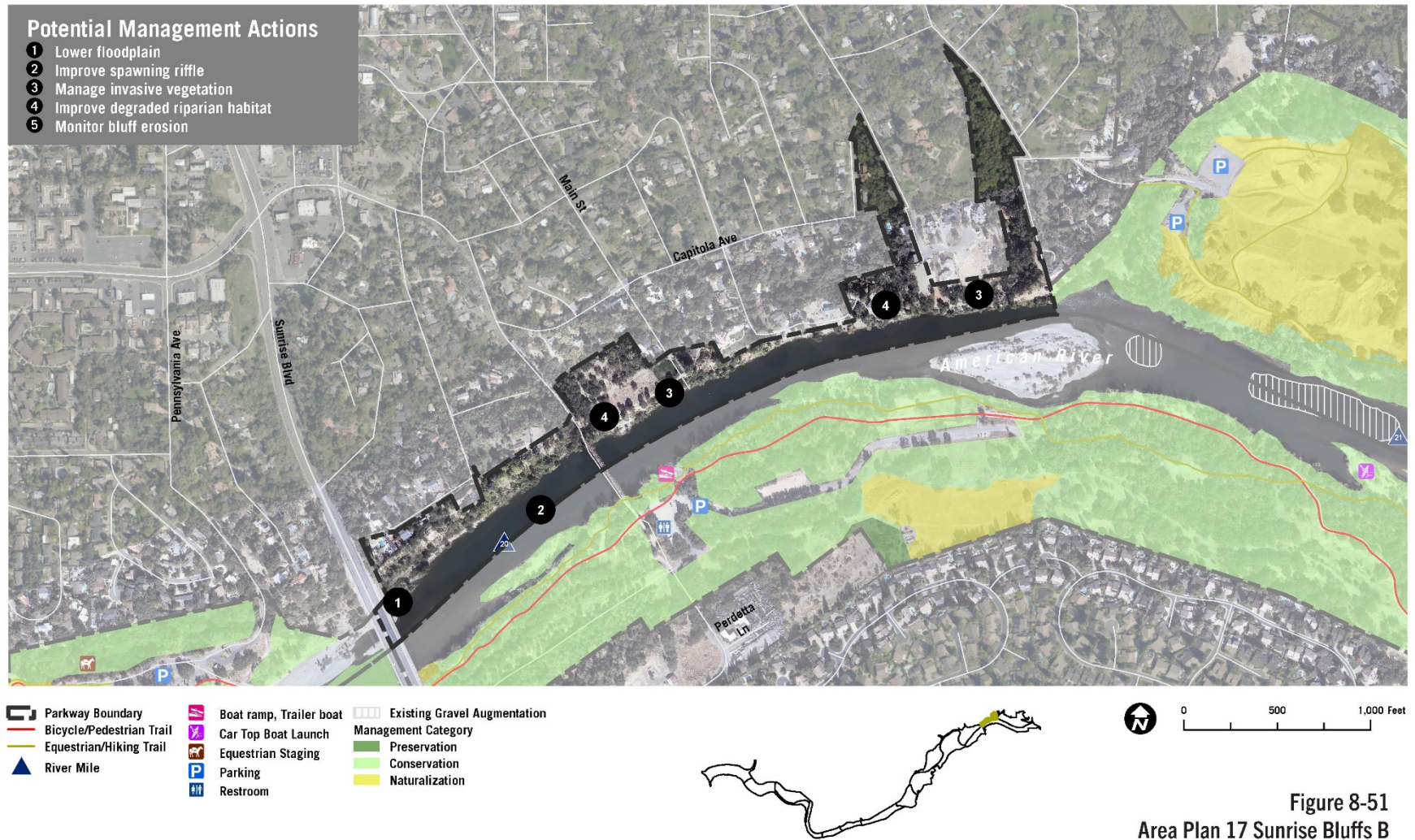


Plate NOP-20: Potential Management Actions at Upper Sunrise

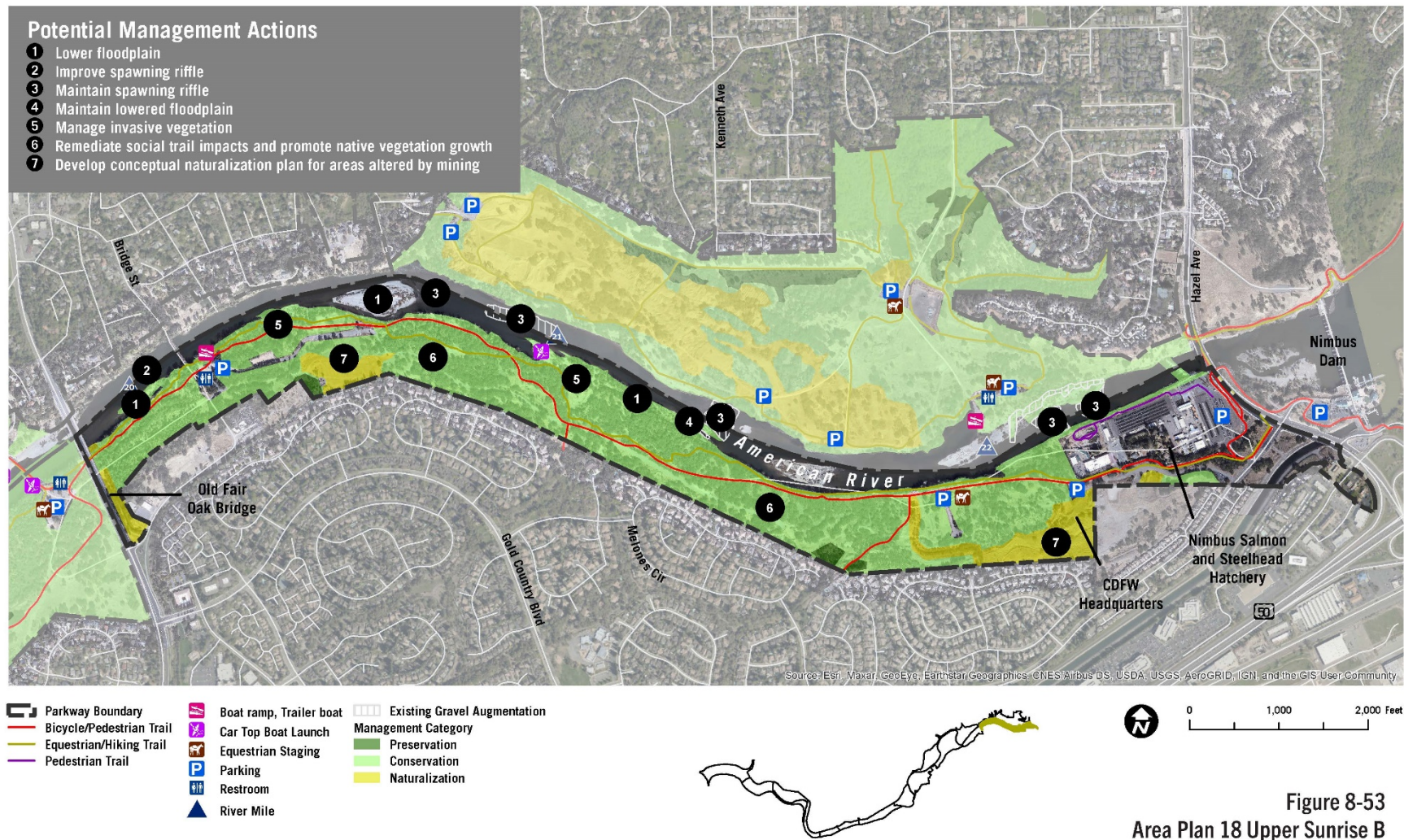


Figure 8-53
Area Plan 18 Upper Sunrise B

Plate NOP-21: Potential Management Actions at Sailor Bar

