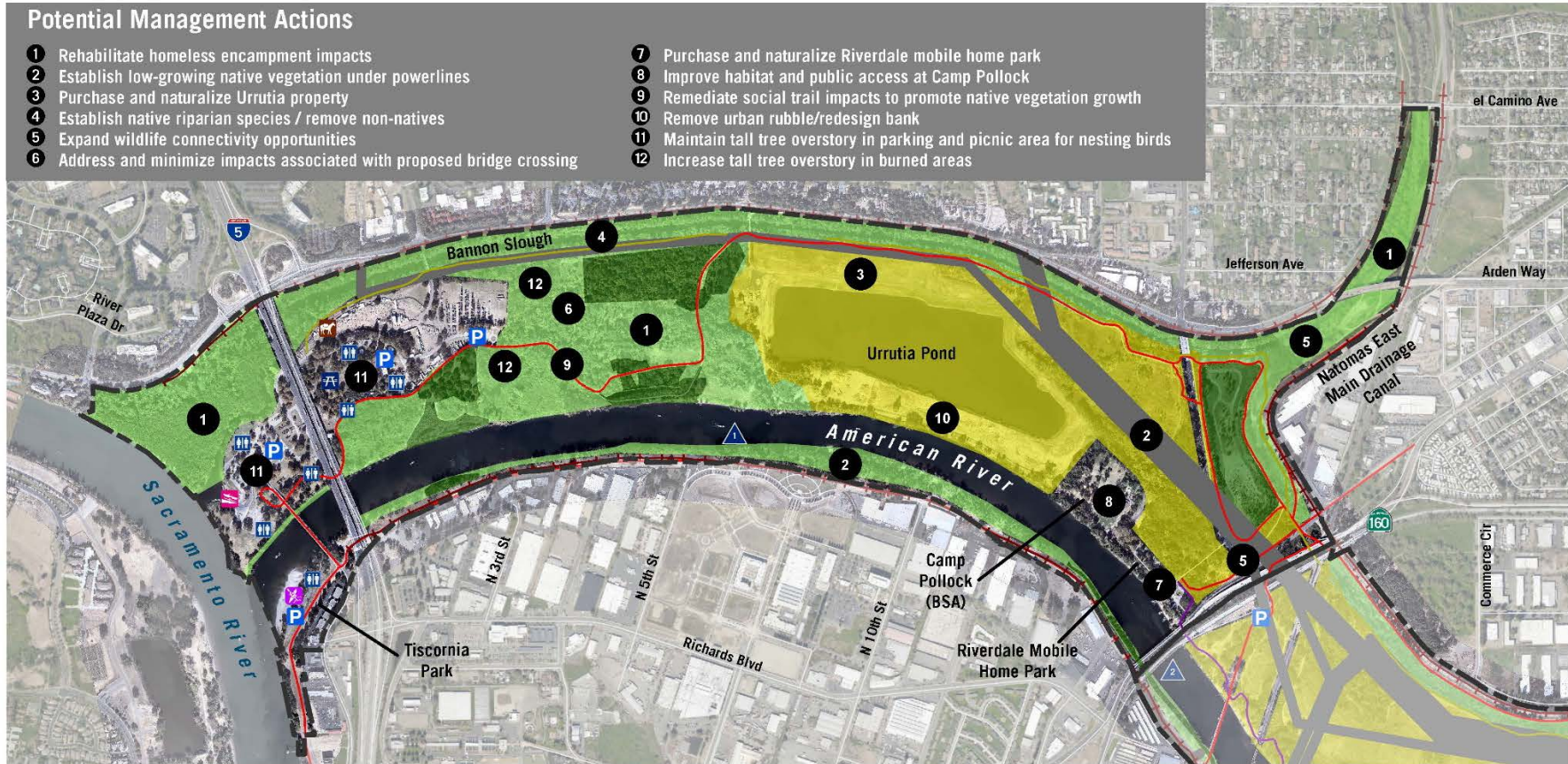


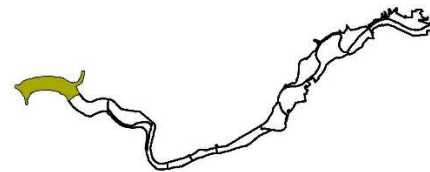
Plate PD-1: Potential Management Actions at Discovery Park

Potential Management Actions

- 1 Rehabilitate homeless encampment impacts
- 2 Establish low-growing native vegetation under powerlines
- 3 Purchase and naturalize Urrutia property
- 4 Establish native riparian species / remove non-natives
- 5 Expand wildlife connectivity opportunities
- 6 Address and minimize impacts associated with proposed bridge crossing
- 7 Purchase and naturalize Riverdale mobile home park
- 8 Improve habitat and public access at Camp Pollock
- 9 Remediate social trail impacts to promote native vegetation growth
- 10 Remove urban rubble/redesign bank
- 11 Maintain tall tree overstory in parking and picnic area for nesting birds
- 12 Increase tall tree overstory in burned areas



- | | | |
|--------------------------|-------------------------|---------------------|
| Parkway Boundary | Boat ramp, Trailer boat | Management Category |
| Powerline Easement | Picnic Area | Preservation |
| Bicycle/Pedestrian Trail | Car Top Boat Launch | Conservation |
| Equestrian/Hiking Trail | Equestrian Staging | Naturalization |
| Pedestrian Trail | Parking | |
| Levee | Restroom | |
| | River Mile | |



0 500 1,000 2,000 Feet

Figure 8-19
Area Plan 1 Discovery Park B

Plate PD-2: Potential Management Actions at Woodlake

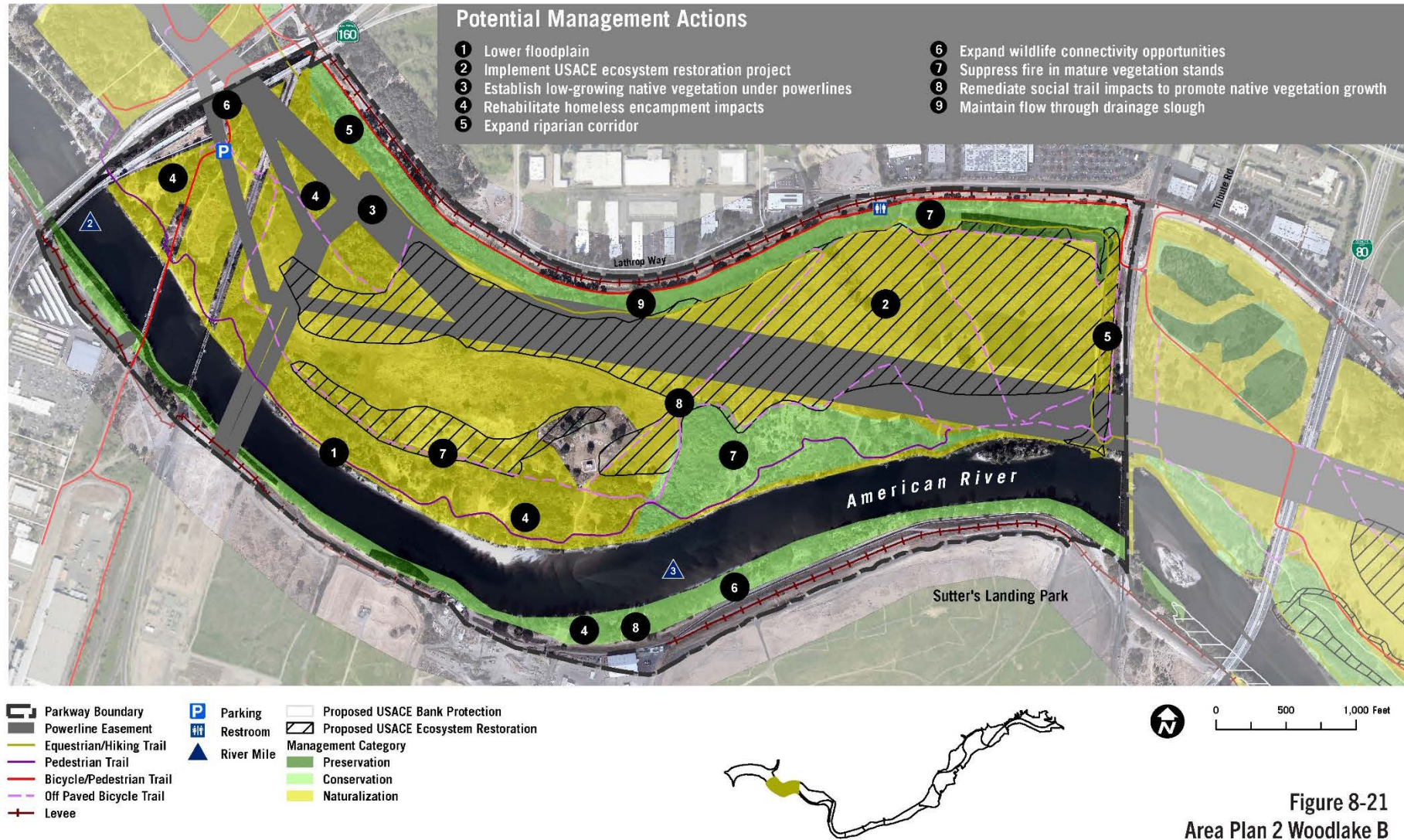


Figure 8-21
Area Plan 2 Woodlake B

Plate PD-3: Potential Management Actions at Cal Expo

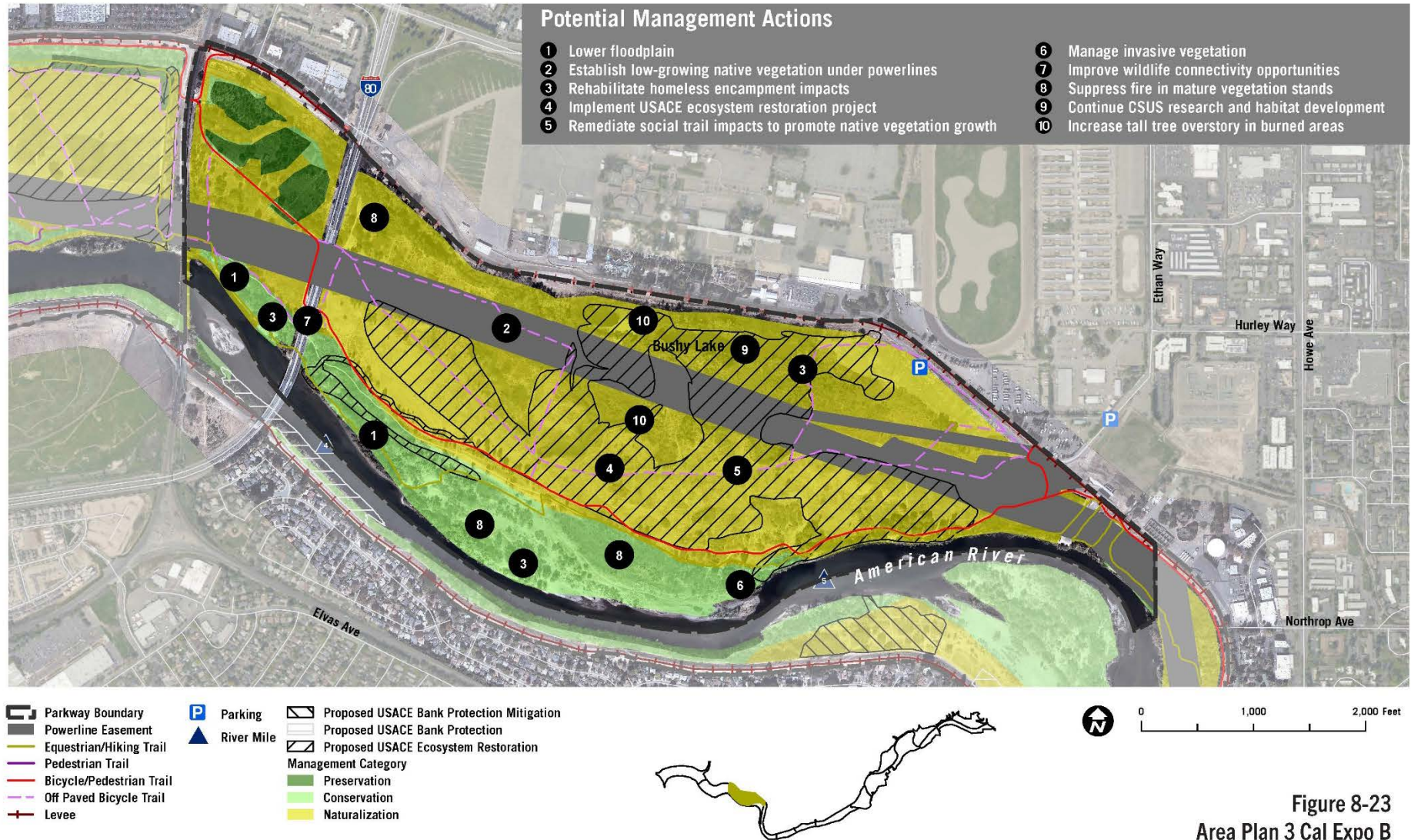


Figure 8-23
Area Plan 3 Cal Expo B

Plate PD-4: Potential Management Actions at Paradise Beach

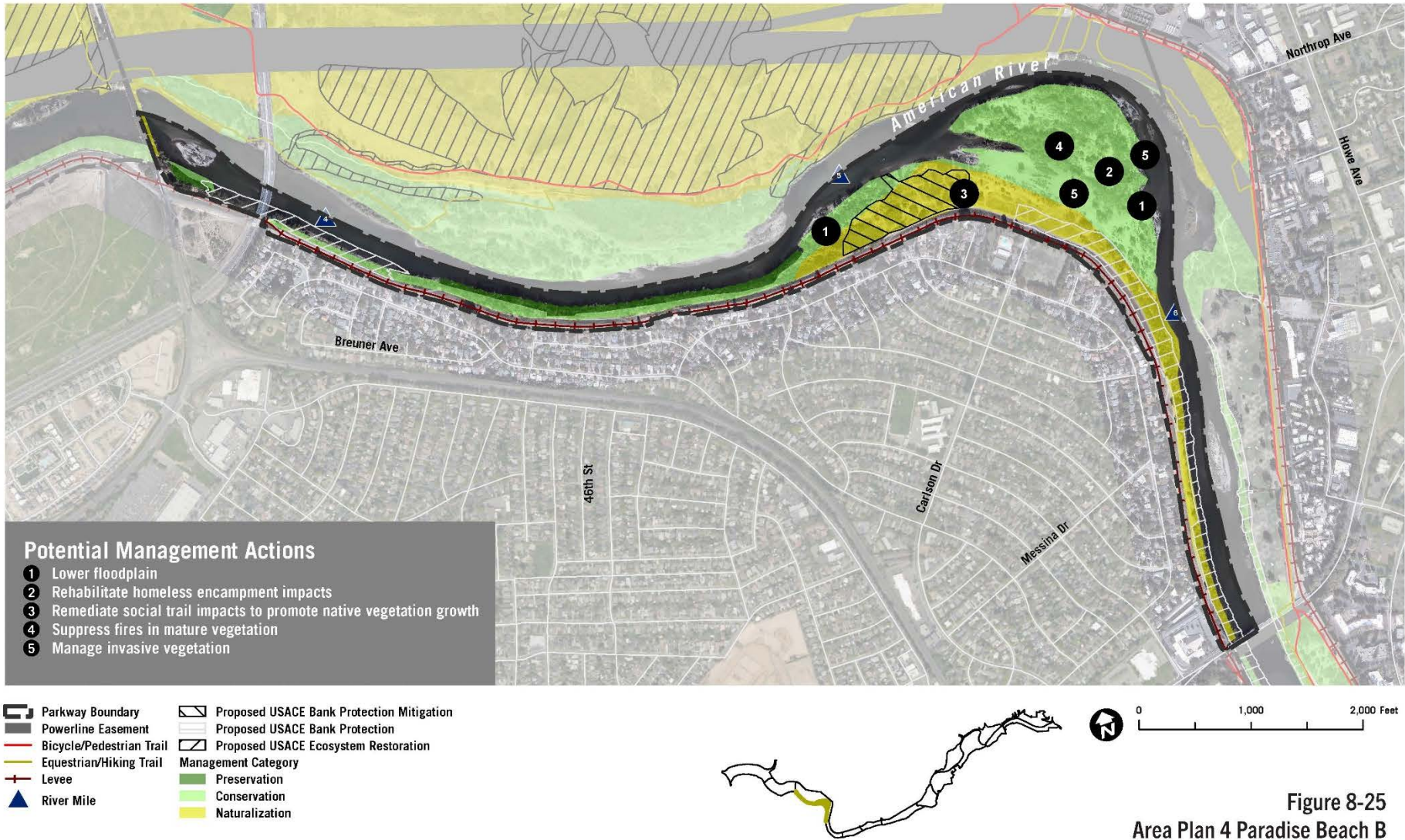


Plate PD-5: Potential Management Actions at Campus Commons

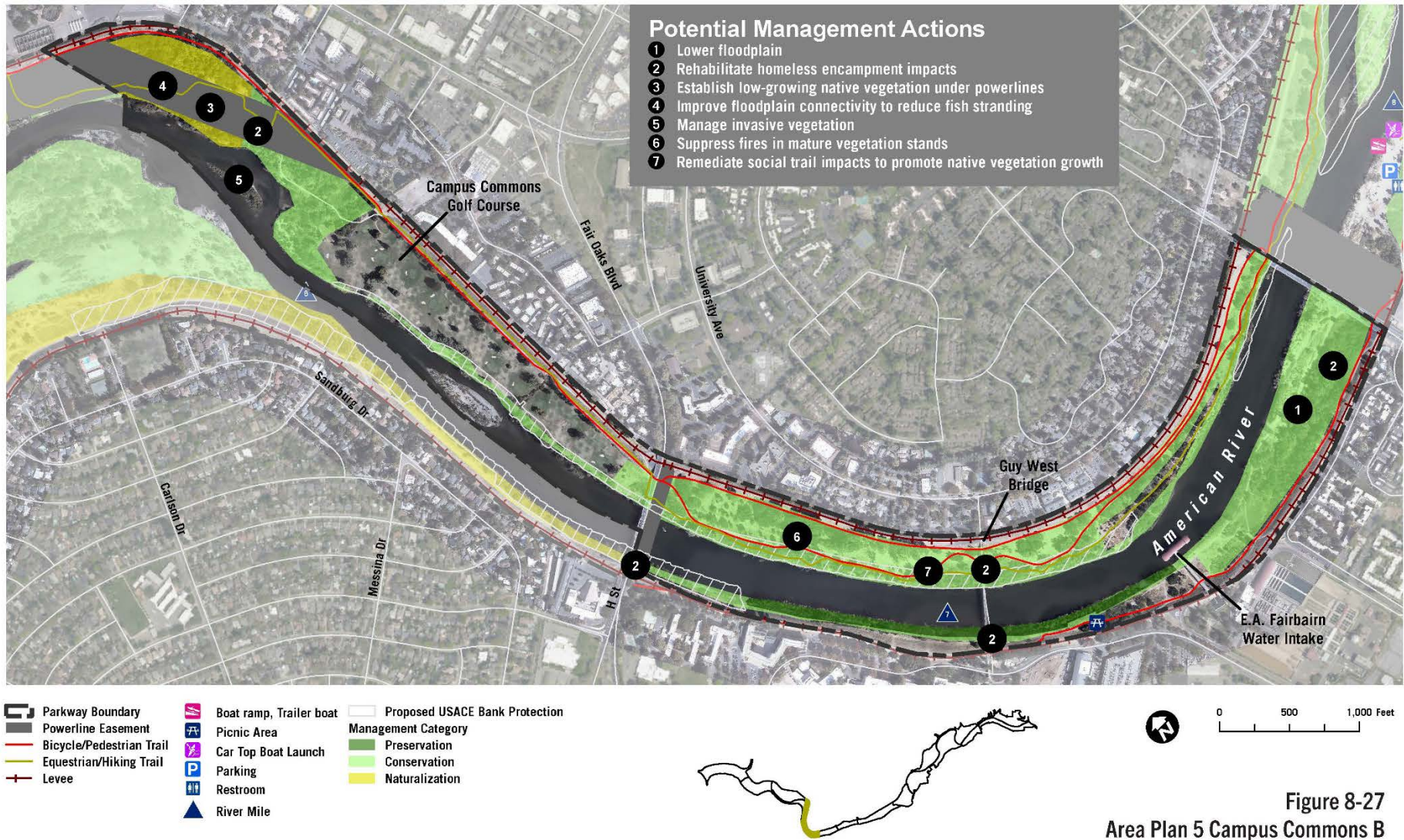


Plate PD-6: Potential Management Actions at Howe Avenue



Figure 8-29
Area Plan 6 Howe Avenue B

Plate PD-7: Potential Management Actions at Watt Avenue

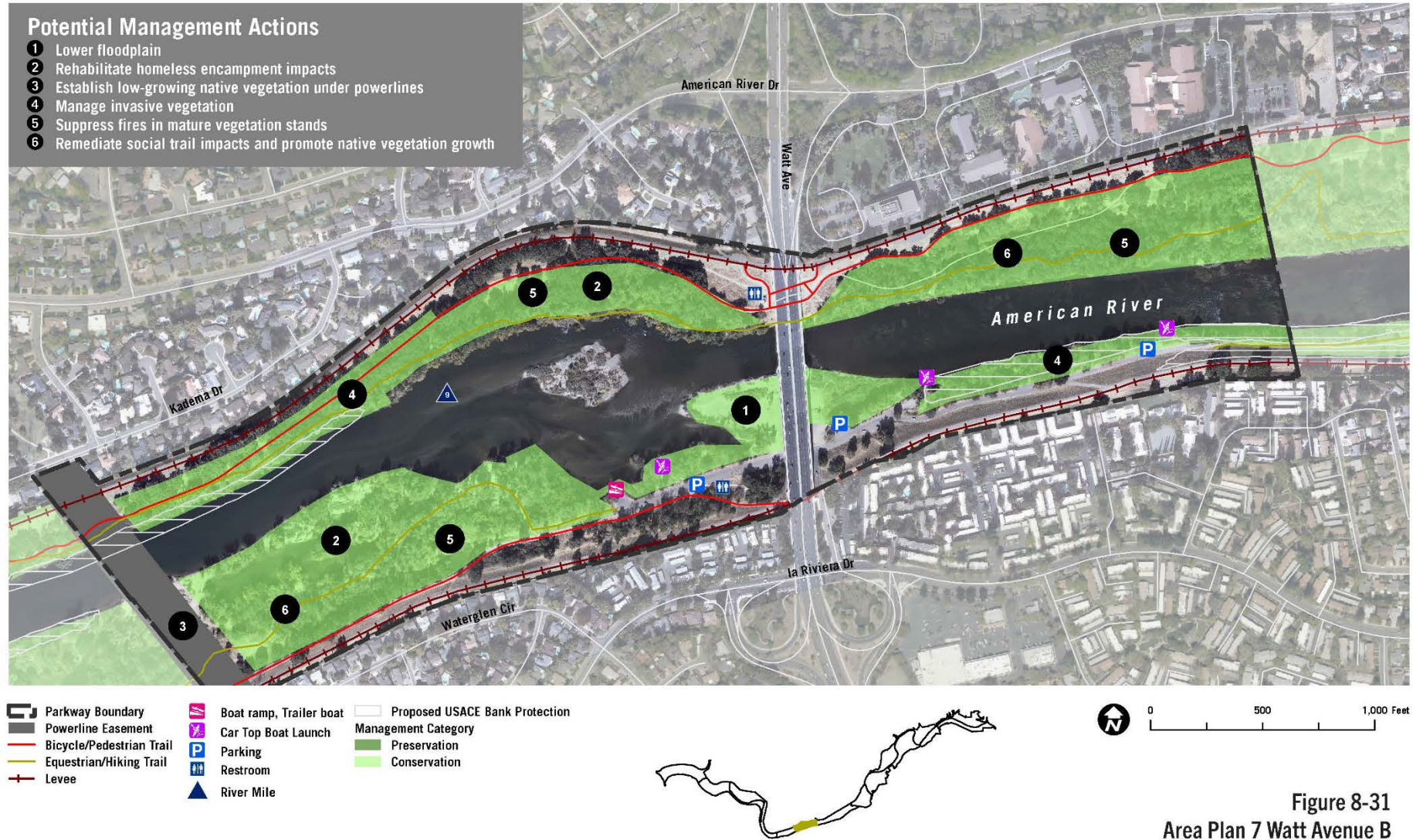


Plate PD-8: Potential Management Actions at SARA Park



Plate PD-9: Potential Management Actions at Arden Bar

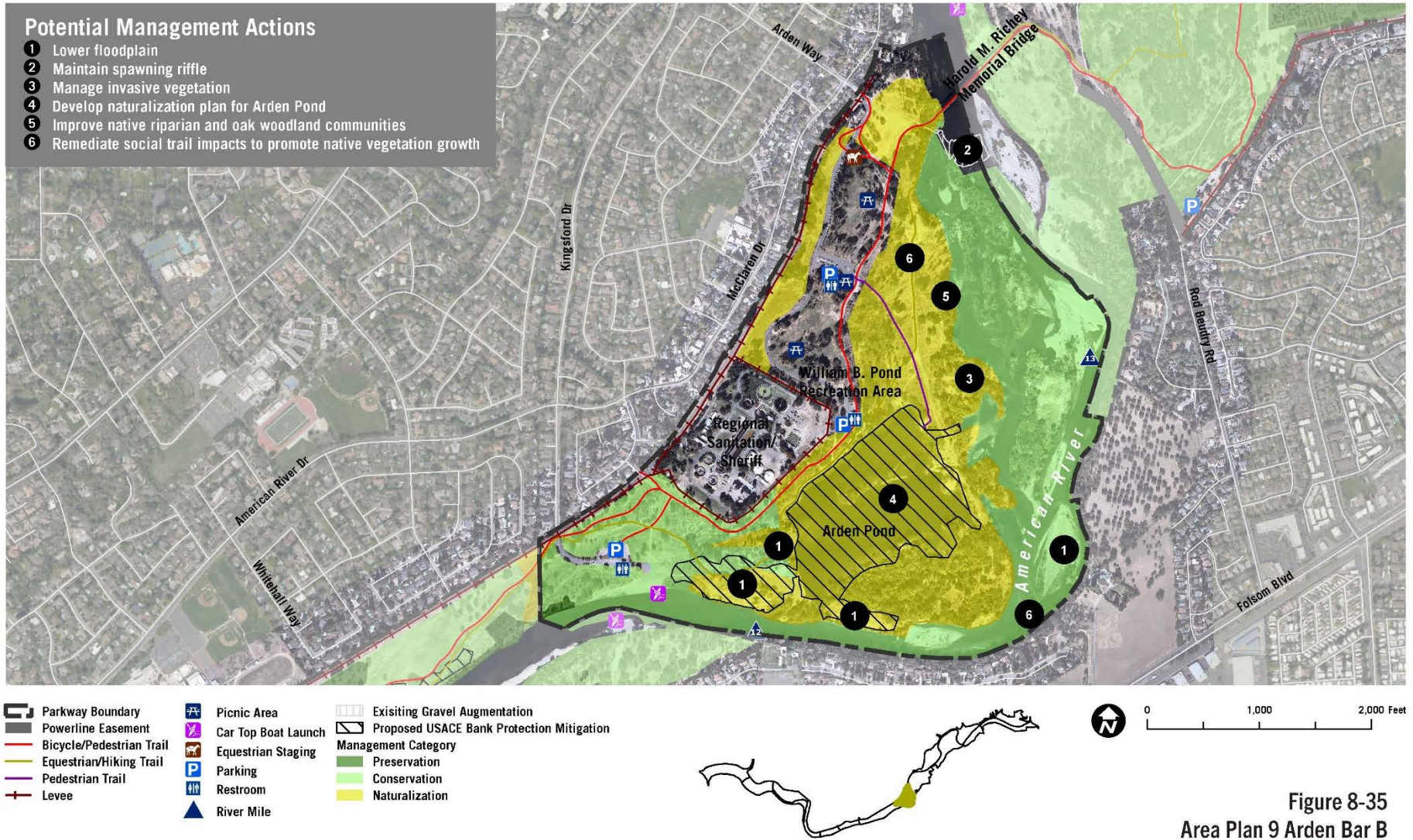


Plate PD-10: Potential Management Actions at River Bend Park

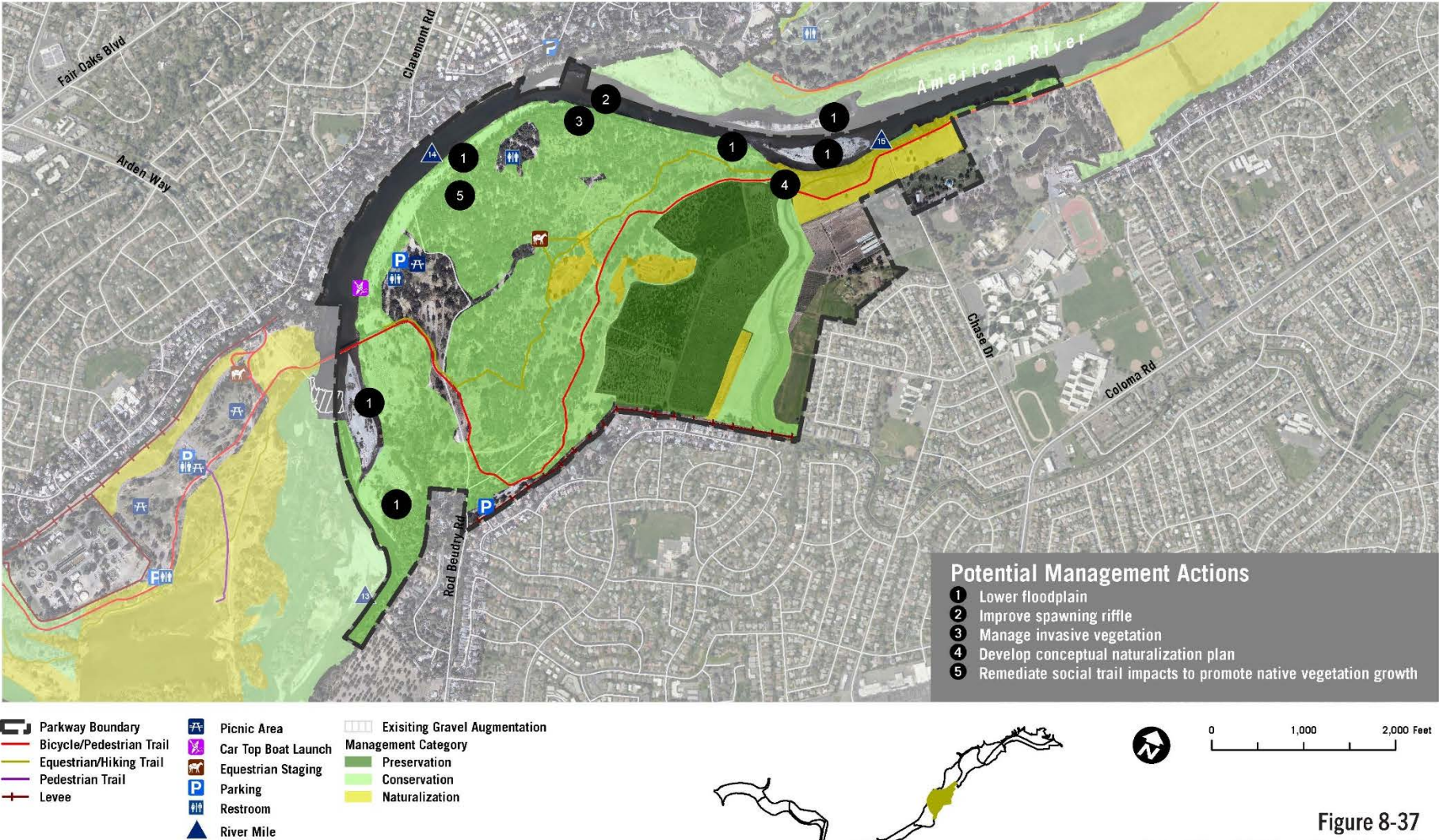


Figure 8-37
Area Plan 10 River Bend Park B

Plate PD-11: Potential Management Actions at Sarah Court Access



Plate PD-12: Potential Management Actions at Ancil Hoffman County Park

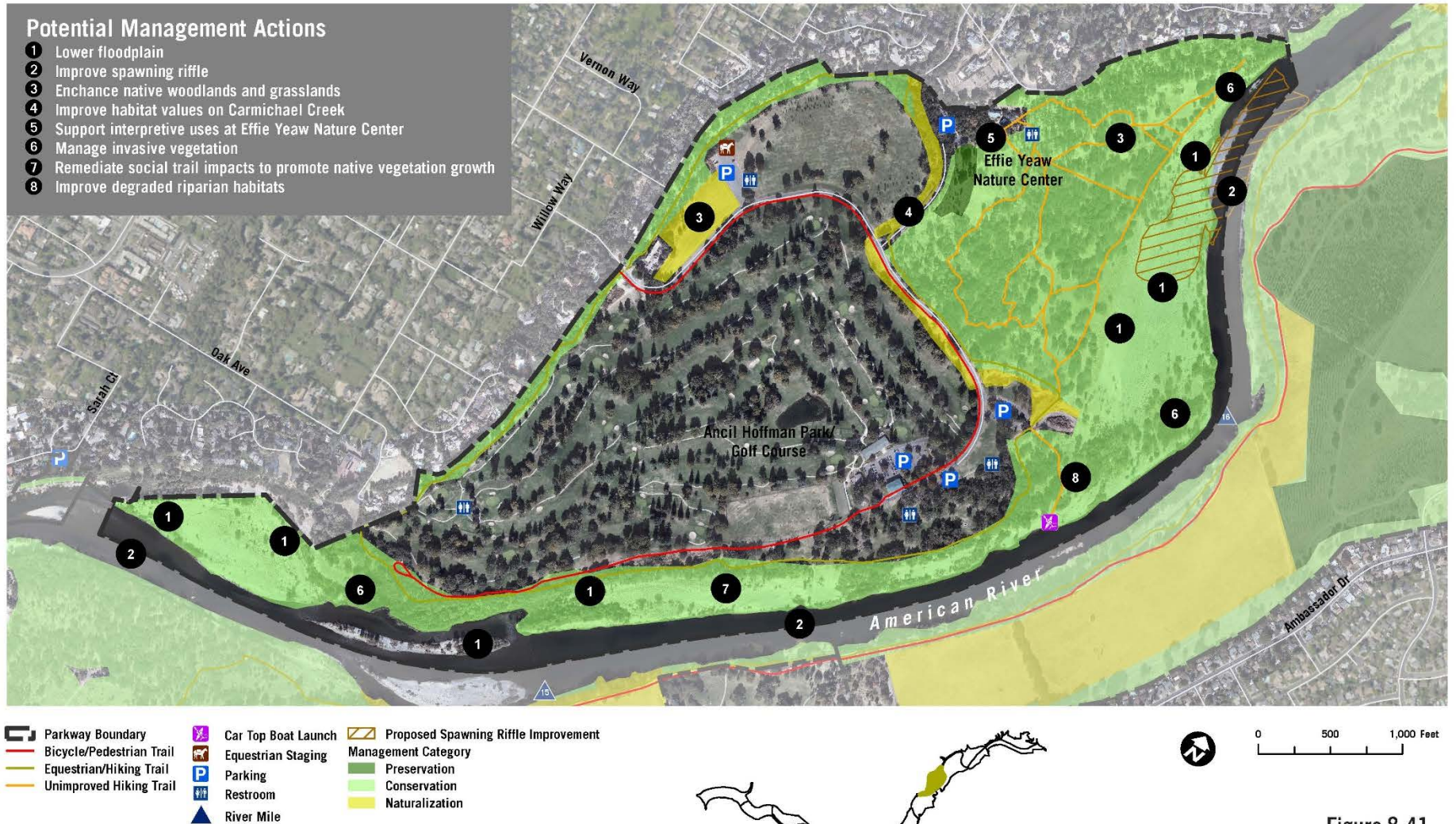


Figure 8-41
Area Plan 12 Ancil Hoffman County Park B

Plate PD-13: Potential Management Actions at Rossmoor Bar

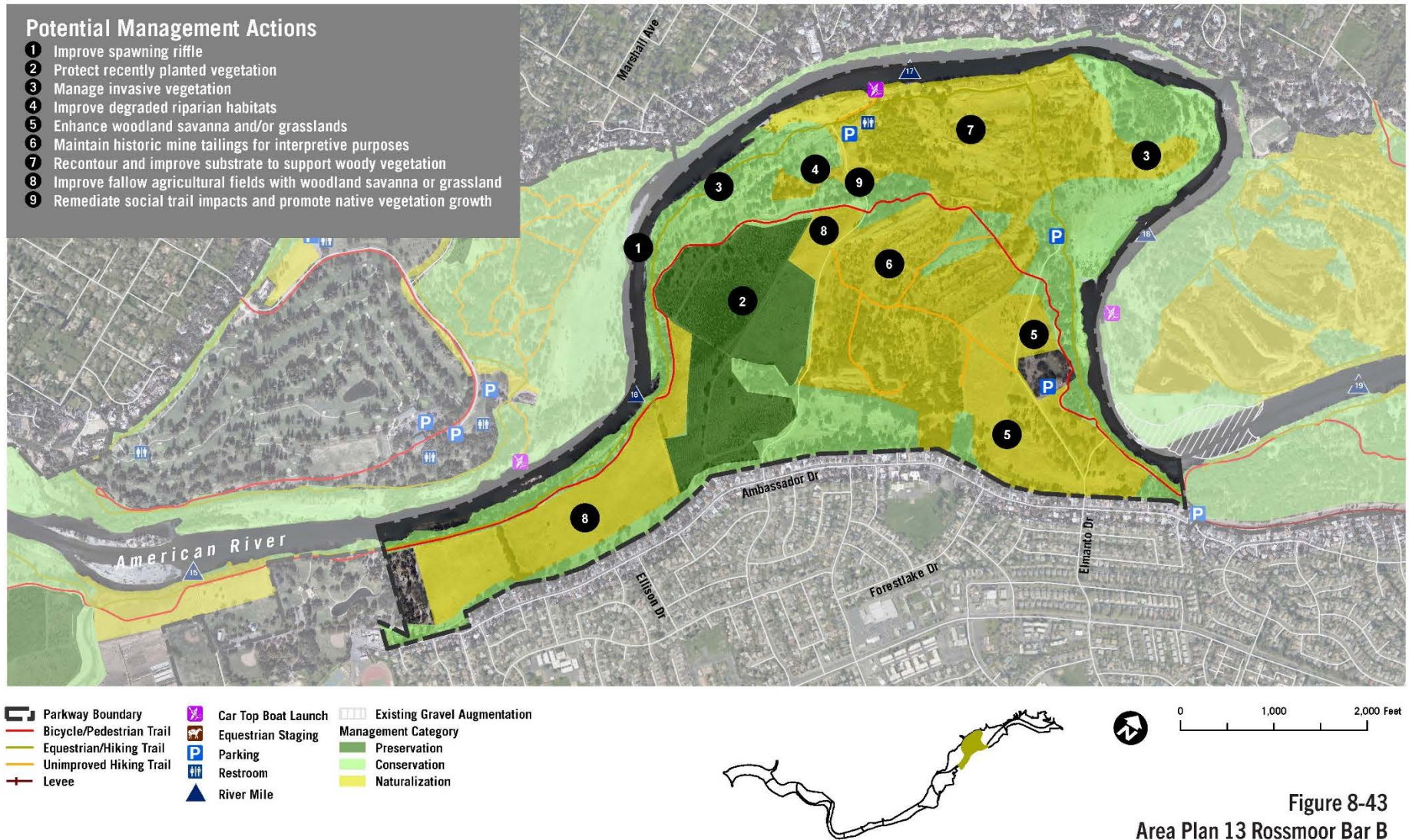


Plate PD-14: Potential Management Actions at San Juan Bluffs

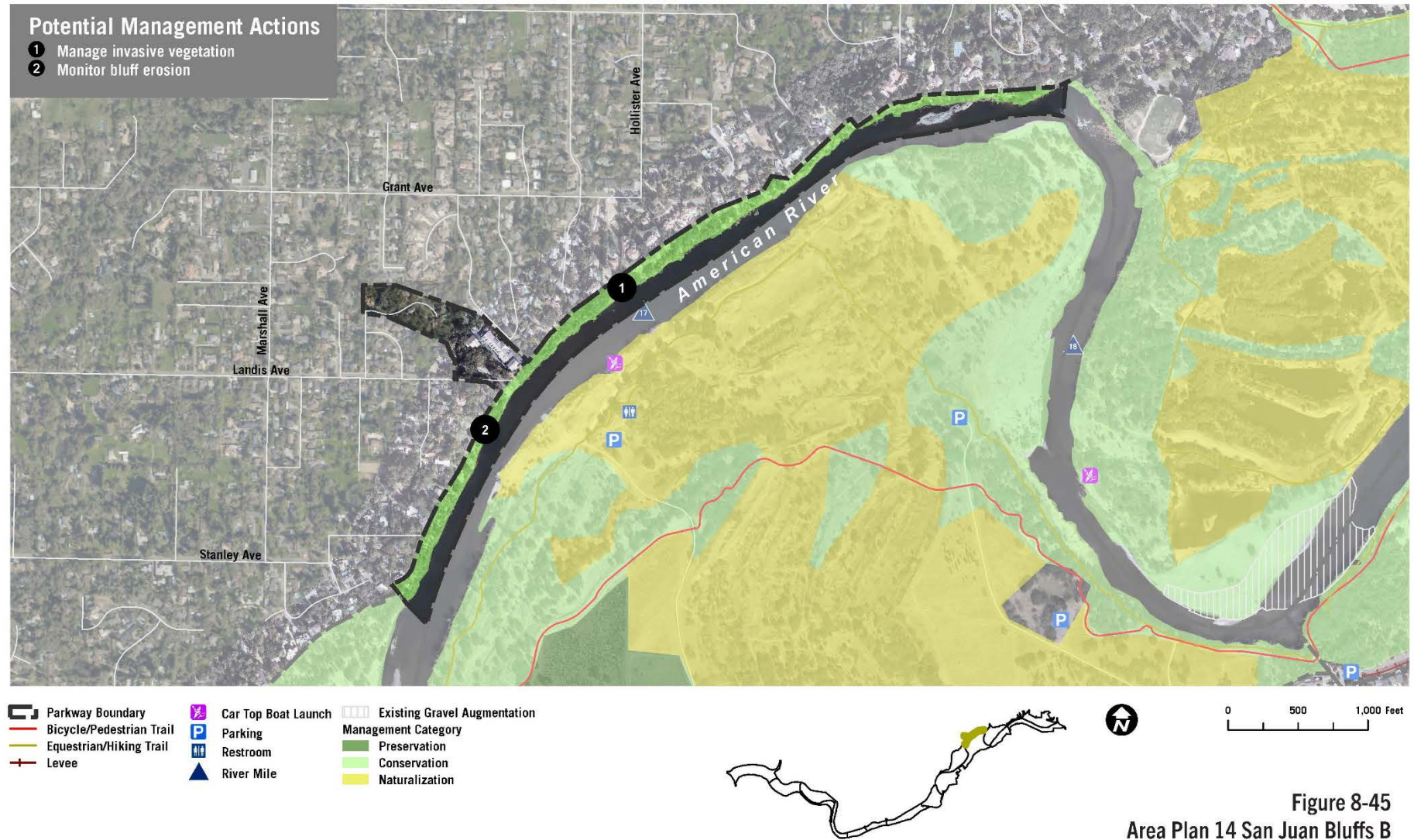


Plate PD-15: Potential Management Actions at Sacramento Bar

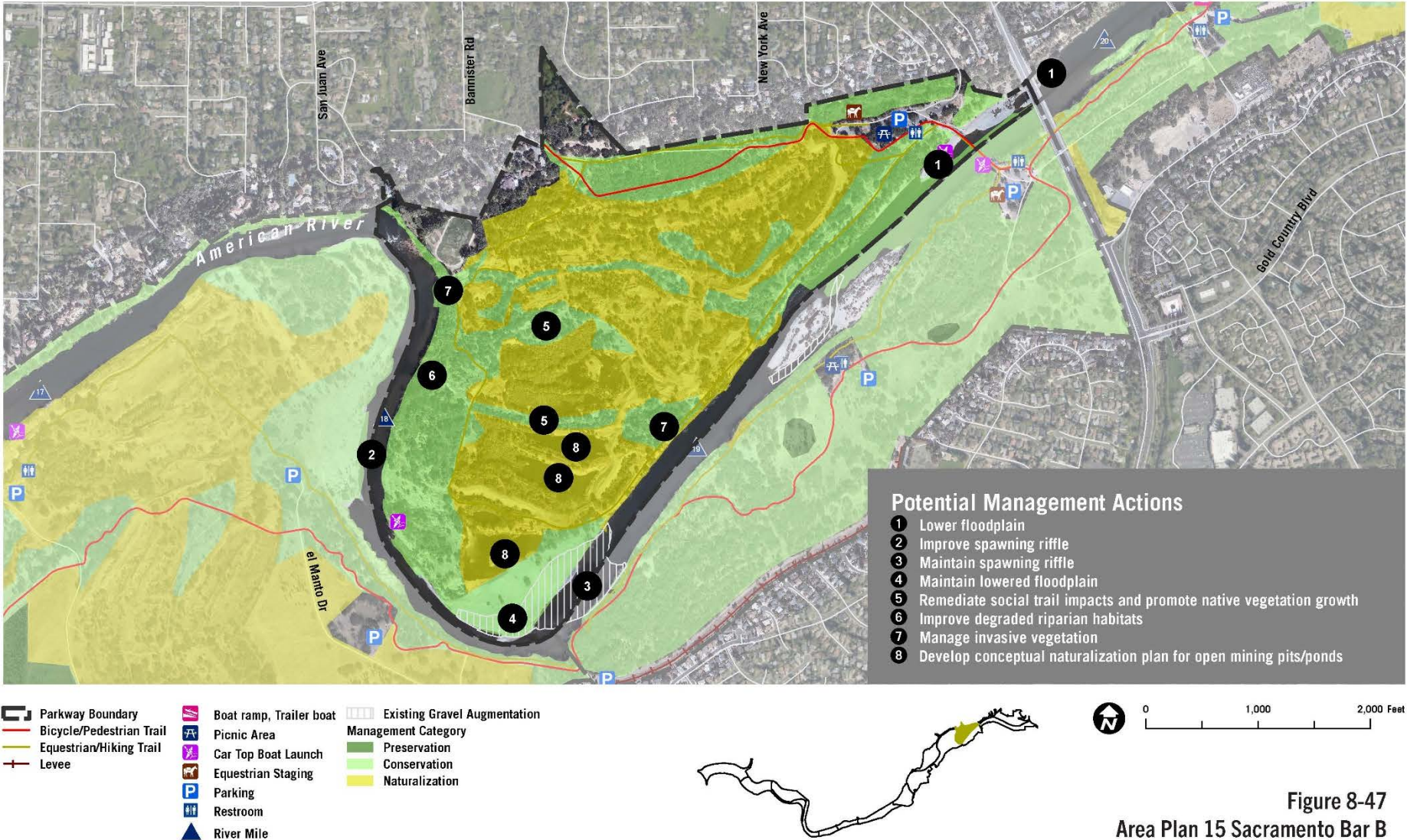


Figure 8-47
Area Plan 15 Sacramento Bar B

Plate PD-16: Potential Management Actions at Lower Sunrise

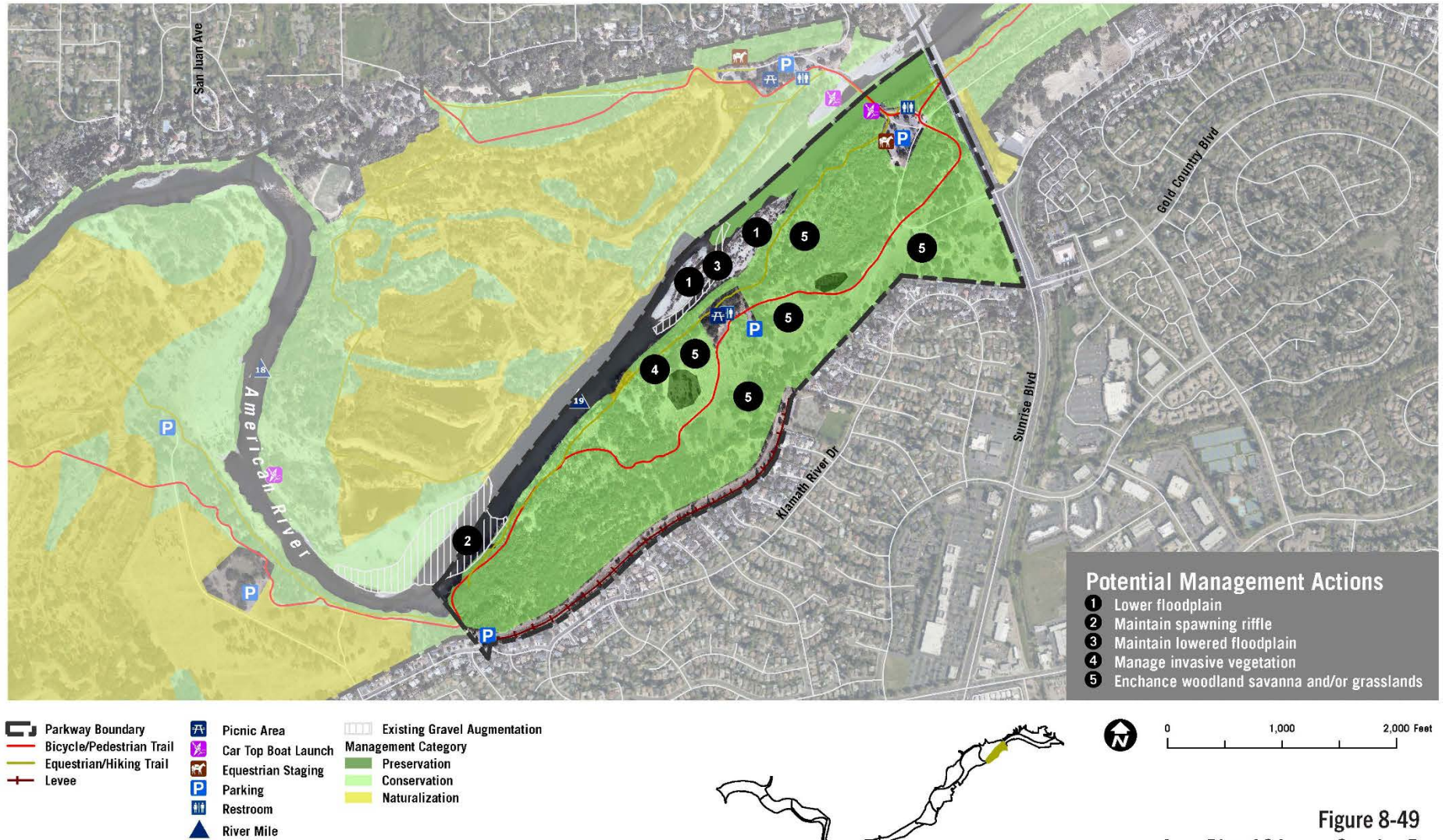


Figure 8-49
Area Plan 16 Lower Sunrise B

Plate PD-17: Potential Management Actions at Sunrise Bluffs

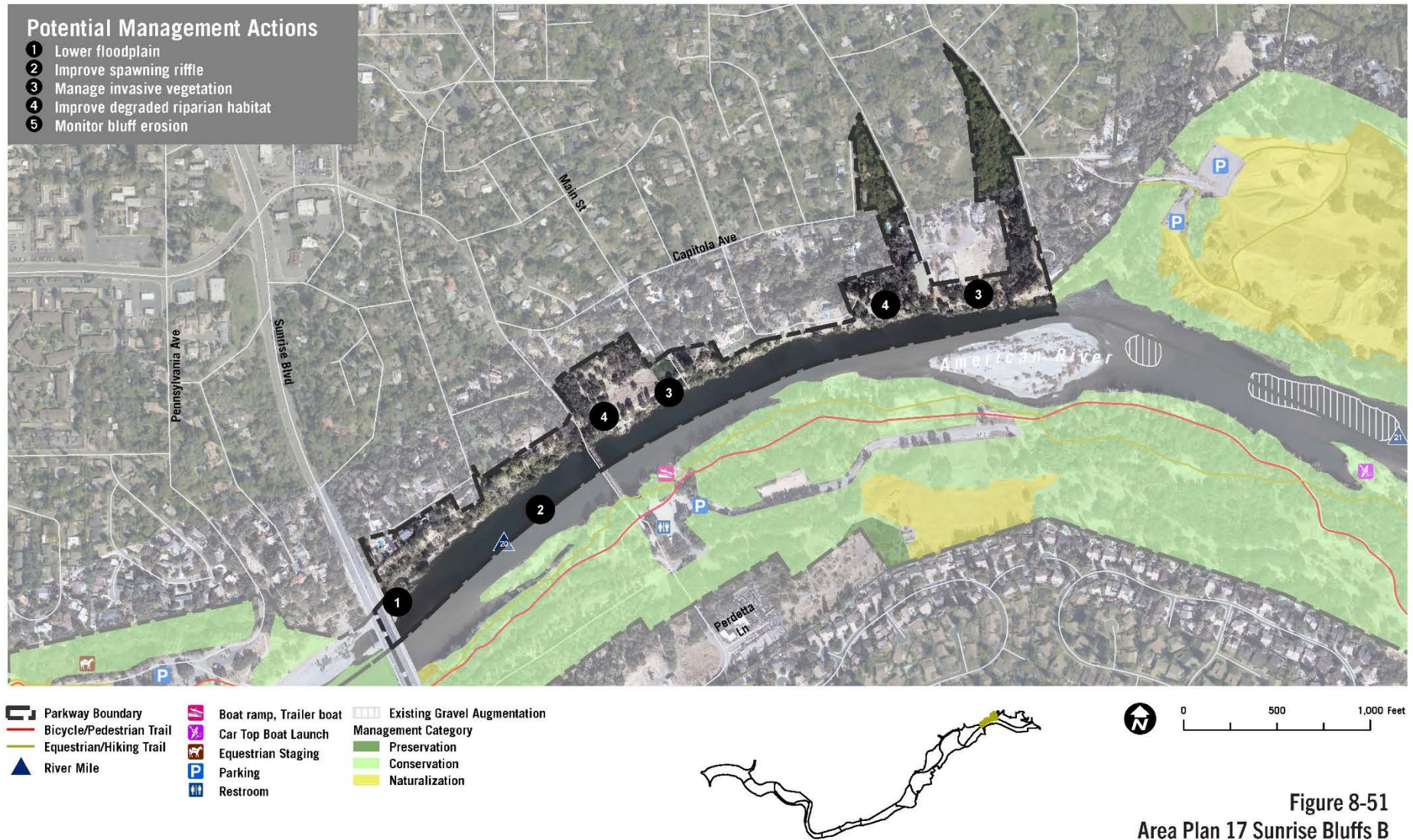


Plate PD-18: Potential Management Actions at Upper Sunrise

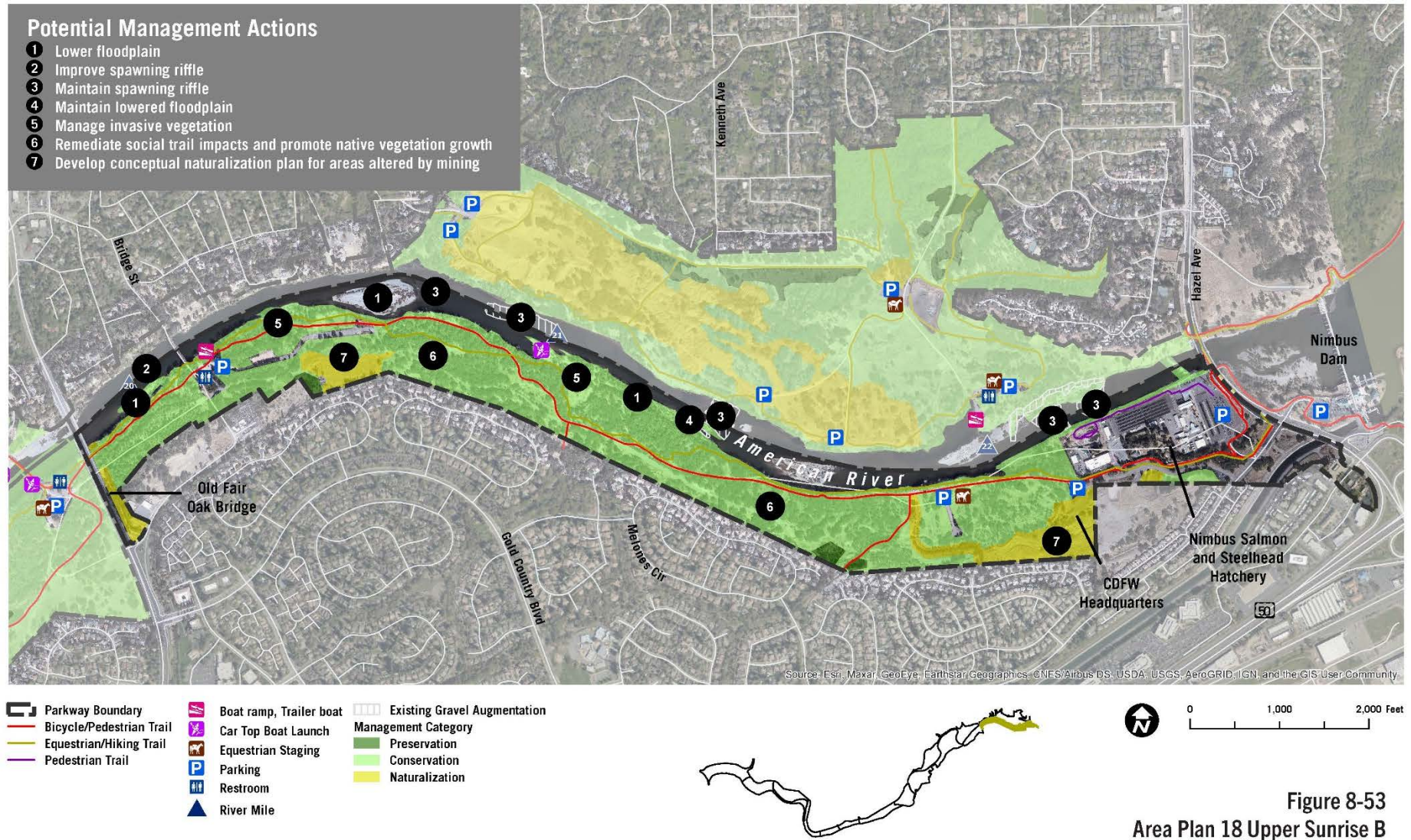


Plate PD-19: Potential Management Actions at Sailor Bar

