

**DEPARTMENT OF TRANSPORTATION**

DISTRICT 7  
100 S. MAIN STREET, SUITE 100  
LOS ANGELES, CA 90012  
PHONE (213) 897-0362  
FAX (213) 897-0360  
TTY 711  
www.dot.ca.gov



*Making Conservation  
a California Way of Life.*

December 11, 2020

Agencies, Organizations, and Individuals  
interested in the Eastbound SR-91/Atlantic  
Avenue to Cherry Avenue Auxiliary Lane  
Improvements Project

File: 07-LA-91 (PM R11.8/R13.2)  
Eastbound State Route 91/Atlantic  
Avenue to Cherry Avenue Auxiliary  
Lane Improvements Project

**Notice of Availability of the Draft Initial Study/Environmental Assessment, Notice of Intent  
to Adopt a Mitigated Negative Declaration, and Notice of Opportunity for a Public Hearing  
for the Eastbound State Route 91/Atlantic Avenue to Cherry Avenue Auxiliary Lane  
Improvements Project**

The California Department of Transportation (Caltrans) District 7, in cooperation with the Los Angeles County Metropolitan Transportation Authority (Metro) and the Gateway Cities Council of Governments, proposes to develop and implement an auxiliary lane on Eastbound State Route 91 (SR-91) within a 1.4-mile segment from the southbound Interstate 710 (I-710) interchange connector to eastbound SR-91, to Cherry Avenue (Project). The Project Study Area includes Eastbound SR-91 (Post Miles [PM] R11.8/R13.2) and is located in the City of Long Beach California. Bridge modifications and restriping would be required as part of the Project. The purpose of the Project is to enhance safety conditions, reduce congestion, and improve freeway operations on both the Eastbound SR-91 mainline and ramps.

There are two alternatives under consideration, including a No Build Alternative and one Build Alternative. Caltrans is the lead agency under the California Environmental Quality Act and the National Environmental Policy Act.

Caltrans has studied the effects this project may have on the environment and has prepared a Draft Initial Study/Environmental Assessment (IS/EA) and proposes to adopt a mitigated negative declaration (MND). The Draft IS/EA and proposed MND are available online and will be available for review for 45 days between December 17, 2020 and February 1, 2021 at <https://www.metro.net/projects/i-605-corridor-hot-spots-program/SR-91-early-action-projects/>. Technical studies in support of the Draft IS/EA and printed copies of the aforementioned documents are available upon request.

As analyzed in the IS/EA, the Project would have no effect on aesthetics, agriculture and forest resources, cultural resources, energy, land use and planning, mineral resources, population and housing, recreation, tribal cultural resources, and wildfire. In addition, the proposed Project would

December 11, 2020

Page 2

have less than significant effects to air quality, biological resources, greenhouse gas emissions, hazards and hazardous materials, hydrology and water quality, public services, transportation, and utilities and service systems. With incorporation of the mitigation measures, the proposed Project would have less than significant effects to noise, and geology and soils.

Project-level conformity analysis shows that the Project will conform to the State Implementation Plan, including localized impact analysis with interagency consultation for particulate matter (PM<sub>10</sub> and PM<sub>2.5</sub>) and carbon monoxide (CO) required by 40 CFR 93.116 and 93.123. The Project is not considered a Project of Concern regarding particulate matter (PM<sub>10</sub> and PM<sub>2.5</sub>) as defined in 40 CFR 93.123(b)(1). As detailed in the Draft IS/EA, PM<sub>10</sub> and PM<sub>2.5</sub> hot-spot analysis was not completed because Clean Air Act and 40 CFR 93.116 requirements are met without an explicit hot-spot analysis. The Project comes from a conforming Regional Transportation Plan and Transportation Improvement Program. Comment is requested regarding the project-level conformity analysis.

The Draft IS/EA and proposed MND will be under public review for 45 days. Please submit any written comments on the Draft IS/EA and proposed MND no later than **February 1, 2021** or request for a public hearing no later than **January 18, 2021** to:

[D07.91AtlanticToCherry@dot.ca.gov](mailto:D07.91AtlanticToCherry@dot.ca.gov)

or

Mr. Ronald Kosinski, Deputy District Director  
California Department of Transportation  
Division of Environmental Planning  
100 South Main Street MS-16A  
Los Angeles, CA 90012  
Attn: SR-91/Atlantic to Cherry Project

If you have any questions, please contact Thoa Le, Senior Environmental Planner, at [D07.91AtlanticToCherry@dot.ca.gov](mailto:D07.91AtlanticToCherry@dot.ca.gov) or (213) 269-0238. Thank you for your interest in this important transportation project.

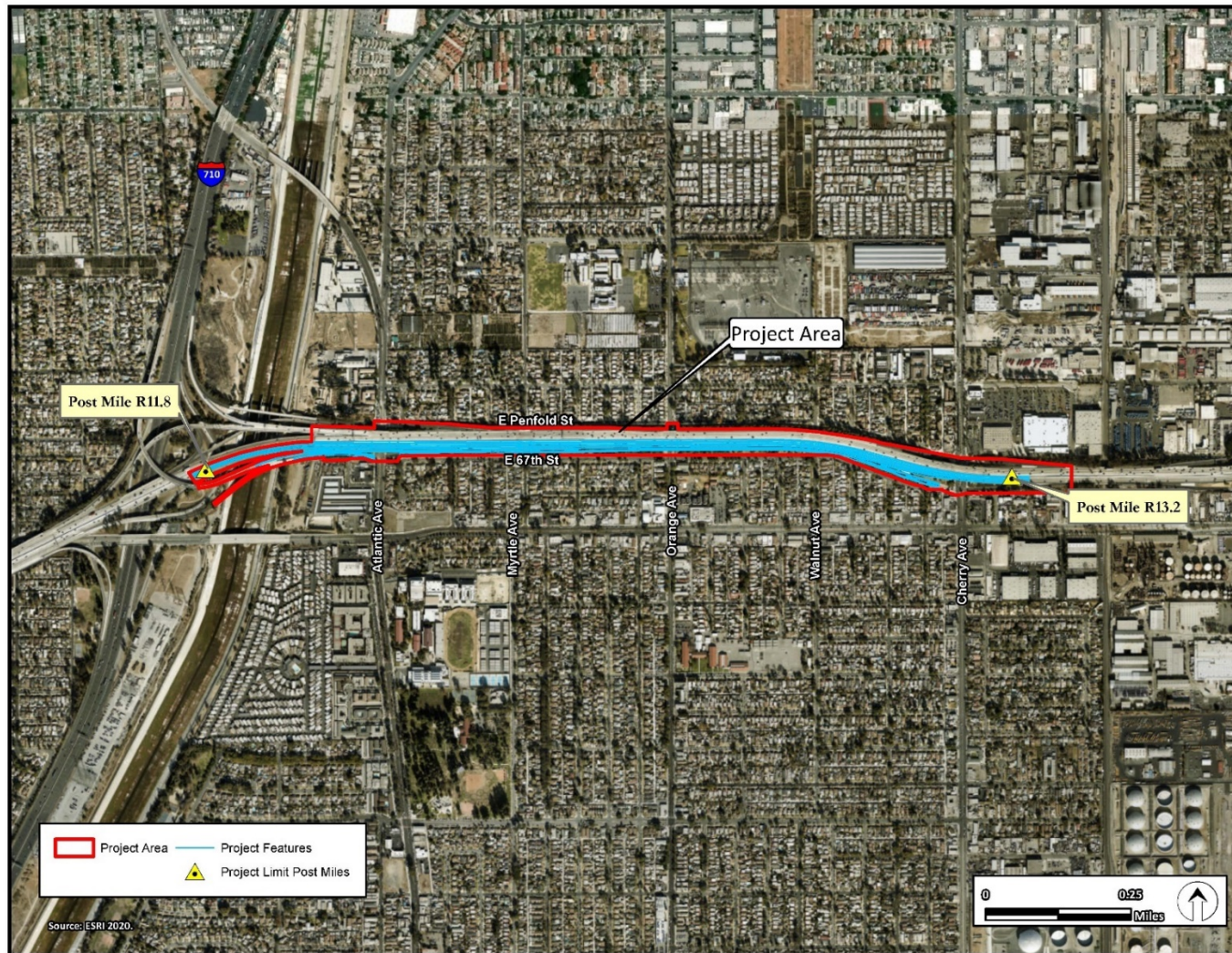
Sincerely,



**RONALD KOSINSKI**

Deputy District Director, Division of Environmental Planning





*Eastbound State Route 91/Atlantic Avenue to Cherry Avenue Auxiliary Lane Improvements Project  
Project Study Area*

*"Provide a safe, sustainable, integrated and efficient transportation system  
to enhance California's economy and livability"*