

A PHASE I CULTURAL RESOURCES SURVEY FOR THE FIRST INDUSTRIAL WILSON AVENUE PROJECT

PERRIS, CALIFORNIA

APN 300-170-009

Submitted to:

City of Perris
Planning and Development
135 North D Street
Perris, California 92570

Prepared for:

First Industrial Realty Trust, Inc.
c/o Advantage Environmental Consultants, LLC
145 Vallecitos De Oro, Suite 201
San Marcos, California 92069

Prepared by:

Andrew J. Garrison and Brian F. Smith
Brian F. Smith and Associates, Inc.
14010 Poway Road, Suite A
Poway, California 92064



March 20, 2019; Revised May 19, 2020

Archaeological Database Information

Authors: Andrew J. Garrison and Brian F. Smith

Consulting Firm: Brian F. Smith and Associates, Inc.
14010 Poway Road, Suite A
Poway, California 92064
(858) 484-0915

Report Date: March 20, 2019; Revised May 19, 2020

Report Title: A Phase I Cultural Resources Survey for the First Industrial
Wilson Avenue Project, Perris, California

Prepared for: First Industrial Realty Trust, Inc.
c/o Advantage Environmental Consultants, LLC
145 Vallecitos De Oro, Suite 201
San Marcos, California 92069

Submitted to: City of Perris
Planning and Development
135 North D Street
Perris, California 92570

Submitted by: Brian F. Smith and Associates, Inc.
14010 Poway Road, Suite A
Poway, California 92064

Assessor's Parcel Number(s): 300-170-009

USGS Quadrangle: *Perris, California* (7.5 minute)

Study Area: Approximately 15-acre industrial site east of Wilson Avenue and
south of Rider Street

Key Words: USGS *Perris* Quadrangle (7.5-minute); archaeological survey;
positive; historic concrete pad (Site Temp-1); not significant.

I. INTRODUCTION

In response to a requirement by the City of Perris for the environmental assessment of a proposed industrial building site, Brian F. Smith and Associates, Inc. (BFSA) conducted an archaeological survey of the First Industrial Wilson Avenue Project. The approximately 15-acre proposed warehouse site is located south of Rider Street, directly east of Wilson Avenue, and west of the Perris Valley Storm Drain (PVSD), in the city of Perris, Riverside County, California (Figure 1). The subject property is situated southeast of March Air Reserve Base and southwest of Lake Perris, within Assessor's Parcel Number (APN) 300-170-009. The property is located within Section 17, Township 4 South, Range 3 West of the USGS *Perris, California 7.5'* topographic quadrangle (Figure 2). The project will include the construction of a warehouse with office space, tractor-trailer loading docks, parking, and associated infrastructure and landscaping (Figure 3).

The archaeological survey, which was conducted on January 15, 2019, was completed to determine if cultural resources exist within the property. The survey of the property did not result in the identification of any cultural resources. As a part of this study, a copy of this report will be submitted to the Eastern Information Center (EIC) at the University of California at Riverside (UCR). All investigations conducted by BFSA related to this project conformed to the California Environmental Quality Act (CEQA) and City of Perris environmental guidelines, including the Perris Valley Commerce Center (PVCC) Specific Plan Final Environmental Impact Report (FEIR).

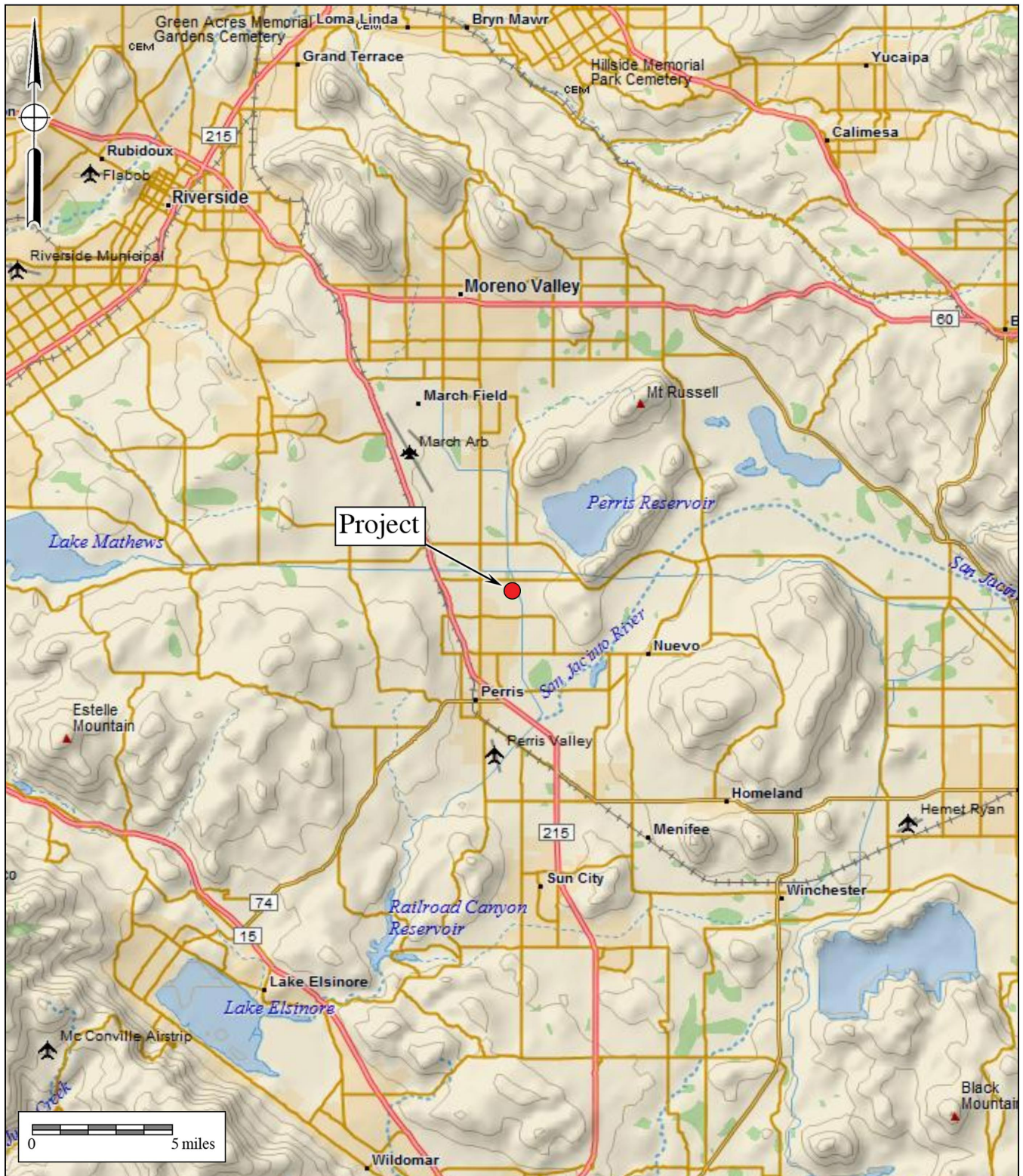


Figure 1
General Location Map
 The First Industrial Wilson Avenue Project

DeLorme (1:250,000)



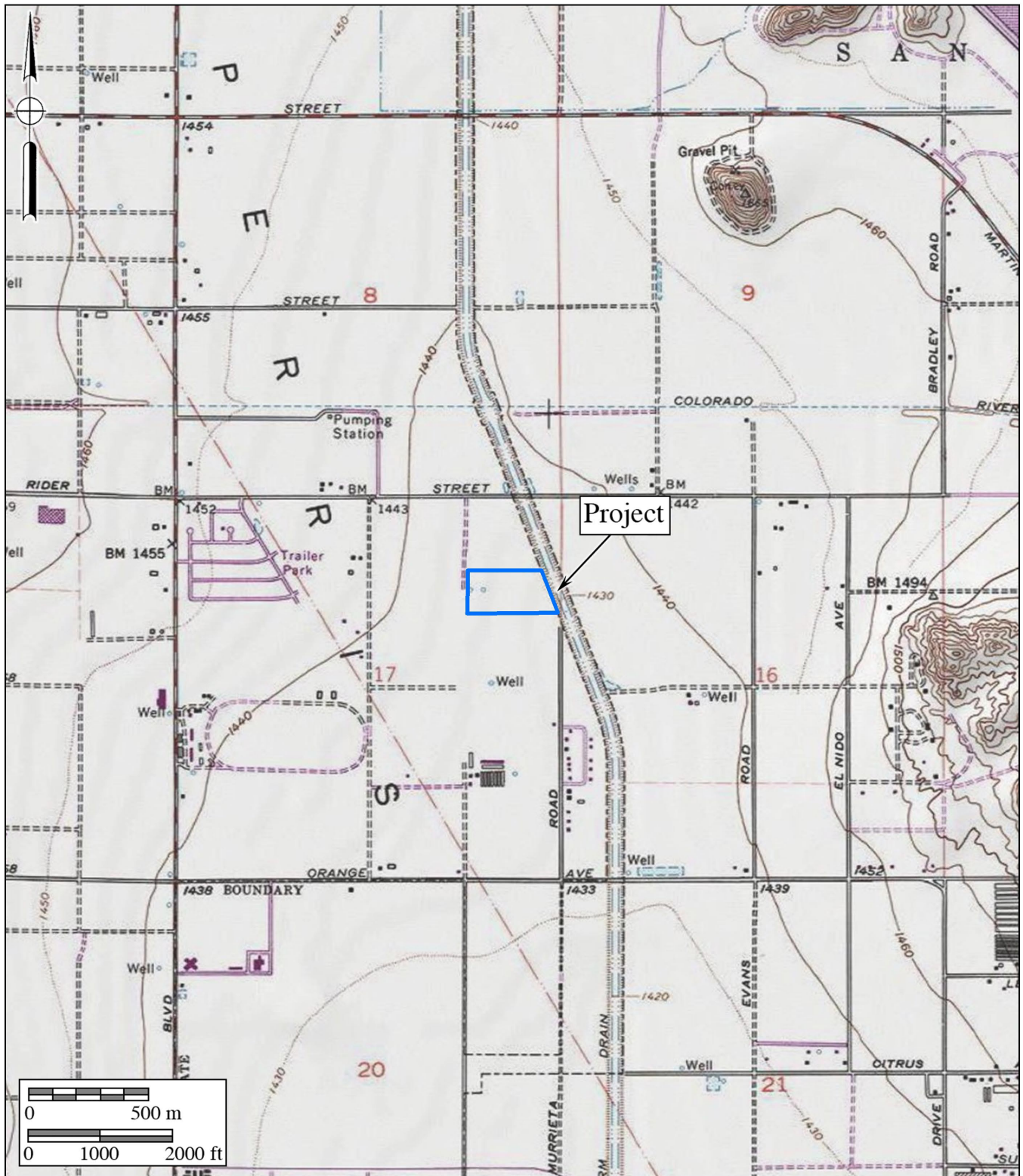


Figure 2

Project Location Map

The First Industrial Wilson Avenue Project

USGS *Perris* Quadrangle (7.5-minute series)



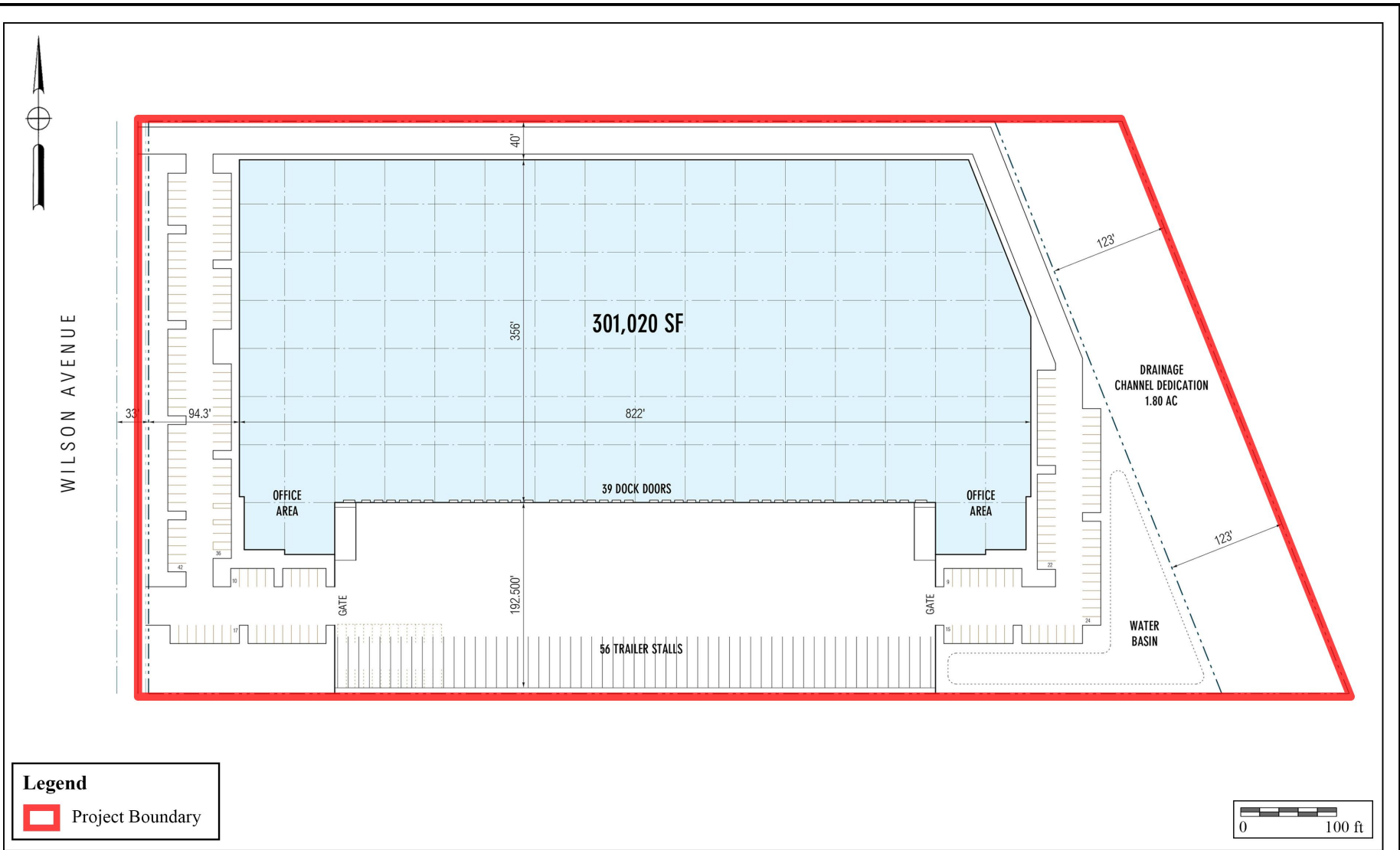


Figure 3
Project Development Map
The First Industrial Wilson Avenue Project



II. SETTING

Natural Environment

Riverside County, including the city of Perris, lies in the Peninsular Ranges Geologic Province of southern California. This range, which lies in a northwest-to-southeast trend through the county, extends around 1,000 miles from the Raymond-Malibu Fault Zone in western Los Angeles County to the southern tip of Baja California. The subject property is situated within the Perris Valley and is generally flat, with elevations within the project averaging approximately 1,440 feet above mean sea level (AMSL).

Geologically, the project is mapped as located on Holocene (“modern”) and upper Pleistocene (10,000 to perhaps 100,000 year old) young alluvial valley deposits, which may overlies older, lower Pleistocene (approximately 1.8 million to perhaps 200,000 to 300,000 year old) very old alluvial fan deposits (Qvof_a) (Wirths 2018). The specific soils in the project are mainly comprised of Domino silt loam (Du) and Domino silt loam, saline-alkali (Dv) (Ramirez 2016).

The Perris Valley originally contained perennial grasses which have primarily been replaced by non-native weeds and grasses. Although not found within the subject property, the Riversidian sage scrub plant community is the most prevalent native vegetation found in the region. The Riversidian sage scrub is primarily found within adjacent Lakeview Mountains and Bernasconi Hills and includes desert encelia, brittle brush, sagebrush, black sage, white sage, buckwheat, foxtails, and cacti. Mammals within the region include mule deer (*Odocoileus hemionus*), coyote (*Canis latrans*), bobcat (*Lynx rufus*), mountain lion (*Puma concolor*), ground squirrel (*Otospermophilus beecheyi*), and quail (*Dipodomys*); birds include hawks and eagles (Falconidae), owls (Tytonidae), mourning dove (*Zenaida macroura*), mockingbird (*Mimus polyglottos*), jay (*Garrulus glandarius*), heron (*Ardeidae*), crow (*Corvus*), finch (*Fringillidae*), and sparrow (*Passer domesticus*).

Although the project is adjacent to the man-made PVSD, the project does not contain any natural hydrologic features. The closest major natural source of water is the San Jacinto River located approximately three miles to the southeast. In addition, there are smaller seasonal drainages which transport water for the higher elevated foothills surrounding the Perris Reservoir approximately two miles northwest of the project.

Currently, the property is characterized as disked and disturbed vacant land that was historically utilized for agriculture. During the prehistoric period, vegetation near the project provided sufficient food resources to support prehistoric human occupants. Animals that inhabited the project during prehistoric times included mammals such as rabbits, squirrels, gophers, mice, rats, deer, and coyotes, in addition to a variety of reptiles and amphibians. The natural setting of the project during the prehistoric occupation offered a rich nutritional resource base. Fresh water was likely obtainable from seasonal drainages and the San Jacinto River located southeast of the project. Historically, the property contained crops for dry farming, as well as the same plant and animal species that are present today.

Cultural Setting

Paleo Indian, Archaic Period Milling Stone Horizon, and the Late Prehistoric Takic groups are the three general cultural periods represented in Riverside County. The following discussion of the cultural history of Riverside County references the San Dieguito Complex, Encinitas Tradition, Milling Stone Horizon, La Jolla Complex, Pauma Complex, and San Luis Rey Complex, since these culture sequences have been used to describe archaeological manifestations in the region. The Late Prehistoric component present in the Riverside County area was represented by the Cahuilla, Gabrielino, and Luiseño Indians.

Absolute chronological information, where possible, will be incorporated into this discussion to examine the effectiveness of continuing to interchangeably use these terms. Reference will be made to the geological framework that divides the culture chronology of the area into four segments: the late Pleistocene (20,000 to 10,000 YBP [years before the present]), the early Holocene (10,000 to 6,650 YBP), the middle Holocene (6,650 to 3,350 YBP), and the late Holocene (3,350 to 200 YBP).

Paleo Indian Period (Late Pleistocene: 11,500 to circa 9,000 YBP)

The Paleo Indian Period is associated with the terminus of the late Pleistocene (12,000 to 10,000 YBP). The environment during the late Pleistocene was cool and moist, which allowed for glaciation in the mountains and the formation of deep, pluvial lakes in the deserts and basin lands (Moratto 1984). However, by the terminus of the late Pleistocene, the climate became warmer, which caused the glaciers to melt, sea levels to rise, greater coastal erosion, large lakes to recede and evaporate, extinction of Pleistocene megafauna, and major vegetation changes (Moratto 1984; Martin 1967, 1973; Fagan 1991). The coastal shoreline at 10,000 YBP, depending upon the particular area of the coast, was near the 30-meter isobath, or two to six kilometers further west than its present location (Masters 1983).

Paleo Indians were likely attracted to multiple habitat types, including mountains, marshlands, estuaries, and lakeshores. These people likely subsisted using a more generalized hunting, gathering, and collecting adaptation utilizing a variety of resources including birds, mollusks, and both large and small mammals (Erlandson and Colten 1991; Moratto 1984; Moss and Erlandson 1995).

Archaic Period (Early and Middle Holocene: circa 9,000 to 1,300 YBP)

Between 9,000 and 8,000 YBP, a widespread complex was established in the southern California region, primarily along the coast (Warren and True 1961). This complex is locally known as the La Jolla Complex (Rogers 1939; Moriarty 1966), which is regionally associated with the Encinitas Tradition (Warren 1968) and shares cultural components with the widespread Milling Stone Horizon (Wallace 1955). The coastal expression of this complex appeared in the southern California coastal areas and focused upon coastal resources and the development of deeply stratified shell middens that were primarily located around bays and lagoons. The older sites

associated with this expression are located at Topanga Canyon, Newport Bay, Agua Hedionda Lagoon, and some of the Channel Islands. Radiocarbon dates from sites attributed to this complex span a period of over 7,000 years in this region, beginning over 9,000 YBP.

The Encinitas Tradition is best recognized for its pattern of large coastal sites characterized by shell middens, grinding tools that are closely associated with the marine resources of the area, cobble-based tools, and flexed human burials (Shumway et al. 1961; Smith and Moriarty 1985). While ground stone tools and scrapers are the most recognized tool types, coastal Encinitas Tradition sites also contain numerous utilized flakes, which may have been used to pry open shellfish. Artifact assemblages at coastal sites indicate a subsistence pattern focused upon shellfish collection and nearshore fishing. This suggests an incipient maritime adaptation with regional similarities to more northern sites of the same period (Koerper et al. 1986). Other artifacts associated with Encinitas Tradition sites include stone bowls, doughnut stones, discoidals, stone balls, and stone, bone, and shell beads.

The coastal lagoons in southern California supported large Milling Stone Horizon populations circa 6,000 YBP, as is shown by numerous radiocarbon dates from the many sites adjacent to the lagoons. The ensuing millennia were not stable environmentally, and by 3,000 YBP, many of the coastal sites in central San Diego County had been abandoned (Gallegos 1987, 1992). The abandonment of the area is usually attributed to the sedimentation of coastal lagoons and the resulting deterioration of fish and mollusk habitat, which is a well-documented situation at Batiquitos Lagoon (Miller 1966; Gallegos 1987). Over a two-thousand-year period at Batiquitos Lagoon, dominant mollusk species occurring in archaeological middens shift from deep-water mollusks (*Argopecten* sp.) to species tolerant of tidal flat conditions (*Chione* sp.), indicating water depth and temperature changes (Miller 1966; Gallegos 1987).

This situation likely occurred for other small drainages (Buena Vista, Agua Hedionda, San Marcos, and Escondido creeks) along the central San Diego coast where low flow rates did not produce sufficient discharge to flush the lagoons they fed (Buena Vista, Agua Hedionda, Batiquitos, and San Elijo lagoons) (Byrd 1998). Drainages along the northern and southern San Diego coastline were larger and flushed the coastal hydrological features they fed, keeping them open to the ocean and allowing for continued human exploitation (Byrd 1998). Peñasquitos Lagoon exhibits dates as late as 2,355 YBP (Smith and Moriarty 1985) and San Diego Bay showed continuous occupation until the close of the Milling Stone Horizon (Gallegos and Kyle 1988). Additionally, data from several drainages in Camp Pendleton indicate a continued occupation of shell midden sites until the close of the period, indicating that coastal sites were not entirely abandoned during this time (Byrd 1998).

By 5,000 YBP, an inland expression of the La Jolla Complex is evident in the archaeological record, exhibiting influences from the Campbell Tradition from the north. These inland Milling Stone Horizon sites have been termed “Pauma Complex” (True 1958; Warren et al. 1961; Meighan 1954). By definition, Pauma Complex sites share a predominance of grinding implements (manos and metates), lack mollusk remains, have greater tool variety (including atlatl

dart points, quarry-based tools, and crescentics), and seem to express a more sedentary lifestyle with a subsistence economy based upon the use of a broad variety of terrestrial resources. Although originally viewed as a separate culture from the coastal La Jolla Complex (True 1980), it appears that these inland sites may be part of a subsistence and settlement system utilized by the coastal peoples. Evidence from the 4S Project in inland San Diego County suggests that these inland sites may represent seasonal components within an annual subsistence round by La Jolla Complex populations (Raven-Jennings et al. 1996). Including both coastal and inland sites of this time period in discussions of the Encinitas Tradition, therefore, provides a more complete appraisal of the settlement and subsistence system exhibited by this cultural complex.

More recent work by Sutton has identified a more localized complex known as the Greven Knoll Complex. The Greven Knoll Complex is a redefined northern inland expression of the Encinitas Tradition first put forth by Mark Sutton and Jill Gardener (2010). Sutton and Gardener (2010:25) state that “[t]he early millingstone archaeological record in the northern portion of the interior southern California was not formally named but was often referred to as ‘Inland Millingstone,’ ‘Encinitas,’ or even ‘Topanga.’” Therefore, they proposed that all expressions of the inland Milling Stone in southern California north of San Diego County be grouped together in the Greven Knoll Complex.

The Greven Knoll Complex, as postulated by Sutton and Gardener (2010), is broken into three phases and obtained its name from the type-site Greven Knoll located in Yucaipa, California. Presently, the Greven Knoll Site is part of the Yucaipa’t Site (SBR-1000) and was combined with the adjacent Simpson Site. Excavations at Greven Knoll recovered manos, metates, projectile points, discoidal cogged stones, and a flexed inhumation with a possible cremation (Kowta 1969:39). It is believed that the Greven Knoll Site was occupied between 5,000 and 3,500 YBP. The Simpson Site contained mortars, pestles, side-notched points, and stone and shell beads. Based upon the data recovered at these sites, Kowta (1969:39) suggested that “coastal Milling Stone Complexes extended to and interdigitated with the desert Pinto Basin Complex in the vicinity of the Cajon Pass.”

Phase I of the Greven Knoll Complex is generally dominated by the presence of manos and metates, core tools, hammerstones, large dart points, flexed inhumations, and occasional cremations. Mortars and pestles are absent from this early phase, and the subsistence economy emphasized hunting. Sutton and Gardener (2010:26) propose that the similarity of the material culture of Greven Knoll Phase I and that found in the Mojave Desert at Pinto Period sites indicates that the Greven Knoll Complex was influenced by neighbors to the north at that time. Accordingly, Sutton and Gardener (2010) believe that Greven Knoll Phase I may have appeared as early as 9,400 YBP and lasted until about 4,000 YBP.

Greven Knoll Phase II is associated with a period between 4,000 and 3,000 YBP. Artifacts common to Greven Knoll Phase II include manos and metates, Elko points, core tools, and discoidals. Pestles and mortars are present; however, they are only represented in small numbers. Finally, there is an emphasis upon hunting and gathering for subsistence (Sutton and Gardener

2010:8).

Greven Knoll Phase III includes manos, metates, Elko points, scraper planes, choppers, hammerstones, and discoids. Again, small numbers of mortars and pestles are present. Greven Knoll Phase III spans from approximately 3,000 to 1,000 YBP and shows a reliance upon seeds and yucca. Hunting is still important, but bones seem to have been processed to obtain bone grease more often in this later phase (Sutton and Gardener 2010:8).

The shifts in food processing technologies during each of these phases indicate a change in subsistence strategies; although people were still hunting for large game, plant-based foods eventually became the primary dietary resource (Sutton 2011a). Sutton's (2011b) argument posits that the development of mortars and pestles during the middle Holocene can be attributed to the year-round exploitation of acorns as a main dietary provision. Additionally, the warmer and drier climate may have been responsible for groups from the east moving toward coastal populations, which is archaeologically represented by the interchange of coastal and eastern cultural traits (Sutton 2011a).

Late Prehistoric Period (Late Holocene: 1,300 YBP to 1790)

Many Luiseño hold the world view that as a population they were created in southern California; however, archaeological and anthropological data proposes a scientific perspective. Archaeological and anthropological evidence suggests that at approximately 1,350 YBP, Takic-speaking groups from the Great Basin region moved into Riverside County, marking the transition to the Late Prehistoric Period. An analysis of the Takic expansion by Sutton (2009) indicates that inland southern California was occupied by "proto-Yuman" populations before 1,000 YBP. The comprehensive, multi-phase model offered by Sutton (2009) employs linguistic, ethnographic, archaeological, and biological data to solidify a reasonable argument for population replacement of Takic groups to the north by Penutians (Laylander 1985). As a result, it is believed that Takic expansion occurred starting around 3,500 YBP moving toward southern California, with the Gabrielino language diffusing south into neighboring Yuman (Hokan) groups around 1,500 to 1,000 YBP, possibly resulting in the Luiseño dialect.

Based upon Sutton's model, the final Takic expansion would not have occurred until about 1,000 YBP, resulting in Vanyume, Serrano, Cahuilla, and Cupeño dialects. The model suggests that the Luiseño did not simply replace Hokan speakers, but were rather a northern San Diego County/southern Riverside County Yuman population who adopted the Takic language. This period is characterized by higher population densities and elaborations in social, political, and technological systems. Economic systems diversified and intensified during this period with the continued elaboration of trade networks, the use of shell-bead currency, and the appearance of more labor-intensive, yet effective, technological innovations. Technological developments during this period included the introduction of the bow and arrow between A.D. 400 and 600 and the introduction of ceramics. Atlatl darts were replaced by smaller arrow darts, including Cottonwood series points. Other hallmarks of the Late Prehistoric Period include extensive trade

networks as far-reaching as the Colorado River Basin and cremation of the dead.

Protohistoric Period (Late Holocene: 1790 to Present)

Ethnohistoric and ethnographic evidence indicates that three Takic-speaking groups occupied portions of Riverside County: the Cahuilla, the Gabrielino, and the Luiseño. The geographic boundaries between these groups in pre- and proto-historic times are difficult to place, but the project is located well within the borders of ethnographic Luiseño territory. This group was a seasonal hunting and gathering people with cultural elements that were very distinct from Archaic Period peoples. These distinctions include cremation of the dead, the use of the bow and arrow, and exploitation of the acorn as a main food staple (Moratto 1984). Along the coast, the Luiseño made use of available marine resources by fishing and collecting mollusks for food. Seasonally available terrestrial resources, including acorns and game, were also sources of nourishment for Luiseño groups. Elaborate kinship and clan systems between the Luiseño and other groups facilitated a wide-reaching trade network that included trade of Obsidian Butte obsidian and other resources from the eastern deserts, as well as steatite from the Channel Islands.

According to Charles Handley (1967), the primary settlements of Late Prehistoric Luiseño Indians in the San Jacinto Plain were represented by Ivah and Soboba near Soboba Springs, Jusipah near the town of San Jacinto, Ararah in Webster's Canyon en route to Idyllwild, Pahsitha near Big Springs Ranch southeast of Hemet, and Corova in Castillo Canyon. These locations share features such as the availability of food and water resources. Features of this land use include petroglyphs and pictographs, as well as widespread milling, which is evident in bedrock and portable implements. Groups in the vicinity of the project, neighboring the Luiseño, include the Cahuilla and the Gabrielino. Ethnographic data for the three groups is presented below.

Luiseño

When contacted by the Spanish in the sixteenth century, the Luiseño occupied a territory bounded on the west by the Pacific Ocean, on the east by the Peninsular Ranges mountains at San Jacinto (including Palomar Mountain to the south and Santiago Peak to the north), on the south by Agua Hedionda Lagoon, and on the north by Aliso Creek in present-day San Juan Capistrano. The Luiseño were a Takic-speaking people more closely related linguistically and ethnographically to the Cahuilla, Gabrielino, and Cupeño to the north and east rather than the Kumeyaay who occupied territory to the south. The Luiseño differed from their neighboring Takic speakers in having an extensive proliferation of social statuses, a system of ruling families that provided ethnic cohesion within the territory, a distinct worldview that stemmed from the use of *datura* (a hallucinogen), and an elaborate religion that included the creation of sacred sand paintings depicting the deity *Chingichngish* (Bean and Shipek 1978; Kroeber 1976).

Subsistence and Settlement

The Luiseño occupied sedentary villages most often located in sheltered areas in valley

bottoms, along streams, or along coastal strands near mountain ranges. Villages were located near water sources to facilitate acorn leaching and in areas that offered thermal and defensive protection. Villages were composed of areas that were publicly and privately (by family) owned. Publicly owned areas included trails, temporary campsites, hunting areas, and quarry sites. Inland groups had fishing and gathering sites along the coast that were used intensively from January to March when inland food resources were scarce. During October and November, most of the village would relocate to mountain oak groves to harvest acorns. The Luiseño remained at village sites for the remainder of the year, where food resources were within a day's travel (Bean and Shipek 1978; Kroeber 1976).

The most important food source for the Luiseño was the acorn, six different species of which were used (*Quercus californica*, *Quercus agrifolia*, *Quercus chrysolepis*, *Quercus dumosa*, *Quercus engelmannii*, and *Quercus wislizenii*). Seeds, particularly of grasses, composites, and mints, were also heavily exploited. Seed-bearing species were encouraged through controlled burns, which were conducted at least every third year. A variety of other stems, leaves, shoots, bulbs, roots, and fruits were also collected. Hunting augmented this vegetal diet. Animal species taken included deer, rabbit, hare, woodrat, ground squirrel, antelope, quail, duck, freshwater fish from mountain streams, marine mammals, and other sea creatures such as fish, crustaceans, and mollusks (particularly abalone, or *Haliotis* sp.). In addition, a variety of snakes, small birds, and rodents were eaten (Bean and Shipek 1978; Kroeber 1976).

Social Organization

Social groups within the Luiseño nation consisted of patrilinear families or clans, which were politically and economically autonomous. Several clans comprised a religious party, or *nota*, which was headed by a chief who organized ceremonies and controlled economics and warfare. The chief had assistants who specialized in particular aspects of ceremonial or environmental knowledge and who, with the chief, were part of a religion-based social group with special access to supernatural power, particularly that of *Chingichngish*. The positions of chief and assistants were hereditary, and the complexity and multiplicity of these specialists' roles likely increased in coastal and larger inland villages (Bean and Shipek 1978; Kroeber 1976; Strong 1929).

Marriages were arranged by the parents, often made to forge alliances between lineages. Useful alliances included those between groups of differing ecological niches and those that resulted in territorial expansion. Residence was patrilocal (Bean and Shipek 1978; Kroeber 1976). Women were primarily responsible for plant gathering, and men principally hunted, although at times, particularly during acorn and marine mollusk harvests, there was no division of labor. Elderly women cared for children and elderly men participated in rituals, ceremonies, and political affairs. They were also responsible for manufacturing hunting and ritual implements. Children were taught subsistence skills at the earliest age possible (Bean and Shipek 1978; Kroeber 1976).

Material Culture

House structures were conical, partially subterranean, and thatched with reeds, brush, or bark. Ramadas were rectangular, protected workplaces for domestic chores such as cooking. Ceremonial sweathouses were important in purification rituals; these were round and partially subterranean thatched structures covered with a layer of mud. Another ceremonial structure was the *wámkis* (located in the center of the village, serving as the place of rituals), where sand paintings and other rituals associated with the *Chingichngish* religious group were performed (Bean and Shipek 1978; Kroeber 1976).

Clothing was minimal; women wore a cedar-bark and netted twine double apron and men wore a waist cord. In cold weather, cloaks or robes of rabbit fur, deerskin, or sea otter fur were worn by both sexes. Footwear included deerskin moccasins and sandals fashioned from yucca fibers. Adornments included bead necklaces and pendants made of bone, clay, stone, shell, bear claw, mica, deer hooves, and abalone shell. Men wore ear and nose piercings made from cane or bone, which were sometimes decorated with beads. Other adornments were commonly decorated with semiprecious stones including quartz, topaz, garnet, opal, opalite, agate, and jasper (Bean and Shipek 1978; Kroeber 1976).

Hunting implements included the bow and arrow. Arrows were tipped with either a carved, fire-hardened wooden tip or a lithic point, usually fashioned from locally available metavolcanic material or quartz. Throwing sticks fashioned from wood were used in hunting small game, while deer head decoys were used during deer hunts. Coastal groups fashioned dugout canoes for nearshore fishing and harvested fish with seines, nets, traps, and hooks made of bone or abalone shell (Bean and Shipek 1978; Kroeber 1976).

The Luiseño had a well-developed basket industry. Baskets were used in resource gathering, food preparation, storage, and food serving. Ceramic containers were shaped by paddle and anvil and fired in shallow, open pits to be used for food storage, cooking, and serving. Other utensils included wood implements, steatite bowls, and ground stone manos, metates, mortars, and pestles (Bean and Shipek 1978; Kroeber 1976). Additional tools such as knives, scrapers, choppers, awls, and drills were also used. Shamanistic items include soapstone or clay smoking pipes and crystals made of quartz or tourmaline (Bean and Shipek 1978; Kroeber 1976).

Cahuilla

At the time of Spanish contact in the sixteenth century, the Cahuilla occupied territory that included the San Bernardino Mountains, Orocopia Mountain, and the Chocolate Mountains to the west, Salton Sea and Borrego Springs to the south, Palomar Mountain and Lake Mathews to the west, and the Santa Ana River to the north. The Cahuilla are a Takic-speaking people closely related to their Gabrielino and Luiseño neighbors, although relations with the Gabrielino were more intense than with the Luiseño. They differ from the Luiseño and Gabrielino in that their religion is more similar to the Mohave tribes of the eastern deserts than the *Chingichngish* religious group of the Luiseño and Gabrielino. The following is a summary of ethnographic data regarding

this group (Bean 1978; Kroeber 1976).

Subsistence and Settlement

Cahuilla villages were typically permanent and located on low terraces within canyons in proximity to water sources. These locations proved to be rich in food resources and also afforded protection from prevailing winds. Villages had areas that were publicly owned and areas that were privately owned by clans, families, or individuals. Each village was associated with a particular lineage and series of sacred sites that included unique petroglyphs and pictographs. Villages were occupied throughout the year; however, during a several-week period in the fall, most of the village members relocated to mountain oak groves to take part in acorn harvesting (Bean 1978; Kroeber 1976).

The Cahuilla's use of plant resources is well documented. Plant foods harvested by the Cahuilla included valley oak acorns and single-leaf pinyon pine nuts. Other important plant species included bean and screw mesquite, agave, Mohave yucca, cacti, palm, chia, quail brush, yellowray goldfield, goosefoot, manzanita, catsclaw, desert lily, mariposa lily, and a number of other species such as grass seed. A number of agricultural domesticates were acquired from the Colorado River tribes including corn, bean, squash, and melon grown in limited amounts. Animal species taken included deer, bighorn sheep, pronghorn antelope, rabbit, hare, rat, quail, dove, duck, roadrunner, and a variety of rodents, reptiles, fish, and insects (Bean 1978; Kroeber 1976).

Social Organization

The Cahuilla was not a political nation, but rather a cultural nationality with a common language. Two non-political, non-territorial patrimoieties were recognized, the Wildcats (túktem) and the Coyotes (?ístam). Lineage and kinship were memorized at a young age among the Cahuilla, providing a backdrop for political relationships. Clans were composed of three to 10 lineages; each lineage owned a village site and specific resource areas. Lineages within a clan cooperated in subsistence activities, defense, and rituals (Bean 1978; Kroeber 1976).

A system of ceremonial hierarchy operated within each lineage. The hierarchy included the lineage leader, who was responsible for leading subsistence activities, guarding the sacred bundle, and negotiating with other lineage leaders in matters concerning land use, boundary disputes, marriage arrangements, trade, warfare, and ceremonies. The ceremonial assistant to the lineage leader was responsible for organizing ceremonies. A ceremonial singer possessed and performed songs at rituals and trained assistant singers. The shaman cured illnesses through supernatural powers, controlled natural phenomena, and was the guardian of ceremonies, keeping evil spirits away. The diviner was responsible for finding lost objects, telling future events, and locating game and other food resources. Doctors were usually older women who cured various ailments and illnesses with their knowledge of medicinal herbs. Finally, certain Cahuilla specialized as traders, who ranged as far west as Santa Catalina and as far east as the Gila River (Bean 1978; Kroeber 1976).

Marriages were arranged by parents from opposite moieties. When a child was born, an alliance formed between the families, which included frequent reciprocal exchanges. The Cahuilla kinship system extended to relatives within five generations. Important economic decisions, primarily the distribution of goods, operated within this kinship system (Bean 1978; Kroeber 1976).

Material Culture

Cahuilla houses were dome-shaped or rectangular, thatched structures. The home of the lineage leader was the largest, located near the ceremonial house with the best access to water. Other structures within the village included the men's sweathouse and granaries (Bean 1978; Kroeber 1976).

Cahuilla clothing, like other groups in the area, was minimal. Men typically wore a loincloth and sandals; women wore skirts made from mesquite bark, animal skin, or tules. Babies wore mesquite bark diapers. Rabbit skin cloaks were worn in cold weather (Bean 1978; Kroeber 1976).

Hunting implements included the bow and arrow, throwing sticks, and clubs. Grinding tools used in food processing included manos, metates, and wooden mortars. The Cahuilla were known to use long, wood, grinding implements to process mesquite beans; the mortar was typically a hollowed wooden log buried in the ground. Other tools included steatite arrow shaft straighteners (Bean 1978; Kroeber 1976).

Baskets were made from rush, deer grass, and skunkbrush. Different species and leaves were chosen for different colors in the basket design. Coiled-ware baskets were either flat (for plates, trays, or winnowing), bowl-shaped (for food serving), deep, inverted, and cone-shaped (for transporting), or rounded and flat-bottomed for storing utensils and personal items (Bean 1978; Kroeber 1976).

Cahuilla pottery was made from a thin, red-colored ceramic ware that was often painted and incised. Four basic vessel types are known for the Cahuilla: small-mouthed jars, cooking pots, bowls, and dishes. Additionally, smoking pipes and flutes were fashioned from ceramic (Bean 1978; Kroeber 1976).

Gabrielino

The territory of the Gabrielino at the time of Spanish contact covers much of present-day Los Angeles and Orange counties. The southern extent of this culture area is bounded by Aliso Creek, the eastern extent is located east of present-day San Bernardino along the Santa Ana River, the northern extent includes the San Fernando Valley, and the western extent includes portions of the Santa Monica Mountains. The Gabrielino also occupied several Channel Islands including Santa Barbara Island, Santa Catalina Island, San Nicholas Island, and San Clemente Island. Because of their access to certain resources, including a steatite source from Santa Catalina Island, this group was among the wealthiest and most populous aboriginal groups in all of southern

California. Trade of materials and resources controlled by the Gabrielino extended as far north as the San Joaquin Valley, as far east as the Colorado River, and as far south as Baja California (Bean and Smith 1978; Kroeber 1976).

Subsistence and Settlement

The Gabrielino lived in permanent villages and smaller resource-gathering camps occupied at various times of the year depending upon the seasonality of the resource. Larger villages were comprised of several families or clans, while smaller, seasonal camps typically housed smaller family units. The coastal area between San Pedro and Topanga Canyon was the location of primary subsistence villages, while secondary sites were located near inland sage stands, oak groves, and pine forests. Permanent villages were located along rivers and streams and in sheltered areas along the coast. As previously mentioned, the Channel Islands were also the locations of relatively large settlements (Bean and Smith 1978; Kroeber 1976).

Resources procured along the coast and on the islands were primarily marine in nature and included tuna, swordfish, ray and shark, California sea lion, Stellar sea lion, harbor seal, northern elephant seal, sea otter, dolphin and porpoise, various waterfowl species, numerous fish species, purple sea urchin, and mollusks, such as rock scallop, California mussel, and limpet. Inland resources included oak acorn, pine nut, Mohave yucca, cacti, sage, grass nut, deer, rabbit, hare, rodent, quail, duck, and a variety of reptiles such as western pond turtle and numerous snake species (Bean and Smith 1978; Kroeber 1976).

Social Organization

The social structure of the Gabrielino is little known; however, there appears to have been at least three social classes: 1) an elite, which included the rich, chiefs, and their immediate family; 2) a middle class, which included people of relatively high economic status or long-established lineages; and 3) a class of people that included most other individuals in the society. Villages were politically autonomous units comprised of several lineages. During times of the year when certain seasonal resources were available, the village would divide into lineage groups and move out to exploit them, returning to the village between forays (Bean and Smith 1978; Kroeber 1976).

Each lineage had its own leader, with the village chief coming from the dominant lineage. Several villages might be allied under a paramount chief. Chiefly positions were of an ascribed status, most often passed to the eldest son. Chiefly duties included providing village cohesion, leading warfare and peace negotiations with other groups, collecting tribute from the village(s) under his jurisdiction, and arbitrating disputes within the village(s). The status of the chief was legitimized by his safekeeping of the sacred bundle, a representation of the link between the material and spiritual realms and the embodiment of power (Bean and Smith 1978; Kroeber 1976).

Shamans were leaders in the spirit realm. The duties of the shaman included conducting healing and curing ceremonies, guarding the sacred bundle, locating lost items, identifying and collecting poisons for arrows, and making rain (Bean and Smith 1978; Kroeber 1976).

Marriages were made between individuals of equal social status and, in the case of powerful lineages, marriages were arranged to establish political ties between the lineages (Bean and Smith 1978; Kroeber 1976).

Men conducted the majority of the heavy labor, hunting, fishing, and trading with other groups. Women's duties included gathering and preparing plant and animal resources, and making baskets, pots, and clothing (Bean and Smith 1978; Kroeber 1976).

Material Culture

Gabrielino houses were domed, circular structures made of thatched vegetation. Houses varied in size and could house from one to several families. Sweathouses (semicircular, earth-covered buildings) were public structures used in male social ceremonies. Other structures included menstrual huts and a ceremonial structure called a *yuvar*, an open-air structure built near the chief's house (Bean and Smith 1978; Kroeber 1976).

Clothing was minimal; men and children most often went naked, while women wore deerskin or bark aprons. In cold weather, deerskin, rabbit fur, or bird skin (with feathers intact) cloaks were worn. Island and coastal groups used sea otter fur for cloaks. In areas of rough terrain, yucca fiber sandals were worn. Women often used red ochre on their faces and skin for adornment or protection from the sun. Adornment items included feathers, fur, shells, and beads (Bean and Smith 1978; Kroeber 1976).

Hunting implements included wooden clubs, sinew-backed bows, slings, and throwing clubs. Maritime implements included rafts, harpoons, spears, hook and line, and nets. A variety of other tools included deer scapulae saws, bone and shell needles, bone awls, scrapers, bone or shell flakers, wedges, stone knives and drills, metates, mullers, manos, shell spoons, bark platters, and wooden paddles and bowls. Baskets were made from rush, deer grass, and skunkbush. Baskets were fashioned for hoppers, plates, trays, and winnowers for leaching, straining, and gathering. Baskets were also used for storing, preparing, and serving food, and for keeping personal and ceremonial items (Bean and Smith 1978; Kroeber 1976).

The Gabrielino had exclusive access to soapstone, or steatite, procured from Santa Catalina Island quarries. This highly prized material was used for making pipes, animal carvings, ritual objects, ornaments, and cooking utensils. The Gabrielino profited well from trading steatite since it was valued so much by groups throughout southern California (Bean and Smith 1978; Kroeber 1976).

Ethnohistoric Period (1769 to Present)

European exploration along the California coast began in 1542 with the landing of Juan Rodriguez Cabrillo and his men at San Diego Bay. Sixty years after the Cabrillo expeditions, an expedition under Sebastian Viscaíno made an extensive and thorough exploration of the Pacific coast. Although the voyage did not extend beyond the northern limits of the Cabrillo track, Viscaíno had the most lasting effect on the nomenclature of the coast. Many of the names he gave

to various locations have survived, whereas practically every one of the names given by Cabrillo has faded from use. For instance, Cabrillo gave the name “San Miguel” to the first port he stopped at in what is now the United States; 60 years later, Viscáíno changed it to “San Diego” (Rolle 1969). The early European voyages observed Native Americans living in villages along the coast but did not make any substantial, long-lasting impact. At the time of contact, the Luiseño population was estimated to have ranged from 4,000 to as many as 10,000 individuals (Bean and Shipek 1978; Kroeber 1976).

Historic Period

The historic background of the project area began with the Spanish colonization of Alta California. The first Spanish colonizing expedition reached southern California in 1769 with the intention of converting and civilizing the indigenous populations, as well as expanding the knowledge of and access to new resources in the region (Brigandi 1998). In the late eighteenth century, the San Gabriel (Los Angeles County), San Juan Capistrano (Orange County), and San Luis Rey (San Diego County) missions “began colonizing the land [southern California] and gradually ... [expanded their use of] the interior valley in what is now western Riverside County for raising grain and cattle” to support the missions (County of Riverside 2020). “The San Gabriel mission claimed lands in what is now Jurupa, Riverside, San Jacinto, and the San Gorgonio Pass, while the San Luis Rey mission claimed land in what is now Lake Elsinore, Temecula, and Murrieta” (Lech 2004). The indigenous groups who occupied these lands were recruited by missionaries, converted, and put to work in the missions (Pourade 1964). Throughout this period, the Native American populations were decimated by introduced diseases, a drastic shift in diet resulting in poor nutrition, and social conflicts due to the introduction of an entirely new social order (Cook 1976).

In the mid- to late 1770s, “Juan Bautista de Anza, an army captain charged with discovering an overland route from the Mexican state of Sonora to San Gabriel and Los Angeles, passed through much of [what is now] Riverside County” and described fertile valleys, lakes, and sub-desert areas” (Lech 2004). In 1797, Father Presidente Lausen, Father Norberto de Santiago, and Corporal Pedro Lisalde led an expedition from Mission San Juan Capistrano through southwestern Riverside County in search of a new mission site before constructing Mission San Luis Rey in northern San Diego County (Brigandi 1998). “While no missions were ever built in what would become Riverside County” (Lech 2004), many mission outposts, or *asistencias*, were established in the early years of the nineteenth century to extend the missions’ influence to the backcountry (Brigandi 1998). Two outposts located in Riverside County include San Jacinto and Temecula.

Mexico gained independence in 1822 and desecularized the missions in 1832, signifying the end of the Mission Period (Brigandi 1998; Lech 2004). By this time, the missions owned some of the best and most fertile land in southern California. In order for California to develop, the land would have to be made productive enough to turn a profit (Brigandi 1998). The new government began distributing the vast mission holdings to wealthy and politically connected Mexican

citizens. “The ‘grants’ were called ranchos, and many of the ranchos in Riverside County have lent their names to modern-day locales,” (Lech 2004). There were 14 ranchos within what would become Riverside County (Beck and Haas 1974). The first grant in present-day Riverside County, Rancho Jurupa, was given to Juan Bandini in 1838, while the current project is located within Rancho San Jacinto Nuevo y Portrero. These ranchos were all located in the valley environments typical of western Riverside County.

The treatment of Native Americans grew worse during the Rancho Period. Most of the Native Americans were forced off of their land or put to work on the now privately-owned ranchos, most often as slave labor. In light of the brutal ranchos, the degree to which Native Americans had become dependent upon the mission system is evident when, in 1838, a group of Native Americans from the San Luis Rey Mission petitioned government officials in San Diego to relieve suffering at the hands of the rancheros:

We have suffered incalculable losses, for some of which we are in part to be blamed for because many of us have abandoned the Mission ... We plead and beseech you ... to grant us a Rev. Father for this place. We have been accustomed to the Rev. Fathers and to their manner of managing the duties. We labored under their intelligent directions, and we were obedient to the Fathers according to the regulations, because we considered it as good for us. (Brigandi 1998:21)

Native American culture had been disrupted to the point where they could no longer rely upon prehistoric subsistence and social patterns. Not only does this illustrate how dependent the Native Americans had become upon the missionaries, but it also indicates a marked contrast in the way the Spanish treated the Native Americans compared to the Mexican and United States ranchers. Spanish colonialism (missions) is based upon utilizing human resources while integrating them into their society. The Mexican and American ranchers did not accept Native Americans into their social order and used them specifically for the extraction of labor, resources, and profit. Rather than being incorporated, they were either subjugated or exterminated (Cook 1976).

In 1846, war erupted between Mexico and the United States. “In 1848, with the signing of the Treaty of Guadalupe Hidalgo,” the region was annexed as “a territory of the United States, and in 1850 California became a state. This event generated a steady flow of settlers into the area, including gold miners, entrepreneurs, health-seekers, speculators, politicians, adventurers, seekers of religious freedom, and individuals who envisioned utopian colonies (County of Riverside 2020).

In early 1852, the Native Americans of southern Riverside County, including the Luiseño and the Cahuilla, thought they had signed a treaty resulting in their ownership of all lands from Temecula to Aguanga east to the desert, including the San Jacinto Valley and the San Gorgonio Pass. The Temecula Treaty also included food and clothing provisions for the Native Americans. However, Congress never ratified the treaties, and the promise of one large reservation was

rescinded (Brigandi 1998).

According to Lech (2004):

With the advent of the transcontinental railroad in 1869, land speculators, developers, and colonists began to swarm to Southern California. The first colony in what would become Riverside County was Riverside itself. Judge John Wesley North ... [an] abolitionist from Tennessee ... brought a group of associates and co-investors out to Southern California, and founded Riverside on part of the Jurupa Rancho. A few years after, the navel orange was planted and found to be such a success that [it quickly became the agricultural staple of the region]. (Lech 2004)

“However, by the late 1880’s and early 1890’s, there was growing discontent between Riverside and San Bernardino, its neighbor 10 miles to the north,” due to differences in opinion concerning religion, morality, the Civil War, politics, and fierce competition to attract settlers (Lech 2004). “After a series of instances in which charges were claimed about unfair use of tax monies to the benefit of the City of San Bernardino only, several people from Riverside decided to investigate the possibility of a new county” (Lech 2004). “In May 1893, voters living within an area carved from San Bernardino County [to the north] and San Diego County [to the south] approved the formation of Riverside County” (County of Riverside 2020). Early business opportunities “were linked to agriculture but commerce, construction, manufacturing, transportation and tourism” also provided a healthy local economy (County of Riverside 2020). “By the time of Riverside County’s formation, Riverside had grown to become the wealthiest city per capita in the country, due to the ... [successful cultivation] of the navel orange” (Lech 2004).

History of the Perris

The project is located within the former Rancho San Jacinto Nuevo y Portrero land grant. The rancho was granted to Miguel Pedorena by Mexican Governor Pío Pico in 1846 (Hoffman 1862). After Pedorena’s death in 1850, the grant passed to his heirs under the guardianship of T.W. Sutherland (Gunther 1984).

In 1881, the California Southern Railroad laid the tracks for the transcontinental route of the Santa Fe Railway through the plains, west of the project. At this time, the area where the railroad was placed was referred to as the San Jacinto Plains. Surveying and construction of the railroad route was led by Frederick Thomas Perris, for whom the city of Perris was named. The railroad was completed in 1882, which allowed hundreds of settlers to enter the area for homesteading, most of them settling in Pinacate to the south (City of Perris 2013).

While still part of San Diego County, Rancho San Jacinto Nuevo y Portrero was patented to T.W. Sutherland, guardian of Miguel Pedorena’s children, in 1883 (Robinson 1997). In 1885, the citizens of Pinacate gathered together to create a more conveniently located station along the

railroad route, and in 1886, after much hard work, the town site of Perris was established (City of Perris 2013). In 1911, Perris became an incorporated city, relying heavily upon dry grain farming and citrus groves (City of Perris 2013).

History of the Project

The subject property is located outside of the originally-delineated city of Perris. However, this area has traditionally been associated with the city and historically part of its sphere of influence. Starting in the late nineteenth century and extending through the twentieth century, this region was mainly an agricultural community. When first subdivided, the project was originally held by the Perris Irrigation District, also known as the Perris Land Company. Throughout the early twentieth century, the holdings of the Perris Land Company were subdivided, with the current project being located within Lot 1, Section 17, Township 4 South, Range 3 West of the Perris Valley Land and Water Company Tract, subdivided in 1909 (Riverside County Records MB7/38).

In addition to the Perris Valley Land and Water Company Tract, another influential subdivision in the region was the Riverside Tract. The name of the tract was dictated by the investors, almost all of which resided in the city of Riverside (Gunther 1984). The land was laid out in 80-acre blocks which were subdivided into ten acre lots. The farm lots were sold off to farmers and speculators alike. Investors were guaranteed the success of the Perris Irrigation District; however, by 1900, many of the properties had failed, as farmers could not obtain a steady access to water.

Although the Perris Irrigation District was not as successful as originally predicted, traditionally, the area did remain agricultural throughout the twentieth century. Due to the limited groundwater, dry grain farming was the main crop until the 1950s, when the Eastern Municipal Water District began constructing infrastructure to better distribute water to the region. With better access to water, alfalfa, the King potato (which would produce two crops a year), and sugar beets became the mainstay of farming the Perris Valley (City of Perris n.d.).

The general area also was influenced by the development of March Field during the twentieth century. March Field was originally established March 1, 1918 as the Alessandro Flying Training Field following the United States' entry into World War I (Gunther 1984). The name was officially changed to March Field on March 20, 1918 in honor of Peyton C. March, Jr., who had been killed in a training plane crash in Fort Worth, Texas earlier that year. The air field changed names many times throughout the 1940s. In 1941, the name was changed to March Army Air Field; in 1942, to March Army Air Base; in 1947, to March Army Air Force Base to reflect the establishment of the United States Air Force; and finally to March ARB in 1996 (March Field Air Museum 2020). Although the official name changed multiple times, residents have continued to refer to it as "March Field" (Gunther 1984).

The establishment of March Field was important to the region for many reasons associated with the role the local inhabitants and region would contribute to World War I and World War II.

However, farming continued to be important to the region. During the mid- to late twentieth century, the Riverside County Flood Control and the Metropolitan Water District (MWD) began to establish storm drains and new modern water conveyance systems. The establishment of these modern water conveyance systems allowed farmers to better manage water on their land (City of Perris n.d.; Environmental Science Associates 2016; MWD n.d.).

Although Perris generally remained agricultural throughout the twentieth century, in recent years, the city has seen a growth in residential and industrial development. Today, many of the large agricultural fields have been developed into large logistics centers and warehouses servicing the greater Southern California region.

History of Development of the Project

Based upon Riverside County records, the property was originally identified as Lot 1, Section 17, Township 4 South, Range 3. Aerial photographs show that the property was traditionally utilized for agriculture from as early as 1938 through the mid- to late twentieth century. The aerial photographs do not show any buildings ever being located within the property, although the 1953 and 1962 aerial photographs do show what appears to be an irrigation feature, possibly a well or a stand pipe, located along what is now Wilson Avenue, and generally situated in the center of the current parcel. This feature is also visible on the 1966 aerial photograph, but is difficult to see on the 1967 aerial photograph. Nevertheless, the 1969 USGS *Perris* topographic map shows two wells within this general location, one where the originally identified irrigation feature was, and one just to the east. Further, between 1980 and 1997, the location of the originally identified irrigation feature was graded for the development of Wilson Avenue, and all that is visible on the aerial photographs after 1997 is a concrete pad approximately 100 feet east of the road within the location of the wells shown on the 1969 USGS *Perris* topographic map.

The property has been subdivided two times since Lot 1 was created. In 1972, the property, along with adjacent parcels, was annexed by the City of Perris (Riverside County Transportation and Land Management Agency [TLMA] Hanging Files). Shortly after, in 1974, Lot 1 was subdivided into four parcels, with the subject property part of a 35.5-acre parcel that extended north to Rider Street. The property was further subdivided in 1989, creating the current parcel.

III. AREA OF POTENTIAL EFFECT (APE)

The First Industrial Wilson Avenue Project consists of approximately 15 acres to be developed as an industrial warehouse property. The project is located within the city of Perris (APN 300-170-009), located south of Rider Street directly east of Wilson Avenue and west of the Perris Valley Storm Drain in the city of Perris, Riverside County, California (see Figures 1 through 3). The subject property can be characterized as generally flat, mostly disturbed vacant land. The project will include the construction of a warehouse with office space, tractor-trailer loading docks, parking and associated infrastructure and landscaping (see Figure 3).

IV. SCOPE OF WORK

In order to assess the potential for cultural resources within the proposed project, the archaeological investigation consisted of the following tasks:

- 1) An archaeological records search was conducted by BFSa at the EIC at UCR to gather any information regarding recorded cultural resources within or adjacent to the project.
- 2) A review of the Sacred Lands File (SLF) search conducted by the Native American Heritage Commission (NAHC) for the property.
- 3) Additional archival research of the property, including historic maps, Bureau of Land Management General Land Office records, Riverside County Assessor's data, and Riverside County TLMA records.
- 4) The initial archaeological survey of the property was accomplished by conducting a systematic pedestrian survey that followed survey transects, which were spaced 10 meters apart and paralleled the existing street directions. All areas of disturbed ground and any rodent burrows were analyzed for evidence of buried archaeological deposits.
- 5) This archaeological technical report was prepared to present the results of the field survey, impact analysis, and presentation of any mitigation measures required for project approval.

Research Goals

The primary goal of the research design is to attempt to understand the way in which humans have used the land and resources within the project area over time, as well as to aid in the determination of resource significance. For the current project, the study area under investigation is in the west-central portion of Riverside County. The scope of work for the archaeological program conducted for the First Industrial Wilson Avenue Project included a survey of the approximately 15-acre project. Given the area involved and the narrow focus of the cultural resources study, the research design for this project was necessarily limited and general in nature. Since the main objective of the investigation was to identify the presence of and potential impacts to cultural resources, the goal here is not necessarily to answer wide-reaching theories regarding the development of early southern California, but to investigate the role and importance of the identified resources. Although survey-level investigations are limited in terms of the amount of information available, several specific research questions were developed that could be used to guide the initial investigations of any observed cultural resources. The following research questions take into account the size and location of the project.

Research Questions:

- Can located cultural resources be situated with a specific time period, population, or individual?

- Do the types of located cultural resources allow a site activity/function to be determined from a preliminary investigation? What are the site activities? What is the site function? What resources were exploited?
- How do the located sites compare to others reported from different surveys conducted in the area?
- How do the located sites fit existing models of settlement and subsistence for valley environments of the region?

Data Needs

At the survey level, the principle research objective is a generalized investigation of changing settlement patterns in both the prehistoric and historic periods within the study area. The overall goal is to understand human settlement and resource procurement patterns in the project area. Therefore, adequate information on site function, context, and chronology from an archaeological perspective is essential for the investigation. The fieldwork and archival research were undertaken with these primary research goals in mind:

- 1) To identify cultural resources occurring within the project;
- 2) To determine, if possible, site type and function, context of the deposit, and chronological placement of each cultural resource identified;
- 3) To place each cultural resource identified within a regional perspective; and
- 4) To provide recommendations for the treatment of each of the cultural resources identified.

Applicable Regulations

Resource importance is assigned to districts, sites, buildings, structures, and objects that possess exceptional value or quality illustrating or interpreting the heritage of Riverside County in history, architecture, archaeology, engineering, and culture. A number of criteria are used in demonstrating resource importance. Expressly, criteria outlined in the CEQA provide the guidance for making such a determination. The following sections detail the specific CEQA criteria that a resource must meet in order to be determined important.

California Environmental Quality Act

According to CEQA (§15064.5a), the term “historical resource” includes the following:

- 1) A resource listed in, or determined to be eligible by the State Historical Resources Commission for listing in, the California Register of Historical Resources (Public Resources Code SS5024.1, Title 14 CCR. Section 4850 et seq.).
- 2) A resource included in a local register of historical resources, as defined in Section 5020.1(k) of the Public Resources Code or identified as significant in an historical resource survey meeting the requirements of Section 5024.1(g) of the Public Resources

Code, shall be presumed to be historically or culturally significant. Public agencies must treat any such resource as significant unless the preponderance of evidence demonstrates that it is not historically or culturally significant.

- 3) Any object, building, structure, site, area, place, record, or manuscript, which a lead agency determines to be historically significant or significant in the architectural, engineering, scientific, economic, agricultural, educational, social, political, military, or cultural annals of California may be considered to be an historical resource, provided the lead agency's determination is supported by substantial evidence in light of the whole record. Generally, a resource shall be considered by the lead agency to be "historically significant" if the resource meets the criteria for listing on the California Register of Historical Resources (Public Resources Code SS5024.1, Title 14, Section 4852) including the following:
 - a) Is associated with events that have made a significant contribution to the broad patterns of California's history and cultural heritage;
 - b) Is associated with the lives of persons important in our past;
 - c) Embodies the distinctive characteristics of a type, period, region, or method of construction, or represents the work of an important creative individual, or possesses high artistic values; or
 - d) Has yielded, or may be likely to yield, information important in prehistory or history.
- 4) The fact that a resource is not listed in, or determined eligible for listing in the California Register of Historical Resources, not included in a local register of historical resources (pursuant to Section 5020.1(k) of the Public Resources Code), or identified in an historical resources survey (meeting the criteria in Section 5024.1(g) of the Public Resources Code) does not preclude a lead agency from determining that the resource may be an historical resource as defined in Public Resources Code Section 5020.1(j) or 5024.1.

According to CEQA (§15064.5b), a project with an effect that may cause a substantial adverse change in the significance of an historical resource is a project that may have a significant effect on the environment. CEQA defines a substantial adverse change as:

- 1) Substantial adverse change in the significance of an historical resource means physical demolition, destruction, relocation, or alteration of the resource or its immediate surroundings such that the significance of an historical resource would be materially impaired.
- 2) The significance of an historical resource is materially impaired when a project:

- a) Demolishes or materially alters in an adverse manner those physical characteristics of an historical resource that convey its historical significance and that justify its inclusion in, or eligibility for, inclusion in the California Register of Historical Resources; or
- b) Demolishes or materially alters in an adverse manner those physical characteristics that account for its inclusion in a local register of historical resources pursuant to Section 5020.1(k) of the Public Resources Code or its identification in an historical resources survey meeting the requirements of Section 5024.1(g) of the Public Resources Code, unless the public agency reviewing the effects of the project establishes by a preponderance of evidence that the resource is not historically or culturally significant; or,
- c) Demolishes or materially alters in an adverse manner those physical characteristics of an historical resource that convey its historical significance and that justify its eligibility for inclusion in the California Register of Historical Resources as determined by a lead agency for purposes of CEQA.

Section 15064.5(c) of CEQA applies to effects on archaeological sites and contains the following additional provisions regarding archaeological sites:

- 1) When a project will impact an archaeological site, a lead agency shall first determine whether the site is an historical resource, as defined in subsection (a).
- 2) If a lead agency determines that the archaeological site is an historical resource, it shall refer to the provisions of Section 21084.1 of the Public Resources Code, Section 15126.4 of the guidelines, and the limits contained in Section 21083.2 of the Public Resources Code do not apply.
- 3) If an archaeological site does not meet the criteria defined in subsection (a), but does meet the definition of a unique archaeological resource in Section 21083.2 of the Public Resources Code, the site shall be treated in accordance with the provisions of Section 21083.2. The time and cost limitations described in Public Resources Code Section 21083.2 (c-f) do not apply to surveys and site evaluation activities intended to determine whether the project location contains unique archaeological resources.
- 4) If an archaeological resource is neither a unique archaeological nor historical resource, the effects of the project on those resources shall not be considered a significant effect on the environment. It shall be sufficient that both the resource and the effect on it are noted in the Initial Study or EIR, if one is prepared to address impacts on other resources, but they need not be considered further in the CEQA process.

Section 15064.5 (d) and (e) contain additional provisions regarding human remains. Regarding Native American human remains, paragraph (d) provides:

(d) When an initial study identifies the existence of, or the probable likelihood, of Native American human remains within the project, a lead agency shall work with the appropriate Native Americans as identified by the Native American Heritage Commission (NAHC) as provided in Public Resources Code SS5097.98. The applicant may develop an agreement for treating or disposing of, with appropriate dignity, the human remains and any items associated with Native American burials with the appropriate Native Americans as identified by the NAHC. Action implementing such an agreement is exempt from:

- 1) The general prohibition on disinterring, disturbing, or removing human remains from any location other than a dedicated cemetery (Health and Safety Code Section 7050.5).
- 2) The requirement of CEQA and the Coastal Act.

Perris Valley Commerce Center Specific Plan

The project is situated within the PVCC Specific Plan and is subject to the policies and regulations established within the plan's Mitigation Monitoring and Reporting Program (MMRP). The PVCC MMRP does not establish any additional local level criteria for evaluating resources beyond the standard CEQA criteria. Rather, the Specific Plan establishes that proposed projects within the PVCC must adhere to the following two measures to assess the potential for significant resources within the subject property:

- | | |
|----------------|--|
| Measure IV.A.2 | For all projects subject to CEQA, applicants will be required to submit results of an archaeological records search request through the [EIC], at the [UCR]. |
| Measure IV.A.3 | Requires Phase I survey for all projects located in areas that have not previously been surveyed for archaeological or historic resources, or which lie near areas where archaeological and /or historic sites have been recorded. (City of Perris 2011) |

V. RESULTS

Background Research and Results of Records Searches

BFSA conducted a records search utilizing information obtained from the EIC at UCR (Appendix D). The records search did not identify any resources within the subject property; however, six resources are on file with the EIC located within one mile of the project (Table 1). Most of the resources identified during the records search are historic, and consist of the Perris Indian School and Smith-Lowery Farm, farm equipment, the J.B. Mayer Ranch, Quonset huts, and

the mapped alignment of the Colorado River Aqueduct. The only prehistoric resource near the project is a bedrock milling site located just under one mile northeast of the APE.

Table 1
Previously Recorded Archaeological Sites
Within a One-Mile Radius of the First Industrial Wilson Avenue Project

Site Number	Site Description
RIV-3720	Prehistoric bedrock milling site
RIV-6726H	Historic Colorado River Aqueduct and road alignment
RIV-7744	Perris Indian School (1892 to 1904); Smith-Lowery Farm dating to circa 1910
RIV-8389	Historic farm equipment
P-33-007641	J.B Mayer Ranch
P-33-007659	Historic Quonset huts

The records search results also indicated that there have been a total of 31 cultural resource studies conducted within a one-mile radius of the project, two of which covered portions of the current project (Tang et al. 2007; Fulton 2014). The Tang et al. (2007) study was a large overview of resources within the North Perris Industrial Specific Plan; as such, it did not directly survey or discuss the current APE. Likewise, the Fulton 2014 study is a monitoring plan submitted for the Mid-County Parkway and does not include any specific information on the current project parcel.

BFSA also reviewed the following sources as part of additional archival research:

- The National Register of Historic Places (NRHP) Index
- The Office of Historic Preservation (OHP), Archaeological Determinations of Eligibility
- The OHP, Directory of Properties in the Historic Property Data File
- The 30' USGS *Elsinore* topographic map (1901)
- The 7.5' USGS *Perris* topographic maps (1954, 1969, 1980)
- Riverside County Assessor's parcel maps
- Riverside County TLMA records
- Aerial photographs (1938 through 2018) available from Historicaerials.com and Google Earth

Again, aerial photographs and maps of the property indicate no buildings have ever been located within it. Based on the maps and aerial photographs, the property traditionally was utilized for agriculture, with the only visible structures being a potential irrigation feature as seen on the 1953

and 1962 aerial photographs and two wells as seen on the 1969 7.5' USGS *Perris* topographic map.

BFSA also requested a records search of the SLF of the NAHC, which did not indicate the presence of any sacred sites or locations of religious or ceremonial importance within the APE. In accordance with the recommendations of the NAHC, BFSA contacted all Native American consultants listed in the NAHC response letter and has received six responses. The Agua Caliente Band of Cahuilla Indians deferred to the Soboba Band of Luiseño Indians and the Morongo Band of Mission Indians. The Cabazon Band of Mission Indians indicated that the project lies outside of their current reservation boundaries and traditional use area, and that they have no specific archival information indicating that the project area may be a location of Native American traditional cultural value. The Augustine Band of Cahuilla Indians stated that they were unaware of specific cultural resources that may be affected by the project and deferred to tribes more local to the area. The Cahuilla Band of Indians indicated that, while the project lies outside of their reservation boundaries, it lies within their aboriginal territory and requested that Cahuilla monitors be present during all ground disturbance. The Morongo Band of Mission Indians stated that they had no additional information to provide regarding the project at this stage, but may provide additional comments when contacted by the lead agency during the Assembly Bill (AB) 52 consultation process. The Soboba Band of Luiseño Indians indicated that the project lies within their traditional use area and requested that a Native American monitor from the Soboba Band be present during any ground disturbance associated with the project. Original correspondence is provided in Appendix E.

The potential for cultural resources to be present within a given area is usually indicated by known settlement patterns, which in western Riverside County were focused around fresh water resources and a food supply. Although canals are located near the APE, the property does not contain any natural permanent water sources or features that would have been advantageous to the prehistoric occupation in the region. Prehistoric sites within the general vicinity are primarily focused to the east, within the bedrock-laden hills surrounding Lake Perris and overlooking the San Jacinto River. Further, the records search and literature review suggest that there is a low potential for prehistoric cultural resources to be located within the APE. The results of the records search indicate that historic resources should be the primary site type present within the property considering the historic settlement of the region and the limited number of prehistoric sites recorded near the project.

Field Reconnaissance

Principal Investigator Brian F. Smith directed the pedestrian survey of the APE conducted by Project Archaeologist Andrew Garrison on January 15, 2019. Aerial photographs, maps, and a compass permitted orientation and the location of project boundaries. The survey employed narrow 10-meter transects to ensure maximum lot coverage. All exposed ground was inspected for cultural materials. Ground visibility was generally good, as the limited vegetation within the APE left much of the ground exposed. A survey form, field notes, and photographs documented

the survey work undertaken.

At the time of the survey, the proposed warehouse site was characterized as a flat, previously disturbed parcel (Plate 1). Vegetation on the property consisted mainly of non-native weeds and grasses (Plate 2). Disturbances to the property included repeated clearing and disking for agricultural use. In addition, modern garbage, concrete, and building materials were noted throughout the project parcel, but concentrated along the western boundary, adjacent to Wilson Avenue. During the survey, it was noted that the PVSD channel is located adjacent to the project, but outside of the property boundaries. Although the PVSD was initially designed and constructed in the mid- to late 1950s, the channel and all associated infrastructure, including access roads, a pedestrian/bicycle path, culverts, and bridges, are actively maintained and/or modern and, therefore, do not require any additional study for the current project. Further, regarding the current project parcel, multiple subdivisions of the original Lot 1, the creation of Wilson Avenue along the western boundary, and the development of the surrounding parcels has detached the property from its previous agricultural use. As such, the property no longer is reflective of an agricultural property and no longer conveys the historic characteristics necessary to represent a cultural landscape.



Plate 1: Overview of the project, facing northwest.



Plate 2: Overview of the project, facing southeast.

Although the property is not reflective of a cultural landscape, the location of the wells shown on the 1969 USGS *Perris* topographic map was identified during the survey. It was documented during the survey that all character-defining features had been removed and the wells filled in with concrete. All that remains in the location is a 15x8-foot concrete pad and four metal footings located just under 100 feet east of Wilson Avenue. As such, the remnant concrete is associated with the mid-twentieth century agricultural use of the property. The pad was recorded as Site Temp-1 on the appropriate 523 series Department of Parks and Recreation forms (Appendix B) and submitted to the EIC for processing. However, no artifacts or associated structures are located within the vicinity of Temp-1 and the alterations and lack of any definitive historic character-defining features indicates that the concrete pad only marginally qualifies as a resource. The location of Site Temp-1 within the project can be found on Figure 4, and a photograph of the concrete pad feature is presented in Plate 3.

Figure 4
Cultural Resource Location Map
(Deleted for Public Review; Bound Separately)



Plate 3: View of Site Temp-1, facing east.

Alterations to the surrounding landscape combined with the removal of all character-defining features has diminished the integrity of the concrete pad at Site Temp-1. Further, this type of feature is common to the area and obviously not the work of a master builder or architect. Therefore, the remnant concrete pad is not eligible for listing on the California Register of Historical Resources (CRHR) and does not qualify as a significant resource under CEQA. However, the concrete pad does further illustrate the use of the property for agriculture during the mid- to late twentieth century as established by the historic context and archival research. No significant cultural resources, either historic or prehistoric, were discovered during the survey. The lack of prehistoric sites is likely due to the absence of bedrock and dependable natural water sources at this location.

VI. RECOMMENDATIONS

The cultural resources study for the First Industrial Wilson Avenue Project did not identify any significant cultural resources within the proposed development property. Although the survey did identify the remnant of a 1960s concrete pad, it is not eligible for the CRHR and is not considered a significant resource. Further, no archaeological sites or artifacts were discovered during the survey. Therefore, no impacts to any significant cultural resources are anticipated with

the proposed development of the project.

The archaeological study was completed in accordance with the City of Perris environmental policies, including the PVCC Specific Plan FEIR, and CEQA significance evaluation criteria. As a result of previous ground-disturbing activities associated with the agricultural uses of the property, there is minimal to no potential for archaeological resources to be present or disturbed by the proposed development. Based upon the records search and the results of the field survey, no further archaeological study is recommended and no site-specific mitigation measures for cultural resources are recommended as a condition of project approval.

Although no site-specific measures are recommended and the potential for archaeological resources is low, as a result of the concerns from local Native American groups, and in accordance with the PVCC Specific Plan FEIR, Mitigation Measure (MM) Cultural 4 will be implemented (City of Perris 2011) if cultural resources are documented during grading. In accordance with MM Cultural 4, should cultural resources be identified at a development site that is not monitored by a professional archaeologist, the provisions of MM Cultural 2 and MM Cultural 3 of the PVCC Specific Plan FEIR shall apply. These mitigation measures provide the protocol for archaeological and Native American monitoring of grading and the treatment of discovered archaeological sites. Should human remains be discovered during grading, treatment of these remains shall follow California Public Resources Code 5097.9 as outlined within MM Cultural 6 of the PVCC Specific Plan FEIR.

The mitigation measures set forth within the PVCC Specific Plan FEIR for cultural resources have been included in Appendix C for reference. These measures would only be applicable in the event that archaeological sites, features, or artifacts are uncovered during grading.

VII. CERTIFICATION

I hereby certify that the statements furnished above and in the attached exhibits present the data and information required for this archaeological report, and that the facts, statements, and information presented are true and correct to the best of my knowledge and belief, and have been compiled in accordance with CEQA criteria as defined in Section 15064.5.



Brian F. Smith
Principal Investigator

May 19, 2020

Date

VIII. REFERENCES

Bean, Lowell John

- 1978 Cahuilla. In *California*, edited by Robert F. Heizer, pp. 575-587. Handbook of North American Indians, Vol. 8. William C. Sturtevant, general editor, Smithsonian Institution, Washington, D.C.

Bean, Lowell John and Florence C. Shipek

- 1978 Luiseño. In *California*, edited by R.F. Heizer, pp. 550-563. Handbook of North American Indians, Vol. 8. William C. Sturtevant, general editor, Smithsonian Institution, Washington, D.C.

Bean, Lowell John and Charles R. Smith

- 1978 Serrano. In *California*, edited by R.F. Heizer. Handbook of North American Indians, Vol. 8. William C. Sturtevant, general editor, Smithsonian Institution, Washington, D.C.

Brian F. Smith and Associates, Inc.

- Various dates. Research library holdings including Sanborn maps, USGS maps, aerial photographs, city directories, published regional histories, and geologic and paleontological references.

Brigandi, Phil

- 1998 *Temecula: At the Crossroads of History*. Heritage Media Corporation, Encinitas, California.

Byrd, Brian F.

- 1998 Harvesting the Littoral Landscape During the Late Holocene: New Perspectives from Northern San Diego County. *Journal of California and Great Basin Anthropology* 20(2):195-218.

City of Perris

- N.d. History. Electronic document, <http://www.cityofperris.org/about/history.html>, accessed January 23, 2019.
- 2011 Perris Valley Commerce Center (PVCC) Specific Plan Final EIR. Electronic document, http://www.cityofperris.org/city-hall/specific-plans/PVCC/PVCC_MMRP_11-30%2011_rev.pdf, accessed March 6, 2019.
- 2013 About Perris. Electronic document, <http://www.cityofperris.org>, accessed August 1, 2014.

Cook, Sherburne F.

- 1976 *The Conflict Between the California Indian and White Civilization*. University of

California Press, Berkeley and Los Angeles, California.

County of Riverside

- 2020 Riverside County History. Electronic document, <https://countyofriverside.us/Visitors/CountyofRiversideInformation/RiversideCountyHistory.aspx>, accessed May 5, 2020.

Erlandson, Jon M. and Roger H. Colten (editors)

- 1991 An Archaeological Context for Archaeological Sites on the California Coast. In *Hunter-Gatherers of Early Holocene Coastal California*. Perspectives in California Archaeology, Volume 1, Institute of Archaeology, University of California, Los Angeles.

Fagan, B.

- 1991 *Ancient North America: The Archaeology of a Continent*. Thames and Hudson. London.

Fulton, Phil

- 2014 Discovery and Monitoring Plan for the Mid County Parkway. LSA Associates, Inc. Unpublished report on file at the Eastern Information Center at the University of California at Riverside, Riverside, California.

Gallegos, Dennis

- 1987 A Review and Synthesis of Environmental and Cultural Material for the Batiquitos Lagoon Region. In *San Dieguito-La Jolla: Chronology and Controversy*, edited by Dennis Gallegos. San Diego County Archaeological Society Research Paper No. 1.
- 1992 Patterns and Implications of Coastal Settlement in San Diego County: 9,000 to 1,300 Years Ago. In *Essays on the Prehistory of Maritime California*, edited by Terry Jones. Center for Archaeological Research, Davis, California.

Gallegos, Dennis R. and Carolyn E. Kyle

- 1988 Five Thousand Years of Maritime Subsistence at Ballast Point Prehistoric Site SDI-48 (W-164) San Diego, California. Unpublished report on file at the South Coastal Information Center at San Diego State University, San Diego, California.

Handley, C.

- 1967 The Sun City Story. *Sun City News*, Sun City, California.

Hoffman, Ogden

- 1862 Reports of Land Cases Determined in the United States District Court for the Northern District of California, Numa Hubert, San Francisco.

Koerper, Henry, C., Jonathan E. Ericson, Christopher E. Drover, and Paul E. Langenwaller, II

- 1986 Obsidian Exchange in Prehistoric Orange County. *Pacific Coast Archaeological Society Quarterly* 22 (1):33-69.

Kowta, Makoto

- 1969 The Sayles Complex: A Late Millingstone Assemblage from Cajon Pass, and the Econological Implications of its Scraper Planes. *University of California Prehistory* (6), Salina, California.

Kroeber, A.L.

- 1976 *Handbook of the Indians of California*. Reprinted. Dover Editions, Dover Publications, Inc., New York. Originally published 1925, Bulletin No. 78, U.S. Government Printing Office, Washington, D.C.

Laylander, Don (editor)

- 1985 Some Linguistic Approaches to Southern California's Prehistory. *San Diego State University Cultural Resource Management Casual Papers* 2(1):14-58.

Lech, Steve

- 2004 American Local History Network's Page for Riverside County, California. Electronic document, <http://www.usgennet.org/usa/ca/county/riverside/>, accessed March 28, 2006.

March Field Air Museum

- 2020 History of March Air Reserve Base. Electronic document, <https://www.marchfield.org/visit/about-us/march-air-reserve-base-history/>, accessed May 18, 2020.

Martin, P.S.

- 1967 Prehistoric Overkill. In *Pleistocene Extinctions: The Search for a Cause*, edited by P. Martin and H.E. Wright. Yale University Press: New Haven.
- 1973 The Discovery of America. *Science* 179(4077): 969-974.

Masters, Patricia M.

- 1983 Detection and Assessment of Prehistoric Artifact Sites off the Coast of Southern California. In *Quaternary Coastlines and Marine Archaeology: Towards the Prehistory of Land Bridges and Continental Shelves*, edited by P.M. Masters and N.C. Flemming, pp. 189-213. Academic Press, London.

Meighan, Clement W.

- 1954 A Late Complex in Southern California Prehistory. *Southwestern Journal of Anthropology* 10(2).

Miller, J.

- 1966 *The Present and Past Molluscan Faunas and Environments of Four Southern California Coastal Lagoons*. Master's thesis on file at the University of California at San Diego, San Diego, California.

Moratto, Michael J.

1984 *California Archaeology*. Academic Press, New York.

Moriarty, James R., III

1966 Culture Phase Divisions Suggested by Topological Change Coordinated with Stratigraphically Controlled Radiocarbon Dating in San Diego. *Anthropological Journal of Canada* 4(4):20-30.

Moss, M.L. and J. Erlandson

1995 Reflections on North American Coast Prehistory. *Journal of World Prehistory* 9(1):1-46.

Pourade, Richard F.

1964 *The Glory Years*. Union-Tribune Publishing Company, San Diego.

Ramirez, Ruben S., Jr.

2016 General MSHCP Habitat Assessment/Constraints Analysis for the CR&R BioGas Service Pipeline Project Site, City of Perris, California. Cadre Environmental, c/o Brian F. Smith and Associates, Inc. Prepared for CR&R Environmental Services, Inc. Unpublished report on file at Brian F. Smith and Associates, Inc., Poway, California.

Raven-Jennings, Shelly, Brian F. Smith and Johnna L. Buysse

1996 The Results of a Cultural Resource Study at the 4S Ranch, Rancho Bernardo, County of San Diego. Unpublished report on file at the South Coastal Information Center at San Diego State University, San Diego, California.

Robinson, John W.

1997 Rancho San Jacinto Viejo and the Estudillo Family. In *Rancho Days in Southern California*, (Los Angeles: Los Angeles Corral of the Westerners), pp. 143-161.

Rogers, Malcolm J.

1939 Early Lithic Industries of the Lower Basin of the Colorado River and Adjacent Desert Areas. In *San Diego Museum Papers* (3) [1989 printing]. San Diego Museum of Man, San Diego, California.

Rolle, Andrew F.

1969 *California: A History* (Second Edition). Thomas Y. Crowell Company, New York.

Shumway, George, Carl L. Hubbs, and James R. Moriarty, III

1961 Scripps Estate Site, San Diego, California: A La Jolla Site Dated 5,460-7,370 Years Before the Present. *Annals of the New York Academy of Sciences* 93(3).

Smith, Brian F. and James R. Moriarty, III

1985 The Archaeological Excavations at Batiquitos Pointe and Batiquitos Bluffs. Unpublished report on file at the City of Carlsbad, Carlsbad, California.

Strong, William Duncan

- 1929 Aboriginal Society in Southern California. *University of California Publications in American Archaeology and Ethnology* 26(1).

Sutton, Mark Q.

- 2009 People and Language: Defining the Takic Expansion into Southern California. *Pacific Coast Archaeological Society Quarterly* 41(2&3): 33-93.

- 2011a The Palomar Tradition and Its Place in the Prehistory of Southern California. *Pacific Coast Archaeological Society Quarterly* 44(4):1-74.

- 2011b *A Prehistory of North America*. Routledge, New York.

Sutton, Mark Q. and Jill K. Gardener

- 2010 Reconceptualizing the Encinitas Tradition of Southern California. *Pacific Coast Archaeological Society Quarterly* 42(4):1-64.

Tang, Bai "Tom", Michael Hogan, Clarence Bodmer, Josh Smallwood, and Melissa Hernandez

- 2007 Cultural Resources Technical Report, North Perris Industrial Specific Plan, City of Perris, Riverside County, California. CRM Tech. Unpublished report on file at Eastern Information Center at University of California Riverside, Riverside, California.

True, Delbert L.

- 1958 An Early Complex in San Diego County, California. *American Antiquity* 23(3).

- 1980 The Pauma Complex in Northern San Diego County. *The Journal of New World Archaeology* 3(4):1-39

Wallace, William J.

- 1955 A Suggested Chronology for Southern California Coastal Archaeology. *Southwestern Journal of Anthropology* 11:214-230.

Warren, Claude N.

- 1968 Cultural Tradition and Ecological Adaptation on the Southern Coast. In *Archaic Prehistory in the Western United States*, edited by C.I. Williams. *Eastern New Mexico University Contributions in Anthropology* 1(3): 1-14.

Warren, Claude N. and D.L. True

- 1961 The San Dieguito Complex and its Place in California Prehistory. *Archaeological Survey Annual Report* 1960-1961. University of California Press, Los Angeles, California.

Warren, Claude N., D.L. True, and Ardith A. Eudey

- 1961 Early Gathering Complexes of Western San Diego County: Results and Interpretations

of an Archaeological Survey. *Archaeological Survey Annual Report* 1960-1961.
University of California, Los Angeles.

APPENDIX A

Qualifications of Key Personnel

Brian F. Smith, MA

Owner, Principal Investigator

Brian F. Smith and Associates, Inc.
14010 Poway Road • Suite A •
Phone: (858) 679-8218 • Fax: (858) 679-9896 • E-Mail: bsmith@bfsa-ca.com



Education

Master of Arts, History, University of San Diego, California 1982

Bachelor of Arts, History, and Anthropology, University of San Diego, California 1975

Professional Memberships

Society for California Archaeology

Experience

Principal Investigator
Brian F. Smith and Associates, Inc.

1977–Present
Poway, California

Brian F. Smith is the owner and principal historical and archaeological consultant for Brian F. Smith and Associates. Over the past 32 years, he has conducted over 2,500 cultural resource studies in California, Arizona, Nevada, Montana, and Texas. These studies include every possible aspect of archaeology from literature searches and large-scale surveys to intensive data recovery excavations. Reports prepared by Mr. Smith have been submitted to all facets of local, state, and federal review agencies, including the US Army Corps of Engineers, the Bureau of Land Management, the Bureau of Reclamation, the Department of Defense, and the Department of Homeland Security. In addition, Mr. Smith has conducted studies for utility companies (Sempra Energy) and state highway departments (CalTrans).

Professional Accomplishments

These selected major professional accomplishments represent research efforts that have added significantly to the body of knowledge concerning the prehistoric life ways of cultures once present in the Southern California area and historic settlement since the late 18th century. Mr. Smith has been principal investigator on the following select projects, except where noted.

Downtown San Diego Mitigation and Monitoring Reporting Programs: Large numbers of downtown San Diego mitigation and monitoring projects, some of which included Broadway Block (2019), 915 Grape Street (2019), 1919 Pacific Highway (2018), Moxy Hotel (2018), Makers Quarter Block D (2017), Ballpark Village (2017), 460 16th Street (2017), Kettner and Ash (2017), Bayside Fire Station (2017), Pinnacle on the Park (2017), IDEA1 (2016), Blue Sky San Diego (2016), Pacific Gate (2016), Pendry Hotel (2015), Cisterra Sempra Office Tower (2014), 15th and Island (2014), Park and G (2014), Comm 22 (2014), 7th and F Street Parking (2013), Ariel Suites (2013), 13th and Marker (2012), Strata (2008), Hotel Indigo (2008), Lofts at 707 10th Avenue Project (2007), Breeza (2007), Bayside at the Embarcadero (2007), Aria (2007), Icon (2007), Vantage Pointe (2007), Aperture (2007), Sapphire Tower (2007), Lofts at 655 Sixth Avenue (2007), Metrowork (2007), The Legend (2006), The Mark (2006), Smart Corner (2006), Lofts at 677 7th Avenue (2005), Aloft on Cortez Hill (2005), Front and Beech Apartments (2003), Bella Via Condominiums (2003), Acqua Vista Residential Tower (2003), Northblock Lofts (2003), Westin Park Place Hotel (2001), Parkloft

Apartment Complex (2001), Renaissance Park (2001), and Laurel Bay Apartments (2001).

1900 and 1912 Spindrift Drive: An extensive data recovery and mitigation monitoring program at the Spindrift Site, an important prehistoric archaeological habitation site stretching across the La Jolla area. The project resulted in the discovery of over 20,000 artifacts and nearly 100,000 grams of bulk faunal remains and marine shell, indicating a substantial occupation area (2013-2014).

Emerald Acres: Archaeological survey and testing program of 14 archaeological sites across 333 acres in the Winchester area of Riverside County (2000-2018).

San Diego Airport Development Project: An extensive historic assessment of multiple buildings at the San Diego International Airport and included the preparation of Historic American Buildings Survey documentation to preserve significant elements of the airport prior to demolition (2017-2018).

Citracado Parkway Extension: A still-ongoing project in the city of Escondido to mitigate impacts to an important archaeological occupation site. Various archaeological studies have been conducted by BFSa resulting in the identification of a significant cultural deposit within the project area.

Westin Hotel and Timeshare (Grand Pacific Resorts): Data recovery and mitigation monitoring program in the city of Carlsbad consisted of the excavation of 176 one-square-meter archaeological data recovery units which produced thousands of prehistoric artifacts and ecofacts, and resulted in the preservation of a significant prehistoric habitation site. The artifacts recovered from the site presented important new data about the prehistory of the region and Native American occupation in the area (2017).

Citracado Business Park West: An archaeological survey and testing program at a significant prehistoric archaeological site and historic building assessment for a 17-acre project in the city of Escondido. The project resulted in the identification of 82 bedrock milling features, two previously recorded loci and two additional and distinct loci, and approximately 2,000 artifacts (2018).

The Everly Subdivision Project: Data recovery and mitigation monitoring program in the city of El Cajon resulted in the identification of a significant prehistoric occupation site from both the Late Prehistoric and Archaic Periods, as well as producing historic artifacts that correspond to the use of the property since 1886. The project produced an unprecedented quantity of artifacts in comparison to the area encompassed by the site, but lacked characteristics that typically reflect intense occupation, indicating that the site was used intensively for food processing (2014-2015).

Ballpark Village: A mitigation and monitoring program within three city blocks in the East Village area of San Diego resulting in the discovery of a significant historic deposit. Nearly 5,000 historic artifacts and over 500,000 grams of bulk historic building fragments, food waste, and other materials representing an occupation period between 1880 and 1917 were recovered (2015-2017).

Archaeology at the Padres Ballpark: Involved the analysis of historic resources within a seven-block area of the "East Village" area of San Diego, where occupation spanned a period from the 1870s to the 1940s. Over a period of two years, BFSa recovered over 200,000 artifacts and hundreds of pounds of metal, construction debris, unidentified broken glass, and wood. Collectively, the Ballpark Project and the other downtown mitigation and monitoring projects represent the largest historical archaeological program anywhere in the country in the past decade (2000-2007).

4S Ranch Archaeological and Historical Cultural Resources Study: Data recovery program consisted of the excavation of over 2,000 square meters of archaeological deposits that produced over one million artifacts, containing primarily prehistoric materials. The archaeological program at 4S Ranch is the largest archaeological study ever undertaken in the San Diego County area and has produced data that has exceeded expectations regarding the resolution of long-standing research questions and regional prehistoric settlement patterns.

Charles H. Brown Site: Attracted international attention to the discovery of evidence of the antiquity of man in North America. Site located in Mission Valley, in the city of San Diego.

Del Mar Man Site: Study of the now famous Early Man Site in Del Mar, California, for the San Diego Science Foundation and the San Diego Museum of Man, under the direction of Dr. Spencer Rogers and Dr. James R. Moriarty.

Old Town State Park Projects: Consulting Historical Archaeologist. Projects completed in the Old Town State Park involved development of individual lots for commercial enterprises. The projects completed in Old Town include Archaeological and Historical Site Assessment for the Great Wall Cafe (1992), Archaeological Study for the Old Town Commercial Project (1991), and Cultural Resources Site Survey at the Old San Diego Inn (1988).

Site W-20, Del Mar, California: A two-year-long investigation of a major prehistoric site in the Del Mar area of the city of San Diego. This research effort documented the earliest practice of religious/ceremonial activities in San Diego County (circa 6,000 years ago), facilitated the projection of major non-material aspects of the La Jolla Complex, and revealed the pattern of civilization at this site over a continuous period of 5,000 years. The report for the investigation included over 600 pages, with nearly 500,000 words of text, illustrations, maps, and photographs documenting this major study.

City of San Diego Reclaimed Water Distribution System: A cultural resource study of nearly 400 miles of pipeline in the city and county of San Diego.

Master Environmental Assessment Project, City of Poway: Conducted for the City of Poway to produce a complete inventory of all recorded historic and prehistoric properties within the city. The information was used in conjunction with the City's General Plan Update to produce a map matrix of the city showing areas of high, moderate, and low potential for the presence of cultural resources. The effort also included the development of the City's Cultural Resource Guidelines, which were adopted as City policy.

Draft of the City of Carlsbad Historical and Archaeological Guidelines: Contracted by the City of Carlsbad to produce the draft of the City's historical and archaeological guidelines for use by the Planning Department of the City.

The Mid-Bayfront Project for the City of Chula Vista: Involved a large expanse of undeveloped agricultural land situated between the railroad and San Diego Bay in the northwestern portion of the city. The study included the analysis of some potentially historic features and numerous prehistoric

Cultural Resources Survey and Test of Sites Within the Proposed Development of the Audie Murphy Ranch, Riverside County, California: Project manager/director of the investigation of 1,113.4 acres and 43 sites, both prehistoric and historic—including project coordination; direction of field crews; evaluation of sites for significance based on County of Riverside and CEQA guidelines; assessment of cupule, pictograph, and rock shelter sites, co-authoring of cultural resources project report. February- September 2002.

Cultural Resources Evaluation of Sites Within the Proposed Development of the Otay Ranch Village 13 Project, San Diego County, California: Project manager/director of the investigation of 1,947 acres and 76 sites, both prehistoric and historic—including project coordination and budgeting; direction of field crews; assessment of sites for significance based on County of San Diego and CEQA guidelines; co-authoring of cultural resources project report. May-November 2002.

Cultural Resources Survey for the Remote Video Surveillance Project, El Centro Sector, Imperial County: Project manager/director for a survey of 29 individual sites near the U.S./Mexico Border for proposed video surveillance camera locations associated with the San Diego Border barrier Project—project coordination and budgeting; direction of field crews; site identification and recordation; assessment of

potential impacts to cultural resources; meeting and coordinating with U.S. Army Corps of Engineers, U.S. Border Patrol, and other government agencies involved; co-authoring of cultural resources project report. January, February, and July 2002.

Cultural Resources Survey and Test of Sites Within the Proposed Development of the Meniffee West GPA, Riverside County, California: Project manager/director of the investigation of nine sites, both prehistoric and historic—included project coordination and budgeting; direction of field crews; assessment of sites for significance based on County of Riverside and CEQA guidelines; historic research; co-authoring of cultural resources project report. January-March 2002.

Mitigation of An Archaic Cultural Resource for the Eastlake III Woods Project for the City of Chula Vista, California: Project archaeologist/ director—included direction of field crews; development and completion of data recovery program including collection of material for specialized faunal and botanical analyses; assessment of sites for significance based on CEQA guidelines; management of artifact collections cataloging and curation; data synthesis; co-authoring of cultural resources project report, in prep. September 2001-March 2002.

Cultural Resources Survey and Test of Sites Within the Proposed French Valley Specific Plan/EIR, Riverside County, California: Project manager/director of the investigation of two prehistoric and three historic sites—included project coordination and budgeting; survey of project area; Native American consultation; direction of field crews; assessment of sites for significance based on CEQA guidelines; cultural resources project report in prep. July-August 2000.

Cultural Resources Survey and Test of Sites Within the Proposed Lawson Valley Project, San Diego County, California: Project manager/director of the investigation of 28 prehistoric and two historic sites—included project coordination; direction of field crews; assessment of sites for significance based on CEQA guidelines; cultural resources project report in prep. July-August 2000.

Cultural Resource Survey and Geotechnical Monitoring for the Mohyi Residence Project, La Jolla, California: Project manager/director of the investigation of a single-dwelling parcel—included project coordination; field survey; assessment of parcel for potentially buried cultural deposits; monitoring of geotechnical borings; authoring of cultural resources project report. Brian F. Smith and Associates, San Diego, California. June 2000.

Enhanced Cultural Resource Survey and Evaluation for the Prewitt/Schmucker/Cavadias Project, La Jolla, California: Project manager/director of the investigation of a single-dwelling parcel—included project coordination; direction of field crews; assessment of parcel for potentially buried cultural deposits; authoring of cultural resources project report. June 2000.

Cultural Resources Survey and Test of Sites Within the Proposed Development of the Meniffee Ranch, Riverside County, California: Project manager/director of the investigation of one prehistoric and five historic sites—included project coordination and budgeting; direction of field crews; feature recordation; historic structure assessments; assessment of sites for significance based on CEQA guidelines; historic research; co-authoring of cultural resources project report. February-June 2000.

Salvage Mitigation of a Portion of the San Diego Presidio Identified During Water Pipe Construction for the City of San Diego, California: Project archaeologist/director—included direction of field crews; development and completion of data recovery program; management of artifact collections cataloging and curation; data synthesis and authoring of cultural resources project report in prep. April 2000.

Enhanced Cultural Resource Survey and Evaluation for the Tyrian 3 Project, La Jolla, California: Project manager/director of the investigation of a single-dwelling parcel—included project coordination; assessment of parcel for potentially buried cultural deposits; authoring of cultural resources project report. April 2000.

Enhanced Cultural Resource Survey and Evaluation for the Lamont 5 Project, Pacific Beach, California: Project manager/director of the investigation of a single-dwelling parcel—including project coordination; assessment of parcel for potentially buried cultural deposits; authoring of cultural resources project report. April 2000.

Enhanced Cultural Resource Survey and Evaluation for the Reiss Residence Project, La Jolla, California: Project manager/director of the investigation of a single-dwelling parcel—including project coordination; assessment of parcel for potentially buried cultural deposits; authoring of cultural resources project report. March-April 2000.

Salvage Mitigation of a Portion of Site SDM-W-95 (CA-SDI-211) for the Poinsettia Shores Santalina Development Project and Caltrans, Carlsbad, California: Project archaeologist/ director—including direction of field crews; development and completion of data recovery program; management of artifact collections cataloging and curation; data synthesis and authoring of cultural resources project report in prep. December 1999-January 2000.

Survey and Testing of Two Prehistoric Cultural Resources for the Airway Truck Parking Project, Otay Mesa, California: Project archaeologist/director—including direction of field crews; development and completion of testing recovery program; assessment of site for significance based on CEQA guidelines; authoring of cultural resources project report, in prep. December 1999-January 2000.

Cultural Resources Phase I and II Investigations for the Tin Can Hill Segment of the Immigration and Naturalization Services Triple Fence Project Along the International Border, San Diego County, California: Project manager/director for a survey and testing of a prehistoric quarry site along the border—NRHP eligibility assessment; project coordination and budgeting; direction of field crews; feature recordation; meeting and coordinating with U.S. Army Corps of Engineers; co-authoring of cultural resources project report. December 1999-January 2000.

Mitigation of a Prehistoric Cultural Resource for the Westview High School Project for the City of San Diego, California: Project archaeologist/ director—including direction of field crews; development and completion of data recovery program including collection of material for specialized faunal and botanical analyses; assessment of sites for significance based on CEQA guidelines; management of artifact collections cataloging and curation; data synthesis; co-authoring of cultural resources project report, in prep. October 1999-January 2000.

Mitigation of a Prehistoric Cultural Resource for the Otay Ranch SPA-One West Project for the City of Chula Vista, California: Project archaeologist/director—including direction of field crews; development of data recovery program; management of artifact collections cataloging and curation; assessment of site for significance based on CEQA guidelines; data synthesis; authoring of cultural resources project report, in prep. September 1999-January 2000.

Monitoring of Grading for the Herschel Place Project, La Jolla, California: Project archaeologist/ monitor—including monitoring of grading activities associated with the development of a single- dwelling parcel. September 1999.

Survey and Testing of a Historic Resource for the Osterkamp Development Project, Valley Center, California: Project archaeologist/ director—including direction of field crews; development and completion of data recovery program; budget development; assessment of site for significance based on CEQA guidelines; management of artifact collections cataloging and curation; data synthesis; authoring of cultural resources project report. July-August 1999.

Survey and Testing of a Prehistoric Cultural Resource for the Proposed College Boulevard Alignment Project, Carlsbad, California: Project manager/director —including direction of field crews; development and completion of testing recovery program; assessment of site for significance based on CEQA guidelines; management of artifact collections cataloging and curation; data synthesis;

authoring of cultural resources project report, in prep. July-August 1999.

Survey and Evaluation of Cultural Resources for the Palomar Christian Conference Center Project, Palomar Mountain, California: Project archaeologist—including direction of field crews; assessment of sites for significance based on CEQA guidelines; management of artifact collections cataloging and curation; data synthesis; authoring of cultural resources project report. July-August 1999.

Survey and Evaluation of Cultural Resources at the Village 2 High School Site, Otay Ranch, City of Chula Vista, California: Project manager/director—management of artifact collections cataloging and curation; assessment of site for significance based on CEQA guidelines; data synthesis; authoring of cultural resources project report. July 1999.

Cultural Resources Phase I, II, and III Investigations for the Immigration and Naturalization Services Triple Fence Project Along the International Border, San Diego County, California: Project manager/director for the survey, testing, and mitigation of sites along border—supervision of multiple field crews, NRHP eligibility assessments, Native American consultation, contribution to Environmental Assessment document, lithic and marine shell analysis, authoring of cultural resources project report. August 1997- January 2000.

Phase I, II, and III Investigations for the Scripps Poway Parkway East Project, Poway California: Project archaeologist/project director—including recordation and assessment of multicomponent prehistoric and historic sites; direction of Phase II and III investigations; direction of laboratory analyses including prehistoric and historic collections; curation of collections; data synthesis; coauthorship of final cultural resources report. February 1994; March-September 1994; September-December 1995.

Archaeological Evaluation of Cultural Resources Within the Proposed Corridor for the San Elijo Water Reclamation System Project, San Elijo, California: Project manager/director—test excavations; direction of artifact identification and analysis; graphics production; coauthorship of final cultural resources report. December 1994-July 1995.

Evaluation of Cultural Resources for the Environmental Impact Report for the Rose Canyon Trunk Sewer Project, San Diego, California: Project manager/Director—direction of test excavations; identification and analysis of prehistoric and historic artifact collections; data synthesis; co-authorship of final cultural resources report, San Diego, California. June 1991-March 1992.

Reports/Papers

Author, coauthor, or contributor to over 2,500 cultural resources management publications, a selection of which are presented below.

- 2019 Final Archaeological Data Recovery and Mitigation Monitoring Program for the Westin Hotel and Timeshare Project, City of Carlsbad, California.
- 2019 A Phase I and II Cultural Resources Assessment for the Jack Rabbit Trail Logistics Center Project, City of Beaumont, Riverside County, California.
- 2019 A Section 106 (NHPA) Historic Resources Study for the Altair Project, City of Temecula, California.
- 2019 Phase II Cultural Resource Study for the McElwain Project, City of Murrieta, California.
- 2019 Cultural Resources Mitigation Monitoring Report for the Family Dollar Mecca Project, Riverside County, California.

- 2019 A Cultural Resources Assessment for TR 37177, City of Riverside, Riverside County, California.
- 2019 Cultural Resources Monitoring Report for the Westlake Project (TM 33267), City of Lake Elsinore, Riverside County, California.
- 2019 A Phase I Cultural Resources Survey for the Go Fresh Gas Project, Perris, California.
- 2019 Cultural Resources Monitoring Report for the South Milliken Distribution Center Project, City of Eastvale, Riverside County, California.
- 2019 A Class III Section 106 (NHPA) Study for the Perris Valley Storm Drain Channel Widening Project, Perris, Riverside County, California.
- 2019 A Section 106 (NHPA) Historic Resources Study for the Twin Channel Project, City of San Bernardino, San Bernardino County, California.
- 2019 A Class III Archaeological Study for the Tuscany Valley (TM 33725) Project National Historic Preservation Act Section 106 Compliance, Lake Elsinore, Riverside County, California.
- 2019 A Phase I Cultural Resources Survey for the IPT Perris DC III Western/Nandina Project, Perris, California.
- 2019 A Phase I Cultural Resources Assessment for the Menifee Gateway Project, City of Menifee, Riverside County, California.
- 2019 Results of Archaeological Monitoring at the Atwell Phase 1A Project (formerly Butterfield Specific Plan), City of Banning, Riverside County, California.
- 2019 A Phase I Cultural Resource Study for the Eastvale Self Storage Project, Eastvale, California.
- 2019 A Phase I Cultural Resources Survey Report for the Commercial/Retail NWC Mountain and Lake Streets Project, City of Lake Elsinore, Riverside County, California.
- 2019 A Phase I Cultural Resources Assessment for the Anza Baptist Church Project, Riverside County, California.
- 2019 A Phase I Cultural Resources Assessment for the Inland Propane Project, Riverside County, California.
- 2019 A Phase I and II Cultural Resources Assessment for the Seaton Commerce Center Project, Riverside County, California.
- 2019 A Phase I Cultural Resources Assessment for the Val Verde Logistics Center Project, Riverside County, California.
- 2019 A Phase I Cultural Resources Assessment for the Santa Gertrudis Creek Pedestrian/Bicycle Trail Extension and Interconnect Project, City of Temecula, Riverside County, California.
- 2019 Cultural Resource Report for the U.S. Allied Carriers Project, City of Riverside, Riverside County, California.
- 2018 A Section 106 (NHPA) Historical Resources Study for the Otay Ranch Village 13 Project, County of San Diego.
- 2018 An Archaeological/Historical Study for the Citracado Business Park West Project, City of Escondido.

- 2018 Cultural Resources Monitoring Report for the Uptown Bressi Ranch Project, Carlsbad.
- 2018 A Phase I Cultural Resources Assessment for the South Pointe Banning Project, CUP 180010, Riverside County, California.
- 2018 Mitigation Monitoring Report for the Stedman Residence Project, 9030 La Jolla Shores Lane, La Jolla, California 92037.
- 2018 Historic Resources Interim Monitoring Reports No. 1 through 4 for the LADOT Bus Maintenance and CNG Fueling Facility, Los Angeles.
- 2018 A Phase I and II Cultural Resources Assessment for the Emerald Acres Project, Winchester, Riverside County.
- 2018 Mitigation Monitoring Report for the Green Dragon Project, City of San Diego.
- 2017 Cultural Resource Monitoring Report for the Moxy Hotel Project, San Diego, California.
- 2017 Mitigation Monitoring Report for the Bayside Fire Station, City of San Diego.
- 2017 Mitigation Monitoring Program for the Ballpark Village Project, City of San Diego.
- 2017 Historical Resource Research Report for the Herbert and Alexina Childs/Thomas L. Shepherd House, 210 Westbourne Street, La Jolla, California 92037.
- 2017 A Phase I and II Cultural Resources Assessment for the Alberhill Ranch Specific Plan Amendment No. 3.1 Project, City of Lake Elsinore, Riverside County, California.
- 2017 A Cultural Resources Mitigation Monitoring Report for the Golden City Project, Tracts 28532-1, -2, -3, -4, and -5, and Tract 34445, City of Murrieta, California.
- 2016 Mitigation Monitoring Report for the Blue Sky San Diego Project, City of San Diego.
- 2016 Historic Resource Research Report for the Midway Postal Service and Distribution Center, 2535 Midway Drive, San Diego, California 92138.
- 2016 Results of the Mitigation Monitoring Program for the Amitai Residence Project, 2514 Ellentown Road, La Jolla, California 92037.
- 2016 Historic American Buildings Survey, Los Angeles Memorial Sports Arena.
- 2015 An Archaeological/Historical Study for the Safari Highlands Ranch Project, City of Escondido, County of San Diego.
- 2015 A Phase I and II Cultural Resources Assessment for the Decker Parcels II Project, Planning Case No. 36962, Riverside County, California.
- 2015 A Phase I and II Cultural Resources Assessment for the Decker Parcels I Project, Planning Case No. 36950, Riverside County, California.
- 2015 Cultural Resource Data Recovery and Mitigation Monitoring Program for Site SDI-10,237 Locus F, Everly Subdivision Project, El Cajon, California.
- 2015 Phase I Cultural Resource Survey for the Woodward Street Senior Housing Project, City of San Marcos, California (APN 218-120-31).

- 2015 An Updated Cultural Resource Survey for the Box Springs Project (TR 33410), APNs 255-230-010, 255-240-005, 255-240-006, and Portions of 257-180-004, 257-180-005, and 257-180-006.
- 2015 A Phase I and II Cultural Resource Report for the Lake Ranch Project, TR 36730, Riverside County, California.
- 2015 A Phase II Cultural Resource Assessment for the Munro Valley Solar Project, Inyo County, California.
- 2014 Cultural Resources Monitoring Report for the Diamond Valley Solar Project, Community of Winchester, County of Riverside.
- 2014 National Historic Preservation Act Section 106 Compliance for the Proposed Saddleback Estates Project, Riverside County, California.
- 2014 A Phase II Cultural Resource Evaluation Report for RIV-8137 at the Toscana Project, TR 36593, Riverside County, California.
- 2014 Cultural Resources Study for the Estates at Del Mar Project, City of Del Mar, San Diego, California (TTM 14-001).
- 2014 Cultural Resources Study for the Aliso Canyon Major Subdivision Project, Rancho Santa Fe, San Diego County, California.
- 2014 Cultural Resources Due Diligence Assessment of the Ocean Colony Project, City of Encinitas.
- 2014 A Phase I and Phase II Cultural Resource Assessment for the Citrus Heights II Project, TTM 36475, Riverside County, California.
- 2013 A Phase I Cultural Resource Assessment for the Modular Logistics Center, Moreno Valley, Riverside County, California.
- 2013 A Phase I Cultural Resources Survey of the Ivey Ranch Project, Thousand Palms, Riverside County, California.
- 2013 Cultural Resources Report for the Emerald Acres Project, Riverside County, California.
- 2013 A Cultural Resources Records Search and Review for the Pala Del Norte Conservation Bank Project, San Diego County, California.
- 2013 An Updated Phase I Cultural Resources Assessment for Tentative Tract Maps 36484 and 36485, Audie Murphy Ranch, City of Menifee, County of Riverside.
- 2013 El Centro Town Center Industrial Development Project (EDA Grant No. 07-01-06386); Result of Cultural Resource Monitoring.
- 2013 Cultural Resources Survey Report for the Renda Residence Project, 9521 La Jolla Farms Road, La Jolla, California.
- 2013 A Phase I Cultural Resource Study for the Ballpark Village Project, San Diego, California.
- 2013 Archaeological Monitoring and Mitigation Program, San Clemente Senior Housing Project, 2350 South El Camino Real, City of San Clemente, Orange County, California (CUP No. 06-065; APN-060-032-04).
- 2012 Mitigation Monitoring Report for the Los Peñasquitos Recycled Water Pipeline.

- 2012 Cultural Resources Report for Meniffee Heights (Tract 32277).
- 2012 A Phase I Cultural Resource Study for the Altman Residence at 9696 La Jolla Farms Road, La Jolla, California 92037.
- 2012 Mission Ranch Project (TM 5290-1/MUP P87-036W3): Results of Cultural Resources Monitoring During Mass Grading.
- 2012 A Phase I Cultural Resource Study for the Payan Property Project, San Diego, California.
- 2012 Phase I Archaeological Survey of the Rieger Residence, 13707 Durango Drive, Del Mar, California 92014, APN 300-369-49.
- 2011 Mission Ranch Project (TM 5290-1/MUP P87-036W3): Results of Cultural Resources Monitoring During Mass Grading.
- 2011 Mitigation Monitoring Report for the 1887 Viking Way Project, La Jolla, California.
- 2011 Cultural Resource Monitoring Report for the Sewer Group 714 Project.
- 2011 Results of Archaeological Monitoring at the 10th Avenue Parking Lot Project, City of San Diego, California (APNs 534-194-02 and 03).
- 2011 Archaeological Survey of the Pelberg Residence for a Bulletin 560 Permit Application; 8335 Camino Del Oro; La Jolla, California 92037 APN 346-162-01-00.
- 2011 A Cultural Resources Survey Update and Evaluation for the Robertson Ranch West Project and an Evaluation of National Register Eligibility of Archaeological sites for Sites for Section 106 Review (NHPA).
- 2011 Mitigation Monitoring Report for the 43rd and Logan Project.
- 2011 Mitigation Monitoring Report for the Sewer Group 682 M Project, City of San Diego Project #174116.
- 2011 A Phase I Cultural Resource Study for the Nooren Residence Project, 8001 Calle de la Plata, La Jolla, California, Project No. 226965.
- 2011 A Phase I Cultural Resource Study for the Keating Residence Project, 9633 La Jolla Farms Road, La Jolla, California 92037.
- 2010 Mitigation Monitoring Report for the 15th & Island Project, City of San Diego; APNs 535-365-01, 535-365-02 and 535-392-05 through 535-392-07.
- 2010 Archaeological Resource Report Form: Mitigation Monitoring of the Sewer and Water Group 772 Project, San Diego, California, W.O. Nos. 187861 and 178351.
- 2010 Pottery Canyon Site Archaeological Evaluation Project, City of San Diego, California, Contract No. H105126.
- 2010 Archaeological Resource Report Form: Mitigation Monitoring of the Racetrack View Drive Project, San Diego, California; Project No. 163216.
- 2010 A Historical Evaluation of Structures on the Butterfield Trails Property.
- 2010 Historic Archaeological Significance Evaluation of 1761 Haydn Drive, Encinitas, California (APN

260-276-07-00).

- 2010 Results of Archaeological Monitoring of the Heller/Nguyen Project, TPM 06-01, Poway, California.
- 2010 Cultural Resource Survey and Evaluation Program for the Sunday Drive Parcel Project, San Diego County, California, APN 189-281-14.
- 2010 Archaeological Resource Report Form: Mitigation Monitoring of the Emergency Garnet Avenue Storm Drain Replacement Project, San Diego, California, Project No. B10062
- 2010 An Archaeological Study for the 1912 Spindrift Drive Project
- 2009 Cultural Resource Assessment of the North Ocean Beach Gateway Project City of San Diego #64A-003A; Project #154116.
- 2009 Archaeological Constraints Study of the Morgan Valley Wind Assessment Project, Lake County, California.
- 2008 Results of an Archaeological Review of the Helen Park Lane 3.1-acre Property (APN 314-561-31), Poway, California.
- 2008 Archaeological Letter Report for a Phase I Archaeological Assessment of the Valley Park Condominium Project, Ramona, California; APN 282-262-75-00.
- 2007 Archaeology at the Ballpark. Brian F. Smith and Associates, San Diego, California. Submitted to the Centre City Development Corporation.
- 2007 Result of an Archaeological Survey for the Villages at Promenade Project (APNs 115-180-007-3, 115-180-049-1, 115-180-042-4, 115-180-047-9) in the City of Corona, Riverside County.
- 2007 Monitoring Results for the Capping of Site CA-SDI-6038/SDM-W-5517 within the Katzer Jamul Center Project; P00-017.
- 2006 Archaeological Assessment for The Johnson Project (APN 322-011-10), Poway, California.
- 2005 Results of Archaeological Monitoring at the El Camino Del Teatro Accelerated Sewer Replacement Project (Bid No. K041364; WO # 177741; CIP # 46-610.6.
- 2005 Results of Archaeological Monitoring at the Baltazar Draper Avenue Project (Project No. 15857; APN: 351-040-09).
- 2004 TM 5325 ER #03-14-043 Cultural Resources.
- 2004 An Archaeological Survey and an Evaluation of Cultural Resources at the Salt Creek Project. Report on file at Brian F. Smith and Associates.
- 2003 An Archaeological Assessment for the Hidden Meadows Project, San Diego County, TM 5174, Log No. 99-08-033. Report on file at Brian F. Smith and Associates.
- 2003 An Archaeological Survey for the Manchester Estates Project, Coastal Development Permit #02-009, Encinitas, California. Report on file at Brian F. Smith and Associates.
- 2003 Archaeological Investigations at the Manchester Estates Project, Coastal Development Permit #02-009, Encinitas, California. Report on file at Brian F. Smith and Associates.
- 2003 Archaeological Monitoring of Geological Testing Cores at the Pacific Beach Christian Church Project. Report on file at Brian F. Smith and Associates.

- 2003 San Juan Creek Drilling Archaeological Monitoring. Report on file at Brian F. Smith and Associates.
- 2003 Evaluation of Archaeological Resources Within the Spring Canyon Biological Mitigation Area, Otay Mesa, San Diego County, California. Brian F. Smith and Associates, San Diego, California.
- 2002 An Archaeological/Historical Study for the Otay Ranch Village 13 Project (et al.). Brian F. Smith and Associates, San Diego, California.
- 2002 An Archaeological/Historical Study for the Audie Murphy Ranch Project (et al.). Brian F. Smith and Associates, San Diego, California.
- 2002 Results of an Archaeological Survey for the Remote Video Surveillance Project, El Centro Sector, Imperial County, California. Brian F. Smith and Associates, San Diego, California.
- 2002 A Cultural Resources Survey and Evaluation for the Proposed Robertson Ranch Project, City of Carlsbad. Brian F. Smith and Associates, San Diego, California.
- 2002 Archaeological Mitigation of Impacts to Prehistoric Site SDI-7976 for the Eastlake III Woods Project, Chula Vista, California. Brian F. Smith and Associates, San Diego, California.
- 2002 An Archaeological/Historical Study for Tract No. 29777, Meniffee West GPA Project, Perris Valley, Riverside County. Brian F. Smith and Associates, San Diego, California.
- 2002 An Archaeological/Historical Study for Tract No. 29835, Meniffee West GPA Project, Perris Valley, Riverside County. Brian F. Smith and Associates, San Diego, California.
- 2001 An Archaeological Survey and Evaluation of a Cultural Resource for the Moore Property, Poway. Brian F. Smith and Associates, San Diego, California.
- 2001 An Archaeological Report for the Mitigation, Monitoring, and Reporting Program at the Water and Sewer Group Job 530A, Old Town San Diego. Brian F. Smith and Associates, San Diego, California.
- 2001 A Cultural Resources Impact Survey for the High Desert Water District Recharge Site 6 Project, Yucca Valley. Brian F. Smith and Associates, San Diego, California.
- 2001 Archaeological Mitigation of Impacts to Prehistoric Site SDI-13,864 at the Otay Ranch SPA-One West Project. Brian F. Smith and Associates, San Diego, California.
- 2001 A Cultural Resources Survey and Site Evaluations at the Stewart Subdivision Project, Moreno Valley, County of San Diego. Brian F. Smith and Associates, San Diego, California.
- 2000 An Archaeological/Historical Study for the French Valley Specific Plan/EIR, French Valley, County of Riverside. Brian F. Smith and Associates, San Diego, California.
- 2000 Results of an Archaeological Survey and the Evaluation of Cultural Resources at The TPM#24003–Lawson Valley Project. Brian F. Smith and Associates, San Diego, California.
- 2000 Archaeological Mitigation of Impacts to Prehistoric Site SDI-5326 at the Westview High School Project for the Poway Unified School District. Brian F. Smith and Associates, San Diego, California.
- 2000 An Archaeological/Historical Study for the Meniffee Ranch Project. Brian F. Smith and Associates, San Diego, California.
- 2000 An Archaeological Survey and Evaluation of Cultural Resources for the Bernardo Mountain Project, Escondido, California. Brian F. Smith and Associates, San Diego, California.

- 2000 A Cultural Resources Impact Survey for the Nextel Black Mountain Road Project, San Diego, California. Brian F. Smith and Associates, San Diego, California.
- 2000 A Cultural Resources Impact Survey for the Rancho Vista Project, 740 Hilltop Drive, Chula Vista, California. Brian F. Smith and Associates, San Diego, California.
- 2000 A Cultural Resources Impact Survey for the Poway Creek Project, Poway, California. Brian F. Smith and Associates, San Diego, California.
- 2000 Cultural Resource Survey and Geotechnical Monitoring for the Mohyi Residence Project. Brian F. Smith and Associates, San Diego, California.
- 2000 Enhanced Cultural Resource Survey and Evaluation for the Prewitt/Schmucker/Cavadias Project. Brian F. Smith and Associates, San Diego, California.
- 2000 Enhanced Cultural Resource Survey and Evaluation for the Lamont 5 Project. Brian F. Smith and Associates, San Diego, California.
- 2000 Salvage Excavations at Site SDM-W-95 (CA-SDI-211) for the Poinsettia Shores Santalina Development Project, Carlsbad, California. Brian F. Smith and Associates, San Diego, California.
- 2000 Enhanced Cultural Resource Survey and Evaluation for the Reiss Residence Project, La Jolla, California. Brian F. Smith and Associates, San Diego, California.
- 2000 Enhanced Cultural Resource Survey and Evaluation for the Tyrian 3 Project, La Jolla, California. Brian F. Smith and Associates, San Diego, California.
- 2000 A Report for an Archaeological Evaluation of Cultural Resources at the Otay Ranch Village Two SPA, Chula Vista, California. Brian F. Smith and Associates, San Diego, California.
- 2000 An Archaeological Evaluation of Cultural Resources for the Airway Truck Parking Project, Otay Mesa, County of San Diego. Brian F. Smith and Associates, San Diego, California.
- 2000 Results of an Archaeological Survey and Evaluation of a Resource for the Tin Can Hill Segment of the Immigration and Naturalization and Immigration Service Border Road, Fence, and Lighting Project, San Diego County, California. Brian F. Smith and Associates, San Diego, California.
- 1999 An Archaeological Survey of the Home Creek Village Project, 4600 Block of Home Avenue, San Diego, California. Brian F. Smith and Associates, San Diego, California.
- 1999 An Archaeological Survey for the Sgobassi Lot Split, San Diego County, California. Brian F. Smith and Associates, San Diego, California.
- 1999 An Evaluation of Cultural Resources at the Otay Ranch Village 11 Project. Brian F. Smith and Associates, San Diego, California.
- 1999 An Archaeological/Historical Survey and Evaluation of a Cultural Resource for The Osterkamp Development Project, Valley Center, California. Brian F. Smith and Associates, San Diego, California.
- 1999 An Archaeological Survey and Evaluation of Cultural Resources for the Palomar Christian Conference Center Project, Palomar Mountain, California. Brian F. Smith and Associates, San Diego, California.
- 1999 An Archaeological Survey and Evaluation of a Cultural Resource for the Proposed College Boulevard Alignment Project. Brian F. Smith and Associates, San Diego, California.

- 1999 Results of an Archaeological Evaluation for the Anthony's Pizza Acquisition Project in Ocean Beach, City of San Diego (with L. Pierson and B. Smith). Brian F. Smith and Associates, San Diego, California.
- 1996 An Archaeological Testing Program for the Scripps Poway Parkway East Project. Brian F. Smith and Associates, San Diego, California.
- 1995 Results of a Cultural Resources Study for the 4S Ranch. Brian F. Smith and Associates, San Diego, California.
- 1995 Results of an Archaeological Evaluation of Cultural Resources Within the Proposed Corridor for the San Elijo Water Reclamation System. Brian F. Smith and Associates, San Diego, California.
- 1994 Results of the Cultural Resources Mitigation Programs at Sites SDI-11,044/H and SDI-12,038 at the Salt Creek Ranch Project. Brian F. Smith and Associates, San Diego, California.
- 1993 Results of an Archaeological Survey and Evaluation of Cultural Resources at the Stallion Oaks Ranch Project. Brian F. Smith and Associates, San Diego, California.
- 1992 Results of an Archaeological Survey and the Evaluation of Cultural Resources at the Ely Lot Split Project. Brian F. Smith and Associates, San Diego, California.
- 1991 The Results of an Archaeological Study for the Walton Development Group Project. Brian F. Smith and Associates, San Diego, California.

Andrew J. Garrison, M.A., RPA

Senior Project Archaeologist

Brian F. Smith and Associates, Inc.

14010 Poway Road • Suite A •

Phone: (858) 679-8218 • Fax: (858) 679-9896 • E-Mail: agarrison@bfsa-ca.com



Education

Master of Arts, Public History, University of California, Riverside	2009
Bachelor of Science, Anthropology, University of California, Riverside	2005
Bachelor of Arts, History, University of California, Riverside	2005

Professional Memberships

Register of Professional Archaeologists
Society for California Archaeology
Society for American Archaeology
California Council for the Promotion of History

Society of Primitive Technology
Lithic Studies Society
California Preservation Foundation
Pacific Coast Archaeological Society

Experience

Senior Project Archaeologist Brian F. Smith and Associates, Inc.

**June 2017–Present
Poway, California**

Project management of all phases of archaeological investigations for local, state, and federal agencies including National Register of Historic Places (NRHP) and California Environmental Quality Act (CEQA) level projects interacting with clients, sub-consultants, and lead agencies. Supervise and perform fieldwork including archaeological survey, monitoring, site testing, comprehensive site records checks, and historic building assessments. Perform and oversee technological analysis of prehistoric lithic assemblages. Author or co-author cultural resource management reports submitted to private clients and lead agencies.

Senior Archaeologist and GIS Specialist Scientific Resource Surveys, Inc.

**2009–2017
Orange, California**

Served as Project Archaeologist or Principal Investigator on multiple projects, including archaeological monitoring, cultural resource surveys, test excavations, and historic building assessments. Directed projects from start to finish, including budget and personnel hours proposals, field and laboratory direction, report writing, technical editing, Native American consultation, and final report submittal. Oversaw all GIS projects including data collection, spatial analysis, and map creation.

Preservation Researcher City of Riverside Modernism Survey

**2009
Riverside, California**

Completed DPR Primary, District, and Building, Structure and Object Forms for five sites for a grant-funded project to survey designated modern architectural resources within the City of Riverside.

Information Officer
Eastern Information Center (EIC), University of California, Riverside

2005, 2008–2009
Riverside, California

Processed and catalogued restricted and unrestricted archaeological and historical site record forms. Conducted research projects and records searches for government agencies and private cultural resource firms.

Reports/Papers

- 2019 Cultural Resource Monitoring Report for the Pipeline Rehabilitation AP-1 Project, City of San Diego, California. Brian F. Smith and Associates, Inc.
- 2019 Cultural Resources Study for the Pioneer Redlands Project, San Bernardino County, California. Brian F. Smith and Associates, Inc.
- 2019 Cultural Resource Report for the U.S. Allied Carriers Project, City of Riverside, Riverside County, California. Brian F. Smith and Associates, Inc.
- 2019 Phase I Cultural Resources Survey for the Go Fresh Gas Station Project, City of Moreno Valley, Riverside County, California. Brian F. Smith and Associates, Inc.
- 2019 A Negative Cultural Resources Survey Report for the Barnaba Soccer Fields and Event Space Project, San Diego County, California.
- 2019 Phase I Cultural Resource Survey for the 2608 South Escondido Boulevard Project, City of Escondido. Brian F. Smith and Associates, Inc.
- 2019 A Negative Cultural Resources Survey Report for the Quail Ridge Project, San Diego County, California. Brian F. Smith and Associates, Inc.
- 2019 A Phase I Cultural Resource Study for the Eastvale Self Storage Project, Eastvale, California. Brian F. Smith and Associates, Inc.
- 2019 A Class III Archaeological Study for the Tuscany Valley (TM 33725) Project National Historic Preservation Act Section 106 Compliance, Lake Elsinore, Riverside County, California. Contributing author. Brian F. Smith and Associates, Inc.
- 2019 A Phase I Cultural Resources Assessment for the Dudley Pomona Project, Pomona, California. Brian F. Smith and Associates, Inc.
- 2019 A Phase I and II Cultural Resources Assessment for the Jack Rabbit Trail Logistics Center Project, City of Beaumont, Riverside County, California. Brian F. Smith and Associates, Inc.
- 2019 A Phase I Cultural Resources Assessment for the 10575 Foothill Boulevard Project, Rancho Cucamonga, California. Brian F. Smith and Associates, Inc.
- 2019 A Phase I Cultural Resources Survey for the IDI Rider 2 & 4 High Cube Warehouses and PVSD Channel Improvement Project, Perris, California. Brian F. Smith and Associates, Inc.
- 2019 Cultural Resources Study for the County Road and East End Avenue Project, City of Chino, San Bernardino County, California. Brian F. Smith and Associates, Inc.

- 2019 A Phase I Cultural Resources Survey for the IPT Perris DC III Western/Nandina Project, Perris, California. Brian F. Smith and Associates, Inc.
- 2019 Phase II Cultural Resource Study for the McElwain Project, City of Murrieta, California. Contributing author. Brian F. Smith and Associates, Inc.
- 2019 A Section 106 (NHPA) Historic Resources Study for the McElwain Project, City of Murrieta, Riverside County, California. Brian F. Smith and Associates, Inc.
- 2019 A Phase I Cultural Resources Survey Report for the Commercial/Retail NWC Mountain and Lake Streets Project, City of Lake Elsinore, Riverside County, California. Brian F. Smith and Associates, Inc.
- 2019 A Section 106 (NHPA) Historic Resources Study for the Twin Channel Project, City of San Bernardino, San Bernardino County, California. Brian F. Smith and Associates, Inc.
- 2019 Cultural Resources Study for the 10407 Elm Avenue Project, City of Fontana, San Bernardino County, California. Brian F. Smith and Associates, Inc.
- 2019 A Phase I Cultural Resource Study for the Olivenhain Apartments Project, Encinitas, California. Brian F. Smith and Associates, Inc.
- 2019 A Phase I Cultural Resource Study for the Sanctuary Project, Encinitas, California. Brian F. Smith and Associates, Inc.
- 2019 A Cultural Resources Survey Report for the Borrego Springs 141 Project, San Diego County, California. Brian F. Smith and Associates, Inc.
- 2019 A Phase I Cultural Resources Survey for the Natwar Project, Perris, California. Brian F. Smith and Associates, Inc.
- 2019 A Phase I Cultural Resources Survey for the Morningstar Marguerite Project, Mission Viejo, California. Brian F. Smith and Associates, Inc.
- 2019 A Phase I Cultural Resources Assessment for the Anza Baptist Church Project, Riverside County. Brian F. Smith and Associates, Inc.
- 2019 A Phase I Cultural Resources Assessment for the Inland Propane Project, Riverside County, California. Brian F. Smith and Associates, Inc.
- 2019 A Phase I Cultural Resources Survey for the First Industrial Wilson Avenue Project, Perris, California. Brian F. Smith and Associates, Inc.
- 2018 A Class III Historic Resource Study for Phase 2 of the Atwell Project for Section 106 Compliance, Banning, California. Brian F. Smith and Associates, Inc.
- 2018 Cultural Resource Monitoring Report for the Sewer Group 818 Project, City of San Diego. Brian F. Smith and Associates, Inc.
- 2018 Phase I Cultural Resource Survey for the Stone Residence Project, 1525 Buckingham Drive, La Jolla, California 92037. Brian F. Smith and Associates, Inc.
- 2018 A Phase I Cultural Resources Assessment for the Hanna Banning Project, Banning, California. Brian F. Smith and Associates, Inc.

- 2018 Cultural Resources Negative Findings for the SNC Mixed Use Project, San Diego County, California. Brian F. Smith and Associates, Inc.
- 2018 Cultural Resources Study for the Perrin Oak Ranch Winery Project, San Diego County, California. Brian F. Smith and Associates, Inc.
- 2018 Phase I Cultural Resource Survey for the Stemley 42nd Street Project, San Diego, California. Brian F. Smith and Associates, Inc.
- 2018 Cultural Resource Monitoring Report for the 320 West Cedar Street Project, San Diego, California. Brian F. Smith and Associates, Inc.
- 2018 Cultural Resource Monitoring Report for the 8352 La Jolla Shores Drive Project, San Diego, California. Brian F. Smith and Associates, Inc.
- 2018 Phase I Cultural Resources Survey of APNs 316-210-032 and -033, City of Moreno Valley, County of Riverside. Contributing author. Brian F. Smith and Associates, Inc.
- 2018 A Cultural Resources Assessment for TR 37177, City of Riverside, Riverside County, California. Brian F. Smith and Associates, Inc.
- 2018 A Phase I Cultural Resources Assessment for the Seaton Commerce Center Project, Riverside County, California. Brian F. Smith and Associates, Inc.
- 2017 A Phase I Cultural Resources Assessment for the Marbella Villa Project, City of Desert Hot Springs, Riverside County, California. Brian F. Smith and Associates, Inc.
- 2017 Phase I Cultural Resources Survey for TTM 37109, City of Jurupa Valley, County of Riverside. Brian F. Smith and Associates, Inc.
- 2017 A Phase I Cultural Resources Survey for the Jefferson & Ivy Project, City of Murrieta, California. Brian F. Smith and Associates, Inc.
- 2017 A Phase I Cultural Resources Assessment for the Nuevo Dollar General Store Project, Riverside County, California. Brian F. Smith and Associates, Inc.
- 2017 A Phase I Cultural Resource Study for the Westmont Project, Encinitas, California. Brian F. Smith and Associates, Inc.
- 2017 A Phase I Cultural Resources Assessment for the Winchester Dollar General Store Project, Riverside County, California. Brian F. Smith and Associates, Inc.
- 2017 Phase I Cultural Resource Assessment for TTM 31810 (42.42 acres) Predico Properties Olive Grove Project. Scientific Resource Surveys, Inc.
- 2016 John Wayne Airport Jet Fuel Pipeline and Tank Farm Archaeological Monitoring Plan. Scientific Resource Surveys, Inc. On file at the County of Orange, California.
- 2016 Phase I Cultural Resources Assessment: All Star Super Storage City of Menifee Project, 2015-156. Scientific Resource Surveys, Inc. On file at the Eastern Information Center, University of California, Riverside.
- 2016 Historic Resource Assessment for 220 South Batavia Street, Orange, CA 92868 Assessor's Parcel Number 041-064-4. Scientific Resource Surveys, Inc. Submitted to the City of Orange as part of

Mills Act application.

- 2015 Historic Resource Report: 807-813 Harvard Boulevard, Los Angeles. Scientific Resource Surveys, Inc. On file at the South Central Coastal Information Center, California State University, Fullerton.
- 2015 Exploring a Traditional Rock Cairn: Test Excavation at CA-SDI-13/RBLI-26: The Rincon Indian Reservation, San Diego County, California. Scientific Resource Surveys, Inc.
- 2015 Class III Scientific Resource Surveys, Inc. Survey for The Lynx Cat Granite Quarry and Water Valley Road Widening Project County of San Bernardino, California, Near the Community of Hinkley. Scientific Resource Surveys, Inc. On file at the South Central Coastal Information Center, California State University, Fullerton.
- 2014 Archaeological Phase I: Cultural Resource Survey of the South West Quadrant of Fairview Park, Costa Mesa. Scientific Resource Surveys, Inc. On file at the South Central Coastal Information Center, California State University, Fullerton.
- 2014 Archaeological Monitoring Results: The New Los Angeles Federal Courthouse. Scientific Resource Surveys, Inc. On file at the South Central Coastal Information Center, California State University, Fullerton.
- 2012 Bolsa Chica Archaeological Project Volume 7, Technological Analysis of Stone Tools, Lithic Technology at Bolsa Chica: Reduction Maintenance and Experimentation. Scientific Resource Surveys, Inc.
- 2010 Phase II Cultural Resources Report Site CA-RIV-2160 PM No. 35164. Scientific Resource Surveys, Inc. On file at the Eastern Information Center, University of California, Riverside.
- 2009 Riverside Modernism Context Survey, contributing author. Available online at the City of Riverside.

Presentations

- 2017 "Repair and Replace: Lithic Production Behavior as Indicated by the Debitage Assemblage from CA-MRP-283 the Hackney Site." Presented at the Society for California Archaeology Annual Meeting, Fish Camp, California.
- 2016 "Bones, Stones, and Shell at Bolsa Chica: A Ceremonial Relationship?" Presented at the Society for California Archaeology Annual Meeting, Ontario, California.
- 2016 "Markers of Time: Exploring Transitions in the Bolsa Chica Assemblage." Presented at the Society for California Archaeology Annual Meeting, Ontario, California.
- 2016 "Dating Duress: Understanding Prehistoric Climate Change at Bolsa Chica." Presented at the Society for California Archaeology Annual Meeting, Ontario, California.
- 2015 "Successive Cultural Phasing Of Prehistoric Northern Orange County, California." Presented at the Society for California Archaeology Annual Meeting, Redding, California.
- 2015 "Southern California Cogged Stone Replication: Experimentation and Results." Presented at the Society for California Archaeology Annual Meeting, Redding, California.

- 2015 "Prehistoric House Keeping: Lithic Analysis of an Intermediate Horizon House Pit." Presented at the Society for California Archaeology Annual Meeting, Redding, California.
- 2015 "Pits and Privies: The Use and Disposal of Artifacts from Historic Los Angeles." Presented at the Society for California Archaeology Annual Meeting, Redding, California.
- 2015 "Grooving in the Past: A Demonstration of the Manufacturing of OGR beads and a look at Past SRS, Inc. Replicative Studies." Demonstration of experimental manufacturing techniques at the January meeting of The Pacific Coast Archaeological Society, Irvine, California.
- 2014 "From Artifact to Replication: Examining *Olivella* Grooved Bead Manufacturing." Presented at the Society for California Archaeology Annual Meeting, Visalia, California.
- 2014 "New Discoveries from an Old Collection: Comparing Recently Identified OGR Beads to Those Previously Analyzed from the Encino Village Site." Presented at the Society for California Archaeology Annual Meeting, Visalia, California.
- 2012 Bolsa Chica Archaeology: Part Seven: Culture and Chronology. Lithic demonstration of experimental manufacturing techniques at the April meeting of The Pacific Coast Archaeological Society, Irvine, California.
- 2012 "Expedient Flaked Tools from Bolsa Chica: Exploring the Lithic Technological Organization." Presented at the Society for California Archaeology Annual Meeting, San Diego, California.
- 2012 "Utilitarian and Ceremonial Ground Stone Production at Bolsa Chica Identified Through Production Tools." Presented at the Society for California Archaeology Annual Meeting, San Diego, California.
- 2012 "Connecting Production Industries at Bolsa Chica: Lithic Reduction and Bead Manufacturing." Presented at the Society for California Archaeology Annual Meeting, San Diego, California.
- 2011 Bolsa Chica Archaeology: Part Four: Mesa Production Industries. Co-presenter at the April meeting of The Pacific Coast Archaeological Society, Irvine, California.
- 2011 "Hammerstones from Bolsa Chica and Their Relationship towards Site Interpretation." Presented at the Society for California Archaeology Annual Meeting, Rohnert Park, California.
- 2011 "Exploring Bipolar Reduction at Bolsa Chica: Debitage Analysis and Replication." Presented at the Society for California Archaeology Annual Meeting, Rohnert Park, California.

APPENDIX B

Site Record Form

(Deleted for Public Review; Bound Separately)

APPENDIX C

**PVCC Specific Plan FEIR
Applicable Mitigation Measures**

Biological Resources							
Impact/Threshold	Mitigation Measure	Monitoring Timing/ Frequency	Action Indicating Compliance	Monitoring Agency	Verification of Compliance		
					Initials	Date	Remarks
	at least 90 percent avoidance of areas providing long-term conservation value for the NEPSSA and CAPSSA target species. If avoidance is not feasible, then such implementing projects will require the approval of a DBESP including appropriate mitigation.	conjunction with development applications as part of the CEQA process Approval of a DBESP will be required as part of the CEQA process	Planning Division				

Cultural Resources							
Impact/Threshold	Mitigation Measure	Monitoring Timing/ Frequency	Action Indicating Compliance	Monitoring Agency	Verification of Compliance		
					Initials	Date	Remarks
The project would cause a substantial adverse change in the significance of a historical resource as defined in Section 15064.5 of the <i>CEQA Guidelines</i> .	MM Cultural 1: Prior to the consideration by the City of Perris of implementing development or infrastructure projects for properties that are vacant, undeveloped, or considered to be sensitive for cultural resources by the City of Perris Planning Division, a Phase I Cultural Resources Study of the subject property prepared in accordance	In conjunction with development applications, and prior to issuance of grading permits	Submittal of a Phase I Cultural Resources Study and issuance of grading permits	City of Perris Planning Division			

Cultural Resources							
Impact/Threshold	Mitigation Measure	Monitoring Timing/Frequency	Action Indicating Compliance	Monitoring Agency	Verification of Compliance		
					Initials	Date	Remarks
	<p>with the protocol of the City of Perris by a professional archeologist¹ shall be submitted to the City of Perris Planning Division for review and approval. The Phase I Cultural Resources Study shall determine whether the subject implementing development would potentially cause a substantial adverse change to any significant paleontological, archaeological, or historic resources. The Phase I Cultural Resources Study shall be prepared to meet the standards established by Riverside County and shall, at a minimum, include the results of the following:</p> <ol style="list-style-type: none"> 1. Records searches at the Eastern Information Center (EIC), the National or State Registry of Historic Places and any appropriate public, private, and tribal archives. 2. Sacred Lands File record search with the NAHC followed by project scoping with tribes recommended by the NAHC. 3. Field survey of the implementing 						

¹ For the purpose of this measure, the City of Perris considers professional archaeologists to be those who meet the United States Secretary of the Interior's standards for recognition as a professional, including an advanced degree in anthropology, archaeology, or a related field, and the local experience necessary to evaluate the specific project. The professional archaeologist must also meet the minimum criteria for recognition by the Register for Professional Archaeologists (RPA), although membership is not required.

Cultural Resources							
Impact/Threshold	Mitigation Measure	Monitoring Timing/ Frequency	Action Indicating Compliance	Monitoring Agency	Verification of Compliance		
					Initials	Date	Remarks
	<p>development or infrastructure project site.</p> <p>The proponents of the subject implementing development projects and the professional archaeologists are also encouraged to contact the local Native American tribes (as identified by the California Native Heritage Commission and the City of Perris) to obtain input regarding the potential for native American resources to occur at the project site.</p> <p>Measures shall be identified to mitigate the known and potential significant effects of the implementing development or infrastructure project, if any. Mitigation for historic resources shall be considered in the following order of preference:</p> <ol style="list-style-type: none"> 1. Avoidance. 2. Changes to the structure provided pursuant to the Secretary of Interior's Standards. 3. Relocation of the structure. 4. Recordation of the structure to Historic American Buildings Survey (HABS)/Historic American Engineering Record (HAER) standard if demolition is allowed. 						

Cultural Resources							
Impact/Threshold	Mitigation Measure	Monitoring Timing/ Frequency	Action Indicating Compliance	Monitoring Agency	Verification of Compliance		
					Initials	Date	Remarks
	<p>Avoidance is the preferred treatment for known significant prehistoric and historical archaeological sites, and sites containing Native American human remains. Where feasible, plans for implementing projects shall be developed to avoid known significant archaeological resources and sites containing human remains. Where avoidance of construction impacts is possible, the implementing projects shall be designed and landscaped in a manner, which will ensure that indirect impacts from increased public availability to these sites are avoided. Where avoidance is selected, archaeological resource sites and sites containing Native American human remains shall be placed within permanent conservation easements or dedicated open space areas.</p> <p>The Phase I Cultural Resources Study submitted for each implementing development or infrastructure project shall have been completed no more than three (3) years prior to the submittal of the application for the subject implementing development project or the start of construction of an implementing infrastructure project.</p>						

Cultural Resources							
Impact/Threshold	Mitigation Measure	Monitoring Timing/Frequency	Action Indicating Compliance	Monitoring Agency	Verification of Compliance		
					Initials	Date	Remarks
	<p>MM Cultural 2: If the Phase I Cultural Resources Study required under MM Cultural 1 determines that monitoring during construction by a professional archaeologist is needed for the implementing development project; the project proponent shall retain a professional archaeologist prior to the issuance of grading permits. The task of the archaeologist shall be to verify implementation of the mitigation measures identified in the approved Phase I Cultural Resources Study and to monitor the initial ground-altering activities² at the subject site for the unearthing of previously unknown archaeological and/or cultural resources. Selection of the archaeologist shall be subject to the approval of the City of Perris Planning Manager and no grading activities shall occur at the site until the archaeologist has been approved by the City.</p> <p>The archaeological monitor shall be responsible for maintaining daily field notes, a photographic record, and reporting all finds in a timely manner. The archaeologist shall also be</p>	In conjunction with development applications, and prior to issuance of grading permits	Retention of professional archaeologist/ongoing monitoring/submittal of Report of Findings, if applicable	City of Perris Planning Division			
	equipped to record and salvage cultural resources that may be unearthed during initial ground-altering activities. The archaeologist						11.0-24

Cultural Resources							
Impact/Threshold	Mitigation Measure	Monitoring Timing/Frequency	Action Indicating Compliance	Monitoring Agency	Verification of Compliance		
					Initials	Date	Remarks
	MM Cultural 3 If the Phase I Cultural Resources Study required under MM Cultural 1 determines that monitoring during construction by both a professional archaeologist and a Native American representative is needed for the implementing development project, the project proponent shall retain a professional archaeologist and a Native American representative of Luiseño descent prior to the issuance of grading permits. The professional archaeologist and Native American observer shall be required on site during all initial ground-altering activities. The Native American observer shall have the authority to temporarily divert, redirect, or halt the ground disturbance activities to allow the evaluation of cultural resources with the project archaeologist. The evaluation and treatment provisions of mitigation measure MM Cultural 2 shall apply to this measure.	Monitors retained prior to issuance of grading permits. Monitoring shall take place during all initial ground-altering activities	Retention of professional archaeologist/ongoing monitoring/submittal of Report of Findings, if applicable	City of Perris Planning Division			
	MM Cultural 4 In the event that cultural resources are discovered at a development site that is not monitored by a professional	Ongoing during construction	Retention of professional archaeologist/ongoing monitoring/submittal of	City of Perris Planning			

² For the purpose of this measure, ground-altering activities include, but are not limited to, debris removal, vegetation removal, tree removal, grading, trenching, or other site preparation activities. Initial ground-altering activities refer to the first time that the existing materials are altered by construction-related activities. Materials that have already been disturbed by construction-related activities do not require subsequent monitoring.

Cultural Resources							
Impact/Threshold	Mitigation Measure	Monitoring Timing/Frequency	Action Indicating Compliance	Monitoring Agency	Verification of Compliance		
					Initials	Date	Remarks
	archaeologist, all activities in the immediate vicinity of the find shall stop, the project developer shall notify the City of Perris Planning Division, and the project developer shall retain a professional archaeologist to analyze the find for identification as prehistoric and historical archaeological resources. The evaluation and treatment provisions of mitigation measure MM Cultural 2 shall apply to this measure.		Report of Findings, if applicable	Division			
The project would directly or indirectly destroy a unique paleontological resource or site or unique geologic feature.	<p>MM Cultural 5: Prior to grading for projects requiring subsurface excavation that exceeds five (5) feet in depth, proponents of the subject implementing development projects shall retain a professional paleontologist to verify implementation of the mitigation measures identified in the approved Phase I Cultural Resources Study and to monitor the subsurface excavation that exceed five (5) feet in depth. Selection of the paleontologist shall be subject to the approval of the City of Perris Planning Manager and no grading activities shall occur at the site until the paleontologist has been approved by the City.</p> <p>Monitoring should be restricted to undisturbed subsurface areas of older alluvium, which might be present below the surface. The</p>	<p>Prior to issuance of grading permits</p> <p>Ongoing monitoring during subsurface excavation</p>	Retention of professional paleontologist/ongoing monitoring/submittal of Report of Findings, if applicable	City of Perris Planning Division			

Cultural Resources							
Impact/Threshold	Mitigation Measure	Monitoring Timing/Frequency	Action Indicating Compliance	Monitoring Agency	Verification of Compliance		
					Initials	Date	Remarks
	<p>paleontologist shall be prepared to quickly salvage fossils as they are unearthed to avoid construction delays. The paleontologist shall also remove samples of sediments which are likely to contain the remains of small fossil invertebrates and vertebrates. The paleontologist shall have the power to temporarily halt or divert grading equipment to allow for removal of abundant or large specimens.</p> <p>Collected samples of sediments shall be washed to recover small invertebrate and vertebrate fossils. Recovered specimens shall be prepared so that they can be identified and permanently preserved. Specimens shall be identified and curated and placed into an accredited repository (such as the Western Science Center or the Riverside Metropolitan Museum) with permanent curation and retrievable storage.</p> <p>A report of findings, including an itemized inventory of recovered specimens, shall be prepared upon completion of the steps outlined above. The report shall include a discussion of the significance of all recovered specimens. The report and inventory, when submitted to the City of Perris Planning Division, will signify completion of the program to mitigate impacts</p>						

Cultural Resources							
Impact/Threshold	Mitigation Measure	Monitoring Timing/Frequency	Action Indicating Compliance	Monitoring Agency	Verification of Compliance		
					Initials	Date	Remarks
	to paleontological resources.						
The project would cause a substantial adverse change in the significance of a historical resource as defined in Section 15064.5 of the <i>CEQA Guidelines</i> .	<p>MM Cultural 6: In the event that human remains (or remains that may be human) are discovered at the implementing development project site during grading or earthmoving, the construction contractors shall immediately stop all activities in the immediate area of the find. The project proponent shall then inform the Riverside County Coroner and the City of Perris Planning Division and the coroner will be permitted to examine the remains.</p> <p>If the coroner determines that the remains are of Native American origin, the coroner will notify the NAHC and the Commission will identify the “Most Likely Descendent” (MLD).³ Despite the affiliation of any Native American representatives at the site, the Commission’s identification of the MLD will stand. The MLD shall be granted access to inspect the site of the discovery of the Native</p>	During construction activities	Coroner and NAHC contacted and submittal of Report of Findings, if applicable	City of Perris Planning Division			

³ The “Most Likely Descendent” (“MLD”) is a reference used by the California Native American Heritage Commission to identify the individual or population most likely associated with any human remains that may be identified within a given project area. Under California Public Resources Code section 5097.98, the Native American Heritage Commission has the authority to name the MLD for any specific project and this identification is based on a report of Native American remains through the County Coroner’s office. In the case of the City of Perris, the Native American Heritage Commission may identify any Luiseño descendent, but generally names the Soboba or Pechanga bands of Mission Indians (both Luiseño populations) and alternates between the two groups. The City of Perris will recognize any MLD identified by the Native American Heritage Commission without giving preference to any particular population. In cases where the Native American Heritage Commission is not tasked with the identification of a Native American representative, the City of Perris reserves the right to make an independent decision based upon the nature of the proposed project.

Cultural Resources							
Impact/Threshold	Mitigation Measure	Monitoring Timing/ Frequency	Action Indicating Compliance	Monitoring Agency	Verification of Compliance		
					Initials	Date	Remarks
	<p>American human remains and may recommend to the project proponent means for treatment or disposition, with appropriate dignity of the human remains and any associated grave goods. The MLD shall complete their inspection and make recommendations or preferences for treatment within 48 hours of being granted access to the site. The disposition of the remains will be determined in consultation with the City of Perris, the project proponent, and the MLD. The City of Perris will be responsible for the final decision, based upon input from the various stakeholders.</p> <p>If the human remains are determined to be other than Native American in origin, but still of archaeological value, the remains will be recovered for analysis and subject to curation or reburial at the expense of the project proponent. If deemed appropriate, the remains will be recovered by the coroner and handled through the Coroner's Office.</p> <p>Coordination with the Coroner's Office will be through the City of Perris and in consultation with the various stakeholders.</p> <p>The specific locations of Native American burials and reburials will be proprietary and not</p>						

Cultural Resources							
Impact/Threshold	Mitigation Measure	Monitoring Timing/Frequency	Action Indicating Compliance	Monitoring Agency	Verification of Compliance		
					Initials	Date	Remarks
	disclosed to the general public. The locations will be documented by the consulting archaeologist in conjunction with the various stakeholders and a report of findings shall be filed with the Eastern Information Center (EIC).						

Geology and Soils							
Impact/Threshold	Mitigation Measure	Monitoring Timing/Frequency	Action Indicating Compliance	Monitoring Agency	Verification of Compliance		
					Initials	Date	Remarks
Expose people or property to substantial adverse effects, including the risk of loss, injury, or death involving seismic-related ground failure, including liquefaction. Be located on a geologic unit or soil that is unstable, or that would become unstable as a result of the proposed project, and potentially result in on- or off-site landslide, lateral spreading, subsidence,	MM Geo 1: Concurrent with the City of Perris' review of implementing development projects, the project proponent of the implementing development project shall submit a geotechnical report prepared by a registered geotechnical engineer and a qualified engineering geologist to the City of Perris Public Works/Engineering Administration Division for its review and approval. The geotechnical report shall assess the soil stability within the implementing development project affecting individual lots and building pads, and shall describe the methodology (e.g., overexcavated, backfilled, compaction) being used to implement the	In conjunction with development applications, and prior to issuance of grading permits	Submittal of geotechnical report	City of Perris Public Works/Engineering Division			

APPENDIX D

Archaeological Records Search Results

(Deleted for Public Review; Bound Separately)

APPENDIX E

NAHC Sacred Lands File Search Results

(Deleted for Public Review; Bound Separately)

APPENDIX F

Confidential Map

(Deleted for Public Review; Bound Separately)