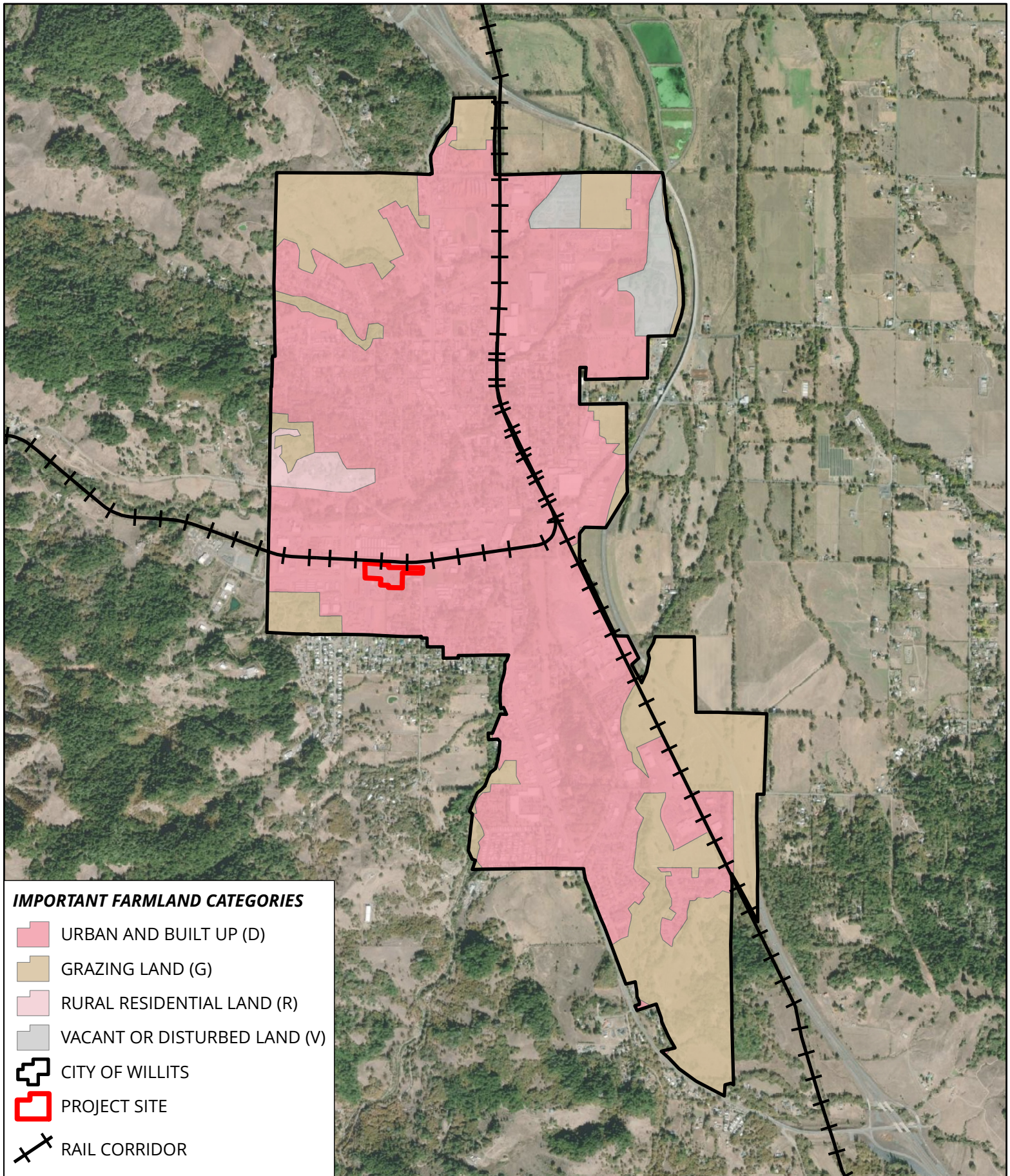


FIGURE A-1

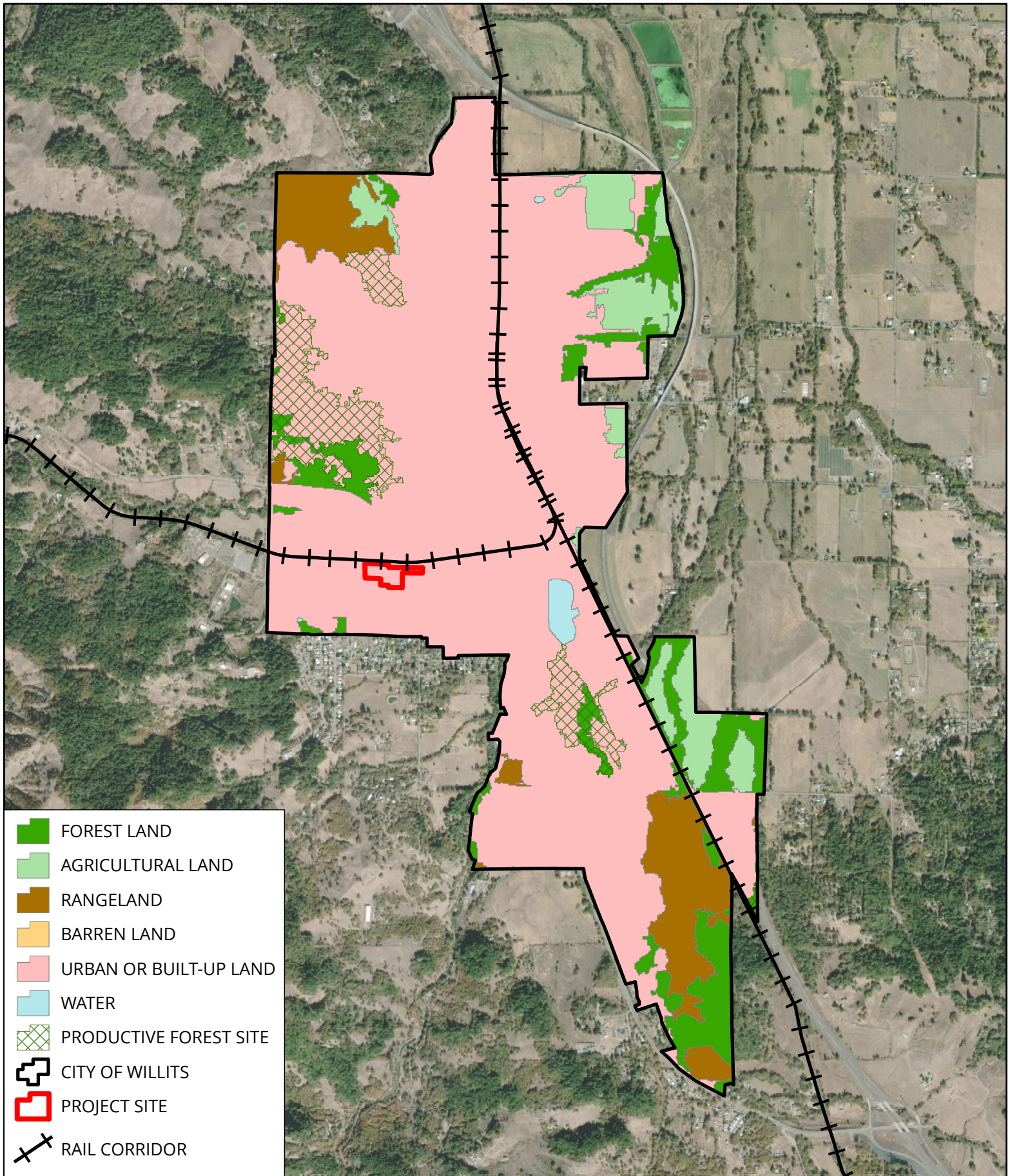


W.U.S.D. GENERAL PLAN AMENDMENT AND REZONE: IMPORTANT FARMLAND

Source: City of Willits; Mendocino County; ESRI Basemap; CA Dept of Conservation, FMMP, 2016

0 0.25 0.5 1 Miles

FIGURE A-2

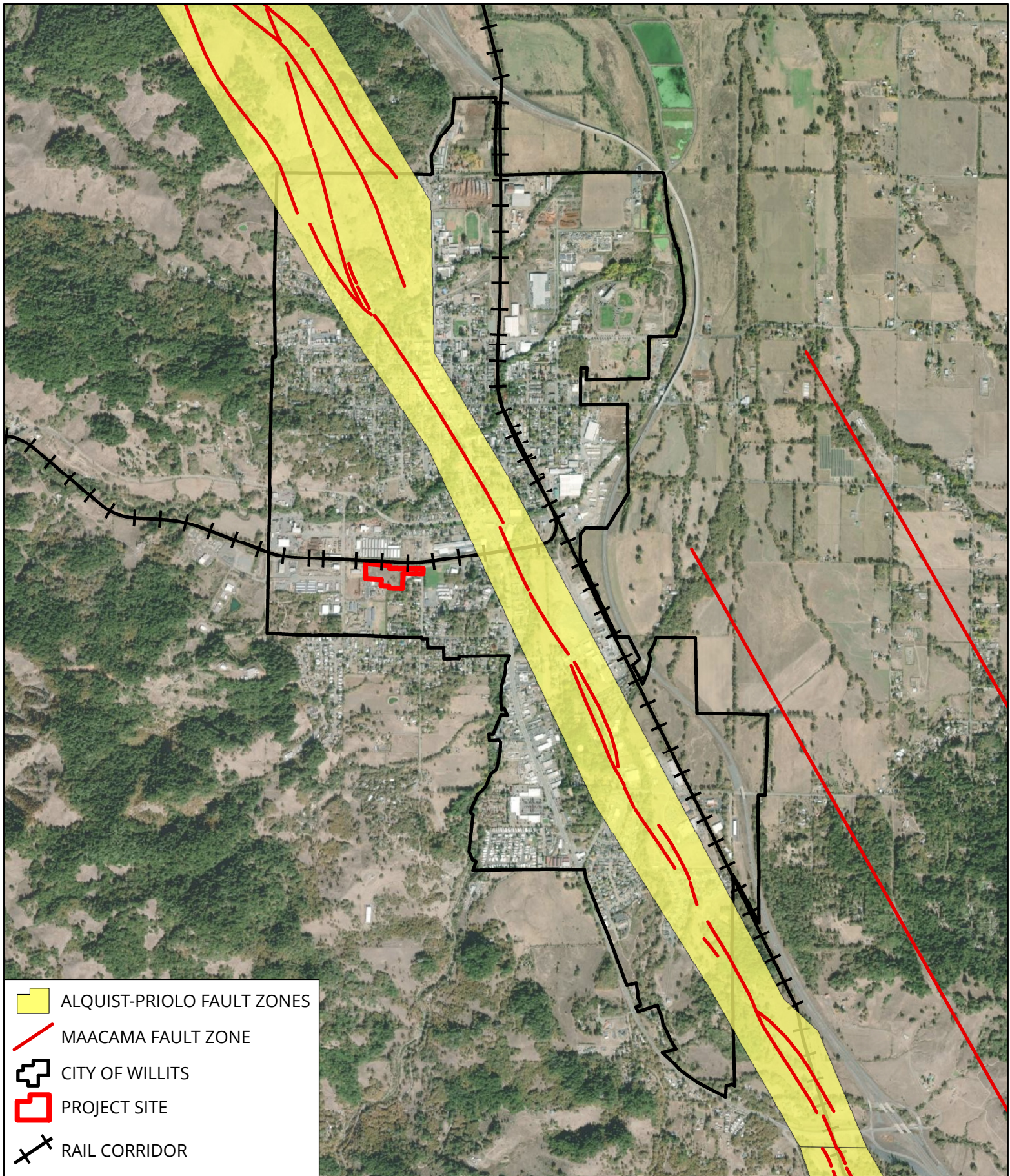


W.U.S.D. GENERAL PLAN AMENDMENT AND REZONE: LAND COVER CLASSIFICATION

Source: City of Willits; Mendocino County; ESRI Basemap; US Dept of Agriculture, Forest Service, 2007

0 0.25 0.5 1 Miles

FIGURE A-3

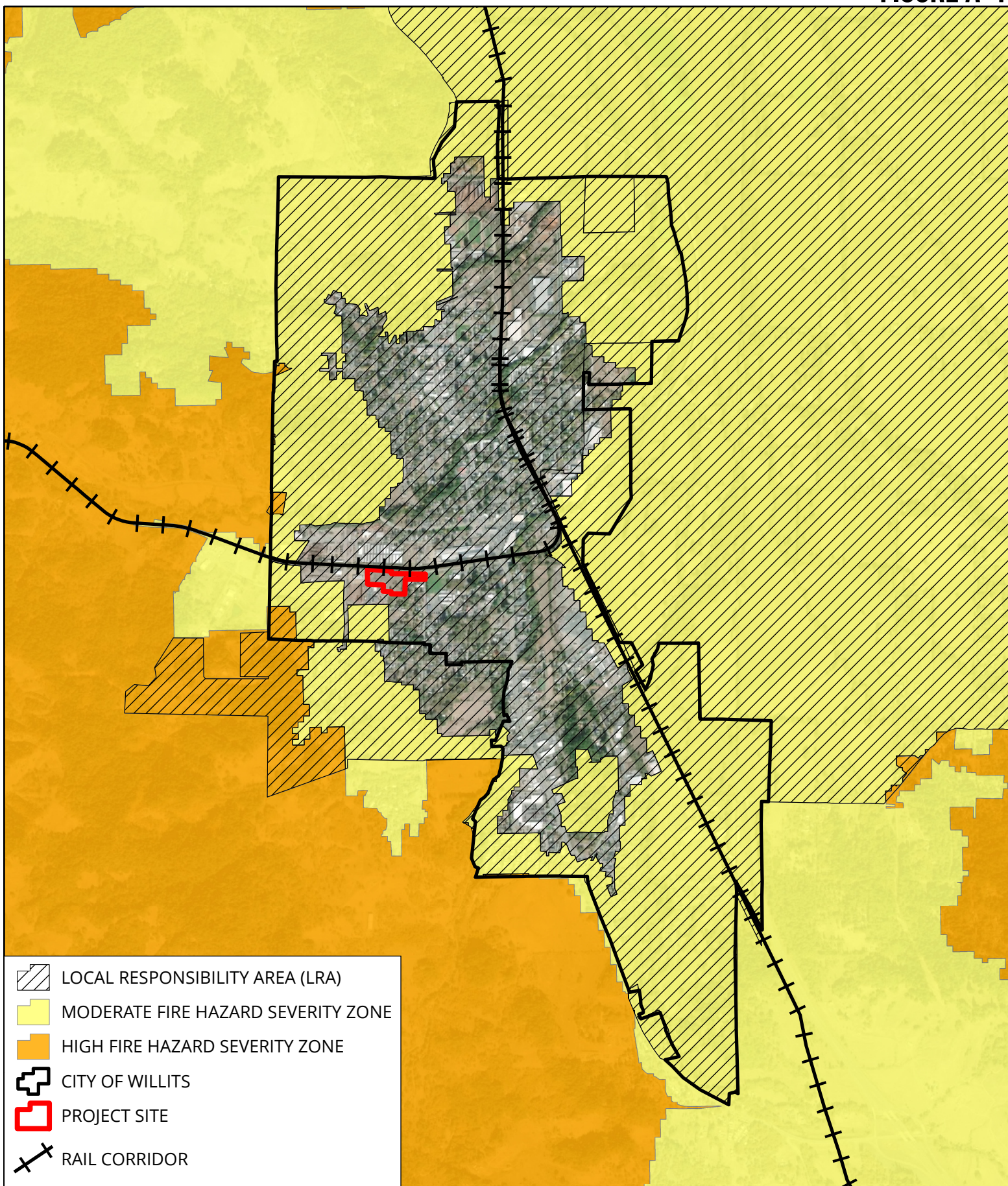


W.U.S.D. GENERAL PLAN AMENDMENT AND REZONE: FAULTS AND FAULT ZONES

Source: City of Willits; Mendocino County; ESRI Basemap; CA Geological Survey; CA Dept. of Conservation

0 0.25 0.5 1 Miles

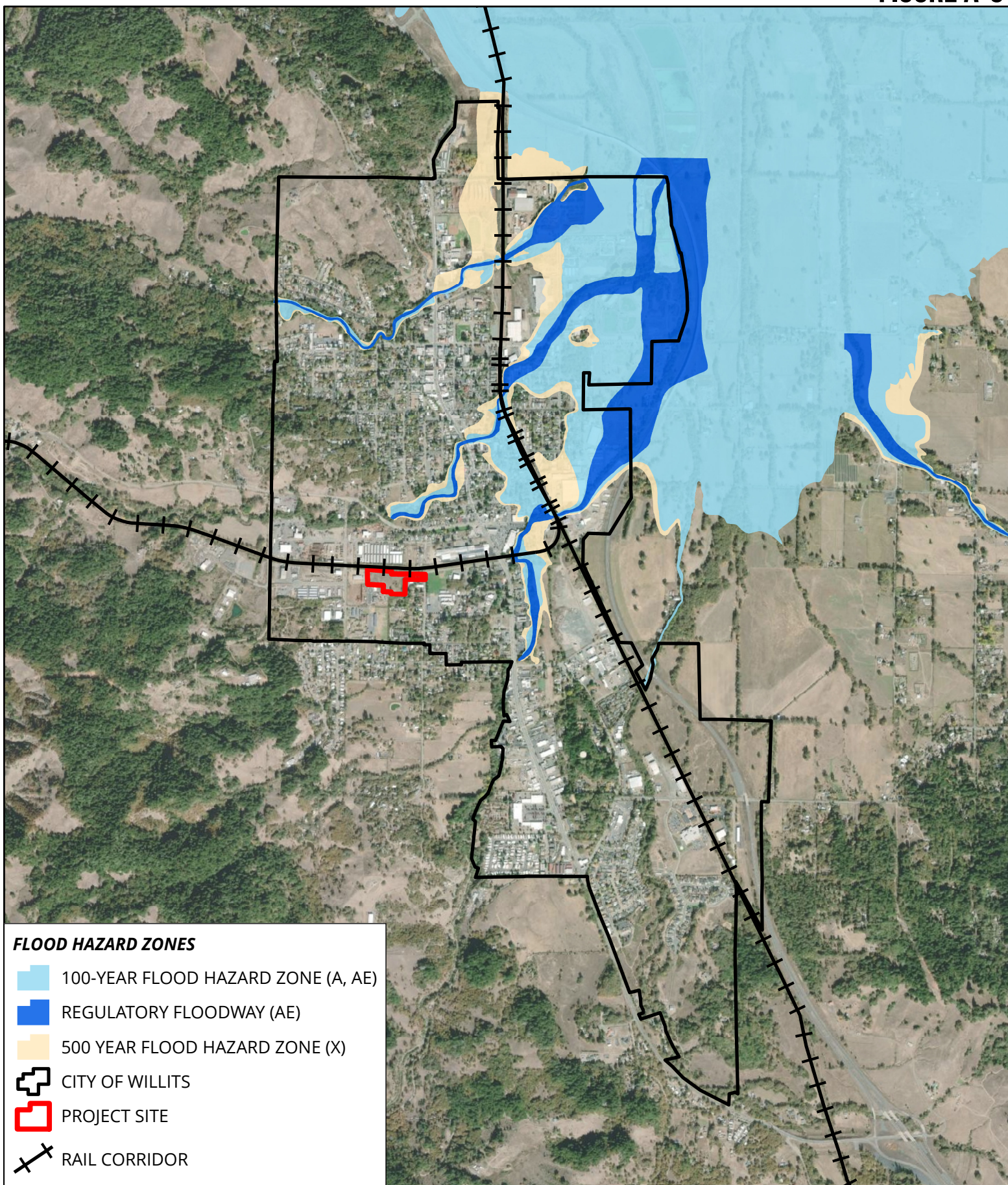
FIGURE A-4



W.U.S.D. GENERAL PLAN AMENDMENT AND REZONE: FIRE HAZARDS

Source: City of Willits; Mendocino County; ESRI Basemap; CALFIRE Draft Fire Hazard Severity Zones

FIGURE A-5



W.U.S.D. GENERAL PLAN AMENDMENT AND REZONE: FLOOD HAZARDS

Source: City of Willits; Mendocino County; ESRI Basemap; FEMA Flood Hazard Layer, 2016

0 0.25 0.5 1 Miles