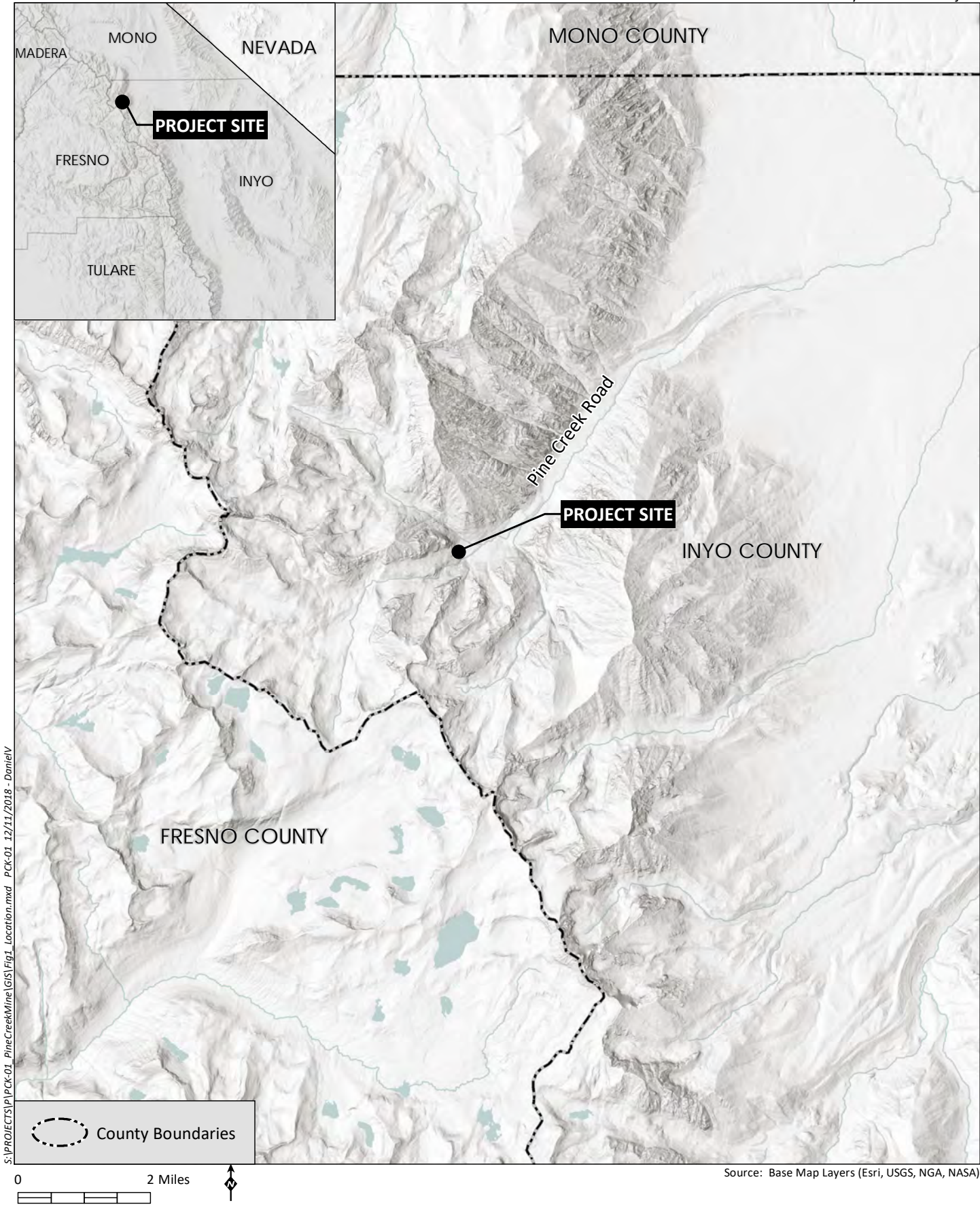
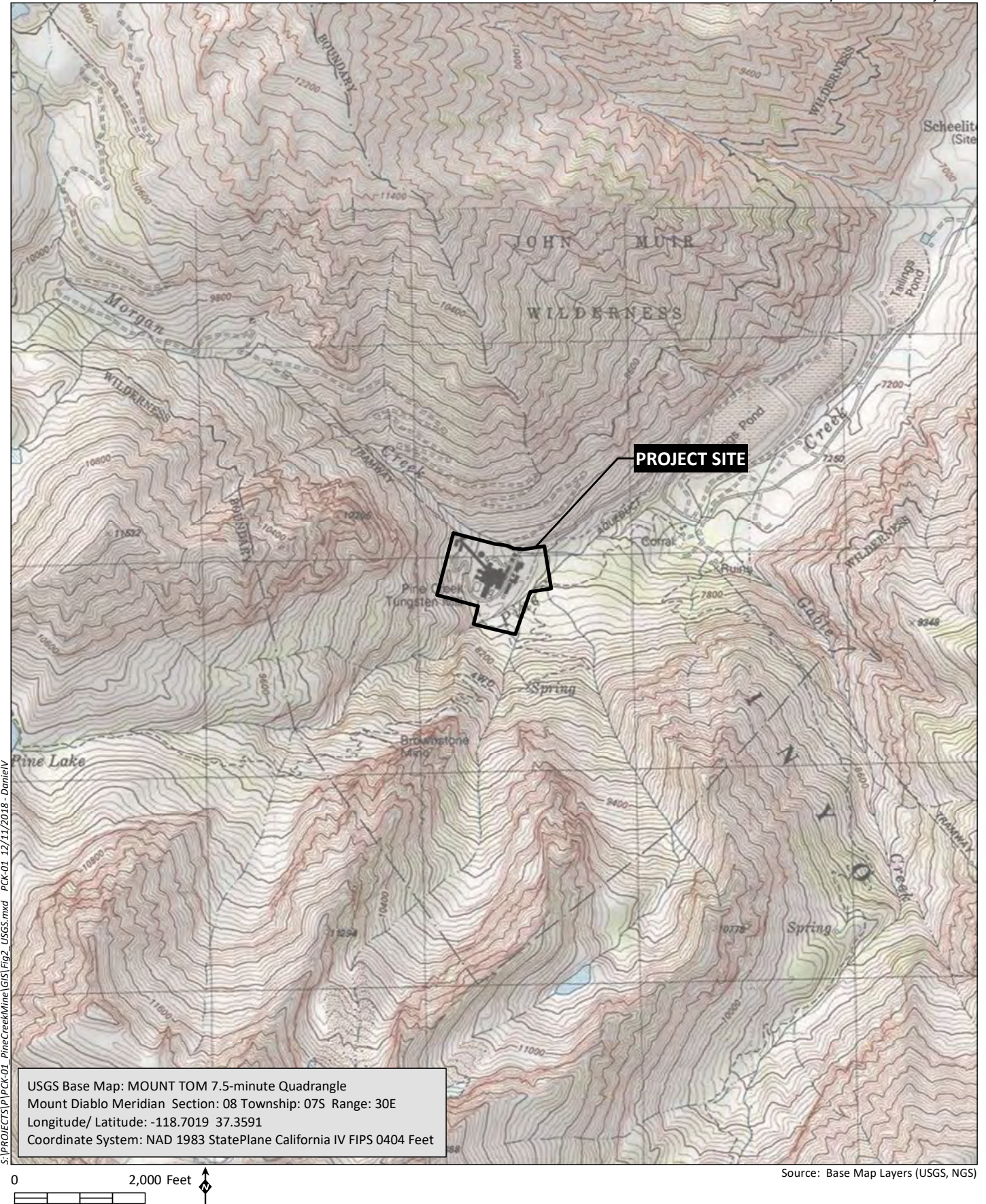


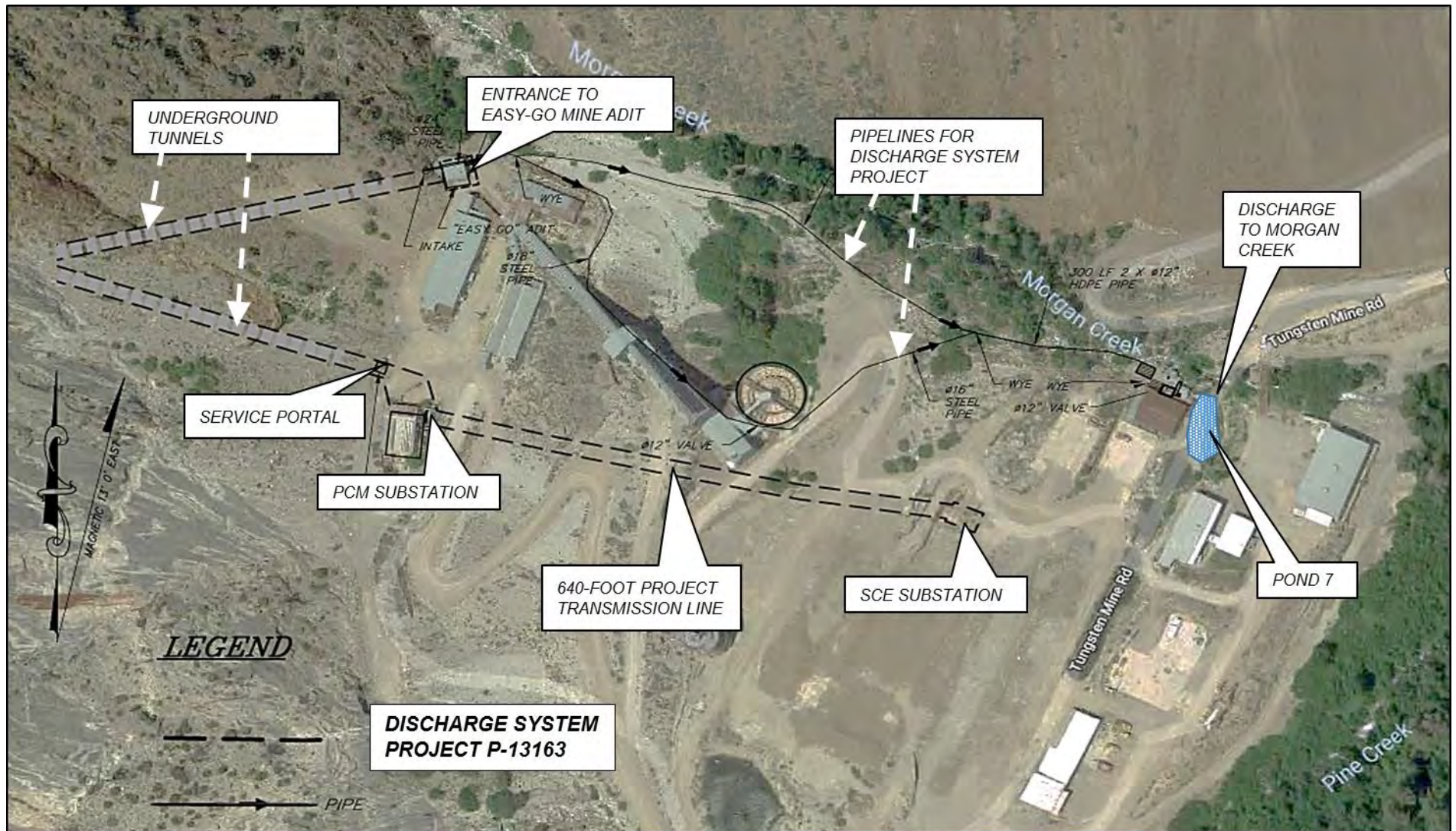
Appendix A

Figures

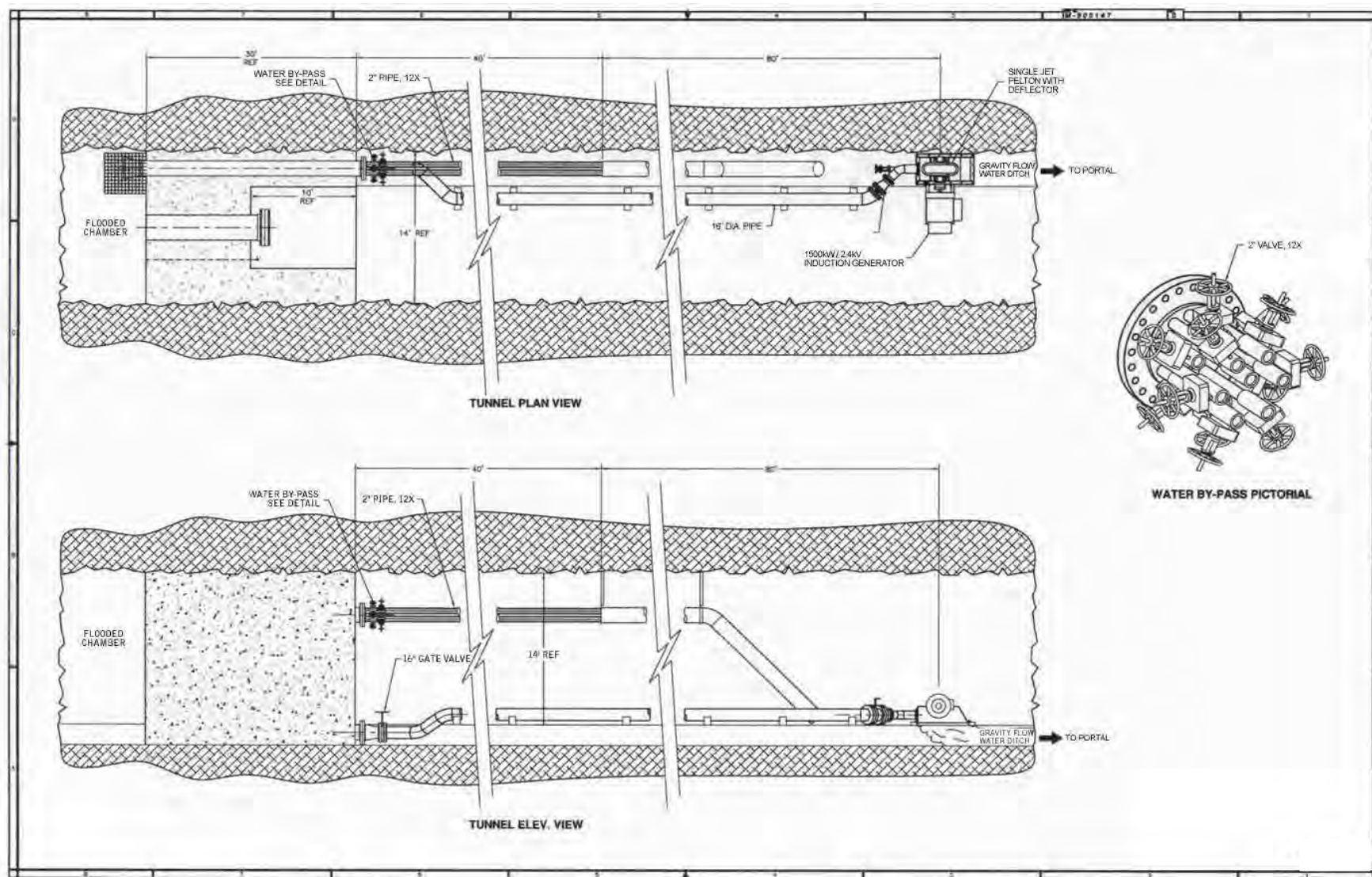








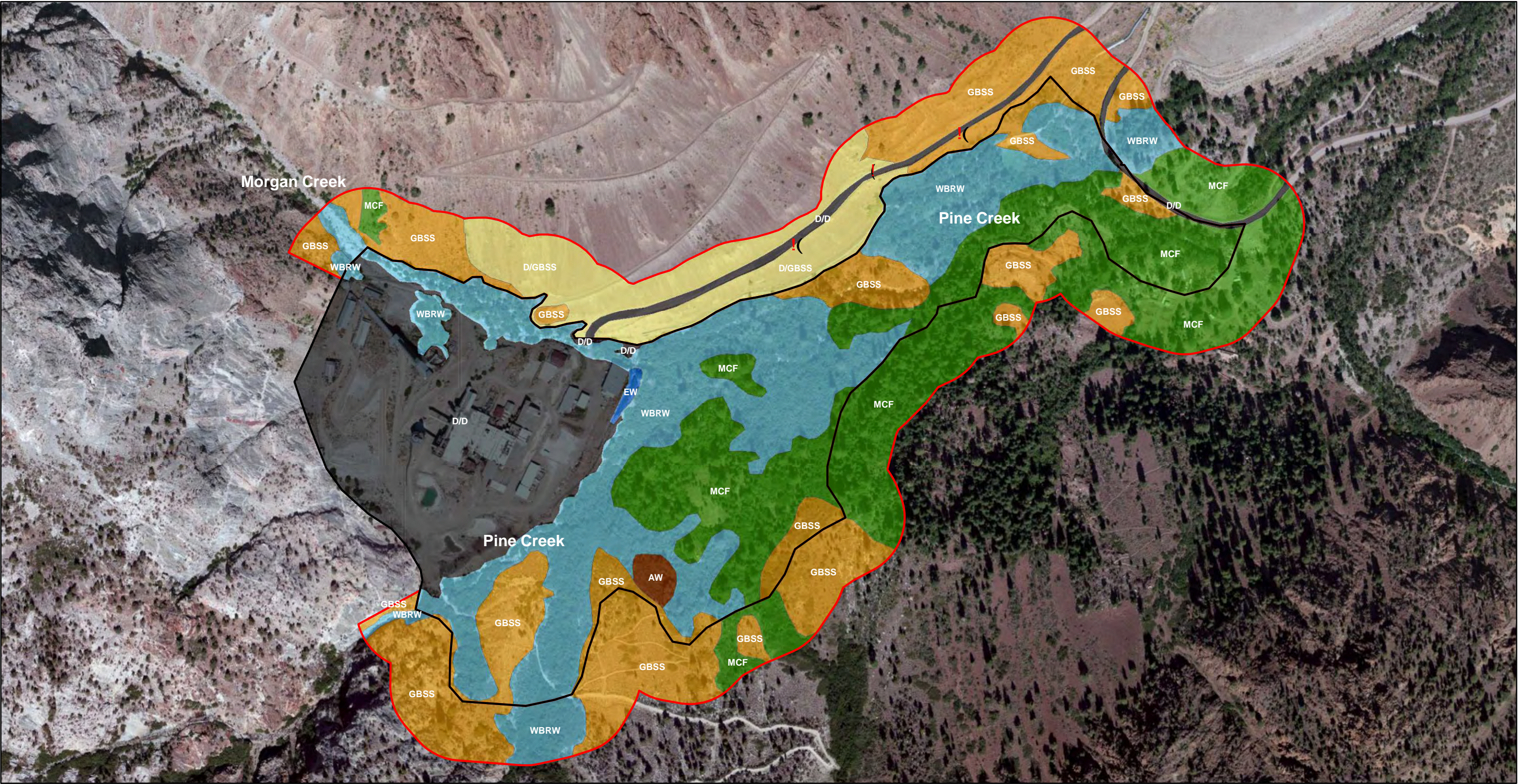
Source: PCM 2018



Source: JRP and Davis King 2015



Source: PCM 2018



Legend

- Pine Creek Mine Survey Area

250-Foot Riparian Buffer Survey Area
- AW - Aspen Woodland

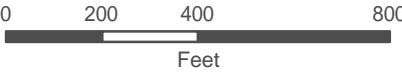
D/D - Disturbed/Developed
- D/GBSS - Disturbed/Developed

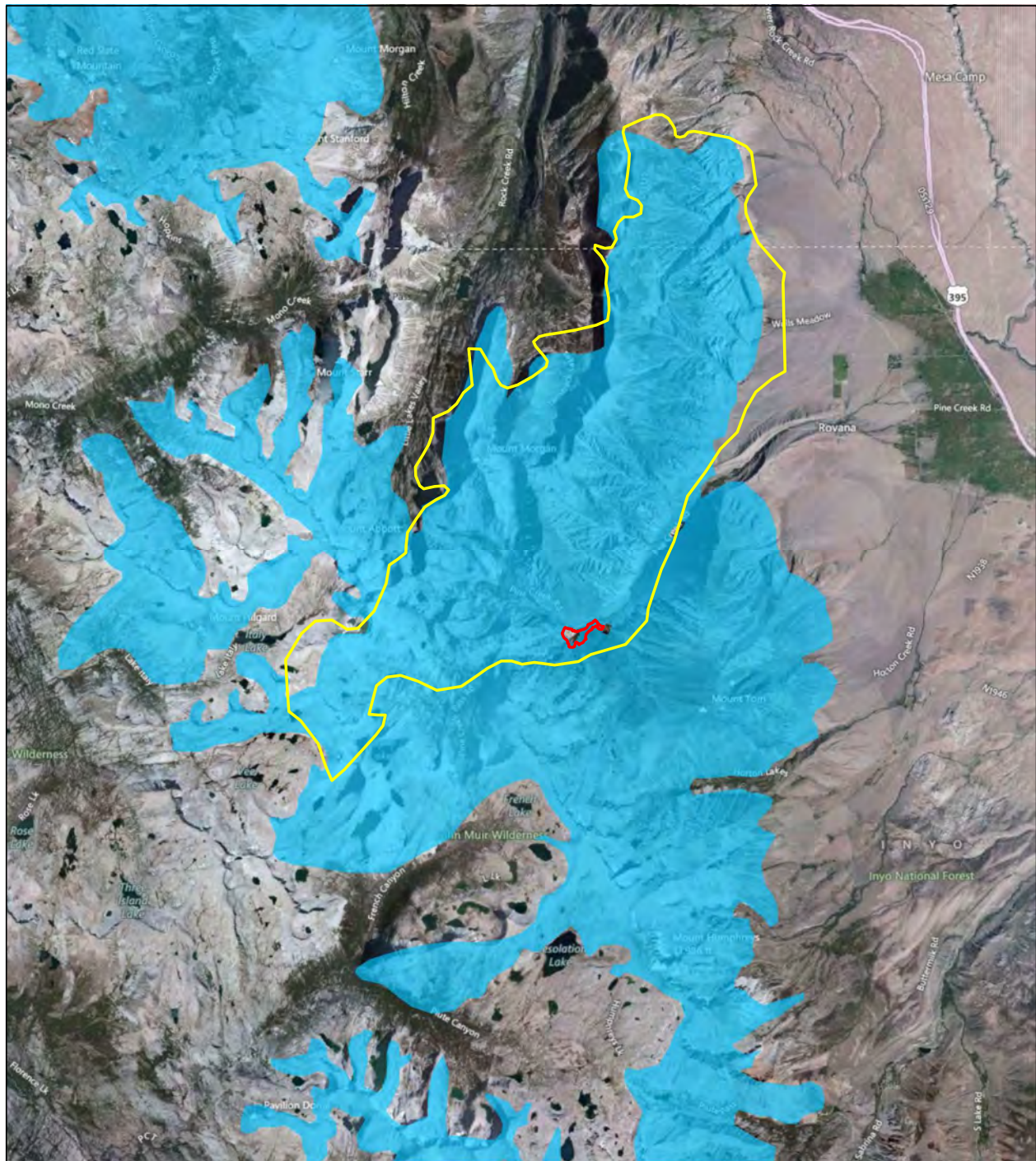
EW- Emergent Wetland
- GBSS - Great Basin Sage Scrub

MCF - Mixed Conifer Forest

WBRW - Water Birch Riparian Woodland

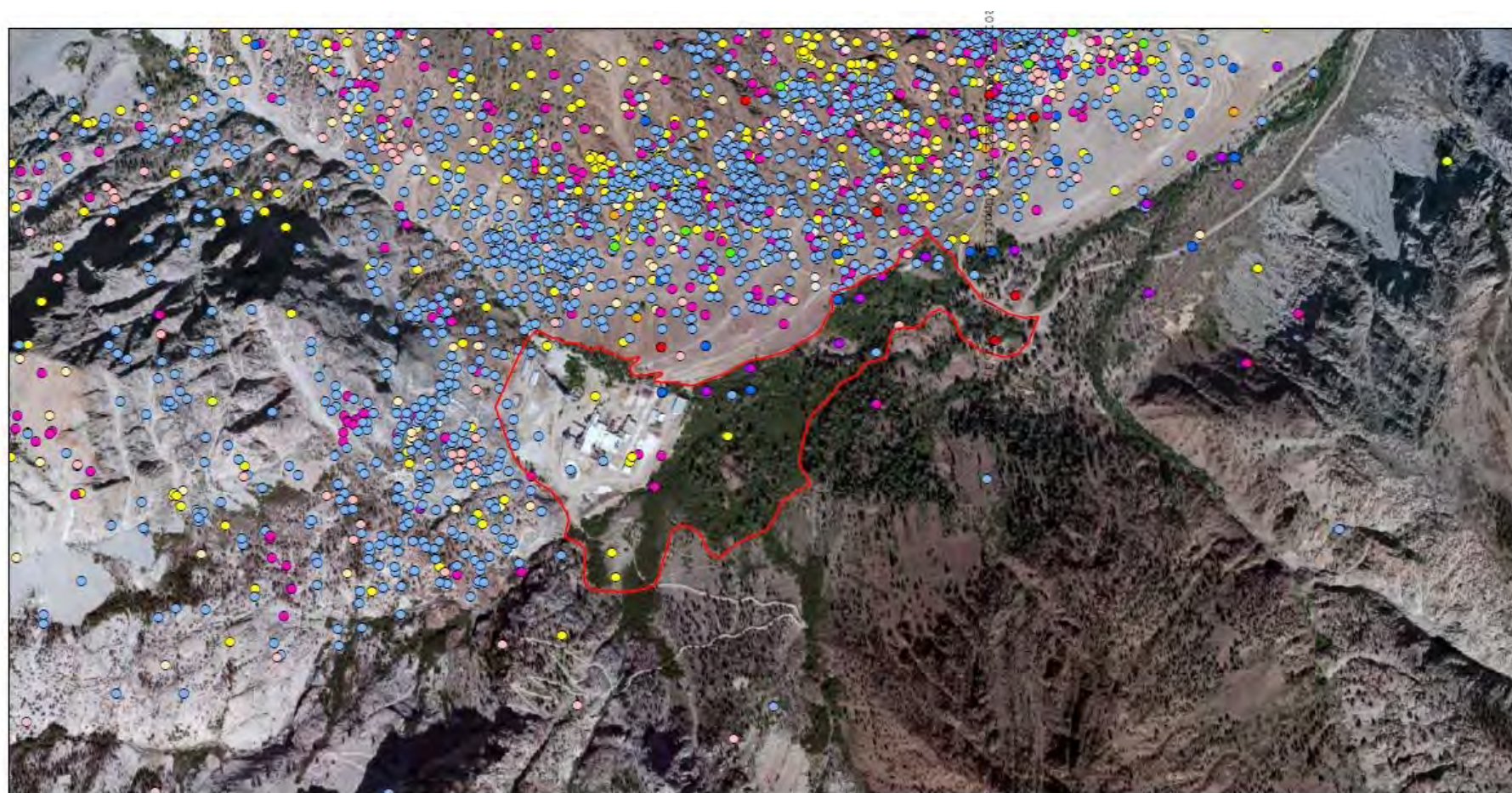
Source: GLA 2013





Source: GLA 2013

- Pine Creek Mine Survey Area
- SNBS Critical Habitat
- Boundary of Wheeler Ridge Unit Detections from 2001-2012



Source: PCM 2018

Legend

Pine Creek Mine Survey Area

Annual Detections of Wheeler Ridge Unit*

● 2001

● 2002 ● 2005 ● 2008 ● 2011

● 2003 ● 2006 ● 2009 ● 2012

● 2004 ● 2007 ● 2010 ● 2012

*Each point represents detection of a collared SNBS, which may occur individually, or with a group, and can represent the same animal detected up to three times per day.