

TECHNICAL MEMORANDUM

From: Elbert Chang, P.E., T.E.
Tyler Mickelson
Jake Mirabella
Kimley-Horn and Associates, Inc.
100 West San Fernando Street
San Jose, CA 95113

To: Mr. Scott Roycroft
Better Place Forests
3717 Buchanan Street, Ste 400
San Francisco, CA 94123

Date: December 6, 2019

Re: Better Place Forests Trip Generation Memo – Mariposa County

The purpose of this technical memorandum is to document the existing conditions of the proposed Memorial Forest Project study area and the anticipated trip generation of the Project site.

Summary of Findings

A trip generation study was performed for the proposed Project, Better Place Forest, which is a memorial forest to be located in Mariposa County, California, with a proposed access onto Dexter Road. Based on collected traffic volume data, Dexter Road experiences the highest volumes during a Saturday midday peak with 48 vehicles per hour which is the equivalent of one vehicle passing every 1 minute and 15 seconds during the peak hour.

Project conditions and trip generation were developed using memorial forest data from an existing memorial forest, planned project operations, and ITE trip generation rates (ITE LUC 566 Cemetery). ITE Cemetery trip generation rates were reduced by a factor of 10.88 as the proposed memorial forest is expected to be 10.88 times less dense than a traditional cemetery. Better Place Forest's day to day operation differs from typical cemetery operation in that all visitations are by appointment only. Therefore, while ITE trip generation data is useful in predicting the possible demand that may be experienced, Better Place Forest will be able to limit visitation (and therefore trip generation) to prevent conflicting visits and ensure adequate parking when visitors arrive.

Expected trip generation based on ITE data and based on operational characteristics was compared. These two methods produced similar peak hour trip generation estimates, therefore ITE trip generation rates

were used as these are based on well-established nation-wide databases characterizing trip generation for the entire site. Applying the reduced weekday trip generation rates for ITE LUC 566, the Project is expected to generate 56 daily weekday trips, 2 AM peak hour trips (2 IN, 0 OUT), and 4 PM peak hour trips (1 IN, 3 OUT). Applying the Saturday reduced trip generation rates for ITE LUC 566 the Project is expected to generate 84 daily Saturday trips with 18 peak hour trips (10 IN, 8 OUT). Applying the Sunday reduced trip generation rates for ITE LUC 566 the Project is expected to generate 128 daily Sunday Mid-day trips with 24 peak hour trips (12 IN, 12 OUT).

Existing Conditions

The Project is proposed to be located at 10980 Dexter Road in Coulterville in Mariposa County. Dexter Road is a paved two lane rural road with no shoulders and provides the only access to the Project driveway. Twenty-four-hour traffic counts were collected over a seven-day period to determine current traffic patterns along Dexter Road. Counts were collected from October 8, 2019, to October 14, 2019. Figure 1 shows the existing hourly volumes on weekdays from Monday through Friday. A maximum weekday hourly volume of 44 vehicles was observed on Wednesday evening during the hour starting at 4:30 PM. Figure 2 shows the existing hourly volumes on Dexter Road on the weekend, Saturday and Sunday. A maximum weekend hourly volume of 48 vehicles was observed on Saturday during the hour starting at 12:15 PM.

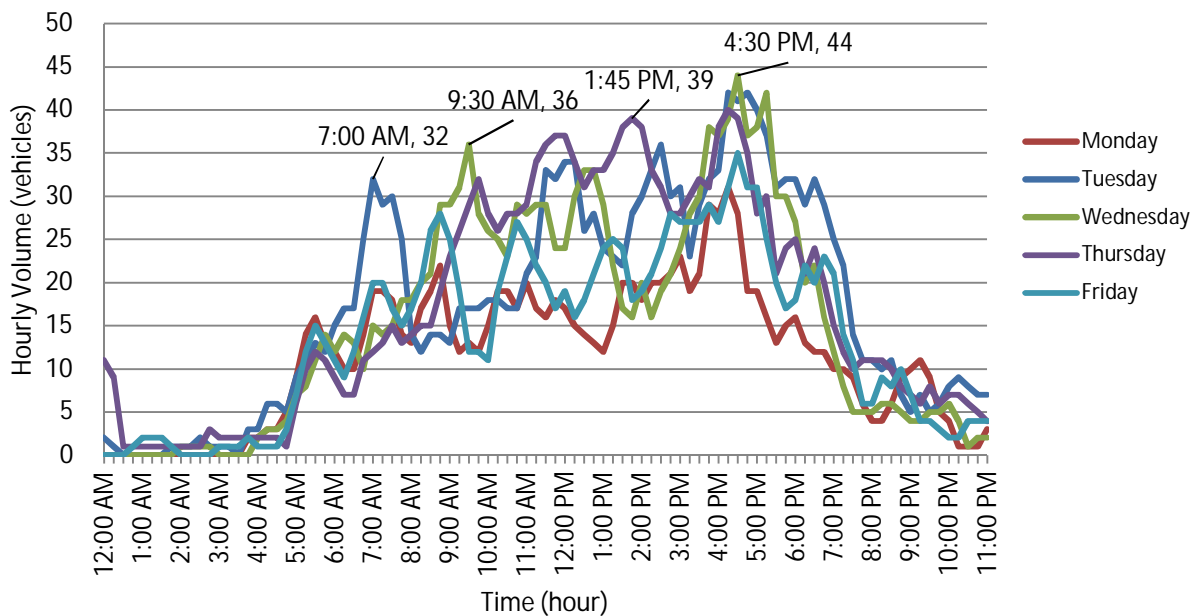


Figure 1 – Hourly Weekday Volumes on Dexter Road

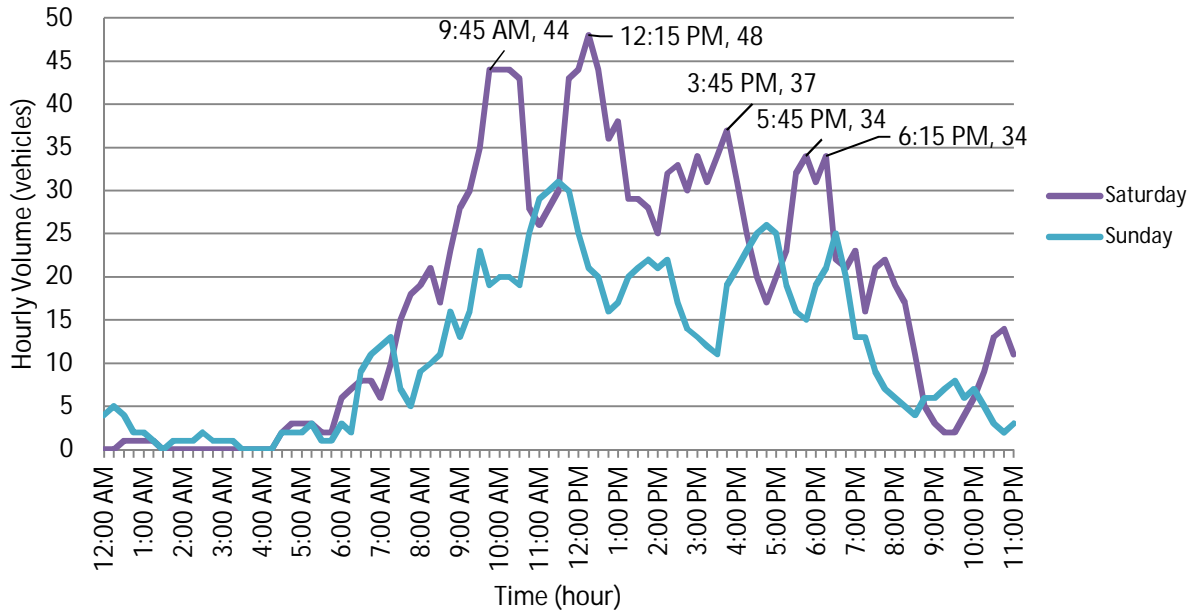


Figure 2 – Hourly Weekend Volumes on Dexter Road

The peak volume on Dexter Road of 48 vehicles per hour, experienced during the Saturday midday peak hour, is the equivalent of one vehicle passing on average every 1 minute and 15 seconds. All other peak periods experienced less traffic than 48 vehicles per hour. Collected traffic count data is included in the Appendix.

Project Description

The Project proposes to develop a 100 acre memorial forest within a 170-acre property located in Mariposa County, California. A memorial forest is a place where visitors can buy the rights to spread the ashes of loved ones at the base of a specific tree. The Project is proposed to operate at a density of 50 sellable trees per acre for a total potential of 5,000 trees. The trip generation analysis was performed assuming maximum density at full buildout to represent the highest potential for trip generation. Based on conversations with the Project team, the site is not expected to be completely sold out for at least 5 to 10 years after opening. The development will divide the 100-acre memorial forest into sections approving only one section at a time for use in tree selection and spreading ceremonies. As approved areas begin to sell out, subsequent areas will be prepared for tree selection. This will result in only a portion of the entire forest available for tree selection at any given time.

Site Operation

The Project's operating hours will be from 8:00am to 6:00pm, and it is anticipated that the Project will require two employees to operate the site. The following visitor types (by appointment only) are expected to travel to/from the site:

1. Initial Tree Selection
2. Spreading Ceremony (typically small gatherings)

3. Recurring Visits

The site can only be accessed via Dexter Road which is a paved two-lane rural road maintained by the County of Mariposa. A site plan of the proposed memorial forest is included in the Appendix.

In addition to visitors and employees, there is the potential for other trips to the project in the form of deliveries, maintenance, waste management and other services.

It is anticipated the proposed Project will provide a total of 20 parking stalls for use on the site. All trips to and from the site must be scheduled, including recurring visits. This way the project can manage the limited parking supply on site and maintain a quiet and peaceful atmosphere.

The Project will have specific days of the week that are reserved for spreading ceremonies with a maximum of 3 spreading ceremonies occurring on any single day. On a spreading ceremony day, the only trip generation will come from the ceremonies and Project staff (2 people). Upon scheduling spreading ceremonies, patrons will be reminded of the parking limitations at the Project site so that they may plan accordingly.

Other days of the week will be available for site selection, and recurring visits. On these days the trip generation will come from site selection and recurring visitors, Project staff (2 people), and any deliveries/services associated with day-to-day operations of the Project.

Better Place Forests Arrival Data

To better quantify trip generation for the unique land use of the Project, trip data for an existing memorial forest location was provided by Better Place Forests. Arrival data for tree selection from the Point Arena Memorial Forest was analyzed which includes 747 sold, and 3,000 total trees.

Figure 3 shows total arrivals for tree selection by month for the past year. At the Point Arena location, there was a peak of 56 arrivals to the site in the month of September 2018.

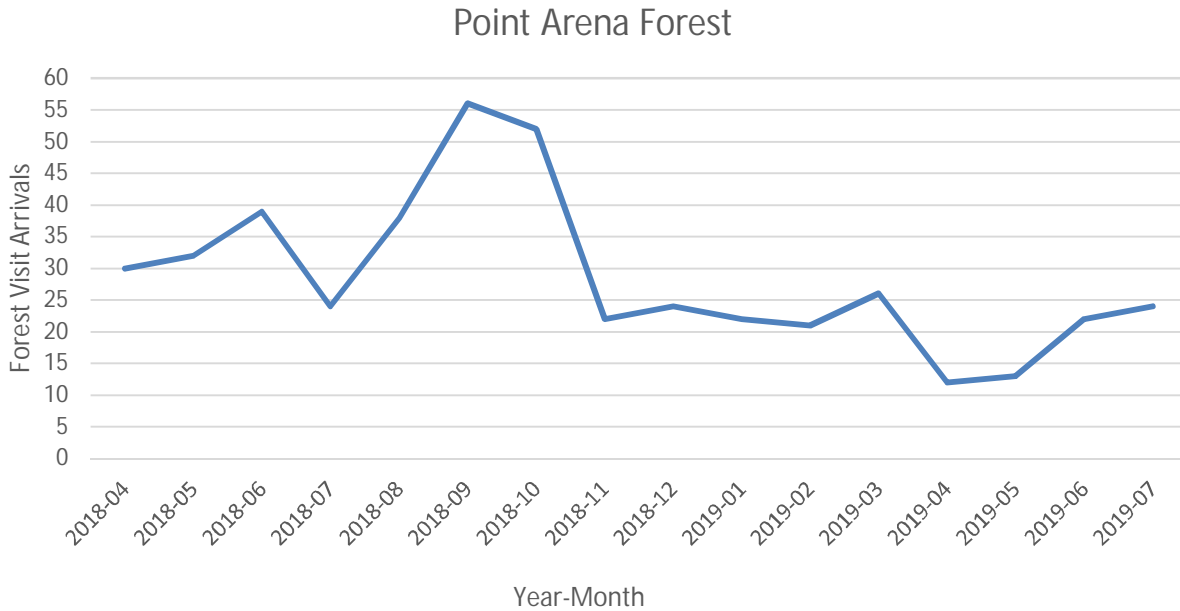


Figure 3 – Monthly Forest Arrivals

Daily arrival data from 2018 to 2019 was also provided by Better Place Forests and is included with the monthly data in the Appendix. It was determined that an average of 0 trips occurred during the AM peak hour, an average of 2 trips occurred during the PM peak hour, and an average of 4 trips occurred during the weekend.

Ceremony visitation data was also provided by Better Place Forests showing group size for ceremonies between the months of March and November of 2019. Over this time, 58 ceremonies were held for a total of 453 attendees. Of the 58 ceremonies reported the average group size is 8 people per ceremony. The most common group size is 2 people per ceremony. The largest observed groups size was 24 people. Ceremony visitation data is included in the Appendix.

This data is helpful in illustrating trip generation of the Project site for initial tree selection and ceremony visitation purposes. This data does not capture return visits to already dedicated trees (expected to increase as more trees are dedicated) and does not capture the trip generation of other vehicles traveling to and from the site.

Data provided by the Institute of Traffic Engineers (ITE) captures all these trip purposes in their data by quantifying all trips regardless of purpose. Therefore, ITE data was used to develop a land-use specific trip generation rate for the proposed Project, and these rates were then compared to expected trip generation based on project site operation described in the previous section.

ITE and Operational Trip Generation Analysis

ITE Trip Generation

The Institute of Transportation Engineers (ITE) *Trip Generation Manual, 10th Edition (2017)* was utilized to estimate the trip generation for the proposed Project. ITE is limited to certain land use types and the Project site is most accurately represented by Land Use Code (LUC) 566 (Cemetery).

The Project is anticipated to be less dense than a traditional cemetery, so LUC 566 trip generation rates were reduced to accurately represent trips to/from the site. To reduce the rates provided by ITE, the American Planning Association (APA) *Cemeteries in the City Plan* was utilized. According to this report, a traditional cemetery has a plot density of 544 plots per acre. Plot density refers to the number of graves per acre at the cemetery. The proposed Project site has will have 50 sellable trees (plots) per acre.

In adjusting the ITE cemetery land use to the Project, it was assumed that one grave is the equivalent to one dedicated tree as each is assigned to only one person. Therefore, a typical cemetery, which is 10.88 ($544/50 = 10.88$) times denser than the proposed memorial forest would be expected to produce, on average, 10.88 times the number of trips. Trip generation was estimated for the entire buildout of the Project which includes approximately 100 acres and 5,000 purchasable trees.

Operational Trip Generation

Operational Trip Generation was determined based on type of day and collected data from an existing Better Place Forest. As described in the site operations section, the Project will have one or two specific days a week reserved for spreading ceremonies (ceremony day); the other days for recurring visits and site selection. Regardless of the type of day (ceremony, recurring visits, or site selection), all visits to the Project will be by appointment only.

Based on the 2019 data, ceremony days are expected to have the highest trip generation compared to the other days. Based on the 2019 data, the party size during site selection ranges from 1-3 people, while the average party size for a spreading ceremony is 8 people. (Data for recurring visits is not available but is not expected to be higher than ceremony days.) The typical operational trip daily and peak period generation for a ceremony day was estimated by assuming that 3 ceremonies (maximum allowed) would occur on the same day with one occurring in the morning, one in the afternoon, and one in the early evening. Conservative assumptions for vehicle occupancy of 1 person per vehicle were applied to the average group size of 8 people. In addition, trips generated by 2 employees were assumed.

Trip Generation Comparison

As shown in Table 1, applying the reduced weekday trip generation rates for ITE LUC 566 indicates that the Project would generate 56 daily trips, 2 AM peak hour trips (2 IN, 0 OUT), and 4 PM peak hour trips (1 IN, 3 OUT). In comparison, operational trip generation on a typical ceremony day with 3 services would generate 64 daily trips, 12 AM peak hour trips (12 IN, 0 OUT), and 12 PM peak hour trips (0 IN, 12 OUT).

As shown in Table 2, applying the Saturday reduced trip generation rates for ITE LUC 566 indicates that the Project generates 84 daily Saturday trips with 18 peak hour trips (10 IN, 8 OUT). Applying the Sunday

reduced trip generation rates for ITE LUC 566 indicates that the Project generates and 128 daily Sunday trips with 24 peak hour trips (12 IN, 12 OUT). In comparison, operational trip generation on a typical ceremony day with 3 services would generate 64 daily trips, 12 AM peak hour trips (12 IN, 0 OUT), and 12 PM peak hour trips (0 IN, 12 OUT)

Table 1 – Weekday Trip Generation Estimates

Land Use	Units	Daily Trips	AM Peak Hour			PM Peak Hour		
			IN	OUT	TOTAL	IN	OUT	TOTAL
Trip Generation Rates								
ITE Cemetery	- Acres	6.02	80%	20%	0.17	31%	69%	0.46
Memorial Forest ²	- Acres	0.55	80%	20%	0.02	31%	69%	0.04
ITE Project Trip Generation								
Better Place Forests	100 Acres	56	2	0	2	1	3	4
Operational Trip Generation								
Ceremony Day ³	3 Services	64	12	0	12	0	12	12
Project Trips		56	2	0	2	1	3	4

Notes:

1. Trip generation average rates published by Institute of Transportation Engineers (ITE), "Trip Generation," 10th Edition, 2017.
2. ITE Cemetery land use rates reduced by a factor of 10.88 due to lower density at the proposed Project.
3. Represents operational trip generation based on average group size for spreading ceremonies. 3 services are the maximum allowed on a ceremony day. Ceremony days with 3 services are expected to be a higher trip generator than other days of the week.

Table 2 – Weekend Trip Generation Estimates

Land Use	Units	Saturday Daily	Saturday (Peak Hour)			Sunday Daily ⁴	Sunday (Peak Hour)		
			IN	OUT	TOTAL		IN	OUT	TOTAL
Trip Generation Rates									
ITE Cemetery	- Acres	8.99	53%	47%	2.00	13.94	50%	50%	2.63
Memorial Forest ²	- Acres	0.83	53%	47%	0.18	1.28	50%	50%	0.24
Project Trip Generation									
Better Place Forests	100 Acres	84	10	8	18	128	12	12	24
Operational Trip Generation									
Ceremony Day ³	3 Services	64	0	12	12	64	0	12	12
Project Trips		84	10	8	18	128	12	12	24

Notes:

1. Trip generation average rates published by Institute of Transportation Engineers (ITE), "Trip Generation," 10th Edition, 2017.
2. ITE Cemetery land use rates reduced by a factor of 10.88 due to lower density at the proposed Project.
3. Represents operational trip generation based on average group size for spreading ceremonies. 3 services are the maximum allowed on a ceremony day. Ceremony days with 3 services are expected to be a higher trip generator than other days of the week.
4. The peak trip generation shown on a Sunday in the ITE data is representative of traditional cemeteries. Better Place Forest locations experience weekend visitations spread evenly over Saturdays and Sundays.

Conclusion

A trip generation study was performed for the proposed Project, Better Place Forest, which will be a memorial forest located in Mariposa County, California. Based on collected traffic volume data, Dexter Road experiences the highest volumes during a Saturday midday peak with 48 vehicles per hour which is the equivalent of one vehicle passing every 1 minute and 15 seconds during the peak hour.

Expected trip generation based on ITE data and on operational characteristics was prepared and compared with each other. These two methods produced similar peak hour trip generation estimates, therefore ITE trip generation rates were used as these are based on well-established nation-wide databases characterizing trip generation for the entire site. Using a calibrated trip generation rate based off of ITE and Project specific data, the Project is expected to generate 55 weekday daily trips, 2 AM peak hour trips (2 IN, 0 OUT), and 4 PM peak hour trips (1 IN, 3 OUT), 83 daily Saturday trips with 18 peak hour trips (10 IN, 8 OUT), and 128 daily Sunday Mid-day trips with 24 peak hour trips (12 IN, 12 OUT).

Appendix

A – Project Site Plan

B – Hourly Traffic Counts (7-Days)

C – Better Forests Visitation Data

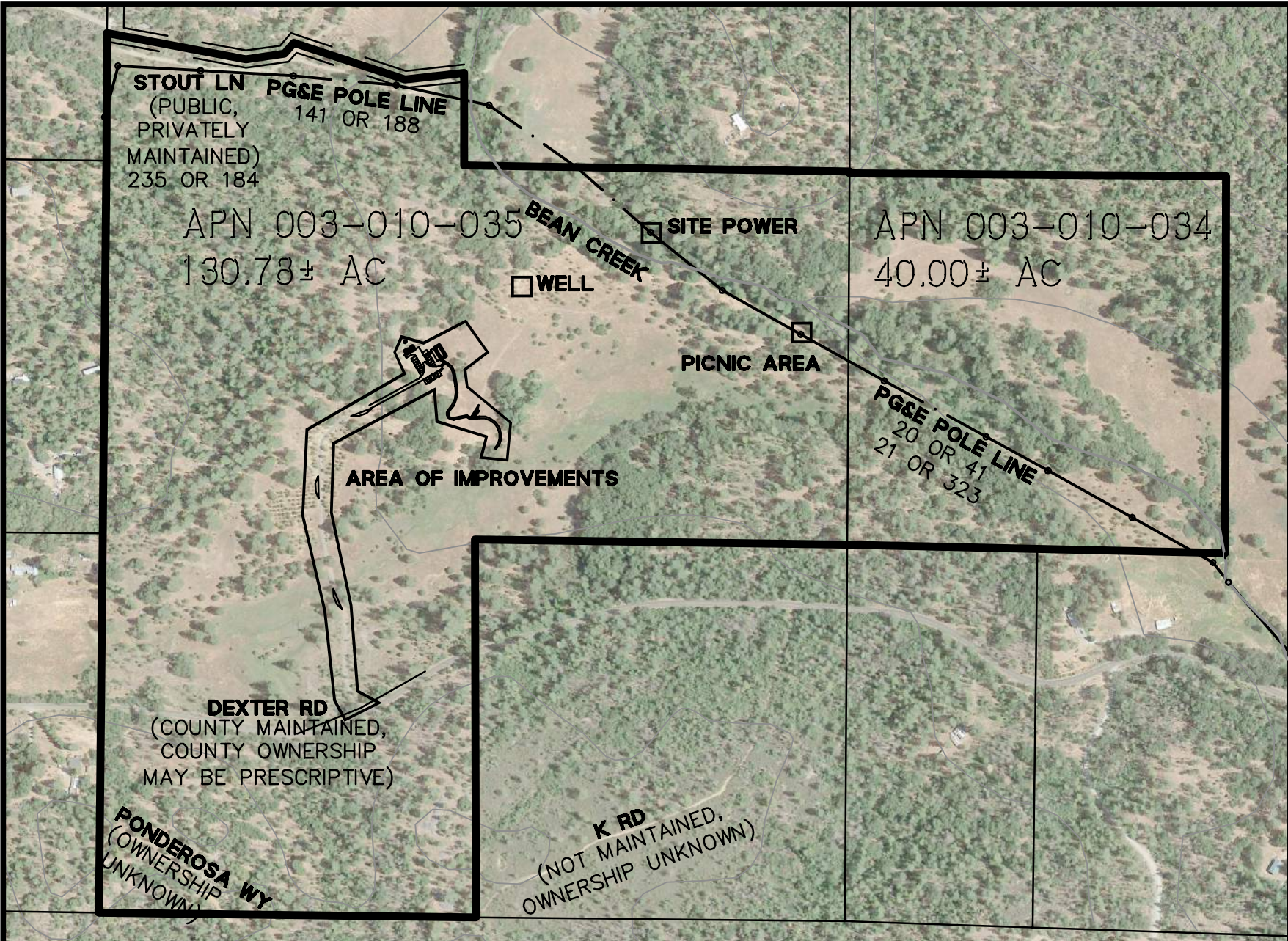
C.1 – Monthly Visits to Point Arena

C.2 – Initial Tree Selection Visits (Data)

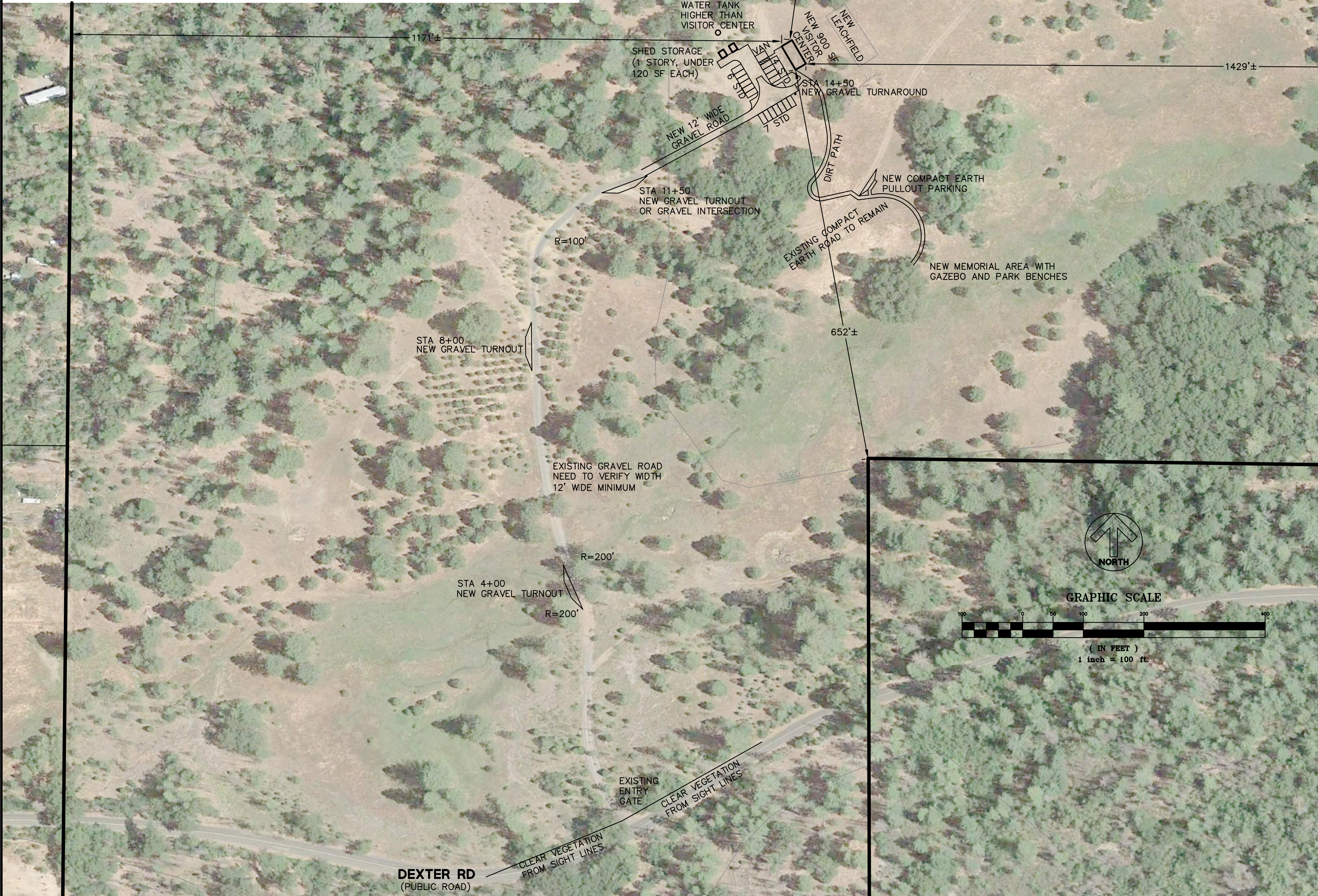
C.3 – Initial Tree Selection Graphs

Appendix A

DRAWING NAME: K:\2019\190975 Better Places Forests_MariPosa\ENG\EXHIBITS\2019-07-11_concept_site_plan\MariPosa_site_plan.dwg
PLOT DATE: 07-24-19 PLOTTED BY: palm



ENTIRE SITE
1"=500'



SITE PLAN
1"=100'



PARKING PLAN
1"=20'

NOTES:

- 1) SITE INCLUDES APN 003-010-034, -035
- 2) THIS PROPOSAL DOES NOT ANTICIPATE ANY MAJOR GRADING, THEREFORE A PRELIMINARY GRADING PLAN IS NOT REQUIRED.
- 3) VERY LITTLE LANDSCAPING WILL OCCUR ALTHOUGH DISTURBED AREAS WILL BE PLANTED WITH NATIVE SPECIES.
- 4) NO OUTDOOR LIGHTING WILL BE PRESENT ON SITE.
- 5) THE DRIVEWAY WILL BE WIDENED TO 12' IF IT IS NOT ALREADY THAT WIDE AS ADVISED BY MARIPOSA COUNTY FIRE DEPARTMENT.
- 6) EASEMENTS:
 - A) SEVERAL PG&E EASEMENTS EXIST ON THIS PROPERTY. NONE COULD BE PLOTTED. THEY ARE ASSUMED TO APPLY TO THE EXISTING OVERHEAD WIRES AS NOTED.
 - B) A PRIVATE STREET MAINTENANCE AGREEMENT EXISTS FOR STOUT LANE. THE PARCEL MAP RECORDED AT BOOK 20, PAGE 3 SHOWS A 60' WIDE RIGHT OF WAY CENTERED ON THE NORTHERLY PROPERTY LINE OFFERED FOR DEDICATION TO THE PUBLIC. THIS WAS LIKELY ACCEPTED BUT MAINTENANCE RESPONSIBILITY REMAINS PRIVATE.
 - C) DEXTER ROAD IS COUNTY MAINTAINED BUT MAY NOT HAVE A RECORDED EASEMENT. THIS IS LIKELY COUNTY OWNERSHIP THROUGH PRESCRIPTIVE RIGHTS.
 - D) PONDEROSA WAY WAS BUILT AS A FIRE BREAK. OWNERSHIP IS NOT COUNTY BUT MAY BE STATE. THE ROAD IS EARTHEN AND PROBABLY UNMAINTAINED BUT APPEARS TO BE USED.
 - E) A BOUNDARY SURVEY WOULD BE REQUIRED TO DETERMINE WHETHER K ROAD CROSSES THE PROPERTY. OWNERSHIP IS UNDETERMINED. THE DIRT ROAD IS UNMARKED AND THE ROAD IS APPARENTLY UNUSED AND NOT MAINTAINED.
- 7) ALL FORESTED AREA WITHIN THE PROPERTY MAY BE USED FOR TREE VISITATION AND CREMATION SPREADING. THESE TREES WILL BE ACCESSED BY PRE-EXISTING OR INFORMAL FOOT PATHS.
- 8) BOUNDARY, PHOTOGRAPHIC AND TOPOGRAPHIC INFORMATION SHOWN ON THIS PLAN WERE OBTAINED FROM SOURCES OF VARYING RELIABILITY AND VISUALLY CORRELATED. THEY SHOULD BE USED FOR CONCEPT PLANNING ONLY AND NOT BE USED TO DETERMINE RELIABLE POSITIONS OF FEATURES ON THE PROPERTY. THE INTENT OF THIS PLAN IS TO FIT IMPROVEMENTS BETWEEN EXISTING TREES AND USE THE EXISTING ROADS. ALL DIMENSIONS ARE APPROXIMATE.
 - A) THE BOUNDARY SHOWN WAS TRACED FROM THE MARIPOSA COUNTY ASSESSOR MAP.
 - B) CONTOUR INFORMATION WAS TRACED FROM THE MAP OF GROVELAND, CA BY USGS DATED 2015.
 - C) AERIAL IMAGERY IS BY GOOGLE DATED 6/25/2018.

Revisions

No.

Date 7-24-2019
Scale AS SHOWN
Design KP
Drawn KP
Approved
Job No 20190975

Drawing Number:

1
OF

Appendix B

VOLUME

Dexter Rd Near 10980 Dexter Rd

Day: Tuesday
Date: 10/8/2019City: Coulterville
Project #: CA19_7371_001

DAILY TOTALS					NB	SB						EB	WB						Total
					0	0						186	223						409
AM Period	NB	SB	EB	WB	TOTAL		PM Period	NB	SB	EB	WB	TOTAL							TOTAL
00:00			0	1	1		12:00			2	6	8							8
00:15			1	0	1		12:15			4	10	14							3
00:30			0	0	0		12:30			1	2	3							3
00:45			0	1	0	1	12:45			3	10	6	24	9	34				
01:00			0	0	0		13:00			4	4	8							8
01:15			0	0	0		13:15			5	1	6							5
01:30			0	0	0		13:30			2	3	5							5
01:45			0	0	0		13:45			3	14	2	10	5	24				
02:00			0	0	0		14:00			3	4	7							7
02:15			0	0	0		14:15			3	2	5							5
02:30			0	1	1		14:30			5	6	11							11
02:45			0	0	1	0	14:45			0	11	7	19	7	30				
03:00			0	0	0		15:00			6	4	10							8
03:15			1	0	1		15:15			4	4	8							5
03:30			0	0	0		15:30			2	3	5							8
03:45			0	1	0	0	15:45			3	15	5	16	8	31				
04:00			0	0	0		16:00			1	1	2							14
04:15			0	0	0		16:15			7	7	14							8
04:30			2	1	3		16:30			3	5	8							9
04:45			0	2	0	1	16:45			4	15	5	18	9	33				
05:00			2	1	3		17:00			8	3	11							13
05:15			0	0	0		17:15			4	9	9							9
05:30			2	0	2		17:30			1	8	7							40
05:45			3	7	1	2	17:45			2	15	5	25	7	40				
06:00			3	2	5		18:00			2	6	8							7
06:15			2	0	2		18:15			2	5	7							10
06:30			0	1	1		18:30			6	4	10							7
06:45			5	10	2	5	18:45			5	15	2	17	7	32				
07:00			4	3	7		19:00			2	3	5							10
07:15			2	0	2		19:15			1	9	7							3
07:30			8	1	9		19:30			1	6	7							25
07:45			11	25	3	7	19:45			0	4	3	21	3	25				
08:00			2	2	4		20:00			1	1	2							2
08:15			1	2	3		20:15			1	1	2							4
08:30			3	1	4		20:30			1	3	4							3
08:45			3	9	0	5	20:45			0	3	3	8	3	11				
09:00			1	1	2		21:00			1	0	1							3
09:15			2	3	5		21:15			0	3	0							0
09:30			3	1	4		21:30			0	0	0							1
09:45			1	7	1	6	21:45			0	1	1	4	1	5				
10:00			5	1	6		22:00			1	2	3							1
10:15			3	2	5		22:15			0	1	1							1
10:30			1	3	4		22:30			0	1	1							3
10:45			1	10	2	8	22:45			1	2	2	6	3	8				
11:00			2	4	6		23:00			1	3	4							0
11:15			3	1	4		23:15			0	0	0							0
11:30			0	4	4		23:30			0	0	0							3
11:45			2	7	5	14	23:45			1	2	2	5	3	7				
TOTALS			79	50	129		TOTALS			107	173	280							
SPLIT %			61.2%	38.8%	31.5%		SPLIT %			38.2%	61.8%	68.5%							

DAILY TOTALS					NB	SB						EB	WB						Total
					0	0						186	223						409
AM Peak Hour			07:00	11:30	11:30		PM Peak Hour			16:15	17:15	16:15							
AM Pk Volume			25	25	33		PM Pk Volume			22	28	42							
Pk Hr Factor			0.568	0.625	0.589		Pk Hr Factor			0.688	0.778	0.750							
7 - 9 Volume	0	0	34	12	46		4 - 6 Volume	0	0	30	43	73							
7 - 9 Peak Hour			07:00	07:30	07:00		4 - 6 Peak Hour			16:15	16:45	16:15							
7 - 9 Pk Volume	0	0	25	8	32		4 - 6 Pk Volume	0	0	22	25	42							
Pk Hr Factor	0.000	0.000	0.568	0.667	0.571		Pk Hr Factor	0.000	0.000	0.688	0.694	0.750							

VOLUME

Dexter Rd Near 10980 Dexter Rd

Day: Wednesday

Date: 10/9/2019

City: Coulterville

Project #: CA19_7371_001

DAILY TOTALS					NB	SB						EB	WB						Total
					0	0						168	198						366
AM Period	NB	SB	EB	WB	TOTAL		PM Period	NB	SB	EB	WB	TOTAL							TOTAL
00:00			0	0	0		12:00			3	4	7							7
00:15			0	0	0		12:15			4	3	7							7
00:30			0	0	0		12:30			2	3	5							5
00:45			0	0	0		12:45			3	12	5	24						24
01:00			0	0	0		13:00			7	6	13							13
01:15			0	0	0		13:15			4	6	10							10
01:30			0	0	0		13:30			2	3	5							5
01:45			0	0	0		13:45			0	13	1	29						29
02:00			0	0	0		14:00			3	3	6							6
02:15			0	0	0		14:15			2	3	5							5
02:30			0	0	0		14:30			3	1	4							4
02:45			0	1	1	1	1	14:45		1	9	4	20						20
03:00			0	0	0		15:00			2	0	2							2
03:15			0	0	0		15:15			2	6	8							8
03:30			0	0	0		15:30			2	4	6							6
03:45			0	0	0		15:45			2	8	6	24						24
04:00			0	0	0		16:00			3	3	6							6
04:15			0	0	0		16:15			1	9	10							10
04:30			0	0	0		16:30			6	8	14							14
04:45		2	2	0	2	2	16:45			2	12	5	37						37
05:00			1	0	1		17:00			2	6	8							8
05:15			0	0	0		17:15			3	12	15							15
05:30			1	0	1		17:30			4	3	7							7
05:45		3	5	2	5	7	17:45			3	12	5	38						38
06:00			1	1	2		18:00			3	9	12							12
06:15			2	1	3		18:15			3	0	3							3
06:30			3	1	4		18:30			3	4	7							7
06:45			3	9	3	12	18:45			1	10	4	27						27
07:00			4	0	4		19:00			2	3	5							5
07:15			2	0	2		19:15			2	3	5							5
07:30			1	0	1		19:30			0	1	1							1
07:45			7	14	8	15	19:45			0	4	1	12						12
08:00			1	2	3		20:00			0	1	1							1
08:15			3	0	3		20:15			1	1	2							2
08:30			4	0	4		20:30			1	0	1							1
08:45		5	13	3	8	18	20:45			0	2	1	5						5
09:00			2	3	5		21:00			0	2	2							2
09:15			3	1	4		21:15			1	1	2							2
09:30			7	5	12		21:30			0	0	0							0
09:45		4	16	4	8	29	21:45			0	1	0	4						4
10:00			2	5	7		22:00			1	1	2							2
10:15			5	4	9		22:15			1	2	3							3
10:30			1	3	4		22:30			0	0	0							0
10:45			3	11	6	26	22:45			1	3	0	6						6
11:00			2	4	6		23:00			0	0	0							0
11:15			4	3	7		23:15			0	0	0							0
11:30			4	6	10		23:30			0	1	1							1
11:45			1	11	5	28	23:45			1	1	0	2						2
TOTALS			81	57	138		TOTALS			87	141	228							
SPLIT %			58.7%	41.3%	37.7%		SPLIT %			38.2%	61.8%	62.3%							

DAILY TOTALS					NB	SB						EB	WB						Total
					0	0						168	198						366
AM Peak Hour			09:30	09:30	09:30		PM Peak Hour			12:15	16:30	16:30							
AM Pk Volume			18	18	36		PM Pk Volume			16	31	44							
Pk Hr Factor			0.643	0.900	0.750		Pk Hr Factor			0.571	0.646	0.733							
7 - 9 Volume	0	0	27	6	33		4 - 6 Volume	0	0	24	51	75							
7 - 9 Peak Hour			07:45	08:00	07:45		4 - 6 Peak Hour			16:30	16:30	16:30							
7 - 9 Pk Volume	0	0	15	5	18		4 - 6 Pk Volume	0	0	13	31	44							
Pk Hr Factor	0.000	0.000	0.536	0.417	0.563		Pk Hr Factor	0.000	0.000	0.542	0.646	0.733							

VOLUME

Dexter Rd Near 10980 Dexter Rd

Day: Thursday
Date: 10/10/2019City: Coulterville
Project #: CA19_7371_001

DAILY TOTALS					NB	SB						EB	WB						Total
					0	0						187	222						409
AM Period	NB	SB	EB	WB	TOTAL		PM Period	NB	SB	EB	WB	TOTAL							TOTAL
00:00			0	2	2		12:00			2	8	10							
00:15			4	4	8		12:15			6	5	11							
00:30			0	0	0		12:30			4	6	10							
00:45			0	4	1	7	12:45			1	13	5	24	6	37				
01:00			0	0	0		13:00			2	5	7							
01:15			0	0	0		13:15			4	4	8							
01:30			0	0	0		13:30			7	5	12							
01:45			0	1	1	1	13:45			4	17	2	16	6	33				
02:00			0	0	0		14:00			4	5	9							
02:15			0	0	0		14:15			1	10	11							
02:30			0	0	0		14:30			5	8	13							
02:45			0	1	1	1	14:45			3	13	2	25	5	38				
03:00			0	0	0		15:00			2	2	4							
03:15			0	0	0		15:15			6	3	9							
03:30			2	0	2		15:30			4	6	10							
03:45			0	2	0	0	15:45			2	14	3	14	5	28				
04:00			0	0	0		16:00			4	2	6							
04:15			0	0	0		16:15			3	8	11							
04:30			2	0	2		16:30			4	5	9							
04:45			0	2	0	0	16:45			6	17	6	21	12	38				
05:00			0	0	0		17:00			3	5	8							
05:15			0	0	0		17:15			5	5	10							
05:30			1	0	1		17:30			1	4	5							
05:45			4	5	1	1	17:45			0	9	5	19	5	28				
06:00			2	2	4		18:00			3	7	10							
06:15			2	0	2		18:15			0	1	1							
06:30			0	0	0		18:30			4	4	8							
06:45			2	6	1	3	18:45			3	10	3	15	6	25				
07:00			1	1	2		19:00			2	4	6							
07:15			2	0	2		19:15			2	2	4							
07:30			4	0	4		19:30			0	4	4							
07:45			4	11	0	1	19:45			0	4	1	11	1	15				
08:00			3	0	3		20:00			1	2	3							
08:15			4	0	4		20:15			1	1	2							
08:30			1	1	2		20:30			3	2	5							
08:45			4	12	1	2	20:45			0	5	1	6	1	11				
09:00			2	2	4		21:00			1	2	3							
09:15			1	3	4		21:15			0	1	1							
09:30			3	3	6		21:30			0	3	3							
09:45			7	13	2	10	21:45			0	1	0	6	0	7				
10:00			3	4	7		22:00			1	1	2							
10:15			4	3	7		22:15			1	2	3							
10:30			5	4	9		22:30			0	1	1							
10:45			1	13	4	15	22:45			0	2	1	5	1	7				
11:00			2	3	5		23:00			0	2	2							
11:15			2	7	9		23:15			1	1	2							
11:30			6	3	9		23:30			0	0	0							
11:45			3	13	3	16	23:45			0	1	0	3	0	4				
TOTALS			81	57	138		TOTALS			106	165	271							
SPLIT %			58.7%	41.3%	33.7%		SPLIT %			39.1%	60.9%	66.3%							

DAILY TOTALS			NB	SB							EB	WB	Total
			0	0							187	222	409
AM Peak Hour			09:45	11:45	11:45	PM Peak Hour				13:15	13:45	16:15	
AM Pk Volume			19	22	37	PM Pk Volume				19	25	40	
Pk Hr Factor			0.679	0.688	0.841	Pk Hr Factor				0.679	0.625	0.833	
7 - 9 Volume	0	0	23	3	26	4 - 6 Volume		0	0	26	40	66	
7 - 9 Peak Hour			07:30	08:00	07:30	4 - 6 Peak Hour				16:30	16:15	16:15	
7 - 9 Pk Volume	0	0	15	2	15	4 - 6 Pk Volume		0	0	18	24	40	
Pk Hr Factor	0.000	0.000	0.938	0.500	0.938	Pk Hr Factor		0.000	0.000	0.750	0.750	0.833	

VOLUME

Dexter Rd Near 10980 Dexter Rd

Day: Friday

Date: 10/11/2019

City: Coulterville

Project #: CA19_7371_001

DAILY TOTALS					NB	SB	EB					WB	Total
					0	0	154					171	325
AM Period	NB	SB	EB	WB	TOTAL		PM Period	NB	SB	EB	WB	TOTAL	
00:00			0	0	0		12:00			4	1	5	
00:15			0	0	0		12:15			0	4	4	
00:30			0	0	0		12:30			2	4	6	
00:45			0	0	0		12:45			2	8	2	11
01:00			0	0	0		13:00			2	0	2	
01:15			0	0	0		13:15			5	1	6	
01:30			1	0	1		13:30			4	5	9	
01:45			1	2	1	2	13:45			2	13	5	11
02:00			0	0	0		14:00			2	1	3	
02:15			0	0	0		14:15			2	3	5	
02:30			0	0	0		14:30			2	1	3	
02:45			0	0	0		14:45			3	9	5	10
03:00			0	0	0		15:00			2	3	5	
03:15			0	0	0		15:15			4	4	8	
03:30			0	0	0		15:30			3	4	7	
03:45			0	1	1	1	15:45			3	12	4	15
04:00			0	0	0		16:00			0	5	5	
04:15			0	0	0		16:15			3	5	8	
04:30			1	0	1		16:30			3	6	9	
04:45			0	1	0	1	16:45			2	8	3	19
05:00			0	0	0		17:00			4	5	9	
05:15			0	0	0		17:15			3	9	12	
05:30			2	1	3		17:30			2	3	5	
05:45			2	4	2	3	17:45			1	10	4	21
06:00			3	2	5		18:00			2	1	3	
06:15			3	0	3		18:15			3	4	7	
06:30			1	0	1		18:30			0	2	2	
06:45			2	9	2	11	18:45			1	6	5	12
07:00			3	0	3		19:00			2	5	7	
07:15			5	1	6		19:15			1	4	5	
07:30			4	1	5		19:30			2	3	5	
07:45			6	18	6	20	19:45			0	5	4	16
08:00			2	1	3		20:00			0	0	0	
08:15			2	1	3		20:15			1	1	2	
08:30			2	1	3		20:30			0	0	0	
08:45			6	12	8	17	20:45			2	3	2	3
09:00			3	3	6		21:00			2	1	3	
09:15			5	4	9		21:15			0	1	1	
09:30			1	4	5		21:30			0	2	2	
09:45			3	12	5	25	21:45			0	2	1	5
10:00			0	0	0		22:00			0	0	0	
10:15			2	0	2		22:15			0	1	1	
10:30			2	3	5		22:30			0	1	1	
10:45			3	7	4	11	22:45			0	0	2	
11:00			3	5	8		23:00			0	0	0	
11:15			4	2	6		23:15			1	2	3	
11:30			3	6	9		23:30			0	1	1	
11:45			2	12	2	25	23:45			0	1	0	3
TOTALS	77				43	120	TOTALS	77				128	205
SPLIT %	64.2%				35.8%	36.9%	SPLIT %	37.6%				62.4%	63.1%

DAILY TOTALS					NB	SB						EB	WB						Total
					0	0						154	171						325
AM Peak Hour			07:00	10:45	08:45		PM Peak Hour			12:45	16:30	16:30							
AM Pk Volume			18	14	28		PM Pk Volume			13	23	35							
Pk Hr Factor			0.750	0.583	0.778		Pk Hr Factor			0.650	0.639	0.729							
7 - 9 Volume	0	0	30	7	37		4 - 6 Volume	0	0	18	40	58							
7 - 9 Peak Hour			07:00	08:00	07:00		4 - 6 Peak Hour			16:15	16:30	16:30							
7 - 9 Pk Volume	0	0	18	5	20		4 - 6 Pk Volume	0	0	12	23	35							
Pk Hr Factor	0.000	0.000	0.750	0.625	0.833		Pk Hr Factor	0.000	0.000	0.750	0.639	0.729							

VOLUME

Dexter Rd Near 10980 Dexter Rd

Day: Saturday
Date: 10/12/2019City: Coulterville
Project #: CA19_7371_001

DAILY TOTALS					NB	SB						EB	WB						Total
					0	0						204	214						418
AM Period	NB	SB	EB	WB	TOTAL		PM Period	NB	SB	EB	WB	TOTAL							TOTAL
00:00			0	0	0		12:00			4	7	11							11
00:15			0	0	0		12:15			6	3	9							9
00:30			0	0	0		12:30			11	6	17							17
00:45			0	0	0		12:45			4	25	3	19	7	44				
01:00			0	0	0		13:00			10	5	15							15
01:15			0	1	1		13:15			2	3	5							5
01:30			0	0	0		13:30			1	8	9							9
01:45			0	0	0	1	13:45			6	19	3	19	9	38				
02:00			0	0	0		14:00			3	3	6							6
02:15			0	0	0		14:15			2	3	5							5
02:30			0	0	0		14:30			4	4	8							8
02:45			0	0	0		14:45			2	11	4	14	6	25				
03:00			0	0	0		15:00			8	5	13							13
03:15			0	0	0		15:15			3	3	6							6
03:30			0	0	0		15:30			1	4	5							5
03:45			0	0	0		15:45			5	17	5	17	10	34				
04:00			0	0	0		16:00			7	3	10							10
04:15			0	0	0		16:15			4	5	9							9
04:30			0	0	0		16:30			2	6	8							8
04:45			0	0	0		16:45			1	14	3	17	4	31				
05:00			0	0	0		17:00			2	2	4							4
05:15			2	0	2		17:15			3	1	4							4
05:30			1	0	1		17:30			2	3	5							5
05:45			0	3	0	3	17:45			1	8	6	12	7	20				
06:00			0	0	0		18:00			2	5	7							7
06:15			1	0	1		18:15			5	8	13							13
06:30			1	0	1		18:30			6	1	7							7
06:45			2	4	2	2	18:45			1	14	3	17	4	31				
07:00			0	1	1		19:00			6	4	10							10
07:15			2	0	2		19:15			0	1	1							1
07:30			1	0	1		19:30			3	3	6							6
07:45			2	5	0	1	19:45			2	11	4	12	6	23				
08:00			4	1	5		20:00			0	3	3							3
08:15			6	1	7		20:15			3	3	6							6
08:30			1	3	4		20:30			3	4	7							7
08:45			3	14	0	5	20:45			1	7	2	12	3	19				
09:00			3	4	7		21:00			0	1	1							1
09:15			0	3	3		21:15			0	0	0							0
09:30			5	5	10		21:30			1	0	1							1
09:45			3	11	5	17	21:45			1	2	0	1	1	3				
10:00			4	5	9		22:00			0	0	0							0
10:15			6	2	8		22:15			0	0	0							0
10:30			12	7	19		22:30			0	3	3							3
10:45			3	25	5	19	22:45			0	3	6	3	6					
11:00			4	5	9		23:00			1	2	3							3
11:15			3	4	7		23:15			1	3	4							4
11:30			2	2	4		23:30			1	3	4							4
11:45			2	11	4	15	23:45			0	3	0	8	0	11				
TOTALS			73	60	133		TOTALS			131	154	285							285
SPLIT %			54.9%	45.1%	31.8%		SPLIT %			46.0%	54.0%	68.2%							68.2%

DAILY TOTALS					NB	SB						EB	WB						Total
					0	0						204	214						418
AM Peak Hour			09:45	10:30	09:45		PM Peak Hour			12:15	17:30	12:15							
AM Pk Volume			25	21	44		PM Pk Volume			31	22	48							
Pk Hr Factor			0.521	0.750	0.579		Pk Hr Factor			0.705	0.688	0.706							
7 - 9 Volume	0	0	19	6	25		4 - 6 Volume	0	0	22	29	51							
7 - 9 Peak Hour			08:00	07:45	08:00		4 - 6 Peak Hour			16:00	16:00	16:00							
7 - 9 Pk Volume	0	0	14	5	19		4 - 6 Pk Volume	0	0	14	17	31							
Pk Hr Factor	0.000	0.000	0.583	0.417	0.679		Pk Hr Factor	0.000	0.000	0.500	0.708	0.775							

VOLUME

Dexter Rd Near 10980 Dexter Rd

Day: Sunday
Date: 10/13/2019City: Coulterville
Project #: CA19_7371_001

DAILY TOTALS					NB	SB						EB	WB						Total
					0	0						132	140						272
AM Period	NB	SB	EB	WB	TOTAL		PM Period	NB	SB	EB	WB	TOTAL							TOTAL
00:00			0	0	0		12:00			2	4	6							
00:15			1	1	2		12:15			4	5	9							
00:30			1	1	2		12:30			1	5	6							
00:45			0	2	0	2	12:45			3	10	1	15	4	25				
01:00			1	0	1		13:00			2	0	2							
01:15			1	0	1		13:15			4	4	8							
01:30			0	0	0		13:30			1	1	2							
01:45			0	2	0	2	13:45			2	9	3	8	5	17				
02:00			0	0	0		14:00			1	4	5							
02:15			0	0	0		14:15			4	5	9							
02:30			0	1	1		14:30			2	1	3							
02:45			0	0	1	0	14:45			1	8	3	13	4	21				
03:00			0	0	0		15:00			3	3	6							
03:15			0	1	1		15:15			1	3	4							
03:30			0	0	0		15:30			0	0	0							
03:45			0	0	1	0	15:45			1	5	2	8	3	13				
04:00			0	0	0		16:00			3	2	5							
04:15			0	0	0		16:15			2	1	3							
04:30			0	0	0		16:30			4	4	8							
04:45			0	0	0		16:45			1	10	4	11	5	21				
05:00			0	0	0		17:00			4	3	7							
05:15			2	0	2		17:15			2	3	5							
05:30			0	0	0		17:30			3	6	9							
05:45			0	2	0	2	17:45			2	11	2	14	4	25				
06:00			1	0	1		18:00			1	0	1							
06:15			0	0	0		18:15			1	1	2							
06:30			0	0	0		18:30			5	3	8							
06:45			2	3	0	2	18:45			5	12	3	7	8	19				
07:00			0	0	0		19:00			1	2	3							
07:15			5	2	7		19:15			1	5	6							
07:30			2	0	2		19:30			1	2	3							
07:45			3	10	0	2	19:45			0	3	1	10	1	13				
08:00			0	1	1		20:00			0	3	3							
08:15			0	1	1		20:15			0	2	2							
08:30			0	0	0		20:30			1	0	1							
08:45			4	4	3	5	20:45			0	1	0	5	0	6				
09:00			1	1	2		21:00			1	1	2							
09:15			2	0	2		21:15			0	1	1							
09:30			3	2	5		21:30			1	2	3							
09:45			3	9	1	4	21:45			0	2	0	4	0	6				
10:00			3	2	5		22:00			0	3	3							
10:15			5	4	9		22:15			1	1	2							
10:30			1	0	1		22:30			0	1	1							
10:45			4	13	1	7	22:45			0	1	1	6	1	7				
11:00			2	3	5		23:00			0	1	1							
11:15			4	4	8		23:15			0	0	0							
11:30			3	4	7		23:30			0	0	0							
11:45			4	13	5	16	23:45			2	2	0	1	2	3				
TOTALS			58	38	96		TOTALS			74	102	176							
SPLIT %			60.4%	39.6%	35.3%		SPLIT %			42.0%	58.0%	64.7%							

DAILY TOTALS			NB	SB							EB	WB	Total
			0	0							132	140	272
AM Peak Hour			09:30	11:45	11:30	PM Peak Hour				18:00	16:45	16:45	
AM Pk Volume			14	19	31	PM Pk Volume				12	16	26	
Pk Hr Factor			0.700	0.950	0.861	Pk Hr Factor				0.600	0.667	0.722	
7 - 9 Volume	0	0	14	7	21	4 - 6 Volume		0	0	21	25	46	
7 - 9 Peak Hour			07:00	08:00	07:15	4 - 6 Peak Hour				16:15	16:45	16:45	
7 - 9 Pk Volume	0	0	10	5	13	4 - 6 Pk Volume		0	0	11	16	26	
Pk Hr Factor	0.000	0.000	0.500	0.417	0.464	Pk Hr Factor		0.000	0.000	0.688	0.667	0.722	

VOLUME

Dexter Rd Near 10980 Dexter Rd

Day: Monday
Date: 10/14/2019City: Coulterville
Project #: CA19_7371_001

DAILY TOTALS					NB	SB						EB	WB						Total
					0	0						135	134						269
AM Period	NB	SB	EB	WB	TOTAL		PM Period	NB	SB	EB	WB	TOTAL							TOTAL
00:00			0	0	0		12:00			3	3	6							
00:15			0	0	0		12:15			3	0	3							
00:30			0	0	0		12:30			1	2	3							
00:45			0	0	0		12:45			2	9	3	8	5	17				
01:00			0	0	0		13:00			1	3	4							
01:15			0	0	0		13:15			2	0	2							
01:30			0	0	0		13:30			2	0	2							
01:45			0	0	0		13:45			2	7	2	5	4	12				
02:00			0	0	0		14:00			2	5	7							
02:15			0	0	0		14:15			4	3	7							
02:30			0	0	0		14:30			1	1	2							
02:45			0	0	0		14:45			1	8	1	10	2	18				
03:00			0	0	0		15:00			4	5	9							
03:15			0	0	0		15:15			2	5	7							
03:30			0	0	0		15:30			1	2	3							
03:45			0	0	0		15:45			1	8	3	15	4	23				
04:00			0	0	0		16:00			2	3	5							
04:15			0	0	0		16:15			4	5	9							
04:30			2	0	2		16:30			7	4	11							
04:45			0	2	0	2	16:45			1	14	2	14	3	28				
05:00			1	0	1		17:00			1	7	8							
05:15			0	0	0		17:15			0	6	6							
05:30			2	2	4		17:30			1	1	2							
05:45			3	6	4	9	17:45			2	4	3	15	3	19				
06:00			4	2	6		18:00			1	4	5							
06:15			2	0	2		18:15			0	3	3							
06:30			0	1	1		18:30			2	2	4							
06:45			2	8	3	12	18:45			0	3	4	13	4	16				
07:00			2	2	4		19:00			1	1	2							
07:15			2	0	2		19:15			0	2	2							
07:30			5	0	5		19:30			0	4	4							
07:45			8	17	8	19	19:45			0	1	2	9	2	10				
08:00			4	0	4		20:00			0	2	2							
08:15			0	1	1		20:15			0	1	1							
08:30			1	0	1		20:30			0	1	1							
08:45			5	10	7	13	20:45			0	0	4		0	4				
09:00			4	4	8		21:00			1	1	2							
09:15			2	1	3		21:15			1	2	3							
09:30			0	4	4		21:30			3	1	4							
09:45			0	6	0	9	21:45			0	5	1	5	1	10				
10:00			5	0	5		22:00			1	2	3							
10:15			3	1	4		22:15			0	1	1							
10:30			3	0	3		22:30			0	0	0							
10:45			0	11	3	4	22:45			0	1	0	3	0	4				
11:00			5	4	9		23:00			0	0	0							
11:15			3	1	4		23:15			0	1	1							
11:30			1	0	1		23:30			0	0	0							
11:45			4	13	6	20	23:45			2	2	0	1	2	3				
TOTALS			73	32	105		TOTALS			62	102	164							
SPLIT %			69.5%	30.5%	39.0%		SPLIT %			37.8%	62.2%	61.0%							

DAILY TOTALS					NB	SB						EB	WB						Total
					0	0						135	134						269
AM Peak Hour			07:15	08:45	08:45		PM Peak Hour			15:45	16:30	16:15							
AM Pk Volume			19	11	22		PM Pk Volume			14	19	31							
Pk Hr Factor			0.594	0.688	0.688		Pk Hr Factor			0.500	0.679	0.705							
7 - 9 Volume	0	0	27	5	32		4 - 6 Volume	0	0	18	29	47							
7 - 9 Peak Hour			07:15	08:00	07:00		4 - 6 Peak Hour			16:00	16:30	16:15							
7 - 9 Pk Volume	0	0	19	3	19		4 - 6 Pk Volume	0	0	14	19	31							
Pk Hr Factor	0.000	0.000	0.594	0.375	0.594		Pk Hr Factor	0.000	0.000	0.500	0.679	0.705							

Appendix C

Year-Month	Forest Visit Arrivals
2018-04	30
2018-05	32
2018-06	39
2018-07	24
2018-08	38
2018-09	56
2018-10	52
2018-11	22
2018-12	24
2019-01	22
2019-02	21
2019-03	26
2019-04	12
2019-05	13
2019-06	22
2019-07	24

Note:

Data pulled Sep 6, 2019. All forest visit arrival starting April 2018 excluding arrivals where deal_forest is undefined (~3% of sample).

forest_visit_arrival_date	Month	Day	Day of the week	Year	Time	Hour	Min	deal_forest	count
7/27/2019 11:45	July	27	Saturday	2019	11:45	11	45	Point Arena	1
7/27/2019 12:03	July	27	Saturday	2019	12:03	12	3	Point Arena	1
6/16/2018 9:33	June	16	Saturday	2018	9:33	9	33	Point Arena	1
2/16/2019 11:44	February	16	Saturday	2019	11:44	11	44	Point Arena	1
2/2/2019 11:00	February	2	Saturday	2019	11:00	11	0	Point Arena	1
6/23/2018 15:29	June	23	Saturday	2018	15:29	15	29	Point Arena	1
9/15/2018 13:50	September	15	Saturday	2018	13:50	13	50	Point Arena	1
5/4/2019 13:09	May	4	Saturday	2019	13:09	13	9	Point Arena	1
10/25/2018 15:17	October	25	Thursday	2018	15:17	15	17	Point Arena	1
10/27/2018 14:09	October	27	Saturday	2018	14:09	14	9	Point Arena	1
6/24/2018 10:06	June	24	Sunday	2018	10:06	10	6	Point Arena	1
1/6/2019 11:29	January	6	Sunday	2019	11:29	11	29	Point Arena	1
8/3/2019 13:25	August	3	Saturday	2019	13:25	13	25	Point Arena	1
3/23/2019 10:05	March	23	Saturday	2019	10:05	10	5	Point Arena	1
4/15/2018 11:44	April	15	Sunday	2018	11:44	11	44	Point Arena	1
8/19/2018 10:52	August	19	Sunday	2018	10:52	10	52	Point Arena	1
6/24/2018 10:01	June	24	Sunday	2018	10:01	10	1	Point Arena	1
10/21/2018 11:52	October	21	Sunday	2018	11:52	11	52	Point Arena	1
6/19/2019 9:46	June	19	Wednesday	2019	9:46	9	46	Point Arena	1
12/30/2018 11:17	December	30	Sunday	2018	11:17	11	17	Point Arena	1
8/4/2018 11:05	August	4	Saturday	2018	11:05	11	5	Point Arena	1
5/8/2018 11:14	May	8	Tuesday	2018	11:14	11	14	Point Arena	1
6/17/2019 11:38	June	17	Monday	2019	11:38	11	38	Point Arena	1
10/14/2018 12:35	October	14	Sunday	2018	12:35	12	35	Point Arena	1
7/15/2019 14:14	July	15	Monday	2019	14:14	14	14	Point Arena	1
10/4/2018 8:53	October	4	Thursday	2018	8:53	8	53	Point Arena	1
9/30/2018 13:36	September	30	Sunday	2018	13:36	13	36	Point Arena	1
2/23/2019 14:02	February	23	Saturday	2019	14:02	14	2	Point Arena	1
2/9/2019 13:49	February	9	Saturday	2019	13:49	13	49	Point Arena	1
8/5/2018 11:56	August	5	Sunday	2018	11:56	11	56	Point Arena	1
8/17/2019 14:25	August	17	Saturday	2019	14:25	14	25	Point Arena	1

5/25/2019 9:50	May	25	Saturday	2019	9:50	9	50	Point Arena	1
9/23/2018 12:25	September	23	Sunday	2018	12:25	12	25	Point Arena	1
8/25/2018 13:50	August	25	Saturday	2018	13:50	13	50	Point Arena	1
5/22/2018 13:41	May	22	Tuesday	2018	13:41	13	41	Point Arena	1
10/13/2018 14:32	October	13	Saturday	2018	14:32	14	32	Point Arena	1
2/14/2019 11:47	February	14	Thursday	2019	11:47	11	47	Point Arena	1
8/4/2018 8:47	August	4	Saturday	2018	8:47	8	47	Point Arena	1
5/20/2018 9:29	May	20	Sunday	2018	9:29	9	29	Point Arena	1
3/31/2019 13:04	March	31	Sunday	2019	13:04	13	4	Point Arena	1
10/6/2018 13:53	October	6	Saturday	2018	13:53	13	53	Point Arena	1
6/2/2019 12:54	June	2	Sunday	2019	12:54	12	54	Point Arena	1
2/9/2019 11:06	February	9	Saturday	2019	11:06	11	6	Point Arena	1
9/2/2018 11:49	September	2	Sunday	2018	11:49	11	49	Point Arena	1
11/3/2018 12:43	November	3	Saturday	2018	12:43	12	43	Point Arena	1
6/24/2018 9:45	June	24	Sunday	2018	9:45	9	45	Point Arena	1
6/2/2018 10:58	June	2	Saturday	2018	10:58	10	58	Point Arena	1
4/28/2018 12:11	April	28	Saturday	2018	12:11	12	11	Point Arena	1
12/2/2018 10:35	December	2	Sunday	2018	10:35	10	35	Point Arena	1
11/24/2018 15:47	November	24	Saturday	2018	15:47	15	47	Point Arena	1
2/9/2019 13:32	February	9	Saturday	2019	13:32	13	32	Point Arena	1
4/14/2018 12:03	April	14	Saturday	2018	12:03	12	3	Point Arena	1
4/27/2019 10:40	April	27	Saturday	2019	10:40	10	40	Point Arena	1
2/2/2019 14:17	February	2	Saturday	2019	14:17	14	17	Point Arena	1
10/6/2018 11:45	October	6	Saturday	2018	11:45	11	45	Point Arena	1
7/14/2019 14:15	July	14	Sunday	2019	14:15	14	15	Point Arena	1
10/2/2018 13:30	October	2	Tuesday	2018	13:30	13	30	Point Arena	1
5/8/2018 9:49	May	8	Tuesday	2018	9:49	9	49	Point Arena	1
10/27/2018 10:06	October	27	Saturday	2018	10:06	10	6	Point Arena	1
4/29/2018 9:51	April	29	Sunday	2018	9:51	9	51	Point Arena	1
4/30/2018 11:44	April	30	Monday	2018	11:44	11	44	Point Arena	1
1/19/2019 13:21	January	19	Saturday	2019	13:21	13	21	Point Arena	1
8/30/2018 9:20	August	30	Thursday	2018	9:20	9	20	Point Arena	1
1/26/2019 12:02	January	26	Saturday	2019	12:02	12	2	Point Arena	1
9/22/2018 11:35	September	22	Saturday	2018	11:35	11	35	Point Arena	1
6/29/2019 12:41	June	29	Saturday	2019	12:41	12	41	Point Arena	1

6/10/2018 9:56	June	10	Sunday	2018	9:56	9	56	Point Arena	1
12/30/2018 15:41	December	30	Sunday	2018	15:41	15	41	Point Arena	1
5/15/2018 11:55	May	15	Tuesday	2018	11:55	11	55	Point Arena	1
9/14/2018 8:18	September	14	Friday	2018	8:18	8	18	Point Arena	1
8/3/2019 14:34	August	3	Saturday	2019	14:34	14	34	Point Arena	1
8/5/2018 13:10	August	5	Sunday	2018	13:10	13	10	Point Arena	1
8/18/2018 13:31	August	18	Saturday	2018	13:31	13	31	Point Arena	1
5/19/2018 14:47	May	19	Saturday	2018	14:47	14	47	Point Arena	1
12/1/2018 10:57	December	1	Saturday	2018	10:57	10	57	Point Arena	1
6/24/2018 11:54	June	24	Sunday	2018	11:54	11	54	Point Arena	1
3/9/2019 12:56	March	9	Saturday	2019	12:56	12	56	Point Arena	1
9/23/2018 14:10	September	23	Sunday	2018	14:10	14	10	Point Arena	1
9/22/2018 11:59	September	22	Saturday	2018	11:59	11	59	Point Arena	1
7/17/2018 10:15	July	17	Tuesday	2018	10:15	10	15	Point Arena	1
6/9/2018 13:34	June	9	Saturday	2018	13:34	13	34	Point Arena	1
8/19/2018 10:55	August	19	Sunday	2018	10:55	10	55	Point Arena	1
10/15/2018 9:07	October	15	Monday	2018	9:07	9	7	Point Arena	1
5/5/2019 13:10	May	5	Sunday	2019	13:10	13	10	Point Arena	1
8/26/2018 11:09	August	26	Sunday	2018	11:09	11	9	Point Arena	1
9/23/2018 10:05	September	23	Sunday	2018	10:05	10	5	Point Arena	1
6/24/2018 10:22	June	24	Sunday	2018	10:22	10	22	Point Arena	1
5/21/2018 11:54	May	21	Monday	2018	11:54	11	54	Point Arena	1
3/6/2019 21:29	March	6	Wednesday	2019	21:29	21	29	Point Arena	1
6/17/2018 13:39	June	17	Sunday	2018	13:39	13	39	Point Arena	1
12/30/2018 10:39	December	30	Sunday	2018	10:39	10	39	Point Arena	1
7/28/2018 14:16	July	28	Saturday	2018	14:16	14	16	Point Arena	1
11/17/2018 13:58	November	17	Saturday	2018	13:58	13	58	Point Arena	1
3/2/2019 9:50	March	2	Saturday	2019	9:50	9	50	Point Arena	1
6/10/2018 14:26	June	10	Sunday	2018	14:26	14	26	Point Arena	1
10/21/2018 3:27	October	21	Sunday	2018	3:27	3	27	Point Arena	1
6/28/2019 14:29	June	28	Friday	2019	14:29	14	29	Point Arena	1
2/24/2019 13:53	February	24	Sunday	2019	13:53	13	53	Point Arena	1
9/30/2018 14:35	September	30	Sunday	2018	14:35	14	35	Point Arena	1
4/14/2018 10:04	April	14	Saturday	2018	10:04	10	4	Point Arena	1
5/27/2018 9:57	May	27	Sunday	2018	9:57	9	57	Point Arena	1

6/23/2018 8:46	June	23	Saturday	2018	8:46	8	46	Point Arena	1
5/27/2018 14:59	May	27	Sunday	2018	14:59	14	59	Point Arena	1
10/20/2018 12:02	October	20	Saturday	2018	12:02	12	2	Point Arena	1
5/19/2019 9:25	May	19	Sunday	2019	9:25	9	25	Point Arena	1
8/31/2019 8:57	August	31	Saturday	2019	8:57	8	57	Point Arena	1
8/4/2018 15:04	August	4	Saturday	2018	15:04	15	4	Point Arena	1
5/15/2018 11:47	May	15	Tuesday	2018	11:47	11	47	Point Arena	1
10/17/2018 16:42	October	17	Wednesday	2018	16:42	16	42	Point Arena	1
9/29/2018 10:02	September	29	Saturday	2018	10:02	10	2	Point Arena	1
12/1/2018 15:25	December	1	Saturday	2018	15:25	15	25	Point Arena	1
4/14/2018 11:55	April	14	Saturday	2018	11:55	11	55	Point Arena	1
9/22/2018 16:09	September	22	Saturday	2018	16:09	16	9	Point Arena	1
5/21/2018 9:56	May	21	Monday	2018	9:56	9	56	Point Arena	1
4/27/2019 13:03	April	27	Saturday	2019	13:03	13	3	Point Arena	1
10/31/2018 10:01	October	31	Wednesday	2018	10:01	10	1	Point Arena	1
8/16/2019 14:31	August	16	Friday	2019	14:31	14	31	Point Arena	1
8/26/2018 13:24	August	26	Sunday	2018	13:24	13	24	Point Arena	1
1/28/2019 16:00	January	28	Monday	2019	16:00	16	0	Point Arena	1
8/17/2019 8:46	August	17	Saturday	2019	8:46	8	46	Point Arena	1
7/20/2019 14:05	July	20	Saturday	2019	14:05	14	5	Point Arena	1
10/29/2018 13:54	October	29	Monday	2018	13:54	13	54	Point Arena	1
4/14/2019 10:03	April	14	Sunday	2019	10:03	10	3	Point Arena	1
10/20/2018 13:59	October	20	Saturday	2018	13:59	13	59	Point Arena	1
9/15/2018 10:06	September	15	Saturday	2018	10:06	10	6	Point Arena	1
9/16/2018 11:49	September	16	Sunday	2018	11:49	11	49	Point Arena	1
6/2/2019 12:56	June	2	Sunday	2019	12:56	12	56	Point Arena	1
8/25/2018 14:51	August	25	Saturday	2018	14:51	14	51	Point Arena	1
7/18/2019 11:20	July	18	Thursday	2019	11:20	11	20	Point Arena	1
7/22/2018 14:08	July	22	Sunday	2018	14:08	14	8	Point Arena	1
5/6/2018 9:44	May	6	Sunday	2018	9:44	9	44	Point Arena	1
4/6/2019 12:43	April	6	Saturday	2019	12:43	12	43	Point Arena	1
2/10/2019 14:07	February	10	Sunday	2019	14:07	14	7	Point Arena	1
6/16/2018 11:52	June	16	Saturday	2018	11:52	11	52	Point Arena	1
10/7/2018 11:32	October	7	Sunday	2018	11:32	11	32	Point Arena	1
8/3/2019 9:05	August	3	Saturday	2019	9:05	9	5	Point Arena	1

9/8/2018 9:50	September	8	Saturday	2018	9:50	9	50 Point Arena	1
1/19/2019 11:47	January	19	Saturday	2019	11:47	11	47 Point Arena	1
5/26/2018 10:04	May	26	Saturday	2018	10:04	10	4 Point Arena	1
2/23/2019 10:53	February	23	Saturday	2019	10:53	10	53 Point Arena	1
6/17/2018 13:42	June	17	Sunday	2018	13:42	13	42 Point Arena	1
11/17/2018 11:29	November	17	Saturday	2018	11:29	11	29 Point Arena	1
8/25/2018 8:47	August	25	Saturday	2018	8:47	8	47 Point Arena	1
9/16/2018 11:42	September	16	Sunday	2018	11:42	11	42 Point Arena	1
6/24/2018 10:02	June	24	Sunday	2018	10:02	10	2 Point Arena	1
3/17/2019 9:51	March	17	Sunday	2019	9:51	9	51 Point Arena	1
9/21/2018 12:46	September	21	Friday	2018	12:46	12	46 Point Arena	1
10/14/2018 11:53	October	14	Sunday	2018	11:53	11	53 Point Arena	1
3/17/2019 12:45	March	17	Sunday	2019	12:45	12	45 Point Arena	1
6/2/2018 15:24	June	2	Saturday	2018	15:24	15	24 Point Arena	1
11/1/2018 20:36	November	1	Thursday	2018	20:36	20	36 Point Arena	1
7/20/2019 13:44	July	20	Saturday	2019	13:44	13	44 Point Arena	1
7/22/2018 9:45	July	22	Sunday	2018	9:45	9	45 Point Arena	1
3/17/2019 10:17	March	17	Sunday	2019	10:17	10	17 Point Arena	1
2/9/2019 11:12	February	9	Saturday	2019	11:12	11	12 Point Arena	1
8/12/2018 13:05	August	12	Sunday	2018	13:05	13	5 Point Arena	1
8/23/2019 13:50	August	23	Friday	2019	13:50	13	50 Point Arena	1
5/20/2018 8:05	May	20	Sunday	2018	8:05	8	5 Point Arena	1
3/17/2019 13:46	March	17	Sunday	2019	13:46	13	46 Point Arena	1
8/17/2019 12:52	August	17	Saturday	2019	12:52	12	52 Point Arena	1
4/28/2019 9:48	April	28	Sunday	2019	9:48	9	48 Point Arena	1
2/17/2019 10:46	February	17	Sunday	2019	10:46	10	46 Point Arena	1
5/25/2019 13:03	May	25	Saturday	2019	13:03	13	3 Point Arena	1
9/29/2018 10:02	September	29	Saturday	2018	10:02	10	2 Point Arena	1
4/28/2018 9:57	April	28	Saturday	2018	9:57	9	57 Point Arena	1
8/17/2019 11:05	August	17	Saturday	2019	11:05	11	5 Point Arena	1
11/18/2018 13:54	November	18	Sunday	2018	13:54	13	54 Point Arena	1
10/21/2018 10:35	October	21	Sunday	2018	10:35	10	35 Point Arena	1
6/10/2018 9:41	June	10	Sunday	2018	9:41	9	41 Point Arena	1
8/26/2018 11:09	August	26	Sunday	2018	11:09	11	9 Point Arena	1
12/1/2018 10:28	December	1	Saturday	2018	10:28	10	28 Point Arena	1

9/29/2018 12:30	September	29	Saturday	2018	12:30	12	30	Point Arena	1
8/17/2019 12:40	August	17	Saturday	2019	12:40	12	40	Point Arena	1
7/28/2018 11:07	July	28	Saturday	2018	11:07	11	7	Point Arena	1
12/2/2018 13:34	December	2	Sunday	2018	13:34	13	34	Point Arena	1
7/13/2019 9:57	July	13	Saturday	2019	9:57	9	57	Point Arena	1
1/13/2019 10:59	January	13	Sunday	2019	10:59	10	59	Point Arena	1
7/14/2019 11:22	July	14	Sunday	2019	11:22	11	22	Point Arena	1
9/2/2018 10:33	September	2	Sunday	2018	10:33	10	33	Point Arena	1
6/1/2019 10:27	June	1	Saturday	2019	10:27	10	27	Point Arena	1
6/29/2019 13:06	June	29	Saturday	2019	13:06	13	6	Point Arena	1
9/29/2018 13:59	September	29	Saturday	2018	13:59	13	59	Point Arena	1
11/5/2018 13:51	November	5	Monday	2018	13:51	13	51	Point Arena	1
8/11/2018 15:10	August	11	Saturday	2018	15:10	15	10	Point Arena	1
4/9/2018 13:38	April	9	Monday	2018	13:38	13	38	Point Arena	1
9/30/2018 9:52	September	30	Sunday	2018	9:52	9	52	Point Arena	1
9/30/2018 12:06	September	30	Sunday	2018	12:06	12	6	Point Arena	1
2/9/2019 13:44	February	9	Saturday	2019	13:44	13	44	Point Arena	1
7/27/2019 11:13	July	27	Saturday	2019	11:13	11	13	Point Arena	1
7/22/2018 14:14	July	22	Sunday	2018	14:14	14	14	Point Arena	1
5/29/2018 9:55	May	29	Tuesday	2018	9:55	9	55	Point Arena	1
6/24/2018 11:56	June	24	Sunday	2018	11:56	11	56	Point Arena	1
5/26/2018 13:55	May	26	Saturday	2018	13:55	13	55	Point Arena	1
2/2/2019 14:03	February	2	Saturday	2019	14:03	14	3	Point Arena	1
3/24/2019 12:51	March	24	Sunday	2019	12:51	12	51	Point Arena	1
4/28/2019 13:10	April	28	Sunday	2019	13:10	13	10	Point Arena	1
4/15/2018 11:42	April	15	Sunday	2018	11:42	11	42	Point Arena	1
4/14/2019 13:44	April	14	Sunday	2019	13:44	13	44	Point Arena	1
5/28/2018 9:42	May	28	Monday	2018	9:42	9	42	Point Arena	1
7/28/2018 8:53	July	28	Saturday	2018	8:53	8	53	Point Arena	1
11/21/2018 11:36	November	21	Wednesday	2018	11:36	11	36	Point Arena	1
9/29/2018 14:05	September	29	Saturday	2018	14:05	14	5	Point Arena	1
3/23/2019 13:02	March	23	Saturday	2019	13:02	13	2	Point Arena	1
11/11/2018 11:40	November	11	Sunday	2018	11:40	11	40	Point Arena	1
10/8/2018 9:18	October	8	Monday	2018	9:18	9	18	Point Arena	1
8/4/2018 13:28	August	4	Saturday	2018	13:28	13	28	Point Arena	1

9/30/2018 13:56	September	30	Sunday	2018	13:56	13	56	Point Arena	1
7/6/2019 9:17	July	6	Saturday	2019	9:17	9	17	Point Arena	1
10/20/2018 11:59	October	20	Saturday	2018	11:59	11	59	Point Arena	1
6/9/2018 10:58	June	9	Saturday	2018	10:58	10	58	Point Arena	1
9/2/2018 12:00	September	2	Sunday	2018	12:00	12	0	Point Arena	1
10/7/2018 16:02	October	7	Sunday	2018	16:02	16	2	Point Arena	1
3/23/2019 14:06	March	23	Saturday	2019	14:06	14	6	Point Arena	1
7/21/2019 11:54	July	21	Sunday	2019	11:54	11	54	Point Arena	1
6/16/2018 11:59	June	16	Saturday	2018	11:59	11	59	Point Arena	1
8/25/2018 11:07	August	25	Saturday	2018	11:07	11	7	Point Arena	1
12/13/2018 11:12	December	13	Thursday	2018	11:12	11	12	Point Arena	1
8/11/2018 10:47	August	11	Saturday	2018	10:47	10	47	Point Arena	1
11/24/2018 14:10	November	24	Saturday	2018	14:10	14	10	Point Arena	1
11/18/2018 12:03	November	18	Sunday	2018	12:03	12	3	Point Arena	1
9/9/2018 12:07	September	9	Sunday	2018	12:07	12	7	Point Arena	1
6/2/2019 13:09	June	2	Sunday	2019	13:09	13	9	Point Arena	1
6/8/2019 10:07	June	8	Saturday	2019	10:07	10	7	Point Arena	1
7/21/2018 11:14	July	21	Saturday	2018	11:14	11	14	Point Arena	1
8/2/2019 14:56	August	2	Friday	2019	14:56	14	56	Point Arena	1
8/18/2018 9:05	August	18	Saturday	2018	9:05	9	5	Point Arena	1
4/10/2018 12:25	April	10	Tuesday	2018	12:25	12	25	Point Arena	1
2/17/2019 11:09	February	17	Sunday	2019	11:09	11	9	Point Arena	1
6/24/2018 11:53	June	24	Sunday	2018	11:53	11	53	Point Arena	1
5/20/2018 7:55	May	20	Sunday	2018	7:55	7	55	Point Arena	1
5/22/2018 13:52	May	22	Tuesday	2018	13:52	13	52	Point Arena	1
6/16/2018 9:34	June	16	Saturday	2018	9:34	9	34	Point Arena	1
9/2/2018 14:18	September	2	Sunday	2018	14:18	14	18	Point Arena	1
7/29/2018 13:20	July	29	Sunday	2018	13:20	13	20	Point Arena	1
6/21/2019 13:57	June	21	Friday	2019	13:57	13	57	Point Arena	1
5/20/2018 9:56	May	20	Sunday	2018	9:56	9	56	Point Arena	1
11/11/2018 13:56	November	11	Sunday	2018	13:56	13	56	Point Arena	1
11/11/2018 14:12	November	11	Sunday	2018	14:12	14	12	Point Arena	1
10/27/2018 15:41	October	27	Saturday	2018	15:41	15	41	Point Arena	1
12/11/2018 15:06	December	11	Tuesday	2018	15:06	15	6	Point Arena	1
3/23/2019 9:36	March	23	Saturday	2019	9:36	9	36	Point Arena	1

1/6/2019 10:10	January	6 Sunday	2019 10:10	10	10 Point Arena	1
4/8/2018 10:02	April	8 Sunday	2018 10:02	10	2 Point Arena	1
10/5/2018 8:14	October	5 Friday	2018 8:14	8	14 Point Arena	1
5/7/2018 10:56	May	7 Monday	2018 10:56	10	56 Point Arena	1
9/23/2018 12:28	September	23 Sunday	2018 12:28	12	28 Point Arena	1
1/27/2019 11:09	January	27 Sunday	2019 11:09	11	9 Point Arena	1
2/24/2019 11:18	February	24 Sunday	2019 11:18	11	18 Point Arena	1
6/22/2019 13:45	June	22 Saturday	2019 13:45	13	45 Point Arena	1
8/27/2018 19:31	August	27 Monday	2018 19:31	19	31 Point Arena	1
12/15/2018 10:45	December	15 Saturday	2018 10:45	10	45 Point Arena	1
5/6/2018 13:52	May	6 Sunday	2018 13:52	13	52 Point Arena	1
12/6/2018 14:41	December	6 Thursday	2018 14:41	14	41 Point Arena	1
9/28/2018 11:10	September	28 Friday	2018 11:10	11	10 Point Arena	1
9/23/2018 10:14	September	23 Sunday	2018 10:14	10	14 Point Arena	1
4/20/2019 9:47	April	20 Saturday	2019 9:47	9	47 Point Arena	1
5/11/2019 14:06	May	11 Saturday	2019 14:06	14	6 Point Arena	1
6/23/2018 15:59	June	23 Saturday	2018 15:59	15	59 Point Arena	1
6/17/2018 9:51	June	17 Sunday	2018 9:51	9	51 Point Arena	1
11/18/2018 13:46	November	18 Sunday	2018 13:46	13	46 Point Arena	1
1/9/2019 14:21	January	9 Wednesday	2019 14:21	14	21 Point Arena	1
7/6/2019 11:24	July	6 Saturday	2019 11:24	11	24 Point Arena	1
1/27/2019 10:58	January	27 Sunday	2019 10:58	10	58 Point Arena	1
5/15/2018 11:58	May	15 Tuesday	2018 11:58	11	58 Point Arena	1
10/18/2018 9:13	October	18 Thursday	2018 9:13	9	13 Point Arena	1
12/29/2018 11:37	December	29 Saturday	2018 11:37	11	37 Point Arena	1
7/28/2018 15:19	July	28 Saturday	2018 15:19	15	19 Point Arena	1
9/18/2018 7:25	September	18 Tuesday	2018 7:25	7	25 Point Arena	1
2/23/2019 10:42	February	23 Saturday	2019 10:42	10	42 Point Arena	1
9/13/2018 8:34	September	13 Thursday	2018 8:34	8	34 Point Arena	1
9/20/2018 10:19	September	20 Thursday	2018 10:19	10	19 Point Arena	1
10/19/2018 13:22	October	19 Friday	2018 13:22	13	22 Point Arena	1
10/4/2018 13:18	October	4 Thursday	2018 13:18	13	18 Point Arena	1
6/2/2018 13:34	June	2 Saturday	2018 13:34	13	34 Point Arena	1
4/28/2018 12:11	April	28 Saturday	2018 12:11	12	11 Point Arena	1
12/29/2018 13:56	December	29 Saturday	2018 13:56	13	56 Point Arena	1

7/1/2018 9:37 July	1 Sunday	2018 9:37	9	37 Point Arena	1
9/16/2018 14:20 September	16 Sunday	2018 14:20	14	20 Point Arena	1
7/20/2019 8:46 July	20 Saturday	2019 8:46	8	46 Point Arena	1
4/13/2019 12:26 April	13 Saturday	2019 12:26	12	26 Point Arena	1
11/17/2018 13:57 November	17 Saturday	2018 13:57	13	57 Point Arena	1
4/29/2018 13:56 April	29 Sunday	2018 13:56	13	56 Point Arena	1
5/12/2019 9:40 May	12 Sunday	2019 9:40	9	40 Point Arena	1
4/28/2018 10:08 April	28 Saturday	2018 10:08	10	8 Point Arena	1
9/9/2018 10:31 September	9 Sunday	2018 10:31	10	31 Point Arena	1
9/28/2018 11:05 September	28 Friday	2018 11:05	11	5 Point Arena	1
9/8/2018 11:55 September	8 Saturday	2018 11:55	11	55 Point Arena	1
9/25/2018 12:58 September	25 Tuesday	2018 12:58	12	58 Point Arena	1
4/28/2018 9:55 April	28 Saturday	2018 9:55	9	55 Point Arena	1
8/31/2019 9:16 August	31 Saturday	2019 9:16	9	16 Point Arena	1
8/19/2018 8:47 August	19 Sunday	2018 8:47	8	47 Point Arena	1
11/18/2018 10:58 November	18 Sunday	2018 10:58	10	58 Point Arena	1
9/21/2018 9:08 September	21 Friday	2018 9:08	9	8 Point Arena	1
1/13/2019 14:21 January	13 Sunday	2019 14:21	14	21 Point Arena	1
9/5/2018 12:22 September	5 Wednesday	2018 12:22	12	22 Point Arena	1
7/12/2019 10:36 July	12 Friday	2019 10:36	10	36 Point Arena	1
8/28/2019 15:12 August	28 Wednesday	2019 15:12	15	12 Point Arena	1
3/24/2019 13:07 March	24 Sunday	2019 13:07	13	7 Point Arena	1
8/3/2019 9:15 August	3 Saturday	2019 9:15	9	15 Point Arena	1
8/23/2019 14:13 August	23 Friday	2019 14:13	14	13 Point Arena	1
6/29/2019 10:27 June	29 Saturday	2019 10:27	10	27 Point Arena	1
8/4/2019 9:07 August	4 Sunday	2019 9:07	9	7 Point Arena	1
8/12/2019 13:46 August	12 Monday	2019 13:46	13	46 Point Arena	1
6/29/2019 10:53 June	29 Saturday	2019 10:53	10	53 Point Arena	1
11/17/2018 13:52 November	17 Saturday	2018 13:52	13	52 Point Arena	1
3/2/2019 14:05 March	2 Saturday	2019 14:05	14	5 Point Arena	1
4/22/2018 9:47 April	22 Sunday	2018 9:47	9	47 Point Arena	1
9/21/2018 9:31 September	21 Friday	2018 9:31	9	31 Point Arena	1
12/14/2018 14:44 December	14 Friday	2018 14:44	14	44 Point Arena	1
6/17/2019 12:59 June	17 Monday	2019 12:59	12	59 Point Arena	1
9/9/2018 12:10 September	9 Sunday	2018 12:10	12	10 Point Arena	1

5/3/2018 11:20	May	3 Thursday	2018 11:20	11	20 Point Arena	1
10/14/2018 9:41	October	14 Sunday	2018 9:41	9	41 Point Arena	1
6/19/2019 14:08	June	19 Wednesday	2019 14:08	14	8 Point Arena	1
1/6/2019 11:34	January	6 Sunday	2019 11:34	11	34 Point Arena	1
12/26/2018 13:09	December	26 Wednesday	2018 13:09	13	9 Point Arena	1
11/15/2018 17:12	November	15 Thursday	2018 17:12	17	12 Point Arena	1
5/27/2018 14:52	May	27 Sunday	2018 14:52	14	52 Point Arena	1
3/9/2019 13:51	March	9 Saturday	2019 13:51	13	51 Point Arena	1
9/9/2018 14:50	September	9 Sunday	2018 14:50	14	50 Point Arena	1
12/1/2018 14:04	December	1 Saturday	2018 14:04	14	4 Point Arena	1
7/8/2019 11:23	July	8 Monday	2019 11:23	11	23 Point Arena	1
7/29/2019 10:04	July	29 Monday	2019 10:04	10	4 Point Arena	1
8/10/2019 11:36	August	10 Saturday	2019 11:36	11	36 Point Arena	1
7/22/2019 15:06	July	22 Monday	2019 15:06	15	6 Point Arena	1
6/17/2018 12:16	June	17 Sunday	2018 12:16	12	16 Point Arena	1
10/28/2018 11:33	October	28 Sunday	2018 11:33	11	33 Point Arena	1
8/13/2019 11:39	August	13 Tuesday	2019 11:39	11	39 Point Arena	1
8/5/2018 13:13	August	5 Sunday	2018 13:13	13	13 Point Arena	1
6/2/2019 13:06	June	2 Sunday	2019 13:06	13	6 Point Arena	1
7/15/2018 10:05	July	15 Sunday	2018 10:05	10	5 Point Arena	1
3/31/2019 9:53	March	31 Sunday	2019 9:53	9	53 Point Arena	1
3/24/2019 10:09	March	24 Sunday	2019 10:09	10	9 Point Arena	1
9/21/2018 14:01	September	21 Friday	2018 14:01	14	1 Point Arena	1
5/4/2019 12:33	May	4 Saturday	2019 12:33	12	33 Point Arena	1
5/26/2019 13:28	May	26 Sunday	2019 13:28	13	28 Point Arena	1
1/12/2019 13:59	January	12 Saturday	2019 13:59	13	59 Point Arena	1
10/28/2018 9:30	October	28 Sunday	2018 9:30	9	30 Point Arena	1
12/8/2018 13:45	December	8 Saturday	2018 13:45	13	45 Point Arena	1
9/17/2018 18:49	September	17 Monday	2018 18:49	18	49 Point Arena	1
10/28/2018 12:30	October	28 Sunday	2018 12:30	12	30 Point Arena	1
6/1/2019 10:20	June	1 Saturday	2019 10:20	10	20 Point Arena	1
10/20/2018 9:35	October	20 Saturday	2018 9:35	9	35 Point Arena	1
7/7/2018 13:27	July	7 Saturday	2018 13:27	13	27 Point Arena	1
5/4/2019 13:19	May	4 Saturday	2019 13:19	13	19 Point Arena	1
4/13/2018 12:21	April	13 Friday	2018 12:21	12	21 Point Arena	1

8/5/2018 10:54	August	5	Sunday	2018	10:54	10	54	Point Arena	1
1/26/2019 13:42	January	26	Saturday	2019	13:42	13	42	Point Arena	1
7/28/2018 10:57	July	28	Saturday	2018	10:57	10	57	Point Arena	1
2/17/2019 14:20	February	17	Sunday	2019	14:20	14	20	Point Arena	1
3/5/2019 16:16	March	5	Tuesday	2019	16:16	16	16	Point Arena	1
10/4/2018 8:21	October	4	Thursday	2018	8:21	8	21	Point Arena	1
5/27/2018 14:53	May	27	Sunday	2018	14:53	14	53	Point Arena	1
9/3/2018 8:55	September	3	Monday	2018	8:55	8	55	Point Arena	1
9/15/2018 9:54	September	15	Saturday	2018	9:54	9	54	Point Arena	1
9/30/2018 11:54	September	30	Sunday	2018	11:54	11	54	Point Arena	1
7/28/2018 9:00	July	28	Saturday	2018	9:00	9	0	Point Arena	1
11/4/2018 11:13	November	4	Sunday	2018	11:13	11	13	Point Arena	1
10/14/2018 9:57	October	14	Sunday	2018	9:57	9	57	Point Arena	1
6/3/2018 9:46	June	3	Sunday	2018	9:46	9	46	Point Arena	1
2/9/2019 14:01	February	9	Saturday	2019	14:01	14	1	Point Arena	1
4/13/2018 12:06	April	13	Friday	2018	12:06	12	6	Point Arena	1
8/25/2018 11:45	August	25	Saturday	2018	11:45	11	45	Point Arena	1
10/20/2018 11:13	October	20	Saturday	2018	11:13	11	13	Point Arena	1
12/6/2018 13:12	December	6	Thursday	2018	13:12	13	12	Point Arena	1
10/7/2018 11:35	October	7	Sunday	2018	11:35	11	35	Point Arena	1
6/2/2018 9:38	June	2	Saturday	2018	9:38	9	38	Point Arena	1
9/2/2018 14:18	September	2	Sunday	2018	14:18	14	18	Point Arena	1
1/27/2019 15:11	January	27	Sunday	2019	15:11	15	11	Point Arena	1
6/3/2018 10:03	June	3	Sunday	2018	10:03	10	3	Point Arena	1
10/20/2018 13:49	October	20	Saturday	2018	13:49	13	49	Point Arena	1
10/6/2018 12:23	October	6	Saturday	2018	12:23	12	23	Point Arena	1
8/18/2018 10:44	August	18	Saturday	2018	10:44	10	44	Point Arena	1
8/18/2018 10:28	August	18	Saturday	2018	10:28	10	28	Point Arena	1
4/22/2018 9:58	April	22	Sunday	2018	9:58	9	58	Point Arena	1
6/9/2018 13:11	June	9	Saturday	2018	13:11	13	11	Point Arena	1
9/25/2018 19:30	September	25	Tuesday	2018	19:30	19	30	Point Arena	1
4/22/2018 13:37	April	22	Sunday	2018	13:37	13	37	Point Arena	1
4/29/2018 9:42	April	29	Sunday	2018	9:42	9	42	Point Arena	1
4/28/2018 14:17	April	28	Saturday	2018	14:17	14	17	Point Arena	1
10/20/2018 13:49	October	20	Saturday	2018	13:49	13	49	Point Arena	1

7/8/2018 14:33	July	8 Sunday	2018 14:33	14	33 Point Arena	1
6/17/2018 10:23	June	17 Sunday	2018 10:23	10	23 Point Arena	1
9/1/2019 11:32	September	1 Sunday	2019 11:32	11	32 Point Arena	1
8/5/2018 11:48	August	5 Sunday	2018 11:48	11	48 Point Arena	1
5/12/2019 15:24	May	12 Sunday	2019 15:24	15	24 Point Arena	1
9/8/2018 9:47	September	8 Saturday	2018 9:47	9	47 Point Arena	1
1/5/2019 14:25	January	5 Saturday	2019 14:25	14	25 Point Arena	1
10/4/2018 14:43	October	4 Thursday	2018 14:43	14	43 Point Arena	1
6/1/2019 12:23	June	1 Saturday	2019 12:23	12	23 Point Arena	1
3/2/2019 10:42	March	2 Saturday	2019 10:42	10	42 Point Arena	1
5/12/2019 12:51	May	12 Sunday	2019 12:51	12	51 Point Arena	1
4/7/2019 13:08	April	7 Sunday	2019 13:08	13	8 Point Arena	1
1/27/2019 10:52	January	27 Sunday	2019 10:52	10	52 Point Arena	1
10/29/2018 13:29	October	29 Monday	2018 13:29	13	29 Point Arena	1
4/16/2018 13:40	April	16 Monday	2018 13:40	13	40 Point Arena	1
9/8/2018 9:52	September	8 Saturday	2018 9:52	9	52 Point Arena	1
7/14/2019 11:33	July	14 Sunday	2019 11:33	11	33 Point Arena	1
12/16/2018 10:35	December	16 Sunday	2018 10:35	10	35 Point Arena	1
5/1/2018 11:49	May	1 Tuesday	2018 11:49	11	49 Point Arena	1
8/17/2019 13:05	August	17 Saturday	2019 13:05	13	5 Point Arena	1
7/28/2018 8:53	July	28 Saturday	2018 8:53	8	53 Point Arena	1
10/27/2018 10:16	October	27 Saturday	2018 10:16	10	16 Point Arena	1
6/3/2018 9:53	June	3 Sunday	2018 9:53	9	53 Point Arena	1
8/4/2018 13:23	August	4 Saturday	2018 13:23	13	23 Point Arena	1
8/26/2018 8:46	August	26 Sunday	2018 8:46	8	46 Point Arena	1
8/13/2019 14:03	August	13 Tuesday	2019 14:03	14	3 Point Arena	1
7/7/2019 8:54	July	7 Sunday	2019 8:54	8	54 Point Arena	1
10/27/2018 14:07	October	27 Saturday	2018 14:07	14	7 Point Arena	1
7/29/2018 11:01	July	29 Sunday	2018 11:01	11	1 Point Arena	1
10/30/2018 10:19	October	30 Tuesday	2018 10:19	10	19 Point Arena	1
10/21/2018 12:06	October	21 Sunday	2018 12:06	12	6 Point Arena	1
12/27/2018 10:29	December	27 Thursday	2018 10:29	10	29 Point Arena	1
7/29/2018 8:49	July	29 Sunday	2018 8:49	8	49 Point Arena	1
10/23/2018 14:55	October	23 Tuesday	2018 14:55	14	55 Point Arena	1
6/16/2018 9:41	June	16 Saturday	2018 9:41	9	41 Point Arena	1

7/14/2019 13:38	July	14	Sunday	2019	13:38	13	38	Point Arena	1
10/23/2018 15:34	October	23	Tuesday	2018	15:34	15	34	Point Arena	1
8/18/2018 10:53	August	18	Saturday	2018	10:53	10	53	Point Arena	1
4/9/2018 10:28	April	9	Monday	2018	10:28	10	28	Point Arena	1
8/19/2018 8:52	August	19	Sunday	2018	8:52	8	52	Point Arena	1
4/24/2018 11:59	April	24	Tuesday	2018	11:59	11	59	Point Arena	1
2/17/2019 14:11	February	17	Sunday	2019	14:11	14	11	Point Arena	1
11/13/2018 9:21	November	13	Tuesday	2018	9:21	9	21	Point Arena	1
4/27/2019 13:34	April	27	Saturday	2019	13:34	13	34	Point Arena	1
3/31/2019 13:05	March	31	Sunday	2019	13:05	13	5	Point Arena	1
6/1/2019 9:33	June	1	Saturday	2019	9:33	9	33	Point Arena	1
4/28/2018 13:45	April	28	Saturday	2018	13:45	13	45	Point Arena	1
11/4/2018 10:47	November	4	Sunday	2018	10:47	10	47	Point Arena	1
6/10/2018 14:04	June	10	Sunday	2018	14:04	14	4	Point Arena	1
8/3/2019 11:15	August	3	Saturday	2019	11:15	11	15	Point Arena	1
9/30/2018 14:28	September	30	Sunday	2018	14:28	14	28	Point Arena	1
10/6/2018 13:59	October	6	Saturday	2018	13:59	13	59	Point Arena	1
10/10/2018 12:29	October	10	Wednesday	2018	12:29	12	29	Point Arena	1
10/28/2018 9:49	October	28	Sunday	2018	9:49	9	49	Point Arena	1
8/11/2018 13:17	August	11	Saturday	2018	13:17	13	17	Point Arena	1
6/15/2019 10:01	June	15	Saturday	2019	10:01	10	1	Point Arena	1
9/1/2018 11:24	September	1	Saturday	2018	11:24	11	24	Point Arena	1
5/28/2018 9:39	May	28	Monday	2018	9:39	9	39	Point Arena	1
7/6/2019 11:42	July	6	Saturday	2019	11:42	11	42	Point Arena	1
8/24/2019 16:20	August	24	Saturday	2019	16:20	16	20	Point Arena	1
3/30/2019 10:32	March	30	Saturday	2019	10:32	10	32	Point Arena	1
5/21/2018 9:46	May	21	Monday	2018	9:46	9	46	Point Arena	1
6/23/2018 13:24	June	23	Saturday	2018	13:24	13	24	Point Arena	1
7/1/2018 13:35	July	1	Sunday	2018	13:35	13	35	Point Arena	1
8/5/2018 11:13	August	5	Sunday	2018	11:13	11	13	Point Arena	1
8/5/2019 11:24	August	5	Monday	2019	11:24	11	24	Point Arena	1
8/4/2018 11:04	August	4	Saturday	2018	11:04	11	4	Point Arena	1
10/14/2018 10:03	October	14	Sunday	2018	10:03	10	3	Point Arena	1
3/2/2019 11:08	March	2	Saturday	2019	11:08	11	8	Point Arena	1
9/15/2018 14:35	September	15	Saturday	2018	14:35	14	35	Point Arena	1

5/8/2018 11:55	May	8 Tuesday	2018 11:55	11	55 Point Arena	1
8/18/2019 11:17	August	18 Sunday	2019 11:17	11	17 Point Arena	1
7/28/2018 15:30	July	28 Saturday	2018 15:30	15	30 Point Arena	1
1/13/2019 11:23	January	13 Sunday	2019 11:23	11	23 Point Arena	1
7/29/2018 13:16	July	29 Sunday	2018 13:16	13	16 Point Arena	1
3/30/2019 12:46	March	30 Saturday	2019 12:46	12	46 Point Arena	1
6/16/2018 14:19	June	16 Saturday	2018 14:19	14	19 Point Arena	1
1/13/2019 10:38	January	13 Sunday	2019 10:38	10	38 Point Arena	1
11/24/2018 13:41	November	24 Saturday	2018 13:41	13	41 Point Arena	1
12/16/2018 11:08	December	16 Sunday	2018 11:08	11	8 Point Arena	1
8/18/2018 13:51	August	18 Saturday	2018 13:51	13	51 Point Arena	1
8/19/2018 11:24	August	19 Sunday	2018 11:24	11	24 Point Arena	1
6/28/2019 14:17	June	28 Friday	2019 14:17	14	17 Point Arena	1
6/3/2018 14:00	June	3 Sunday	2018 14:00	14	0 Point Arena	1
12/29/2018 10:49	December	29 Saturday	2018 10:49	10	49 Point Arena	1
5/6/2018 13:53	May	6 Sunday	2018 13:53	13	53 Point Arena	1
7/29/2018 11:56	July	29 Sunday	2018 11:56	11	56 Point Arena	1
5/11/2019 12:58	May	11 Saturday	2019 12:58	12	58 Point Arena	1
12/29/2018 13:38	December	29 Saturday	2018 13:38	13	38 Point Arena	1
6/17/2018 12:07	June	17 Sunday	2018 12:07	12	7 Point Arena	1
1/20/2019 11:49	January	20 Sunday	2019 11:49	11	49 Point Arena	1
1/17/2019 15:41	January	17 Thursday	2019 15:41	15	41 Point Arena	1
4/13/2018 12:21	April	13 Friday	2018 12:21	12	21 Point Arena	1
7/20/2018 9:21	July	20 Friday	2018 9:21	9	21 Point Arena	1
5/7/2018 14:05	May	7 Monday	2018 14:05	14	5 Point Arena	1
1/20/2019 15:04	January	20 Sunday	2019 15:04	15	4 Point Arena	1
4/29/2018 12:07	April	29 Sunday	2018 12:07	12	7 Point Arena	1
3/4/2019 11:12	March	4 Monday	2019 11:12	11	12 Point Arena	1
7/14/2019 11:54	July	14 Sunday	2019 11:54	11	54 Point Arena	1
7/29/2019 14:00	July	29 Monday	2019 14:00	14	0 Point Arena	1
3/3/2019 10:12	March	3 Sunday	2019 10:12	10	12 Point Arena	1
4/17/2018 12:04	April	17 Tuesday	2018 12:04	12	4 Point Arena	1
4/21/2019 12:22	April	21 Sunday	2019 12:22	12	22 Santa Cruz	1
6/19/2018 2:15	June	19 Tuesday	2018 2:15	2	15 Santa Cruz	1
11/16/2018 16:20	November	16 Friday	2018 16:20	16	20 Santa Cruz	1

4/13/2019 10:20 April	13 Saturday	2019 10:20	10	20 Santa Cruz	1
4/19/2019 10:26 April	19 Friday	2019 10:26	10	26 Santa Cruz	1
6/3/2019 10:32 June	3 Monday	2019 10:32	10	32 Santa Cruz	1
4/28/2019 13:59 April	28 Sunday	2019 13:59	13	59 Santa Cruz	1
3/2/2019 10:54 March	2 Saturday	2019 10:54	10	54 Santa Cruz	1
8/13/2019 13:52 August	13 Tuesday	2019 13:52	13	52 Santa Cruz	1
5/11/2019 9:18 May	11 Saturday	2019 9:18	9	18 Santa Cruz	1
4/27/2019 12:50 April	27 Saturday	2019 12:50	12	50 Santa Cruz	1
5/11/2019 14:20 May	11 Saturday	2019 14:20	14	20 Santa Cruz	1
9/1/2019 14:05 September	1 Sunday	2019 14:05	14	5 Santa Cruz	1
3/9/2019 9:57 March	9 Saturday	2019 9:57	9	57 Santa Cruz	1
3/7/2019 11:45 March	7 Thursday	2019 11:45	11	45 Santa Cruz	1
5/22/2019 10:34 May	22 Wednesday	2019 10:34	10	34 Santa Cruz	1
6/30/2019 11:58 June	30 Sunday	2019 11:58	11	58 Santa Cruz	1
8/23/2019 13:42 August	23 Friday	2019 13:42	13	42 Santa Cruz	1
4/14/2019 9:34 April	14 Sunday	2019 9:34	9	34 Santa Cruz	1
7/6/2019 12:13 July	6 Saturday	2019 12:13	12	13 Santa Cruz	1
7/13/2019 11:55 July	13 Saturday	2019 11:55	11	55 Santa Cruz	1
4/19/2019 10:28 April	19 Friday	2019 10:28	10	28 Santa Cruz	1
8/15/2019 11:08 August	15 Thursday	2019 11:08	11	8 Santa Cruz	1
7/23/2019 10:05 July	23 Tuesday	2019 10:05	10	5 Santa Cruz	1
8/12/2019 12:25 August	12 Monday	2019 12:25	12	25 Santa Cruz	1
9/12/2018 12:17 September	12 Wednesday	2018 12:17	12	17 Santa Cruz	1
4/11/2019 10:11 April	11 Thursday	2019 10:11	10	11 Santa Cruz	1
10/27/2018 12:02 October	27 Saturday	2018 12:02	12	2 Santa Cruz	1
3/22/2019 12:58 March	22 Friday	2019 12:58	12	58 Santa Cruz	1
4/29/2019 10:16 April	29 Monday	2019 10:16	10	16 Santa Cruz	1
9/18/2018 14:18 September	18 Tuesday	2018 14:18	14	18 Santa Cruz	1
6/16/2019 13:51 June	16 Sunday	2019 13:51	13	51 Santa Cruz	1
7/27/2019 9:25 July	27 Saturday	2019 9:25	9	25 Santa Cruz	1
6/9/2019 11:44 June	9 Sunday	2019 11:44	11	44 Santa Cruz	1
6/26/2019 13:00 June	26 Wednesday	2019 13:00	13	0 Santa Cruz	1
7/7/2019 14:18 July	7 Sunday	2019 14:18	14	18 Santa Cruz	1
1/15/2019 10:30 January	15 Tuesday	2019 10:30	10	30 Santa Cruz	1
7/14/2019 13:55 July	14 Sunday	2019 13:55	13	55 Santa Cruz	1

4/6/2019 10:18 April	6 Saturday	2019 10:18	10	18 Santa Cruz	1
4/20/2019 14:08 April	20 Saturday	2019 14:08	14	8 Santa Cruz	1
6/29/2019 9:31 June	29 Saturday	2019 9:31	9	31 Santa Cruz	1
5/25/2019 11:11 May	25 Saturday	2019 11:11	11	11 Santa Cruz	1
3/18/2019 12:57 March	18 Monday	2019 12:57	12	57 Santa Cruz	1
7/1/2018 9:36 July	1 Sunday	2018 9:36	9	36 Santa Cruz	1
4/21/2019 11:18 April	21 Sunday	2019 11:18	11	18 Santa Cruz	1
7/27/2019 12:20 July	27 Saturday	2019 12:20	12	20 Santa Cruz	1
4/28/2019 8:40 April	28 Sunday	2019 8:40	8	40 Santa Cruz	1
7/22/2019 13:15 July	22 Monday	2019 13:15	13	15 Santa Cruz	1
5/18/2019 11:23 May	18 Saturday	2019 11:23	11	23 Santa Cruz	1
3/10/2019 9:34 March	10 Sunday	2019 9:34	9	34 Santa Cruz	1
3/30/2019 9:03 March	30 Saturday	2019 9:03	9	3 Santa Cruz	1
6/9/2019 14:12 June	9 Sunday	2019 14:12	14	12 Santa Cruz	1
6/18/2019 13:16 June	18 Tuesday	2019 13:16	13	16 Santa Cruz	1
5/4/2019 14:32 May	4 Saturday	2019 14:32	14	32 Santa Cruz	1
6/4/2019 9:50 June	4 Tuesday	2019 9:50	9	50 Santa Cruz	1
5/27/2019 12:50 May	27 Monday	2019 12:50	12	50 Santa Cruz	1
3/17/2019 12:09 March	17 Sunday	2019 12:09	12	9 Santa Cruz	1
5/12/2019 11:57 May	12 Sunday	2019 11:57	11	57 Santa Cruz	1
6/8/2019 8:54 June	8 Saturday	2019 8:54	8	54 Santa Cruz	1
6/8/2019 12:11 June	8 Saturday	2019 12:11	12	11 Santa Cruz	1
3/10/2019 12:03 March	10 Sunday	2019 12:03	12	3 Santa Cruz	1
6/15/2019 12:31 June	15 Saturday	2019 12:31	12	31 Santa Cruz	1
3/4/2019 10:27 March	4 Monday	2019 10:27	10	27 Santa Cruz	1
3/17/2019 13:19 March	17 Sunday	2019 13:19	13	19 Santa Cruz	1
4/13/2019 11:15 April	13 Saturday	2019 11:15	11	15 Santa Cruz	1
5/25/2019 13:47 May	25 Saturday	2019 13:47	13	47 Santa Cruz	1
6/30/2019 11:29 June	30 Sunday	2019 11:29	11	29 Santa Cruz	1
5/26/2019 11:51 May	26 Sunday	2019 11:51	11	51 Santa Cruz	1
4/28/2019 14:00 April	28 Sunday	2019 14:00	14	0 Santa Cruz	1
7/3/2019 10:16 July	3 Wednesday	2019 10:16	10	16 Santa Cruz	1
7/18/2019 10:07 July	18 Thursday	2019 10:07	10	7 Santa Cruz	1
9/30/2018 9:53 September	30 Sunday	2018 9:53	9	53 Santa Cruz	1
9/16/2018 8:52 September	16 Sunday	2018 8:52	8	52 Santa Cruz	1

9/29/2018 13:32	September	29 Saturday	2018 13:32	13	32 Santa Cruz	1
8/8/2019 12:13	August	8 Thursday	2019 12:13	12	13 Santa Cruz	1
7/28/2019 9:27	July	28 Sunday	2019 9:27	9	27 Santa Cruz	1
5/12/2019 14:30	May	12 Sunday	2019 14:30	14	30 Santa Cruz	1
6/17/2019 10:31	June	17 Monday	2019 10:31	10	31 Santa Cruz	1
4/4/2019 10:45	April	4 Thursday	2019 10:45	10	45 Santa Cruz	1
5/9/2019 12:59	May	9 Thursday	2019 12:59	12	59 Santa Cruz	1
8/17/2019 9:37	August	17 Saturday	2019 9:37	9	37 Santa Cruz	1
3/24/2019 12:32	March	24 Sunday	2019 12:32	12	32 Santa Cruz	1
6/16/2019 14:22	June	16 Sunday	2019 14:22	14	22 Santa Cruz	1
7/30/2019 12:06	July	30 Tuesday	2019 12:06	12	6 Santa Cruz	1
7/21/2018 13:23	July	21 Saturday	2018 13:23	13	23 Santa Cruz	1
3/17/2019 10:05	March	17 Sunday	2019 10:05	10	5 Santa Cruz	1
4/21/2019 11:56	April	21 Sunday	2019 11:56	11	56 Santa Cruz	1
8/10/2019 12:08	August	10 Saturday	2019 12:08	12	8 Santa Cruz	1
6/9/2018 13:30	June	9 Saturday	2018 13:30	13	30 Santa Cruz	1
7/29/2018 16:03	July	29 Sunday	2018 16:03	16	3 Santa Cruz	1
4/7/2019 10:24	April	7 Sunday	2019 10:24	10	24 Santa Cruz	1
1/6/2019 10:56	January	6 Sunday	2019 10:56	10	56 Santa Cruz	1
12/3/2018 11:42	December	3 Monday	2018 11:42	11	42 Santa Cruz	1
7/2/2019 11:04	July	2 Tuesday	2019 11:04	11	4 Santa Cruz	1
4/28/2019 14:08	April	28 Sunday	2019 14:08	14	8 Santa Cruz	1
9/22/2018 2:15	September	22 Saturday	2018 2:15	2	15 Santa Cruz	1
3/3/2019 10:17	March	3 Sunday	2019 10:17	10	17 Santa Cruz	1
8/18/2019 10:22	August	18 Sunday	2019 10:22	10	22 Santa Cruz	1
8/13/2019 13:10	August	13 Tuesday	2019 13:10	13	10 Santa Cruz	1
4/4/2019 13:37	April	4 Thursday	2019 13:37	13	37 Santa Cruz	1
7/28/2019 12:15	July	28 Sunday	2019 12:15	12	15 Santa Cruz	1
3/11/2019 13:35	March	11 Monday	2019 13:35	13	35 Santa Cruz	1
6/15/2019 8:59	June	15 Saturday	2019 8:59	8	59 Santa Cruz	1
5/11/2019 11:27	May	11 Saturday	2019 11:27	11	27 Santa Cruz	1
8/28/2019 15:08	August	28 Wednesday	2019 15:08	15	8 Santa Cruz	1
7/14/2019 8:48	July	14 Sunday	2019 8:48	8	48 Santa Cruz	1
3/15/2019 13:48	March	15 Friday	2019 13:48	13	48 Santa Cruz	1
6/8/2019 14:14	June	8 Saturday	2019 14:14	14	14 Santa Cruz	1

6/18/2019 10:16 June	18 Tuesday	2019 10:16	10	16 Santa Cruz	1
5/11/2019 14:36 May	11 Saturday	2019 14:36	14	36 Santa Cruz	1
8/8/2019 11:33 August	8 Thursday	2019 11:33	11	33 Santa Cruz	1
4/22/2019 10:32 April	22 Monday	2019 10:32	10	32 Santa Cruz	1
4/20/2019 12:52 April	20 Saturday	2019 12:52	12	52 Santa Cruz	1
6/30/2019 14:17 June	30 Sunday	2019 14:17	14	17 Santa Cruz	1
7/2/2019 13:16 July	2 Tuesday	2019 13:16	13	16 Santa Cruz	1
7/7/2019 14:25 July	7 Sunday	2019 14:25	14	25 Santa Cruz	1
8/4/2018 11:04 August	4 Saturday	2018 11:04	11	4 Santa Cruz	1
5/25/2019 14:03 May	25 Saturday	2019 14:03	14	3 Santa Cruz	1
3/9/2019 13:12 March	9 Saturday	2019 13:12	13	12 Santa Cruz	1
5/9/2019 9:41 May	9 Thursday	2019 9:41	9	41 Santa Cruz	1
3/29/2019 10:19 March	29 Friday	2019 10:19	10	19 Santa Cruz	1
7/11/2019 10:01 July	11 Thursday	2019 10:01	10	1 Santa Cruz	1
7/5/2019 13:47 July	5 Friday	2019 13:47	13	47 Santa Cruz	1
8/26/2018 9:15 August	26 Sunday	2018 9:15	9	15 Santa Cruz	1
6/15/2019 8:14 June	15 Saturday	2019 8:14	8	14 Santa Cruz	1
4/22/2019 13:39 April	22 Monday	2019 13:39	13	39 Santa Cruz	1
5/28/2019 10:16 May	28 Tuesday	2019 10:16	10	16 Santa Cruz	1
7/22/2019 13:43 July	22 Monday	2019 13:43	13	43 Santa Cruz	1
4/27/2019 14:17 April	27 Saturday	2019 14:17	14	17 Santa Cruz	1
3/14/2019 13:25 March	14 Thursday	2019 13:25	13	25 Santa Cruz	1
4/28/2018 12:09 April	28 Saturday	2018 12:09	12	9 Santa Cruz	1
7/1/2019 13:57 July	1 Monday	2019 13:57	13	57 Santa Cruz	1
5/10/2019 13:47 May	10 Friday	2019 13:47	13	47 Santa Cruz	1
4/6/2019 13:38 April	6 Saturday	2019 13:38	13	38 Santa Cruz	1
8/9/2019 10:41 August	9 Friday	2019 10:41	10	41 Santa Cruz	1
4/25/2019 13:47 April	25 Thursday	2019 13:47	13	47 Santa Cruz	1
6/28/2019 14:57 June	28 Friday	2019 14:57	14	57 Santa Cruz	1
7/20/2019 8:46 July	20 Saturday	2019 8:46	8	46 Santa Cruz	1
8/12/2019 10:21 August	12 Monday	2019 10:21	10	21 Santa Cruz	1
5/21/2019 12:15 May	21 Tuesday	2019 12:15	12	15 Santa Cruz	1
4/6/2019 13:13 April	6 Saturday	2019 13:13	13	13 Santa Cruz	1
6/10/2018 12:09 June	10 Sunday	2018 12:09	12	9 Santa Cruz	1
7/21/2019 14:16 July	21 Sunday	2019 14:16	14	16 Santa Cruz	1

4/20/2019 9:07 April	20 Saturday	2019 9:07	9	7 Santa Cruz	1
4/29/2019 10:17 April	29 Monday	2019 10:17	10	17 Santa Cruz	1
5/5/2019 9:25 May	5 Sunday	2019 9:25	9	25 Santa Cruz	1
8/3/2019 12:01 August	3 Saturday	2019 12:01	12	1 Santa Cruz	1
7/4/2019 14:51 July	4 Thursday	2019 14:51	14	51 Santa Cruz	1
4/21/2019 9:10 April	21 Sunday	2019 9:10	9	10 Santa Cruz	1
6/9/2019 14:56 June	9 Sunday	2019 14:56	14	56 Santa Cruz	1
7/30/2019 10:43 July	30 Tuesday	2019 10:43	10	43 Santa Cruz	1
4/28/2019 11:25 April	28 Sunday	2019 11:25	11	25 Santa Cruz	1
4/14/2019 13:18 April	14 Sunday	2019 13:18	13	18 Santa Cruz	1
4/21/2019 14:40 April	21 Sunday	2019 14:40	14	40 Santa Cruz	1
5/29/2019 10:14 May	29 Wednesday	2019 10:14	10	14 Santa Cruz	1
7/23/2019 11:38 July	23 Tuesday	2019 11:38	11	38 Santa Cruz	1
11/4/2018 10:50 November	4 Sunday	2018 10:50	10	50 Santa Cruz	1
7/21/2018 10:48 July	21 Saturday	2018 10:48	10	48 Santa Cruz	1
4/25/2019 10:15 April	25 Thursday	2019 10:15	10	15 Santa Cruz	1
7/2/2019 10:02 July	2 Tuesday	2019 10:02	10	2 Santa Cruz	1
3/24/2019 14:26 March	24 Sunday	2019 14:26	14	26 Santa Cruz	1
6/29/2019 14:05 June	29 Saturday	2019 14:05	14	5 Santa Cruz	1
6/29/2019 14:32 June	29 Saturday	2019 14:32	14	32 Santa Cruz	1
7/11/2019 13:12 July	11 Thursday	2019 13:12	13	12 Santa Cruz	1
7/19/2019 10:57 July	19 Friday	2019 10:57	10	57 Santa Cruz	1
8/9/2019 9:58 August	9 Friday	2019 9:58	9	58 Santa Cruz	1
5/18/2019 14:46 May	18 Saturday	2019 14:46	14	46 Santa Cruz	1
5/29/2018 12:02 May	29 Tuesday	2018 12:02	12	2 Santa Cruz	1
5/8/2019 10:16 May	8 Wednesday	2019 10:16	10	16 Santa Cruz	1
6/3/2018 14:01 June	3 Sunday	2018 14:01	14	1 Santa Cruz	1
8/4/2019 9:11 August	4 Sunday	2019 9:11	9	11 Santa Cruz	1
3/10/2019 11:59 March	10 Sunday	2019 11:59	11	59 Santa Cruz	1
6/22/2019 9:43 June	22 Saturday	2019 9:43	9	43 Santa Cruz	1
6/30/2019 11:04 June	30 Sunday	2019 11:04	11	4 Santa Cruz	1
4/22/2019 10:34 April	22 Monday	2019 10:34	10	34 Santa Cruz	1
3/17/2019 9:43 March	17 Sunday	2019 9:43	9	43 Santa Cruz	1
6/8/2019 11:36 June	8 Saturday	2019 11:36	11	36 Santa Cruz	1
4/28/2019 13:57 April	28 Sunday	2019 13:57	13	57 Santa Cruz	1

3/14/2019 13:07 March	14 Thursday	2019 13:07	13	7 Santa Cruz	1
6/9/2019 14:28 June	9 Sunday	2019 14:28	14	28 Santa Cruz	1
7/15/2018 12:16 July	15 Sunday	2018 12:16	12	16 Santa Cruz	1
6/15/2019 11:51 June	15 Saturday	2019 11:51	11	51 Santa Cruz	1
7/27/2019 14:34 July	27 Saturday	2019 14:34	14	34 Santa Cruz	1
6/22/2019 14:44 June	22 Saturday	2019 14:44	14	44 Santa Cruz	1
5/31/2019 13:11 May	31 Friday	2019 13:11	13	11 Santa Cruz	1
6/30/2019 8:57 June	30 Sunday	2019 8:57	8	57 Santa Cruz	1
4/28/2019 12:42 April	28 Sunday	2019 12:42	12	42 Santa Cruz	1
6/23/2019 13:39 June	23 Sunday	2019 13:39	13	39 Santa Cruz	1
4/21/2019 15:03 April	21 Sunday	2019 15:03	15	3 Santa Cruz	1
3/8/2019 14:47 March	8 Friday	2019 14:47	14	47 Santa Cruz	1
3/29/2019 10:05 March	29 Friday	2019 10:05	10	5 Santa Cruz	1
11/18/2018 10:35 November	18 Sunday	2018 10:35	10	35 Santa Cruz	1
7/13/2019 11:39 July	13 Saturday	2019 11:39	11	39 Santa Cruz	1
4/15/2019 13:30 April	15 Monday	2019 13:30	13	30 Santa Cruz	1
4/1/2019 10:53 April	1 Monday	2019 10:53	10	53 Santa Cruz	1
7/7/2018 13:19 July	7 Saturday	2018 13:19	13	19 Santa Cruz	1
8/24/2019 12:02 August	24 Saturday	2019 12:02	12	2 Santa Cruz	1
4/18/2019 13:13 April	18 Thursday	2019 13:13	13	13 Santa Cruz	1
7/13/2019 14:22 July	13 Saturday	2019 14:22	14	22 Santa Cruz	1
5/9/2019 13:39 May	9 Thursday	2019 13:39	13	39 Santa Cruz	1
4/28/2019 8:28 April	28 Sunday	2019 8:28	8	28 Santa Cruz	1
3/21/2019 10:04 March	21 Thursday	2019 10:04	10	4 Santa Cruz	1
6/3/2019 13:09 June	3 Monday	2019 13:09	13	9 Santa Cruz	1
4/14/2019 12:52 April	14 Sunday	2019 12:52	12	52 Santa Cruz	1
3/31/2019 9:06 March	31 Sunday	2019 9:06	9	6 Santa Cruz	1
5/8/2019 13:26 May	8 Wednesday	2019 13:26	13	26 Santa Cruz	1
5/26/2019 13:31 May	26 Sunday	2019 13:31	13	31 Santa Cruz	1
5/25/2019 13:12 May	25 Saturday	2019 13:12	13	12 Santa Cruz	1
7/16/2019 13:52 July	16 Tuesday	2019 13:52	13	52 Santa Cruz	1
9/28/2018 8:43 September	28 Friday	2018 8:43	8	43 Santa Cruz	1
4/12/2019 10:02 April	12 Friday	2019 10:02	10	2 Santa Cruz	1
4/8/2019 11:08 April	8 Monday	2019 11:08	11	8 Santa Cruz	1
5/31/2019 12:44 May	31 Friday	2019 12:44	12	44 Santa Cruz	1

3/15/2019 13:56	March	15 Friday	2019 13:56	13	56 Santa Cruz	1
6/24/2019 10:37	June	24 Monday	2019 10:37	10	37 Santa Cruz	1
4/22/2019 14:34	April	22 Monday	2019 14:34	14	34 Santa Cruz	1
11/24/2018 11:18	November	24 Saturday	2018 11:18	11	18 Santa Cruz	1
6/21/2019 10:45	June	21 Friday	2019 10:45	10	45 Santa Cruz	1
3/29/2019 10:04	March	29 Friday	2019 10:04	10	4 Santa Cruz	1
7/22/2019 10:08	July	22 Monday	2019 10:08	10	8 Santa Cruz	1
5/12/2019 9:25	May	12 Sunday	2019 9:25	9	25 Santa Cruz	1
6/6/2019 10:26	June	6 Thursday	2019 10:26	10	26 Santa Cruz	1
8/10/2019 12:41	August	10 Saturday	2019 12:41	12	41 Santa Cruz	1
10/12/2018 2:15	October	12 Friday	2018 2:15	2	15 Santa Cruz	1
7/21/2019 11:21	July	21 Sunday	2019 11:21	11	21 Santa Cruz	1
9/21/2018 12:06	September	21 Friday	2018 12:06	12	6 Santa Cruz	1
4/22/2018 13:52	April	22 Sunday	2018 13:52	13	52 Santa Cruz	1
6/8/2019 11:31	June	8 Saturday	2019 11:31	11	31 Santa Cruz	1
6/2/2019 13:31	June	2 Sunday	2019 13:31	13	31 Santa Cruz	1
7/27/2019 10:07	July	27 Saturday	2019 10:07	10	7 Santa Cruz	1
5/2/2019 13:13	May	2 Thursday	2019 13:13	13	13 Santa Cruz	1
7/7/2018 2:15	July	7 Saturday	2018 2:15	2	15 Santa Cruz	1
3/16/2019 12:53	March	16 Saturday	2019 12:53	12	53 Santa Cruz	1
7/14/2019 14:22	July	14 Sunday	2019 14:22	14	22 Santa Cruz	1
9/21/2018 20:08	September	21 Friday	2018 20:08	20	8 Santa Cruz	1
8/11/2019 14:21	August	11 Sunday	2019 14:21	14	21 Santa Cruz	1
8/22/2019 13:10	August	22 Thursday	2019 13:10	13	10 Santa Cruz	1
12/29/2018 13:40	December	29 Saturday	2018 13:40	13	40 Santa Cruz	1
3/30/2019 12:22	March	30 Saturday	2019 12:22	12	22 Santa Cruz	1
6/8/2019 9:02	June	8 Saturday	2019 9:02	9	2 Santa Cruz	1
5/5/2019 9:11	May	5 Sunday	2019 9:11	9	11 Santa Cruz	1
5/4/2019 10:55	May	4 Saturday	2019 10:55	10	55 Santa Cruz	1
5/4/2019 11:54	May	4 Saturday	2019 11:54	11	54 Santa Cruz	1
8/10/2019 14:16	August	10 Saturday	2019 14:16	14	16 Santa Cruz	1
7/15/2018 13:15	July	15 Sunday	2018 13:15	13	15 Santa Cruz	1
3/16/2019 8:58	March	16 Saturday	2019 8:58	8	58 Santa Cruz	1
6/24/2019 14:19	June	24 Monday	2019 14:19	14	19 Santa Cruz	1
2/19/2019 17:28	February	19 Tuesday	2019 17:28	17	28 Santa Cruz	1

5/1/2019 12:18 May	1 Wednesday	2019 12:18	12	18 Santa Cruz	1
6/30/2019 14:26 June	30 Sunday	2019 14:26	14	26 Santa Cruz	1
3/16/2019 10:27 March	16 Saturday	2019 10:27	10	27 Santa Cruz	1
4/14/2019 12:41 April	14 Sunday	2019 12:41	12	41 Santa Cruz	1
7/17/2019 10:30 July	17 Wednesday	2019 10:30	10	30 Santa Cruz	1
8/17/2019 14:14 August	17 Saturday	2019 14:14	14	14 Santa Cruz	1
7/17/2019 11:05 July	17 Wednesday	2019 11:05	11	5 Santa Cruz	1
3/31/2019 9:02 March	31 Sunday	2019 9:02	9	2 Santa Cruz	1
4/6/2019 15:00 April	6 Saturday	2019 15:00	15	0 Santa Cruz	1
6/25/2019 10:18 June	25 Tuesday	2019 10:18	10	18 Santa Cruz	1
11/3/2018 12:35 November	3 Saturday	2018 12:35	12	35 Santa Cruz	1
4/7/2019 13:33 April	7 Sunday	2019 13:33	13	33 Santa Cruz	1
4/19/2019 13:22 April	19 Friday	2019 13:22	13	22 Santa Cruz	1
4/8/2019 11:07 April	8 Monday	2019 11:07	11	7 Santa Cruz	1
7/13/2019 13:15 July	13 Saturday	2019 13:15	13	15 Santa Cruz	1
5/5/2019 12:47 May	5 Sunday	2019 12:47	12	47 Santa Cruz	1
4/11/2019 10:12 April	11 Thursday	2019 10:12	10	12 Santa Cruz	1
8/29/2019 10:56 August	29 Thursday	2019 10:56	10	56 Santa Cruz	1
3/21/2019 10:00 March	21 Thursday	2019 10:00	10	0 Santa Cruz	1
6/29/2019 11:39 June	29 Saturday	2019 11:39	11	39 Santa Cruz	1
4/27/2019 12:14 April	27 Saturday	2019 12:14	12	14 Santa Cruz	1
10/27/2018 11:53 October	27 Saturday	2018 11:53	11	53 Santa Cruz	1
11/24/2018 15:22 November	24 Saturday	2018 15:22	15	22 Santa Cruz	1
6/30/2019 11:28 June	30 Sunday	2019 11:28	11	28 Santa Cruz	1
9/22/2018 14:20 September	22 Saturday	2018 14:20	14	20 Santa Cruz	1
6/10/2019 10:25 June	10 Monday	2019 10:25	10	25 Santa Cruz	1
6/12/2019 10:46 June	12 Wednesday	2019 10:46	10	46 Santa Cruz	1
4/29/2019 10:16 April	29 Monday	2019 10:16	10	16 Santa Cruz	1
4/22/2019 13:38 April	22 Monday	2019 13:38	13	38 Santa Cruz	1
8/16/2019 10:12 August	16 Friday	2019 10:12	10	12 Santa Cruz	1
7/20/2019 12:38 July	20 Saturday	2019 12:38	12	38 Santa Cruz	1
4/1/2019 14:03 April	1 Monday	2019 14:03	14	3 Santa Cruz	1
7/14/2019 8:54 July	14 Sunday	2019 8:54	8	54 Santa Cruz	1
5/26/2018 11:37 May	26 Saturday	2018 11:37	11	37 Santa Cruz	1
6/16/2019 9:30 June	16 Sunday	2019 9:30	9	30 Santa Cruz	1

3/8/2019 11:30	March	8 Friday	2019 11:30	11	30 Santa Cruz	1
5/1/2019 12:53	May	1 Wednesday	2019 12:53	12	53 Santa Cruz	1
6/23/2019 11:22	June	23 Sunday	2019 11:22	11	22 Santa Cruz	1
9/1/2018 9:55	September	1 Saturday	2018 9:55	9	55 Santa Cruz	1
5/4/2019 9:09	May	4 Saturday	2019 9:09	9	9 Santa Cruz	1
6/18/2019 13:23	June	18 Tuesday	2019 13:23	13	23 Santa Cruz	1
3/17/2019 10:32	March	17 Sunday	2019 10:32	10	32 Santa Cruz	1
9/23/2018 10:09	September	23 Sunday	2018 10:09	10	9 Santa Cruz	1
6/6/2019 10:40	June	6 Thursday	2019 10:40	10	40 Santa Cruz	1
7/19/2019 13:10	July	19 Friday	2019 13:10	13	10 Santa Cruz	1
3/31/2019 12:16	March	31 Sunday	2019 12:16	12	16 Santa Cruz	1
4/25/2019 13:35	April	25 Thursday	2019 13:35	13	35 Santa Cruz	1
8/30/2019 10:30	August	30 Friday	2019 10:30	10	30 Santa Cruz	1
3/22/2019 9:22	March	22 Friday	2019 9:22	9	22 Santa Cruz	1
5/25/2019 12:00	May	25 Saturday	2019 12:00	12	0 Santa Cruz	1
5/15/2019 10:11	May	15 Wednesday	2019 10:11	10	11 Santa Cruz	1
11/5/2018 18:30	November	5 Monday	2018 18:30	18	30 Santa Cruz	1
7/24/2019 13:12	July	24 Wednesday	2019 13:12	13	12 Santa Cruz	1
3/31/2019 9:23	March	31 Sunday	2019 9:23	9	23 Santa Cruz	1
6/13/2019 10:44	June	13 Thursday	2019 10:44	10	44 Santa Cruz	1
8/12/2018 15:40	August	12 Sunday	2018 15:40	15	40 Santa Cruz	1
5/25/2019 9:26	May	25 Saturday	2019 9:26	9	26 Santa Cruz	1
6/16/2019 11:35	June	16 Sunday	2019 11:35	11	35 Santa Cruz	1
5/12/2019 12:27	May	12 Sunday	2019 12:27	12	27 Santa Cruz	1
4/6/2019 14:06	April	6 Saturday	2019 14:06	14	6 Santa Cruz	1
7/12/2018 2:15	July	12 Thursday	2018 2:15	2	15 Santa Cruz	1
6/29/2019 13:54	June	29 Saturday	2019 13:54	13	54 Santa Cruz	1
3/31/2019 12:43	March	31 Sunday	2019 12:43	12	43 Santa Cruz	1
7/5/2019 13:35	July	5 Friday	2019 13:35	13	35 Santa Cruz	1
8/25/2019 11:27	August	25 Sunday	2019 11:27	11	27 Santa Cruz	1
7/16/2019 10:31	July	16 Tuesday	2019 10:31	10	31 Santa Cruz	1
5/31/2019 10:13	May	31 Friday	2019 10:13	10	13 Santa Cruz	1
3/9/2019 13:05	March	9 Saturday	2019 13:05	13	5 Santa Cruz	1
5/14/2018 9:51	May	14 Monday	2018 9:51	9	51 Santa Cruz	1
4/4/2019 9:41	April	4 Thursday	2019 9:41	9	41 Santa Cruz	1

6/18/2019 10:04 June	18 Tuesday	2019 10:04	10	4 Santa Cruz	1
10/28/2018 9:46 October	28 Sunday	2018 9:46	9	46 Santa Cruz	1
4/26/2019 10:18 April	26 Friday	2019 10:18	10	18 Santa Cruz	1
3/7/2019 13:50 March	7 Thursday	2019 13:50	13	50 Santa Cruz	1
8/2/2019 10:08 August	2 Friday	2019 10:08	10	8 Santa Cruz	1
3/14/2019 9:54 March	14 Thursday	2019 9:54	9	54 Santa Cruz	1
8/18/2019 11:20 August	18 Sunday	2019 11:20	11	20 Santa Cruz	1
6/19/2019 10:27 June	19 Wednesday	2019 10:27	10	27 Santa Cruz	1
5/23/2019 9:45 May	23 Thursday	2019 9:45	9	45 Santa Cruz	1
9/5/2019 13:10 September	5 Thursday	2019 13:10	13	10 Santa Cruz	1
9/5/2018 2:15 September	5 Wednesday	2018 2:15	2	15 Santa Cruz	1
3/25/2019 10:00 March	25 Monday	2019 10:00	10	0 Santa Cruz	1
8/30/2019 13:25 August	30 Friday	2019 13:25	13	25 Santa Cruz	1
4/1/2019 10:48 April	1 Monday	2019 10:48	10	48 Santa Cruz	1
3/15/2019 10:13 March	15 Friday	2019 10:13	10	13 Santa Cruz	1
5/23/2019 10:26 May	23 Thursday	2019 10:26	10	26 Santa Cruz	1
8/18/2019 11:26 August	18 Sunday	2019 11:26	11	26 Santa Cruz	1
6/16/2019 9:17 June	16 Sunday	2019 9:17	9	17 Santa Cruz	1
7/6/2019 14:38 July	6 Saturday	2019 14:38	14	38 Santa Cruz	1
4/6/2019 10:19 April	6 Saturday	2019 10:19	10	19 Santa Cruz	1
8/10/2019 10:15 August	10 Saturday	2019 10:15	10	15 Santa Cruz	1
3/16/2019 9:14 March	16 Saturday	2019 9:14	9	14 Santa Cruz	1
7/9/2019 10:09 July	9 Tuesday	2019 10:09	10	9 Santa Cruz	1
5/18/2019 9:11 May	18 Saturday	2019 9:11	9	11 Santa Cruz	1
3/12/2019 10:08 March	12 Tuesday	2019 10:08	10	8 Santa Cruz	1
11/6/2018 18:13 November	6 Tuesday	2018 18:13	18	13 Santa Cruz	1
6/30/2019 9:08 June	30 Sunday	2019 9:08	9	8 Santa Cruz	1
3/23/2019 9:23 March	23 Saturday	2019 9:23	9	23 Santa Cruz	1
8/3/2019 11:23 August	3 Saturday	2019 11:23	11	23 Santa Cruz	1
6/14/2019 10:07 June	14 Friday	2019 10:07	10	7 Santa Cruz	1
5/18/2019 11:39 May	18 Saturday	2019 11:39	11	39 Santa Cruz	1
7/24/2019 10:30 July	24 Wednesday	2019 10:30	10	30 Santa Cruz	1
5/5/2019 11:47 May	5 Sunday	2019 11:47	11	47 Santa Cruz	1
4/8/2019 10:27 April	8 Monday	2019 10:27	10	27 Santa Cruz	1
5/26/2019 9:20 May	26 Sunday	2019 9:20	9	20 Santa Cruz	1

3/24/2019 12:21 March	24 Sunday	2019 12:21	12	21 Santa Cruz	1
8/2/2019 10:02 August	2 Friday	2019 10:02	10	2 Santa Cruz	1
3/18/2019 10:01 March	18 Monday	2019 10:01	10	1 Santa Cruz	1
6/8/2019 14:10 June	8 Saturday	2019 14:10	14	10 Santa Cruz	1
6/14/2019 14:15 June	14 Friday	2019 14:15	14	15 Santa Cruz	1
6/29/2019 9:21 June	29 Saturday	2019 9:21	9	21 Santa Cruz	1
9/16/2018 11:42 September	16 Sunday	2018 11:42	11	42 Santa Cruz	1
3/16/2019 12:47 March	16 Saturday	2019 12:47	12	47 Santa Cruz	1
7/28/2019 14:20 July	28 Sunday	2019 14:20	14	20 Santa Cruz	1
4/28/2019 12:08 April	28 Sunday	2019 12:08	12	8 Santa Cruz	1
8/30/2019 13:01 August	30 Friday	2019 13:01	13	1 Santa Cruz	1
6/29/2019 12:17 June	29 Saturday	2019 12:17	12	17 Santa Cruz	1
3/30/2019 12:59 March	30 Saturday	2019 12:59	12	59 Santa Cruz	1
5/21/2019 13:06 May	21 Tuesday	2019 13:06	13	6 Santa Cruz	1
9/3/2019 13:55 September	3 Tuesday	2019 13:55	13	55 Santa Cruz	1
4/4/2019 9:39 April	4 Thursday	2019 9:39	9	39 Santa Cruz	1
5/4/2019 15:10 May	4 Saturday	2019 15:10	15	10 Santa Cruz	1

