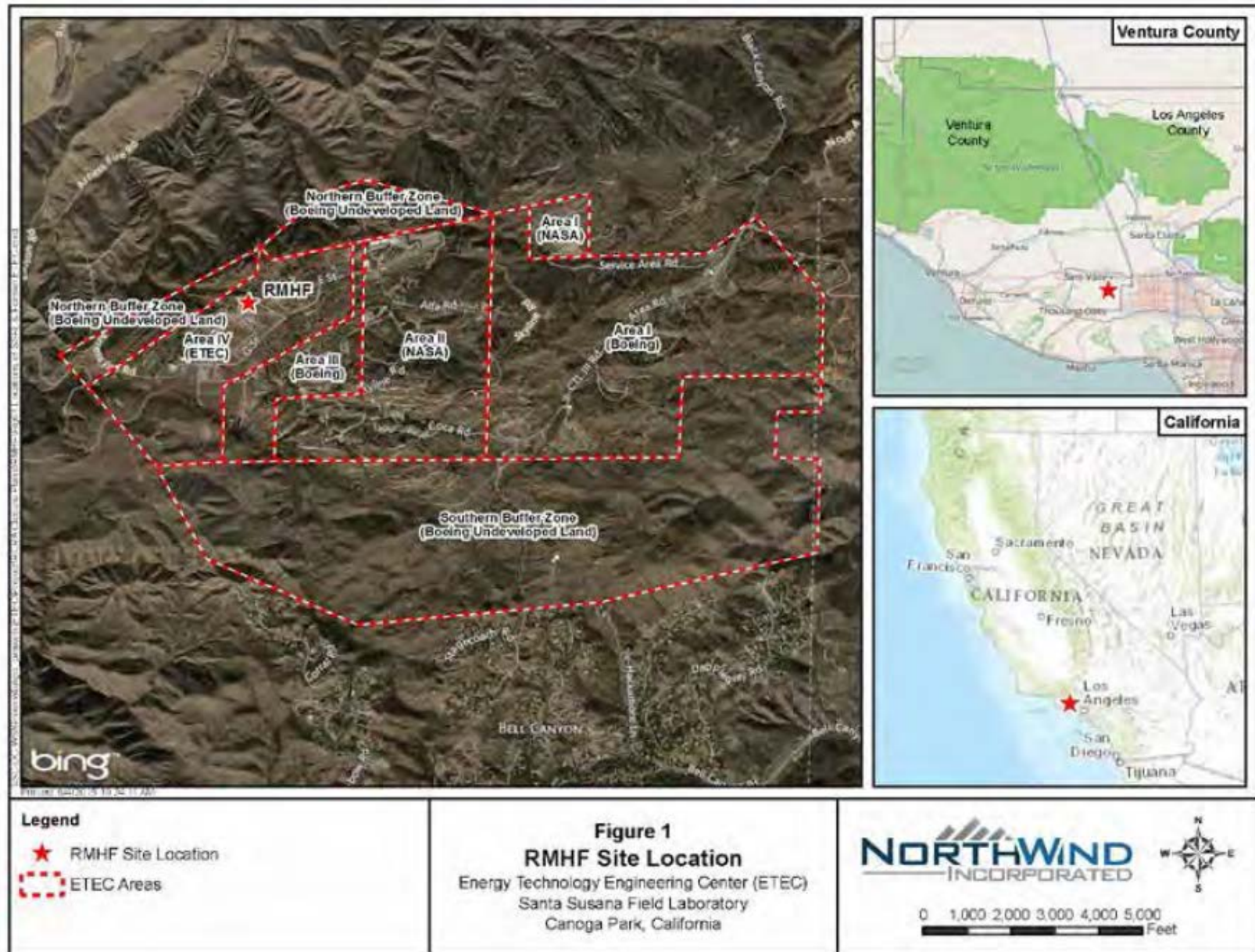


**Figure 1:  
Radioactive Materials Handling Facility Site Location**



Source: North Wind, Incorporated, 2015. RCRA Closure Plan Radioactive Materials Handling Facility, Buildings 4021, 4022, and 4621, ETEC, Santa Susana Field Laboratory, Area IV, Ventura County, California, Revision 0. July.



**Figure 2:  
Radioactive Materials Handling Facility**





**Figure 3**  
**Radioactive Materials Handling Facility Overview**



**Figure D-2 Radioactive Materials Handling Facility Overview**

Source: Department of Energy, 2018. Final Environmental Impact Statement for Remediation of Area IV and the Northern Buffer Zone of the Santa Susana Field Laboratory. November. Appendix D, Detailed Project Information.