

TOWN OF WINDSOR JAGUAR WAY EXTENSION PROJECT

APPENDIX C SUPPORTING FIGURES C-1 through C-9

PREPARED BY:

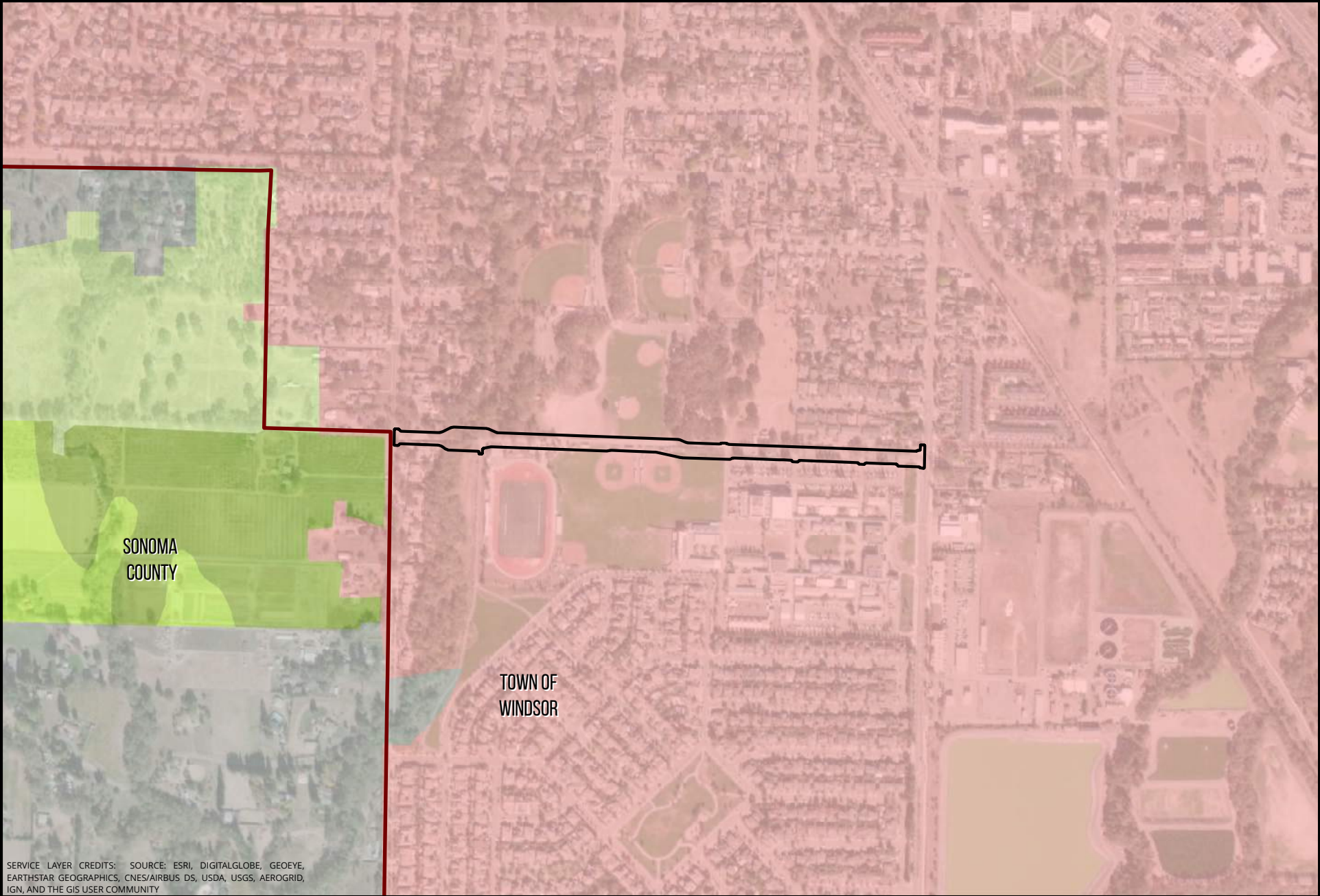


Metropolitan Planning Group
499 Humboldt Street
Santa Rosa, CA 95404

December 2019

- C-1: Farmland
- C-2: Land Cover Classification
- C-3: Faults
- C-4: Alquist-Priolo Fault Zones
- C-5: Shaking Hazard
- C-6: Liquification Susceptibility
- C-7: Landslide Potential
- C-8: Fire Hazard Severity Zones
- C-9: FEMA Flood Hazards

FIGURE C-1



SERVICE LAYER CREDITS: SOURCE: ESRI, DIGITALGLOBE, GEOEYE, EARTHSTAR GEOGRAPHICS, CNES/AIRBUS DS, USDA, USGS, AEROGRIID, IGN, AND THE GIS USER COMMUNITY

JAGUAR WAY EXTENSION: IMPORTANT FARMLAND

0 0.05 0.1 0.2 Miles
Data source: Sonoma County GIS; CA Dept. of Conservation

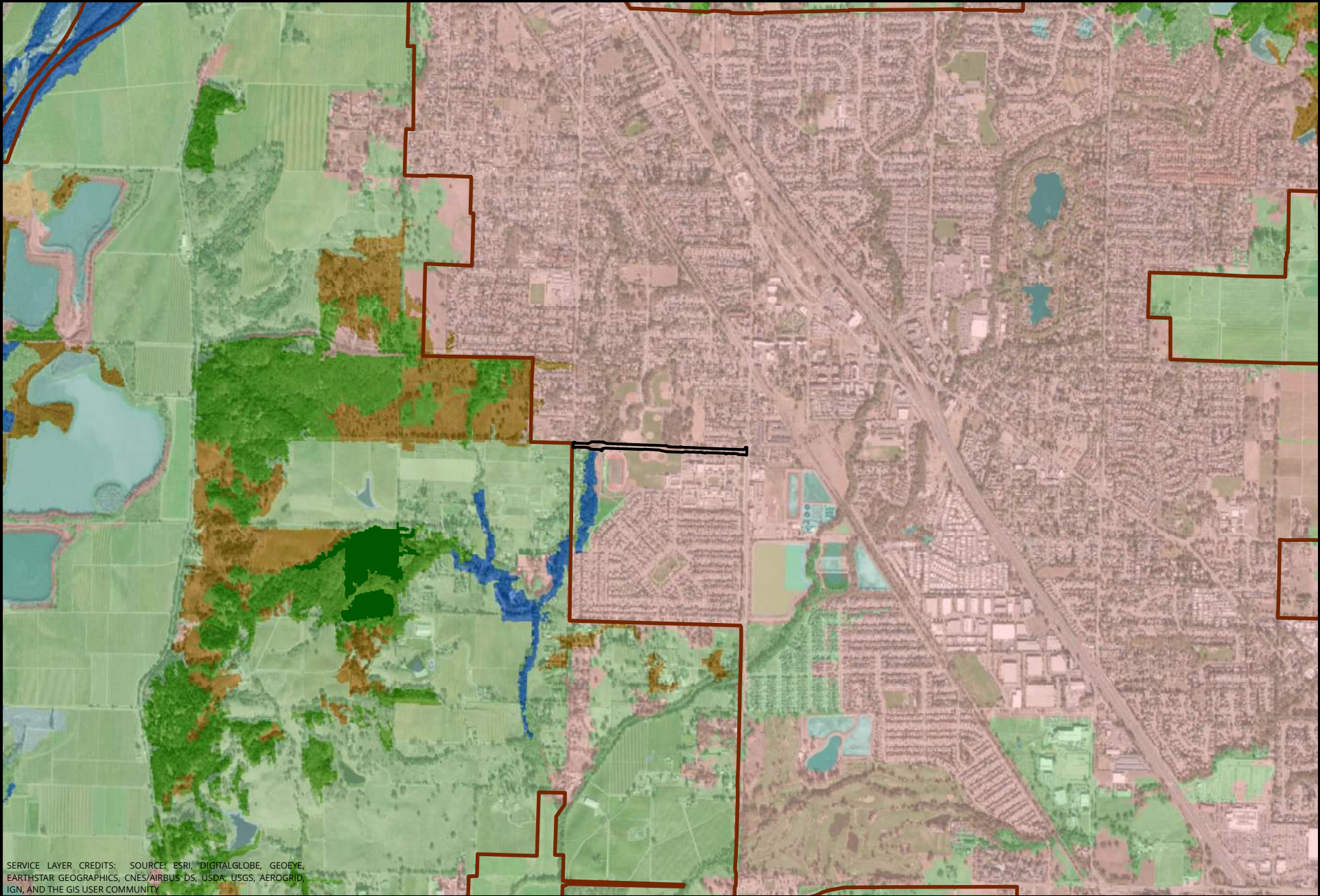
- FARMLAND OF STATEWIDE IMPORTANCE (S)
- FARMLAND OF LOCAL IMPORTANCE (L)
- UNIQUE FARMLAND (U)

- URBAN AND BUILT-UP LAND (D)
- OTHER LAND (X)
- TOWN OF WINDSOR

PROJECT LIMITS



FIGURE C-2



SERVICE LAYER CREDITS: SOURCE: ESRI, DIGITALGLOBE, GEOEYE, EARTHSTAR GEOGRAPHICS, CNES/AIRBUS DS, USDA, USGS, AEROGRIID, IGN, AND THE GIS USER COMMUNITY

JAGUAR WAY EXTENSION: LAND COVER CLASSIFICATION

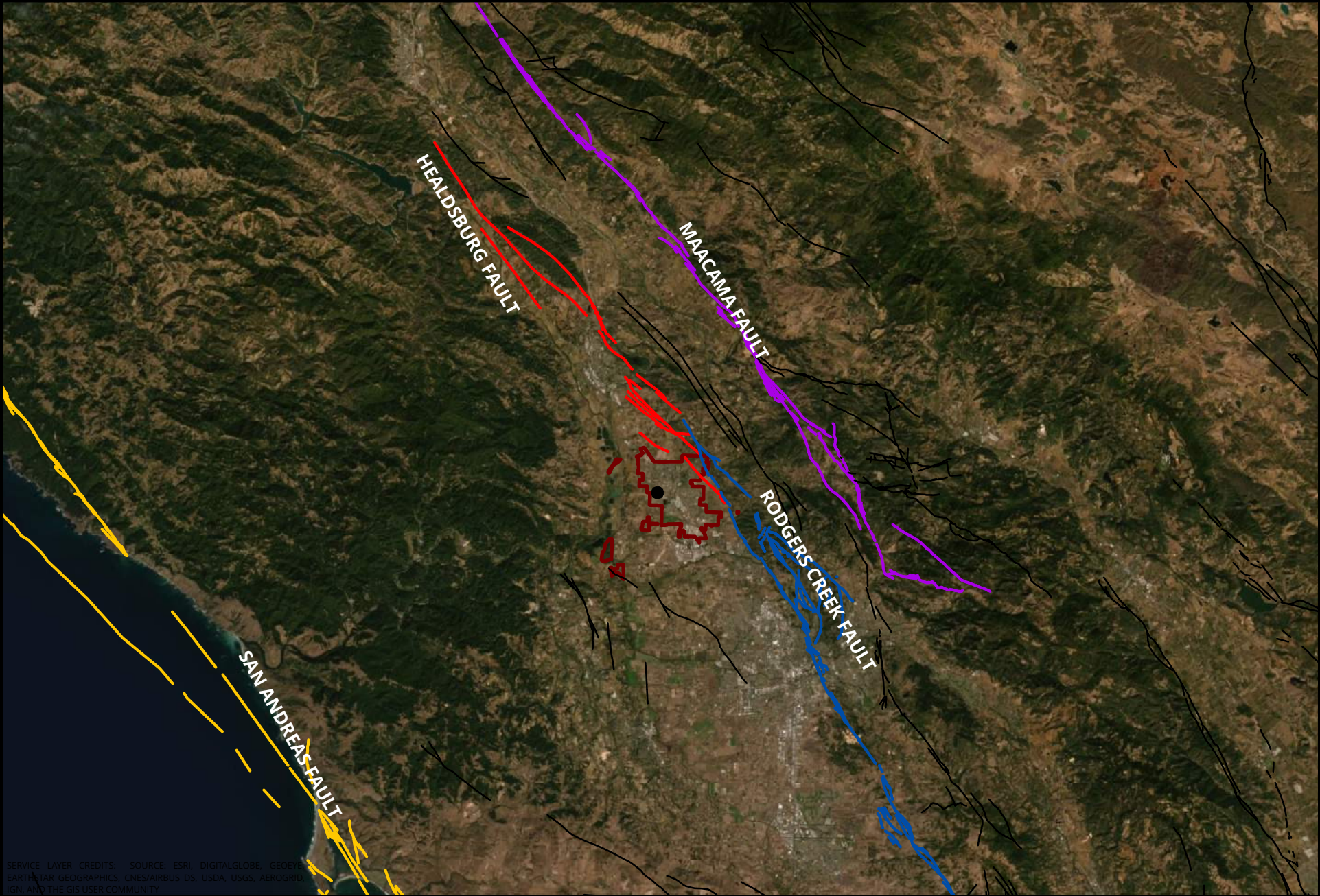
0 0.175 0.35 0.7 Miles

Data source: Sonoma County GIS; US Dept. of Agriculture, Forest Service, 2007

- | | | |
|------------------------|------------------------|-----------------|
| PRODUCTIVE FOREST SITE | BARREN LAND | TOWN OF WINDSOR |
| FOREST LAND | URBAN OR BUILT-UP LAND | PROJECT LIMITS |
| AGRICULTURAL LAND | WATER | |
| RANGELAND | WETLAND | |



FIGURE C-3



SERVICE LAYER CREDITS: SOURCE: ESRI, DIGITALGLOBE, GEOEY, EARTHSTAR GEOGRAPHICS, CNES/AIRBUS DS, USDA, USGS, AEROGRIID, IGN, AND THE GIS USER COMMUNITY

JAGUAR WAY EXTENSION: FAULTS

0 2.5 5 10 Miles

Data source: Sonoma County GIS; USGS, CA Geological Survey, 2018

— OTHER QUATERNARY FAULTS	— RODGERS CREEK FAULT	● PROJECT LOCATION
— HEALDSBURG FAULT	— SAN ANDREAS FAULT ZONE	▭ TOWN OF WINDSOR
— MAACAMA FAULT ZONE		


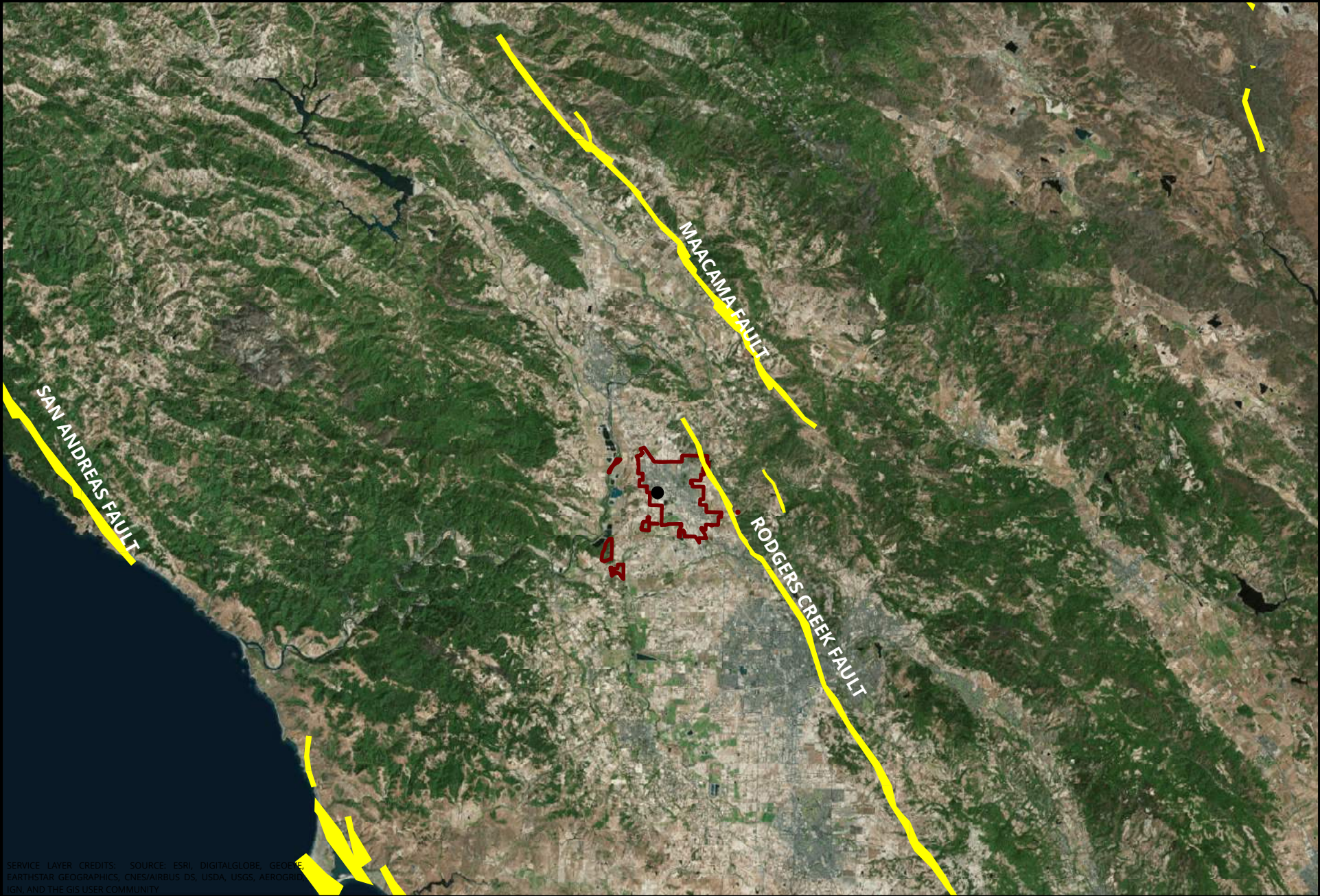
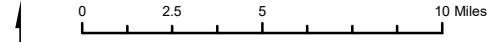


FIGURE C-4



SERVICE LAYER CREDITS: SOURCE: ESRI, DIGITALGLOBE, GEOTIFF, EARTHSTAR GEOGRAPHICS, CNES/AIRBUS DS, USDA, USGS, AEROGRIFF, IGN, AND THE GIS USER COMMUNITY

JAGUAR WAY EXTENSION: ALQUIST-PRIOLO ZONES



Data source: Sonoma County GIS; Dept. of Conservation, CA Geological Survey




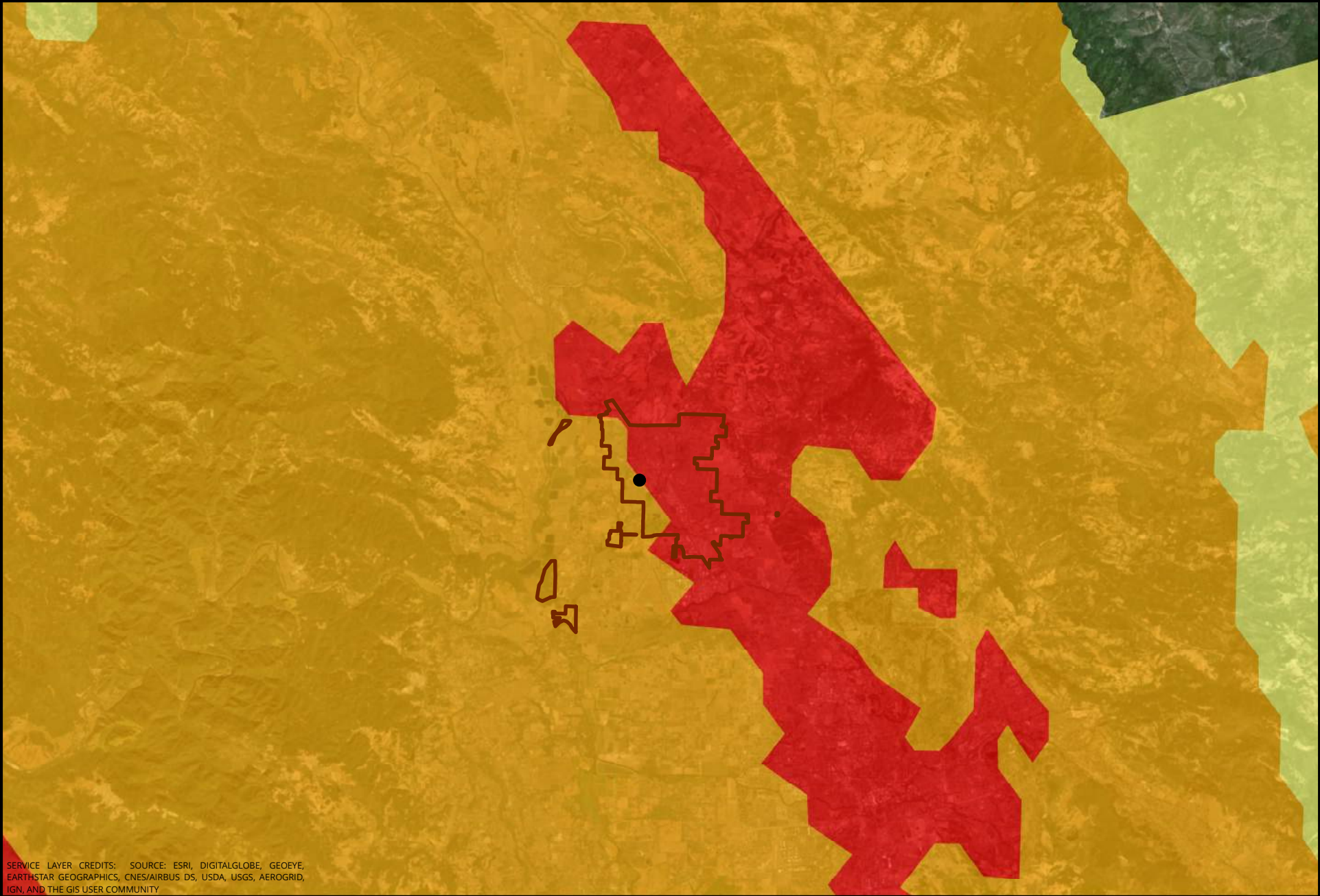
-  ALQUIST-PRIOLO FAULT ZONES
-  PROJECT LOCATION
-  TOWN OF WINDSOR



FIGURE C-5



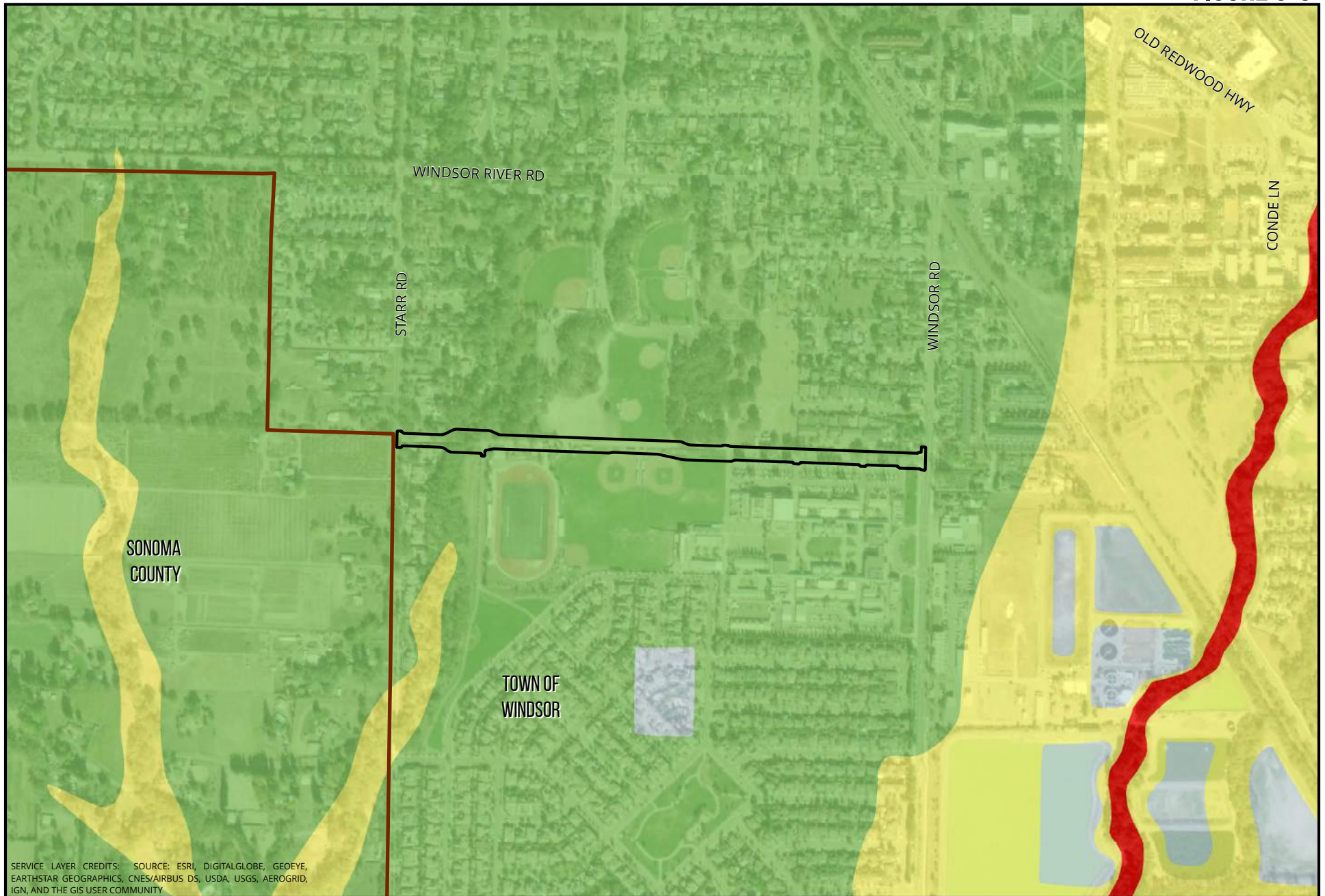
JAGUAR WAY EXTENSION: SHAKING HAZARD

0 1.5 3 6 Miles
Data source: Sonoma County GIS; Association of Bay Area Governments; CIGN

- MODIFIED MERCALLI INTENSITY MEASURE
- 7 - STRONG
 - 8 - VERY STRONG
 - 9 - VIOLENT
- PROJECT LOCATION
- TOWN OF WINDSOR



FIGURE C-6



SERVICE LAYER CREDITS: SOURCE: ESRI, DIGITALGLOBE, GEOEYE, EARTHSTAR GEOGRAPHICS, CNES/AIRBUS DS, USDA, USGS, AEROGRIID, IGN, AND THE GIS USER COMMUNITY.

JAGUAR WAY EXTENSION: LIQUEFACTION SUSCEPTIBILITY

0 0.05 0.1 0.2 Miles

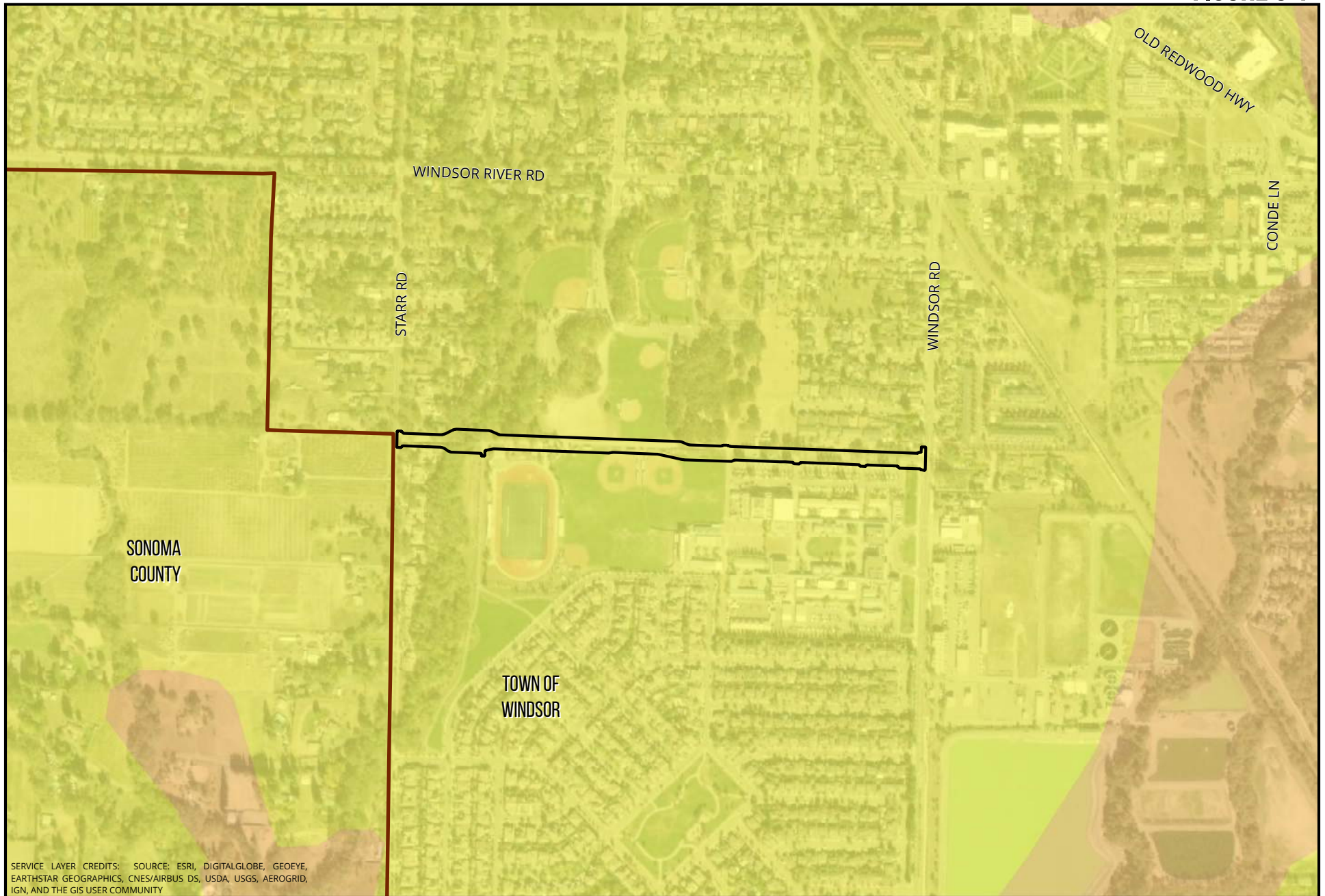
Data source: Sonoma County GIS; USGS

VERY LOW
MODERATE
VERY HIGH
WATER

PROJECT LIMITS
TOWN OF WINDSOR



FIGURE C-7



JAGUAR WAY EXTENSION: LANDSLIDE POTENTIAL

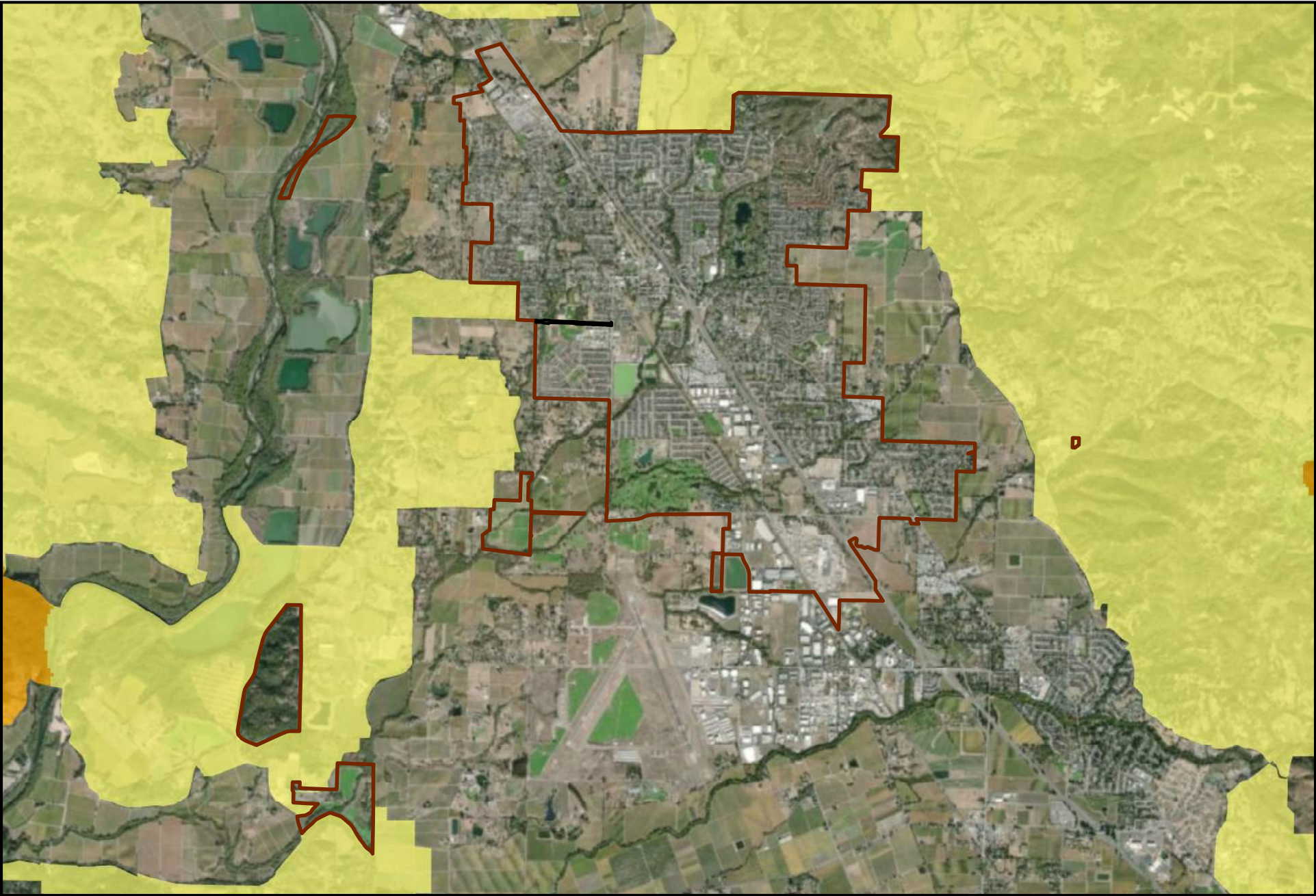
- VERY LOW - SURFICIAL DEPOSITS
- MODERATE - FEW LANDSLIDES
- PROJECT LIMITS
- TOWN OF WINDSOR

0 0.05 0.1 0.2 Miles

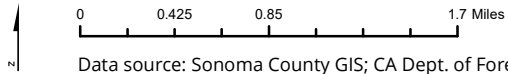
Data source: Sonoma County GIS; USGS



FIGURE C-8



JAGUAR WAY EXTENSION: FIRE HAZARD SEVERITY ZONES



Data source: Sonoma County GIS; CA Dept. of Forestry and Fire Protection

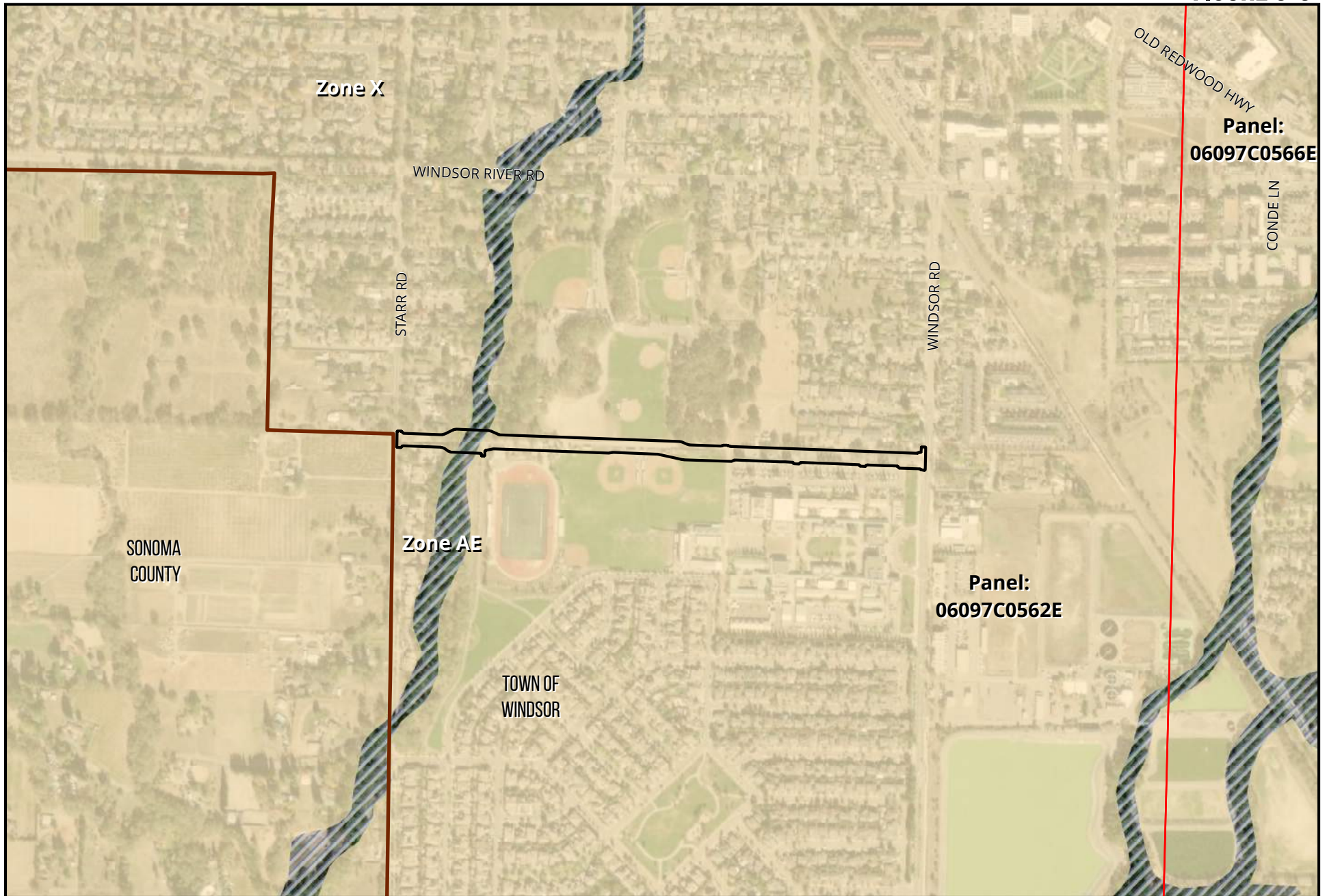
FHSZ IN STATE RESPONSIBILITY AREAS

- MODERATE
- HIGH
- VERY HIGH

- PROJECT LIMITS
- TOWN OF WINDSOR



FIGURE C-9



JAGUAR WAY EXTENSION: FEMA NATIONAL FLOOD HAZARD

0 0.05 0.1 0.2 Miles

~

Data source: Sonoma County GIS; FEMA 2017

0.2% ANNUAL CHANCE FLOOD HAZARD (X)

FLOODWAY (AE)

PROJECT LIMITS

TOWN OF WINDSOR

