



NOTICE OF EXEMPTION

TO:

Contra Costa County, County Clerk
555 Escobar Street
Martinez, CA 94553

FROM: (LEAD AGENCY)

EAST BAY MUNICIPAL UTILITY DISTRICT
Office of the Secretary
375 Eleventh Street, MS 806
Oakland, CA 94607-4240 510-287-0655

- ☒ Lead Agency is the Project Applicant
☒ Lead Agency is Public Agency Approving Project
☒ Lead Agency is Carrying Out Project

PROJECT INFORMATION

1. **TITLE:** Inline Water Treatment Plants Carbonic Acid Addition
2. **LOCATION:** (City, County, and specific location)
Orinda, Contra Costa County, Orinda WTP: 190 Camino Pablo, Orinda,
Lafayette, Contra Costa County, Lafayette WTP 3848 Mt. Diablo Blvd. Lafayette;
Walnut Creek, Contra Costa County, Walnut Creek WTP 2201 Larkey Ln.
3. **DESCRIPTION:**
Install a carbon dioxide storage tank and carbonic acid generation equipment at EBMUD's Water Treatment Plants in Orinda, Lafayette, and Walnut Creek to provide pH adjustment capability. See Attachment A for project details.

EXEMPTION FINDING (Check one)

This project is exempt from CEQA because:

1. ☐ Activity is not a project
2. ☐ Activity is Ministerial (Sec.21080(b)(1); Guideline 15268)
3. ☐ Activity is a Declared Emergency (Sec.21080(b)(3); Guideline 15269(a))
4. ☐ Activity is an Emergency Project (Sec.21080(b)(4); Guideline 15269(b)(c))
5. ☒ Activity is Categorically Exempt Under Guideline 15301
6. ☐ Activity is Statutorily Exempt Under Guideline
7. ☐ Reasons why project is exempt:

This project is exempt under Guideline 15301, since it involves negligible or no expansion of the facilities, and can be categorically exempt since it entails repair and minor alteration of an existing public facility.

INITIATING UNIT: 551**APPROVAL**

04/13/ 2020

Emily Sing

Michael Hartlaub

1. DATE PREPARED

2. PREPARED BY (initial)

3. REVIEWED BY (Unit Supv. initial)

Serge Terentieff

4. RECOMMENDED BY (Division/Section Manager)

Emily Sing

502

Associate Engineer

510-287-0655

5. CONTACT PERSON

MAIL SLOT #

TITLE

PHONE

NOTICE OF EXEMPTION APPROVED FOR FILING WITH THE COUNTY CLERK

05/07/20

DATE

DEPARTMENT DIRECTOR

5/14/20

DATE FORWARDED TO COUNTY CLERK

SECRETARY OF THE DISTRICT

Attachment A

INLINE WATER TREATMENT PLANTS CARBONIC ACID PROJECT

Project Description/Scope

The East Bay Municipal Utility District (EBMUD) has several water treatment plants (WTPs) and facilities to treat drinking water in EBMUD's service area. In Contra Costa County, plants include Orinda Water Treatment Plant (OWTP) and the in Orinda, Lafayette Water Treatment Plant (LWTP) in Lafayette, and Walnut Creek Water Treatment Plant (WCWTP) in Walnut Creek. Figure 1 shows a location map of the three project sites. The Inline WTP Carbonic Acid Addition Project will install a carbon dioxide storage tank, carbonic acid generation system, flow and analyzer equipment, and chemical piping at OWTP, WCWTP, and LWTP to provide pH adjustment capability. Each insulated gas storage tank and carbonic acid generation system will be situated outdoors on a leveled concrete pad. Additional civil improvements at LWTP and WCWTP will be needed to create space for the new equipment. Figure 2, Figure 3 and Figure 4 attached shows the site plan and location of planned improvements at OWTP, LWTP and WCWTP, respectively. The detailed work scope for each site is summarized below:

OWTP

- Carbon dioxide storage tank, situated on a concrete pad 74-ft by 26-ft wide.
- Skid mounted carbonic acid generation systems, situated on a 30 ft by 15-ft concrete pad

LWTP

- Carbon dioxide storage tank, approximately 16-ft tall, situated on a 19 ft by 10 ft. concrete pad
- Skid mounted carbonic acid generation systems, situated on a 21 ft by 19 ft concrete pad
- 65-ft long, 7-ft. retaining wall

WCWTP

- Carbon dioxide storage tank, situated on a concrete pad 74-ft by 26-ft wide.
- Skid mounted carbonic acid generation systems, situated on two approximately 22 ft by 17-ft concrete pads
- 100-ft long, 12-ft. tall retaining wall

Purpose/Justification

The Water Treatment Plants at Orinda, Walnut Creek and Lafayette do not have the capability to inject carbonic acid for pH adjustment. Providing the capability to adjust pH using carbonic acid, improves the operational performance, optimizes disinfection and ensures compliance with National Discharge Pollution Elimination System (NDPES) standards.

Site Characteristics

Orinda WTP

Contra Costa County

The Orinda WTP, located at 190 Camino Pablo in Orinda north of Highway 24 and east of Camino Pablo. EBMUD's property extends north of the treatment facilities and includes the undeveloped area north of the existing washwater settling basins and the Orinda Ballfields. The Orinda WTP is divided by Manzanita Drive, a public street. The WTP is bordered by the Orinda Ballfields to the north, Orinda Country Club to the south, residential properties and San Pablo Creek to the east, and Camino Pablo to the west.

Lafayette WTP

The Lafayette WTP, located at 3848 Mt Diablo Blvd in Lafayette. The EBMUD property boundary extends north from Mt. Diablo Blvd to the right-of-way of Highway 24 and east from El Nido Ranch Rd to the Temple Isaiah of Contra Costa County property.

Walnut Creek WTP

The Walnut Creek WTP, located at 2201 Larkey Ln in Walnut Creek. The Acalanes Ridge Open Space surrounds the EBMUD property to the south and west and is bordered by residences along Alfred Avenue to the east.

Permits

No permits are required for this project because all work will be performed on existing property or easements.

Schedule

Construction is scheduled to commence in Summer 2021. The estimated construction duration is approximately 12 months, and will span over three sites. Regular construction work hours will be 8 a.m. to 6 p.m., Monday through Friday.

Operational Impacts

None anticipated.

Public Impacts

All work will be completed within the existing WTP facilities. No road or lane closures are anticipated during construction. Standard construction environmental and safety practices applicable to all EBMUD construction projects have been incorporated into the Project. These standard practices minimize impacts to the public resulting from EBMUD construction projects.

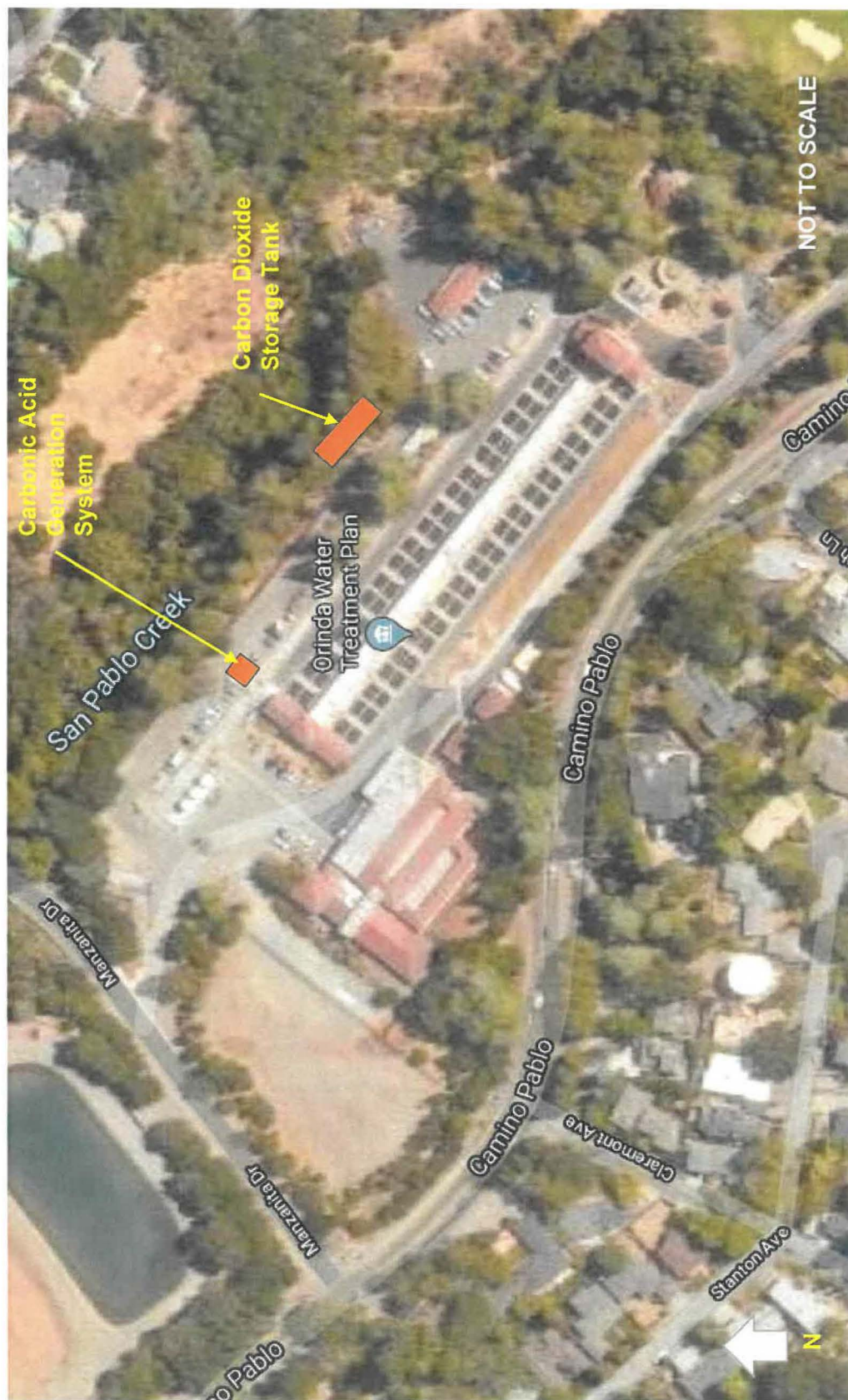


Figure 2: Orinda WTP Carbon Dioxide Storage Tank and Carbonic Acid Generation System Locations



Figure 3: Lafayette WTP Carbon Dioxide Storage Tank and Carbonic Acid Generation System Locations



Figure 4: Walnut Creek WTP Carbon Dioxide Storage Tank and Carbonic Acid Generation System Locations