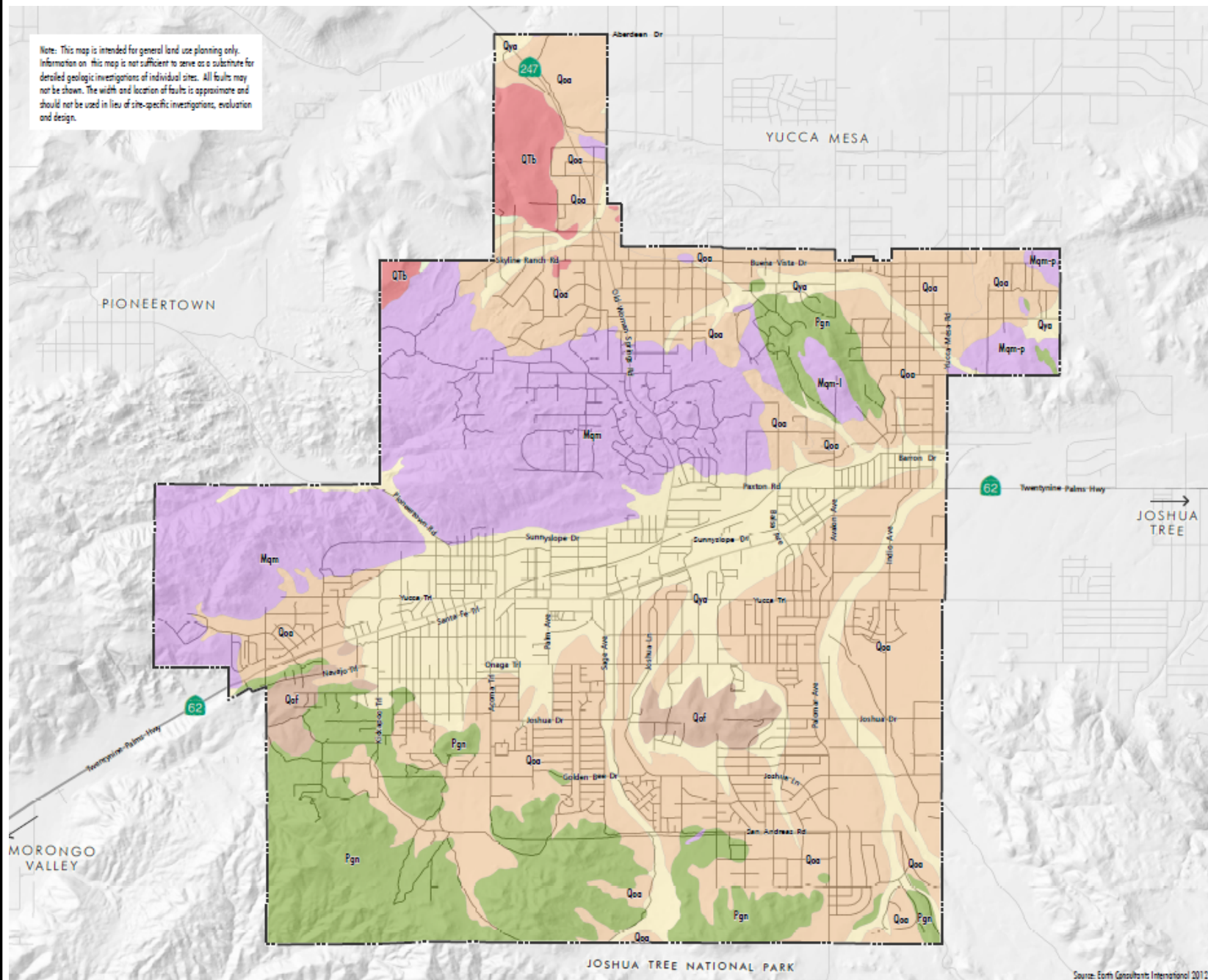


Note: This map is intended for general land use planning only. Information on this map is not sufficient to serve as a substitute for detailed geologic investigations of individual sites. All faults may not be shown. The width and location of faults is approximate and should not be used in lieu of site-specific investigations, evaluation and design.



GEOLOGIC MAP

- Surficial Sediments
 - Qya - Young Alluvium
 - Qoa - Older Alluvium
 - Qof - Very Old Alluvium
- Sedimentary Rock
 - Ts - Sandstone
- Igneous Rocks
 - QTb - Basalt
- Metamorphic Rocks
 - Mqm, Mqm-l, Mqm-p - Quartz Monzonite
 - Pgn - Gneissic Rocks
- Town Limits

Source: Draft Yucca Valley General Plan Update, Environmental Impact Report, SCH No. 2012111021, Volume I of II, August 2013, The Planning Center



Figure VII-1
Soils

Hi-Desert Water District
Phase II and Phase III
Sewer Collection System Project