

**607 Sand Point Road
Visual Resources Document**

1/8/2020

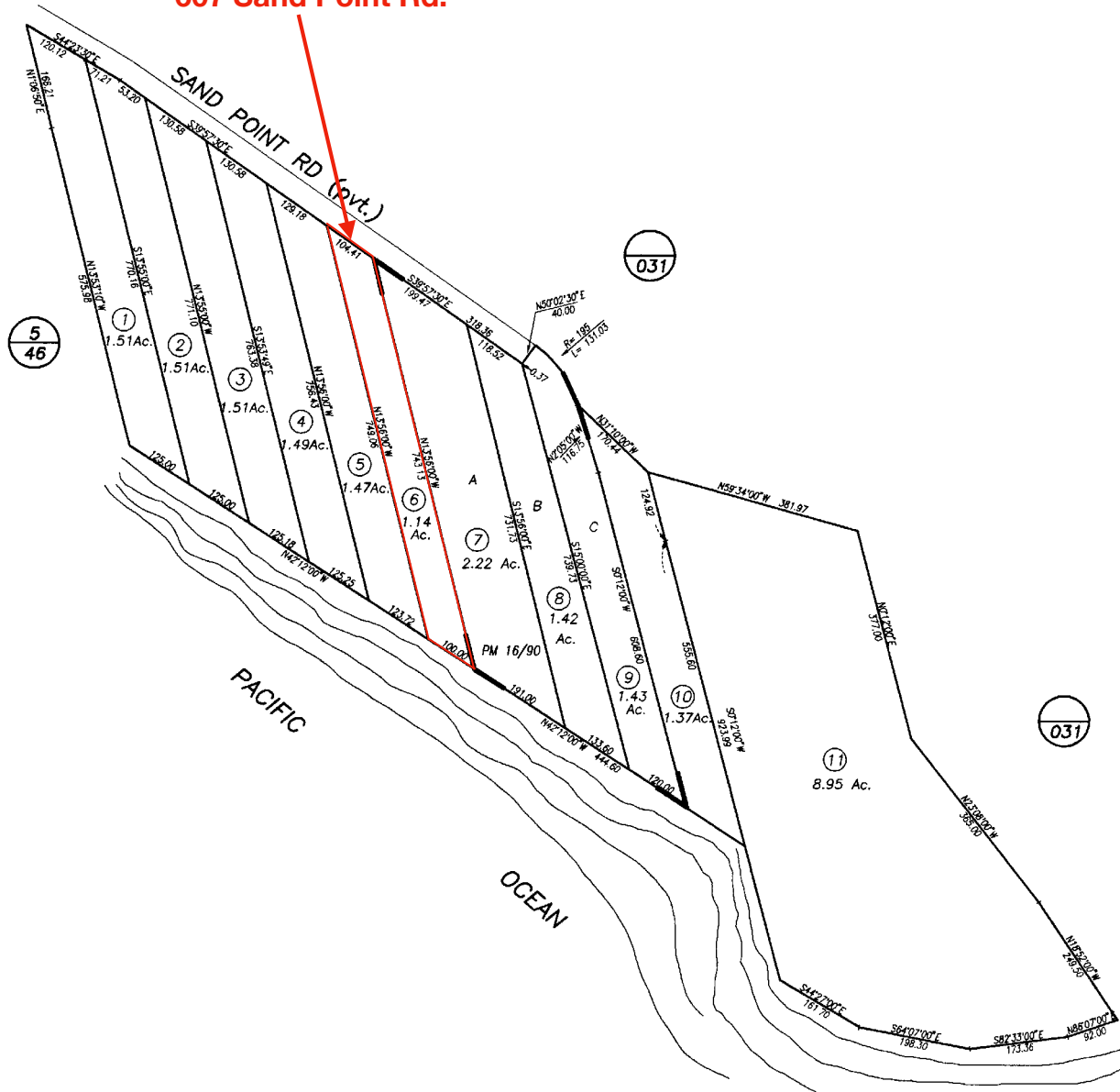


TWO TREES
ARCHITECT

607 Sand Point Rd.

PUEBLO LANDS

004-098



rotation = 15°
1" = 200
scale

NOTICE
Assessor Parcels are for tax assessment purposes only and do not indicate either parcel legality or a valid building site.

Assessor's Map Bk, 004-Pg, 098
County of Santa Barbara, Calif.

07/94 re-number from pg 3/40

Parcel Map

607 Sand Point Road
Visual Resources
1.8.20



607 Sand Point Rd.

Google Earth
© 2019 Google

Neighborhood Context

607 Sand Point Road
Visual Resources
1.8.20



Aerial View

607 Sand Point Road
Visual Resources
1.8.20



Photo Key:
View of Existing Residence

607 Sand Point Road
Visual Resources
1.8.20



**Image 1: Existing residence with proposed residence
outlined in red (from beach looking north)**



--- Visibility from road is obscured by vegetation or buildings

**Photo Key:
View From Public Roads**

607 Sand Point Road
Visual Resources
1.8.20



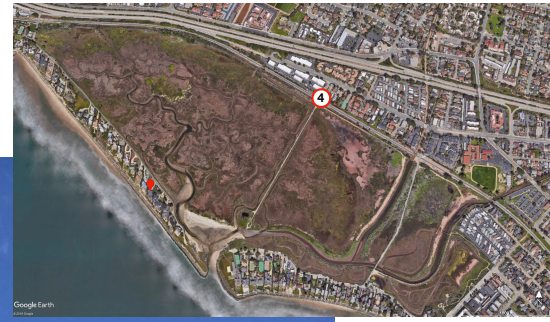
Image 1: 101S On-ramp at Santa Claus Ln.



**Image 2: View From Highway 101
Between Carp Ave. Exit and Santa Claus Ln.**



**Image 3: View From Highway 101S
Carpinteria Ave Exit**



**Image 4: View From end of Estero Street
(Marsh maintenance private access gate)**



**Image 5: View from end of
Carpinteria Marsh Park hiking trail**



Image 6: View from Carpinteria Marsh Park lookout area