

Sanger Unified School District
REQUEST FOR PRELIMINARY COMMENT
McCall K-12 Education Center Project

To:

Responsible, Trustee and Interested Agencies
Interested Persons

From:

Sanger Unified School District
Ryan Kilby, Chief Operations Officer
1905 Seventh Street
Sanger, CA 93675
Telephone: (559) 524-6521
Email: ryan_kilby@sangerusd.net

Date: April 1, 2020

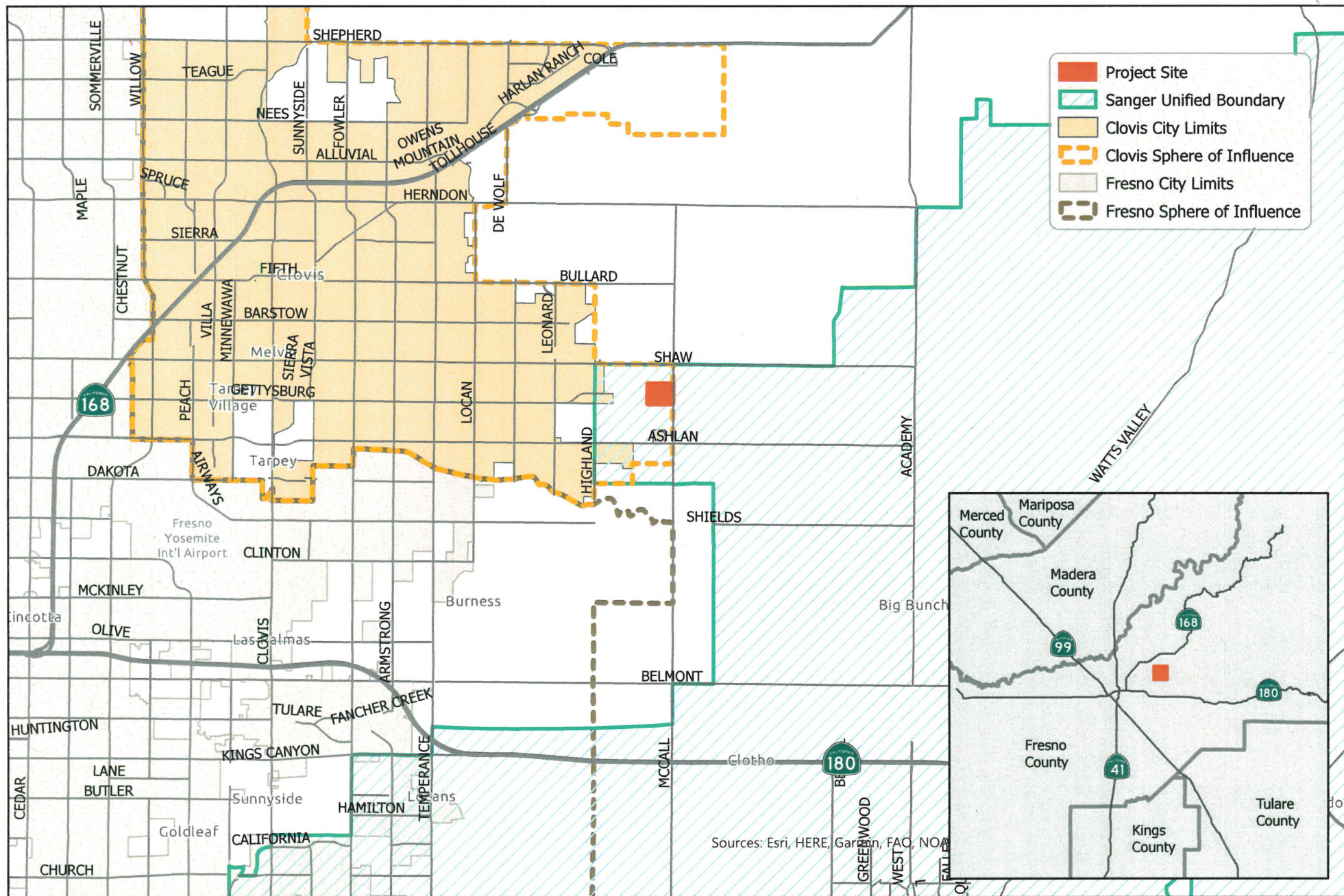
Purpose: The Sanger Unified School District (District) is proposing to undertake the McCall K-12 Education Center Project (project). The purpose of this Request for Preliminary Comment is to invite responsible, trustee and interested agencies, as well as interested persons, to submit written comments on any concerns they may have on the environmental effects of the project. The District will consider the comments in preparing a California Environmental Quality Act Initial Study for the project and in determining whether to prepare an Environmental Impact Report for the project or to adopt a Negative Declaration or Mitigated Negative Declaration. You will have the opportunity to comment again after you have reviewed the completed environmental documents.

Comments: Please send any comments in response to this Request for Preliminary Comment to Ryan Kilby at the contact information provided above. **The deadline for submission of comments is Friday, May 1, 2020.**

Project Location and Description: The project site is located on a 50.0-acre parcel on the west side of McCall Avenue at the alignment of Gettysburg Avenue, approximately 0.43 miles east of the nearest city limits of the City of Clovis in unincorporated Fresno County, California (Fresno County APN 571-011-12). The project is located within the City of Clovis Sphere of Influence and within the City's Loma Vista Specific Plan Area. The location of the project site is displayed on Figures 1 and 2.

The District is proposing to develop the McCall K-12 Education Center Project to serve the anticipated student enrollment growth generated by new urban development within the Sanger Unified portion of the City of Clovis Loma Vista Specific Plan (east of Highland Avenue). The project will be designed to provide capacity for approximately 800 students in grades K-8 and 250 students in grades 9-12. This campus will have an estimated 50 to 70 employees (including administrators, faculty, and support staff). Facilities planned as part of the project include administrative offices, classrooms, multi-purpose buildings, sport fields, physical education facilities, and parking areas. Instructional activities at the Education Center will be in regular session on weekdays from late August to early June, with additional special events and classes during evenings, on weekends, and during the summer recess.

Construction of the project will likely begin within the next five years to coincide with planned residential development in the area and funding availability.



Project Location

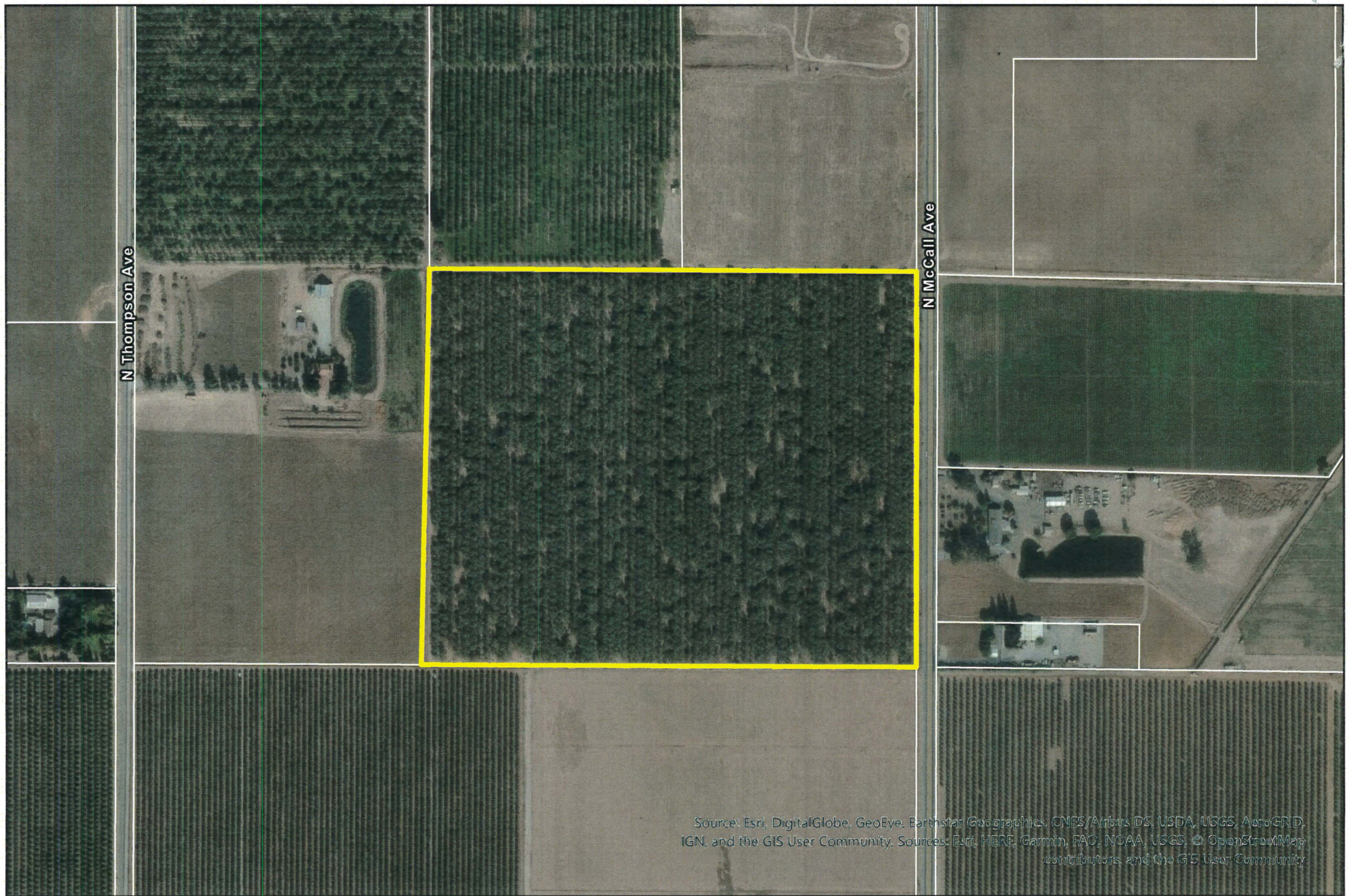
McCall K-12 Education Center Project
Sanger Unified School District

ODELL Planning & Research, Inc.
Environmental Planning • School Facility Planning • Demographics

0 0.5 1 2
Miles



Figure 1



Project Site

McCall K-12 Education Center Project
Sanger Unified School District

ODELL Planning & Research, Inc.
Environmental Planning • School Facility Planning • Demographics

Fresno County Parcels
Project Site

0 125 250 500
Feet



Figure 2