

Sanger Unified School District
REQUEST FOR PRELIMINARY COMMENT
New Southeast Fresno Elementary School Project

To:

Responsible, Trustee and Interested Agencies
Interested Persons

From:

Sanger Unified School District
Ryan Kilby, Chief Operations Officer
1905 Seventh Street
Sanger, CA 93675
Telephone: (559) 524-6521
Email: ryan_kilby@sangerusd.net

Date: April 1, 2020

Purpose: The Sanger Unified School District (District) is proposing to undertake the New Southeast Fresno Elementary School Project (project). The purpose of this Request for Preliminary Comment is to invite responsible, trustee, and interested agencies, as well as interested persons, to submit written comments on any concerns they may have on the environmental effects of the project. The District will consider the comments in preparing a California Environmental Quality Act Initial Study for the project and in determining whether to prepare an Environmental Impact Report for the project or to adopt a Negative Declaration or Mitigated Negative Declaration. You will have the opportunity to comment again after you have reviewed the completed environmental documents.

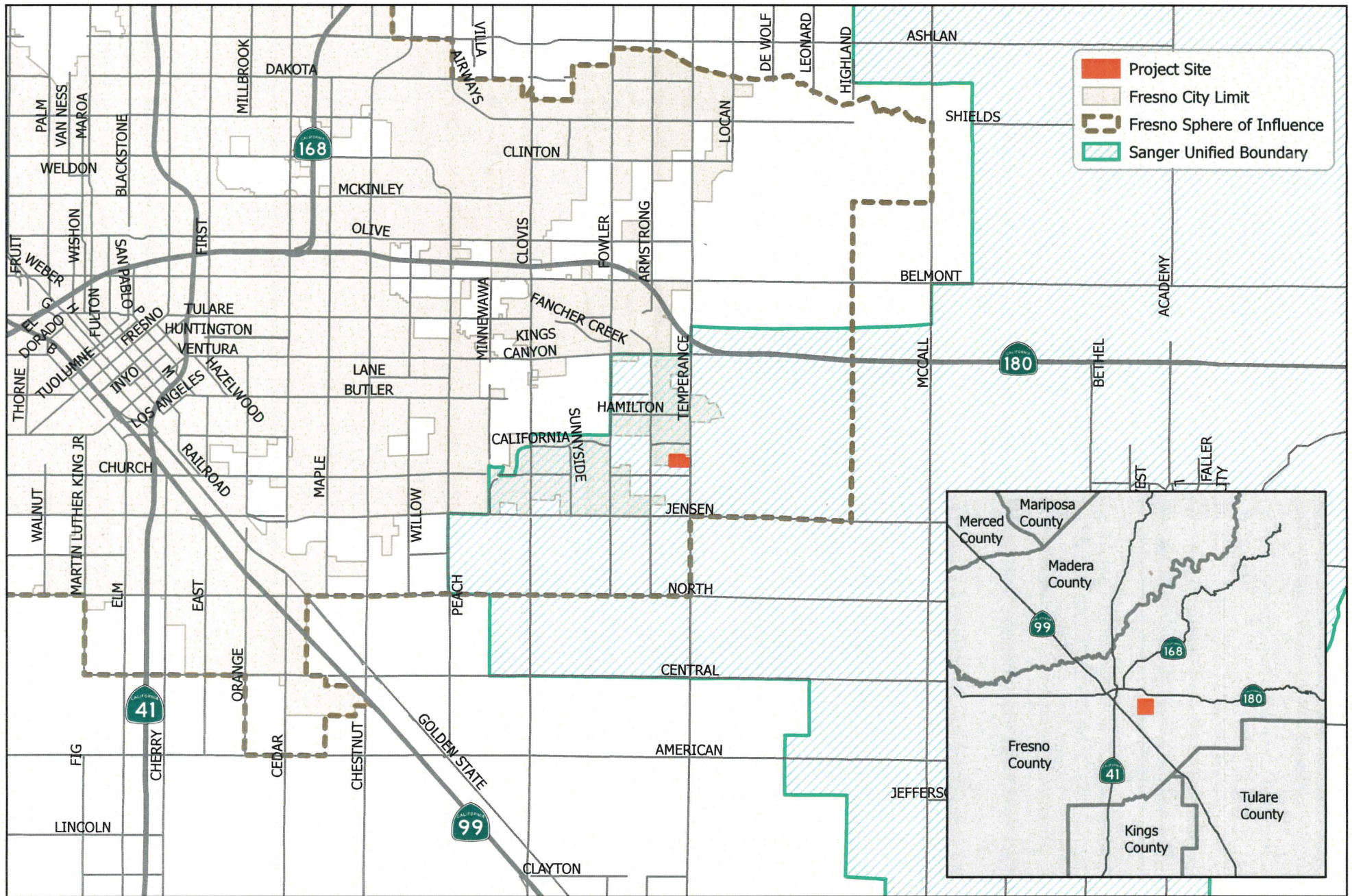
Comments: Please send any comments in response to this Request for Preliminary Comment to Ryan Kilby at the contact information provided above. **The deadline for submission of comments is Friday, May 1, 2020.**

Project Location and Description: The project site encompasses 17.93 acres located on the west side of Temperance Avenue approximately 700 feet north of Church Avenue in an unincorporated portion of Fresno County, California (APNs 316-160-46 and 316-160-72). The site is immediately adjacent to the City of Fresno's city limits and is within the Fresno Sphere of Influence. The location of the project site is displayed on Figures 1 and 2.

The District is proposing to develop the New Southeast Fresno Elementary School Project to serve the anticipated student enrollment growth generated by new urban development within southeast Fresno. The proposed elementary school will be designed to provide capacity for approximately 700 students in kindergarten through sixth grades. This campus will have approximately 45 employees (including administrators, faculty, and support staff). Facilities planned as part of the project include administrative offices, classrooms, a multi-purpose building, sport fields, physical education facilities, and parking areas. Instructional activities at the elementary school will be in regular session on weekdays from late August to early June, with additional special events and classes during evenings, on weekends, and during the summer recess.

The project includes the annexation of the site to the City of Fresno. It is anticipated that the project will be served by the City of Fresno's water and sewer systems.

Construction of the project will likely begin within the next five years to coincide with planned residential development in the area and funding availability.



Project Location

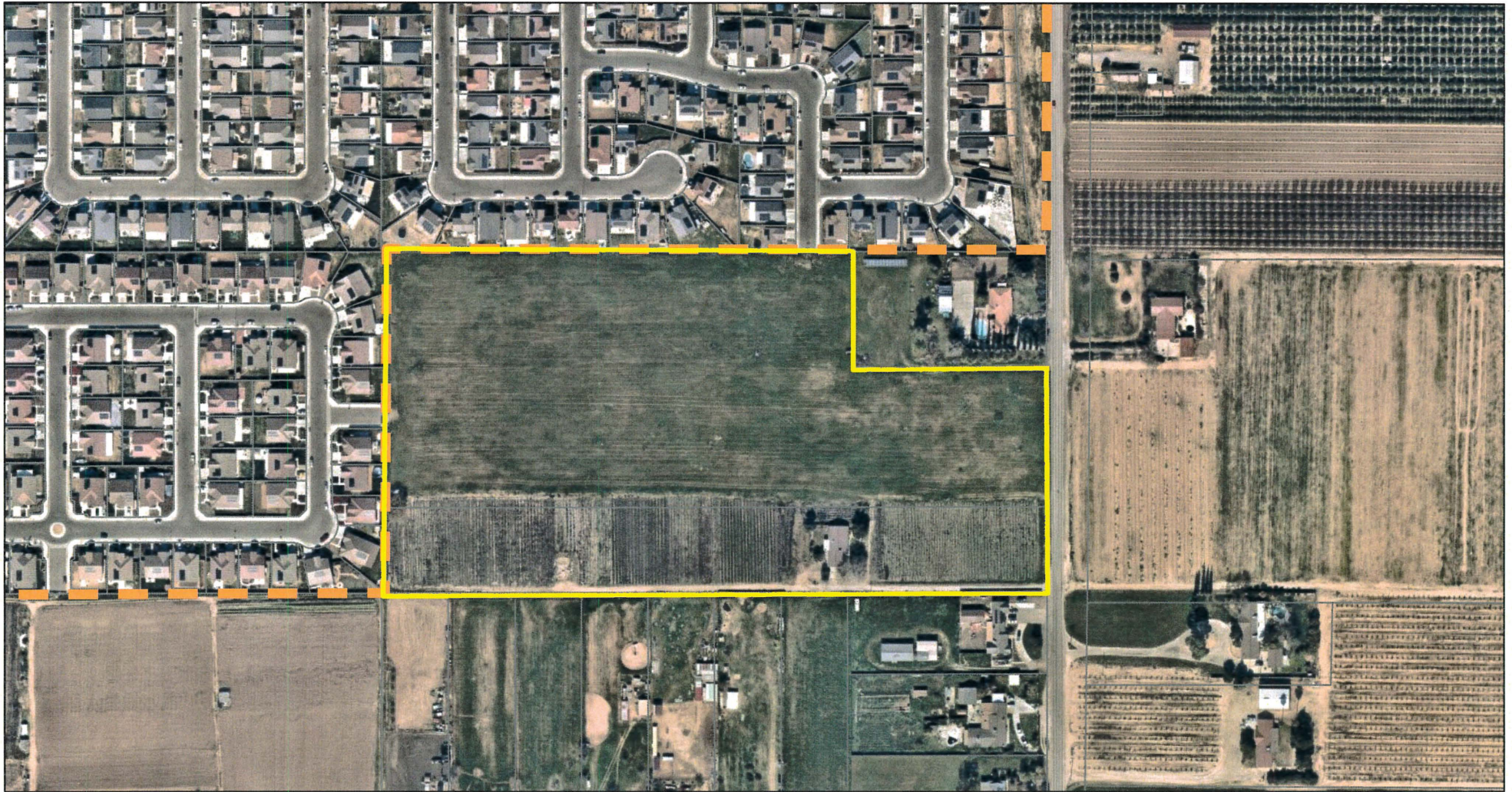
New Southeast Fresno Elementary School Project
Sanger Unified School District

ODELL Planning & Research, Inc.
Environmental Planning • School Facility Planning • Demographics

0 0.5 1 2
Miles



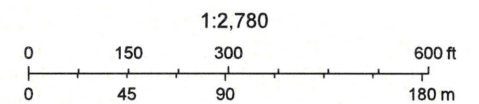
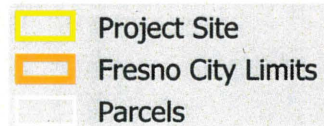
Figure 1



Project Site

New Southeast Fresno Elementary School Project
Sanger Unified School District

ODELL Planning & Research, Inc.
Environmental Planning • School Facility Planning • Demographics



Copyright nearmap 2015

Web AppBuilder for ArcGIS
Copyright nearmap 2015 |

Figure 2