

APPENDICES

Appendix A – Plan Sheets for the San Bernardino Bike Trail Project

Appendix B – Visual Resources Technical Memorandum

Appendix C – Invasive Plant Risk Assessment (IPRA)

Appendix D – Natural Environment Study (NES)

Appendix E – Sierra Nevada Yellow-Legged Frog Site Assessment

Appendix F – Aquatic Resources Delineation Report

Appendix G – Historic Property Survey Report (HPSR)

Appendix H – Feasibility Report

Appendix I – Preferred Alternative Memorandum

Appendix J – Geotechnical Report

APPENDIX A

PLAN SHEETS FOR THE SAN BERNARDINO BIKE TRAIL PROJECT

INDEX OF SHEETS		
SHEET NO.	SHEET NAME	TITLE
1	i	TITLE SHEET
2	ii	GENERAL NOTES, ABBREVIATIONS, AND LEGEND
X	L-1	LAYOUT STA 10+ 00 - 14+00
X	L-2	LAYOUT STA 14+00 - 18+00
X	L-3	LAYOUT STA 18+00 - XX+XX
X	C-1	CONSTRUCTION DETAILS
X	EC-1	TEMPORARY EROSION CONTROL PLAN
X	EC-2	TEMPORARY EROSION CONTROL DETAILS
X	PD-1	SIGNING AND PAVEMENT DELINEATION
X	PD-2	SIGNING AND PAVEMENT DELINEATION
X	PD-3	SIGNING AND PAVEMENT DELINEATION

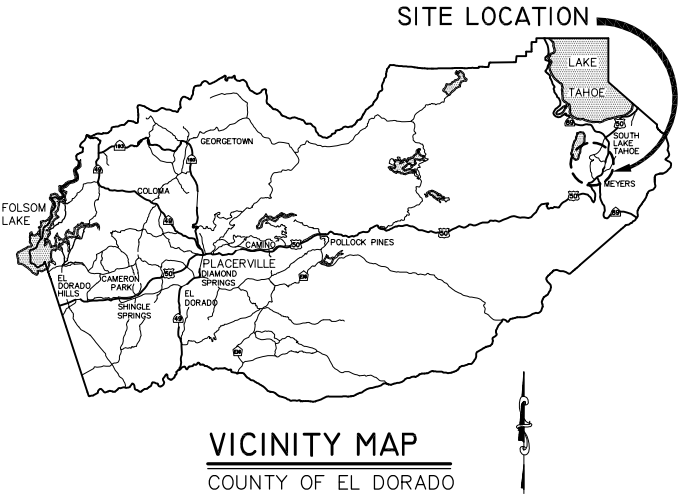
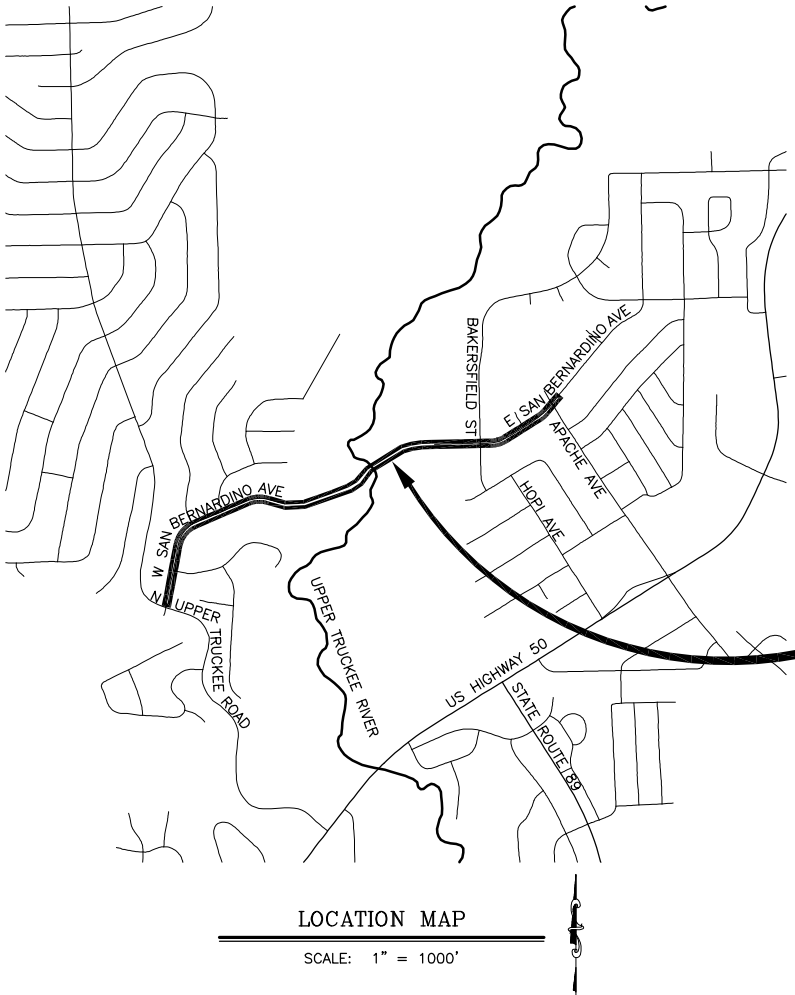
COUNTY OF EL DORADO, CA
DEPARTMENT OF TRANSPORTATION

PROJECT PLANS FOR THE CONSTRUCTION OF THE 2021

SAN BERNARDINO CLASS 1
BIKE TRAIL PROJECT

IN THE COUNTY OF EL DORADO, DISTRICT 5,
PORTION OF SEC 29, PORTION OF EAST 1/4 SEC 30, PORTION OF
SOUTH 1/4 SEC 20, T12N, R18E, MDM

To be supplemented with 2015 Standard Plans and Specifications of the
California Department of Transportation, unless otherwise noted.



FUNDING AGENCY
CONGESTION MITIGATION AND AIR QUALITY PROGRAM
TAHOE REGIONAL PLANNING AGENCY

CONTRACTOR'S LICENSE CLASSIFICATION: Bidders shall be properly licensed to perform the Work pursuant to the State Contractor's License Law (Business and Professions Code section 7000 et seq.) and shall possess a CLASS A LICENSE or equivalent combination of Classes required by the categories and type of Work included in the Contract Documents and Plans, at the time the Contract is awarded, and shall maintain a valid license through completion and acceptance of the Work including guarantee and warranty period. If the Contractor possesses a Class A license instead of the equivalent combination of Classes required by the categories and type of work included in the Contract Documents and Plans, then the Contractor or a subcontractor must also possess a CLASS C27 "Landscaping Contractor" license. Failure of the successful Bidder to obtain proper and adequate licensing for an award of the Contract shall constitute a failure to execute the Contract, and shall result in forfeiture of the Bidders security.

REVISIONS		
MARK	DATE	BY



SUBMITTED BY: DONALDO S. PALAROAN P.E. DATE MONTH XX, 20XX
SENIOR CIVIL ENGINEER
STATE OF CALIFORNIA NO. C66083

BOARD OF SUPERVISORS	
JOHN HIDAHL	I
SHIVA FRENTZEN	II
BRIAN K. VEERKAMP	III
LORI PARLIN	IV
SUE NOVASEL	V

COUNTY OF EL DORADO
DEPARTMENT OF TRANSPORTATION
(530) 573-7900
924 B EMERALD BAY ROAD 2850 FAIRLANE CT
SOUTH LAKE TAHOE, CA 96150

ADOPTED AND APPROVED BY:	DATE
BRIAN K. VEERKAMP CHAIR, EL DORADO COUNTY BOARD OF SUPERVISORS	
APPROVED BY:	DATE
RAFAEL MARTINEZ, DIRECTOR DEPARTMENT OF TRANSPORTATION	
JOHN H. KAHNIG, P.E. NO. C59126 DEPUTY DIRECTOR, ENGINEERING	

CONTRACT NO. ????, CIP NO. 95117	SAN BERNARDINO CLASS I BIKE TRAIL PROJECT TITLE SHEET
	SHEET I OF ?

GENERAL NOTES

3. ALL IMPROVEMENTS WILL BE ACCOMPLISHED UNDER THE APPROVAL, INSPECTION, AND TO THE SATISFACTION OF THE COUNTY OF EL DORADO DEPARTMENT OF TRANSPORTATION (DOT). IMPROVEMENT CONSTRUCTION MUST COMPLY WITH THESE PLANS AND THE 2015 CALTRANS STANDARD PLANS, UNLESS NOTED OTHERWISE. ALL REFERENCES TO THE "STANDARD SPECIFICATIONS" MEAN THE STATE OF CALIFORNIA, DEPARTMENT OF TRANSPORTATION (CALTRANS) 2015 STANDARD SPECIFICATIONS. CONSTRUCTION NOT SPECIFIED ON THESE PLANS OR IN SPECIFIC COUNTY OF EL DORADO (COUNTY) ORDINANCES MUST CONFORM TO THE REQUIREMENTS OF THE STANDARD SPECIFICATIONS. YOU ARE OBLIGATED TO BE FAMILIAR WITH APPLICABLE SECTIONS OF THE STANDARD SPECIFICATIONS NOT DISCUSSED IN THE GENERAL NOTES. THE CONTRACT SPECIAL PROVISIONS SUPERSEDE THE STANDARD SPECIFICATIONS WHERE DISCREPANCIES OCCUR.
2. CONSTRUCTION HOURS WILL BE WEEKDAYS BETWEEN 8:00 A.M. AND 6:30 P.M. UNLESS PRIOR APPROVAL IS RECEIVED FROM DOT.
3. THE LOCATIONS AND EXTENT OF UNDERGROUND UTILITIES IN THE WORK AREA AS SHOWN ARE APPROXIMATE AND ARE NOT NECESSARILY COMPLETE. A REASONABLE EFFORT HAS BEEN MADE TO LOCATE AND DELINEATE UTILITIES BASED UPON AVAILABLE RECORDS. YOU MUST DETERMINE THE TYPE, LOCATION, SIZE, AND/OR DEPTH OF THE UTILITIES WITHIN THE WORK AREA BEFORE STARTING WORK. YOU OR ANY SUBCONTRACTOR FOR THIS CONTRACT ARE RESPONSIBLE FOR DAMAGES DUE TO THE FAILURE TO EXACTLY LOCATE AND PRESERVE UNDERGROUND UTILITIES. YOU MUST CONTACT UNDERGROUND SERVICE ALERT AT (800) 642-2444 AT LEAST 48 HOURS BEFORE ANY CONSTRUCTION. YOU ASSUME COMPLETE RESPONSIBILITY FOR DAMAGED UTILITIES.
4. UNLESS SHOWN OTHERWISE, YOU ARE RESPONSIBLE FOR THE PROTECTION OF ALL EXISTING SURVEY MONUMENTS AND OTHER SURVEY MARKERS, INCLUDING CONSTRUCTION STAKES DURING CONSTRUCTION AND YOU ARE RESPONSIBLE FOR THE COST TO REPLACE ANY SUCH SURVEY MONUMENTS, MARKERS, OR STAKES.
5. YOU WILL PROVIDE ALL LIGHTS, SIGNS, BARRICADES, FLAGGERS, PILOT CAR, OR OTHER DEVICES NECESSARY TO CONTROL TRAFFIC THROUGH THE JOB SITE AND FOR PUBLIC SAFETY UNDER THESE PLANS, THE STANDARD SPECIFICATIONS, AND CALIFORNIA MANUAL ON UNIFORM TRAFFIC CONTROL DEVICES (MUTCD).
6. YOU AGREE TO ASSUME SOLE RESPONSIBILITY FOR JOB SITE CONDITIONS DURING THE COURSE OF THE WORK, INCLUDING SAFETY OF ALL PERSONS AND PROPERTY, AND FURTHER AGREE THAT THIS REQUIREMENT APPLIES CONTINUOUSLY AND IS NOT LIMITED TO NORMAL WORKING HOURS UNDER THE CONTRACT AND STANDARD SPECIFICATIONS.
7. THERE WILL BE NO GRADING OR LAND DISTURBANCE BETWEEN OCTOBER 15 AND MAY 1 UNLESS APPROVALS ARE OBTAINED FROM THE TAHOE REGIONAL PLANNING AGENCY (TRPA), AS PROVIDED IN THE LIMITED EXEMPTION DESCRIBED IN CHAPTER 64, SUBSECTION 64.2.B. OF THE TRPA CODE OF ORDINANCES. APPROVALS FOR GRADING BETWEEN OCTOBER 15 AND MAY 1 MUST ALSO BE OBTAINED FROM THE LAHONTAN REGIONAL WATER QUALITY CONTROL BOARD. IF REQUIRED, DOT WILL OBTAIN THESE APPROVALS.
8. YOU WILL MAINTAIN A SET OF PLANS ON THE JOB SITE SHOWING "AS-CONSTRUCTED" CHANGES MADE TO DATE. UPON COMPLETION OF THE WORK, YOU WILL GIVE TO THE COUNTY A SET OF PLANS, MARKED UP TO THE SATISFACTION OF DOT, REFLECTING THE AS-CONSTRUCTED MODIFICATIONS.
9. ALL CONTROL STATIONING AND DATA DIMENSIONING REFERENCE THE CENTERLINE OF THE FACILITY SHOWN, UNLESS NOTED OTHERWISE.
10. YOU WILL NOT CLOSE OFF ANY UTILITY LINES OR OPEN VALVES OR TAKE ANY OTHER ACTION WHICH WOULD AFFECT THE OPERATION OF WATER OR SEWER SYSTEMS WITHOUT APPROVAL FROM THE SOUTH TAHOE PUBLIC UTILITY DISTRICT (STPUD). APPROVAL MUST BE REQUESTED AT LEAST 48 HOURS BEFORE INTERRUPTION OF THE UTILITY SERVICE IS REQUIRED. ANY INTERRUPTION TO ACTIVE WATER OR SEWER SERVICES, INCLUDING FIRE HYDRANTS, WHETHER INTENTIONAL OR NOT, MUST BE KEPT TO A MINIMUM TIME PERIOD. IF SERVICE TO BUILDINGS IS TO BE OFF FOR MORE THAN FOUR HOURS, YOU MUST ADVISE STPUD.
11. YOU ARE REQUIRED TO IMPLEMENT DUST CONTROL MEASURES TO ENSURE THAT DUST RESULTING FROM YOUR ACTIVITIES IS CONTROLLED AND COMPLIES WITH THE PROVISIONS OF SECTION 7, "LEGAL RELATIONS AND RESPONSIBILITY TO THE PUBLIC," AND SECTION 14, "ENVIRONMENTAL STEWARDSHIP," OF THE STANDARD SPECIFICATIONS, COUNTY, AND LOCAL ORDINANCES.
12. YOU ARE RESPONSIBLE FOR IMPLEMENTING ALL TEMPORARY EROSION CONTROL MEASURES. THE TEMPORARY EROSION CONTROL MEASURES MUST COMPLY WITH THE TRPA "HANDBOOK OF BEST MANAGEMENT PRACTICES" AND THE STORM WATER POLLUTION PREVENTION PLAN (SWPPP). DOT WILL CONTACT TRPA BEFORE THE START OF THE WORK FOR A PRE-GRADE INSPECTION OF THE INSTALLED TEMPORARY EROSION CONTROL FACILITIES. YOU ARE RESPONSIBLE FOR THE MAINTENANCE AND PERFORMANCE OF THE TEMPORARY EROSION CONTROL MEASURES THROUGHOUT THE DURATION OF THE WORK.
13. CONSTRUCTION LIMITS SHOWN DELINEATE THE BOUNDARIES FOR YOUR ACTIVITIES BEYOND THE COUNTY ROAD RIGHT-OF-WAY. TEMPORARY FENCE (TYPE ESA) MUST BE ERECTED ALONG THESE BOUNDARIES BEFORE WORK STARTS. VEGETATION WITHIN THESE LIMITS MUST BE PROTECTED TO THE EXTENT FEASIBLE. ALL TREES MUST BE PROTECTED UNLESS SHOWN TO BE REMOVED.
14. UNLESS NOTED OTHERWISE, ALL REVEGETATION IS TO BE COMPLETED BY OTHERS.
15. YOU WILL ONLY USE THE DESIGNATED SITES SHOWN FOR STORAGE OF EQUIPMENT AND MATERIALS. YOU ARE RESPONSIBLE FOR THE SECURITY OF EQUIPMENT AND MATERIALS.
16. IT IS YOUR AND YOUR SUBCONTRACTOR(S) RESPONSIBILITY TO EXAMINE THE JOB SITE BEFORE THE OPENING OF BID PROPOSALS. YOU MUST BECOME FAMILIAR WITH THE NATURE AND LOCATION OF THE WORK AND THE GENERAL AND LOCAL CONDITIONS, PARTICULARLY THOSE AFFECTING THE AVAILABILITY OF TRANSPORTATION, THE DISPOSAL, HANDLING, AND STORAGE OF MATERIALS, AVAILABILITY OF LABOR, WATER, ELECTRICITY, ROADS, THE UNCERTAINTIES OF WEATHER, THE CONDITIONS OF THE GROUND, SURFACE AND SUBSURFACE MATERIALS, THE EQUIPMENT AND FACILITIES NEEDED FOR AND DURING THE PERFORMANCE OF THE WORK. FAILURE BY YOU OR YOUR SUBCONTRACTOR(S) TO ACQUAINT YOURSELVES WITH THE INFORMATION AVAILABLE WILL NOT RELIEVE YOU OR YOUR SUBCONTRACTOR(S) FROM RESPONSIBILITY FOR PROPERLY ESTIMATING THE DIFFICULTY AND COST OF SUCCESSFULLY PERFORMING THE WORK.
17. ELEVATIONS FOR PIPE INVERTS, FLOWLINES, TOPS OF GRATES, RIMS, ETC., ARE BASED ON THE TOPOGRAPHIC INFORMATION SHOWN. YOU WILL VERIFY ALL NECESSARY SURFACE ELEVATIONS IN THE FIELD AND NOTIFY THE DOT OF ANY DISCREPANCIES WHICH MIGHT AFFECT THE OPERATION OF THE NEW FACILITIES BEFORE BREAKING GROUND FOR THE INSTALLATION. DOT MUST BE CONTACTED IF ELEVATIONS ARE INCORRECT SO PROPER ADJUSTMENTS CAN BE MADE BEFORE THE INSTALLATION OF THE FACILITIES.
18. EXCEPT FOR THOSE OBTAINED BY DOT, YOU MUST OBTAIN, AT YOUR EXPENSE, ALL PERMITS, LICENSES, INSURANCE POLICIES, ETC., NECESSARY TO COMPLY WITH STATE AND LOCAL LAWS ASSOCIATED WITH THE PERFORMANCE OF THE WORK.
19. YOU ARE RESPONSIBLE TO REVIEW THE CONTRACT DOCUMENTS FOR SUBMITTALS REQUIRED FOR COUNTY REVIEW AND ACCEPTANCE.
20. THE COUNTY WILL PROVIDE CONSTRUCTION STAKING IN COMPLIANCE WITH SECTION 5-1.26 OF THE STANDARD SPECIFICATIONS.
21. THE PLANS SHOW SLOPE LENGTHS FOR PIPE ROUNDED TO THE NEAREST FOOT. ALL PIPE LENGTHS AND INVERT ELEVATIONS SHOWN ON THE PLANS ARE TO THE CENTERLINE OF THE STRUCTURES TO WHICH THE PIPES ARE ATTACHED. SEE THE STANDARD SPECIFICATIONS FOR THE MAXIMUM ALLOWABLE DEFLECTION ANGLE AT EACH PIPE JOINT.
22. YOU ARE RESPONSIBLE TO MAINTAIN THE GRADING LIMITS AS SHOWN ON THE PLANS, DETAILS, CROSS SECTIONS, AND AS DIRECTED BY THE ENGINEER.

ABBREVIATIONS

NOTE: LOWER CASE TEXT WITHIN PLAN SET INDICATES EXISTING

Δ	DELTA = DEFLECTION ANGLE	MAT'L	MATERIAL
A	ARCH OR ASPEN	MISC	MISCELLANEOUS
AB	AGGREGATE BASE	MOC	MID POINT ON CURVE
ABAND	ABANDONED	MOD	MODIFIED
ABC	ARTICULATED BLOCK CHANNEL	N	NORTH
AC	ASPHALT CONCRETE	NIC	NOT IN CONTRACT
AP	ANGLE POINT	NGVD	NATIONAL GEODETIC VERTICAL DATUM
APN	ASSESSOR'S PARCEL NUMBER	NTS	NOT TO SCALE
BC	BEGIN CURVE	OAE	OR APPROVED EQUAL
BCR	BEGIN CURB RETURN	OC	ON CENTER
BGN	BEGIN	OD	OUTSIDE DIAMETER
BLC	BLANKET-LINED CHANNEL	OG	ORIGINAL GROUND
BV	BAY VIEW	OH	OVERHEAD
BVCE	BEGIN VERTICAL CURVE ELEVATION	OVEREX OR O/X	OVEREXCAVATION
BVCS	BEGIN VERTICAL CURVE STATION	P	PINE
C	CEDAR	PC	POINT OF BEGINNING OF CURVE
CALCS	CALCULATIONS	PCC	PORTLAND CEMENT CONCRETE OR POINT OF COMPOUND CURVE
CATV	CABLE TELEVISION	PERF	PERFORATED
CC	CENTER TO CENTER	PL	PROPERTY LINE
CF	CUBIC FEET OR CURB FACE	PCVCE	POINT OF COMPOUND VERTICAL CURVE ELEVATION
CHD	CHORD DIRECTION	PCVCS	POINT OF COMPOUND VERTICAL CURVE STATION
CIR	CIRCLE	POR	PORTION
CL	CENTERLINE	PRVCE	POINT OF REVERSE VERTICAL CURVE ELEVATION
CL	CLASS OR CENTERLINE	PRVCS	POINT OF REVERSE VERTICAL CURVE STATION
CLR	CLEAR	PP	POWER/UTILITY POLE
CO	CURB OPENING OR CLEANOUT	PRC	POINT OF REVERSE CURVE
CO.	COUNTY	PROP	PROPOSED
CONC	CONCRETE	PT	POINT OR POINT OF TANGENCY
CONST	CONSTRUCT	PUE	PUBLIC UTILITY EASEMENT
CMP	CORRUGATED METAL PIPE	PVC	POLYVINYL CHLORIDE
CR	CEDAR RIDGE	PVIE	POINT OF VERTICAL INTERSECTION ELEVATION
CSP	CORRUGATED STEEL PIPE	PVIS	POINT OF VERTICAL INTERSECTION STATION
CT	CALTRANS OR COURT	PVMT	PAVEMENT
CTC	CALIFORNIA TAHOE CONSERVANCY	R	RADIUS
CY	CUBIC YARD	R&R	REMOVE & REPLACE
C&G	CURB AND GUTTER	RC	RELATIVE COMPACTION
D	DEPTH	RCP	REINFORCED CONCRETE PIPE
DBL	DOUBLE	RD	ROAD
DET	DETAIL	REF	REFERENCE
DI	DRAINAGE INLET OR DUCTILE IRON	REQ'D	REQUIRED
DIA OR Ø	DIAMETER	RLC	ROCK-LINED CHANNEL
DISS	DISSIPATOR	ROW	RIGHT-OF-WAY
DR	DRIVE	RSP	ROCK SLOPE PROTECTION
D/W	DRIVEWAY	RT	RIGHT
E	EAST	RW	RETAINING WALL
EA	EACH	S	SOUTH OR SANITARY SEWER
EC	END OF CURVE	SCO	SEWER CLEAN OUT
ECR	END OF CURB RETURN	SD	STORM DRAIN
ELEV	ELEVATION	SDMH	STORM DRAIN MANHOLE
ELEC	ELECTRIC	SED FB	SEDIMENT FOREBAY
ENGR	ENGINEER	SEZ	STREAM ENVIRONMENT ZONE
EP	EDGE OF PAVEMENT	SF	SQUARE FEET
ESA	ENVIRONMENTALLY SENSITIVE AREA	SHT	SHEET
ESMT	EASEMENT	SL	SLOPE LENGTH
EVCE	END VERTICAL CURVE ELEVATION	SMH	SEWER MANHOLE
EVCS	END VERTICAL CURVE STATION	ST	SEDIMENT TRAP OR STREET
EX OR EXIST	EXISTING	STA	STATION
F	FIR	STD	STANDARD
FES	FLARED END SECTION	STL	STEEL
FG	FINISHED GRADE	STPUD	SOUTH TAHOE PUBLIC UTILITY DISTRICT
FH	FIRE HYDRANT	SWPPP	STORM WATER POLLUTION PREVENTION PLAN
FL	FLOWLINE	T	TELEPHONE
FS	FINISH SURFACE	TBC	TOP BACK OF CURB
G	GAS	TBD	TOP BACK OF DIKE
GA	GAUGE	TD	TOP OF DIKE
GB	GRADE BREAK	TBR	TO BE REMOVED
GLS	GRASS-LINED SWALE	TG	TOP OF GRATE
GW	GROUND WATER	TTL	TOTAL
H	HORIZONTAL	TRANS	TRANSITION
HDPE	HIGH DENSITY POLYETHYLENE	TRM	TURF REINFORCEMENT MAT
HP	HIGH POINT	TRPA	TAHOE REGIONAL PLANNING AGENCY
HWL	HIGH WATER LINE	TYP	TYPICAL
ID	INSIDE DIAMETER	UG	UNDERGROUND
IE	INVERT ELEVATION	UKN	UNKNOWN
INCR	INCREASE	USFS	UNITED STATES FOREST SERVICE
INST	INSTALL	V	VERTICAL
INTRXN	INTERSECTION	W	WEST OR WATER
L	LENGTH	W/O	WITH
LC	LENGTH OF CHORD	WC	WILLOW CLUSTER
LF	LINEAR FEET	WV	WATER VALVE
LP	LOW POINT		
LT	LEFT		
LTD	LAKE TAHOE DATUM		

LEGEND

EXISTING		PROPOSED	
(SCREENED AND/OR DASHED)	EXISTING (AS NOTED)	— — — — —	CENTERLINE
— — — — —	RIGHT-OF-WAY OR PROPERTY LINE	— — — — —	SAWCUT (AS NOTED)
— — — — —	DRAINAGE OR SLOPE EASEMENT		AC PAVEMENT
— · · · — · · ·	UTILITY (PUE) EASEMENT		AC REMOVAL
—————	LAND CAPABILITY BOUNDARY	XXXX.XX	ELEVATION
—————	10' SEZ SETBACK		ELEVATION, EG CL, PROPOSED (PROFILE ONLY)
OR	ROCK		CSP INLET/RISER OR STORM DRAIN MANHOLE, DRAINAGE INLET
	FOUND MONUMENT		CUT OR FILL SLOPE
	SURVEY CONTROL POINT		DETAIL REF NUMBER SHEET NUMBER
XXXX.X	ELEVATION		ROCK
	SEWER MANHOLE	=====	SD PIPE (MATERIAL AS NOTED)
	SEWER CLEAN OUT	-RSF—ESA-	REINFORCED SILT FENCE AND TYPE ESA FENCE
	DRAINAGE INLET		FLARED END SECTION
	GAS METER	#:#	SLOPE RATIO, H: V
	WATER VALVE		ARTICULATED BLOCK CHANNEL
	WATER METER		BLANKET-LINED CHANNEL
	MONITORING WELL		TREE REMOVAL
— w — w — w —	WATER LINE		FLOWLINE
— s — s — s —	SEWER LINE	— c — c — c —	CUT
— g — g — g —	GAS LINE	— f — f — f —	FILL
	STORM DRAIN		
— oh — oh —	OVERHEAD UTILITIES		
	POWER/UTILITY POLE		
	UTILITY POLE & GUY ANCHOR		
	FIRE HYDRANT		
— x —	FENCE		
— · · · —	FLOWLINE		
	TREE, DIAMETER AND TYPE		
	STUMP		
	WILLOW CLUSTER		
	LANDSCAPE LIGHTING		

UTILITIES

CABLE TELEVISION	CHARTER COMMUNICATIONS, (775) 233-8706
NATURAL GAS	SOUTHWEST GAS, (530) 543-3225
ELECTRIC	LIBERTY UTILITIES, (530) 541-6400
SEWER & WATER	SOUTH TAHOE PUD, (530) 544-6474
TELEPHONE	AT&T, (530) 888-2031
STORM DRAIN	CO. OF EL DORADO DOT, (530) 573-3180

PRELIMINARY



COUNTY OF EL DORADO
DEPARTMENT OF TRANSPORTATION

SAN BERNARDINO CLASS 1 BIKE TRAIL PROJECT GENERAL NOTES, ABBREVIATIONS, AND LEGEND

SHEET
ii
2 OF ?
CONTRACT NO.
????
CIP No. 95117

REVISION				
	NUMBER	DATE	DESCRIPTION	BY

Drawing name: \\caddis\ut-atl-engineering\coll_3d_projects\0917\Engineering\PLAN\SE_PLAN.dwg
FOR REDUCED PLANS
2 ORIGINAL SCALE IS IN INCHES
1
0

REVISION

NUMBER	DATE	DESCRIPTION	BY

PREPARED UNDER THE SUPERVISION OF :

REGISTERED CIVIL ENGINEER
APRIL 23, 2019
DATE:

DESIGNED: KIS
CHECKED: DSP
ROAD NUMBER: ---

DRAWN: KIS
DATE: 04/19



COUNTY OF EL DORADO
DEPARTMENT OF TRANSPORTATION

SAN BERNARDINO CLASS 1 BIKE TRAIL PROJECT
LAYOUT STA 10+ 00 - 14+00

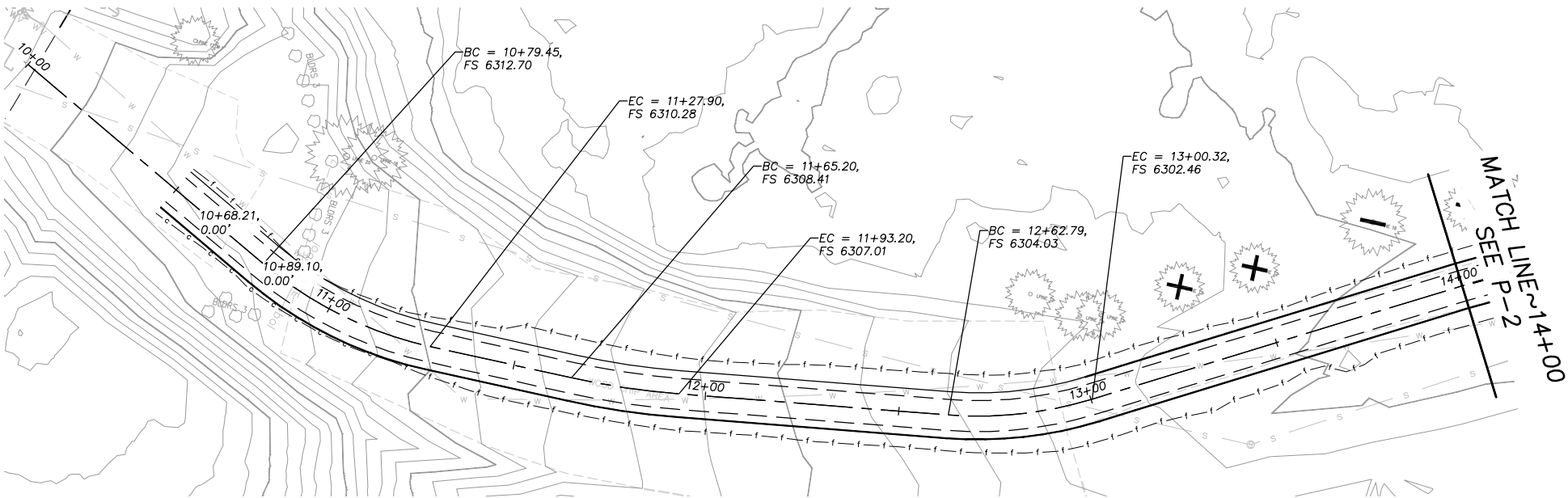
SHEET
L-1
X OF ?

CONTRACT NO.
????

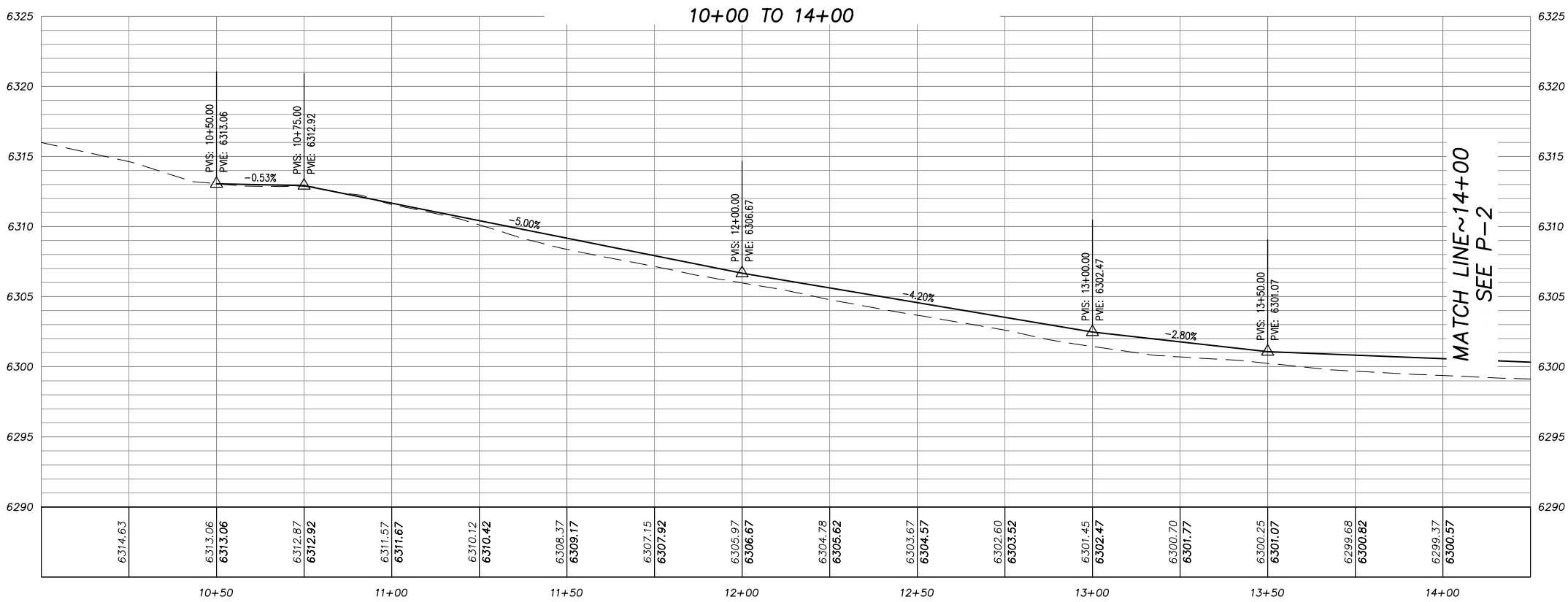
CIP No.
95117

NOTE:
THIS PROJECT IS LOCATED IN AN ENVIRONMENTALLY SENSITIVE AREA. YOU MUST EXERCISE UTMOST CARE TO PROTECT AND MAINTAIN EXISTING VEGETATION AND MINIMIZE SOIL COMPACTION WITHIN CONSTRUCTION AREAS.

!! WARNING !!
THE LOCATION AND/OR ELEVATION OF EXISTING UNDERGROUND UTILITIES SHOWN ON THESE PLANS ARE ONLY APPROXIMATE. CONTRACTOR TO VERIFY LOCATION AND ELEVATION OF ALL EXISTING UNDERGROUND UTILITIES.

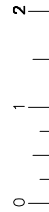


PLAN & PROFILE
SCALE: HORIZ 1"= 20'
VERT 1"= 5'



PRELIMINARY

Drawing name: \\caddat05\ut-all-engineering\civil_3d_projects\95117\engineering\PLAN\SS_PLAN.dwg
ORIGINAL SCALE IS IN INCHES
FOR REDUCED PLANS



REVISION

NUMBER	DATE	DESCRIPTION	BY

PREPARED UNDER THE SUPERVISION OF :

REGISTERED CIVIL ENGINEER
APRIL 23, 2019
DATE:

DESIGNED: KIS
DRAWN: KIS
CHECKED: DSP
DATE: 04/19
ROAD NUMBER: ---



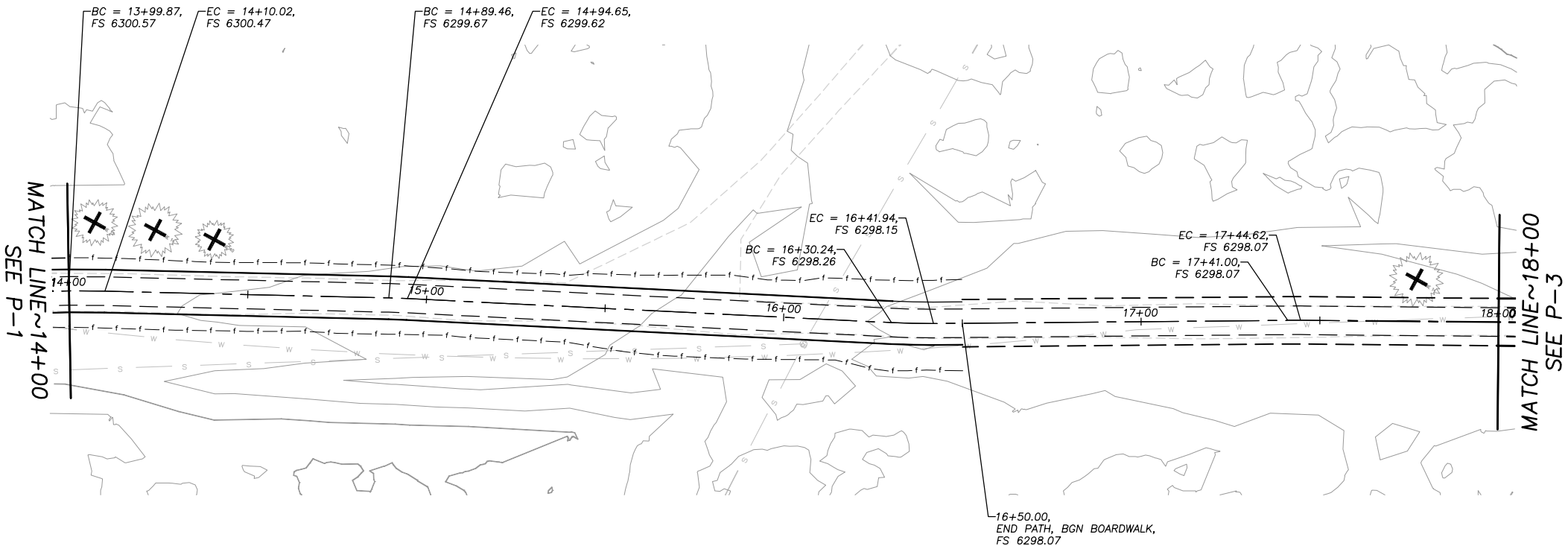
COUNTY OF EL DORADO
DEPARTMENT OF TRANSPORTATION

SAN BERNARDINO CLASS 1 BIKE TRAIL PROJECT
LAYOUT STA 14+00 - 18+00

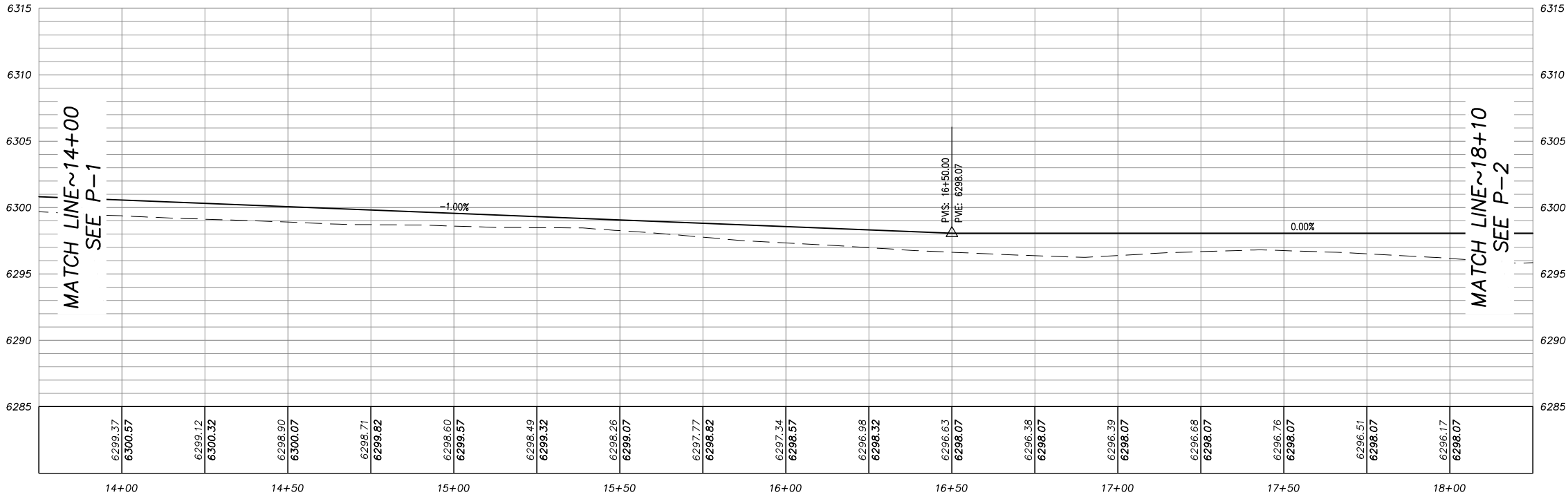
SHEET
L-2
X OF ?
CONTRACT NO.
????
CIP No.
95117

NOTE:
THIS PROJECT IS LOCATED IN AN ENVIRONMENTALLY SENSITIVE AREA. YOU MUST EXERCISE UTMOST CARE TO PROTECT AND MAINTAIN EXISTING VEGETATION AND MINIMIZE SOIL COMPACTION WITHIN CONSTRUCTION AREAS.

!! WARNING !!
THE LOCATION AND/OR ELEVATION OF EXISTING UNDERGROUND UTILITIES SHOWN ON THESE PLANS ARE ONLY APPROXIMATE. CONTRACTOR TO VERIFY LOCATION AND ELEVATION OF ALL EXISTING UNDERGROUND UTILITIES.



14+00 TO 18+00



PRELIMINARY

Drawing name: \\cadd\us\14-at-el-engineering\041 3d projects\0417\Engineering\PLAN\SS_MPLAN.dwg
2 ORIGINAL SCALE IS IN INCHES
FOR REDUCED PLANS

REVISION

NUMBER	DATE	DESCRIPTION	BY

PREPARED UNDER THE SUPERVISION OF :	DESIGNED: KIS	DRAWN: KIS
REGISTERED CIVIL ENGINEER	CHECKED: DSP	DATE: 04/19
APRIL 23, 2019	ROAD NUMBER: ---	
DATE:		

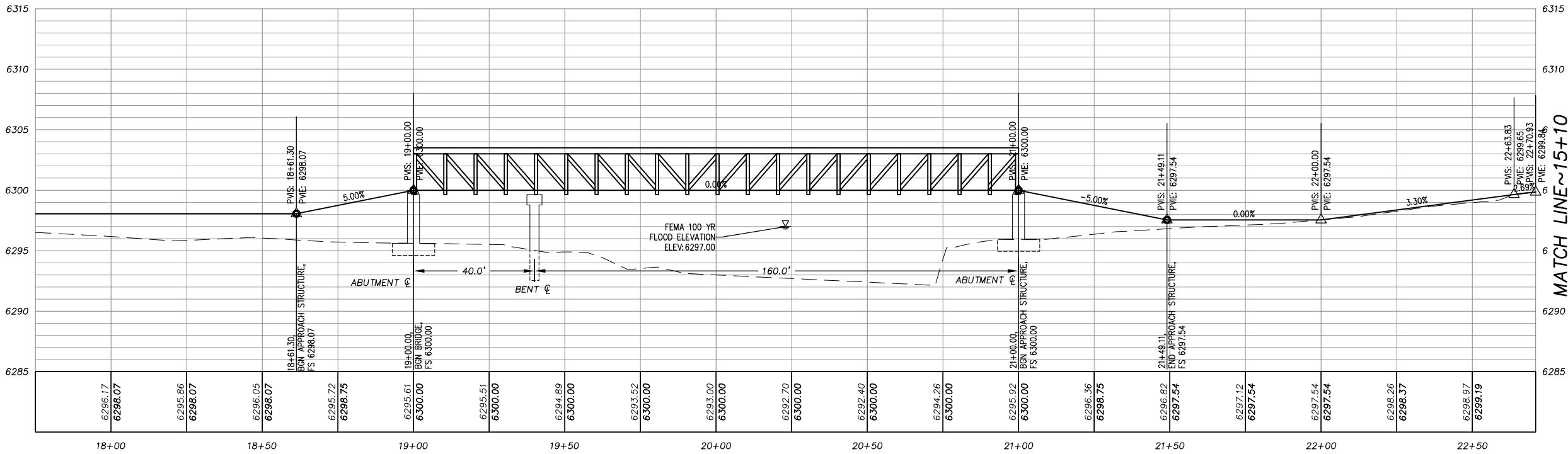


COUNTY OF EL DORADO
DEPARTMENT OF TRANSPORTATION

SAN BERNARDINO CLASS 1 BIKE TRAIL PROJECT
LAYOUT STA 18+00 - XX+XX

SHEET
L-3
X OF ?
CONTRACT NO.
????
CIP No.
95117

18+00 TO 22+70.93



MATCH LINE~15+10
SEE P-2

MATCH LINE~18+00
SEE P-1

NOTE:
THIS PROJECT IS LOCATED IN AN ENVIRONMENTALLY
SENSITIVE AREA. YOU MUST EXERCISE UTMOST CARE TO
PROTECT AND MAINTAIN EXISTING VEGETATION AND
MINIMIZE SOIL COMPACTION WITHIN CONSTRUCTION AREAS.

!! WARNING !!
THE LOCATION AND/OR ELEVATION OF EXISTING
UNDERGROUND UTILITIES SHOWN ON THESE
PLANS ARE ONLY APPROXIMATE. CONTRACTOR
TO VERIFY LOCATION AND ELEVATION OF ALL
EXISTING UNDERGROUND UTILITIES.

PLAN & PROFILE
SCALE: HORIZ 1"= 20'
VERT 1"= 5'

FOR REDUCED PLANS

0 | . | 1 | 2 | ORIGINAL SCALE IS IN INCHES

SHEET
C-1
X OF ?
CONTRACT NO.
????
CIP No.
95117

Drawing name: \\caddadus\it-all-engineering\proj_3d_projects\95117\engineering\PLAN\ESL_EC0.dwg
2 ORIGINAL SCALE IS IN INCHES
FOR REDUCED PLANS



LEGEND

- > SEDIMENT CONTROL
- ≡ TRAFFIC BARRICADE
- TREE TRUNK PROTECTION
- 7 LAND CAPABILITY DESIGNATION
- LAND CAPABILITY DESIGNATION
- LAND CAPABILITY 1B SETBACK
- RSF — RSF — RSF — REINFORCED SILT FENCE
- ESA — ESA — ESA — TEMPORARY FENCE (TYPE ESA)
- EDGE OF PAVEMENT
- · — · — RIGHT OF WAY/PROPERTY LINE
- ⬢ PROPOSED ROCK
- ~~~~~ PROPOSED CHANNEL
- ⬢ PROPOSED STAGING, STORAGE, OR TIRE WASH AREAS

NOTES:

1. FOR ACCESS TO CONSTRUCTION AREA ADJACENT TO BARBARA AVE, THE ACCESS AT SIERRA BLVD AND MARTIN AVE ARE FOR ENTRANCE ONLY. TO LEAVE THE WORK AREA, USE THE ACCESS WITH THE TIRE WASH NEAR THE STA 19+50 LT.
2. FOR STAGING AND STORAGE AREAS ON PAVEMENT, PLACE TEMPORARY FENCE (TYPE ESA) IN SHOULDER AND PLACE FIBER ROLLS ON EP TO CONTAIN SEDIMENT WITH IN THE PAVED AREAS.
3. YOUR ATTENTION IS DIRECTED TO THE SWPPP, TEMPORARY EROSION CONTROL SHEETS, REVEGETATION PLAN SHEET, AND THE SPECIAL PROVISIONS REGARDING TEMPORARY EROSION CONTROL REQUIREMENTS FOR STAGING AREAS.
4. STAGING AREAS SHOWN ARE FOR THE TEMPORARY STORAGE OF CONSTRUCTION MATERIALS AND EQUIPMENT WHICH ARE TO BE USED ON THIS PROJECT.

TEMPORARY EROSION CONTROL
SUMMARY OF QUANTITIES

	TEMPORARY CONSTRUCTION ENTRANCE	DRAIN INLET PROTECTION	TEMPORARY FIBER ROLL	REINFORCED SILT FENCE	TEMPORARY FENCE (TYPE ESA)	TEMPORARY FENCE (TYPE ESA) TREE TRUNK PROTECTION
	-	-	-	-	-	-

PRELIMINARY

REVISION	NUMBER	DATE	DESCRIPTION	BY

PREPARED UNDER THE SUPERVISION OF :

REGISTERED CIVIL ENGINEER

AUGUST 9, 2019

DATE:

DESIGNED: KIS

DRAWN: KIS

CHECKED: DSP

DATE: 08/08/19

ROAD NUMBER: ---



COUNTY OF EL DORADO
DEPARTMENT OF TRANSPORTATION

SAN BERNARDINO CLASS 1 BIKE TRAIL PROJECT
TEMPORARY EROSION CONTROL PLAN

SHEET

EC-1

X OF ?

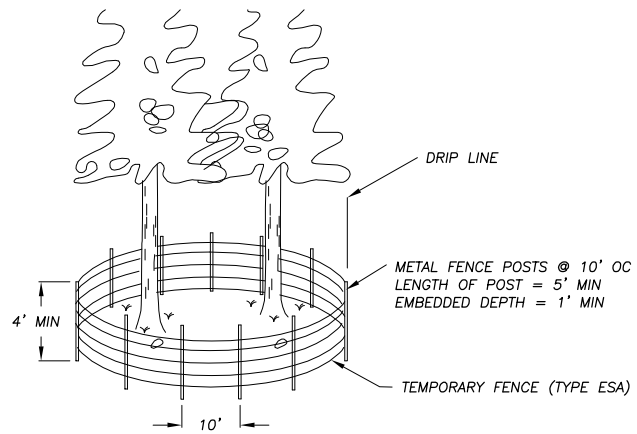
CONTRACT NO.

????

CIP No.

95117

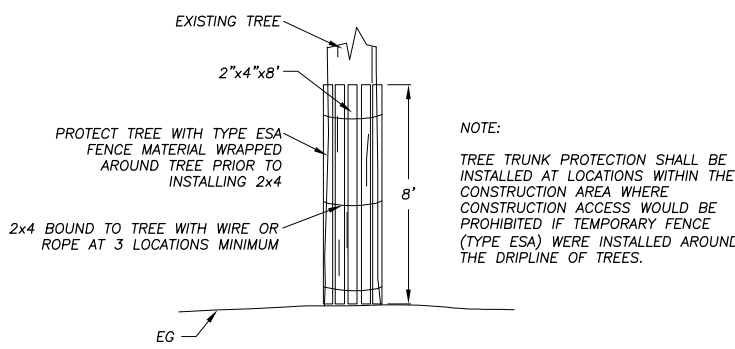
Drawing name: \\caddata\5\tr-sit-engineering\civil_3d_projects\95117\engineering\WPLAN\SB_EC2.dwg
2 ORIGINAL SCALE IS IN INCHES
FOR REDUCED PLANS



TEMPORARY FENCE (TYPE ESA) AT DRIPLINES

NTS

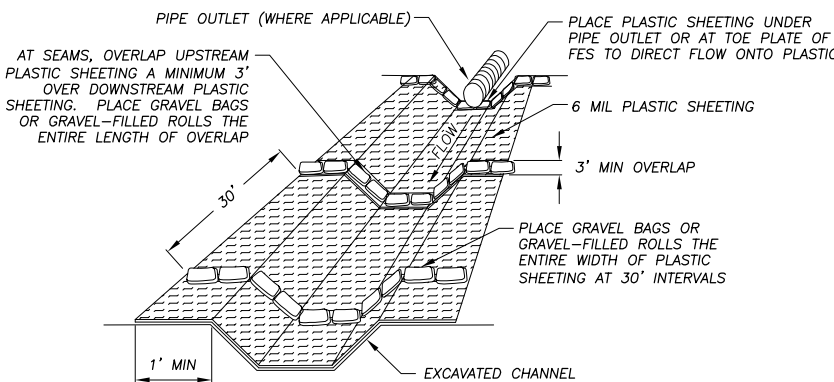
1
EC-2



WOODEN TREE TRUNK PROTECTION

NTS

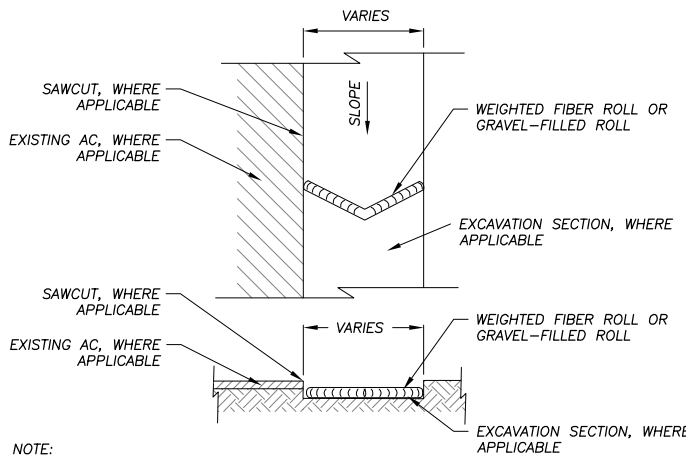
2
EC-2



PLASTIC SHEETING WITH GRAVEL BAGS OR GRAVEL-FILLED ROLLS

NTS

3
EC-2

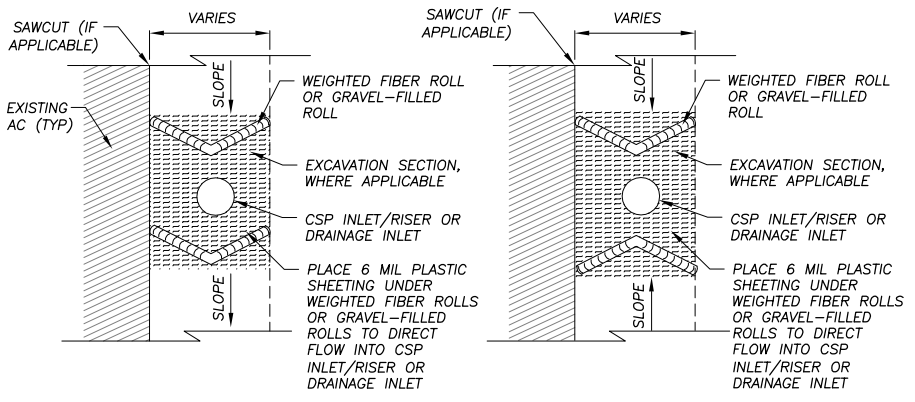


NOTE:
SPACING INTERVALS FOR WEIGHTED FIBER ROLL OR GRAVEL-FILLED ROLL TEMPORARY SEDIMENT CONTROL ON GRADE SHALL BE AT 50' OC FOR SLOPES GREATER THAN 5% AND AT 100' OC FOR SLOPES LESS THAN OR EQUAL TO 5%.

WEIGHTED FIBER ROLLS OR GRAVEL-FILLED ROLLS

NTS

4
EC-2



NOTE:
SEE ALSO TYPE 2 OR TYPE 3A, CALTRANS STD PLANS T61 AND T62.

DRAIN INLET PROTECTION

NTS

5
EC-2

NOT USED

NTS

6
EC-2

PRELIMINARY

- GENERAL NOTES:
1. LOCATIONS AND LF OF TEMPORARY REINFORCED SILT FENCE REQUIRED FOR THE STAGING AREAS ARE NOT SHOWN. YOU ARE TO INCLUDE THESE AREAS IN YOUR TEMPORARY EROSION CONTROL PLAN SUBMITTAL.
 2. LENGTHS OF TEMPORARY REINFORCED SILT FENCE AND TEMPORARY FENCE (TYPE ESA) DOES NOT INCLUDE MINIMUM LIMITS FOR TREE PROTECTION. TREE PROTECTION FENCING IS TO BE AS SHOWN AND/OR AS DETERMINED IN THE FIELD.

REVISION	NUMBER	DATE	DESCRIPTION	BY

PREPARED UNDER THE SUPERVISION OF :

REGISTERED CIVIL ENGINEER
AUGUST 9, 2019
DATE:

DESIGNED: KIS
CHECKED: DSP
ROAD NUMBER: ---

DRAWN: KIS
DATE: 08/08/19

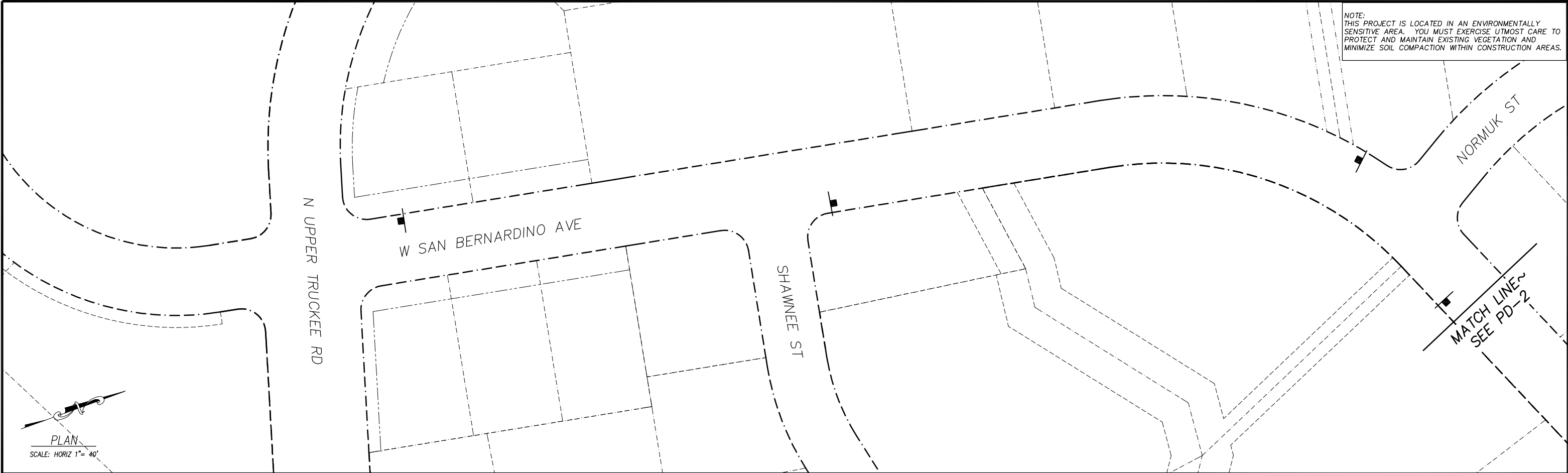
EL DORADO COUNTY
CALIFORNIA

COUNTY OF EL DORADO
DEPARTMENT OF TRANSPORTATION

SAN BERNARDINO CLASS 1 BIKE TRAIL PROJECT
TEMPORARY EROSION CONTROL DETAILS

SHEET
EC-2
X OF ?
CONTRACT NO. ????
CIP No. 95117

FOR REDUCED PLANS
2
1
0
ORIGINAL SCALE IS IN INCHES
Drawing name: \\csd\elad5\ut-atl-engineering\coll_3d_projects\95117\engineering\PLAN\SS_PD.dwg



SIGNING LEGEND

- XX — SIGN NUMBER, SEE TABLE DETAILS
- — EXIST SIGN
- — INSTALL SIGN
- — INSTALL DOUBLE SIDED SIGN
- * — REMOVE AND REPLACE

CONSTRUCTION NOTES:

- A — 4" SOLID YELLOW STRIPE PAINTED PER DIMENSIONS SHOWN
- B — 1' WIDE X 5' WHITE PAINTED LIMIT LINE PER CALTRANS RSP A24E
- C — "STOP" PAVEMENT MARKING (H=48", W=38") PER CALTRANS RSP A24D (1/2 SIZE) PLACE 5' C FROM LIMIT LINE
- D — DASHED CENTERLINE STRIPING PER CAMUTCD FIG 9C-2

- NOTES:
- 1) FINISH ON BACK OF SIGN: MIDNIGHT GREEN ENDURA SHIELD IV, TNEPEC SEMIGLOSS HIGH BUILD ACRYLIC POLYURETHANE ENAMEL NO. 75-J7751
- 2) ALL TRAFFIC CONTROL DEVICES SHALL BE IN ACCORDANCE WITH THE LATEST APPROVED CALIFORNIA MANUAL ON UNIFORM TRAFFIC CONTROL DEVICES (CA MUTCD).
- 3) ASTM DESIGNATION APPLIES TO ALL COLORS ON SIGN OR RAIL. BLACK SHALL BE NON-REFLECTIVE.

ROADWAY AND BIKE PATH SIGNS					
SIGN DESIGNATION	SIGN MESSAGE AND DESCRIPTION	SIGN SIZE	QTY	SIGN COLORS	RETROREFLECTIVE ASTM TYPE
D11-1	"BIKE ROUTE" SIGN	24"x18"	-	WHITE ON GREEN	III
M4-11	"BEGIN" SIGN	12"x4"	-	WHITE ON GREEN	III
M4-12	"END" SIGN	12"x4"	-	WHITE ON GREEN	III
R1-1	"STOP" SIGN	18"x18"	-	WHITE ON RED	III
R1-5	"YIELD TO PEDESTRIAN" SIGN	36"x36"	-	RED/BLACK ON WHITE	III
R44A (CA)	"NO MOTOR VEHICLES" SIGN	12"x24"	-	BLACK ON WHITE	III
W7-5	"HILL" (BICYCLE) SIGN	18"x18"	-	BLACK ON YELLOW	III
W3-1	"STOP AHEAD" SYMBOL	18"x18"	-	RED/BLACK ON YELLOW	III
W11-15	BICYCLE/PEDESTRIAN WARNING	36"x36"	-	BLACK ON YELLOW	III
W16-7P	DIAGONAL DOWNWARD RIGHT ARROW	24"x12"	-	BLACK ON YELLOW	III
W16-7P	DIAGONAL DOWNWARD LEFT ARROW	24"x12"	-	BLACK ON YELLOW	III
W16-9P	"AHEAD" SIGN	24"x12"	-	BLACK ON YELLOW	III

PAVEMENT STRIPING		
TYPE	SHEET	SPRAYABLE PAINT
		YELLOW FT
SOLID YELLOW STRIPING	PD-1	-
	PD-2	-
	PD-3	-
BROKEN YELLOW CENTERLINE STRIPING	PD-1	-
	PD-2	-
	PD-3	-
TOTAL		-

PAVEMENT MARKINGS			
SYMBOL	DESCRIPTION	QUANTITY (EA)	AREA (SF)
CROSSWALK		-	-
LIMIT LINE		-	-
YIELD LINE		-	-
STOP		-	-
TOTAL		-	-

PRELIMINARY

APPROVED FOR PAVEMENT DELINEATION AND SIGN WORK ONLY

REVISION			
NUMBER	DATE	DESCRIPTION	BY

PREPARED UNDER THE SUPERVISION OF :

REGISTERED CIVIL ENGINEER

AUGUST 9, 2019

DATE:


DESIGNED: KIS

DRAWN: KIS

CHECKED: DSP

DATE: 08/08/19

ROAD NUMBER: ---



COUNTY OF EL DORADO
DEPARTMENT OF TRANSPORTATION

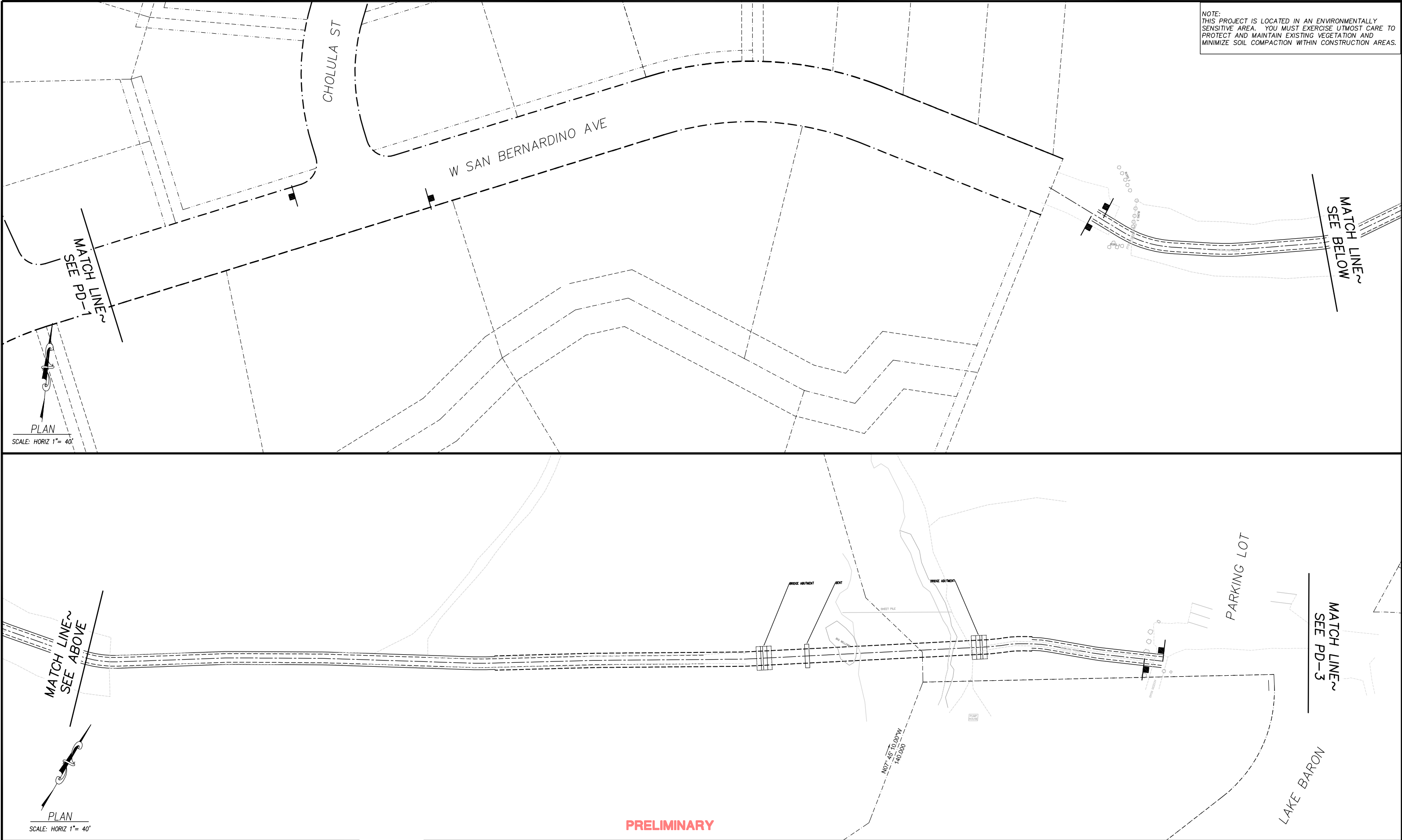
SAN BERNARDINO CLASS 1 BIKE TRAIL PROJECT
SIGNING AND PAVEMENT DELINEATION

SHEET PD-1
X OF ?

CONTRACT NO. ????

CIP No. 95117

FOR REDUCED PLANS 2 ORIGINAL SCALE IS IN INCHES 1 0



REVISION	FOR REDUCED PLANS			BY
	NUMBER	DATE	DESCRIPTION	

PREPARED UNDER THE SUPERVISION OF :


REGISTERED CIVIL ENGINEER

AUGUST 9, 2019

DATE:

DESIGNED: KIS	DRAWN: KIS
CHECKED: DSP	DATE: 08/08/19
ROAD NUMBER: ---	

PRELIMINARY

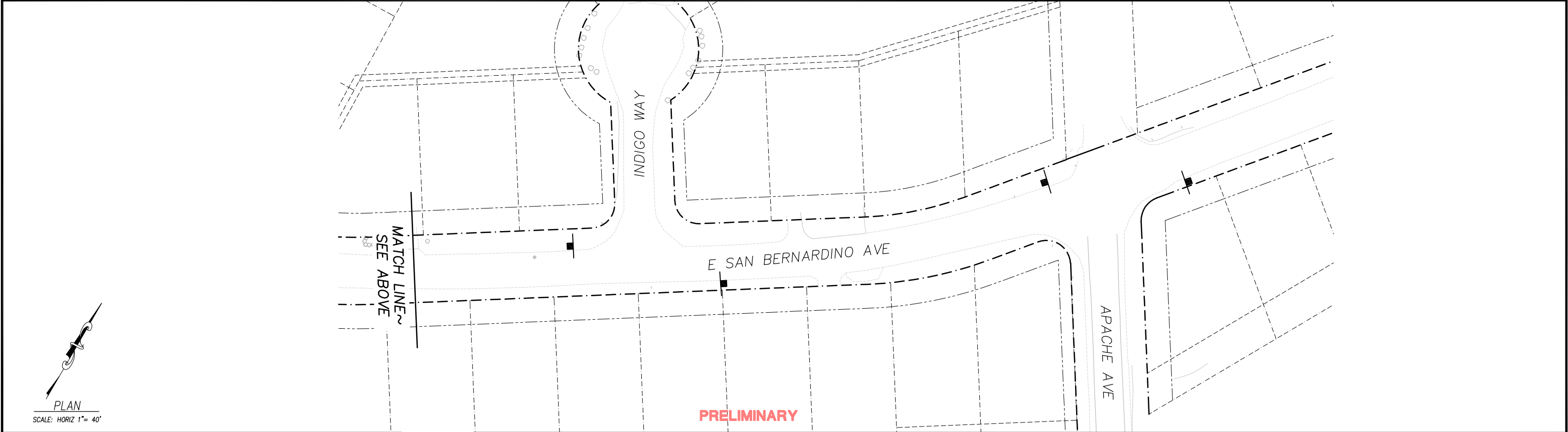


COUNTY OF EL DORADO
DEPARTMENT OF TRANSPORTATION

SAN BERNARDINO CLASS 1 BIKE TRAIL PROJECT
SIGNING AND PAVEMENT DELINEATION


SHEET PD-2
X OF ?
CONTRACT NO. ????
CIP No. 95117

FOR REDUCED PLANS
0 1 2
ORIGINAL SCALE IS IN INCHES
Drawing name: \\caddad5\ut-atl-engineering\coll_3d_projects\95117\engineering\PLAN\SS_PD.dwg



REVISION			
NUMBER	DATE	DESCRIPTION	BY

PREPARED UNDER THE SUPERVISION OF :	DESIGNED: KIS	DRAWN: KIS
REGISTERED CIVIL ENGINEER	CHECKED: DSP	DATE: 08/08/19
AUGUST 9, 2019	ROAD NUMBER: ---	
DATE:		



COUNTY OF EL DORADO
DEPARTMENT OF TRANSPORTATION

SAN BERNARDINO CLASS 1 BIKE TRAIL PROJECT SIGNING AND PAVEMENT DELINEATION	SHEET PD-3 X OF ? CONTRACT NO. ???? CIP No. 95117
---	---