

May 7, 2019

Randy Nichols, Project Manager
MICHAEL BAKER INTERNATIONAL
3760 Kilroy Airport Way, Suite 270
Long Beach, CA 90806

RE: CULTURAL RESOURCES IDENTIFICATION MEMO FOR THE 2020 WALNUT INDUSTRIAL PARK PROJECT, CITY OF SIGNAL HILL, LOS ANGELES COUNTY, CALIFORNIA

Dear Mr. Nichols:

In support of the 2020 Walnut Industrial Park Project (project), Michael Baker International staff completed a South Central Coastal Information Center (SCCIC) records search, historical map review, and Natural History Museum of Los Angeles County (NHMLAC) paleontological resources records search to determine whether the project could result in adverse impacts to paleontological resources and historical resources (archaeological or built environment) in accordance with the California Environmental Quality Act (CEQA). Methods, results, and recommendations are summarized below; figures are provided in **Attachment 1**.

PROJECT DESCRIPTION

The project includes constructing nine two-story concrete tilt-up buildings, totaling approximately 151,075 square feet, for occupancy by businesses engaged in a variety of nonpolluting light industrial activities such as manufacturing, warehousing, and product assembly. The proposed development plan includes a variety of site improvements, such as surface-level parking for 260 vehicles, 77,527 square feet of landscaping, and miscellaneous underground water, sewer, storm drainage, electricity, and communications lines. The project also includes a soil vapor extraction system to capture and remove hazardous soil vapor gas resulting from contamination by a former oil refinery that operated on the site between the late 1920s and the mid-1990s.

CULTURAL RESOURCES IDENTIFICATION METHODS

The results of the SCCIC records search and historical map search are presented below.

SOUTH CENTRAL COASTAL INFORMATION CENTER

SCCIC staff conducted a records search (File No. 20039.6048) on March 26, 2019. The SCCIC, as part of the California Historical Resources Information System, California State University, Fullerton, an affiliate of the California Office of Historic Preservation (OHP), is the official state repository of cultural resources records and reports for Los Angeles County. As part of the records search, the following federal and California inventories were reviewed:

MICHAEL BAKER INTERNATIONAL**RE: CULTURAL RESOURCES IDENTIFICATION MEMO FOR THE 2020 WALNUT INDUSTRIAL PARK PROJECT, CITY OF SIGNAL HILL, LOS ANGELES COUNTY, CALIFORNIA****Page 2**

- California Inventory of Historic Resources (OHP 1976).
- California Points of Historical Interest (OHP 1992 and updates).
- California Historical Landmarks (OHP 1996).
- Directory of Properties in the Historic Property Data File (OHP 2012). The directory includes the listings of the National Register of Historic Places (National Register), National Historic Landmarks, California Register of Historical Resources (California Register), California Historical Landmarks, and California Points of Historical Interest.

Results

No cultural resources were identified within the project site; one historical resource and 13 cultural resources are located within a quarter-mile search radius, as identified below.

Resource Name/#	Description	OHP Status Code
Bungalow Court 1700 Hill Street, Signal Hill	Bungalow Court determined eligible for listing in the National and California Registers on June 22, 1989, under Criterion A/1 and C/3 (association with a historic event/theme and architectural style).	2
1303 East 20 th Street, Long Beach	Residence determined not eligible for listing in the National Register.	6Y
1175 East 21 st Street, Long Beach	Residence determined not eligible for listing in the National Register.	6Y
1211 Leigh Court, Long Beach	Residence determined not eligible for listing in the National Register.	6Y
2001 Orange Avenue, Long Beach	Residence determined not eligible for listing in the National Register.	6Y
2034 Orange Avenue, Long Beach	Residence determined not eligible for listing in the National Register.	6Y
2090 Orange Avenue, Long Beach	Residence determined not eligible for listing in the National Register.	6Y
2116 Orange Avenue, Long Beach	Residence determined not eligible for listing in the National Register.	6Y
1204 Smith Place, Long Beach	Residence determined not eligible for listing in the National Register.	6Y
1206 Smith Place, Long Beach	Residence determined not eligible for listing in the National Register.	6Y
1209 Smith Place, Long Beach	Residence determined not eligible for listing in the National Register.	6Y

MICHAEL BAKER INTERNATIONAL**RE: CULTURAL RESOURCES IDENTIFICATION MEMO FOR THE 2020 WALNUT INDUSTRIAL PARK PROJECT, CITY OF SIGNAL HILL, LOS ANGELES COUNTY, CALIFORNIA****Page 3**

1339 Wesley Drive, Long Beach	Residence determined not eligible for listing in the National Register.	6Y
1341 Wesley Drive, Long Beach	Residence determined not eligible for listing in the National Register.	6U
1350 Wesley Drive, Long Beach	Residence determined not eligible for listing in the National Register.	6Y

No cultural resources studies have been completed in the project area; five have been completed within the quarter-mile search radius, as identified below.

Author	Date	Title	Within project site?	Resources identified in project area?
Beth Padon	1985	<i>Signal Hill City Hall: Archaeological Record Search</i>	No	No
Andrew Schmidt and Noelle Storey	2003	<i>Draft: Historical Resources Assessment of 1777 and 1778 East 20th Street, City of Signal Hill for the Long Beach Unified School District</i>	No	No
EarthTouch Inc.	2007	<i>E. Pacific Coast Hwy & Cherry Ave., Project Number La-0594a</i>	No	No
Wayne H. Bonner	2007	<i>Cultural Resources Records Search and Site Visit Results for T-Mobile Candidate LA03562D (Excel Paving), 2230 Lemon Avenue, Long Beach, Los Angeles County, California</i>	No	No
Wayne H. Bonner	2008	<i>Cultural Resources Records Search and Site Visit Results for T-Mobile Candidate LA33375A (Long Beach Storage), 1883 Cherry Ave, Long Beach, Los Angeles County, California.</i>	No	No

LITERATURE AND HISTORICAL MAP REVIEW

Michael Baker staff reviewed literature and historic maps for archaeological, ethnographic, historical, and environmental information about the project area and the vicinity. Below is a list of resources reviewed, followed by a narrative description of the results for the project area.

- Official Map of Los Angeles County, California (Schmidt Label & Litho. Co. 1888)
- Downey, Calif. 1:24,000 scale topographic quadrangle (USGS 1902)
- Long Beach, Calif. 1:24,000 scale topographic quadrangle (USGS 1924)

MICHAEL BAKER INTERNATIONAL

RE: CULTURAL RESOURCES IDENTIFICATION MEMO FOR THE 2020 WALNUT INDUSTRIAL PARK PROJECT, CITY OF SIGNAL HILL, LOS ANGELES COUNTY, CALIFORNIA

Page 4

- Map of "(Los Angeles Streets). Palos Verdes. San Pedro. Wilmington. Long Beach. Signal Hill." (Thomas Bros. 1938)
- Long Beach, Calif. 1:24,000 scale topographic quadrangle (USGS 1949)
- Long Beach, Calif. 1:24,000 scale topographic quadrangle (USGS 1964)
- Historic aerials dated 1953, 1963, 1972, 1994, 2002 (Historicaerials.com 2019)

Results

No features are depicted in the project site until at least 1924 when approximately four buildings, of unknown type, are located within the project area. At this time the project site was bound by the Union Pacific Railroad and Pacific Electric Railroad (neither extant). By 1949, the project area included various buildings and tanks related to the oil refinery industry. The number of tanks and buildings increased into the 1990s until the majority of the project site was covered. The project site was cleared of all buildings and structures between 1994 and 2002. (Schmidt Label & Litho. Co. 1888; Thomas Bros 1938; USGS 1902, 1924, 1949, 1964; Historicaerials.com 2019)

PEDESTRIAN SURVEY

Michael Baker cultural resources staff did not conduct an archaeological field survey because the area had been cleared and graded between 1994 and 2002. No built environment resources are located in the project area.

NHMLAC RECORDS SEARCH

A vertebrate paleontology collection records search for locality and specimen data was completed by the NHMLAC on March 26, 2019 (McLeod 2019: **Attachment 2**). The records search identified no previously identified vertebrate fossil localities within the project site; however, the project site was identified to have high sensitivity for paleontological resources because the entire project site consists of older Quaternary deposits, referred to as the Palos Verdes Sand or the Lakewood Formation. Directly east of the project site are exposures of slightly older marine Pleistocene San Pedro Sand that likely underlies the Palos Verdes Sand in the project area. The older Quaternary deposits and older marine Pleistocene San Pedro Sand are both known to produce fossil specimens, including the following four localities within the project's vicinity:

Locality	Fossil Types	Formation Type	Depth of Discovery	Approximate Distance from Project Area
LACM 1022	Undetermined birds (Aves)	Older Quaternary	Unknown	1 mile
LACM 1021	Undetermined birds (Aves) and mammoth (<i>Mammuthus</i>)	Older Quaternary	Unknown	1.10 miles

MICHAEL BAKER INTERNATIONAL**RE: CULTURAL RESOURCES IDENTIFICATION MEMO FOR THE 2020 WALNUT INDUSTRIAL PARK PROJECT, CITY OF SIGNAL HILL, LOS ANGELES COUNTY, CALIFORNIA**

Page 5

LACM 3245	Fish sanddabs (<i>Citharichthys stigmaeus</i> and <i>Citharichthys sordidus</i>); halibut (<i>Paralichthys californicus</i>); sole (<i>Parophrys vetulus</i> and <i>Lyopsetta exilis</i>); lanternfish (<i>Electrona rissoi</i>); goby (<i>Lepidogobius lepidus</i>)	San Pedro Sand	37 feet	1.25 miles
LACM 7493	Camel (<i>Camelidae</i>)	Older Quaternary	8.5 feet	1.5 miles

FINDINGS AND RECOMMENDATIONS

The SCCIC records search and historic map review identified no historical resources as defined by CEQA Section 15064.5(a) within the project area. One historical resource, 1700 Hill Street, is located near the project area; however, the project would not directly or indirectly impact the historical significance of the resource because the project will not physically demolish, destruct, relocate, or alter the resource or its immediate surroundings in such a way that the significance of the resource would be materially impaired, as defined in CEQA Section 15064.5(b)(1-2). The project would have no impacts to historical resources.

There are no known archaeological resource concerns in the project site, however, there is some potential to uncover previously unidentified archaeological resources during excavation into native soil materials. Standard mitigation measures are recommended in the event that potentially significant archaeological resources and/or human remains are discovered, as follows:

MM CUL-1 Treatment of previously unidentified archaeological deposits. If suspected prehistoric or historical archaeological deposits are discovered during construction, all work within 25 feet of the discovery shall be redirected and a Secretary of the Interior Professional Qualified archaeologist and/or Registered Professional Archaeologist shall assess the situation, and make recommendations regarding the treatment of the discovery. Impacts to significant archaeological deposits should be avoided if feasible, but if such impacts cannot be avoided, the deposits should be evaluated for their eligibility for the California Register. If the deposit is not California Register eligible, no further protection of the find is necessary. If the deposits are California Register eligible, impacts shall be avoided or mitigated. Acceptable mitigation may consist of but is not necessarily limited to systematic recovery and analysis of archaeological deposits, recording the resource, preparation of a report of findings, and accessioning recovered archaeological materials at an appropriate curation facility.

MM CUL-2 Treatment of previously unidentified human remains. Any human remains encountered during project ground-disturbing activities shall be treated in

accordance with California Health and Safety Code Section 7050.5. There shall be no further excavation or disturbance of the site or any nearby area reasonably suspected to overlie adjacent remains until the Los Angeles County coroner has determined the manner and cause of any death, and the recommendations concerning the treatment and disposition of the human remains have been made to the person responsible for the excavation or to his or her authorized representative. Project personnel/construction workers shall not collect or move any human remains and associated materials. If the human remains are of Native American origin, the coroner must notify the Native American Heritage Commission (NAHC) within 24 hours of this identification. The NAHC will immediately identify a Native American most likely descendant to inspect the site and provide recommendations within 48 hours for the proper treatment of the remains and associated grave goods.

MM PALEO-1 Treatment of Fossil Discoveries. Due to substantial fossil finds in the project's vicinity and within the same geologic formation which underlies the entire project site, the NHMLAC recommends monitoring by a qualified professional paleontologist, during excavation into native Quaternary materials, as well as collection and processing of soil samples in those areas to determine the fossil potential of the site. Any fossils recovered during mitigation shall be deposited to an accredited and permanent scientific institution. A qualified professional paleontologist is a professional with a graduate degree in paleontology, geology, or related field, with demonstrated experience in the vertebrate, invertebrate, or botanical paleontology of California, as well as at least one year full time professional experience, or equivalent specialized training in paleontological research (i.e., the identification of fossil deposits, application of paleontological field and laboratory procedures and techniques, and curation of fossil specimens), and at least four months of supervised field and analytic experience in general North American paleontology.

PREPARER QUALIFICATIONS

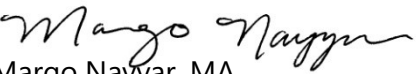
This report was prepared by Michael Baker International Cultural Resource Manager Margo Nayyar. Ms. Nayyar is an architectural historian with nine years of cultural resources management experience in California. Her experience includes built environment surveys, historic context development, archival research, Native American consultation, evaluation of historic-era resources using guidelines outlined in the National, California, and various local registers, preparation of cultural resources technical studies pursuant to CEQA and Section 106 of the National Historic Preservation Act, municipal preservation planning, and providing Certified Local Government training to interested local governments. She also specializes in producing HABS/HAER/HALS (Historic American Buildings Survey, the Historic American Engineering Record, and Historic American Landscapes Survey) heritage documentation. Ms. Nayyar meets the Secretary of the Interior's Professional Qualification Standards for history and architectural history.

MICHAEL BAKER INTERNATIONAL

**RE: CULTURAL RESOURCES IDENTIFICATION MEMO FOR THE 2020 WALNUT INDUSTRIAL PARK
PROJECT, CITY OF SIGNAL HILL, LOS ANGELES COUNTY, CALIFORNIA**

Page 7

Sincerely,


Margo Nayyar, MA
Cultural Resources Manager

Attachments:

Attachment 1 – Figures

Attachment 2 – Vertebrate Paleontology Records Check

MICHAEL BAKER INTERNATIONAL

RE: CULTURAL RESOURCES IDENTIFICATION MEMO FOR THE 2020 WALNUT INDUSTRIAL PARK PROJECT, CITY OF SIGNAL HILL, LOS ANGELES COUNTY, CALIFORNIA

Page 8

REFERENCES

- Bonner, Wayne H. 2007. "Cultural Resources Records Search and Site Visit Results for T-Mobile Candidate LA03562D (Excel Paving), 2230 Lemon Avenue, Long Beach, Los Angeles County, California." Michael Brandman Associates. On file at the South Central Coastal Information Center.
- _____. 2008. "Cultural Resources Records Search and Site Visit Results for T-Mobile Candidate LA33375A (Long Beach Storage), 1883 Cherry Ave, Long Beach, Los Angeles County, California." Michael Brandman Associates. On file at the South Central Coastal Information Center.
- EarthTouch Inc. 2007. "E. Pacific Coast Hwy & Cherry Ave., Project Number La-0594a." On file at the South Central Coastal Information Center.
- Historicaerials.com. 2019. Historic aerials of the project area dated 1953, 1963, 1972, 1994, and 2002. Electronic resource, <https://www.historicaerials.com/viewer>, accessed multiple.
- McLeod, Samuel. 2019. "Vertebrate Paleontology Records Check for paleontological resources for the proposed 2020 Walnut Industrial Park Project, Project #171776, in the City of Signal Hill, Los Angeles County, project area." Los Angeles County Natural History Museum.
- OHP (California Office of Historic Preservation). 1976. California Inventory of Historic Resources. Sacramento: California Department of Parks and Recreation.
- _____. 1992. California Points of Historical Interest. Sacramento: California Department of Parks and Recreation.
- _____. 1996. California Historical Landmarks. Sacramento: California Department of Parks and Recreation.
- _____. 2012. Directory of Properties in the Historic Property Data File for Los Angeles County, last updated April 5, 2012. Sacramento: California Department of Parks and Recreation.
- Padon Beth. 1985. "Signal Hill City Hall: Archaeological Record Search." On file at the South Central Coastal Information Center.
- Schmidt, Andrew and Noelle Storey. 2003. "Draft: Historical Resources Assessment of 1777 and 1778 East 20th Street, City of Signal Hill for the Long Beach Unified School District." Jones and Stokes. On file at the South Central Coastal Information Center.
- Schmidt Label & Litho. Co. 1888. *Official Map of Los Angeles County, California*. Electronic resource, <https://www.loc.gov/resource/g4363l.la000023/>, accessed multiple.

MICHAEL BAKER INTERNATIONAL

**RE: CULTURAL RESOURCES IDENTIFICATION MEMO FOR THE 2020 WALNUT INDUSTRIAL PARK
PROJECT, CITY OF SIGNAL HILL, LOS ANGELES COUNTY, CALIFORNIA**

Page 9

Thomas Bros. 1938. Map of "(Los Angeles Streets). Palos Verdes. San Pedro. Wilmington. Long Beach. Signal Hill." Electronic resource,
https://www.davidrumsey.com/luna/servlet/detail/RUMSEY~8~1~248655~5515988:-Los-Angeles-Streets---Palos-Verdes?sort=pub_list_no_initialsort%2Cpub_date%2Cpub_list_no%2Cseries_no&qvq=w4s:/where%2FLos%2BAngel%2B%252528Calif.%252529;sort:pub_list_no_initialsort%2Cpub_date%2Cpub_list_no%2Cseries_no;lc:RUMSEY~8~1&mi=9&trs=127, accessed multiple.

USGS (US Geological Survey). 1902. Downey, Calif. 1:24,000 scale topographic quadrangle.

———. 1924. Long Beach, Calif. 1:24,000 scale topographic quadrangle.

———. 1949. Long Beach, Calif. 1:24,000 scale topographic quadrangle.

———. 1964. Long Beach, Calif. 1:24,000 scale topographic quadrangle.

Attachment 1

Figures

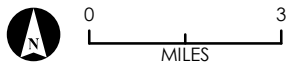
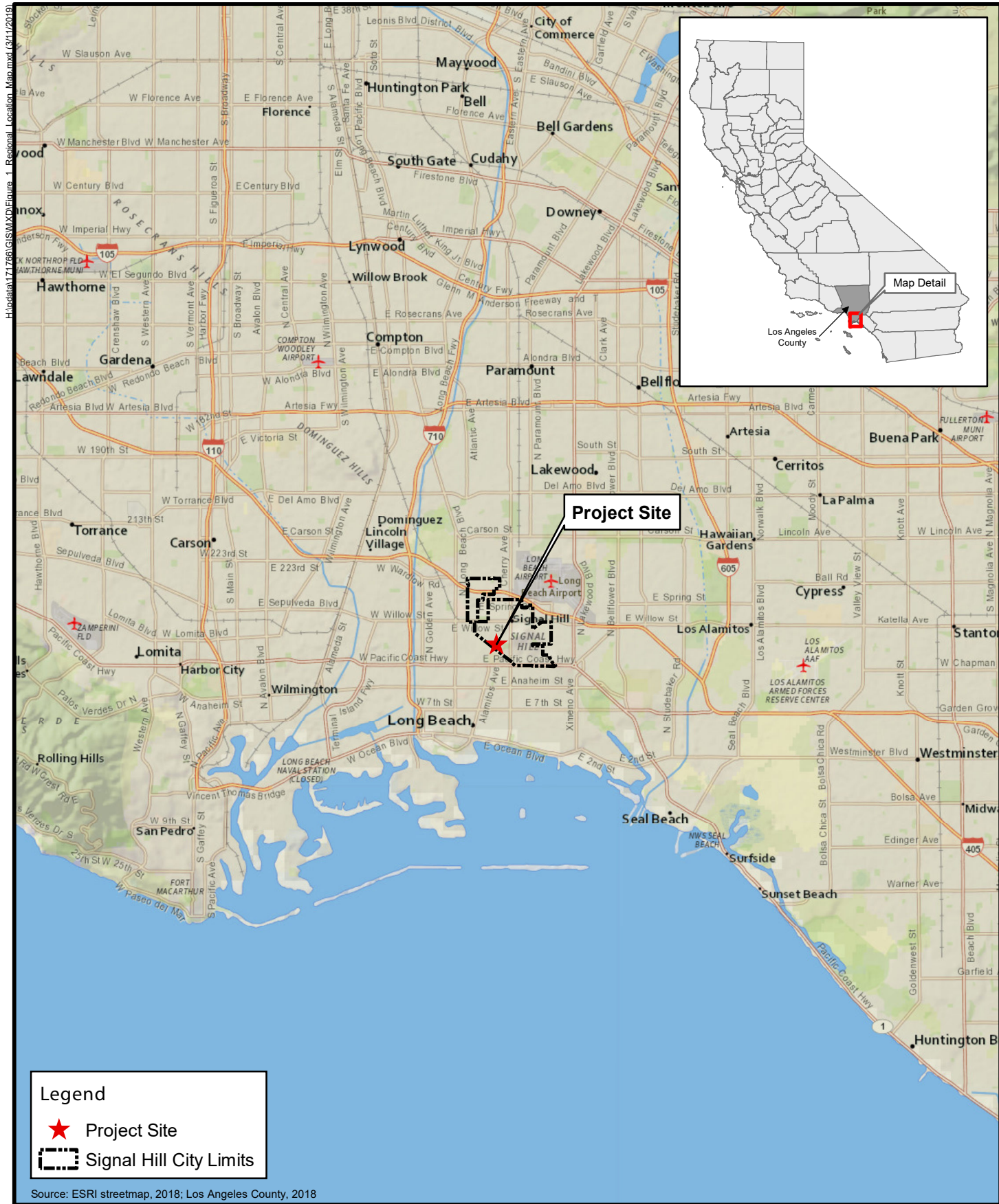
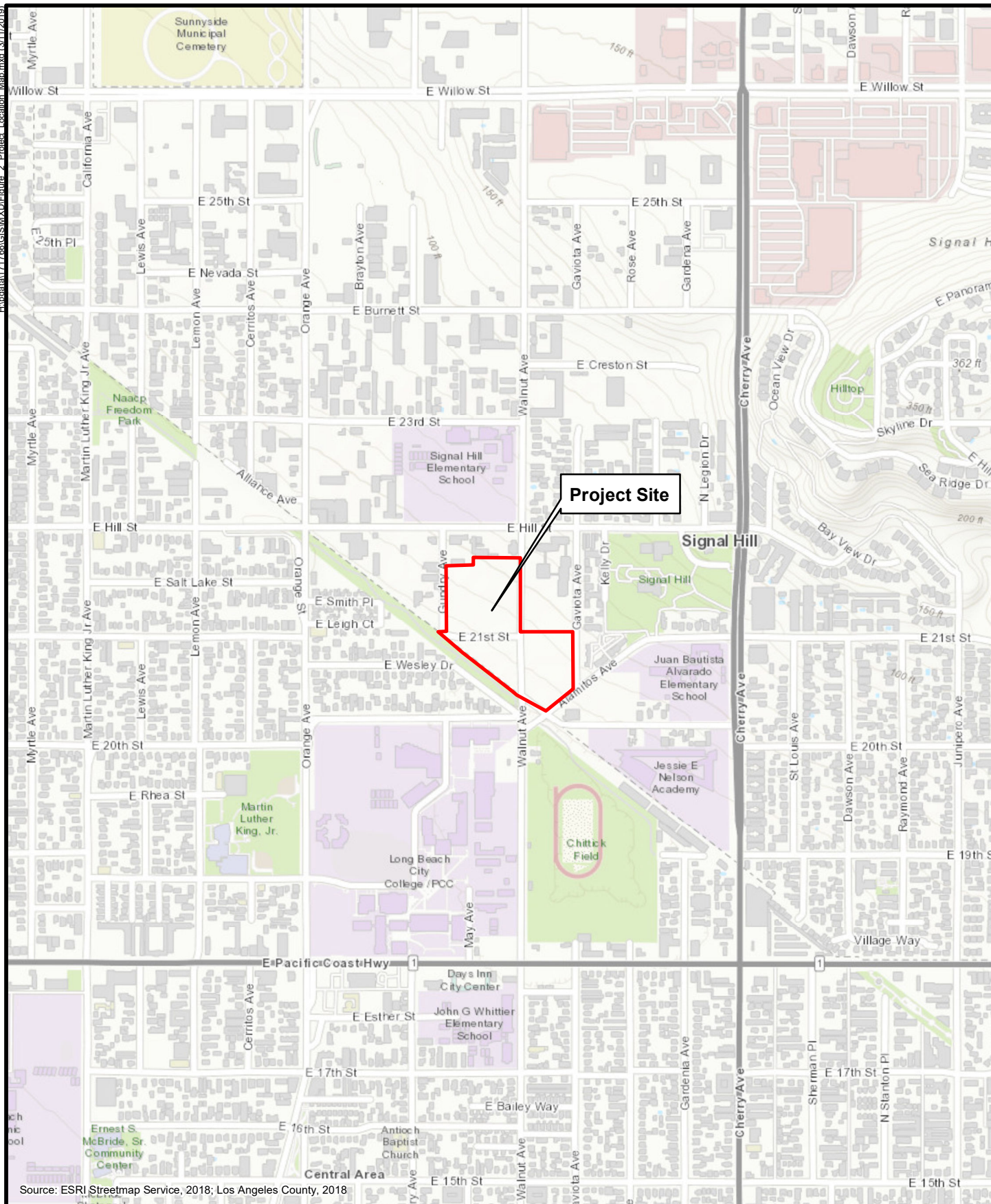


FIGURE 1
Regional Location Map
Michael Baker
INTERNATIONAL



0 400 800
Feet

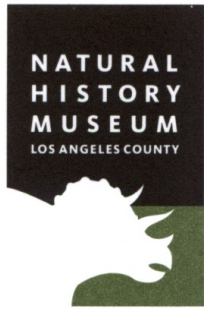
FIGURE 2
Project Vicinity Map

Attachment 2

Vertebrate Paleontology Records

Check

Natural History Museum
of Los Angeles County
900 Exposition Boulevard
Los Angeles, CA 90007
tel 213.763.DINO
www.nhm.org



Vertebrate Paleontology Section
Telephone: (213) 763-3325

e-mail: smcleod@nhm.org

26 March 2019

Michael Baker International
2729 Prospect Park Drive, Suite 220
Rancho Cordova, CA 95670

Attn: Margo Nayyar, Architectural Historian

re: Vertebrate Paleontology Records Check for paleontological resources for the proposed
2020 Walnut Industrial Park Project, Project # 171776, in the City of Signal Hill,
Los Angeles County, project area

Dear Margo:

I have conducted a thorough search of our paleontology collection records for the locality and specimen data for the proposed 2020 Walnut Industrial Park Project, Project # 171776, in the City of Signal Hill, Los Angeles County, project area as outlined on the portion of the Long Beach USGS topographic quadrangle map that you sent to me via e-mail on 11 March 2019. We have no vertebrate fossil localities that lie directly within the proposed project area, but we do have localities nearby from the same sedimentary deposits that occur in the proposed project area.

In the entire proposed project area there are exposures of older Quaternary deposits typically referred to as the Palos Verdes Sand or the Lakewood Formation in this vicinity. Just to the east of the proposed project area there are exposures of the slightly older marine Pleistocene San Pedro Sand that probably underlies the Palos Verdes Sand in the proposed project area.

North-northwest of the proposed project area, on Spring Street near the intersection with Orange Avenue, our older Quaternary locality LACM 1022 produced fossil specimens of undetermined birds, Aves. Further east along Spring Street, near the intersection with Cherry Avenue north-northeast of the proposed project area, our older Quaternary locality LACM 1021

produced fossil specimens of bird, Aves, and mammoth, *Mammuthus*, at unknown depth. Just north of locality LACM 1021, on the south side of the San Diego Freeway (I-405) where it crosses Cherry Avenue, our San Pedro Sand locality LACM 3245 produced a rich suite of fossil invertebrates and fish at a depth of 37 feet below the surface. The fossil fish fauna from locality LACM 3245, mostly represented by skull otoliths (ear bones) obtained from screen washing sediment samples, was described by J.E. Fitch and R.D. Reimer in 1967 (Bulletin of the Southern California Academy of Sciences, 66(2):77-91). Fitch and Reimer cited George Kanakoff (personal communication) as stating that the invertebrates indicated a Pliocene age for the invertebrates in the fauna, but subsequent research shows that the deposit is probably the marine Quaternary San Pedro Sand. Fitch and Reimer figured fossil specimens in the LACM collections from locality LACM 3245 for the fish sanddabs, *Citharichthys stigmaeus* and *Citharichthys sordidus*, halibut, *Paralichthys californicus*, sole, *Parophrys vetulus* and *Lyopsetta exilis*, lanternfish, *Electrona rissoi*, and goby, *Lepidogobius lepidus*.

East-southeast of the proposed project area, near the intersection of the Pacific Coast Highway (Highway 1) and Grand Avenue, our older Quaternary locality LACM 7493 produced a fossil specimen of camel, Camelidae, at a depth of 8.5 feet below the surface.

Any excavations in the older Quaternary deposits exposed throughout the proposed project area may well uncover significant fossil vertebrate remains. Any substantial excavations in the proposed project area, therefore, should be monitored closely to quickly and professionally recover any fossil remains discovered while not impeding development. Sediment samples from the proposed project area should also be collected and processed to determine the small fossil potential of the site. Any fossils recovered during mitigation should be deposited in an accredited and permanent scientific institution for the benefit of current and future generations.

This records search covers only the vertebrate paleontology records of the Natural History Museum of Los Angeles County. It is not intended to be a thorough paleontological survey of the proposed project area covering other institutional records, a literature survey, or any potential on-site survey.

Sincerely,

A handwritten signature in cursive script that reads "Samuel A. McLeod".

Samuel A. McLeod, Ph.D.
Vertebrate Paleontology

enclosure: invoice