

APPENDIX C



CULTURAL RESOURCES TECHNICAL MEMORANDUM

Date: January 10, 2020
To: Petralogix Engineering, Inc.
From: Solano Archaeological Services
Subject: Cultural Resources Study – American River College, Technology Building
Modernization Project, Sacramento County, California

INTRODUCTION

This technical memorandum summarizes the background research, Native American outreach, pedestrian survey, and findings for the American River College, Technology Building Modernization Project (Project). The Project is subject to California Environmental Quality Act (CEQA) requirements, and Solano Archaeological Services (SAS) has prepared this technical memorandum to support those needs.

PROJECT LOCATION

The American River College has the address of 4700 College Oak Drive, Sacramento, California 95841, approximately 1.2 miles east of Highway 80. The project area is situated on the *Citrus Heights, California* topographic 7.5-minute quadrangle, in the *Del Paso* land grant, projected Township 9 North, Range 6 East, Sections 46 and 53.

PROJECT DESCRIPTION

American River College is one of four colleges in the Los Rios Community College District (LRCCD). Funded by the State of California Capital Outlay program, the LRCCD proposes to modernize the Technology Building at the American River College, which is now used primarily by the Automotive, Welding Technology, and Electronic programs. The undertaking includes moving the Physics and Engineering programs that are also currently in the building and replacing them with other interdisciplinary programs. The proposed modernization will improve and reconfigure the technology of these spaces for improved circulation and access compliance. The modernization also provides improvements to power, lighting, data, and HVAC systems, as well as the replacement of three old temporary portable buildings with a new permanent space.

REGULATORY SETTING

CEQA requires that public agencies having authority to finance or approve public or private projects assess the effects of the projects on cultural resources. Cultural resources include buildings, sites, structures, objects, or districts, each of which may have historical, architectural, archaeological, cultural, or scientific significance. CEQA states that if a proposed project would result in an effect that may cause a substantial adverse change in the significance of a significant cultural resource (termed a “historical resource”), alternative plans or mitigation measures must be considered. Because only significant cultural resources need to be addressed, the significance of cultural resources must be determined before mitigation measures are developed.

CEQA §5024.1 (Public Resources Code §5024.1) and §15064.5 of the State CEQA Guidelines (14 California Code of Regulations [CCR] §15064.5) define a historical resource as “a resource listed or eligible for listing on the California Register of Historical Resources.” A historical resource may be eligible for inclusion in the California Register of Historical Resources (CRHR) if it:

- 1) Is associated with events that have made a significant contribution to the broad patterns of California’s history and cultural heritage;
- 2) Is associated with the lives of persons important to our past;
- 3) Embodies the distinctive characteristics of a type, period, region, or method of construction; represents the work of an important creative individual; or possesses high artistic values; or
- 4) Has yielded, or may be likely to yield, information important to prehistory or history.

In addition, CEQA also distinguishes between two classes of archaeological resources: archaeological sites that meet the definition of a historical resource, and “unique archaeological resources.” An archaeological resource is considered “unique” if it:

- Is associated with an event or person of recognized significance in California or American history or of recognized scientific importance in prehistory;
- Can provide information that is of demonstrable public interest and is useful in addressing scientifically consequential and reasonable research questions;
- Has a special or particular quality such as oldest, best example, largest, or last surviving example of its kind;
- Is at least 100 years old and possesses substantial stratigraphic integrity; or
- Involves important research questions that historical research has shown can be answered only with archaeological methods (Public Resources Code §21083.2).

According to the CEQA Guidelines, a project with an effect that may cause a substantial adverse change in the significance of a historical resource or a unique archaeological resource is a project that may have a significant effect on the environment (14 CCR §15064.5[b]). CEQA further states that a substantial adverse change in the significance of a resource means the physical demolition, destruction, relocation, or alteration of the resource or its immediate surroundings such that the significance of a historical resource would be materially impaired.

The CEQA Guidelines (14 CCR §15064.5[e]) also require that excavation activities be stopped whenever human remains are uncovered, and that the county coroner be called in to assess the remains. If the county coroner determines that the remains are those of a Native American, the Native American Heritage Commission must be contacted within 24 hours, and the provisions for treating or disposing of the remains and any associated grave goods as described in CCR §15064.5 must be followed.

NATURAL AND CULTURAL SETTING

Existing Environment

The Project area and vicinity are located in the Central Valley (also known as the Great Valley or Great Central Valley), an elongated depression between the Coast Ranges and the Sierra Nevada. The Project area is essentially level and is at an elevation of approximately 90 ft. above mean sea level. The majority of the Project area urban landscape, but is directly adjacent to riparian woodland and Arcade Creek. The Central Valley was formed during the Quaternary Period, the most recent of the three periods of the Cenozoic era. The Cenozoic geological occurrences are the most important to the Central Valley in terms

of the fresh water aquifer formations that make the valley an ideal location for farming and ranching (California Department of Water Resources 2019).

Specifically, the Project area is situated in the Sacramento Valley, a region of the greater Central Valley, and contains sediments deposited from the Sierra Nevada Mountain range. The climatic pattern in the Project area and surrounding region is characterized as Mediterranean, with cool, wet winters and hot, dry summers. Soil studies suggest that the general climate may have been wetter in the past (Tanksley 2003). However, periods of persistent drought in California occurred between A.D. 912–1112 and A.D. 1210–1350. Shorter drought periods have also been documented over the last 2,000 years based on dendrochronology, soil core borings, and other methods.

Pre-Contact Setting

Due to the plentiful resources and temperate climate described above, the Central Valley was well populated in pre-contact times and served as the location for some of the more substantial village sites known in California. As a result, the area was an early focus for archaeological investigations. Beardsley (1948) and Lillard, Heizer and Fenenga (1939) and others conducted numerous studies that formed the core of our early understanding of upper Central Valley archaeology. Little has been found archaeologically that dates to the Paleo-Indian or the Lower Archaic time periods (10,000-3,000 B.C.) however, archaeologists have recovered a great deal of data from sites occupied beginning in the Middle Archaic period (3,000-1,000 BC). At this time, broad regional patterns of foraging subsistence strategies gave way to more intensive procurement practices, which have been subdivided into three archaeological time periods/cultural patterns. These assemblages are discussed in detail in Moratto (1984) and summarized here.

The Windmill Pattern (3,000-1,000 BC) of archaeological assemblages included an increased emphasis on acorn use as well as a continuation of hunting and fishing activities. Ground and polished chertstones, twined basketry, baked-clay artifacts and worked shell and bone were hallmarks of Windmill culture. Widely ranging trade patterns brought goods in from the Coast Ranges and trans-Sierran sources as well as closer trading partners. Distinctive burial practices identified with the Windmill Pattern also appeared in the Sierra foothills, indicating possible seasonal migration into the Sierra.

The Berkeley Pattern (1,000 BC to AD 500) represented a greater reliance on acorns as a food source than was seen previously. Distinctive stone and shell artifacts distinguished it from earlier or later cultural expressions. The Berkeley Pattern appears to have developed in the Bay Area and was spread through the migration of Plains Miwok Indians.

The Augustine Pattern (AD 500 to Historic Era) may have been stimulated by the southern migration of Wintuan people from north of the Sacramento Valley. Their culture was marked by increasing populations resulting from more intensive food procurement strategies, as well as a marked change in burial practices, increased trade activities and a well-defined ceramic technology.

Ethnographic Setting

The project area lies in the ethnographic territory of the *Nisenan*, also known as the Southern Maidu. The Nisenan, along with the Konkow and the Maidu, form a linguistic subgroup of the California Penutian linguistic family (Kroeber, 1925). Much like the other Native American groups in California, the Nisenan are further divided into smaller groups known as triblets, or smaller political entities that settle in different geographical areas and may have slight dialectical differences. The Nisenan are divided into the Northern Hill, Southern Hill, and Valley Nisenan subgroups, all of which comprise a territorial expanse in north-

central California between the Sacramento River and the crest of the Sierra Nevada Mountains. The northern territorial boundary is less known due to the linguistical similarities with the Maidu, but the Bear and Yuba Rivers were areas where the Nisenan language was known to be spoken. To the south the Cosumnes River formed a political boundary and was an important drainage where natural resources were exploited.

The Nisenan represent the southern linguistic group of the Maidu tribe (Heizer and Elsasser 1980). The name "Nisenan," also pronounced *Nishinon* and *Nisen'an*, broadly translates to "our people", "from among us", or "on our side" (Kroeber 1925, Heizer and Elsasser 1980, Littlejohn 1928). According to Kroeber (1976), supported populations in Nisenan territory numbered some 4,000-9,000 people. The abundance of natural resources and temperate climate was suitable for permanent settlements for most of the Nisenan triblets, but the Northern Hill Nisenan groups, being exposed to higher elevations and periodic unforgiving weather situations of the Sierra Nevada, settled seasonally. Although some cultural diffusion into other Native American groups was evident, intimidating physical boundaries such as the Sierras along with plentiful resources in Nisenan territory limited interaction with other groups and facilitated preservation of the Nisenan's distinctive culture.

The Nisenan east-west expanse consisted of notable elevation differences. From the Central Valley grassland floor barely above sea level to over 7,000 feet at the crest of the Sierras, the differing altitudes and associated landforms contained a variety of flora and fauna species that became crucial in Nisenan infrastructure. The Hill Nisenan groups exploited oak-woodland transitional zones and coniferous forests, while triblets along the Central Valley utilized riverine and prairie grassland resources. Large rivers feeding into the Bay Area Delta created high alluvial plains of fine loam strata throughout the Central Valley that facilitated fertile growth along the banks and eventually led to horticultural experimentation. Consistent with Nisenan's twelve-moon calendar which is divided into two parts, Merriam (1898) describes two seasons in the north Central Valley: Rainy with temperatures from 33°-75° F in the valley from November to March, and a dry season 60°-110° F from May to October.

Utilizing C. Hart Merriam's classification of life zones (1898), Nisenan territory incorporated three distinct vegetative zones, including the Valley Sonoran (10-500 ft elevation); the Upper Sonoran, further divided into the Lower Foothill belt (500-1000ft) and the Chaparral belt (100-4000 ft); and the Sierra Transition zone (4000-5000 ft). The Valley Sonoran grasslands and dense vegetation are interspersed by groves of Valley and Interior Live Oak tree species. According to Littlejohn (1928) and Kroeber (1925), prehistoric herbaceous growth was extensive to the point where native populations burned annually to reduce fuels. These burnings destroyed grasses and seedlings but caused little damage to the thick-barked, well established species of oak.

The Lower Foothill belt of the Upper Sonoran Zone was characterized by grasses, herbs, lily species, oak, and digger pines, while the Chaparral belt was distinguished by well drained slopes conducive to extensive brush and dense forest. Some of these species included sage brush, Manzanita, coffee and Christmas berries, poison oak, bush poppies, and flannel bush, as well as several varieties of oak, pine, cedar, fir, buckeye, madrone, dogwood, hazel, yew ash, and maple trees. The Nisenan utilized floral and faunal resources in elevations above 4000 feet solely for tools and subsistence (Littlejohn 1928). Neither ethnographic nor archaeological data support evidence of permanent settlement by the Nisenan above the Upper Sonoran zone (Littlejohn 1928; Kroeber 1976).

Small game such as badger, fox, skunks, jackrabbit, rabbit, squirrel, chipmunk, wood rat and mice were plentiful and hunted on a regular basis. Dogs, coyotes, wolves and most types of bears, however, were considered taboo and poisonous, and were thus avoided. A large portion of subsistence came from the large game hunt, which was usually conducted in groups of Nisenan men. Species of elk, antelope, and

deer were abundant in the foothills to the Sierra Nevada Mountains. The large game hunt involved a great deal of technological sophistication where the Nisenan would drive game over cliffs or into runways where they would be netted. Small game and birds, on the other hand, were chased into long nets or noosed, while fish were netted, poisoned with soaproot and turkey mullein, or gorge hooked (Heizer and Elsasser 1980).

Historic Setting

Within the vicinity of the Project area the dominant themes of historic-era development include early Euro-American settlement, agriculture, and transportation. The evolution of each of these pursuits is intricately intertwined and constitutes the basic foundations of historic settlement and economic and industrial activity in the region.

Early Settlement

Permanent Euro-American settlement in the Sacramento Valley began when the Spanish and subsequently colonial Mexican governments issued large land grants to various individuals, often in return for military or other services rendered to the government. One of the grantees was Swiss immigrant John Augustus Sutter who first settled on his 48,839-acre “Nueva (New) Helvetia” land grant. He established an agricultural and trading colony at New Helvetia (which in English means “New Switzerland” after Sutter’s home country) and built a substantial fort at the confluence of the Sacramento River and American River. The design of this outpost was influenced by Fort Vancouver, the principal trading station of the Columbia Department, operated by the Hudson’s Bay Company, which Sutter visited in 1838 before entering Alta California. From 1839 until January 1848, Sutter’s Fort served as a destination for immigrants coming into California and the present-day City of Sacramento initially grew up around the fort (Dillon 1967).

The early development of the City of Sacramento is directly attributable to the onslaught of gold seekers rushing to the Sierra Nevada foothills after the first notable discovery of gold in Coloma at Sutter’s sawmill in 1848. The little riverside settlement – now occupied by the “Old Sacramento” area, that served Sutter’s holdings in the region quickly took on the role of a gold rush port and staging area as ocean-going ships and riverboats used the Sacramento River to bring goods and passengers to the mines. Sutter’s son, John Jr., who joined his father in September 1848, laid out a grid of streets extending from the waterfront, and named the nascent town Sacramento. His plan established numbered streets running north to south, and lettered streets running east to west. Each block was divided into eight, 80-ft. x 150-ft. lots, four lots on either side of a central alley. By June 1849, there were 100 buildings in Sacramento, and by October the town had 2,000 permanent residents with up to another 5,000 passing through at any given time. The new town was centered on the embarcadero, or Front Street, and inland to the east along J Street. The Old Sacramento area represents a small fraction of the wharfs, warehouses, saloons, and retail shops that once crowded along the waterfront and J Street, the main avenue to the mines. Only in the years that followed did more specialized businesses replace the “general merchants” and shopkeepers of the early years (Brienes et al. 1981).

Prior to the development of the Los Rios District, the history of American River College began February 28, 1942 with the establishment of Grant Union Junior College. Located in Del Paso Heights, the school was used to train civilian personnel during World War II and changed its name to Grant Technical College in 1945. American River College became the 61st public junior college in California in 1955 and held classes at the former Grant Technical College campus until the school moved to its current location in 1958. The riparian oak woodland and Arcade Creek at the new campus location resulted in the oak as the official college symbol and the beaver as the college mascot (<https://arc.losrios.edu/about-us/our-history>).

NATIVE AMERICAN OUTREACH

The Public Resources Code Sections 21080.1, 21080.3.1, and 21080.3.2 (AB 52) requires public agencies to consult with the appropriate California Native American tribes identified by the Native American Heritage Commission (NAHC) for the purpose of mitigating impacts to cultural resources.

On December 26, 2019, SAS emailed a letter and a map depicting the project area and surrounding vicinity to the NAHC. On behalf of the LRCCD, the letter requested a Sacred Lands File (SLF) search of the project area, facilitation of AB 52 consultation, and a list of Native American consultants who should be contacted about the proposed Project (see Attachment B for Native American consultation documentation). On December 27, 2019, Ms. Nancy Gonzalez-Lopez, Staff Services Analyst for the NAHC, replied in an emailed letter that the SLF search was completed with negative results. Ms. Gonzalez-Lopez also supplied a list of local Native Americans to inform about the Project, request information on unrecorded cultural resources that may exist in the Project area, and gather official Project recommendations. On January 3, 2020, SAS mailed letters to the following Native Americans identified by the NAHC:

- Rhonda Morningstar Pope, Chairperson (Buena Vista Rancheria of Me-Wuk Indians)
- Sara Dutschke Setchwaelo, Chairperson (Ione Band of Miwok Indians)
- Pamela Cubbler, Treasurer (Colfax-Todds Valley Consolidated Tribe)
- Clyde Prout, Chairperson (Colfax-Todds Valley Consolidated Tribe)
- Cosme Valdez, Chairperson (Nashville Enterprise Miwok-Maidu-Nishinam Tribe)
- Regina Cuellar, Chairperson (Shingle Springs Band of Miwok Indians)
- Grayson Coney, Cultural Director (Tsi Akim Maidu)
- Don Ryberg, Chairperson (Tsi Akim Maidu)
- Gene Whitehouse, Chairperson (United Auburn Indian Community of the Auburn Rancheria [UAIC])
- Raymond Hitchcock, Chairperson (Wilton Rancheria)

On January 7, 2020, and January 10, 2020, SAS contacted the above tribal contacts via email to gather their input about the Project. To date, no responses have been received.

CALIFORNIA HISTORICAL RESOURCES INFORMATION SYSTEM (CHRIS) RECORDS SEARCH

On January 2, 2020, SAS conducted a records search (IC No. SAC-20-1) at the North Central Information Center (NCIC), of the California Historical Resources Information System at California State University, Sacramento. The NCIC archives were reviewed for previously known or recorded cultural resources, studies, and isolates within the project area and a half-mile radius. The NCIC records search included, but was not necessarily restricted to, a review of the following sources:

- The *National Register of Historic Places* (Historic Properties Directory, California Office of Historic Preservation 2002);
- The *California Register of Historic Places* (Historic Properties Directory, California Office of Historic Preservation 2002);
- The *California Historical Landmarks* (California Office of Historic Preservation 1996);
- The *California Points of Historical Interest* (California Office of Historic Preservation 1992); and
- The *California Inventory of Historic Resources* (California Department of Parks and Recreation 1976).

The records search results indicate that no previously documented cultural resources were identified directly in the Project area. However, one resource was documented within a half-mile radius of the

Project area (see Attachment C for records search documentation). This resource is summarized in Table 1 below.

Table 1. Previously Recorded Resources Within a Half-Mile Radius of the Project Area

Site No. (P-34-00-)	Recorder	Site Description	Date Originally Recorded
1351	D. Livingstone	Historic-era single family property	2004

In addition, the records search indicated that no cultural resources studies have been conducted within the project area. However, eleven cultural resources studies have been conducted within a half-mile radius of the Project area and are summarized in Table 2 below.

Table 2. Previously Conducted Studies within a Half-Mile Radius of the Project Area

Report #	Author	Title	Date
003026	Caikoski and Langley	Final Environmental Impact Report, Walnut Avenue at Winding Way Traffic Signal Project	1992
006260	Keefer	Negative Cultural Resources Survey Report: Cameron Ranch Levee Improvement and Stom Drain Project	2002
006282	Jones & Stokes	Cultural Resources Inventory and Monitoring Report for Sprint Cellular Builds in Sacramento, Placer and El Dorado Counties	2001
006324	Maniery	Archaeological Survey of Kisel Parcel Map and Exception	2005
006325	Pastron	Historical and Cultural Resource Assessment: Proposed Telecommunications Facility, Pasadena and Winding Way	2001
006454	US Department of Homeland Security and FEMA	Sacramento County Flood Hazard Mitigation, Sacramento County Department of Water Resources	2004
007541	Billat	Garfield & Cypress/ MPCS-SAC-245B	2006
009155	Alcides Freitas et al.	Ranchi Del Paso Estates Subdivision Map & Special Development Permit	1991
010736	Earth Touch, Inc.	American River College, CA-SAC0601B	2010
011031	H. Puckett	American River College	2012
011749	Little	Arcade Creek-Jo Smith Nature Trail Pedestrian Bridge	2013

Historic Map Review

SAS also reviewed a series of historic USGS topographic maps and historic aerial photographs to gather information on past land use and historic development in the Project area. According to the 1871 General Land Office (GLO) Plat map, the vicinity of the Project area was in flat open land as part of the Rancho Del Paso land grant. No historic development was noted in the vicinity of the Project area.

Arcade Creek is depicted on the 1902 *Citrus Heights, California* USGS 7.5' topographic map just east of the Project area. Roads, rural structures, and gridded agricultural lands are first observed on the 1947 aerial photograph (historicaerials.com), surrounding the Project area. The topographic quadrangles and aerial photographs show increasing urban development in the vicinity of the Project area overtime. The first depiction of some of the American River College buildings in the Project area appear on the 1964 historic aerial photograph, including a half-circle segment of the Technology building surrounded by leveled land (and thus making the buildings historic resources). By the late 1970's most of the current campus structures and parking lots had been installed. The existing campus buildings are being surveyed and evaluated by an architectural historian and are not addressed in the following findings section.

FIELD SURVEY

Methods

On January 3, 2020, SAS archaeologists Susan Talcott (Ph.D.) and Amy Wolpert (M.A.) conducted an intensive pedestrian survey of the Project area. Much of the Project area was paved and contained campus buildings, however, all landscaping features and recent ground disturbances were inspected for cultural resources. The property was documented with digital photographs and a sub-meter accurate Trimble GPS unit was utilized to verify project area boundaries and locations of previously recorded cultural resources.

Results

The Project area is bordered on the north by a paved parking lot, on the east by riparian oak woodland and the nearby Arcade Creek, to the south and west by additional campus buildings and parking. Much of the proposed Project area currently contains campus structures and paved areas. Most of the landscaped areas were covered with grass or other vegetation thus, overall ground surface visibility was less than 5%. SAS did not observe any pre-contact isolated artifacts or sites within the Project boundary. In addition, no historic-era artifacts were identified outside of the context of the existing campus features. As noted above, the historic-era campus structures are cultural resources and are being evaluated by an architectural historian in a separate study. See Attachment D photographs for current site conditions.

RECOMMENDATIONS

The NAHC sacred lands file search and the NCIC records search were negative for cultural resources in the project area. A review of the historic maps concluded that some of the American River College campus buildings were built in the historic-era and as such are cultural resources. Intensive archaeological survey noted that most of the project area consists of paved campus grounds interspersed with landscape features resulting in overall limited ground surface visibility. As noted earlier, the historic-era campus structures are being evaluated by an architectural historian under a separate study. No other cultural resources were documented as part of this inventory by SAS.

The Project area is situated near Arcade Creek and within riparian oak woodland. In addition, it is surrounded by small waterways and tributaries of the American River. The surrounding vicinity, especially near the banks of the American River and nearby waterways, were known for large Native

American habitation sites (Hoover et al. 1990). The project area is considered to have moderate pre-contact archaeological sensitivity due to the surrounding landscape. Since the entire project area lies within a dense urban landscape that has undergone years of subsurface intrusion, SAS recommends no further management for this Project.

In the event that presently undocumented buried archaeological deposits are encountered during any Project-associated construction activity, work must cease within a 50-foot radius of the discovery. A qualified archaeologist must be retained to document the discovery, assess its significance, and recommend treatment. If human remains or any associated funerary artifacts are discovered during construction, all work must cease within the immediate vicinity of the discovery. In accordance with the California Health and Safety Code (Section 7050.5), the San Joaquin County Sheriff/Coroner must be contacted immediately. If the Coroner determines the remains to be Native American, the Coroner will notify the Native American Heritage Commission, which will in turn appoint a Most Likely Descendent (MLD) to act as a tribal representative. The MLD will work with the Applicant and a qualified archaeologist to determine the proper treatment of the human remains and any associated funerary objects. Construction activities will not resume until either the human remains are exhumed, or the remains are avoided via Project construction design change.

REFERENCES

- Baumhoff, Martin A.
1963 Ecological Determinants of Aboriginal California Populations. *University of California Publications in American Archaeology and Ethnology* 49(2):155-236.
- Beardsley, R.K.
1948 Cultural Sequences in Central California Archaeology. *American Antiquity* 14(1):1-28.
- Beck, Warren A., and Ynez D. Haase
1974 *Historical Atlas of California*. University of Oklahoma Press.
- Department of Parks and Recreation
1976 *California Inventory of Historic Resources*. Sacramento.
- Dillon, R.
1967 *Fool's Fold, the Decline and Fall of Captain John Sutter of California*. Coward-McCann, New York.
- Gudde, Erwin
1960 California Place Names: The Origin and Etymology of Current Geographical Names. Revised edition. University of California Press, Berkeley.
- Heizer, R. F., editor
1978 Handbook of North American Indians, vol. 8. Smithsonian Institution, Washington.
- Heizer, R. F. and A. B. Elsasser
1980 The Natural World of the California Indians. University of California Press, Berkeley.
- Hoover, M.B., H.E. Rensch, E.G. Rensch, and W.N. Abeloe
2002 *Historic Spots in California*. Fifth edition, revised by Douglas E. Kyle. Stanford University Press, Stanford, California.
- Kuchler, A.W.
1977 Map of the Natural Vegetation of California. In M.G. Barbour and J. Major, eds., *Terrestrial Vegetation of California*. New York: Wiley.
- Kroeber, A. L.
1925 Handbook of the Indians of California. Bureau of American Ethnology: Bulletin 78. Washington, U.S.
1970 *Sierra Nevada Natural History*. Berkeley: University of California Press.
1976 Handbook of the Indians of California, reprint of 1925 Bulletin 78, Smithsonian Institution. Dover Publications, New York.
- Lillard, J.B., R. F. Heizer and F. Fenenga
1939 *An Introduction to the Archaeology of Central California*. Sacramento: Sacramento Junior College, Department of Anthropology Bulletin 2.
- Littlejohn, Hugh W.
1928 Nisenan Geography. In The Nisenan. N. Wilson and A. Towne.
- Merriam, C. H.
1898 Life Zones and Crop Zones of the United States. U.S. Dept of Agric. Bio. Survey Bulletin 10.
- Moratto, Michael J.
1984 *California Archaeology*. Academic Press, San Francisco.
- Shumway, Burgess McK.
2007 California Ranchos. Second Edition, the Borgo Press, Berkeley, California.

ATTACHMENT A

Figures

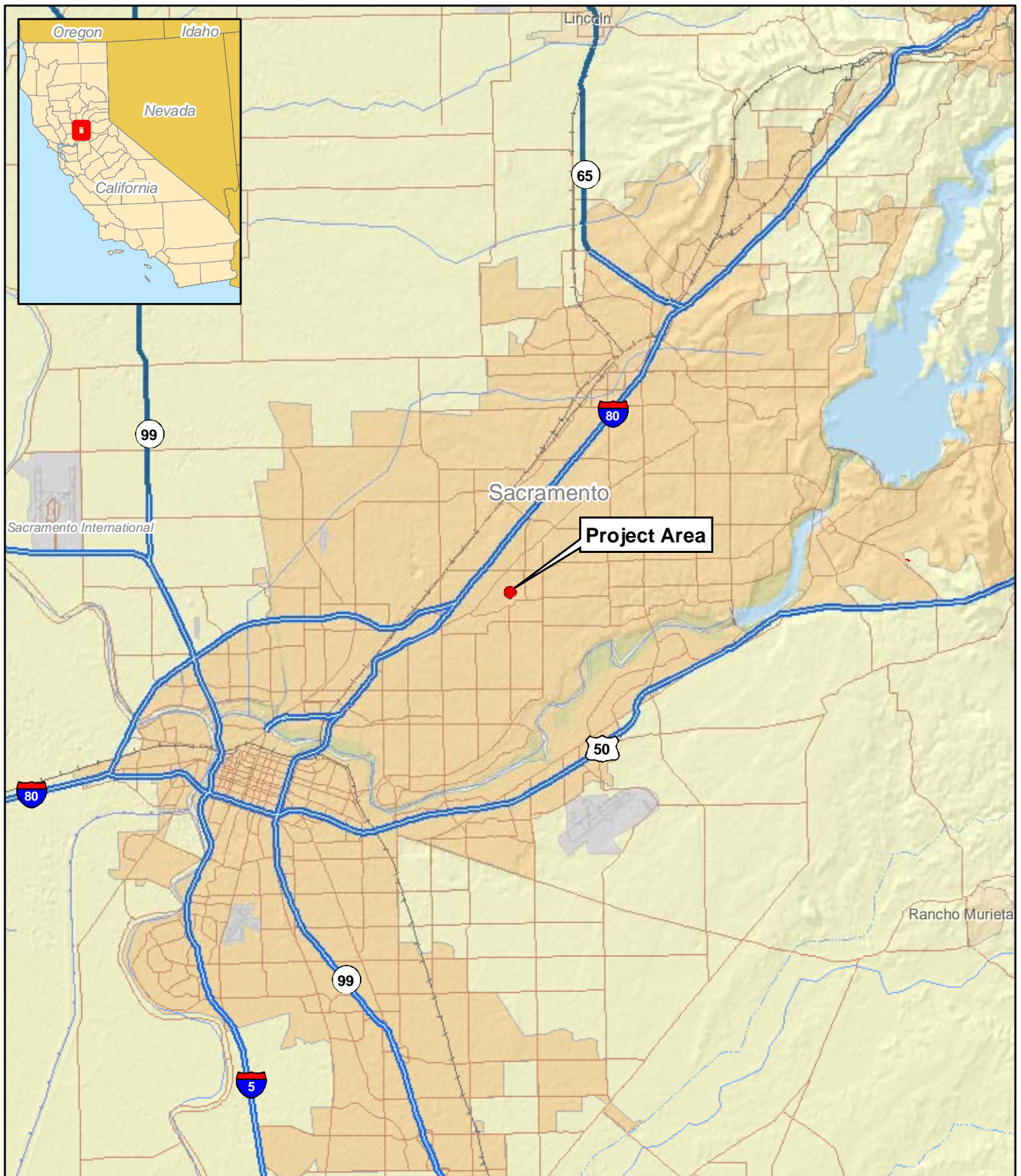


Figure1. Project Vicinity Map.

● ARC Technical Education Building Project Area

Sources: *USA Base Map* [layer], *Data and Maps* [CD]. ESRI, 2006.



1:250,000

0 3 Miles

0 6 Kilometers



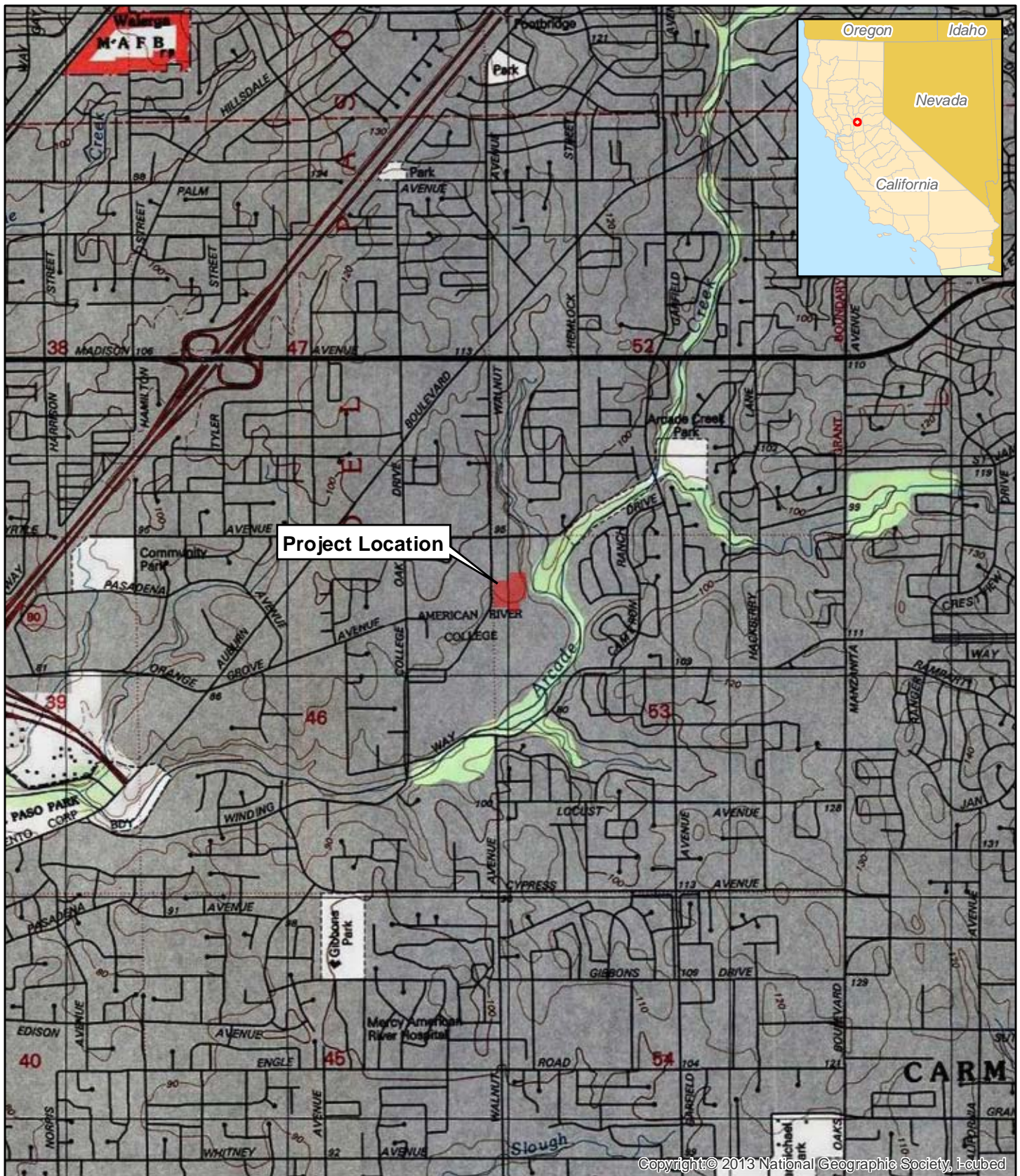


Figure 2. Project Location Map.

1:24,000

■ ARC Technical Building Project Area

0.5

_____ Miles

1

_____ Kilometers

Del Paso Land Grant (Presumed Section T9N, R6E, Section 9).
Citrus Heights 7.5' Series Quadrangle, USGS, 1978.





Figure 3. Project Area Map.

■ ARC Technical Education Building Project Area

Total Acreage = 5.17

1:1,800

0 100 Feet

0 50 Meters



ATTACHMENT B

Native American Outreach Documentation



December 26, 2019

Native American Heritage Commission
1550 Harbor Blvd, Suite 100
West Sacramento, CA 95691

To Whom It May Concern:

Petralogix Engineering, Inc. has recently retained Solano Archaeological Services (SAS) to conduct a California Environmental Quality Act (CEQA) level cultural resources inventory of an approximate 6-acre parcel located in the City of Sacramento, **Sacramento County**, for the proposed **American River College, Technology Building Modernization Project**. American River College is one of four colleges in the Los Rios Community College District (LRCCD). Funded by State of California Capital Outlay, the LRCCD proposes to modernize the Technology Building at the American River College, which is now used primarily by the Automotive, Welding Technology, and Electronic programs. The undertaking includes moving the Physics and Engineering programs that are also currently in the building and replacing them with other interdisciplinary programs. The proposed modernization will improve and reconfigure the technology of these spaces for improved circulation and access compliance. The modernization also provides improvements to power, lighting, data, and HVAC systems, as well as the replacement of three old temporary portable buildings with a new permanent space.

The American River College has the address of 4700 College Oak Drive, Sacramento, California 95841, approximately 1.2 miles east of Highway 80. The project area is situated on the *Citrus Heights, California* topographic 7.5-minute quadrangle, in the *Del Paso* land grant, projected Township 9 North, Range 6 East, Sections 46 and 53. Attached is a map depicting the project area.

Please know SAS is acting as proxy for Petralogix Engineering, Inc. and the LRCCD to facilitate AB52 consultation for this project. We would like to request a Sacred Land File (SLF) review for any known cultural resources in the project area. If you could please send us a list of Native American individuals/organizations that may have knowledge of cultural resources in the involved property, we would greatly appreciate it. We would like to request information from these individuals/entities about possible unrecorded cultural resources that may exist in the vicinity, and gather any recommendations they may have in regard to the project.

Please email SLF search results back to jason@solanoarchaeology.com.

If you have any questions, feel free to contact me at the numbers listed above. Thank you very much for your time.

Thanks,

A handwritten signature in blue ink, appearing to read "Jason Coleman", is written over a light blue circular stamp.

Jason Coleman
Principal Investigator and Owner

Enc. USGS topographic map

NATIVE AMERICAN HERITAGE COMMISSION
Cultural and Environmental Department
1550 Harbor Blvd., Suite 100
West Sacramento, CA 95691
Phone: (916) 373-3710
Email: nahc@nahc.ca.gov
Website: <http://www.nahc.ca.gov>
Twitter: @CA_NAHC



December 27, 2019

Jason Coleman
Solano Archeological Services

VIA Email to: jason@solanoarchaeology.com

RE: American River College, Technology Building Modernization Project, Sacramento County

Dear Mr. Coleman:

A record search of the Native American Heritage Commission (NAHC) Sacred Lands File (SLF) was completed for the information you have submitted for the above referenced project. The results were negative. However, the absence of specific site information in the SLF does not indicate the absence of cultural resources in any project area. Other sources of cultural resources should also be contacted for information regarding known and recorded sites.

Attached is a list of Native American tribes who may also have knowledge of cultural resources in the project area. This list should provide a starting place in locating areas of potential adverse impact within the proposed project area. I suggest you contact all of those indicated; if they cannot supply information, they might recommend others with specific knowledge. By contacting all those listed, your organization will be better able to respond to claims of failure to consult with the appropriate tribe. If a response has not been received within two weeks of notification, the Commission requests that you follow-up with a telephone call or email to ensure that the project information has been received.

If you receive notification of change of addresses and phone numbers from tribes, please notify the NAHC. With your assistance, we can assure that our lists contain current information. If you have any questions or need additional information, please contact me at my email address: Nancy.Gonzalez-Lopez@nahc.ca.gov.

Sincerely,

A handwritten signature in blue ink that reads "Nancy Gonzalez-Lopez".

Nancy Gonzalez-Lopez
Staff Services Analyst

Attachment

**Native American Heritage Commission
Native American Contacts List
December 27, 2019**

Buena Vista Rancheria of Me-Wuk Indians
Rhonda Morningstar Pope, Chairperson
1418 20th Street, Suite 200 Me-Wuk / Miwok
Sacramento CA 95811
rhonda@buenavistatribe.com
(916) 491-0011 Office
(916) 491-0012 Fax

Shingle Springs Band of Miwok Indians
Regina Cuellar, Chairperson
P.O. Box 1340 Miwok
Shingle Springs CA 95682 Maidu
rcuellar@ssband.org
(530) 387-4970
(530) 387-8067 Fax

Colfax-Todds Valley Consolidated Tribe
Pamela Cubbler, Treasurer
P.O. Box 4884 Miwok
Auburn CA 95604 Maidu
PCubbler@colfaxrancheria.com
(530) 320-3943

Tsi Akim Maidu
Grayson Coney, Cultural Director
P.O. Box 510 Maidu
Browns Valley CA 95918
tsi-akim-maidu@att.net
(530) 274-7497

Colfax-Todds Valley Consolidated Tribe
Clyde Prout, Chairman
P.O. Box 4884 Miwok
Auburn CA 95604 Maidu
miwokmaidu@yahoo.com
(916) 577-3558

Tsi Akim Maidu
Don Ryberg, Chairperson
P.O. Box 510 Maidu
Browns Valley CA 95918
tsi-akim-maidu@att.net
(530) 383-7234

Ione Band of Miwok Indians
Sara Dutschke Setchwaelo, Chairperson
9252 Bush Street, Suite 2 Miwok
Plymouth CA 95669
sara@ionemiwok.net
(209) 245-5800
(209) 256-9799

United Auburn Indian Community of the Auburn Rancheria
Gene Whitehouse, Chairperson
10720 Indian Hill Road Maidu
Auburn CA 95603 Miwok
bguth@auburnrancheria.com
(530) 883-2390 Office
(530) 883-2380 Fax

Nashville Enterprise Miwok-Maidu-Nishinam Tribe
Cosme A. Valdez, Chairperson
P.O. Box 580986 Miwok
Elk Grove CA 95758-001
valdezcome@comcast.net
(916) 429-8047 Voice/Fax
(916) 396-1173 Cell

Wilton Rancheria
Raymond Hitchcock, Chairperson
9728 Kent Street Miwok
Elk Grove CA 95624
rhitchcock@wiltonrancheria-nsn.gov
(916) 683-6000 Office
(916) 683-6015 Fax

This list is current as of the date of this document and is based on the information available to the Commission on the date it was produced.

Distribution of this list does not relieve any person of statutory responsibility as defined in Section 7050.5 of the Health and Safety Code, Section 5097.94 of the Public Resources Code, or Section 5097.98 of the Public Resources Code.

This list is only applicable for contacting local Native Americans Tribes for the proposed:
American River College, Technology Building Modernization Project, Sacramento County.



January 3, 2020

Tsi Akim Maidu
Attn. Grayson Coney, Cultural Director
P.O. Box 510
Browns Valley, CA 95918

RE: Cultural Resources Inventory for the American River College, Technology Building Modernization Project, Sacramento County, California

Dear Mr. Coney:

Petralogix Engineering, Inc. has recently retained Solano Archaeological Services (SAS) to conduct a California Environmental Quality Act (CEQA) level cultural resources inventory of an approximate 6-acre parcel located in the City of Sacramento, **Sacramento County**, for the proposed **American River College, Technology Building Modernization Project**. American River College is one of four colleges in the Los Rios Community College District (LRCCD). Funded by the State of California Capital Outlay program, the LRCCD proposes to modernize the Technology Building at the American River College, which is now used primarily by the Automotive, Welding Technology, and Electronic programs. The undertaking includes moving the Physics and Engineering programs that are also currently in the building and replacing them with other interdisciplinary programs. The proposed modernization will improve and reconfigure the technology of these spaces for improved circulation and access compliance. The modernization also provides improvements to power, lighting, data, and HVAC systems, as well as the replacement of three old temporary portable buildings with a new permanent space.

The American River College has the address of 4700 College Oak Drive, Sacramento, California 95841, approximately 1.2 miles east of Highway 80. The project area is situated on the *Citrus Heights, California* topographic 7.5-minute quadrangle, in the *Del Paso* land grant, projected Township 9 North, Range 6 East, Sections 46 and 53. Attached is a map depicting the project area.

The review of the Native American Heritage Commission Sacred Land File (SLF) had negative results, and the records search at the North Central Information Center at Sacramento State University is pending. On behalf of Petralogix Engineering, Inc. and the LRCCD, SAS is facilitating AB 52 consultation for this Project. We are writing to introduce the Project to you, and gather any information on undocumented sites that may exist in the project area. Any help would be greatly appreciated. Additionally, if you have any official recommendations you would like to make in regard to the Project and its undertaking, or have any questions about the Project, please feel free to contact us.

Thank you very much for your time.

Sincerely,

A handwritten signature in blue ink, appearing to read "Jason Coleman", is written over the word "Sincerely,".

Jason Coleman
Senior Archaeologist and Principal
jason@solanoarchaeology.com



January 3, 2020

Colfax-Todds Valley Consolidated Tribe
Attn. Pamela Cubbler, Treasurer
P.O. Box 4884
Auburn, CA 95604

RE: Cultural Resources Inventory for the American River College, Technology Building Modernization Project, Sacramento County, California

Dear Ms. Cubbler:

Petralogix Engineering, Inc. has recently retained Solano Archaeological Services (SAS) to conduct a California Environmental Quality Act (CEQA) level cultural resources inventory of an approximate 6-acre parcel located in the City of Sacramento, **Sacramento County**, for the proposed **American River College, Technology Building Modernization Project**. American River College is one of four colleges in the Los Rios Community College District (LRCCD). Funded by the State of California Capital Outlay program, the LRCCD proposes to modernize the Technology Building at the American River College, which is now used primarily by the Automotive, Welding Technology, and Electronic programs. The undertaking includes moving the Physics and Engineering programs that are also currently in the building and replacing them with other interdisciplinary programs. The proposed modernization will improve and reconfigure the technology of these spaces for improved circulation and access compliance. The modernization also provides improvements to power, lighting, data, and HVAC systems, as well as the replacement of three old temporary portable buildings with a new permanent space.

The American River College has the address of 4700 College Oak Drive, Sacramento, California 95841, approximately 1.2 miles east of Highway 80. The project area is situated on the *Citrus Heights, California* topographic 7.5-minute quadrangle, in the *Del Paso* land grant, projected Township 9 North, Range 6 East, Sections 46 and 53. Attached is a map depicting the project area.

The review of the Native American Heritage Commission Sacred Land File (SLF) had negative results, and the records search at the North Central Information Center at Sacramento State University is pending. On behalf of Petralogix Engineering, Inc. and the LRCCD, SAS is facilitating AB 52 consultation for this Project. We are writing to introduce the Project to you, and gather any information on undocumented sites that may exist in the project area. Any help would be greatly appreciated. Additionally, if you have any official recommendations you would like to make in regard to the Project and its undertaking, or have any questions about the Project, please feel free to contact us.

Thank you very much for your time.

Sincerely,

A handwritten signature in blue ink, appearing to read "Jason Coleman", is written over the word "Sincerely,".

Jason Coleman
Senior Archaeologist and Principal
jason@solanoarchaeology.com



January 3, 2020

Shingle Springs Band of Miwok Indians
Attn. Regina Cuellar, Chairperson
P.O. Box 1340
Shingle Springs, CA 95682

RE: Cultural Resources Inventory for the American River College, Technology Building Modernization Project, Sacramento County, California

Dear Ms. Cuellar:

Petralogix Engineering, Inc. has recently retained Solano Archaeological Services (SAS) to conduct a California Environmental Quality Act (CEQA) level cultural resources inventory of an approximate 6-acre parcel located in the City of Sacramento, **Sacramento County**, for the proposed **American River College, Technology Building Modernization Project**. American River College is one of four colleges in the Los Rios Community College District (LRCCD). Funded by the State of California Capital Outlay program, the LRCCD proposes to modernize the Technology Building at the American River College, which is now used primarily by the Automotive, Welding Technology, and Electronic programs. The undertaking includes moving the Physics and Engineering programs that are also currently in the building and replacing them with other interdisciplinary programs. The proposed modernization will improve and reconfigure the technology of these spaces for improved circulation and access compliance. The modernization also provides improvements to power, lighting, data, and HVAC systems, as well as the replacement of three old temporary portable buildings with a new permanent space.

The American River College has the address of 4700 College Oak Drive, Sacramento, California 95841, approximately 1.2 miles east of Highway 80. The project area is situated on the *Citrus Heights, California* topographic 7.5-minute quadrangle, in the *Del Paso* land grant, projected Township 9 North, Range 6 East, Sections 46 and 53. Attached is a map depicting the project area.

The review of the Native American Heritage Commission Sacred Land File (SLF) had negative results, and the records search at the North Central Information Center at Sacramento State University is pending. On behalf of Petralogix Engineering, Inc. and the LRCCD, SAS is facilitating AB 52 consultation for this Project. We are writing to introduce the Project to you, and gather any information on undocumented sites that may exist in the project area. Any help would be greatly appreciated. Additionally, if you have any official recommendations you would like to make in regard to the Project and its undertaking, or have any questions about the Project, please feel free to contact us.

Thank you very much for your time.

Sincerely,

A handwritten signature in blue ink, appearing to read "Jason Coleman", is written over the word "Sincerely,".

Jason Coleman
Senior Archaeologist and Principal
jason@solanoarchaeology.com



January 3, 2020

Wilton Rancheria
Attn. Raymond Hitchcock, Chairperson
9728 Kent Street
Elk Grove, CA 95624

RE: Cultural Resources Inventory for the American River College, Technology Building Modernization Project, Sacramento County, California

Dear Mr. Hitchcock:

Petralogix Engineering, Inc. has recently retained Solano Archaeological Services (SAS) to conduct a California Environmental Quality Act (CEQA) level cultural resources inventory of an approximate 6-acre parcel located in the City of Sacramento, **Sacramento County**, for the proposed **American River College, Technology Building Modernization Project**. American River College is one of four colleges in the Los Rios Community College District (LRCCD). Funded by the State of California Capital Outlay program, the LRCCD proposes to modernize the Technology Building at the American River College, which is now used primarily by the Automotive, Welding Technology, and Electronic programs. The undertaking includes moving the Physics and Engineering programs that are also currently in the building and replacing them with other interdisciplinary programs. The proposed modernization will improve and reconfigure the technology of these spaces for improved circulation and access compliance. The modernization also provides improvements to power, lighting, data, and HVAC systems, as well as the replacement of three old temporary portable buildings with a new permanent space.

The American River College has the address of 4700 College Oak Drive, Sacramento, California 95841, approximately 1.2 miles east of Highway 80. The project area is situated on the *Citrus Heights, California* topographic 7.5-minute quadrangle, in the *Del Paso* land grant, projected Township 9 North, Range 6 East, Sections 46 and 53. Attached is a map depicting the project area.

The review of the Native American Heritage Commission Sacred Land File (SLF) had negative results, and the records search at the North Central Information Center at Sacramento State University is pending. On behalf of Petralogix Engineering, Inc. and the LRCCD, SAS is facilitating AB 52 consultation for this Project. We are writing to introduce the Project to you, and gather any information on undocumented sites that may exist in the project area. Any help would be greatly appreciated. Additionally, if you have any official recommendations you would like to make in regard to the Project and its undertaking, or have any questions about the Project, please feel free to contact us.

Thank you very much for your time.

Sincerely,

A handwritten signature in blue ink, appearing to read "Jason Coleman", is written over the word "Sincerely,".

Jason Coleman
Senior Archaeologist and Principal
jason@solanoarchaeology.com



January 3, 2020

Buena Vista Rancheria of Me-Wuk Indians
Attn. Rhonda Morningstar Pope, Chairperson
1418 20th Street, Ste. 200
Sacramento, CA 95811

RE: Cultural Resources Inventory for the American River College, Technology Building Modernization Project, Sacramento County, California

Dear Ms. Morningstar Pope:

Petralogix Engineering, Inc. has recently retained Solano Archaeological Services (SAS) to conduct a California Environmental Quality Act (CEQA) level cultural resources inventory of an approximate 6-acre parcel located in the City of Sacramento, **Sacramento County**, for the proposed **American River College, Technology Building Modernization Project**. American River College is one of four colleges in the Los Rios Community College District (LRCCD). Funded by the State of California Capital Outlay program, the LRCCD proposes to modernize the Technology Building at the American River College, which is now used primarily by the Automotive, Welding Technology, and Electronic programs. The undertaking includes moving the Physics and Engineering programs that are also currently in the building and replacing them with other interdisciplinary programs. The proposed modernization will improve and reconfigure the technology of these spaces for improved circulation and access compliance. The modernization also provides improvements to power, lighting, data, and HVAC systems, as well as the replacement of three old temporary portable buildings with a new permanent space.

The American River College has the address of 4700 College Oak Drive, Sacramento, California 95841, approximately 1.2 miles east of Highway 80. The project area is situated on the *Citrus Heights, California* topographic 7.5-minute quadrangle, in the *Del Paso* land grant, projected Township 9 North, Range 6 East, Sections 46 and 53. Attached is a map depicting the project area.

The review of the Native American Heritage Commission Sacred Land File (SLF) had negative results, and the records search at the North Central Information Center at Sacramento State University is pending. On behalf of Petralogix Engineering, Inc. and the LRCCD, SAS is facilitating AB 52 consultation for this Project. We are writing to introduce the Project to you, and gather any information on undocumented sites that may exist in the project area. Any help would be greatly appreciated. Additionally, if you have any official recommendations you would like to make in regard to the Project and its undertaking, or have any questions about the Project, please feel free to contact us.

Thank you very much for your time.

Sincerely,

A handwritten signature in blue ink, appearing to read "Jason Coleman", is written over the word "Sincerely,".

Jason Coleman
Senior Archaeologist and Principal
jason@solanoarchaeology.com



January 3, 2020

Colfax-Todds Valley Consolidated Tribe
Attn. Clyde Prout, Chairperson
P.O. Box 4884
Auburn, CA 95604

RE: Cultural Resources Inventory for the American River College, Technology Building Modernization Project, Sacramento County, California

Dear Mr. Prout:

Petralogix Engineering, Inc. has recently retained Solano Archaeological Services (SAS) to conduct a California Environmental Quality Act (CEQA) level cultural resources inventory of an approximate 6-acre parcel located in the City of Sacramento, **Sacramento County**, for the proposed **American River College, Technology Building Modernization Project**. American River College is one of four colleges in the Los Rios Community College District (LRCCD). Funded by the State of California Capital Outlay program, the LRCCD proposes to modernize the Technology Building at the American River College, which is now used primarily by the Automotive, Welding Technology, and Electronic programs. The undertaking includes moving the Physics and Engineering programs that are also currently in the building and replacing them with other interdisciplinary programs. The proposed modernization will improve and reconfigure the technology of these spaces for improved circulation and access compliance. The modernization also provides improvements to power, lighting, data, and HVAC systems, as well as the replacement of three old temporary portable buildings with a new permanent space.

The American River College has the address of 4700 College Oak Drive, Sacramento, California 95841, approximately 1.2 miles east of Highway 80. The project area is situated on the *Citrus Heights, California* topographic 7.5-minute quadrangle, in the *Del Paso* land grant, projected Township 9 North, Range 6 East, Sections 46 and 53. Attached is a map depicting the project area.

The review of the Native American Heritage Commission Sacred Land File (SLF) had negative results, and the records search at the North Central Information Center at Sacramento State University is pending. On behalf of Petralogix Engineering, Inc. and the LRCCD, SAS is facilitating AB 52 consultation for this Project. We are writing to introduce the Project to you, and gather any information on undocumented sites that may exist in the project area. Any help would be greatly appreciated. Additionally, if you have any official recommendations you would like to make in regard to the Project and its undertaking, or have any questions about the Project, please feel free to contact us.

Thank you very much for your time.

Sincerely,

A handwritten signature in blue ink, appearing to read "Jason Coleman", is written over the word "Sincerely,".

Jason Coleman
Senior Archaeologist and Principal
jason@solanoarchaeology.com



January 3, 2020

Tsi Akim Maidu
Attn. Don Ryberg, Chairperson
P.O. Box 510
Browns Valley, CA 95918

RE: Cultural Resources Inventory for the American River College, Technology Building Modernization Project, Sacramento County, California

Dear Mr. Ryberg:

Petralogix Engineering, Inc. has recently retained Solano Archaeological Services (SAS) to conduct a California Environmental Quality Act (CEQA) level cultural resources inventory of an approximate 6-acre parcel located in the City of Sacramento, **Sacramento County**, for the proposed **American River College, Technology Building Modernization Project**. American River College is one of four colleges in the Los Rios Community College District (LRCCD). Funded by the State of California Capital Outlay program, the LRCCD proposes to modernize the Technology Building at the American River College, which is now used primarily by the Automotive, Welding Technology, and Electronic programs. The undertaking includes moving the Physics and Engineering programs that are also currently in the building and replacing them with other interdisciplinary programs. The proposed modernization will improve and reconfigure the technology of these spaces for improved circulation and access compliance. The modernization also provides improvements to power, lighting, data, and HVAC systems, as well as the replacement of three old temporary portable buildings with a new permanent space.

The American River College has the address of 4700 College Oak Drive, Sacramento, California 95841, approximately 1.2 miles east of Highway 80. The project area is situated on the *Citrus Heights, California* topographic 7.5-minute quadrangle, in the *Del Paso* land grant, projected Township 9 North, Range 6 East, Sections 46 and 53. Attached is a map depicting the project area.

The review of the Native American Heritage Commission Sacred Land File (SLF) had negative results, and the records search at the North Central Information Center at Sacramento State University is pending. On behalf of Petralogix Engineering, Inc. and the LRCCD, SAS is facilitating AB 52 consultation for this Project. We are writing to introduce the Project to you, and gather any information on undocumented sites that may exist in the project area. Any help would be greatly appreciated. Additionally, if you have any official recommendations you would like to make in regard to the Project and its undertaking, or have any questions about the Project, please feel free to contact us.

Thank you very much for your time.

Sincerely,

A handwritten signature in blue ink, appearing to read "Jason Coleman", is written over the word "Sincerely,".

Jason Coleman
Senior Archaeologist and Principal
jason@solanoarchaeology.com



January 3, 2020

Ione Band of Miwok Indians
Attn. Sara Dutschke Setchwaelo, Chairperson
9252 Bush Street, Ste. 2
Plymouth, CA 95669

RE: Cultural Resources Inventory for the American River College, Technology Building Modernization Project, Sacramento County, California

Dear Ms. Dutschke Setchwaelo:

Petralogix Engineering, Inc. has recently retained Solano Archaeological Services (SAS) to conduct a California Environmental Quality Act (CEQA) level cultural resources inventory of an approximate 6-acre parcel located in the City of Sacramento, **Sacramento County**, for the proposed **American River College, Technology Building Modernization Project**. American River College is one of four colleges in the Los Rios Community College District (LRCCD). Funded by the State of California Capital Outlay program, the LRCCD proposes to modernize the Technology Building at the American River College, which is now used primarily by the Automotive, Welding Technology, and Electronic programs. The undertaking includes moving the Physics and Engineering programs that are also currently in the building and replacing them with other interdisciplinary programs. The proposed modernization will improve and reconfigure the technology of these spaces for improved circulation and access compliance. The modernization also provides improvements to power, lighting, data, and HVAC systems, as well as the replacement of three old temporary portable buildings with a new permanent space.

The American River College has the address of 4700 College Oak Drive, Sacramento, California 95841, approximately 1.2 miles east of Highway 80. The project area is situated on the *Citrus Heights, California* topographic 7.5-minute quadrangle, in the *Del Paso* land grant, projected Township 9 North, Range 6 East, Sections 46 and 53. Attached is a map depicting the project area.

The review of the Native American Heritage Commission Sacred Land File (SLF) had negative results, and the records search at the North Central Information Center at Sacramento State University is pending. On behalf of Petralogix Engineering, Inc. and the LRCCD, SAS is facilitating AB 52 consultation for this Project. We are writing to introduce the Project to you, and gather any information on undocumented sites that may exist in the project area. Any help would be greatly appreciated. Additionally, if you have any official recommendations you would like to make in regard to the Project and its undertaking, or have any questions about the Project, please feel free to contact us.

Thank you very much for your time.

Sincerely,

A handwritten signature in blue ink, appearing to read "Jason Coleman", is written over a light blue circular stamp.

Jason Coleman
Senior Archaeologist and Principal
jason@solanoarchaeology.com



January 3, 2020

Nashville Enterprise Miwok-Maidu-Nishinam Tribe
Attn. Cosme A. Valdez, Chairperson
P.O. Box 580986
Elk Grove, CA 95758

RE: Cultural Resources Inventory for the American River College, Technology Building Modernization Project, Sacramento County, California

Dear Mr. Valdez:

Petralogix Engineering, Inc. has recently retained Solano Archaeological Services (SAS) to conduct a California Environmental Quality Act (CEQA) level cultural resources inventory of an approximate 6-acre parcel located in the City of Sacramento, **Sacramento County**, for the proposed **American River College, Technology Building Modernization Project**. American River College is one of four colleges in the Los Rios Community College District (LRCCD). Funded by the State of California Capital Outlay program, the LRCCD proposes to modernize the Technology Building at the American River College, which is now used primarily by the Automotive, Welding Technology, and Electronic programs. The undertaking includes moving the Physics and Engineering programs that are also currently in the building and replacing them with other interdisciplinary programs. The proposed modernization will improve and reconfigure the technology of these spaces for improved circulation and access compliance. The modernization also provides improvements to power, lighting, data, and HVAC systems, as well as the replacement of three old temporary portable buildings with a new permanent space.

The American River College has the address of 4700 College Oak Drive, Sacramento, California 95841, approximately 1.2 miles east of Highway 80. The project area is situated on the *Citrus Heights, California* topographic 7.5-minute quadrangle, in the *Del Paso* land grant, projected Township 9 North, Range 6 East, Sections 46 and 53. Attached is a map depicting the project area.

The review of the Native American Heritage Commission Sacred Land File (SLF) had negative results, and the records search at the North Central Information Center at Sacramento State University is pending. On behalf of Petralogix Engineering, Inc. and the LRCCD, SAS is facilitating AB 52 consultation for this Project. We are writing to introduce the Project to you, and gather any information on undocumented sites that may exist in the project area. Any help would be greatly appreciated. Additionally, if you have any official recommendations you would like to make in regard to the Project and its undertaking, or have any questions about the Project, please feel free to contact us.

Thank you very much for your time.

Sincerely,

A handwritten signature in blue ink, appearing to read "Jason Coleman", is written over the word "Sincerely,".

Jason Coleman
Senior Archaeologist and Principal
jason@solanoarchaeology.com



January 3, 2020

United Auburn Indian Community of the Auburn Rancheria
Attn. Gene Whitehouse, Chairperson
10720 Indian Hill Road
Auburn, CA 95603

RE: Cultural Resources Inventory for the American River College, Technology Building Modernization Project, Sacramento County, California

Dear Mr. Whitehouse:

Petralogix Engineering, Inc. has recently retained Solano Archaeological Services (SAS) to conduct a California Environmental Quality Act (CEQA) level cultural resources inventory of an approximate 6-acre parcel located in the City of Sacramento, **Sacramento County**, for the proposed **American River College, Technology Building Modernization Project**. American River College is one of four colleges in the Los Rios Community College District (LRCCD). Funded by the State of California Capital Outlay program, the LRCCD proposes to modernize the Technology Building at the American River College, which is now used primarily by the Automotive, Welding Technology, and Electronic programs. The undertaking includes moving the Physics and Engineering programs that are also currently in the building and replacing them with other interdisciplinary programs. The proposed modernization will improve and reconfigure the technology of these spaces for improved circulation and access compliance. The modernization also provides improvements to power, lighting, data, and HVAC systems, as well as the replacement of three old temporary portable buildings with a new permanent space.

The American River College has the address of 4700 College Oak Drive, Sacramento, California 95841, approximately 1.2 miles east of Highway 80. The project area is situated on the *Citrus Heights, California* topographic 7.5-minute quadrangle, in the *Del Paso* land grant, projected Township 9 North, Range 6 East, Sections 46 and 53. Attached is a map depicting the project area.

The review of the Native American Heritage Commission Sacred Land File (SLF) had negative results, and the records search at the North Central Information Center at Sacramento State University is pending. On behalf of Petralogix Engineering, Inc. and the LRCCD, SAS is facilitating AB 52 consultation for this Project. We are writing to introduce the Project to you, and gather any information on undocumented sites that may exist in the project area. Any help would be greatly appreciated. Additionally, if you have any official recommendations you would like to make in regard to the Project and its undertaking, or have any questions about the Project, please feel free to contact us.

Thank you very much for your time.

Sincerely,

A handwritten signature in blue ink, appearing to read "Jason Coleman", is written over the word "Sincerely,".

Jason Coleman
Senior Archaeologist and Principal
jason@solanoarchaeology.com

California Capital Outlay for 3 Community College Campus Projects

Jason Coleman <jason@solanoarchaeology.com>

Tue 1/7/2020 10:57 AM

To: Rhonda Pope <rhonda@buenavistatribe.com>; PCubbler@colfaxrancheria.com <PCubbler@colfaxrancheria.com>; miwokmaidu@yahoo.com <miwokmaidu@yahoo.com>; Sara <sara@ionemiwok.net>; valdezcome@comcast.net <valdezcome@comcast.net>; rcuellar@ssband.org <rcuellar@ssband.org>; tsi-akim-maidu@att.net <tsi-akim-maidu@att.net>; bguth@auburnrancheria.com <bguth@auburnrancheria.com>; Raymond Hitchcock <rhitchcock@wiltonrancheria-nsn.gov>
Cc: Susan Talcott <susan@solanoarchaeology.com>

 2 attachments (4 MB)

Fig3_ProjectArea_AmerRiv.pdf; Fig3_ProjectArea_FolsomLake.pdf;

Hi folks,

I am writing to follow up letters we mailed to you on January 3, 2020. Petralogix Engineering, Inc. has recently retained Solano Archaeological Services (SAS) to conduct CEQA level cultural inventories for three projects in Sacramento County involving California Capital Outlay funding. The three projects are:

1. American River College, Technology Building Modernization Project (ARC Tech Building Project)
2. Elk Grove Center Project
3. Folsom Lake College Project

Project area maps for all three are attached, and we have pasted all three letters below my signature line. Please know that the Native American Heritage Commission, the North Central Information Center, and the pedestrian survey for all three projects were negative for pre-contact cultural resources. As SAS is facilitating AB 52 consultation for these projects, we requesting information on unrecorded resources that may lie in the vicinity of the project areas, and any project based recommendations you may have. We will be recording all recommendations in the CEQA report for each project, and we will forward all questions and concerns to the lead agency involved for each project. For the ARC Tech Building Project and the Folsom Lake College Project, the lead agency is the Los Rios Community College District. The Cosumnes River College is the lead agency for the Elk Grove Center Project.

Any information you have on any of the three projects would be greatly appreciated. Thanks for your time, and please feel free to contact us any time.

Regard,

Jason Coleman

Jason A. Coleman, M.A., R.P.A.

Owner and Principal

131 Sunset Avenue, Ste. E 120

Suisun City, CA 94585

Phone 707-718-1416 Fax 707-451-4775

www.solanoarchaeology.com



RE: Cultural Resources Inventory for the **American River College, Technology Building Modernization Project**, Sacramento County, California

Petralogix Engineering, Inc. has recently retained Solano Archaeological Services (SAS) to conduct a California Environmental Quality Act (CEQA) level cultural resources inventory of an approximate 6-acre parcel located in the City of Sacramento, **Sacramento County**, for the proposed **American River College, Technology Building Modernization Project**. American River College is one of four colleges in the Los Rios Community College District (LRCCD). Funded by the State of California Capital Outlay program, the LRCCD proposes to modernize the Technology Building at the American River College, which is now used primarily by the Automotive, Welding Technology, and Electronic programs. The undertaking includes moving the Physics and Engineering programs that are also currently in the building and replacing them with other interdisciplinary programs. The proposed modernization will improve and reconfigure the technology of these spaces for improved circulation and access compliance. The modernization also provides improvements to power, lighting, data, and HVAC systems, as well as the replacement of three old temporary portable buildings with a new permanent space.

The American River College has the address of 4700 College Oak Drive, Sacramento, California 95841, approximately 1.2 miles east of Highway 80. The project area is situated on the *Citrus Heights, California* topographic 7.5-minute quadrangle, in the *Del Paso* land grant, projected Township 9 North, Range 6 East, Sections 46 and 53. Attached is a map depicting the project area.

The review of the Native American Heritage Commission Sacred Land File (SLF) had negative results, and the records search at the North Central Information Center at Sacramento State University is pending. On behalf of Petralogix Engineering, Inc. and the LRCCD, SAS is facilitating AB 52 consultation for this Project. We are writing to introduce the Project to you, and gather any information on undocumented sites that may exist in the project area. Any help would be greatly appreciated. Additionally, if you have any official recommendations you would like to make in regard to the Project and its undertaking, or have any questions about the Project, please feel free to contact us.

RE: Cultural Resources Inventory for the **Elk Grove Center Project**, Sacramento County, California

Petralogix Engineering, Inc. has recently retained Solano Archaeological Services (SAS) to conduct a California Environmental Quality Act (CEQA) level cultural resources inventory of an approximate 2-acre parcel located in Elk Grove, **Sacramento County**, for the proposed **Elk Grove Center Project**. The Elk Grove Center is a State approved educational center for Cosumnes River College. As part of a State of California Capital Outlay, Cosumnes River College proposes to construct an additional instructional building comprising approximately 15,200 square feet adjacent to the existing instructional building that lies immediately to the northeast.

The current Elk Grove Center facility has the address of 10051 Big Horn Blvd, Elk Grove, California, 95757, approximately one mile west of Highway 99. The project area is situated on the *Florin, California* topographic 7.5 minute quadrangle, Township 6 North, Range 5 East, Section 11. Attached is a map depicting the project area.

The review of the Native American Heritage Commission Sacred Land File (SLF) had negative results, and the records search at the North Central Information Center at Sacramento State University yielded a single historic-era resource (residential complex) in the project area. On behalf of Petralogix Engineering, Inc. and the Cosumnes River College, SAS is facilitating AB 52 consultation for this Project. We are writing to introduce the Project to you, and gather any information on undocumented sites that may exist in the project area. Any help would be

greatly appreciated. Additionally, if you have any official recommendations you would like to make in regard to the Project and its undertaking, or have any questions about the Project, please feel free to contact us.

RE: Cultural Resources Inventory for the **Folsom Lake College Project**, Sacramento County, California

Petralogix Engineering, Inc. has recently retained Solano Archaeological Services (SAS) to conduct a California Environmental Quality Act (CEQA) level cultural resources inventory of an approximate 5-acre parcel located in Folsom, **Sacramento County**, for the proposed **Folsom Lake College Project**. Folsom Lake College is the newest of the four colleges in the Los Rios Community College District. As part of a State of California Capital Outlay, the Los Rios Community College District proposes to construct a new instructional building comprising approximately 48,900 square feet to be used for instructional, office, and support spaces for the chemistry, biology, physical sciences, and career and technical departments.

The current Folsom Lake College has the address of 10 College Parkway, Folsom, California, 95630, approximately 1.2 miles north of Highway 50. The project area is situated on the *Clarksville, California* topographic 7.5 minute quadrangle, Township 9 North, Range 8 East, Section 5. Attached is a map depicting the project area.

The review of the Native American Heritage Commission Sacred Land File (SLF) had negative results, and the records search at the North Central Information Center at Sacramento State University yielded a single historic-era resource (Folsom Mining District Dredger Tailings) in the project area. On behalf of Petralogix Engineering, Inc. and the Cosumnes River College, SAS is facilitating AB 52 consultation for this Project. We are writing to introduce the Project to you, and gather any information on undocumented sites that may exist in the project area.

Any help would be greatly appreciated. Additionally, if you have any official recommendations you would like to make in regard to the Project and its undertaking, or have any questions about the Project, please feel free to contact us.

Sacramento County Community College Improvement Projects

Jason Coleman <jason@solanoarchaeology.com>

Fri 1/10/2020 8:27 AM

To: Rhonda Pope <rhonda@buenavistatribe.com>; PCubbler@colfaxrancheria.com <PCubbler@colfaxrancheria.com>; miwokmaidu@yahoo.com <miwokmaidu@yahoo.com>; Sara <sara@ionemiwok.net>; valdezcome@comcast.net <valdezcome@comcast.net>; rcuellar@ssband.org <rcuellar@ssband.org>; tsi-akim-maidu@att.net <tsi-akim-maidu@att.net>; bguth@auburnrancheria.com <bguth@auburnrancheria.com>; Raymond Hitchcock <rhitchcock@wiltonrancheria-nsn.gov>

Hi folks,

I am writing to follow up again letters we mailed to you on January 3, 2020. Petralogix Engineering, Inc. has recently retained Solano Archaeological Services (SAS) to conduct CEQA level cultural inventories for three projects in Sacramento County involving California Capital Outlay funding. The three projects are:

1. American River College, Technology Building Modernization Project (ARC Tech Building Project)
2. Elk Grove Center Project
3. Folsom Lake College Project

As we mentioned in the last email, no pre-contact material was identified in any of the three projects. As SAS is facilitating AB 52 consultation for these projects, we requesting information on unrecorded resources that may lie in the vicinity of the project areas, and any project based recommendations you may have. We will be recording all recommendations in the CEQA report for each project, and we will forward all questions and concerns to the lead agency involved for each project. For the ARC Tech Building Project and the Folsom Lake College Project, the lead agency is the Los Rios Community College District. The Cosumnes River College is the lead agency for the Elk Grove Center Project.

Any assistance you could provide would be greatly appreciated.

Thanks,

Jason Coleman

Jason A. Coleman, M.A., R.P.A.
Owner and Principal
131 Sunset Avenue, Ste. E 120
Suisun City, CA 94585
Phone 707-718-1416 Fax 707-451-4775
www.solanoarchaeology.com



Native American Consultation Log

Project: American River College, Technology Building Modernization Project,
Sacramento County

Native American Contact	Contacted By	Date of Communication	Responses
Rhonda Morningstar Pope	Jason Coleman	January 3, 2020	Mailed letter and map introducing the project, stating that SAS was facilitating Ab 52 consultation, and asking for information on any known unrecorded resources.
	Jason Coleman	January 7, 2020	Sent email stating the results of the project, re-introducing the project undertaking, and requesting consultation and any information on known unrecorded resources.
	Jason Coleman	January 10, 2020	Sent email stating the results of the project, also stated that SAS was facilitating AB 52 consultation, and requested consultation and any information on known unrecorded resources.
Regina Cuellar	Jason Coleman	January 3, 2020	Mailed letter and map introducing the project, stating that SAS was facilitating Ab 52 consultation, and asking for information on any known unrecorded resources.
	Jason Coleman	January 7, 2020	Sent email stating the results of the project, re-introducing the project undertaking, and requesting consultation and any information on known unrecorded resources.
	Jason Coleman	January 10, 2020	Sent email stating the results of the project, also stated that SAS was facilitating AB 52 consultation, and requested consultation and any information on known unrecorded resources.
Pamela Cubbler	Jason Coleman	January 3, 2020	Mailed letter and map introducing the project, stating that SAS was facilitating Ab 52 consultation, and asking for information on any known unrecorded resources.
	Jason Coleman	January 7, 2020	Sent email stating the results of the project, re-introducing the project undertaking, and requesting consultation and any information on known unrecorded resources.
	Jason Coleman	January 10, 2020	Sent email stating the results of the project, also stated that SAS was facilitating AB 52 consultation, and requested consultation and any information on known unrecorded resources.
Grayson Coney	Jason Coleman	January 3, 2020	Mailed letter and map introducing the project,

Solano Archaeological Services

	Jason Coleman	January 7, 2020	stating that SAS was facilitating Ab 52 consultation, and asking for information on any known unrecorded resources.
	Jason Coleman	January 10, 2020	Sent email stating the results of the project, re-introducing the project undertaking, and requesting consultation and any information on known unrecorded resources.
Clyde Prout	Jason Coleman	January 3, 2020	Mailed letter and map introducing the project, stating that SAS was facilitating Ab 52 consultation, and asking for information on any known unrecorded resources.
	Jason Coleman	January 7, 2020	Sent email stating the results of the project, re-introducing the project undertaking, and requesting consultation and any information on known unrecorded resources.
	Jason Coleman	January 10, 2020	Sent email stating the results of the project, also stated that SAS was facilitating AB 52 consultation, and requested consultation and any information on known unrecorded resources.
Don Ryberg	Jason Coleman	January 3, 2020	Mailed letter and map introducing the project, stating that SAS was facilitating Ab 52 consultation, and asking for information on any known unrecorded resources.
	Jason Coleman	January 7, 2020	Sent email stating the results of the project, re-introducing the project undertaking, and requesting consultation and any information on known unrecorded resources.
	Jason Coleman	January 10, 2020	Sent email stating the results of the project, also stated that SAS was facilitating AB 52 consultation, and requested consultation and any information on known unrecorded resources.
Sara Dutschke Setchwaelo	Jason Coleman	January 3, 2020	Mailed letter and map introducing the project, stating that SAS was facilitating Ab 52 consultation, and asking for information on any known unrecorded resources.
	Jason Coleman	January 7, 2020	Sent email stating the results of the project, re-introducing the project undertaking, and requesting consultation and any information on known unrecorded resources.
	Jason Coleman	January 10, 2020	Sent email stating the results of the project, also stated that SAS was facilitating AB 52

Solano Archaeological Services

			consultation, and requested consultation and any information on known unrecorded resources.
Gene Whitehouse	Jason Coleman	January 3, 2020	Mailed letter and map introducing the project, stating that SAS was facilitating Ab 52 consultation, and asking for information on any known unrecorded resources.
	Jason Coleman	January 7, 2020	Sent email stating the results of the project, re-introducing the project undertaking, and requesting consultation and any information on known unrecorded resources.
	Jason Coleman	January 10, 2020	Sent email stating the results of the project, also stated that SAS was facilitating AB 52 consultation, and requested consultation and any information on known unrecorded resources.
Cosme A. Valdez	Jason Coleman	January 3, 2020	Mailed letter and map introducing the project, stating that SAS was facilitating Ab 52 consultation, and asking for information on any known unrecorded resources.
	Jason Coleman	January 7, 2020	Sent email stating the results of the project, re-introducing the project undertaking, and requesting consultation and any information on known unrecorded resources.
	Jason Coleman	January 10, 2020	Sent email stating the results of the project, also stated that SAS was facilitating AB 52 consultation, and requested consultation and any information on known unrecorded resources.
Raymond Hitchcock	Jason Coleman	January 3, 2020	Mailed letter and map introducing the project, stating that SAS was facilitating Ab 52 consultation, and asking for information on any known unrecorded resources.
	Jason Coleman	January 7, 2020	Sent email stating the results of the project, re-introducing the project undertaking, and requesting consultation and any information on known unrecorded resources.
	Jason Coleman	January 10, 2020	Sent email stating the results of the project, also stated that SAS was facilitating AB 52 consultation, and requested consultation and any information on known unrecorded resources.

ATTACHMENT C

Records Search Documentation



1/2/2020

NCIC File No.: SAC-20-1

Susan Talcott
Solano Archaeological Services
131 Sunset Avenue, #120
Suisun City, CA 94585

**Records Search Invoice for
ARC Technology Building**

Quantity	Description	Unit Price	Line Total
0	Staff research hours	150.00	0.00
1	In-house research hours	100.00	100.00
0	Staff assistance hours	40.00	0.00
12	Custom map features		75.00
0	Shapefile features	12.00	0.00
0	Digital database features	0.25	0.00
0	Quads (crossed into)		
4	Printed pages/PDF pages	0.15	0.60
Subtotal			175.60
Priority 50% fee			
Total			175.60

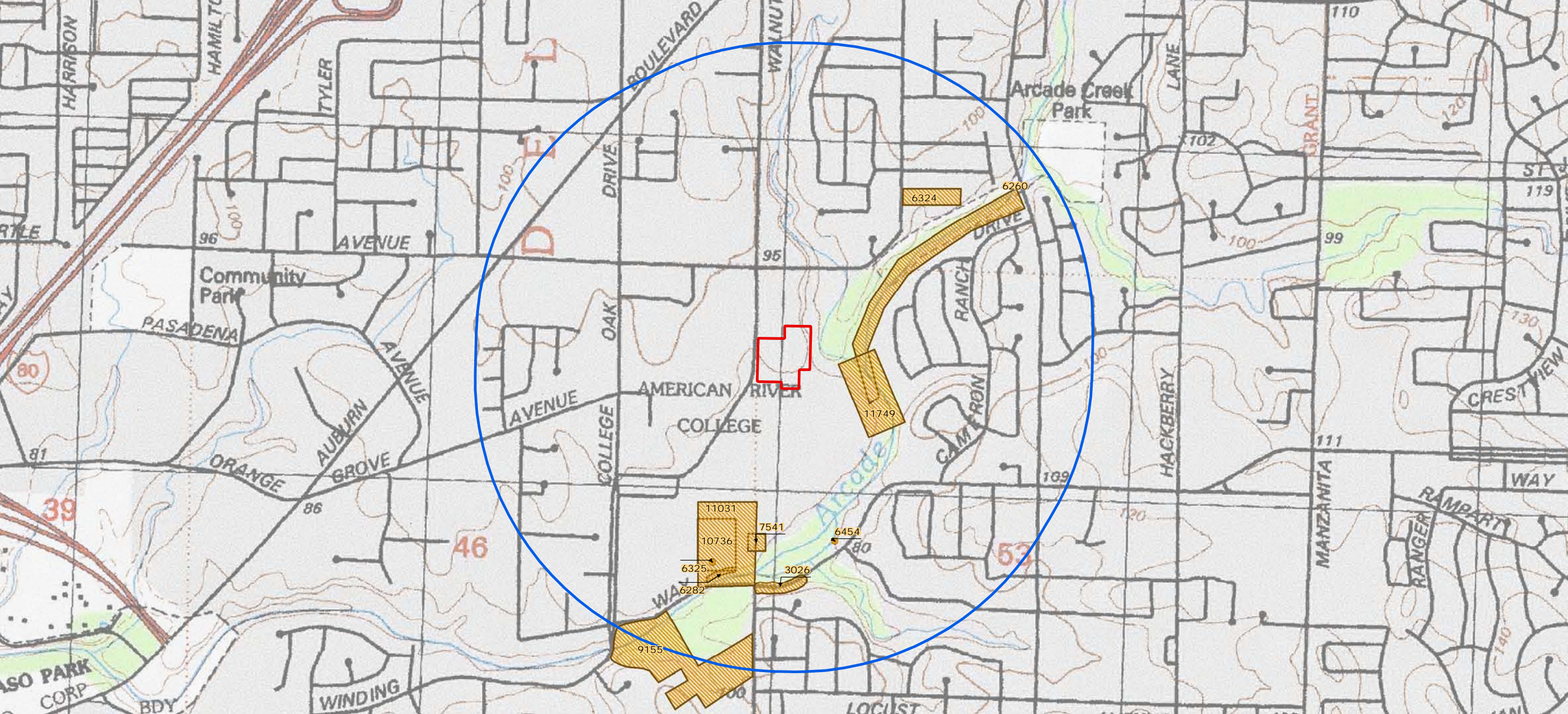
Forward payment to:

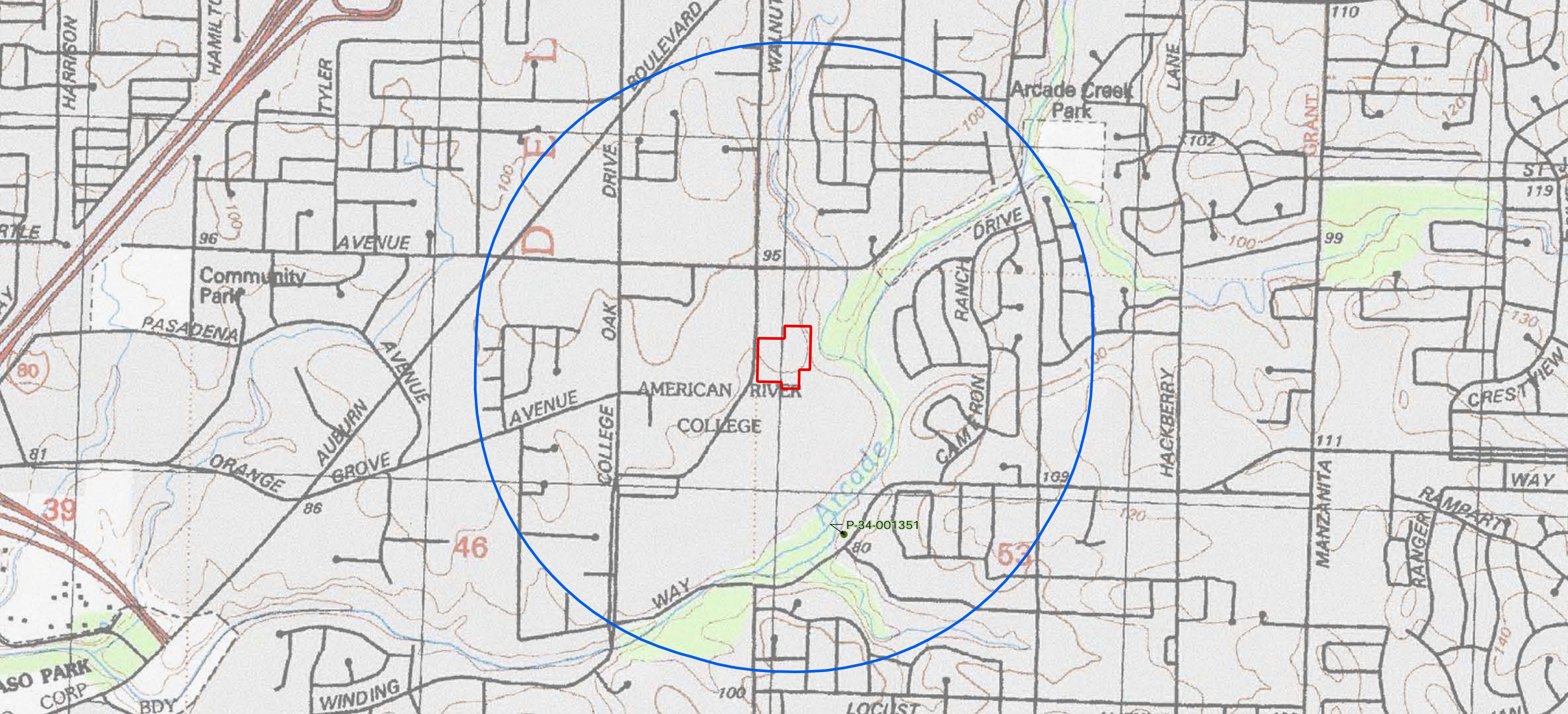
North Central Information Center
California State University, Sacramento | Folsom Hall, Suite 2042
6000 J Street | Sacramento, CA 95819-6100

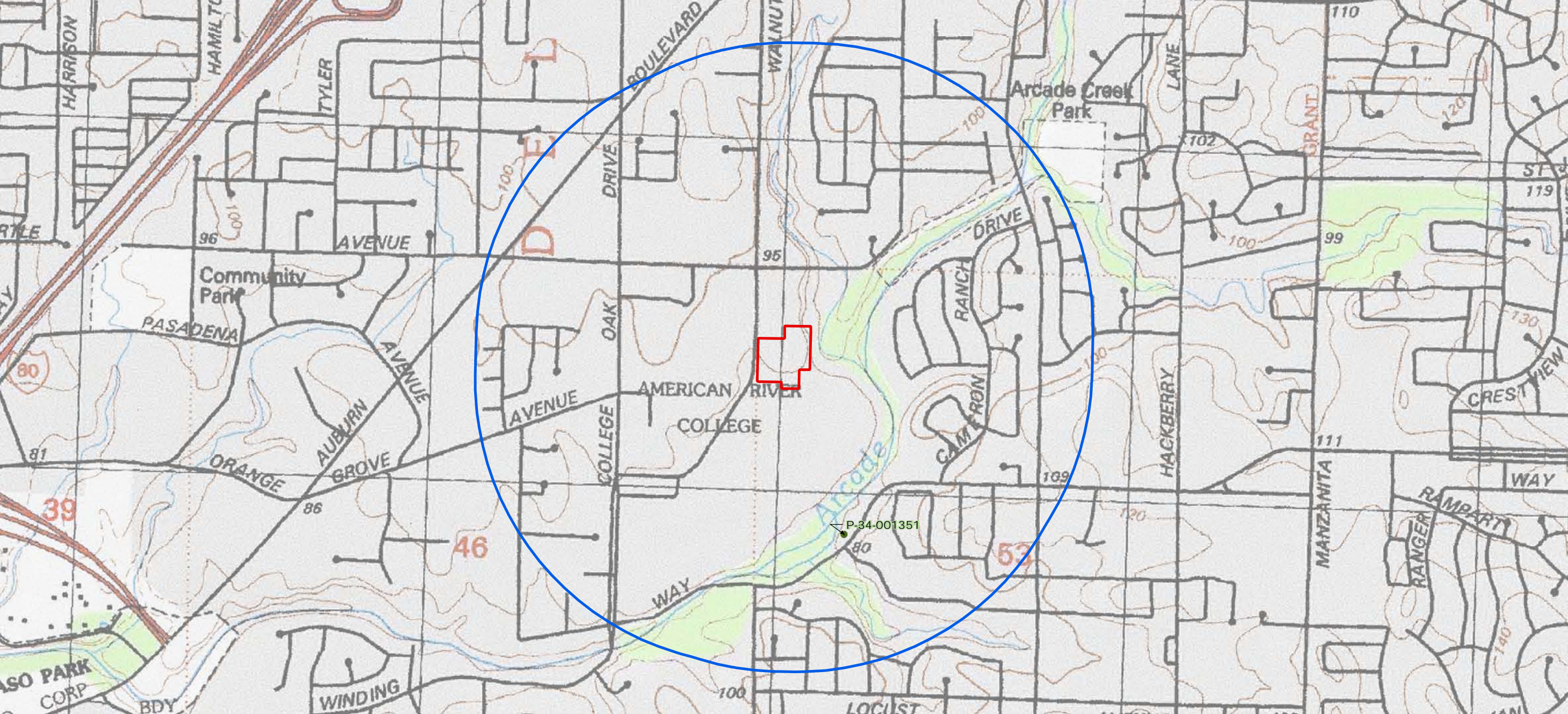
Make checks payable to:

University Enterprises, Inc.

To view the CHRIS IC Electronic Fee Structure please visit:
http://ohp.parks.ca.gov/pages/1068/files/CHRIS_IC_Fee_Structure.pdf







Resource Detail: P-34-001351

Identifying information

Primary No.: P-34-001351

Trinomial:

Name:

Other IDs:

Cross-refs:

Attributes

Resource type: Building

Age: Historic

Information base: Survey

Attribute codes: HP02 (Single family property)

Disclosure: Unrestricted

Collections:

Accession no(s):

Facility:

General notes

Recording events

Date	Recorder(s)	Affiliation	Notes
7/21/2004	David Livingstone	URS Corp.	

Associated reports

Report No.	Year	Title	Affiliation
006454	2004	Sacramento County Flood Hazard Mitigation, Sacramento County Department of Water Resources	US Department of Homeland Security

Location information

County: Sacramento

USGS quad(s): CITRUS HTS

Address: Address	City	Assessor's parcel no.	Zip code
5213 Winding Way	Carmichael	230-0230-013-0000	

PLSS: T9N R6E Sec. MDBM

UTMs:

Management status

Database record metadata

Date	User
------	------

Entered: 11/13/2006 jay

Last modified: 6/27/2017 jacobmackey

IC actions: Date	User	Action taken
11/13/2006	jay	Imported data from NCIC Excel spreadsheet
1/8/2008	wilson	Imported data from site record-Machiel Van Dordrecht

Record status: Verified

ATTACHMENT D

Photographs



Plate 1. Fenced auto shop lot at the northeast corner of the Project area, facing southwest.



Plate 2. Oak riparian woodland adjacent to the east side of the project area, facing south.



Plate 3. Grass landscaping in between buildings on the southeast corner of the Project area, facing west



Plate 4. Grass landscaping in between buildings on the southeast corner of the Project area, facing west



Plate 5. Fenced greenhouse/shed in the southeast corner of the Project area, facing south



Plate 6. Native California vegetation garden and Physics Engineering building in the south west corner of the Project area, facing east



Plate 7. Portable classrooms, outbuildings, and grass landscaping in the south side of the Project area, facing south



Plate 8. North border of the Project area next to the welding department, facing north.



Plate 9. North border of the Project area next to the welding department, facing south