

FIGURE 1

LSA

LEGEND

- City of Clearlake
- Existing Landfill Refuse Limit
- Proposed Landfill Expansion Area
- Proposed Storm Water Basin

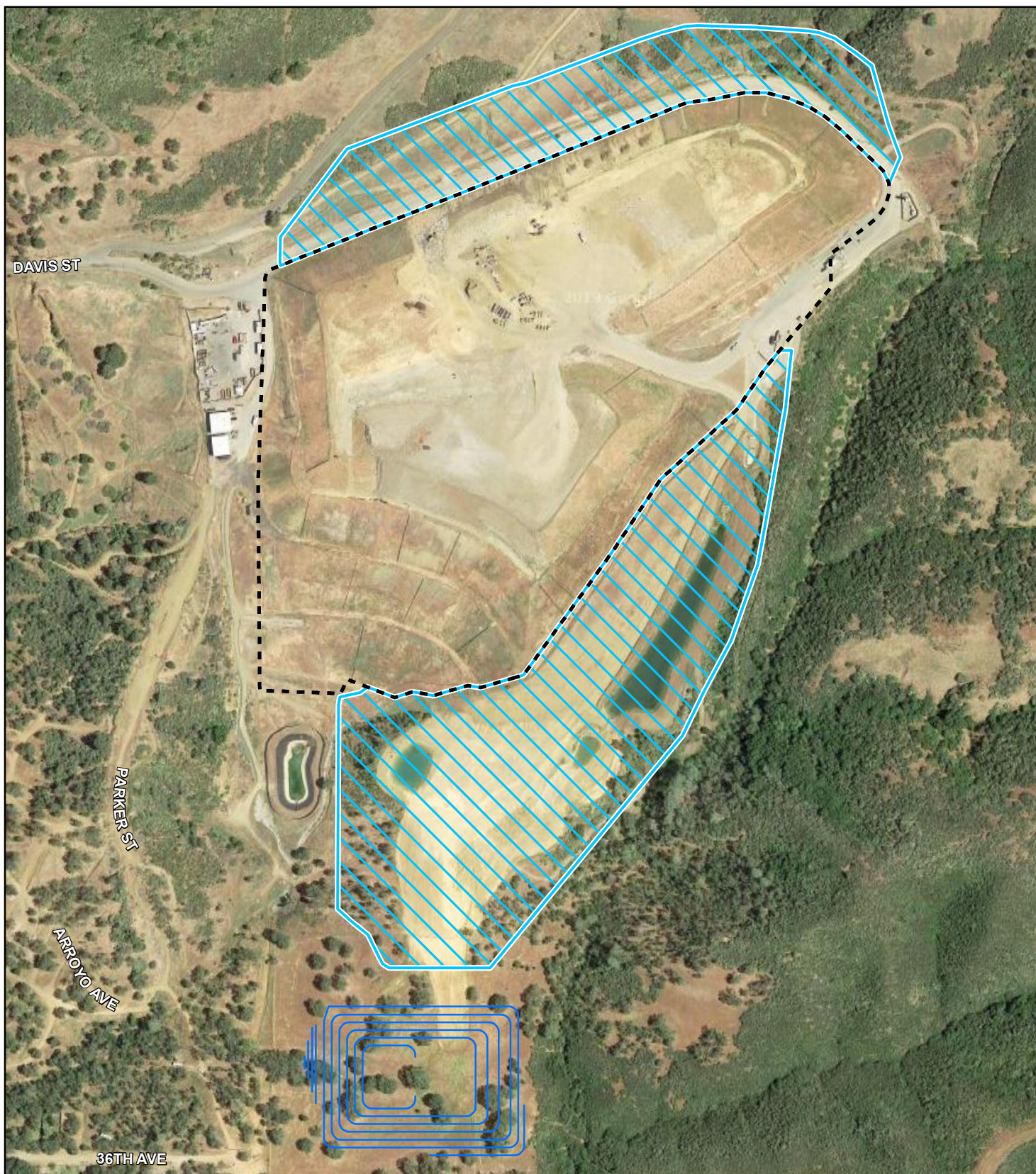


0 250 500
FEET

SOURCE: Google (2018); SCS Engineers (8/2019)

I:\SCN1901\GIS\MXD\ProjectLocation.mxd (8/15/2019)

Eastlake Sanitary Landfill Expansion Project
Project Location



LSA

LEGEND

- Existing Landfill Refuse Limit (36.0 acres)
- Proposed expansion area beyond existing refuse limit (24.5 acres)
- Proposed Storm Water Basin

FIGURE 2



0 175 350
FEET

SOURCE: Google (2018); SCS Engineers (8/2019)

I:\SCN1901\GIS\MXD\ProjectDetail.mxd (8/15/2019)





Eastlake Sanitary Landfill Expansion Project
Project Detail



FIGURE 4

LSA

LEGEND

-  Existing Landfill Refuse Limit
-  Proposed expansion area beyond existing refuse limit
-  Stormwater Basin
-  24-hour Long-Term Monitoring Locations



0 225 450
FEET

SOURCE: Google (2018); SCS Engineers (8/2019)

I:\SCN1901\GIS\MXD\NoiseMonitoringLocations.mxd (10/17/2019)

Eastlake Sanitary Landfill Expansion Project
Noise Monitoring Locations

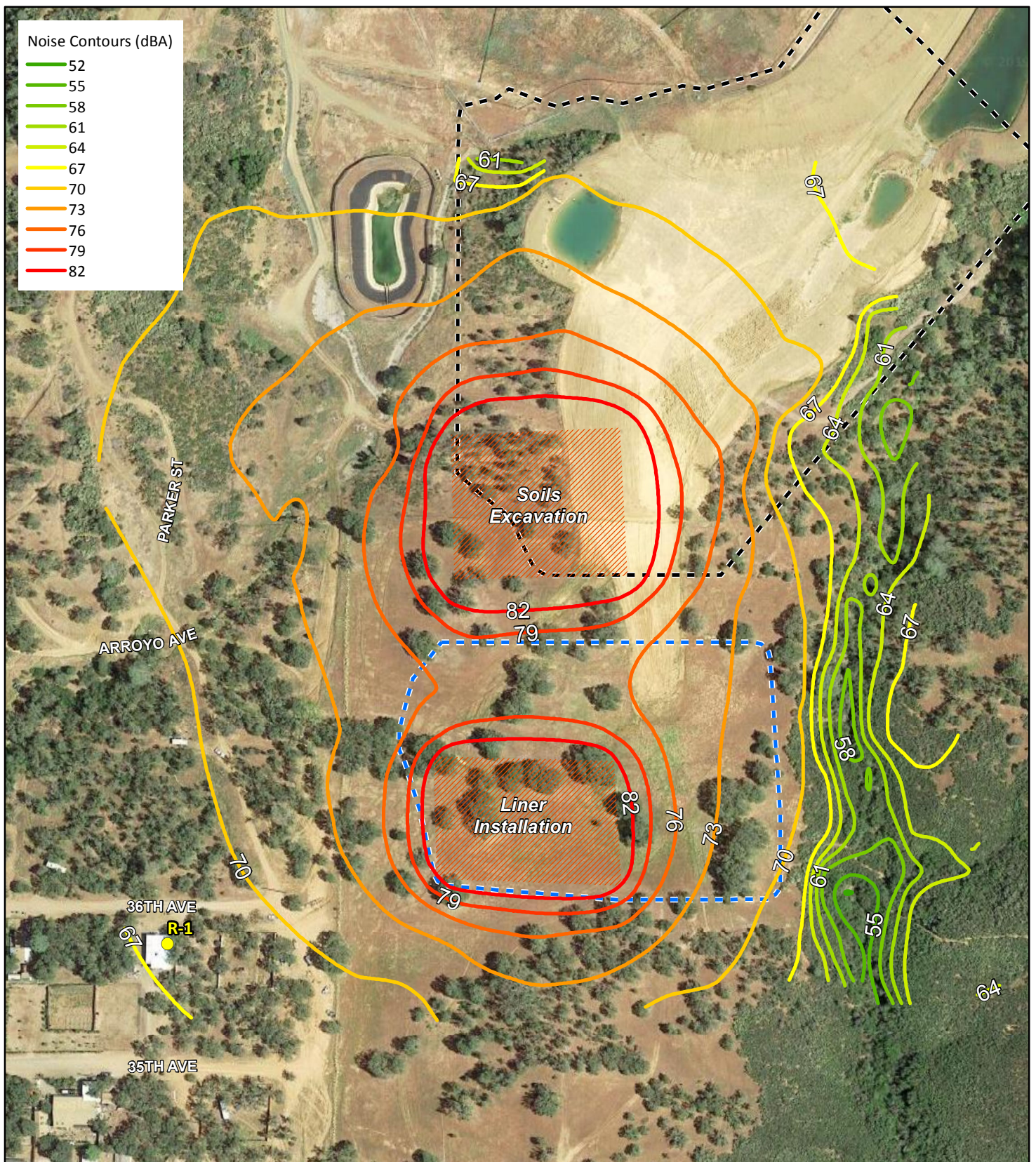


FIGURE 5

LSA

LEGEND

- Expansion Area - Phase 2
- Stormwater Basin
- Construction Activities
- Receiver



0 100 200
FEET

SOURCE: Google (2018); SCS Engineers (8/2019)

I:\SCN1901\GIS\MXD\ConstructionNoiseImpacts.mxd (10/17/2019)

Eastlake Sanitary Landfill Expansion Project
Construction Noise Impacts - Phase 2

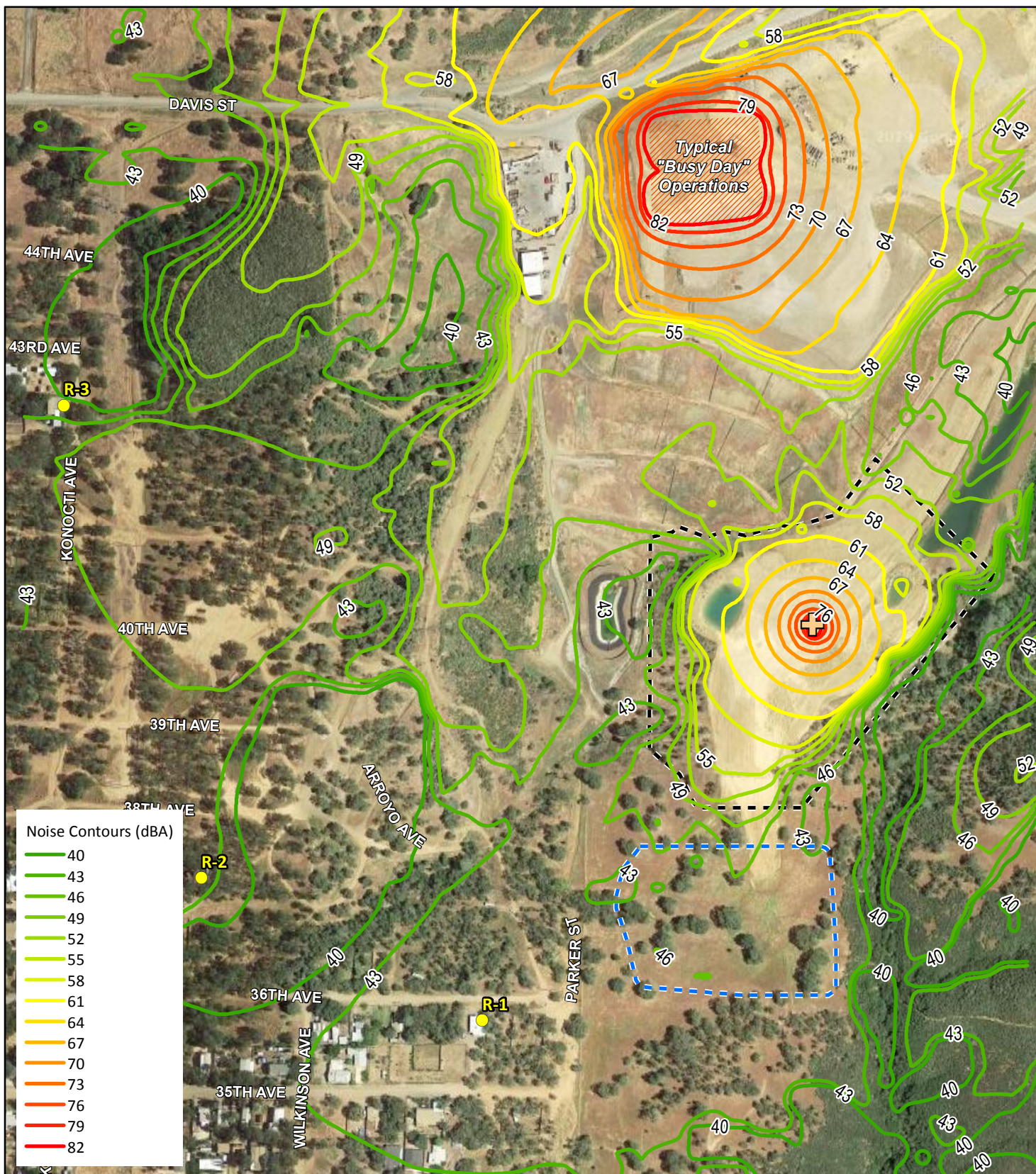


FIGURE 6

LSA

LEGEND

- Expansion Area - Phase 2
- Stormwater Basin

- + Rock Crushing & Scraper Activities
- Typical "Busy Day" Operations
- Receiver



0 175 350
FEET

SOURCE: Google (2018); SCS Engineers (8/2019)

I:\SCN1901\GIS\MXD\ExistingOperationsNoiseImpacts.mxd (10/17/2019)

Eastlake Sanitary Landfill Expansion Project
Existing Operations Noise Impacts

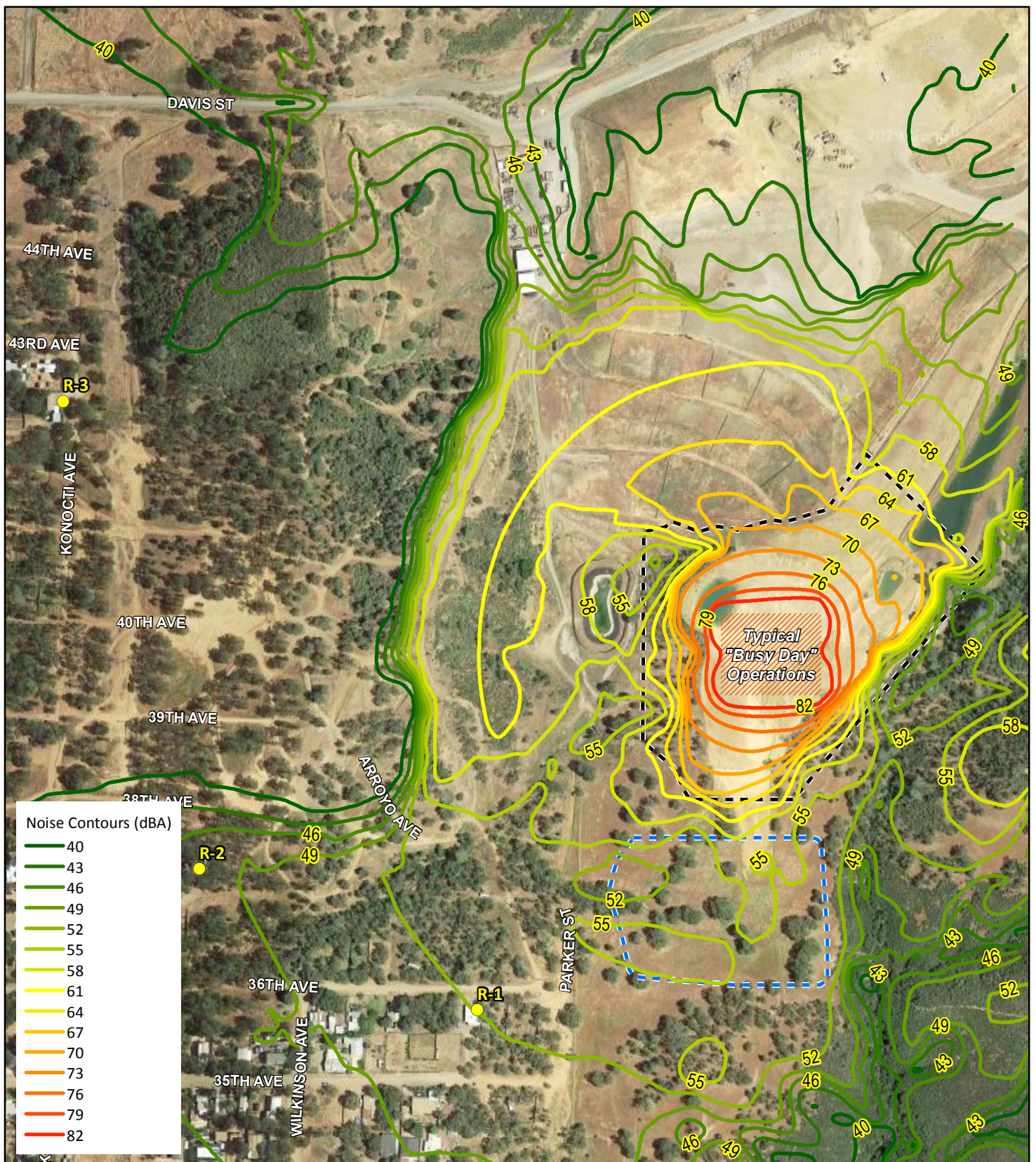


FIGURE 7

LSA

LEGEND

- Expansion Area - Phase 2
- Stormwater Basin
- Typical "Busy Day" Operations
- Receiver



0 175 350
FEET

SOURCE: Google (2018); SCS Engineers (8/2019)

I:\SCN1901\GIS\MXD\FuturePhaseOperationsNoiseImpacts.mxd (10/17/2019)

Eastlake Sanitary Landfill Expansion Project
Future Phase 2 Operations Noise Impacts

Noise Measurement Survey – 24 HR

Project Number: SCN1901

Project Name: Eastlake Landfill

Test Personnel: J.T. Stephens

Equipment: Larson Davis Spark 706RC

Site Number: LT-1 Date: 6/26-6/27/2019

Time: From 12:00 PM To 12:00 PM

Site Location: In the vicinity of the closest residence to the landfill located at the intersection of 36th Avenue and Parker Avenue.

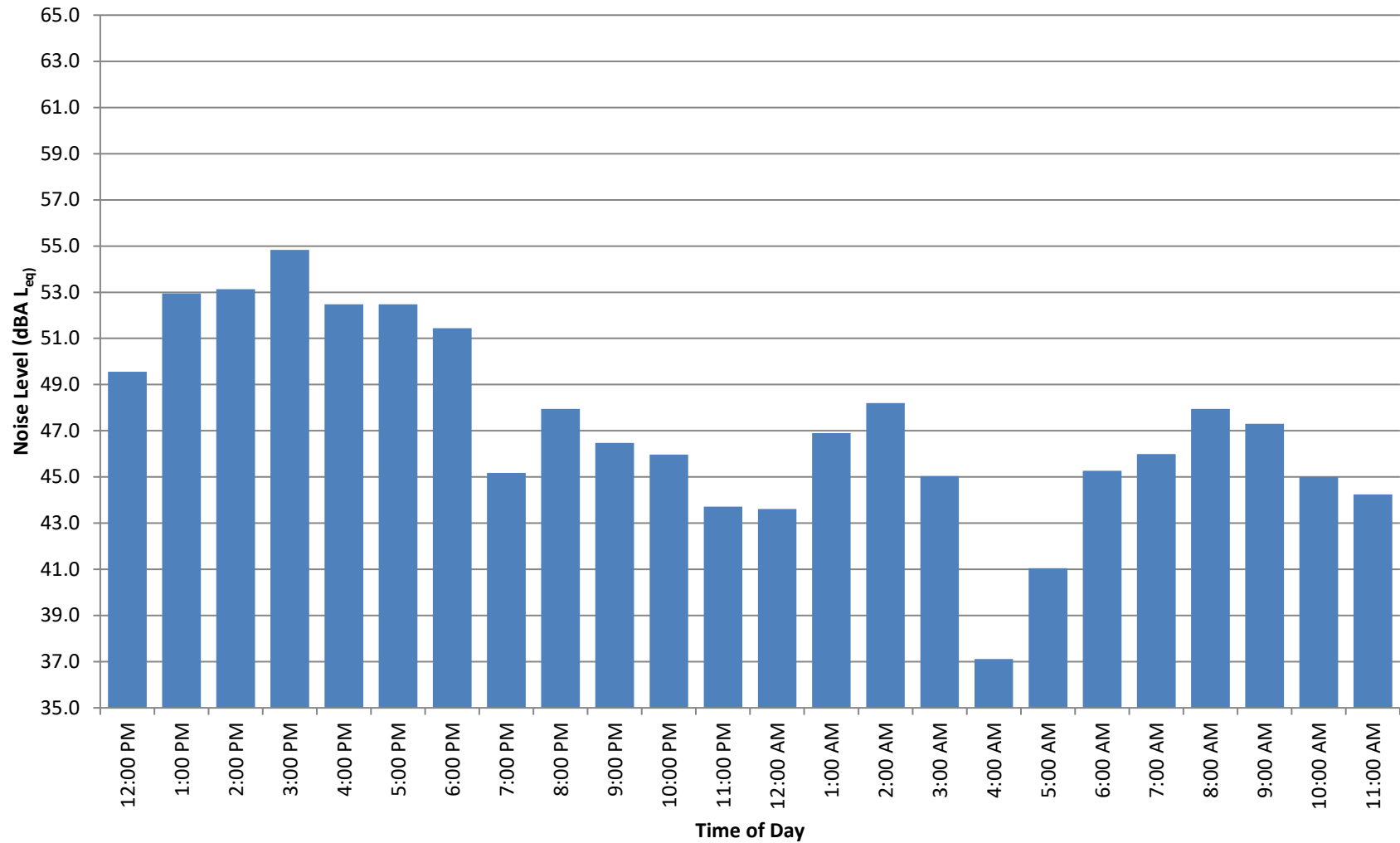
Primary Noise Sources: Traffic on surrounding roadways, landfill activities in the distance, birds.

Comments: Review of weather information shows potential high winds during afternoon hours.

Location Photo:



Long-Term 24-Hour Noise Monitoring Location: LT-1



Noise Measurement Survey – 24 HR

Project Number: SCN1901
Project Name: Eastlake Landfill

Test Personnel: J.T. Stephens
Equipment: Larson Davis Spark 706RC

Site Number: LT-2 Date: 6/26-6/27/2019

Time: From 12:00 PM To 12:00 PM

Site Location: In the vicinity of the closest residence west of the landfill located at the intersection of 42nd Avenue and Konocti Avenue.

Primary Noise Sources: Traffic on surrounding roadways, landfill activities in the distance, birds.

Comments: Review of weather information shows potential high winds during afternoon hours.

Location Photo:



Long-Term 24-Hour Noise Monitoring Location: LT-2

