

Lot Number	Estimated Impervious Area (SF)	Required Detention Volume (CF)
1	7,500	1,125
2	7,500	1,125
3	7,500	1,125
4	7,500	1,125
5	7,500	1,125
6	7,500	1,125
7	7,500	1,125
8	7,500	1,125
9	7,500	1,125
10	14,000	2,100
11	10,500	1,575
12	Existing Home Site	
13	Existing Home Site	
14	7,500	1,125
15	7,500	1,125
16	7,500	1,125
17	7,500	1,125
18	7,500	1,125
19	Existing Home Site	
Turkey Ct	48,000	7,200
Gibson Ct	30,500	4,575
SUMs	208,000	31,200
Detention Vol. Shown		32,500

LEGEND

- EXISTING CONTOURS
- DISTINCTIVE BORDER
- PROPOSED PROPERTY LINE
- ADJACENT PROPERTY LINE
- EXISTING FENCE LINE
- EXISTING BUILDING
- POTENTIAL BUILDING SITE
- POTENTIAL LEACHFIELD

ABBREVIATIONS

- ARV AIR RELEASE VALVE
- BO SLOW OF VALVE
- BFP BACKFLOW PREVENTER
- FH FIRE HYDRANT
- PM PARCEL MAP
- PRV PRESSURE RELEASE VALVE
- W WATER
- WM WATER METER
- WS WATER SERVICE
- WV WATER VALVE

NOTES

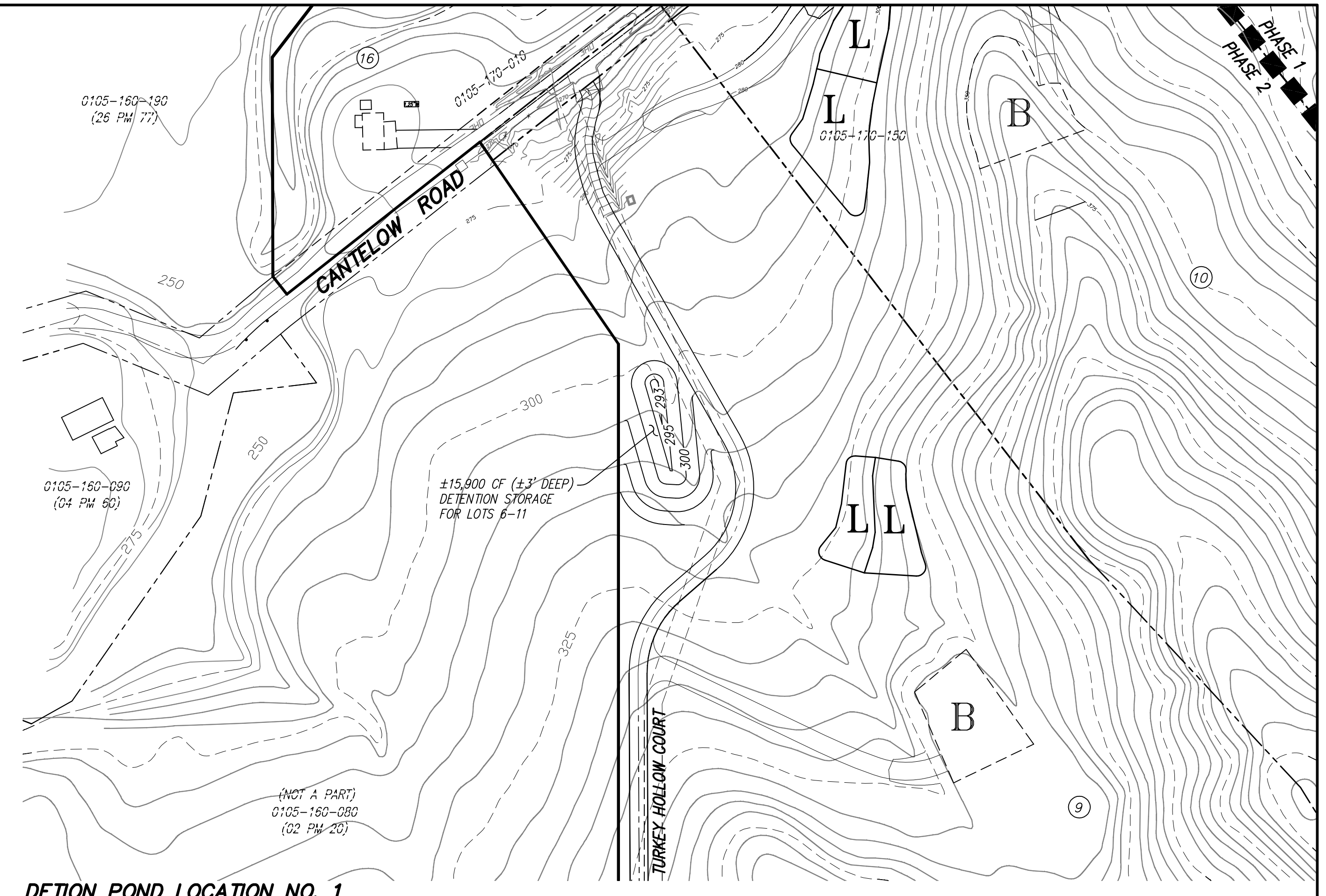
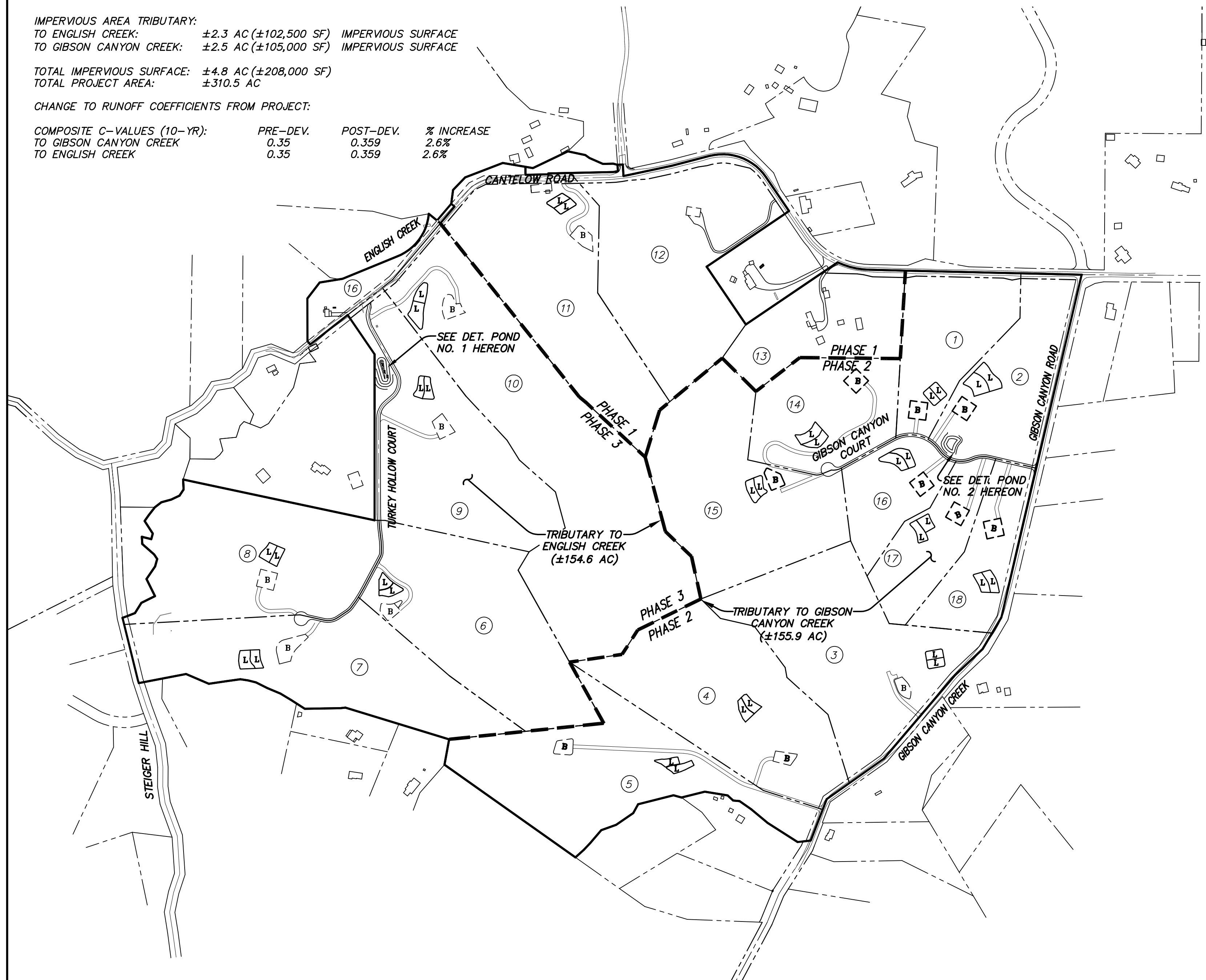
- IT IS INTENDED FOR THE TWO DETENTION PONDS SHOWN HEREON TO MITIGATE INCREASED RUNOFF FROM THE ENTIRE PROJECT AREA.
- DETENTION POND VOLUME CALCULATIONS HAVE BEEN ESTIMATED BASED ON THE SOLANO COUNTY "POLICY FOR MITIGATING INCREASED RUNOFF", DATED MARCH 11, 2011.
- MINIMUM IMPERVIOUS AREA OF 7,500 SQUARE FEET ASSUMED FOR EACH HOMESITE INCLUDING HOUSE, GARAGE, AND PATIOS. DRIVEWAYS HAVING SLOPES LESS THAN 12% ARE ASSUMED TO BE (PERVIOUS) GRAVEL.

IMPERVIOUS AREA TRIBUTARY:
 TO ENGLISH CREEK: ±2.3 AC (±102,500 SF) IMPERVIOUS SURFACE
 TO GIBSON CANYON CREEK: ±2.5 AC (±105,000 SF) IMPERVIOUS SURFACE

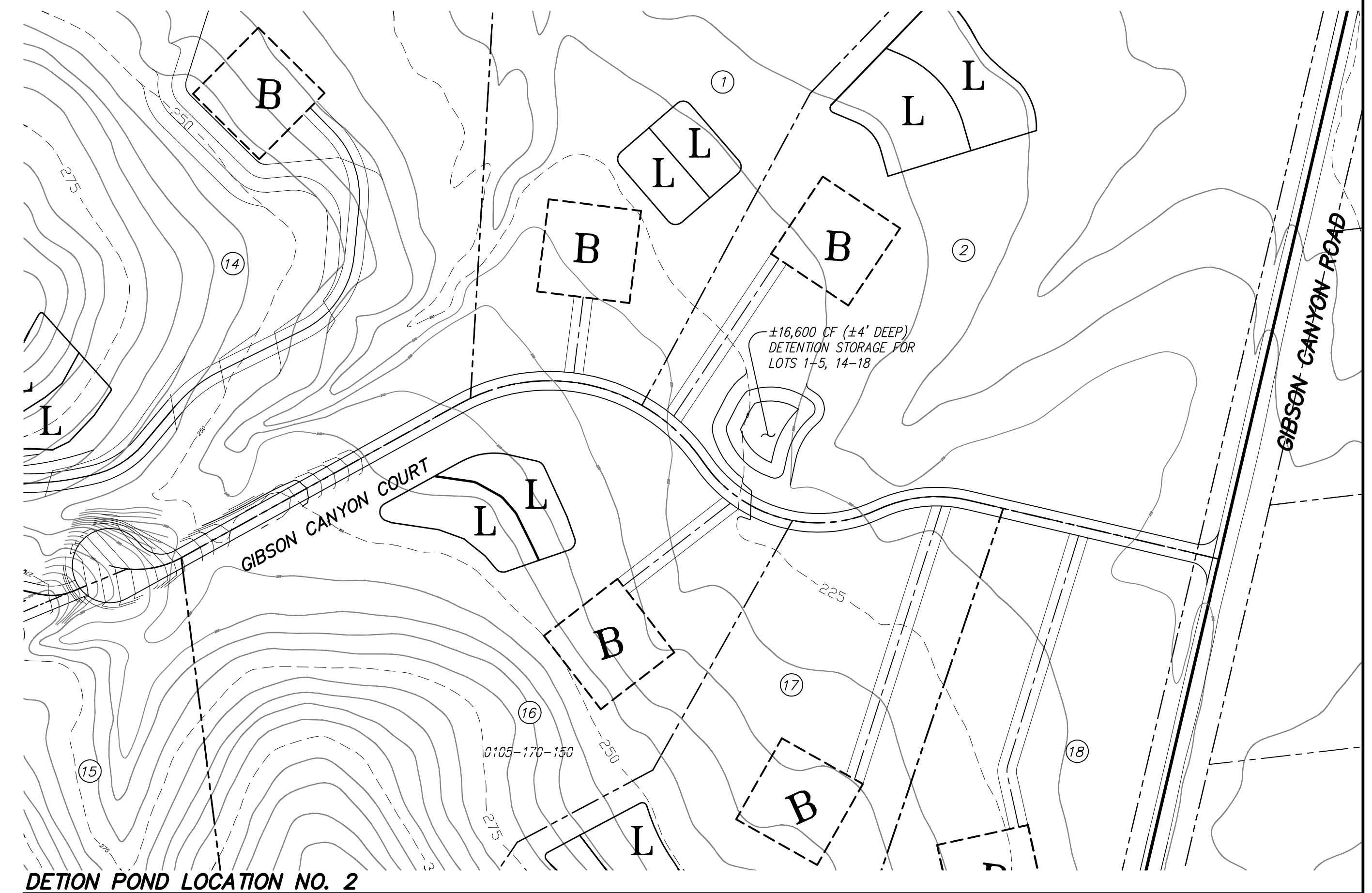
TOTAL IMPERVIOUS SURFACE: ±4.8 AC (±208,000 SF)
 TOTAL PROJECT AREA: ±310.5 AC

CHANGE TO RUNOFF COEFFICIENTS FROM PROJECT:

COMPOSITE C-VALUES (10-YR):	PRE-DEV.	POST-DEV.	% INCREASE
TO GIBSON CANYON CREEK	0.35	0.359	2.6%
TO ENGLISH CREEK	0.35	0.359	2.6%



DETENTION POND LOCATION NO. 1
 SCALE: 1"=100'



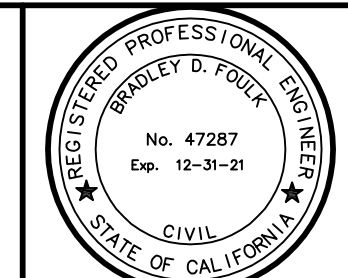
DETENTION POND LOCATION NO. 2
 SCALE: 1"=100'

DESIGNED BY: AJH
 DRAFTED BY: AJH/NRF
 CHECKED BY: BDF
 ISSUE DATE: 12/18/19

GRAPHIC SCALE

 (IN FEET)
 1 inch = 100 ft.

FCE FOULK CIVIL ENGINEERING, INC.
 Civil Engineering Land Surveying Planning
 4777 Mangels Boulevard, Fairfield, CA 94534
 (707)864-0784 fax (707)864-0793 e-mail: foulkce@gmail.com



REV.	DATE	DESCRIPTION	BY	APPROVED

PROJECT: **LANDS OF MORGAN
 SOLANO COUNTY (S-18-02)**

SHEET TITLE: **PRELIMINARY DETENTION POND PLAN**

SCALE: 1"=400' or 100' DWG: 07-045 JOB NO: 07-045 XREF: