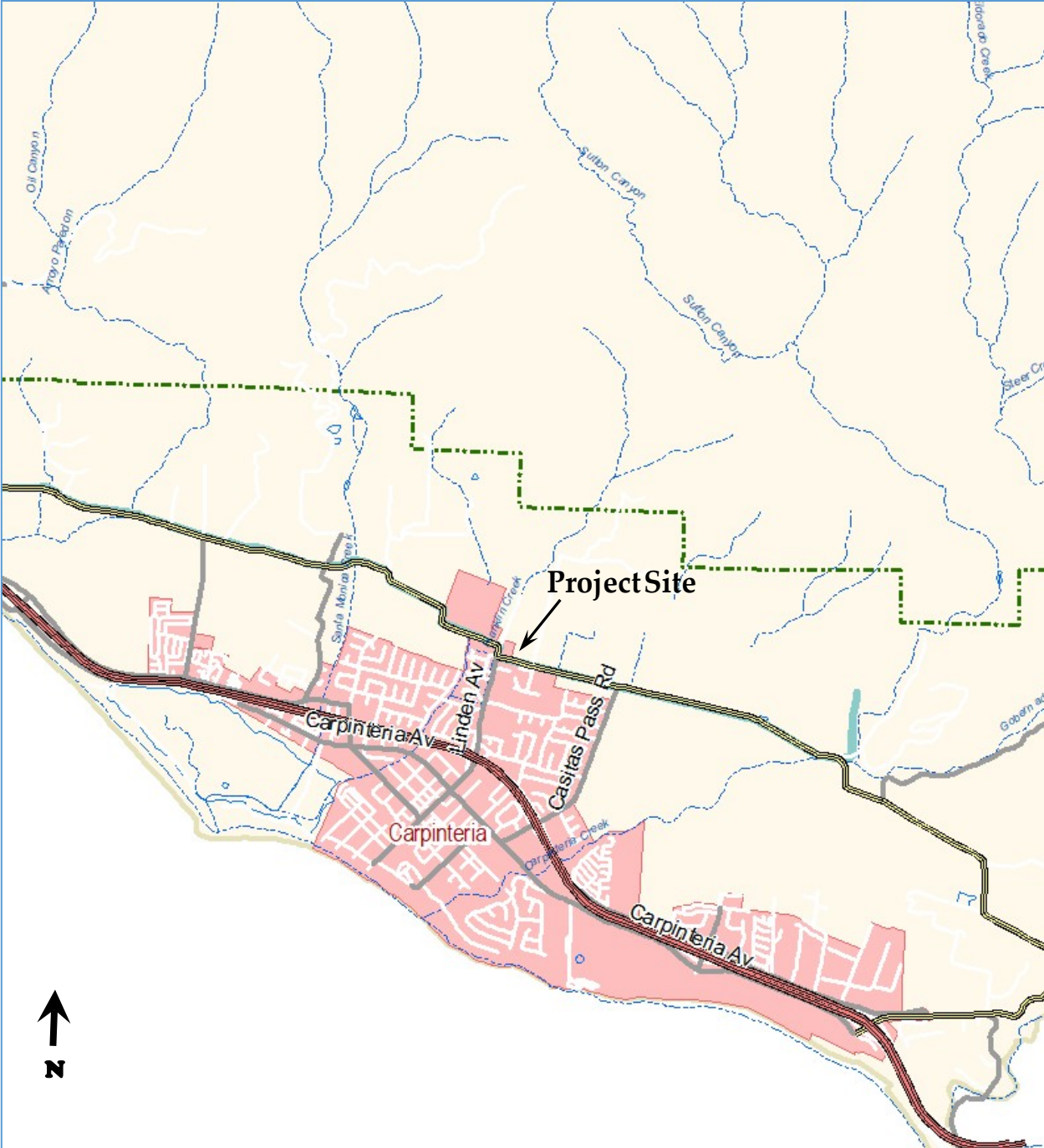


APPENDIX 1

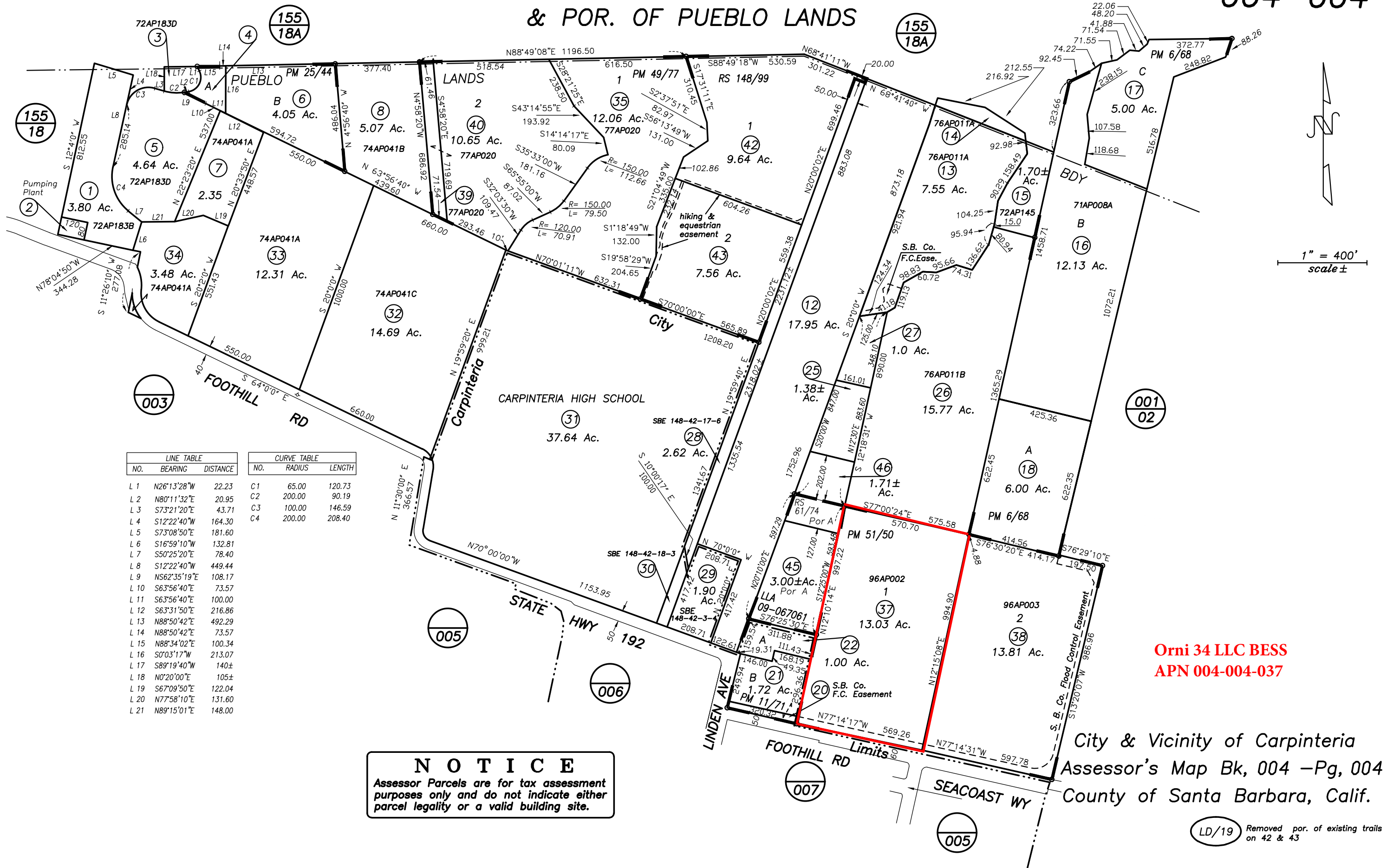
Project Vicinity and Assessor Parcel Map



Orni 34 LLC Local Grid Resiliency Project Vicinity

POR. SEC 21 T4N R25W SBB&M
& POR. OF PUEBLO LANDS

004-004



| LINE TABLE | | | CURVE TABLE | | |
|------------|--------------|----------|-------------|--------|--------|
| NO. | BEARING | DISTANCE | NO. | RADIUS | LENGTH |
| L 1 | N26°13'28"W | 22.23 | C 1 | 65.00 | 120.73 |
| L 2 | N80°11'32"E | 20.95 | C 2 | 200.00 | 90.19 |
| L 3 | S73°21'20"E | 43.71 | C 3 | 100.00 | 146.59 |
| L 4 | S12°22'40"W | 164.30 | C 4 | 200.00 | 208.40 |
| L 5 | S73°08'50"E | 181.60 | | | |
| L 6 | S16°59'10"W | 132.81 | | | |
| L 7 | S50°25'20"E | 78.40 | | | |
| L 8 | S12°22'40"W | 449.44 | | | |
| L 9 | NS62°35'19"E | 108.17 | | | |
| L 10 | S63°56'40"E | 73.57 | | | |
| L 11 | S63°56'40"E | 100.00 | | | |
| L 12 | S63°31'50"E | 216.86 | | | |
| L 13 | N88°50'42"E | 492.29 | | | |
| L 14 | N88°50'42"E | 73.57 | | | |
| L 15 | N88°34'02"E | 100.34 | | | |
| L 16 | S0°03'17"W | 213.07 | | | |
| L 17 | S89°19'40"W | 140± | | | |
| L 18 | N0°20'00"E | 105± | | | |
| L 19 | S67°09'50"E | 122.04 | | | |
| L 20 | N77°58'10"E | 131.60 | | | |
| L 21 | N89°15'01"E | 148.00 | | | |

NOTICE
Assessor Parcels are for tax assessment purposes only and do not indicate either parcel legality or a valid building site.

Orni 34 LLC BESS
APN 004-004-037

City & Vicinity of Carpinteria
Assessor's Map Bk, 004 -Pg, 004
County of Santa Barbara, Calif.

LD/19 Removed por. of existing trails on 42 & 43