

***San Jose Creek Bridge Replacement***  
***NES ADDENDUM***



**ADDENDUM to the Natural Environment Study**

State Route 101 in Santa Barbara County

San Jose Creek Bridges (#51-0163R/L)

District 5-SB-101 PM 21.6

Project Number 0516000073/ EA 05-1H430

***July 2019***




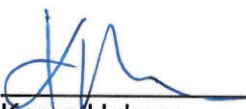
This page left intentionally blank.

# **ADDENDUM to the Natural Environment Study**

## ***San Jose Creek Bridge Replacement Project***

STATE OF CALIFORNIA  
Department of Transportation

Prepared By:  Date: 10/23/19  
Connor Ritchie  
Environmental Planner (Natural Sciences)  
805-549-3490  
District 5 - Central Coast Biology & Permitting Branch

Approved By:  Date: 10/23/19  
Karen Holmes  
Senior Environmental Planner  
805-542-4794  
District 5 - Central Coast Biology & Permitting Branch

For individuals with sensory disabilities, this document is available in Braille, large print, on audiocassette, or computer disk. To obtain a copy in one of these alternate formats, please use the District 5 California Relay Service TTY number 1 (805) 549-3259, or use California Relay Service 1 (800) 735-2929 (TTY), 1 (800) 735-2929 (Voice), or 711.

## Summary

The following has been updated within the project summary.

### IMPACTS

#### Impacts to Natural Communities, Jurisdictional Areas, and Critical Habitat

Community/Jurisdictional Area/Critical Habitat	Permanent Impacts	Temporary Impacts
<i>Quercus agrifolia</i> Woodland Alliance	--	0.210 ac
<i>Populus trichocarpa</i> Forest Alliance	--	0.106 ac
<i>Salix lasiolepis</i> Shrubland Alliance	--	0.027 ac
<i>Platanus racemosa</i> Woodland Alliance	0.003 ac	0.173 ac
<i>Salix exigua</i> Shrubland Alliance	--	0.024 ac
Ornamental Vegetation	--	0.785 ac
<i>Eucalyptus</i> Woodland Semi-Natural Alliance	--	0.154 ac
<i>Arundo donax</i> Semi-Natural Alliance	0.265 ac	--
Ruderal / Disturbed Areas	0.631 ac	--
USACE CWA Other Waters <sup>1</sup>	--	0.182 ac
RWQCB Jurisdiction <sup>2</sup>	0.042 ac	0.742 ac
CDFW Jurisdiction <sup>2</sup>	0.042 ac	0.742 ac
Steelhead Critical Habitat <sup>3</sup>	--	0.159 ac
<sup>1</sup> USACE CWA Other Waters are located at or below an OHWM and lack one or more of the three wetland parameters (i.e., hydrophytic vegetation, hydric soils, and/or wetland hydrology). This includes an intermittent stream (San Jose Creek) and a concrete-lined perennial drainage ditch. <sup>2</sup> Includes areas of USACE jurisdiction (CWA Other Waters) and areas that extend from the OHWM to the tops of banks or outer edge of native riparian and non-native streambank canopy (whichever is greater). <sup>3</sup> Includes federally designated critical habitat for the southern California steelhead DPS. Steelhead critical habitat was quantified for San Jose Creek up to the OHWM.		

## Chapter 1 – Introduction

The purpose of this addendum to the Natural Environment Study (NES) is to provide technical information on recent changes that have occurred with the San Jose Creek Bridge Replacement Project (Caltrans EA 05-1H430) since the original NES was approved in April 2019. This addendum provides supplemental and updated information on these changes. The original NES for the project remains valid, except for where noted by the changes presented in this addendum.

## Chapter 2 – Study Methods

### Studies Required

The following information has been updated.

An online request for an official species list from the Ventura USFWS Office was made on April 19, 2018, via the Information, Planning and Conservation System (IPaC) website (IPaC 2018) and was most recently updated on August 2, 2019. The most recent official USFWS list is included as Appendix C.

A request for an official species list from NMFS was made on April 19, 2018 and most recently on August 2, 2019 using the California Species List Tool – Google KMZ of NMFS Resources in California (National Oceanic and Atmospheric Administration [NOAA] 2018). The most recent official NMFS list is included as Appendix C.

### Agency Coordination and Professional Contacts

**August 2, 2019:** Mr. Ritchie updated the official USFWS species list through the USFWS IPaC website for the proposed project. IPaC generated a list the same day.

**August 2, 2019:** Mr. Ritchie updated the official NMFS species list from the NOAA California Species List Tool for the project area.

## **Chapter 3 – Results: Environmental Setting**

### **Description of the Existing Biological and Physical Conditions**

#### **BIOLOGICAL STUDY AREA**

The following Biological Study Area information has been updated to reflect changes in Permanent Impacts.



Figure 4. Updated Biological Study Area

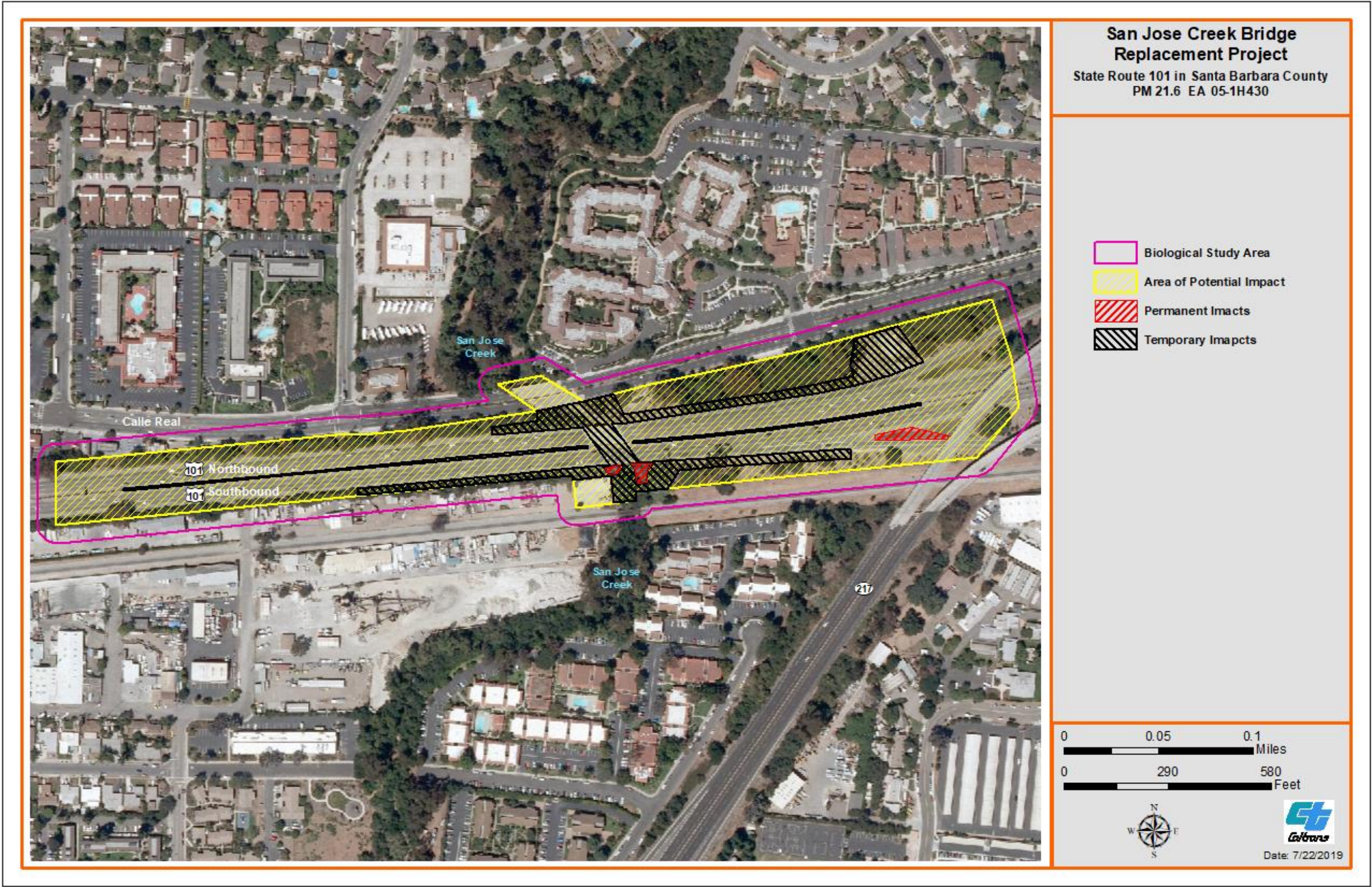
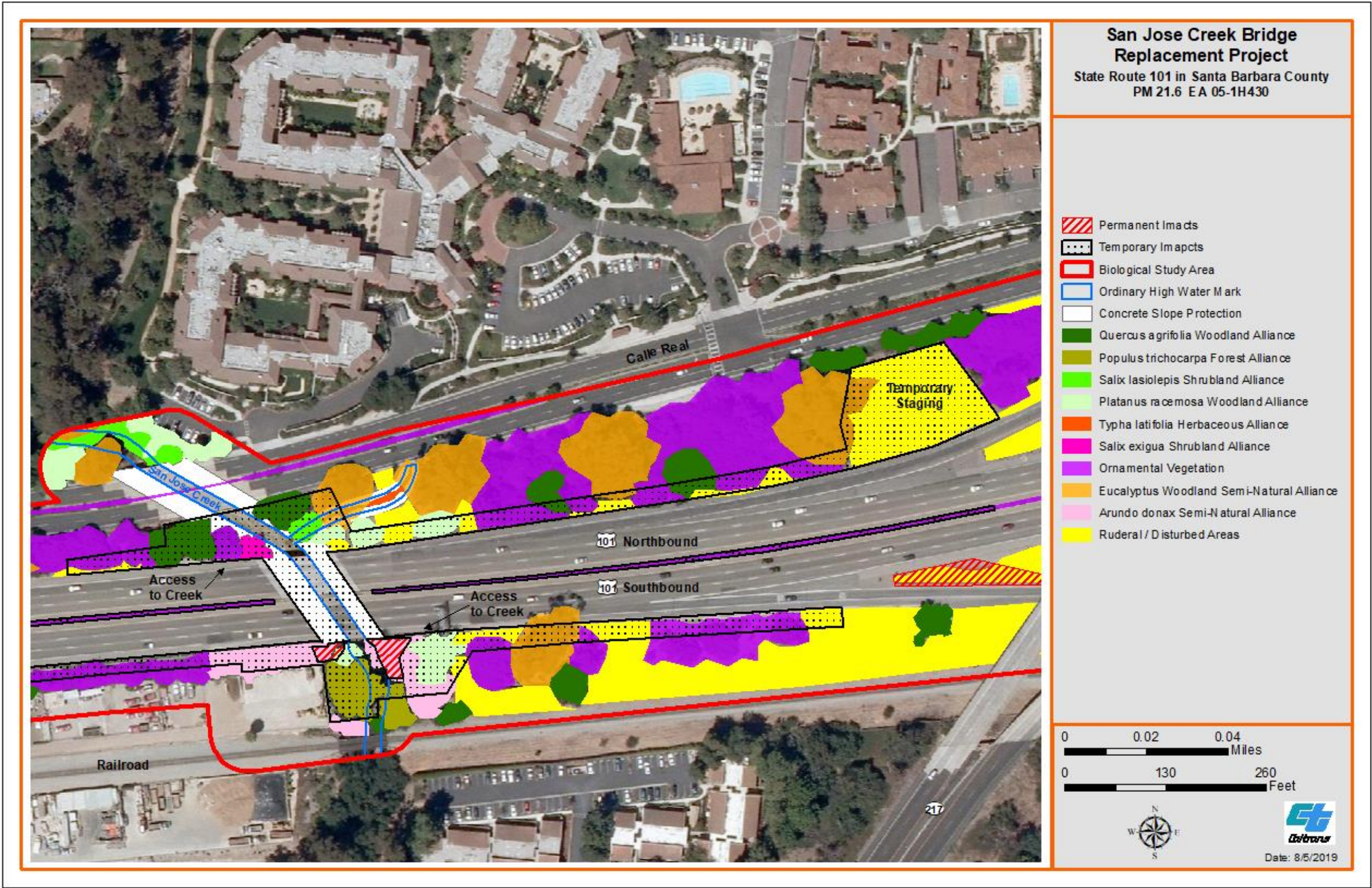




Figure 5. Updated Habitat Impacts Map





This page intentionally left blank.

## Chapter 4 – Results: Biological Resources, Discussion of Impacts and Mitigation

### Discussion of Jurisdictional Wetlands, Other Waters, and Riparian Habitat

The following Discussion of Jurisdictional Wetlands, Other Waters, and Riparian Habitat information has been updated.

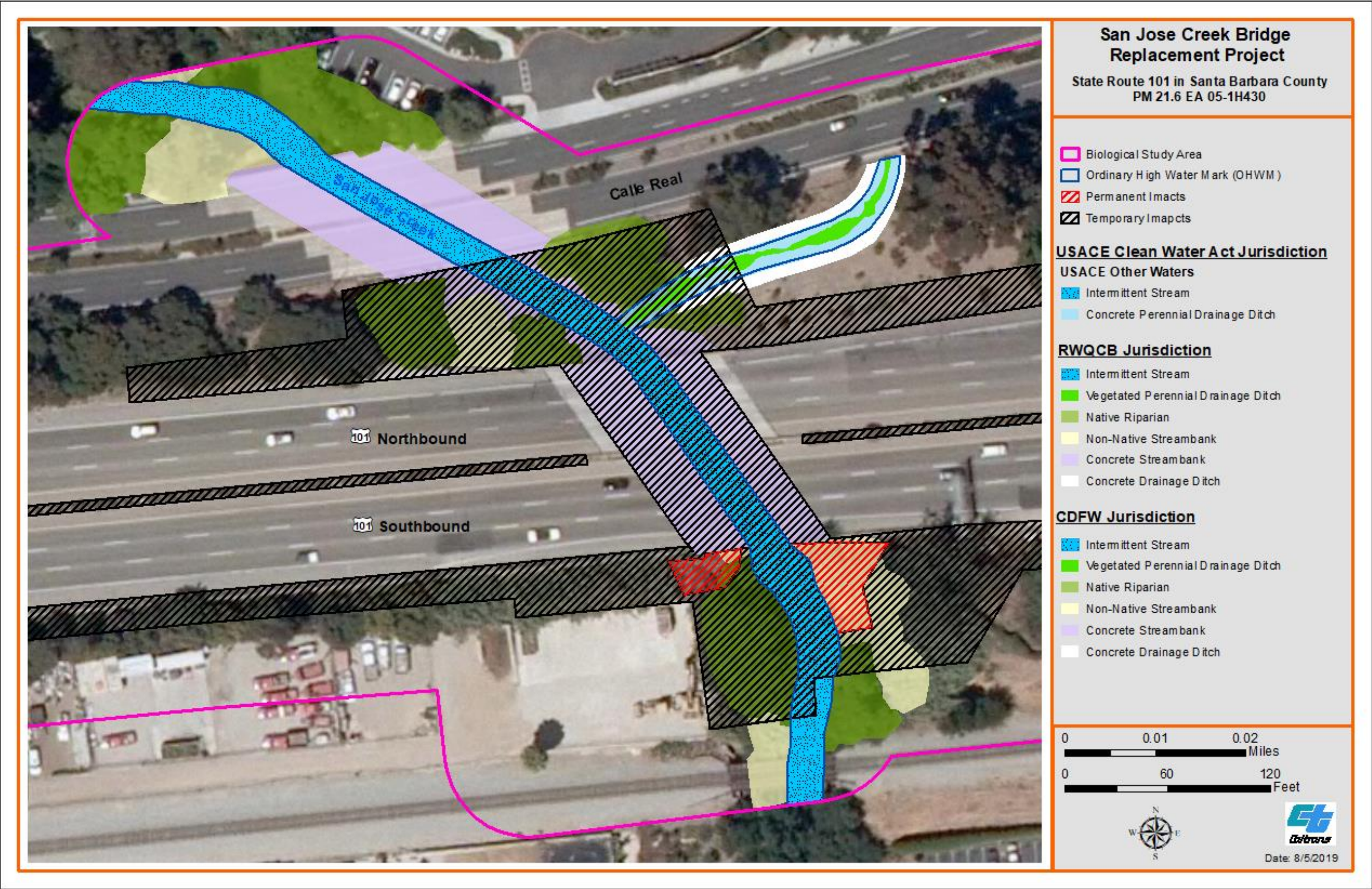
The following impacts to Natural Communities, Jurisdictional Areas, and Critical Habitat Table has been updated to reflect additional impacts associated with the expansion of previously designated rock slope protection. There will be an increase in impacts of 0.003 acre *Platanus racemosa* Woodland Alliance, 0.029 acre RWQCB Jurisdiction, and 0.029 acre CDFW Jurisdiction.

**Table 1. Impacts to Natural Communities, Jurisdictional Areas, and Critical Habitat**

Community/Jurisdictional Area/Critical Habitat	Permanent Impacts	Temporary Impacts
<i>Quercus agrifolia</i> Woodland Alliance	--	0.210 ac
<i>Populus trichocarpa</i> Forest Alliance	--	0.106 ac
<i>Salix lasiolepis</i> Shrubland Alliance	--	0.027 ac
<i>Platanus racemosa</i> Woodland Alliance	0.003 ac	0.173 ac
<i>Salix exigua</i> Shrubland Alliance	--	0.024 ac
Ornamental Vegetation	--	0.785 ac
<i>Eucalyptus</i> Woodland Semi-Natural Alliance	--	0.154 ac
<i>Arundo donax</i> Semi-Natural Alliance	0.265 ac	--
Ruderal / Disturbed Areas	0.631 ac	--
USACE CWA Other Waters <sup>1</sup>	--	0.182 ac
RWQCB Jurisdiction <sup>2</sup>	0.042 ac	0.742 ac
CDFW Jurisdiction <sup>2</sup>	0.042 ac	0.742 ac
Steelhead Critical Habitat <sup>3</sup>	--	0.159 ac
<sup>1</sup> USACE CWA Other Waters are located at or below an OHWM and lack one or more of the three wetland parameters (i.e., hydrophytic vegetation, hydric soils, and/or wetland hydrology). This includes an intermittent stream (San Jose Creek) and a concrete-lined perennial drainage ditch. <sup>2</sup> Includes areas of USACE jurisdiction (CWA Other Waters) and areas that extend from the OHWM to the tops of banks or outer edge of native riparian and non-native streambank canopy (whichever is greater). <sup>3</sup> Includes federally designated critical habitat for the southern California steelhead DPS. Steelhead critical habitat was quantified for San Jose Creek up to the OHWM.		



Figure 6. Updated Jurisdictional Impacts Map





This page intentionally left blank.

## **Compensatory Mitigation**

Onsite compensatory mitigation is proposed at a 1:1 ratio (acreage) for temporary impacts. Permanent impacts would occur only in areas with giant reed (an invasive species), ruderal/disturbed areas containing mostly exotic and invasive species, and a very small area of *Platanus racemosa* Woodland Alliance. Measures are included to remove giant reed throughout the project limits and to replace it with native riparian vegetation. A small amount of ruderal/disturbed vegetation would be paved over at the gore tip of the SB off-ramp to Patterson Road. While no compensatory mitigation is likely to be required for the loss of this exotic and invasive vegetation, replacement with native plantings at a 1:1 ratio is proposed for these permanent impacts. Impacts to riparian trees are likely to require a 3:1 (number of trees) by CDFW. Mitigation would be achieved through restoration (re-establishment).

## **Chapter 5 – Conclusions and Regulatory Determinations**

### **Federal Endangered Species Act Consultation Summary**

The following consultation summary has been updated.

The following briefly summarizes the FESA Section 7 consultation previously described in the "Agency Coordination and Professional Contacts" section in Chapter 2.

Caltrans submitted a request online through the USFWS IPaC website (IPaC 2018) on April 19, 2018 for an official USFWS species list for the project area. The USFWS list was most recently updated on August 2, 2019. The newest official USFWS species list is included (Appendix C).

On April 19, 2018 Caltrans generated a NMFS species list using the California Species List Tool (NOAA 2018) for the project area and updated the official NMFS species list on November 11, 2018, February 27, 2019, and August 2, 2019 (refer to Appendix C).







## **Appendix C – USFWS and NMFS Species Lists**