

**Atwater Elementary School District
REQUEST FOR PRELIMINARY COMMENT
Juniper Elementary School Project**

To:

Responsible, Trustee and Interested Agencies
Interested Persons

From:

Atwater Elementary School District
Aaron Delworth – Director Business Services
1401 Broadway Avenue
Atwater, CA 95301
Telephone: (209) 357-6100
Email: ADelworth@aesd.edu

Date: December 18, 2019

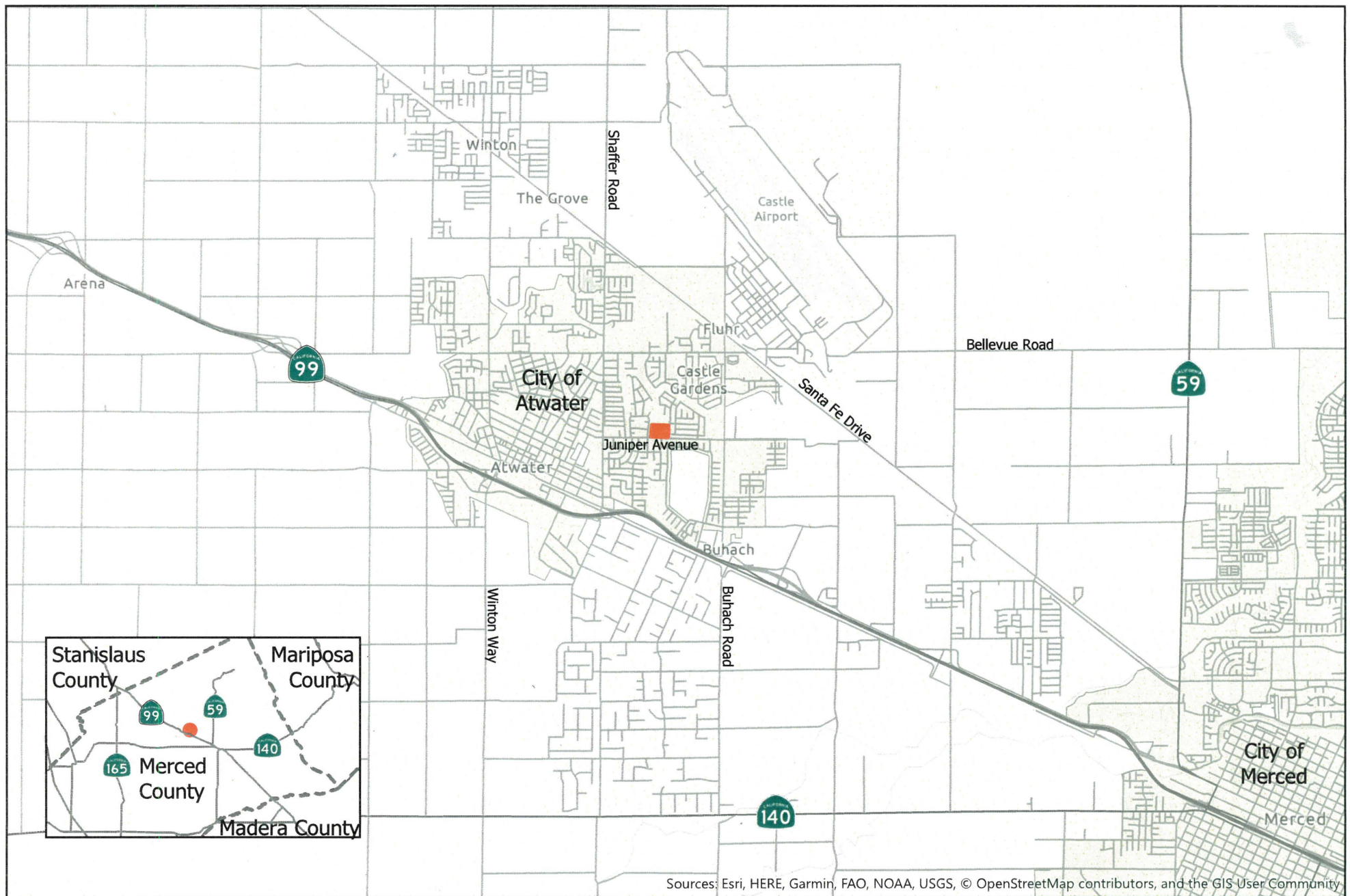
Purpose: The Atwater Elementary School District (District) is proposing to undertake the Juniper Elementary School Project (project). The purpose of this Request for Preliminary Comment is to invite responsible, trustee and interested agencies, as well as interested persons, to submit written comments on any concerns they may have on the environmental effects of the project. The District will consider the comments in preparing a California Environmental Quality Act Initial Study for the project and in determining whether to prepare an Environmental Impact Report for the project or to adopt a Negative Declaration or Mitigated Negative Declaration. You will have the opportunity to comment again after you have reviewed the completed environmental documents.

Comments: Please send any comments in response to this Request for Preliminary Comment to Aaron Delworth at the contact information shown above. **The deadline for submission of comments is Wednesday, January 8, 2019.**

Project Location and Description: The proposed project includes the construction and operation of a new elementary school on a 10-acre site owned by the District. The site is located at the northwest corner of Juniper Avenue and Bridgewater Street in the city of Atwater, Merced County, CA. Figures 1 and 2 depict the Project Location and Project Site.

The elementary school would serve up to 600 students in grades TK-6. The campus would have 27 classrooms, administrative offices, a multi-purpose building, hardcourt areas and athletic fields which may include lighting. The school would be staffed by up to 45 employees, including administrators, faculty, and support staff. The school would be in regular session on weekdays from late August to early June, but may host special events and classes during evenings, on weekends, and during summer recess.

The District estimates that construction of the project would begin in late 2021, with operation of the proposed elementary school beginning in August 2023.



Project Location

Juniper Elementary School Project
Atwater Elementary School District

ODELL Planning & Research, Inc.
Environmental Planning • School Facility Planning • Demographics

Project Site
 City Limits

0 0.5 1 2 Miles
N

Figure 1



Project Site

Juniper Elementary School Project
Atwater Elementary School District

ODELL Planning & Research, Inc.
Environmental Planning • School Facility Planning • Demographics

0 125 250 500
Feet



Figure 2