

EXHIBIT "A"
LEGAL DESCRIPTION

BEING A PORTION OF TRACT 135, TOWNSHIP 15 SOUTH, RANGE 13/14 EAST, S.B.M., IN AN UNINCORPORATED AREA OF THE CITY OF IMPERIAL, COUNTY OF IMPERIAL, STATE OF CALIFORNIA, ACCORDING TO THE OFFICIAL PLAT THEREOF, DESCRIBED AS FOLLOWS:

BEGINNING AT THE NORTHEAST CORNER OF SAID TRACT 135;

THENCE S. 89°33'37" W., A DISTANCE OF 917.17 FEET ALONG THE NORTH LINE OF SAID TRACT 135 TO A POINT;

THENCE LEAVING SAID NORTH LINE, S. 00°26'20" E., A DISTANCE OF 42.00 FEET TO THE TRUE POINT OF BEGINNING;

THENCE CONTINUING S. 00°26'20" E., A DISTANCE OF 439.87 FEET TO A POINT;

THENCE S. 44°33'40" W., A DISTANCE OF 14.14 FEET TO A POINT;

THENCE S. 89°33'40" W., A DISTANCE OF 1495.00 FEET TO A POINT;

THENCE S. 00°26'20" E., A DISTANCE OF 3.71 FEET TO A POINT;

THENCE S. 89°33'40" W., A DISTANCE OF 123.37 FEET TO A POINT;

THENCE N. 00°04'24" W., A DISTANCE OF 483.57 FEET TO A POINT;

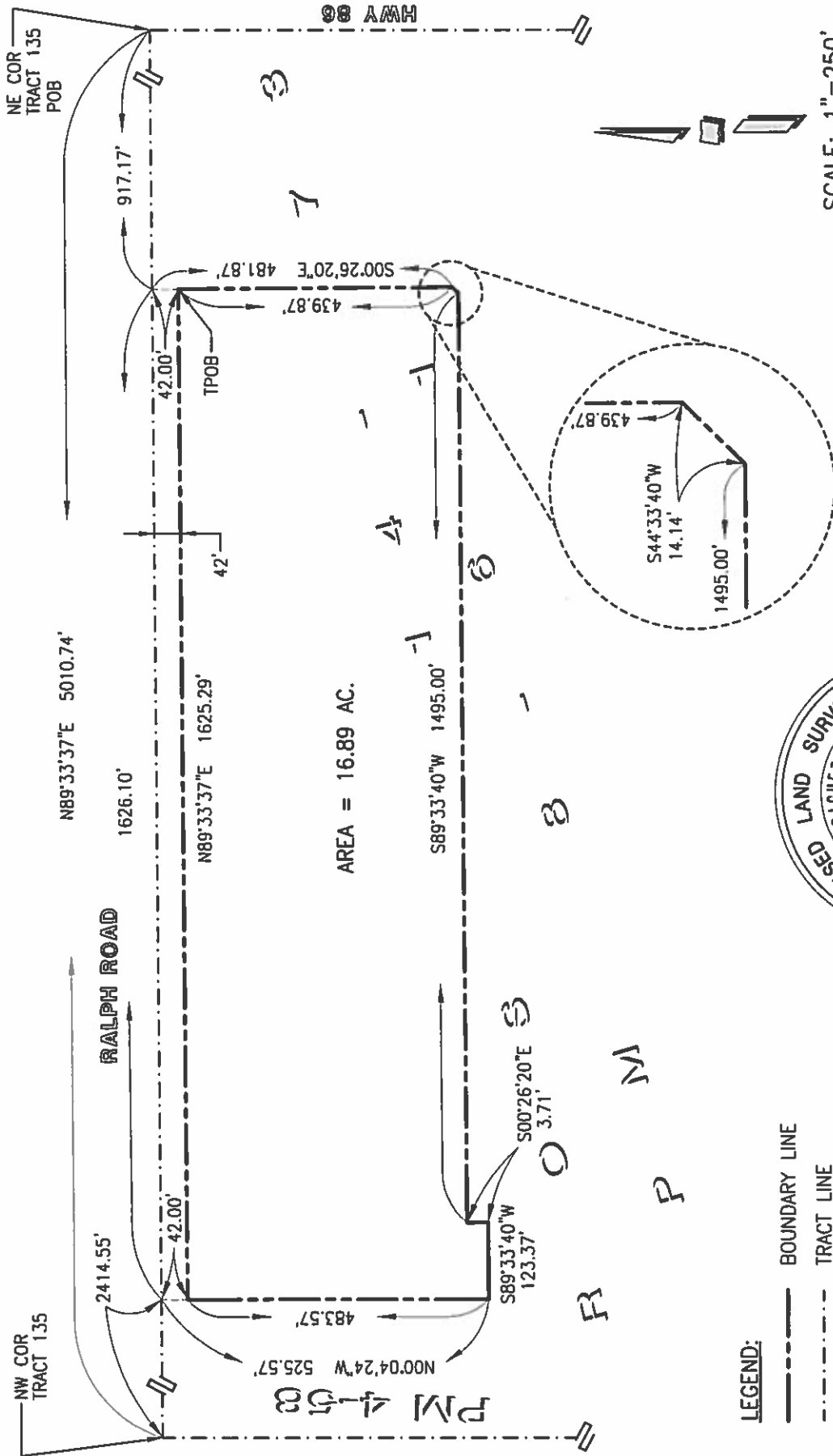
THENCE N. 89°33'37" E., A DISTANCE OF 1625.29 FEET TO THE TRUE POINT OF BEGINNING.

THE ABOVE DESCRIBED AREA CONTAINS 16.89 ACRES MORE OR LESS

AS SHOWN ON EXHIBIT "B" ATTACHED HERETO AND BY THIS REFERENCE MADE A PART HEREOF.



EXHIBIT "B"



AREA = 16.89 AC.

SCALE: 1" = 250'



- LEGEND:**
- BOUNDARY LINE
 - - - - TRACT LINE
 - POB POINT OF BEGINNING
 - TPOB TRUE POINT OF BEGINNING

NOTE:
BEARINGS AND DISTANCES
PER ROS FM 14-73