
APPENDIX C4

INFORMATIONAL MEETING

POWERPOINT PRESENTATION

Kings Area Rural Transit (KART) Project

OPEN HOUSE | Public Informational Meeting – July 31, 2018 | 5PM – 7PM



**Kings County Area Public Transit Agency
(KCAPTA)**



**Federal Transit
Administration**

Meeting Agenda

- Introductions
- Project Purpose
- Project Background & Description
- Next Steps



Who Are We

Kings County Area Public Transit Agency (KCAPTA):

- Lead Agency under CEQA

U.S. Department of Transportation, Federal Transit Administration (FTA):

- Lead Agency under NEPA

UltraSystems Environmental:

- Environmental Consultant for KCAPTA

Purpose of Today's Public Information Meeting

- To inform the public and Responsible Agencies about the Proposed KART Project
- To inform the public about the Environmental Process for the Proposed KART Project

Background – Existing Transit Site



EXISTING TRANSIT SITE

- 1.1 Acres
- 504 West 7th Street, Hanford
- Currently supports 2,000 daily riders or roughly 60,000 riders per month
- 10 Bus Bays and one Street-side bus Shelter
- Existing site has limited space for improvements, including improvements to transit service efficiency, enhancing access to social service or encouraging economic development

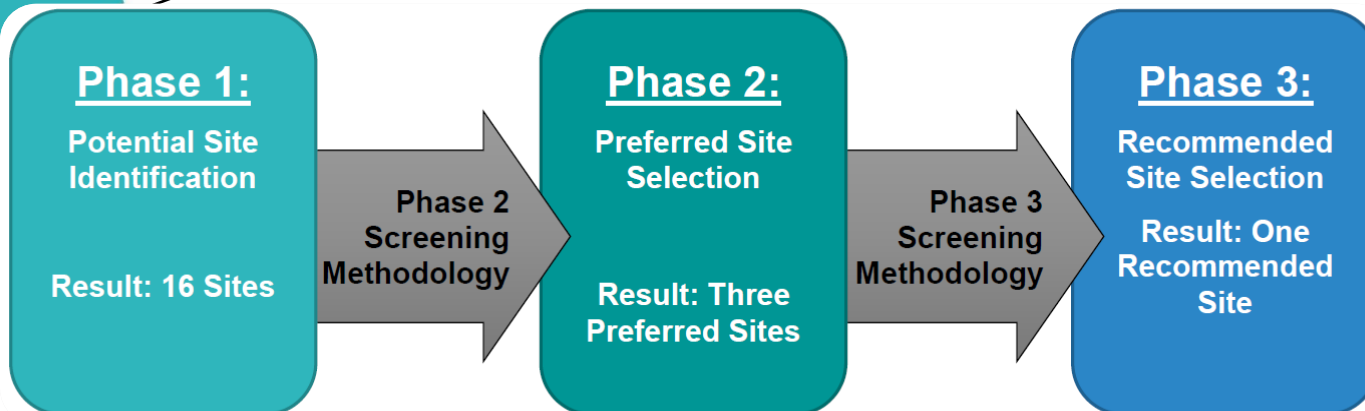
KART Transit Station Site Selection Study



KCAPTA commissioned a Site Selection Study that was prepared in 2018.

Selection Criteria:

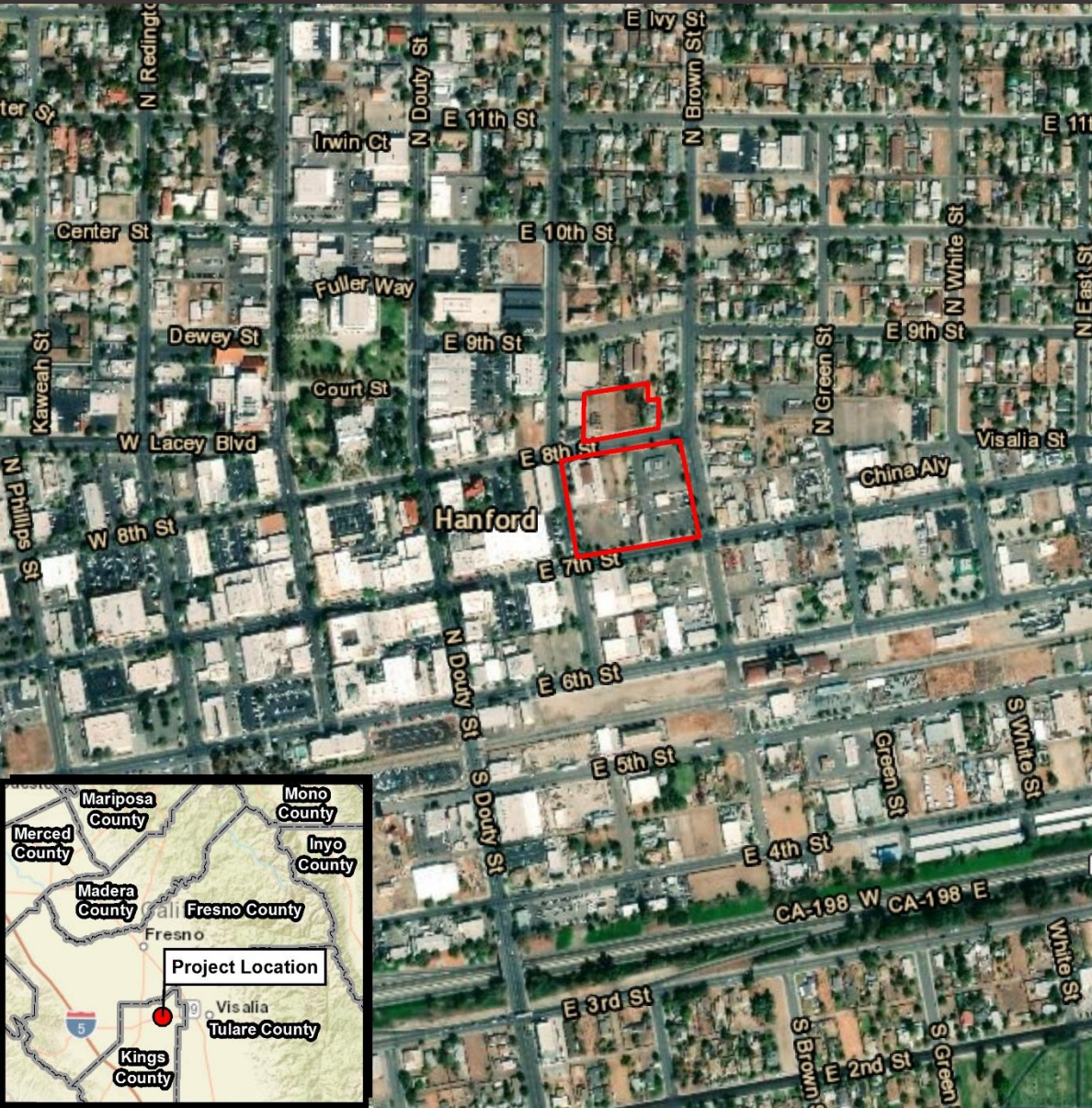
1. Identified Potential Sites in Hanford to relocate the existing transit station;
2. Narrow the search to three (3) Preferred Site Alternatives;
3. Equally evaluate all three sites; and
4. Recommended one site for consideration.



Planned Project – Location Map



Planned Project – Location Map



PLANNED FEATURES

- 4-acre site | 19,000 sq. ft. Transit Building, consisting of 3 floors
- Off-site parking
- On-site bus parking
- First Floor – 6,900 sq. ft.
 - ❖ KART Bus Operators
 - ❖ Training Room
 - ❖ Large Main Waiting Area
 - ❖ Information Kiosk
 - ❖ Meeting Space with movable wall.
- Second Floor – 5,516 sq. ft.
 - ❖ KART and KCAPTA Offices
- Third Floor – 6,557 sq. ft.
 - ❖ Leasable tenant space
- 21 sawtooth bus bays
- 17 staff parking spaces
- 8 secure staff parking spaces

Environmental Process

- Provide full disclosure of significant effects and means to reduce, avoid, and minimize those effects
- Provide opportunity for public involvement in the planning and decision-making process
- Ensure that decision makers have a solid basis to make a decision

What Will Be in the Initial Study

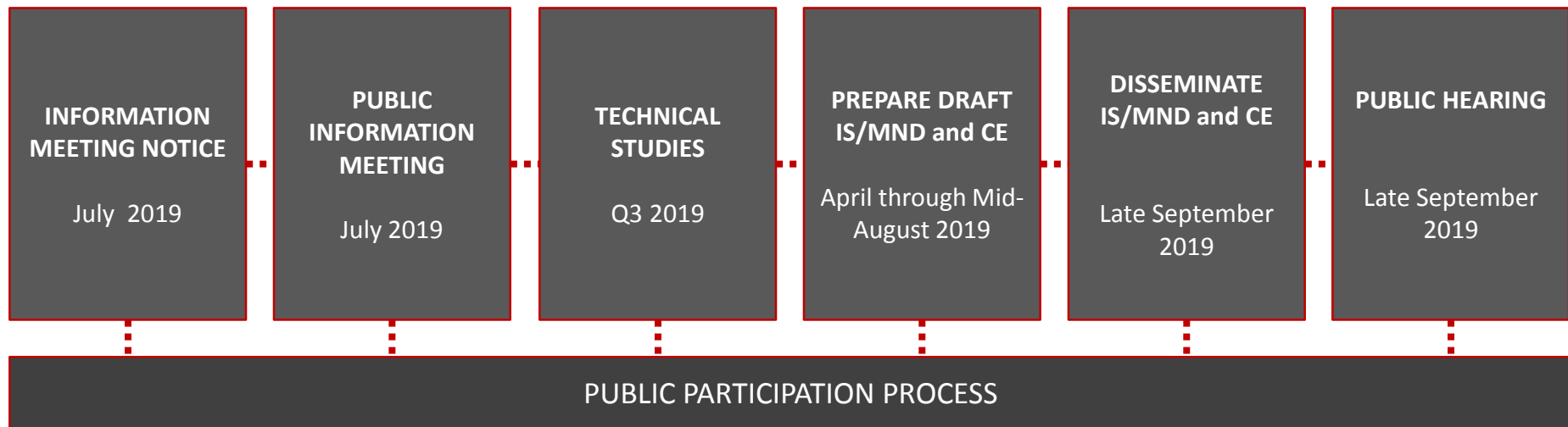
- An Introduction to the Project
- Environmental Setting
- Description of the Project
- Environmental Checklist
- Analysis of potential environmental impacts
- Mitigation monitoring and reporting program

Analysis of Environmental Impacts

The following environmental topics will be analyzed in the IS/MND, CE

- Aesthetic Resources
- Air Quality and Greenhouse Gases
- Cultural and Paleontological Resources
- Energy
- Geology and Soils
- Noise
- Public Services
- Socioeconomic Issues
- Cumulative Impacts
- Biological Resources
- Environmental Justice
- Hazards and Hazardous Materials
- Land Use and Planning
- Public Health and Safety
- Population and Housing
- Recreation
- Transportation and Traffic
- Tribal and Cultural Resources
- Wildfire

Environmental Planning Process Timeline



Public Information Comments

How to comment during the Environmental Process:

- ❖ Verbally, at tonight's Open House Information Meeting
- ❖ Hand in written comments tonight
- ❖ Submit comments via mail or email by 4:00 p.m. on August 14, 2019 to the following:

Angie Dow, Executive Director

angie.dow@co.kings.ca.us

Kings County Area Public Transit Agency

610 W 7th Street

Hanford, CA 93230

Phone: (559) 852-2717 | Fax: (559) 582-5003

Stay Informed With KCAPTA



Angie Dow, Executive Director

angie.dow@co.kings.ca.us



(559) 852-2717



<https://www.kartbus.org/>