



# FREMONT UNIFIED SCHOOL DISTRICT

4210 Technology Drive  
P.O. Box 5008  
Fremont, CA 94538  
(510) 657-2350  
www.fremont.k12.ca.us

Governor's Office of Planning & Research

**NOV 25 2019**

## NOTICE OF PREPARATION STATE CLEARINGHOUSE

### DRAFT ENVIRONMENTAL IMPACT REPORT

**To:** State Clearinghouse  
Governor's Office of Planning and  
Research  
Alameda County Clerk  
Responsible Agencies  
Interested Individuals and Organizations

**From:** John Chwastyk  
Director of Facilities  
Fremont Unified School District  
4210 Technology Drive  
Fremont, CA 94538  
jchwastyk@fusdk12.net

The Fremont Unified School District (District) will be the Lead Agency and will prepare an Environmental Impact Report (EIR) for the Williamson Elementary School Project (proposed project). The School District is requesting written comments from responsible agencies regarding the scope and content of the environmental document. The public is also invited to submit written comments regarding the scope of the EIR and issues that should be addressed as the document is prepared.

A Scoping Meeting will be held on Thursday, December 12th from 6:00 PM to 8:00 PM at the Washington High School Cafeteria, located at 38442 Fremont Blvd in the City of Fremont.

Alternately, the District is accepting written responses within the California Environmental Quality Act (CEQA)-mandated 30-day comment period that ends **no later than 5:00 p.m. on December 25<sup>th</sup>, 2019**. Public agencies should indicate a contact person in their response to this Notice of Preparation.

Responses should be directed to: John Chwastyk, Director of Facilities, Fremont Unified School District, 4210 Technology Drive, Fremont, California, 94538; jchwastyk@fusdk12.net.

**Project Location:** The proposed project is located in Fremont, California, within the County of Alameda. The project site is situated northeast of Washington High School and southeast of Centerville Community Park. The property address is 3350 Eggers Drive and consists of one approximately 9.86-acre parcel at the southeast corner of the intersection of Eggers Drive and Hastings Street (Assessor Parcel Number [APN] 501-1600-7-4). Williamson Elementary School will be a part of the Fremont Unified School District. The regional location is shown on Attachment A. The project site is designated Commercial-City Center (C-C) in the Fremont General Plan and is zoned Open Space. It is surrounded primarily by commercial and residential land uses, per the City's General Plan.

**Project Description:** The proposed Williamson Elementary School project that is the subject of the EIR includes the construction of a new elementary school campus with classrooms and associated facilities and would be designed to accommodate 750 students from Kindergarten to fifth grade.

The total project square footage consists of 78,331 square feet covering four structural components; buildings A, B, C, and D. Building A consists of 11,636 square feet and includes a kindergarten and administration building; building B consists of 12,924 square feet and serves as a multi-use building with various functions; building C consists of 38,237 square feet over two floors and includes classrooms and a learning center; and building D consists of 15,534 square feet over two floors and includes classrooms and a media center. The proposed school also includes outdoor facilities for students which include

---

Board of Education  
**Michele Berke, Ph.D.**  
**Desrie Campbell**  
**Larry Sweeney**  
**Ann Crosbie**  
**Dianne Jones**

Superintendent  
**Kim Wallace, Ed.D.**  
(510) 659-2542  
Associate Superintendent  
**Marcus Battle**  
(510) 659-2572

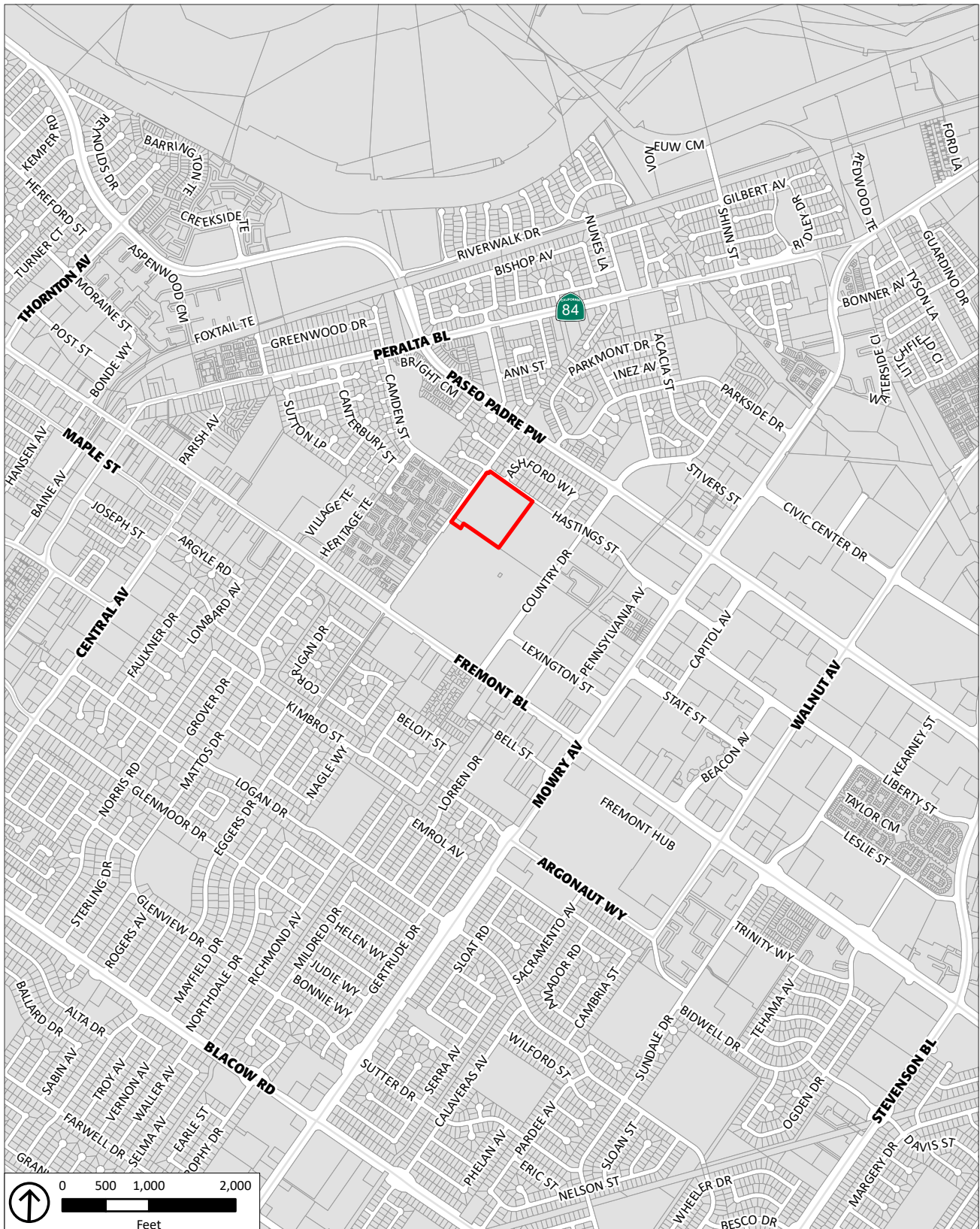
Associate Superintendent, Instruction  
**Debbie Ashmore**  
(510) 659-2583  
Assistant Superintendent, Human Resources  
**Raúl M. Zamora, Ed.D.**  
(510) 659-2556

several lower grade play apparatuses, a hardcourt play area, a quad, a terrace, an amphitheater, half basketball courts, shaded seating courts, bocce ball courts, and a large open sports field. The project site plan is shown on Attachment B.

Potential Environmental Effects: It has been determined that an EIR will be necessary to analyze potential environmental impacts associated with the project. Specific analysis will include, but will not be limited to Aesthetics; Air Quality and Greenhouse Gas Emissions; Biological Resources; Cultural Resources; Geology and Soils; Hazards and Hazardous Materials; Hydrology and Water Quality; Land Use and Planning; Noise; Population and Housing; Public Services; Recreation; Transportation and Circulation; Tribal Cultural Resources; Energy; and Utilities and Service Systems.

Environmental Effects Not Likely to Require Further Analysis: The proposed project is not anticipated to result in significant environmental effects in the following areas: Agricultural Resources; Mineral Resources; or Wildfire.

## NOTICE OF PREPARATION



Source: ESRI, 2019; City of Fremont, 2019; PlaceWorks, 2019.



Attachment A  
Local Vicinity



## NOTICE OF PREPARATION



Source: Google Earth, 2019; Gates + Associates, 2019; PlaceWorks, 2019.



Attachment B  
Site Plan