

APPENDIX A – LIGHTING DESIGNS

199755A La Puente City Park

La Puente, CA

Lighting System

Pole / Fixture Summary						
Pole ID	Pole Height	Mtg Height	Fixture Qty	Luminaire Type	Load	Circuit
P1	40'	40'	4	TLC-LED-600	2.32 kW	A
		27"	1	CREE OSQ	0.13 kW	C
P2	40'	40'	2	TLC-LED-400	0.80 kW	B
		40'	4	TLC-LED-600	2.32 kW	A
		27"	1	CREE OSQ	0.13 kW	C
P3	40'	40'	2	TLC-LED-400	0.80 kW	B
		27"	1	CREE OSQ	0.13 kW	C
P4	40'	40'	3	TLC-LED-400	1.20 kW	B
		27"	1	CREE OSQ	0.13 kW	C
		15'	1	CREE ARE	0.10 kW	D
6			21		8.16 kW	

Circuit Summary			
Circuit	Description	Load	Fixture Qty
A	Basketball	4.64 kW	8
B	Skate Park	2.8 kW	7
C	Cree Security	0.52 kW	4
D	ARE Security	0.2 kW	2

Fixture Type Summary							
Type	Source	Wattage	Lumens	L90	L80	L70	Quantity
CREE ARE	LED 5700K - 70 CRI	100W	10,742	--	--	--	2
CREE OSQ	LED 5700K - 70 CRI	130W	17,000	--	--	--	4
TLC-LED-600	LED 5700K - 75 CRI	580W	65,600	>81,000	>81,000	>81,000	8
TLC-LED-400	LED 5700K - 75 CRI	400W	46,500	>81,000	>81,000	>81,000	7

Light Level Summary

Calculation Grid Summary								
Grid Name	Calculation Metric	Illumination					Circuits	Fixture Qty
		Ave	Min	Max	Max/Min	Ave/Min		
BB1	Horizontal Illuminance	36.3	22	58	2.69	1.65	A	8
BB2	Horizontal Illuminance	34.6	21	55	2.56	1.65	A	8
Property Spill	Horizontal	0.10	0.05	0.15	3.34	2.05	A,B,C,D	21
Property Spill	Max Vertical Illuminance Metric	0.49	0.18	0.71	3.97	2.73	A,B,C,D	21
Security	Horizontal	1.41	0	8	488.31		C,D	6
Skate Park	Horizontal Illuminance	22.1	13	34	2.55	1.70	B	7

From Hometown to Professional

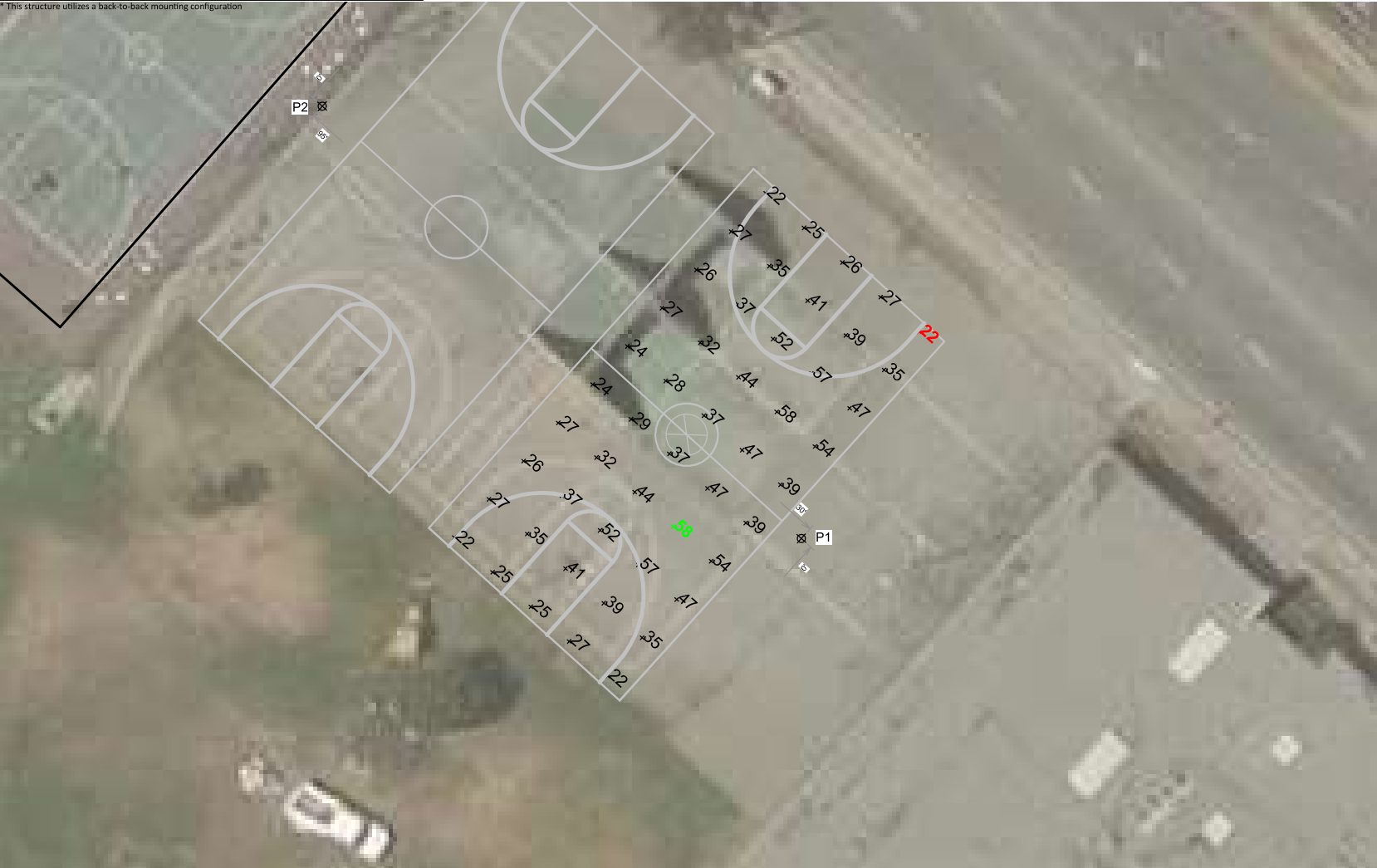


We Make It Happen.

EQUIPMENT LIST FOR AREAS SHOWN

Pole				Luminaires				
QTY	LOCATION	SIZE	GRADE ELEVATION	MOUNTING HEIGHT	LUMINAIRE TYPE	QTY / POLE	THIS GRID	OTHER GRIDS
1	P1	40'	-	27'	CREE OSQ	1	0	1
				40'	TLC-LED-600	4	4	0
1	P2	40'	-	40'	TLC-LED-400	2*	0	2
				27'	CREE OSQ	1	0	1
				40'	TLC-LED-600	4	4	0
2	TOTALS					12	8	4

* This structure utilizes a back-to-back mounting configuration



ENGINEERED DESIGN By: Isaac Sanders • File #199755A • 17-Jun-19

199755A La Puente City Park
La Puente, CA

GRID SUMMARY	
Name:	BB1
Size:	94' x 50'
Spacing:	10.0' x 10.0'
Height:	3.0' above grade

ILLUMINATION SUMMARY			
MAINTAINED HORIZONTAL FOOTCANDLES			
	Entire Grid		
Guaranteed Average:	30		
Scan Average:	36.34		
Maximum:	58		
Minimum:	22		
Avg / Min:	1.68		
Guaranteed Max / Min:	3		
Max / Min:	2.69		
UG (adjacent pts):	1.63		
CU:	0.35		
No. of Points:	50		
LUMINAIRE INFORMATION			
Color / CRI:	5700K - 75 CRI		
Luminaire Output:	46,500 / 65,600 lumens		
No. of Luminaires:	8		
Total Load:	4.64 kW		
Lumen Maintenance			
Luminaire Type	L90 hrs	L80 hrs	L70 hrs
TLC-LED-400	>81,000	>81,000	>81,000
TLC-LED-600	>81,000	>81,000	>81,000
Reported per TM-21-11. See luminaire datasheet for details.			

Reported per TM-21-11. See luminaire datasheet for details.

Guaranteed Performance: The ILLUMINATION described above is guaranteed per your Musco Warranty document and includes a 0.95 dirt depreciation factor.

Field Measurements: Individual field measurements may vary from computer-calculated predictions and should be taken in accordance with IESNA RP-6-15.

Electrical System Requirements: Refer to Amperage Draw Chart and/or the "Musco Control System Summary" for electrical sizing.

Installation Requirements: Results assume ± 3% nominal voltage at line side of the driver and structures located within 3 feet (1m) of design locations.



We Make It Happen.

Not to be reproduced in whole or part without the written consent of Musco Sports Lighting, LLC. ©1981, 2019 Musco Sports Lighting, LLC.

ILLUMINATION SUMMARY

EQUIPMENT LIST FOR AREAS SHOWN

Pole				Luminaires				
QTY	LOCATION	SIZE	GRADE ELEVATION	MOUNTING HEIGHT	LUMINAIRE TYPE	QTY / POLE	THIS GRID	OTHER GRIDS
1	P1	40'	-	27'	CREE OSQ	1	0	1
				40'	TLC-LED-600	4	4	0
1	P2	40'	-	40'	TLC-LED-400	2*	0	2
				27'	CREE OSQ	1	0	1
				40'	TLC-LED-600	4	4	0
2	TOTALS					12	8	4

* This structure utilizes a back-to-back mounting configuration



ENGINEERED DESIGN By: Isaac Sanders • File #199755A • 17-Jun-19

199755A La Puente City Park
La Puente, CA

GRID SUMMARY	
Name:	BB2
Size:	94' x 50'
Spacing:	10.0' x 10.0'
Height:	3.0' above grade

ILLUMINATION SUMMARY			
MAINTAINED HORIZONTAL FOOTCANDLES			
	Entire Grid		
Guaranteed Average:	30		
Scan Average:	34.57		
Maximum:	55		
Minimum:	21		
Avg / Min:	1.62		
Guaranteed Max / Min:	3		
Max / Min:	2.56		
UG (adjacent pts):	1.60		
CU:	0.33		
No. of Points:	50		
LUMINAIRE INFORMATION			
Color / CRI:	5700K - 75 CRI		
Luminaire Output:	46,500 / 65,600 lumens		
No. of Luminaires:	8		
Total Load:	4.64 kW		
Lumen Maintenance			
Luminaire Type	L90 hrs	L80 hrs	L70 hrs
TLC-LED-400	>81,000	>81,000	>81,000
TLC-LED-600	>81,000	>81,000	>81,000
Reported per TM-21-11. See luminaire datasheet for details.			

Reported per TM-21-11. See luminaire datasheet for details.

Guaranteed Performance: The ILLUMINATION described above is guaranteed per your Musco Warranty document and includes a 0.95 dirt depreciation factor.

Field Measurements: Individual field measurements may vary from computer-calculated predictions and should be taken in accordance with IESNA RP-6-15.

Electrical System Requirements: Refer to Amperage Draw Chart and/or the "Musco Control System Summary" for electrical sizing.

Installation Requirements: Results assume ± 3% nominal voltage at line side of the driver and structures located within 3 feet (1m) of design locations.



We Make It Happen.

Not to be reproduced in whole or part without the written consent of Musco Sports Lighting, LLC. ©1981, 2019 Musco Sports Lighting, LLC.

ILLUMINATION SUMMARY

EQUIPMENT LIST FOR AREAS SHOWN

Pole				Luminaires				
QTY	LOCATION	SIZE	GRADE ELEVATION	MOUNTING HEIGHT	LUMINAIRE TYPE	QTY / POLE	THIS GRID	OTHER GRIDS
1	P2	40'	-	40'	TLC-LED-400	2	2	0
				27'	CREE OSQ	1	0	1
				40'	TLC-LED-600	4	0	4
1	P3	40'	-	27'	CREE OSQ	1	0	1
				40'	TLC-LED-400	2	2	0
1	P4	40'	-	27'	CREE OSQ	1	0	1
				40'	TLC-LED-400	3	3	0
3	TOTALS					14	7	7

* This structure utilizes a back-to-back mounting configuration



ENGINEERED DESIGN By: Isaac Sanders • File #199755A • 17-Jun-19

199755A La Puente City Park
La Puente, CA

GRID SUMMARY			
Name:	Skate Park		
Size:	100' x 100'		
Spacing:	10.0' x 10.0'		
Height:	3.0' above grade		
ILLUMINATION SUMMARY			
MAINTAINED HORIZONTAL FOOTCANDLES			
	Entire Grid		
Guaranteed Average:	20		
Scan Average:	22.12		
Maximum:	34		
Minimum:	13		
Avg / Min:	1.64		
Guaranteed Max / Min:	3		
Max / Min:	2.55		
UG (adjacent pts):	1.60		
CU:	0.68		
No. of Points:	100		
LUMINAIRE INFORMATION			
Color / CRI:	5700K - 75 CRI		
Luminaire Output:	46,500 lumens		
No. of Luminaires:	7		
Total Load:	2.8 kW		
Lumen Maintenance			
Luminaire Type	L90 hrs	L80 hrs	L70 hrs
TLC-LED-400	>81,000	>81,000	>81,000
Reported per TM-21-11. See luminaire datasheet for details.			

Guaranteed Performance: The ILLUMINATION described above is guaranteed per your Musco Warranty document and includes a 0.95 dirt depreciation factor.

Field Measurements: Individual field measurements may vary from computer-calculated predictions and should be taken in accordance with IESNA RP-6-15.

Electrical System Requirements: Refer to Amperage Draw Chart and/or the "Musco Control System Summary" for electrical sizing.

Installation Requirements: Results assume ± 3% nominal voltage at line side of the driver and structures located within 3 feet (1m) of design locations.



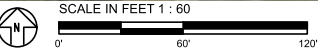
Not to be reproduced in whole or part without the written consent of Musco Sports Lighting, LLC. ©1981, 2019 Musco Sports Lighting, LLC.

ILLUMINATION SUMMARY

EQUIPMENT LIST FOR AREAS SHOWN

Pole				Luminaires				
QTY	LOCATION	SIZE	GRADE ELEVATION	MOUNTING HEIGHT	LUMINAIRE TYPE	QTY / POLE	THIS GRID	OTHER GRIDS
1	P1	40'	-	27'	CREE OSQ	1	1	0
				40'	TLC-LED-600	4	4	0
1	P2	40'	-	40'	TLC-LED-400	2*	2	0
				27'	CREE OSQ	1	1	0
				40'	TLC-LED-600	4	4	0
1	P3	40'	-	27'	CREE OSQ	1	1	0
				40'	TLC-LED-400	2	2	0
1	P4	40'	-	27'	CREE OSQ	1	1	0
				40'	TLC-LED-400	3	3	0
2	P5-P6	15'	-	15'	CREE ARE	1	1	0
6	TOTALS					21	21	0

* This structure utilizes a back-to-back mounting configuration



Pole location(s) ⦿ dimensions are relative to 0,0 reference point(s) ⊗

199755A La Puente City Park
La Puente, CA

GRID SUMMARY

Name: Property Spill
Spacing: 30.0'
Height: 3.0' above grade

ILLUMINATION SUMMARY

HORIZONTAL FOOTCANDLES	
Entire Grid	
Scan Average:	0.1026
Maximum:	0.15
Minimum:	0.05
No. of Points:	12
LUMINAIRE INFORMATION	
Color / CRI:	5700K - 70 CRI / 5700K - 75 CRI / 5700K - 75 CRI
Luminaire Output:	10,742 / 17,000 / 46,500 / 65,600 lumens
No. of Luminaires:	21
Total Load:	8.16 kW

Lumen Maintenance			
Luminaire Type	L90 hrs	L80 hrs	L70 hrs
CREE ARE	--	--	--
CREE OSQ	--	--	--
TLC-LED-400	>81,000	>81,000	>81,000
TLC-LED-600	>81,000	>81,000	>81,000

Reported per TM-21-11. See luminaire datasheet for details.

Guaranteed Performance: The ILLUMINATION described above is guaranteed per your Musco Warranty document.

Field Measurements: Individual field measurements may vary from computer-calculated predictions and should be taken in accordance with IESNA RP-6-15.

Electrical System Requirements: Refer to Amperage Draw Chart and/or the "Musco Control System Summary" for electrical sizing.

Installation Requirements: Results assume ± 3% nominal voltage at line side of the driver and structures located within 3 feet (1m) of design locations.



Not to be reproduced in whole or part without the written consent of Musco Sports Lighting, LLC. ©1981, 2019 Musco Sports Lighting, LLC.

ILLUMINATION SUMMARY

EQUIPMENT LIST FOR AREAS SHOWN

QTY	LOCATION	Pole		MOUNTING HEIGHT	Luminaires			
		SIZE	GRADE ELEVATION		LUMINAIRE TYPE	QTY / POLE	THIS GRID	OTHER GRIDS
1	P1	40'	-	27'	CREE OSQ	1	1	0
				40'	TLC-LED-600	4	4	0
1	P2	40'	-	40'	TLC-LED-400	2*	2	0
				27'	CREE OSQ	1	1	0
				40'	TLC-LED-600	4	4	0
1	P3	40'	-	27'	CREE OSQ	1	1	0
				40'	TLC-LED-400	2	2	0
1	P4	40'	-	27'	CREE OSQ	1	1	0
				40'	TLC-LED-400	3	3	0
2	P5-P6	15'	-	15'	CREE ARE	1	1	0
6	TOTALS					21	21	0

* This structure utilizes a back-to-back mounting configuration



Pole location(s) ⚡ dimensions are relative to 0,0 reference point(s) ⊗

199755A La Puente City Park
La Puente, CA

GRID SUMMARY

Name: Property Spill
Spacing: 30.0'
Height: 3.0' above grade

ILLUMINATION SUMMARY

MAX VERTICAL FOOTCANDLES	
Entire Grid	
Scan Average:	0.4909
Maximum:	0.71
Minimum:	0.18
No. of Points:	12
LUMINAIRE INFORMATION	
Color / CRI:	5700K - 70 CRI / 5700K - 75 CRI / 5700K - 75 CRI
Luminaire Output:	10,742 / 17,000 / 46,500 / 65,600 lumens
No. of Luminaires:	21
Total Load:	8.16 kW

Lumen Maintenance			
Luminaire Type	L90 hrs	L80 hrs	L70 hrs
CREE ARE	--	--	--
CREE OSQ	--	--	--
TLC-LED-400	>81,000	>81,000	>81,000
TLC-LED-600	>81,000	>81,000	>81,000

Reported per TM-21-11. See luminaire datasheet for details.

Guaranteed Performance: The ILLUMINATION described above is guaranteed per your Musco Warranty document.

Field Measurements: Individual field measurements may vary from computer-calculated predictions and should be taken in accordance with IESNA RP-6-15.

Electrical System Requirements: Refer to Amperage Draw Chart and/or the "Musco Control System Summary" for electrical sizing.

Installation Requirements: Results assume ± 3% nominal voltage at line side of the driver and structures located within 3 feet (1m) of design locations.



We Make It Happen.™

Not to be reproduced in whole or part without the written consent of Musco Sports Lighting, LLC. ©1981, 2019 Musco Sports Lighting, LLC.

ILLUMINATION SUMMARY



199755A La Puente City Park

La Puente, CA

EQUIPMENT LAYOUT

INCLUDES:

- BB1
- BB2
- Skate Park

Electrical System Requirements: Refer to Amperage Draw Chart and/or the "Musco Control System Summary" for electrical sizing.

Installation Requirements: Results assume ± 3% nominal voltage at line side of the driver and structures located within 3 feet (1m) of design locations.

EQUIPMENT LIST FOR AREAS SHOWN

QTY	LOCATION	Pole		MOUNTING HEIGHT	Luminaires		QTY / POLE
		SIZE	GRADE ELEVATION		TYPE		
1	P1	40'	-	27'	CREE OSQ	1	4
1	P2	40'	-	27'	TLC-LED-400	2*	1
1	P3	40'	-	27'	TLC-LED-600	4	1
1	P4	40'	-	27'	CREE OSQ	1	1
2	P5-P6	15'	-	15'	CREE ARE	1	1
6	TOTALS						21

* This structure utilizes a back-to-back mounting configuration

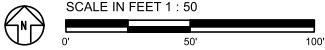
SINGLE LUMINAIRE AMPERAGE DRAW CHART

Ballast Specifications (.90 min power factor)	Line Amperage Per Luminaire (max draw)					
	208 (60)	220 (60)	240 (60)	277 (60)	347 (60)	480 (60)
Single Phase Voltage	208 (60)	220 (60)	240 (60)	277 (60)	347 (60)	480 (60)
Cree ARE	-	-	-	-	-	-
Cree OSQ	-	-	-	-	0.4	0.3
TLC-LED-600-A	3.4	3.2	3.0	2.6	2.0	1.9
TLC-LED-400-A	2.3	2.2	2.0	1.7	1.4	1.3



Not to be reproduced in whole or part without the written consent of Musco Sports Lighting, LLC. ©1981, 2019 Musco Sports Lighting, LLC.

EQUIPMENT LAYOUT



ENGINEERED DESIGN By: Isaac Sanders • File #199755A • 17-Jun-19

Pole location(s) ⚡ dimensions are relative to 0,0 reference point(s) ⊗

La Puente City Park

La Puente, CA

Lighting System

Pole / Fixture Summary						
Pole ID	Pole Height	Mtg Height	Fixture Qty	Luminaire Type	Load	Circuit
A1	70'	70'	2	TLC-LED-1200	2.34 kW	A
		16'	1	TLC-BT-575	0.58 kW	A
		70'	2	TLC-LED-1200	2.34 kW	B
		16'	1	TLC-BT-575	0.58 kW	B
		27"	2	CREE OSQ	0.26 kW	L
A2	70'	70'	4	TLC-LED-1200	4.68 kW	C
		16'	1	TLC-BT-575	0.58 kW	A
		70'	2	TLC-LED-1200	2.34 kW	A
		27"	2	CREE OSQ	0.26 kW	L
		70'	2	TLC-LED-1200	2.34 kW	B
A3	70'	16'	1	TLC-BT-575	0.58 kW	B
		27"	2	CREE OSQ	0.26 kW	L
		70'	2	TLC-LED-1200	2.34 kW	F
		16'	1	TLC-BT-575	0.58 kW	F
		27"	1	CREE OSQ	0.13 kW	L
A4	70'	70'	2	TLC-LED-1200	2.34 kW	F
		16'	1	TLC-BT-575	0.58 kW	F
		27"	1	CREE OSQ	0.13 kW	L
		70'	2	TLC-LED-1200	2.34 kW	F
		16'	1	TLC-BT-575	0.58 kW	F
A5	70'	70'	2	TLC-LED-1200	2.34 kW	F
		16'	1	TLC-BT-575	0.58 kW	F
		27"	1	CREE OSQ	0.13 kW	J
		70'	2	TLC-LED-1200	2.34 kW	G
		16'	1	TLC-BT-575	0.58 kW	G
A6-A7	70'	27"	1	CREE OSQ	0.13 kW	L
		70'	2	TLC-LED-1200	2.34 kW	G
		16'	1	TLC-BT-575	0.58 kW	G
		27"	1	CREE OSQ	0.13 kW	L
		80'	5	TLC-LED-1200	5.85 kW	A
B1	80'	80'	4	TLC-LED-1200	4.68 kW	B
		16'	1	TLC-BT-575	0.58 kW	B
		16'	1	TLC-BT-575	0.58 kW	A
		27"	1	CREE OSQ	0.13 kW	L
		80'	5	TLC-LED-1200	5.85 kW	A
B2	80'	80'	5	TLC-LED-1200	5.85 kW	A
		16'	1	TLC-BT-575	0.58 kW	A
		27"	1	CREE OSQ	0.13 kW	L
		80'	5	TLC-LED-1200	5.85 kW	B
		16'	1	TLC-BT-575	0.58 kW	B
B3	80'	80'	4	TLC-LED-1200	4.68 kW	C
		27"	2	CREE OSQ	0.26 kW	L
		70'	5	TLC-LED-1200	5.85 kW	F
		16'	1	TLC-BT-575	0.58 kW	F
		27"	1	CREE OSQ	0.13 kW	L
B4	70'	70'	1	TLC-LED-1200	1.17 kW	D
		80'	5	TLC-LED-1200	5.85 kW	F
		16'	1	TLC-BT-575	0.58 kW	F
		80'	5	TLC-LED-1200	5.85 kW	G
		16'	1	TLC-BT-575	0.58 kW	G
B5	80'	27"	1	CREE OSQ	0.13 kW	L
		70'	5	TLC-LED-1200	5.85 kW	G
		16'	1	TLC-BT-575	0.58 kW	G
		27"	1	CREE OSQ	0.13 kW	L
		50'	2	TLC-LED-400	0.80 kW	K
DP1	50'	27"	1	CREE OSQ	0.13 kW	L
		70'	4	TLC-LED-1200	4.68 kW	C
		70'	2	TLC-LED-1200	2.34 kW	E
		27"	1	CREE OSQ	0.13 kW	L
		60'	2	TLC-LED-900	1.78 kW	J
S1-S4	60'	27"	1	CREE OSQ	0.13 kW	L
		50'	2	TLC-LED-600	1.16 kW	H
		27"	1	CREE OSQ	0.13 kW	L
		50'	2	TLC-LED-600	1.16 kW	H
		50'	2	TLC-LED-600	1.16 kW	H

From Hometown to Professional



La Puente City Park

La Puente, CA

Pole / Fixture Summary						
Pole ID	Pole Height	Mtg Height	Fixture Qty	Luminaire Type	Load	Circuit
		50'	2	TLC-LED-600	1.16 kW	I
		27"	1	CREE OSQ	0.13 kW	L
TB3	50'	50'	2	TLC-LED-600	1.16 kW	I
		27"	1	CREE OSQ	0.13 kW	L
23			137		114.19 kW	

From Hometown to Professional



La Puente City Park

La Puente, CA

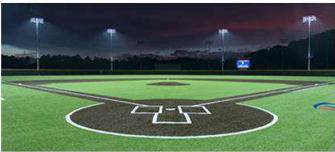
Circuit Summary			
Circuit	Description	Load	Fixture Qty
A	LL 1	18.68 kW	18
B	LL 2	17.51 kW	17
C	Football	18.72 kW	16
D	Cheer Area	1.17 kW	1
E	V Grid	4.68 kW	4
F	Softball 1	18.68 kW	18
G	Softball 2	18.68 kW	18
H	TB1	2.32 kW	4
I	TB 2	2.32 kW	4
J	Soccer	7.25 kW	9
K	Dog Park	0.8 kW	2
L	Security	3.38 kW	26

Fixture Type Summary							
Type	Source	Wattage	Lumens	L90	L80	L70	Quantity
TLC-LED-1200	LED 5700K - 75 CRI	1170W	136,000	>81,000	>81,000	>81,000	76
TLC-LED-600	LED 5700K - 75 CRI	580W	65,600	>81,000	>81,000	>81,000	8
CREE OSQ	LED 5700K - 70 CRI	130W	17,000	--	--	--	27
TLC-BT-575	LED 5700K - 75 CRI	575W	52,000	>81,000	>81,000	>81,000	16
TLC-LED-900	LED 5700K - 75 CRI	890W	89,600	>81,000	>81,000	>81,000	8
TLC-LED-400	LED 5700K - 75 CRI	400W	46,500	>81,000	>81,000	>81,000	2

Light Level Summary

Calculation Grid Summary								
Grid Name	Calculation Metric	Illumination					Circuits	Fixture Qty
		Ave	Min	Max	Max/Min	Ave/Min		
Cheer Area	Horizontal Illuminance	17.2	5	32	7.10	3.44	D	1
Dog Park	Horizontal Illuminance	11.9	5	20	3.82	2.38	K	2
Far side Temple Ave.	Horizontal	0.08	0	0.36	4927.45		A,B,C,D,E, F,G,H,I,J,K,L	137
Far side Temple Ave.	Max Candela (by Fixture)	2450	162	6945	42.75	15.08	A,B,C,D,E, F,G,H,I,J,K,L	137
Far side Temple Ave.	Max Vertical Illuminance Metric	0.17	0	0.70	459.90		A,B,C,D,E, F,G,H,I,J,K,L	137
Football	Horizontal Illuminance	34.5	27	46	1.67	1.28	C	16
LL 1 (Infield)	Horizontal Illuminance	50.7	35	67	1.88	1.45	A	18
LL 1 (Outfield)	Horizontal Illuminance	30.7	18	45	2.49	1.71	A	18
LL 2 (Infield)	Horizontal Illuminance	52	37	68	1.84	1.41	B	17
LL 2 (Outfield)	Horizontal Illuminance	33.8	19	46	2.42	1.78	B	17
Near Side Temple Ave.	Horizontal	1.43	0	6.11	42811.46		A,B,C,D,E, F,G,H,I,J,K,L	137
Near Side Temple Ave.	Max Candela (by Fixture)	24983	161	103965	644.81	154.95	A,B,C,D,E, F,G,H,I,J,K,L	137
Near Side Temple Ave.	Max Vertical Illuminance Metric	2.21	0	8.90	4348.26		A,B,C,D,E, F,G,H,I,J,K,L	137
Soccer	Horizontal Illuminance	31.1	22	41	1.90	1.41	J	9
Softball 1 (Infield)	Horizontal Illuminance	50.5	34	67	1.98	1.49	F	18
Softball 1 (Outfield)	Horizontal Illuminance	30.4	19	44	2.37	1.60	F	18
Softball 2 (Infield)	Horizontal Illuminance	50.8	34	66	1.96	1.49	G	18
Softball 2 (Outfield)	Horizontal Illuminance	31.2	19	46	2.48	1.64	G	18
Tee Ball 1	Horizontal Illuminance	36.4	24	44	1.83	1.52	H	4
Tee Ball 2	Horizontal Illuminance	35.4	24	42	1.79	1.48	I	4
V Grid	Horizontal	26.7	11	44	4.11	2.43	E	4
West Spill	Horizontal	0.05	0	0.24	504.93		A,B,C,D,E, F,G,H,I,J,K,L	137
West Spill	Max Candela (by Fixture)	1897	409	6222	15.20	4.63	A,B,C,D,E, F,G,H,I,J,K,L	137
West Spill	Max Vertical Illuminance Metric	0.16	0.01	0.60	76.24	15.50	A,B,C,D,E, F,G,H,I,J,K,L	137

From Hometown to Professional



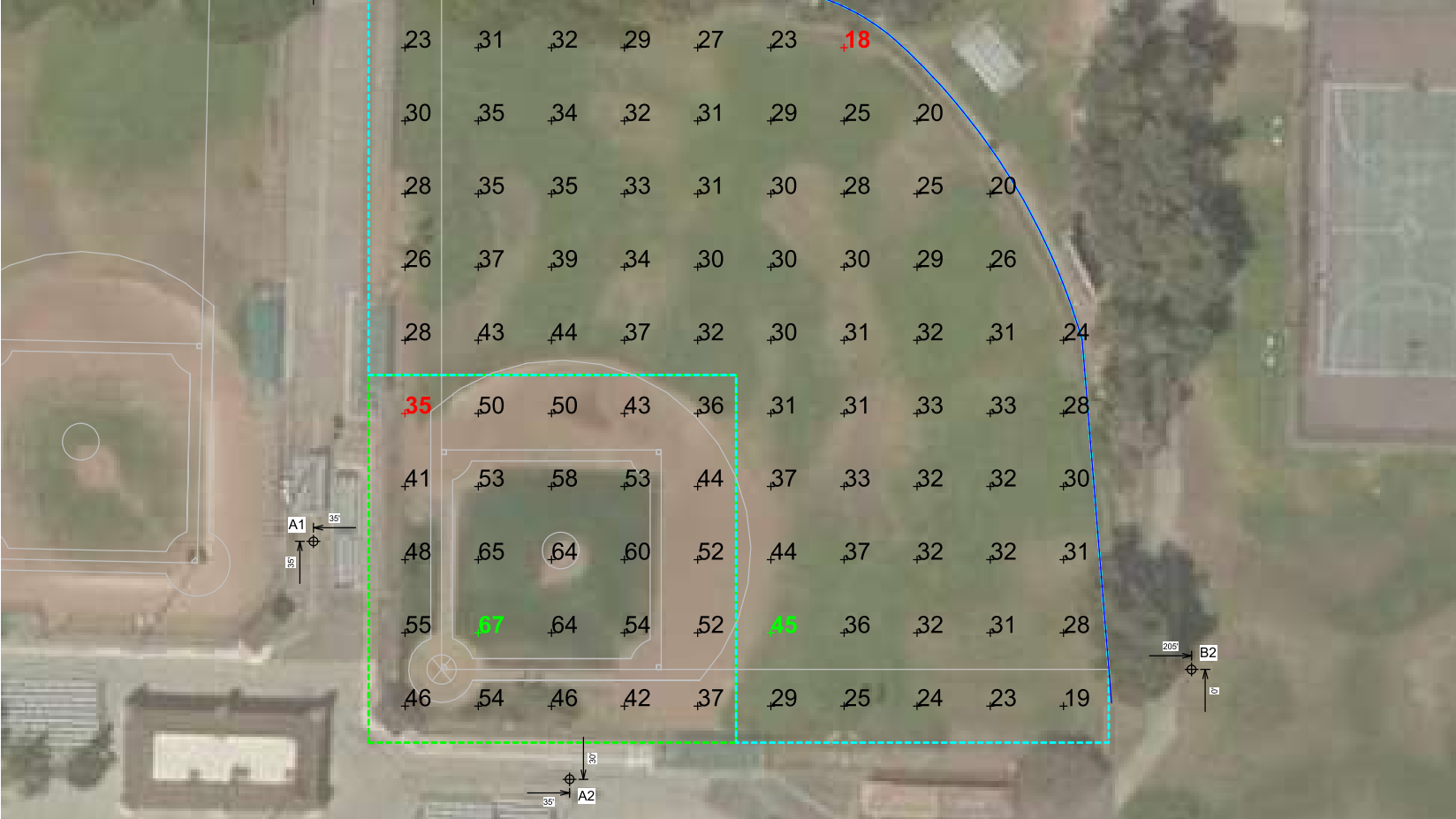
We Make It Happen.

Not to be reproduced in whole or part without the written consent of Musco Sports Lighting, LLC. ©1981, 2019 Musco Sports Lighting, LLC.

EQUIPMENT LIST FOR AREAS SHOWN

Pole				Luminaires					
QTY	LOCATION	SIZE	GRADE ELEVATION	MOUNTING HEIGHT	LUMINAIRE TYPE	QTY / POLE	THIS GRID	OTHER GRIDS	
1	A1	70'	-	15.5'	TLC-BT-575	1/1*	1	1	1
				27'	CREE OSQ	1/1*	0	2	2
				70'	TLC-LED-1200	2/2*	2	2	2
1	A2	70'	-	15.5'	TLC-BT-575	1	1	0	0
				27'	CREE OSQ	1/1*	0	2	2
				70'	TLC-LED-1200	2/4*	2	4	4
1	B1	80'	-	15.5'	TLC-BT-575	2	1	1	1
				27'	CREE OSQ	1	0	1	1
				80'	TLC-LED-1200	9	5	4	4
1	B2	80'	-	15.5'	TLC-BT-575	1	1	0	0
				27'	CREE OSQ	1	0	1	1
				80'	TLC-LED-1200	5	5	0	0
4	TOTALS					36	18	18	

* This structure utilizes a back-to-back mounting configuration

La Puente City Park
La Puente, CA

GRID SUMMARY

Name: LL 1
Size: Irregular 188' / 208' / 182'
Spacing: 20.0' x 20.0'
Height: 3.0' above grade

ILLUMINATION SUMMARY

MAINTAINED HORIZONTAL FOOTCANDLES

	Infield	Outfield
Guaranteed Average:	50	30
Scan Average:	50.7	30.7
Maximum:	67	45
Minimum:	35	18
Avg / Min:	1.43	1.71
Guaranteed Max / Min:	2	2.5
Max / Min:	1.88	2.49
UG (adjacent pts):	1.42	1.57
CU:	0.67	
No. of Points:	25	68

LUMINAIRE INFORMATION

Color / CRI: 5700K - 75 CRI
Luminaire Output: 136,000 / 52,000 lumens
No. of Luminaires: 18
Total Load: 18.68 kW

Lumen Maintenance			
Luminaire Type	L90 hrs	L80 hrs	L70 hrs
TLC-LED-1200	>81,000	>81,000	>81,000
TLC-BT-575	>81,000	>81,000	>81,000

Reported per TM-21-11. See luminaire datasheet for details.

Guaranteed Performance: The ILLUMINATION described above is guaranteed per your Musco Warranty document and includes a 0.95 dirt depreciation factor.

Field Measurements: Individual field measurements may vary from computer-calculated predictions and should be taken in accordance with IESNA RP-6-15.

Electrical System Requirements: Refer to Amperage Draw Chart and/or the "Musco Control System Summary" for electrical sizing.

Installation Requirements: Results assume $\pm 3\%$ nominal voltage at line side of the driver and structures located within 3 feet (1m) of design locations.

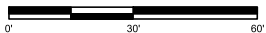


Not to be reproduced in whole or part without the written consent of Musco Sports Lighting, LLC. ©1981, 2019 Musco Sports Lighting, LLC.

ILLUMINATION SUMMARY



SCALE IN FEET 1 : 30



ENGINEERED DESIGN By: Isaac Sanders • File #200373-A • 26-Jul-19

Pole location(s) Ⓢ dimensions are relative to 0,0 reference point(s) ⊗

EQUIPMENT LIST FOR AREAS SHOWN

Pole				Luminaires				
QTY	LOCATION	SIZE	GRADE ELEVATION	MOUNTING HEIGHT	LUMINAIRE TYPE	QTY / POLE	THIS GRID	OTHER GRIDS
1	A1	70'	-	15.5'	TLC-BT-575	1/1*	1	1
				27'	CREE OSQ	1/1*	0	2
				70'	TLC-LED-1200	2/2*	2	2
1	A3	70'	-	15.5'	TLC-BT-575	1	1	0
				27'	CREE OSQ	1/1*	0	2
				70'	TLC-LED-1200	2	2	0
1	B1	80'	-	15.5'	TLC-BT-575	2	1	1
				27'	CREE OSQ	1	0	1
				80'	TLC-LED-1200	9	4	5
1	B3	80'	-	15.5'	TLC-BT-575	1	1	0
				27'	CREE OSQ	1/1*	0	2
				80'	TLC-LED-1200	5/4*	5	4
4	TOTALS					37	17	20

* This structure utilizes a back-to-back mounting configuration

La Puente City Park

La Puente, CA

GRID SUMMARY

Name: LL 2

Size: Irregular 184' / 182' / 160'

Spacing: 20.0' x 20.0'

Height: 3.0' above grade

ILLUMINATION SUMMARY

MAINTAINED HORIZONTAL FOOTCANDLES

	Infield	Outfield
Guaranteed Average:	50	30
Scan Average:	52.0	33.8
Maximum:	68	46
Minimum:	37	19
Avg / Min:	1.41	1.77
Guaranteed Max / Min:	2	2.5
Max / Min:	1.84	2.42
UG (adjacent pts):	1.40	1.52
CU:	0.64	
No. of Points:	25	52

LUMINAIRE INFORMATION

Color / CRI: 5700K - 75 CRI

Luminaire Output: 136,000 / 52,000 lumens

No. of Luminaires: 17

Total Load: 17.51 kW

Lumen Maintenance			
Luminaire Type	L90 hrs	L80 hrs	L70 hrs
TLC-LED-1200	>81,000	>81,000	>81,000
TLC-BT-575	>81,000	>81,000	>81,000

Reported per TM-21-11. See luminaire datasheet for details.

Guaranteed Performance: The ILLUMINATION described above is guaranteed per your Musco Warranty document and includes a 0.95 dirt depreciation factor.

Field Measurements: Individual field measurements may vary from computer-calculated predictions and should be taken in accordance with IESNA RP-6-15.

Electrical System Requirements: Refer to Amperage Draw Chart and/or the "Musco Control System Summary" for electrical sizing.

Installation Requirements: Results assume \pm 3% nominal voltage at line side of the driver and structures located within 3 feet (1m) of design locations.



We Make It Happen.

Not to be reproduced in whole or part without the written consent of Musco Sports Lighting, LLC. ©1981, 2019 Musco Sports Lighting, LLC.

ILLUMINATION SUMMARY



Pole location(s) Ⓢ dimensions are relative to 0,0 reference point(s) ⊗

EQUIPMENT LIST FOR AREAS SHOWN

Pole				Luminaires				
QTY	LOCATION	SIZE	GRADE ELEVATION	MOUNTING HEIGHT	LUMINAIRE TYPE	QTY / POLE	THIS GRID	OTHER GRIDS
1	A2	70'	-	15.5'	TLC-BT-575	1	0	1
				27'	CREE OSQ	1/1*	0	2
				70'	TLC-LED-1200	2/4*	4	2
1	B3	80'	-	15.5'	TLC-BT-575	1	0	1
				27'	CREE OSQ	1/1*	0	2
				80'	TLC-LED-1200	5/4*	4	5
2	F1-F2	70'	-	27'	CREE OSQ	1	0	1
				70'	TLC-LED-1200	4/2*	4	2
4	TOTALS					35	16	19

* This structure utilizes a back-to-back mounting configuration



La Puente City Park

La Puente, CA

GRID SUMMARY

Name: Football
Size: 360' x 140'
Spacing: 30.0' x 30.0'
Height: 3.0' above grade

ILLUMINATION SUMMARY

MAINTAINED HORIZONTAL FOOTCANDLES

Entire Grid
Guaranteed Average: 30
Scan Average: 34.5
Maximum: 46
Minimum: 27
Avg / Min: 1.26
Guaranteed Max / Min: 2
Max / Min: 1.67
UG (adjacent pts): 1.46
CU: 0.69
No. of Points: 48

LUMINAIRE INFORMATION

Color / CRI: 5700K - 75 CRI
Luminaire Output: 136,000 lumens
No. of Luminaires: 16
Total Load: 18.72 kW

Lumen Maintenance

Luminaire Type	L90 hrs	L80 hrs	L70 hrs
TLC-LED-1200	>81,000	>81,000	>81,000

Reported per TM-21-11. See luminaire datasheet for details.

Guaranteed Performance: The ILLUMINATION described above is guaranteed per your Musco Warranty document and includes a 0.95 dirt depreciation factor.

Field Measurements: Individual field measurements may vary from computer-calculated predictions and should be taken in accordance with IESNA RP-6-15.

Electrical System Requirements: Refer to Amperage Draw Chart and/or the "Musco Control System Summary" for electrical sizing.

Installation Requirements: Results assume ± 3% nominal voltage at line side of the driver and structures located within 3 feet (1m) of design locations.

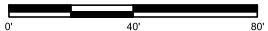


Not to be reproduced in whole or part without the written consent of Musco Sports Lighting, LLC. ©1981, 2019 Musco Sports Lighting, LLC.

ILLUMINATION SUMMARY



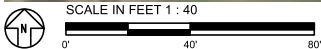
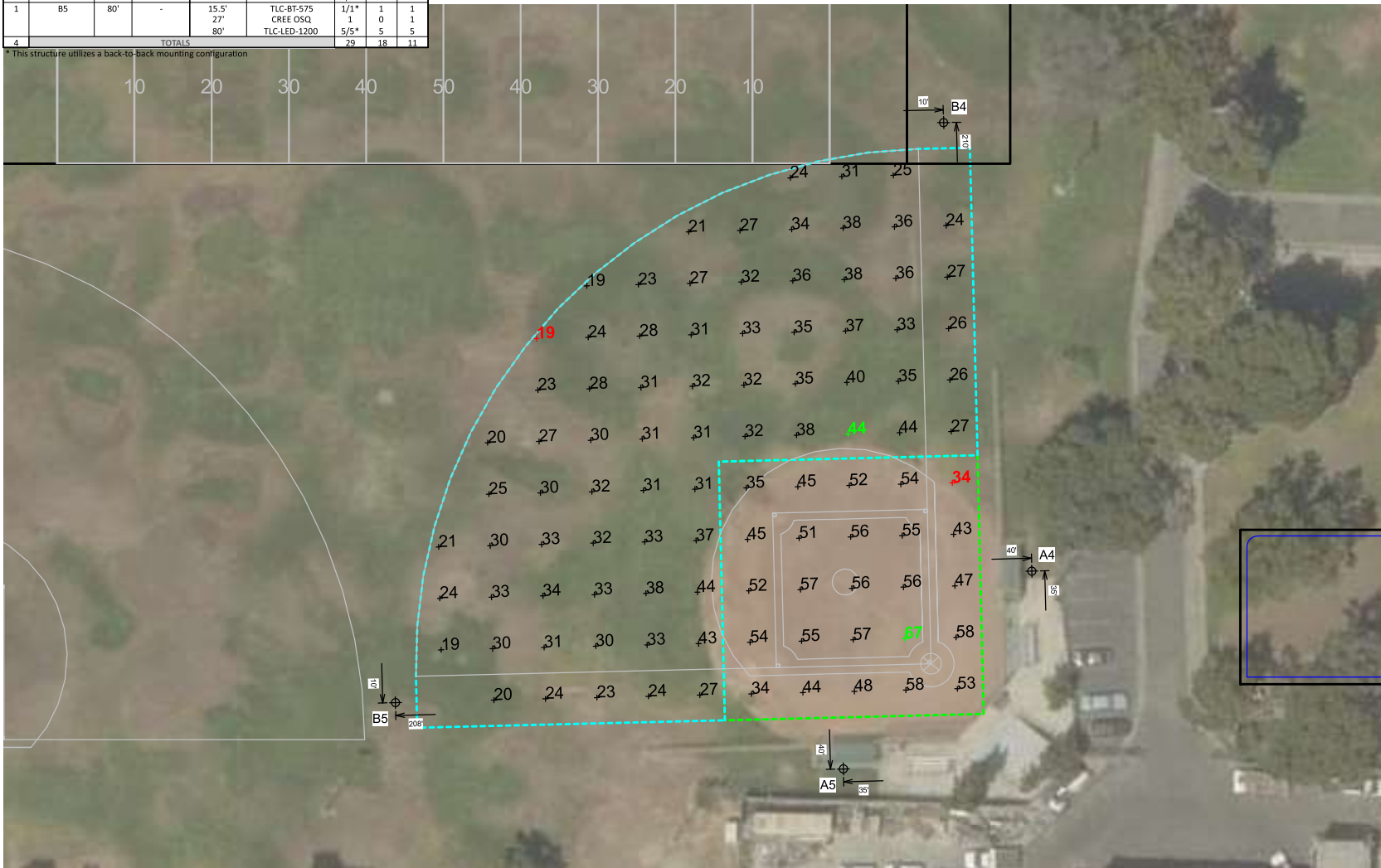
SCALE IN FEET 1 : 40



Pole location(s) ⚡ dimensions are relative to 0,0 reference point(s) ⊗

EQUIPMENT LIST FOR AREAS SHOWN								
Pole				Luminaires				
QTY	LOCATION	SIZE	GRADE ELEVATION	MOUNTING HEIGHT	LUMINAIRE TYPE	QTY / POLE	THIS GRID	OTHER GRIDS
2	A4-A5	70'	-	15.5'	TLC-BT-575	1	1	0
				27'	CREE OSQ	1	0	1
				70'	TLC-LED-1200	2	2	0
1	B4	70'	-	15.5'	TLC-BT-575	1	1	0
				27'	CREE OSQ	1	0	1
				70'	TLC-LED-1200	5/1*	5	1
1	B5	80'	-	15.5'	TLC-BT-575	1/1*	1	1
				27'	CREE OSQ	1	0	1
				80'	TLC-LED-1200	5/5*	5	5
4	TOTALS					29	18	11

* This structure utilizes a back-to-back mounting configuration



ENGINEERED DESIGN By: Isaac Sanders • File #200373-A • 26-Jul-19

La Puente City Park

La Puente, CA

GRID SUMMARY	
Name:	Softball 1
Size:	200' / 200' / 200' - basepath 60'
Spacing:	20.0' x 20.0'
Height:	3.0' above grade

ILLUMINATION SUMMARY			
MAINTAINED HORIZONTAL FOOTCANDLES			
	Infield	Outfield	
Guaranteed Average:	50	30	
Scan Average:	50.5	30.4	
Maximum:	67	44	
Minimum:	34	19	
Avg / Min:	1.49	1.62	
Guaranteed Max / Min:	2	2.5	
Max / Min:	1.98	2.37	
UG (adjacent pts):	1.58	1.64	
CU:	0.68		
No. of Points:	25	73	
LUMINAIRE INFORMATION			
Color / CRI:	5700K - 75 CRI		
Luminaire Output:	136,000 / 52,000 lumens		
No. of Luminaires:	18		
Total Load:	18.68 kW		
Lumen Maintenance			
Luminaire Type	L90 hrs	L80 hrs	L70 hrs
TLC-LED-1200	>81,000	>81,000	>81,000
TLC-BT-575	>81,000	>81,000	>81,000
Reported per TM-21-11. See luminaire datasheet for details.			

Reported per TM-21-11. See luminaire datasheet for details.

Guaranteed Performance: The ILLUMINATION described above is guaranteed per your Musco Warranty document and includes a 0.95 dirt depreciation factor.

Field Measurements: Individual field measurements may vary from computer-calculated predictions and should be taken in accordance with IESNA RP-6-15.

Electrical System Requirements: Refer to Amperage Draw Chart and/or the "Musco Control System Summary" for electrical sizing.

Installation Requirements: Results assume ± 3% nominal voltage at line side of the driver and structures located within 3 feet (1m) of design locations.



We Make It Happen.

Not to be reproduced in whole or part without the written consent of Musco Sports Lighting, LLC. ©1981, 2019 Musco Sports Lighting, LLC.

ILLUMINATION SUMMARY

EQUIPMENT LIST FOR AREAS SHOWN

Pole				Luminaires					
QTY	LOCATION	SIZE	GRADE ELEVATION	MOUNTING HEIGHT	LUMINAIRE TYPE	QTY / POLE	THIS GRID	OTHER GRIDS	
2	A6-A7	70'	-	15.5'	TLC-BT-575	1	1	0	
				27'	CREE OSQ	1	0	1	
				70'	TLC-LED-1200	2	2	0	
1	B5	80'	-	15.5'	TLC-BT-575	1/1*	1	1	
				27'	CREE OSQ	1	0	1	
				80'	TLC-LED-1200	5/5*	5	5	
1	B6	70'	-	15.5'	TLC-BT-575	1	1	0	
				27'	CREE OSQ	1	0	1	
				70'	TLC-LED-1200	5	5	0	
4	TOTALS						28	18	10

* This structure utilizes a back-to-back mounting configuration

La Puente City Park

La Puente, CA

GRID SUMMARY

Name: Softball 2
Size: 200'/200'/200' - basepath 60'
Spacing: 20.0' x 20.0'
Height: 3.0' above grade

ILLUMINATION SUMMARY

MAINTAINED HORIZONTAL FOOTCANDLES

	Infield	Outfield
Guaranteed Average:	50	30
Scan Average:	50.8	31.2
Maximum:	66	46
Minimum:	34	19
Avg / Min:	1.51	1.67
Guaranteed Max / Min:	2	2.5
Max / Min:	1.96	2.48
UG (adjacent pts):	1.59	1.66
CU:	0.69	
No. of Points:	25	73

LUMINAIRE INFORMATION

Color / CRI: 5700K - 75 CRI
Luminaire Output: 136,000 / 52,000 lumens
No. of Luminaires: 18
Total Load: 18.68 kW

Lumen Maintenance

Luminaire Type	L90 hrs	L80 hrs	L70 hrs
TLC-LED-1200	>81,000	>81,000	>81,000
TLC-BT-575	>81,000	>81,000	>81,000

Reported per TM-21-11. See luminaire datasheet for details.

Guaranteed Performance: The ILLUMINATION described above is guaranteed per your Musco Warranty document and includes a 0.95 dirt depreciation factor.

Field Measurements: Individual field measurements may vary from computer-calculated predictions and should be taken in accordance with IESNA RP-6-15.

Electrical System Requirements: Refer to Amperage Draw Chart and/or the "Musco Control System Summary" for electrical sizing.

Installation Requirements: Results assume ± 3% nominal voltage at line side of the driver and structures located within 3 feet (1m) of design locations.



We Make It Happen.

Not to be reproduced in whole or part without the written consent of Musco Sports Lighting, LLC. ©1981, 2019 Musco Sports Lighting, LLC.

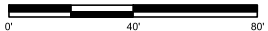
ILLUMINATION SUMMARY



Pole location(s) Ⓢ dimensions are relative to 0,0 reference point(s) ⊗



SCALE IN FEET 1 : 40



ENGINEERED DESIGN By: Isaac Sanders • File #200373-A • 26-Jul-19

A 6x6 grid of numbers is shown. The numbers are arranged as follows:

5	7	10	12	13	12
6	9	12	15	17	15
7	10	13	17	20	17
7	10	13	17	19	16
6	9	12	15	16	15
5	7	9	12	13	11

The center of the grid (the intersection of the 3rd and 4th rows and the 3rd and 4th columns) is marked with a circle and an 'X'. The number 20 in the 3rd row, 5th column is highlighted in green. The number 5 in the 6th row, 1st column is highlighted in red.

Legend:

- 40' (with an arrow pointing right)
- DP1 (with a circle and crosshair)
- 15' (with an arrow pointing up)

ILLUMINATION SUMMARY			
MAINTAINED HORIZONTAL FOOT CANDLES			
Entire Grid			
Scan Average:	11.9		
Maximum:	20		
Minimum:	5		
Avg / Min:	2.32		
Max / Min:	3.82		
UG (adjacent pts):	1.41		
CU:	0.50		
No. of Points:	36		
LUMINAIRE INFORMATION			
Color / CRI:	5700K - 75 CRI		
Luminaire Output:	46,500 lumens		
No. of Luminaires:	2		
Total Load:	0.8 kW		
Lumen Maintenance			
Luminaire Type	L90 hrs	L80 hrs	L70 hrs
TLC-LD-40	>81,000	>81,000	>81,000

Reported per TM-21-11. See luminaire datasheet for details.

Guaranteed Performance: The ILLUMINATION described above is guaranteed per your Musco Warranty document and includes a 0.95 dirt depreciation factor.

Field Measurements: Individual field measurements may vary from computer-calculated predictions and should be taken in accordance with IESNA RP-6-15.

Electrical System Requirements: Refer to Amperage Draw Chart and/or the "Musco Control System Summary" for electrical sizing.

Installation Requirements: Results assume $\pm 3\%$ nominal voltage at line side of the driver and structures located within 3 feet (1m) of design locations.



We Make It Happen.

Not to be reproduced in whole or part without the written consent of Musco Sports Lighting, LLC. ©1981, 2019 Musco Sports Lighting, LLC.

ILLUMINATION SUMMARY

EQUIPMENT LIST FOR AREAS SHOWN								
Pole				Luminaires				
QTY	LOCATION	SIZE	GRADE ELEVATION	MOUNTING HEIGHT	LUMINAIRE TYPE	QTY / POLE	THIS GRID	OTHER GRIDS
2	F1-F2	70'	-	27'	CREE OSQ	1	0	1
				70'	TLC-LED-1200	4/2*	2	4
TOTALS						14	4	10

* This structure utilizes a back-to-back mounting configuration

La Puente City Park
La Puente, CA

GRID SUMMARY	
Name:	V Grid
Size:	65' x 50'
Spacing:	20.0' x 20.0'
Height:	3.0' above grade

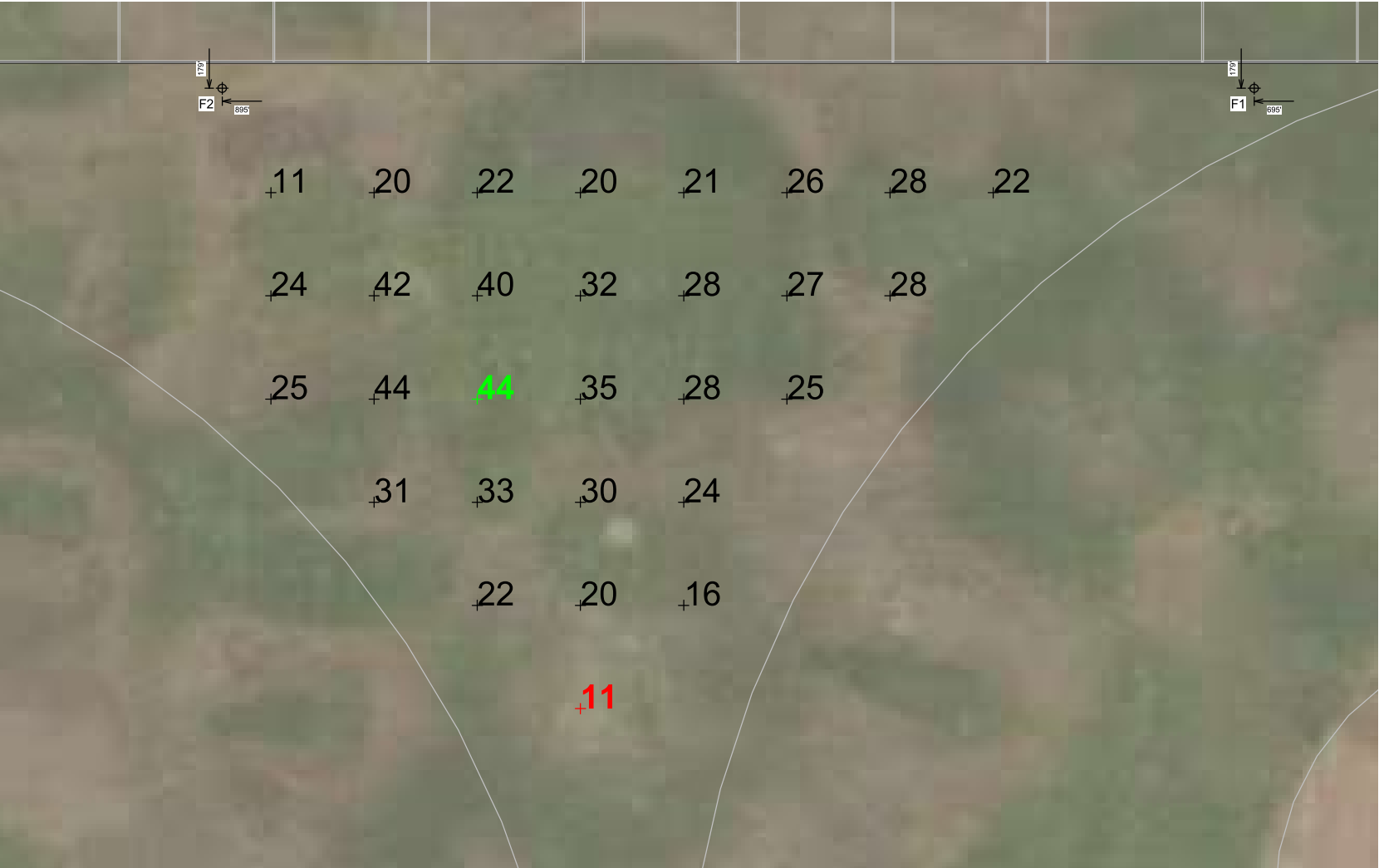
ILLUMINATION SUMMARY			
MAINTAINED HORIZONTAL FOOTCANDLES			
	Entire Grid		
Scan Average:	26.7		
Maximum:	44		
Minimum:	11		
Avg / Min:	2.49		
Max / Min:	4.11		
UG (adjacent pts):	2.20		
CU:	0.58		
No. of Points:	29		
LUMINAIRE INFORMATION			
Color / CRI:	5700K - 75 CRI		
Luminaire Output:	136,000 lumens		
No. of Luminaires:	4		
Total Load:	4.68 kW		
Lumen Maintenance			
Luminaire Type	L90 hrs	L80 hrs	L70 hrs
TLC-LED-1200	>81,000	>81,000	>81,000
Reported per TM-21-11. See luminaire datasheet for details.			

Guaranteed Performance: The ILLUMINATION described above is guaranteed per your Musco Warranty document and includes a 0.95 dirt depreciation factor.

Field Measurements: Individual field measurements may vary from computer-calculated predictions and should be taken in accordance with IESNA RP-6-15.

Electrical System Requirements: Refer to Amperage Draw Chart and/or the "Musco Control System Summary" for electrical sizing.

Installation Requirements: Results assume ± 3% nominal voltage at line side of the driver and structures located within 3 feet (1m) of design locations.



Pole location(s) Ⓢ dimensions are relative to 0,0 reference point(s) ⊗



Not to be reproduced in whole or part without the written consent of Musco Sports Lighting, LLC. ©1981, 2019 Musco Sports Lighting, LLC.

ILLUMINATION SUMMARY

EQUIPMENT LIST FOR AREAS SHOWN								
Pole				Luminaires				
QTY	LOCATION	SIZE	GRADE ELEVATION	MOUNTING HEIGHT	LUMINAIRE TYPE	QTY / POLE	THIS GRID	OTHER GRIDS
1	A5	70'	-	15.5'	TLC-BT-575	1	0	1
				27'	CREE OSQ	1	1	0
				70'	TLC-LED-1200	2	0	2
4	S1-S4	60'	-	27'	CREE OSQ	1	0	1
				60'	TLC-LED-900	2	2	0
5	TOTALS					16	9	7

La Puente City Park
La Puente, CA

GRID SUMMARY			
Name:	Soccer		
Size:	150' x 120'		
Spacing:	20.0' x 20.0'		
Height:	3.0' above grade		
ILLUMINATION SUMMARY			
MAINTAINED HORIZONTAL FOOTCANDLES			
Entire Grid			
Guaranteed Average:	30		
Scan Average:	31.1		
Maximum:	41		
Minimum:	22		
Avg / Min:	1.44		
Guaranteed Max / Min:	2.5		
Max / Min:	1.90		
UG (adjacent pts):	1.80		
CU:	0.79		
No. of Points:	48		
LUMINAIRE INFORMATION			
Color / CRI:	5700K - 70 CRI / 5700K - 75 CRI		
Luminaire Output:	17,000 / 89,600 lumens		
No. of Luminaires:	9		
Total Load:	7.25 kW		
Lumen Maintenance			
Luminaire Type	L90 hrs	L80 hrs	L70 hrs
CREE OSQ	--	--	--
TLC-LED-900	>81,000	>81,000	>81,000
Reported per TM-21-11. See luminaire datasheet for details.			

Guaranteed Performance: The ILLUMINATION described above is guaranteed per your Musco Warranty document and includes a 0.95 dirt depreciation factor.

Field Measurements: Individual field measurements may vary from computer-calculated predictions and should be taken in accordance with IESNA RP-6-15.

Electrical System Requirements: Refer to Amperage Draw Chart and/or the "Musco Control System Summary" for electrical sizing.

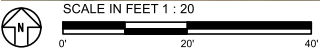
Installation Requirements: Results assume ± 3% nominal voltage at line side of the driver and structures located within 3 feet (1m) of design locations.



We Make It Happen.

Not to be reproduced in whole or part without the written consent of Musco Sports Lighting, LLC. ©1981, 2019 Musco Sports Lighting, LLC.

ILLUMINATION SUMMARY



Pole location(s) dimensions are relative to 0,0 reference point(s)

EQUIPMENT LIST FOR AREAS SHOWN							
Pole			Luminaires				
QTY	LOCATION	SIZE	GRADE ELEVATION	MOUNTING HEIGHT	LUMINAIRE TYPE	QTY / POLE	THIS GRID
1	TB2	50'	-	27'	CREE OSQ	1	0
				50'	TLC-LED-600	4	2
1	TB1	50'	-	27'	CREE OSQ	1	0
				50'	TLC-LED-600	2	2
2	TOTALS					8	4

La Puente City Park

La Puente, CA

GRID SUMMARY	
Name:	Tee Ball 1
Size:	60' x 60'
Spacing:	10.0' x 10.0'
Height:	3.0' above grade

ILLUMINATION SUMMARY	
MAINTAINED HORIZONTAL FOOTCANDLES	
Entire Grid	
Guaranteed Average:	30
Scan Average:	36.4
Maximum:	44
Minimum:	24
Avg / Min:	1.53
Guaranteed Max / Min:	2
Max / Min:	1.83
UG (adjacent pts):	1.27
CU:	0.51
No. of Points:	36

LUMINAIRE INFORMATION	
Color / CRI:	5700K - 75 CRI
Luminaire Output:	65,600 lumens
No. of Luminaires:	4
Total Load:	2.32 kW

Lumen Maintenance			
Luminaire Type	L90 hrs	L80 hrs	L70 hrs
TLC-LED-600	>81,000	>81,000	>81,000

Reported per TM-21-11. See luminaire datasheet for details.



Pole location(s) Ⓢ dimensions are relative to 0,0 reference point(s) ⊗

We Make It Happen.

Not to be reproduced in whole or part without the written consent of Musco Sports Lighting, LLC. ©1981, 2019 Musco Sports Lighting, LLC.

ILLUMINATION SUMMARY

EQUIPMENT LIST FOR AREAS SHOWN								
Pole				Luminaires				
QTY	LOCATION	SIZE	GRADE ELEVATION	MOUNTING HEIGHT	LUMINAIRE TYPE	QTY / POLE	THIS GRID	OTHER GRIDS
1	TB2	50'	-	27'	CREE OSQ	1	0	1
				50'	TLC-LED-600	4	2	2
1	TB3	50'	-	27'	CREE OSQ	1	0	1
				50'	TLC-LED-600	2	2	0
2	TOTALS					8	4	4

La Puente City Park

La Puente, CA

GRID SUMMARY

Name: Tee Ball 2
Size: 60' x 60'
Spacing: 10.0' x 10.0'
Height: 3.0' above grade

ILLUMINATION SUMMARY

MAINTAINED HORIZONTAL FOOTCANDLES

Entire Grid	
Guaranteed Average:	30
Scan Average:	35.4
Maximum:	42
Minimum:	24
Avg / Min:	1.50
Guaranteed Max / Min:	2
Max / Min:	1.79
UG (adjacent pts):	1.24
CU:	0.50
No. of Points:	36

LUMINAIRE INFORMATION

Color / CRI: 5700K - 75 CRI
Luminaire Output: 65,600 lumens
No. of Luminaires: 4
Total Load: 2.32 kW

Luminaire Type	L90 hrs	L80 hrs	L70 hrs
TLC-LED-600	>81,000	>81,000	>81,000

Reported per TM-21-11. See luminaire datasheet for details.



Guaranteed Performance: The ILLUMINATION described above is guaranteed per your Musco Warranty document and includes a 0.95 dirt depreciation factor.

Field Measurements: Individual field measurements may vary from computer-calculated predictions and should be taken in accordance with IESNA RP-6-15.

Electrical System Requirements: Refer to Amperage Draw Chart and/or the "Musco Control System Summary" for electrical sizing.

Installation Requirements: Results assume ± 3% nominal voltage at line side of the driver and structures located within 3 feet (1m) of design locations.



We Make It Happen.

Not to be reproduced in whole or part without the written consent of Musco Sports Lighting, LLC. ©1981, 2019 Musco Sports Lighting, LLC.

ILLUMINATION SUMMARY

EQUIPMENT LIST FOR AREAS SHOWN								
Pole				Luminaires				
QTY	LOCATION	SIZE	GRADE ELEVATION	MOUNTING HEIGHT	LUMINAIRE TYPE	QTY / POLE	THIS GRID	OTHER GRIDS
1	B4	70'	-	15.5'	TLC-BT-575	1	0	1
				27'	CREE OSQ	1	0	1
				70'	TLC-LED-1200	5/1*	1	5
1	TOTALS					8	1	7

* This structure utilizes a back-to-back mounting configuration



ENGINEERED DESIGN By: Isaac Sanders • File #200373-A • 26-Jul-19

La Puente City Park

La Puente, CA

GRID SUMMARY	
Name:	Cheer Area
Size:	40' x 140'
Spacing:	20.0' x 20.0'
Height:	3.0' above grade

ILLUMINATION SUMMARY			
MAINTAINED HORIZONTAL FOOTCANDLES			
	Entire Grid		
Scan Average:	17.2		
Maximum:	32		
Minimum:	5		
Avg / Min:	3.77		
Max / Min:	7.10		
UG (adjacent pts):	3.95		
CU:	0.62		
No. of Points:	12		
LUMINAIRE INFORMATION			
Color / CRI:	5700K - 75 CRI		
Luminaire Output:	136,000 lumens		
No. of Luminaires:	1		
Total Load:	1.17 kW		
Lumen Maintenance			
Luminaire Type	L90 hrs	L80 hrs	L70 hrs
TLC-LED-1200	>81,000	>81,000	>81,000
Reported per TM-21-11. See luminaire datasheet for details.			

Guaranteed Performance: The ILLUMINATION described above is guaranteed per your Musco Warranty document and includes a 0.95 dirt depreciation factor.

Field Measurements: Individual field measurements may vary from computer-calculated predictions and should be taken in accordance with IESNA RP-6-15.

Electrical System Requirements: Refer to Amperage Draw Chart and/or the "Musco Control System Summary" for electrical sizing.

Installation Requirements: Results assume ± 3% nominal voltage at line side of the driver and structures located within 3 feet (1m) of design locations.



Not to be reproduced in whole or part without the written consent of Musco Sports Lighting, LLC. ©1981, 2019 Musco Sports Lighting, LLC.

ILLUMINATION SUMMARY

EQUIPMENT LIST FOR AREAS SHOWN										
Pole				Luminaires						
QTY	LOCATION	SIZE	GRADE ELEVATION	MOUNTING HEIGHT	LUMINAIRE TYPE	QTY	POLE	GRID	OTHER GRID	OTHER GRID
1	A1	70'	-	15.5'	TLC-BT-575	1/1*	2	0	0	0
				27'	OREE OSQ	1/1*	2	0	0	0
				70'	TLC-LED-1200	2/2*	4	0	0	0
1	A2	70'	-	15.5'	TLC-BT-575	1	1	0	0	0
				27'	OREE OSQ	1/1*	2	0	0	0
				70'	TLC-LED-1200	2/4*	6	0	0	0
1	A3	70'	-	15.5'	TLC-BT-575	1	1	0	0	0
				27'	OREE OSQ	1/1*	2	0	0	0
				70'	TLC-LED-1200	2	2	0	0	0
4	A4-A7	70'	-	15.5'	TLC-BT-575	1	1	0	0	0
				27'	OREE OSQ	1	1	0	0	0
				70'	TLC-LED-1200	2	2	0	0	0
1	B1	80'	-	15.5'	TLC-BT-575	2	2	0	0	0
				27'	OREE OSQ	1	1	0	0	0
				80'	TLC-LED-1200	9	9	0	0	0
1	B2	80'	-	15.5'	TLC-BT-575	1	1	0	0	0
				27'	OREE OSQ	1	1	0	0	0
				80'	TLC-LED-1200	5	5	0	0	0
1	B3	80'	-	15.5'	TLC-BT-575	1	1	0	0	0
				27'	OREE OSQ	1/1*	2	0	0	0
				80'	TLC-LED-1200	5/4*	9	0	0	0
1	B4	70'	-	15.5'	TLC-BT-575	1	1	0	0	0
				27'	OREE OSQ	1	1	0	0	0
				70'	TLC-LED-1200	5/1*	6	0	0	0
1	B5	80'	-	15.5'	TLC-BT-575	1/1*	2	0	0	0
				27'	OREE OSQ	1	1	0	0	0
				80'	TLC-LED-1200	5/5*	10	0	0	0
1	B6	70'	-	15.5'	TLC-BT-575	1	1	0	0	0
				27'	OREE OSQ	1	1	0	0	0
				70'	TLC-LED-1200	5	5	0	0	0
1	DP1	50'	-	27'	OREE OSQ	1	1	0	0	0
				50'	TLC-LED-400	2	2	0	0	0
2	F1-F2	70'	-	27'	OREE OSQ	2	1	0	0	0
				70'	TLC-LED-1200	4/2*	6	0	0	0
4	S1-S4	60'	-	27'	OREE OSQ	1	1	0	0	0
				60'	TLC-LED-900	2	2	0	0	0
1	TB2	50'	-	27'	OREE OSQ	1	1	0	0	0
				50'	TLC-LED-600	4	4	0	0	0
2	TB1, TB3	50'	-	27'	OREE OSQ	1	1	0	0	0
				50'	TLC-LED-600	2	2	0	0	0
23	TOTALS					137	137	0	0	0

* This structure utilizes a back-to-back mounting configuration



La Puente City Park
La Puente, CA

GRID SUMMARY	
Name:	Near Side Temple Ave.
Spacing:	30.0'
Height:	3.0' above grade

ILLUMINATION SUMMARY	
HORIZONTAL FOOT CANDLES	
Entire Grid	
Guaranteed Average:	5
Scan Average:	1.427
Maximum:	6.11
Minimum:	0.00
No. of Points:	39

LUMINAIRE INFORMATION	
Color / CRI:	5700K - 75 CRI / 5700K - 70 CRI / 5700K - 75 CRI / 5
Luminaire Output:	136,000 / 65,600 / 17,000 / 52,000 / 89,600 / 46,500
No. of Luminaires:	137
Total Load:	114.19 kW

Lumen Maintenance			
Luminaire Type	L80 hrs	L80 hrs	L70 hrs
TLC-LED-1200	>81,000	>81,000	>81,000
TLC-LED-600	>81,000	>81,000	>81,000
TLC-BT-575	>81,000	>81,000	>81,000
TLC-LED-900	>81,000	>81,000	>81,000
TLC-LED-400	>81,000	>81,000	>81,000
OREE OSQ	---	---	---

Reported per TM-21-11. See luminaire datasheet for details.

Guaranteed Performance: The ILLUMINATION described above is guaranteed per your Musco Warranty document.

Field Measurements: Individual field measurements may vary from computer-calculated predictions and should be taken in accordance with IESNA RP-6-15.

Electrical System Requirements: Refer to Amperage Draw Chart and/or the "Musco Control System Summary" for electrical sizing.

Installation Requirements: Results assume ± 3% nominal voltage at line side of the driver and structures located within 3 feet (1m) of design locations.



EQUIPMENT LIST FOR AREAS SHOWN										
Pole				Luminaires						
QTY	LOCATION	SIZE	GRADE ELEVATION	MOUNTING HEIGHT	LUMINAIRE TYPE	QTY	POLE	GRID	GRID	OTHER GRID
1	A1	70'	-	15.5'	TLC-BT-575	1/1*	1	1	0	0
				27'	OREE OSQ	1/1*	2	0	0	0
1	A2	70'	-	15.5'	TLC-LED-1200	2/2*	4	0	0	0
				27'	OREE OSQ	1	1	0	0	0
				27'	OREE OSQ	1/1*	2	0	0	0
1	A3	70'	-	15.5'	TLC-BT-575	1	1	0	0	0
				27'	TLC-LED-1200	2/4*	6	0	0	0
				27'	OREE OSQ	1/1*	2	0	0	0
4	A4-A7	70'	-	15.5'	TLC-BT-575	2	2	0	0	0
				27'	OREE OSQ	1	1	0	0	0
				27'	TLC-LED-1200	2	2	0	0	0
1	B1	80'	-	15.5'	TLC-BT-575	2	2	0	0	0
				27'	OREE OSQ	1	1	0	0	0
				80'	TLC-LED-1200	9	9	0	0	0
1	B2	80'	-	15.5'	TLC-BT-575	1	1	0	0	0
				27'	OREE OSQ	1	1	0	0	0
				80'	TLC-LED-1200	5	5	0	0	0
1	B3	80'	-	15.5'	TLC-BT-575	1	1	0	0	0
				27'	OREE OSQ	1/1*	2	0	0	0
				80'	TLC-LED-1200	5/4*	9	0	0	0
1	B4	70'	-	15.5'	TLC-BT-575	1	1	0	0	0
				27'	OREE OSQ	1	1	0	0	0
				70'	TLC-LED-1200	5/1*	6	0	0	0
1	B5	80'	-	15.5'	TLC-BT-575	1/1*	2	0	0	0
				27'	OREE OSQ	1	1	0	0	0
				80'	TLC-LED-1200	5/5*	10	0	0	0
1	B6	70'	-	15.5'	TLC-BT-575	1	1	0	0	0
				27'	OREE OSQ	1	1	0	0	0
				70'	TLC-LED-1200	5	5	0	0	0
1	DP1	50'	-	27'	OREE OSQ	1	1	0	0	0
				50'	TLC-LED-400	2	2	0	0	0
2	F1-F2	70'	-	27'	OREE OSQ	2	1	0	0	0
				70'	TLC-LED-1200	4/2*	6	0	0	0
4	S1-S4	60'	-	27'	OREE OSQ	1	1	0	0	0
				60'	TLC-LED-900	2	2	0	0	0
1	TB2	50'	-	27'	OREE OSQ	1	1	0	0	0
				60'	TLC-LED-600	4	4	0	0	0
2	TB1, TB3	50'	-	27'	OREE OSQ	1	1	0	0	0
				50'	TLC-LED-600	2	2	0	0	0
23	TOTALS					137	137	0	0	0

* This structure utilizes a back-to-back mounting configuration



La Puente City Park

La Puente, CA

GRID SUMMARY

Name: Near Side Temple Ave.

Spacing: 30.0'

Height: 3.0' above grade

ILLUMINATION SUMMARY

MAX VERTICAL FOOTCANDLES

Entire Grid

Scan Average: 2.210

Maximum: 8.90

Minimum: 0.00

No. of Points: 39

LUMINAIRE INFORMATION

Color / CRI: 5700K - 75 CRI / 5700K - 70 CRI / 5700K - 75 CRI / 5

Luminaire Output: 136,000 / 65,600 / 17,000 / 52,000 / 89,600 / 46,500

No. of Luminaires: 137

Total Load: 114.19 kW

Lumen Maintenance			
Luminaire Type	L90 hrs	L80 hrs	L70 hrs
TLC-LED-1200	>81,000	>81,000	>81,000
TLC-LED-600	>81,000	>81,000	>81,000
OREE OSQ	---	---	---
TLC-BT-575	>81,000	>81,000	>81,000
TLC-LED-900	>81,000	>81,000	>81,000
TLC-LED-400	>81,000	>81,000	>81,000

Reported per TM-21-11. See luminaire datasheet for details.

Guaranteed Performance: The ILLUMINATION described above is guaranteed per your Musco Warranty document.

Field Measurements: Individual field measurements may vary from computer-calculated predictions and should be taken in accordance with IESNA RP-6-15.

Electrical System Requirements: Refer to Amperage Draw Chart and/or the "Musco Control System Summary" for electrical sizing.

Installation Requirements: Results assume ± 3% nominal voltage at line side of the driver and structures located within 3 feet (1m) of design locations.



EQUIPMENT LIST FOR AREAS SHOWN									
Pole				Luminaires					
QTY	LOCATION	SIZE	GRADE ELEVATION	MOUNTING HEIGHT	LUMINAIRE TYPE	QTY	POLE	FIN	OTHER
								GRID	GRID
1	A1	70'	-	15.5'	TLC-BT-575	1/1*	1	0	0
				27'	OREE OSQ	1/1*	2	0	0
				70'	TLC-LED-1200	2/2*	4	0	0
1	A2	70'	-	15.5'	TLC-BT-575	1	1	0	0
				27'	OREE OSQ	1/1*	2	0	0
				70'	TLC-LED-1200	2/4*	6	0	0
1	A3	70'	-	15.5'	TLC-BT-575	1	1	0	0
				27'	OREE OSQ	1/1*	2	0	0
				70'	TLC-LED-1200	2	2	0	0
4	A4-A7	70'	-	15.5'	TLC-BT-575	1	1	0	0
				27'	OREE OSQ	1	1	0	0
				70'	TLC-LED-1200	2	2	0	0
1	B1	80'	-	15.5'	TLC-BT-575	2	2	0	0
				27'	OREE OSQ	1	1	0	0
				80'	TLC-LED-1200	9	9	0	0
1	B2	80'	-	15.5'	TLC-BT-575	1	1	0	0
				27'	OREE OSQ	1	1	0	0
				80'	TLC-LED-1200	5	5	0	0
1	B3	80'	-	15.5'	TLC-BT-575	1	1	0	0
				27'	OREE OSQ	1/1*	2	0	0
				80'	TLC-LED-1200	5/4*	9	0	0
1	B4	70'	-	15.5'	TLC-BT-575	1	1	0	0
				27'	OREE OSQ	1	1	0	0
				70'	TLC-LED-1200	5/1*	6	0	0
1	B5	80'	-	15.5'	TLC-BT-575	1/1*	2	0	0
				27'	OREE OSQ	1	1	0	0
				80'	TLC-LED-1200	5/5*	10	0	0
1	B6	70'	-	15.5'	TLC-BT-575	1	1	0	0
				27'	OREE OSQ	1	1	0	0
				70'	TLC-LED-1200	5	5	0	0
1	DP1	50'	-	27'	OREE OSQ	1	1	0	0
				50'	TLC-LED-400	2	2	0	0
2	F1-F2	70'	-	27'	OREE OSQ	2	1	0	0
				70'	TLC-LED-1200	4/2*	6	0	0
4	S1-S4	60'	-	27'	OREE OSQ	1	1	0	0
				60'	TLC-LED-900	2	2	0	0
1	TB2	50'	-	27'	OREE OSQ	1	1	0	0
				50'	TLC-LED-600	4	4	0	0
2	TB1, TB3	50'	-	27'	OREE OSQ	1	1	0	0
				50'	TLC-LED-600	2	2	0	0
23	TOTALS					137	137	0	0

* This structure utilizes a back-to-back mounting configuration



GRID SUMMARY	
Name:	Far side Temple Ave.
Spacing:	30.0'
Height:	3.0' above grade

ILLUMINATION SUMMARY	
HORIZONTAL FOOTCANDLES	
Entire Grid	
Scan Average:	0.078
Maximum:	0.36
Minimum:	0.00
No. of Points:	38

LUMINAIRE INFORMATION	
Color / CRI:	5700K - 75 CRI / 5700K - 70 CRI / 5700K - 75 CRI / 5
Luminaire Output:	136,000 / 65,600 / 17,000 / 52,000 / 89,600 / 46,500
No. of Luminaires:	137
Total Load:	114.19 kW

Lumen Maintenance			
Luminaire Type	L90 hrs	L80 hrs	L70 hrs
TLC-LED-1200	>81,000	>81,000	>81,000
TLC-LED-600	>81,000	>81,000	>81,000
OREE OSQ	---	---	---
TLC-BT-575	>81,000	>81,000	>81,000
TLC-LED-900	>81,000	>81,000	>81,000
TLC-LED-400	>81,000	>81,000	>81,000

Reported per TM-21-11. See luminaire datasheet for details.

Guaranteed Performance: The ILLUMINATION described above is guaranteed per your Musco Warranty document.

Field Measurements: Individual field measurements may vary from computer-calculated predictions and should be taken in accordance with IESNA RP-6-15.

Electrical System Requirements: Refer to Amperage Draw Chart and/or the "Musco Control System Summary" for electrical sizing.

Installation Requirements: Results assume ± 3% nominal voltage at line side of the driver and structures located within 3 feet (1m) of design locations.

EQUIPMENT LIST FOR AREAS SHOWN										
Pole				Luminaires						
QTY	LOCATION	SIZE	GRADE ELEVATION	MOUNTING HEIGHT	LUMINAIRE TYPE	QTY	POLE	FIN	GRID	OTHER GRID
1	A1	70'		15.5'	TLC-BT-575	1/1*	1	2	0	0
				27'	OREE OSG	1/1*	2	0	0	
				70'	TLC-LED-1200	2/2*	4	0	0	
1	A2	70'		15.5'	TLC-BT-575	1/1*	1	1	0	0
				27'	OREE OSG	1/1*	2	0	0	
				70'	TLC-LED-1200	2/4*	6	0	0	
1	A3	70'		15.5'	TLC-BT-575	1/1*	1	1	0	0
				27'	OREE OSG	1/1*	2	0	0	
				70'	TLC-LED-1200	2	2	0	0	
4	A4-A7	70'		15.5'	TLC-BT-575	1	1	1	0	0
				27'	OREE OSG	1	1	0	0	
				70'	TLC-LED-1200	2	2	0	0	
1	B1	80'		15.5'	TLC-BT-575	2	2	0	0	0
				27'	OREE OSG	1	1	0	0	
				80'	TLC-LED-1200	9	9	0	0	
1	B2	80'		15.5'	TLC-BT-575	1	1	1	0	0
				27'	OREE OSG	1	1	0	0	
				80'	TLC-LED-1200	5	5	0	0	
1	B3	80'		15.5'	TLC-BT-575	1	1	0	0	0
				27'	OREE OSG	1/1*	2	0	0	
				80'	TLC-LED-1200	5/4*	9	0	0	
1	B4	70'		15.5'	TLC-BT-575	1	1	0	0	0
				27'	OREE OSG	1	1	0	0	
				70'	TLC-LED-1200	5/1*	6	0	0	
1	B5	80'		15.5'	TLC-BT-575	1/1*	2	0	0	0
				27'	OREE OSG	1	1	0	0	
				80'	TLC-LED-1200	5/5*	10	0	0	
1	B6	70'		15.5'	TLC-BT-575	1	1	0	0	0
				27'	OREE OSG	1	1	0	0	
				70'	TLC-LED-1200	5	5	0	0	
1	DP1	50'		27'	OREE OSG	1	1	0	0	0
				50'	TLC-LED-400	2	2	0	0	
				70'	TLC-LED-1200	4/2*	6	0	0	
2	F1-F2	70'		27'	OREE OSG	1	1	0	0	0
				70'	TLC-LED-1200	4/2*	6	0	0	
				27'	OREE OSG	1	1	0	0	
4	S1-S4	60'		60'	TLC-LED-900	2	2	0	0	0
				27'	OREE OSG	1	1	0	0	
				60'	TLC-LED-600	4	4	0	0	
1	TB2	50'		27'	OREE OSG	1	1	0	0	0
				50'	TLC-LED-400	2	2	0	0	
				70'	TLC-LED-1200	4	4	0	0	
2	TB1, TB3	50'		27'	OREE OSG	1	1	0	0	0
				50'	TLC-LED-400	2	2	0	0	
				TOTALS						137

* This structure utilizes a back-to-back mounting configuration



GRID SUMMARY	
Name:	Far side Temple Ave.
Spacing:	30.0'
Height:	3.0' above grade

ILLUMINATION SUMMARY	
MAX VERTICAL FOOTCANDLES:	Entire Grid
Scan Average:	0.172
Maximum:	0.70
Minimum:	0.00
No. of Points:	38

LUMINAIRE INFORMATION	
Color / CRI:	5700K - 75 CRI / 5700K - 70 CRI / 5700K - 75 CRI / 5
Luminaire Output:	136,000 / 65,600 / 17,000 / 52,000 / 89,600 / 46,500
No. of Luminaires:	137
Total Load:	114.19 kW

Lumen Maintenance			
Luminaire Type	L90 hrs	L80 hrs	L70 hrs
TLC-LED-1200	>81,000	>81,000	>81,000
TLC-LED-600	>81,000	>81,000	>81,000
OREE OSG	---	---	---
TLC-BT-575	>81,000	>81,000	>81,000
TLC-LED-900	>81,000	>81,000	>81,000
TLC-LED-400	>81,000	>81,000	>81,000

Reported per TM-21-11. See luminaire data sheet for details.

Guaranteed Performance: The ILLUMINATION described above is guaranteed per your Musco Warranty document.

Field Measurements: Individual field measurements may vary from computer-calculated predictions and should be taken in accordance with IESNA RP-6-15.

Electrical System Requirements: Refer to Amperage Draw Chart and/or the "Musco Control System Summary" for electrical sizing.

Installation Requirements: Results assume ± 3% nominal voltage at line side of the driver and structures located within 3 feet (1m) of design locations.

EQUIPMENT LIST FOR AREAS SHOWN									
Pole				Luminaires					
QTY	LOCATION	SIZE	GRADE ELEVATION	MOUNTING HEIGHT	LUMINAIRE TYPE	QTY	POLE	FIN GRID	OTHER GRID
1	A1	70'	-	15.5'	TLC-BT-575	1/1*	2	0	0
				27'	OREE OSQ	1/1*	2	0	0
				70'	TLC-LED-1200	2/2*	4	0	0
1	A2	70'	-	15.5'	TLC-BT-575	1	1	0	0
				27'	OREE OSQ	1/1*	2	0	0
				70'	TLC-LED-1200	2/4*	6	0	0
1	A3	70'	-	15.5'	TLC-BT-575	1	1	0	0
				27'	OREE OSQ	1/1*	2	0	0
				70'	TLC-LED-1200	2	2	0	0
4	A4-A7	70'	-	15.5'	TLC-BT-575	1	1	0	0
				27'	OREE OSQ	1	1	0	0
				70'	TLC-LED-1200	2	2	0	0
1	B1	80'	-	15.5'	TLC-BT-575	2	2	0	0
				27'	OREE OSQ	1	1	0	0
				80'	TLC-LED-1200	9	9	0	0
1	B2	80'	-	15.5'	TLC-BT-575	1	1	0	0
				27'	OREE OSQ	1	1	0	0
				80'	TLC-LED-1200	5	5	0	0
1	B3	80'	-	15.5'	TLC-BT-575	1	1	0	0
				27'	OREE OSQ	1/1*	2	0	0
				80'	TLC-LED-1200	5/4*	9	0	0
1	B4	70'	-	15.5'	TLC-BT-575	1	1	0	0
				27'	OREE OSQ	1	1	0	0
				70'	TLC-LED-1200	5/1*	6	0	0
1	B5	80'	-	15.5'	TLC-BT-575	1/1*	2	0	0
				27'	OREE OSQ	1	1	0	0
				80'	TLC-LED-1200	5/5*	10	0	0
1	B6	70'	-	15.5'	TLC-BT-575	1	1	0	0
				27'	OREE OSQ	1	1	0	0
				70'	TLC-LED-1200	5	5	0	0
1	DP1	50'	-	27'	OREE OSQ	1	1	0	0
				50'	TLC-LED-400	2	2	0	0
2	F1-F2	70'	-	27'	OREE OSQ	1	1	0	0
				70'	TLC-LED-1200	4/2*	6	0	0
4	S1-S4	60'	-	27'	OREE OSQ	1	1	0	0
				60'	TLC-LED-900	2	2	0	0
1	TB2	50'	-	27'	OREE OSQ	1	1	0	0
				50'	TLC-LED-600	4	4	0	0
2	TB1, TB3	50'	-	27'	OREE OSQ	1	1	0	0
				50'	TLC-LED-600	2	2	0	0
23	TOTALS						137	137	0

* This structure utilizes a back-to-back mounting configuration



La Puente City Park

La Puente, CA

GRID SUMMARY	
Name:	West Spill
Spacing:	30.0'
Height:	3.0' above grade

ILLUMINATION SUMMARY	
HORIZONTAL FOOT CANDLES:	
Entire Grid	
Scan Average:	0.050
Maximum:	0.24
Minimum:	0.00
No. of Points:	30

LUMINAIRE INFORMATION	
Color / CRI:	5700K - 75 CRI / 5700K - 70 CRI / 5700K - 75 CRI / 5
Luminaire Output:	136,000 / 65,600 / 17,000 / 52,000 / 89,600 / 46,500
No. of Luminaires:	137
Total Load:	114.19 kW

Lumen Maintenance				
Luminaire Type	L90 hrs	L80 hrs	L70 hrs	
TLC-LED-1200	>81,000	>81,000	>81,000	
TLC-LED-600	>81,000	>81,000	>81,000	
OREE OSQ				
TLC-BT-575	>81,000	>81,000	>81,000	
TLC-LED-900	>81,000	>81,000	>81,000	
TLC-LED-400	>81,000	>81,000	>81,000	

Reported per TM-21-11. See luminaire data sheet for details.

Guaranteed Performance: The ILLUMINATION described above is guaranteed per your Musco Warranty document.

Field Measurements: Individual field measurements may vary from computer-calculated predictions and should be taken in accordance with IESNA RP-6-15.

Electrical System Requirements: Refer to Amperage Draw Chart and/or the "Musco Control System Summary" for electrical sizing.

Installation Requirements: Results assume ± 3% nominal voltage at line side of the driver and structures located within 3 feet (1m) of design locations.

EQUIPMENT LIST FOR AREAS SHOWN									
Pole				Luminaires					
QTY	LOCATION	SIZE	GRADE ELEVATION	MOUNTING HEIGHT	LUMINAIRE TYPE	QTY	POLE	FIN GRID	OTHER GRID
1	A1	70'	-	15.5'	TLC-BT-575	1/1*	2	0	0
				27'	OREE OSQ	1/1*	2	0	0
				70'	TLC-LED-1200	2/2*	4	0	0
1	A2	70'	-	15.5'	TLC-BT-575	1	1	0	0
				27'	OREE OSQ	1/1*	2	0	0
				70'	TLC-LED-1200	2/4*	6	0	0
1	A3	70'	-	15.5'	TLC-BT-575	1	1	0	0
				27'	OREE OSQ	1/1*	2	0	0
				70'	TLC-LED-1200	2	2	0	0
4	A4-A7	70'	-	15.5'	TLC-BT-575	1	1	0	0
				27'	OREE OSQ	1	1	0	0
				70'	TLC-LED-1200	2	2	0	0
1	B1	80'	-	15.5'	TLC-BT-575	2	2	0	0
				27'	OREE OSQ	1	1	0	0
				80'	TLC-LED-1200	9	9	0	0
1	B2	80'	-	15.5'	TLC-BT-575	1	1	0	0
				27'	OREE OSQ	1	1	0	0
				80'	TLC-LED-1200	5	5	0	0
1	B3	80'	-	15.5'	TLC-BT-575	1	1	0	0
				27'	OREE OSQ	1/1*	2	0	0
				80'	TLC-LED-1200	5/4*	9	0	0
1	B4	70'	-	15.5'	TLC-BT-575	1	1	0	0
				27'	OREE OSQ	1	1	0	0
				70'	TLC-LED-1200	5/1*	6	0	0
1	B5	80'	-	15.5'	TLC-BT-575	1/1*	2	0	0
				27'	OREE OSQ	1	1	0	0
				80'	TLC-LED-1200	5/5*	10	0	0
1	B6	70'	-	15.5'	TLC-BT-575	1	1	0	0
				27'	OREE OSQ	1	1	0	0
				70'	TLC-LED-1200	5	5	0	0
1	DP1	50'	-	27'	OREE OSQ	1	1	0	0
				50'	TLC-LED-400	2	2	0	0
2	F1-F2	70'	-	27'	OREE OSQ	1	1	0	0
				70'	TLC-LED-1200	4/2*	6	0	0
4	S1-S4	60'	-	27'	OREE OSQ	1	1	0	0
				60'	TLC-LED-900	2	2	0	0
1	TB2	50'	-	27'	OREE OSQ	1	1	0	0
				50'	TLC-LED-600	4	4	0	0
2	TB1, TB3	50'	-	27'	OREE OSQ	1	1	0	0
				50'	TLC-LED-600	2	2	0	0
28	TOTALS					137	137	0	0

* This structure utilizes a back-to-back mounting configuration



La Puente City Park

La Puente, CA

GRID SUMMARY	
Name:	West Spill
Spacing:	30.0'
Height:	3.0' above grade

ILLUMINATION SUMMARY	
MAX VERTICAL FOOTCANDLES:	Entire Grid
Scan Average:	0.155
Maximum:	0.60
Minimum:	0.01
No. of Points:	30

LUMINAIRE INFORMATION	
Color / CRI:	5700K - 75 CRI / 5700K - 70 CRI / 5700K - 75 CRI / 5
Luminaire Output:	136,000 / 65,600 / 17,000 / 52,000 / 89,600 / 46,500
No. of Luminaires:	137
Total Load:	114.19 kW

Lumen Maintenance				
Luminaire Type	L90 hrs	L80 hrs	L70 hrs	
TLC-LED-1200	>81,000	>81,000	>81,000	
TLC-LED-600	>81,000	>81,000	>81,000	
OREE OSQ				
TLC-BT-575	>81,000	>81,000	>81,000	
TLC-LED-900	>81,000	>81,000	>81,000	
TLC-LED-400	>81,000	>81,000	>81,000	

Reported per TM-21-11. See luminaire data sheet for details.

Guaranteed Performance: The ILLUMINATION described above is guaranteed per your Musco Warranty document.

Field Measurements: Individual field measurements may vary from computer-calculated predictions and should be taken in accordance with IESNA RP-6-15.

Electrical System Requirements: Refer to Amperage Draw Chart and/or the "Musco Control System Summary" for electrical sizing.

Installation Requirements: Results assume ± 3% nominal voltage at line side of the driver and structures located within 3 feet (1m) of design locations.



La Puente City Park
La Puente, CA

EQUIPMENT LAYOUT	
INCLUDES:	
- Cheer Area	
- Dog Park	
- Football	
- LL 2	
- LL 1	
- Soccer	
- Softball 1	
- Softball 2	
- Tee Ball 1	
- Tee Ball 2	

Electrical System Requirements: Refer to Amperage Draw Chart and/or the "Musco Control System Summary" for electrical sizing.
Installation Requirements: Results assume ± 3% nominal voltage at line side of the driver and structures located within 3 feet (1m) of design locations.

EQUIPMENT LIST FOR AREAS SHOWN									
QTY	LOCATION	WGL	GRADE ELEVATION	MOUNTING HEIGHT	POLE TYPE	LUMINAIRE TYPE	LUMINAIRE	WATT	WATT
1	A1	70	-	15.5'	TLC-BT-575	TLC-BT-575	1/1"	1	1
1	A2	70	-	27	TLC-BT-575	TLC-BT-575	1/1"	1	1
1	A3	70	-	27	TLC-BT-575	TLC-BT-575	1/1"	1	1
4	A4-A7	70	-	27	TLC-BT-575	TLC-BT-575	1/1"	1	1
1	B1	80	-	27	TLC-BT-575	TLC-BT-575	1/1"	1	1
1	B2	80	-	27	TLC-BT-575	TLC-BT-575	1/1"	1	1
1	B3	80	-	27	TLC-BT-575	TLC-BT-575	1/1"	1	1
1	B4	70	-	27	TLC-BT-575	TLC-BT-575	1/1"	1	1
1	B5	80	-	27	TLC-BT-575	TLC-BT-575	1/1"	1	1
1	B6	70	-	27	TLC-BT-575	TLC-BT-575	1/1"	1	1
1	DP1	50	-	27	TLC-BT-575	TLC-BT-575	1/1"	1	1
2	F1-F2	70	-	27	TLC-BT-575	TLC-BT-575	1/1"	1	1
4	S1-S4	60	-	27	TLC-BT-575	TLC-BT-575	1/1"	1	1
1	TB1	50	-	27	TLC-BT-575	TLC-BT-575	1/1"	1	1
2	TB2, TB3	50	-	27	TLC-BT-575	TLC-BT-575	1/1"	1	1
23	TOTALS								137

SINGLE LUMINAIRE AMPERAGE DRAW CHART									
Ballast Specifications		Line Amperage Per Luminaire							
(50 min power factor)		(max draw)							
Single Phase Voltage		208	220	240	277	347	380	480	
		(V)	(V)	(V)	(V)	(V)	(V)	(V)	
TLC-LED-1200		7.0	6.6	6.1	5.2	4.2	3.8	3.0	
TLC-LED-600-A		3.4	3.2	3.0	2.6	2.0	1.9	1.5	
CREE OSQ		-	-	-	-	0.4	0.3		
TLC-BT-575		3.4	3.2	2.9	2.5	2.0	1.8	1.5	
TLC-LED-900-A		5.3	5.0	4.6	4.0	3.2	2.9	2.3	
TLC-LED-400-A		2.3	2.2	2.0	1.7	1.4	1.3	1.0	