



## Preliminary Arborist Report

---

### **Mountain View Transit Center Grade Separation & Access Project Mountain View, CA**

**PREPARED FOR  
Kimley-Horn & Associates  
555 Capitol Mall, Suite 300  
Sacramento, CA 95814**

**PREPARED BY:  
HortScience | Bartlett Consulting  
325 Ray St.  
Pleasanton, CA 94566**

**October 16, 2019**



**HORT SCIENCE**  
**BARTLETT CONSULTING**  
Divisions of The F.A. Bartlett Tree Expert Company

**Preliminary Arborist Report  
MVTC Grade Separation & Access Project  
Mountain View, CA**

**Table of Contents**

---

	<b>Page</b>
Introduction and Overview	1
Tree Assessment Methods	1
City of Mountain View Urban Tree Protection Requirements	2
Santa Clara County Tree Protection Requirements	2
Description of Trees	3
Protected Trees	5
Suitability for Preservation	6
Preliminary Evaluation of Impacts and Recommendations	6
Preliminary Tree Preservation Guidelines	7

**List of Tables**

---

Table 1. Tree Condition and Frequency of Occurrence	4
Table 2. Tree Suitability for Preservation	7

**Exhibits**

---

***Tree Inventory Map***  
***Tree Assessment***  
***Tree Disposition***

# **Preliminary Arborist Report MVTC Grade Separation & Access Project Mountain View, CA**

## ***Introduction and Overview***

Kimley-Horn is working with the City of Mountain View to create the Castro Street grade separation and make improvements to the Caltrain Station and bicycle and pedestrian facilities. HortScience | Bartlett Consulting was asked to prepare a **Preliminary Arborist Report** for the site as part of the submittal to the City of Mountain View. The report is preliminary because plans are in the conceptual stages, and no civil plans were evaluated for this report.

This report provides the following information:

1. An evaluation of the health and structural condition of the trees within the proposed project area based on a visual inspection from the ground.
2. A preliminary assessment of trees that will be preserved and removed based on Kimley-Horn's preliminary plans.
3. Preliminary guidelines for tree preservation during the design, construction, and maintenance phases of development.

## ***Tree Assessment Methods***

Trees were assessed on June 28 and July 12, 2019. The assessment included all trees located within various project areas identified by Kimley-Horn. The assessment procedure consisted of the following steps:

1. Identifying the tree species;
2. Tagging each tree with a numerically coded metal tag and recording its location on a map (trees were numbered #1-448);
3. Measuring the trunk diameter at a point 54" above grade;
4. Evaluating the health and structural condition using a scale of 1 to 5:
  - 5** - A healthy, vigorous tree, reasonably free of signs and symptoms of disease, with good structure and form typical of the species.
  - 4** - Tree with slight decline in vigor, small amount of twig dieback, minor structural defects that could be corrected.
  - 3** - Tree with moderate vigor, moderate twig and small branch dieback, thinning of crown, poor leaf color, moderate structural defects that might be mitigated with regular care.
  - 2** - Tree in decline, epicormic growth, extensive dieback of medium to large branches, significant structural defects that cannot be abated.
  - 1** - Tree in severe decline, dieback of scaffold branches and/or trunk; most of foliage from epicormics; extensive structural defects that cannot be abated.
5. Rating the suitability for preservation as "high", "moderate" or "low". Suitability for preservation considers the health, age, and structural condition of the tree species and its potential to remain an asset to the site.

**High:** Trees with good health and structural stability that have the potential for longevity at the site.

**Moderate:** Trees with somewhat declining health and/or structural defects than can be abated with treatment. The tree will require more intense management and monitoring, and may have shorter life span than those in 'high' category.

**Low:** Trees in poor health or with significant structural defects that cannot be mitigated. Tree is expected to continue to decline, regardless of treatment. The species or individual tree may have characteristics

that are undesirable for landscapes, and generally are unsuited for use areas.

### ***City of Mountain View Urban Tree Protection Requirements***

All trees “located within the City right-of-way along streets, in parks, and other City-owned properties” are regulated by the City. (Municipal Code Ch. 32).

Ordinance No. 4.11 (3/1/11) Chapter 32, Article II, Protection of Urban Forest protects *Heritage* trees within the city. *Heritage* trees are defined as:

1. A tree which has a trunk with a circumference of 48 inches (15 inches diameter) or more measured at fifty-four (54) inches above natural grade;
2. A multi-branched tree which has major branches below fifty-four (54) inches above the natural grade with a circumference of 48 inches measured just below the first major trunk fork.
3. Any *Quercus* (oak), *Sequoia* (redwood), or *Cedrus* (cedar) tree with a circumference of 12 inches (4 inches diameter) or more when measured at fifty-four (54) inches above natural grade;
4. A tree or grove of trees designated by resolution of the City Council to be of special historical value or of significant community benefit.

*Heritage* trees are required to be maintained and preserved in a “state of good health.” They may not be “injured, damaged, destroyed, moved or removed” without a Heritage Tree Removal Permit.

The Heritage Tree Removal permit can be obtained by submitting a Planning Application with an arborist report and site plan showing trees to be removed as well as planting plan showing replacement trees and paying the application fee.

### ***Santa Clara County Tree Protection Requirements***

The Santa Clara County tree preservation and removal ordinance (Division C16, Section C16-3(g)) states that “any tree, regardless of size, within road rights-of-way and easements of the County, whether within or without the unincorporated territory of the County” is protected. Per Section C16-7 of the County Code, the removal of any tree, regardless of size, located within a County road right-of-way shall require an Encroachment Permit from the Department of Roads and Airports not less than 60 days prior to planned removal. The following information must be included when applying for the Permit:

1. A brief statement of the reasons for removal of the tree.
2. A photograph of the tree(s) proposed for removal.
3. A site plan with the accurate location, number, species, size (diameter measured 4.5' above ground, approximate height and canopy diameter), general health, and approximate age.
4. Location of property lines, names of the streets fronting the property and edge of any right-of-way.
5. A replanting and/or revegetation plan for all trees to be removed. Replacement trees shall be of a like kind and species of removed tree, if native and feasible, or of a kind and species to be determined by the Planning Department. Replacement tree planting shall utilize at least five (5) gallon size stock.

### **Description of Trees**

HortScience evaluated 448 trees, representing 39 different species (Table 1). Overall, the trees at the site were in good-excellent (61%) to fair (29%), and poor (10%) condition. Tree species selection was typical of those found in Bay Area landscapes. Descriptions of each tree are found in the **Tree Assessment** and approximate locations are plotted on the **Tree Inventory Map** (see Exhibits).

Half of the trees evaluated were comprised of only five species: Canary Island pine (12%), Sawleaf zelkova (11%), London plane (10%), crape myrtle (10%), and flaxleaf paperbark (8%).

Canary Island pine was the most frequently occurring species, with 53 trees. Pines were semi-mature to mature, with trunk diameters from 12 to 36 inches. Trees were concentrated in the center medians on Central Expressway. A group of 10 pines was located at the Franklin St. and Evelyn Ave. intersection. Most of the trees were in good and excellent condition (85%) with good structure and dense crowns (Photo 1). Only 8 trees were rated in fair condition with slightly thin crowns, codominant trunks, or asymmetrical form.

Fifty-one (51) Sawleaf zelkova were evaluated, ranging in trunk diameter size from 3 to 16 inches. All zelkovas were in the Caltrain parking lot, and their conditions ranged from good (10 trees), to fair (29 trees) and poor (12 trees). Sawleaf zelkovas were showing various stages of drought stress in the form of twig and branch dieback and leaf necrosis. Trees in



**Photo 1** (right): Canary Island pines #36-45 located at the end of Franklin at Evelyn were in good condition.

**Photo 2** (bottom): London planes #302-305 were in excellent condition.



**Table 1. Condition ratings and frequency of occurrence of trees  
 950 W. El Camino Real, Mountain View, CA**

Common Name	Scientific Name	Condition			Total
		Poor (1-2)	Fair (3)	Good (4-5)	
Boxelder	<i>Acer negundo</i>	-	1	-	1
Red maple	<i>Acer rubrum</i>	-	-	17	17
Strawberry tree	<i>Arbutus unedo</i>	-	-	1	1
Deodar cedar	<i>Cedrus deodara</i>	-	-	1	1
European hackberry	<i>Celtis australis</i>	-	1	2	3
Chinese hackberry	<i>Celtis sinensis</i>	-	2	-	2
Eastern redbud	<i>Cercis canadensis</i>	6	4	3	13
Camphor	<i>Cinnamomum camphora</i>	-	9	15	24
Autumn Purple ash	<i>Fraxinus americana</i> 'Autumn Purple'	-	-	1	1
Raywood ash	<i>Fraxinus angustifolia</i> 'Raywood'	1	3	2	6
Evergreen ash	<i>Fraxinus uhdei</i>	1	-	-	1
Ginkgo	<i>Ginkgo biloba</i>	2	-	3	5
Honey locust	<i>Gleditsia triacanthos</i>	2	2	-	4
Jacaranda	<i>Jacaranda mimosifolia</i>	1	2	-	3
California black walnut	<i>Juglans hindsii</i>	2	1	1	4
Crape myrtle	<i>Lagerstroemia indica</i>	-	4	41	45
Glossy privet	<i>Ligustrum lucidum</i>	1	2	-	3
Sweetgum	<i>Liquidambar styraciflua</i>	1	10	1	12
Brisbane box	<i>Lophostemon confertus</i>	-	1	22	23
Flaxleaf paperbark	<i>Melaleuca linariifolia</i>	7	21	8	36
Firethorn	<i>Pyracantha</i> sp.	1	-	-	1
Olive	<i>Olea europaea</i>	-	-	5	5
Canary Island date palm	<i>Phoenix canariensis</i>	-	-	1	1
Canary Island pine	<i>Pinus canariensis</i>	-	8	45	53
Italian stone pine	<i>Pinus pinea</i>	-	-	1	1
Monterey pine	<i>Pinus radiata</i>	1	-	-	1
Chinese pistache	<i>Pistacia chinensis</i>	2	2	15	19
London plane	<i>Platanus x hispanica</i>	-	-	47	47
Almond	<i>Prunus dulcis</i>	-	1	-	1
Hollyleaf cherry	<i>Prunus ilicifolia</i>	-	3	-	3
Japanese flowering cherry	<i>Prunus serrulata</i>	3	-	1	4
Evergreen pear	<i>Pyrus kawakamii</i>	1	2	4	7
Coast live oak	<i>Quercus agrifolia</i>	-	10	11	21
California pepper	<i>Schinus molle</i>	-	1	1	2
Coast redwood	<i>Sequoia sempervirens</i>	-	5	6	11
Little leaf linden	<i>Tilia cordata</i>	-	2	6	8
Chinese elm	<i>Ulmus parvifolia</i>	-	4	1	5
Mexican fan palm	<i>Washingtonia robusta</i>	-	-	2	2
Sawleaf zelkova	<i>Zelkova serrata</i>	12	29	10	51
<b>Total</b>		<b>44</b>	<b>130</b>	<b>274</b>	<b>448</b>



fair condition had thinning crowns and minor dieback; whereas trees in poor condition had significant dieback and/or dead limbs with little chance for recovery.

All 47 London planes evaluated were in good and excellent condition (Photo 2). All but three trees were semi-mature to mature with trunk diameters from 8 to 21 inches. All trees had good structure and dense crowns. Several trees were growing close to one another resulting in crowded or asymmetrical form. Trees were located along the north side of Evelyn Ave. and in the northwest corner of the transit center site. Three newly planted trees were located at Stierlin Rd.

Most of the 45 crape myrtles were in a row on the south side of Central expressway along the light rail tracks. Nearly all trees (41 trees) were in good and excellent condition and were young to semi-mature, with trunk diameters from 1 to 8 inches.

Flaxleaf paperbark were concentrated in the center median on Central Expressway. Of the 36 trees evaluated, eight were in good condition, 21 were fair, and seven were poor. Many trees were growing near or beneath larger trees resulting in stunted or asymmetrical form. Tree size ranged from 2 to 11 inches.

The largest trees evaluated included the following.

- Italian stone pine (64" DBH) in good condition, at the corner of Evelyn Ave. and Bryant St. identified for preservation (Photo 3)
- Canary Island pines #155 (36") and #214 (33") in good condition, in the Central Expy. median. Tree #214 is identified for removal.
- Coast live oak #446 (33") in good condition, located in the CalTrain ROW and identified for removal (Photo 4)

The remaining species represented 5% or less of the population and included among others coast redwood, camphor, Brisbane box, Chinese pistache, and sweetgum.



**Photo 3** (top left): Italian stone pine #79, located at the corner of Evelyn and Bryant, was the largest tree evaluated.



**Photo 4** (top right): Coast live oak #446, located in the CalTrain ROW was in good condition.

### ***Protected Trees***

Because all trees were located on either City of Mountain View property or along Central Expressway, which falls within Santa Clara County, all 448 trees were protected and are regulated by their corresponding jurisdictions.

Of the trees located on City of Mountain View property, 75 trees qualified as *Heritage*.

One seventy-four (174) trees were located on Santa Clara County property, all of which are protected by the ordinance.

### ***Suitability for Preservation***

Before evaluating the impacts that will occur during development, it is important to consider the quality of the tree resource itself, and the potential for individual trees that are preserved on development sites must be carefully selected to make sure that they may survive development impacts, adapt to a new environment, and perform well in the landscape.

Each tree was rated for suitability for preservation based upon its age, health, structural condition, and ability to safely coexist within a development environment (see ***Tree Assessment*** in Exhibits, and Table 2). We consider trees with high suitability for preservation to be the best candidates for preservation. We do not recommend retention of trees with low suitability for preservation in areas where people or property will be present. Retention of trees with moderate suitability for preservation depends upon the intensity of proposed site changes. Off-site and street trees were not rated.

- **Tree health**

Healthy, vigorous trees are better able to tolerate impacts such as root injury, demolition of existing structures, changes in soil grade and moisture, and soil compaction than are non-vigorous trees.

- **Structural integrity**

Trees with significant amounts of wood decay and other structural defects that cannot be corrected are likely to fail. Such trees should not be preserved in areas where damage to people or property is likely.

- **Species response**

There is a wide variation in the response of individual species to construction impacts and changes in the environment. For instance, Canary Island pine, London plane and coast redwood are relatively tolerant of construction impacts compared to camphor, which is sensitive to root damage.

- **Tree age and longevity**

Old trees, while having significant emotional and aesthetic appeal, have limited physiological capacity to adjust to an altered environment. Young trees are better able to generate new tissue and respond to change.

- **Species invasiveness**

Species that spread across a site and displace desired vegetation are not always appropriate for retention. This is particularly true when indigenous species are displaced. The California Invasive Plant Inventory Database (<http://www.cal-ipc.org/paf/>) lists species identified as being invasive. Mountain View is part of the Central West Floristic Province. California pepper, Canary Island date palm, and olive are listed as having "limited" invasiveness.



**Table 2. Tree suitability for preservation  
950 W. El Camino Real, Mountain View, CA**

<b>High</b>	Trees in this category are in good health and structural stability and have the potential for longevity at the site. Two hundred two (202) trees were in this category.
<b>Moderate</b>	Trees in this category have fair health and/or structural defects that may be abated with treatment. These trees require more intense management and monitoring, and may have shorter life-spans than those in the “high” category. One hundred eighty-one (181) trees had a moderate suitability for preservation.
<b>Low</b>	Trees in this category are in poor health or have significant defects in structure that cannot be abated with treatment. These trees can be expected to decline regardless of management. The species or individual tree may possess either characteristics that are undesirable in landscape settings or be unsuited for use areas. Sixty-five (65) trees were in this category.

### ***Preliminary Evaluation of Impacts and Recommendations***

Appropriate tree retention develops a practical match between the location and intensity of construction activities and the quality and health of trees. The Tree Assessment was the reference point for tree condition and quality. Potential impacts from construction were estimated given the project information available to date. I referred to the 15% Preliminary Project Concept (7/2/19) to estimate impacts to trees. Surveyed trunk locations were not included on the plans.

Plans for the development are in the preliminary stage, therefore this evaluation of impacts and the following tree protection guidelines can only be considered preliminary. In order for HortScience | Bartlett Consulting to adequately evaluate impacts and provide specific tree protection guidelines, the client must provide developed site plans to be reanalyzed by the Consulting Arborist and this section revised. Plans should include the following information:

- Demolition, grading/drainage, utility, and landscape/irrigation information with surveyed tree locations on all plans;
- Any modifications to plans that will affect trees intended for preservation.

The development proposes construction of a two-way vehicular ramp from Shoreline Blvd. to Evelyn Ave.; closure of Franklin St. at Evelyn Ave.; elimination of the at-grade crossing at Castro St.; bike and pedestrian under-crossings at various locations; Caltrain Station improvements; reconstruction of intersections; expanded bicycle and pedestrian facilities; and roadway improvements.

Based on my evaluation of the plan, I estimate 185 trees will need to be removed to accommodate project construction activities. Of these 185 trees:

- 108 trees were on Santa Clara County ROW and require a permit of removal.
- 22 were on City of Mountain View property and were considered Heritage.

The ***Preliminary Tree Disposition*** form (in *Exhibits*) indicates which trees will be removed with reasons for removal.

### ***Preliminary Tree Preservation Guidelines***

The goal of tree preservation is not merely tree survival during development but maintenance of tree health and beauty for many years. Trees retained on sites that are either subject to extensive injury during construction or are inadequately maintained become a liability rather than an asset. The response of individual trees will depend on the amount of excavation and grading, the care with which demolition is undertaken, and the construction methods. Coordinating any construction activity inside the **TREE PROTECTION ZONE** can minimize these impacts.

The following recommendations will help reduce impacts to trees from development and maintain and improve their health and vitality through the clearing, grading and construction phases.

#### ***Design recommendations***

1. All plans affecting trees shall be reviewed by the Consulting Arborist regarding tree impacts. These include, but are not limited to, demolition plans, grading and utility plans, landscape and irrigation plans.
2. A **TREE PROTECTION ZONE** must be established for trees to be preserved, in which no disturbance is permitted. **TREE PROTECTION ZONES** shall be identified for trees to be preserved by the Consulting Arborist once project plans have been finalized. No grading, excavation, construction or storage of materials shall occur within that zone. For design purposes, the **TREE PROTECTION ZONES** shall extend to tree driplines.
3. Underground services including utilities, sub-drains, water or sewer shall be routed around the **TREE PROTECTION ZONE**. Where encroachment cannot be avoided, special construction techniques such as hand digging or tunneling under roots shall be employed where necessary to minimize root injury.
4. No underground services including utilities, sub-drains, water or sewer shall be placed in the **TREE PROTECTION ZONE**.
5. **Tree Preservation Guidelines**, prepared by the Consulting Arborist, should be included on all plans.
6. Do not lime within 25' of any tree. Lime is toxic to tree roots.
7. Any herbicides placed under paving materials must be safe for use around trees and labeled for that use.
8. Irrigation systems must be designed so that no trenching will occur not within the **TREE PROTECTION ZONE**.

#### ***Pre-construction treatments and recommendations***

1. The construction superintendent shall meet with the Consulting Arborist before beginning work to discuss work procedures and tree protection.
2. Fence all trees to be retained to completely enclose the **TREE PROTECTION ZONE** prior to demolition, grubbing or grading. Fences shall be 6 ft. chain link or equivalent as approved by Consulting Arborist. Fences are to remain until all grading and construction is completed.
3. Pruning trees to provide construction and access clearance may be required. Off-site trees will likely require some amount of pruning to provide a construction clearance.
4. Prune trees to be preserved to clean the crown and to provide clearance. All pruning shall be done by a State of California Licensed Tree Contractor (C61/D49). All pruning shall be done by Certified Arborist or Certified Tree Worker in accordance with the Best Management Practices for Pruning (International Society of Arboriculture, 2002) and adhere to the most recent editions of the American National Standard for Tree Care Operations (Z133.1) and Pruning (A300).

5. All tree work shall comply with the Migratory Bird Treaty Act as well as California Fish and Wildlife code 3503-3513 to not disturb nesting birds. To the extent feasible tree pruning and removal should be scheduled outside of the breeding season. Breeding bird surveys should be conducted prior to tree work. Qualified biologists should be involved in establishing work buffers for active nests.

***Recommendations for tree protection during construction***

1. Prior to beginning work, the contractors working in the vicinity of trees to be preserved are required to meet with the Consulting Arborist at the site to review all work procedures, access routes, storage areas and tree protection measures.
2. All contractors shall conduct operations in a manner that will prevent damage to trees to be preserved.
3. No grading, construction, demolition or other work shall occur within the **TREE PROTECTION ZONE**. Any modifications must be approved and monitored by the Consulting Arborist.
4. Fences have been erected to protect trees to be preserved. Fences define a specific **TREE PROTECTION ZONE** for each tree or group of trees. Fences are to remain until all site work has been completed. Fences may not be relocated or removed without permission of the Consultant.
5. Construction trailers, traffic and storage areas must remain outside fenced areas at all times.
6. Prior to grading, pad preparation, excavation for foundations/footings/walls, trenching, trees may require root pruning outside the **TREE PROTECTION ZONE**. Any root pruning required for construction purposes shall receive the prior approval of, and be supervised by, the Consulting Arborist.
7. If injury should occur to any tree during construction, it should be evaluated as soon as possible by the Consulting Arborist so that appropriate treatments can be applied.
8. No excess soil, chemicals, debris, equipment or other materials shall be dumped or stored within the **TREE PROTECTION ZONE**.
9. Any additional tree pruning needed for clearance during construction must be performed by a Certified Arborist and not by construction personnel.

**Maintenance of impacted trees**

Preserved trees will experience a physical environment different from that pre-development. As a result, tree health and structural stability should be monitored. Occasional pruning, fertilization, mulch, pest management, replanting and irrigation may be required. In addition, provisions for monitoring both tree health and structural stability following construction must be made a priority. Inspect trees annually and following major storms to identify conditions requiring treatment to manage risk associated with tree failure.

Our procedures included assessing trees for observable defects in structure. This is not to say that trees without significant defects will not fail. Failure of apparently defect-free trees does occur, especially during storm events. Wind forces, for example, can exceed the strength of defect-free wood causing branches and trunks to break. Wind forces coupled with rain can saturate soils, reducing their ability to hold roots, and blow over defect-free trees. Although we cannot predict all failures, identifying those trees with observable defects is a critical component of enhancing public safety.

Furthermore, trees change over time. Our inspections represent the condition of the tree at the time of inspection. As trees age, the likelihood of failure of branches or entire trees increases. Annual tree inspections are recommended to identify changes to tree health and structure. In addition, trees should be inspected after storms of unusual severity to evaluate

damage and structural changes. Initiating these inspections is the responsibility of the client and/or tree owner.

If you have any questions regarding my observations or recommendations, please contact me.

**HortScience | Bartlett Consulting**

A handwritten signature in cursive script, appearing to read "Deanne Ecklund".

Deanne Ecklund  
Registered Consulting Arborist #647



## Exhibits

---

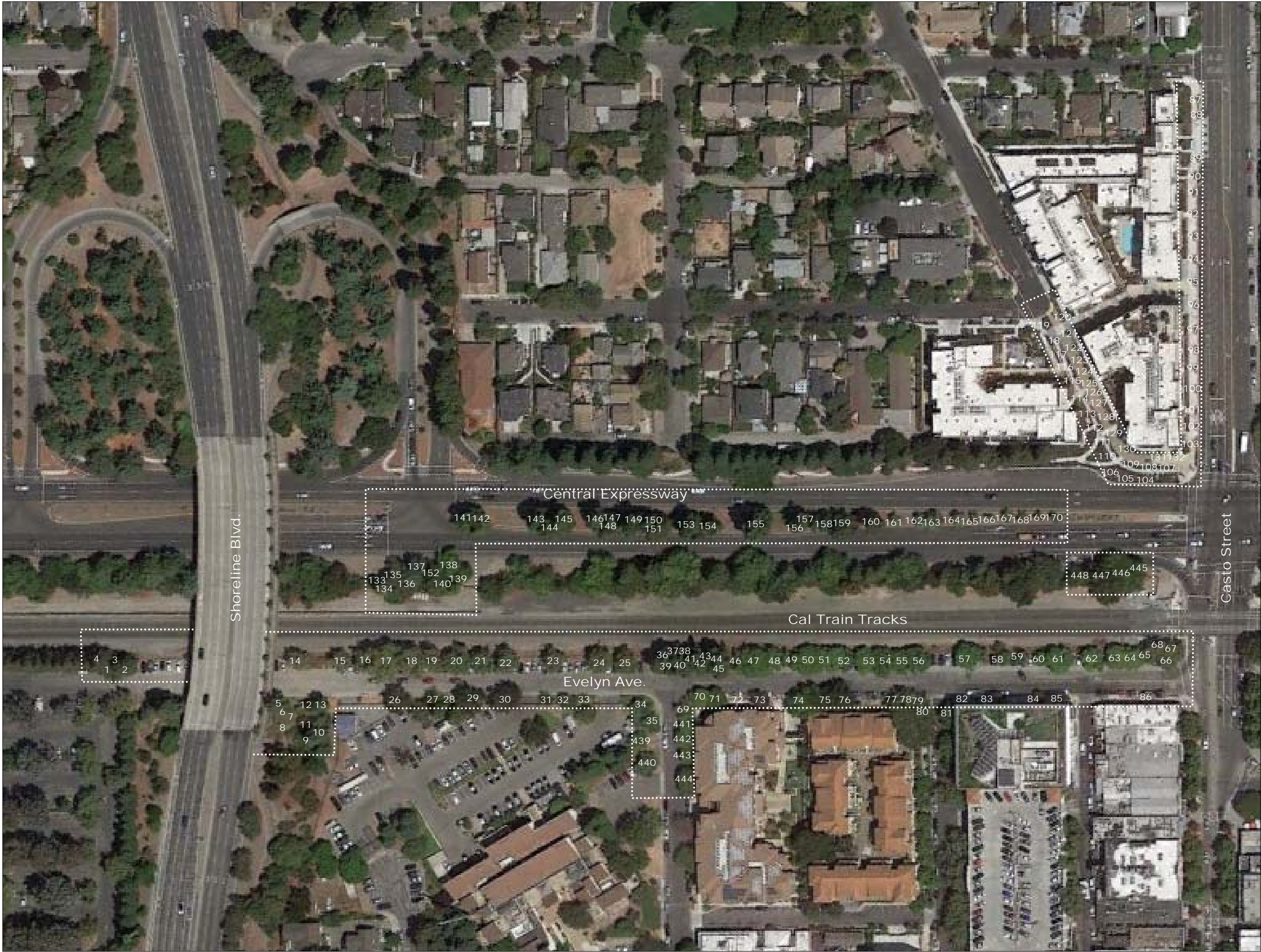
**Tree Inventory Map**

**Tree Assessment**

**Tree Disposition**







# Tree Inventory Map

**Mountain View  
Transit Center  
Shoreline to Castro Street  
Mountain View, CA**

*Prepared for:*  
**Kimley-Horn  
Sacramento, CA**



July 2019

No Scale

**Notes:**

Base map provided by:  
Google Earth

Numbered tree locations are approximate



325 Ray Street  
Pleasanton, California 94566  
Phone 925.484.0211  
Fax 925.484.0596



## Tree Inventory Map

**Mountain View  
Transit Center  
Castro Street  
to Hwy 85  
Mountain View, CA**

*Prepared for:*  
**Kimley-Horn  
Sacramento, CA**



July 2019

No Scale

### Notes:

Base map provided by:  
Google Earth

Numbered tree locations are approximate



325 Ray Street  
Pleasanton, California 94566  
Phone 925.484.0211  
Fax 925.484.0596

# Tree Assessment

## Mountain View Transit Center Grade Separation & Access Project Mountain View, CA

July 2019



Tree No.	Species	Trunk Diameter (in.)	Condition 1=poor 5=excellent	Suitability for Preservation	Heritage Tree?	SCCo Permit?	Comments
1	London plane	10	4	Moderate	-	-	Codominant trunks at 10'; asymmetrical crown south; twig dieback.
2	Coast redwood	9	3	Moderate	Yes	-	Group it 3 trees; asymmetrical crown south; slightly thin crown.
3	Coast redwood	28	3	Moderate	Yes	-	Good form and structure; thinning crown.
4	Coast redwood	9	3	Moderate	Yes	-	Group it 3 trees; asymmetrical crown north; slightly thin crown.
5	Coast redwood	28	4	Moderate	Yes	-	Slightly thin crown; good form and structure.
6	Coast redwood	12	4	Moderate	Yes	-	Slightly thin crown; crowded form.
7	Firethorn	3,2,2,2,2	2	Low	-	-	Multiple attachments at base; dead stem; poor form and structure.
8	Almond	5,2,1,1,1,1	3	Low	-	-	Multiple attachments at base ; many trunk sprouts.
9	Coast redwood	30	4	Moderate	Yes	-	Good form and structure; dense crown.
10	Coast redwood	13,13	3	Low	Yes	-	Codominant trunks at base; browning foliage.
11	Glossy privet	3,3,3,2	2	Low	-	-	Multiple attachments at base; crowded form; asymmetrical crown east.
12	Coast redwood	24	3	Low	Yes	-	Thinning crown.
13	Coast redwood	30	4	Moderate	Yes	-	Good form and structure.
14	London plane	14	4	High	-	-	Good form and structure; dense crown.
15	London plane	11	4	High	-	-	Codominant trunks at 7'; good form.
16	London plane	12	4	High	-	-	Codominant trunks at 6'; good form, fair structure.
17	London plane	21	5	High	Yes	-	Good form and structure; dense crown.
18	London plane	19	5	High	Yes	-	Good form and structure; dense crown.
19	London plane	14	5	High	-	-	Good form and structure; dense crown.
20	London plane	15	5	High	Yes	-	Good form and structure; dense crown.
21	London plane	12	4	High	-	-	Good form and structure; heavy lateral west.
22	London plane	14	5	High	-	-	Good form and structure; dense crown.
23	London plane	14	5	High	-	-	Good form and structure; dense crown.
24	London plane	15	5	High	Yes	-	Good form and structure; dense crown.
25	London plane	13	5	High	-	-	Good form and structure; dense crown.
26	Raywood ash	32	2	Low	Yes	-	Multiple attachments at 6'; significant dieback.
27	Honey locust	12	3	Moderate	-	-	Codominant trunks at 6'; thin crown; twig dieback.



# Tree Assessment

## Mountain View Transit Center Grade Separation & Access Project Mountain View, CA

July 2019



Tree No.	Species	Trunk Diameter (in.)	Condition 1=poor 5=excellent	Suitability for Preservation	Heritage Tree?	SCCo Permit?	Comments
28	Honey locust	2	3	Moderate	-	-	Stunted form.
29	Raywood ash	24	3	Moderate	Yes	-	Codominant trunks at 6'; twig dieback in patches.
30	Raywood ash	30	3	Moderate	Yes	-	Codominant trunks at 6'; twig dieback in patches.
31	Honey locust	9	2	Low	-	-	Poor form; twig dieback throughout.
32	Olive	10	4	High	-	-	Good form and structure.
33	Honey locust	4	2	Low	-	-	Poor form; twig dieback throughout.
34	Olive	10	4	High	-	-	Good form and structure.
35	Olive	11	4	High	-	-	Good form and structure.
36	Canary Island pine	21	4	High	Yes	-	Group of trees; crowded form; raised to 20'
37	Canary Island pine	19	4	High	Yes	-	Group of trees; crowded form; raised to 20'
38	Canary Island pine	16	4	High	Yes	-	Group of trees; crowded form; raised to 20'
39	Canary Island pine	13	4	High	-	-	Group of trees; crowded form; raised to 20'
40	Canary Island pine	23	4	High	Yes	-	Group of trees; crowded form; raised to 20'
41	Canary Island pine	19	4	High	Yes	-	Group of trees; crowded form; raised to 20'
42	Canary Island pine	21	4	High	Yes	-	Group of trees; crowded form; raised to 20'
43	Canary Island pine	18	4	High	Yes	-	Group of trees; crowded form; raised to 20'
44	Canary Island pine	24	4	High	Yes	-	Group of trees; crowded form; raised to 20'
45	Canary Island pine	21	4	High	Yes	-	Group of trees; crowded form; raised to 20'
46	Camphor	13	3	Low	-	-	Thin crown; crowded form; in asphalt cutout.
47	Camphor	25	4	Moderate	Yes	-	Spreading crown; good form.
48	Camphor	20	3	Moderate	Yes	-	Asymmetrical crown; minor twig dieback.
49	Camphor	13	3	Moderate	-	-	Small crown; crowded form.
50	Camphor	20	4	Moderate	Yes	-	Dense crown; good form.
51	Camphor	20	4	Moderate	Yes	-	Dense crown; good form.
52	Camphor	11	4	Moderate	-	-	Dense crown; slightly crowded form.
53	Camphor	16	4	Moderate	Yes	-	Dense crown; good form; minor twig dieback.
54	Camphor	17	4	Moderate	Yes	-	Dense crown; good form; minor twig dieback.

# Tree Assessment

## Mountain View Transit Center Grade Separation & Access Project Mountain View, CA

July 2019



Tree No.	Species	Trunk Diameter (in.)	Condition 1=poor 5=excellent	Suitability for Preservation	Heritage Tree?	SCCo Permit?	Comments
55	Camphor	15	4	Moderate	Yes	-	Dense crown; good form; minor twig dieback.
56	Camphor	20	4	Moderate	Yes	-	Dense crown; good form.
57	Camphor	22	4	Moderate	Yes	-	Dense crown; good form; minor twig dieback.
58	Camphor	12	3	Moderate	-	-	Compact form; slightly chlorotic.
59	Camphor	12	3	Moderate	-	-	Compact form; slightly chlorotic.
60	Camphor	14	4	Moderate	-	-	Dense, compact form.
61	Camphor	21	4	Moderate	Yes	-	Spreading crown.
62	Camphor	16	4	Moderate	Yes	-	Dense crown; light standard through crown.
63	Camphor	18	4	Moderate	Yes	-	Dense crown; slightly asymmetrical crown.
64	Camphor	15	4	Moderate	Yes	-	Dense crown; slightly asymmetrical crown.
65	Camphor	13	3	Low	-	-	Dense crown; large trunk wound on south.
66	London plane	12	5	High	-	-	Group of 3 trees; dense crown.
67	London plane	11	5	High	-	-	Group of 3 trees; dense crown.
68	London plane	12	5	High	-	-	Group of 3 trees; dense crown.
69	Chinese pistache	12	2	Low	-	-	Significant dieback in upper crown.
70	Chinese pistache	10	4	High	-	-	Codominant trunks at 6'; good form.
71	Chinese pistache	11	4	High	-	-	Multiple trunks at 6'; good form.
72	Chinese pistache	2	4	Moderate	-	-	Good young tree; minor twig dieback.
73	Raywood ash	11	3	Low	-	-	Twig and branch dieback; fair form.
74	Chinese pistache	19	4	Moderate	Yes	-	Fair form; dense crown; limb tearout on north.
75	Raywood ash	9	4	Moderate	-	-	Crowded form; no dieback.
76	Raywood ash	17	5	High	Yes	-	Dense, healthy, spreading crown.
77	Chinese pistache	2	5	High	-	-	Good young tree; dense crown.
78	Chinese pistache	2	5	High	-	-	Good young tree; dense crown.
79	Italian stone pine	64	4	Moderate	Yes	-	Spreading crown; fair structure; heavy lateral limb south.
80	Chinese pistache	7	4	Moderate	-	-	Codominant trunks at 6'; dense crown; beneath canopy of pine.
81	Chinese pistache	15	4	Moderate	Yes	-	Codominant trunks at 7'; pruned for building clearance; asymmetrical crown west.



# Tree Assessment

## Mountain View Transit Center Grade Separation & Access Project Mountain View, CA

July 2019



Tree No.	Species	Trunk Diameter (in.)	Condition 1=poor 5=excellent	Suitability for Preservation	Heritage Tree?	SCCo Permit?	Comments
82	Chinese pistache	4	4	High	-	-	Good young tree; fair structure; hanging torn limb.
83	Chinese pistache	4	5	High	-	-	Good young tree.
84	Chinese pistache	5	5	High	-	-	Good young tree.
85	Chinese pistache	5	5	High	-	-	Good young tree.
86	Autumn Purple ash	2	4	High	-	-	Good young tree; minor twig dieback.
87	Red maple	2	5	High	-	-	Narrow form; good young tree.
88	Red maple	2	5	High	-	-	Narrow form; good young tree.
89	Red maple	2	5	High	-	-	Narrow form; good young tree.
90	Red maple	2	5	High	-	-	Narrow form; good young tree.
91	Red maple	2	5	High	-	-	Narrow form; good young tree.
92	Red maple	2	5	High	-	-	Narrow form; good young tree.
93	Red maple	2	5	High	-	-	Narrow form; good young tree.
94	Red maple	2	5	High	-	-	Narrow form; good young tree.
95	Red maple	2	5	High	-	-	Narrow form; good young tree.
96	Red maple	2	5	High	-	-	Narrow form; good young tree.
97	Red maple	2	5	High	-	-	Narrow form; good young tree.
98	Red maple	2	5	High	-	-	Narrow form; good young tree.
99	Red maple	2	5	High	-	-	Narrow form; good young tree.
100	Red maple	2	5	High	-	-	Narrow form; good young tree.
101	Red maple	2	5	High	-	-	Narrow form; good young tree.
102	Red maple	2	5	High	-	-	Narrow form; good young tree.
103	Red maple	2	5	High	-	-	Narrow form; good young tree.
104	Crape myrtle	1	3	Moderate	-	-	Small tree; stunted form.
105	Crape myrtle	1	3	Moderate	-	-	Small tree; stunted form.
106	Crape myrtle	1	5	High	-	-	Good young tree.
107	Brisbane box	3	5	High	-	-	Good form and structure; beneath overhead utilities.
108	Brisbane box	3	5	High	-	-	Good form and structure; beneath overhead utilities.

# Tree Assessment

## Mountain View Transit Center Grade Separation & Access Project Mountain View, CA

July 2019



Tree No.	Species	Trunk Diameter (in.)	Condition 1=poor 5=excellent	Suitability for Preservation	Heritage Tree?	SCCo Permit?	Comments
109	Brisbane box	2	5	High	-	-	Good form and structure; beneath overhead utilities.
110	Brisbane box	2	5	High	-	-	Good form and structure; beneath overhead utilities.
111	Brisbane box	2	3	Moderate	-	-	Slightly thin crown.
112	Brisbane box	2	5	High	-	-	Good young tree.
113	Brisbane box	3	5	High	-	-	Good young tree.
114	Brisbane box	2	5	High	-	-	Good young tree.
115	Brisbane box	2	5	High	-	-	Good young tree.
116	Brisbane box	2	5	High	-	-	Good young tree.
117	Brisbane box	2	4	High	-	-	Good young tree; slightly thin crown.
118	Brisbane box	2	4	High	-	-	Good young tree; slightly thin crown.
119	London plane	2	5	High	-	-	Good young tree.
120	London plane	1	5	High	-	-	Good young tree.
121	London plane	2	4	High	-	-	Good young tree; trunk curves south.
122	Brisbane box	3	5	High	-	-	Good young tree.
123	Brisbane box	3	5	High	-	-	Good young tree
124	Brisbane box	2	5	High	-	-	Good young tree.
125	Brisbane box	3	5	High	-	-	Good young tree
126	Brisbane box	2	4	High	-	-	Good young tree; slightly thin crown.
127	Brisbane box	2	5	High	-	-	Good young tree
128	Brisbane box	2	5	High	-	-	Good young tree
129	Brisbane box	2	5	High	-	-	Good young tree
130	Brisbane box	3	5	High	-	-	Good young tree
131	Brisbane box	2	4	High	-	-	Good young tree; slightly thin crown.
132	Brisbane box	3	4	High	-	-	Good young tree; slightly thin crown.
133	Mexican fan palm	24	5	High	-	-	37' BTH
134	Glossy privet	6	3	Low	-	-	Crowded form.
135	Chinese elm	14,8,6,5,5	3	Moderate	-	Yes	Multiple attachments at base; fair form and structure.

# Tree Assessment

## Mountain View Transit Center Grade Separation & Access Project Mountain View, CA

July 2019



Tree No.	Species	Trunk Diameter (in.)	Condition 1=poor 5=excellent	Suitability for Preservation	Heritage Tree?	SCCo Permit?	Comments
136	California pepper	28,15	3	Moderate	-	Yes	Codominant trunks at 10'; poor form; thin crown.
137	Deodar cedar	21	5	High	-	Yes	Good form and structure; dense crown.
138	Chinese elm	22	3	Moderate	-	Yes	Fair form and structure; dense crown; heavy lateral limb with crack.
139	Mexican fan palm	22	4	High	-	Yes	32' brown trunk height.
140	Glossy privet	5	3	Low	-	Yes	Crowded along fence.
141	Canary Island pine	29	5	High	-	-	Growing in pair; dense crown.
142	Canary Island pine	20	5	High	-	-	Growing in pair; dense crown.
143	Canary Island pine	21	4	High	-	-	Group of 3; codominant trunks high in crown; dense crown.
144	Canary Island pine	25	4	High	-	-	Group of 3; codominant trunks high in crown; dense crown.
145	Canary Island pine	26	4	High	-	-	Group of 3; codominant trunks high in crown; dense crown.
146	Canary Island pine	24	5	High	-	-	Good form and structure; dense crown.
147	Canary Island pine	12	4	Moderate	-	-	Good form and structure; slightly thin crown.
148	Canary Island pine	24	4	Moderate	-	-	Good form and structure; slightly thin crown.
149	Canary Island pine	27	5	High	-	-	Good form and structure; dense crown; heavy lateral limb south over road.
150	Canary Island pine	14	4	Moderate	-	-	Good form and structure; crowded form.
151	Canary Island pine	31	4	High	-	-	Good form and structure; codominant trunks high in crown.
152	Monterey pine	21	2	Low	-	Yes	Poor form and structure; twig and branch dieback.
153	Canary Island pine	31	4	High	-	-	Codominant trunks at 7'; dense crown.
154	Canary Island pine	17	5	High	-	-	Good form and structure; narrow form.
155	Canary Island pine	36	5	High	-	-	Good form and structure; dense crown.
156	Canary Island pine	16	3	Moderate	-	-	Good form and structure; small crown; chlorotic.
157	Canary Island pine	23	5	High	-	-	Good form and structure; dense crown.
158	Canary Island pine	17	5	High	-	Yes	Good form and structure; slightly crowded form.
159	Canary Island pine	17	5	High	-	Yes	Good form and structure; slightly crowded form.
160	Canary Island pine	21	5	High	-	Yes	Good form and structure; dense crown.
161	Canary Island pine	24	5	High	-	Yes	Good form and structure; dense crown.

# Tree Assessment

## Mountain View Transit Center Grade Separation & Access Project Mountain View, CA

July 2019



Tree No.	Species	Trunk Diameter (in.)	Condition 1=poor 5=excellent	Suitability for Preservation	Heritage Tree?	SCCo Permit?	Comments
162	Sweetgum	8	3	Moderate	-	Yes	Fair form and structure; small crown; twig dieback.
163	Sweetgum	7	3	Moderate	-	Yes	Fair form and structure; small crown; twig dieback.
164	Sweetgum	9	3	Moderate	-	Yes	Fair form and structure; minor twig dieback.
165	Sweetgum	9	3	Moderate	-	Yes	Fair form and structure; small crown; twig dieback; small trunk cavities.
166	Sweetgum	6	3	Moderate	-	Yes	Fair form and structure; severe trunk sunburn.
167	Sweetgum	7	2	Low	-	Yes	Dead limbs.
168	Sweetgum	7	4	Moderate	-	Yes	Good form and structure; minor twig dieback.
169	Sweetgum	6	3	Moderate	-	Yes	Fair form and structure; small crown; twig dieback.
170	Sweetgum	6	3	Moderate	-	Yes	Fair form and structure; small crown; twig dieback.
171	Boxelder	14,11,10	3	Moderate	-	-	Multiple attachments at base; trunk cavities; tearout wound; slightly thin crown.
172	Chinese elm	19	3	Moderate	-	Yes	Typical form and structure; spreading crown; beneath overhead utilities.
173	California pepper	16	5	High	Yes	-	DBH estimated; growing in Adobe Building; good form and structure; overhanging sidewalk.
174	Strawberry tree	8	4	High	-	-	DBH estimated; growing in Adobe Building; good form and structure; heavy lateral limb overhangs sidewalk 5'.
175	Chinese hackberry	2	3	Low	-	Yes	Stunted form.
176	Chinese hackberry	4	3	Moderate	-	Yes	Codominant trunks at 4'; fair form; beneath overhead utilities.
177	European hackberry	6	3	Moderate	-	Yes	Codominant trunks at 5'; fair form; beneath overhead utilities;
178	European hackberry	9	4	Moderate	-	Yes	Codominant trunks at 7'; good form and structure; beneath overhead utilities.
179	European hackberry	11	4	Moderate	-	-	Multiple attachments at 8"; good form and structure; beneath overhead utilities.
180	Crape myrtle	2	4	High	-	Yes	Good form and structure; sprouts at base.
181	Crape myrtle	2	4	High	-	Yes	Good form and structure; good young tree.
182	Eastern redbud	8	4	High	-	Yes	Good form, fair structure; dense crown.
183	Eastern redbud	8	4	Moderate	-	Yes	Fair form and structure; crowded by adjacent tree.

# Tree Assessment

## Mountain View Transit Center Grade Separation & Access Project Mountain View, CA

July 2019



Tree No.	Species	Trunk Diameter (in.)	Condition 1=poor 5=excellent	Suitability for Preservation	Heritage Tree?	SCCo Permit?	Comments
184	Jacaranda	12,11,9	3	Moderate	-	Yes	Fair form and structure; slightly thin crown.
185	Sweetgum	6	3	Moderate	-	Yes	Fair form and structure; crowded by adjacent tree.
186	Sweetgum	5	3	Moderate	-	Yes	Fair form and structure; small crown.
187	Sweetgum	7	3	Moderate	-	Yes	Fair form and structure; small crown.
188	Flaxleaf paperbark	5	3	Moderate	-	Yes	Fair form and structure; small crown.
189	Flaxleaf paperbark	9	3	Moderate	-	Yes	Fair form and structure; minor twig dieback.
190	Flaxleaf paperbark	11	3	Moderate	-	Yes	Fair form and structure; minor twig dieback.
191	Canary Island pine	24	5	High	-	Yes	Good form and structure; dense crown.
192	Flaxleaf paperbark	3	2	Low	-	Yes	Suppressed.
193	Canary Island pine	16	3	Moderate	-	Yes	Sinuous trunk.
194	Canary Island pine	21	5	High	-	Yes	Good form and structure; dense crown.
195	Flaxleaf paperbark	4	3	Moderate	-	Yes	Suppressed, asymmetrical form.
196	Flaxleaf paperbark	4	3	Moderate	-	Yes	Small crown.
197	Flaxleaf paperbark	9	3	Moderate	-	Yes	Poor form, fair structure; crowded.
198	Canary Island pine	14	3	Moderate	-	Yes	Crowded form.
199	Canary Island pine	28	4	Moderate	-	Yes	Asymmetrical crown.
200	Flaxleaf paperbark	3	3	Moderate	-	Yes	Suppressed, asymmetrical form.
201	Canary Island pine	18	5	High	-	Yes	Good form and structure; dense crown.
202	Flaxleaf paperbark	2	3	Moderate	-	Yes	Small tree; suppressed.
203	Flaxleaf paperbark	3	4	Moderate	-	Yes	Good form and structure; suppressed.
204	Canary Island pine	19	5	High	-	Yes	Good form and structure; dense crown.
205	Flaxleaf paperbark	5	4	Moderate	-	Yes	Fair form and structure; suppressed.
206	Canary Island pine	18	5	High	-	Yes	Good form and structure; dense crown.
207	Flaxleaf paperbark	11	3	Low	-	Yes	Codominant trunks at 6' narrow attachments; crowded form.
208	Canary Island pine	19	5	High	-	Yes	Good form and structure; dense crown.
209	Canary Island pine	19	3	Moderate	-	Yes	Codominant trunks at 18'; good form.
210	Flaxleaf paperbark	5	3	Low	-	Yes	Codominant trunks with narrow attachments; twisted form.



# Tree Assessment

## Mountain View Transit Center Grade Separation & Access Project Mountain View, CA

July 2019



Tree No.	Species	Trunk Diameter (in.)	Condition 1=poor 5=excellent	Suitability for Preservation	Heritage Tree?	SCCo Permit?	Comments
211	Canary Island pine	21	4	Moderate	-	Yes	Good form and structure; slightly thin crown.
212	Flaxleaf paperbark	2	3	Moderate	-	Yes	Small tree; suppressed.
213	Flaxleaf paperbark	2	2	Low	-	Yes	Small tree; suppressed.
214	Canary Island pine	33	5	High	-	Yes	Good form and structure; dense crown.
215	Flaxleaf paperbark	2	2	Low	-	Yes	Small tree; trunk bows south; suppressed.
216	Flaxleaf paperbark	3	3	Moderate	-	Yes	Small tree; suppressed.
217	Flaxleaf paperbark	7	4	Moderate	-	Yes	Fair structure; dense crown.
218	Flaxleaf paperbark	2	2	Low	-	Yes	Small tree; suppressed.
219	Flaxleaf paperbark	3	3	Moderate	-	Yes	Small tree; suppressed.
220	Flaxleaf paperbark	3	3	Moderate	-	Yes	Small tree; suppressed.
221	Flaxleaf paperbark	2	3	Moderate	-	Yes	Small tree; suppressed.
222	Canary Island pine	23	5	High	-	Yes	Good form and structure; dense crown.
223	Flaxleaf paperbark	3	3	Moderate	-	Yes	Small tree; suppressed.
224	Canary Island pine	30	5	High	-	Yes	Good form and structure; dense crown.
225	Eastern redbud	3	2	Low	-	Yes	Poor form and structure; dieback.
226	Eastern redbud	4	3	Moderate	-	Yes	Fair form and structure; twig dieback.
227	Canary Island pine	27	3	Moderate	-	Yes	Good form and structure; slightly thin crown.
228	Flaxleaf paperbark	3	3	Moderate	-	Yes	Small tree; suppressed.
229	Flaxleaf paperbark	3	4	Moderate	-	Yes	Small tree; dense crown; suppressed.
230	Canary Island pine	21	4	Moderate	-	Yes	Fair form, good structure; slightly thin crown.
231	Flaxleaf paperbark	4	3	Moderate	-	Yes	Codominant trunks at 3'; fair form; suppressed.
232	Canary Island pine	18	4	High	-	Yes	Good form and structure; heavy lateral.
233	Coast redwood	7	4	Moderate	-	Yes	Good form and structure; stunted form.
234	Flaxleaf paperbark	8	4	Moderate	-	Yes	Compact, dense crown.
235	Flaxleaf paperbark	5	4	Moderate	-	-	Dense crown; multiple attachments high in crown.
236	Canary Island pine	26	3	Moderate	-	-	Codominant trunks at 20'; slightly thin crown.
237	Canary Island pine	30	4	Moderate	-	-	Dense, narrow crown; crowded.

# Tree Assessment

## Mountain View Transit Center Grade Separation & Access Project Mountain View, CA

July 2019



Tree No.	Species	Trunk Diameter (in.)	Condition 1=poor 5=excellent	Suitability for Preservation	Heritage Tree?	SCCo Permit?	Comments
238	Flaxleaf paperbark	10	4	Moderate	-	-	Fair form and structure; dense crown.
239	Flaxleaf paperbark	4	3	Moderate	-	-	Small tree; suppressed.
240	Canary Island pine	24	5	High	-	-	Good form and structure; dense crown.
241	Canary Island pine	12	3	Low	-	-	Small, thin crown; suppressed.
242	Canary Island pine	16	3	Moderate	-	-	Small, thinning crown; suppressed.
243	Canary Island pine	26	5	High	-	-	Good form and structure; dense crown.
244	Coast redwood	14	4	High	-	-	Good form and structures; crowded.
245	Flaxleaf paperbark	5	4	Moderate	-	-	Dense crown; fair form.
246	Flaxleaf paperbark	7	2	Low	-	-	Fair form and structure; stunted growth.
247	Flaxleaf paperbark	11	3	Moderate	-	-	Fair form and structure; dense crown.
248	Flaxleaf paperbark	10	2	Low	-	-	Twig dieback throughout crown.
249	Flaxleaf paperbark	10	3	Moderate	-	-	Fair form and structure; dense crown.
250	Flaxleaf paperbark	10	2	Low	-	-	Twig dieback throughout crown.
251	Crape myrtle	5	5	High	-	-	Good form and structure; dense crown.
252	Crape myrtle	5	5	High	-	-	Good form and structure; dense crown.
253	Crape myrtle	4	4	Moderate	-	-	Good form and structure; minor twig dieback.
254	Crape myrtle	3	3	Moderate	-	-	Slightly thin crown.
255	Crape myrtle	3	3	Moderate	-	-	Slightly thin crown.
256	Crape myrtle	4	4	Moderate	-	-	Good form and structure; slightly thin crown.
257	Crape myrtle	3	4	High	-	-	Good form and structure; compact, dense crown.
258	Crape myrtle	3	4	High	-	-	Good form and structure; compact, dense crown.
259	Crape myrtle	8	4	High	-	-	Good form and structure.
260	Crape myrtle	6	4	High	-	-	Good form and structure.
261	Crape myrtle	7	4	High	-	-	Good form and structure.
262	Crape myrtle	7	4	High	-	-	Good form and structure.
263	Crape myrtle	7	4	High	-	-	Good form and structure.
264	Crape myrtle	6	4	High	-	-	Good form and structure.

# Tree Assessment

## Mountain View Transit Center Grade Separation & Access Project Mountain View, CA

July 2019



Tree No.	Species	Trunk Diameter (in.)	Condition 1=poor 5=excellent	Suitability for Preservation	Heritage Tree?	SCCo Permit?	Comments
265	Crape myrtle	7	4	High	-	-	Good form and structure.
266	Crape myrtle	7	4	High	-	-	Good form and structure.
267	Crape myrtle	2	4	High	-	-	Good form and structure; small crown.
268	Crape myrtle	7	5	High	-	-	Good form and structure.
269	Crape myrtle	7	5	High	-	-	Good form and structure.
270	Crape myrtle	7	5	High	-	-	Good form and structure.
271	Crape myrtle	4	4	Moderate	-	-	Good form and structure; slightly thin crown.
272	Crape myrtle	5	4	High	-	-	Good form and structure.
273	Crape myrtle	5	4	High	-	-	Good form and structure.
274	Crape myrtle	8	5	High	-	Yes	Good form and structure.
275	Crape myrtle	7	5	High	-	Yes	Good form and structure.
276	Crape myrtle	7	5	High	-	Yes	Good form and structure.
277	Crape myrtle	8	5	High	-	Yes	Good form and structure; pruned on south for transit clearance.
278	Crape myrtle	8	5	High	-	Yes	Good form and structure; pruned on south for transit clearance.
279	Crape myrtle	7	5	High	-	Yes	Good form and structure; pruned on south for transit clearance.
280	Crape myrtle	8	5	High	-	Yes	Good form and structure; pruned on south for transit clearance.
281	Crape myrtle	7	5	High	-	Yes	Good form and structure; pruned on south for transit clearance.
282	Crape myrtle	7	5	High	-	Yes	Good form and structure; pruned on south for transit clearance.
283	Crape myrtle	7	4	High	-	Yes	Trunk bows east; dense crown.
284	Crape myrtle	6	5	High	-	Yes	Good form and structure; dense crown.
285	Crape myrtle	5	5	High	-	Yes	Good form and structure; dense crown.
286	Crape myrtle	6	5	High	-	Yes	Good form and structure; dense crown.
287	Crape myrtle	5,4,4,3,3,2, 2,1,1,1	5	High	-	-	Multiple attachments at base; dense crown.
288	Crape myrtle	3,3,2,2,2,1	5	High	-	-	Multiple attachments at base; dense crown.
289	Crape myrtle	5,4,4,4,3,3, 3,2,2,2	4	High	-	-	Multiple attachments at base; slightly thin crown.

# Tree Assessment

## Mountain View Transit Center Grade Separation & Access Project Mountain View, CA

July 2019



Tree No.	Species	Trunk Diameter (in.)	Condition 1=poor 5=excellent	Suitability for Preservation	Heritage Tree?	SCCo Permit?	Comments
290	Crape myrtle	4,4,3,3,3,2,2,2	4	High	-	-	Multiple attachments at base; dense crown.
291	Evergreen pear	12	4	Moderate	-	-	Multiple attachments at 6' with narrow attachments; dense crown.
292	Evergreen pear	15	4	Moderate	Yes	-	Multiple attachments at 6' with narrow attachments; dense crown.
293	Evergreen pear	6	2	Low	-	-	Crown mostly dead.
294	Camphor	16	3	Moderate	Yes	-	Codominant trunks at 6'; twig dieback in upper crown.
295	Camphor	18	3	Moderate	Yes	-	Multiple trunks at 6'; twig dieback in upper crown.
296	Camphor	19	3	Moderate	Yes	-	Codominant trunks at 6'; twig dieback in upper crown.
297	London plane	13	5	High	-	-	Utility vaults and backflow valve near base; surface roots; good form and structure; dense crown.
298	Eastern redbud	9	4	Moderate	-	-	Surface roots; suppressed.
299	London plane	13	5	High	-	-	Good form and structure; utility vault and FW near base; dense crown.
300	London plane	8	4	High	-	-	Good form and structure; slightly crowded form.
301	Canary Island date palm	32	5	High	Yes	-	25' brown trunk height.
302	London plane	12	5	High	-	-	Good form and structure; dense crown.
303	London plane	13	5	High	-	-	Good form and structure; dense crown.
304	London plane	13	5	High	-	-	Good form and structure; dense crown.
305	London plane	15	5	High	Yes	-	Good form and structure; dense crown.
306	London plane	17	4	Moderate	Yes	-	Pruned on north for train clearance; heavy lateral limb over bus shelter.
307	London plane	14	4	High	-	-	Asymmetrical crown south; pruned on north for train clearance.
308	London plane	14	4	High	-	-	Asymmetrical crown south; pruned on north for train clearance.
309	London plane	14	4	High	-	-	Asymmetrical crown south; pruned on north for train clearance.
310	London plane	15	4	High	Yes	-	Asymmetrical crown south; pruned on north for train clearance.
311	London plane	18	4	High	Yes	-	Asymmetrical crown south; pruned on north for train clearance.
312	Japanese flowering cherry	1	4	High	-	-	Good young tree.

# Tree Assessment

## Mountain View Transit Center Grade Separation & Access Project Mountain View, CA

July 2019



Tree No.	Species	Trunk Diameter (in.)	Condition 1=poor 5=excellent	Suitability for Preservation	Heritage Tree?	SCCo Permit?	Comments
313	Japanese flowering cherry	7	2	Low	-	-	Large stems removed; half of crown remains.
314	Little leaf linden	7	4	High	-	-	Good form, fair structure; dense crown.
315	Little leaf linden	8	4	High	-	-	Good form, fair structure; dense crown.
316	Little leaf linden	6	3	Low	-	-	Small, slightly thin crown; stunted form.
317	Little leaf linden	12	3	Moderate	-	-	4' trunk wound on south; dense crown.
318	Little leaf linden	9	4	Moderate	-	-	Dense, spreading crown; fair structure.
319	Little leaf linden	8	4	Moderate	-	-	Corrected lean north; good form.
320	Little leaf linden	10	4	High	-	-	Dense, spreading crown; low hanging branches.
321	Little leaf linden	8	4	High	-	-	Dense, spreading crown; low hanging branches.
322	Japanese flowering cherry	5	2	Low	-	-	In severe decline.
323	Japanese flowering cherry	5	2	Low	-	-	In severe decline.
324	Sawleaf zelkova	7	3	Moderate	-	-	Fair form and structure; twig dieback.
325	Sawleaf zelkova	9	4	Moderate	-	-	Good form, fair structure; spreading crown.
326	Sawleaf zelkova	9	2	Low	-	-	Half of crown in decline.
327	Sawleaf zelkova	12	2	Low	-	-	Half of crown in decline.
328	Sawleaf zelkova	16	3	Moderate	Yes	-	Spreading crown; twig dieback; trunk growing into grate.
329	Sawleaf zelkova	15	4	Moderate	Yes	-	Spreading crown; minor twig dieback.
330	Sawleaf zelkova	12	3	Low	-	-	Twig and branch dieback.
331	Sawleaf zelkova	7	2	Low	-	-	Mostly dead.
332	Sawleaf zelkova	7	3	Moderate	-	-	Small, slightly thin crown.
333	Coast live oak	25	4	High	Yes	-	Good form, fair structure; dense, spreading crown.
334	Coast live oak	20,20,14	3	Moderate	Yes	-	Multiple trunks at base; spreading crown.
335	Sawleaf zelkova	6	3	Low	-	-	Very thin crown.
336	Sawleaf zelkova	9	3	Moderate	-	-	Fair form and structure; slightly thin crown.
337	Sawleaf zelkova	10	3	Low	-	-	Twig dieback on west side of crown.
338	Sawleaf zelkova	10	4	Moderate	-	-	Good form and structure; slightly thin crown.
339	Sawleaf zelkova	8	1	Low	-	-	Mostly dead.



# Tree Assessment

## Mountain View Transit Center Grade Separation & Access Project Mountain View, CA

July 2019



Tree No.	Species	Trunk Diameter (in.)	Condition 1=poor 5=excellent	Suitability for Preservation	Heritage Tree?	SCCo Permit?	Comments
340	Sawleaf zelkova	11	4	Moderate	-	-	Good form and structure; slightly thin crown.
341	Sawleaf zelkova	11	4	High	-	-	Good form, fair structure; spreading crown.
342	Sawleaf zelkova	8	3	Moderate	-	-	Fair form and structure; slightly thin crown.
343	Sawleaf zelkova	10	4	Moderate	-	-	Good form, fair structure; slightly thin crown.
344	Evergreen pear	13	4	Moderate	-	-	Fair structure; dense crown.
345	Sawleaf zelkova	7	3	Moderate	-	-	Twig and branch dieback.
346	Evergreen pear	12	3	Moderate	-	-	Twig dieback in upper crown.
347	Sawleaf zelkova	5	3	Moderate	-	-	Small crown.
348	Evergreen pear	9	3	Moderate	-	-	Some twig and branch dieback.
349	Evergreen pear	9	4	Moderate	-	-	Good form, fair structure.
350	Sawleaf zelkova	8	3	Moderate	-	-	Fair form and structure; twig dieback.
351	Sawleaf zelkova	8	3	Low	-	-	Twig and branch dieback on west.
352	London plane	15	4	High	Yes	-	Street tree; good form and structure; slightly thin crown.
353	London plane	11	4	High	-	-	Street tree; good form and structure; slightly thin crown.
354	London plane	12	4	High	-	-	Street tree; good form and structure; slightly thin crown.
355	Sawleaf zelkova	9	1	Low	-	-	Mostly dead.
356	Sawleaf zelkova	6	4	High	-	-	Good form; small, dense crown.
357	Sawleaf zelkova	9	3	Moderate	-	-	Spreading, slightly thin crown; trunk wound; heavy lateral limb over parking.
358	Sawleaf zelkova	5	3	Moderate	-	-	Small crown; poor structure.
359	Sawleaf zelkova	4	3	Low	-	-	Small crown; twig dieback.
360	Sawleaf zelkova	3	2	Low	-	-	Small crown; twig and branch dieback.
361	Sawleaf zelkova	6	3	Moderate	-	-	Basal wound; minor twig dieback.
362	Sawleaf zelkova	5	2	Low	-	-	Small, very thin crown.
363	Sawleaf zelkova	5	2	Low	-	-	Very thin crown.
364	Sawleaf zelkova	7	4	Moderate	-	-	Good form; compact crown.
365	Sawleaf zelkova	6	3	Moderate	-	-	Small crown; twig dieback.
366	Sawleaf zelkova	11	2	Low	-	-	Twig and branch dieback in upper crown.

# Tree Assessment

## Mountain View Transit Center Grade Separation & Access Project Mountain View, CA

July 2019



Tree No.	Species	Trunk Diameter (in.)	Condition 1=poor 5=excellent	Suitability for Preservation	Heritage Tree?	SCCo Permit?	Comments
367	Sawleaf zelkova	9	3	Moderate	-	-	Small crown; twig dieback.
368	Sawleaf zelkova	15	3	Moderate	Yes	-	Twig and branch dieback on west.
369	Sawleaf zelkova	13	3	Moderate	-	-	Spreading crown; twig dieback.
370	Sawleaf zelkova	15	3	Low	Yes	-	Spreading crown; twig and branch dieback.
371	Sawleaf zelkova	8	3	Moderate	-	-	Good form; twig dieback.
372	Sawleaf zelkova	7	3	Moderate	-	-	Thin crown; twig dieback.
373	Sawleaf zelkova	6	3	Moderate	-	-	Thin crown; twig dieback.
374	Sawleaf zelkova	7	3	Moderate	-	-	Thin crown; twig dieback.
375	Sawleaf zelkova	9	3	Moderate	-	-	Thin crown; twig dieback.
376	Sawleaf zelkova	9	4	High	-	-	Good form; spreading crown; minor twig dieback.
377	Sawleaf zelkova	3	2	Low	-	-	Multiple trunk wounds; small crown; leans east.
378	Sawleaf zelkova	7	3	Moderate	-	-	Fair form and structure; twig dieback.
379	Sawleaf zelkova	9	3	Moderate	-	-	Good form; thin crown.
380	Sawleaf zelkova	8	2	Low	-	-	Thin crown; twig and branch dieback.
381	Sawleaf zelkova	7	4	Moderate	-	-	Good form; slightly thin crown.
382	Sawleaf zelkova	5	3	Moderate	-	-	Small, slightly thin crown.
383	Sawleaf zelkova	8	2	Low	-	-	Crown half dead.
384	London plane	14	4	High	-	-	Street tree; crowded form.
385	London plane	14	4	High	-	-	Street tree; good form; minor twig dieback.
386	London plane	11	4	High	-	-	Street tree; crowded form.
387	London plane	10	4	High	-	-	Street tree; crowded form.
388	London plane	11	4	High	-	-	Street tree; crowded form.
389	London plane	12	4	High	-	-	Street tree; crowded form.
390	London plane	11	4	High	-	-	Street tree; crowded form.
391	London plane	8	4	High	-	-	Street tree; crowded form.
392	London plane	12	4	High	-	-	Street tree; crowded form; twig dieback.
393	London plane	10	4	High	-	-	Street tree; crowded form.

# Tree Assessment

## Mountain View Transit Center Grade Separation & Access Project Mountain View, CA

July 2019



Tree No.	Species	Trunk Diameter (in.)	Condition 1=poor 5=excellent	Suitability for Preservation	Heritage Tree?	SCCo Permit?	Comments
394	London plane	12	4	High	-	-	Street tree; crowded form.
395	London plane	17	4	High	Yes	-	Street tree; crowded form.
396	Camphor	20	4	Moderate	Yes	-	Street tree; spreading crown; minor twig dieback.
397	California black walnut	10,8,6,6,6,5	3	Moderate	Yes	-	Multiple trunks at 1'; base covered in ivy; on slope; slightly thin crown.
398	Eastern redbud	7	3	Low	-	-	Twisted form; slightly thin crown.
399	Coast live oak	6,5,4	4	High	Yes	-	Multiple trunks at 1'; dense crown.
400	Hollyleaf cherry	3	3	Moderate	-	-	Crowded by adjacent trees.
401	Hollyleaf cherry	6,3	3	Moderate	-	-	Crowded by adjacent trees.
402	Coast live oak	22,18,15	4	Moderate	Yes	-	Off-site; multiple trunks at 4'; spreading crown.
403	Hollyleaf cherry	3	3	Moderate	-	-	Full crown; branches to ground.
404	California black walnut	8	2	Low	-	-	Top of crown dead.
405	Chinese pistache	6	4	Moderate	-	-	Typical form and structure; compact crown.
406	Chinese pistache	10	4	High	-	-	Good form, fair structure; dense crown.
407	Ginkgo	2	1	Low	-	-	Very thin crown.
408	Ginkgo	2	1	Low	-	-	Very thin crown; suppressed.
409	California black walnut	17	2	Low	Yes	-	Thin crown; branch dieback.
410	Coast live oak	8	3	Moderate	Yes	-	Trunk bows north; crowded.
411	Coast live oak	14	3	Moderate	Yes	-	Asymmetrical crown; crowded.
412	Coast live oak	13,10	4	High	Yes	-	Codominant trunks at 1'; spreading, slightly thin crown.
413	Coast live oak	14	4	High	Yes	-	Multiple attachments at 6'; spreading crown.
414	California black walnut	7	4	Moderate	-	-	Fair form and structure; dense crown.
415	Coast live oak	6	3	Moderate	Yes	-	On slope; crowded.
416	Eastern redbud	4	2	Low	-	-	Crowded; twig dieback.
417	Coast live oak	10	3	Moderate	Yes	-	On slope; crowded.
418	Coast live oak	9,4	3	Moderate	Yes	-	On slope; codominant trunks at 2'; curve in trunk.
419	Coast live oak	4	3	Moderate	Yes	-	On slope; suppressed.
420	Jacaranda	8,6,5	3	Moderate	-	-	Spreading form; twig dieback.

# Tree Assessment

## Mountain View Transit Center Grade Separation & Access Project Mountain View, CA

July 2019



Tree No.	Species	Trunk Diameter (in.)	Condition 1=poor 5=excellent	Suitability for Preservation	Heritage Tree?	SCCo Permit?	Comments
421	Ginkgo	6	4	Moderate	-	-	Fair form; dense crown; chlorotic.
422	Ginkgo	3	4	Moderate	-	-	Good young tree.
423	Jacaranda	4,3,2,2	2	Low	-	-	Thin crown; suppressed
424	Coast live oak	16	5	High	-	-	Good form and structure; dense crown; tussock moth.
425	Coast live oak	17	5	High	-	-	Good form and structure; dense crown; tussock moth.
426	Coast live oak	32	5	High	-	Yes	Good form and structure; dense crown; tussock moth.
427	Coast live oak	14	3	Moderate	-	Yes	Good form; slightly thin crown.
428	Eastern redbud	12	3	Moderate	-	Yes	Fair form and structure; crowded.
429	Ginkgo	9	4	Moderate	-	Yes	Curve in trunk; fair form and structure; crowded.
430	Eastern redbud	7	3	Moderate	-	Yes	Fair form and structure; twig dieback.
431	Eastern redbud	8	2	Low	-	Yes	Asymmetrical form; twig dieback.
432	Eastern redbud	6	2	Low	-	Yes	Poor form; dieback.
433	Coast live oak	16	4	High	-	Yes	Good form, fair structure.
434	Eastern redbud	5	2	Low	-	Yes	Poor form and structure; dieback.
435	Evergreen ash	8,7,6	2	Low	-	Yes	Multiple trunks at base; high, small crown.
436	Eastern redbud	6	2	Low	-	Yes	Poor form and structure; dieback.
437	Coast live oak	15	3	Moderate	-	-	Trunk wound; slightly thin crown.
438	Coast live oak	18	4	High	-	-	Good form and structure; minor twig dieback.
439	Olive	12	4	High	-	-	Good form and structure; compact crown.
440	Olive	12	4	High	-	-	Good form and structure.
441	Chinese pistache	16	3	Low	Yes	-	Good form; slightly thin crown; one dead limb.
442	Chinese pistache	12	4	High	-	-	Fair structure; dense crown.
443	Chinese pistache	17	3	Moderate	Yes	-	Good form; slightly thin crown.
444	Chinese pistache	12	1	Low	-	-	All but dead.
445	Chinese elm	23	4	Moderate	-	Yes	Full, dense crown; fair structure.
446	Coast live oak	33	4	Moderate	-	Yes	Dense, asymmetrical crown; crowded form.
447	Chinese elm	11	3	Moderate	-	Yes	Fair form and structure; crowded.

# Tree Assessment

Mountain View Transit Center Grade Separation & AccessProject  
Mountain View, CA  
July 2019



Tree No.	Species	Trunk Diameter (in.)	Condition 1=poor 5=excellent	Suitability for Preservation	Heritage Tree?	SCCo Permit?	Comments
448	Coast live oak	12,11,9	3	Moderate	-	Yes	Multiple attachments at base; growing into fence.

# Preliminary Tree Disposition

Mountain View Transit Center Grade Separation & Access Project  
Mountain View, CA

July 2019



Tree No.	Species	Trunk Diameter (in.)	Condition 1=poor 5=excellent	Suitability for Preservation	Heritage? (MV trees)	Jurisdiction	Disposition	SCCo Permit?	Comments
1	London plane	10	4	Moderate	No	MV	Preserve	-	Codominant trunks at 10'; asymmetrical crown south; twig dieback.
2	Coast redwood	9	3	Moderate	Yes	MV	Preserve	-	Group it 3 trees; asymmetrical crown south; slightly thin crown.
3	Coast redwood	28	3	Moderate	Yes	MV	Preserve	-	Good form and structure; thinning crown.
4	Coast redwood	9	3	Moderate	Yes	MV	Preserve	-	Group it 3 trees; asymmetrical crown north; slightly thin crown.
5	Coast redwood	28	4	Moderate	Yes	MV	Preserve	-	Slightly thin crown; good form and structure.
6	Coast redwood	12	4	Moderate	Yes	MV	Preserve	-	Slightly thin crown; crowded form.
7	Firethorn	3,2,2,2,2	2	Low	No	MV	Preserve	-	Multiple attachments at base; dead stem; poor form and structure.
8	Almond	5,2,1,1,1,1	3	Low	No	MV	Preserve	-	Multiple attachments at base ; many trunk sprouts.
9	Coast redwood	30	4	Moderate	Yes	MV	Preserve	-	Good form and structure; dense crown.
10	Coast redwood	13,13	3	Low	Yes	MV	Preserve	-	Codominant trunks at base; browning foliage.
11	Glossy privet	3,3,3,2	2	Low	No	MV	Preserve	-	Multiple attachments at base; crowded form; asymmetrical crown east.
12	Coast redwood	24	3	Low	Yes	MV	Preserve	-	Thinning crown.
13	Coast redwood	30	4	Moderate	Yes	MV	Preserve	-	Good form and structure.
14	London plane	14	4	High	No	MV	Remove	-	Good form and structure; dense crown.
15	London plane	11	4	High	No	MV	Remove	-	Codominant trunks at 7'; good form.
16	London plane	12	4	High	No	MV	Remove	-	Codominant trunks at 6'; good form, fair structure.
17	London plane	21	5	High	Yes	MV	Remove	-	Good form and structure; dense crown.
18	London plane	19	5	High	Yes	MV	Remove	-	Good form and structure; dense crown.
19	London plane	14	5	High	No	MV	Remove	-	Good form and structure; dense crown.
20	London plane	15	5	High	Yes	MV	Remove	-	Good form and structure; dense crown.
21	London plane	12	4	High	No	MV	Remove	-	Good form and structure; heavy lateral west.
22	London plane	14	5	High	No	MV	Remove	-	Good form and structure; dense crown.
23	London plane	14	5	High	No	MV	Remove	-	Good form and structure; dense crown.
24	London plane	15	5	High	Yes	MV	Remove	-	Good form and structure; dense crown.
25	London plane	13	5	High	No	MV	Remove	-	Good form and structure; dense crown.
26	Raywood ash	32	2	Low	Yes	MV	Remove	-	Multiple attachments at 6'; significant dieback.
27	Honey locust	12	3	Moderate	No	MV	Remove	-	Codominant trunks at 6'; thin crown; twig dieback.
28	Honey locust	2	3	Moderate	No	MV	Remove	-	Stunted form.

# Preliminary Tree Disposition

Mountain View Transit Center Grade Separation & Access Project  
Mountain View, CA

July 2019



Tree No.	Species	Trunk Diameter (in.)	Condition 1=poor 5=excellent	Suitability for Preservation	Heritage? (MV trees)	Jurisdiction	Disposition	SCCo Permit?	Comments
29	Raywood ash	24	3	Moderate	Yes	MV	Remove	-	Codominant trunks at 6'; twig dieback in patches.
30	Raywood ash	30	3	Moderate	Yes	MV	Remove	-	Codominant trunks at 6'; twig dieback in patches.
31	Honey locust	9	2	Low	No	MV	Remove	-	Poor form; twig dieback throughout.
32	Olive	10	4	High	No	MV	Remove	-	Good form and structure.
33	Honey locust	4	2	Low	No	MV	Remove	-	Poor form; twig dieback throughout.
34	Olive	10	4	High	No	MV	Remove	-	Good form and structure.
35	Olive	11	4	High	No	MV	Remove	-	Good form and structure.
36	Canary Island pine	21	4	High	Yes	MV	Remove	-	Group of trees; crowded form; raised to 20'
37	Canary Island pine	19	4	High	Yes	MV	Remove	-	Group of trees; crowded form; raised to 20'
38	Canary Island pine	16	4	High	Yes	MV	Remove	-	Group of trees; crowded form; raised to 20'
39	Canary Island pine	13	4	High	No	MV	Remove	-	Group of trees; crowded form; raised to 20'
40	Canary Island pine	23	4	High	Yes	MV	Preserve	-	Group of trees; crowded form; raised to 20'
41	Canary Island pine	19	4	High	Yes	MV	Preserve	-	Group of trees; crowded form; raised to 20'
42	Canary Island pine	21	4	High	Yes	MV	Preserve	-	Group of trees; crowded form; raised to 20'
43	Canary Island pine	18	4	High	Yes	MV	Preserve	-	Group of trees; crowded form; raised to 20'
44	Canary Island pine	24	4	High	Yes	MV	Preserve	-	Group of trees; crowded form; raised to 20'
45	Canary Island pine	21	4	High	Yes	MV	Preserve	-	Group of trees; crowded form; raised to 20'
46	Camphor	13	3	Low	No	MV	Preserve	-	Thin crown; crowded form; in asphalt cutout.
47	Camphor	25	4	Moderate	Yes	MV	Preserve	-	Spreading crown; good form.
48	Camphor	20	3	Moderate	Yes	MV	Preserve	-	Asymmetrical crown; minor twig dieback.
49	Camphor	13	3	Moderate	No	MV	Preserve	-	Small crown; crowded form.
50	Camphor	20	4	Moderate	Yes	MV	Preserve	-	Dense crown; good form.
51	Camphor	20	4	Moderate	Yes	MV	Preserve	-	Dense crown; good form.
52	Camphor	11	4	Moderate	No	MV	Preserve	-	Dense crown; slightly crowded form.
53	Camphor	16	4	Moderate	Yes	MV	Preserve	-	Dense crown; good form; minor twig dieback.
54	Camphor	17	4	Moderate	Yes	MV	Preserve	-	Dense crown; good form; minor twig dieback.
55	Camphor	15	4	Moderate	Yes	MV	Preserve	-	Dense crown; good form; minor twig dieback.
56	Camphor	20	4	Moderate	Yes	MV	Preserve	-	Dense crown; good form.



# Preliminary Tree Disposition

Mountain View Transit Center Grade Separation & Access Project  
Mountain View, CA

July 2019



Tree No.	Species	Trunk Diameter (in.)	Condition 1=poor 5=excellent	Suitability for Preservation	Heritage? (MV trees)	Jurisdiction	Disposition	SCCo Permit?	Comments
57	Camphor	22	4	Moderate	Yes	MV	Preserve	-	Dense crown; good form; minor twig dieback.
58	Camphor	12	3	Moderate	No	MV	Preserve	-	Compact form; slightly chlorotic.
59	Camphor	12	3	Moderate	No	MV	Preserve	-	Compact form; slightly chlorotic.
60	Camphor	14	4	Moderate	No	MV	Preserve	-	Dense, compact form.
61	Camphor	21	4	Moderate	Yes	MV	Preserve	-	Spreading crown.
62	Camphor	16	4	Moderate	Yes	MV	Remove	-	Dense crown; light standard through crown.
63	Camphor	18	4	Moderate	Yes	MV	Remove	-	Dense crown; slightly asymmetrical crown.
64	Camphor	15	4	Moderate	Yes	MV	Remove	-	Dense crown; slightly asymmetrical crown.
65	Camphor	13	3	Low	No	MV	Remove	-	Dense crown; large trunk wound on south.
66	London plane	12	5	High	No	MV	Remove	-	Group of 3 trees; dense crown.
67	London plane	11	5	High	No	MV	Remove	-	Group of 3 trees; dense crown.
68	London plane	12	5	High	No	MV	Preserve	-	Group of 3 trees; dense crown.
69	Chinese pistache	12	2	Low	No	MV	Preserve	-	Significant dieback in upper crown.
70	Chinese pistache	10	4	High	No	MV	Preserve	-	Codominant trunks at 6'; good form.
71	Chinese pistache	11	4	High	No	MV	Preserve	-	Multiple trunks at 6'; good form.
72	Chinese pistache	2	4	Moderate	No	MV	Preserve	-	Good young tree; minor twig dieback.
73	Raywood ash	11	3	Low	No	MV	Preserve	-	Twig and branch dieback; fair form.
74	Chinese pistache	19	4	Moderate	Yes	MV	Preserve	-	Fair form; dense crown; limb tearout on north.
75	Raywood ash	9	4	Moderate	No	MV	Preserve	-	Crowded form; no dieback.
76	Raywood ash	17	5	High	Yes	MV	Preserve	-	Dense, healthy, spreading crown.
77	Chinese pistache	2	5	High	No	MV	Preserve	-	Good young tree; dense crown.
78	Chinese pistache	2	5	High	No	MV	Preserve	-	Good young tree; dense crown.
79	Italian stone pine	64	4	Moderate	Yes	MV	Preserve	-	Spreading crown; fair structure; heavy lateral limb south.
80	Chinese pistache	7	4	Moderate	No	MV	Preserve	-	Codominant trunks at 6'; dense crown; beneath canopy of pine.
81	Chinese pistache	15	4	Moderate	Yes	MV	Preserve	-	Codominant trunks at 7'; pruned for building clearance; asymmetrical crown west.
82	Chinese pistache	4	4	High	No	MV	Preserve	-	Good young tree; fair structure; hanging torn limb.
83	Chinese pistache	4	5	High	No	MV	Preserve	-	Good young tree.

# Preliminary Tree Disposition

Mountain View Transit Center Grade Separation & Access Project  
Mountain View, CA

July 2019



Tree No.	Species	Trunk Diameter (in.)	Condition 1=poor 5=excellent	Suitability for Preservation	Heritage? (MV trees)	Jurisdiction	Disposition	SCCo Permit?	Comments
84	Chinese pistache	5	5	High	No	MV	Preserve	-	Good young tree.
85	Chinese pistache	5	5	High	No	MV	Preserve	-	Good young tree.
86	Autumn Purple ash	2	4	High	No	MV	Preserve	-	Good young tree; minor twig dieback.
87	Red maple	2	5	High	No	MV	Preserve	-	Narrow form; good young tree.
88	Red maple	2	5	High	No	MV	Remove	-	Narrow form; good young tree.
89	Red maple	2	5	High	No	MV	Remove	-	Narrow form; good young tree.
90	Red maple	2	5	High	No	MV	Preserve	-	Narrow form; good young tree.
91	Red maple	2	5	High	No	MV	Preserve	-	Narrow form; good young tree.
92	Red maple	2	5	High	No	MV	Preserve	-	Narrow form; good young tree.
93	Red maple	2	5	High	No	MV	Preserve	-	Narrow form; good young tree.
94	Red maple	2	5	High	No	MV	Preserve	-	Narrow form; good young tree.
95	Red maple	2	5	High	No	MV	Preserve	-	Narrow form; good young tree.
96	Red maple	2	5	High	No	MV	Preserve	-	Narrow form; good young tree.
97	Red maple	2	5	High	No	MV	Preserve	-	Narrow form; good young tree.
98	Red maple	2	5	High	No	MV	Preserve	-	Narrow form; good young tree.
99	Red maple	2	5	High	No	MV	Preserve	-	Narrow form; good young tree.
100	Red maple	2	5	High	No	MV	Preserve	-	Narrow form; good young tree.
101	Red maple	2	5	High	No	MV	Preserve	-	Narrow form; good young tree.
102	Red maple	2	5	High	No	MV	Preserve	-	Narrow form; good young tree.
103	Red maple	2	5	High	No	MV	Preserve	-	Narrow form; good young tree.
104	Crape myrtle	1	3	Moderate	No	MV	Remove	-	Small tree; stunted form.
105	Crape myrtle	1	3	Moderate	No	MV	Remove	-	Small tree; stunted form.
106	Crape myrtle	1	5	High	No	MV	Remove	-	Good young tree.
107	Brisbane box	3	5	High	No	MV	Preserve	-	Good form and structure; beneath overhead utilities.
108	Brisbane box	3	5	High	No	MV	Preserve	-	Good form and structure; beneath overhead utilities.
109	Brisbane box	2	5	High	No	MV	Preserve	-	Good form and structure; beneath overhead utilities.
110	Brisbane box	2	5	High	No	MV	Preserve	-	Good form and structure; beneath overhead utilities.
111	Brisbane box	2	3	Moderate	No	MV	Preserve	-	Slightly thin crown.

# Preliminary Tree Disposition

Mountain View Transit Center Grade Separation & Access Project  
Mountain View, CA

July 2019



Tree No.	Species	Trunk Diameter (in.)	Condition 1=poor 5=excellent	Suitability for Preservation	Heritage? (MV trees)	Jurisdiction	Disposition	SCCo Permit?	Comments
112	Brisbane box	2	5	High	No	MV	Preserve	-	Good young tree.
113	Brisbane box	3	5	High	No	MV	Preserve	-	Good young tree.
114	Brisbane box	2	5	High	No	MV	Preserve	-	Good young tree.
115	Brisbane box	2	5	High	No	MV	Preserve	-	Good young tree.
116	Brisbane box	2	5	High	No	MV	Preserve	-	Good young tree.
117	Brisbane box	2	4	High	No	MV	Preserve	-	Good young tree; slightly thin crown.
118	Brisbane box	2	4	High	No	MV	Preserve	-	Good young tree; slightly thin crown.
119	London plane	2	5	High	No	MV	Preserve	-	Good young tree.
120	London plane	1	5	High	No	MV	Preserve	-	Good young tree.
121	London plane	2	4	High	No	MV	Preserve	-	Good young tree; trunk curves south.
122	Brisbane box	3	5	High	No	MV	Preserve	-	Good young tree.
123	Brisbane box	3	5	High	No	MV	Preserve	-	Good young tree
124	Brisbane box	2	5	High	No	MV	Preserve	-	Good young tree.
125	Brisbane box	3	5	High	No	MV	Preserve	-	Good young tree
126	Brisbane box	2	4	High	No	MV	Preserve	-	Good young tree; slightly thin crown.
127	Brisbane box	2	5	High	No	MV	Preserve	-	Good young tree
128	Brisbane box	2	5	High	No	MV	Preserve	-	Good young tree
129	Brisbane box	2	5	High	No	MV	Preserve	-	Good young tree
130	Brisbane box	3	5	High	No	MV	Preserve	-	Good young tree
131	Brisbane box	2	4	High	No	MV	Preserve	-	Good young tree; slightly thin crown.
132	Brisbane box	3	4	High	No	MV	Preserve	-	Good young tree; slightly thin crown.
133	Mexican fan palm	24	5	High	-	SSCo	Preserve	-	37' BTH
134	Glossy privet	6	3	Low	-	SSCo	Preserve	-	Crowded form.
135	Chinese elm	14,8,6,5,5	3	Moderate	-	SSCo	Remove	Yes	Multiple attachments at base; fair form and structure.
136	California pepper	28,15	3	Moderate	-	SSCo	Remove	Yes	Codominant trunks at 10'; poor form; thin crown.
137	Deodar cedar	21	5	High	-	SSCo	Remove	Yes	Good form and structure; dense crown.
138	Chinese elm	22	3	Moderate	-	SSCo	Remove	Yes	Fair form and structure; dense crown; heavy lateral limb with crack.
139	Mexican fan palm	22	4	High	-	SSCo	Remove	Yes	32' brown trunk height.

# Preliminary Tree Disposition

Mountain View Transit Center Grade Separation & Access Project  
Mountain View, CA

July 2019



Tree No.	Species	Trunk Diameter (in.)	Condition 1=poor 5=excellent	Suitability for Preservation	Heritage? (MV trees)	Jurisdiction	Disposition	SSCo Permit?	Comments
140	Glossy privet	5	3	Low	-	SSCo	Remove	Yes	Crowded along fence.
141	Canary Island pine	29	5	High	-	SSCo	Preserve	-	Growing in pair; dense crown.
142	Canary Island pine	20	5	High	-	SSCo	Preserve	-	Growing in pair; dense crown.
143	Canary Island pine	21	4	High	-	SSCo	Preserve	-	Group of 3; codominant trunks high in crown; dense crown.
144	Canary Island pine	25	4	High	-	SSCo	Preserve	-	Group of 3; codominant trunks high in crown; dense crown.
145	Canary Island pine	26	4	High	-	SSCo	Preserve	-	Group of 3; codominant trunks high in crown; dense crown.
146	Canary Island pine	24	5	High	-	SSCo	Preserve	-	Good form and structure; dense crown.
147	Canary Island pine	12	4	Moderate	-	SSCo	Preserve	-	Good form and structure; slightly thin crown.
148	Canary Island pine	24	4	Moderate	-	SSCo	Preserve	-	Good form and structure; slightly thin crown.
149	Canary Island pine	27	5	High	-	SSCo	Preserve	-	Good form and structure; dense crown; heavy lateral limb south over road.
150	Canary Island pine	14	4	Moderate	-	SSCo	Preserve	-	Good form and structure; crowded form.
151	Canary Island pine	31	4	High	-	SSCo	Preserve	-	Good form and structure; codominant trunks high in crown.
152	Monterey pine	21	2	Low	-	SSCo	Remove	Yes	Poor form and structure; twig and branch dieback.
153	Canary Island pine	31	4	High	-	SSCo	Preserve	-	Codominant trunks at 7'; dense crown.
154	Canary Island pine	17	5	High	-	SSCo	Preserve	-	Good form and structure; narrow form.
155	Canary Island pine	36	5	High	-	SSCo	Preserve	-	Good form and structure; dense crown.
156	Canary Island pine	16	3	Moderate	-	SSCo	Preserve	-	Good form and structure; small crown; chlorotic.
157	Canary Island pine	23	5	High	-	SSCo	Preserve	-	Good form and structure; dense crown.
158	Canary Island pine	17	5	High	-	SSCo	Remove	Yes	Good form and structure; slightly crowded form.
159	Canary Island pine	17	5	High	-	SSCo	Remove	Yes	Good form and structure; slightly crowded form.
160	Canary Island pine	21	5	High	-	SSCo	Remove	Yes	Good form and structure; dense crown.
161	Canary Island pine	24	5	High	-	SSCo	Remove	Yes	Good form and structure; dense crown.
162	Sweetgum	8	3	Moderate	-	SSCo	Remove	Yes	Fair form and structure; small crown; twig dieback.
163	Sweetgum	7	3	Moderate	-	SSCo	Remove	Yes	Fair form and structure; small crown; twig dieback.
164	Sweetgum	9	3	Moderate	-	SSCo	Remove	Yes	Fair form and structure; minor twig dieback.
165	Sweetgum	9	3	Moderate	-	SSCo	Remove	Yes	Fair form and structure; small crown; twig dieback; small trunk cavities.
166	Sweetgum	6	3	Moderate	-	SSCo	Remove	Yes	Fair form and structure; severe trunk sunburn.
167	Sweetgum	7	2	Low	-	SSCo	Remove	Yes	Dead limbs.

# Preliminary Tree Disposition

Mountain View Transit Center Grade Separation & Access Project  
Mountain View, CA

July 2019



Tree No.	Species	Trunk Diameter (in.)	Condition 1=poor 5=excellent	Suitability for Preservation	Heritage? (MV trees)	Jurisdiction	Disposition	SCCo Permit?	Comments
168	Sweetgum	7	4	Moderate	-	SSCo	Remove	Yes	Good form and structure; minor twig dieback.
169	Sweetgum	6	3	Moderate	-	SSCo	Remove	Yes	Fair form and structure; small crown; twig dieback.
170	Sweetgum	6	3	Moderate	-	SSCo	Remove	Yes	Fair form and structure; small crown; twig dieback.
171	Boxelder	14,11,10	3	Moderate	No	MV	Preserve	-	Multiple attachments at base; trunk cavities; tearout wound; slightly thin crown.
172	Chinese elm	19	3	Moderate	-	SCCo	Remove	Yes	Typical form and structure; spreading crown; beneath overhead utilities.
173	California pepper	16	5	High	Yes	MV	Preserve	-	DBH estimated; growing in Adobe Building; good form and structure; overhanging sidewalk.
174	Strawberry tree	8	4	High	No	MV	Preserve	-	DBH estimated; growing in Adobe Building; good form and structure; heavy lateral limb overhangs sidewalk 5'.
175	Chinese hackberry	2	3	Low	-	SCCo	Remove	Yes	Stunted form.
176	Chinese hackberry	4	3	Moderate	-	SCCo	Remove	Yes	Codominant trunks at 4'; fair form; beneath overhead utilities.
177	European hackberry	6	3	Moderate	-	SCCo	Remove	Yes	Codominant trunks at 5'; fair form; beneath overhead utilities; surface roots.
178	European hackberry	9	4	Moderate	-	SCCo	Remove	Yes	Codominant trunks at 7'; good form and structure; beneath overhead utilities.
179	European hackberry	11	4	Moderate	-	SCCo	Preserve	-	Multiple attachments at 8"; good form and structure; beneath overhead utilities.
180	Crape myrtle	2	4	High	-	SCCo	Remove	Yes	Good form and structure; sprouts at base.
181	Crape myrtle	2	4	High	-	SCCo	Remove	Yes	Good form and structure; good young tree.
182	Eastern redbud	8	4	High	-	SCCo	Remove	Yes	Good form, fair structure; dense crown.
183	Eastern redbud	8	4	Moderate	-	SCCo	Remove	Yes	Fair form and structure; crowded by adjacent tree.
184	Jacaranda	12,11,9	3	Moderate	-	SCCo	Remove	Yes	Fair form and structure; slightly thin crown.
185	Sweetgum	6	3	Moderate	-	SCCo	Remove	Yes	Fair form and structure; crowded by adjacent tree.
186	Sweetgum	5	3	Moderate	-	SCCo	Remove	Yes	Fair form and structure; small crown.
187	Sweetgum	7	3	Moderate	-	SCCo	Remove	Yes	Fair form and structure; small crown.
188	Flaxleaf paperbark	5	3	Moderate	-	SCCo	Remove	Yes	Fair form and structure; small crown.
189	Flaxleaf paperbark	9	3	Moderate	-	SCCo	Remove	Yes	Fair form and structure; minor twig dieback.
190	Flaxleaf paperbark	11	3	Moderate	-	SCCo	Remove	Yes	Fair form and structure; minor twig dieback.
191	Canary Island pine	24	5	High	-	SCCo	Remove	Yes	Good form and structure; dense crown.

# Preliminary Tree Disposition

Mountain View Transit Center Grade Separation & Access Project  
Mountain View, CA

July 2019



Tree No.	Species	Trunk Diameter (in.)	Condition 1=poor 5=excellent	Suitability for Preservation	Heritage? (MV trees)	Jurisdiction	Disposition	SCCo Permit?	Comments
192	Flaxleaf paperbark	3	2	Low	-	SCCo	Remove	Yes	Suppressed.
193	Canary Island pine	16	3	Moderate	-	SCCo	Remove	Yes	Sinuous trunk.
194	Canary Island pine	21	5	High	-	SCCo	Remove	Yes	Good form and structure; dense crown.
195	Flaxleaf paperbark	4	3	Moderate	-	SCCo	Remove	Yes	Suppressed, asymmetrical form.
196	Flaxleaf paperbark	4	3	Moderate	-	SCCo	Remove	Yes	Small crown.
197	Flaxleaf paperbark	9	3	Moderate	-	SCCo	Remove	Yes	Poor form, fair structure; crowded.
198	Canary Island pine	14	3	Moderate	-	SCCo	Remove	Yes	Crowded form.
199	Canary Island pine	28	4	Moderate	-	SCCo	Remove	Yes	Asymmetrical crown.
200	Flaxleaf paperbark	3	3	Moderate	-	SCCo	Remove	Yes	Suppressed, asymmetrical form.
201	Canary Island pine	18	5	High	-	SCCo	Remove	Yes	Good form and structure; dense crown.
202	Flaxleaf paperbark	2	3	Moderate	-	SCCo	Remove	Yes	Small tree; suppressed.
203	Flaxleaf paperbark	3	4	Moderate	-	SCCo	Remove	Yes	Good form and structure; suppressed.
204	Canary Island pine	19	5	High	-	SCCo	Remove	Yes	Good form and structure; dense crown.
205	Flaxleaf paperbark	5	4	Moderate	-	SCCo	Remove	Yes	Fair form and structure; suppressed.
206	Canary Island pine	18	5	High	-	SCCo	Remove	Yes	Good form and structure; dense crown.
207	Flaxleaf paperbark	11	3	Low	-	SCCo	Remove	Yes	Codominant trunks at 6' narrow attachments; crowded form.
208	Canary Island pine	19	5	High	-	SCCo	Remove	Yes	Good form and structure; dense crown.
209	Canary Island pine	19	3	Moderate	-	SCCo	Remove	Yes	Codominant trunks at 18'; good form.
210	Flaxleaf paperbark	5	3	Low	-	SCCo	Remove	Yes	Codominant trunks with narrow attachments; twisted form.
211	Canary Island pine	21	4	Moderate	-	SCCo	Remove	Yes	Good form and structure; slightly thin crown.
212	Flaxleaf paperbark	2	3	Moderate	-	SCCo	Remove	Yes	Small tree; suppressed.
213	Flaxleaf paperbark	2	2	Low	-	SCCo	Remove	Yes	Small tree; suppressed.
214	Canary Island pine	33	5	High	-	SCCo	Remove	Yes	Good form and structure; dense crown.
215	Flaxleaf paperbark	2	2	Low	-	SCCo	Remove	Yes	Small tree; trunk bows south; suppressed.
216	Flaxleaf paperbark	3	3	Moderate	-	SCCo	Remove	Yes	Small tree; suppressed.
217	Flaxleaf paperbark	7	4	Moderate	-	SCCo	Remove	Yes	Fair structure; dense crown.
218	Flaxleaf paperbark	2	2	Low	-	SCCo	Remove	Yes	Small tree; suppressed.
219	Flaxleaf paperbark	3	3	Moderate	-	SCCo	Remove	Yes	Small tree; suppressed.



# Preliminary Tree Disposition

Mountain View Transit Center Grade Separation & Access Project  
Mountain View, CA

July 2019



Tree No.	Species	Trunk Diameter (in.)	Condition 1=poor 5=excellent	Suitability for Preservation	Heritage? (MV trees)	Jurisdiction	Disposition	SCCo Permit?	Comments
220	Flaxleaf paperbark	3	3	Moderate	-	SCCo	Remove	Yes	Small tree; suppressed.
221	Flaxleaf paperbark	2	3	Moderate	-	SCCo	Remove	Yes	Small tree; suppressed.
222	Canary Island pine	23	5	High	-	SCCo	Remove	Yes	Good form and structure; dense crown.
223	Flaxleaf paperbark	3	3	Moderate	-	SCCo	Remove	Yes	Small tree; suppressed.
224	Canary Island pine	30	5	High	-	SCCo	Remove	Yes	Good form and structure; dense crown.
225	Eastern redbud	3	2	Low	-	SCCo	Remove	Yes	Poor form and structure; dieback.
226	Eastern redbud	4	3	Moderate	-	SCCo	Remove	Yes	Fair form and structure; twig dieback.
227	Canary Island pine	27	3	Moderate	-	SCCo	Remove	Yes	Good form and structure; slightly thin crown.
228	Flaxleaf paperbark	3	3	Moderate	-	SCCo	Remove	Yes	Small tree; suppressed.
229	Flaxleaf paperbark	3	4	Moderate	-	SCCo	Remove	Yes	Small tree; dense crown; suppressed.
230	Canary Island pine	21	4	Moderate	-	SCCo	Remove	Yes	Fair form, good structure; slightly thin crown.
231	Flaxleaf paperbark	4	3	Moderate	-	SCCo	Remove	Yes	Codominant trunks at 3'; fair form; suppressed.
232	Canary Island pine	18	4	High	-	SCCo	Remove	Yes	Good form and structure; heavy lateral.
233	Coast redwood	7	4	Moderate	-	SCCo	Remove	Yes	Good form and structure; stunted form.
234	Flaxleaf paperbark	8	4	Moderate	-	SCCo	Remove	Yes	Compact, dense crown.
235	Flaxleaf paperbark	5	4	Moderate	-	SCCo	Preserve	-	Dense crown; multiple attachments high in crown.
236	Canary Island pine	26	3	Moderate	-	SCCo	Preserve	-	Codominant trunks at 20'; slightly thin crown.
237	Canary Island pine	30	4	Moderate	-	SCCo	Preserve	-	Dense, narrow crown; crowded.
238	Flaxleaf paperbark	10	4	Moderate	-	SCCo	Preserve	-	Fair form and structure; dense crown.
239	Flaxleaf paperbark	4	3	Moderate	-	SCCo	Preserve	-	Small tree; suppressed.
240	Canary Island pine	24	5	High	-	SCCo	Preserve	-	Good form and structure; dense crown.
241	Canary Island pine	12	3	Low	-	SCCo	Preserve	-	Small, thin crown; suppressed.
242	Canary Island pine	16	3	Moderate	-	SCCo	Preserve	-	Small, thinning crown; suppressed.
243	Canary Island pine	26	5	High	-	SCCo	Preserve	-	Good form and structure; dense crown.
244	Coast redwood	14	4	High	-	SCCo	Preserve	-	Good form and structures; crowded.
245	Flaxleaf paperbark	5	4	Moderate	-	SCCo	Preserve	-	Dense crown; fair form.
246	Flaxleaf paperbark	7	2	Low	-	SCCo	Preserve	-	Fair form and structure; stunted growth.
247	Flaxleaf paperbark	11	3	Moderate	-	SCCo	Preserve	-	Fair form and structure; dense crown.



# Preliminary Tree Disposition

Mountain View Transit Center Grade Separation & Access Project  
Mountain View, CA

July 2019



Tree No.	Species	Trunk Diameter (in.)	Condition 1=poor 5=excellent	Suitability for Preservation	Heritage? (MV trees)	Jurisdiction	Disposition	SCCo Permit?	Comments
248	Flaxleaf paperbark	10	2	Low	-	SCCo	Preserve	-	Twig dieback throughout crown.
249	Flaxleaf paperbark	10	3	Moderate	-	SCCo	Preserve	-	Fair form and structure; dense crown.
250	Flaxleaf paperbark	10	2	Low	-	SCCo	Preserve	-	Twig dieback throughout crown.
251	Crape myrtle	5	5	High	-	SCCo	Preserve	-	Good form and structure; dense crown.
252	Crape myrtle	5	5	High	-	SCCo	Preserve	-	Good form and structure; dense crown.
253	Crape myrtle	4	4	Moderate	-	SCCo	Preserve	-	Good form and structure; minor twig dieback.
254	Crape myrtle	3	3	Moderate	-	SCCo	Preserve	-	Slightly thin crown.
255	Crape myrtle	3	3	Moderate	-	SCCo	Preserve	-	Slightly thin crown.
256	Crape myrtle	4	4	Moderate	-	SCCo	Preserve	-	Good form and structure; slightly thin crown.
257	Crape myrtle	3	4	High	-	SCCo	Preserve	-	Good form and structure; compact, dense crown.
258	Crape myrtle	3	4	High	-	SCCo	Preserve	-	Good form and structure; compact, dense crown.
259	Crape myrtle	8	4	High	-	SCCo	Preserve	-	Good form and structure.
260	Crape myrtle	6	4	High	-	SCCo	Preserve	-	Good form and structure.
261	Crape myrtle	7	4	High	-	SCCo	Preserve	-	Good form and structure.
262	Crape myrtle	7	4	High	-	SCCo	Preserve	-	Good form and structure.
263	Crape myrtle	7	4	High	-	SCCo	Preserve	-	Good form and structure.
264	Crape myrtle	6	4	High	-	SCCo	Preserve	-	Good form and structure.
265	Crape myrtle	7	4	High	-	SCCo	Preserve	-	Good form and structure.
266	Crape myrtle	7	4	High	-	SCCo	Preserve	-	Good form and structure.
267	Crape myrtle	2	4	High	-	SCCo	Preserve	-	Good form and structure; small crown.
268	Crape myrtle	7	5	High	-	SCCo	Preserve	-	Good form and structure.
269	Crape myrtle	7	5	High	-	SCCo	Preserve	-	Good form and structure.
270	Crape myrtle	7	5	High	-	SCCo	Preserve	-	Good form and structure.
271	Crape myrtle	4	4	Moderate	-	SCCo	Preserve	-	Good form and structure; slightly thin crown.
272	Crape myrtle	5	4	High	-	SCCo	Preserve	-	Good form and structure.
273	Crape myrtle	5	4	High	-	SCCo	Preserve	-	Good form and structure.
274	Crape myrtle	8	5	High	-	SCCo	Remove	Yes	Good form and structure.
275	Crape myrtle	7	5	High	-	SCCo	Remove	Yes	Good form and structure.

# Preliminary Tree Disposition

Mountain View Transit Center Grade Separation & Access Project  
Mountain View, CA

July 2019



Tree No.	Species	Trunk Diameter (in.)	Condition 1=poor 5=excellent	Suitability for Preservation	Heritage? (MV trees)	Jurisdiction	Disposition	SCCo Permit?	Comments
276	Crape myrtle	7	5	High	-	SCCo	Remove	Yes	Good form and structure.
277	Crape myrtle	8	5	High	-	SCCo	Remove	Yes	Good form and structure; pruned on south for transit clearance.
278	Crape myrtle	8	5	High	-	SCCo	Remove	Yes	Good form and structure; pruned on south for transit clearance.
279	Crape myrtle	7	5	High	-	SCCo	Remove	Yes	Good form and structure; pruned on south for transit clearance.
280	Crape myrtle	8	5	High	-	SCCo	Remove	Yes	Good form and structure; pruned on south for transit clearance.
281	Crape myrtle	7	5	High	-	SCCo	Remove	Yes	Good form and structure; pruned on south for transit clearance.
282	Crape myrtle	7	5	High	-	SCCo	Remove	Yes	Good form and structure; pruned on south for transit clearance.
283	Crape myrtle	7	4	High	-	SCCo	Remove	Yes	Trunk bows east; dense crown.
284	Crape myrtle	6	5	High	-	SCCo	Remove	Yes	Good form and structure; dense crown.
285	Crape myrtle	5	5	High	-	SCCo	Remove	Yes	Good form and structure; dense crown.
286	Crape myrtle	6	5	High	-	SCCo	Remove	Yes	Good form and structure; dense crown.
287	Crape myrtle	5,4,4,3,3,2, 2,1,1,1	5	High	No	MV	Remove	-	Multiple attachments at base; dense crown.
288	Crape myrtle	3,3,2,2,2,1	5	High	No	MV	Remove	-	Multiple attachments at base; dense crown.
289	Crape myrtle	5,4,4,4,3,3, 3,2,2,2	4	High	No	MV	Remove	-	Multiple attachments at base; slightly thin crown.
290	Crape myrtle	4,4,3,3,3,2, 2,2	4	High	No	MV	Remove	-	Multiple attachments at base; dense crown.
291	Evergreen pear	12	4	Moderate	No	MV	Preserve	-	Multiple attachments at 6' with narrow attachments; dense crown.
292	Evergreen pear	15	4	Moderate	Yes	MV	Preserve	-	Multiple attachments at 6' with narrow attachments; dense crown.
293	Evergreen pear	6	2	Low	No	MV	Preserve	-	Crown mostly dead.
294	Camphor	16	3	Moderate	Yes	MV	Preserve	-	Codominant trunks at 6'; twig dieback in upper crown.
295	Camphor	18	3	Moderate	Yes	MV	Preserve	-	Multiple trunks at 6'; twig dieback in upper crown.
296	Camphor	19	3	Moderate	Yes	MV	Preserve	-	Codominant trunks at 6'; twig dieback in upper crown.
297	London plane	13	5	High	No	MV	Preserve	-	Utility vaults and backflow valve near base; surface roots; good form and structure; dense crown.
298	Eastern redbud	9	4	Moderate	No	MV	Preserve	-	Surface roots; suppressed.
299	London plane	13	5	High	No	MV	Preserve	-	Good form and structure; utility vault and FW near base; dense crown.
300	London plane	8	4	High	No	MV	Preserve	-	Good form and structure; slightly crowded form.

# Preliminary Tree Disposition

Mountain View Transit Center Grade Separation & Access Project  
Mountain View, CA

July 2019



Tree No.	Species	Trunk Diameter (in.)	Condition 1=poor 5=excellent	Suitability for Preservation	Heritage? (MV trees)	Jurisdiction	Disposition	SCCo Permit?	Comments
301	Canary Island date palm	32	5	High	Yes	MV	Preserve	-	25' brown trunk height.
302	London plane	12	5	High	No	MV	Remove	-	Good form and structure; dense crown.
303	London plane	13	5	High	No	MV	Remove	-	Good form and structure; dense crown.
304	London plane	13	5	High	No	MV	Remove	-	Good form and structure; dense crown.
305	London plane	15	5	High	Yes	MV	Remove	-	Good form and structure; dense crown.
306	London plane	17	4	Moderate	Yes	MV	Remove	-	Pruned on north for train clearance; heavy lateral limb over bus shelter.
307	London plane	14	4	High	No	MV	Remove	-	Asymmetrical crown south; pruned on north for train clearance.
308	London plane	14	4	High	No	MV	Remove	-	Asymmetrical crown south; pruned on north for train clearance.
309	London plane	14	4	High	No	MV	Remove	-	Asymmetrical crown south; pruned on north for train clearance.
310	London plane	15	4	High	Yes	MV	Remove	-	Asymmetrical crown south; pruned on north for train clearance.
311	London plane	18	4	High	Yes	MV	Remove	-	Asymmetrical crown south; pruned on north for train clearance.
312	Japanese flowering cherry	1	4	High	No	MV	Preserve	-	Good young tree.
313	Japanese flowering cherry	7	2	Low	No	MV	Preserve	-	Large stems removed; half of crown remains.
314	Little leaf linden	7	4	High	No	MV	Preserve	-	Good form, fair structure; dense crown.
315	Little leaf linden	8	4	High	No	MV	Preserve	-	Good form, fair structure; dense crown.
316	Little leaf linden	6	3	Low	No	MV	Remove	-	Small, slightly thin crown; stunted form.
317	Little leaf linden	12	3	Moderate	No	MV	Remove	-	4' trunk wound on south; dense crown.
318	Little leaf linden	9	4	Moderate	No	MV	Preserve	-	Dense, spreading crown; fair structure.
319	Little leaf linden	8	4	Moderate	No	MV	Preserve	-	Corrected lean north; good form.
320	Little leaf linden	10	4	High	No	MV	Preserve	-	Dense, spreading crown; low hanging branches.
321	Little leaf linden	8	4	High	No	MV	Preserve	-	Dense, spreading crown; low hanging branches.
322	Japanese flowering cherry	5	2	Low	No	MV	Preserve	-	In severe decline.
323	Japanese flowering cherry	5	2	Low	No	MV	Preserve	-	In severe decline.
324	Sawleaf zelkova	7	3	Moderate	No	MV	Remove	-	Fair form and structure; twig dieback.
325	Sawleaf zelkova	9	4	Moderate	No	MV	Remove	-	Good form, fair structure; spreading crown.
326	Sawleaf zelkova	9	2	Low	No	MV	Remove	-	Half of crown in decline.
327	Sawleaf zelkova	12	2	Low	No	MV	Remove	-	Half of crown in decline.
328	Sawleaf zelkova	16	3	Moderate	Yes	MV	Remove	-	Spreading crown; twig dieback; trunk growing into grate.

# Preliminary Tree Disposition

Mountain View Transit Center Grade Separation & Access Project  
Mountain View, CA

July 2019



Tree No.	Species	Trunk Diameter (in.)	Condition 1=poor 5=excellent	Suitability for Preservation	Heritage? (MV trees)	Jurisdiction	Disposition	SCCo Permit?	Comments
329	Sawleaf zelkova	15	4	Moderate	Yes	MV	Remove	-	Spreading crown; minor twig dieback.
330	Sawleaf zelkova	12	3	Low	No	MV	Remove	-	Twig and branch dieback.
331	Sawleaf zelkova	7	2	Low	No	MV	Remove	-	Mostly dead.
332	Sawleaf zelkova	7	3	Moderate	No	MV	Remove	-	Small, slightly thin crown.
333	Coast live oak	25	4	High	Yes	MV	Remove	-	Good form, fair structure; dense, spreading crown.
334	Coast live oak	20,20,14	3	Moderate	Yes	MV	Remove	-	Multiple trunks at base; spreading crown.
335	Sawleaf zelkova	6	3	Low	No	MV	Remove	-	Very thin crown.
336	Sawleaf zelkova	9	3	Moderate	No	MV	Preserve	-	Fair form and structure; slightly thin crown.
337	Sawleaf zelkova	10	3	Low	No	MV	Preserve	-	Twig dieback on west side of crown.
338	Sawleaf zelkova	10	4	Moderate	No	MV	Preserve	-	Good form and structure; slightly thin crown.
339	Sawleaf zelkova	8	1	Low	No	MV	Preserve	-	Mostly dead.
340	Sawleaf zelkova	11	4	Moderate	No	MV	Preserve	-	Good form and structure; slightly thin crown.
341	Sawleaf zelkova	11	4	High	No	MV	Preserve	-	Good form, fair structure; spreading crown.
342	Sawleaf zelkova	8	3	Moderate	No	MV	Preserve	-	Fair form and structure; slightly thin crown.
343	Sawleaf zelkova	10	4	Moderate	No	MV	Remove	-	Good form, fair structure; slightly thin crown.
344	Evergreen pear	13	4	Moderate	No	MV	Remove	-	Fair structure; dense crown.
345	Sawleaf zelkova	7	3	Moderate	No	MV	Remove	-	Twig and branch dieback.
346	Evergreen pear	12	3	Moderate	No	MV	Remove	-	Twig dieback in upper crown.
347	Sawleaf zelkova	5	3	Moderate	No	MV	Remove	-	Small crown.
348	Evergreen pear	9	3	Moderate	No	MV	Remove	-	Some twig and branch dieback.
349	Evergreen pear	9	4	Moderate	No	MV	Remove	-	Good form, fair structure.
350	Sawleaf zelkova	8	3	Moderate	No	MV	Remove	-	Fair form and structure; twig dieback.
351	Sawleaf zelkova	8	3	Low	No	MV	Preserve	-	Twig and branch dieback on west.
352	London plane	15	4	High	Yes	MV	Remove	-	Street tree; good form and structure; slightly thin crown.
353	London plane	11	4	High	No	MV	Remove	-	Street tree; good form and structure; slightly thin crown.
354	London plane	12	4	High	No	MV	Preserve	-	Street tree; good form and structure; slightly thin crown.
355	Sawleaf zelkova	9	1	Low	No	MV	Preserve	-	Mostly dead.
356	Sawleaf zelkova	6	4	High	No	MV	Preserve	-	Good form; small, dense crown.

# Preliminary Tree Disposition

Mountain View Transit Center Grade Separation & Access Project  
Mountain View, CA

July 2019



Tree No.	Species	Trunk Diameter (in.)	Condition 1=poor 5=excellent	Suitability for Preservation	Heritage? (MV trees)	Jurisdiction	Disposition	SCCo Permit?	Comments
357	Sawleaf zelkova	9	3	Moderate	No	MV	Preserve	-	Spreading, slightly thin crown; trunk wound; heavy lateral limb over parking.
358	Sawleaf zelkova	5	3	Moderate	No	MV	Preserve	-	Small crown; poor structure.
359	Sawleaf zelkova	4	3	Low	No	MV	Preserve	-	Small crown; twig dieback.
360	Sawleaf zelkova	3	2	Low	No	MV	Preserve	-	Small crown; twig and branch dieback.
361	Sawleaf zelkova	6	3	Moderate	No	MV	Preserve	-	Basal wound; minor twig dieback.
362	Sawleaf zelkova	5	2	Low	No	MV	Preserve	-	Small, very thin crown.
363	Sawleaf zelkova	5	2	Low	No	MV	Preserve	-	Very thin crown.
364	Sawleaf zelkova	7	4	Moderate	No	MV	Preserve	-	Good form; compact crown.
365	Sawleaf zelkova	6	3	Moderate	No	MV	Preserve	-	Small crown; twig dieback.
366	Sawleaf zelkova	11	2	Low	No	MV	Preserve	-	Twig and branch dieback in upper crown.
367	Sawleaf zelkova	9	3	Moderate	No	MV	Preserve	-	Small crown; twig dieback.
368	Sawleaf zelkova	15	3	Moderate	Yes	MV	Preserve	-	Twig and branch dieback on west.
369	Sawleaf zelkova	13	3	Moderate	No	MV	Preserve	-	Spreading crown; twig dieback.
370	Sawleaf zelkova	15	3	Low	Yes	MV	Preserve	-	Spreading crown; twig and branch dieback.
371	Sawleaf zelkova	8	3	Moderate	No	MV	Preserve	-	Good form; twig dieback.
372	Sawleaf zelkova	7	3	Moderate	No	MV	Preserve	-	Thin crown; twig dieback.
373	Sawleaf zelkova	6	3	Moderate	No	MV	Preserve	-	Thin crown; twig dieback.
374	Sawleaf zelkova	7	3	Moderate	No	MV	Preserve	-	Thin crown; twig dieback.
375	Sawleaf zelkova	9	3	Moderate	No	MV	Remove	-	Thin crown; twig dieback.
376	Sawleaf zelkova	9	4	High	No	MV	Preserve	-	Good form; spreading crown; minor twig dieback.
377	Sawleaf zelkova	3	2	Low	No	MV	Preserve	-	Multiple trunk wounds; small crown; leans east.
378	Sawleaf zelkova	7	3	Moderate	No	MV	Preserve	-	Fair form and structure; twig dieback.
379	Sawleaf zelkova	9	3	Moderate	No	MV	Preserve	-	Good form; thin crown.
380	Sawleaf zelkova	8	2	Low	No	MV	Preserve	-	Thin crown; twig and branch dieback.
381	Sawleaf zelkova	7	4	Moderate	No	MV	Preserve	-	Good form; slightly thin crown.
382	Sawleaf zelkova	5	3	Moderate	No	MV	Preserve	-	Small, slightly thin crown.
383	Sawleaf zelkova	8	2	Low	No	MV	Preserve	-	Crown half dead.
384	London plane	14	4	High	No	MV	Preserve	-	Street tree; crowded form.

# Preliminary Tree Disposition

Mountain View Transit Center Grade Separation & Access Project  
Mountain View, CA

July 2019



Tree No.	Species	Trunk Diameter (in.)	Condition 1=poor 5=excellent	Suitability for Preservation	Heritage? (MV trees)	Jurisdiction	Disposition	SCCo Permit?	Comments
385	London plane	14	4	High	No	MV	Preserve	-	Street tree; good form; minor twig dieback.
386	London plane	11	4	High	No	MV	Preserve	-	Street tree; crowded form.
387	London plane	10	4	High	No	MV	Preserve	-	Street tree; crowded form.
388	London plane	11	4	High	No	MV	Preserve	-	Street tree; crowded form.
389	London plane	12	4	High	No	MV	Preserve	-	Street tree; crowded form.
390	London plane	11	4	High	No	MV	Preserve	-	Street tree; crowded form.
391	London plane	8	4	High	No	MV	Preserve	-	Street tree; crowded form.
392	London plane	12	4	High	No	MV	Preserve	-	Street tree; crowded form; twig dieback.
393	London plane	10	4	High	No	MV	Preserve	-	Street tree; crowded form.
394	London plane	12	4	High	No	MV	Preserve	-	Street tree; crowded form.
395	London plane	17	4	High	Yes	MV	Preserve	-	Street tree; crowded form.
396	Camphor	20	4	Moderate	Yes	MV	Preserve	-	Street tree; spreading crown; minor twig dieback.
397	California black walnut	10,8,6,6,6,5	3	Moderate	Yes	MV	Preserve	-	Multiple trunks at 1'; base covered in ivy; on slope; slightly thin crown.
398	Eastern redbud	7	3	Low	No	MV	Preserve	-	Twisted form; slightly thin crown.
399	Coast live oak	6,5,4	4	High	Yes	MV	Preserve	-	Multiple trunks at 1'; dense crown.
400	Hollyleaf cherry	3	3	Moderate	No	MV	Preserve	-	Crowded by adjacent trees.
401	Hollyleaf cherry	6,3	3	Moderate	No	MV	Preserve	-	Crowded by adjacent trees.
402	Coast live oak	22,18,15	4	Moderate	Yes	MV	Preserve	-	Off-site; multiple trunks at 4'; spreading crown.
403	Hollyleaf cherry	3	3	Moderate	No	MV	Preserve	-	Full crown; branches to ground.
404	California black walnut	8	2	Low	No	MV	Preserve	-	Top of crown dead.
405	Chinese pistache	6	4	Moderate	No	MV	Preserve	-	Typical form and structure; compact crown.
406	Chinese pistache	10	4	High	No	MV	Preserve	-	Good form, fair structure; dense crown.
407	Ginkgo	2	1	Low	No	MV	Preserve	-	Very thin crown.
408	Ginkgo	2	1	Low	No	MV	Preserve	-	Very thin crown; suppressed.
409	California black walnut	17	2	Low	Yes	MV	Preserve	-	Thin crown; branch dieback.
410	Coast live oak	8	3	Moderate	Yes	MV	Preserve	-	Trunk bows north; crowded.
411	Coast live oak	14	3	Moderate	Yes	MV	Preserve	-	Asymmetrical crown; crowded.



# Preliminary Tree Disposition

Mountain View Transit Center Grade Separation & Access Project  
Mountain View, CA

July 2019



Tree No.	Species	Trunk Diameter (in.)	Condition 1=poor 5=excellent	Suitability for Preservation	Heritage? (MV trees)	Jurisdiction	Disposition	SCCo Permit?	Comments
412	Coast live oak	13,10	4	High	Yes	MV	Preserve	-	Codominant trunks at 1'; spreading, slightly thin crown.
413	Coast live oak	14	4	High	Yes	MV	Preserve	-	Multiple attachments at 6'; spreading crown.
414	California black walnut	7	4	Moderate	No	MV	Preserve	-	Fair form and structure; dense crown.
415	Coast live oak	6	3	Moderate	Yes	MV	Preserve	-	On slope; crowded.
416	Eastern redbud	4	2	Low	No	MV	Preserve	-	Crowded; twig dieback.
417	Coast live oak	10	3	Moderate	Yes	MV	Preserve	-	On slope; crowded.
418	Coast live oak	9,4	3	Moderate	Yes	MV	Preserve	-	On slope; codominant trunks at 2'; curve in trunk.
419	Coast live oak	4	3	Moderate	Yes	MV	Preserve	-	On slope; suppressed.
420	Jacaranda	8,6,5	3	Moderate	-	SCCo	Preserve	-	Spreading form; twig dieback.
421	Ginkgo	6	4	Moderate	-	SCCo	Preserve	-	Fair form; dense crown; chlorotic.
422	Ginkgo	3	4	Moderate	-	SCCo	Preserve	-	Good young tree.
423	Jacaranda	4,3,2,2	2	Low	-	SCCo	Preserve	-	Thin crown; suppressed
424	Coast live oak	16	5	High	-	SCCo	Preserve	-	Good form and structure; dense crown; tussock moth.
425	Coast live oak	17	5	High	-	SCCo	Preserve	-	Good form and structure; dense crown; tussock moth.
426	Coast live oak	32	5	High	-	SCCo	Remove	Yes	Good form and structure; dense crown; tussock moth.
427	Coast live oak	14	3	Moderate	-	SCCo	Remove	Yes	Good form; slightly thin crown.
428	Eastern redbud	12	3	Moderate	-	SCCo	Remove	Yes	Fair form and structure; crowded.
429	Ginkgo	9	4	Moderate	-	SCCo	Remove	Yes	Curve in trunk; fair form and structure; crowded.
430	Eastern redbud	7	3	Moderate	-	SCCo	Remove	Yes	Fair form and structure; twig dieback.
431	Eastern redbud	8	2	Low	-	SCCo	Remove	Yes	Asymmetrical form; twig dieback.
432	Eastern redbud	6	2	Low	-	SCCo	Remove	Yes	Poor form; dieback.
433	Coast live oak	16	4	High	-	SCCo	Remove	Yes	Good form, fair structure.
434	Eastern redbud	5	2	Low	-	SCCo	Remove	Yes	Poor form and structure; dieback.
435	Evergreen ash	8,7,6	2	Low	-	SCCo	Remove	Yes	Multiple trunks at base; high, small crown.
436	Eastern redbud	6	2	Low	-	SCCo	Remove	Yes	Poor form and structure; dieback.
437	Coast live oak	15	3	Moderate	-	SCCo	Preserve	-	Trunk wound; slightly thin crown.
438	Coast live oak	18	4	High	-	SCCo	Preserve	-	Good form and structure; minor twig dieback.
439	Olive	12	4	High	No	MV	Remove	-	Good form and structure; compact crown.

# Preliminary Tree Disposition

Mountain View Transit Center Grade Separation & AccessProject  
Mountain View, CA

July 2019



Tree No.	Species	Trunk Diameter (in.)	Condition 1=poor 5=excellent	Suitability for Preservation	Heritage? (MV trees)	Jurisdiction	Disposition	SCCo Permit?	Comments
440	Olive	12	4	High	No	MV	Preserve	-	Good form and structure.
441	Chinese pistache	16	3	Low	Yes	MV	Preserve	-	Good form; slightly thin crown; one dead limb.
442	Chinese pistache	12	4	High	No	MV	Preserve	-	Fair structure; dense crown.
443	Chinese pistache	17	3	Moderate	Yes	MV	Preserve	-	Good form; slightly thin crown.
444	Chinese pistache	12	1	Low	No	MV	Preserve	-	All but dead.
445	Chinese elm	23	4	Moderate	-	SCCo	Remove	Yes	Full, dense crown; fair structure.
446	Coast live oak	33	4	Moderate	-	SCCo	Remove	Yes	Dense, asymmetrical crown; crowded form.
447	Chinese elm	11	3	Moderate	-	SCCo	Remove	Yes	Fair form and structure; crowded.
448	Coast live oak	12,11,9	3	Moderate	-	SCCo	Remove	Yes	Multiple attachments at base; growing into fence.