

December 1, 2015

Patrick J. Diaz  
Crestwood Communities  
510 W. Citrus Edge Street  
Glendora, CA 91740

RE: Historical/Archaeological Resources Records Search  
Assessor's Parcel Number 1011-321-13  
4975 Mission Boulevard, City of Montclair  
San Bernardino County, California  
CRM TECH Contract #2993

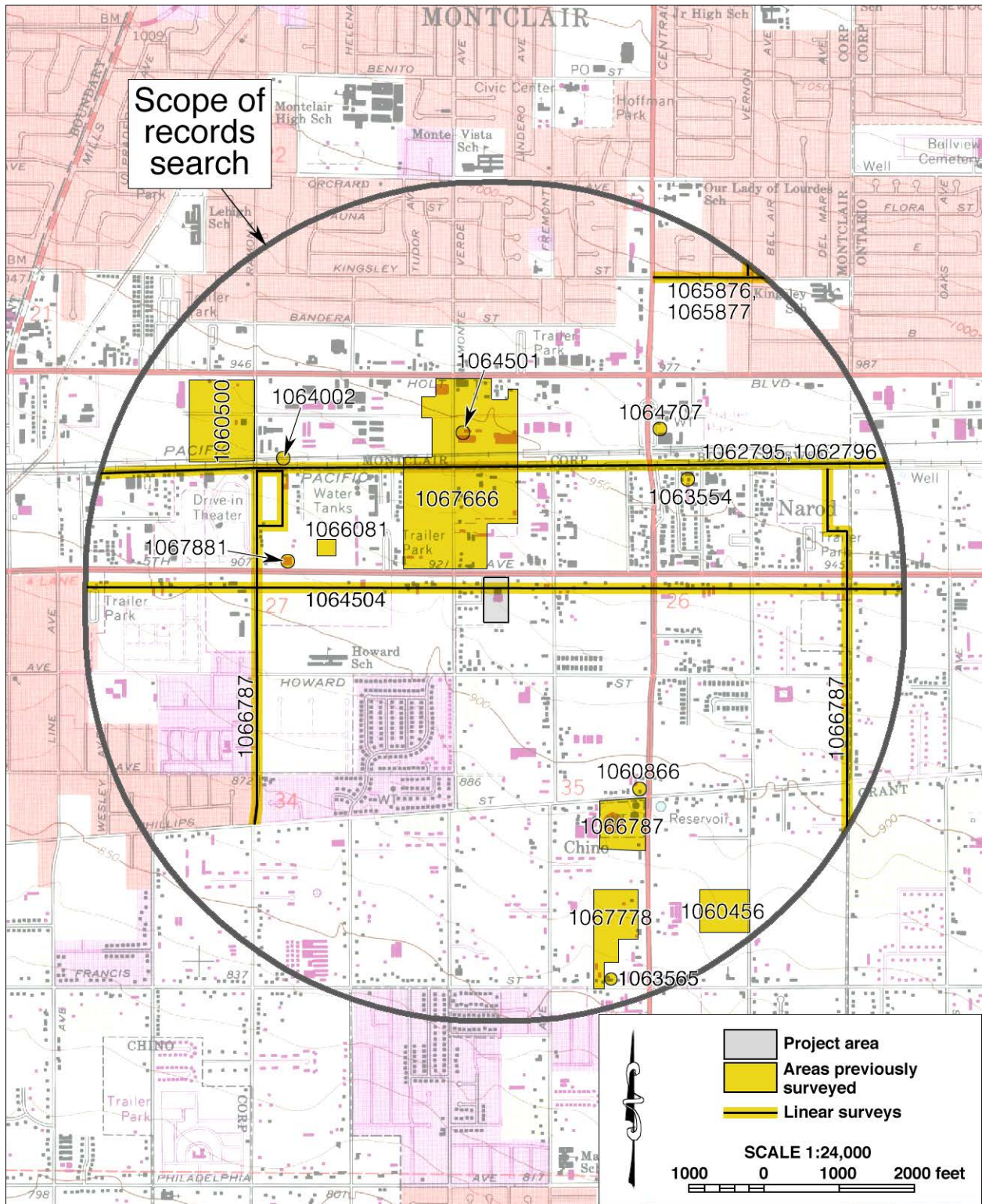
Dear Mr. Diaz:

I am writing to present to you the results of a historical/archaeological resources records search we have completed on the property referenced above. The records search was conducted on November 23, 2015, at the South Central Coastal Information Center (SCCIC), located on the campus of California State University, Fullerton. The SCCIC is the State of California's official cultural resource records repository for the County of San Bernardino, and a part of the California Historical Resource Information System established and maintained under the auspices of the California Office of Historic Preservation.

During the records search, maps and records on file were examined for previously identified cultural resources and existing cultural resources reports within a one-mile radius of the project area. Previously identified cultural resources include properties designated as California Historical Landmarks, Points of Historical Interest, or San Bernardino County Landmarks, as well as those listed in the National Register of Historic Places, the California Register of Historical Resources, or the California Historical Resources Inventory.

According to SCCIC records, a linear survey completed in 2004 apparently traversed the northern portion of project area in an east-west direction, but no cultural resources were previously recorded on or adjacent to the property. Outside the project area but within a one-mile radius, SCCIC records show 17 additional studies on various tracts of land or linear features, collectively covering less than 25% of the land within the scope of the records search (see map on p. 2 and attached bibliography).

As a result of these and other similar studies nearby, eight historical/ archaeological sites and one "pending" site were reported to the SCCIC within the one-mile radius, including seven buildings, the South Pacific Railroad, and a camp site used during the 1870s Juan Bautista de Anza Expeditions (see table on p. 3). All of these sites dated to the historic period, and no cultural resources of prehistoric—i.e., Native American—origin have been identified within the scope of the records search. Most of the sites were clustered along Monte Vista Avenue and State Street to the north of the project location, and none of them was found in the immediate project vicinity.

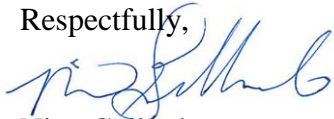


Previous cultural resources studies in the vicinity of the project area, listed by SCCIC file numbers. Locations of historical/archaeological sites are not shown per confidentiality agreement with the SCCIC.

<b>Previously Recorded Cultural Resources within the Scope of the Records Search</b>		
<b>Site No.</b>	<b>Date Recorded</b>	<b>Description</b>
36-010330	Ashkar 1999	Southern Pacific (now Union Pacific) Railroad
36-027152	Paul and Hilton 2012	Industrial building
36-027153	Paul and Hilton 2012	Commercial building
36-027154	Paul and Hilton 2012	Single-family residence
36-027155	Paul and Hilton 2012	Single-family residence
36-027156	Paul and Hilton 2012	Commercial building
36-027157	Paul and Hilton 2012	Single-family residence
36-027158	Paul and Hilton 2012	Commercial building
P1083-4H	-	Approximate location of de Anza Expedition camp site

Thank you for this opportunity to be of service. If you have any question or need further information regarding the records search results, please do not hesitate to contact our office.

Respectfully,



Nina Gallardo  
Project Archaeologist  
CRM TECH  
1016 E. Cooley Drive, Suite A/B  
Colton, CA 92324  
(909) 824-6400  
Email: ngallardo@crmtech.us

# Report List

2993 - Mission Montclair

Report No.	Other IDs	Year	Author(s)	Title	Affiliation	Resources
SB-00456	NADB-R - 1060456; Voided - 76-12.4	1976	HEARN, JOSEPH E.	ARCHAEOLOGICAL - HISTORICAL RESOURCES ASSESSMENT OF LAND AREA BOUNDED BY CENTRAL AVENUE ON THE WEST, FRANCIS STREET ON THE SOUTH, VERNON AVENUE ON THE EAST, AND PHILLIPS STREET ON THE NORTH	SAN BERNARDINO COUNTY MUSEUM ASSOCIATION	36-004253, 36-004255, 36-004268, 36-004271, 36-004272, 36-004411, 36-004418, 36-005361, 36-005362, 36-005568, 36-006793, 36-007076, 36-007077, 36-007078, 36-007079, 36-007080, 36-007081, 36-007082, 36-007084, 36-007085, 36-007086, 36-007087, 36-007088, 36-007089, 36-007090, 36-007091, 36-007092, 36-007093, 36-007094, 36-007095, 36-007096
SB-00500	NADB-R - 1060500; Voided - 77-5.10	1977	HEARN, JOSEPH E.	ARCHAEOLOGICAL - HISTORICAL RESOURCES ASSESSMENT OF APPROXIMATELY NINETEEN ACRES LOCATED WEST OF RAMONA AVENUE AND SOUTH OF HOLT BOULEVARD IN THE MONTCLAIR AREA	SAN BERNARDINO COUNTY MUSEUM ASSOCIATION	36-002257, 36-002910, 36-004252, 36-004253, 36-004255, 36-004268, 36-004271, 36-004272, 36-004411, 36-004418, 36-005361, 36-005362, 36-005568, 36-006793, 36-007076, 36-007077, 36-007078, 36-007079, 36-007080, 36-007081, 36-007082, 36-007084, 36-007085, 36-007086, 36-007087, 36-007088, 36-007089, 36-007090, 36-007091, 36-007092, 36-007093, 36-007094, 36-007095, 36-007096
SB-00866	NADB-R - 1060866; Voided - 79-11.9	1979	SAN BERNARDINO COUNTY MUSEUM ASSOCIATION	CULTURAL RESOURCES ASSESSMENT: CENTRAL AVENUE AT PHILLIPS BOULEVARD, HO 7304	SAN BERNARDINO COUNTY MUSEUM ASSOCIATION	36-002257, 36-002910, 36-004252, 36-004253, 36-004255, 36-004268, 36-004271, 36-004272, 36-004411, 36-004418, 36-005361, 36-005362, 36-005568, 36-006793, 36-007076, 36-007077, 36-007078, 36-007079, 36-007080, 36-007081, 36-007082, 36-007084, 36-007085, 36-007086, 36-007087, 36-007088, 36-007089, 36-007090, 36-007091, 36-007092, 36-007093, 36-007094, 36-007095, 36-007096
SB-02795	NADB-R - 1062795	1991	HAMPSON, R. PAUL, JAMES J. SCHMIDT, AND JUNE A. SCHMIDT	CULTURAL RESOURCE INVESTIGATION: CAJON PIPELINE PROJECT	GREENWOOD & ASSOCIATES	36-002257, 36-002910, 36-004252, 36-004253, 36-004255, 36-004268, 36-004271, 36-004272, 36-004411, 36-004418, 36-005361, 36-005362, 36-005568, 36-006793, 36-007076, 36-007077, 36-007078, 36-007079, 36-007080, 36-007081, 36-007082, 36-007084, 36-007085, 36-007086, 36-007087, 36-007088, 36-007089, 36-007090, 36-007091, 36-007092, 36-007093, 36-007094, 36-007095, 36-007096
SB-02796	NADB-R - 1062796	1993	MCKENNA, JEANETTE A.	CULTURAL RESOURCES INVESTIGATIONS, SITE INVENTORY AND EVALUATIONS, THE CAJON PIPELINE CORRIDOR, LOS ANGELES AND SAN BERNARDINO COUNTIES	MCKENNA ET AL	36-002257, 36-002910, 36-004252, 36-004253, 36-004255, 36-004268, 36-004271, 36-004272, 36-004411, 36-004418, 36-005361, 36-005362, 36-005568, 36-006793, 36-007076, 36-007077, 36-007078, 36-007079, 36-007080, 36-007081, 36-007082, 36-007084, 36-007085, 36-007086, 36-007087, 36-007088, 36-007089, 36-007090, 36-007091, 36-007092, 36-007093, 36-007094, 36-007095, 36-007096

# Report List

2993 - Mission Montclair

Report No.	Other IDs	Year	Author(s)	Title	Affiliation	Resources
SB-03554	NADB-R - 1063554	1998	BRECHBIEL, BRANT	CULTURAL RESOURCES RECORDS SEARCH AND SURVEY REPORT FOR A PACIFIC BELL MOBILE SERVICES TELECOMMUNICATIONS FACILITY: CM 193-01, NEAR THE CITY OF MONTCLAIR, CA. 4PP	CHAMBERS GROUP, INC	
SB-03565	NADB-R - 1063565	1999	DUKE, CURT	CULTURAL RESOURCE ASSESSMENT FOR PBMS FACILITY CM 353-01, COUNTY OF SAN BERNARDINO, CA. 4PP	LSA	
SB-04002	NADB-R - 1064002	2004	HARPER, CAPRICE	CULTURAL RESOURCE ASSESSMENT: CINGULAR WIRELESS FACILITY #SB 469-01, MONTCLAIR, SAN BERNARDINO COUNTY, CA. 31PP	LSA	
SB-04501	NADB-R - 1064501	2004	KYLE, CAROLYN	CULTURAL RESOURCES ASSESSMENT FOR AT&T WIRELESS FACILITY 951-003-003A LOCATED AT 5179 BROOK ST, CITY OF MONTCLAIR, SAN BERNARDINO COUNTY, CA. 10PP	KYLE CONSULTING	
SB-04504	NADB-R - 1064504	2004	SHEPARD, RICHARD	PRELIMINARY CULTURAL RESOURCES ASSESSMENT: MISSION BLVD CORRIDOR IMPROVEMENTS, CITY OF MONTCLAIR, SAN BERNARDINO COUNTY. 6PP	BONTERRA CONSULTING	
SB-04707	NADB-R - 1064707	2006	BONNIER, WAYNE H.	CULTURAL RESOURCE RECORDS SEARCH AND SITE VISIT RESULTS FOR CINGULAR TELECOMMUNICATIONS FACILITY CANDIDATE LSANCA8005E (MONTE VISTA), 10757 CENTRAL AVENUE, MONTCLAIR, SAN BERNARDINO COUNTY, CALIFORNIA		
SB-05876	NADB-R - 1065876	2007	Bodmer, Clarence, Daniel Ballester, and Melissa Hernandez	Identification and Evaluation of Historic Properties: San Antonio Channel (West Edison) Recycled Water Pipeline Project Addition in the Cities of Ontario and Montclair, San Bernardino County, California.	CRM Tech	
SB-05877	NADB-R - 1065877	2007	Tang, Bai "Tom"	Historical/Archaeological Resources Survey: San Antonio Channel Recycled Water Pipeline Project Alternatives/Extensions, Cities of Ontario and Montclair, San Bernardino County, California.	CRM Tech	

# Report List

2993 - Mission Montclair

Report No.	Other IDs	Year	Author(s)	Title	Affiliation	Resources
SB-06081	NADB-R - 1066081	2008	Wlodarski, Robert J.	A Record Search and Field Reconnaissance Phase for the Proposed Bechtel Wireless Telecommunications Site SV0083 (Jack's Basket), located at 4672 Mission Boulevard, Montclair, California 91763.	CARE	
SB-06787	NADB-R - 1066787	2008	Tang, Bai "Tom", Deirdre Encarnacion, and Daniel Ballester	Historical/Archaeological Resources Survey Report: Chino Groundwater Basin Dry-Year Yield Program Expansion, Los Angeles, Riverside and San Bernardino Counties, California.	CRM Tech	
SB-07666	NADB-R - 1067666	2013	Hilton, Elizabeth, Daniel Paul, and Shelly Long	Historic Property Survey Report: Monte Vista Avenue Grade Separation Project, City of Montclair, San Bernardino County, California.		36-010330
SB-07778	NADB-R - 1067778	2014	Stropes, Tracy A. and Brian F. Smith	Phase I Cultural Resources Survey for the Central and Francis Residential Project, City of Chino, California.	Brian F. Smith & Associates	
SB-07881	NADB-R - 1067881	2014	Fulton, Phil	Cultural Resource Assessment Class I Inventory: Verizon Wireless Services, Merle Facility, City of Montclair, County of San Bernardino, California.	LSA	