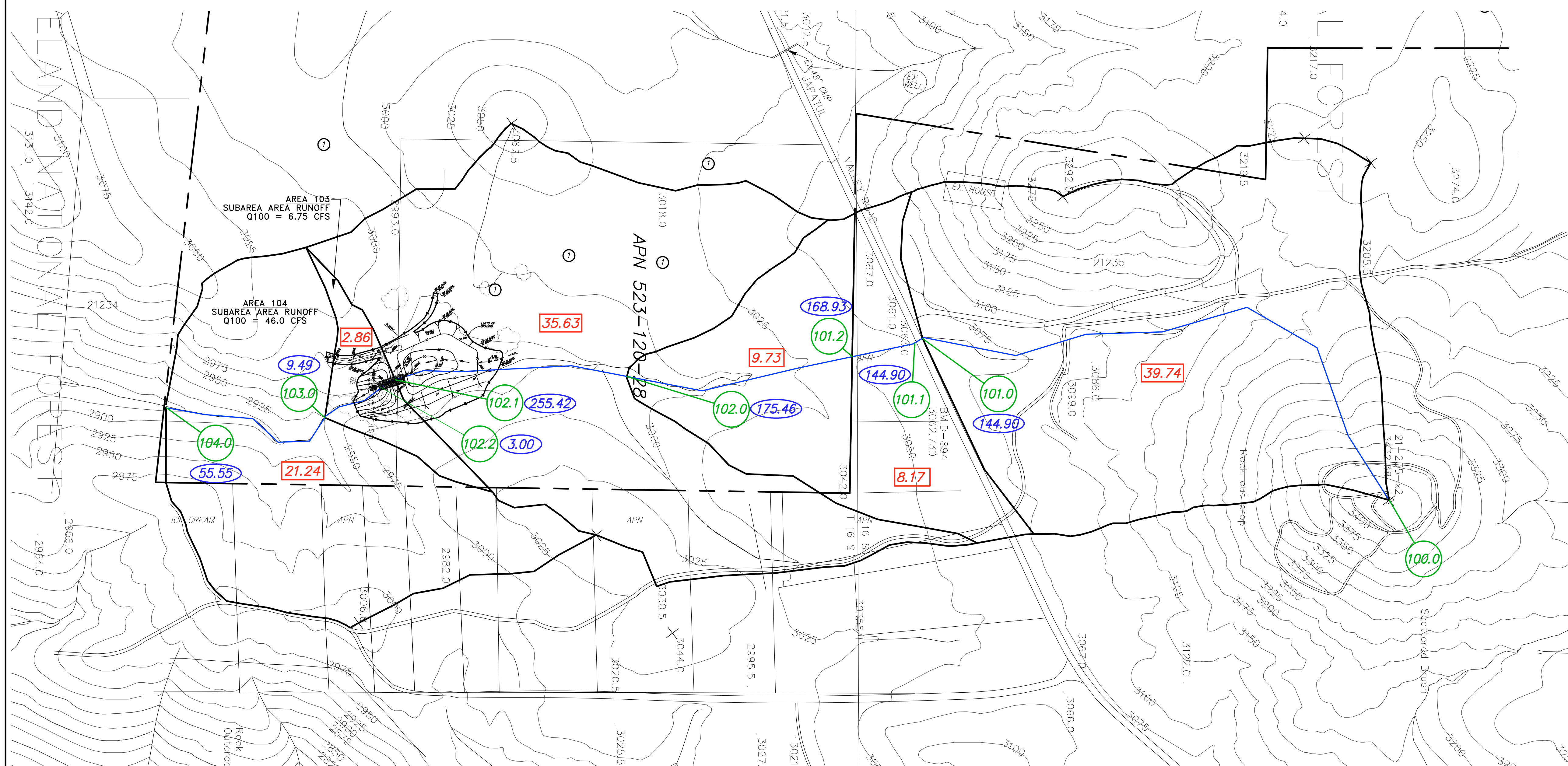


HYDROLOGY – PROPOSED CONDITIONS

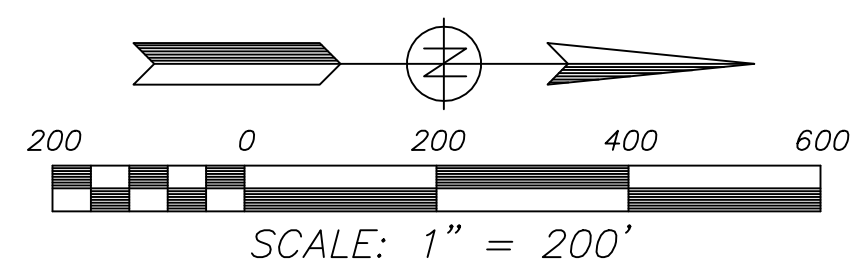


LEGEND

- EXIST. CONTOUR 3150
- PROPERTY LINE P/L
- WATERCOURSE ROUTE
- Q100 (CFS) 144.90
- NODE NUMBER 100.0
- DRAINAGE AREA (ACRES) 39.74

ONSITE STORM WATER RUNOFF

NODE 103.00 Q100 = 2.8 CFS (FLOWMASTER)
 AREA 103 RUNOFF Q100 = 6.75 CFS (ADJUSTED)
 AREA 104 RUNOFF Q100 = 46.00 CFS (ADJUSTED)
 NODE 104.00 Q100 = 55.55 CFS



PREPARED BY:
 NAME: **CEA ENGINEERING**
 ADDRESS: 8369 VICKERS ST., STE. C
 SAN DIEGO, CA. 92111
 PHONE NO. (858) 277-0441
 PROJECT ADDRESS:
 23137 JAPATUL VALLEY RD.
 ALPINE, CA. 92110
 PROJECT NAME:
 JAPATUL DESILT BASIN

REVISION 1: _____
 REVISION 2: _____
 REVISION 3: _____
 REVISION 4: _____
 REVISION 5: _____
 REVISION 6: _____
 REVISION 7: _____
 REVISION 8: _____
 REVISION 9: _____
 REVISION 10: _____
 ORIG. DATE: 11-13-17
 SHEET 2 OF 2

CEA
 CIVIL ENGINEERING PLANNING LAND SURVEYING
 8369 VICKERS STREET, SUITE C, SAN DIEGO, CALIFORNIA 92111
 PHONE: (858) 277-0441
COASTAL ENGINEERING ASSOCIATES