

Appendix D Biological Resources Reports

Appendix D1: General Biological Assessment

Appendix D2: Focused Burrowing Owl Surveys

Appendix D3: Biological Technical Report for Off-Site Improvements

Appendix D4: General Habitat Suitability Evaluation Off-Site Improvements

Appendices

This page intentionally left blank.



**GENERAL BIOLOGICAL ASSESSMENT
FOR
ONTARIO RANCH BUSINESS CENTER**

**CITY OF ONTARIO
SAN BERNARDINO COUNTY, CALIFORNIA**

**Prepared for:
EPD Solutions, Inc.
2030 Main Street, Suite 1200
Irvine, CA 92614**

**Prepared by:
Hernandez Environmental Services
17037 Lakeshore Drive
Lake Elsinore, CA 92530**

SEPTEMBER 2018
(Updated January 2020)

Table of Contents

1.0	Introduction.....	3
1.1	Project Site Location.....	3
1.2	Project Description.....	3
2.0	Methodology	3
2.1	Literature Review.....	3
2.2	Field Survey	4
3.0	Existing Conditions and Results	4
3.1	Environmental Setting.....	4
3.2	Soils.....	4
3.3	Plant and Habitat Communities	5
3.3.1	Agriculture Fields	5
3.3.2	Disturbed Agriculture Infrastructure.....	5
3.3.3	Stock/Retention Ponds	5
3.3.4	Disturbed Non-Vegetated	5
4.0	Sensitive Biological Resources.....	5
4.1	Threatened and Endangered Species.....	5
4.1.1	Threatened and Endangered Plants.....	6
4.1.2	Threatened and Endangered Animals.....	9
4.1.3	Sensitive Plant Communities	15
4.2	Critical Habitats	15
4.3	Nesting Birds	15
4.4	Wildlife Movement Corridors.....	16
4.5	City, County, Regional, State, or Federal Conservation Plans	16
4.6	State and Federal Jurisdictional Drainages	17
5.0	Project Impacts.....	17
5.1	Impacts to Existing Habitats	17
5.2	Impacts to Sensitive Species	18
5.2.1	Plant Species	18
5.2.2	Animals.....	18
5.3	Impacts to Nesting Birds.....	21

5.4	Impacts to Critical Habitat	21
5.5	Impacts to Wildlife Movement Corridors	21
5.6	Conflict with Local Policies or Ordinances Protecting Biological Resources	21
5.7	Conflict with the Provisions of an Adopted Habitat Conservation Plan, Natural Community Conservation Plan, or Other Approved Local, Regional, or State Habitat Conservation plan	21
5.7	Cumulative Impacts	22
6.0	Recommendations	23
6.1	Sensitive Species	23
7.0	Certification	25
8.0	References	26

FIGURES

Figure 1 – Location Map

Figure 2 – Vicinity Map

Figure 3 – Project Plans

Figure 4 – Habitat Map

APPENDICES

Appendix A – Species List

Appendix B – Species Probability of Occurrence List

Appendix C – Site Photographs

Appendix D – Soils Survey

1.0 Introduction

EPD Solutions, Inc. contracted Hernandez Environmental Services (HES) to conduct a General Biological Assessment (GBA) on Assessor's Parcel Numbers (APN) 1054-011-01, 1054-011-02, 1054-011-04, 1054-021-01, 1054-021-02, 1054-271-01, 1054-271-02, 1054-271-03, 1054-281-01, 1054-281-02, and 1054-281-03 located in the city of Ontario, San Bernardino County, California. The purpose of the GBA is to document the presence/absence of sensitive resources that may be present on the site, to document existing habitats, and generally address biological questions that may be needed for project approval. This GBA will present the results obtained from the July 27, 2018 field survey and will provide recommendations that may be needed to mitigate potential biological impacts from project activities.

1.1 Project Site Location

The approximately 84.1-acre project site is located at the southeast corner of Eucalyptus Avenue and Euclid Avenue in the city of Ontario, San Bernardino County, California (Figure 1). Specifically, the site is located within the Santa Ana del Chino Land Grant of the *Prado Dam 7.5'* U.S. Geological Survey (USGS) topographic quadrangle (Figure 2). Surrounding land uses include residential development to the west and agricultural uses to the north, east, and south. The entire 84.1-acre site has been disturbed by agricultural use.

1.2 Project Description

The proposed project consists of the development of eight warehouse buildings ranging from 46,900 square feet (sf) to 618,353 sf, totaling a maximum development of 1,905,027 SF of warehouse and office uses. Office uses are ancillary to the warehouses and occupy up to 236,000 sf spread across the eight buildings (Figure 3). The proposed project also includes associated parking, landscaping, access roads, and utilities. The proposed industrial park development will impact the entire 84.1-acre project site. Utilities will connect to existing facilities within the adjacent roadways. Offsite impact areas associated with utility installation consist of existing developed roadways. -

2.0 Methodology

2.1 Literature Review

HES conducted a literature review and reviewed aerial photographs and topographic maps of the project site and surrounding areas. The *Prado Dam 7.5'* USGS topographic quadrangle and eight surrounding quadrangles were used to identify sensitive species in the California Natural Diversity

Data Base (CNDDDB). Additional resources reviewed during the literature search included the United States Fish and Wildlife (USFWS) Endangered Species Lists, and the California Native Plant Society's (CNPS) Rare plant lists to obtain species information for the project area.

2.2 Field Survey

On July 27, 2018, HES conducted a field survey of the approximate 84.1-acre project site. Ambient temperature during the field survey was 82° Fahrenheit, sunny, with zero to three mile per hour winds from the southwest. The purpose of the field survey was to document the existing habitat conditions, obtain plant and animal species information, view the surrounding uses, assess the potential for state and federal waters, assess potential for wildlife movement corridors, and if critical habitat is present, assess for the presence of constituent elements.

The entire 84.1-acre project site and 200-meter buffer surrounding the site were surveyed. Linear transects approximately 50 feet apart were walked for 100 percent coverage. All species observed were recorded and Global Positioning System (GPS) way points were taken to delineate specific habitat types, species locations, state or federal waters, or any other information that would be useful for the assessment of the project site. A comprehensive list of all plant and wildlife species that were detected during the field survey within the project site is included in Appendix A. Sensitive plant and wildlife species with the potential to occur within the project area are listed in Appendix B. Representative site photographs were taken and are included within Appendix C.

3.0 Existing Conditions and Results

3.1 Environmental Setting

The approximately 84.1-acre project site consists of a dairy farm and agricultural fields. At the time of the survey, the agricultural fields were being used to grow corn (*Zea* sp.). The entire site has been disturbed by agricultural use and no native habitat was present. The project site also contains two man-made stock/retention ponds. Elevations on the site range from 661 feet above mean sea level (AMSL) to 690 feet AMSL. The project site is adjacent to Euclid Avenue to the west, Merrill Avenue to the south, the unimproved right-of-way of Sultana Avenue to the east, and Eucalyptus Avenue to the north. Surrounding land uses include agricultural uses to the north and east, residential and agricultural uses to the west, and commercial/industrial uses to the south.

3.2 Soils

According to the USDA Web Soil Survey, one soil class occurs on the project site (Appendix D). Soils on the project site are classified as: Chino silt loam (Cb).

3.3 Plant and Habitat Communities

The project site is dominated by four habitat types, including 46.0 acres of agriculture fields, 31.9 acres of disturbed agriculture infrastructure, 5.22 acres of stock/retention ponds, and 1.06 acres of disturbed non-vegetated areas. Following are descriptions of each habitat type.

3.3.1 Agriculture Fields

The project site contains approximately 46.0 acres of agriculture fields. These fields are currently used to grow corn. Small portions are utilized for cattle grazing. The agriculture fields are disturbed and dominated by non-native species of grasses and plants. Species observed include *Avena* sp., *Bromus* sp., and alfalfa (*Medicago sativa*).

3.3.2 Disturbed Agriculture Infrastructure

The project site contains approximately 31.9 acres of disturbed agriculture infrastructure. These areas contain no native habitat and are currently used for containing livestock. These areas are mostly developed with agricultural use structures or residential buildings. The majority of these areas consist of bare ground associated with active livestock pens. Vegetation within these areas consists of non-native ornamental plant species, such as Blue gum eucalyptus (*Eucalyptus globulus*), ash (*Fraxinus* sp.), and Mexican fan palm (*Washingtonia robusta*).

3.3.3 Stock/Retention Ponds

The project site contains approximately 5.22 acres of areas stock/retention ponds. These ponds are man-made and fed by wells. The ponds are dominated by rushes (*Juncus* sp.) and sedges (*Carex* sp.).

3.3.4 Disturbed Non-Vegetated

The project site contains approximately 1.06 acres of dirt roads and pull-outs that are well-maintained and devoid of vegetation.

4.0 Sensitive Biological Resources

4.1 Threatened and Endangered Species

A total of 45 sensitive species of plants and 57 sensitive species of animals have the potential to occur on or within the vicinity of the project area. These include those species listed or candidates

for listing by the USFWS, California Department of Fish and Wildlife (CDFW) and CNPS. All habitats with the potential to be used by sensitive species were evaluated during the site visit and a determination has been made for the presence or probability of presence within this report (Appendix B). This section will address those species listed as Candidate, Rare, Threatened, or Endangered under the state and federal endangered species laws. Other special status species are reported in Appendix B of this report.

4.1.1 Threatened and Endangered Plants

A total of 17 plant species are listed as state and/or federal Threatened, Endangered, or Candidate species; are 1B.1 listed plants on the CNPS Rare Plant Inventory; or have been found to have a potential to exist on the project site, as determined within Appendix B. The site visit was not conducted during the blooming season for the majority of these plant species. No special-status plant species were detected on the site during the reconnaissance surveys and no special-status plant species are expected to occur on the site due to lack of suitable habitat. Longstanding weed abatement/fire break discing and other anthropogenic disturbances have likely altered soil chemistry and other substrate characteristics such that on-site soils may not currently be capable of supporting sensitive plant species. Based on current site conditions and continual anthropogenic disturbances, it was determined that the project site does not provide suitable habitat, and the 17 plant species are presumed absent. Below are descriptions of these species:

Chaparral sand-verbena

Chaparral sand-verbena (*Abronia villosa* var. *aurita*) is ranked 1B.1 in the CNPS rare plant inventory. It is found in sandy areas of chaparral, coastal scrub, and desert dunes habitats. The project site consists of existing agricultural facilities and disturbed areas. No habitat for this species is present on the project site. **This species is not present.**

Braunton's milk-vetch

Braunton's milk-vetch (*Astragalus brauntonii*) is a federally listed endangered species and is ranked 1B.1 in the CNPS rare plant inventory. It is usually found in recently burned or disturbed areas, usually on sandstone with carbonate layers. Its habitat includes chaparral, coastal scrub, valley, and foothill grassland. The project site consists of existing agricultural facilities and disturbed areas. No habitat for this species is present on the project site. **This species is not present.**

Malibu baccharis

Malibu baccharis (*Baccharis malibuensis*) is ranked 1B.1 in the CNPS rare plant inventory. It is found in Conejo volcanic substrates and often on exposed roadcuts. It sometimes occupies oak woodland habitat and grows at elevations of 150 to 320 meters. Its habitat includes chaparral,

cismontane woodland, coastal scrub, and Riparian woodland. The project site consists of existing agricultural facilities and disturbed areas. No habitat for this species is present on the project site. **This species is not present.**

Lucky morning-glory

Lucky morning-glory (*Calystegia felix*) is ranked 1B.1 in the CNPS rare plant inventory. It is often found in disturbed sites near the coast, at marsh edges. It is also found in alkaline soils and sometimes with saltgrass. This species is sometimes found on vernal pool margins. Its habitat includes meadow and seep, and riparian scrub. The project site consists of existing agricultural facilities and disturbed areas. No habitat for this species is present on the project site. **This species is not present.**

Southern tarplant

Southern tarplant (*Centromadia parryi* ssp. *australis*) is ranked 1B.1 in the CNPS rare plant inventory. It is often in disturbed sites near the coast, at marsh edges. It is also grows in alkaline soils, sometimes with saltgrass, and on vernal pool margins. Its habitat includes marsh and swamp, salt marsh, valley and foothill grassland, vernal pool, and wetland. The project site consists of existing agricultural facilities and disturbed areas. No habitat for this species is present on the project site. **This species is not present.**

Smooth tarplant

Smooth tarplant (*Centromadia pungens* ssp. *laevis*) is ranked 1B.1 in the CNPS rare plant inventory. Its habitat includes alkali playa, chenopod scrub, meadows and seeps, riparian woodlands, wetlands, and valley and foothill grasslands. The project site consists of existing agricultural facilities and disturbed areas. No habitat for this species is present on the project site. **This species is not present.**

San Fernando Valley spineflower

San Fernando Valley spineflower (*Chorizanthe parryi* var. *Fernandina*) is a federally proposed threatened species, a state listed endangered species, and is ranked 1B.1 in the CNPS rare plant inventory. It is found in sandy soils. Its habitat includes coastal scrub, and valley and foothill grassland. The project site consists of existing agricultural facilities and disturbed areas. No habitat for this species is present on the project site. **This species is not present.**

Parry's spineflower

Parry's spineflower (*Chorizanthe parryi* var. *parryi*) is ranked 1B.1 in the CNPS rare plant inventory. The species occurs in dry, sandy soils on dry slopes and flats, sometimes at the interface of two vegetations types, such as chaparral and oak woodland. Its habitat includes coastal scrub, chaparral, cismontane woodland, valley and foothill grassland. The project site consists of existing

agricultural facilities and disturbed areas. No habitat for this species is present on the project site. **This species is not present.**

Slender-horned spineflower

Slender - horned spineflower (*Dodecahema leptoceras*) is a federally and state listed endangered species and is ranked 1B.1 in the CNPS rare plant inventory. This species is typically found near flood deposited terraces and washes. Its habitat includes chaparral, cismontane woodland, and coastal scrub (alluvial fan sage scrub). The project site consists of existing agricultural facilities and disturbed areas. No habitat for this species is present on the project site. **This species is not present.**

Santa Ana River woollystar

Santa Ana River woollystar (*Eriastrum densifolium ssp. sanctorum*) is a federally and state listed endangered species and is ranked 1B.1 in the CNPS rare plant inventory. It is typically found in sandy soils on river floodplains or terraced fluvial deposits. Its habitat includes chaparral and coastal scrub. The project site consists of existing agricultural facilities and disturbed areas. No habitat for this species is present on the project site. **This species is not present.**

Tecate cypress

Tecate cypress (*Hesperocyparis forbesii*) is ranked 1B.1 in the CNPS rare plant inventory. It is found on clay or gabbro, primarily on north-facing slopes and in groves often associated with chaparral habitat. Its habitat includes closed-cone coniferous forest, and chaparral. The project site consists of existing agricultural facilities and disturbed areas. No habitat for this species is present on the project site. **This species is not present.**

Mesa horkelia

Mesa horkelia (*Horkelia cuneate var. puberula*) is ranked 1B.1 in the CNPS rare plant inventory. It is typically found in sandy or gravelly sites. Its habitat includes chaparral, cismontane woodland, and coastal scrub. The project site consists of existing agricultural facilities and disturbed areas. No habitat for this species is present on the project site. **This species is not present.**

Jokerst's monardella

Jokerst's monardella (*Monardella australis ssp. jokerstii*) is ranked 1B.1 in the CNPS rare plant inventory. It is found on steep scree or talus slopes between breccia. Its habitat includes chaparral, and lower montane coniferous forest. The project site consists of existing agricultural facilities and disturbed areas. No habitat for this species is present on the project site. **This species is not present.**

Gambel's water cress

Gambel's water cress (*Nasturtium gambelii*) is federally listed endangered species, a state listed threatened species, and is ranked 1B.1 in the CNPS rare plant inventory. It is found in freshwater and brackish marshes at the margins of lakes and along streams, in or just above the water level. Its habitat includes brackish marsh, freshwater marsh, marsh and swamp, and wetland. The project site consists of existing agricultural facilities and disturbed areas. No marshes or swamps are present on the project site. Only man-made stock ponds are present on the project site. **This species is not present.**

Prostrate vernal pool navarretia

Prostrate vernal pool navarretia (*Navarretia prostrata*) is ranked 1B.1 in the CNPS rare plant inventory. It is typically found in alkaline soils in grassland habitat, or in vernal pools. Its habitat includes coastal scrub, valley and foothill grasslands, vernal pools, meadows, and seeps. The project site consists of existing agricultural facilities and disturbed areas. No habitat for this species is present on the project site. **This species is not present.**

Allen's pentachaeta

Allen's pentachaeta (*Pentachaeta aurea ssp. allenii*) is ranked 1B.1 in the CNPS rare plant inventory. It is found on openings in scrub or grassland areas. Its habitat includes coastal scrub, and valley and foothill grassland. The project site consists of existing agricultural facilities and disturbed areas. No habitat for this species is present on the project site. **This species is not present.**

Brand's star phacelia

Brand's star phacelia (*Phacelia stellaris*) is ranked 1B.1 in the CNPS rare plant inventory. Its habitat includes coastal dunes and coastal scrub. The project site consists of existing agricultural facilities and disturbed areas. No habitat for this species is present on the project site. **This species is not present.**

4.1.2 Threatened and Endangered Animals

A total of 27 animal species are listed as state and/or federal Threatened, Endangered, or Candidate will be reviewed in this section, as determined within Appendix B. Sensitive species which have a potential to occur will also be discussed in this section. All sensitive species within the Prado Dam 7.5' USGS topographic quadrangle and eight surrounding quadrangles were reviewed and a complete list of those species are discussed within Appendix B. Below are descriptions of these species:

Cooper's Hawk

The Cooper's hawk (*Accipiter cooperii*) is a CDFW watch list wildlife species. It is found in riparian areas with stands of willow and cottonwoods. It nests in trees and its nesting season is between February 15 and August 15. The project site provides suitable foraging opportunities but does not provide suitable nesting opportunities. **Potential to be present.**

Tricolored blackbird

Tricolored blackbird (*Agelaius tricolor*) is a state listed candidate endangered species and listed by the CDFW as a species of special concern. Its habitat includes freshwater marsh, marsh and swamp, swamp, and wetland. This species is largely endemic to California and is most numerous in and around Central Valley. This species requires open accessible water, protected nesting substrate, and foraging area with insect prey within a few kilometers of the colony. There is potential habitat for this species to be present in the stock ponds. **Potential to be present.**

Grasshopper sparrow

Grasshopper sparrow (*Ammodramus savannarum*) is a CDFW Species of Special Concern. It favors native grasslands with a mix of grasses, forbs, and scattered shrubs. Its habitat includes valley and foothill grassland. There is potential habitat for this species to be present in the agricultural fields. **Potential to be present.**

Arroyo Toad

Arroyo Toad (*Anaxyrus californicus*) is a federally listed endangered species and a CDFW Species of Special Concern. The most favorable breeding habitat for this species consists of slow-moving shallow pools, nearby sandbars, and adjacent stream terraces. Its habitat includes desert wash, riparian scrub, riparian woodland, south coast flowing waters, and south coast standing waters. There is no habitat for this species on the project site. **The species is not present.**

Southern California legless lizard

Southern California legless lizard (*Anniella stebbinsi*) is a CDFW Species of Special Concern. It is found in a variety of habitats, generally around moist, loose soil. This species is generally found south of the Transverse Range, extending to northwestern Baja California, with disjunct populations found in the Tehachapi and Piute Mountains in Kern County. Its habitat includes broadleaved upland forest, chaparral, coastal dunes, and coastal scrub. There is potential habitat for this species to be present in the stock ponds. **Potential to be present.**

Great blue heron

Great blue heron (*Ardea Herodias*) is a CDF Sensitive Species. It is found in rookery sites near foraging areas. It is a colonial nester in tall trees, cliffsides, and sequestered spots on marshes. Its habitat includes brackish marsh, estuary, freshwater marsh, marsh and swamp, riparian forest, and

wetland. There is potential habitat for this species to be present in the stock ponds. **Potential to be present.**

California glossy snake

California glossy snake (*Arizona elegans occidentalis*) is a CDFW Species of Special Concern. This species is found in arid scrub, rocky washes, grassland and chaparral habitats, often with loose or sandy soils. There is potential habitat for this species to be present on the project site. **Potential to be present.**

Burrowing owl

Burrowing owl (*Athene cunicularia*) is a CDFW Species of Special Concern. Its habitat includes coastal prairie, coastal scrub, Great Basin grassland, Great Basin scrub, Mojavean desert scrub, Sonoran desert scrub, and valley and foothill grassland. This species is typically found in open and dry annual or perennial grasslands, deserts, and scrublands characterized by low-growing vegetation. It is a subterranean nester and is dependent upon burrowing mammals, most notably the California ground squirrel. There is potential habitat for this species to be present on the project site. **Potential to be present.**

San Diego fairy shrimp

San Diego fairy shrimp (*Branchinecta sandiegonensis*) is a federally listed endangered species. This species is found in chaparral, coastal scrub, vernal pool, and wetland habitats. The project site consists of a disturbed agriculture area. There is no habitat for this species on the project site. **The species is not present.**

Swainson's hawk

Swainson's hawk (*Buteo swainsoni*) is a state listed threatened species. This species favors open grasslands for foraging but also occurs in agricultural settings. It relies on scattered stands of trees near agricultural fields and grasslands for nesting sites. Its habitats include great basin grassland, riparian forest, riparian woodland, and valley and foothill grassland. This species is not known to nest within the region of the project site. The project site provides suitable foraging opportunities but does not provide suitable nesting opportunities. **Potential to be present.**

Santa Ana sucker

Santa Ana sucker (*Catostomus santaanae*) is a federally listed threatened species. Its habitat includes aquatic and south coast flowing waters. This species prefers sand-rubble-boulder bottoms, cool and clear water, and algae. It is endemic to Los Angeles Basin south coastal streams. The project site does not contain suitable habitat for this species. **This species is not present.**

Western yellow-billed cuckoo

Western yellow-billed cuckoo (*Coccyzus americanus occidentalis*) is a federally listed threatened and state listed endangered species. This species typically nests in riparian jungles of willows, often mixed with cottonwoods, with a lower story of blackberry, nettles, or wild grape. It is found in riparian forest habitat. The project site does not contain suitable habitat for this species. **This species is not present.**

Yellow rail

Yellow rail (*Coturnicops noveboracensis*) is a CDFW Species of Special Concern. This was observed approximately 8.5 miles southeast of the project site in marshland/riparian habitat. This species is widely distributed in the United States and Canada. It nests in shallow freshwater sedge marshes; winters in wet meadows and marshes with cordgrass, saltgrass, sedges, and other low vegetation. There is potential habitat for this species to be present in the stock ponds. **Potential to be present.**

San Bernardino kangaroo rat

San Bernardino kangaroo rat (*Dipodomys merriami parvus*) is a federally listed endangered species and a CDFW Species of Special Concern. It is found in coastal scrub habitat. This species is found in alluvial scrub vegetation on sandy loam substrates, characteristic of alluvial fans and flood plains. It needs early to intermediate seral stages. The project site does not contain suitable habitat for this species. **This species is not present.**

Stephen's kangaroo rat

Stephens' kangaroo rat (*Dipodomys stephensi*) is a federally listed endangered and state listed threatened species. This species is found in coastal sage scrub with sparse vegetation cover, and in valley and foothill grasslands. This species prefers buckwheat, chamise, brome grass, and filaree, and will burrow into firm soil. The project site does not contain suitable habitat for this species. **This species is not present.**

White-tailed kite

The white-tailed kite (*Elanus leucurus*) is a CDFW fully protected species and is found in coastal and valley lowlands. It forages in grasslands, wetlands, and meadows and nests in oak trees, willows, or other tree stands between February and October. The project site provides suitable foraging opportunities but does not provide suitable nesting opportunities. **Potential to be present.**

Southwestern willow flycatcher

Southwestern willow flycatcher (*Empidonax traillii extimus*) is a federally and state listed endangered species. It is found in riparian woodland habitat in southern California. The project site does not contain suitable habitat for this species. **This species is not present.**

Western pond turtle

Western pond turtle (*Emys marmorata*) is a CDFW Species of Special Concern. This species needs basking sites and suitable upland habitat consisting of sandy banks or grassy open fields up to 0.5 kilometers from water for egg-laying. It is a thoroughly aquatic turtle of ponds, marshes, rivers, streams, and irrigation ditches, usually with aquatic vegetation, below 6000 feet elevation. Its habitat includes aquatic, artificial flowing waters, Klamath/North coast flowing waters, Klamath/North coast standing waters, marsh and swamp, Sacramento/San Joaquin flowing waters, Sacramento/San Joaquin standing waters, South coast flowing waters, South coast standing waters, and wetland. There is potential habitat for this species to be present in the stock ponds. **Potential to be present.**

California horned lark

California horned lark (*Eremophila alpestris actia*) is listed on the CDFW Watch List. It is found in coastal regions, chiefly from Sonoma County to San Diego County, as well as in parts of the San Joaquin Valley and east to foothills. This species is found in areas with short-grass prairie, “bald” hills, mountain meadows, open coastal plains, fallow grain fields, and/or alkali flats. Its habitat includes marine intertidal and splash zone communities, and meadow and seep. There is potential habitat for this species to be present on the project site. **Potential to be present.**

Western mastiff bat

Western mastiff bat (*Eumops perotis californicus*) is a CDFW Species of Special Concern. It roosts in crevices in cliff faces, high buildings, trees, and tunnels. It is found in open, semi-arid to arid habitats. Its habitat includes chaparral, cismontane woodland, coastal scrub, and valley and foothill grassland. The project site provides suitable foraging opportunities but does not provide suitable roosting opportunities. **Potential to be present.**

Merlin

Merlin (*Falco columbarius*) is listed on the CDFW Watch List. It is found in areas with clumps of trees or windbreaks for roosting in open county. Its habitat includes estuary, Great Basin grassland, and valley and foothill grassland. The project site provides suitable foraging opportunities but does not provide suitable nesting opportunities. **Potential to be present.**

Bald eagle

Bald eagle (*Haliaeetus leucocephalus*) is a state listed endangered and CDFW fully protected species. This species is found in lower montane coniferous forest and old-growth. They nest in large old-growth or tress with open branches, especially ponderosa pine. The project site does not contain suitable habitat for this species. **This species is not present.**

California black rail

California black rail (*Laterallus jamaicensis coturniculus*) is a state listed threatened species and is a CDFW Fully Protected Species. It inhabits freshwater marshes, wet meadows, and shallow margins of saltwater marshes bordering larger bays. This species needs water depths of about one inch that do not fluctuate throughout the year and dense vegetation for nesting habitat. Its habitat includes brackish marsh, freshwater marsh, marsh and swamp, salt marsh, and wetland. The project site does not have suitable habitat for this species. **This species is not present.**

Coastal California gnatcatcher

Coastal California gnatcatcher (*Polioptila californica californica*) is a federally listed threatened species and CDFW Species of Special Concern. This species is found in coastal bluff scrub and coastal scrub habitat. This species is typically found in low, coastal sage scrub in arid washes, on mesas and slopes. The project site does not have suitable habitat for this species. **This species is not present.**

Delhi Sands flower-loving fly

Delhi Sands flower-loving fly (*Rhaphiomidas terminates abdominalis*) is a federally listed endangered species. It requires fine, sandy soils, often with wholly or partly consolidated dunes and sparse vegetation. It is found only in areas of the Delhi Sands formation in southwestern San Bernardino and northwestern Riverside counties. This species is found in interior dune habitat. The project site does not have suitable habitat for this species. **This species is not present.**

Least Bell's vireo

Least Bell's vireo (*Vireo bellii pusillus*) is a federal and state listed endangered species. This species is found in riparian forest, riparian scrub, and riparian woodland. Nesting habitat of this species is restricted to willow and/or mulefat dominated riparian scrub along permanent or nearly permanent streams. The project site does not contain suitable habitat for this species. **This species is not present.**

American peregrine falcon

American peregrine falcon (*Falco peregrinus anatum*) is a CDFW Fully Protected Species. It is found near wetlands, lakes, rivers, or other water; on cliffs, banks, dunes, mounds; also, human-made structures. It nests in scrapes, depressions, or ledges in open areas. The project site provides

suitable foraging opportunities but does not provide suitable nesting opportunities. **Potential to be present.**

4.1.3 Sensitive Plant Communities

According to the literature search of the *Prado Dam 7.5'* USGS topographic quadrangle and eight surrounding quadrangles, 10 sensitive plant communities have the potential to occur on or within the vicinity of the project site. However, none of the sensitive plant communities identified were found on the project site during the field survey. Therefore, it was determined that no sensitive plant communities occur on the project site.

4.2 Critical Habitats

Critical habitat is defined as areas of land, water, and air space that contain the physical and biological features essential for the survival and recovery of endangered and threatened species. Designated critical habitat includes sites for breeding and rearing, movement or migration, feeding, roosting, cover, and shelter. Critical habitat is designated by USFWS for endangered and threatened species per the federal ESA (16 U.S.C. § 1533 (a)(3)), and to the extent prudent and determinable. Special management of critical habitat, including measures for water quality and quantity, host animals and plants, food availability, pollinators, sunlight, and specific soil types is required to ensure the long-term survival and recovery of the identified species. Critical habitat designation delineates all suitable habitat for the species, whether or not it is occupied. The project site is not located within or adjacent to designated critical habitat for endangered species. Designated critical habitat for least Bell's vireo occurs approximately two miles south of the project site.

4.3 Nesting Birds

Migratory non-game native bird species are protected under the federal Migratory Bird Treaty Act. Additionally, Sections 3503, 3503.5, and 3513 of the California Fish and Game Code prohibit take of all birds and their active nests. The project site contains non-native trees (i.e., Blue gum eucalyptus, ash, and Mexican fan palm) that can support nesting song birds or raptors and can be used by nesting song birds or raptors during the nesting bird season of February 1 to September 15.

4.4 Wildlife Movement Corridors

Wildlife movement corridors can be local or regional in scale; their functions may vary temporally and spatially based on conditions and species present. Wildlife corridors represent areas where wildlife movement is concentrated due to natural or anthropogenic constraints. Local corridors provide access to resources such as food, water, and shelter. Animals use these corridors, which are often hillsides or riparian areas, to move between different habitats. Regional corridors provide these functions and link two or more large habitat areas. They provide avenues for wildlife dispersal, migration, and contact between otherwise distinct populations.

The project site is not located within a designated wildlife corridor or linkage. The project site consists of a dairy farm and agricultural fields. The project site is surrounded by development and/or existing agricultural and livestock land uses. Further, the site is separated from regional wildlife movement corridors associated with the Prado Damn Flood Control Basin and Santa Ana River. Therefore, the project site does not function as a wildlife movement corridor.

4.5 City, County, Regional, State, or Federal Conservation Plans

The project site is not within any state or federal Habitat Conservation Plans or Habitat Conservation Plans. The Ontario Plan is a Policy Plan that serves as the City of Ontario's General Plan.

The project site is located within the boundaries of the City's Ontario Plan. The Ontario Plan's Environmental Resources Element outlines goals and policies related to Water & Wastewater, Solid Waste & Recycling, Energy, Air Quality, and Biological, Agricultural & Mineral Resources. The biological goal is to protect high value habitat. The Ontario Plan, General Policy ER5, includes policies to support the protection of biological resources through habitat conservation areas and to comply with state and federal regulations regarding protected species. According to the Ontario Plan, the project site is mapped as cultivated fields, agricultural industry, and surface water areas, and not in a habitat conservation area. The site is mapped as Prime Farmland and other land. Further, the site is not located within an are mapped as an Area of Potential Occurrence of Sensitive Species.

The City's Municipal Code, Volume II, Chapter 2 contains a provision for "Parkway Tree Regulations" (Ordinance 1664), to preserve parkway trees and to regulate the maintenance and removal of such trees. Parkway is defined as "...that portion of any public street right-of-way between the right-of-way boundary line and the curb line, and also the area enclosed within the curblines of a medial divider." The property owner abutting upon public rights-of-way is responsible to water any tree located in the parkway and for trimming that can be done from the

ground to preserve the neat appearance and non-obstructed use of the parkway, while the City is responsible for all major pruning. Removal or relocation of any parkway tree requires prior authorization from the Public Works Agency of the City through a permit process, and planting of a replacement tree, whenever feasible, shall be a condition included in any permit issued by the City for the removal of any parkway tree. Alternatively, a cash-in-lieu deposit may be accepted by the City as an alternate to the actual planting of any required parkway tree based on a fair value established by the Public Facilities Manager.

4.6 State and Federal Jurisdictional Drainages

The project site contains approximately 5.22 acres of stock/retention ponds. These ponds are man-made, for agricultural use, and fed by wells. The man-made ponds are not connected to a natural stream, nor do they divert natural flow from any river, stream or lake.

Since the source of the water for these man-made features are not part of a natural stream, river, or lake, the stock ponds are not considered jurisdictional under the California Department of Fish and Wildlife (CDFW) Lake and Streambed Alteration Program. The program states: “An entity shall not substantially divert or obstruct the natural flow of, or substantially change or use any material from the bed, channel, or bank of, any river, stream, or lake, or deposit or dispose of debris, waste, or other material containing crumbled, flaked, or ground pavement where it may pass into any river, stream, or lake...”. Therefore, the stock ponds on the project site are not a “natural flow” of a stream, river, or lake, and would not be considered jurisdictional by CDFW.

Further, the man-made stock ponds are not adjacent to and are not considered Waters of the United States (WUS). which receives no hydrologic flow. The stock ponds are isolated features that are not tributary to nor do they have a significant nexus (biological, chemical, or physical connection) to traditional navigable waters of the United States. Therefore, the man-made ponds on the project site would not be considered federally jurisdictional under the Clean Water Act.

5.0 Project Impacts

5.1 Impacts to Existing Habitats

Implementation of the proposed project will impact the entire 84.1-acre project site, including 46.0 acres of agriculture fields, 31.9 acres of disturbed agriculture infrastructure, 5.22 acres of stock/retention ponds, and 1.06 acres of disturbed non-vegetated areas.

5.2 Impacts to Sensitive Species

5.2.1 Plant Species

As identified in Section 4.1.1 (above), no special-status plant species were detected on the site during the reconnaissance surveys and no special-status plant species are expected to occur on the site due to lack of suitable habitat. Longstanding weed abatement/fire break discing and other anthropogenic disturbances have likely altered soil chemistry and other substrate characteristics such that on-site soils may not currently be capable of supporting sensitive plant species. Therefore, the development of the Project would not result in a substantial adverse effect, either directly or through habitat modification, on any plant species identified as a candidate, sensitive or special status species in local or regional plans, policies, or regulation or by the CDFW or USFWS. Hence, no significant impact to special-status plant species or their habitat would occur.

5.2.2 Animals

As identified in Section 4.1.2 (above), the species discussed below have been determined to have the potential to occur on site. Project activities were evaluated to determine the potential for impacts to these species.

Cooper's Hawk

The Cooper's hawk is a CDFW watch list wildlife species. The project site provides suitable foraging opportunities but does not provide suitable nesting opportunities. The proposed project has the potential to result in impacts to this species. Implementation of the measures identified in the Recommendations section of this report will ensure that potential impacts to this species are less than significant.

Tricolored blackbird

Tricolored blackbird is a state listed candidate endangered species and listed by the CDFW as a species of special concern. There is potential habitat for this species to be present in the stock ponds. The proposed project has the potential to result in impacts to this species. Implementation of the measures identified in the Recommendations section of this report will ensure that potential impacts to this species are less than significant.

Grasshopper sparrow

Grasshopper sparrow is a CDFW Species of Special Concern. There is potential habitat for this species to be present in the agricultural fields. The proposed project has the potential to result in impacts to this species. Implementation of the measures identified in the Recommendations section of this report will ensure that potential impacts to this species are less than significant.

California legless lizard

Southern California legless lizard is a CDFW Species of Special Concern. There is potential habitat for this species to be present in the stock ponds. The proposed project has the potential to result in impacts to this species. Implementation of the measures identified in the Recommendations section of this report will ensure that potential impacts to this species are less than significant.

Great blue heron

Great blue heron is a CDF Sensitive Species. There is potential habitat for this species to be present in the stock ponds. The proposed project has the potential to result in impacts to this species. Implementation of the measures identified in the Recommendations section of this report will ensure that potential impacts to this species are less than significant.

California glossy snake

California glossy snake is a CDFW Species of Special Concern. There is potential habitat for this species to be present on the project site. The proposed project has the potential to result in impacts to this species. Implementation of the measures identified in the Recommendations section of this report will ensure that potential impacts to this species are less than significant.

Burrowing owl

Burrowing owl is a CDFW Species of Special Concern. There is potential habitat for this species to be present on the project site. The proposed project has the potential to result in impacts to this species. Protocol burrowing owl surveys are recommended to determine the presence and use of the site by burrowing owls.

Swainson's hawk

Swainson's hawk is a state listed threatened species. The project site provides suitable foraging opportunities but does not provide suitable nesting opportunities. The proposed project has the potential to result in impacts to this species. Implementation of the measures identified in the Recommendations section of this report will ensure that potential impacts to this species are less than significant.

White-tailed kite

The white-tailed kite is a CDFW fully protected species. The project site provides suitable foraging opportunities but does not provide suitable nesting opportunities. The proposed project has the potential to result in impacts to this species. Implementation of the measures identified in the Recommendations section of this report will ensure that potential impacts to this species are less than significant.

Yellow rail

Yellow rail is a CDFW Species of Special Concern. There is potential habitat for this species to be present in the stock ponds. The proposed project has the potential to result in impacts to this species. Implementation of the measures identified in the Recommendations section of this report will ensure that potential impacts to this species are less than significant.

Western pond turtle

Western pond turtle is a CDFW Species of Special Concern. There is potential habitat for this species to be present in the stock ponds. The proposed project has the potential to result in impacts to this species. Implementation of the measures identified in the Recommendations section of this report will ensure that potential impacts to this species are less than significant.

California horned lark

California horned lark is listed on the CDFW Watch List. There is potential habitat for this species to be present on the project site. The proposed project has the potential to result in impacts to this species. Implementation of the measures identified in the Recommendations section of this report will ensure that potential impacts to this species are less than significant.

Western mastiff bat

Western mastiff bat is a CDFW Species of Special Concern. The project site provides suitable foraging opportunities but does not provide suitable roosting opportunities. Removal of the onsite agricultural fields may result in the loss of potential foraging habitat for this species. Therefore, the proposed project has the potential to result in impacts to this species. Implementation of the measures identified in the Recommendations section of this report will ensure that potential impacts to this species are less than significant.

Merlin

Merlin is listed on the CDFW Watch List. The project site provides suitable foraging opportunities but does not provide suitable nesting opportunities. The proposed project has the potential to result in impacts to this species. Implementation of the measures identified in the Recommendations section of this report will ensure that potential impacts to this species are less than significant.

American peregrine falcon

American peregrine falcon is a CDFW Fully Protected Species. The project site provides suitable foraging opportunities but does not provide suitable nesting opportunities. Removal of onsite vegetation and agricultural fields may result in the loss of potential foraging habitat for this species. Therefore, the proposed project has the potential to result in impacts to this species. Implementation of the measures identified in the Recommendations section of this report will ensure that potential impacts to this species are less than significant.

5.3 Impacts to Nesting Birds

Potential impacts to nesting birds may occur if ground disturbing activities or vegetation removal occur during the bird nesting season of February 1 through September 15. Implementation of the measures identified in the Recommendations section of this report will ensure that potential impacts to nesting birds are less than significant.

5.4 Impacts to Critical Habitat

The project is not located within designated federal critical habitat. No impact to critical habitat is expected.

5.5 Impacts to Wildlife Movement Corridors

The project site does not contain any wildlife movement corridors. No impacts are expected.

5.6 Conflict with Local Policies or Ordinances Protecting Biological Resources

The Ontario Plan General Policy ER5 supports the protection of high value habitat areas by establishing habitat conservation areas and complying with state and federal regulations regarding protected species. According to the Ontario Plan, the project site is mapped as cultivated fields, agricultural industry, and surface water areas. The site is mapped as Prime Farmland and other land. Further, the site is not located within an area mapped as an Area of Potential Occurrence of Sensitive Species. Therefore, since the project site does not support high quality habitats or protected species, the project will not conflict with these policies.

The City's Municipal Code has a provision to protect parkway trees within public rights-of-way and requires a permit to remove or relocate any trees, and planting of replacement trees or a cash-in-lieu fee compensation for any tree removed. Should the project result in the removal of trees that are considered parkway trees, a permit will be required.

5.7 Conflict with the Provisions of an Adopted Habitat Conservation Plan, Natural Community Conservation Plan, or Other Approved Local, Regional, or State Habitat Conservation plan

No impacts to any adopted Habitat Conservation Plan, Natural Community Conservation Plan, or Other Approved Local, Regional, or State Habitat Conservation plan are anticipated.

5.7 Cumulative Impacts

According to CEQA Guidelines Section 15130, cumulative impacts refer to the incremental effects of an individual project when viewed in connection with the effects of past, current, and probable future projects. Implementation of the proposed project would not result in the removal of native vegetation, as no native vegetation communities are present within the project area; therefore, the project would not contribute to cumulative impacts to native vegetation.

Because development of the project site will not impact native plant communities, it is highly unlikely that implementation of the proposed project would contribute considerably to cumulative adverse impacts to sensitive plant or wildlife species. Although the project site contains potentially suitable habitat for burrowing owl, southern California legless lizard, California glossy snake, and western pond turtle, implementation of mitigation measures identified in the Recommendations section of this report are anticipated to reduce potential impacts to these species to a less than significant level, thereby reducing cumulative impacts to a less than significant level.

There is potential for bats to forage within the agricultural fields present on the project site. The proposed project would directly remove potential foraging habitat. If the population of bats potentially impacted is 25 or more individuals of non-special-status species or one individual of special-status species, the project has the potential to result in significant impacts. With implementation of the mitigation measures identified in the Recommendations section of this report, potential impacts to these species are anticipated to be reduced to a less than significant level, thereby reducing cumulative impacts to these species to a less than significant level.

The project site area provides potential nesting and/or foraging habitat for Cooper's hawk, Tricolored blackbird, Grasshopper sparrow, Great blue heron, Swainson's hawk, White-tailed kite, Yellow rail, California horned lark, Merlin, and American peregrine falcon. In addition, other species of raptors may also use the site for foraging and nesting. Further, the project site contains trees and shrubs that can support nesting song birds or raptors and can be used by nesting song birds or raptors protected under the federal Migratory Bird Treaty Act and Sections 3503, 3503.5, and 3513 of the California Fish and Game Code during the nesting bird season of February 1 to September 15. These species are common to the region and the removal of nesting habitat for these or other common species of raptors would not make a potentially cumulatively considerable contribution to the regional decline of raptors. The proposed project would remove approximately 46.0 acres of agriculture fields and 5.22 acres of stock/retention ponds. Although the agriculture fields and stock/retention ponds may provide foraging and/or nesting habitat for special status bird species, it is not expected to be valuable, as the lands are actively maintained and in use. This loss of potential nesting and foraging habitat would not make a cumulatively considerable contribution to the regional decline of raptors.

6.0 Recommendations

Implementation of the following mitigation measures will ensure that potential impacts to this species are less than significant.

6.1 Sensitive Species

Cooper's hawk, Tricolored blackbird, Grasshopper sparrow, Great blue heron, Swainson's hawk, White-tailed kite, Yellow rail, California horned lark, Merlin, American peregrine falcon

- It is recommended that vegetation removal be conducted outside of the nesting season for migratory birds to avoid direct impacts.
- If vegetation removal will occur during the migratory bird nesting season, between February 1 and September 15, pre-construction nesting bird surveys shall be performed within three days prior to vegetation removal.
- If active nests are found during nesting bird surveys, they shall be flagged. A 250-foot buffer shall be fenced around song bird nests and a 500-foot buffer shall be fenced around raptor nests.

Southern California legless lizard and California glossy snake

- Three days prior to any ground disturbing activities or vegetation removal, a qualified biological monitor should conduct a preconstruction survey to identify any sensitive biological resources. Any reptile or amphibian species that may be present within the project area shall be relocated outside of the impact areas. Should sensitive species of reptiles or amphibians be identified onsite during the preconstruction survey, a relocation plan shall be submitted to the City and CDFW for approval prior to any ground disturbing activities.
- The relocation plan shall include, but not be limited to, the timing and location of the surveys that shall be conducted for each species; identify the locations where more intensive efforts shall be conducted; identify the habitat and conditions in the proposed relocation site(s); the methods that shall be utilized for trapping and relocating the individual species; and provide for the documentation/recordation of the species and number of the animals relocated.

- Biological monitors shall be present during ground-disturbing activities immediately adjacent to or within habitat with the potential to support sensitive species of reptiles or amphibians.

Burrowing owl

- A protocol burrowing owl survey is recommended to determine the presence and use of the site by burrowing owls.

Western mastiff bat

- Prior to implementation of project activities, a qualified biologist shall be retained to determine whether potential roosting sites for bats may be affected. For large ornamental trees suitable for bat roosting/nursery, exit counts and acoustic surveys shall be performed prior to initial ground disturbance and vegetation removal to determine whether the project footprint and a 300-foot buffer supports a nursery or roost, and by which species. This survey work will occur between late-spring and late summer and/or in the fall (generally mid-March through late October).
- If the results of the bat survey find a total of a single roosting individual of a special-status bat species or 25 or more individuals of non-special-status bat species with potential to be present in the project impact area, a Bat Management Plan shall be developed to ensure mortality to bats does not occur. For each location confirmed to be occupied by bats, the plan will provide details both in text and graphically where exclusion devices/and or staged tree removal will need to occur, the timing for exclusion work, and the timeline and methodology needed to exclude the bats. The plan will need to be reviewed and approved by CDFW prior to disturbance of the roost(s).

Western pond turtle

- Within 14 days prior to the onset of construction activities, a qualified biologist shall conduct pre-construction surveys for Western pond turtle within all areas that fall within 100 feet of any suitable aquatic and upland nesting habitat for this species (stock/retention ponds). If Western pond turtles are observed during the pre-construction survey, the California Department of Fish and Wildlife shall be contacted. If no Western pond turtles are observed during the preconstruction survey, then construction activities may begin. If construction is delayed or halted for more than 30 days, another pre-construction survey for Western pond turtle shall be conducted. Within seven days of the pre-construction

survey, a report of findings from the survey shall be submitted to the California Department of Fish and Wildlife.

- During construction, a qualified biological monitor who has been approved by the California Department of Fish and Wildlife to relocate Western pond turtles shall be onsite to ensure that no Western pond turtles are harmed. If Western pond turtles are observed in the construction area at any time during construction, the onsite biological monitor shall be notified and construction in the vicinity of the sighting shall be halted until such a time as a turtle has been removed from the construction zone and relocated by an approved biologist. If a siting occurs during construction, the biologist shall prepare a report of the event and submit it to California Department of Fish and Wildlife.

7.0 Certification

I hereby certify that the statements furnished above and in the attached exhibits present the data and information required for this biological evaluation, and that the facts, statements, and information presented are true and correct to the best of my knowledge and belief.

Date 12-19-19

Signed



PROJECT MANAGER

Fieldwork Performed By:

Juan Jose Hernandez

PRINCIPAL BIOLOGIST

8.0 References

American Ornithologists' Union. 1983 (and supplements 1985, 1987, 1989, 1991, 1993, and 1995). *The A.O.U. Check-List of North American Birds*. 6th ed. Allen Press. Lawrence, Kansas.

Burt, W. H., 1986. *A Field Guide to the Mammals in North America North of Mexico*. Houghton Mifflin Company, Boston, Massachusetts.

CDFG (California Department of Fish and Game). 1988a. *California's Wildlife, Volume I: Amphibians and Reptiles*. State of California Resources Agency. Sacramento, California.

CDFG (California Department of Fish and Game). 1988b. *California's Wildlife, Volume II: Birds*. State of California's Resource Agency. Sacramento, California.

CDFG (California Department of Fish and Game). 1988c. *California's Wildlife, Volume III: Mammals*. State of California Resources Agency. Sacramento, California.

CDFG (California Department of Fish and Game). 2014 (October). *Natural Communities List*. The Resources Agency of California, Department of Fish and Game, Natural Diversity Data Base. Sacramento, California.

CDFG (California Department of Fish and Game). 2014 (October). *Endangered and Threatened Animals List*. The Resources Agency of California, Department of Fish and Game, Natural Diversity Data Base. Sacramento, California.

CDFG (California Department of Fish and Game). 2014 (October). *Endangered Threatened and Rare Plants*. The Resources Agency of California, Department of Fish and Game, Natural Diversity Data Base. Sacramento, California.

CDFG (California Department of Fish and Game). 2014 (October). *Special Animals List*. The Resources Agency of California, Department of Fish and Game, Natural Diversity Data Base. Sacramento, California.

CDFW (California Department of Fish and Wildlife), Natural Diversity Database (CNDDDB). Accessed August 2018. California Department of Fish and Wildlife, Sacramento, California.

California Native Plant Society, *California Native Plant Status Report*, 1985a. *Centrostegia leptoceras*.

California Native Plant Society, California Native Plant Status Report, 1985b. *Eriastrum densifolium* var. *sanctorum*.

Garrett, K. and J. Dunn, 1981. *Birds of Southern California*. Los Angeles Audubon Society. The Artisan Press, Los Angeles, California.

Grenfell, W. E., M. D. Parisi, and D. McGriff, 2003. A Check-list of the Amphibians, Reptiles, Birds and Mammals of California. California Wildlife Habitat Relationship System, California Department of Fish and Game, Sacramento, California.

Grinnell, J., 1933. Review of the Recent Mammal Fauna of California. *University of California Publications in Zoology*, 40:71-234.

Hall, E. R., 1981. *The Mammals of North America*, Volumes I and II. John Wiley and Sons, New York, New York.

Hickman, J. C., ed. 1993. *The Jepson Manual: Higher Plants of California*. University of California Press.

Holland, R.F. 1986 (updated 1996). Preliminary Descriptions of the Terrestrial Natural Communities of California. Non-game Heritage Program. California Department of Fish and Game. Sacramento, California.

Ingles, L. G., 1965. *Mammals of the Pacific States*. Stanford University Press, Stanford, California.

Jameson, jr., E. W. and H. J. Peters. *California Mammals*. University of California Press, Berkeley, Los Angeles, London. 403 pp.

Lackey, J. 1996. *Chaetodipus fallax*. Mammalian Species No. 517. American Society of Mammalogists.

List of Vegetation Alliances and Associations. Vegetation Classification and Mapping Program, California Department of Fish and Game. Sacramento, CA. September 2010.

Munz, P.A., 1974. *A Flora of Southern California*. University of California Press, Berkeley, California.

Peterson, R. 1990 *A Field Guide to Western Birds*. Houghton Mifflin Company, Boston, MA.

Sawyer, J.O. and T. Keeler-Wolf. 1995. *A Manual of California Vegetation*. California Native Plant Society. Sacramento, California.

Spencer, W.D., P. Beier, K. Penrod, K. Winters, C. Paulman, H. Rustigian-Romsos, J. Strittholt, M. Parisi, and A. Pettler. 2010. *California Essential Habitat Connectivity Project: A Strategy for Conserving a Connected California*. Prepared for California Department of Transportation, California Department of Fish and Game, and Federal Highways Administration.

Stebbins, R.C. 2003. *A Field Guide to Western Reptiles and Amphibians*. 2nd ed. Houghton Mifflin Company. Boston, Massachusetts.

Tibor, D.P. 2001. California Native Plant Society's Inventory of Rare and Endangered Plants of California. California Native Plant Society. Special Publication, No. 1, 6th ed.

Udvardy, M.D. 1994. *National Audubon Society Field Guide to North American Birds*. Alfred A. Knopf, Inc. New York, New York.

U.S Fish and Wildlife Service, 2014. Endangered and Threatened Wildlife and Plants. <https://www.fws.gov/endangered/species/us-species.html>; Accessed August 2018.

USGS (United States Geological Survey). *Prado Dam 7.5'* Topographic Quadrangle. 1973, revised 2018.

Web Soil Survey. Available online at <http://websoilsurvey.nrcs.usda.gov/>. Accessed August 2018.

Wheeler, J., 1988. Recent Ecological Investigations and Present Status of the Endangered Santa Ana River Woolly-Star, *Eriastrum densifolium* spp. sanctorum (Milliken) Mason. *Crossosoma*, Vol 14, No. 3. pp. 1-17.

Williams, D. F., 1986. Mammalian Species of Special Concern in California. Wildlife Management Division Administrative Report 86-1. Prepared for The Resources Agency, California Department of Fish and Game.

Zeiner, D. C., W. F. Laudenslayer, Jr., K. E. Mayer and M. White, 1990. California's Wildlife, Volume III Mammals, The Resources Agency, Department of Fish and Game, Sacramento, California.

Zemba, R. and K.J. Kramer, 1984. The known distribution and unknown future of Santa Ana River woolly-star (*Eriastrum*). *Crossosoma*, Vol. 10, No. 5.

FIGURES

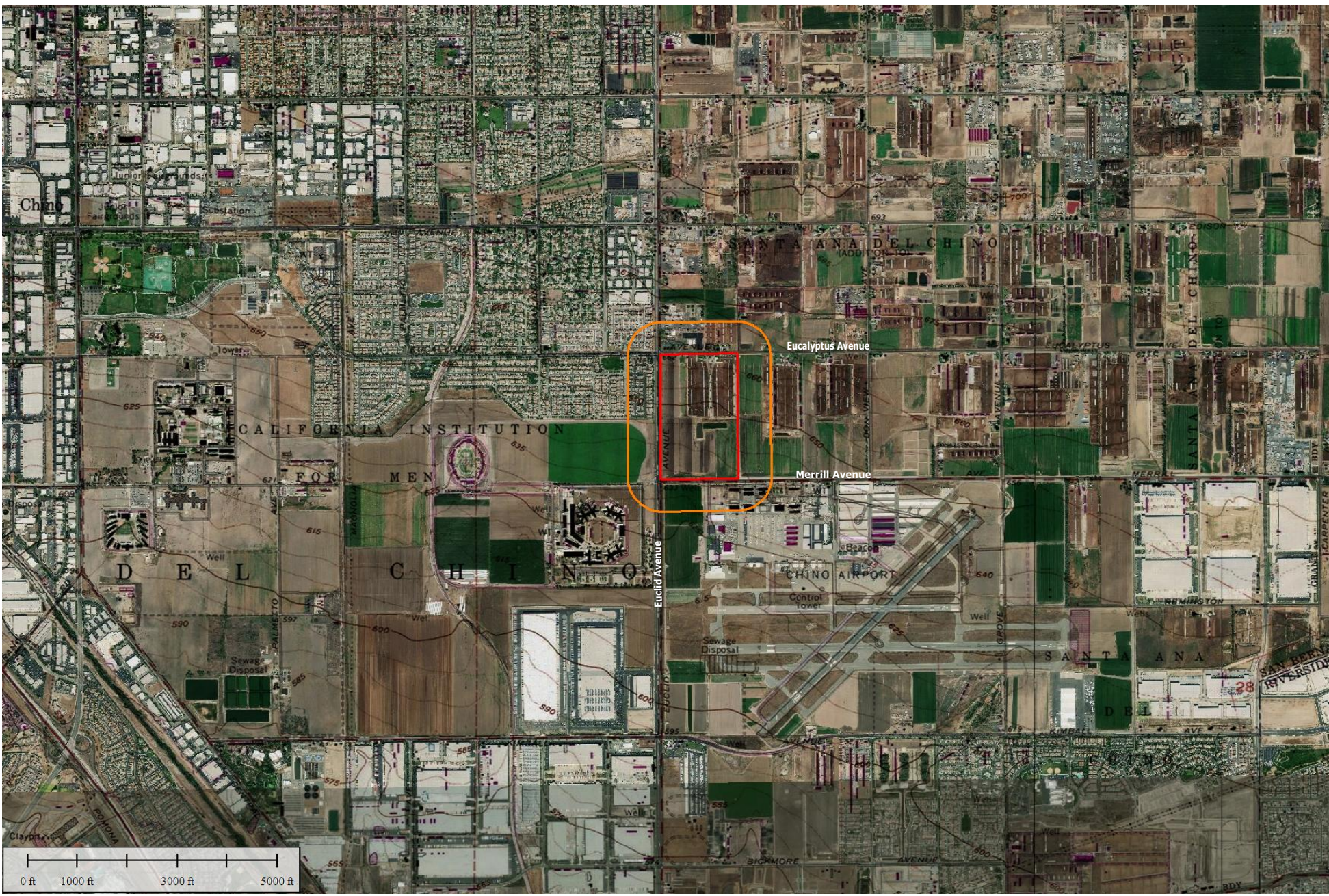


Figure 1
Location Map
West Ontario Commerce Center
City of Ontario
San Bernardino County, California

Project Site Boundary

200-Meter Buffer Area



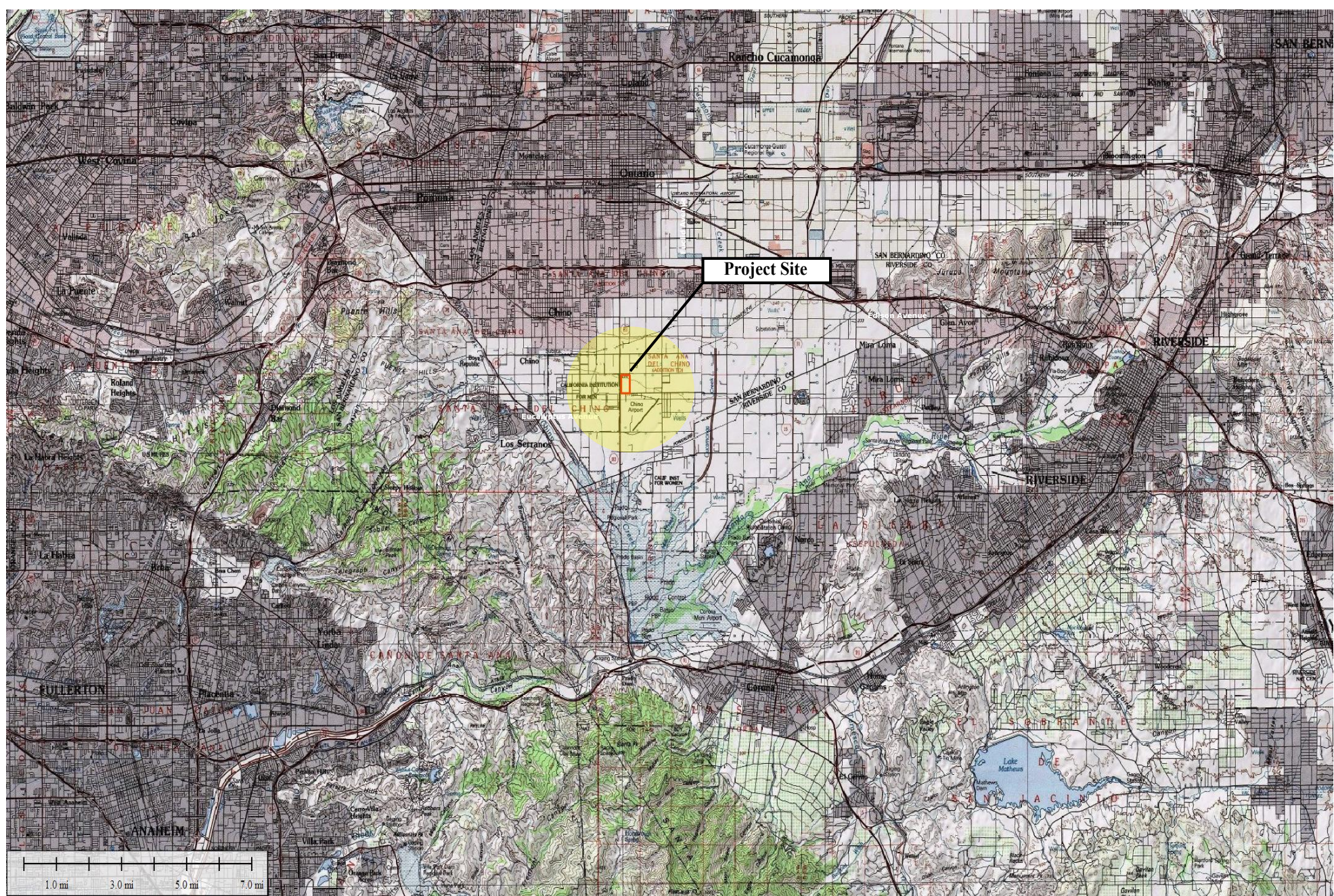



Figure 2
 Vicinity Map
 West Ontario Commerce Center
 City of Ontario
 San Bernardino County, California



Legend

Project Site Boundary




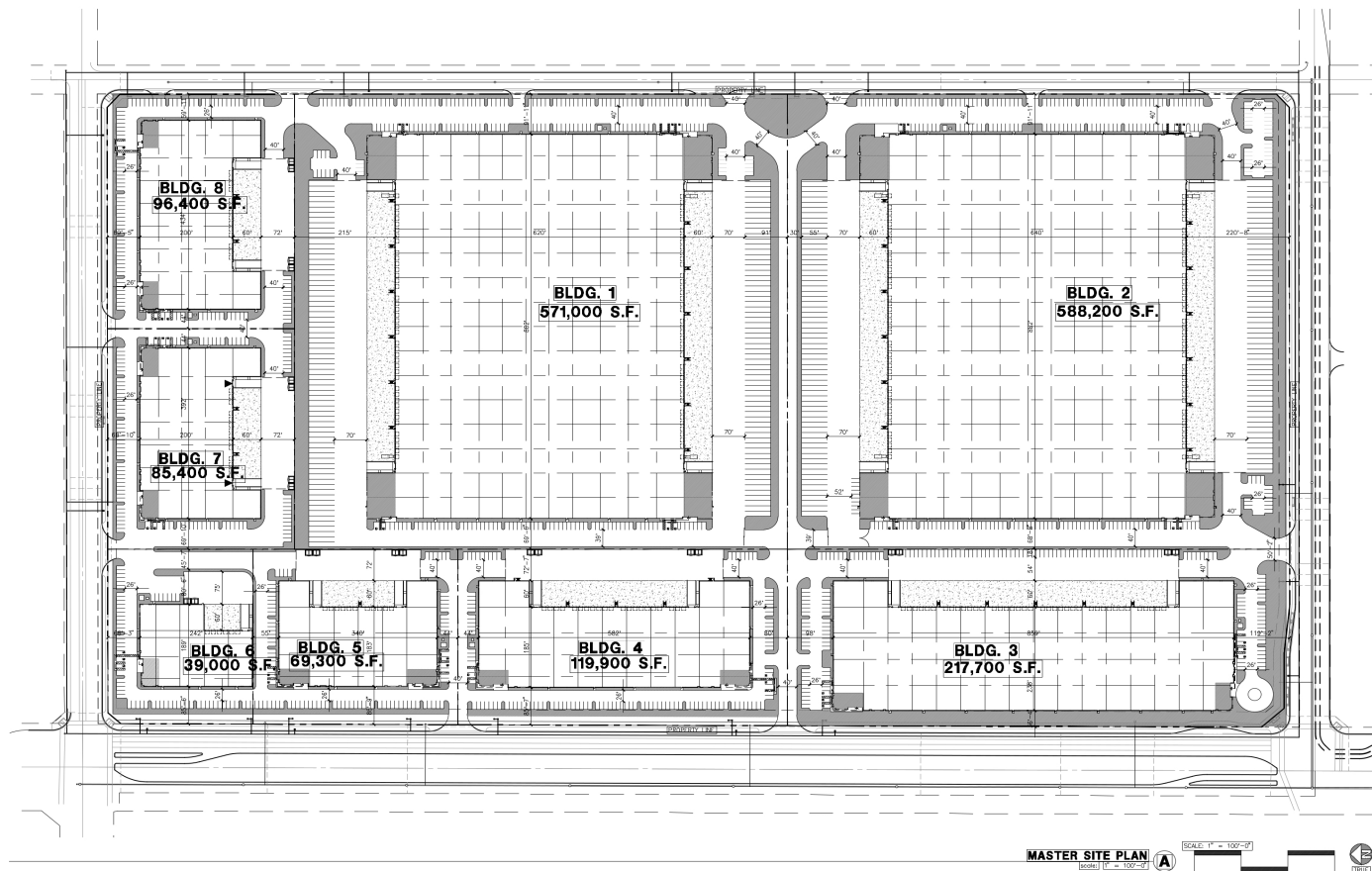


Figure 3
 Site Plans
 West Ontario Commerce Center
 City of Ontario
 San Bernardino County, California



MASTER SITE PLAN
 1/2" = 100'-0"



PROJECT DATA

	BLDG. 1	BLDG. 2	BLDG. 3	BLDG. 4	BLDG. 5	BLDG. 6	BLDG. 7	BLDG. 8	TOTAL
SITE AREA									
in s.f.	1,102,365	1,122,569	433,123	284,866	176,317	124,273	202,801	215,547	3,661,861 s.f.
in acres	25.3	25.8	9.9	6.5	4.0	2.9	4.7	4.9	84.1 ac
BUILDING AREA									
Office	20,000	20,000	10,000	5,000	5,000	5,000	5,000	5,000	75,000 s.f.
warehouse	551,000	568,200	207,700	114,900	64,300	34,100	80,400	91,400	1,712,000 s.f.
TOTAL	571,000	588,200	217,700	119,900	69,300	39,100	85,400	96,400	1,787,000 s.f.
COVERAGE									
	51.8%	52.4%	50.3%	42.1%	39.3%	31.5%	42.1%	44.7%	48.8%
BUILDING INT. CLEAR HEIGHT	40'-0"	40'-0"	36'-0"	32'-0"	32'-0"	30'-0"	32'-0"	32'-0"	
AUTO PARKING REQUIRED									
Office: 1/250 s.f.	80	80	40	20	20	20	20	20	300 stalls
Whse: 1st 20K @ 1/1,000 s.f.	20	20	20	20	20	20	20	20	160 stalls
over 20K @ 1/2,000 s.f.	266	275	94	48	23	8	31	36	781 stalls
TOTAL	366	375	154	88	63	48	71	76	1,241 stalls
PARKING PROVIDED									
Standard (9' x 18')	242	256	177	119	92	64	106	103	1,159 stalls
Trailer (12' x 55')	134	119							253 stalls
TOTAL	376	375	177	119	92	64	106	103	1,411 stalls
LANDSCAPE PROVIDED									
in s.f.	110,471	117,288	57,992	31,482	20,500	18,520	18,488	23,156	397,897 s.f.
Percentage -	10.0%	10.4%	13.4%	11.1%	11.6%	14.9%	9.1%	10.7%	10.9%

PROPERTY OWNER

ADDRESS OF THE PROPERTY

(EUCALYPTUS AVE AND EUCLID AVE)

ASSESSOR'S PARCEL NUMBER

1054-011-01
 1054-011-02
 1054-011-03
 1054-011-04
 1054-011-05
 1054-011-06
 1054-011-07
 1054-011-08
 1054-011-09
 1054-011-10
 1054-011-11
 1054-011-12
 1054-011-13
 1054-011-14
 1054-011-15
 1054-011-16
 1054-011-17
 1054-011-18
 1054-011-19
 1054-011-20
 1054-011-21
 1054-011-22
 1054-011-23
 1054-011-24
 1054-011-25
 1054-011-26
 1054-011-27
 1054-011-28
 1054-011-29
 1054-011-30
 1054-011-31
 1054-011-32
 1054-011-33
 1054-011-34
 1054-011-35
 1054-011-36
 1054-011-37
 1054-011-38
 1054-011-39
 1054-011-40
 1054-011-41
 1054-011-42
 1054-011-43
 1054-011-44
 1054-011-45
 1054-011-46
 1054-011-47
 1054-011-48
 1054-011-49
 1054-011-50
 1054-011-51
 1054-011-52
 1054-011-53
 1054-011-54
 1054-011-55
 1054-011-56
 1054-011-57
 1054-011-58
 1054-011-59
 1054-011-60
 1054-011-61
 1054-011-62
 1054-011-63
 1054-011-64
 1054-011-65
 1054-011-66
 1054-011-67
 1054-011-68
 1054-011-69
 1054-011-70
 1054-011-71
 1054-011-72
 1054-011-73
 1054-011-74
 1054-011-75
 1054-011-76
 1054-011-77
 1054-011-78
 1054-011-79
 1054-011-80
 1054-011-81
 1054-011-82
 1054-011-83
 1054-011-84
 1054-011-85
 1054-011-86
 1054-011-87
 1054-011-88
 1054-011-89
 1054-011-90
 1054-011-91
 1054-011-92
 1054-011-93
 1054-011-94
 1054-011-95
 1054-011-96
 1054-011-97
 1054-011-98
 1054-011-99
 1054-011-100

ZONING

(P- INDUSTRIAL, PWD)

LEGAL DESCRIPTION

THE LAND REFERRED TO HEREIN BELOW IS SITUATED IN THE CITY OF ONTARIO, IN THE COUNTY OF SAN BERNARDINO, STATE OF CALIFORNIA, AND IS DESCRIBED AS FOLLOWS:
 LOTS 1, 2, 3, 4, 5, 6, 7, 8, 9, 10, 11, 12, 13, 14, 15, 16, 17, 18, 19, 20, 21, 22, 23, 24, 25, 26, 27, 28, 29, 30, 31, 32, 33, 34, 35, 36, 37, 38, 39, 40, 41, 42, 43, 44, 45, 46, 47, 48, 49, 50, 51, 52, 53, 54, 55, 56, 57, 58, 59, 60, 61, 62, 63, 64, 65, 66, 67, 68, 69, 70, 71, 72, 73, 74, 75, 76, 77, 78, 79, 80, 81, 82, 83, 84, 85, 86, 87, 88, 89, 90, 91, 92, 93, 94, 95, 96, 97, 98, 99, 100, 101, 102, 103, 104, 105, 106, 107, 108, 109, 110, 111, 112, 113, 114, 115, 116, 117, 118, 119, 120, 121, 122, 123, 124, 125, 126, 127, 128, 129, 130, 131, 132, 133, 134, 135, 136, 137, 138, 139, 140, 141, 142, 143, 144, 145, 146, 147, 148, 149, 150, 151, 152, 153, 154, 155, 156, 157, 158, 159, 160, 161, 162, 163, 164, 165, 166, 167, 168, 169, 170, 171, 172, 173, 174, 175, 176, 177, 178, 179, 180, 181, 182, 183, 184, 185, 186, 187, 188, 189, 190, 191, 192, 193, 194, 195, 196, 197, 198, 199, 200, 201, 202, 203, 204, 205, 206, 207, 208, 209, 210, 211, 212, 213, 214, 215, 216, 217, 218, 219, 220, 221, 222, 223, 224, 225, 226, 227, 228, 229, 230, 231, 232, 233, 234, 235, 236, 237, 238, 239, 240, 241, 242, 243, 244, 245, 246, 247, 248, 249, 250, 251, 252, 253, 254, 255, 256, 257, 258, 259, 260, 261, 262, 263, 264, 265, 266, 267, 268, 269, 270, 271, 272, 273, 274, 275, 276, 277, 278, 279, 280, 281, 282, 283, 284, 285, 286, 287, 288, 289, 290, 291, 292, 293, 294, 295, 296, 297, 298, 299, 300, 301, 302, 303, 304, 305, 306, 307, 308, 309, 310, 311, 312, 313, 314, 315, 316, 317, 318, 319, 320, 321, 322, 323, 324, 325, 326, 327, 328, 329, 330, 331, 332, 333, 334, 335, 336, 337, 338, 339, 340, 341, 342, 343, 344, 345, 346, 347, 348, 349, 350, 351, 352, 353, 354, 355, 356, 357, 358, 359, 360, 361, 362, 363, 364, 365, 366, 367, 368, 369, 370, 371, 372, 373, 374, 375, 376, 377, 378, 379, 380, 381, 382, 383, 384, 385, 386, 387, 388, 389, 390, 391, 392, 393, 394, 395, 396, 397, 398, 399, 400, 401, 402, 403, 404, 405, 406, 407, 408, 409, 410, 411, 412, 413, 414, 415, 416, 417, 418, 419, 420, 421, 422, 423, 424, 425, 426, 427, 428, 429, 430, 431, 432, 433, 434, 435, 436, 437, 438, 439, 440, 441, 442, 443, 444, 445, 446, 447, 448, 449, 450, 451, 452, 453, 454, 455, 456, 457, 458, 459, 460, 461, 462, 463, 464, 465, 466, 467, 468, 469, 470, 471, 472, 473, 474, 475, 476, 477, 478, 479, 480, 481, 482, 483, 484, 485, 486, 487, 488, 489, 490, 491, 492, 493, 494, 495, 496, 497, 498, 499, 500, 501, 502, 503, 504, 505, 506, 507, 508, 509, 510, 511, 512, 513, 514, 515, 516, 517, 518, 519, 520, 521, 522, 523, 524, 525, 526, 527, 528, 529, 530, 531, 532, 533, 534, 535, 536, 537, 538, 539, 540, 541, 542, 543, 544, 545, 546, 547, 548, 549, 550, 551, 552, 553, 554, 555, 556, 557, 558, 559, 560, 561, 562, 563, 564, 565, 566, 567, 568, 569, 570, 571, 572, 573, 574, 575, 576, 577, 578, 579, 580, 581, 582, 583, 584, 585, 586, 587, 588, 589, 590, 591, 592, 593, 594, 595, 596, 597, 598, 599, 600, 601, 602, 603, 604, 605, 606, 607, 608, 609, 610, 611, 612, 613, 614, 615, 616, 617, 618, 619, 620, 621, 622, 623, 624, 625, 626, 627, 628, 629, 630, 631, 632, 633, 634, 635, 636, 637, 638, 639, 640, 641, 642, 643, 644, 645, 646, 647, 648, 649, 650, 651, 652, 653, 654, 655, 656, 657, 658, 659, 660, 661, 662, 663, 664, 665, 666, 667, 668, 669, 670, 671, 672, 673, 674, 675, 676, 677, 678, 679, 680, 681, 682, 683, 684, 685, 686, 687, 688, 689, 690, 691, 692, 693, 694, 695, 696, 697, 698, 699, 700, 701, 702, 703, 704, 705, 706, 707, 708, 709, 710, 711, 712, 713, 714, 715, 716, 717, 718, 719, 720, 721, 722, 723, 724, 725, 726, 727, 728, 729, 730, 731, 732, 733, 734, 735, 736, 737, 738, 739, 740, 741, 742, 743, 744, 745, 746, 747, 748, 749, 750, 751, 752, 753, 754, 755, 756, 757, 758, 759, 760, 761, 762, 763, 764, 765, 766, 767, 768, 769, 770, 771, 772, 773, 774, 775, 776, 777, 778, 779, 780, 781, 782, 783, 784, 785, 786, 787, 788, 789, 790, 791, 792, 793, 794, 795, 796, 797, 798, 799, 800, 801, 802, 803, 804, 805, 806, 807, 808, 809, 810, 811, 812, 813, 814, 815, 816, 817, 818, 819, 820, 821, 822, 823, 824, 825, 826, 827, 828, 829, 830, 831, 832, 833, 834, 835, 836, 837, 838, 839, 840, 841, 842, 843, 844, 845, 846, 847, 848, 849, 850, 851, 852, 853, 854, 855, 856, 857, 858, 859, 860, 861, 862, 863, 864, 865, 866, 867, 868, 869, 870, 871, 872, 873, 874, 875, 876, 877, 878, 879, 880, 881, 882, 883, 884, 885, 886, 887, 888, 889, 890, 891, 892, 893, 894, 895, 896, 897, 898, 899, 900, 901, 902, 903, 904, 905, 906, 907, 908, 909, 910, 911, 912, 913, 914, 915, 916, 917, 918, 919, 920, 921, 922, 923, 924, 925, 926, 927, 928, 929, 930, 931, 932, 933, 934, 935, 936, 937, 938, 939, 940, 941, 942, 943, 944, 945, 946, 947, 948, 949, 950, 951, 952, 953, 954, 955, 956, 957, 958, 959, 960, 961, 962, 963, 964, 965, 966, 967, 968, 969, 970, 971, 972, 973, 974, 975, 976, 977, 978, 979, 980, 981, 982, 983, 984, 985, 986, 987, 988, 989, 990, 991, 992, 993, 994, 995, 996, 997, 998, 999, 1000, 1001, 1002, 1003, 1004, 1005, 1006, 1007, 1008, 1009, 1010, 1011, 1012, 1013, 1014, 1015, 1016, 1017, 1018, 1019, 1020, 1021, 1022, 1023, 1024, 1025, 1026, 1027, 1028, 1029, 1030, 1031, 1032, 1033, 1034, 1035, 1036, 1037, 1038, 1039, 1040, 1041, 1042, 1043, 1044, 1045, 1046, 1047, 1048, 1049, 1050, 1051, 1052, 1053, 1054, 1055, 1056, 1057, 1058, 1059, 1060, 1061, 1062, 1063, 1064, 1065, 1066, 1067, 1068, 1069, 1070, 1071, 1072, 1073, 1074, 1075, 1076, 1077, 1078, 1079, 1080, 1081, 1082, 1083, 1084, 1085, 1086, 1087, 1088, 1089, 1090, 1091, 1092, 1093, 1094, 1095, 1096, 1097, 1098, 1099, 1100, 1101, 1102, 1103, 1104, 1105, 1106, 1107, 1108, 1109, 1110, 1111, 1112, 1113, 1114, 1115, 1116, 1117, 1118, 1119, 1120, 1121, 1122, 1123, 1124, 1125, 1126, 1127, 1128, 1129, 1130, 1131, 1132, 1133, 1134, 1135, 1136, 1137, 1138, 1139, 1140, 1141, 1142, 1143, 1144, 1145, 1146, 1147, 1148, 1149, 1150, 1151, 1152, 1153, 1154, 1155, 1156, 1157, 1158, 1159, 1160, 1161, 1162, 1163, 1164, 1165, 1166, 1167, 1168, 1169, 1170, 1171, 1172, 1173, 1174, 1175, 1176, 1177, 1178, 1179, 1180, 1181, 1182, 1183, 1184, 1185, 1186, 1187, 1188, 1189, 1190, 1191, 1192, 1193, 1194, 1195, 1196, 1197, 1198, 1199, 1200, 1201, 1202, 1203, 1204, 1205, 1206, 1207, 1208, 1209, 1210, 1211, 1212, 1213, 1214, 1215, 1216, 1217, 1218, 1219, 1220, 1221, 1222, 1223, 1224, 1225, 1226, 1227, 1228, 1229, 1230, 1231, 1232, 1233, 1234, 1235, 1236, 1237, 1238, 1239, 1240, 1241, 1242, 1243, 1244, 1245, 1246, 1247, 1248, 1249, 1250, 1251, 1252, 1253, 1254, 1255, 1256, 1257, 1258, 1259, 1260, 1261, 1262, 1263, 1264, 1265, 1266, 1267, 1268, 1269, 1270, 1271, 1272, 1273, 1274, 1275, 1276, 1277, 1278, 1279, 1280, 1281, 1282, 1283, 1284, 1285, 1286, 1287, 1288, 1289, 1290, 1291, 1292, 1293, 1294, 1295, 1296, 1297, 1298, 1299, 1300, 1301, 1302, 1303, 1304, 1305, 1306, 1307, 1308, 1309, 1310, 1311, 1312, 1313, 1314, 1315, 1316, 1317, 1318, 1319, 1320, 1321, 1322, 1323, 1324, 1325, 1326, 1327, 1328, 1329, 1330, 1331, 1332, 1333, 1334, 1335, 1336, 1337, 1338, 1339, 1340, 1341, 1342, 1343, 1344, 1345, 1346, 1347, 1348, 1349, 1350, 1351, 1352, 1353, 1354, 1355, 1356, 1357, 1358, 1359, 1360, 1361, 1362, 1363, 1364, 1365, 1366, 1367, 1368, 1369, 1370, 1371, 1372, 1373, 1374, 1375, 1376, 1377, 1378, 1379, 1380, 1381, 1382, 1383, 1384, 1385, 1386, 1387, 1388, 1389, 1390, 1391, 1392, 1393, 1394, 1395, 1396, 1397, 1398, 1399, 1400, 1401, 1402, 1403, 1404, 1405, 1406, 1407, 1408, 1409, 1410, 1411, 1412, 1413, 1414, 1415, 1416, 1417, 1418, 1419, 1420, 1421, 1422, 1423, 1424, 1425, 1426, 1427, 1428, 1429, 1430, 1431, 1432, 1433, 1434, 1435, 1436, 1437, 1438, 1439, 1440, 1441, 1442, 1443, 1444, 1445, 1446, 1447, 1448, 1449, 1450, 1451, 1452, 1453, 1454, 1455, 1456, 1457, 1458, 1459, 1460, 1461, 1462, 1463, 1464, 1465, 1466, 1467, 1468, 1469, 1470, 1471, 1472, 1473, 1474, 1475, 1476, 1477, 1478, 1479, 1480, 1481, 1482, 1483, 1484, 1485, 1486, 1487, 1488, 1489, 1490, 1491, 1492, 1493, 1494, 14

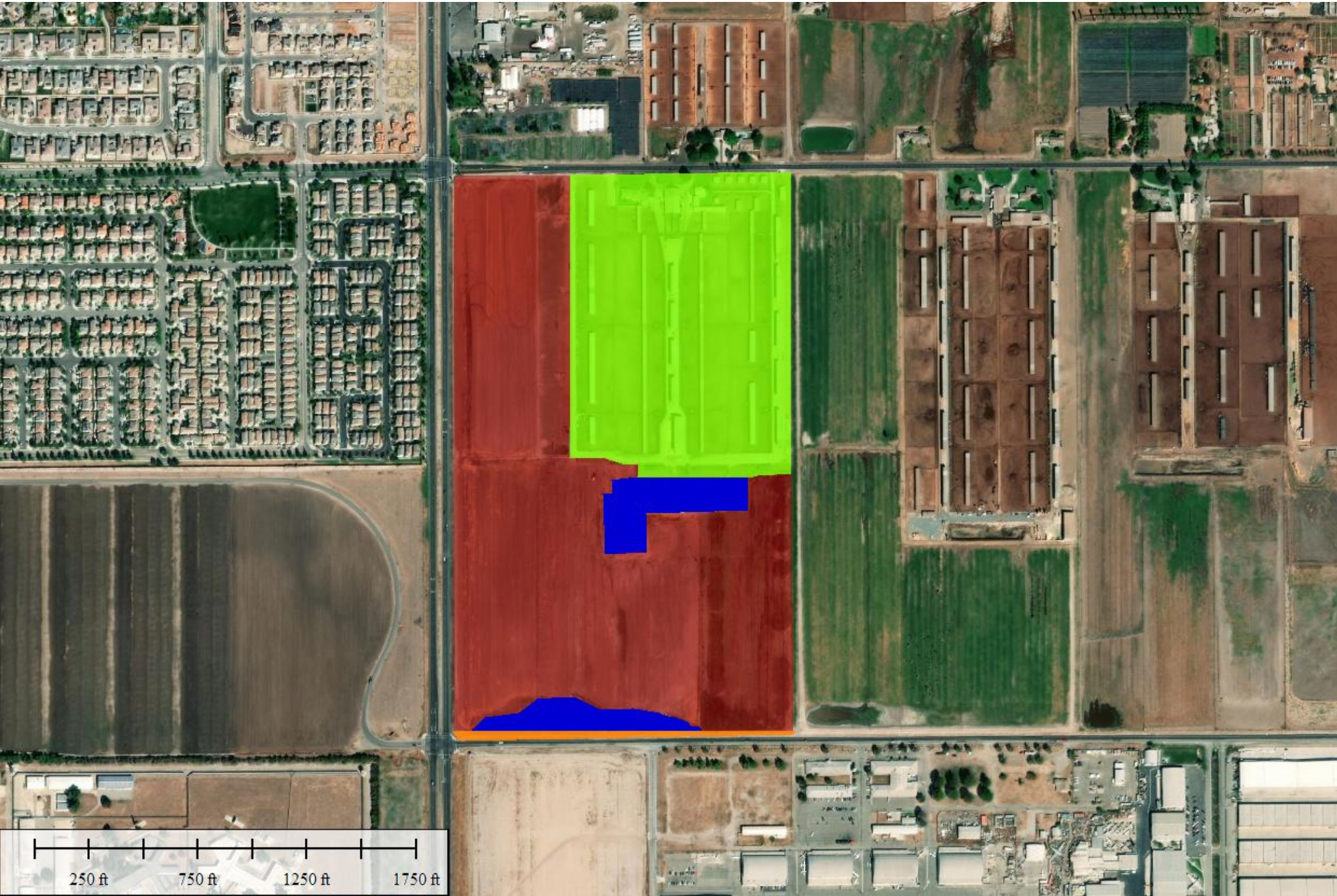






Figure 4
Habitat Map
West Ontario Commerce Center
City of Ontario
San Bernardino County, California

Legend

- | | | | |
|---|---|---|------------------------------------|
|  | 31.9 Acres of Disturbed Agricultural Infrastructure |  | 5.22 Acre of Stock/Retention Ponds |
|  | 1.06 Acres of Disturbed Non-Vegetated |  | 46.0 Acres of Agricultural Fields |

APPENDIX A

Species List

Plant List

<i>Amaranthus albus</i>	Tumbleweed
<i>Ambrosia psilostachya</i>	Western ragweed
<i>Amsinckia intermedia</i>	Common fiddleneck
<i>Brassica nigra</i>	Black mustard
<i>Brassica tournefortii</i>	Saharan mustard
<i>Calystegia</i> sp.	Bindweed
<i>Carax</i> sp.	Sedged
<i>Cynodon dactylon</i>	Bermuda grass
<i>Chenopodium album</i>	Lambs quarters
<i>Datura stramonium</i>	Jimson weed
<i>Erigeron canadensis</i>	Horseweed
<i>Eucalyptus globulus</i>	Blue gum eucalyptus
<i>Euphorbia maculate</i>	Spotted spurge
<i>Fraxinus</i> sp.	Ash tree
<i>Helianthus annus</i>	Common sunflower
<i>Heterotheca grandiflora</i>	Telegraph weed
<i>Juncus</i> sp.	Rushes
<i>Malva parviflora</i>	Cheeseweed
<i>Medicago sativa</i>	Alfalfa
<i>Nicotina glauca</i>	Tree tobacco
<i>Salsola tragus</i>	Russian thistle
<i>Schismus barbatus</i>	Common Mediterranean grass
<i>Tamarix</i> spp.	Tamarisk
<i>Tribulus terrestris</i>	Puncture weed

Washingtonia robusta

Zea sp.

Mexican fan palm

Maiz

Animal List

Buteo jamaicensis

Corvus brachyrhynchos

Corvus corax

Haemorrhous mexicanus

Himantopus mexicanus

Hirundo rustica

Melospiza crissalis

Otospermophilus beecheyi

Sayornis nigricans

Sayornis saya

Streptopelia decaocto

Tyrannus verticalis

Uta stansburiana

Zenaidura macroura

Zonotrichia leucophrys

Red-tailed hawk

American crow

Raven

House finch

Black-necked stilt

Barn swallow

California towhee

California ground squirrel

Black phoebe

Say's phoebe

Eurasian collared dove

Western kingbird

Common side-blotched Lizard

Mourning Dove

White-crowned sparrow

APPENDIX B

Scientific Name	Common Name	Federal Listing	State Listing	CNPS Rank	Other Status	Habitats	General Habitat	Micro Habitat	Presence/Absence
Abronia villosa var. aurita	chaparral sand- verbena	None	None	1B.1	BLM_S- Sensitive USFS_S- Sensitive	Chaparral Coastal scrub Desert dunes	Chaparral, coastal scrub, desert dunes.	Sandy areas. -60- 1570 m.	No habitat for this species. Not present.
Astragalus brauntonii	Braunton's milk- vetch	Endangered	None	1B.1	SB_RSABG- Rancho Santa Ana Botanic Garden SB_SBBG-Santa Barbara Botanic Garden	Chaparral Coastal scrub Limestone Valley & foothill grassland	Chaparral, coastal scrub, valley and foothill grassland.	Recent burns or disturbed areas; usually on sandstone with carbonate layers. Soil specialist; requires shallow soils to defeat pocket gophers and open areas, preferably on hilltops, saddles or bowls between hills. 3-640 m.	No habitat for this species. Not present.
Atriplex coulteri	Coulter's saltbush	None	None	1B.2	SB_RSABG- Rancho Santa Ana Botanic Garden	Coastal bluff scrub Coastal dunes Coastal scrub Valley & foothill grassland	Coastal bluff scrub, coastal dunes, coastal scrub, valley and foothill grassland.	Ocean bluffs, ridgetops, as well as alkaline low places. Alkaline or clay soils. 2-460 m.	No habitat for this species. Not present.
Baccharis malibuensis	Malibu baccharis	None	None	1B.1	SB_RSABG- Rancho Santa Ana Botanic Garden	Chaparral Cismontane woodland Coastal scrub Riparian woodland	Coastal scrub, chaparral, cismontane woodland, riparian woodland.	In Conejo volcanic substrates, often on exposed roadcuts. Sometimes occupies oak woodland habitat. 150-320 m.	No habitat for this species. Not present.

Scientific Name	Common Name	Federal Listing	State Listing	CNPS Rank	Other Status	Habitats	General Habitat	Micro Habitat	Presence/Absence
Calochortus plummerae	Plummer's mariposa-lily	None	None	4.2	SB_RSABG-Rancho Santa Ana Botanic Garden	Chaparral Cismontane woodland Coastal scrub Lower montane coniferous forest Valley & foothill grassland	Coastal scrub, chaparral, valley and foothill grassland, cismontane woodland, lower montane coniferous forest.	Occurs on rocky and sandy sites, usually of granitic or alluvial material. Can be very common after fire. 60-2500 m.	No habitat for this species. Not present.
Calochortus weedii var. intermedius	intermediate mariposa-lily	None	None	1B.2	SB_RSABG-Rancho Santa Ana Botanic Garden USFS_S-Sensitive	Chaparral Coastal scrub Valley & foothill grassland	Coastal scrub, chaparral, valley and foothill grassland.	Dry, rocky calcareous slopes and rock outcrops. 60-1575 m.	No habitat for this species. Not present.
Calystegia felix	lucky morning-glory	None	None	1B.1		Meadow & seep Riparian scrub	Meadows and seeps, riparian scrub.	Sometimes alkaline, alluvial. 9-205 m.	No habitat for this species. Not present.
Centromadia parryi ssp. australis	southern tarplant	None	None	1B.1	SB_RSABG-Rancho Santa Ana Botanic Garden	Marsh & swamp Salt marsh Valley & foothill grassland Vernal pool Wetland	Marshes and swamps (margins), valley and foothill grassland, vernal pools.	Often in disturbed sites near the coast at marsh edges; also in alkaline soils sometimes with saltgrass. Sometimes on vernal pool margins. 0-975 m.	No habitat for this species. Not present.
Centromadia pungens ssp. laevis	smooth tarplant	None	None	1B.1	SB_RSABG-Rancho Santa Ana Botanic Garden	Alkali playa Chenopod scrub Meadow & seep Riparian woodland Valley & foothill grassland Wetland	Valley and foothill grassland, chenopod scrub, meadows and seeps, playas, riparian woodland.	Alkali meadow, alkali scrub; also in disturbed places. 5-1170 m.	No habitat for this species. Not present.

Scientific Name	Common Name	Federal Listing	State Listing	CNPS Rank	Other Status	Habitats	General Habitat	Micro Habitat	Presence/Absence
Chorizanthe parryi var. fernandina	San Fernando Valley spineflower	Proposed Threatened	Endangered	1B.1	SB_RSABG-Rancho Santa Ana Botanic Garden USFS_S-Sensitive	Coastal scrub Valley & foothill grassland	Coastal scrub, valley and foothill grassland.	Sandy soils. 15-1015 m.	No habitat for this species. Not present.
Chorizanthe parryi var. parryi	Parry's spineflower	None	None	1B.1	BLM_S-Sensitive SB_RSABG-Rancho Santa Ana Botanic Garden USFS_S-Sensitive	Chaparral Cismontane woodland Coastal scrub Valley & foothill grassland	Coastal scrub, chaparral, cismontane woodland, valley and foothill grassland.	Dry slopes and flats; sometimes at interface of 2 vegetation types, such as chaparral and oak woodland. Dry, sandy soils. 90-1220 m.	No habitat for this species. Not present.
Chorizanthe polygonoides var. longispina	long-spined spineflower	None	None	1B.2	BLM_S-Sensitive SB_RSABG-Rancho Santa Ana Botanic Garden	Chaparral Coastal scrub Meadow & seep Ultramafic Valley & foothill grassland Vernal pool	Chaparral, coastal scrub, meadows and seeps, valley and foothill grassland, vernal pools.	Gabbroic clay. 30-1540 m.	No habitat for this species. Not present.
Cladium californicum	California saw-grass	None	None	2B.2	USFS_S-Sensitive	Alkali marsh Freshwater marsh Meadow & seep Wetland	Meadows and seeps, marshes and swamps (alkaline or freshwater).	Freshwater or alkaline moist habitats. -20-2135 m.	No meadows or seeps present. Just man-made stock ponds. Not present.
Dodecahema leptoceras	slender-horned spineflower	Endangered	Endangered	1B.1	SB_RSABG-Rancho Santa Ana Botanic Garden	Chaparral Cismontane woodland Coastal scrub	Chaparral, cismontane woodland, coastal scrub (alluvial fan sage scrub).	Flood deposited terraces and washes; associates include Encelia, Dalea, Lepidospartum, etc. Sandy soils. 200-765 m.	No habitat for this species. Not present.

Scientific Name	Common Name	Federal Listing	State Listing	CNPS Rank	Other Status	Habitats	General Habitat	Micro Habitat	Presence/Absence
Dudleya multicaulis	many-stemmed dudleya	None	None	1B.2	BLM_S-Sensitive SB_RSABG-Rancho Santa Ana Botanic Garden USFS_S-Sensitive	Chaparral Coastal scrub Valley & foothill grassland	Chaparral, coastal scrub, valley and foothill grassland.	In heavy, often clayey soils or grassy slopes. 1-910 m.	No habitat for this species. Not present.
Eriastrum densifolium ssp. sanctorum	Santa Ana River woollystar	Endangered	Endangered	1B.1	SB_RSABG-Rancho Santa Ana Botanic Garden	Chaparral Coastal scrub	Coastal scrub, chaparral.	In sandy soils on river floodplains or terraced fluvial deposits. 180-705 m.	No habitat for this species. Not present.
Hesperocyparis forbesii	Tecate cypress	None	None	1B.1	BLM_S-Sensitive SB_RSABG-Rancho Santa Ana Botanic Garden SB_USDA-US Dept of Agriculture USFS_S-Sensitive	Chaparral Closed-cone coniferous forest	Closed-cone coniferous forest, chaparral.	Primarily on north-facing slopes; groves often associated with chaparral. On clay or gabbro. 60-1650 m.	No habitat for this species. Not present.
Horkelia cuneata var. puberula	mesa horkelia	None	None	1B.1	USFS_S-Sensitive	Chaparral Cismontane woodland Coastal scrub	Chaparral, cismontane woodland, coastal scrub.	Sandy or gravelly sites. 15-1645 m.	No habitat for this species. Not present.
Lepechinia cardiophylla	heart-leaved pitcher sage	None	None	1B.2	SB_RSABG-Rancho Santa Ana Botanic Garden USFS_S-Sensitive	Chaparral Cismontane woodland Closed-cone coniferous forest	Closed-cone coniferous forest, chaparral, cismontane woodland.	115-1345 m.	No habitat for this species. Not present.
Lepidium virginicum var. robinsonii	Robinson's pepper-grass	None	None	4.3		Chaparral Coastal scrub	Chaparral, coastal scrub.	Dry soils, shrubland. 4-1435 m.	No habitat for this species. Not present.

Scientific Name	Common Name	Federal Listing	State Listing	CNPS Rank	Other Status	Habitats	General Habitat	Micro Habitat	Presence/Absence
Monardella australis ssp. jokerstii	Jokerst's monardella	None	None	1B.1	USFS_S-Sensitive	Chaparral Lower montane coniferous forest	Lower montane coniferous forest, chaparral.	Steep scree or talus slopes between breccia. Secondary alluvial benches along drainages and washes. 1350-1750 m.	No habitat for this species. Not present.
Monardella hypoleuca ssp. intermedia	intermediate monardella	None	None	1B.3		Chaparral Cismontane woodland Lower montane coniferous forest	Chaparral, cismontane woodland, lower montane coniferous forest (sometimes).	Often in steep, brushy areas. 195-1675 m.	No habitat for this species. Not present.
Muhlenbergia californica	California muhly	None	None	4.3		Chaparral Coastal scrub Lower montane coniferous forest Meadow & seep	Coastal scrub, chaparral, lower montane coniferous forest, meadows and seeps.	Usually found near streams or seeps. 100-2000 m.	No habitat for this species. Not present.
Nasturtium gambelii	Gambel's water cress	Endangered	Threatened	1B.1	SB_RSABG-Rancho Santa Ana Botanic Garden SB_SBBG-Santa Barbara Botanic Garden	Brackish marsh Freshwater marsh Marsh & swamp Wetland	Marshes and swamps.	Freshwater and brackish marshes at the margins of lakes and along streams, in or just above the water level. 5-305 m.	No marshes or swamps present. Just man-made stock ponds. Not present.
Navarretia prostrata	prostrate vernal pool navarretia	None	None	1B.1		Coastal scrub Meadow & seep Valley & foothill grassland Vernal pool Wetland	Coastal scrub, valley and foothill grassland, vernal pools, meadows and seeps.	Alkaline soils in grassland, or in vernal pools. Mesic, alkaline sites. 3-1235 m.	No habitat for this species. Not present.

Scientific Name	Common Name	Federal Listing	State Listing	CNPS Rank	Other Status	Habitats	General Habitat	Micro Habitat	Presence/Absence
Nolina cismontana	chaparral nolina	None	None	1B.2	SB_RSABG-Rancho Santa Ana Botanic Garden SB_SBBG-Santa Barbara Botanic Garden USFS_S-Sensitive	Chaparral Coastal scrub Ultramafic	Chaparral, coastal scrub.	Primarily on sandstone and shale substrates; also known from gabbro. 140-1100 m.	No habitat for this species. Not present.
Penstemon californicus	California beardtongue	None	None	1B.2	SB_RSABG-Rancho Santa Ana Botanic Garden SB_USDA-US Dept of Agriculture USFS_S-Sensitive	Chaparral Lower montane coniferous forest Pinon & juniper woodlands	Chaparral, lower montane coniferous forest, pinyon and juniper woodland.	Stony slopes and shrubby openings; sandy or granitic soils. 1170-2300 m.	No habitat for this species. Not present.
Pentachaeta aurea ssp. allenii	Allen's pentachaeta	None	None	1B.1		Coastal scrub Valley & foothill grassland	Valley and foothill grasslands, coastal scrub.	Openings in scrub or grassland. 75-520 m.	No habitat for this species. Not present.
Phacelia keckii	Santiago Peak phacelia	None	None	1B.3	USFS_S-Sensitive	Chaparral Closed-cone coniferous forest	Closed-cone coniferous forest, chaparral.	Open areas, sometimes along creeks. 545-1525 m.	No habitat for this species. Not present.
Phacelia stellaris	Brand's star phacelia	None	None	1B.1	SB_RSABG-Rancho Santa Ana Botanic Garden	Coastal dunes Coastal scrub	Coastal scrub, coastal dunes.	Open areas. 3-370 m.	No habitat for this species. Not present.
Pseudognaphalium leucocephalum	white rabbit-tobacco	None	None	2B.2		Chaparral Cismontane woodland Coastal scrub Riparian woodland	Riparian woodland, cismontane woodland, coastal scrub, chaparral.	Sandy, gravelly sites. 35-515 m.	No habitat for this species. Not present.
Senecio aphanactis	chaparral ragwort	None	None	2B.2		Chaparral Cismontane woodland Coastal scrub	Chaparral, cismontane woodland, coastal scrub.	Drying alkaline flats. 20-855 m.	No habitat for this species. Not present.

Scientific Name	Common Name	Federal Listing	State Listing	CNPS Rank	Other Status	Habitats	General Habitat	Micro Habitat	Presence/Absence
<i>Sidalcea neomexicana</i>	salt spring checkerbloom	None	None	2B.2	USFS_S-Sensitive	Alkali playa Chaparral Coastal scrub Lower montane coniferous forest Mojavean desert scrub Wetland	Playas, chaparral, coastal scrub, lower montane coniferous forest, Mojavean desert scrub.	Alkali springs and marshes. 3-2380 m.	No habitat for this species. Not present.
<i>Symphotrichum defoliatum</i>	San Bernardino aster	None	None	1B.2	BLM_S-Sensitive USFS_S-Sensitive	Cismontane woodland Coastal scrub Lower montane coniferous forest Marsh & swamp Meadow & seep Valley & foothill grassland	Meadows and seeps, cismontane woodland, coastal scrub, lower montane coniferous forest, marshes and swamps, valley and foothill grassland.	Vernally mesic grassland or near ditches, streams and springs; disturbed areas. 3-2045 m.	No habitat for this species. Not present.
<i>Thysanocarpus rigidus</i>	rigid fringe-pod	None	None	1B.2	BLM_S-Sensitive USFS_S-Sensitive	Pinon & juniper woodlands	Pinyon and juniper woodland.	Dry, rocky slopes and ridges of oak and pine woodland in arid mountain ranges. 425-2165	No habitat for this species. Not present.
California Walnut Woodland	California Walnut Woodland	None	None			Cismontane woodland			Not present.
Riversidian Alluvial Fan Sage Scrub	Riversidian Alluvial Fan Sage Scrub	None	None			Coastal scrub			Not present.
Southern Coast Live Oak Riparian Forest	Southern Coast Live Oak Riparian Forest	None	None			Riparian forest			Not present.
Southern Cottonwood Willow Riparian Forest	Southern Cottonwood Willow Riparian Forest	None	None			Riparian forest			Not present.

Scientific Name	Common Name	Federal Listing	State Listing	CNPS Rank	Other Status	Habitats	General Habitat	Micro Habitat	Presence/Absence
Southern Interior Cypress Forest	Southern Interior Cypress Forest	None	None			Closed-cone coniferous forest			Not present.
Southern Riparian Forest	Southern Riparian Forest	None	None			Riparian forest			Not present.
Southern Riparian Scrub	Southern Riparian Scrub	None	None			Riparian scrub			Not present.
Southern Sycamore Alder Riparian Woodland	Southern Sycamore Alder Riparian Woodland	None	None			Riparian woodland			Not present.
Southern Willow Scrub	Southern Willow Scrub	None	None			Riparian scrub			Not present.
Walnut Forest	Walnut Forest	None	None			Broadleaved upland forest			Not present.

Scientific Name	Common Name	Federal Listing	State Listing	Other Status	Habitats	General Habitat	Micro Habitat	Presence/Absence
Accipiter cooperii	Cooper's hawk	None	None	CDFW_WL-Watch List IUCN_LC-Least Concern	Cismontane woodland Riparian forest Riparian woodland Upper montane coniferous forest	Woodland, chiefly of open, interrupted or marginal type.	Nest sites mainly in riparian growths of deciduous trees, as in canyon bottoms on river flood-plains; also, live oaks.	No nesting habitat for this species present; however, potential foraging habitat occurs on the site. Potential to be present.
Agelaius tricolor	tricolored blackbird	None	Candidate Endangered	BLM_S-Sensitive CDFW_SSC-Species of Special Concern IUCN_EN-Endangered NABCI_RWL-Red Watch List USFWS_BCC-Birds of Conservation Concern	Freshwater marsh Marsh & swamp Swamp Wetland	Highly colonial species, most numerous in Central Valley & vicinity. Largely endemic to California.	Requires open water, protected nesting substrate, and foraging area with insect prey within a few km of the colony.	Habitat is present in the stock ponds. Potential to be present.
Aimophila ruficeps canescens	southern California rufous-crowned sparrow	None	None	CDFW_WL-Watch List	Chaparral Coastal scrub	Resident in Southern California coastal sage scrub and sparse mixed chaparral.	Frequents relatively steep, often rocky hillsides with grass and forb patches.	No habitat for this species present. Not present.
Ammodramus savannarum	grasshopper sparrow	None	None	CDFW_SSC-Species of Special Concern IUCN_LC-Least Concern	Valley & foothill grassland	Dense grasslands on rolling hills, lowland plains, in valleys and on hillsides on lower mountain slopes.	Favors native grasslands with a mix of grasses, forbs and scattered shrubs. Loosely colonial when nesting.	Habitat is present in the agricultural fields. Potential to be present.
Anaxyrus californicus	arroyo toad	Endangered	None	CDFW_SSC-Species of Special Concern IUCN_EN-Endangered	Desert wash Riparian scrub Riparian woodland South coast flowing waters South coast standing waters	Semi-arid regions near washes or intermittent streams, including valley-foothill and desert riparian, desert wash, etc.	Rivers with sandy banks, willows, cottonwoods, and sycamores; loose, gravelly areas of streams in drier parts of range.	No habitat for this species present. Not present.

Scientific Name	Common Name	Federal Listing	State Listing	Other Status	Habitats	General Habitat	Micro Habitat	Presence/Absence
Anniella stebbinsi	southern California legless lizard	None	None	CDFW_SSC-Species of Special Concern USFS_S-Sensitive	Broadleaved upland forest Chaparral Coastal dunes Coastal scrub	Generally south of the Transverse Range, extending to northwestern Baja California. Occurs in sandy or loose loamy soils under sparse vegetation. Disjunct populations in the Tehachapi and Piute Mountains in Kern County.	Variety of habitats; generally in moist, loose soil. They prefer soils with a high moisture content.	Habitat is present in the stock ponds. Potential to be present.
Antrozous pallidus	pallid bat	None	None	BLM_S-Sensitive CDFW_SSC-Species of Special Concern IUCN_LC-Least Concern USFS_S-Sensitive WBWG_H-High Priority	Chaparral Coastal scrub Desert wash Great Basin grassland Great Basin scrub Mojavean desert scrub Riparian woodland Sonoran desert scrub Upper montane coniferous forest Valley & foothill grassland	Deserts, grasslands, shrublands, woodlands and forests. Most common in open, dry habitats with rocky areas for roosting.	Roosts must protect bats from high temperatures. Very sensitive to disturbance of roosting sites.	No habitat for this species present. Not present.
Aquila chrysaetos	golden eagle	None	None	BLM_S-Sensitive CDF_S-Sensitive CDFW_FP-Fully Protected CDFW_WL-Watch List IUCN_LC-Least Concern USFWS_BCC-Birds of Conservation Concern	Broadleaved upland forest Cismontane woodland Coastal prairie Great Basin grassland Great Basin scrub Lower montane coniferous forest Pinon & juniper woodlands Upper montane coniferous forest Valley & foothill grassland	Rolling foothills, mountain areas, sage-juniper flats, and desert.	Cliff-walled canyons provide nesting habitat in most parts of range; also, large trees in open areas.	No habitat for this species present. Not present.
Ardea herodias	great blue heron	None	None	CDF_S-Sensitive IUCN_LC-Least Concern	Brackish marsh Estuary Freshwater marsh Marsh & swamp Riparian forest Wetland	Colonial nester in tall trees, cliffsides, and sequestered spots on marshes.	Rookery sites in close proximity to foraging areas: marshes, lake margins, tide-flats, rivers and streams, wet meadows.	Habitat is present in the stock ponds. Potential to be present.

Scientific Name	Common Name	Federal Listing	State Listing	Other Status	Habitats	General Habitat	Micro Habitat	Presence/Absence
Arizona elegans occidentalis	California glossy snake	None	None	CDFW_SSC-Species of Special Concern		Patchily distributed from the eastern portion of San Francisco Bay, southern San Joaquin Valley, and the Coast, Transverse, and Peninsular ranges, south to Baja California.	Generalist reported from a range of scrub and grassland habitats, often with loose or sandy soils.	Habitat is present. Potential to be present.
Artemisiospiza belli belli	Bell's sage sparrow	None	None	CDFW_WL-Watch List USFWS_BCC-Birds of Conservation Concern	Chaparral Coastal scrub	Nests in chaparral dominated by fairly dense stands of chamise. Found in coastal sage scrub in south of range.	Nest located on the ground beneath a shrub or in a shrub 6-18 inches above ground. Territories about 50 yds apart.	No habitat for this species present. Not present.
Asio otus	long-eared owl	None	None	CDFW_SSC-Species of Special Concern IUCN_LC-Least Concern	Cismontane woodland Great Basin scrub Riparian forest Riparian woodland Upper montane coniferous forest	Riparian bottomlands grown to tall willows and cottonwoods; also, belts of live oak paralleling stream courses.	Require adjacent open land, productive of mice and the presence of old nests of crows, hawks, or magpies for breeding.	No habitat for this species present. Not present.
Aspidoscelis hyperythra	orange-throated whiptail	None	None	CDFW_WL-Watch List IUCN_LC-Least Concern USFS_S-Sensitive	Chaparral Cismontane woodland Coastal scrub	Inhabits low-elevation coastal scrub, chaparral, and valley-foothill hardwood habitats.	Prefers washes and other sandy areas with patches of brush and rocks. Perennial plants necessary for its major food: termites.	No habitat for this species present. Not present.
Aspidoscelis tigris stejnegeri	coastal whiptail	None	None	CDFW_SSC-Species of Special Concern		Found in deserts and semi-arid areas with sparse vegetation and open areas. Also found in woodland & riparian areas.	Ground may be firm soil, sandy, or rocky.	No habitat for this species present. Not present.
Athene cunicularia	burrowing owl	None	None	BLM_S-Sensitive CDFW_SSC-Species of Special Concern IUCN_LC-Least Concern USFWS_BCC-Birds of Conservation Concern	Coastal prairie Coastal scrub Great Basin grassland Great Basin scrub Mojavean desert scrub Sonoran desert scrub Valley & foothill grassland	Open, dry annual or perennial grasslands, deserts, and scrublands characterized by low-growing vegetation.	Subterranean nester, dependent upon burrowing mammals, most notably, the California ground squirrel.	Habitat is present. Potential to be present.

Scientific Name	Common Name	Federal Listing	State Listing	Other Status	Habitats	General Habitat	Micro Habitat	Presence/Absence
Branchinecta sandiegonensis	San Diego fairy shrimp	Endangered	None	IUCN_EN-Endangered	Chaparral Coastal scrub Vernal pool Wetland	Endemic to San Diego and Orange County mesas.	Vernal pools.	Project area is disturbed agriculture area. No habitat for this species present. Not present.
Buteo swainsoni	Swainson's hawk	None	Threatened	BLM_S-Sensitive IUCN_LC-Least Concern USFWS_BCC-Birds of Conservation Concern	Great Basin grassland Riparian forest Riparian woodland Valley & foothill grassland	Breeds in grasslands with scattered trees, juniper-sage flats, riparian areas, savannahs, & agricultural or ranch lands with groves or lines of trees.	Requires adjacent suitable foraging areas such as grasslands, or alfalfa or grain fields supporting rodent populations.	Habitat is present. Potential to be present.
Campylorhynchus brunneicapillus sandiegensis	coastal cactus wren	None	None	CDFW_SSC-Species of Special Concern USFS_S-Sensitive USFWS_BCC-Birds of Conservation Concern	Coastal scrub	Southern California coastal sage scrub.	Wrens require tall opuntia cactus for nesting and roosting.	No habitat for this species present. Not present.
Catostomus santaanae	Santa Ana sucker	Threatened	None	AFS_TH-Threatened IUCN_VU-Vulnerable	Aquatic South coast flowing waters	Endemic to Los Angeles Basin south coastal streams.	Habitat generalists, but prefer sand-rubble-boulder bottoms, cool, clear water, and algae.	No habitat for this species present. Not present.
Chaetodipus fallax fallax	northwestern San Diego pocket mouse	None	None	CDFW_SSC-Species of Special Concern	Chaparral Coastal scrub	Coastal scrub, chaparral, grasslands, sagebrush, etc. in western San Diego County.	Sandy, herbaceous areas, usually in association with rocks or coarse gravel.	No habitat for this species present. Not present.
Choeronycteris mexicana	Mexican long-tongued bat	None	None	CDFW_SSC-Species of Special Concern IUCN_NT-Near Threatened WBWG_H-High Priority	Pinon & juniper woodlands Riparian scrub Sonoran thorn woodland	Occasionally found in San Diego County, which is on the periphery of their range.	Feeds on nectar and pollen of night-blooming succulents. Roosts in relatively well-lit caves, and in and around buildings.	No habitat for this species present. Not present.
Coccyzus americanus occidentalis	western yellow-billed cuckoo	Threatened	Endangered	BLM_S-Sensitive NABCI_RWL-Red Watch List USFS_S-Sensitive USFWS_BCC-Birds of Conservation Concern	Riparian forest	Riparian forest nester, along the broad, lower flood-bottoms of larger river systems.	Nests in riparian jungles of willow, often mixed with cottonwoods, with lower story of blackberry, nettles, or wild grape.	No habitat for this species present. Not present.

Scientific Name	Common Name	Federal Listing	State Listing	Other Status	Habitats	General Habitat	Micro Habitat	Presence/Absence
Coleonyx variegatus abbotti	San Diego banded gecko	None	None	CDFW_SSC-Species of Special Concern	Chaparral Coastal scrub	Coastal & cismontane Southern California.	Found in granite or rocky outcrops in coastal scrub and chaparral habitats.	No habitat for this species present. Not present.
Coturnicops noveboracensis	yellow rail	None	None	CDFW_SSC-Species of Special Concern IUCN_LC-Least Concern NABCI_RWL-Red Watch List USFS_S-Sensitive USFWS_BCC-Birds of Conservation Concern	Freshwater marsh Meadow & seep	Summer resident in eastern Sierra Nevada in Mono County.	Freshwater marshlands.	Habitat is present in the stock ponds. Potential to be present.
Crotalus ruber	red-diamond rattlesnake	None	None	CDFW_SSC-Species of Special Concern USFS_S-Sensitive	Chaparral Mojavean desert scrub Sonoran desert scrub	Chaparral, woodland, grassland, & desert areas from coastal San Diego County to the eastern slopes of the mountains.	Occurs in rocky areas and dense vegetation. Needs rodent burrows, cracks in rocks or surface cover objects.	No habitat for this species present. Not present.
Diplectrona californica	California diplectronan caddisfly	None	None		Aquatic			No stream present. Not present.
Dipodomys merriami parvus	San Bernardino kangaroo rat	Endangered	None	CDFW_SSC-Species of Special Concern	Coastal scrub	Alluvial scrub vegetation on sandy loam substrates characteristic of alluvial fans and flood plains.	Needs early to intermediate seral stages.	No habitat for this species present. Not present.
Dipodomys stephensi	Stephens' kangaroo rat	Endangered	Threatened	IUCN_EN-Endangered	Coastal scrub Valley & foothill grassland	Primarily annual & perennial grasslands, but also occurs in coastal scrub & sagebrush with sparse canopy cover.	Prefers buckwheat, chamise, brome grass and filaree. Will burrow into firm soil.	No habitat for this species present. Not present.
Elanus leucurus	white-tailed kite	None	None	BLM_S-Sensitive CDFW_FP-Fully Protected IUCN_LC-Least Concern	Cismontane woodland Marsh & swamp Riparian woodland Valley & foothill grassland Wetland	Rolling foothills and valley margins with scattered oaks & river bottomlands or marshes next to deciduous woodland.	Open grasslands, meadows, or marshes for foraging close to isolated, dense-topped trees for nesting and perching.	Habitat is present. Potential to be present.

Scientific Name	Common Name	Federal Listing	State Listing	Other Status	Habitats	General Habitat	Micro Habitat	Presence/Absence
Empidonax traillii extimus	southwestern willow flycatcher	Endangered	Endangered	NABCI_RWL-Red Watch List	Riparian woodland	Riparian woodlands in Southern California.		No habitat for this species present. Not present.
Emys marmorata	western pond turtle	None	None	BLM_S-Sensitive CDFW_SSC-Species of Special Concern IUCN_VU-Vulnerable USFS_S-Sensitive	Aquatic Artificial flowing waters Klamath/North coast flowing waters Klamath/North coast standing waters Marsh & swamp Sacramento/San Joaquin flowing waters Sacramento/San Joaquin standing waters South coast flowing waters Wetland	A thoroughly aquatic turtle of ponds, marshes, rivers, streams and irrigation ditches, usually with aquatic vegetation, below 6000 ft elevation.	Needs basking sites and suitable (sandy banks or grassy open fields) upland habitat up to 0.5 km from water for egg-laying.	Habitat is present in the stock ponds. Potential to be present.
Eremophila alpestris actia	California horned lark	None	None	CDFW_WL-Watch List IUCN_LC-Least Concern	Marine intertidal & splash zone communities Meadow & seep	Coastal regions, chiefly from Sonoma County to San Diego County. Also main part of San Joaquin Valley and east to foothills.	Short-grass prairie, "bald" hills, mountain meadows, open coastal plains, fallow grain fields, alkali flats.	Habitat is present. Potential to be present.
Eumops perotis californicus	western mastiff bat	None	None	BLM_S-Sensitive CDFW_SSC-Species of Special Concern WBWG_H-High Priority	Chaparral Cismontane woodland Coastal scrub Valley & foothill grassland	Many open, semi-arid to arid habitats, including conifer & deciduous woodlands, coastal scrub, grasslands, chaparral, etc.	Roosts in crevices in cliff faces, high buildings, trees and tunnels.	Habitat is present. Potential to be present.
Falco columbarius	merlin	None	None	CDFW_WL-Watch List IUCN_LC-Least Concern	Estuary Great Basin grassland Valley & foothill grassland	Seacoast, tidal estuaries, open woodlands, savannahs, edges of grasslands & deserts, farms & ranches.	Clumps of trees or windbreaks are required for roosting in open country.	Habitat is present. Potential to be present.
Falco peregrinus anatum	American peregrine falcon	Delisted	Delisted	CDF_S-Sensitive CDFW_FP-Fully Protected USFWS_BCC-Birds of Conservation Concern		Near wetlands, lakes, rivers, or other water; on cliffs, banks, dunes, mounds; also, human-made structures.	Nest consists of a scrape or a depression or ledge in an open site.	No nesting habitat for this species present; however, potential foraging habitat occurs on the site. Potential to be present.

Scientific Name	Common Name	Federal Listing	State Listing	Other Status	Habitats	General Habitat	Micro Habitat	Presence/Absence
Gila orcuttii	arroyo chub	None	None	AFS_VU-Vulnerable CDFW_SSC-Species of Special Concern USFS_S-Sensitive	Aquatic South coast flowing waters	Native to streams from Malibu Creek to San Luis Rey River basin. Introduced into streams in Santa Clara, Ventura, Santa Ynez, Mojave & San Diego river basins.	Slow water stream sections with mud or sand bottoms. Feeds heavily on aquatic vegetation and associated invertebrates.	No habitat for this species present. Not present.
Haliaeetus leucocephalus	bald eagle	Delisted	Endangered	BLM_S-Sensitive CDF_S-Sensitive CDFW_FP-Fully Protected IUCN_LC-Least Concern USFS_S-Sensitive USFWS_BCC-Birds of Conservation Concern	Lower montane coniferous forest Oldgrowth	Ocean shore, lake margins, and rivers for both nesting and wintering. Most nests within 1 mile of water.	Nests in large, old-growth, or dominant live tree with open branches, especially ponderosa pine. Roosts communally in winter.	No habitat for this species present. Not present.
Icteria virens	yellow-breasted chat	None	None	CDFW_SSC-Species of Special Concern IUCN_LC-Least Concern	Riparian forest Riparian scrub Riparian woodland	Summer resident; inhabits riparian thickets of willow and other brushy tangles near watercourses.	Nests in low, dense riparian, consisting of willow, blackberry, wild grape; forages and nests within 10 ft of ground.	No habitat for this species present. Not present.
Lampropeltis zonata (pulchra)	California mountain kingsnake (San Diego population)	None	None	BLM_S-Sensitive CDFW_WL-Watch List IUCN_LC-Least Concern USFS_S-Sensitive	Chaparral Cismontane woodland Meadow & seep Riparian forest Riparian woodland Upper montane coniferous forest Wetland	Restricted to the San Gabriel and San Jacinto mountains of Southern California.	Inhabits a variety of habitats, including valley-foothill hardwood, coniferous, chaparral, riparian, and wet meadows.	No habitat for this species present. Not present.
Lasiurus xanthinus	western yellow bat	None	None	CDFW_SSC-Species of Special Concern IUCN_LC-Least Concern WBWG_H-High Priority	Desert wash	Found in valley foothill riparian, desert riparian, desert wash, and palm oasis habitats.	Roosts in trees, particularly palms. Forages over water and among trees.	No habitat for this species present. Not present.

Scientific Name	Common Name	Federal Listing	State Listing	Other Status	Habitats	General Habitat	Micro Habitat	Presence/Absence
Laterallus jamaicensis coturniculus	California black rail	None	Threatened	BLM_S-Sensitive CDFW_FP-Fully Protected IUCN_NT-Near Threatened NABCI_RWL-Red Watch List USFWS_BCC-Birds of Conservation Concern	Brackish marsh Freshwater marsh Marsh & swamp Salt marsh Wetland	Inhabits freshwater marshes, wet meadows and shallow margins of saltwater marshes bordering larger bays.	Needs water depths of about 1 inch that do not fluctuate during the year and dense vegetation for nesting habitat.	No habitat for this species present. Not present.
Lithobates pipiens	northern leopard frog	None	None	CDFW_SSC-Species of Special Concern IUCN_LC-Least Concern	Freshwater marsh Great Basin flowing waters Great Basin standing waters Marsh & swamp Wetland	Native range is east of Sierra Nevada-Cascade Crest. Near permanent or semi-permanent water in a variety of habitats.	Highly aquatic species. Shoreline cover, submerged and emergent aquatic vegetation are important habitat characteristics.	No habitat for this species present. Not present.
Myotis yumanensis	Yuma myotis	None	None	BLM_S-Sensitive IUCN_LC-Least Concern WBWG_LM-Low-Medium Priority	Lower montane coniferous forest Riparian forest Riparian woodland Upper montane coniferous forest	Optimal habitats are open forests and woodlands with sources of water over which to feed.	Distribution is closely tied to bodies of water. Maternity colonies in caves, mines, buildings or crevices.	No habitat for this species present. Not present.
Neotoma lepida intermedia	San Diego desert woodrat	None	None	CDFW_SSC-Species of Special Concern	Coastal scrub	Coastal scrub of Southern California from San Diego County to San Luis Obispo County.	Moderate to dense canopies preferred. They are particularly abundant in rock outcrops, rocky cliffs, and slopes.	No habitat for this species present. Not present.
Nyctinomops femorosaccus	pocketed free-tailed bat	None	None	CDFW_SSC-Species of Special Concern IUCN_LC-Least Concern WBWG_M-Medium Priority	Joshua tree woodland Pinon & juniper woodlands Riparian scrub Sonoran desert scrub	Variety of arid areas in Southern California; pine-juniper woodlands, desert scrub, palm oasis, desert wash, desert riparian, etc.	Rocky areas with high cliffs.	No habitat for this species present. Not present.
Nyctinomops macrotis	big free-tailed bat	None	None	CDFW_SSC-Species of Special Concern IUCN_LC-Least Concern WBWG_MH-Medium-High Priority		Low-lying arid areas in Southern California.	Need high cliffs or rocky outcrops for roosting sites. Feeds principally on large moths.	No habitat for this species present. Not present.

Scientific Name	Common Name	Federal Listing	State Listing	Other Status	Habitats	General Habitat	Micro Habitat	Presence/Absence
<i>Perognathus longimembris brevinasus</i>	Los Angeles pocket mouse	None	None	CDFW_SSC-Species of Special Concern	Coastal scrub	Lower elevation grasslands and coastal sage communities in and around the Los Angeles Basin.	Open ground with fine, sandy soils. May not dig extensive burrows, hiding under weeds and dead leaves instead.	No habitat for this species present. Not present.
<i>Phrynosoma blainvillii</i>	coast horned lizard	None	None	BLM_S-Sensitive CDFW_SSC-Species of Special Concern IUCN_LC-Least Concern	Chaparral Cismontane woodland Coastal bluff scrub Coastal scrub Desert wash Pinon & juniper woodlands Riparian scrub Riparian woodland Valley & foothill grassland	Frequents a wide variety of habitats, most common in lowlands along sandy washes with scattered low bushes.	Open areas for sunning, bushes for cover, patches of loose soil for burial, and abundant supply of ants and other insects.	No habitat for this species present. Not present.
<i>Poliophtila californica californica</i>	coastal California gnatcatcher	Threatened	None	CDFW_SSC-Species of Special Concern NABCI_YWL-Yellow Watch List	Coastal bluff scrub Coastal scrub	Obligate, permanent resident of coastal sage scrub below 2500 ft in Southern California.	Low, coastal sage scrub in arid washes, on mesas and slopes. Not all areas classified as coastal sage scrub are occupied.	No habitat for this species present. Not present.
<i>Rhaphiomidas terminatus abdominalis</i>	Delhi Sands flower-loving fly	Endangered	None		Interior dunes	Found only in areas of the Delhi Sands formation in southwestern San Bernardino & northwestern Riverside counties.	Requires fine, sandy soils, often with wholly or partly consolidated dunes & sparse vegetation. Oviposition req. shade.	No habitat for this species present. Not present.
<i>Salvadora hexalepis virgulata</i>	coast patch-nosed snake	None	None	CDFW_SSC-Species of Special Concern	Coastal scrub	Brushy or shrubby vegetation in coastal Southern California.	Require small mammal burrows for refuge and overwintering sites.	No habitat for this species present. Not present.
<i>Setophaga petechia</i>	yellow warbler	None	None	CDFW_SSC-Species of Special Concern USFWS_BCC-Birds of Conservation Concern	Riparian forest Riparian scrub Riparian woodland	Riparian plant associations in close proximity to water. Also nests in montane shrubbery in open conifer forests in Cascades and Sierra Nevada.	Frequently found nesting and foraging in willow shrubs and thickets, and in other riparian plants including cottonwoods, sycamores, ash, and alders.	No habitat for this species present. Not present.
<i>Spea hammondi</i>	western spadefoot	None	None	BLM_S-Sensitive CDFW_SSC-Species of Special Concern IUCN_NT-Near Threatened	Cismontane woodland Coastal scrub Valley & foothill grassland Vernal pool Wetland	Occurs primarily in grassland habitats, but can be found in valley-foothill hardwood woodlands.	Vernal pools are essential for breeding and egg-laying.	No habitat for this species present. Not present.

Scientific Name	Common Name	Federal Listing	State Listing	Other Status	Habitats	General Habitat	Micro Habitat	Presence/Absence
Taricha torosa	Coast Range newt	None	None	CDFW_SSC-Species of Special Concern		Coastal drainages from Mendocino County to San Diego County.	Lives in terrestrial habitats & will migrate over 1 km to breed in ponds, reservoirs & slow moving streams.	No habitat for this species present. Not present.
Taxidea taxus	American badger	None	None	CDFW_SSC-Species of Special Concern IUCN_LC-Least Concern	Alkali marsh Alkali playa Alpine Alpine dwarf scrub Bog & fen Brackish marsh Broadleaved upland forest Chaparral Chenopod scrub Cismontane woodland Closed-cone coniferous forest Coastal bluff scrub Coastal dunes Coastal prairie Coastal scrub Desert dunes Desert wash Freshwater marsh Great Basin grassland Great Basin scrub Interior dunes Ione formation Joshua tree woodland Limestone Lower montane coniferous forest Marsh & swamp Meadow & seep Mojavean desert scrub Montane dwarf scrub North coast coniferous forest Oldgrowth Pavement plain Redwood Riparian forest Riparian scrub Riparian woodland Salt marsh Sonoran desert scrub Sonoran thorn woodland Ultramafic Upper montane	Most abundant in drier open stages of most shrub, forest, and herbaceous habitats, with friable soils.	Needs sufficient food, friable soils and open, uncultivated ground. Preys on burrowing rodents. Digs burrows.	No habitat for this species present. Not present.
Thamnophis hammondi	two-striped gartersnake	None	None	BLM_S-Sensitive CDFW_SSC-Species of Special Concern IUCN_LC-Least Concern USFS_S-Sensitive	Marsh & swamp Riparian scrub Riparian woodland Wetland	Coastal California from vicinity of Salinas to northwest Baja California. From sea to about 7,000 ft elevation.	Highly aquatic, found in or near permanent fresh water. Often along streams with rocky beds and riparian growth.	No habitat for this species present. Not present.
Vireo bellii pusillus	least Bell's vireo	Endangered	Endangered	IUCN_NT-Near Threatened NABCI_YWL-Yellow Watch List	Riparian forest Riparian scrub Riparian woodland	Summer resident of Southern California in low riparian in vicinity of water or in dry river bottoms; below 2000 ft.	Nests placed along margins of bushes or on twigs projecting into pathways, usually willow, Baccharis, mesquite.	No habitat for this species present. Not present.

APPENDIX C



View of agricultural fields on the site.



View of disturbed, agricultural infrastructure on the site.



View of agricultural fields, stock pond, and disturbed, non-vegetated areas on the site.


APPENDIX D

Soil Map—San Bernardino County Southwestern Part, California



MAP LEGEND

Area of Interest (AOI)

 Area of Interest (AOI)

Soils

 Soil Map Unit Polygons

 Soil Map Unit Lines

 Soil Map Unit Points

Special Point Features



Blowout



Borrow Pit



Clay Spot



Closed Depression



Gravel Pit



Gravelly Spot



Landfill



Lava Flow



Marsh or swamp



Mine or Quarry



Miscellaneous Water



Perennial Water



Rock Outcrop



Saline Spot



Sandy Spot



Severely Eroded Spot



Sinkhole



Slide or Slip



Sodic Spot



Spoil Area



Stony Spot



Very Stony Spot



Wet Spot



Other



Special Line Features

Water Features



Streams and Canals

Transportation



Rails



Interstate Highways



US Routes



Major Roads



Local Roads

Background



Aerial Photography

MAP INFORMATION

The soil surveys that comprise your AOI were mapped at 1:24,000.

Warning: Soil Map may not be valid at this scale.

Enlargement of maps beyond the scale of mapping can cause misunderstanding of the detail of mapping and accuracy of soil line placement. The maps do not show the small areas of contrasting soils that could have been shown at a more detailed scale.

Please rely on the bar scale on each map sheet for map measurements.

Source of Map: Natural Resources Conservation Service

Web Soil Survey URL:

Coordinate System: Web Mercator (EPSG:3857)

Maps from the Web Soil Survey are based on the Web Mercator projection, which preserves direction and shape but distorts distance and area. A projection that preserves area, such as the Albers equal-area conic projection, should be used if more accurate calculations of distance or area are required.

This product is generated from the USDA-NRCS certified data as of the version date(s) listed below.

Soil Survey Area: San Bernardino County Southwestern Part, California

Survey Area Data: Version 10, Sep 12, 2018

Soil map units are labeled (as space allows) for map scales 1:50,000 or larger.

Date(s) aerial images were photographed: May 10, 2018—Jun 5, 2018

The orthophoto or other base map on which the soil lines were compiled and digitized probably differs from the background imagery displayed on these maps. As a result, some minor shifting of map unit boundaries may be evident.

Map Unit Legend

Map Unit Symbol	Map Unit Name	Acres in AOI	Percent of AOI
Cb	Chino silt loam	89.8	100.0%
Totals for Area of Interest		89.8	100.0%