

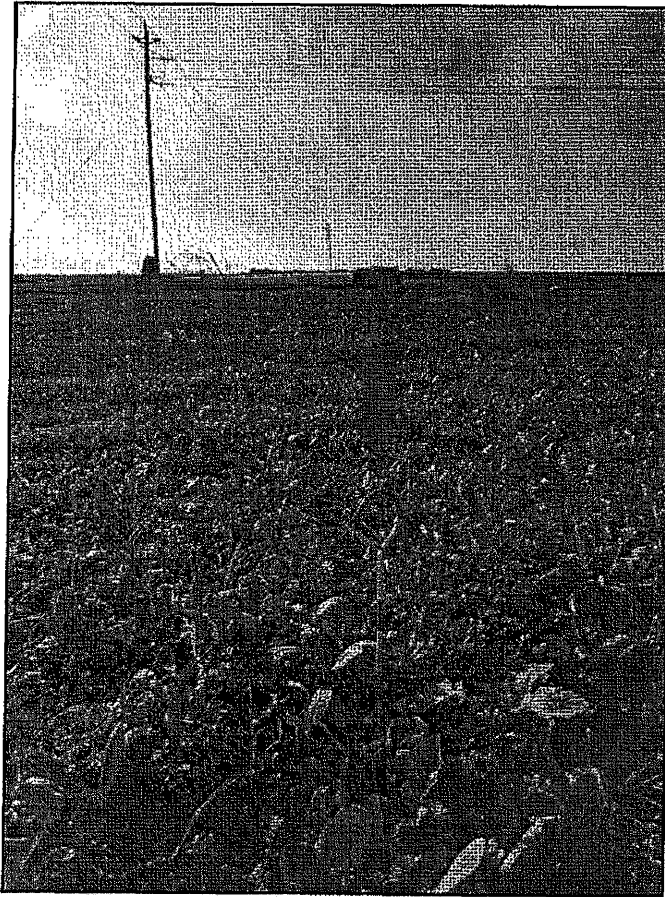
Site Photos – Westlands Water District Monitoring Well Project

Photo 1 –

Site 1 Well
Location
within Fresno
County
marked by the
red arrow.

- Standing in
the field
looking west.

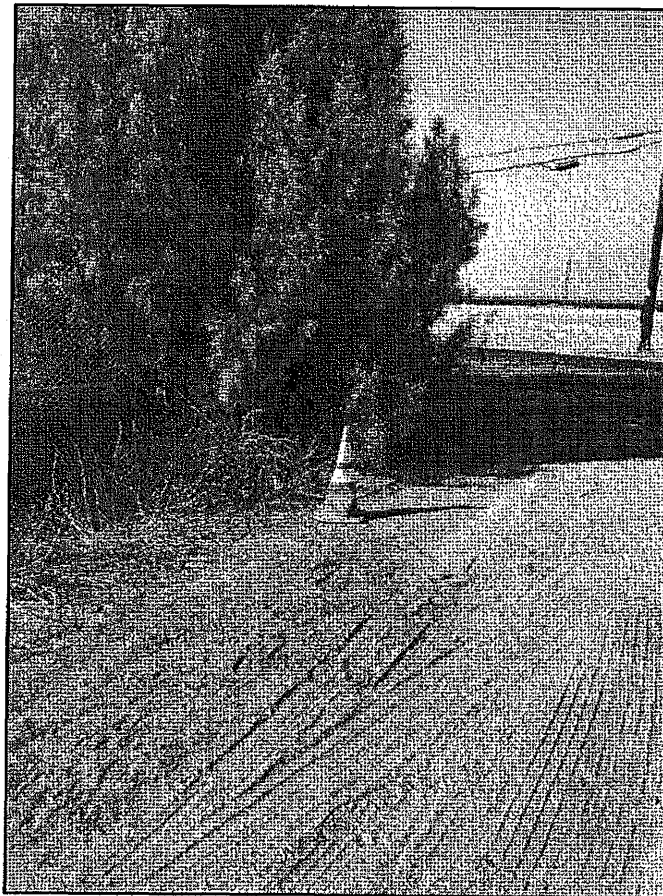


Photo 2 –

Site 2 Well
Location
within Kings
County
marked by the
traffic cone.

- Standing
south of
Plymouth
Avenue
looking north.

Site Photos – Westlands Water District Monitoring Well Project

Photo 3 –

Site 3 Well
Location in
Fresno County
marked by red
arrow.

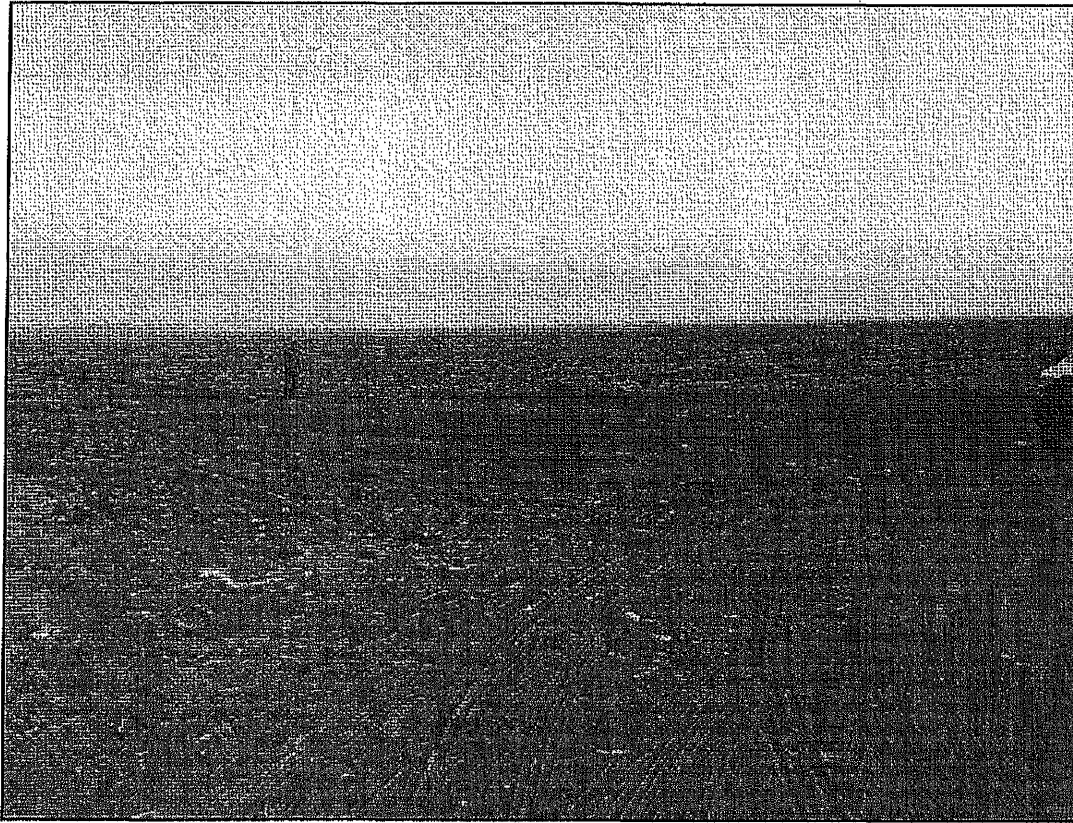


Photo 4 –

Site 4 Well
Location in
Fresno County
marked by the
red arrow.



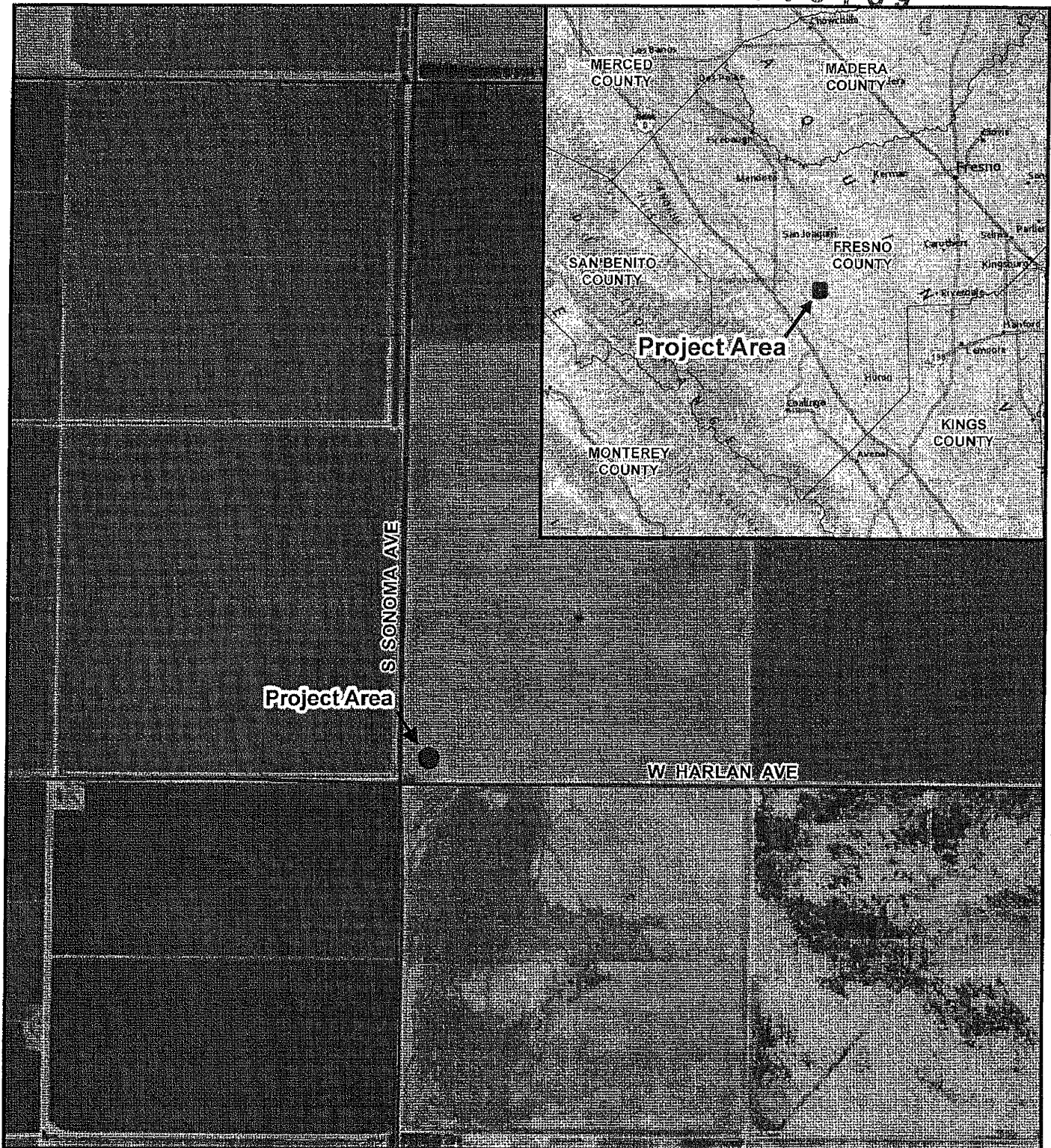
Site Photos – Westlands Water District Monitoring Well Project



Photo 5 –

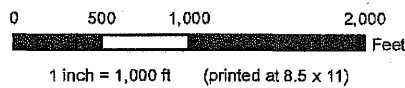
Site 6 Well
Location in
Fresno County
marked by red
arrow.

2019048489



Legend

- Proposed Well Location
- Streets



Imagery Source:
USGS Topo
Inset Imagery:
National Geographic



Within Section 21,
Township 17S, Range 16E,
Fresno County, CA
WESTSIDE
USGS 7.5' Quad

Figure 1: Location Map - Site 1

Westlands Water District - Proposed Monitoring
Well Locations - Fresno County, CA -



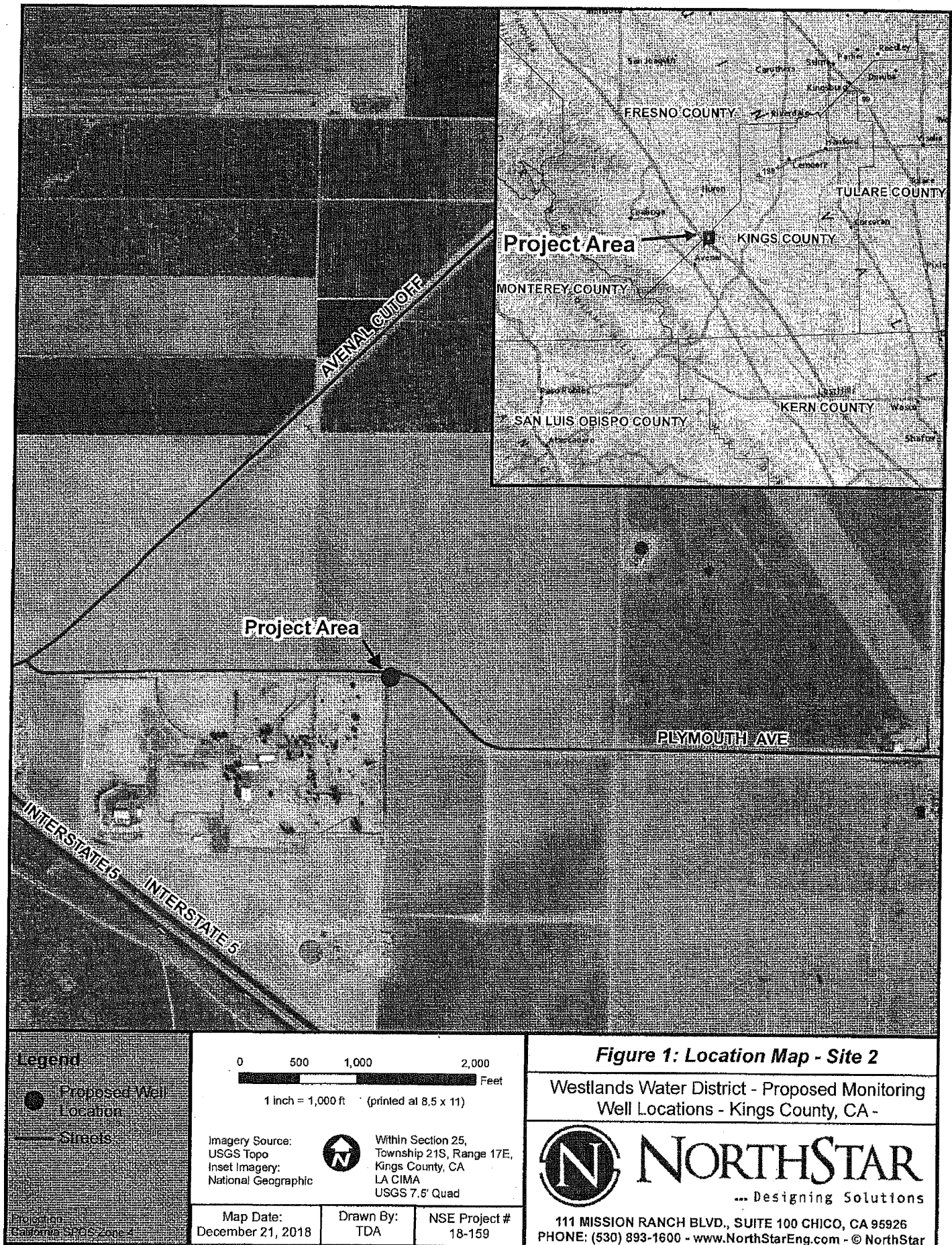
NORTHSTAR
... Designing Solutions

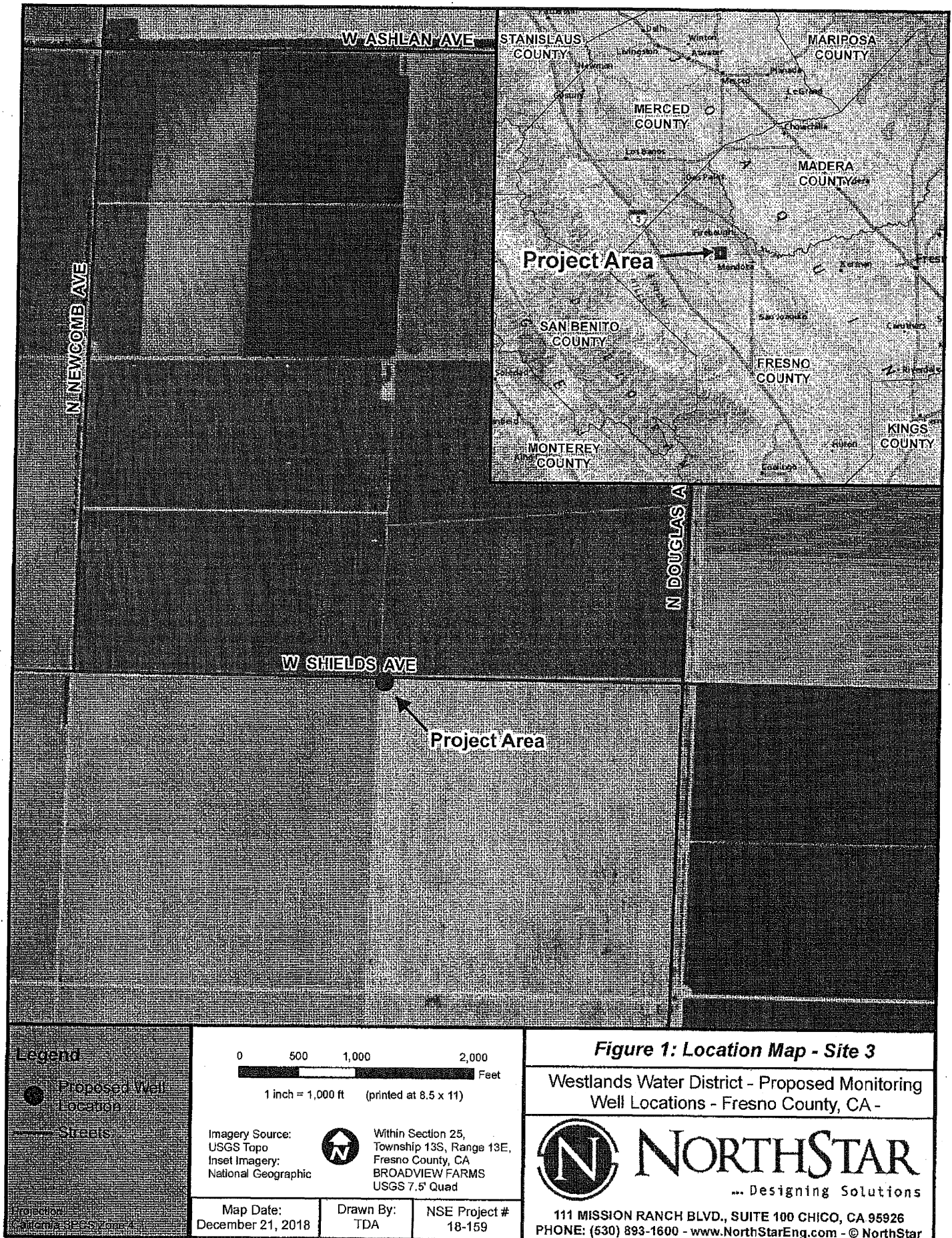
Map Date:
December 21, 2018

Drawn By:
TDA

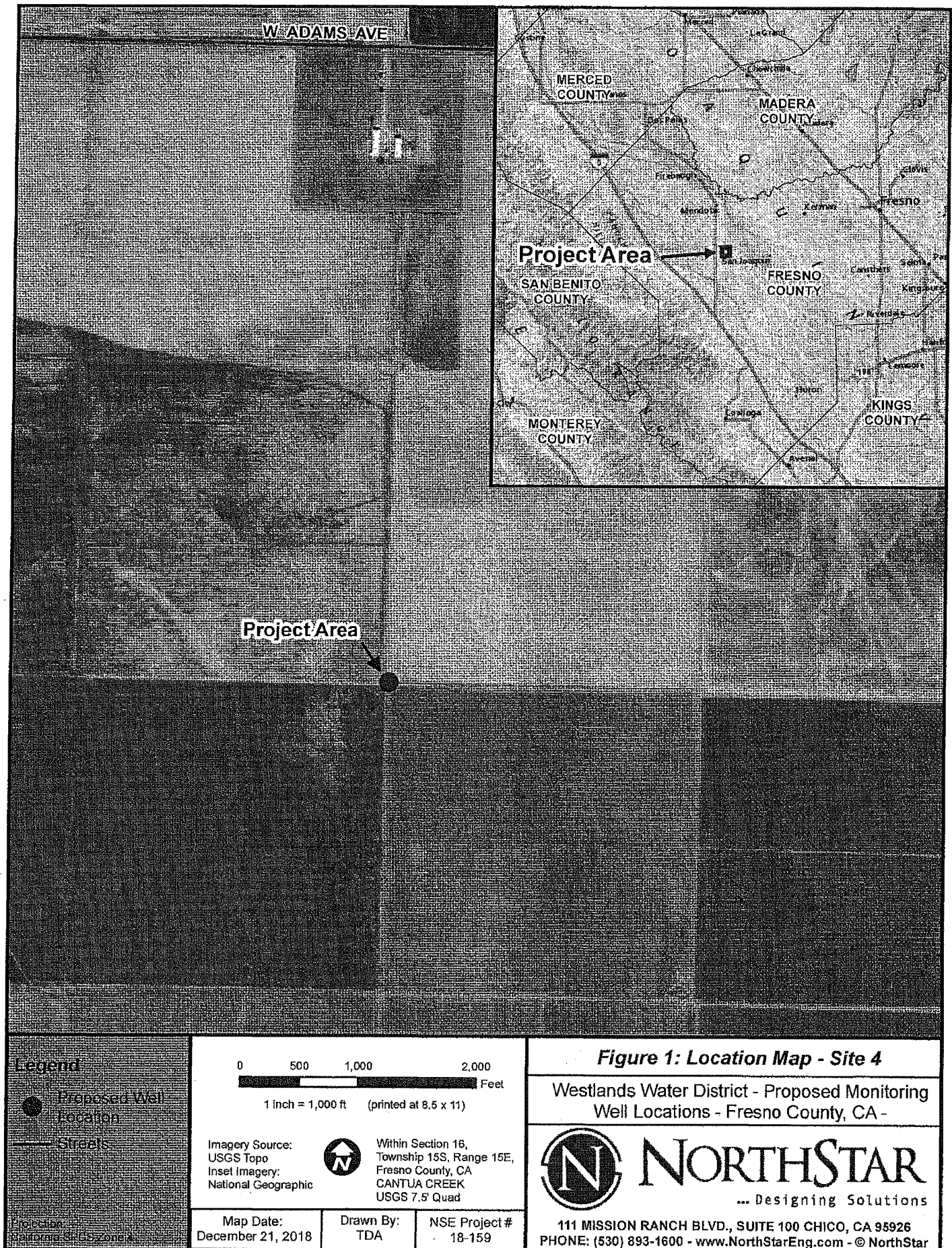
NSE Project #
18-159

111 MISSION RANCH BLVD., SUITE 100 CHICO, CA 95926
PHONE: (530) 893-1600 - www.NorthStarEng.com - © NorthStar





2019048489



2019048489

