



## Rincon Consultants, Inc.

250 East 1st Street, Suite 301  
Los Angeles, California 90012

213 788 4842  
FAX 908 2200

info@rinconconsultants.com  
www.rinconconsultants.com

February 1, 2019  
Project No: 18-06618

Kevin Kollock  
Project Owner  
15810 Cajon Boulevard  
San Bernardino, California 92407  
Via email: [kkollock28@gmail.com](mailto:kkollock28@gmail.com)

**Subject: Noise Memorandum for the Old Route 66 Shooting Range Project  
15810 Cajon Boulevard, San Bernardino County, California**

Dear Mr. Kollock:

Rincon Consultants, Inc. (Rincon) was retained to perform a noise analysis for a proposed shooting range located at 15810 Cajon Boulevard (Old Route 66) near the community of Devore, San Bernardino County, California. Rincon understands that the proposed project involves the expansion of an existing shooting range on an 85-acre ranch property (Gem Ranch). We further understand that a noise analysis for the proposed shooting range expansion is needed to satisfy the requirements for a Conditional Use Permit (CUP) from the County of San Bernardino. The purpose of this memorandum is to evaluate noise levels associated with operation of the proposed shooting range (i.e., gun firing), specifically at the nearest off-site residences.

## Project Location and Description

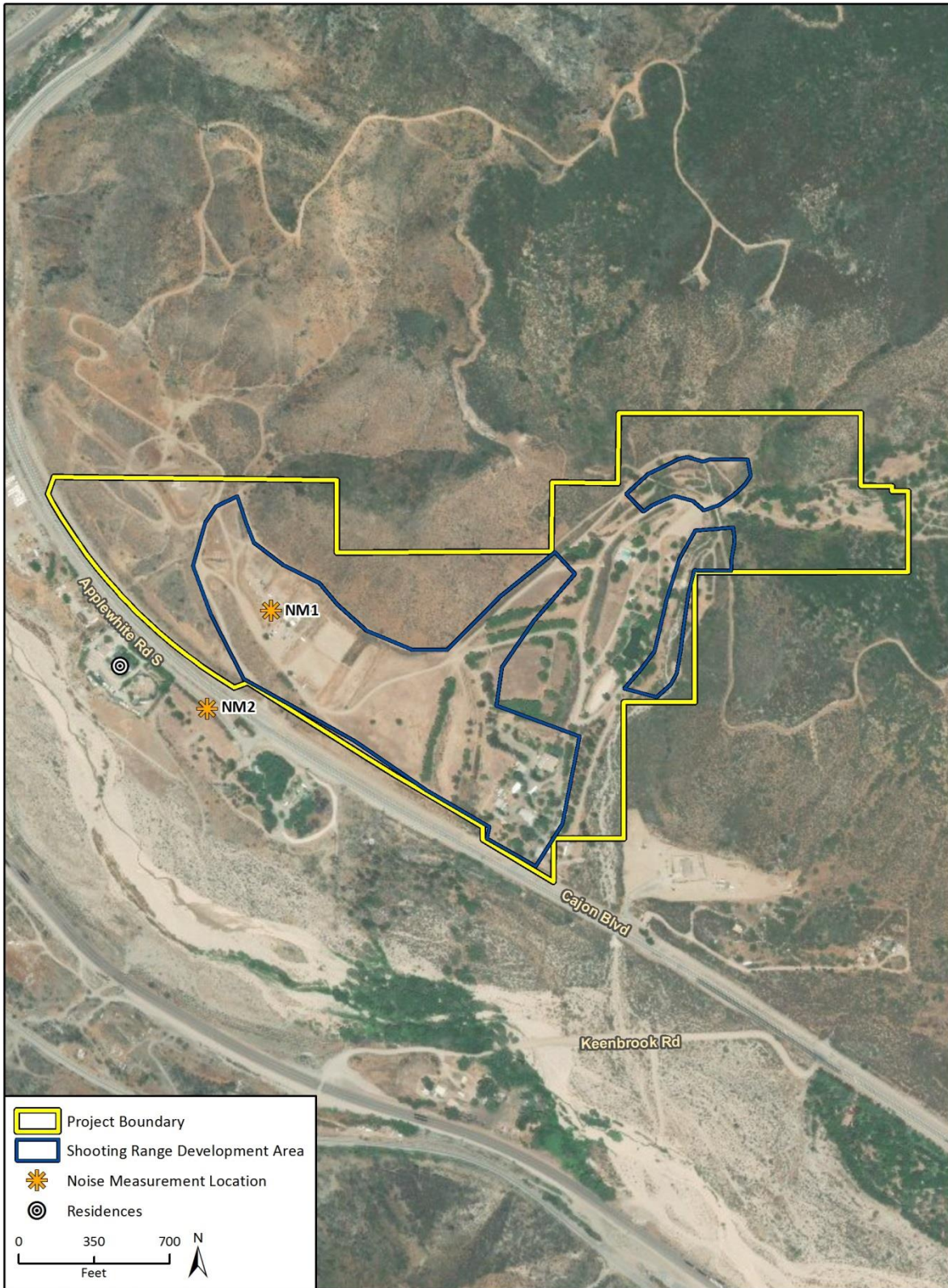
The project site is located on an 85-acre ranch property at 15810 Cajon Boulevard near the community of Devore in San Bernardino County, California. The site contains a cluster of ranch buildings and structures, a shooting range, and an open agricultural area that are surrounded on the north, east, and south by steep-sloped hills.

The project involves expansion of the existing shooting range and the development of supportive facilities on approximately 27 acres of land (Shooting Range Development Area) in the western and central portions of the site. Minor road improvements and well as the demolition and remodeling of some existing buildings, will also occur in the development area. The project also includes the development of two additional shooting areas in the northern portion of the site. Figure 1 shows the location of the development areas within the ranch property.

## Noise Overview

Noise level is generally measured in decibels (dB) using the A-weighted sound pressure level (dBA). The A-weighting scale is an adjustment to the actual sound pressure levels to be consistent with that of human hearing response, which is most sensitive to frequencies around 4,000 Hertz and less sensitive to low frequencies (below 100 Hertz).

Figure 1 Project Boundary and Development Area





Sound pressure level is measured on a logarithmic scale with the 0 dBA level based on the lowest detectable sound pressure level that people can perceive. Based on the logarithmic scale, a doubling of sound energy is equivalent to an increase of 3 dBA, and a sound that is 10 dBA lower than the ambient sound level has no additive effect on the average ambient noise level. Because of the nature of the human ear, a sound must be about 10 dBA greater than the ambient noise level to be judged as twice as loud. In general, a 3 dBA change in the ambient noise level is noticeable to a person with normal hearing, while 1-2 dBA changes generally are not perceptible outside of a controlled environment. Noise levels typically attenuate (or drop-off) at a rate of 6 dBA per doubling of distance from a point source, such as industrial machinery. Noise levels may also be reduced by intervening structures. Typically, a solid wall or berm reduces noise levels by approximately 5 to 10 dBA (Federal Transit Administration [FTA] 2018). The manner in which buildings in California are constructed generally provides for an exterior-to-interior transmission loss of about 25 dBA with closed windows and doors (FTA 2018).

One of the most frequently used noise metrics that considers both duration and sound power level is the equivalent noise level (Leq). The Leq is defined as the single steady A-weighted level that is equivalent to the same amount of energy as that contained in the actual fluctuating levels over a period of time (essentially, the average noise level). Typically, Leq is summed over a one-hour period. Lmax is the highest RMS (root mean squared) sound pressure level within the measuring period, and Lmin is the lowest RMS sound pressure level within the measuring period.

## County of San Bernardino Municipal Code

The County of San Bernardino Municipal Code includes Section 83.01.080, Noise, which establishes standards concerning acceptable noise levels for both noise-sensitive land uses and for noise-generating land uses. Section 83.01.080(c) of the Municipal Code provides noise standards for stationary noise sources by land use types, which differ between daytime hours (7 AM to 10 PM) and nighttime hours (10 PM to 7 AM), with the nighttime being more restrictive. Table 1 shows the County’s standards for stationary noise sources. Stationary noise sources include noise from static equipment (e.g., operational hum of air conditioning units) and noise-generating land uses (e.g., parking lots, playgrounds), or in this case a shooting range.

**Table 1 Noise Standards for Stationary Noise Sources**

Affected Land Uses (Receiving Noise)	Daytime Noise Standard (dBA, Leq)	Nighttime Noise Standard (dBA, Leq)
	7:00 AM – 10:00 PM	10:00 PM – 7:00 AM
Residential	55	45
Professional Services	55	55
Other Commercial	60	60
Industrial	70	70

Source: County of San Bernardino Municipal Code, 83.01.080(c), Table 83-2

According to 83.01.080(c), no person shall operate or cause to be operated a source of sound at a location or allow the creation of noise on property owned, leased, occupied, or otherwise controlled by the person, which causes the noise level, when measured on another property, either incorporated or unincorporated, to exceed any one of the following:

- The noise standard for the receiving land use as specified in Section 83.01.080(b) (Noise-Impacted Areas) for a cumulative period of more than 30 minutes in any hour.



- The noise standard plus 5 dBA for a cumulative period of more than 15 minutes in any hour.
- The noise standard plus 10 dBA for a cumulative period of more than 5 minutes in any hour.
- The noise standard plus 15 dBA for a cumulative period of more than 1 minute in any hour.
- The noise standard plus 20 dBA for any period of time.

According to 83.01.080(e), if the measured ambient level exceeds any of the first four noise limit categories above, the allowable noise exposure standard shall be increased to reflect the ambient noise level. If the ambient noise level exceeds the fifth noise limit category above, the maximum allowable noise level under this category shall be increased to reflect the maximum ambient noise level.

## Ambient and Operational Noise

The noise-sensitive receptors nearest to the proposed shooting range are residences southwest of the development area across Cajon Boulevard (see Figure 1). The property line of these residences is approximately 600 feet from the existing shooting range. To determine existing operational noise levels from shooting range, Rincon Consultants conducted four 5-minute sound level measurements at two locations during a bi-monthly shooting event on the morning of January 26, 2019, using an ANSI Type 2 integrating sound level meter (see attachments for Noise Measurement Data). Two measurements were conducted adjacent to the existing shooting range (Measurement Location 1) and another two measurements were conducted adjacent to the nearest residences (Measurement Location 2). These measurements captured operational noise during active gun firing and ambient noise during a cease fire. Figure 1 shows the locations of the measurements and Table 2 shows the measurement results.

**Table 2 Noise Measurement Results**

Measurement Number	Measurement Location	Sample Period	Approximate Distance to Existing Shooting Range	Ambient Noise Level – Cease Fire Leq[5] (dBA) <sup>1</sup>	Operational Noise Level – Gun Firing Leq[5] (dBA) <sup>1</sup>
1	On-site, adjacent to existing shooting range	10:14 AM – 10:29 AM	50 feet	56.1	81.4
2	Off-site, adjacent to existing residences across Cajon Boulevard	11:34 AM – 11:49 AM	600 feet	65.5	65.0

Source: Rincon Consultants, field measurements on January 26, 2019 using an ANSI Type II Integrating sound level meter. See attachments for noise measurement data.

<sup>1</sup> The equivalent noise level (Leq) is defined as the single steady A-weighted level that is equivalent to the same amount of energy as that contained in the actual fluctuating levels over a period of time (essentially, the average noise level). For this measurement, the Leq was over a 5-minute period (Leq[5]).

As shown in Table 2, the ambient noise level without gun firing was 56.1 dBA Leq at approximately 50 feet from the existing shooting range. The noise level during active gun firing was 81.4 dBA Leq. Ambient noise measured at 65.5 dBA Leq at a distance of approximately 600 feet from the existing shooting area while noise during active gun firing measured at 65.0 dBA Leq. Wind speeds at the project site were in the range of 15-20 miles per hour during the measurements, and wind noise was captured during all four measurements as an ambient noise source. While gun firing was the primary noise source at



Measurement Location 1, wind noise and traffic noise along Cajon Boulevard were the primary noise sources at Measurement Location 2. The noise from active gun firing was observed to be faint in comparison with wind and traffic noise at Measurement Location 2. This is consistent with the measurement results for this location, which actually show a lower noise level during gun firing than under ambient conditions.

## Impact Analysis

The project would expand the existing shooting range and supportive facilities, but would not reduce the approximately 600-foot distance between the shooting range and nearest off-site residences. As shown in Table 2, the noise level during gun firing was 81.4 dBA Leq at a distance of 50 feet (Measurement 1). Based on the measured noise level, an attenuation rate of 6 dBA per doubling of distance for point noise sources, and a distance of 600 feet between the shooting range and off-site residences, we anticipate that operational noise levels from the shooting range would not exceed 60 dBA Leq at the nearest residential property line. This estimate is consistent with the measured noise level at this location during active shooting (Measurement 2), and the finding that gun firing noise, while audible at these residences, is not a primary noise source at this distance from the shooting range. Wind and traffic noise remain the primary noise source at these residences.

As shown in Table 2, ambient noise at these residences measured 65.5 dBA Leq without gun firing noise, which already exceeds the 55 dBA Leq noise standard for residences, per Section 83.01.080(c) of the County's Municipal Code (see Table 1). According to Section 83.01.080(e) of the County's Municipal Code, if the measured ambient level exceeds any of the first four noise limit categories above, the allowable noise exposure standard shall be increased to reflect the ambient noise level. Therefore, for the purpose of this analysis, the residential noise standard is increased to reflect the measured 65.5 dBA Leq ambient noise level. Based on an estimated operational noise level of 60 dBA Leq at the nearest residential property line, noise from the shooting range would continue to be less than ambient noise at the nearest residence and a secondary noise source to wind and traffic; therefore, it would not audibly increase noise at that location and would not exceed the County's noise standards per Section 83.01.080(b).

## Conclusion and Recommendation

Operational activities associated with proposed shooting range located at 15810 Cajon Boulevard would not result in a substantial increase at noise-sensitive receptors in the project site vicinity. Specifically, the proposed project would not expose noise-sensitive residences southwest of the project site to noise exceeding applicable County noise standards.

Sincerely,

**Rincon Consultants, Inc.**

Handwritten signature of Vanessa Villanueva in black ink.

Vanessa Villanueva

Associate Environmental Planner

Handwritten signature of Joe Power in black ink.

Joe Power, AICP CEP

Principal



## References

Federal Transit Administration (FTA). 2018. Transit Noise and Vibration Impact Assessment Manual. Accessed January 2019 at: [https://www.transit.dot.gov/sites/fta.dot.gov/files/docs/research-innovation/118131/transit-noise-and-vibration-impact-assessment-manual-fta-report-no-0123\\_0.pdf](https://www.transit.dot.gov/sites/fta.dot.gov/files/docs/research-innovation/118131/transit-noise-and-vibration-impact-assessment-manual-fta-report-no-0123_0.pdf).

San Bernardino County, California. 2019. Municipal Code. Accessed January 2019 at: [http://library.amlegal.com/nxt/gateway.dll/California/sanbernardinocounty\\_ca/sanbernardinocountycaliforniacodeofordin?f=templates\\$fn=default.htm\\$3.0\\$vid=amlegal:sanbernardinocounty\\_ca](http://library.amlegal.com/nxt/gateway.dll/California/sanbernardinocounty_ca/sanbernardinocountycaliforniacodeofordin?f=templates$fn=default.htm$3.0$vid=amlegal:sanbernardinocounty_ca).

## Attachment

Noise Measurement Data

Freq Weight : A  
Time Weight : FAST  
Level Range : 40-100  
Max dB : 99.9 - 2019/01/26 10: 16: 02  
Level Range : 40-100  
SEL : 106.1  
Leq : 81.4

No. s	Date Time	(dB)
1	2019/01/26 10: 14: 00	54.0
2	2019/01/26 10: 14: 01	57.8
3	2019/01/26 10: 14: 02	57.8
4	2019/01/26 10: 14: 03	55.2
5	2019/01/26 10: 14: 04	62.0
6	2019/01/26 10: 14: 05	51.5
7	2019/01/26 10: 14: 06	61.2
8	2019/01/26 10: 14: 07	61.4
9	2019/01/26 10: 14: 08	51.1
10	2019/01/26 10: 14: 09	56.8
11	2019/01/26 10: 14: 10	62.4
12	2019/01/26 10: 14: 11	63.6
13	2019/01/26 10: 14: 12	60.3
14	2019/01/26 10: 14: 13	66.1
15	2019/01/26 10: 14: 14	64.8
16	2019/01/26 10: 14: 15	64.1
17	2019/01/26 10: 14: 16	56.6
18	2019/01/26 10: 14: 17	58.6
19	2019/01/26 10: 14: 18	60.5
20	2019/01/26 10: 14: 19	70.8
21	2019/01/26 10: 14: 20	64.1
22	2019/01/26 10: 14: 21	64.3
23	2019/01/26 10: 14: 22	46.3
24	2019/01/26 10: 14: 23	60.9
25	2019/01/26 10: 14: 24	54.9
26	2019/01/26 10: 14: 25	63.9
27	2019/01/26 10: 14: 26	59.7
28	2019/01/26 10: 14: 27	50.2
29	2019/01/26 10: 14: 28	46.6
30	2019/01/26 10: 14: 29	59.4
31	2019/01/26 10: 14: 30	66.8
32	2019/01/26 10: 14: 31	53.8
33	2019/01/26 10: 14: 32	89.1
34	2019/01/26 10: 14: 33	94.3
35	2019/01/26 10: 14: 34	90.2
36	2019/01/26 10: 14: 35	79.1
37	2019/01/26 10: 14: 36	55.6
38	2019/01/26 10: 14: 37	65.8
39	2019/01/26 10: 14: 38	82.1
40	2019/01/26 10: 14: 39	69.8
41	2019/01/26 10: 14: 40	64.8
42	2019/01/26 10: 14: 41	55.5
43	2019/01/26 10: 14: 42	50.6
44	2019/01/26 10: 14: 43	95.1
45	2019/01/26 10: 14: 44	77.4
46	2019/01/26 10: 14: 45	57.3
47	2019/01/26 10: 14: 46	50.5
48	2019/01/26 10: 14: 47	93.4
49	2019/01/26 10: 14: 48	68.5
50	2019/01/26 10: 14: 49	53.7
51	2019/01/26 10: 14: 50	59.8
52	2019/01/26 10: 14: 51	93.1
53	2019/01/26 10: 14: 52	92.5
54	2019/01/26 10: 14: 53	88.0
55	2019/01/26 10: 14: 54	61.6
56	2019/01/26 10: 14: 55	53.2
57	2019/01/26 10: 14: 56	89.2
58	2019/01/26 10: 14: 57	93.1
59	2019/01/26 10: 14: 58	68.3
60	2019/01/26 10: 14: 59	54.8
61	2019/01/26 10: 15: 00	61.6
62	2019/01/26 10: 15: 01	59.6
63	2019/01/26 10: 15: 02	58.6
64	2019/01/26 10: 15: 03	62.1
65	2019/01/26 10: 15: 04	51.4
66	2019/01/26 10: 15: 05	64.2
67	2019/01/26 10: 15: 06	60.5
68	2019/01/26 10: 15: 07	47.5
69	2019/01/26 10: 15: 08	49.5
70	2019/01/26 10: 15: 09	50.5
71	2019/01/26 10: 15: 10	50.9
72	2019/01/26 10: 15: 11	47.3
73	2019/01/26 10: 15: 12	48.2
74	2019/01/26 10: 15: 13	44.9
75	2019/01/26 10: 15: 14	45.1
76	2019/01/26 10: 15: 15	44.2
77	2019/01/26 10: 15: 16	47.2
78	2019/01/26 10: 15: 17	48.3
79	2019/01/26 10: 15: 18	59.1
80	2019/01/26 10: 15: 19	54.6
81	2019/01/26 10: 15: 20	63.3
82	2019/01/26 10: 15: 21	46.6
83	2019/01/26 10: 15: 22	48.3
84	2019/01/26 10: 15: 23	47.0
85	2019/01/26 10: 15: 24	59.6

86	2019/01/26	10:15:25	60.2
87	2019/01/26	10:15:26	54.8
88	2019/01/26	10:15:27	53.0
89	2019/01/26	10:15:28	52.5
90	2019/01/26	10:15:29	49.7
91	2019/01/26	10:15:30	45.2
92	2019/01/26	10:15:31	46.3
93	2019/01/26	10:15:32	46.7
94	2019/01/26	10:15:33	47.1
95	2019/01/26	10:15:34	47.4
96	2019/01/26	10:15:35	48.6
97	2019/01/26	10:15:36	64.8
98	2019/01/26	10:15:37	55.8
99	2019/01/26	10:15:38	53.3
100	2019/01/26	10:15:39	53.3
101	2019/01/26	10:15:40	49.8
102	2019/01/26	10:15:41	52.7
103	2019/01/26	10:15:42	51.1
104	2019/01/26	10:15:43	47.5
105	2019/01/26	10:15:44	48.1
106	2019/01/26	10:15:45	45.6
107	2019/01/26	10:15:46	47.6
108	2019/01/26	10:15:47	57.1
109	2019/01/26	10:15:48	63.3
110	2019/01/26	10:15:49	55.5
111	2019/01/26	10:15:50	61.1
112	2019/01/26	10:15:51	56.3
113	2019/01/26	10:15:52	51.6
114	2019/01/26	10:15:53	48.9
115	2019/01/26	10:15:54	53.5
116	2019/01/26	10:15:55	54.6
117	2019/01/26	10:15:56	50.4
118	2019/01/26	10:15:57	53.4
119	2019/01/26	10:15:58	54.9
120	2019/01/26	10:15:59	60.7
121	2019/01/26	10:16:00	51.5
122	2019/01/26	10:16:01	48.3
123	2019/01/26	10:16:02	90.5
124	2019/01/26	10:16:03	95.2
125	2019/01/26	10:16:04	92.6
126	2019/01/26	10:16:05	87.8
127	2019/01/26	10:16:06	90.0
128	2019/01/26	10:16:07	59.8
129	2019/01/26	10:16:08	51.5
130	2019/01/26	10:16:09	49.3
131	2019/01/26	10:16:10	55.8
132	2019/01/26	10:16:11	55.0
133	2019/01/26	10:16:12	48.3
134	2019/01/26	10:16:13	49.9
135	2019/01/26	10:16:14	51.2
136	2019/01/26	10:16:15	53.3
137	2019/01/26	10:16:16	66.2
138	2019/01/26	10:16:17	63.6
139	2019/01/26	10:16:18	57.4
140	2019/01/26	10:16:19	62.0
141	2019/01/26	10:16:20	57.4
142	2019/01/26	10:16:21	53.0
143	2019/01/26	10:16:22	59.2
144	2019/01/26	10:16:23	51.5
145	2019/01/26	10:16:24	58.1
146	2019/01/26	10:16:25	50.3
147	2019/01/26	10:16:26	50.7
148	2019/01/26	10:16:27	54.7
149	2019/01/26	10:16:28	64.4
150	2019/01/26	10:16:29	68.9
151	2019/01/26	10:16:30	63.0
152	2019/01/26	10:16:31	52.8
153	2019/01/26	10:16:32	63.3
154	2019/01/26	10:16:33	63.7
155	2019/01/26	10:16:34	59.3
156	2019/01/26	10:16:35	53.8
157	2019/01/26	10:16:36	60.4
158	2019/01/26	10:16:37	61.2
159	2019/01/26	10:16:38	54.3
160	2019/01/26	10:16:39	56.9
161	2019/01/26	10:16:40	63.0
162	2019/01/26	10:16:41	59.6
163	2019/01/26	10:16:42	56.7
164	2019/01/26	10:16:43	52.2
165	2019/01/26	10:16:44	65.6
166	2019/01/26	10:16:45	68.9
167	2019/01/26	10:16:46	66.7
168	2019/01/26	10:16:47	62.9
169	2019/01/26	10:16:48	64.8
170	2019/01/26	10:16:49	68.2
171	2019/01/26	10:16:50	61.3
172	2019/01/26	10:16:51	58.6
173	2019/01/26	10:16:52	55.5
174	2019/01/26	10:16:53	79.7
175	2019/01/26	10:16:54	66.0
176	2019/01/26	10:16:55	63.1
177	2019/01/26	10:16:56	55.0
178	2019/01/26	10:16:57	55.2
179	2019/01/26	10:16:58	64.9
180	2019/01/26	10:16:59	57.0
181	2019/01/26	10:17:00	69.2
182	2019/01/26	10:17:01	76.2
183	2019/01/26	10:17:02	79.3
184	2019/01/26	10:17:03	83.4



185	2019/01/26	10:17:04	78.5
186	2019/01/26	10:17:05	81.1
187	2019/01/26	10:17:06	75.9
188	2019/01/26	10:17:07	80.0
189	2019/01/26	10:17:08	76.6
190	2019/01/26	10:17:09	71.5
191	2019/01/26	10:17:10	76.4
192	2019/01/26	10:17:11	59.5
193	2019/01/26	10:17:12	62.5
194	2019/01/26	10:17:13	54.0
195	2019/01/26	10:17:14	58.6
196	2019/01/26	10:17:15	57.4
197	2019/01/26	10:17:16	53.9
198	2019/01/26	10:17:17	58.0
199	2019/01/26	10:17:18	60.3
200	2019/01/26	10:17:19	57.8
201	2019/01/26	10:17:20	89.3
202	2019/01/26	10:17:21	85.9
203	2019/01/26	10:17:22	58.2
204	2019/01/26	10:17:23	56.7
205	2019/01/26	10:17:24	57.0
206	2019/01/26	10:17:25	59.5
207	2019/01/26	10:17:26	59.5
208	2019/01/26	10:17:27	84.5
209	2019/01/26	10:17:28	78.9
210	2019/01/26	10:17:29	57.6
211	2019/01/26	10:17:30	51.2
212	2019/01/26	10:17:31	49.1
213	2019/01/26	10:17:32	59.8
214	2019/01/26	10:17:33	87.0
215	2019/01/26	10:17:34	61.4
216	2019/01/26	10:17:35	70.0
217	2019/01/26	10:17:36	80.9
218	2019/01/26	10:17:37	90.5
219	2019/01/26	10:17:38	63.0
220	2019/01/26	10:17:39	76.1
221	2019/01/26	10:17:40	50.0
222	2019/01/26	10:17:41	62.7
223	2019/01/26	10:17:42	53.3
224	2019/01/26	10:17:43	65.8
225	2019/01/26	10:17:44	81.0
226	2019/01/26	10:17:45	86.9
227	2019/01/26	10:17:46	93.2
228	2019/01/26	10:17:47	62.7
229	2019/01/26	10:17:48	68.7
230	2019/01/26	10:17:49	70.9
231	2019/01/26	10:17:50	64.7
232	2019/01/26	10:17:51	59.7
233	2019/01/26	10:17:52	58.7
234	2019/01/26	10:17:53	66.9
235	2019/01/26	10:17:54	61.6
236	2019/01/26	10:17:55	56.5
237	2019/01/26	10:17:56	54.4
238	2019/01/26	10:17:57	56.3
239	2019/01/26	10:17:58	59.9
240	2019/01/26	10:17:59	53.8
241	2019/01/26	10:18:00	55.1
242	2019/01/26	10:18:01	61.7
243	2019/01/26	10:18:02	53.0
244	2019/01/26	10:18:03	64.7
245	2019/01/26	10:18:04	53.4
246	2019/01/26	10:18:05	54.7
247	2019/01/26	10:18:06	54.9
248	2019/01/26	10:18:07	50.7
249	2019/01/26	10:18:08	60.8
250	2019/01/26	10:18:09	58.7
251	2019/01/26	10:18:10	61.5
252	2019/01/26	10:18:11	62.6
253	2019/01/26	10:18:12	62.3
254	2019/01/26	10:18:13	61.1
255	2019/01/26	10:18:14	59.7
256	2019/01/26	10:18:15	59.5
257	2019/01/26	10:18:16	56.1
258	2019/01/26	10:18:17	61.7
259	2019/01/26	10:18:18	57.1
260	2019/01/26	10:18:19	61.1
261	2019/01/26	10:18:20	62.8
262	2019/01/26	10:18:21	64.6
263	2019/01/26	10:18:22	65.0
264	2019/01/26	10:18:23	61.8
265	2019/01/26	10:18:24	59.5
266	2019/01/26	10:18:25	59.6
267	2019/01/26	10:18:26	60.6
268	2019/01/26	10:18:27	59.6
269	2019/01/26	10:18:28	55.7
270	2019/01/26	10:18:29	60.7
271	2019/01/26	10:18:30	62.7
272	2019/01/26	10:18:31	60.1
273	2019/01/26	10:18:32	57.9
274	2019/01/26	10:18:33	50.8
275	2019/01/26	10:18:34	68.8
276	2019/01/26	10:18:35	68.7
277	2019/01/26	10:18:36	70.5
278	2019/01/26	10:18:37	60.6
279	2019/01/26	10:18:38	59.1
280	2019/01/26	10:18:39	65.6
281	2019/01/26	10:18:40	69.1
282	2019/01/26	10:18:41	57.5
283	2019/01/26	10:18:42	71.5

284	2019/01/26	10:18:43	60.0
285	2019/01/26	10:18:44	71.4
286	2019/01/26	10:18:45	72.2
287	2019/01/26	10:18:46	71.6
288	2019/01/26	10:18:47	65.4
289	2019/01/26	10:18:48	74.4
290	2019/01/26	10:18:49	62.8
291	2019/01/26	10:18:50	59.1
292	2019/01/26	10:18:51	75.9
293	2019/01/26	10:18:52	77.4
294	2019/01/26	10:18:53	56.0
295	2019/01/26	10:18:54	83.2
296	2019/01/26	10:18:55	77.9
297	2019/01/26	10:18:56	83.3
298	2019/01/26	10:18:57	87.5
299	2019/01/26	10:18:58	77.0
300	2019/01/26	10:18:59	80.0

Freq Weight : A  
Time Weight : FAST  
Level Range : 40-100  
Max dB : 73.3 - 2019/01/26 10: 24: 05  
Level Range : 40-100  
SEL : 80.8  
Leq : 56.1

No. s	Date Time	(dB)
1	2019/01/26 10: 24: 00	55.8
2	2019/01/26 10: 24: 01	59.9
3	2019/01/26 10: 24: 02	59.3
4	2019/01/26 10: 24: 03	56.3
5	2019/01/26 10: 24: 04	58.1
6	2019/01/26 10: 24: 05	72.9
7	2019/01/26 10: 24: 06	56.6
8	2019/01/26 10: 24: 07	51.5
9	2019/01/26 10: 24: 08	54.0
10	2019/01/26 10: 24: 09	53.4
11	2019/01/26 10: 24: 10	53.2
12	2019/01/26 10: 24: 11	55.0
13	2019/01/26 10: 24: 12	54.0
14	2019/01/26 10: 24: 13	52.8
15	2019/01/26 10: 24: 14	68.5
16	2019/01/26 10: 24: 15	56.0
17	2019/01/26 10: 24: 16	52.6
18	2019/01/26 10: 24: 17	56.6
19	2019/01/26 10: 24: 18	52.5
20	2019/01/26 10: 24: 19	56.5
21	2019/01/26 10: 24: 20	54.3
22	2019/01/26 10: 24: 21	58.4
23	2019/01/26 10: 24: 22	57.1
24	2019/01/26 10: 24: 23	56.8
25	2019/01/26 10: 24: 24	54.4
26	2019/01/26 10: 24: 25	52.5
27	2019/01/26 10: 24: 26	55.1
28	2019/01/26 10: 24: 27	53.2
29	2019/01/26 10: 24: 28	57.5
30	2019/01/26 10: 24: 29	54.2
31	2019/01/26 10: 24: 30	57.7
32	2019/01/26 10: 24: 31	52.6
33	2019/01/26 10: 24: 32	58.9
34	2019/01/26 10: 24: 33	57.1
35	2019/01/26 10: 24: 34	57.9
36	2019/01/26 10: 24: 35	54.0
37	2019/01/26 10: 24: 36	56.4
38	2019/01/26 10: 24: 37	54.8
39	2019/01/26 10: 24: 38	49.0
40	2019/01/26 10: 24: 39	49.8
41	2019/01/26 10: 24: 40	49.7
42	2019/01/26 10: 24: 41	56.3
43	2019/01/26 10: 24: 42	59.0
44	2019/01/26 10: 24: 43	58.4
45	2019/01/26 10: 24: 44	63.6
46	2019/01/26 10: 24: 45	59.6
47	2019/01/26 10: 24: 46	54.4
48	2019/01/26 10: 24: 47	55.3
49	2019/01/26 10: 24: 48	57.5
50	2019/01/26 10: 24: 49	53.9
51	2019/01/26 10: 24: 50	58.7
52	2019/01/26 10: 24: 51	60.7
53	2019/01/26 10: 24: 52	53.9
54	2019/01/26 10: 24: 53	56.1
55	2019/01/26 10: 24: 54	54.0
56	2019/01/26 10: 24: 55	52.9
57	2019/01/26 10: 24: 56	57.3
58	2019/01/26 10: 24: 57	54.8
59	2019/01/26 10: 24: 58	56.7
60	2019/01/26 10: 24: 59	58.0
61	2019/01/26 10: 25: 00	56.7
62	2019/01/26 10: 25: 01	53.2
63	2019/01/26 10: 25: 02	54.5
64	2019/01/26 10: 25: 03	50.9
65	2019/01/26 10: 25: 04	50.7
66	2019/01/26 10: 25: 05	53.2
67	2019/01/26 10: 25: 06	52.3
68	2019/01/26 10: 25: 07	54.7
69	2019/01/26 10: 25: 08	51.7
70	2019/01/26 10: 25: 09	54.7
71	2019/01/26 10: 25: 10	52.1
72	2019/01/26 10: 25: 11	55.5
73	2019/01/26 10: 25: 12	56.6
74	2019/01/26 10: 25: 13	57.2
75	2019/01/26 10: 25: 14	56.2
76	2019/01/26 10: 25: 15	54.0
77	2019/01/26 10: 25: 16	55.6
78	2019/01/26 10: 25: 17	58.5
79	2019/01/26 10: 25: 18	57.2
80	2019/01/26 10: 25: 19	61.2
81	2019/01/26 10: 25: 20	58.5
82	2019/01/26 10: 25: 21	54.4
83	2019/01/26 10: 25: 22	58.3
84	2019/01/26 10: 25: 23	62.9
85	2019/01/26 10: 25: 24	54.7

86	2019/01/26	10: 25: 25	66. 3
87	2019/01/26	10: 25: 26	56. 7
88	2019/01/26	10: 25: 27	53. 0
89	2019/01/26	10: 25: 28	54. 7
90	2019/01/26	10: 25: 29	53. 1
91	2019/01/26	10: 25: 30	53. 3
92	2019/01/26	10: 25: 31	56. 5
93	2019/01/26	10: 25: 32	53. 1
94	2019/01/26	10: 25: 33	56. 8
95	2019/01/26	10: 25: 34	55. 1
96	2019/01/26	10: 25: 35	58. 1
97	2019/01/26	10: 25: 36	57. 1
98	2019/01/26	10: 25: 37	52. 2
99	2019/01/26	10: 25: 38	52. 6
100	2019/01/26	10: 25: 39	51. 2
101	2019/01/26	10: 25: 40	54. 5
102	2019/01/26	10: 25: 41	51. 0
103	2019/01/26	10: 25: 42	48. 9
104	2019/01/26	10: 25: 43	48. 7
105	2019/01/26	10: 25: 44	52. 0
106	2019/01/26	10: 25: 45	49. 8
107	2019/01/26	10: 25: 46	50. 4
108	2019/01/26	10: 25: 47	54. 8
109	2019/01/26	10: 25: 48	54. 1
110	2019/01/26	10: 25: 49	59. 5
111	2019/01/26	10: 25: 50	57. 0
112	2019/01/26	10: 25: 51	55. 4
113	2019/01/26	10: 25: 52	52. 0
114	2019/01/26	10: 25: 53	53. 8
115	2019/01/26	10: 25: 54	49. 5
116	2019/01/26	10: 25: 55	49. 8
117	2019/01/26	10: 25: 56	52. 3
118	2019/01/26	10: 25: 57	53. 6
119	2019/01/26	10: 25: 58	52. 8
120	2019/01/26	10: 25: 59	56. 2
121	2019/01/26	10: 26: 00	55. 2
122	2019/01/26	10: 26: 01	57. 7
123	2019/01/26	10: 26: 02	52. 6
124	2019/01/26	10: 26: 03	52. 9
125	2019/01/26	10: 26: 04	51. 0
126	2019/01/26	10: 26: 05	53. 6
127	2019/01/26	10: 26: 06	52. 0
128	2019/01/26	10: 26: 07	55. 3
129	2019/01/26	10: 26: 08	53. 7
130	2019/01/26	10: 26: 09	56. 1
131	2019/01/26	10: 26: 10	51. 2
132	2019/01/26	10: 26: 11	49. 4
133	2019/01/26	10: 26: 12	51. 1
134	2019/01/26	10: 26: 13	48. 3
135	2019/01/26	10: 26: 14	51. 4
136	2019/01/26	10: 26: 15	49. 0
137	2019/01/26	10: 26: 16	55. 6
138	2019/01/26	10: 26: 17	52. 3
139	2019/01/26	10: 26: 18	49. 1
140	2019/01/26	10: 26: 19	50. 3
141	2019/01/26	10: 26: 20	49. 3
142	2019/01/26	10: 26: 21	53. 4
143	2019/01/26	10: 26: 22	52. 1
144	2019/01/26	10: 26: 23	50. 4
145	2019/01/26	10: 26: 24	51. 9
146	2019/01/26	10: 26: 25	49. 7
147	2019/01/26	10: 26: 26	50. 3
148	2019/01/26	10: 26: 27	50. 5
149	2019/01/26	10: 26: 28	49. 3
150	2019/01/26	10: 26: 29	53. 2
151	2019/01/26	10: 26: 30	53. 7
152	2019/01/26	10: 26: 31	52. 2
153	2019/01/26	10: 26: 32	49. 8
154	2019/01/26	10: 26: 33	58. 0
155	2019/01/26	10: 26: 34	48. 5
156	2019/01/26	10: 26: 35	50. 1
157	2019/01/26	10: 26: 36	51. 4
158	2019/01/26	10: 26: 37	60. 7
159	2019/01/26	10: 26: 38	52. 8
160	2019/01/26	10: 26: 39	51. 3
161	2019/01/26	10: 26: 40	47. 5
162	2019/01/26	10: 26: 41	49. 9
163	2019/01/26	10: 26: 42	49. 7
164	2019/01/26	10: 26: 43	48. 7
165	2019/01/26	10: 26: 44	49. 0
166	2019/01/26	10: 26: 45	49. 3
167	2019/01/26	10: 26: 46	49. 4
168	2019/01/26	10: 26: 47	48. 4
169	2019/01/26	10: 26: 48	49. 1
170	2019/01/26	10: 26: 49	49. 2
171	2019/01/26	10: 26: 50	48. 4
172	2019/01/26	10: 26: 51	49. 2
173	2019/01/26	10: 26: 52	49. 9
174	2019/01/26	10: 26: 53	47. 9
175	2019/01/26	10: 26: 54	50. 2
176	2019/01/26	10: 26: 55	53. 5
177	2019/01/26	10: 26: 56	51. 5
178	2019/01/26	10: 26: 57	54. 5
179	2019/01/26	10: 26: 58	50. 8
180	2019/01/26	10: 26: 59	49. 6
181	2019/01/26	10: 27: 00	50. 3
182	2019/01/26	10: 27: 01	51. 7
183	2019/01/26	10: 27: 02	49. 7
184	2019/01/26	10: 27: 03	49. 1

185	2019/01/26	10:27:04	51.6
186	2019/01/26	10:27:05	49.8
187	2019/01/26	10:27:06	48.7
188	2019/01/26	10:27:07	48.5
189	2019/01/26	10:27:08	48.4
190	2019/01/26	10:27:09	48.8
191	2019/01/26	10:27:10	49.9
192	2019/01/26	10:27:11	51.3
193	2019/01/26	10:27:12	49.9
194	2019/01/26	10:27:13	49.8
195	2019/01/26	10:27:14	49.6
196	2019/01/26	10:27:15	51.0
197	2019/01/26	10:27:16	51.4
198	2019/01/26	10:27:17	49.9
199	2019/01/26	10:27:18	49.9
200	2019/01/26	10:27:19	50.4
201	2019/01/26	10:27:20	52.4
202	2019/01/26	10:27:21	50.5
203	2019/01/26	10:27:22	52.0
204	2019/01/26	10:27:23	51.7
205	2019/01/26	10:27:24	54.7
206	2019/01/26	10:27:25	54.4
207	2019/01/26	10:27:26	50.5
208	2019/01/26	10:27:27	50.3
209	2019/01/26	10:27:28	51.3
210	2019/01/26	10:27:29	53.2
211	2019/01/26	10:27:30	50.7
212	2019/01/26	10:27:31	50.2
213	2019/01/26	10:27:32	52.7
214	2019/01/26	10:27:33	50.2
215	2019/01/26	10:27:34	52.2
216	2019/01/26	10:27:35	50.1
217	2019/01/26	10:27:36	52.3
218	2019/01/26	10:27:37	56.0
219	2019/01/26	10:27:38	56.0
220	2019/01/26	10:27:39	51.1
221	2019/01/26	10:27:40	48.4
222	2019/01/26	10:27:41	50.1
223	2019/01/26	10:27:42	48.6
224	2019/01/26	10:27:43	49.6
225	2019/01/26	10:27:44	50.2
226	2019/01/26	10:27:45	50.1
227	2019/01/26	10:27:46	52.2
228	2019/01/26	10:27:47	50.7
229	2019/01/26	10:27:48	50.3
230	2019/01/26	10:27:49	50.6
231	2019/01/26	10:27:50	50.2
232	2019/01/26	10:27:51	52.6
233	2019/01/26	10:27:52	51.9
234	2019/01/26	10:27:53	55.2
235	2019/01/26	10:27:54	55.7
236	2019/01/26	10:27:55	52.4
237	2019/01/26	10:27:56	51.7
238	2019/01/26	10:27:57	51.0
239	2019/01/26	10:27:58	51.8
240	2019/01/26	10:27:59	51.7
241	2019/01/26	10:28:00	54.5
242	2019/01/26	10:28:01	53.8
243	2019/01/26	10:28:02	55.7
244	2019/01/26	10:28:03	60.2
245	2019/01/26	10:28:04	53.5
246	2019/01/26	10:28:05	54.3
247	2019/01/26	10:28:06	54.0
248	2019/01/26	10:28:07	55.2
249	2019/01/26	10:28:08	52.7
250	2019/01/26	10:28:09	56.0
251	2019/01/26	10:28:10	58.3
252	2019/01/26	10:28:11	53.9
253	2019/01/26	10:28:12	56.4
254	2019/01/26	10:28:13	54.2
255	2019/01/26	10:28:14	57.8
256	2019/01/26	10:28:15	54.7
257	2019/01/26	10:28:16	55.4
258	2019/01/26	10:28:17	54.2
259	2019/01/26	10:28:18	57.8
260	2019/01/26	10:28:19	57.7
261	2019/01/26	10:28:20	59.1
262	2019/01/26	10:28:21	55.4
263	2019/01/26	10:28:22	57.1
264	2019/01/26	10:28:23	55.7
265	2019/01/26	10:28:24	57.3
266	2019/01/26	10:28:25	55.8
267	2019/01/26	10:28:26	54.3
268	2019/01/26	10:28:27	53.3
269	2019/01/26	10:28:28	52.4
270	2019/01/26	10:28:29	53.9
271	2019/01/26	10:28:30	55.1
272	2019/01/26	10:28:31	54.0
273	2019/01/26	10:28:32	55.8
274	2019/01/26	10:28:33	56.1
275	2019/01/26	10:28:34	60.0
276	2019/01/26	10:28:35	57.1
277	2019/01/26	10:28:36	54.8
278	2019/01/26	10:28:37	54.9
279	2019/01/26	10:28:38	52.9
280	2019/01/26	10:28:39	52.1
281	2019/01/26	10:28:40	55.3
282	2019/01/26	10:28:41	55.1
283	2019/01/26	10:28:42	53.2

284	2019/01/26	10: 28: 43	52. 0
285	2019/01/26	10: 28: 44	56. 3
286	2019/01/26	10: 28: 45	53. 3
287	2019/01/26	10: 28: 46	57. 8
288	2019/01/26	10: 28: 47	54. 9
289	2019/01/26	10: 28: 48	51. 4
290	2019/01/26	10: 28: 49	53. 0
291	2019/01/26	10: 28: 50	51. 0
292	2019/01/26	10: 28: 51	54. 4
293	2019/01/26	10: 28: 52	53. 1
294	2019/01/26	10: 28: 53	56. 3
295	2019/01/26	10: 28: 54	51. 2
296	2019/01/26	10: 28: 55	57. 2
297	2019/01/26	10: 28: 56	53. 7
298	2019/01/26	10: 28: 57	54. 0
299	2019/01/26	10: 28: 58	51. 5
300	2019/01/26	10: 28: 59	52. 6

Freq Weight : A  
Time Weight : FAST  
Level Range : 40-100  
Max dB : 85.0 - 2019/01/26 11: 25: 45  
Level Range : 40-100  
SEL : 89.7  
Leq : 65.0

No. s	Date Time	(dB)
1	2019/01/26 11: 24: 20	56.6
2	2019/01/26 11: 24: 21	57.4
3	2019/01/26 11: 24: 22	59.5
4	2019/01/26 11: 24: 23	60.9
5	2019/01/26 11: 24: 24	69.4
6	2019/01/26 11: 24: 25	66.8
7	2019/01/26 11: 24: 26	69.1
8	2019/01/26 11: 24: 27	70.9
9	2019/01/26 11: 24: 28	65.2
10	2019/01/26 11: 24: 29	62.2
11	2019/01/26 11: 24: 30	63.6
12	2019/01/26 11: 24: 31	61.3
13	2019/01/26 11: 24: 32	62.5
14	2019/01/26 11: 24: 33	60.7
15	2019/01/26 11: 24: 34	59.7
16	2019/01/26 11: 24: 35	59.8
17	2019/01/26 11: 24: 36	63.5
18	2019/01/26 11: 24: 37	61.5
19	2019/01/26 11: 24: 38	65.7
20	2019/01/26 11: 24: 39	68.2
21	2019/01/26 11: 24: 40	67.0
22	2019/01/26 11: 24: 41	62.7
23	2019/01/26 11: 24: 42	64.7
24	2019/01/26 11: 24: 43	68.5
25	2019/01/26 11: 24: 44	71.6
26	2019/01/26 11: 24: 45	66.1
27	2019/01/26 11: 24: 46	59.8
28	2019/01/26 11: 24: 47	58.9
29	2019/01/26 11: 24: 48	57.5
30	2019/01/26 11: 24: 49	57.3
31	2019/01/26 11: 24: 50	57.2
32	2019/01/26 11: 24: 51	58.5
33	2019/01/26 11: 24: 52	62.4
34	2019/01/26 11: 24: 53	66.0
35	2019/01/26 11: 24: 54	64.6
36	2019/01/26 11: 24: 55	62.1
37	2019/01/26 11: 24: 56	63.5
38	2019/01/26 11: 24: 57	63.0
39	2019/01/26 11: 24: 58	68.9
40	2019/01/26 11: 24: 59	64.0
41	2019/01/26 11: 25: 00	63.6
42	2019/01/26 11: 25: 01	64.4
43	2019/01/26 11: 25: 02	61.8
44	2019/01/26 11: 25: 03	61.9
45	2019/01/26 11: 25: 04	57.3
46	2019/01/26 11: 25: 05	61.9
47	2019/01/26 11: 25: 06	58.0
48	2019/01/26 11: 25: 07	59.7
49	2019/01/26 11: 25: 08	62.2
50	2019/01/26 11: 25: 09	68.7
51	2019/01/26 11: 25: 10	68.8
52	2019/01/26 11: 25: 11	68.8
53	2019/01/26 11: 25: 12	59.9
54	2019/01/26 11: 25: 13	61.4
55	2019/01/26 11: 25: 14	59.1
56	2019/01/26 11: 25: 15	58.4
57	2019/01/26 11: 25: 16	60.9
58	2019/01/26 11: 25: 17	58.8
59	2019/01/26 11: 25: 18	60.9
60	2019/01/26 11: 25: 19	58.3
61	2019/01/26 11: 25: 20	62.9
62	2019/01/26 11: 25: 21	67.5
63	2019/01/26 11: 25: 22	62.9
64	2019/01/26 11: 25: 23	65.8
65	2019/01/26 11: 25: 24	63.5
66	2019/01/26 11: 25: 25	58.7
67	2019/01/26 11: 25: 26	58.6
68	2019/01/26 11: 25: 27	58.6
69	2019/01/26 11: 25: 28	57.7
70	2019/01/26 11: 25: 29	58.8
71	2019/01/26 11: 25: 30	62.4
72	2019/01/26 11: 25: 31	63.3
73	2019/01/26 11: 25: 32	59.8
74	2019/01/26 11: 25: 33	59.5
75	2019/01/26 11: 25: 34	59.6
76	2019/01/26 11: 25: 35	60.9
77	2019/01/26 11: 25: 36	61.9
78	2019/01/26 11: 25: 37	58.5
79	2019/01/26 11: 25: 38	60.3
80	2019/01/26 11: 25: 39	60.5
81	2019/01/26 11: 25: 40	62.3
82	2019/01/26 11: 25: 41	65.3
83	2019/01/26 11: 25: 42	69.8
84	2019/01/26 11: 25: 43	76.0
85	2019/01/26 11: 25: 44	83.0

86	2019/01/26	11: 25: 45	74. 7
87	2019/01/26	11: 25: 46	66. 4
88	2019/01/26	11: 25: 47	58. 1
89	2019/01/26	11: 25: 48	58. 7
90	2019/01/26	11: 25: 49	61. 1
91	2019/01/26	11: 25: 50	59. 2
92	2019/01/26	11: 25: 51	64. 0
93	2019/01/26	11: 25: 52	64. 7
94	2019/01/26	11: 25: 53	57. 9
95	2019/01/26	11: 25: 54	63. 7
96	2019/01/26	11: 25: 55	61. 7
97	2019/01/26	11: 25: 56	58. 5
98	2019/01/26	11: 25: 57	58. 8
99	2019/01/26	11: 25: 58	61. 3
100	2019/01/26	11: 25: 59	63. 2
101	2019/01/26	11: 26: 00	62. 6
102	2019/01/26	11: 26: 01	64. 5
103	2019/01/26	11: 26: 02	59. 7
104	2019/01/26	11: 26: 03	64. 5
105	2019/01/26	11: 26: 04	64. 0
106	2019/01/26	11: 26: 05	65. 0
107	2019/01/26	11: 26: 06	63. 4
108	2019/01/26	11: 26: 07	58. 8
109	2019/01/26	11: 26: 08	60. 4
110	2019/01/26	11: 26: 09	68. 1
111	2019/01/26	11: 26: 10	61. 8
112	2019/01/26	11: 26: 11	71. 8
113	2019/01/26	11: 26: 12	62. 3
114	2019/01/26	11: 26: 13	61. 7
115	2019/01/26	11: 26: 14	62. 1
116	2019/01/26	11: 26: 15	61. 1
117	2019/01/26	11: 26: 16	55. 6
118	2019/01/26	11: 26: 17	53. 7
119	2019/01/26	11: 26: 18	57. 6
120	2019/01/26	11: 26: 19	62. 1
121	2019/01/26	11: 26: 20	53. 2
122	2019/01/26	11: 26: 21	51. 9
123	2019/01/26	11: 26: 22	52. 6
124	2019/01/26	11: 26: 23	55. 1
125	2019/01/26	11: 26: 24	53. 2
126	2019/01/26	11: 26: 25	54. 8
127	2019/01/26	11: 26: 26	65. 7
128	2019/01/26	11: 26: 27	60. 3
129	2019/01/26	11: 26: 28	63. 7
130	2019/01/26	11: 26: 29	62. 0
131	2019/01/26	11: 26: 30	63. 9
132	2019/01/26	11: 26: 31	66. 8
133	2019/01/26	11: 26: 32	67. 0
134	2019/01/26	11: 26: 33	68. 0
135	2019/01/26	11: 26: 34	63. 9
136	2019/01/26	11: 26: 35	65. 2
137	2019/01/26	11: 26: 36	64. 2
138	2019/01/26	11: 26: 37	67. 9
139	2019/01/26	11: 26: 38	67. 8
140	2019/01/26	11: 26: 39	68. 2
141	2019/01/26	11: 26: 40	67. 2
142	2019/01/26	11: 26: 41	62. 9
143	2019/01/26	11: 26: 42	61. 0
144	2019/01/26	11: 26: 43	61. 5
145	2019/01/26	11: 26: 44	61. 4
146	2019/01/26	11: 26: 45	61. 9
147	2019/01/26	11: 26: 46	63. 3
148	2019/01/26	11: 26: 47	59. 2
149	2019/01/26	11: 26: 48	62. 9
150	2019/01/26	11: 26: 49	58. 0
151	2019/01/26	11: 26: 50	62. 7
152	2019/01/26	11: 26: 51	58. 6
153	2019/01/26	11: 26: 52	58. 5
154	2019/01/26	11: 26: 53	57. 4
155	2019/01/26	11: 26: 54	59. 7
156	2019/01/26	11: 26: 55	53. 0
157	2019/01/26	11: 26: 56	53. 2
158	2019/01/26	11: 26: 57	59. 2
159	2019/01/26	11: 26: 58	64. 9
160	2019/01/26	11: 26: 59	60. 1
161	2019/01/26	11: 27: 00	63. 8
162	2019/01/26	11: 27: 01	63. 3
163	2019/01/26	11: 27: 02	62. 7
164	2019/01/26	11: 27: 03	66. 0
165	2019/01/26	11: 27: 04	62. 8
166	2019/01/26	11: 27: 05	59. 1
167	2019/01/26	11: 27: 06	61. 0
168	2019/01/26	11: 27: 07	57. 9
169	2019/01/26	11: 27: 08	56. 1
170	2019/01/26	11: 27: 09	53. 9
171	2019/01/26	11: 27: 10	60. 9
172	2019/01/26	11: 27: 11	54. 0
173	2019/01/26	11: 27: 12	57. 2
174	2019/01/26	11: 27: 13	64. 0
175	2019/01/26	11: 27: 14	57. 6
176	2019/01/26	11: 27: 15	55. 3
177	2019/01/26	11: 27: 16	56. 4
178	2019/01/26	11: 27: 17	58. 2
179	2019/01/26	11: 27: 18	56. 1
180	2019/01/26	11: 27: 19	61. 2
181	2019/01/26	11: 27: 20	61. 5
182	2019/01/26	11: 27: 21	57. 1
183	2019/01/26	11: 27: 22	57. 5
184	2019/01/26	11: 27: 23	54. 6



185	2019/01/26	11:27:24	53.4
186	2019/01/26	11:27:25	54.8
187	2019/01/26	11:27:26	61.0
188	2019/01/26	11:27:27	65.3
189	2019/01/26	11:27:28	68.7
190	2019/01/26	11:27:29	72.0
191	2019/01/26	11:27:30	68.8
192	2019/01/26	11:27:31	65.8
193	2019/01/26	11:27:32	64.7
194	2019/01/26	11:27:33	63.7
195	2019/01/26	11:27:34	66.4
196	2019/01/26	11:27:35	62.4
197	2019/01/26	11:27:36	61.3
198	2019/01/26	11:27:37	62.3
199	2019/01/26	11:27:38	60.3
200	2019/01/26	11:27:39	57.8
201	2019/01/26	11:27:40	56.9
202	2019/01/26	11:27:41	58.4
203	2019/01/26	11:27:42	56.7
204	2019/01/26	11:27:43	56.1
205	2019/01/26	11:27:44	52.6
206	2019/01/26	11:27:45	62.7
207	2019/01/26	11:27:46	61.0
208	2019/01/26	11:27:47	56.4
209	2019/01/26	11:27:48	59.3
210	2019/01/26	11:27:49	58.8
211	2019/01/26	11:27:50	66.1
212	2019/01/26	11:27:51	69.6
213	2019/01/26	11:27:52	69.2
214	2019/01/26	11:27:53	69.0
215	2019/01/26	11:27:54	67.4
216	2019/01/26	11:27:55	62.0
217	2019/01/26	11:27:56	59.0
218	2019/01/26	11:27:57	58.7
219	2019/01/26	11:27:58	58.9
220	2019/01/26	11:27:59	58.6
221	2019/01/26	11:28:00	59.6
222	2019/01/26	11:28:01	60.5
223	2019/01/26	11:28:02	61.3
224	2019/01/26	11:28:03	59.2
225	2019/01/26	11:28:04	57.6
226	2019/01/26	11:28:05	65.7
227	2019/01/26	11:28:06	58.8
228	2019/01/26	11:28:07	57.0
229	2019/01/26	11:28:08	52.2
230	2019/01/26	11:28:09	53.5
231	2019/01/26	11:28:10	53.2
232	2019/01/26	11:28:11	54.1
233	2019/01/26	11:28:12	57.6
234	2019/01/26	11:28:13	57.5
235	2019/01/26	11:28:14	55.0
236	2019/01/26	11:28:15	54.6
237	2019/01/26	11:28:16	54.4
238	2019/01/26	11:28:17	56.1
239	2019/01/26	11:28:18	63.2
240	2019/01/26	11:28:19	56.5
241	2019/01/26	11:28:20	63.1
242	2019/01/26	11:28:21	67.3
243	2019/01/26	11:28:22	64.2
244	2019/01/26	11:28:23	63.4
245	2019/01/26	11:28:24	67.4
246	2019/01/26	11:28:25	64.6
247	2019/01/26	11:28:26	61.9
248	2019/01/26	11:28:27	59.5
249	2019/01/26	11:28:28	62.9
250	2019/01/26	11:28:29	62.4
251	2019/01/26	11:28:30	58.2
252	2019/01/26	11:28:31	63.0
253	2019/01/26	11:28:32	65.9
254	2019/01/26	11:28:33	67.4
255	2019/01/26	11:28:34	66.2
256	2019/01/26	11:28:35	66.0
257	2019/01/26	11:28:36	65.5
258	2019/01/26	11:28:37	66.5
259	2019/01/26	11:28:38	68.0
260	2019/01/26	11:28:39	67.0
261	2019/01/26	11:28:40	60.2
262	2019/01/26	11:28:41	61.1
263	2019/01/26	11:28:42	60.3
264	2019/01/26	11:28:43	57.7
265	2019/01/26	11:28:44	57.7
266	2019/01/26	11:28:45	56.3
267	2019/01/26	11:28:46	57.3
268	2019/01/26	11:28:47	66.2
269	2019/01/26	11:28:48	65.5
270	2019/01/26	11:28:49	67.0
271	2019/01/26	11:28:50	62.6
272	2019/01/26	11:28:51	63.0
273	2019/01/26	11:28:52	62.9
274	2019/01/26	11:28:53	60.7
275	2019/01/26	11:28:54	58.4
276	2019/01/26	11:28:55	55.4
277	2019/01/26	11:28:56	55.7
278	2019/01/26	11:28:57	56.4
279	2019/01/26	11:28:58	57.2
280	2019/01/26	11:28:59	60.2
281	2019/01/26	11:29:00	65.0
282	2019/01/26	11:29:01	68.7
283	2019/01/26	11:29:02	67.4

284	2019/01/26	11: 29: 03	67. 9
285	2019/01/26	11: 29: 04	65. 2
286	2019/01/26	11: 29: 05	59. 0
287	2019/01/26	11: 29: 06	60. 3
288	2019/01/26	11: 29: 07	58. 8
289	2019/01/26	11: 29: 08	55. 8
290	2019/01/26	11: 29: 09	55. 6
291	2019/01/26	11: 29: 10	55. 1
292	2019/01/26	11: 29: 11	55. 5
293	2019/01/26	11: 29: 12	58. 1
294	2019/01/26	11: 29: 13	58. 2
295	2019/01/26	11: 29: 14	56. 8
296	2019/01/26	11: 29: 15	53. 4
297	2019/01/26	11: 29: 16	52. 3
298	2019/01/26	11: 29: 17	51. 2
299	2019/01/26	11: 29: 18	56. 1
300	2019/01/26	11: 29: 19	56. 5

Freq Weight : A  
Time Weight : FAST  
Level Range : 40-100  
Max dB : 92.5 - 2019/01/26 11: 44: 57  
Level Range : 40-100  
SEL : 90.2  
Leq : 65.5

No. s	Date Time	(dB)
1	2019/01/26 11: 44: 37	59.8
2	2019/01/26 11: 44: 38	59.2
3	2019/01/26 11: 44: 39	55.4
4	2019/01/26 11: 44: 40	60.1
5	2019/01/26 11: 44: 41	63.9
6	2019/01/26 11: 44: 42	62.9
7	2019/01/26 11: 44: 43	62.0
8	2019/01/26 11: 44: 44	62.3
9	2019/01/26 11: 44: 45	61.7
10	2019/01/26 11: 44: 46	57.8
11	2019/01/26 11: 44: 47	57.3
12	2019/01/26 11: 44: 48	62.0
13	2019/01/26 11: 44: 49	65.2
14	2019/01/26 11: 44: 50	61.4
15	2019/01/26 11: 44: 51	63.8
16	2019/01/26 11: 44: 52	66.9
17	2019/01/26 11: 44: 53	68.6
18	2019/01/26 11: 44: 54	66.1
19	2019/01/26 11: 44: 55	64.5
20	2019/01/26 11: 44: 56	59.7
21	2019/01/26 11: 44: 57	79.8
22	2019/01/26 11: 44: 58	58.6
23	2019/01/26 11: 44: 59	56.3
24	2019/01/26 11: 45: 00	56.6
25	2019/01/26 11: 45: 01	54.3
26	2019/01/26 11: 45: 02	55.4
27	2019/01/26 11: 45: 03	70.0
28	2019/01/26 11: 45: 04	79.4
29	2019/01/26 11: 45: 05	60.4
30	2019/01/26 11: 45: 06	55.6
31	2019/01/26 11: 45: 07	71.9
32	2019/01/26 11: 45: 08	62.4
33	2019/01/26 11: 45: 09	62.1
34	2019/01/26 11: 45: 10	59.2
35	2019/01/26 11: 45: 11	66.2
36	2019/01/26 11: 45: 12	61.9
37	2019/01/26 11: 45: 13	58.9
38	2019/01/26 11: 45: 14	56.3
39	2019/01/26 11: 45: 15	55.4
40	2019/01/26 11: 45: 16	57.1
41	2019/01/26 11: 45: 17	58.6
42	2019/01/26 11: 45: 18	70.5
43	2019/01/26 11: 45: 19	69.4
44	2019/01/26 11: 45: 20	66.6
45	2019/01/26 11: 45: 21	63.2
46	2019/01/26 11: 45: 22	66.4
47	2019/01/26 11: 45: 23	63.8
48	2019/01/26 11: 45: 24	58.1
49	2019/01/26 11: 45: 25	57.8
50	2019/01/26 11: 45: 26	61.7
51	2019/01/26 11: 45: 27	59.8
52	2019/01/26 11: 45: 28	58.4
53	2019/01/26 11: 45: 29	60.0
54	2019/01/26 11: 45: 30	56.6
55	2019/01/26 11: 45: 31	61.9
56	2019/01/26 11: 45: 32	62.7
57	2019/01/26 11: 45: 33	61.2
58	2019/01/26 11: 45: 34	54.5
59	2019/01/26 11: 45: 35	58.4
60	2019/01/26 11: 45: 36	66.4
61	2019/01/26 11: 45: 37	59.7
62	2019/01/26 11: 45: 38	58.7
63	2019/01/26 11: 45: 39	57.1
64	2019/01/26 11: 45: 40	57.4
65	2019/01/26 11: 45: 41	54.4
66	2019/01/26 11: 45: 42	56.7
67	2019/01/26 11: 45: 43	56.3
68	2019/01/26 11: 45: 44	65.3
69	2019/01/26 11: 45: 45	62.1
70	2019/01/26 11: 45: 46	64.0
71	2019/01/26 11: 45: 47	61.5
72	2019/01/26 11: 45: 48	60.8
73	2019/01/26 11: 45: 49	59.5
74	2019/01/26 11: 45: 50	61.2
75	2019/01/26 11: 45: 51	60.7
76	2019/01/26 11: 45: 52	64.0
77	2019/01/26 11: 45: 53	63.5
78	2019/01/26 11: 45: 54	68.2
79	2019/01/26 11: 45: 55	68.9
80	2019/01/26 11: 45: 56	62.5
81	2019/01/26 11: 45: 57	55.2
82	2019/01/26 11: 45: 58	56.9
83	2019/01/26 11: 45: 59	57.7
84	2019/01/26 11: 46: 00	61.0
85	2019/01/26 11: 46: 01	66.6

86	2019/01/26	11: 46: 02	66. 0
87	2019/01/26	11: 46: 03	71. 2
88	2019/01/26	11: 46: 04	70. 4
89	2019/01/26	11: 46: 05	68. 6
90	2019/01/26	11: 46: 06	64. 6
91	2019/01/26	11: 46: 07	65. 2
92	2019/01/26	11: 46: 08	68. 7
93	2019/01/26	11: 46: 09	66. 4
94	2019/01/26	11: 46: 10	65. 3
95	2019/01/26	11: 46: 11	65. 2
96	2019/01/26	11: 46: 12	66. 1
97	2019/01/26	11: 46: 13	66. 1
98	2019/01/26	11: 46: 14	61. 8
99	2019/01/26	11: 46: 15	60. 0
100	2019/01/26	11: 46: 16	62. 9
101	2019/01/26	11: 46: 17	60. 6
102	2019/01/26	11: 46: 18	60. 2
103	2019/01/26	11: 46: 19	59. 8
104	2019/01/26	11: 46: 20	61. 2
105	2019/01/26	11: 46: 21	67. 5
106	2019/01/26	11: 46: 22	59. 6
107	2019/01/26	11: 46: 23	60. 9
108	2019/01/26	11: 46: 24	61. 6
109	2019/01/26	11: 46: 25	63. 4
110	2019/01/26	11: 46: 26	53. 4
111	2019/01/26	11: 46: 27	64. 7
112	2019/01/26	11: 46: 28	63. 8
113	2019/01/26	11: 46: 29	55. 5
114	2019/01/26	11: 46: 30	72. 8
115	2019/01/26	11: 46: 31	63. 4
116	2019/01/26	11: 46: 32	57. 1
117	2019/01/26	11: 46: 33	60. 8
118	2019/01/26	11: 46: 34	49. 0
119	2019/01/26	11: 46: 35	56. 9
120	2019/01/26	11: 46: 36	56. 0
121	2019/01/26	11: 46: 37	56. 6
122	2019/01/26	11: 46: 38	53. 0
123	2019/01/26	11: 46: 39	55. 1
124	2019/01/26	11: 46: 40	59. 7
125	2019/01/26	11: 46: 41	60. 6
126	2019/01/26	11: 46: 42	61. 2
127	2019/01/26	11: 46: 43	56. 5
128	2019/01/26	11: 46: 44	61. 1
129	2019/01/26	11: 46: 45	61. 5
130	2019/01/26	11: 46: 46	55. 5
131	2019/01/26	11: 46: 47	60. 3
132	2019/01/26	11: 46: 48	62. 6
133	2019/01/26	11: 46: 49	68. 3
134	2019/01/26	11: 46: 50	61. 4
135	2019/01/26	11: 46: 51	59. 1
136	2019/01/26	11: 46: 52	66. 4
137	2019/01/26	11: 46: 53	65. 3
138	2019/01/26	11: 46: 54	60. 4
139	2019/01/26	11: 46: 55	64. 1
140	2019/01/26	11: 46: 56	57. 4
141	2019/01/26	11: 46: 57	64. 2
142	2019/01/26	11: 46: 58	62. 5
143	2019/01/26	11: 46: 59	67. 2
144	2019/01/26	11: 47: 00	61. 2
145	2019/01/26	11: 47: 01	62. 1
146	2019/01/26	11: 47: 02	61. 0
147	2019/01/26	11: 47: 03	59. 5
148	2019/01/26	11: 47: 04	57. 1
149	2019/01/26	11: 47: 05	59. 3
150	2019/01/26	11: 47: 06	55. 6
151	2019/01/26	11: 47: 07	59. 3
152	2019/01/26	11: 47: 08	54. 9
153	2019/01/26	11: 47: 09	58. 5
154	2019/01/26	11: 47: 10	56. 5
155	2019/01/26	11: 47: 11	57. 3
156	2019/01/26	11: 47: 12	63. 2
157	2019/01/26	11: 47: 13	56. 0
158	2019/01/26	11: 47: 14	60. 1
159	2019/01/26	11: 47: 15	57. 5
160	2019/01/26	11: 47: 16	60. 0
161	2019/01/26	11: 47: 17	55. 9
162	2019/01/26	11: 47: 18	52. 9
163	2019/01/26	11: 47: 19	63. 2
164	2019/01/26	11: 47: 20	61. 7
165	2019/01/26	11: 47: 21	57. 9
166	2019/01/26	11: 47: 22	56. 6
167	2019/01/26	11: 47: 23	59. 1
168	2019/01/26	11: 47: 24	59. 5
169	2019/01/26	11: 47: 25	56. 4
170	2019/01/26	11: 47: 26	53. 9
171	2019/01/26	11: 47: 27	51. 8
172	2019/01/26	11: 47: 28	50. 2
173	2019/01/26	11: 47: 29	49. 5
174	2019/01/26	11: 47: 30	58. 4
175	2019/01/26	11: 47: 31	52. 6
176	2019/01/26	11: 47: 32	50. 2
177	2019/01/26	11: 47: 33	51. 6
178	2019/01/26	11: 47: 34	50. 5
179	2019/01/26	11: 47: 35	50. 5
180	2019/01/26	11: 47: 36	53. 6
181	2019/01/26	11: 47: 37	66. 0
182	2019/01/26	11: 47: 38	62. 6
183	2019/01/26	11: 47: 39	57. 1
184	2019/01/26	11: 47: 40	56. 4

185	2019/01/26	11: 47: 41	58. 1
186	2019/01/26	11: 47: 42	53. 0
187	2019/01/26	11: 47: 43	54. 1
188	2019/01/26	11: 47: 44	54. 8
189	2019/01/26	11: 47: 45	53. 7
190	2019/01/26	11: 47: 46	51. 9
191	2019/01/26	11: 47: 47	54. 0
192	2019/01/26	11: 47: 48	56. 3
193	2019/01/26	11: 47: 49	53. 2
194	2019/01/26	11: 47: 50	52. 4
195	2019/01/26	11: 47: 51	52. 6
196	2019/01/26	11: 47: 52	54. 1
197	2019/01/26	11: 47: 53	48. 9
198	2019/01/26	11: 47: 54	49. 0
199	2019/01/26	11: 47: 55	50. 9
200	2019/01/26	11: 47: 56	52. 5
201	2019/01/26	11: 47: 57	52. 4
202	2019/01/26	11: 47: 58	62. 6
203	2019/01/26	11: 47: 59	58. 6
204	2019/01/26	11: 48: 00	63. 8
205	2019/01/26	11: 48: 01	63. 7
206	2019/01/26	11: 48: 02	64. 9
207	2019/01/26	11: 48: 03	63. 5
208	2019/01/26	11: 48: 04	63. 0
209	2019/01/26	11: 48: 05	63. 7
210	2019/01/26	11: 48: 06	61. 3
211	2019/01/26	11: 48: 07	54. 6
212	2019/01/26	11: 48: 08	54. 5
213	2019/01/26	11: 48: 09	56. 9
214	2019/01/26	11: 48: 10	55. 0
215	2019/01/26	11: 48: 11	53. 4
216	2019/01/26	11: 48: 12	54. 2
217	2019/01/26	11: 48: 13	54. 1
218	2019/01/26	11: 48: 14	55. 9
219	2019/01/26	11: 48: 15	53. 7
220	2019/01/26	11: 48: 16	63. 2
221	2019/01/26	11: 48: 17	64. 7
222	2019/01/26	11: 48: 18	65. 1
223	2019/01/26	11: 48: 19	62. 2
224	2019/01/26	11: 48: 20	59. 3
225	2019/01/26	11: 48: 21	64. 0
226	2019/01/26	11: 48: 22	64. 3
227	2019/01/26	11: 48: 23	68. 3
228	2019/01/26	11: 48: 24	63. 6
229	2019/01/26	11: 48: 25	61. 6
230	2019/01/26	11: 48: 26	63. 2
231	2019/01/26	11: 48: 27	62. 2
232	2019/01/26	11: 48: 28	66. 1
233	2019/01/26	11: 48: 29	62. 0
234	2019/01/26	11: 48: 30	55. 4
235	2019/01/26	11: 48: 31	57. 4
236	2019/01/26	11: 48: 32	54. 4
237	2019/01/26	11: 48: 33	61. 3
238	2019/01/26	11: 48: 34	57. 4
239	2019/01/26	11: 48: 35	62. 1
240	2019/01/26	11: 48: 36	63. 7
241	2019/01/26	11: 48: 37	64. 1
242	2019/01/26	11: 48: 38	62. 1
243	2019/01/26	11: 48: 39	56. 9
244	2019/01/26	11: 48: 40	58. 9
245	2019/01/26	11: 48: 41	61. 3
246	2019/01/26	11: 48: 42	59. 7
247	2019/01/26	11: 48: 43	62. 3
248	2019/01/26	11: 48: 44	56. 2
249	2019/01/26	11: 48: 45	57. 1
250	2019/01/26	11: 48: 46	50. 8
251	2019/01/26	11: 48: 47	58. 7
252	2019/01/26	11: 48: 48	59. 9
253	2019/01/26	11: 48: 49	55. 5
254	2019/01/26	11: 48: 50	56. 5
255	2019/01/26	11: 48: 51	59. 7
256	2019/01/26	11: 48: 52	56. 2
257	2019/01/26	11: 48: 53	56. 5
258	2019/01/26	11: 48: 54	53. 4
259	2019/01/26	11: 48: 55	58. 7
260	2019/01/26	11: 48: 56	60. 4
261	2019/01/26	11: 48: 57	58. 7
262	2019/01/26	11: 48: 58	67. 8
263	2019/01/26	11: 48: 59	65. 0
264	2019/01/26	11: 49: 00	63. 3
265	2019/01/26	11: 49: 01	65. 9
266	2019/01/26	11: 49: 02	64. 6
267	2019/01/26	11: 49: 03	64. 3
268	2019/01/26	11: 49: 04	68. 9
269	2019/01/26	11: 49: 05	71. 5
270	2019/01/26	11: 49: 06	69. 4
271	2019/01/26	11: 49: 07	64. 1
272	2019/01/26	11: 49: 08	57. 4
273	2019/01/26	11: 49: 09	53. 6
274	2019/01/26	11: 49: 10	56. 5
275	2019/01/26	11: 49: 11	57. 2
276	2019/01/26	11: 49: 12	57. 7
277	2019/01/26	11: 49: 13	56. 6
278	2019/01/26	11: 49: 14	60. 3
279	2019/01/26	11: 49: 15	62. 5
280	2019/01/26	11: 49: 16	62. 7
281	2019/01/26	11: 49: 17	58. 7
282	2019/01/26	11: 49: 18	61. 3
283	2019/01/26	11: 49: 19	62. 1

284	2019/01/26	11: 49: 20	67. 0
285	2019/01/26	11: 49: 21	71. 6
286	2019/01/26	11: 49: 22	72. 7
287	2019/01/26	11: 49: 23	68. 2
288	2019/01/26	11: 49: 24	58. 5
289	2019/01/26	11: 49: 25	57. 6
290	2019/01/26	11: 49: 26	56. 6
291	2019/01/26	11: 49: 27	58. 2
292	2019/01/26	11: 49: 28	52. 1
293	2019/01/26	11: 49: 29	52. 6
294	2019/01/26	11: 49: 30	53. 1
295	2019/01/26	11: 49: 31	50. 5
296	2019/01/26	11: 49: 32	62. 4
297	2019/01/26	11: 49: 33	53. 9
298	2019/01/26	11: 49: 34	61. 6
299	2019/01/26	11: 49: 35	64. 9
300	2019/01/26	11: 49: 36	64. 1