

## Appendix A: NOP and Scoping Comments

*This Page Intentionally Left Blank*



## Notice of Preparation and Notice of Public Scoping Meeting Dublin Boulevard-North Canyons Parkway Extension Project

**Date:** Thursday, May 18, 2017

**To:** Public Agencies and Interested Parties

**From:** Obaid Khan, Transportation & Operations Manager, City of Dublin

**Subject:** Notice of Preparation of an Environmental Impact Report and Notice of Public Scoping Meeting for the Dublin Boulevard-North Canyons Parkway Extension Project

The City of Dublin is the Lead Agency and will prepare an Environmental Impact Report (EIR) for the project identified herein. The project description, location, and probable environmental effects of the Dublin Boulevard-North Canyons Parkway Extension Project are described in the attached materials.

Per CEQA Guidelines Section 15082, the City of Dublin is soliciting comments from public agencies, organizations, and members of the public regarding the scope and content of the EIR, and the environmental issues and alternatives to be addressed in the EIR. Public agencies may need to use the EIR when considering permitting or other approvals that are germane to the agencies' responsibilities in connection with the projects.

Public scoping comments must be submitted no later than **Monday June 19, 2017**. Accordingly, please provide your written response to either the email or the address shown below by **5:00 p.m., Monday, June 19, 2017**. If you wish to be placed on the notification list for this project, or if you have any questions or need additional information, please contact:

City of Dublin  
100 Civic Plaza  
Dublin, CA, 94568  
Attn: Marissa Clevenger, Office Assistant II  
Phone: 925-833-6630; Fax: (925) 829-9248; email: [marissa.clevenger@dublin.ca.gov](mailto:marissa.clevenger@dublin.ca.gov)

### Public Scoping Meeting

A public scoping meeting will be held at **6:00 p.m. on Wednesday, May 31, 2017**, at Dublin City Hall, Regional Meeting Room, 100 Civic Plaza, Dublin, CA 94568. At this meeting, public agencies, organizations, and members of the public will be able to review the proposed project and provide comments on the scope of the environmental review process. A comment station will be available at the meeting to collect written comments and feedback on the scope of the EIR.

### Project Location

The study area is located within the cities of Dublin, Livermore, and unincorporated portions of Alameda County. While the proposed alignment is conceptual, the general study area is located north of US Interstate 580 (I-580), between the existing Dublin Boulevard to the west and North Canyons Parkway to the east (**Figure 1**), within the Livermore U.S. Geological Survey (USGS) 7.5-minute quadrangle (Township 3 South, Range 1 East; 37° 42' 14.18 N, 121° 50' 15.55 W; Mt. Diablo Meridian) in Alameda County.

## Existing Conditions

### Land Use Activities

The study area is predominantly characterized by undeveloped grazed ranchland in eastern Alameda County, with several rural residential developments within the vicinity of the study area. The surrounding lands north of I-580 include residential, industrial, commercial, and agricultural parcels. The surrounding lands south of I-580 are primarily developed with commercial and industrial land uses.

### Land Use Designations

Previous environmental documents, such as the Eastern Dublin EIR (2002) and the Fallon Village Supplemental EIR (2005), considered and cleared future development within the immediate vicinity of the study area, within the City of Dublin. The Dublin Boulevard – North Canyons Parkway extension project was considered in these documents. According to the City of Dublin General Plan (2015), the land use designations within the general area include general commercial, campus office, and industrial park, residential, and open space. The portion of the study area within Alameda County is within the East County Area Plan (ECAP) and is designated as Resource Management land. The portion of the study area within Alameda County is also considered to be within the City of Dublin's sphere of influence and subject to the Dublin Open Space Initiative of 2014. The purpose of the initiative is to maintain natural resource land use designations and prevent development beyond the urban limit line. However, the initiative continues to allow provisions for an arterial roadway between Dublin Boulevard and North Canyons Parkway. The eastern portion of the study area is within the boundaries of the City of Livermore. According to the City of Livermore General Plan (2014), land uses near the study area are designated as Business, Commercial Park, and Resource Management. **Figure 2** depicts existing land use designations within the study area.

### Project Description

The City of Dublin, in coordination with the City of Livermore and Alameda County, proposes to extend Dublin Boulevard to North Canyons Parkway. The project is considered in their respective planning documents, as well as identified in *Plan Bay Area* and *Alameda Countywide Transportation Plan* (Regional Transportation Plan ID# 21473). The project would:

- Establish a precise alignment for a roadway extension that would connect several Association of Bay Area Government's (ABAG) Priority Development Areas (PDA) within Dublin and Livermore (**Figure 3**)
- Analyze the footprint and recommend the number of travel lanes for the roadway to accommodate the long-range planning efforts identified in the Dublin, Livermore, and Alameda County General Plans, and the Plan Bay Area
- Improve mobility, multimodal access, connectivity, safety, and efficiency for all users
- As a byproduct, relieve vehicular congestion in the region

The project is proposed to complete the roadway connection along the north side of I-580 to facilitate the needs of the growing jobs and housing associated with ABAG Priority Development Areas (PDA) in the project vicinity.

Dublin Boulevard is a major arterial facility connecting Dublin's downtown area to the west and partially developed sections to the east. Dublin Boulevard provides direct connectivity to Camp Parks Army Base, regional Iron Horse Trail, and various residential/office/commercial land uses. Within approximately 0.5-mile of the Dublin Boulevard corridor, there are approximately 8,000 existing housing units and

approximately 1,000 approved housing units. North Canyons Parkway is a four-lane arterial facility in Livermore that provides access to commercial, industrial, residential development, and educational facilities. There are nearly 800 existing and approximately 500 approved multi-family units located adjacent to North Canyons Parkway. Additionally, two schools are accessed directly from North Canyons Parkway, including Las Positas Community College and Livermore Valley Charter Kindergarten-8<sup>th</sup> grade (K-8).

### **Potential Environmental Effects**

Because the Lead Agency has determined that an EIR will be required, no Initial Study has been prepared for the proposed project. The EIR will identify significant and potentially significant environmental effects anticipated to result from development of the project. Other environmental topics (i.e., agriculture, mineral resources, etc.) will be evaluated at a lesser level of detail.

Each of the following environmental topic areas in the EIR will include a discussion of the existing conditions for each environmental issue and identify short-term and long-term environmental impacts associated with the project, and their levels of significance. Mitigation measures will be identified to reduce any potentially significant or significant impacts. The level of analysis for these subject areas may be refined or additional subject areas may be analyzed based on responses to this NOP and/or any refinements to the proposed project that may occur subsequent to the publication of this NOP.

Potential environmental effects and the analysis methodology for each of the following topic areas are described below:

- Aesthetics
- Air Quality/ Greenhouse Gas/Energy
- Biological Resources
- Cultural Resources
- Geology and Soils
- Hazards and Hazardous Materials
- Hydrology and Water Quality
- Land Use and Planning
- Noise and Vibration
- Population and Housing
- Public Services
- Transportation and Traffic
- Utilities and Service Systems

### **Aesthetics**

The study area is undeveloped and used predominantly for grazing land, but is located adjacent to developed areas and is north of I-580. Implementation of the project would construct an approximately 1.5-mile roadway within a relatively undeveloped area potentially resulting in a change to the character and visual quality of the study area. The aesthetics section of the draft EIR will identify the visual characteristics of the study area and surrounding area. The section will describe the existing aesthetics and visual resources, including a discussion of views within the study area and views from surrounding areas. The draft EIR will discuss potential construction and operational visual impacts that may result from the project. Mitigation measures will be provided where necessary to reduce impacts associated with the project.

### **Air Quality/Greenhouse Gas/Energy**

The study area is located within the jurisdiction of the Bay Area Air Quality Management District (BAAQMD). Air quality modeling will be performed in accordance with BAAQMD standards. The project could change traffic patterns leading to a change in air pollutant emissions, primarily those that have an

effect on regional air quality. Additionally, an assessment of changed carbon monoxide concentrations will be conducted to evaluate local air quality. Impacts from construction period and toxic air contaminants (TACs) as it relates to sensitive receptors will be evaluated as well. Greenhouse gas (GHG) emissions will be modeled and compared to the BAAQMD standards. The analysis will include an assessment of travel-related emissions. In accordance with Appendix F of the CEQA Guidelines, projected electricity and natural gas usage during construction and operation will be analyzed.

Overall, the air quality/GHG/energy sections of the draft EIR will discuss the air quality setting (including climate and topography), environmental health effects of criteria pollutants, existing air quality in the project vicinity, the regulatory setting, and potential short-term and long-term air quality impacts. Mitigation measures will be provided where necessary to reduce impacts associated with the project.

### **Biological Resources**

Large portions of the study area are currently undeveloped open space lands, which have the potential to host plants and animals that could be impacted by the project. A Biological Resources Assessment Report will be prepared to evaluate potential significant impacts within the study area and provide recommended mitigation measures as appropriate. The biological resources section of the draft EIR will identify the existing biological resources and potential for the site to support special-status plant and animal species. A wildlife ecologist and a botanist/wetlands ecologist will conduct reconnaissance-level field surveys of the project area to document the biological conditions. This information will be gathered for the purpose of characterizing the botanical resources and wildlife habitat values of the project site and surrounding vicinity.

### **Cultural Resources**

Based on a literature search and existing documentation within the study area, sensitive archaeological resources could possibly be encountered during project construction. A Cultural Resources Assessment Report will be prepared to evaluate potential significant impacts to sensitive resources within the study area and provide recommended mitigation measures as appropriate.

Consultation will be conducted with existing databases of cultural resources, specifically the California Historical Resources Information System (CHRIS), and the Northwest Information Center (NWIC) at Sonoma State University, to identify known cultural resource sites and previous surveys in the project area. The Native American Heritage Commission (NAHC) will also be contacted and consulted with about potential traditional lands or cultural places within the City's jurisdiction.

### **Geology and Soils**

The study area is located within a seismically active region of California and could be subject to various geological hazards. The Geology and Soils section of the draft EIR will discuss the possible geological impacts and future risks associated with exposure to seismic activity and the existing soil conditions within the study area. Mitigation measures will be identified for significant impacts, as warranted.

### **Hazards and Hazardous Materials**

The hazards and hazardous materials section will summarize known hazardous materials conditions on and adjacent to the study area. This section will address potential impacts associated with the transport of hazardous materials, and other potentially hazardous conditions from project construction and operation. The draft EIR will identify whether or not the proposed project would emit hazardous materials and/or interfere with any emergency response plans. Mitigation measures will be identified for significant impacts, as warranted.

### **Hydrology and Water Quality**

Cottonwood Creek bisects the eastern portion of the project area in a southwesterly direction, and seasonal wetlands are present in the project area. The hydrology and water quality section of the draft EIR will document existing conditions within the study area, and determine potential water quality impacts and flooding. The section will also address short-term construction-related effects on hydrology and water quality, and potential long-term project-related water quality changes to stormwater drainage and/or flooding. Mitigation measures will address any potentially significant impacts to surface water and groundwater quality and hydrology resulting from the project.

### **Land Use Planning**

The study area is mostly undeveloped and currently used predominantly for grazing land, but is located adjacent to developed areas and is north of I-580. Part of the study area is planned for future development under local planning documents. Part of the study area also is within the Airport Protection Area and as such must comply with its policies and laws. The draft EIR will describe the existing land uses and land use designations adjacent to and within the study area. Land use impacts that would occur as a result of the project will be analyzed, including consistency of the project with local planning documents. Measures will be identified for significant impacts, as warranted.

### **Noise and Vibration**

It is anticipated that existing noise levels in the vicinity of the project alignment are dominated by traffic traveling along I-580. Potential noise impacts will be analyzed through a Noise Monitoring Survey and Traffic Noise Modeling. Future traffic noise levels will be predicted taking into account future traffic volumes, lane configurations, and speeds along both I-580 and the proposed roadway extension. Measures to reduce noise levels would be recommended where significant noise impacts resulting from the project are identified. A technical noise and vibration report will be prepared which addresses noise and vibration impacts.

### **Population and Housing**

The draft EIR will describe existing housing, population, and employment conditions using the local planning documents, US Census, and ABAG statistics to the extent feasible. The study area is undeveloped and used predominantly for grazing land, and project does not propose any development. However, the draft EIR will consider potential indirect growth as a result of the project. The Eastern Dublin EIR (2002) and the Fallon Village Supplemental EIR (2005), considered and cleared future development and growth within the general vicinity of the study area.

### **Public Services and Recreation**

The draft EIR will draw upon the local planning documents and other available existing information to describe existing public services that serve the study area. An evaluation of the potential for the project to impact public services will be provided. Measures will be identified for significant impacts, as warranted.

### **Transportation and Traffic**

A traffic study will be conducted for the project. The draft EIR will use the traffic study and information to describe existing conditions and evaluate potential impacts of the project. The study will consider the existing and proposed roadway system, existing and proposed bikeway network, transit systems (bus and commuter rail), and pedestrians. Corridor levels of service shall be determined for regional/arterial streets. Measures will be identified for significant impacts, as warranted.

### **Utilities and Service Systems**

The study area is undeveloped and used predominantly for grazing land, and project does not propose any development. Although unlikely to increase demand in municipal services, the draft EIR will consider any potential increase in demand and evaluate the impacts of the project on public services, including utilities such as storm drains, water supply, and solid waste management. Mitigation measures will be identified for significant impacts, as warranted.

### **Cumulative Impacts**

Consistent with CEQA Guidelines, the draft EIR will discuss cumulative impacts of the proposed project, addressing each topic covered in the environmental analysis.

### **Other CEQA Considerations**

#### **Effects Not Found to be Significant**

This section will discuss those environmental issues found not to have an impact as a result of the proposed project.

#### **Significant and Unavoidable Environmental Effects**

This section of the draft EIR will describe any significant and unavoidable impacts on the environment that cannot be avoided or reduced to a less than significant level with the application of mitigation measures.

#### **Significant Irreversible Environmental Changes Which Would be Caused by the Project Should it be Implemented**

This section will summarize the major changes to the environment that would result with implementation of the proposed project. It will focus on the physical environmental changes in the project setting such as those caused by grading and paving, the level of commitments to use of non-renewable resources represented by the project, and potential for secondary impacts that may place additional burdens on non-renewable resources.

#### **Growth Inducing Effects**

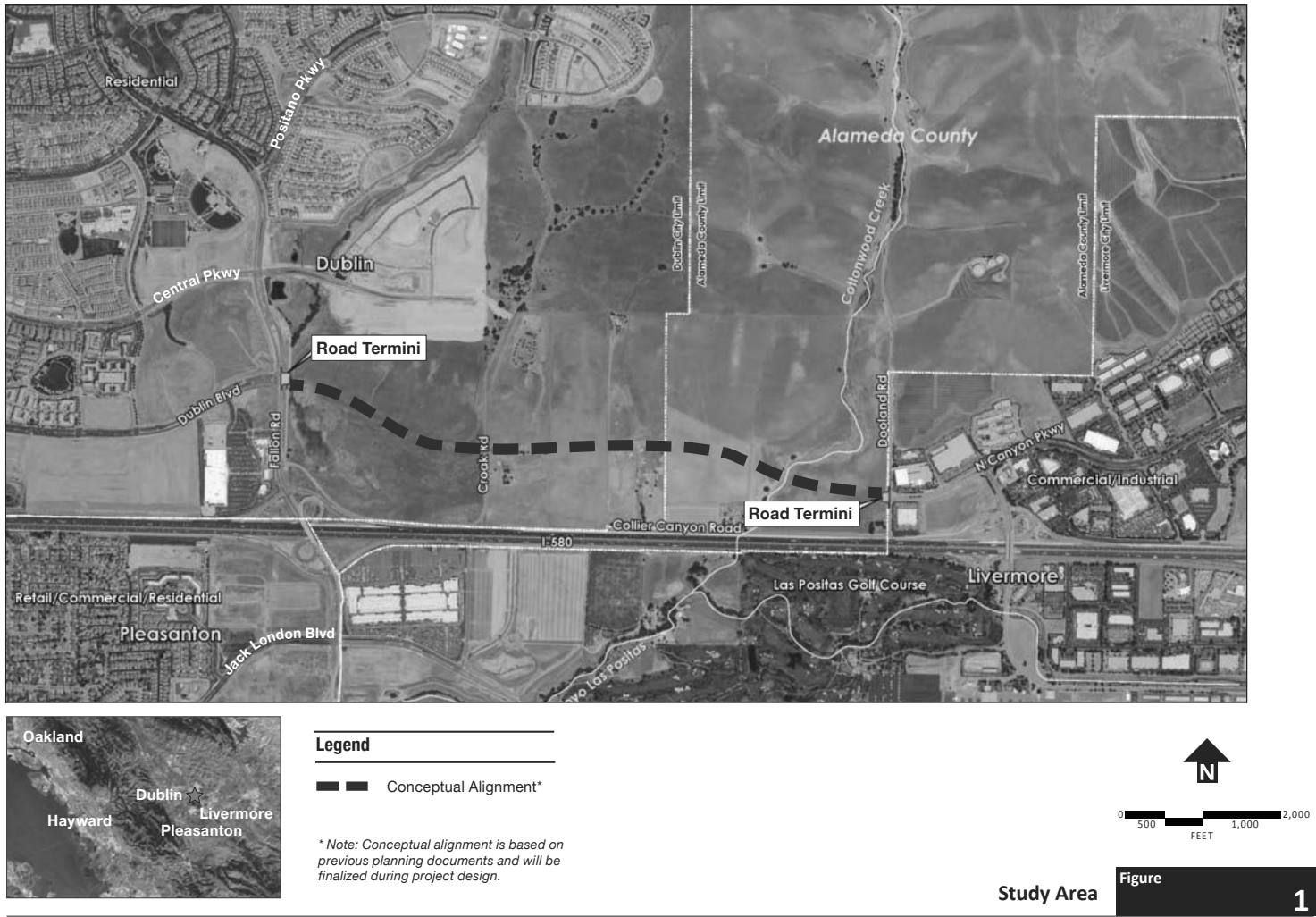
As a required discussion according to CEQA Section 15126.2(d), the draft EIR will include a discussion of growth inducing effects. The planned growth in the project area will be identified. The section will evaluate the potential for the project to generate additional growth in the area using standard growth analysis criteria, such as the project's potential to foster economic or population growth or its potential to remove obstacles to population growth through extension of infrastructure.

#### **Project Alternatives**

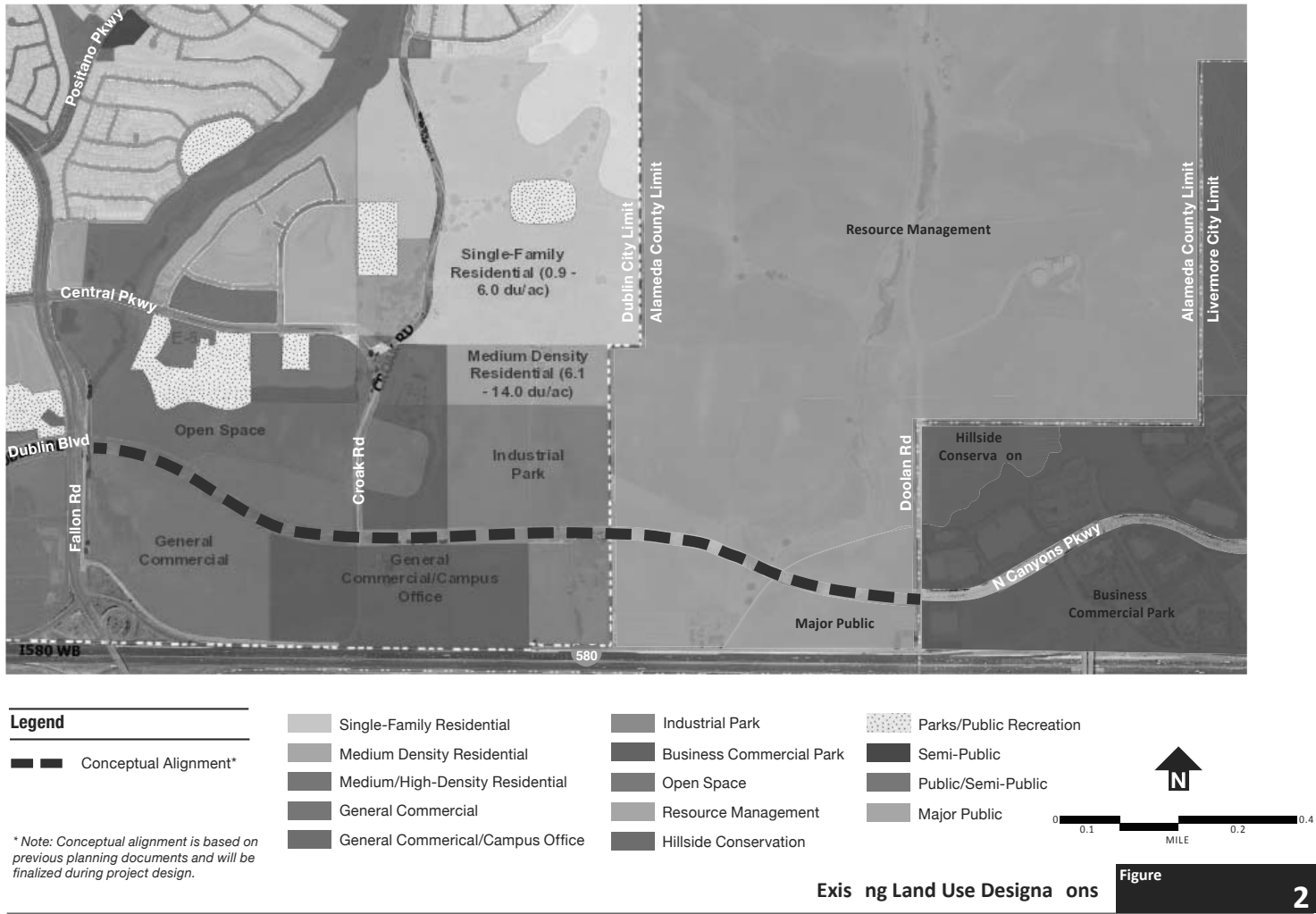
Under CEQA, environmental documentation must include an analysis of a reasonable range of alternatives to the project. The alternatives will be evaluated in less detail than the proposed project, within the same environmental topic areas listed above. Each alternative will be contrasted with the project in terms of the extent to which project objectives and reduction in adverse impacts are achieved. The environmentally superior alternative will be identified.



Dublin Boulevard – North Canyons Parkway Extension Project



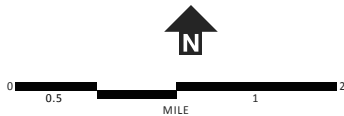
Source: Circlepoint, 2017





Legend

★ Study Area



Nearby Priority Development Areas

Source: Association of Bay Area Governments, 2017

This Page Intentionally Left Blank

## Public Comments Received in Response to the Notice of Preperation

## Letter 1

**From:** [joseph\\_ledbetter](#)  
**To:** [Marissa\\_Clevenger](#)  
**Cc:**  
**Subject:** North Canyon to Dublin Blvd connector  
**Date:** Monday, May 22, 2017 10:21:43 PM

---

As a bicycle commuter from Livermore to Bart, I am excited about this connection which would shorten my route and make my commute safer. You may want to consider staging the connection by first creating a bike path and later paving for auto convenience. In any event, pedestrians and bikes should be allowed along this route once easement is acquired and the current blocking fences have been removed. Unfortunately, autos will likely use the route when 580 is crowded. You may want to install frequent speed bumps and consider other road calming measures to keep speeds down. Lower speeds will decrease wildlife road kills as well. The alternative measures of underground tunnels for wildlife crossing do not work well if road speeds exceed 25 mph.

Thanks for your consideration

[REDACTED]

Sent from my iPad

**From:** [Peta Grimes](#)  
**To:** [Marissa Clevenger](#)  
**Subject:** Dublin Blvd Extension  
**Date:** Monday, May 22, 2017 5:15:53 PM

---

Great idea. I have always been worried that in the event of a major catastrophe in Livermore, there were only 580 and Vasco road as exit routes. Now we have a thru road to Pleasanton on the south side of 580 and adding another on the North side will improve accessibility even more.

**From:** [Andrew Haupt](#)  
**To:** [Marissa Clevenger](#)  
**Subject:** comment on connection between Dublin Boulevard and North Canyons Parkway  
**Date:** Tuesday, May 23, 2017 8:13:37 AM

---

Hello there, thanks for your article on nextdoor telling us about this potential connection. I wanted to give you my input on the idea, which is that I am excited for it, but I want limitations in place to keep Dublin's development at bay. The city of Dublin has shown a track record of developing too fast and with little regard to good zoning, or care for their residents (Like when they closed Tassajara road for most of a year!) So I do not trust them to keep our border nice. If we could at least promise to keep a bit of space between us and them on that side after building the road for twenty years or so, I think that would be ideal. Thank you for asking for our input!

Sent from [Mail](#) for Windows 10



**From:** [Srecko Bartl](#)  
**To:** [Marissa Clevenger](#)  
**Subject:** Connection between Dublin Boulevard and North Canyons Parkway on the north side of I-580  
**Date:** Tuesday, May 23, 2017 2:17:13 PM

---

Great idea! The more routes we have between Dublin/Pleasanton and Livermore, the lesser the congestion will be on each of them.

Steve Bartl,  
Livermore

**From:** [Juan Pablo Galvan](#)  
**To:** [Marissa Clevenger](#)  
**Subject:** public notice - Dublin Blvd extension  
**Date:** Wednesday, May 24, 2017 3:05:06 PM  
**Attachments:** [image001.jpg](#)  
[image002.jpg](#)  
[image003.png](#)  
[image004.jpg](#)

---

Hello Ms. Clevenger,

My name is Juan Pablo Galvan, Land Use Manager for Save Mount Diablo.

We were notified that a public notice was sent out regarding the possible extension of Dublin Blvd to N Canyon Pkwy.

Please email me the relevant documents for this project.

In addition, if there is any project related to Croak Rd and potential wetlands impacts, please forward that information along as well.

Thank you,

Juan Pablo Galván  
Land Use Manager  
Save Mount Diablo  
P (925) 947-3535 ext. 34  
F (925) 947-0642  
[jpgalvan@SaveMountDiablo.org](mailto:jpgalvan@SaveMountDiablo.org)  
1901 Olympic Blvd., Suite 320  
Walnut Creek, CA 94596  
[www.SaveMountDiablo.org](http://www.SaveMountDiablo.org)



## NATIVE AMERICAN HERITAGE COMMISSION

Environmental and Cultural Department  
1550 Harbor Blvd., Suite 100  
West Sacramento, CA 95691  
Phone (916) 373-3710



May 25, 2017

Obaid Khan  
City of Dublin  
100 Civic Plaza  
Dublin, CA 94568

Sent via e-mail: marissa.clevenger@dublin.ca.gov

RE: SCH# 2017052047; Dublin Boulevard-North Canyons Parkway Extension Project, Alameda County, California

Dear Mr. Khan:

The Native American Heritage Commission has received the Notice of Preparation (NOP) for Draft Environmental Impact Report for the project referenced above. The California Environmental Quality Act (CEQA) (Pub. Resources Code § 21000 et seq.), specifically Public Resources Code section 21084.1, states that a project that may cause a substantial adverse change in the significance of an historical resource is a project that may have a significant effect on the environment. (Pub. Resources Code § 21084.1; Cal. Code Regs., tit. 14, § 15064.5 (b) (CEQA Guidelines Section 15064.5 (b)). If there is substantial evidence, in light of the whole record before a lead agency, that a project may have a significant effect on the environment, an environmental impact report (EIR) shall be prepared. (Pub. Resources Code § 21080 (d); Cal. Code Regs., tit. 14, § 15064 subd. (a)(1) (CEQA Guidelines § 15064 (a)(1)). In order to determine whether a project will cause a substantial adverse change in the significance of a historical resource, a lead agency will need to determine whether there are historical resources with the area of project effect (APE).

**CEQA was amended significantly in 2014.** Assembly Bill 52 (Gatto, Chapter 532, Statutes of 2014) (AB 52) amended CEQA to create a **separate category of cultural resources**, "tribal cultural resources" (Pub. Resources Code § 21074) and provides that a project with an effect that may cause a substantial adverse change in the significance of a tribal cultural resource is a project that may have a significant effect on the environment (Pub. Resources Code § 21084.2). Please reference California Natural Resources Agency (2016) "Final Text for tribal cultural resources update to Appendix G: Environmental Checklist Form," <http://resources.ca.gov/ceqa/docs/ab52/Clean-final-AB-52-App-G-text-Submitted.pdf>. Public agencies shall, when feasible, avoid damaging effects to any tribal cultural resource. (Pub. Resources Code § 21084.3 (a)). **AB 52 applies to any project for which a notice of preparation or a notice of negative declaration or mitigated negative declaration is filed on or after July 1, 2015.** If your project involves the adoption of or amendment to a general plan or a specific plan, or the designation or proposed designation of open space, on or after March 1, 2005, it may also be subject to Senate Bill 18 (Burton, Chapter 905, Statutes of 2004) (SB 18). **Both SB 18 and AB 52 have tribal consultation requirements.** If your project is also subject to the federal National Environmental Policy Act (42 U.S.C. § 4321 et seq.) (NEPA), the tribal consultation requirements of Section 106 of the National Historic Preservation Act of 1966 (154 U.S.C. 300101, 36 C.F.R. § 800 et seq.) may also apply.

The NAHC recommends **lead agencies consult with all California Native American tribes** that are traditionally and culturally affiliated with the geographic area of your proposed project as early as possible in order to avoid inadvertent discoveries of Native American human remains and best protect tribal cultural resources. Below is a brief summary of portions of AB 52 and SB 18 as well as the NAHC's recommendations for conducting cultural resources assessments. **Consult your legal counsel about compliance with AB 52 and SB 18 as well as compliance with any other applicable laws.**

## AB 52

AB 52 has added to CEQA the additional requirements listed below, along with many other requirements:

1. Fourteen Day Period to Provide Notice of Completion of an Application/Decision to Undertake a Project: Within fourteen (14) days of determining that an application for a project is complete or of a decision by a public agency to undertake a project, a **lead agency** shall provide formal notification to a designated contact of, or tribal representative of, traditionally and culturally affiliated California Native American tribes that have requested notice, to be accomplished by at least one written notice that includes:
  - a. A brief description of the project.
  - b. The lead agency contact information.
  - c. Notification that the California Native American tribe has 30 days to request consultation. (Pub. Resources Code § 21080.3.1 (d)).
  - d. A "California Native American tribe" is defined as a Native American tribe located in California that is on the contact list maintained by the NAHC for the purposes of Chapter 905 of Statutes of 2004 (SB 18). (Pub. Resources Code § 21073).
2. Begin Consultation Within 30 Days of Receiving a Tribe's Request for Consultation and Before Releasing a Negative Declaration, Mitigated Negative Declaration, or Environmental Impact Report: A **lead agency** shall begin the consultation process within 30 days of receiving a request for consultation from a California Native American tribe that is traditionally and culturally affiliated with the geographic area of the proposed project. (Pub. Resources Code § 21080.3.1, subds. (d) and (e)) and prior to the release of a negative declaration, mitigated negative declaration or environmental impact report. (Pub. Resources Code § 21080.3.1(b)).
  - a. For purposes of AB 52, "consultation shall have the same meaning as provided in Gov. Code § 65352.4 (SB 18). (Pub. Resources Code § 21080.3.1 (b)).
3. Mandatory Topics of Consultation If Requested by a Tribe: The following topics of consultation, if a tribe requests to discuss them, are mandatory topics of consultation:
  - a. Alternatives to the project.
  - b. Recommended mitigation measures.
  - c. Significant effects. (Pub. Resources Code § 21080.3.2 (a)).
4. Discretionary Topics of Consultation: The following topics are discretionary topics of consultation:
  - a. Type of environmental review necessary.
  - b. Significance of the tribal cultural resources.
  - c. Significance of the project's impacts on tribal cultural resources.
  - d. If necessary, project alternatives or appropriate measures for preservation or mitigation that the tribe may recommend to the lead agency. (Pub. Resources Code § 21080.3.2 (a)).
5. Confidentiality of Information Submitted by a Tribe During the Environmental Review Process: With some exceptions, any information, including but not limited to, the location, description, and use of tribal cultural resources submitted by a California Native American tribe during the environmental review process shall not be included in the environmental document or otherwise disclosed by the lead agency or any other public agency to the public, consistent with Government Code sections 6254 (r) and 6254.10. Any information submitted by a California Native American tribe during the consultation or environmental review process shall be published in a confidential appendix to the environmental document unless the tribe that provided the information consents, in writing, to the disclosure of some or all of the information to the public. (Pub. Resources Code § 21082.3 (c)(1)).
6. Discussion of Impacts to Tribal Cultural Resources in the Environmental Document: If a project may have a significant impact on a tribal cultural resource, the lead agency's environmental document shall discuss both of the following:
  - a. Whether the proposed project has a significant impact on an identified tribal cultural resource.
  - b. Whether feasible alternatives or mitigation measures, including those measures that may be agreed to pursuant to Public Resources Code section 21082.3, subdivision (a), avoid or substantially lessen the impact on the identified tribal cultural resource. (Pub. Resources Code § 21082.3 (b)).

7. Conclusion of Consultation: Consultation with a tribe shall be considered concluded when either of the following occurs:
- The parties agree to measures to mitigate or avoid a significant effect, if a significant effect exists, on a tribal cultural resource; or
  - A party, acting in good faith and after reasonable effort, concludes that mutual agreement cannot be reached. (Pub. Resources Code § 21080.3.2 (b)).
8. Recommending Mitigation Measures Agreed Upon in Consultation in the Environmental Document: Any mitigation measures agreed upon in the consultation conducted pursuant to Public Resources Code section 21080.3.2 shall be recommended for inclusion in the environmental document and in an adopted mitigation monitoring and reporting program, if determined to avoid or lessen the impact pursuant to Public Resources Code section 21082.3, subdivision (b), paragraph 2, and shall be fully enforceable. (Pub. Resources Code § 21082.3 (a)).
9. Required Consideration of Feasible Mitigation: If mitigation measures recommended by the staff of the lead agency as a result of the consultation process are not included in the environmental document or if there are no agreed upon mitigation measures at the conclusion of consultation, or if consultation does not occur, and if substantial evidence demonstrates that a project will cause a significant effect to a tribal cultural resource, the lead agency shall consider feasible mitigation pursuant to Public Resources Code section 21084.3 (b). (Pub. Resources Code § 21082.3 (e)).
10. Examples of Mitigation Measures That, If Feasible, May Be Considered to Avoid or Minimize Significant Adverse Impacts to Tribal Cultural Resources:
- Avoidance and preservation of the resources in place, including, but not limited to:
    - Planning and construction to avoid the resources and protect the cultural and natural context.
    - Planning greenspace, parks, or other open space, to incorporate the resources with culturally appropriate protection and management criteria.
  - Treating the resource with culturally appropriate dignity, taking into account the tribal cultural values and meaning of the resource, including, but not limited to, the following:
    - Protecting the cultural character and integrity of the resource.
    - Protecting the traditional use of the resource.
    - Protecting the confidentiality of the resource.
  - Permanent conservation easements or other interests in real property, with culturally appropriate management criteria for the purposes of preserving or utilizing the resources or places.
  - Protecting the resource. (Pub. Resource Code § 21084.3 (b)).
  - Please note that a federally recognized California Native American tribe or a nonfederally recognized California Native American tribe that is on the contact list maintained by the NAHC to protect a California prehistoric, archaeological, cultural, spiritual, or ceremonial place may acquire and hold conservation easements if the conservation easement is voluntarily conveyed. (Civ. Code § 815.3 (c)).
  - Please note that it is the policy of the state that Native American remains and associated grave artifacts shall be repatriated. (Pub. Resources Code § 5097.991).
11. Prerequisites for Certifying an Environmental Impact Report or Adopting a Mitigated Negative Declaration or Negative Declaration with a Significant Impact on an Identified Tribal Cultural Resource: An environmental impact report may not be certified, nor may a mitigated negative declaration or a negative declaration be adopted unless one of the following occurs:
- The consultation process between the tribes and the lead agency has occurred as provided in Public Resources Code sections 21080.3.1 and 21080.3.2 and concluded pursuant to Public Resources Code section 21080.3.2.
  - The tribe that requested consultation failed to provide comments to the lead agency or otherwise failed to engage in the consultation process.
  - The lead agency provided notice of the project to the tribe in compliance with Public Resources Code section 21080.3.1 (d) and the tribe failed to request consultation within 30 days. (Pub. Resources Code § 21082.3 (d)).

*This process should be documented in the Cultural Resources section of your environmental document.*

The NAHC's PowerPoint presentation titled, "Tribal Consultation Under AB 52: Requirements and Best Practices" may be found online at: [http://nahc.ca.gov/wp-content/uploads/2015/10/AB52TribalConsultation\\_CalEPAPDF.pdf](http://nahc.ca.gov/wp-content/uploads/2015/10/AB52TribalConsultation_CalEPAPDF.pdf)

## SB 18

SB 18 applies to local governments and requires **local governments** to contact, provide notice to, refer plans to, and consult with tribes prior to the adoption or amendment of a general plan or a specific plan, or the designation of open space. (Gov. Code § 65352.3). Local governments should consult the Governor's Office of Planning and Research's "Tribal Consultation Guidelines," which can be found online at: [https://www.opr.ca.gov/docs/09\\_14\\_05\\_Updated\\_Guidelines\\_922.pdf](https://www.opr.ca.gov/docs/09_14_05_Updated_Guidelines_922.pdf)

Some of SB 18's provisions include:

1. **Tribal Consultation:** If a local government considers a proposal to adopt or amend a general plan or a specific plan, or to designate open space it is required to contact the appropriate tribes identified by the NAHC by requesting a "Tribal Consultation List." If a tribe, once contacted, requests consultation the local government must consult with the tribe on the plan proposal. **A tribe has 90 days from the date of receipt of notification to request consultation unless a shorter timeframe has been agreed to by the tribe.** (Gov. Code § 65352.3 (a)(2)).
2. **No Statutory Time Limit on SB 18 Tribal Consultation.** There is no statutory time limit on SB 18 tribal consultation.
3. **Confidentiality:** Consistent with the guidelines developed and adopted by the Office of Planning and Research pursuant to Gov. Code section 65040.2, the city or county shall protect the confidentiality of the information concerning the specific identity, location, character, and use of places, features and objects described in Public Resources Code sections 5097.9 and 5097.993 that are within the city's or county's jurisdiction. (Gov. Code § 65352.3 (b)).
4. **Conclusion of SB 18 Tribal Consultation:** Consultation should be concluded at the point in which:
  - a. The parties to the consultation come to a mutual agreement concerning the appropriate measures for preservation or mitigation; or
  - b. Either the local government or the tribe, acting in good faith and after reasonable effort, concludes that mutual agreement cannot be reached concerning the appropriate measures of preservation or mitigation. (Tribal Consultation Guidelines, Governor's Office of Planning and Research (2005) at p. 18).

Agencies should be aware that neither AB 52 nor SB 18 precludes agencies from initiating tribal consultation with tribes that are traditionally and culturally affiliated with their jurisdictions before the timeframes provided in AB 52 and SB 18. For that reason, we urge you to continue to request Native American Tribal Contact Lists and "Sacred Lands File" searches from the NAHC. The request forms can be found online at: <http://nahc.ca.gov/resources/forms/>

## NAHC Recommendations for Cultural Resources Assessments

To adequately assess the existence and significance of tribal cultural resources and plan for avoidance, preservation in place, or barring both, mitigation of project-related impacts to tribal cultural resources, the NAHC recommends the following actions:

1. Contact the appropriate regional California Historical Research Information System (CHRIS) Center ([http://ohp.parks.ca.gov/?page\\_id=1068](http://ohp.parks.ca.gov/?page_id=1068)) for an archaeological records search. The records search will determine:
  - a. If part or all of the APE has been previously surveyed for cultural resources.
  - b. If any known cultural resources have been already been recorded on or adjacent to the APE.
  - c. If the probability is low, moderate, or high that cultural resources are located in the APE.
  - d. If a survey is required to determine whether previously unrecorded cultural resources are present.
2. If an archaeological inventory survey is required, the final stage is the preparation of a professional report detailing the findings and recommendations of the records search and field survey.
  - a. The final report containing site forms, site significance, and mitigation measures should be submitted immediately to the planning department. All information regarding site locations, Native American human remains, and associated funerary objects should be in a separate confidential addendum and not be made available for public disclosure.

- b. The final written report should be submitted within 3 months after work has been completed to the appropriate regional CHRIS center.
- 3. Contact the NAHC for:
  - a. A Sacred Lands File search. Remember that tribes do not always record their sacred sites in the Sacred Lands File, nor are they required to do so. A Sacred Lands File search is not a substitute for consultation with tribes that are traditionally and culturally affiliated with the geographic area of the project's APE.
  - b. A Native American Tribal Consultation List of appropriate tribes for consultation concerning the project site and to assist in planning for avoidance, preservation in place, or, failing both, mitigation measures.
- 4. Remember that the lack of surface evidence of archaeological resources (including tribal cultural resources) does not preclude their subsurface existence.
  - a. Lead agencies should include in their mitigation and monitoring reporting program plan provisions for the identification and evaluation of inadvertently discovered archaeological resources per Cal. Code Regs., tit. 14, section 15064.5(f) (CEQA Guidelines section 15064.5(f)). In areas of identified archaeological sensitivity, a certified archaeologist and a culturally affiliated Native American with knowledge of cultural resources should monitor all ground-disturbing activities.
  - b. Lead agencies should include in their mitigation and monitoring reporting program plans provisions for the disposition of recovered cultural items that are not burial associated in consultation with culturally affiliated Native Americans.
  - c. Lead agencies should include in their mitigation and monitoring reporting program plans provisions for the treatment and disposition of inadvertently discovered Native American human remains. Health and Safety Code section 7050.5, Public Resources Code section 5097.98, and Cal. Code Regs., tit. 14, section 15064.5, subdivisions (d) and (e) (CEQA Guidelines section 15064.5, subds. (d) and (e)) address the processes to be followed in the event of an inadvertent discovery of any Native American human remains and associated grave goods in a location other than a dedicated cemetery.

Please contact me if you need any additional information at [gayle.totton@nahc.ca.gov](mailto:gayle.totton@nahc.ca.gov).

Sincerely,

  
Gayle Totton, M.A., PhD.  
Associate Governmental Program Analyst

cc: State Clearinghouse



May 25, 2017

City of Dublin City Council, Planning Commission and Staff  
C/O: Marissa Clevenger, Office Assistant II  
City of Dublin  
100 Civic Plaza  
Dublin, CA, 94568

**RE: EIR Scoping Comments for Dublin Extension Project**


Dear City of Dublin City Council, Planning Commission, and Staff,

Thank you for providing the opportunity to comment on the scope of the EIR for the Dublin Blvd. extension. Chamberlin Associates owns the approximately 11-acre parcel at the southwest intersection of Airway Blvd. and North Canyons Pkwy. in Livermore. I request the following be studied and addressed in the EIR:

- LOS at the intersection of Airway Blvd. and North Canyons Pkwy.
- Queuing near the intersection of Airway Blvd. and North Canyons Pkwy. in general, queuing for eastbound traffic on North Canyons Pkwy. before Airway Blvd., and queuing at the I-580 on and off ramps at Airway Blvd.
- All needed roadway and intersection improvements (e.g., needed lane additions, widening, etc.) near the intersection of Airway Blvd., North Canyons Pkwy., and the I-580 on and off ramps.
- Funding of needed roadway and intersections improvements for the project, including those near the intersection of Airway Blvd., North Canyons Pkwy., and the I-580 on and off ramps at Airway Blvd.

Regarding EIR alternatives, Collier Canyon Road is an existing partial freeway frontage road along the north side of I-580 in the vicinity of proposed Dublin Blvd. extension. As an alternative, please study a connection of Collier Canyon Road to Croak Road with and without the extension of Dublin Blvd.

Sincerely,



Doug Giffin  
Vice President  
Chamberlin Associates

---

*Real Estate Development, Management & Consultation*

5860 West Las Positas Boulevard Suite 21 Pleasanton, CA 94588-8552 925/227-0707 FAX 925/227-0277



**From:** Obaid Khan  
**To:** Marissa Clevenger  
**Cc:** FW: Dublin Blvd Ext - Interested Party  
**Subject:** Friday, May 26, 2017 11:13:06 AM  
**Date:** image001.png  
**Attachments:**

---

Hi Marissa, please add this communication to the NOP folder in the Project CIP folder where you are tracking all other comments. Also please add her to the master mailing list, under a separate tab so we know who we are adding.

Thanks, Obaid.

---

**From:** Jeff Baker  
**Sent:** Friday, May 26, 2017 11:09 AM  
**To:** Obaid Khan  
**Subject:** Dublin Blvd Ext - Interested Party

Obaid,

The following person addressed the Planning Commission on May 23 under oral communication. She spoke against the Dublin Boulevard extension citing concerns about too much traffic, creating a freeway bypass, and encouraging more homes and businesses. She would like to be notified of future meetings and hearings about the project. Here is her contact information:

Elaine Bagwell  
11718 Solana

925-895-6058

[REDACTED]



**Jeff Baker**  
**Assistant Community Development Director**  
City of Dublin  
100 Civic Plaza, Dublin, CA 94568  
(925) 833-6610 | (925) 833-6628 FAX  
[jeff.baker@dublin.ca.gov](mailto:jeff.baker@dublin.ca.gov) | [www.dublin.ca.gov](http://www.dublin.ca.gov)

**Mission Statement:** *The City of Dublin promotes and supports a high quality of life, ensures a safe and secure environment, and fosters new opportunities.*

**From:** [Johan Rydell](#)  
**To:** [Marissa Clevenger](#)  
**Subject:** Dublin Boulevard-North Canyons Parkway Extension Project  
**Date:** Friday, May 26, 2017 5:18:58 PM

---

Hi,

I think this is a bad idea. Just ask one simple question: Do we need extra traffic from 580 to our back streets?

We now live in Dublin but lived in Pleasanton before close to both West Las Positas and Stoneridge. They connected Stoneridge to Livermore and extra traffic was the result directly.

Unless the 580 is fixed, extra traffic will find it's way to any back street. Google map might just tell you directly: "We found a new route, you can save 5 minutes to use Dublin Blvd".

Thanks,

Johan

**From:** vic\_avila  
**To:** dzpontau; Marissa Clevenger  
**Cc:** "vic\_avila"  
**Subject:** Objection to Dublin Blvd. Extension to Livermore  
**Date:** Saturday, May 27, 2017 2:03:33 PM

---

As a citizen of Livermore, I want to register my opposition to this roadway extension. In my opinion, this does not offer benefits to the residents of Livermore, but puts more traffic on City streets and unfortunately fosters the development of open space, a commodity that exists in Livermore to some extent, but does not exist in good measure in neighboring cities as development has become their cash cow.

**From:** [ken.masterman](#)  
**To:** [Marissa.Clevenger](#)  
**Subject:** NO DUBLIN BLVD EXTENSION  
**Date:** Sunday, May 28, 2017 8:18:03 AM

---

NO EXTENSION OF DUBLIN BLVD TO LIVERMORE!

We don't want your traffic being dumped into our part of the city and the homes that the city will try to build along the road to us.

This is a ploy to get a toehold to the land so a developer/home builder will put on the ballot a measure to undue the growth boundaries Dublin residents voted for.

Your city should be ashamed of being a whore to the builders over the last 25 years and spreading the ugly blight across this valley.

Kenneth Masterman

Livermore resident Collier canyon area.

**From:** [Minh Thai](#)  
**To:** [Marissa Clevenger](#)  
**Subject:** Re: Notice of Preparation of an Environmental Impact Report and Notice of Public Scoping Meeting for the Dublin Boulevard-North Canyons Parkway Extension Project  
**Date:** Saturday, May 27, 2017 2:11:25 AM

---

(Sorry, I have to resend this)

Hi

I am a resident of East Dublin. My address is 1780 S Terracina Dr Dublin, CA 94568. My family support the extension project of Dublin Boulevard to North Canyon Parkway for the following reasons:

- 1) Dublin has trouble finding a suitable lot for the school right now. Chen property would become a more viable option for the second high School if we build this extension since this lot is large enough for a comprehensive High school.
- 2) It will be very convenient for Las Positas College students who live in east Dublin. They can simply ride bikes or ebikes from E Dublin to the College without having to take the long Jack London Boulevard route on Livermore side of 580.
- 3) better public buses service between East Dublin and the College and its surrounding business

Regards

Minh Thai

From: [Steve Wright](#)  
To: [Marissa Clevenger](#)  
Subject: Dublin Boulevard Extension  
Date: Tuesday, May 30, 2017 4:33:27 PM

---

Ms. Clevenger:

I am adamantly OPPOSED to the extension of Dublin Boulevard any further east than what it currently is at Fallon Road. If you think the traffic that we permanent residents have to experience, all day-every day, is atrocious, it will only be much worse if the extension is permitted to go through.

Everybody, and their brother-in-law, now use Dublin Boulevard to by-pass I-580 between San Ramon Road and Fallon Road. And, it is even worse especially during the peak commute hours. Adding another four to six lanes will only make matter worse.

The completion of the commuter Express Lanes have done nothing to alleviate the congestion either on I-580 or surface streets. I believe that they have made things worse as there are no exit lanes out of the Express lanes to the various exits between Greenville Road and San Ramon Road and everyone just jumps, willy-nilly, in and out whenever they feel like it with little regard for any other vehicles that happen to be utilizing any of the other lanes.

Steve Wright  
Resident since 1976

I Speak My Mind Because It Hurts To Bite My Tongue All The Time.

From: Dave Campbell  
To: Marissa Clevenger  
Cc: Kristi Marleau  
Subject: Dublin Boulevard - North Canyons Parkway Extension Project  
Date: Thursday, June 01, 2017 4:35:27 PM

---

Marissa

On behalf of Bike East Bay, we want to see protected bike lanes studied on the Dublin Boulevard - North Canyons Parkway Extension Project. For more information on protected bike lanes, otherwise known as cycle tracks and separated bikeways, please see:

[https://www.fhwa.dot.gov/environment/bicycle\\_pedestrian/publications/separated\\_bikelane\\_pdg/index.cfm](https://www.fhwa.dot.gov/environment/bicycle_pedestrian/publications/separated_bikelane_pdg/index.cfm)

This new propose roadway will connect to many important destinations and for this reason will see significant bike traffic, if properly designed. In addition, most arterial streets in Dublin are high-speed, multi-lane roadways, which require "separation" and "protection" of residents bicycling from moving cars. As part of this request, please also consider protected intersections per Caltrans' standard, [which are detailed here](#).

Please let me know if you have any questions regarding this input on your scoping process for the project.

--

Dave Campbell  
Advocacy Director  
Bike East Bay

\*\*\*\*\*

Office: 466 Water Street at Jack London Square in Oakland  
Mail: PO Box 1736, Oakland, CA 94604  
Office: (510) 845-RIDE  
Cell: [\(510\) 701-5971](tel:5107015971)  
[BikeEastBay.org](http://BikeEastBay.org)

*Pledge to ride on Bike to Work Day! By riding together on Thursday, May 11, you will show East Bay cities and counties how bikes count.*

From: [Ray Y Chang](#)  
To: [Marissa Clevenger](#)  
Subject: Comments for Dublin Blvd extension project after 5/31/17 public hearing  
Date: Friday, June 02, 2017 9:44:26 AM

---

Marissa,

Here are my comments.

Thanks,

Ray

1. Recommend to add the bike route to this project. Bike route is expected to separate from traveled ways. If it can be located behind the sidewalk, it benefits pedestrians' safety, especially children and seniors. I hope it can be like the Iron horse trail.
2. Recommend to add a retention/detention pond in a park to this project. The uphill land is over-developed and cover with concrete or asphalt pavement. Sooner or later downhill side will get flooded. To build a park with a retention/detention pond next to the road will ease the flooding issue.
3. Recommend to add a utility joint trench for Electricity, Water, sewer, Gas, Cable TV, recycle water and so on. It helps the street aesthetic.
4. Recommend the street width can be 120' wide or more to accommodate three 12' traveled lanes with 8' shoulder, 10' sidewalk for each directions. Plus, 5' landscape behind the sidewalk, 5' bike route behind the landscape and 6' median.
5. When choosing the street trees, please consider sycamore as your last choice. Sycamore grows fast but it also causes allergy to people.
6. Can City select a more beautiful style and economic street light instead of typical galvanized one? This kind street light can represent the City of Dublin and let residents and tourists remember Dublin when they see the street light.
7. Recommend the flash beacons for crosswalks which are not located at intersections to protect pedestrians
8. Recommend to include bus stops in this project.
9. Do you consider roundabout in the intersection?
10. Recommend a Park & Ride nearby Fallon Road.



From: .K Barker  
To: Marissa Clevenger  
Subject: N Canyons Pkwy  
Date: Monday, June 05, 2017 9:09:12 PM

---

Please include a protected bike lane. This road has the potential to be a great east-west route for cyclists and runners. However, cars will travel quickly no matter the posted speed because of the openness of that area (lack of houses, businesses, and people). Because of this, a protected bike lane is necessary.

-Katheryn Barker

**From:** [Areana Flores](#)  
**To:** [Marissa Clevenger](#)  
**Subject:** Follow-up question  
**Date:** Tuesday, June 06, 2017 2:43:46 PM  
**Attachments:** [image003.jpg](#)

---

Hi Marissa,

I was seeking clarification for the following statement found in the NOP under Land Use Designations.

“Previous environmental documents, such as the Eastern Dublin EIR (2002) and the Fallon Village Supplemental EIR (2005), considered and cleared future development within the immediate vicinity of the study area, within the City of Dublin. The Dublin Boulevard – North Canyons Parkway extension project was considered in these documents.”

How was this Project considered in the two previous EIR’s and what was the result of that consideration?

Thank you,



**Areana Flores**

Planning & Climate Protection Division  
Bay Area Air Quality Management District  
375 Beale St, Suite 600 | San Francisco, CA 94105



**Dublin San Ramon  
Services District**

*Water, wastewater, recycled water*

7051 Dublin Boulevard  
Dublin, CA 94568-3018

phone (925) 828-0515  
fax (925) 829-1180  
www.dsrdsd.com

**Letter 18**

June 6, 2017

Obaid Khan, Transportation and Operations Manager  
City of Dublin  
100 Civic Plaza  
Dublin, CA 94568  
Attn: Marissa Clevenger, Office Assistant II

**Subject: Comments on Notice of Preparation of an Environmental Impact Report and Notice of Public Scoping Meeting for the Dublin Boulevard-North Canyons Parkway Extension Project**

Dear Mr. Khan:

Thank you for providing Dublin San Ramon Services District (DSRSD) the opportunity to review and comment on the Dublin Boulevard-North Canyons Parkway Extension Project. DSRSD had a representative at the scoping meeting held on May 31, 2017, who reviewed the information presented at the meeting and has reviewed the information in the Notice of Preparation.

DSRSD will be directly concerned with the Utilities and Service Systems details of this project. The proposed right-of-way for Dublin Boulevard to the City of Dublin's boundary will be used for the extension of DSRSD's potable water, recycled water and wastewater service mains. DSRSD will provide potable water, recycled water and wastewater collection services to those properties served by the extension of Dublin Boulevard. DSRSD's service area extends to the city limit for the City of Dublin.

DSRSD's primary concern will be with the layout of Dublin Boulevard and placement of DSRSD's facilities. DSRSD strongly recommends that the layout of Dublin Boulevard be adequately planned and that there would be no significant modification of the route of Dublin Boulevard once the plan is finalized. To minimize construction conflict and cutting into pavement, DSRSD anticipates its pipelines will be installed within the public right-of-way prior road construction and final paving. DSRSD will coordinate with the City regarding this effort.

The road and utilities extension provides an opportunity for an emergency intertie between DSRSD's potable water system and the City of Livermore's potable water system at the boundary between Dublin and Livermore. An emergency intertie of the potable water systems at this location would improve the reliability of DSRSD's and Livermore's potable water systems.

DSRSD looks forward to continuing our rewarding collaboration with the City of Dublin through this project. If you have any questions, please contact Stan Kolodzie at (925)8875-2253 or kolodzie@dsrdsd.com.

Sincerely,



RHODORA N. BIAGTAN  
Principal Engineer

SK/ST

cc: Stan Kolodzie, Associate Engineer  
Ryan Pendergraft, Junior Engineer  
Bonifacio Duenas, Engineering Tech/GIS Specialist II

**From:** [Brian Holt](#)  
**To:** [Marissa Clevenger](#)  
**Cc:** [Bob Nisbet](#); [Neoma Lavalle](#)  
**Subject:** North Canyons Parkway Extension Project Scoping Comments  
**Date:** Thursday, June 08, 2017 3:42:15 PM  
**Attachments:** [image001.png](#)  
[EBRPD Scoping Comments North Canyons Parkway Ext 060817.pdf](#)

---

Attached are the East Bay Regional Park District's scoping comments on the North Canyons Parkway Extension Project.

Thank you -



**Brian Holt**

**Principal Planner** | Advance Planning Unit  
East Bay Regional Park District  
2950 Peralta Oaks Court, Oakland, CA 94605  
T: 510-544-2623 | F: 510-569-1417  
[BHolt@ebparks.org](mailto:BHolt@ebparks.org) | [www.ebparks.org](http://www.ebparks.org)

**STATEMENT OF CONFIDENTIALITY** | This electronic message and any files or attachments transmitted with it may be confidential, privileged, or proprietary information of the East Bay Regional Park District. The information is solely for the use of the individual or entity to which it was intended to be addressed. If the reader of this message is not the intended recipient, you are hereby notified that use, distribution, or copying of this e-mail is strictly prohibited. If you received this e-mail in error, please notify the sender immediately, destroy any copies, and delete it from your system.



Please consider the environment before you print



June 8, 2017

City of Dublin  
100 Civic Plaza  
Dublin, CA 94568  
Attn: Marissa Clevenger, Office Assistant II

Sent via email to [marissa.clevenger@dublin.ca.gov](mailto:marissa.clevenger@dublin.ca.gov)

**RE: Scoping Comments – Dublin Boulevard – North Canyons Parkway Extension Project**

To Whom It May Concern –

The East Bay Regional Park District (EBRPD) appreciates the opportunity to provide initial scoping comments on the North Canyons Parkway Extension Project. The District owns and manages over 120,000 acres of parkland and open space and 29 regional inter-park trails within Alameda and Contra Costa Counties. EBRPD works in partnership with the cities, counties, and other agencies to implement the District's Master Plan and the plans of other agencies.

The Draft Environmental Impact Report (DEIR) will need to be comprehensive in its analysis of the extension of Dublin Boulevard to North Canyons Parkway. The roadway will be extended through an unincorporated area between the cities of Dublin and Livermore that is currently designated primarily as Resource Management. The western portion of the project area is bound by the Eastern Dublin Urban Limit Line established in January of 2014 through the Dublin Open Space Initiative of 2014 and establishes the eastern city limits of Dublin as the urban limit line. The North Livermore Urban Growth Boundary bounds the eastern portion of the project area at Doolan Road.

The project area contains a number of sensitive species and protected habitats including a known highly functioning vernal pool at the eastern extent of the project site. Local botanists and scientists have identified an array of rare species in this vernal pool that grow in mass and size that exceeds other locations of protected populations including at the Springtown preserve located to the east of the project site.

The DEIR will need to fully evaluate the projects potential impacts on protected species and habitats in the area from project construction, long-term operation, and growth inducement. The project should be designed in a manner to avoid impacts to protected species and habitats and sufficient mitigation will need to be identified to mitigate for any remaining impacts. The function of vernal pools are highly dependent on the function of the larger watershed which is currently designated as Resource Management and located outside of the urban growth boundaries of both Livermore and Dublin. The DEIR should provide

Board of Directors

Beverly Lane  
President  
Ward 6

Dennis Waespi  
Vice-President  
Ward 3

Ayn Wieskamp  
Treasurer  
Ward 5

Ellen Corbett  
Secretary  
Ward 4

Whitney Dotson  
Ward 1

Dee Rosario  
Ward 2

Colin Coffey  
Ward 7

Robert E. Doyle  
General Manager

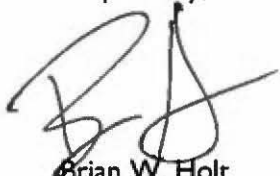


additional assurances that this project will not result in direct or indirect impacts to the project area or the broader watershed that support protected species and habitats. The District would welcome the opportunity to work with the cities of Dublin and Livermore and Alameda County to ensure the long-term protection of this unique habitat.

Additionally, the project is primarily intended to improve automobile mobility. The project should be designed to facilitate non-motorized mobility as well through construction of separated bicycle and pedestrian facilities. The Dublin Bicycle and Pedestrian Master Plan does identify both a Class I shared-use pathway and a Class IIA bicycle lane along the alignment of the North Canyons Parkway Extension project.

Thank you for the opportunity to provide these initial scoping comments. We look forward to reviewing the environmental analysis and proposed plans. Please ensure the District is included on any future notifications regarding this project.

Respectfully,

A handwritten signature in black ink, appearing to read 'B. Holt', with a stylized flourish extending from the end.

Brian W. Holt  
Principal Planner

Cc: Bob Nisbet, AGM

**From:** Orduna, Rodrigo, CDA  
**Sent:** Friday, June 09, 2017 9:31 AM  
**To:** [Obaid.Khan](mailto:Obaid.Khan)  
**Cc:** ; Horvath, Cindy, CDA  
**Subject:** FW: Public Scoping Meeting PP

---

Greetings, Obaid.

In addition to Alameda County general plan policies in the East County Area Plan that I sent out months earlier about limiting growth as a result of the Dublin Blvd-North Canyons Parkway Extension, my colleague Liz McElligott, copied herein, reminded me of the additional policies that she lists below.

Can these be included in the EIR analysis as well?

Regards,

Rodrigo

Rodrigo Orduña, *AICP*  
Assistant Planning Director  
Alameda County Planning Department  
Community Development Agency

[rodrigo.orduna@acgov.org](mailto:rodrigo.orduna@acgov.org)  
telephone 510-670-6503  
facsimile 510-785-8793

224 West Winton Avenue, Suite 111  
Hayward, CA 94544  
<http://www.acgov.org/cda>

CONFIDENTIALITY NOTICE: This e-mail message including attachments, if any, is intended only for the person(s) or entity(ies) to which it is addressed any may contain confidential and/or privileged material. Any unauthorized review, use, disclosure or distribution is prohibited. If you are not the intended recipient, please contact the sender by reply e-mail and destroy all copies of the original message.

**From:** McElligott, Elizabeth, CDA  
**Sent:** Wednesday, June 07, 2017 9:22 AM  
**To:** Orduna, Rodrigo, CDA <[rodrigo.orduna@acgov.org](mailto:rodrigo.orduna@acgov.org)>; Horvath, Cindy, CDA <[cindy.horvath@acgov.org](mailto:cindy.horvath@acgov.org)>  
**Subject:** RE: Public Scoping Meeting PP

Rodrigo – Thank you for forwarding your previous emails. I agree that there's nothing in ECAP that would preclude building the road, but here are some additional policies that I think should be taken into consideration. Also, please note that the area the road will pass through is designated Resource Management.

Policy 51: The County shall work with East County cities to preserve a **continuous open space system** outside the Urban Growth Boundary with priority given to the permanent protection of the Resource Management area between Dublin and North Livermore and the area north of the Urban Growth Boundary in North Livermore, as established through Program 19.

Policy 52: The County shall preserve **open space areas** for the protection of public health and safety, provision of recreational opportunities, production of natural resources (e.g., agriculture, windpower, and mineral extraction), protection of sensitive viewsheds (*see definition in Table 1*), preservation of biological resources, and the physical separation between neighboring communities (*see Figure 4*).

Policy 109: The County shall preserve **community separators** largely in open space in the following locations:

1. The Resource Management area of approximately 7,400 acres separating East Dublin and North Livermore;

Policy 112: The County shall require development to maximize views of the following prominent **visual features**:

1. The major ridgelines listed in Policy 105; [*which include ridgelines above Doolan Canyon east of Dublin*]

Policy 114: The County shall require the use of **landscaping** in both rural and urban areas to enhance the scenic quality of the area and to screen undesirable views. Choice of plants should be based on compatibility with surrounding vegetation, drought-tolerance, and suitability to site conditions; and in rural areas, habitat value and fire retardance.

\*Policy 115: In all cases appropriate building materials, landscaping and screening shall be required to minimize the visual impact of development. Development shall blend with and be subordinate to the environment and character of the area where located, so as to be as unobtrusive as possible and not detract from the natural, open space or visual qualities of the area. To the maximum extent practicable, all exterior lighting must be located, designed and shielded so as to confine direct rays to the parcel where the lighting is located.

\*Policy 116: To the maximum extent possible, development shall be located and designed to conform with rather than change natural landforms. The alteration of natural topography, vegetation, and other characteristics by grading, excavating, filling or other development activity shall be minimized. To the extent feasible, access roads shall be consolidated and located where they are least visible from public view points.

Policy 117: The County shall require that where grading is necessary, the off-site visibility of **cut and fill slopes** and drainage improvements is minimized. Graded slopes shall be designed to simulate natural contours and support vegetation to blend with surrounding undisturbed slopes.

Policy 123: Where site-specific impacts on biological resources resulting from a proposed land use outside the Urban Growth Boundary are identified, the County shall encourage that



mitigation is complementary to the goals and objectives of the ECAP. To that end, the County shall recommend that mitigation efforts occur in areas designated as "**Resource Management**" or on lands adjacent to or otherwise contiguous with these lands in order to establish a continuous open space system in East County and to provide for long term protection of biological resources.

Policy 131: The County shall require that **roadways** be designed to minimize impacts to wildlife corridor and regional trails. Where appropriate, grade-separated crossings and/or other features shall be used to maintain the viability of the affected corridor.

Liz McElligott

**From:**  
**To:** [Marissa Clevenger](#)  
**Subject:** NOP for Dublin Blvd - No. Canyon Parkways Extension Project  
**Date:** Wednesday, June 14, 2017 10:46:13 AM

---

Dear Dublin planners,

There are two errors in the Notice of Preparation referenced in the subject line.

(1) Alameda County does not consider Dublin's Sphere of Influence to extend across the unincorporated area between the Dublin and Livermore city limit lines. East County Area Plan (ECAP) Figure 1 clearly shows the Dublin SOI to stop at the Dublin city limits.

(2) In Figure 2 of the NOP, the southeast corner of the unincorporated portion of the Study Area is incorrectly shown to be Major Public. It is in fact designated Large Parcel Agriculture. There is an error in the currently available ECAP Land Use Diagram. Elizabeth McElligott of the County's Planning Department confirmed this error in her email to me copied below. You should contact her for confirmation if necessary.

Please acknowledge receipt of this message. Thank you.

Sincerely,  
Dick Schneider, Sierra Club Tri-Valley Group

Hi Dick,

The redesignation of that parcel was an error. It should be Large Parcel Agriculture. The designation of some slivers of parcels along I-580 that are owned by Caltrans was changed to Major Public to reflect their ownership and the property you asked about was inadvertently included. The map will be corrected.

The designation changes were made about six months ago. At the same time, land that had been acquired by one of the park districts since the last map update was done was changed to the Parklands designation. Also, the designation of the Vargas Plateau and the area between the SFPUC land and the EBRPD land between Calaveras Road and Lake del Valle were changed from Large Parcel Ag to Resource Management to correct an error that was made when the plan was revised after Measure D passed.

Liz McElligott

**From:**  
**Sent:** Friday, June 09, 2017 11:33 AM  
**To:** McElligott, Elizabeth, CDA <[elizabeth.mcelligott@acgov.org](mailto:elizabeth.mcelligott@acgov.org)>  
**Subject:** ECAP land use diagram question

Hi Liz,

Dublin is starting a process for extending Dublin Blvd to N. Canyons Parkway in Livermore. Part of that road would cross unincorporated area. The NOP shows the southeast corner of the unincorporated

parcel to be designated Major Public, and indeed the current version of the ECAP land use diagram shows it that way as well. The version of the land use diagram that I have on my computer, downloaded from the county's website some time ago, as well as the hardcopy of the ECAP that I have shows that corner to be designated Large Parcel Agriculture.

Was there a redesignation of that area that I'm not aware of? If so, when did it take place and why? Or is the diagram now on the county's site inaccurate for that area? If that area was indeed redesignated, are there any other redesignations that have taken place?

Thanks for filling me in.  
Dick

**Board of Directors**

Scott Hein

*President*

Amara Morrison

*Secretary*

Burt Bassler

*Treasurer*

Heath Bartosh

Joe Canciamilla

John Gallagher

Jim Felton

Liz Harvey

Claudia Hein

Bob Marx

Sue Ohanian

Malcolm Sproul

Jeff Stone

**Directors****Staff Directors**

Edward Sortwell Clement Jr.

*Executive Director*

Seth Adams

*Land Conservation Director*

Meredith Hendricks

*Land Programs Director*

Monica E. Oei

*Finance & Administration*

*Director*

Deborah Toll White

*Development Director*

**Founders**

Arthur Bonwell

Mary L. Bowerman

**Proud Member of**

Land Trust Alliance

California Council of Land Trusts

Bay Area Open Space Council



June 15<sup>th</sup>, 2017

Letter 22

Marissa Clevenger

Office Assistant II

City of Dublin

100 Civic Plaza

Dublin, CA 94568

**RE: Notice of Preparation (NOP) of an Environmental Impact Report (EIR) for the Dublin Boulevard-North Canyons Parkway Extension Project (Project)**

Dear Ms. Clevenger,

Save Mount Diablo (SMD) is a non-profit conservation organization founded in 1971 which acquires land for addition to parks on and around Mount Diablo and monitors land use planning which might affect protected lands. We build trails, restore habitat, and are involved in environmental education. In 1971 there was just one park on Mount Diablo totaling 6,778 acres; today there are almost 50 parks and preserves around Mount Diablo totaling 110,000 acres. We include more than 8,000 donors and supporters.

We appreciate the opportunity to comment on the NOP for the Project. As one of the lead organizations of the Dublin Open Space Initiative and subsequent No On T campaigns of 2014, focused on protecting Doolan Canyon with a new east-side Dublin Urban Limit Line (ULL) and defeating a developer-backed threat to the new ULL, we have a special interest in ensuring the protection of Doolan Canyon and wetland habitat that may be affected by the Project.

Below we point out corrections that should be made in the NOP and provide more detail on the wetlands area near Croak Rd. that should be considered and analyzed in the EIR for the Project.

**Small Errors in NOP**

The NOP does a fine job of pointing out that the portion of the study area within Alameda County between the cities of Dublin and Livermore (the Doolan Canyon portion) is subject to the Dublin Open Space Initiative of 2014, and that its purpose is to maintain natural resource land use designations and prevent development beyond the ULL.

However, the NOP incorrectly states that Dublin's Sphere of Influence (SOI) encompasses the Alameda County portion of the study area. In fact, Dublin's SOI overlaps with the city limits and east-side ULL, and therefore excludes the Alameda County portion of the study area (see Dublin General Plan Figure 3-1 dated October 6<sup>th</sup> 2015). We suggest that the City correct this error in the EIR.



In addition, Alameda County staff have confirmed that the ‘Major Public’ designation that the NOP shows in the southeast corner of the Doolan Canyon area is an error. Apparently, the designation of some slivers of parcels along I-580 that are owned by Caltrans was changed to ‘Major Public’ to reflect their ownership. The portion of land in question was inadvertently included, with the correct designation being ‘Large Parcel Agriculture.’ We suggest that the City contact Alameda County Planning staff for further clarification, and that this error be corrected in the EIR.

## Potential Wetlands Impacts

Just south of the proposed conceptual alignment for the Project (see NOP Figure 1), to the east and north of Croak Rd., lie an area of vernal pool wetlands (see Figure 1 below).



Figure 1. Satellite image of wetlands east and north of Croak Rd., just east of Fallon Rd. The wetlands lie just south of the Project conceptual alignment.

These wetlands are a special feature of the Livermore Valley. As the East Alameda County and numerous peer-reviewed scientific publications make clear, vernal pools are an extremely important habitat for rare and endangered plant and animal species. However, most of this habitat (perhaps as much as 90% or greater) has disappeared in California, and losses continue.

The EIR should provide a full and detailed explanation of Project impacts to these wetlands, as well as details about the wetlands themselves in the Biological Resources section of the EIR. Other sections such as Hydrology and Water Quality may also be relevant. In addition, if the Project alignment is found to impact the wetlands, an alternative alignment should be considered and potentially adopted. This could be part of the EIR alternatives analysis.

We note that the parcel of these wetlands is designated as General Commercial. If and when proposals for development of this area are considered, we strongly encourage the City to consider proposals that avoid this rare and extremely biodiverse habitat.

Regards,

Juan Pablo Galván  
Land Use Manager

From: [william G. Hoppes](#)  
To: [Marissa Clevenger](#)  
Subject: Comments On Dublin Blvd. extension scoping  
Date: Thursday, June 15, 2017 11:02:20 AM

---

Thank you for the opportunity to comment on the Dublin Blvd scoping on the planned EIR. The Ohlone Audubon Society serves southern and eastern Alameda County and provides conservation and environmental advocacy towards the protection of valuable habitat for birds and other native species throughout the county. Our main comment regarding scoping of the EIS revolves around the list of "key issues". As outlined at the scoping meeting, these included:

Air quality and greenhouse gases  
Biological and cultural resources  
Transportation and traffic.

While we agree that these are important issues and should be considered, we do not view it as complete. As I am sure you are aware, the completion of the Dublin extension and the zoning changes and general plan amendments it will require will have important implications on development north of I580 and the efforts to protect a permanent barrier of open space between Dublin and Livermore. We do not see how the EIS can be certified as complete by Dublin, Livermore and Alameda County agencies unless it discusses the impact of this project on development and open space protection north of I580. We urge you to include this issue in the list of key topics and evaluate it fully in the EIS.

Thank you

William G. Hoppes  
President, Ohlone Audubon Society

**From:** [Ramirez, Jannette P@DOT](mailto:Ramirez_Jannette_P@DOT)  
**To:** [Marissa Clevenger](mailto:Marissa_Clevenger)  
**Cc:** [Maurice, Patricia@DOT](mailto:Maurice_Patricia@DOT); [State.Clearinghouse@opr.ca.gov](mailto:State.Clearinghouse@opr.ca.gov)  
**Subject:** Caltrans Comment Letter for the Dublin Boulevard-North Canyons Parkway Extension Project- NOP  
**Date:** Friday, June 16, 2017 11:31:19 AM  
**Attachments:** [ALA580GTS-NOP-Dublin Boulevard-North Canyons Parkway Extension Project-20170616.pdf](#)

---

Good morning Mr. Khan:

Please find attached a soft copy of the Caltrans comment letter regarding the Dublin Boulevard-North Canyons Parkway Extension Project Notice of Preparation. The original letter has been faxed to you at (925) 829-9248.

Thank you for including Caltrans in the environmental review process. Should you have any questions regarding this letter or require any additional information, please feel free to contact me at (510) 286-5535 or [jannette.ramirez@dot.ca.gov](mailto:jannette.ramirez@dot.ca.gov).

Sincerely,

Jannette Ramirez

Associate Transportation Planner

Local Development - Intergovernmental Review

California Department of Transportation, District 4

111 Grand Avenue, MS 10D

Oakland, CA 94612

(510) 286-5535 office (510) 286-5559 fax



**DEPARTMENT OF TRANSPORTATION**

DISTRICT 4

OFFICE OF TRANSIT AND COMMUNITY PLANNING

P.O. BOX 23660, MS-10D

OAKLAND, CA 94623-0660

PHONE (510) 286-5528

FAX (510) 286-5559

TTY 711

www.dot.ca.gov

Making Conservation  
a California Way of Life

June 16, 2017

SCH # 2017052047

GTS # 04-ALA-2017-00151

ALA580GTS

Obaid Khan  
Planning Department  
City of Dublin  
100 Civic Plaza  
Dublin, CA 94568

**Dublin Boulevard-North Canyons Parkway Extension Project- Notice of Preparation**

Dear Mr. Khan:

Thank you for including the California Department of Transportation (Caltrans) in the environmental review process for the above referenced project. In tandem with the Metropolitan Transportation Commission's (MTC) Sustainable Communities Strategy (SCS), the Caltrans *Strategic Management Plan 2015-2020* includes targets to reduce Vehicle Miles Travelled (VMT), in part, by tripling bicycle and doubling both pedestrian and transit travel by 2020. Our comments are based on the Notice of Preparation (NOP). Additional comments may be forthcoming pending final review.

***Project Understanding***

The City of Dublin (City), in coordination with the City of Livermore and Alameda County, proposes the extension of Dublin Blvd to North Canyons Parkway. The project is considered in their respective planning documents, as well as identified in the Plan Bay Area and Alameda Countywide Transportation Plan (Regional Transportation Plan ID# 21473).

***Lead Agency***

As the Lead Agency, the City of Dublin is responsible for all project mitigation, including any needed improvements to the State Transportation Network (STN). The project's fair share contribution, financing, scheduling, implementation responsibilities and lead agency monitoring should be fully discussed for all proposed mitigation measures.

***Multimodal Planning***

From Caltrans' *Smart Mobility 2010: A Call to Action for the New Decade*, the project site is identified as **Place Type 4: Suburban Communities** (Neighborhoods) where location efficiency factors, such as community design, are weak or moderate and regional accessibility varies. Given the project is an important road connection between the Town Center Priority Development Area (PDA) and the Isabel Avenue/BART Station Planning Area PDA, the project should ensure the

Mr. Khan, City of Dublin  
June 16, 2017  
Page 2

necessary pedestrian, bicycle, and transit improvements are made across the extension of Dublin Boulevard. The dedicated bike lane on Dublin Boulevard should continue to North Canyons Parkway with the extension.

### ***Travel Demand Analysis***

Please submit a travel demand analysis that provides VMT analysis resulting from the proposed project. With the enactment of Senate Bill (SB) 743, Caltrans is focusing on transportation infrastructure that supports smart growth and efficient development to ensure alignment with State policies through the use of efficient development patterns, innovative travel demand reduction strategies, multimodal improvements, and VMT as the primary transportation impact metric. Please ensure that the travel demand analysis includes:

- A vicinity map, regional location map, and site plan clearly showing project access in relation to the STN. Ingress and egress for all project components should be clearly identified. Clearly identify the State right-of-way (ROW). Project driveways, local roads and intersections, car/bike parking, and transit facilities should be mapped.
- A VMT analysis pursuant to the City's guidelines or, if the City has no guidelines, the Office of Planning and Research's Draft Guidelines. Projects that result in automobile VMT per capita greater than 15% below existing (i.e. baseline) city-wide or regional values for similar land use types may indicate a significant impact. If necessary, mitigation for increasing VMT should be identified. Mitigation should support the use of transit and active transportation modes. Potential mitigation measures that include the requirements of other agencies such as Caltrans are fully enforceable through permit conditions, agreements, or other legally-binding instruments under the control of the City.
- A schematic illustration of walking, biking and auto conditions along the proposed roadway segment and nearby study area roadways. Potential issues for all road users should be identified and fully mitigated.
- The project's primary and secondary effects on pedestrians, bicycles, disabled travelers and transit performance should be evaluated, including countermeasures and trade-offs resulting from mitigating VMT increases. Access to pedestrians, bicycle, and transit facilities must be maintained.

### ***Encroachment Permit***

Please be advised that any work or traffic control that encroaches onto the State right-of-way (ROW) requires an Encroachment Permit that is issued by Caltrans. Traffic-related mitigation measures should be incorporated into the construction plans prior to the encroachment permit process. To apply, a completed Encroachment Permit application, the adopted environmental document, and five (5) sets of plans clearly indicating State ROW must be submitted to the address below. Traffic-related mitigation measures should be incorporated into the construction plans prior to the encroachment permit process.

Mr. Khan, City of Dublin  
June 16, 2017  
Page 3

David Salladay, District Office Chief  
Office of Permits, MS 5E  
California Department of Transportation, District 4  
P.O. Box 23660  
Oakland, CA 94623-0660

See the following website for more information:

<http://www.dot.ca.gov/trafficops/ep/index.html>

Thank you again for including Caltrans in the environmental review process. Should you have any questions regarding this letter, please contact Jannette Ramirez at 510-286-5535 or [jannette.ramirez@dot.ca.gov](mailto:jannette.ramirez@dot.ca.gov).

Sincerely,



PATRICIA MAURICE  
District Branch Chief  
Local Development - Intergovernmental Review

c: State Clearinghouse

**From:** [Kristi Marleau](#)  
**To:** [Marissa Clevenger](#)  
**Subject:** Dublin Blvd/North Canyons Parkway Extension Project  
**Date:** Monday, June 19, 2017 1:36:35 PM

---

Hello Marissa,

I would like to be added to the project's email list. I am particularly interested in the planned bike connection from Dublin to Livermore. I am hoping to see Dublin and Livermore add protected bike lanes on this connection.

Thank you,  
Kristi Marleau



Edmund G. Brown Jr.  
Governor

STATE OF CALIFORNIA Letter 26  
Governor's Office of Planning and Research  
State Clearinghouse and Planning Unit



Ken Alex  
Director

Notice of Preparation

May 18, 2017

RECEIVED

MAY 24 2017

PUBLIC WORKS

To: Reviewing Agencies

Re: Dublin Boulevard-North Canyons Parkway Extension Project  
SCH# 2017052047

Attached for your review and comment is the Notice of Preparation (NOP) for the Dublin Boulevard-North Canyons Parkway Extension Project draft Environmental Impact Report (EIR).

Responsible agencies must transmit their comments on the scope and content of the NOP, focusing on specific information related to their own statutory responsibility, within 30 days of receipt of the NOP from the Lead Agency. This is a courtesy notice provided by the State Clearinghouse with a reminder for you to comment in a timely manner. We encourage other agencies to also respond to this notice and express their concerns early in the environmental review process.

Please direct your comments to:

Obaid Khan  
City of Dublin  
100 Civic Plaza  
Dublin, CA 94568

with a copy to the State Clearinghouse in the Office of Planning and Research. Please refer to the SCH number noted above in all correspondence concerning this project.

If you have any questions about the environmental document review process, please call the State Clearinghouse at (916) 445-0613.

Sincerely,

Scott Morgan  
Director, State Clearinghouse

Attachments  
cc: Lead Agency

**Document Details Report  
State Clearinghouse Data Base**

**SCH#** 2017052047  
**Project Title** Dublin Boulevard-North Canyons Parkway Extension Project  
**Lead Agency** Dublin, City of

---

**Type** NOP Notice of Preparation

**Description** The city, in coordination with the city of Livermore and Alameda county, proposes to extend Dublin Blvd to North Canyons Pkwy. The project is considered in their respective planning documents, as well as identified in the Plan Bay Area and Alameda Countywide Transportation Plan (Regional Transportation Plan ID# 21473).

---

**Lead Agency Contact**

**Name** Obaid Khan  
**Agency** City of Dublin  
**Phone** 925-833-6630 **Fax**  
**email**  
**Address** 100 Civic Plaza  
**City** Dublin **State** CA **Zip** 94568

---

**Project Location**

**County** Alameda  
**City** Dublin  
**Region**  
**Cross Streets** existing Dublin Blvd and North Canyons Pkwy  
**Lat / Long** 37° 42' 14.18" N / 121° 50' 15.55" W  
**Parcel No.**  
**Township** 3S **Range** 1E **Section** **Base**

---

**Proximity to:**

**Highways**  
**Airports** Livermore Municipal  
**Railways**  
**Waterways**  
**Schools**  
**Land Use** LU: Surrounding general area include commercial, business park, resource management, and open space

---

**Project Issues** Agricultural Land; Air Quality; Archaeologic-Historic; Biological Resources; Cumulative Effects; Flood Plain/Flooding; Geologic/Seismic; Growth Inducing; Landuse; Noise; Population/Housing Balance; Public Services; Recreation/Parks; Soil Erosion/Compaction/Grading; Solid Waste; Toxic/Hazardous; Traffic/Circulation; Vegetation; Water Quality; Water Supply; Wetland/Riparian; Aesthetic/Visual

---

**Reviewing Agencies** Resources Agency; Department of Parks and Recreation; Department of Water Resources; Department of Fish and Wildlife, Region 3; Native American Heritage Commission; Caltrans, Division of Aeronautics; California Highway Patrol; Caltrans, District 4; Air Resources Board, Transportation Projects; Regional Water Quality Control Board, Region 2

---

**Date Received** 05/18/2017 **Start of Review** 05/18/2017 **End of Review** 06/16/2017

---

# Notice of Completion & Environmental Document Transmittal

Mail to: State Clearinghouse, P.O. Box 3044, Sacramento, CA 95812-3044 (916) 445-0613  
 For Hand Delivery/Street Address: 1400 Tenth Street, Sacramento, CA 95814

2017052047

Project Title: Dublin Boulevard-North Canyons Parkway Extension Project

Lead Agency: City of Dublin

Contact Person: Obaid Khan

Mailing Address: 100 Civic Plaza

Phone: 925-833-6630

City: Dublin

Zip: 94568

County: Alameda

Project Location: County: Alameda

City/Nearest Community: Dublin

Cross Streets: existing Dublin Blvd and North Canyons Parkway

Zip Code: 94568

Longitude/Latitude (degrees, minutes and seconds): 37 ° 42 ' 14.18" N / 121 ° 50 ' 15.55" W Total Acres: \_\_\_\_\_

Assessor's Parcel No.: \_\_\_\_\_ Section: \_\_\_\_\_ Twp.: 3 South Range: 1 East Base: \_\_\_\_\_

Within 2 Miles: State Hwy #: \_\_\_\_\_ Waterways: \_\_\_\_\_

Airports: Livermore Municipal Airport

Railways: \_\_\_\_\_ Schools: \_\_\_\_\_

## Document Type:

CEQA: ☒ NOP ☐ Draft EIR ☐ NEPA: ☐ NOI Other: ☐ Joint Document  
☐ Early Cons ☐ Supplement/Subsequent EIR ☐ EA ☐ Final Document  
☐ Neg Dec (Prior SCH No.) \_\_\_\_\_ ☐ Draft EIS ☐ Other: \_\_\_\_\_  
☐ Mit Neg Dec Other: \_\_\_\_\_ ☐ FONSI

## Local Action Type:

☐ General Plan Update ☐ Specific Plan ☐ Rezone ☐ Annexation  
☐ General Plan Amendment ☐ Master Plan ☐ Prezone ☐ Redevelopment  
☐ General Plan Element ☐ Planned Unit Development ☐ Use Permit ☐ Coastal Permit  
☐ Community Plan ☐ Site Plan ☐ Land Division (Subdivision, etc.) ☒ Other: Roadway extension

## Development Type:

☐ Residential: Units \_\_\_\_\_ Acres \_\_\_\_\_ ☒ Transportation: Type Roadway extension  
☐ Office: Sq.ft. \_\_\_\_\_ Acres \_\_\_\_\_ Employees \_\_\_\_\_ ☐ Mining: Mineral \_\_\_\_\_  
☐ Commercial: Sq.ft. \_\_\_\_\_ Acres \_\_\_\_\_ Employees \_\_\_\_\_ ☐ Power: Type \_\_\_\_\_ MW  
☐ Industrial: Sq.ft. \_\_\_\_\_ Acres \_\_\_\_\_ Employees \_\_\_\_\_ ☐ Waste Treatment: Type \_\_\_\_\_ MGD  
☐ Educational: \_\_\_\_\_ ☐ Hazardous Waste: Type \_\_\_\_\_  
☐ Recreational: \_\_\_\_\_ ☐ Other: \_\_\_\_\_  
☐ Water Facilities: Type \_\_\_\_\_ MGD

## Project Issues Discussed in Document:

☒ Aesthetic/Visual ☐ Fiscal ☒ Recreation/Parks ☒ Vegetation  
☒ Agricultural Land ☒ Flood Plain/Flooding ☐ Schools/Universities ☒ Water Quality  
☒ Air Quality ☐ Forest Land/Fire Hazard ☐ Septic Systems ☒ Water Supply/Groundwater  
☒ Archeological/Historical ☐ Geologic/Seismic ☐ Sewer Capacity ☒ Wetland/Riparian  
☒ Biological Resources ☐ Minerals ☒ Soil Erosion/Compaction/Grading ☒ Growth Inducement  
☐ Coastal Zone ☒ Noise ☒ Solid Waste ☒ Land Use  
☐ Drainage/Absorption ☒ Population/Housing Balance ☒ Toxic/Hazardous ☒ Cumulative Effects  
☐ Economic/Jobs ☒ Public Services/Facilities ☒ Traffic/Circulation ☐ Other: \_\_\_\_\_

## Present Land Use/Zoning/General Plan Designation:

Land use designations surrounding general area include commercial, business park, resource management, and open space

Project Description: (please use a separate page if necessary)

The City of Dublin, in coordination with the City of Livermore and Alameda County, proposes to extend Dublin Blvd to North Canyons Parkway. The project is considered in their respective planning documents, as well as identified in the Plan Bay Area and Alameda Countywide Transportation Plan (Regional Transportation Plan ID# 21473).







## Public Scoping Meeting

Wednesday, May 31, 2017 – 6:00 PM

Dublin City Hall Regional Meeting Room  
100 Civic Plaza, Dublin, CA 94568

### DUBLIN BOULEVARD - NORTH CANYONS PARKWAY EXTENSION PROJECT

## COMMENT CARD

**Comments must be submitted no later than Monday June 19, 2017 by 5:00 p.m.**  
Comment forms may be deposited in the comment box tonight or mailed to:

#### Dublin Boulevard - North Canyons Parkway Extension Project

City of Dublin  
100 Civic Plaza  
Dublin, CA, 94568  
Attn: Marissa Clevenger, Office Assistant II  
Phone: 925-833-6630; Fax: (925) 829-9248  
Email: [marissa.clevenger@dublin.ca.gov](mailto:marissa.clevenger@dublin.ca.gov)

Name: JOE WASIK Date: 5-31-2017

Affiliation (if applicable): SELF

Address: \_\_\_\_\_

**Comment/Question:** Please explain the impact of  
BART on the Dublin Blvd project, particularly on  
traffic impact, parking impact (parking @ stations is  
always too small) and corridor (now that I-580 median  
is used up for carpools).

## Public Scoping Meeting

Wednesday, May 31, 2017 – 6:00 PM

Dublin City Hall Regional Meeting Room  
100 Civic Plaza, Dublin, CA 94568

### DUBLIN BOULEVARD - NORTH CANYONS PARKWAY EXTENSION PROJECT

## COMMENT CARD

Comments must be submitted no later than Monday June 19, 2017 by 5:00 p.m.  
Comment forms may be deposited in the comment box tonight or mailed to:

#### Dublin Boulevard - North Canyons Parkway Extension Project

City of Dublin  
100 Civic Plaza  
Dublin, CA, 94568  
Attn: Marissa Clevenger, Office Assistant II  
Phone: 925-833-6630; Fax: (925) 829-9248  
Email: [marissa.clevenger@dublin.ca.gov](mailto:marissa.clevenger@dublin.ca.gov)

Name: Richard Guarienti Date: 5-31-17

Affiliation (if applicable): Resident

Address: \_\_\_\_\_

Comment/Question: \_\_\_\_\_

1. Any issues with current property owners for right of way? Easements?
2. Conduct EIR to widest footprint (e.g. 6 lanes + bike/ped path) even though original construction may be only 4 lanes +, Saves redo of EIR
3. Suggest separate bike/ped pathway so that pedestrians not walking in lane next to traffic.

Please continue on back if necessary.

## Public Scoping Meeting

Wednesday, May 31, 2017 – 6:00 PM

Dublin City Hall Regional Meeting Room  
100 Civic Plaza, Dublin, CA 94568

### DUBLIN BOULEVARD - NORTH CANYONS PARKWAY EXTENSION PROJECT

## COMMENT CARD

Comments must be submitted no later than Monday June 19, 2017 by 5:00 p.m.  
Comment forms may be deposited in the comment box tonight or mailed to:

#### Dublin Boulevard - North Canyons Parkway Extension Project

City of Dublin  
100 Civic Plaza  
Dublin, CA, 94568  
Attn: Marissa Clevenger, Office Assistant II  
Phone: 925-833-6630; Fax: (925) 829-9248  
Email: [marissa.clevenger@dublin.ca.gov](mailto:marissa.clevenger@dublin.ca.gov)

Name: STEPHEN A. REYNOLDS Date: 5/31/17

Affiliation (if applicable): KIER & WRIGHT CIVIL ENGINEERS, INC.

Address: \_\_\_\_\_

Comment/Question: \_\_\_\_\_

WE SUPPORT THE ROAD CONNECTION  
AND CONCUR WITH THE INFORMATION  
PRESENTED AT THE SCOPING MEETING.  
GOOD WORK!

## Public Scoping Meeting

Wednesday, May 31, 2017 – 6:00 PM

Dublin City Hall Regional Meeting Room  
100 Civic Plaza, Dublin, CA 94568

### DUBLIN BOULEVARD - NORTH CANYONS PARKWAY EXTENSION PROJECT

## COMMENT CARD

Comments must be submitted no later than Monday June 19, 2017 by 5:00 p.m.  
Comment forms may be deposited in the comment box tonight or mailed to:

#### Dublin Boulevard - North Canyons Parkway Extension Project

City of Dublin  
100 Civic Plaza  
Dublin, CA, 94568  
Attn: Marissa Clevenger, Office Assistant II  
Phone: 925-833-6630; Fax: (925) 829-9248  
Email: [marissa.clevenger@dublin.ca.gov](mailto:marissa.clevenger@dublin.ca.gov)

Name: Betsy Key Date: 5/31/17

Affiliation (if applicable): \_\_\_\_\_

Address: Dublin

Comment/Question: \_\_\_\_\_

This roadway is necessary. It is  
my hope that when they get to  
the construction phase a six lane  
roadway is built.

# Public Scoping Meeting

Letter 31

Wednesday, May 31, 2017 – 6:00 PM

Dublin City Hall Regional Meeting Room  
100 Civic Plaza, Dublin, CA 94568

## DUBLIN BOULEVARD - NORTH CANYONS PARKWAY EXTENSION PROJECT

### COMMENT CARD

Comments must be submitted no later than Monday June 19, 2017 by 5:00 p.m.  
Comment forms may be deposited in the comment box tonight or mailed to:

#### Dublin Boulevard - North Canyons Parkway Extension Project

City of Dublin  
100 Civic Plaza  
Dublin, CA, 94568  
Attn: Marissa Clevenger, Office Assistant II  
Phone: 925-833-6630; Fax: (925) 829-9248  
Email: [marissa.clevenger@dublin.ca.gov](mailto:marissa.clevenger@dublin.ca.gov)

Name: Solene Splendorio Date: 5-31-17  
Affiliation (if applicable): Innovation Tri-Valley Leadership Group (ITV)  
Address: \_\_\_\_\_

**Comment/Question:** ITV is a business leadership group representing businesses throughout the Tri-Valley. We represent dozens of major employers such as Chevron, GE, Lawrence Livermore Nat'l Lab and Sandia Nat'l Lab. ITV strongly supports the extension of Dublin Blvd to N. Canyon Pkwy. Circulation in infrastructure is vital to the economic vitality of the Tri-Valley. An east-west arterial north of I-580 in the Livermore Valley is long overdue. Secondary east-west access north of the freeway is required, especially in the event of public emergencies.

Please continue on back if necessary.

**From:** [Deanna Taylor](#)  
**To:** [Marissa Clevenger](#)  
**Subject:** Dublin Boulevard-North Canyons Parkway Extension Project - Comments  
**Date:** Friday, June 16, 2017 4:48:39 PM  
**Attachments:** [image001.png](#)

---

Hi Marissa,

I attended the Environmental Scoping Meeting on May 31, 2017 and I would like to submit comments regarding the 1) proposed new road, 2) bus transportation and 3)bike/walking/recreation routes.

- 1) I am very pleased that Dublin and Livermore are working together to close the gap, off the freeway, between the north side of 580.
- 2) I think more people would use the excellent rapid ride transit system if park and ride areas were spaced throughout the route area so people would have an easy access entry point into the bus system.

The primary concern I have is that there are no park and ride areas for people using the bus system Rapid Transit. The planning of the bus system does not allow entry point parking close to bus stops. Most people live too far to walk to the nearest bus stop. I think if park and ride areas were available to allow easy access to bus stations through the transit area more people would consider using the buses.

Highlighted in yellow is where my home is located near Ranier and the larger yellow area near East Stanley Blvd in Livermore where the closest available parking is located, as you can see it would be quite a long walk to my nearest bus station and the only available parking is within a residential area, parking here seems unfair to the local residents. Many people do park here to take the bus.



- 3) It would be safer to make a walk/bike/run area separate from the primary road. I like the way the planning was designed on the south side of the freeway from the Livermore Airport over to the outlet

mall and would like to see this on both sides of the freeway.

Thank you for considering my views.

Regards,

Deanna Taylor

From:  
To: Marissa Clevenger  
Cc: elizabeth.mcelligott@acgov.org  
Subject: Extended Scoping Comment Period, Dublin Blvd Extension  
Date: Sunday, June 18, 2017 8:47:00 AM

---

Re: Dublin Blvd- North Canyon Parkway Extension

Thank you for the opportunity to comment regarding the proposed extension of Dublin Blvd to join with North Canyon Parkway. I learned of this project recently through an article published in the Independent Newspaper.

I am writing in my capacity as Chair of the Alameda County Agricultural Advisory Committee (AAC). The role of the committee is described in County Administrative Ordinance:

"Chapter 2.122 - AGRICULTURAL ADVISORY COMMITTEE

2.122.020 - Purposes.

The purpose of the committee is to act as a technical advisory panel of experts to the board of supervisors and to other public agencies, including cities and districts, on matters involving the economic enhancement of agriculture and environmental conservation on applicable agricultural lands in Alameda County, and to implement the requirement of Measure D adopted by the electorate of Alameda County in 2000 calling for the periodic convening of an advisory panel of experts to make recommendations to enhance the economic viability of agriculture and ranching, and to minimize environmental impacts."

The county wide Measure that created the AAC was widely supported by the citizens of Dublin. The citizens of Dublin subsequently affirmed their commitment to County agricultural enhancement in 2014 when the City adopted an urban limit line to protect County lands from urban encroachment and development. The City of Livermore did the same in 2002 when the North Livermore Urban Growth Boundary Initiative was adopted by the City Council.

The proposed extension of Dublin Blvd to join with North Canyon Parkway may have significant impacts that are contrary to the agricultural enhancement and environmental conservation called for by Measure D. The proposed extension may also be contrary to the intent of urban limit lines established by the cities of Dublin and Livermore. I believe the AAC would have interest in participating in the scoping process to provide advice regarding these impacts and potential mitigation.

Our Committee does not have a meeting scheduled prior to the scoping comment deadline of June 19. However, we do have a special meeting planned for June 27. I request that you extend the scoping deadline to allow comment by the AAC at one of our public meetings. Please contact Assistant Planning Director Liz McElligott to arrange a presentation to the AAC.

Thank you,

Larry Gosselin DVM  
Chair  
Alameda County Agricultural Advisory Committee



From:  
 To: [Marissa Clevenger](#)  
 Subject: Scoping Comments re: Dublin Blvd Extension  
 Date: Sunday, June 18, 2017 12:25:04 PM

---

Good Day,

Thank you for the opportunity to provide scoping comments regarding the extension of Dublin Blvd to North Canyon Parkway. The following are my personal comments. They reflect my concerns as a working ranch owner and conservationist owning 142 acres directly affected by the environmental impacts of this project.

#### Comments

1) Problem: Scoping for this project was inadequate. There was no presentation to the Alameda County Agricultural Advisory Committee, or no notification to agricultural property owners in the area.

Solution: Extend the scoping period. Notify all property owners in the "A" District North of 580. Notify all agricultural organizations active in Alameda County.

2) Problem: This road extension is an urban development encroachment intended to benefit local and regional transportation serving the cities in the area as well as commuters travelling to destinations outside the county. In all ways it violates the intent of the urban limit lines established by Alameda County, the City of Livermore, and the city of Dublin.

Solution: The DEIR should list and summarize the intent and substance of Measures, Initiatives, and Ordinances that arose from efforts to establish a greenbelt between the cities of Livermore and Dublin.

3) Problem: The project invites local impacts from regional sources. Models for these types of impacts are already seen on and around rural roads in eastern and northern Alameda County.

Solution: The DEIR should address the impacts of regional growth on agricultural land use in Alameda County as well as a comprehensive mitigation strategy.

4) Problem: Many impacts are cumulative. This extension adds to the impacts of existing and future Dublin Blvd and N. Canyon Parkway projects improvements.

Solution: The DEIR should comprehensively address the cumulative impacts of prior, present and future extensions of urban roads into surrounding agricultural lands.

5) Agriculture in Alameda County has declined despite the establishment of Urban Limit Lines. The DEIR for projects typically uses a standardized Impacts Checklist that fails to recognize the culture of farming and ranching.

Solution: The Impacts Checklist should be modified to include the causes of the declining agricultural economy in Alameda County as well as mitigations that could enhance the agricultural economy. For example, despite extensive urban development at the fringes of the City of Livermore the wine industry has flourished and expanded. Mitigation that will do the same in the area north of 580 should be considered. Zoning restrictions alone do not enhance agriculture.

The fact that development has occurred in Dublin and N. Livermore without consideration of the cumulative impact on agriculture does not mean that future development should continue without mitigation. I encourage the DEIR for this project to be innovative and lay the foundation for a regional agricultural land use strategy that results in agricultural policies that support the agricultural economy.

Sincerely,  
 Larry Gosselin DVM



# United States Department of the Interior



In Reply Refer to:  
08ESMF00-  
2017-TA-2126

FISH AND WILDLIFE SERVICE  
Sacramento Fish and Wildlife Office  
2800 Cottage Way, Suite W-2605  
Sacramento, California 95825-1846

Letter 35

JUN 14 2017

RECEIVED

JUN 19 2017

PUBLIC WORKS

City of Dublin  
Attn: Obaid Khan, P.E.  
Transportation and Operations Manager  
100 Civic Plaza  
Dublin, California, 94568

Subject: Comments on the Notice of Preparation for the Dublin Boulevard-North Canyons  
Parkway Extension Project in Alameda County, California

Dear Mr. Khan:

This letter is in response to the Notice of Preparation for the Dublin Boulevard-North Canyons Parkway Extension Project in Alameda County, California. At issue are effects to the federally threatened California red-legged frog (*Rana draytonii*) and its critical habitat, the threatened Central California Distinct Population Segment of the California tiger salamander (*Ambystoma californiense*) (Central California tiger salamander), and the endangered Calliope silverspot butterfly (*Speyeria callippe callippe*). These comments are provided under the authority of the Endangered Species Act of 1973, as amended (16 U.S.C. 1531 *et seq.*) (Act), and in accordance with the implementing regulations pertaining to interagency cooperation (50 CFR 402).

### *Project Description*

The City of Dublin, in coordination with the City of Livermore and Alameda County, proposes to extend Dublin Boulevard to North Canyons Parkway. The project is considered in the two cities' respective planning documents, as well as identified in Plan Bay Area and Alameda Countywide Transportation Plan (Regional Transportation Plan ID# 21473). The project would establish a precise alignment for a roadway extension that would connect several Association of Bay Area Government's (ABAG) Priority Development Areas (PDA) within Dublin and Livermore. The project is proposed to complete the roadway connection along the north side of I-580 to facilitate the needs of the growing jobs and housing associated with ABAG PDA in the project vicinity.

### *Listed Species in the Planning Area*

The planning area contains annual grasslands interspersed with perennial and seasonal wetlands and contains suitable habitat for some of the listed species named above. There are documented occurrences of California red-legged frogs and California tiger salamanders in the project area and any seasonal waterbodies or upland habitat could be used by these species. Designated critical habitat unit CCS-2B for the California red-legged frog is part of the planning area and project activities will likely impact this unit. The planning area also contains a known population of Congdon's tarplant (one of seven known populations in east Alameda County). This plant is associated with alkaline or saline soils and take of individuals of this population may occur through construction activities. San Joaquin spearscale is another plant that is considered endangered by the California Native Plant Society and protected by the state. It is associated with alkaline or saline soils as well and may be present in the project area.

*Comments*

Specific to federally listed species, the implementation of the proposed road extension is likely to result in take of the federally listed species and result in the loss and/or degradation of their habitat.

The project area falls within the boundary of the East Alameda County Conservation Strategy (EACCS) on which the City of Dublin and Alameda County were authors and are participants. On May 31, 2012 the U.S. Fish and Wildlife Service (Service) issued a programmatic biological opinion for all activities within the EACCS boundary (*Programmatic Biological Opinion for the U.S. Army Corps of Engineers (Corps) Permitted Projects Utilizing the East Alameda County Conservation Strategy that May Affect Federally Listed Species in East Alameda County, California (Service File No. 08ESMF00-2012-F-0092-1)*). As per our discussion at a meeting between the Service, the City of Dublin, and the California Department of Fish and Wildlife on April 28, 2017, the City agreed to use the EACCS to minimize and mitigate for any adverse effects to listed species and their habitats. According to the EACCS, covered species with potential habitat within the planning area include: Calliope silverspot butterfly, California red-legged frog, California tiger salamander, Congdon's tarplant (*Centromadia parryi* ssp. *congdonii*) and San Joaquin spearscale (*Extriplex joaquinana*). The Calliope silverspot butterfly could use the grassland area in the planning area for foraging, egg-laying, and larval development, if its host-plant is present, but since this species prefers hillside slopes and hill tops, it is unlikely they would be present in the area since it is located so far into the Livermore Valley. Please consider adverse effects to these species and their habitat in your analysis.

Of primary concern is that the project will essentially isolate the land between the new road and I-580 from California tiger salamander and California red-legged frog breeding sites to the north. However, because the lands between the new road and I-580 are slated to be developed in the future, incorporating wildlife crossings and directional fencing in the new road would not benefit listed species or mitigate for adverse effects to species movement. Culverts for drainages crossing under the road may serve as interim movement pathways to some extent, but the road would not need to incorporate crossings specifically for wildlife because it would likely be unnecessary once the area is developed. However, the Service would like to see the Cottonwood Creek crossing be a free-span bridge that would allow for wildlife to move freely between Alameda County areas north and south of the proposed roadway along the creek.

The Service requests that future impacts resulting from projects that would be served by the extension should be addressed in a cumulative impact statement and analysis in the Dublin Boulevard Extension Environmental Impact Report (EIR). The Service is concerned that the developments that occur along the proposed road expansion will degrade quality habitat of the aforementioned listed species and then, future projects would mitigate for habitat that has lost value as a result of this project. Because this habitat quality loss is an indirect effect of the roadway construction, the City agreed (at the April 28, 2017 meeting) that the Biological Assessment submitted to the Service and any CEQA documents written for this project would provide a requirement in the mitigation measures that any developments facilitated by or surrounding the road expansion will mitigate based on EACCS scores of pre-road construction habitat quality. Mitigation measures in the EIR should state clearly that such future developments shall comply with the EACCS and be consistent with the mitigation measures (most importantly, the pre-road construction habitat quality mitigation requirement) adopted by the City of Dublin, as approved in the Final EIR for the proposed project.

Mr. Khan

3

Please address any questions or concerns regarding these comments and recommendations to Claudia Funari or Ryan Olah, Coast Bay Division Chief, at the letterhead address, telephone (916) 414-6646, or electronic mail at [Claudia\\_Funari@fws.gov](mailto:Claudia_Funari@fws.gov) or [Ryan\\_Olah@fws.gov](mailto:Ryan_Olah@fws.gov).

Sincerely,

A handwritten signature in black ink, appearing to read "Ryan Olah", with a stylized flourish at the end.

Ryan Olah,  
Coast Bay Division Chief

cc:

Marcia Grefsrud, California Department of Fish and Wildlife, Napa, CA

**From:** [Karen Whitestone](#)  
**To:** [Marissa Clevenger](#)  
**Cc:** [conservation-chair@ebcnps.org](mailto:conservation-chair@ebcnps.org)  
**Subject:** Comments on Dublin Boulevard-North Canyons Parkway Extension Project  
**Date:** Monday, June 19, 2017 12:35:07 PM  
**Attachments:** [DublinBlvdNOP-comments-20170619.pdf](#)

---

Hello Ms. Melissa Clevenger and Mr. Obaid Kahn,

Please accept the attached comments for the Dublin Boulevard extension project, submitted by the East Bay Chapter of the California Native Plant Society. Please contact me to confirm receipt of our comments at your earliest convenience. Thank you.

Sincerely,

Karen Whitestone

--

Karen Whitestone  
Conservation Analyst

California Native Plant Society, East Bay Chapter  
PO Box 5597 Elmwood Station  
Berkeley CA 94705  
510-734-0335  
[www.ebcnps.org](http://www.ebcnps.org)  
<http://ebcnps.wordpress.com>

"dedicated to the conservation of native flora"



# CALIFORNIA NATIVE PLANT SOCIETY

East Bay Chapter, [www.ebcnps.org](http://www.ebcnps.org)  
PO Box 5597, Elmwood Station, Berkeley, CA 94705

June 19, 2017

City of Dublin  
100 Civic Plaza  
Dublin CA 94568  
Attn: Marissa Clevenger, Office Assistant II  
Attn: Obaid Khan, Transportation & Operations Manager

*Submitted by email to:* [marissa.clevenger@dublin.ca.gov](mailto:marissa.clevenger@dublin.ca.gov)

**RE: Notice of Preparation of an Environmental Impact Report and Notice of Public Scoping Meeting for the Dublin Boulevard-North Canyons Parkway Extension Project**

Dear Mr. Obaid Khan:

The following are the comments of the California Native Plant Society, East Bay Chapter (EBCNPS) in regard to the Notice of Preparation (NOP) of an Environmental Impact Report (EIR) for the proposed Dublin Boulevard-North Canyons Parkway Extension Project.

The California Native Plant Society (CNPS) is a non-profit organization of more than 10,000 laypersons and professional botanists organized into 34 chapters throughout California. The Society's mission is to increase the understanding and appreciation of California's native plants and to preserve them in their natural habitat through scientific activities, education, and conservation. Pursuant to the mission of protecting California's native flora and vegetation, EBCNPS submits the following comments:

The "currently undeveloped open space lands" located in the study area likely contain high biodiversity, including rare plants (special-status plants) and rare plant communities (sensitive natural communities). The proposed project would have significant impacts on these resources.

The NOP states that "ecologists will conduct reconnaissance-level field surveys of the project area to document the biological conditions." A reconnaissance-level survey is an inappropriately low survey standard, given known high biodiversity in the region.

*Protecting California's native flora since 1965*

We recommend performing full, protocol-level surveys of the study area, which is the preferred approach for survey and assessment for special-status plants and animals in California, according to the Department of Fish and Wildlife (2009): “Surveys should be comprehensive over the entire site, including areas that will be directly or indirectly impacted by the project.” Plant surveys must be seasonally appropriate and floristic in nature.

The California Environmental Quality Act (CEQA) requires assessment of all CNPS Rank 1 and 2 plants, which are considered rare, threatened or endangered, or even presumed extirpated, within California. Impacts on these special-status plants are potentially significant [CEQA Guidelines §15125 (c) and §15380)]. In addition, unusual and significant plants may have local or regional significance, which is another potential impact requiring evaluation (CEQA Appendix G, Environmental Checklist). All special-status plants as well as locally rare plants, are likely indicative of sensitive natural communities protected by California Department of Fish and Wildlife (CDFW).

We recommend consultation with existing databases of special-status plant species and sensitive natural communities, including:

- California Department of Fish and Wildlife
  - California Natural Diversity Database (CNDDDB)
  - Biogeographic Information and Observation System (BIOS)
  - Vegetation Classification and Mapping Program (VegCAMP) for Natural Communities
  - *Protocols for Surveying and Evaluating Impacts to Special Status Native Plant Populations and Natural Communities* (Dept. of Fish and Game, 11/2009)
- California Native Plant Society
  - Inventory of Rare and Endangered Plants of California
  - *Manual of California Vegetation*, 2<sup>nd</sup> ed. (Sawyer et al., 2009)
- California Native Plant Society, East Bay Chapter
  - *Guidebook to Botanical Priority Protection Areas of the East Bay* (Bartosh et al., 2010)
  - *Database of Rare, Unusual and Significant Plants of Alameda and Contra Costa Counties* (Lake, 2016)

The study area is in close proximity to regions conserved due to their high biodiversity and rich natural resource values. The planners should consult conservation plans and resource publications from Contra Costa Local Agency Formation Commission, Eastern Alameda County Conservation Strategy, Tri-Valley Conservancy, and the East Bay Regional Park District. In addition, the study area should be investigated for natural resources that occur in common with the following conserved areas:

*Protecting California's native flora since 1965*

- Springtown Preserve (Garaventa Wetlands) in Livermore
- Brushy Peak Regional Park in Livermore
- Doolan Canyon Regional Preserve in Dublin

An incomplete list of protected sensitive natural communities which may exist in the study area include: wetlands, vernal pools, alkali sink ecosystems, sandstone rock outcrops, and Northern claypan vernal pools. Vernal pools are an especially sensitive type of wetland and critical habitat for many special-status vernal pool plants and crustaceans. Vernal pools in the study area may have unique attributes specific to the Livermore Valley area. Also, note that vernal pools may or may not contain a large number of special-status species, so their overall floristic composition may be a helpful measure because they are still a valuable and protected ecosystem.

The study area is located in a region that our organization recognizes as a Botanical Priority Protection Area (BPPA), one of fifteen areas in the East Bay with high probability for containing rare and locally rare native plants. BPPAs are defined as areas that are not yet conserved but do contain unusual soil types that are disappearing in the East Bay, and have many historic or current occurrence records for native plants that are rare, locally rare, or unusual. The East Dublin & Tassajara BPPA is characterized by sensitive natural communities such as alkaline habitats (grasslands, scrubs, wetlands, swales) and Northern claypan vernal pools; as well as rare and distinctive plants such as Congdon's tarplant (*Centromadia parryi* ssp. *congdonii*, 1B.1), San Joaquin spearscale (*Extriplex joaquinana*, 1B.2), white-headed navarretia (*Navarretia leucocephala* ssp. *leucocephala*, A2), Semaphore grass (*Pleuropogon californicus* var. *californicus*, B), saline clover (*Trifolium hydrophilum*, 1B.2), and yellow owl's clover (*Triphysaria versicolor* ssp. *faucibarbata*, A2).

As an organization, we recommend avoidance of impacts to valuable natural resources on (or near) the project site, followed by robust mitigation proposals for any potential impacts. A new road or highway alignment means that the EIR should also consider the growth-inducing impacts of this project on special-status plants and sensitive natural communities.

We were involved with successful passage of the 2014 Dublin Open Space Initiative and looks forward to continued involvement as an interested local stakeholder organization.

If you have any questions, please contact me at [conservation@ebcnps.org](mailto:conservation@ebcnps.org) or at 510-734-0335.

Sincerely,



Karen Whitestone  
Conservation Analyst  
East Bay California Native Plant Society

*Protecting California's native flora since 1965*