

April 22, 2019

Mr. Todd Pendergrass
Chandler Aggregates, Inc.
P.O. Box 77850
Corona, CA 92877

SUBJECT: GILMAN SPRINGS MINE SUPPLEMENTAL AIR QUALITY AND GREENHOUSE GAS ASSESSMENT

Dear Mr. Todd Pendergrass:

This letter serves as a supplement to the Gilman Springs Mine Air Quality Impact Analysis (June 6, 2018) and Gilman Springs Mine Greenhouse Gas Impact Analysis (June 25, 2018) (referred to as “AQIA and “GHGA”, respectively). Specifically, this focused assessment evaluates the Project-related impacts based on the revised limits of disturbance for mining activity. Although the limits of the mining have changed, there are no changes to the proposed mining operations and resulting daily and annual tonnage (see Exhibit A). As such, no changes to the equipment and vehicle trips evaluated in the AQIA and GHGA are expected to occur.

MINING AREA LIMITS

Exhibit A shows the previous physical disturbance limits used in the analysis provided in the AQIA and GHGA, in addition to the proposed physical disturbance limits for this Supplemental Air Quality and Greenhouse Gas Assessment. Based on the proposed physical disturbance limits, Project operational and construction sources are expected to be located at the same or greater distances than those originally analyzed in the AQIA and GHGA. As such, impacts related to Project operational and construction impacts would be equal to or less than those identified in the AQIA and GHGA. For comparison, the distances to the nearby receiver locations under with the previous and proposed physical disturbance limits are provide below:

R1:

- Previous Distance used in the AQIA: approximately 7,656 feet
- New Distance with Proposed Limits: approximately 7,950 feet

R2:

- Previous Distance used in the AQIA: approximately 3,196 feet
- New Distance with Proposed Limits: approximately 3,600 feet

R3:

- Previous Distance used in the AQIA: approximately 2,400 feet

Mr. Todd Pendergrass
Chandler Aggregates, Inc.
April 22, 2019
Page 2

- New Distance with Proposed Limits: approximately 2,400 feet

R4:

- Previous Distance used in the AQIA: approximately 6,170 feet
- New Distance with Proposed Limits: approximately 6,170 feet

CONCLUSIONS

This Supplemental Air Quality and Greenhouse Gas Assessment indicates that the Gilman Springs Mine Project would result in the same impacts as previously identified in the AQIA and GHGA. If you have any questions, please contact Haseeb Qureshi directly at (949) 366-5987.

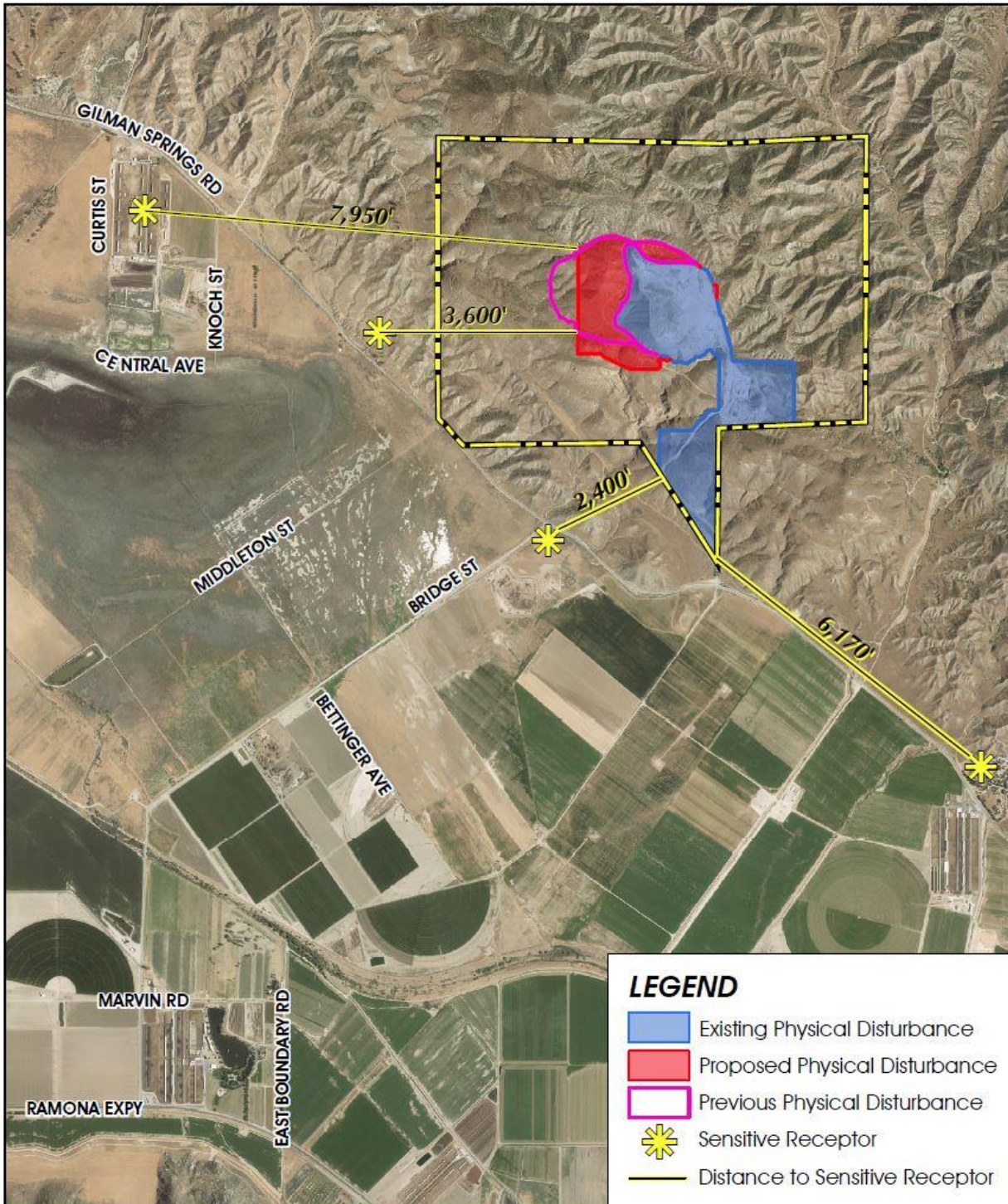
Respectfully submitted,

URBAN CROSSROADS, INC.



Haseeb Qureshi
Senior Associate

EXHIBIT A: PREVIOUS AND PROPOSED LIMITS OF PHYSICAL DISTURBANCE



Source: Surface Mining Permit No. 159R2 Environmental Impact Report.

This page intentionally left blank