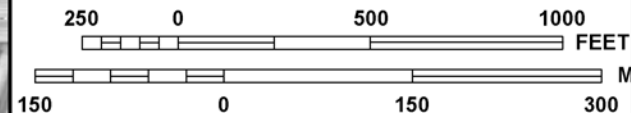


Appendix I FEMA FIRM Maps

This page intentionally left blank



MAP SCALE 1" = 500'



NFIP

PANEL 0277J

FIRM

FLOOD INSURANCE RATE MAP

ORANGE COUNTY,
CALIFORNIA
AND INCORPORATED AREAS

PANEL 277 OF 539

(SEE MAP INDEX FOR FIRM PANEL LAYOUT)

CONTAINS:

COMMUNITY	NUMBER	PANEL	SUFFIX
ORANGE COUNTY	060212	0277	J
SANTA ANA, CITY OF	060232	0277	J
TUSTIN, CITY OF	060235	0277	J

Notice to User: The Map Number shown below should be used when placing map orders; the Community Number shown above should be used on insurance applications for the subject community.



MAP NUMBER
06059C0277J

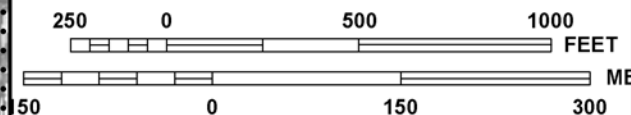
MAP REVISED
DECEMBER 3, 2009

Federal Emergency Management Agency

This is an official copy of a portion of the above referenced flood map. It was extracted using F-MIT On-Line. This map does not reflect changes or amendments which may have been made subsequent to the date on the title block. For the latest product information about National Flood Insurance Program flood maps check the FEMA Flood Map Store at www.msc.fema.gov



MAP SCALE 1" = 500'



NFIP

NATIONAL FLOOD INSURANCE PROGRAM

PANEL 0277J

FIRM

FLOOD INSURANCE RATE MAP

ORANGE COUNTY,
CALIFORNIA
AND INCORPORATED AREAS

PANEL 277 OF 539

(SEE MAP INDEX FOR FIRM PANEL LAYOUT)

CONTAINS:

COMMUNITY	NUMBER	PANEL	SUFFIX
ORANGE COUNTY	060212	0277	J
SANTA ANA, CITY OF	060232	0277	J
TUSTIN, CITY OF	060235	0277	J

Notice to User: The Map Number shown below should be used when placing map orders; the Community Number shown above should be used on insurance applications for the subject community.



MAP NUMBER
06059C0277J

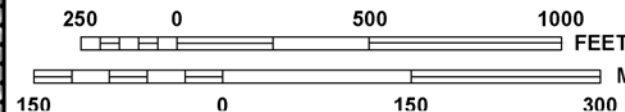
MAP REVISED
DECEMBER 3, 2009

Federal Emergency Management Agency

This is an official copy of a portion of the above referenced flood map. It was extracted using F-MIT On-Line. This map does not reflect changes or amendments which may have been made subsequent to the date on the title block. For the latest product information about National Flood Insurance Program flood maps check the FEMA Flood Map Store at www.msc.fema.gov



MAP SCALE 1" = 500'



NFIP

PANEL 0277J

NATIONAL FLOOD INSURANCE PROGRAM

FIRM

FLOOD INSURANCE RATE MAP

ORANGE COUNTY,
CALIFORNIA
AND INCORPORATED AREAS

PANEL 277 OF 539

(SEE MAP INDEX FOR FIRM PANEL LAYOUT)

CONTAINS:

COMMUNITY	NUMBER	PANEL	SUFFIX
ORANGE COUNTY	060212	0277	J
SANTA ANA, CITY OF	060232	0277	J
TUSTIN, CITY OF	060235	0277	J

Notice to User: The Map Number shown below should be used when placing map orders; the Community Number shown above should be used on insurance applications for the subject community.



MAP NUMBER
06059C0277J

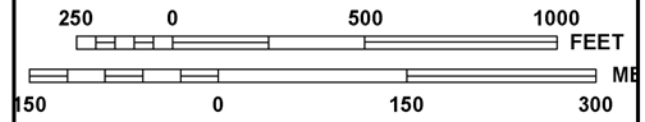
MAP REVISED
DECEMBER 3, 2009

Federal Emergency Management Agency

This is an official copy of a portion of the above referenced flood map. It was extracted using F-MIT On-Line. This map does not reflect changes or amendments which may have been made subsequent to the date on the title block. For the latest product information about National Flood Insurance Program flood maps check the FEMA Flood Map Store at www.msc.fema.gov



MAP SCALE 1" = 500'



NFIP
NATIONAL FLOOD INSURANCE PROGRAM

PANEL 0277J

FIRM

FLOOD INSURANCE RATE MAP

ORANGE COUNTY,
CALIFORNIA
AND INCORPORATED AREAS

PANEL 277 OF 539

(SEE MAP INDEX FOR FIRM PANEL LAYOUT)

CONTAINS:

COMMUNITY	NUMBER	PANEL	SUFFIX
ORANGE COUNTY	060212	0277	J
SANTA ANA, CITY OF	060232	0277	J
TUSTIN, CITY OF	060235	0277	J

Notice to User: The Map Number shown below should be used when placing map orders; the Community Number shown above should be used on insurance applications for the subject community.

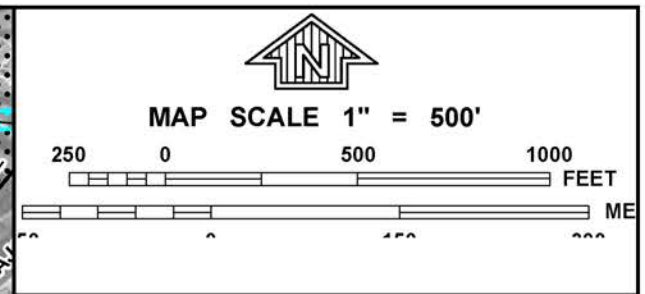


MAP NUMBER
06059C0277J

MAP REVISED
DECEMBER 3, 2009

Federal Emergency Management Agency

This is an official copy of a portion of the above referenced flood map. It was extracted using F-MIT On-Line. This map does not reflect changes or amendments which may have been made subsequent to the date on the title block. For the latest product information about National Flood Insurance Program flood maps check the FEMA Flood Map Store at www.msc.fema.gov



NFIP
NATIONAL FLOOD INSURANCE PROGRAM

PANEL 0281J

FIRM
FLOOD INSURANCE RATE MAP

**ORANGE COUNTY,
 CALIFORNIA
 AND INCORPORATED AREAS**

PANEL 281 OF 539
 (SEE MAP INDEX FOR FIRM PANEL LAYOUT)

CONTAINS:

COMMUNITY	NUMBER	PANEL	SUFFIX
IRVINE, CITY OF	060222	0281	J
ORANGE COUNTY	060212	0281	J
TUSTIN, CITY OF	060235	0281	J

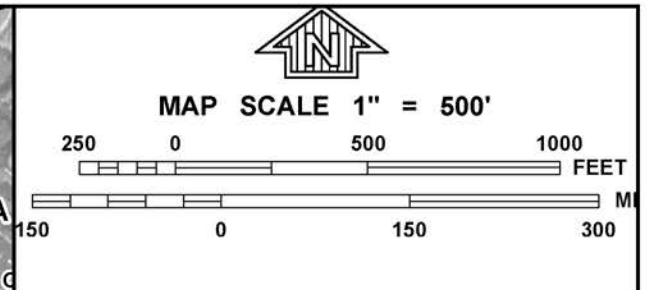
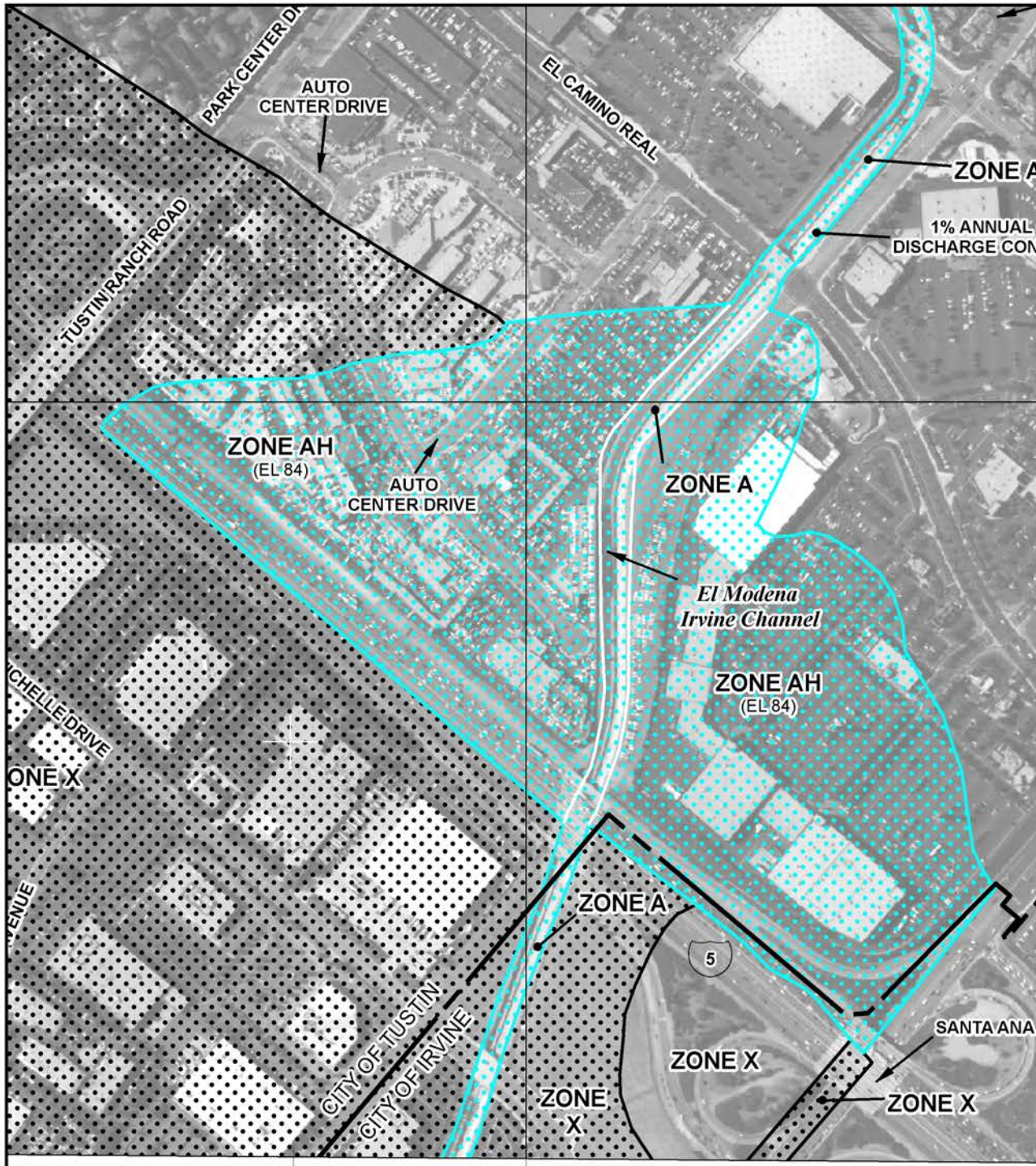
Notice to User: The Map Number shown below should be used when placing map orders; the Community Number shown above should be used on insurance applications for the subject community.

MAP NUMBER
06059C0281J

MAP REVISED
DECEMBER 3, 2009

Federal Emergency Management Agency

This is an official copy of a portion of the above referenced flood map. It was extracted using F-MIT On-Line. This map does not reflect changes or amendments which may have been made subsequent to the date on the title block. For the latest product information about National Flood Insurance Program flood maps check the FEMA Flood Map Store at www.msc.fema.gov



NFIP

NATIONAL FLOOD INSURANCE PROGRAM

PANEL 0281J

FIRM

FLOOD INSURANCE RATE MAP

ORANGE COUNTY,
CALIFORNIA
AND INCORPORATED AREAS

PANEL 281 OF 539

(SEE MAP INDEX FOR FIRM PANEL LAYOUT)

CONTAINS

COMMUNITY	NUMBER	PANEL	SUFFIX
IRVINE, CITY OF	060222	0281	J
ORANGE COUNTY	060212	0281	J
TUSTIN, CITY OF	060235	0281	J

Notice to User: The Map Number shown below should be used when placing map orders; the Community Number shown above should be used on insurance applications for the subject community.

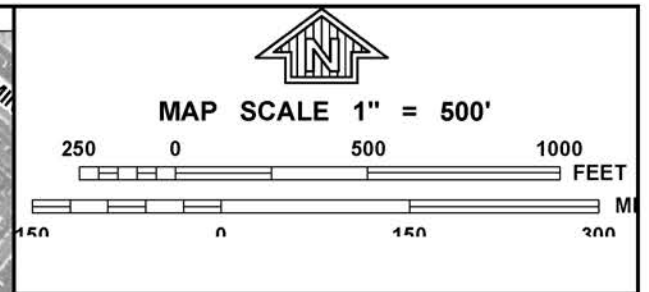


MAP NUMBER
06059C0281J

MAP REVISED
DECEMBER 3, 2009

Federal Emergency Management Agency

This is an official copy of a portion of the above referenced flood map. It was extracted using F-MIT On-Line. This map does not reflect changes or amendments which may have been made subsequent to the date on the title block. For the latest product information about National Flood Insurance Program flood maps check the FEMA Flood Map Store at www.msc.fema.gov



NFIP

NATIONAL FLOOD INSURANCE PROGRAM

PANEL 0283J

FIRM

FLOOD INSURANCE RATE MAP

ORANGE COUNTY,
CALIFORNIA
AND INCORPORATED AREAS

PANEL 283 OF 539

(SEE MAP INDEX FOR FIRM PANEL LAYOUT)

CONTAINS:

COMMUNITY	NUMBER	PANEL	SUFFIX
IRVINE, CITY OF	060222	0283	J
TUSTIN, CITY OF	060235	0283	J

Notice to User: The Map Number shown below should be used when placing map orders; the Community Number shown above should be used on insurance applications for the subject community.

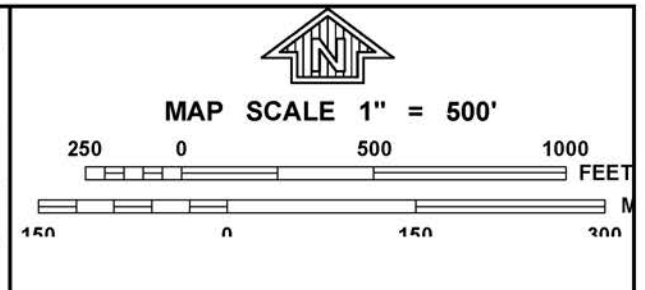


MAP NUMBER
06059C0283J

MAP REVISED
DECEMBER 3, 2009

Federal Emergency Management Agency

This is an official copy of a portion of the above referenced flood map. It was extracted using F-MIT On-Line. This map does not reflect changes or amendments which may have been made subsequent to the date on the title block. For the latest product information about National Flood Insurance Program flood maps check the FEMA Flood Map Store at www.msc.fema.gov



NFIP

NATIONAL FLOOD INSURANCE PROGRAM

PANEL 0283J

FIRM

FLOOD INSURANCE RATE MAP

ORANGE COUNTY,
CALIFORNIA
AND INCORPORATED AREAS

PANEL 283 OF 539

(SEE MAP INDEX FOR FIRM PANEL LAYOUT)

CONTAINS

COMMUNITY	NUMBER	PANEL	SUFFIX
IRVINE, CITY OF	060222	0283	J
TUSTIN, CITY OF	060235	0283	J

Notice to User: The Map Number shown below should be used when placing map orders; the Community Number shown above should be used on insurance applications for the subject community.



MAP NUMBER
06059C0283J

MAP REVISED
DECEMBER 3, 2009

Federal Emergency Management Agency

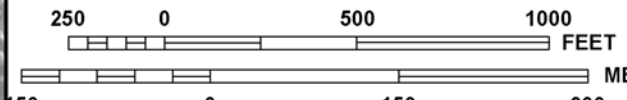
This is an official copy of a portion of the above referenced flood map. It was extracted using F-MIT On-Line. This map does not reflect changes or amendments which may have been made subsequent to the date on the title block. For the latest product information about National Flood Insurance Program flood maps check the FEMA Flood Map Store at www.msc.fema.gov



PANEL 0284J



MAP SCALE 1" = 500'



NFIP

NATIONAL FLOOD INSURANCE PROGRAM

PANEL 0284J

FIRM

FLOOD INSURANCE RATE MAP

ORANGE COUNTY,
CALIFORNIA
AND INCORPORATED AREAS

PANEL 284 OF 539

(SEE MAP INDEX FOR FIRM PANEL LAYOUT)

CONTAINS:

COMMUNITY	NUMBER	PANEL	SUFFIX
IRVINE, CITY OF	060222	0284	J

Notice to User: The Map Number shown below should be used when placing map orders; the Community Number shown above should be used on insurance applications for the subject community.

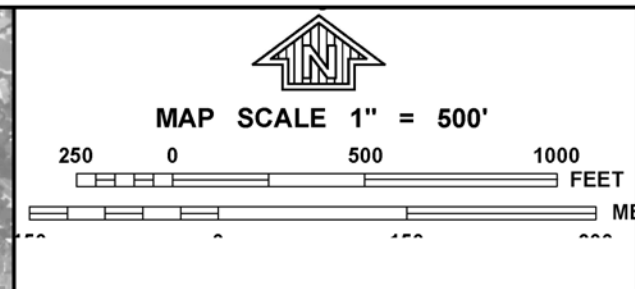
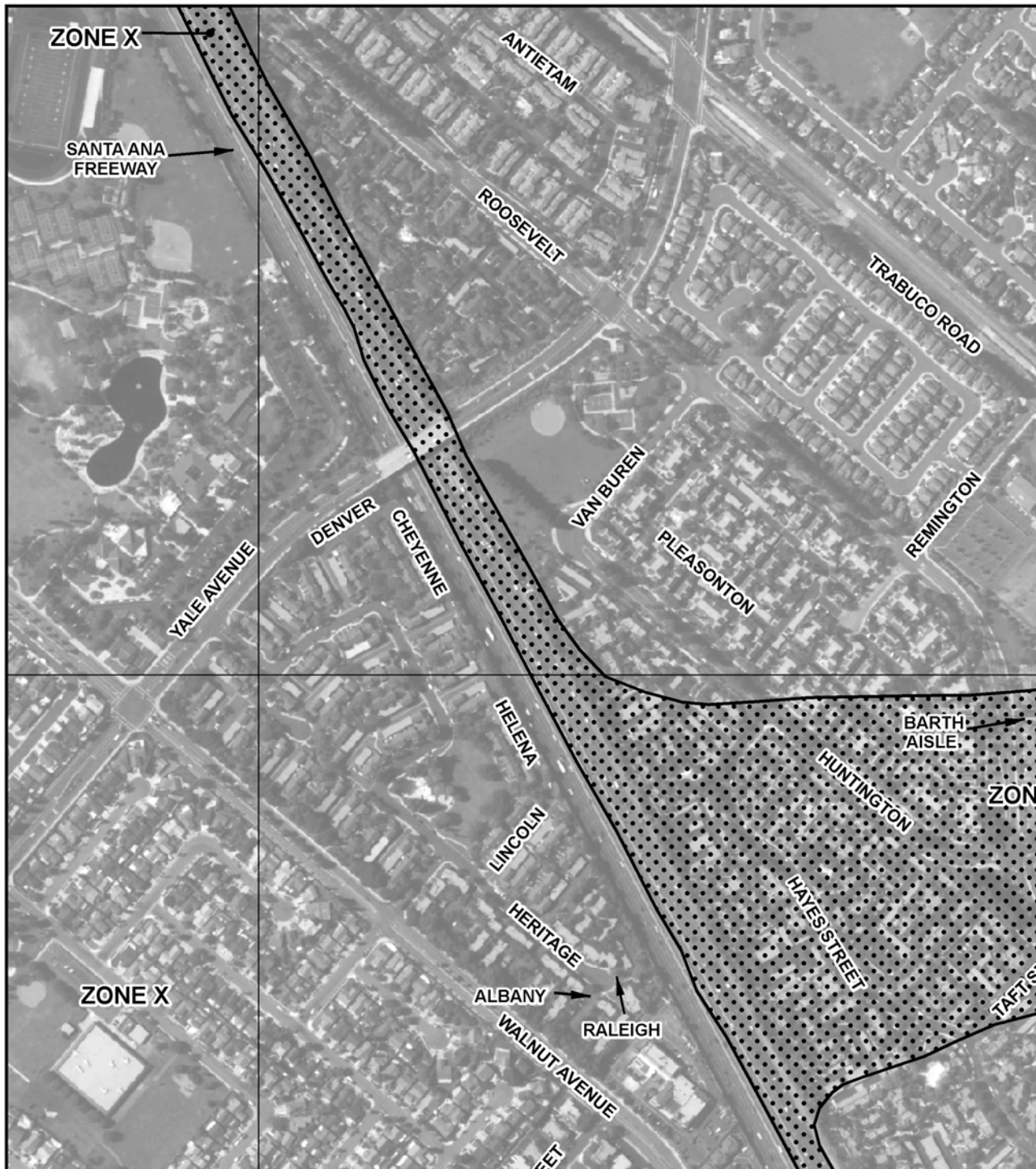


MAP NUMBER
06059C0284J

MAP REVISED
DECEMBER 3, 2009

Federal Emergency Management Agency

This is an official copy of a portion of the above referenced flood map. It was extracted using F-MIT On-Line. This map does not reflect changes or amendments which may have been made subsequent to the date on the title block. For the latest product information about National Flood Insurance Program flood maps check the FEMA Flood Map Store at www.msc.fema.gov



NFIP

PANEL 0284J

FIRM

FLOOD INSURANCE RATE MAP

ORANGE COUNTY,
CALIFORNIA
AND INCORPORATED AREAS

PANEL 284 OF 539

(SEE MAP INDEX FOR FIRM PANEL LAYOUT)

CONTAINS

COMMUNITY	NUMBER	PANEL	SUFFIX
IRVINE, CITY OF	060222	0284	J

Notice to User: The Map Number shown below should be used when placing map orders; the Community Number shown above should be used on insurance applications for the subject community.



MAP NUMBER
06059C0284J

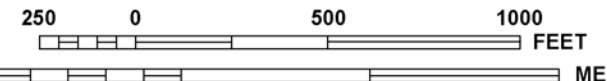
MAP REVISED
DECEMBER 3, 2009

Federal Emergency Management Agency

This is an official copy of a portion of the above referenced flood map. It was extracted using F-MIT On-Line. This map does not reflect changes or amendments which may have been made subsequent to the date on the title block. For the latest product information about National Flood Insurance Program flood maps check the FEMA Flood Map Store at www.msc.fema.gov



MAP SCALE 1" = 500'



NFIP

NATIONAL FLOOD INSURANCE PROGRAM

PANEL 0284J

FIRM

FLOOD INSURANCE RATE MAP

ORANGE COUNTY,
CALIFORNIA
AND INCORPORATED AREAS

PANEL 284 OF 539

(SEE MAP INDEX FOR FIRM PANEL LAYOUT)

CONTAINS

COMMUNITY	NUMBER	PANEL	SUFFIX
IRVINE, CITY OF	060222	0284	J

Notice to User: The Map Number shown below should be used when placing map orders; the Community Number shown above should be used on insurance applications for the subject community.



MAP NUMBER
06059C0284J

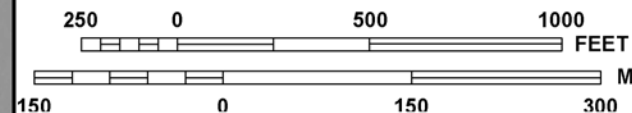
MAP REVISED
DECEMBER 3, 2009

Federal Emergency Management Agency

This is an official copy of a portion of the above referenced flood map. It was extracted using F-MIT On-Line. This map does not reflect changes or amendments which may have been made subsequent to the date on the title block. For the latest product information about National Flood Insurance Program flood maps check the FEMA Flood Map Store at www.msc.fema.gov



MAP SCALE 1" = 500'



NFIP

NATIONAL FLOOD INSURANCE PROGRAM

PANEL 0292J

FIRM

FLOOD INSURANCE RATE MAP

ORANGE COUNTY,
CALIFORNIA
AND INCORPORATED AREAS

PANEL 292 OF 539

(SEE MAP INDEX FOR FIRM PANEL LAYOUT)

CONTAINS:

COMMUNITY	NUMBER	PANEL	SUFFIX
IRVINE, CITY OF	060222	0292	J

Notice to User: The Map Number shown below should be used when placing map orders; the Community Number shown above should be used on insurance applications for the subject community.

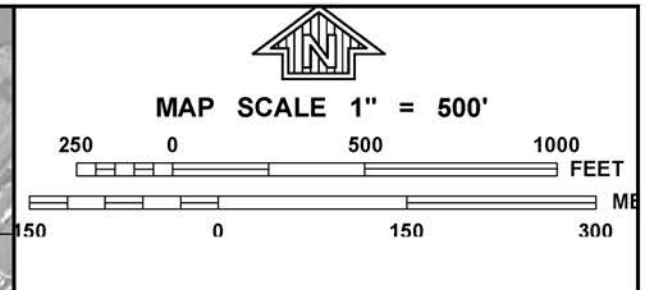


MAP NUMBER
06059C0292J

MAP REVISED
DECEMBER 3, 2009

Federal Emergency Management Agency

This is an official copy of a portion of the above referenced flood map. It was extracted using F-MIT On-Line. This map does not reflect changes or amendments which may have been made subsequent to the date on the title block. For the latest product information about National Flood Insurance Program flood maps check the FEMA Flood Map Store at www.msc.fema.gov



NFIP

NATIONAL FLOOD INSURANCE PROGRAM

PANEL 0292J

FIRM

FLOOD INSURANCE RATE MAP

**ORANGE COUNTY,
CALIFORNIA
AND INCORPORATED AREAS**


PANEL 292 OF 539

(SEE MAP INDEX FOR FIRM PANEL LAYOUT)

CONTAINS:

<u>COMMUNITY</u>	<u>NUMBER</u>	<u>PANEL</u>	<u>SUFFIX</u>
IRVINE, CITY OF	060222	0292	J

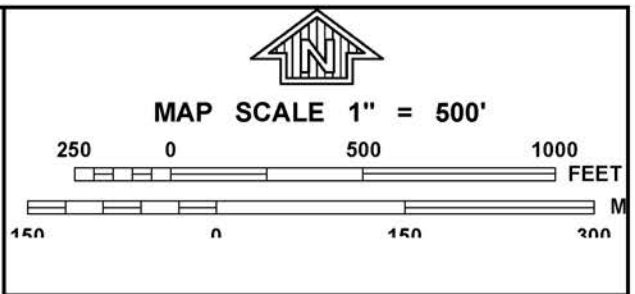
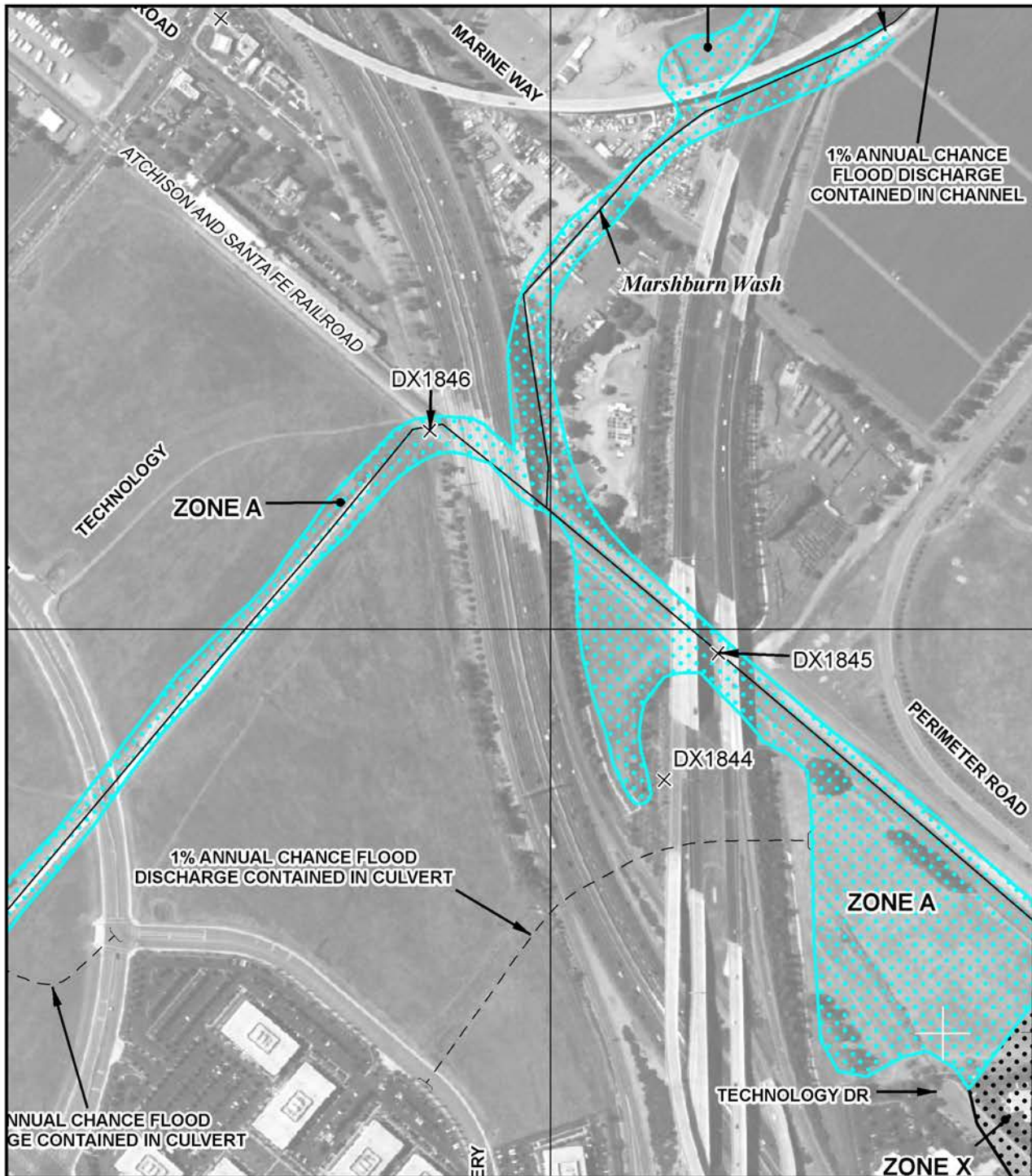
Notice to User: The Map Number shown below should be used when placing map orders; the Community Number shown above should be used on insurance applications for the subject community.

 **MAP NUMBER
06059C0292J**

**MAP REVISED
DECEMBER 3, 2009**

Federal Emergency Management Agency

This is an official copy of a portion of the above referenced flood map. It was extracted using F-MIT On-Line. This map does not reflect changes or amendments which may have been made subsequent to the date on the title block. For the latest product information about National Flood Insurance Program flood maps check the FEMA Flood Map Store at www.msc.fema.gov



NFIP

PANEL 0292J

FIRM

FLOOD INSURANCE RATE MAP

ORANGE COUNTY,
CALIFORNIA
AND INCORPORATED AREAS

PANEL 292 OF 539

(SEE MAP INDEX FOR FIRM PANEL LAYOUT)

CONTAINS

COMMUNITY	NUMBER	PANEL	SUFFIX
IRVINE, CITY OF	060222	0292	J

Notice to User: The Map Number shown below should be used when placing map orders; the Community Number shown above should be used on insurance applications for the subject community.

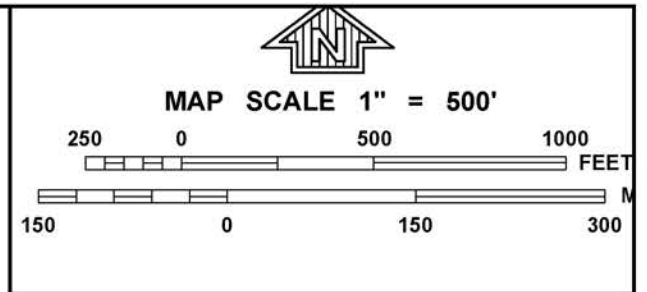


MAP NUMBER
06059C0292J

MAP REVISED
DECEMBER 3, 2009

Federal Emergency Management Agency

This is an official copy of a portion of the above referenced flood map. It was extracted using F-MIT On-Line. This map does not reflect changes or amendments which may have been made subsequent to the date on the title block. For the latest product information about National Flood Insurance Program flood maps check the FEMA Flood Map Store at www.msc.fema.gov



NFIP
NATIONAL FLOOD INSURANCE PROGRAM

PANEL 0292J

FIRM

FLOOD INSURANCE RATE MAP

**ORANGE COUNTY,
CALIFORNIA
AND INCORPORATED AREAS**

PANEL 292 OF 539

(SEE MAP INDEX FOR FIRM PANEL LAYOUT)

CONTAINS:

COMMUNITY	NUMBER	PANEL	SUFFIX
IRVINE, CITY OF	060222	0292	J

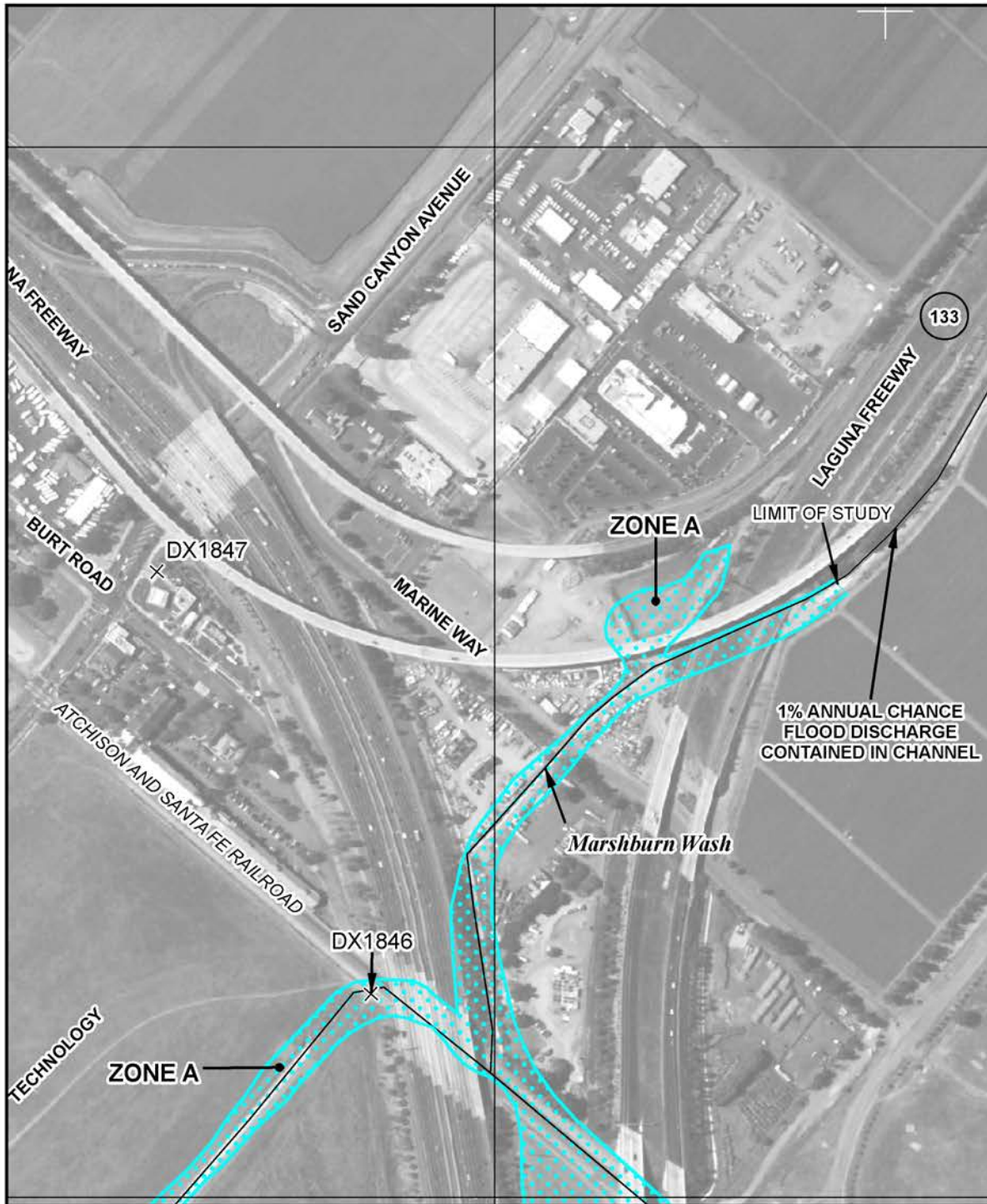
Notice to User: The Map Number shown below should be used when placing map orders; the Community Number shown above should be used on insurance applications for the subject community.

MAP NUMBER
06059C0292J

MAP REVISED
DECEMBER 3, 2009

Federal Emergency Management Agency

This is an official copy of a portion of the above referenced flood map. It was extracted using F-MIT On-Line. This map does not reflect changes or amendments which may have been made subsequent to the date on the title block. For the latest product information about National Flood Insurance Program flood maps check the FEMA Flood Map Store at www.msc.fema.gov



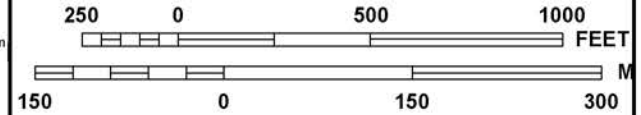
37 27 000m

JOINS PANEL 0315

37 26 000m



MAP SCALE 1" = 500'



NFIP

PANEL 0292J

NATIONAL FLOOD INSURANCE PROGRAM

FIRM

FLOOD INSURANCE RATE MAP

ORANGE COUNTY,
CALIFORNIA
AND INCORPORATED AREAS

PANEL 292 OF 539

(SEE MAP INDEX FOR FIRM PANEL LAYOUT)

CONTAINS:

COMMUNITY	NUMBER	PANEL	SUFFIX
IRVINE, CITY OF	060222	0292	J

Notice to User: The Map Number shown below should be used when placing map orders; the Community Number shown above should be used on insurance applications for the subject community.

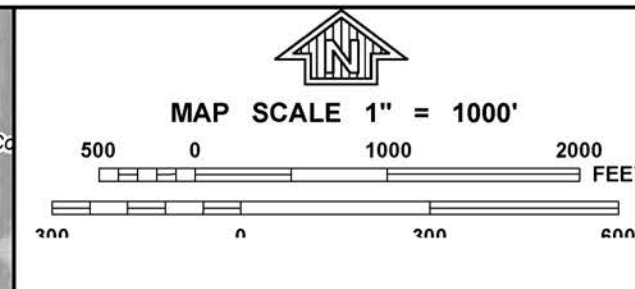


MAP NUMBER
06059C0292J

MAP REVISED
DECEMBER 3, 2009

Federal Emergency Management Agency

This is an official copy of a portion of the above referenced flood map. It was extracted using F-MIT On-Line. This map does not reflect changes or amendments which may have been made subsequent to the date on the title block. For the latest product information about National Flood Insurance Program flood maps check the FEMA Flood Map Store at www.msc.fema.gov



NFIP
NATIONAL FLOOD INSURANCE PROGRAM

PANEL 0315J

FIRM
FLOOD INSURANCE RATE MAP

ORANGE COUNTY, CALIFORNIA AND INCORPORATED AREAS

PANEL 315 OF 539
(SEE MAP INDEX FOR FIRM PANEL LAYOUT)

CONTAINS:

COMMUNITY	NUMBER	PANEL	SUFFIX
IRVINE, CITY OF	060222	0315	J
LAKE FOREST, CITY OF	060759	0315	J
ORANGE COUNTY	060212	0315	J

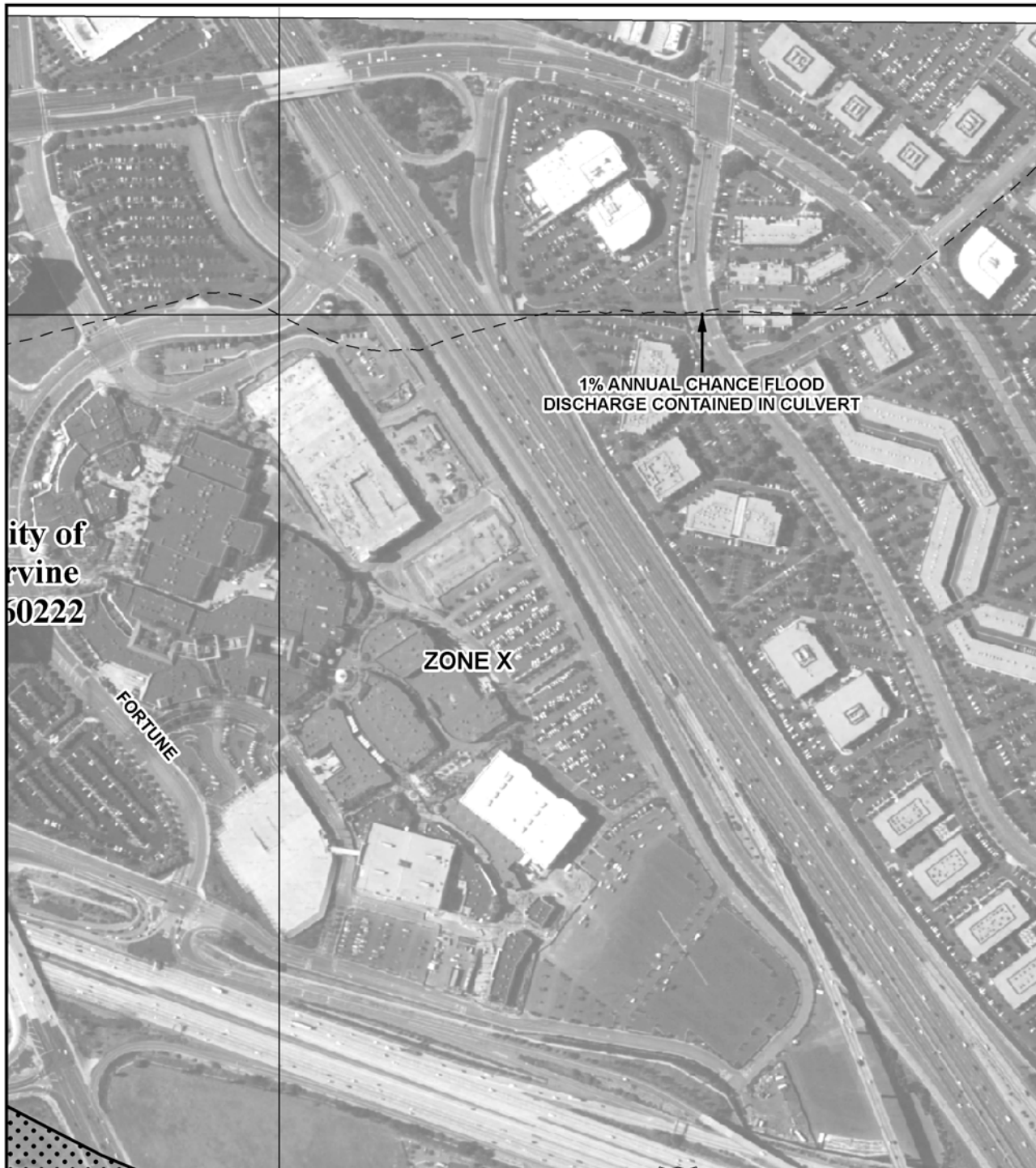
Notice to User: The Map Number shown below should be used when placing map orders; the Community Number shown above should be used on insurance applications for the subject community.

MAP NUMBER
06059C0315J

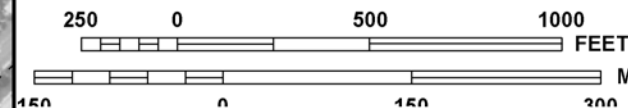
MAP REVISED
DECEMBER 3, 2009

Federal Emergency Management Agency

This is an official copy of a portion of the above referenced flood map. It was extracted using F-MIT On-Line. This map does not reflect changes or amendments which may have been made subsequent to the date on the title block. For the latest product information about National Flood Insurance Program flood maps check the FEMA Flood Map Store at www.msc.fema.gov



MAP SCALE 1" = 500'



NFIP

NATIONAL FLOOD INSURANCE PROGRAM

PANEL 0313J

FIRM

FLOOD INSURANCE RATE MAP

ORANGE COUNTY,
CALIFORNIA
AND INCORPORATED AREAS

PANEL 313 OF 539

(SEE MAP INDEX FOR FIRM PANEL LAYOUT)

CONTAINS:

COMMUNITY	NUMBER	PANEL	SUFFIX
IRVINE, CITY OF	060222	0313	J
LAGUNA HILLS, CITY OF	060760	0313	J
LAKE FOREST, CITY OF	060759	0313	J

Notice to User: The Map Number shown below should be used when placing map orders; the Community Number shown above should be used on insurance applications for the subject community.

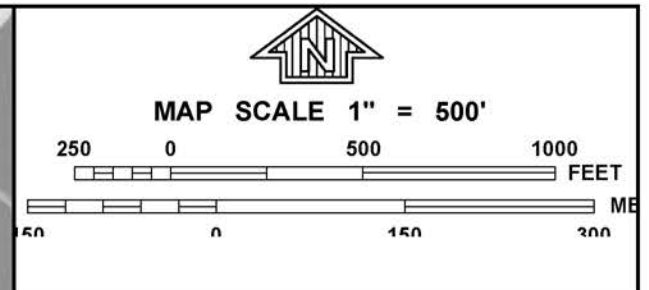
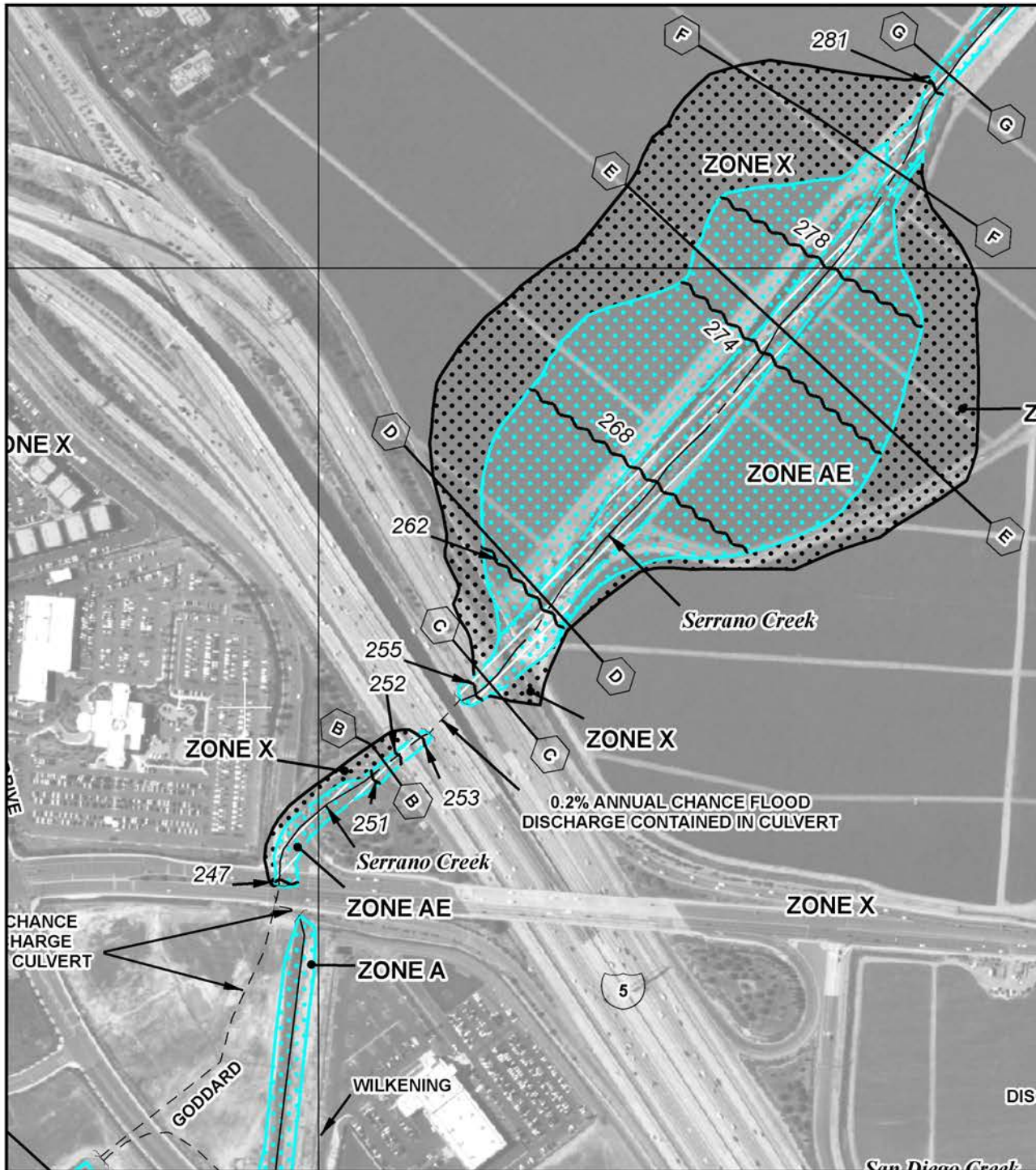


MAP NUMBER
06059C0313J

MAP REVISED
DECEMBER 3, 2009

Federal Emergency Management Agency

This is an official copy of a portion of the above referenced flood map. It was extracted using F-MIT On-Line. This map does not reflect changes or amendments which may have been made subsequent to the date on the title block. For the latest product information about National Flood Insurance Program flood maps check the FEMA Flood Map Store at www.msc.fema.gov



NFIP

NATIONAL FLOOD INSURANCE PROGRAM

PANEL 0313J

FIRM

FLOOD INSURANCE RATE MAP

ORANGE COUNTY,
CALIFORNIA
AND INCORPORATED AREAS

PANEL 313 OF 539

(SEE MAP INDEX FOR FIRM PANEL LAYOUT)

CONTAINS:

COMMUNITY	NUMBER	PANEL	SUFFIX
IRVINE, CITY OF	060222	0313	J
LAGUNA HILLS, CITY OF	060760	0313	J
LAKE FOREST, CITY OF	060759	0313	J

Notice to User: The Map Number shown below should be used when placing map orders; the Community Number shown above should be used on insurance applications for the subject community.



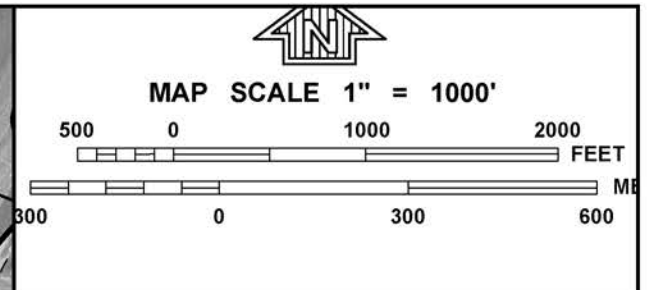
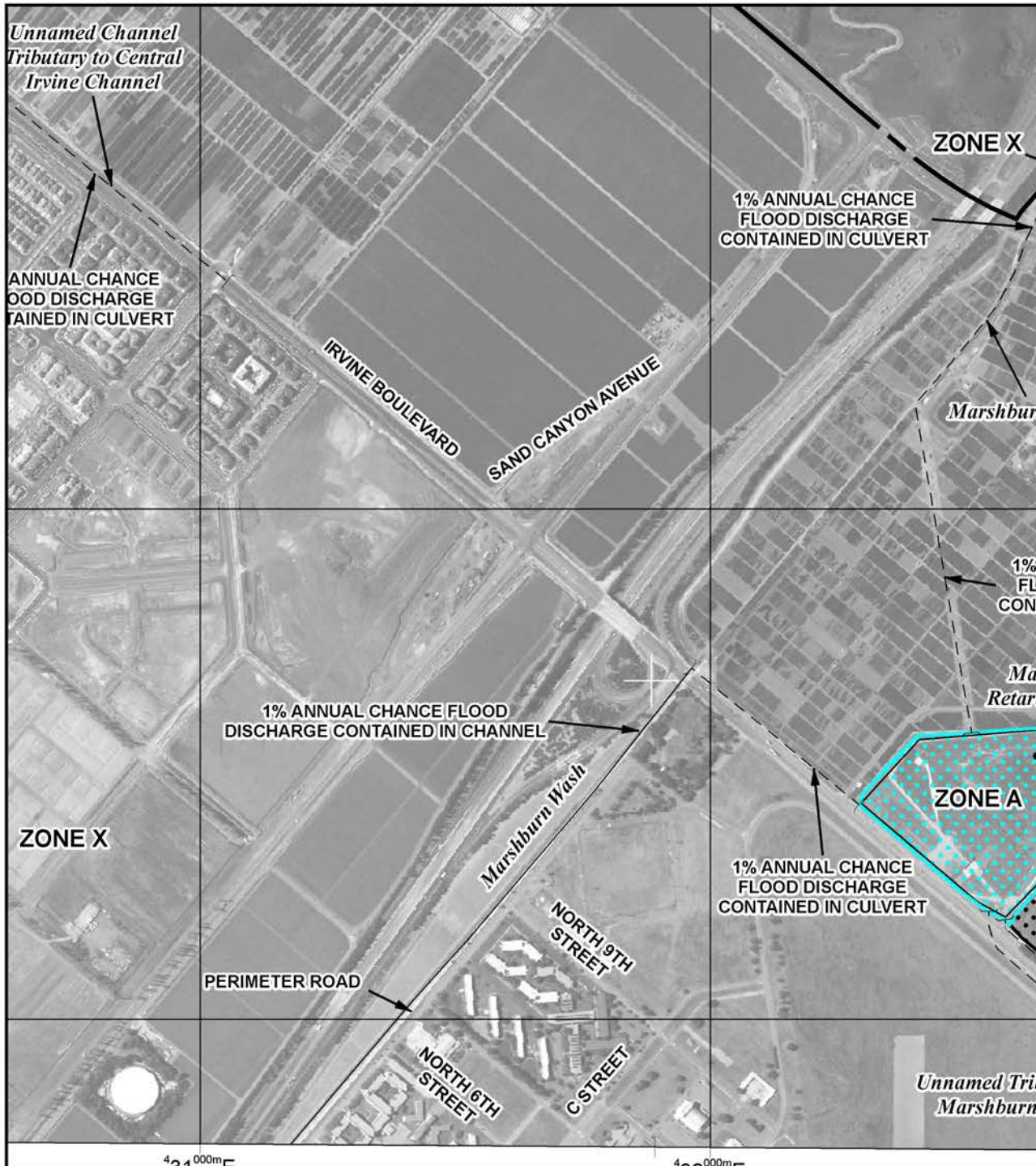
MAP NUMBER
06059C0313J

MAP REVISED
DECEMBER 3, 2009

Federal Emergency Management Agency

DISC

This is an official copy of a portion of the above referenced flood map. It was extracted using F-MIT On-Line. This map does not reflect changes or amendments which may have been made subsequent to the date on the title block. For the latest product information about National Flood Insurance Program flood maps check the FEMA Flood Map Store at www.msc.fema.gov



NFIP

NATIONAL FLOOD INSURANCE PROGRAM

PANEL 0305J

FIRM

FLOOD INSURANCE RATE MAP

ORANGE COUNTY,
CALIFORNIA
AND INCORPORATED AREAS

PANEL 305 OF 539

(SEE MAP INDEX FOR FIRM PANEL LAYOUT)

CONTAINS:

COMMUNITY	NUMBER	PANEL	SUFFIX
IRVINE, CITY OF	060222	0305	J
ORANGE COUNTY	060212	0305	J

Notice to User: The Map Number shown below should be used when placing map orders; the Community Number shown above should be used on insurance applications for the subject community.

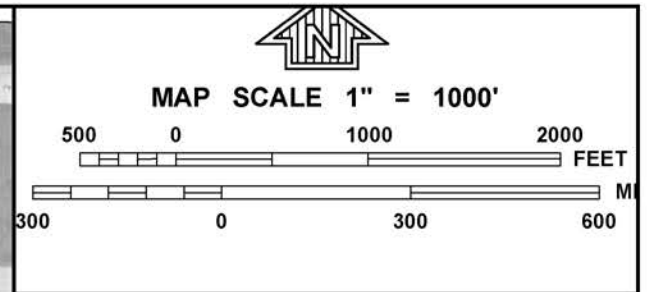


MAP NUMBER
06059C0305J

MAP REVISED
DECEMBER 3, 2009

Federal Emergency Management Agency

This is an official copy of a portion of the above referenced flood map. It was extracted using F-MIT On-Line. This map does not reflect changes or amendments which may have been made subsequent to the date on the title block. For the latest product information about National Flood Insurance Program flood maps check the FEMA Flood Map Store at www.msc.fema.gov



NFIP
NATIONAL FLOOD INSURANCE PROGRAM

PANEL 0315J

FIRM
FLOOD INSURANCE RATE MAP

**ORANGE COUNTY,
 CALIFORNIA
 AND INCORPORATED AREAS**

PANEL 315 OF 539
 (SEE MAP INDEX FOR FIRM PANEL LAYOUT)

CONTAINS:

COMMUNITY	NUMBER	PANEL	SUFFIX
IRVINE, CITY OF	060222	0315	J
LAKE FOREST, CITY OF	060759	0315	J
ORANGE COUNTY	060212	0315	J

Notice to User: The Map Number shown below should be used when placing map orders; the Community Number shown above should be used on insurance applications for the subject community.

MAP NUMBER
06059C0315J

MAP REVISED
DECEMBER 3, 2009

Federal Emergency Management Agency

This is an official copy of a portion of the above referenced flood map. It was extracted using F-MIT On-Line. This map does not reflect changes or amendments which may have been made subsequent to the date on the title block. For the latest product information about National Flood Insurance Program flood maps check the FEMA Flood Map Store at www.msc.fema.gov

This page intentionally left blank