

APPENDIX I

Water Supply Assessment

Cambrian Park Plaza Project Water Supply Assessment

January 2018



Prepared by

Jake Walsh, P.E.
Director of Engineering, Planning



Andy Yang, P.E.
Engineering Supervisor, Planning



Reviewed by

Bill Tuttle, P.E.
Assistant Chief Engineer
Planning and Development

Table of Contents

Background & Purpose	2
Service Area & Population	3
Climate	3
Past, Current and Future Water Use	4
System Supplies	6
Water Supply Vulnerability	8
Transfer and Exchange Opportunities	8
Water Supply Reliability.....	9
Water Demand Management Measures	14
Summary	15

Figures

- 1 Regional Map
- 2 Cambrian Park Plaza Project Vicinity Map

San Jose Water (SJW) is one of the largest privately owned water systems in the United States, providing high-quality water and exceptional service to more than one million residents of Santa Clara County since established in 1866.

Background & Purpose

The Cambrian Park Plaza Project (Project) is a mixed-use development with up to 238 hotel rooms or up to 150,000 square feet of office space, up to 115,000 square feet of retail/entertainment center space, up to 130,000 square feet of convalescent hospital space, up to 280 units of residential apartments, up to 84 townhomes, and approximately two acres of public park and town square space on an 18.13 gross acre site, located adjacent to the intersection of Camden and Union Avenues in City of San Jose.

This Water Supply Assessment (WSA) describes the relationship between existing and future water supplies and presents SJW's strong ability to provide a diverse water supply to match build-out water demands under both normal and dry years. Based on Santa Clara Valley Water District's (SCVWD's) 2015 Urban Water Management Plan and conservation methods currently employed, SJW is able to meet the needs of the service area through at least 2035 for average and single-dry years without a call for water use reductions. This assumes reserves are at healthy levels at the beginning of the year and that projects and programs identified in SCVWD's Water Supply Infrastructure Master Plan (WSIMP) are implemented. If reserves are low at the beginning of a single-dry year, SCVWD might call for water use reductions in combination with using reserves.



Source: <http://cambrianparkplazashoppingcenter.com>

SCVWD has determined that water shortages would occur in the event of a multiple-dry year scenario and are evaluating supply projects and programs to minimize the need to call for water use reductions greater than ten percent. Projects and programs may include additional long-term water conservation savings, water recycling, recharge capacity, storm water capture, reuse, banking, and storage. SCVWD's WSIMP implementation will be staged to minimize the risk of stranded investments or under investment should demands not increase as projected.

This WSA is written in response to California Senate Bill 610 (SB 610) and Senate Bill 221 (SB 221); legislation which requires water retailers to demonstrate whether their water supplies are sufficient for certain proposed subdivisions and large development projects subject to the California Environmental Quality Act. SB 610 includes the requirements for detailed water supply assessments, and SB 221 includes the requirement for written verification of sufficient water supply based on substantial evidence. SB 610 requires that a WSA be prepared by the local water retailer and submitted within 90 days to the requesting agency.

Service Area & Population

SJW's service area spans 139 square miles, including most of the cities of San Jose and Cupertino, the entire cities of Campbell, Monte Sereno, Saratoga, the Town of Los Gatos, and parts of unincorporated Santa Clara County.

The population of SJW's service area, including growth associated with this Plan Area, is shown in the following table. These projections are based on the Association of Bay Area Governments' population projections and were included in SJW's 2015 Urban Water Management Plan.

Table 1: Current and Projected SJW Service Area Population

2015	2020	2025	2030	2035	2040
982,750	1,034,396	1,087,273	1,142,484	1,201,289	1,262,356

Climate

The San Jose area experiences a low-humidity moderate climate with an annual average rainfall total of about 14 inches. Maximum monthly average temperatures range from the mid 60's to the low 80's (°F) in spring and summer and from the high 50's to low 60's (°F) in the winter.¹ Most precipitation in the area occurs between November and March with January and February typically being the wettest months as shown in Table 2. According to SCVWD's 2015 UWMP, the annual average evapotranspiration rate for the San Jose area is about 50 inches per year. Evapotranspiration measures the loss of water to the atmosphere by evaporation from soil and plant surfaces and transpiration from plants. Evapotranspiration serves as an indicator of how much water plants need for healthy growth.

Table 2: Climate Data

	Jan	Feb	Mar	Apr	May	Jun
Average High Temperature (°F)	58	62	66	69	74	79
Average Low Temperature (°F)	42	45	47	49	52	56
Average Precipitation (in)	2.8	2.6	2.3	1.1	0.4	0.1
Evapotranspiration (in)	1.5	1.9	3.5	5.0	6.0	6.8

	Jul	Aug	Sept	Oct	Nov	Dec	Annual
Average High Temperature (°F)	82	82	80	74	64	58	70.7
Average Low Temperature (°F)	58	58	57	53	46	42	50.4
Average Precipitation (in)	0.0	0.0	0.2	0.7	1.5	2.5	14.3
Evapotranspiration (in)	7.0	6.3	4.8	3.5	1.9	1.4	49.6

¹ Monthly temperature totals from www.weather.com

Past, Current and Future Water Use

The majority of connections to SJW's distribution system are either residential or commercial. SJW also provides water to industrial, institutional, and governmental connections. SJW's customer database does not differentiate between single-family and multi-family residential accounts, but estimates 15 percent of all residential accounts are multi-family. The resale category represents the small mutual water companies, in which SJW provides a master water service and where the mutual water company is responsible for distributing the water.

SJW has developed demand projections from 2015 to 2040 based on population and per capita usage projections. The Association of Bay Area Governments (ABAG) census tract population projections were used to estimate population growth. It was assumed that population growth after 2010 would be within new, high water efficiency developments with a demand of 100 gpcd. It is expected that on average the per capita usage for the existing 2010 population will experience an annual decline of 0.2 percent until 2040.

Table 3: SJW Water Use by Customer Type (AF/yr)

Customer Type	2015	2020	2025	2030	2035	2040
Single Family	47,789	63,443	65,536	67,752	70,155	72,677
Multi Family	8,433	11,195	11,567	11,956	12,380	12,825
Commercial	36,434	48,369	49,965	51,652	53,485	55,409
Industrial	700	930	961	991	1,028	1,065
Institutional / Governmental	4,984	6,617	6,834	7,065	7,316	7,580
Sales / Transfers / Exchanges	408	543	559	580	598	620
Other	150	199	206	212	221	230
Total	98,898	131,296	135,626	140,208	145,183	150,406

SJW's total demand is not limited to metered usage. Non-revenue water is the sum of (a) water losses, (b) unbilled metered consumption, and (c) unbilled unmetered consumption.

- (a) Water losses are separated into two categories: apparent losses and real losses. Apparent losses include all types of inaccuracies associated with customer metering, theft, as well as data handling errors. Real losses are physical water losses from the pressurized system and the utility's storage tanks, up to the customer meter. For example, this might include lost water through leaks, breaks and overflows.
- (b) Unbilled metered consumption might include metered consumption by the utility.
- (c) Unbilled unmetered consumption is any kind of authorized consumption which is neither billed nor metered. This typically includes items such as firefighting, flushing mains, and draining water storage facilities.

Over a five-year period (2011 – 2015) SJW averaged less than seven percent non-revenue water based on the American Water Works Association's (AWWA) Water Audit Software. This

consistently low level of non-revenue water indicates SJW has an efficient, well-maintained water system. SJW is committed to continuing to reduce its non-revenue water loss percentages through investments in acoustic leak correlation and logging equipment, advanced metering infrastructure, as well as a prudent water main replacement program that ranks pipelines for replacement primarily based upon their propensity to leak.

Table 4: SJW Total System Demand (AF/yr)

	2015	2020	2025	2030	2035	2040
Customer Metered Demand	98,898	131,296	135,626	140,208	145,183	150,406
Non-Revenue Water	7,553	9,139	9,440	9,759	10,106	10,471
Total System Demand	106,451	140,435	145,066	149,967	155,289	160,877

In the 2017 water audit, non-revenue water as a percentage of total water supplied was found to be just over eight percent. This percentage is affected by more factors than simply changes in water loss. Although the percentage of non-revenue water increased, the volume of non-revenue water has generally been trending downward, since 2007.

Water Use Associated with the Cambrian Park Plaza Project

Total water usage for this Project is estimated at 314,650 gallons per day (gpd) which is equivalent to an annual usage of approximately 352.5 acre-feet of water. However, the site being developed has existing water usage which will be eliminated. Water usage at the existing site is on average 8,115 gpd or 9.1 acre-feet per year. Therefore, the annual net demand increase in water usage associated with this Project is 343.4 acre-feet, which represents a 0.23% increase over the system wide 2013 water production of 146,776 acre-feet. The projected water demand for this Project is within normal growth projections for water demand in SJW's system.

Table 5: Total Water Demand Estimated for Project

Existing Demand (gpd) ¹	Cambrian Park Plaza Project						Net Project Demand (gpd)
	Hotel Demand (gpd) ²	Residential Demand (gpd) ³	Office Space Demand (gpd) ⁴	Retail / Entertainment Space Demand (gpd) ⁵	Convalescent Hospital Space (gpd) ⁶	Public Park Demand (gpd) ⁷	
8,115	23,800	145,600	15,000	28,750	97,500	4,000	306,535

¹ Existing daily demand based on actual pre-drought 2013 calendar year usage

² Based on a demand factor of 100 gallons per day per room and 238 hotel rooms in the Project scope

³ Based on a demand factor of 400 gallons per day per residential unit and 364 total units (apartments & townhomes) in the Project scope

⁴ Based on a demand factor of 0.1 gallons per day per square foot of office space and 150,000 square feet of total office space in the Project scope

⁵ Based on a demand factor of 0.25 gallons per day per square foot of retail/entertainment space and 115,000 square feet of total retail/entertainment space in the Project scope

⁶ Based on a demand factor of 0.75 gallons per day per square foot of convalescent hospital space and 130,000 square feet of total convalescent hospital space in the Project scope

⁷ Based on a demand factor of 2,000 gallons per day per acre of public park and town square space and two acres of total public park and town square space in the Project scope

System Supplies

This section describes and quantifies the current and projected sources of water available to SJW. A description and quantification of recycled water supplies is also included.

Imported Treated Surface Water – In 1981, SJW entered into a 70-year master contract with SCVWD for the purchase of treated water. The contract provides for rolling three-year purchase schedules establishing fixed quantities of treated water to be purchased during each period. Water is treated at one of three SCVWD-operated treatment plants (Rinconada, Penitencia and Santa Teresa). SJW and SCVWD currently have a three-year treated water contract for fiscal years 2017/2018 – 2019/2020, with an annual contract supply of 68,114 AF/yr.

Groundwater – SJW draws water from the Santa Clara Valley Subbasin (basin) in the north part of Santa Clara County. The basin is 22 miles long and 15 miles wide, with a surface area of 225 square miles and an operational storage capacity estimated to be 350,000 acre-feet.

The following chart shows groundwater elevation in the basin since the mid 1930's using the well surface elevation as the datum. In 2012, the groundwater basin level was high and well prepared for the effects of a multi-year drought. The high groundwater levels were a result of less pumping, an increased use of imported water, and recharge of water into the aquifer by SCVWD. During the recent drought, which officially ended in the State of California on April 7, 2017, SJW relied more heavily on groundwater, which caused the groundwater elevation to decline. However, as can be seen in Chart 1 below, the groundwater elevation has since rebounded and storage in the basin is now in the normal range.

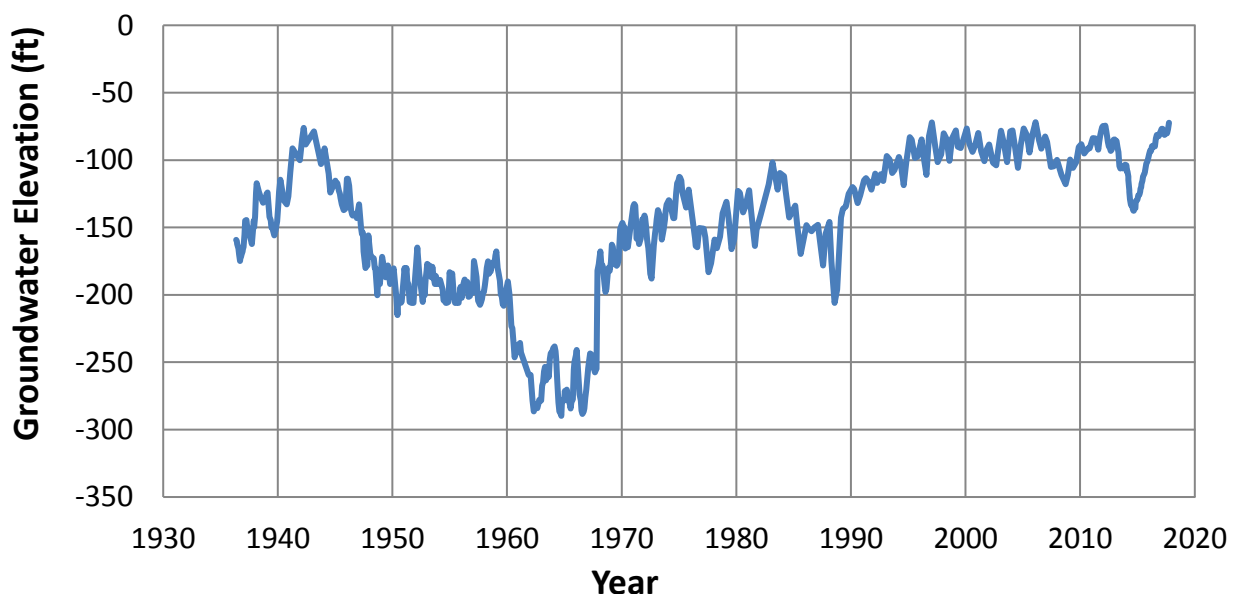


Chart 1: Groundwater Elevation in Santa Clara Valley Subbasin (Well ID: 07S01W25L001)

Groundwater from the basin is a substantial source of water for SJW and in 2014 groundwater accounted for about 57% of SJW's total potable supply. The following table shows the groundwater SJW pumped from the basin from 2011 to 2015.

Table 6: Amount of Groundwater Pumped by SJW (AF/yr)

Basin Name	Metered or Unmetered	2011	2012	2013	2014	2015
Santa Clara Valley Subbasin	Volumetric meter data	38,500	39,696	57,707	74,552	37,888
Groundwater as a percent of total potable water supply		28.3%	28.2%	39.3%	56.8%	35.8%

Surface Water – SJW has “pre-1914 surface water rights” to raw water in Los Gatos Creek and local watersheds in the Santa Cruz Mountains. Prior to 1872, appropriative water rights could be acquired by simply taking and beneficially using water. In 1914, the Water Code was adopted and it grandfathered in all existing water entitlements to license holders. SJW filed for a license in 1947 and was granted license number 10933 in 1976 by the State Water Resources Control Board to draw 6,240 AF/yr from Los Gatos Creek. SJW has upgraded the collection and treatment system that draws water from this watershed which has increased the capacity of this entitlement to approximately 11,200 AF/yr for an average rain year.

Montevina Surface Water Treatment Plant (Plant) is the primary supply source for Town of Los Gatos, and the surrounding communities. The Plant was commissioned in 1970 and can treat up to 30 million gallons per day through direct filtration and chlorination. State and federal water quality requirements have become more stringent since 1970, and limitations in the existing treatment process often result in the loss of water supply. Microfiltration membrane technology was chosen to replace the current technology after evaluating water quality data, assessing regulatory drivers, and pilot testing available technologies. The \$62 million project is nearly complete and the upgraded Plant is scheduled to be brought fully online in early 2018.

Recycled Water – South Bay Water Recycling (SBWR) has been serving Silicon Valley communities since 1993 with a sustainable, high-quality water supply. SBWR was created to reduce the environmental impact of freshwater effluent discharge into the salt marshes located at the south end of the San Francisco Bay, and to help protect the California clapper rail and the salt marsh harvest mouse.

In 1997, SJW entered into a Wholesaler-Retailer Agreement with the City of San Jose to provide recycled water to SJW's existing and new customers nearby SBWR recycled water distribution facilities; whereas, the City of San Jose is the wholesaler and SJW is the retailer. At the time, the involvement of SJW was largely to assist the City in meeting its wastewater regulatory obligations. In accordance with the terms of this agreement, SJW allowed SBWR to construct recycled water pipelines in its service area, SJW would only own the recycled water meters, while SBWR would own, operate, and maintain the recycled water distribution system.

In 2010, this Wholesaler-Retailer Agreement was amended to allow SJW to construct recycled water infrastructure that would be owned, operated, and maintained by SJW. Then in 2012, this

Wholesaler-Retailer Agreement was again amended to allow SJW to construct additional recycled water infrastructure.

Summary of Existing and Planned Sources of Water – SJW and SCVWD have worked to develop a variety of local and imported water supplies to meet demands. As demands increase with the region’s growth, and imported water supplies potentially become more restricted, these planned supplies will increase in importance. In particular, groundwater, which has historically been a vital source of supply for SJW, has recently become all the more critical for SJW due to ongoing drought conditions. When weather conditions return to average historical conditions, groundwater and imported supplies are assumed to return to historical averages.

The following table shows the actual amount of water supplied to SJW’s distribution system from each source in 2015 as well as the projected amounts until 2040.

Table 7: Current and Projected Water Supplies¹ (AF/yr)

	2015	2020	2025	2030	2035	2040
SCVWD Treated Water	63,796	76,670	79,383	82,255	85,376	88,651
SJW Groundwater	37,888	54,160	56,078	58,106	60,307	62,621
SJW Surface Water	4,766	9,606	9,606	9,606	9,606	9,606
Recycled Water	1,964	4,072	6,853	8,350	8,369	8,369
Total System Demand	108,415	144,508	151,919	158,318	163,658	169,246

¹Projected potable water supply volumes based on a 10-year average (2006-2015) of usage by type and holding surface water constant @ 10-year average.

Water Supply Vulnerability

SJW has identified multiple sources of water for the Project which would provide a high quality, diverse and redundant source of supply. For added backup, SJW incorporates diesel fueled generators into its facilities system which will operate wells and pumps in the event of power outages. Since SCVWD influences over 90% of SJW’s annual water supply, SJW will continue to work with SCVWD to ensure water supply for this Project is reliable, while the impact to the existing Santa Clara Valley Subbasin is minimal.

SCVWD recommends in their 2003 IWRP that water supply sources be maintained at 95% reliability during significant water shortages that occur during multiyear droughts. To accomplish this, SJW can use less groundwater in certain areas or zones to achieve the overall balance which best meets SCVWD’s and SJW’s operational goals.

Transfer and Exchange Opportunities

SJW’s distribution system has interties with the following retailers in the San Jose area: City of Santa Clara, City of San Jose Municipal Water, City of Milpitas, and Great Oaks Water. SJW

currently has no plans to use these interties for normal system operation as they are exclusively used for potential emergency sources.

Water Supply Reliability

To assess water supply reliability it is critical to first identify constraints on water sources and compare total projected water use with expected water supply.

Constraints on Water Sources – SJW has three sources of potable water supply: groundwater, imported treated surface water and local surface water. These three sources of supply are constrained in one or more ways, driven by legal, environmental, water quality, climatic, and mechanical conditions. Additionally, there is a potential for interruption of supply caused by catastrophic events.

Table 8: Factors Resulting in Supply Inconsistency

Supply	Legal	Environmental	Water Quality	Climatic	Mechanical
Local Surface		x	x	x	x
Ground Water		x	x	x	x
SCVWD Treated Water	x	x	x	x	x

Legal - SCVWD is responsible for managing water resources in Santa Clara County, including the long-range planning for additional supplies and/or conservation needed to meet future water demands. SJW and other retailers work closely with SCVWD to coordinate the purchase of treated imported water and the extraction of groundwater from retailer-owned wells. This activity is important to the operation of the countywide water supply and distribution system and the retailers are dependent on SCVWD's long-range resource planning.

In determining the long-range availability of water, considerations must also be given to decisions at the state or federal level that are out of the SCVWD's control. SCVWD has contracts for water deliveries with both the State Water Project (SWP) and the Federal Central Valley Project (CVP). Due to flow restrictions for the protection of water quality and the habitat of fish and wildlife in the Delta, water deliveries may be reduced from previous levels. During critical dry periods the SCVWD can expect additional reductions in water deliveries. Long-range planning success depends on the SCVWD's ability to obtain adequate imported water supplies and on proper management of the local groundwater basin.

Environmental & Climatic - SCVWD contracts with the State of California to receive raw water from the California Central Valley through the State Water Project (SWP). Water supplied through this aqueduct (which originates from the Sacramento-San Joaquin Delta) may be limited because of subsidence problems which are beginning to occur in that area and due to pumping restrictions associated with the protection of endangered species. SCVWD has also contracted with the Federal Central Valley Project (CVP) to supply raw water



from the San Joaquin Valley via the Santa Clara Conduit. The reliance of water from inland sources through the SWP or the CVP is very critical; the loss of any or all of these sources due to pipe failure, levee failure, earthquake, or human intervention can have an extreme effect on SJW's water supply. Given the above factors which could result in an inconsistent water supply, it is crucial that SJW have sufficient backup wells and pumping capacity to supply customers for as long as several months solely from groundwater sources. SJW believes it has this capacity in an emergency if mandatory conservation is enacted.

Water Quality - The quality of groundwater in the basins, surface water from the Santa Cruz Mountains, or the raw water supply to SCVWD's treatment plants could decrease or be contaminated such that existing treatment facilities are not adequate to meet current drinking water standards. Contamination could cause a source of supply to become unusable until further treatment techniques are utilized, or the contamination is no longer a threat to the source of supply.

Mechanical Failures - All sources of water require mechanical equipment to bring water to the public. Mechanical failures may cause water service shutdowns until repairs are made. To reduce the occurrence of failures, SJW routinely inspects above-grade facilities at all stations. In addition, SJW has created and implemented infrastructure replacement programs for all wells, pumps, and pipelines. To reduce the impact of mechanical failures, SJW's maintenance department is staffed 24-hours, seven-days a week to respond to and repair any water related emergency.

Groundwater Supply Reliability – Groundwater supplies are often a reliable supply during normal and short-term drought conditions because they are local and their large storage retains available supply when surface flows become limited. However, groundwater supply availability does become threatened when overdraft occurs and when recharge and inflow decrease.

Some threats to groundwater supply reliability include:

- *Overdraft* – Under extended supply pressures, groundwater basins can enter overdraft conditions, which can have a series of consequences including subsidence.
- *Climate Change* – Climate change could increase the potential for overdraft by increasing demand, reducing other sources of supply, and reducing natural recharge and inflows from surface water and precipitation. Climate change is having a profound impact on California water resources, as evidenced by changes in snowpack, sea level, and river flows. These changes are expected to continue in the future and more precipitation will likely fall as rain instead of snow. This potential change in weather patterns will exacerbate flood risks and add additional challenges for water supply reliability.
- *Regional Growth* – Population growth could increase demands on groundwater supplies, potentially creating risk of overdraft. Regional growth could also increase the amount of contaminants entering groundwater basins as a result of increased urban runoff or industrial or other activities. Growth can also impact recharge areas by expanding impervious surfaces into areas that would otherwise represent entry points for surface water recharging local aquifers.

The Santa Clara Valley Subbasin is able to store the largest amount of local reserves and SCVWD, as the groundwater management agency for Santa Clara County, is tasked with maintaining adequate

storage in this basin to optimize reliability during extended dry periods. As groundwater is pumped by SJW and other retailers and municipalities in Santa Clara County, SCVWD influences groundwater pumping reductions and thus reliability through financial and management practices to protect groundwater storage and minimize the risk of land subsidence.

Imported Treated Surface Water Supply Reliability – SCVWD was founded in 1929 and is the primary wholesale water supplier for Santa Clara County. Some of their core responsibilities are to provide safe, clean water for a healthy life, environment and economy. SCVWD’s water originates from several sources including local reservoirs, the State Water Project and the federally funded Central Valley Project San Felipe Division. Water is piped into SJW’s system at various turnouts after it is treated at one of three SCVWD water treatment plants.

SCVWD’s current water supply reserves are insufficient to meet SJW needs throughout an extended drought. In addition, there are increasing concerns about the reliability of imported treated surface water during average years, driven by risks associated with climate change, reductions in imported water supplies, revenue requirements, and threats to infrastructure.

- *Climate Change* – In Santa Clara County, climate change is anticipated to decrease the frequency of precipitation events, but the intensity of precipitation events may increase. Climate change is expected to decrease imported water supplies as a result of reduced snow pack. Potential effects of climate change on Delta-conveyed imported water supply availability have been incorporated into SCVWD’s water supply projections. However, potential climate change effects on local supplies and demands were not incorporated into their current 2012 Water Supply and Infrastructure Master Plan (WSIMP) but were included in their 2015 UWMP.
- *Reductions in Imported Water Supplies* – Over the last 15 years, major changes to state and federal water project operations have resulted from regulations to protect Delta water quality and help the recovery of endangered and threatened fish species. These regulations result in a reduction of Delta exports at certain times of the year. There is a possibility that Delta exports will be further impacted by future regulations.
- *Revenue Requirements* – Increased funding will be required for SCVWD to implement a program of activities to ensure water supplies are diversified and reliable to meet current and future demands and that treated water quality standards are met.
- *Threats to Infrastructure* – SCVWD’s imported supply infrastructure must travel large distances to reach turnouts. As California is a seismically active state, infrastructure could be damaged and the result would be a disruption to water supply availability. California’s water supply infrastructure is also potentially a target for acts of terrorism.

SCVWD’s Water Supply Infrastructure Master Plan is scheduled for an update in 2017 and SJW will actively work with SCVWD to ensure the following principles are considered:

- Promote additional sources of local water supply, such as indirect potable reuse, direct potable reuse, desalination, additional conservation, and an expanded recycled water distribution system
- Coordinate operations with all retailers and municipalities to make as much surplus water as possible available for use in dry years
- Continue to pursue innovative transfer and banking programs to secure more imported water for use in dry years
- Increase public awareness about water supply issues

SCVWD's previous call for a 30 percent reduction and current call for a 20 percent reduction in water usage during this drought highlights that more investments in local water sources are necessary to ensure a reliable source of supply during multiple-dry water years.

Supply Reliability by Type of Water Year – SCVWD's Urban Water Management Plan identified average, single-dry, and multiple-dry years for water supply reliability planning. According to SCVWD, these years correspond to:

- Average Year (1922 – 2015): average supply over the hydrologic sequence of 1922 through 2015.
- Single-Dry Year (1977): Within the historic record, this was the year with the estimated lowest amount of total supply
- Multiple-Dry Years (2013 – 2015): this is a multiple dry year period that puts the most strain on the county's water supplies

Water supplies presented below are based on SCVWD's water evaluation and planning system model. According to SCVWD, this model simulates their water supply system comprised of facilities to recharge the county's groundwater basins, local water systems including the operation of reservoirs and creeks, treatment and distribution facilities, and raw water conveyance systems. The model also accounts for non-SCVWD sources and distribution of water in Santa Clara County such as imported water from San Francisco Public Utilities Commission, recycled water, and local water developed by other agencies.

Table 9: Basis of Water Year Data

Year Type	Base Year	% of Average Supply
Average Year	1922-2015	100%
Single-Dry Year	1977	100%
Multiple-Dry Years 1 st Year	2013	95%
Multiple-Dry Years 2 nd Year	2014	85%
Multiple-Dry Years 3 rd Year	2015	66%

Average Water Year – According to SCVWD, the average water year represents average supply over the hydrologic sequence of 1922 through 2015. SJW anticipates adequate supplies for years 2020 to 2040 to meet system demand under average year conditions

Table 10: Supply and Demand Comparison – Average Water Year (AF/yr) ¹

	2020	2025	2030	2035	2040
Supply	140,435	145,066	149,967	155,289	160,877
Demand	140,435	145,066	149,967	155,289	160,877
Difference	0	0	0	0	0

¹Does not include recycled water or raw water and includes demands associated with this Project

Single-Dry Water Year – The single-dry year was the year with the estimated lowest amount of total supply. Table 11 shows that supplies, with the use of reserves are sufficient to meet demands during a single-dry year through 2035. This assumes reserves are at healthy levels at the beginning of the year and that projects and programs identified in SCVWD’s 2012 WSIMP are implemented. If reserves are low at the beginning of a single-dry year, SCVWD might call for water use reductions in combination with using reserves.

Table 11: Supply and Demand Comparison – Single-Dry Water Year (AF/yr) ¹

	2020	2025	2030	2035	2040
Supply	140,435	145,066	149,967	155,289	151,308
Demand	140,435	145,066	149,967	155,289	160,877
Difference	0	0	0	0	(9,569)

¹Does not include recycled water or raw water and includes demands associated with this Project

Multiple-Dry Water Years – The multiple-dry year period used in this analysis assumes a repetition of the hydrology that occurred in 2013 through 2015, which is the multiple-dry year period that puts the most strain on the county’s water supplies. During multiple-dry year droughts, voluntary and mandatory conservation will be needed. SCVWD will continue to work on reducing multiple-dry year deficits by securing more reliable or diverse water supplies.

Table 12: Supply and Demand Comparison – Multiple-Dry Water Years (AF/yr) ¹

		2020	2025	2030	2035	2040
First Year	Supply	140,435	145,066	149,967	155,289	160,877
	Demand	140,435	145,066	149,967	155,289	160,877
	Difference	0	0	0	0	0
Second Year	Supply	125,373	144,471	138,815	132,742	131,428
	Demand	140,435	145,066	149,967	155,289	160,877
	Difference	(15,062)	(595)	(11,152)	(22,547)	(29,449)
Third Year	Supply	97,550	122,945	112,926	100,779	95,089
	Demand	140,435	145,066	149,967	155,289	160,877
	Difference	(42,885)	(22,121)	(37,041)	(54,510)	(65,788)

¹Does not include recycled water or raw water and includes demands associated with this Project

Regional Supply Reliability – SCVWD’s Ensure Sustainability water supply strategy has three key elements:

1. Secure existing supplies and facilities
2. Optimize the use of existing supplies and facilities
3. Expand water use efficiency efforts

As part of this strategy, SCVWD’s 2012 WSIMP estimates water conservation and recycling, combined, will increase from about 15 percent of the county’s water supply mix to about 26 percent by 2035. Developing these local sources and managing demands reduces reliance on imported water supplies. In addition, SCVWD is also working with multiple water agencies to investigate regional opportunities for collaboration to enhance water supply reliability, leverage existing infrastructure investments, facilitate water transfers during critical shortages, and improve climate change resiliency. Projects to be considered will include interagency interties and pipelines; treatment plant improvements and expansion; groundwater management and recharge; potable reuse; desalination; and water transfers. This program may result in the addition of future supplies for SCVWD.

Water Demand Management Measures

SJW is a signatory of the California Urban Water Conservation Council (CUWCC) and signed the CUWCC Memorandum of Understanding (MOU) in February 2006. The CUWCC is a partnership of water suppliers, environmental groups, and others interested in California water supply who have come together to agree on a set of Best Management Practices (BMPs) for water conservation in the state. Additionally, SJW has its own water-waste provisions that come into effect when there is a water shortage. The California Public Utilities Commission (CPUC) has set forth the rules regarding water waste and water shortages governing investor owned utilities such as SJW. The CPUC rule relating to this is Rule 14.1. This rule states that when there is a low level water shortage that prompts a call for voluntary conservation by customers, a list of water-waste provisions goes into effect. Rule 14.1 also has provisions for high level water shortages when mandatory conservation measures are deemed necessary.

SJW provides a full range of water conservation services to both residential and commercial customers. The cornerstone of SJW’s conservation programs is the water audit program. The audit program is an excellent method for customers to learn about ways to reduce their consumption, as well as identify and fix any leaks they may have. The audits are performed at a customer request, typically in response to a high water bill concern and/or in response to marketing efforts. Audits are performed for both residential and commercial customers.

SCVWD offers conservation programs, such as rebates for high efficiency toilets and washing machines. SJW takes advantage of all regional rebate programs and all of SCVWD’s rebate programs are offered to SJW customers. Typically customers are recommended to specific rebate programs during the course of a water audit based on a customer’s need. Customers can also access rebates directly from retail outlets when purchasing equipment such as high efficiency washing machines. SJW collaborates with SCVWD on public outreach and education including such items as customer bill inserts and conservation campaign advertising.

SJW has also increased the outreach and educational programs on outdoor water use. SJW constructed a water-smart demonstration garden that is open to the public (see photo to the right). Customers can visit the garden in person or take a virtual tour on SJW's website. SJW also developed a dedicated water wise landscaping website where customers can access a plant information database that includes hundreds of low water use plants as well as a photographic database of water wise gardens in the San Jose-Santa Clara County area. The landscaping website and the demonstration garden tour can be accessed from the SJW home web page.



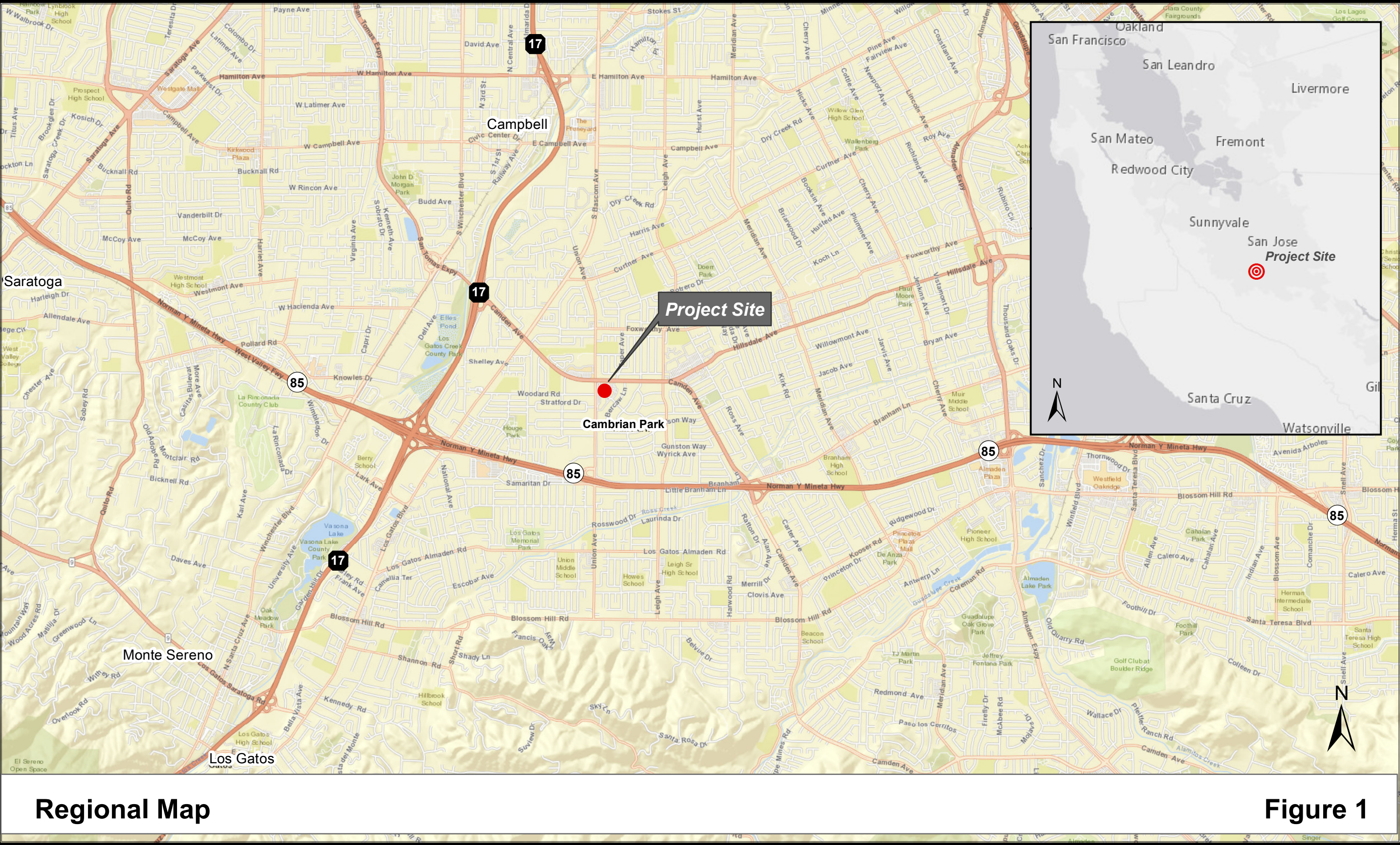
In addition to these programs, SJW engages in other activities that contribute to the overall goal of reducing water waste, but are not specifically designated as conservation or water management programs. These include SJW's meter calibration and replacement program, corrosion control program, valve exercising program and metering all service connections.

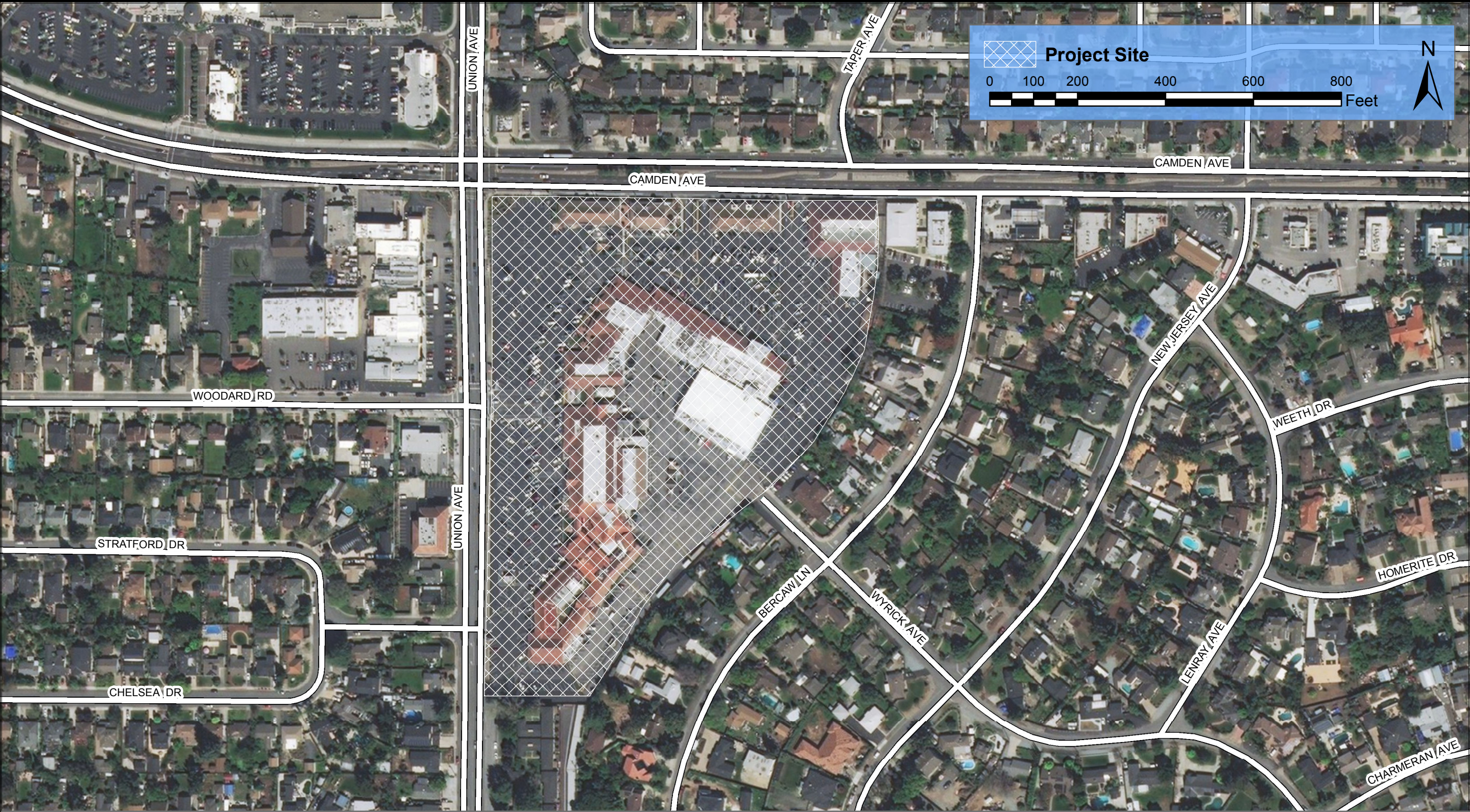
Summary

This Water Supply Assessment represents a comprehensive water supply plan for the Cambrian Park Plaza Project. In summary:

- (1) Total water usage for this Project is estimated at 352.5 acre-feet per year. However, the existing development, which is being replaced, uses an average of 9.1 acre-feet per year. Therefore, the estimated net system increase in water demand for the Project is 343.4 acre-feet per year or a 0.23% increase when compared to SJW's 2013 potable water production.
- (2) SJW currently has contracts or owns rights to receive water from the following sources:
 1. Groundwater – from the Santa Clara Valley Subbasin
 2. Imported surface water – from the Santa Clara Valley Water District
 3. Local surface water – from Los Gatos Creek, Saratoga Creek, and local watersheds
 4. Recycled water – from South Bay Water Recycling
- (3) Based on both the San Jose Water and Santa Clara Valley Water District Urban Water Management Plans, and conservation methods currently employed, there is sufficient water available to supply this Project. Also, the projected water demand for this development is within normal growth projections for water demand in SJW's system.

SJW works closely with SCVWD to manage its demands and imported water needs. After evaluating demands estimated for the Project and information summarized in this Water Supply Assessment, San Jose Water concludes that sufficient water supply exists to serve the Cambrian Park Plaza Project.





Local Map

Figure 2

From: [Jake Walsh](#)
To: [Hawkins, Kara](#)
Cc: [Le, Thai-Chau](#); [Amber Sharpe](#); [Bill Tuttle](#)
Subject: RE: Cambrian Plaza WSA Update
Date: Friday, October 29, 2021 3:34:26 PM
Attachments: [image002.png](#)

Kara,

We reviewed the proposed changes below and determined that this change does not represent a material difference in water demand and therefore San Jose Water does not believe a new Water Supply Assessment is needed. Let me know if you'd like to discuss further.

Regards,

Jake Walsh | Assistant Chief Engineer, Planning | San Jose Water Company | 1265 South Bascom Ave. | San Jose, CA 95128
Email: Jake.Walsh@sjwater.com | Tel: +1 408 279-7850

Important Notice: This email may contain confidential or proprietary information belonging to SJW Group or one of its subsidiaries. If you are not the intended recipient, the sender requests that you immediately inform him or her that you have received it and that you immediately destroy the email. Please note that the use of confidential or proprietary information when you are not the intended recipient may have legal effects. Nothing in the body of this email is intended to be an electronic signature or is intended to create a binding contract.

From: Amber Sharpe <ASharpe@davidjpowers.com>
Sent: Monday, October 25, 2021 2:30 PM
To: Jake Walsh <jake.walsh@sjwater.com>; Hawkins, Kara <Kara.Hawkins@sanjoseca.gov>
Cc: Le, Thai-Chau <Thai-Chau.Le@sanjoseca.gov>
Subject: RE: Cambrian Plaza WSA Update

CAUTION: This email originated outside the SJWG organization.

Hello Jake,

The 125,740 square footage for the assisted living space is correct (includes 110 assisted living rooms) - .

However, there *50 independent senior living residential units that have been added to the project* (which are not a part of the 125,740 square foot assisted living space – although they are within the same building).

Therefore the project would include the 125,740 assisted living space and 50 independent senior living units. Would this significantly increase the water demand compared to what was evaluated in the original WSA?

Thank you,

Amber Sharpe | Project Manager
[David J. Powers & Associates, Inc.](#)

1871 The Alameda, Suite 200 | San José, CA 95126

Direct: 408.454.3409

asharpe@davidjpowers.com

Quality Environmental Review Makes a Difference



From: Jake Walsh <jake.walsh@sjwater.com>

Sent: Monday, October 25, 2021 8:32 AM

To: Hawkins, Kara <Kara.Hawkins@sanjoseca.gov>

Cc: Amber Sharpe <ASharpe@davidjpowers.com>; Le, Thai-Chau <Thai-Chau.Le@sanjoseca.gov>

Subject: RE: Cambrian Plaza WSA Update

Kara,

Is the following "New Project" column correct?

Uses	Previous Project	New Project	Net Difference from Original
Residential	280 apartment units 84 townhomes =364 total	305 apartment units 25 townhomes 49 single family homes =379 total	+15 units
Hotel	238 rooms	229 rooms	-9 rooms
Retail	115,00 sq. ft.	58,360 sq. ft.	-56,640 Sq. Ft.
Office	150,000 sq. ft.	154,680 sq.ft.	+4,680 sq. ft.
Assisted Living	130,000 sq. ft.	125,740 sq.ft.	-4,260 sq. ft.

Regards,

Jake Walsh | Assistant Chief Engineer, Planning | San Jose Water Company | 1265 South Bascom Ave. | San Jose, CA 95128

Email: Jake.Walsh@sjwater.com | Tel: +1 408 279-7850

Important Notice: This email may contain confidential or proprietary information belonging to SJW Group or one of its subsidiaries. If you are not the intended recipient, the sender requests that you immediately inform him or her that you have received it and that you immediately destroy the email. Please note that the use of confidential or proprietary information when you are not the intended recipient may have legal effects. Nothing in the body of this email is intended to be an electronic signature or is intended to create a binding contract.

From: Hawkins, Kara <Kara.Hawkins@sanjoseca.gov>

Sent: Friday, October 22, 2021 4:07 PM

To: Jake Walsh <jake.walsh@sjwater.com>

Cc: 'Amber Sharpe' <ASharpe@davidjpowers.com>; Le, Thai-Chau <Thai-Chau.Le@sanjoseca.gov>
Subject: RE: Cambrian Plaza WSA Update

CAUTION: This email originated outside the SJWG organization.

Hi Jake,

I want to check in with you regarding the project discussed in our previous emails, below. The project has changed slightly again, whereas the assisted living facility would now include 110 assisted living rooms and 50 independent senior units. The square footage would not increase (125,740 square feet). Is this still within the capacity to fall under the previous WSA?

I am out of the office early next week, so in the event that you have questions or comments I have CC'ed our Environmental Consultant, Amber.

Thanks,
Kara Hawkins

From: Jake Walsh <jake.walsh@sjwater.com>
Sent: Friday, October 2, 2020 8:30 AM
To: Hawkins, Kara <Kara.Hawkins@sanjoseca.gov>
Subject: RE: Cambrian Plaza WSA Update

[External Email]

Kara,
Apologies for the delay. I was waiting for a response from our legal team as this was the first time I can recall CSJ making this type of request.

We reviewed the proposed changes below and the end result is estimated to be only 2 AF of additional annual water demand. This does not represent a material difference in water demand and therefore San Jose Water does not believe a new Water Supply Assessment is needed. Let me know if you'd like to discuss further.

Best Regards,
Jake

Jake Walsh, PE, PMP | Director of Capital Planning & Asset Management | San Jose Water Company | 1265 South Bascom Ave. | San Jose, CA 95128
Email: Jake.Walsh@sjwater.com | **Tel:** +1 408 279-7850 | **Fax:** +1 408 279-7889

Important Notice: This email may contain confidential or proprietary information belonging to SJW Group or one of its subsidiaries. If you are not the intended recipient, the sender requests that you immediately inform him or her that you have received it and that you immediately destroy the email. Please note that the use of confidential or proprietary information when you are not the intended recipient may have legal effects. Nothing in the body of this email is intended to be an

electronic signature or is intended to create a binding contract.

From: Hawkins, Kara <Kara.Hawkins@sanjoseca.gov>

Sent: Friday, September 18, 2020 4:02 PM

To: Jake Walsh <jake.walsh@sjwater.com>

Subject: Cambrian Plaza WSA Update

Hi Jake,

We had a WSA prepared in early 2018 for a mixed-use development called Cambrian Plaza in San Jose. The project is now back in for resubmittal with a slightly revised plan. I've included a table to compare the project that was already analyzed in the previous WSA to the newly submitted project:

Uses	Previous Project	New Project	Net Difference
Residential	280 apartment units 84 townhomes =364 total	305 apartment units 25 townhomes 49 single family homes =379 total	+15 units
Hotel	238 rooms	229 rooms	-9 rooms
Retail	115,00 sq. ft.	58,360 sq. ft.	-56,640 Sq. Ft.
Office	150,000 sq. ft.	154,680 sq.ft.	+4,680 sq. ft.
Assisted Living	130,000 sq. ft.	154,680 sq. ft.	+24,680 sq. ft.

Given that the project has changed and it has been a few years since the last WSA was approved, do you advise that we prepare and submit another WSA request? If so , please let me know and I will prepare one. The previous WSA from 2018 is attached for reference.

Best,

Kara Hawkins

Planner | City of San José

Planning, Building & Code Enforcement

kara.hawkins@sanjoseca.gov

408.535.7852

This message is from outside the City email system. Do not open links or attachments from untrusted sources.