

## CHAPTER 3

# PROJECT DESCRIPTION

---

This section provides a detailed description of the proposed *Parks Master Plan 2030*, as well as an overview of the Project location, setting, and background regarding the development of the Project.

### 3.1 PROJECT LOCATION AND SETTING

The City of Santa Cruz is located along the northern shore of Monterey Bay, approximately 75 miles south of San Francisco, 30 miles south of San Jose and 40 miles north of Monterey (see Figure 1-1). The City is roughly 15.8 square miles in area, of which 12.7 square miles is land and 3.1 square miles is water.

The City occupies a picturesque location between the Pacific Ocean and the Santa Cruz Mountains and is bordered by parks, open space, and residential uses on the north, open space lands on the west, the Monterey Bay on the south, and a portion of the unincorporated urban community of Live Oak on the east. The City's western and northern borders are mostly defined by publicly- and privately-owned open space and agricultural lands, with the Monterey Bay on the south. City-owned open space lands help establish a greenbelt around the City. Santa Cruz's location, geography, and climate are conducive to recreation. The Monterey Bay and surrounding mountains provide diverse landscapes to accommodate a wide range of recreational interests and activities, and the mild climate facilitates year-round participation.

The City's existing population as of January 1, 2019, was approximately 65,800 (California Department of Finance, 2019). According to the Parks Master Plan, the City has lower percentages of children and seniors than the state-wide averages. Other important user groups include the University of California Santa Cruz (UCSC) and tourist populations; there are more than three million tourist visits to Santa Cruz County each year.

Santa Cruz offers residents and visitors a wide range of parks, open space, beaches, trails, and recreational opportunities. The City operates and maintains a range of neighborhood parks, community/regional parks, community facilities, and recreational programs. Most of these parks, facilities and programs are operated and maintained by the City Parks and Recreation Department, although some facilities and programs are operated and organized in partnership with community organizations.

The City's parks system covers more than 1,700 acres of parks, open spaces, beaches, and recreational facilities. Existing City parks, open spaces, beaches, and recreational facilities are shown on Figure 2-1, and are further described in Section 4.9. These facilities include: 32 neighborhood parks; 6 community parks; 1 regional park (DeLaveaga Golf Course); 7 open space sites; and 4 beaches.

## 3.2 PROJECT BACKGROUND

The development of the City of Santa Cruz (City) *Parks Master Plan 2030* (hereinafter referred to as Parks Master Plan or Project) stems from goals and policies in the City's *General Plan 2030* and draws from other plans and studies conducted for specific parks, open spaces, beaches, and recreational facilities in the City. The City's General Plan acts as the long-term planning document for the City. It presents goals, policies, and actions for future development and protection of resources and is organized in state-mandated elements as required by California law. The *General Plan 2030* includes a Parks, Recreation, and Open Space chapter with goals, policies and actions to guide future development and maintenance of parks, open space and recreational facilities. This chapter of the General Plan provides a framework for the goals, policies, actions and recommendations in the Parks Master Plan to ensure consistency and comprehensive coverage. Furthermore, the General Plan specifically calls for development and maintenance of a citywide parks master plan that sets service standards and strategic goals for the development and maintenance of parks and related facilities (General Plan Action PR1.1.2).

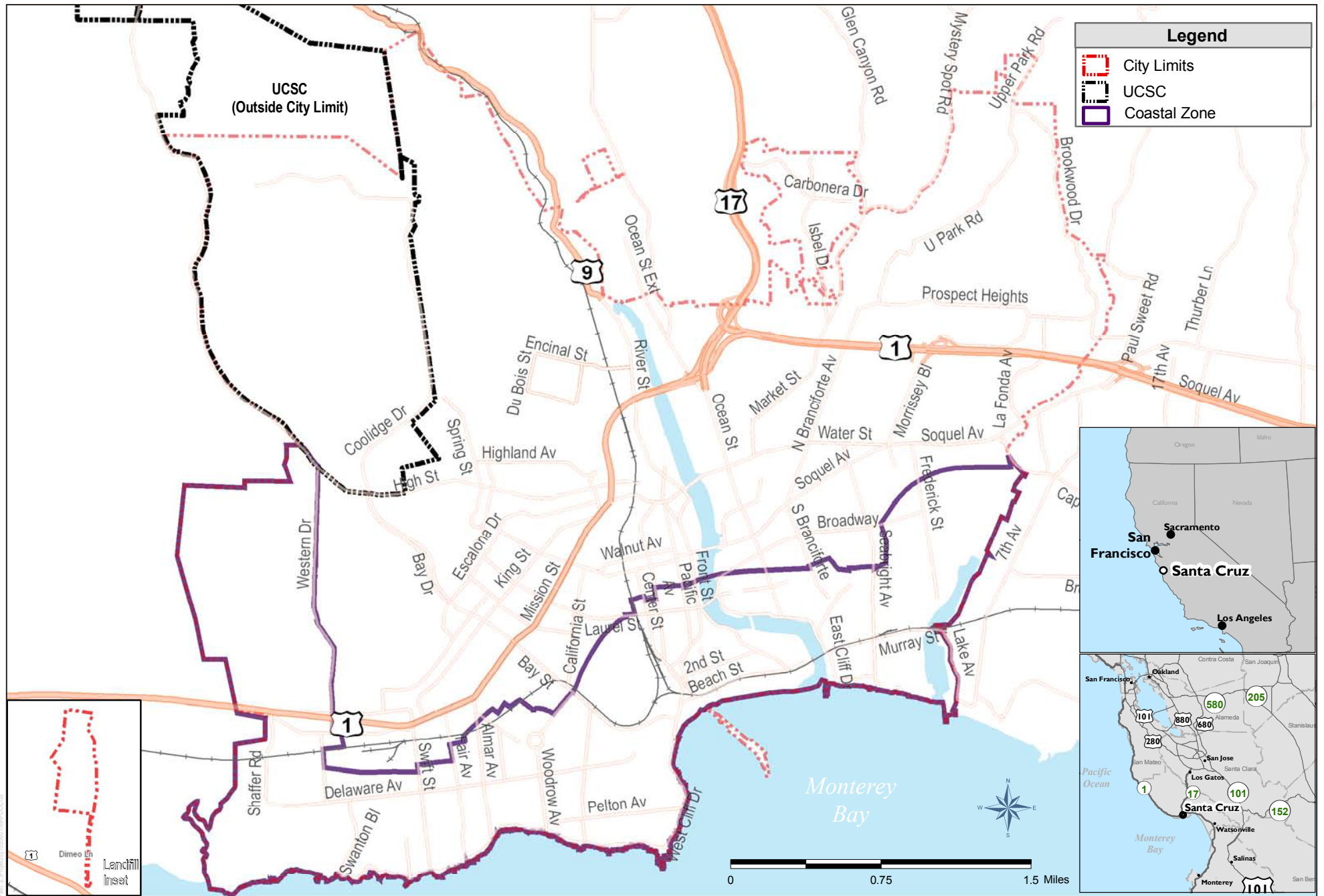
The Parks Master Plan process began in August 2014. Community meetings, open houses, surveys and stakeholder interviews were conducted to provide community outreach as part of the process of inventorying existing facilities and parks, identifying recreational needs, and providing recommendations. A number of meetings also have been held at the City's Parks and Recreation Commission and City Council.

## 3.3 PROJECT OBJECTIVES

Section 15124 of the State CEQA Guidelines indicates that the EIR Project Description shall include a statement of the objectives sought by the proposed project. A clearly written statement of objectives will help the lead agency develop a reasonable range of alternatives to evaluate in the EIR and will aid the decision makers in preparing findings or a statement of overriding considerations, if necessary. The statement of objectives should include the underlying purpose of the project.

The Parks Master Plan 2030 presents a road map to improve the existing parks system and anticipate future needs of the community while still preserving the City's unique character and environment. The Parks, Recreation, & Open Space chapter of the City of Santa Cruz General Plan 2030 provides the outline for the recommendations. The *General Plan 2030* includes the following goals related to parks and recreation:

- Goal PR1: Ample, accessible, safe, and well-maintained parks, open space, and active recreational facilities.
- Goal PR2: High-quality, affordable recreational programs, activities, events, and services for all.
- Goal PR3: Well managed, clean, and convenient public access to open space lands and coastline.
- Goal PR4: An integrated system of citywide and regional trails.



SOURCE: City of Santa Cruz

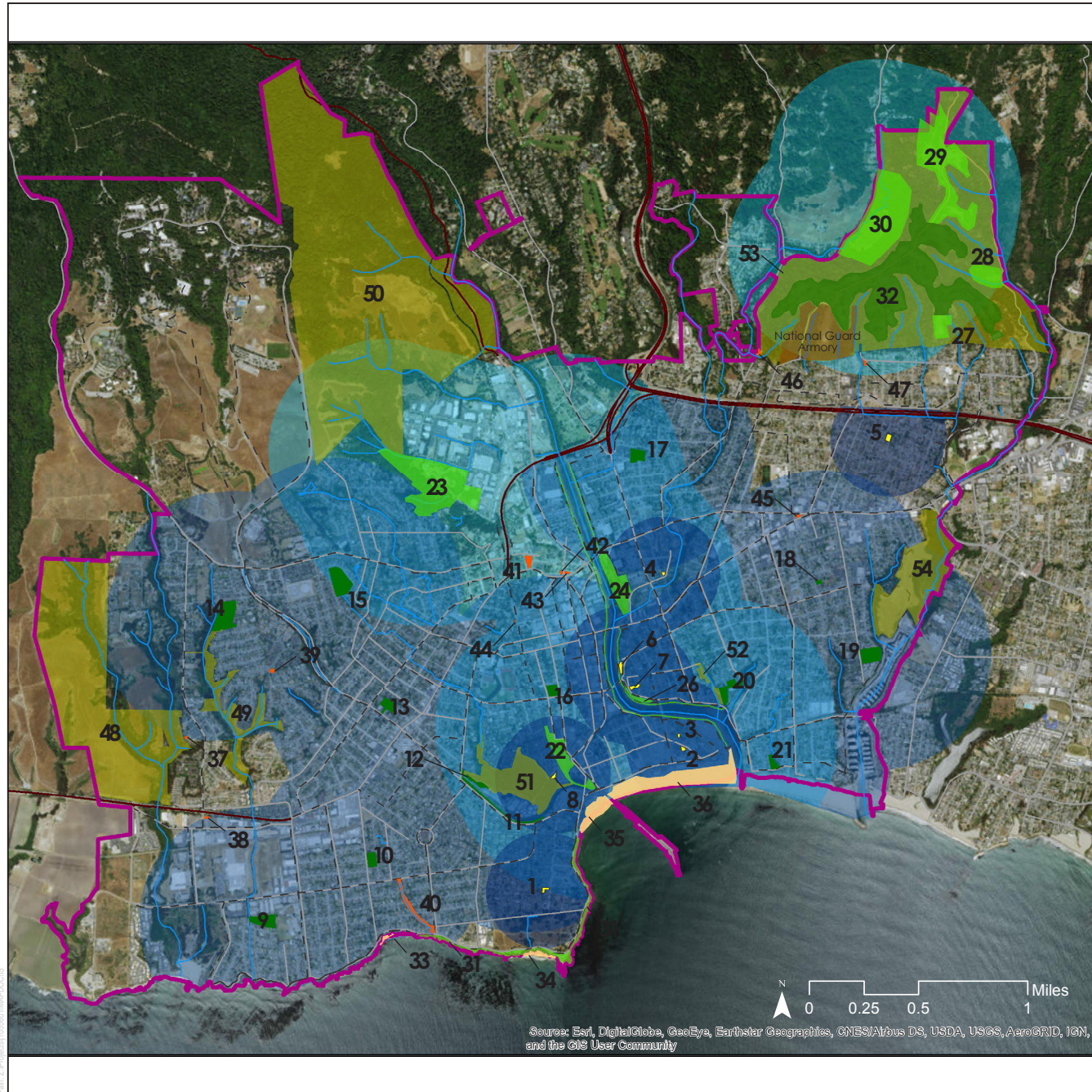
**DUDEK**

**FIGURE 1-1**  
**Regional Location**

City of Santa Cruz Parks Master Plan 2030 EIR

*INTENTIONALLY LEFT BLANK*





## Existing Park Coverage Map



SOURCE: City of Santa Cruz

**DUDEK**

**FIGURE 2-1**

Existing Parks and Open Space Lands

City of Santa Cruz Parks Master Plan 2030 EIR

*INTENTIONALLY LEFT BLANK*

The following are the Project objectives as set forth in the *Parks Master Plan 2030* and in consultation with City staff.

1. Implement the *General Plan 2030*, by providing more detailed direction and recommendations for the future development and maintenance of parks, open spaces, beaches, and recreational facilities in Santa Cruz.
2. Identify and assess the City's various existing parks, open space, and facility assets and community needs through a comprehensive public outreach effort.
3. Create a feasible vision and goals that prioritize community needs and desires for park and recreational facility expansion and improvements that creates a quality park system.
4. Provide policies and actions to support community goals and in response to needs of all user groups.
5. Develop a plan that ensures long-term stewardship, environmental protection, and sustainability of City parks.
6. Construct an implementable action plan to accomplish community goals, while establishing phasing and funding opportunities and allowing for flexibility and updates to reflect changing and emerging conditions.
7. Maintain and enhance a park system that connects the surrounding greenbelts to the Pacific Ocean, preserves and protects the City's natural heritage, enhances its cultural and recreational environments, and provides a diversity of recreational experiences that enrich lives and support a healthy community.

## 3.4 PROJECT OVERVIEW

The Parks Master Plan is a guidance document that assesses existing conditions and community needs, and guides the short- and long-term planning of parks, recreational facilities, beaches, and open space-greenbelt lands. The Parks Master Plan also will aid implementation of the City's General Plan, and the plan's recommendations are advisory. The Parks Master Plan provides an analysis of the current parks, open spaces, and recreational facilities based on an assessment of the existing assets, quantitative and qualitative data gathered from the community outreach, emerging trends in recreation, and standards for park development.

The Parks Master Plan includes goals, policies and actions for the provision of parks and recreational services. The Master Plan also provides specific recommendations for improvements at the City's individual parks, beaches, open spaces, and recreational facilities. The proposed Plan includes recommendations that, if implemented, could lead to improvements to or expansion of existing park and recreational facilities and uses and potential addition of new parks, facilities and recreational

uses. The Parks Master Plan lays out recommendations for the next 15 years but is designed to be updated over time, providing a guiding framework while allowing for adjustments based on both presently anticipated and unforeseen future needs and community desires.

## 3.5 PROJECT COMPONENTS

The proposed Parks Master Plan includes the following components; key elements are described in the following sections:

- ☐ An inventory of existing conditions, parks, open space and recreational facilities
- ☐ An assessment of emerging trends and community needs
- ☐ Goals, policies and actions
- ☐ Recommendations for specific facilities
- ☐ Implementation and funding strategies

### 3.5.1 Parks Master Plan Goals, Policies and Actions

The proposed Parks Master Plan “envisions a quality park system that connects the surrounding greenbelts to the Pacific Ocean, preserves and protects its natural heritage, enhances its cultural and recreational environments, and provides a diversity of experiences that enrich lives and support a healthy community.” To achieve this vision, the Parks Master Plan includes goals, policies, and actions that expand upon the City’s *General Plan 2030* Parks and Recreation goals and policies and that are based on community input, direction from the City Council and Parks and Recreation Commission, an understanding of current needs, and emerging trends in recreation. The goals also serve to comprehensively address six themes that emerged from the Parks Master Plan and public outreach processes, which provided a framework for the goals:

- (1) Design excellence;
- (2) Play, community health, and interaction;
- (3) Stewardship and sustainability;
- (4) Accessible and connected community;
- (5) Partnerships; and
- (6) Good governance.

The proposed Parks Master Plan 2030 includes seven goals with supporting policies and actions that address:

- I. Design
- II. Distribution
- III. Facilities
- IV. Conservation and Stewardship



## V. Safety

## VI. Connectivity and Access

## VII. Administration and Management

Table 3-1 summarizes the proposed Parks Master Plan goals, policies and actions. Overall the goals, policies and actions address the provision of additional parks and recreational facilities and new or expanded recreational uses, as well as actions to promote sustainability and avoid environmental impacts associated with park and recreational facility development or expanded uses.

**Goal I** seeks to provide attractive and sustainably maintained parks and facilities throughout the City. The accompanying policies and actions address sustainable landscaping design, resource conservation, attractive designs, and accessibility.

**Goal II** seeks to provide ample parks and facilities throughout the City, and Policy A specifically directs the City to continue to seek opportunities to purchase or lease additional parkland. Although specific locations are not identified, the Parks Master Plan identifies the following potential types of properties or areas for expanded parks:

- 1) Areas that lack existing parks and amenities in close proximity
- 2) Larger properties that can accommodate a variety of recreational facilities
- 3) Underutilized land
- 4) Higher density growth areas
- 5) Properties with significant cultural heritage

**Goal II** and supporting policies and actions also direct the City to explore opportunities for partnerships to use land within or adjacent to the City to help provide facilities to meet unmet needs. Existing and/or potential partnerships include joint-use agreements with: the Santa Cruz City School District to allow public use of outdoor recreational areas and sports fields during non-school hours; the University of California, Santa Cruz (UCSC) for potential pickleball striping at the tennis courts at 207 Natural Bridges Drive; and Santa Cruz County to provide recreational facilities on the vacant, adjacent parcel near the lawn bowling facility at San Lorenzo Park. Other actions support partnerships with California State Parks (Goal III-Policy F, Action 1c) and partnerships that would allow for public recreational uses in a permanent Kaiser Permanente Arena during the Santa Cruz Warriors off-season (Goal III-Policy H, Action 5). It should be noted that development of a permanent Kaiser Permanente Arena is not part of the Parks Master Plan recommendations. The City's Economic Development Department is conducting a market and financial feasibility study to analyze market, location, size, operations, management, economic development benefits, and other factors for locating a permanent arena.

**Goal III** seeks to provide parks and facilities to meet the existing and emerging needs of residents and visitors. In particular, Policy B and Action 1, seek to provide a range of neighborhood park uses including, but not limited to the identified uses listed below, when designed to minimize impacts to

the surrounding neighborhood. Some of these uses are recommended for development or expansion at some existing parks as further discussed in Section 3.5.2.

- Off-leash dog use areas
- Ball fields
- Skateboard parks
- Tennis courts
- Basketball court
- Ping-pong tables
- Playgrounds and tot-lots
- Climbing and exercise equipment
- Slack-lining
- Pickleball courts
- Community gardens
- Pump tracks, bocce courts
- Disc golf course
- Horseshoe pits
- Picnic areas
- Sand volleyball courts

**Goal IV** seeks to protect the City’s natural resources, native wildlife habitats and plant communities, and environment. The accompanying policies and actions are directed to maintaining biological diversity and native plant communities, implementation of restoration plans and habitat enhancement efforts, protecting natural resources and water quality, and erosion and sedimentation reduction.

**Goal V** addresses safety and enforcement concerns and seeks to maintain a safe clean and comfortable environment in all parks.

**Goal VI** seeks to provide an integrated park system, and its supporting policies and actions call for the City to continue to seek opportunities to purchase or lease additional land to enhance recreational corridors and extend network connectivity, especially properties and improvements that fill gaps within the existing trail system, expand recreational opportunities along existing corridors or provide important habitat and wildlife connections (Goal VI-Policy A, Action 1). The Master Plan also supports implementation of the Monterey Bay Sanctuary Scenic Trail<sup>1</sup> multi-use trail (Goal VI-Policy A, Action 4) and a Felton-Santa Cruz recreational trail and transportation/commuter corridor (Goal VI-Policy A, Action 7).

**Goal VII** addresses management and administration to establish, maintain, and operate parks, facilities, and programs in a manner that is cost effective and manageable while engaging the community to maximize involvement and support. Policy A, Action 2 calls for establishing annual short-term and long-term priorities for capital improvement projects and maintaining conditions assessments to help inform the prioritization process. Policy B directs the City to continue to improve community outreach and communications.

---

<sup>1</sup> The Santa Cruz County Regional Transportation Commission (SCCRTC), in association with other regional agencies, proposes construction of a Monterey Bay Sanctuary Scenic Trail (MBSST) between Santa Cruz and Monterey Counties. The MBSST network will be a multi-use system of bicycle and pedestrian users from Lover’s Point in Pacific Grove in Monterey County to Davenport in Santa Cruz County.

**TABLE 3-1: Parks Master Plan – Summary of Goals, Policies and Actions**

Goal	Policy	Actions
<b>GOAL I. Design</b> Provide attractive and sustainably maintained parks and facilities throughout the City.	A. Design, upgrade and maintain parks and facilities with sustainable features and green building best management practices.	1. Use sustainable landscaping design and maintenance to conserve water, prevent erosion and runoff, and provide habitat. 2. Practice energy conservation. 3. Practice water conservation.
	B. Design, renovate and maintain parks to be attractive and functional, increase longer-term use, optimize space, and enhance the unique identity for each park.	1. Enhance settings when renovating parks. 2. Consider design features and site furnishings that add character. 3. When feasible, replace asphalt paths with decorative, permeable surfaces. 4. Create colorful and artistic expressions. 5. Consider function of landscaping in relation to the surrounding area. 6. Ensure that new parks have at least one street frontage for visibility and access. 7. Incorporate interactive arts and interpretive signage. 8. Coordinate site furnishings, plazas, paths and features. 9. Increase bike parking. 10. Provide adequate restrooms. 11. Develop and update site materials and furnishings. 12. Maintain signage program. 13. Increase replacement of deteriorating garbage cans. 14. Invest in quality materials and newer designs and technologies.
	C. Improve accessibility for all users to all parks and facilities.	1. Improve access for disabled users. 2. Consider needs of seniors. 3. Provide fitness facilities for all users. 4. Seek additional community garden space. 5. Increase bilingual services, programs and signage.
<b>GOAL II. Distribution</b> Provide ample parks and facilities throughout the City.	A. Distribute recreation amenities evenly throughout the community.	1. Seek opportunities to purchase or lease additional parkland. 2. Explore opportunities for partnerships. 3. Evaluate all lands for development of small parks and facilities. 4. Improve Joint Use Agreements with School District.

**TABLE 3-1: Parks Master Plan – Summary of Goals, Policies and Actions**

Goal	Policy	Actions
<b>GOAL III. Facilities</b> Provide parks and facilities to meet the existing and emerging needs of residents and visitors of all ages and abilities.	A. When adding new uses to neighborhood parks, consider how the use meets unmet needs of the community in addition to meeting needs of the surrounding neighborhood.	1. Hold neighborhood meetings regarding recreational facilities.
	B. Scale recreational facilities to neighborhood parks that are compatible with the neighborhood character.	1. Provide neighborhood park uses. 2. Design considerations to include minimizing impacts of light spillover and noise and providing tree screening.
	C. Consider increasing the scale and uniqueness of each type of recreational facility located in a community park setting. Provide uses and experiences that are not common in neighborhood parks to draw use from the whole community.	None.
	D. Accommodate the need for more active sports fields for club, league and casual play.	1. Conduct athletic field feasibility study to explore locations and options for additional multi-use field space. 2. Explore/expand cooperative agreements with Santa Cruz City School District and UCSC for use of sports fields. 3. Ensure sports fields have adequate drainage and lighting. 4. Expand opportunities for informal sports play.
	E. Develop playgrounds that meet a broad range of physical, creative and social needs for all demographics.	1. Renovate and maintain playgrounds. 2. Assure accessibility and safety on all City playgrounds.
	F. Develop, improve and enhance trails to provide for a range of uses.	1. Develop, improve and enhance trails to provide a range of uses. 2. Provide opportunities for classes, tours and practice space.
	G. Accommodate new and emerging trends and satisfy unmet needs.	1. Provide activities that improve physical activity and mental health for all ages, abilities and interests. 2. Expand concessions in parks and recreational facilities.



**TABLE 3-1: Parks Master Plan – Summary of Goals, Policies and Actions**

Goal	Policy	Actions
	H. Upgrade, acquire and develop new community recreational facility buildings to accommodate new and emerging recreational trends and satisfy unmet needs.	<ol style="list-style-type: none"> <li>1. Prioritize upgrading/optimizing existing community recreational facilities.</li> <li>2. Capitalize on opportunities for partnerships and joint-use agreements.</li> <li>3. Expand partnerships and concessionaire agreements.</li> <li>4. Continue to seek community recreational facilities to host community events and programming.</li> <li>5. Consider partnerships to allow for public recreational uses in the permanent Kaiser Permanente Arena.</li> </ol>
	I. Seek opportunities to enhance off-leash dog use experiences while minimizing conflicts with other uses and wildlife.	<ol style="list-style-type: none"> <li>1. New formal off-leash dog use areas in parks will be completely fenced and located in an underutilized area.</li> <li>2. Identify a location for a fenced off-leash dog use area for the Lower Westside neighborhood.</li> <li>3. Provide amenities and features that enhance experience for dogs and owners (e.g., drinking fountains and shade structures).</li> <li>4. Consider creating smaller facilities for smaller dogs or dog training to reduce dog conflicts.</li> <li>5. Increase enforcement of off-leash and dog access laws.</li> <li>6. Clearly sign rules and etiquette to minimize conflicts.</li> <li>7. Review existing day-use access areas for domestic animals on beaches and open spaces.</li> <li>8. Consider locations for off-leash dog use near open spaces.</li> </ol>
<b>GOAL IV. Conservation and Stewardship</b> Protect the City's natural resources, native wildlife habitats and plant communities, and environment.	A. Maintain and enhance natural habitats to increase biodiversity and sustain long-term ecological function.	<ol style="list-style-type: none"> <li>1. Understand and maintain the diversity of native plant communities.</li> <li>2. Understand and maintain the diversity of native wildlife.</li> <li>3. Develop and implement restoration work plans to restore natural processes and control invasive species.</li> <li>4. Improve habitat within urban parks and facilities.</li> <li>5. Use native species.</li> <li>6. Maintain and expand tree canopy coverage and manage forest diseases.</li> </ol>

**TABLE 3-1: Parks Master Plan – Summary of Goals, Policies and Actions**

Goal	Policy	Actions
	B. Manage greenbelt and open spaces for conservation and to minimize recreational use impacts.	<ol style="list-style-type: none"> <li>1. Protect and enhance the habitat and populations of special status plant and animal species.</li> <li>2. Protect, maintain and enhance habitat features that are important to native wildlife and native plant communities.</li> <li>3. Protect water bodies, including creeks and riparian environments, from uses that would degrade value to native species.</li> </ol>
	C. Support and seek funding for long-term projects.	<ol style="list-style-type: none"> <li>1. Continue to partner with Resources Conservation District to reduce runoff, sedimentation and erosion.</li> <li>2. Pursue reclaimed water, water capture and water recharge projects to decrease erosion and sedimentation and conserve water.</li> <li>3. Continue to implement the Climate Action Plan (CAP) and Climate Adaptation Plan</li> <li>4. Continue to improve partnerships with local, state and federal agencies and organizations to address habitat, global warming, invasive species control, fishery management, and water pollution.</li> <li>5. Ensure funding is available for the long-term restoration at specific sites.</li> </ol>
	D. Provide more environmental education to the public.	<ol style="list-style-type: none"> <li>1. Provide youth with environmental education programs.</li> <li>2. Provide interpretive programs for the public.</li> </ol>
<b>GOAL V. Safety</b> Maintain a safe, clean, and comfortable environment for all park users.	A. Mitigate impacts of illegal activities on park use	<ol style="list-style-type: none"> <li>1. Use defensible space design treatments to deter illegal behaviors.</li> <li>2. Explore rules and policies regarding park uses.</li> <li>3. Develop a caretaker or park host program to help care for open spaces and community parks.</li> <li>4. Explore partnerships and programs to provide information and referrals about mental health, drug abuse and homeless services.</li> <li>5. Increase resources to remove trash and debris from illegal camping</li> </ol>

**TABLE 3-1: Parks Master Plan – Summary of Goals, Policies and Actions**

Goal	Policy	Actions
	B. Increase patrols and enforcement.	<ol style="list-style-type: none"> <li>1. Increase park ranger/police presence and interaction.</li> <li>2. Increase enforcement of park rules.</li> </ol>
<b>GOAL VI. Connectivity and Access</b> Provide an integrated park system with clean, convenient access to parks, open spaces, and the coastline.	A. Continue to integrate, expand and improve the connective and accessible network of parks, open spaces and trails.	<ol style="list-style-type: none"> <li>1. Continue to seek opportunities to purchase or lease land to enhance recreational corridors and extend network connectivity.</li> <li>2. Implement the San Lorenzo Urban River Plan and enhance and maintain the recreational value of the riverfront.</li> <li>3. Help develop and implement an integrated design, land use, recreation, cliff stabilization, and landscape plan for West Cliff and East Cliff Drives.</li> <li>4. Support and help implement and maintain the Monterey Bay Sanctuary Scenic Trail multi-use path.</li> <li>5. Acquire new open space when there are opportunities to increase access and improve public safety. Support acquisition and management of Lighthouse Field.</li> <li>6. Work with Public Works Department to help implement the Active Transportation Plan and connect major parks with smaller loop options and spur trails that connect to the bike and pedestrian system.</li> <li>7. Support a Felton-Santa Cruz recreational trail and commuter corridor.</li> <li>8. Provide and maintain trails within parks and appropriate open space areas.</li> <li>9. Develop trail head locations.</li> </ol>
	B. Protect, maintain and enhance publicly accessible coastal, riverfront and open space areas to ensure they maintain a safe, quality appearance. Provide recreational and educational experiences that reflect the unique sense of place and identity of Santa Cruz.	<ol style="list-style-type: none"> <li>1. Ensure adequate staffing levels.</li> <li>2. Evaluate existing and develop new rules, policies and programs to promote a safe and clean environment.</li> <li>3. Ensure existing facilities and site furnishings are updated and new ones are added in manner that ensures a quality appearance.</li> <li>4. Continue to partner with agencies, organizations and community members to keep coastal, riverfront, and open space areas pristine and attractive.</li> <li>5. Maintain and improve access and the recreational value of coastal, riverfront and open space areas while ensuring new</li> </ol>

**TABLE 3-1: Parks Master Plan – Summary of Goals, Policies and Actions**

Goal	Policy	Actions
		uses, facilities or site furnishings do not diminish natural resources.
<b>GOAL VII. Administration and Management</b> Establish, maintain, and operate parks, facilities, and programs in a manner that is cost effective and manageable while engaging the community in a manner that maximizes involvement and support.	A. Administer parks and recreation facilities to continue to deliver quality parks and recreation services.	1. Develop maintenance and safety standards for parks and facilities and evaluate staffing levels to achieve goals. 2. Work with Parks and Recreation Commission to establish annual and maintain short-term and long-term priorities for capital improvement projects. 3. Coordinate efforts with California State Parks and other recreation providers.
	B. Continue to improve community outreach and communication.	1. Publicize park programs and facilities.
	C. Develop a sustainable funding mechanism for the maintenance and operation of City parks, open space, beaches, and facilities.	1. Increase funding for parks. 2. Develop and implement park programs and increase volunteer efforts. 3. Consider establishment of a parks endowment fund. 4. Consider prioritizing projects which are economic generators. 5. Utilize and support Friends of Parks and Recreation. 6. Evaluate fees and use rates to reflect current costs to provide services.



### 3.5.2 Recommendations for New/Expanded Uses

Some of the Parks Master Plan policies and actions support new and expanded recreational uses and/or facilities. For many recommended new or expanded uses, specific site locations are not identified in the Master Plan, and, in some cases additional study is recommended in order to identify suitable locations. The Parks Master Plan supports consideration of the following types of facilities after additional studies are conducted in the future to further evaluate potential uses and site locations.

- **Athletic Fields:** Goal III-Policy D, Action 1 calls for conducting an athletic field feasibility study to explore locations and options for additional multi-use field space (e.g., locations which could accommodate soccer, football, lacrosse, rugby, field hockey, baseball, and softball) and the use of synthetic turf to increase the duration of play.
- **Bike Parks and Mountain Bike Facilities:** Goal III-Policy G, Action 1l, calls for development of more bike parks, pump tracks, and jump facilities and features to meet a variety of skill levels. Goal III-Policy F, Action 1 calls for consideration of spurs from multi-use trails to enable mountain bikers to reach more advanced features and terrain and a technical downhill trail.
- **Community Gardens:** Community garden space is supported in higher-density or lower-income areas (Goal 1-Policy C, Action 4), on the east side of the San Lorenzo River and in the Beach area (Goal III-Policy G, Action 1c), and is suggested for consideration at specific locations (Round Tree Park, Star of the Sea Park, and Beach Area neighborhood).

It is noted that numerous comments on the January 2018 IS/MND indicated support to make the Beach Flats community garden permanent. The Parks Master Plan recommends that the City continue to pursue a permanent community garden space for the Beach area as part of the recommendations for the Poets Park and Beach Flats Community Garden, and includes actions that directs the City to seek opportunities for community garden space, particularly on the east side of San Lorenzo River and in the Beach Area as noted above.

- **Dog Facilities:** Goal III-Policy I and supporting actions directs the City to seek opportunities to enhance off-leash dog use experiences while minimizing conflicts with other park uses and wildlife. Action 1 indicates that new formal off-leash dog use areas will be completely fenced and located in an underutilized area of a park. Action 2 calls for identifying a location for a fenced off-leash dog use area in the Lower Westside neighborhood. The Master Plan also includes recommendations for improvements or addition of dog facility amenities, i.e., shade structures and seating at the following existing facilities: Branciforte Dog Park, Frederick Street Park, Mimi de Marta Park, Ocean View Park, Pacheco Dog Park, Sgt. Derby Park, and University Terrace.

The Parks Master Plan also calls for increased enforcement of off-leash and dog access laws (Goal III-Policy 1, Action 5) and review of the existing day-use access areas for domestic

animals onto beaches and open spaces with consideration of creation of a licensing program to manage off-leash dog use (Goal III-Policy 1, Action 7). At Mitchell's Cove, the Master Plan includes a recommendation to consider programs and enforcement to ensure that off-leash dog use does not overwhelm the small beach area.

- **Drone Course:** The proposed plan calls for consideration of the establishment of a drone course (Goal III-Policy G, Action 1j), but the Master Plan does not propose a location or provide a description of facilities that might be considered. Discussions with City staff indicate that this recommendation stems from an interest to provide a dedicated area and regulate this type of use. This type of facility would be for recreational use of small drones to provide a course for operating these devices, which are small (approximately one foot in length) and do not emit any sounds. Currently there are no City regulations regarding use of drones in the City.
- **Expanded Concessions:** Goal III-Policy g, Action 2a calls for continued evaluation and monitoring of locations of mobile food vendors to determine whether these uses should be improved or expanded.
- **Playgrounds.** Potential opportunities for new or expanded playground areas are recommended at Central Park, Garfield Park, Harvey West Park, DeLaveaga Park, Main Beach, San Lorenzo Park, Sgt. Derby Park, and University Terrace Park.
- **Pickleball Facility:** Goal III-Policy G, Action 1g calls for the identification of a location for a pickleball facility with 6-10 courts and/or smaller facilities that can be located in different areas of the City. Goal II-Policy A, Action 2 calls for exploring partnerships to enhance joint-use agreements to provide facilities to meet unmet needs, listing the UCSC tennis courts at 207 Natural Bridges Drive as a potential opportunity. Other potential sites to locate a pickleball facility that are identified for further consideration include the following parks: Lower DeLaveaga Park and Washington Grove, Frederick Street Park, Sgt. Derby Park, San Lorenzo Park, and Star of the Sea Park.
- **Tennis Courts:** The proposed plan supports consideration of adding a tennis court facility on the east side of the San Lorenzo River (Goal III-Policy G, Action 1f).
- **Trails:** Goal II-Policy F, calls for enhancement of trail programs, trails, and infrastructure. Action 1 seeks to “develop, improve, and enhance trails to provide for a wide range of uses.” Actions 1b and 1j call for expansion of the trail network and connections, including creation of mountain bike spurs from multi-use trails. However, Action 1a calls for evaluation of new trail uses through a public process to determine if they are appropriate for a specific location. Goal VI-Policy A, Action 6 calls for connecting major parks throughout the City with smaller loop options and spur trails that connect to the bike and pedestrian system through the City and to the regional network, and Goal VI-Policy A, Action 8 call for provision and maintenance of trails within parks and appropriate open space areas. Furthermore, Goal III-Policy F, Action 1a

calls for evaluation of new trail uses through a public process to determine if they are appropriate for a specific open space area, which would include collection of usage data on existing trails and a study of impacts to wildlife and habitat to inform the decision-making process.

Considering opportunities for new and/or expanded trails and trail connections are recommended to be considered further within the following existing open space areas:

- *Arroyo Seco Canyon*: The Master Plan recommends improved connections to adjacent neighborhoods, which could include formalizing the exiting ad-hoc trail connections from neighborhoods, but the Plan also indicates that additional neighborhood input is needed before moving forward with this recommendation. Specific locations are not identified.
- *DeLaveaga Park – Wilderness Area*: The Master Plan recommendations include consideration of expanding the multi-use trail network and improving connectivity throughout the park. Potential expansion of the multi-use trail network would be considered utilizing existing fire roads and ad-hoc trails. The Plan also recommends consideration of a separate downhill mountain biking facility or skill building area. Specific alignment locations are not identified in the *Parks Master Plan 2030*, although the text in the chapter on facility recommendations indicates that a new trail could link the historic zoo to the west of Prospect Heights along DeLaveaga Park Drive. However, it is noted that the existing adopted DeLaveaga Park Master Plan identifies a trail network throughout the park, including a loop trail around the park.
- *Jessie Street Marsh*: The Master Plan recommendations include improvement of the connection from the marsh to the Santa Cruz Riverwalk.
- *Moore Creek Preserve*: The Master Plan recommends a new trail, but does not include a description of location or type of trail.
- *Pogonip Open Space*: Master Plan recommendations call for implementation of the Sycamore Grove interpretive trail. This trail is included in the adopted *Pogonip Master Plan*, and impacts for this trail were evaluated in the Pogonip Master Plan EIR.

The Parks Master Plan recommendations include looking at modifications to the existing *Pogonip Master Plan* with conducting a trails assessment to evaluate existing trail conditions and use issues and to identify ways to improve access, recreational enjoyment, and connectivity. According to the Parks Master Plan, the assessment would help inform the determination of whether or not future trail modifications or improvements are appropriate and provide for a range of uses (hiking, horseback riding, mountain biking). As part of the process, the City would create clearer maintenance standards, identify use conflicts and solutions, develop a signage and educational program, assess long-term maintenance costs associated with any future improvements, and evaluate potential environmental impacts and mitigations through the CEQA process.

### 3.5.3 Specific Facility Recommendations

The Parks Master Plan does support and/or include recommendations for new or expanded uses or facilities in some parks, primarily within community parks and open space areas, which are discussed in section 3.5.2. The Parks Master Plan also contains recommendations and action items for specific parks, open spaces, beaches, and community and recreational facilities along with detailed descriptions of amenities at each existing site. Most recommendations consist of minor improvements, the addition or replacement of site amenities and small structures. However, there are some recommendations for new structural development, new parking areas, and/or the continued implementation of resource management programs. Appendix B provides a summary of key recommendations at existing park and recreational facility sites.

The Parks Master Plan also recommends partnering with other stakeholder departments to develop and implement an integrated design, land use, recreation, cliff stabilization, and landscape plan for West Cliff and East Cliff Drives to enhance public access, safety, preservation, and recreational enjoyment along the coastline. This recommendation also is part of the City's General Plan and Local Coastal Program (LCP).

#### New/Expanded Facilities at Existing Parks

Major new or expanded uses or facilities recommended in the Parks Master Plan at existing parks are summarized as follows.

- **DeLaveaga Park:**
  - Audrey Stanley Grove – New off-season uses when Santa Cruz Shakespeare is not in production, but the Master Plan does not specify the type or frequency of off-season uses,
  - Golf Course – Implementation of the adopted DeLaveaga Golf Course Master Plan, which includes a new clubhouse<sup>2</sup> and golf course and drainage improvements,
  - Lower Park – Potential new parking and pedestrian bridge over Branciforte Creek to connect the George Washington Grove area with the baseball and sports field area, and
  - Wilderness – Consideration of locating a play area or other recreational use in the historic zoo area to the west of Prospect Heights.

---

<sup>2</sup> While a new clubhouse is identified in the 2002 Golf Course Master Plan, it is noted that the existing clubhouse is undergoing substantial renovations, and a new clubhouse is not envisioned during the timeframe of the Parks Master Plan.



- **Harvey West Park:** Creation of a small amphitheater at Wagner Grove and potential relocation of Ranger Station<sup>3</sup> to another location, but a specific location is not identified.
- **Main Beach:** The Parks Master Plan recommends consideration of adding a seasonal tot lot and bike/valet bike parking near Cowell Beach, but does not propose a specific size, location, type of facility, or structures that may be included in a seasonal tot lot.
- **Pogonip Open Space:** The Parks Master Plan recommends restoration and renovation of the Pogonip clubhouse for various uses, such as events, weddings, community center, or winery<sup>4</sup>. It is noted that the adopted Pogonip Master Plan calls for restoration of the clubhouse for use as a staging area for educational programs, a meeting and retreat center, and a site for special events.

Recommendations also include consideration of a caretaker residence, enhanced restoration efforts, including native plant restoration, renovation of cattle grazing infrastructure and grazing, site improvements that are included in the adopted Pogonip Master Plan, including implementation of the Sycamore Grove interpretive trail, a trail assessment, and potential new parking area near the Emma McCrary trailhead on Golf Club Drive.

- **San Lorenzo Park:** Increase events, a potential permanent seasonal food truck court, and the potential addition of unspecified recreational facilities on county-owned property.
- **Sgt. Derby Park:** Potential expansion of the skate park, tennis/pickleball facilities, and addition of a par course.
- **University Terrace Park:** Consideration as an opportunity for a mini soccer field.

### **New/Renovated Structures or Parking at Existing Parks**

The Parks Master Plan also includes some recommendations for new or renovated structures and new or expanded parking. These include the following:

- **Restrooms:**
  - Potential new restrooms at Sgt. Derby Park, University Terrace Park, and Westlake Park
  - Restroom renovation at DeLaveaga Park

---

<sup>3</sup> It is noted that since preparation of the Parks Master Plan, the Park rangers have relocated to the City Police Department.

<sup>4</sup> This was envisioned as potential wine tasting venue within the Pogonip Clubhouse.

- **New Structures:**

- *DeLaveaga Park*: Permanent restroom, dressing room and small concession areas at the Audrey Stanley Grove amphitheater<sup>5</sup>
- *Pogonip Open Space*: Addition of a caretaker residence
- *Santa Cruz Wharf Yard (Depot Park)*: Consider facility improvements such as a workshop and storage structure

- **Potential Structural Renovations:**

- *Civic Auditorium*: Interior improvements to renovate the interior of the facility as an arts, cultural, and entertainment venue
- *DeLaveaga Golf Course Clubhouse*: New clubhouse, which is included in the adopted DeLaveaga Golf Course Master Plan. However, the facility is currently being remodeled, and according to City staff, a new structure would not be pursued during the 2030 timeframe of the Parks Master Plan.
- *Louden Nelson Community Center*: Interior remodeling and upgrades
- *Pogonip Clubhouse*: Restore or renovate existing structure

- **Consideration of Creation of Parking:**

- *DeLaveaga Park*: Lower DeLaveaga Park
- *Moore Creek Preserve*: Potential addition of a parking area off of Highway 1
- *Pogonip Open Space*: Potential new parking area near the Emma McCrary trailhead on Golf Club Drive

### 3.5.4 Implementation and Funding Strategies

The Park Master Plan addresses management and administration to establish, maintain, and operate parks, facilities, and programs in a manner that is cost effective and manageable while engaging the community to maximize involvement and support. The proposed plan examines possible funding mechanisms available in California for municipal parks and recreation acquisition, improvements, and on-going operations and maintenance costs. The City has several existing sources of funds to pay for capital projects, including park dedication requirements and a park and recreation facilities tax. Other potential funding sources identified in the plan include grants, community benefits programs, bonds, new or expanded local taxes, land-based financing programs, enhanced infrastructure financing district, and charitable contributions. Goal IV-Policy C directs the City to support and seek funding for long-term projects. Goal VI-Policy C calls for development of a sustainable funding mechanism for the maintenance and operation of City parks, open space, beaches and facilities, and supporting actions identify ballot initiatives, expanded partnerships with private organizations, maintenance

---

<sup>5</sup> An application for a Design Permit to construct a 5,500 square foot multi-purpose building to replace existing trailer at the amphitheater has been submitted to the City's Planning and Community Development Department.

agreements with other entities, a parks endowment fund, or other alternative financing as potential options to augment Parks and Recreation Department funding.

The Parks Master Plan's Implementation section indicates that many action items will be ongoing or can be accomplished in a shorter time frame with available resources, but others will require long-term planning. The Plan indicates that an Action Plan will be maintained to help guide broader priorities and actions that will be a separate, but complementary document, to the Parks Master Plan 2030. It will be updated and maintained with input from the Parks and Recreation Commission and direction from the City Council. The Action Plan will include actions that are the highest priority for the City to pursue. A Draft Action Plan has been prepared from the Parks Master Plan based on the Parks and Recreation Commission's ranking of highest priority actions and City Council's acceptance of the Action Plan pending environmental review and is included in Attachment C.

*INTENTIONALLY LEFT BLANK*