



County of Santa Barbara Planning and Development

Glenn S. Russell, Ph.D., Director

Dianne Black, Assistant Director

April 22, 2016

Vincent Armenta, Chair, Santa Ynez Band of Mission Indians
Julie Lynn Tumamait-Stennsleie, Chair, Barbareño/Ventureño Band of Mission Indians
Mia Lopez, Chair, Coastal Band of the Chumash Nation

**RE: SB 18 Consultation – Oasis Center (Key Site 18), Orcutt
Case No.14GPA-00000-00020**

Dear Native American Tribal Representatives:

Consistent with Government Code § 65352.3, Santa Barbara County Planning and Development (P&D) invites you to participate in an SB 18 consultation regarding the Oasis Center (Key Site 18) General Plan Amendment (GPA). The project site is zoned Recreation (REC) with an underlying land use designation of Recreation/Open Space. The proposed GPA would amend the Orcutt Community Plan to remove APN's 105-020-063 and -064 from the designated open space area, and allow for the construction of the Oasis Meeting Facility/Senior Center. The GPA includes revising Key Site 18, Policy KS18-1, Development Standard KS18-1, and Figure KS18-1.

***DevStd KS18-1:** The entire site, with exception of the residential and commercial areas noted in Policy KS18-1 above, and lots 63 and 64 for non-profit meeting facilities under the REC zone (see figure KS18-3 The Oasis Center Site Masterplan), shall remain in natural, undeveloped open space. On APN 105-020-022, the open space shall include the area extending 50 feet from the top of the northern bank of Orcutt Creek. No development other than the proposed park, retention basin, and Class I bike path/multi-use trail shall be permitted within the open space.*

The project site is bounded by Foxenwood Lane on the east, Clark Avenue on the south, commercial development which fronts on Clark Avenue on the west, and generally by Orcutt Creek on the north. The portion of the project site north of Orcutt Creek would remain in open space as would the undeveloped parcels between the project site and the Southpoint residential development to the north. The site is currently undeveloped. A map illustrating the site location is attached.

A records search at the Central Coast Information Center (CCIC) at the University of California, Santa Barbara (UCSB) identified that the parcel has been the subject of at least two archaeological surveys:

- SR-00319: L. Spanne, 1979. An Archaeological Evaluation for the "Orcutt 13" Residential Developments County of Santa Barbara. This survey covered the entire project area. No significant archaeological or historic materials were observed in the surveyed area.
- SR-01801: G. Toren and L. Santoro, 1995. Phase I Archaeological Survey for the Orcutt Community Plan (a much broader area). This survey covers the entire project area, in addition to multiple areas located outside the two project parcels and the 2000-foot search radius. This broader study also did not identify significant cultural resources on the project site.

We invite you to participate in the GPA process to provide input on the location of any tribal cultural places and the potential impact, if any, of the proposed project on this site. P&D would appreciate early notification of your intentions regarding participation in a consultation regarding this project. Please direct your response regarding this invitation to:

Glenn S. Russell, Ph.D., Director
Planning and Development
123 E. Anapamu Street
Santa Barbara, CA 93101
(805) 568-2085
grussell@co.santa-barbara.ca.us

According to Government Code § 65352, you have 90 days from receipt of this invitation to respond; however, we would very much appreciate receiving an earlier response if you wish to commence with consultation. We recognize that completion of the consultation process, if initiated, may require more than 90 days. However, if no response is received by July 25, 2016, we will conclude that you have declined this opportunity to consult on the subject GPA application, and the process will proceed accordingly.

Thank you for your time and attention to this matter.

Sincerely,

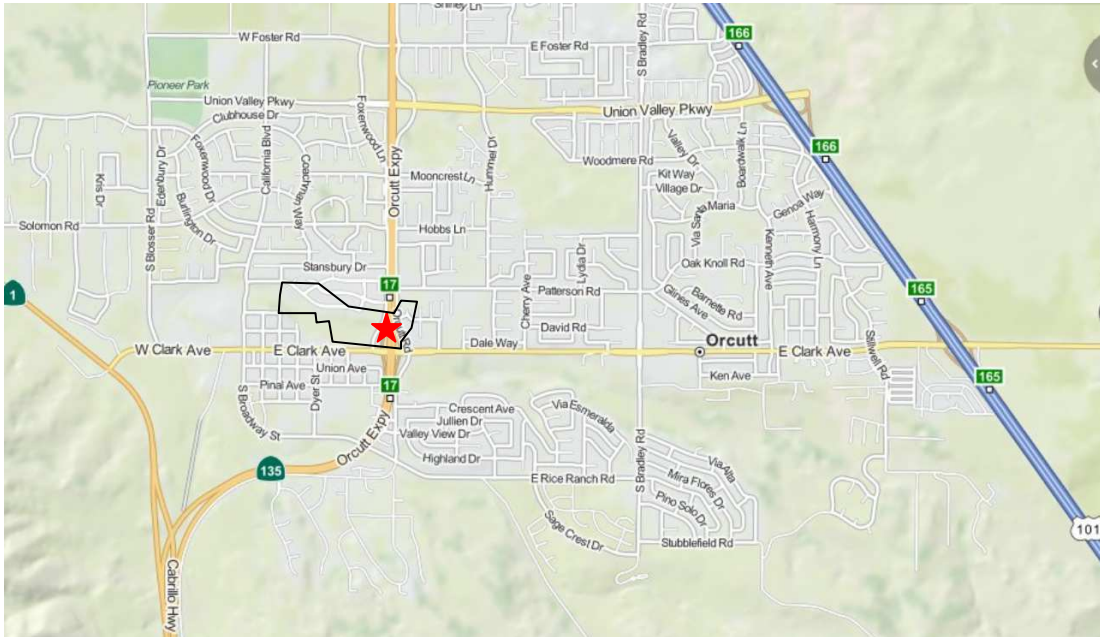


GLENN S. RUSSELL, Ph.D., Director
Planning and Development

Enclosures: Project site location map, aerial, Orcutt Community Plan Key Site 18 sheet, project site plan

cc: Santa Ynez Band of Mission Indians, Vincent Armenta, Chairperson, P.O. Box 517, Santa Ynez, CA 93460 (hard copy and email at varmenta@santaynezchumash.org)
Barbareño/Ventureño Band of Mission Indians, Julie Lynn Tumamait-Stennslie, Chair, 365 North Poli Avenue, Ojai, CA 93023 (hard copy and email at jtumamait@hotmail.com)
Coastal Band of Chumash Nation, Mia Lopez, Chairperson (email only @ cbcn.nahc.sb@gmail.com)
Dianne Black, Director of Development Services
Matt Schneider, Director of Long Range Planning
Natasha Campbell, Planner, Development Review Division
John Zorovich, Development Review Division – North
Joyce Gerber, Planner, Development Review Division
Vivek Harris, 195 S. Broadway, Suite 207, Santa Maria, CA 93455
Doug Dougherty, OASIS Inc., P.O. Box 2637, Santa Maria, CA 93457
Larry Myers, Executive Secretary, Native American Heritage Commission

VICINITY MAP



AERIAL PHOTO



MEETING CENTER LOCATION WITHIN ORCUTT COMMUNITY PLAN KEY SITE 18

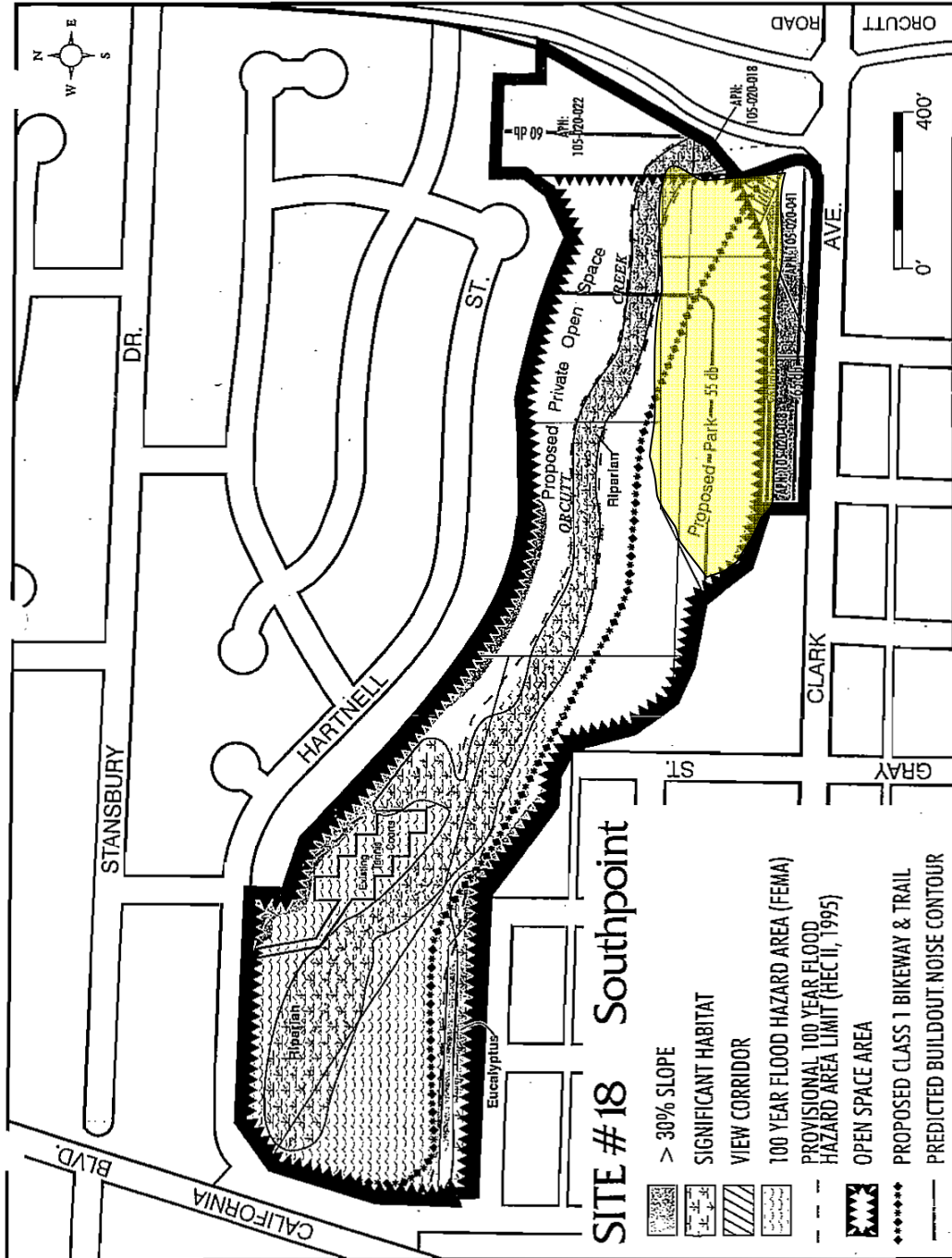


Figure V610 1

SITE PLAN FOR RELATED OASIS CENTER CONDITIONAL USE PERMIT REQUEST

