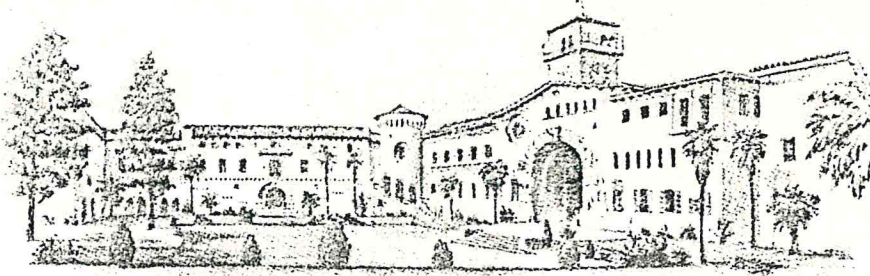


COUNTY OF SANTA BARBARA

123 E. ANAPAMU ST.
SANTA BARBARA,
CALIFORNIA 93101
AREA CODE 805
963-7115



VERNON BUGH
Assistant Director
(Technical Services)

EDWARD J. MARINI
Assistant Director
(Facilities Management)

DEPARTMENT OF PUBLIC WORKS

CHARLES F. WAGNER
Director

Honorable Board of Supervisors
County of Santa Barbara
County Administration Building
105 East Anapamu Street
Santa Barbara CA 93101

Re: Tract No. 12,679
Unit No.1
(6063)

Gentlemen:

RECOMMENDATION

Approve the Final Map of Tract No. 12,679, Unit No. 1. Determine that the division and development of the property in the manner set forth on the Final Map will not unreasonably interfere with the free and complete exercise of the easements owned by Chevron, U.S.A., Inc., Et. Al. and that the signatures of said parties be omitted per Section 66436 (c) (1) of the Government Code as such easements cannot ripen into a fee. And also, determine that the signatures of A. Caetano Domingos, Et. Al. owners of all oil, minerals, and hydrocarbons, not be required per Section 66436 (c) (3) of the Government Code.

DISCUSSION

This office has received the Final Map of Tract No. 12,679, Unit No.1 located on the east side of Hartnell Road, west side of Orcutt Expressway, and approximately 135 feet south of Stansbury Drive, Orcutt area, in the east Fifth Supervisorial District, and is satisfied that the map is technically correct, conforms to the approved Tentative Map, or any approved alterations thereto, and complies with all applicable laws and regulations.

All departments concerned with the processing of subdivision maps have certified that the Final Map is ready for Bond Approval and that all required cash deposits and bonds have been deposited with the County Clerk.

This office is in receipt of letters from Laguna County Sanitations District and California Cities Water Company, the entities which will provide sewer and water services for Tract No. 12,679, Unit No.1, which state that all arrangements have been made for the services for the tract.

Honorable Board of Supervisors
April 21, 1981
Page 2

The tentative Map was approved by the Board July 16, 1979, with a time extension being granted October 13, 1980.

We have executed the County Surveyor's certificate on the original tracings as provided in Section 66442 of the California Government Code and are transmitting them herewith for the Board's approval.

SPECIAL INSTRUCTIONS

After the Boards approval, the Final Map of Tract No. 12,679, Unit No. 1, will be held for Santa Barbara County Flood Control and Water Conservation District acceptance of the dedication of a Flood Control Easement as shown on said Tract Map.

Yours very truly,



VERN BUGH
Assitant County Surveyor

APF: ea

cc: Supervisors (5) Press (3) County Clerk (2)
L. Parrish
San Clemente Group, Inca, 647 Camino De Los Mares,
San Clemente CA 92672
Fred Schott and Assoc. 200 Suburban Road,
San Luis Obispo CA 93401
Susan Trescher - County Counsel
Britt A Johnson - Planning
Charles F. Wagner - Public Works