



Gavin Newsom
Governor

STATE OF CALIFORNIA
Governor's Office of Planning and Research
State Clearinghouse and Planning Unit



Kate Gordon
Director

Memorandum

Date: March 12, 2020
To: All Reviewing Agencies
From: Scott Morgan, Director
Re: SCH # **2016081061**
Veterans Industrial Park 215 (VIP 215) Project

The Lead Agency has corrected some information regarding the above-mentioned project. Please see the attached materials for more specific information. All other project information remains the same.

cc: Jeffrey M. Smith
March Joint Powers Authority
14205 Meridian Parkway, Suite 140
Riverside, CA 92518

Appendix E

Cultural Resources

E-1 Cultural Resources Assessment (Confidential)

E-2 Supplemental Cultural Resources Assessment (Confidential)

E-3 Paleontological Resource Assessment

November 28, 2016

Ms. Kathy Hoffer
Development Manager
Hillwood Investment Properties
901 Via Piemonte, Suite 175
Ontario, CA 91764
Transmitted via email to Kathy.Hoffer@hillwood.com

***RE: Paleontological Resource Assessment for the March Inland Port Airport Parcel D2 Project,
Riverside County, California***

Dear Ms. Hoffer:

At the request of Hillwood Investment Properties, LLC, on behalf of March Joint Power Authority (MJPA), Applied EarthWorks, Inc. (Æ) performed a paleontological resource assessment for the March Inland Port Airport Parcel D2 Project (Project), Riverside County, California. The scope of work included a museum records search, a literature and geologic map review, and preparation of this technical memorandum (memo). This assessment was performed to satisfy the requirements of the California Environmental Quality Act (CEQA) and was conducted in accordance with Riverside County regulations and the professional standards and guidelines set forth by the Society of Vertebrate Paleontology (SVP) (2010).

Project Description

The MJPA proposes to develop approximately 142 acres within Parcel D2: Non-Aviation (Assessor's Parcel Numbers [APN] 294-150-009, 294-170-005, 295-300-008, and 294-180-038), which is located approximately 2 miles south of State Route 60 (SR-60) between Interstate 215 (I-215) and Heacock Street near the city of Moreno Valley, in unincorporated Riverside County, California. The Project area encompasses portions of Township 3 South, Range 4 West, Sections 25-26 and 35-36 on the Riverside East and Steele Peak, CA 7.5' U.S. Geological Survey quadrangles (Attachment 1).

Parcel D2 consists of land that is not currently zoned and does not provide for direct access to flying facilities. As such, the initial phase of development for Parcel D2 will include speculative non-aviation industrial buildings that will allow for a mix of logistics center uses that could support wholesale, storage, distribution, manufacturing and/or assembly centers. Because the proposed concept does not include aviation related facilities, any future inclusion of aviation on Parcel D2 will require supplemental entitlements and environmental review. The current plan consists of approximately 2,389,670 square feet of facilities, which may include one or more buildings. Such building or buildings will include features that are typical of logistic centers, such as office space, dock doors and trailer parking facilities. Currently, there is no improved access to Parcel D2. Primary access to Parcel D2 will be by way of an extension of the I-215 off ramp at Van Buren Boulevard and secondary access will be by way of a frontage road running west from the primary access to Western Way, and then an extension



of Western Way to access Harley Knox Boulevard. Domestic water and storm drain improvements are also proposed within the Project footprint.

Regulatory Context

Paleontological resources cannot be replaced once they are destroyed. Therefore, paleontological resources are considered nonrenewable scientific resources and are protected under the CEQA. Specifically, in Section V(c) of Appendix G of the CEQA Guidelines, the “Environmental Checklist Form,” the question is posed: “Will the project directly or indirectly destroy a unique paleontological resource or site or unique geologic feature?” In order to determine the uniqueness of a given paleontological resource, it must first be identified or recovered (i.e., salvaged). Therefore, mitigation of adverse impacts to paleontological resources is mandated by CEQA.

In addition, paleontological resources are addressed under the Multipurpose Open Space Element of the Riverside County General Plan (2008), policies OS 19.8 and 19.9, which state the following:

1. **OS 19.8:** Whenever existing information indicates that a site proposed for development may contain biological, paleontological, or other scientific resources, a report shall be filed stating the extent and potential significance of the resources that may exist within the proposed development and appropriate measures through which the impacts of development may be mitigated;
2. **OS 19.9:** When existing information indicates that a site proposed for development may contain paleontological resources, a paleontologist shall monitor site grading activities, with the authority to halt grading to collect uncovered paleontological resources, curate any resources collected with an appropriate repository, and file a report with the Planning Department documenting any paleontological [County of Riverside Planning Department, 2008, p. OS-37].

The SABER Policy (Safeguard Artifacts Being Excavated in Riverside County) enacted in October 2011 by the Riverside County Board of Supervisors mandates that any paleontological resources found or unearthed in the County of Riverside be curated at the Western Science Center in the city of Hemet. This new policy will be included as an amendment to the Multipurpose Element of the General Plan Update.

Paleontological Resource Potential

Absent specific agency guidelines, most professional paleontologists in California adhere to the guidelines set forth by the SVP (2010) to determine the course of paleontological mitigation for a given project. These guidelines establish protocols for the assessment of the paleontological resource potential of underlying geologic units and outline measures to mitigate adverse impacts that could result from project development. Using baseline information gathered during a paleontological resource assessment, the paleontological resource potential of the geologic unit(s) (or members thereof) underlying a Project area can be assigned to one of four categories defined by SVP (2010). These categories include high, undetermined, low, and no paleontological resource potential.



Methodology

In order to assess whether a particular project area has the potential to contain significant fossil resources at the subsurface, it is necessary to review published geologic mapping to determine the geology and stratigraphy of the area. Geologic units are considered to be “sensitive” for paleontological resources if they are known to contain significant fossils anywhere in their extent. Therefore, a search of pertinent local and regional museum repositories for paleontological localities within and nearby the project area is necessary to determine whether fossil localities have been previously discovered within a particular rock unit. For this Project, a museum records search was conducted at the Los Angeles County Museum of Natural History (LACM) on February 9, 2016. In addition, the Project area was placed on the Riverside County’s (2008) Paleontological Sensitivity Map in order to determine whether or not it overlies areas of high, low, or undetermined sensitivity.

Resource Context

The proposed Project area is located in the alluvial fan complex within the geologically complex Peninsular Ranges geomorphic province (Morton and Miller, 2006). A geomorphic province is a region of unique topography and geology that is distinguished from other regions based on its landforms and diastrophic history (Norris and Webb, 1976). The Peninsular Ranges are a northwest-southeast oriented complex of blocks that extend 125 miles from the Transverse Ranges and Los Angeles Basin to the tip of Baja California. The Peninsular Ranges are bounded to the east by the Colorado Desert and range in width from 30 to 100 miles (Norris and Webb, 1976). The proposed Project area is situated within the Perris Block, a relatively stable rectangular structural unit positioned between the Santa Ana Mountains of the Peninsular Ranges and the northwest-southeast trending San Jacinto Fault zone. This fault zone demarcates the northeastern extent of the Perris Block. The proposed Project area is located approximately 7 miles southwest of the San Jacinto Fault zone in the Perris Valley (Morton and Miller, 2006). The geology in the vicinity of the Project area is dominated by Cretaceous plutonic igneous rocks of the Peninsular Ranges Batholith and widespread Quaternary alluvial fan and valley deposits (Morton and Miller, 2006). The Project area is mapped at a scale of 1:24,000 by Morton and Cox, (2002), Morton (2002), Dibblee and Minch (2003), and Morton and Matti (2002), and 1:100,000 by Morton and Miller (2006) and is entirely underlain by Middle to Early Pleistocene very old alluvial fan deposits (Qvof). The geology and paleontology of these units is described below and depicted in Attachment 1.

Very old alluvial fan deposits in the vicinity of the Project area emanate from the western Box Springs Mountains and the southern San Gabriel and San Bernardino mountain ranges; this geologic unit varies widely across the Peninsular Ranges area but is composed of orangey-brown or medium to dark reddish-brown, very coarse, moderately to well consolidated silt, sand, gravel, and conglomerate (Morton and Miller, 2006). Bedding features are often obscured throughout the vertical extent of the unit, but laterally discontinuous lenses of conglomerate or lithic arkose are sometimes present. Clasts of this unit are derived from exposures of Pelona Schist, a thick sequence of intermediate-grade, layered metamorphic rocks derived from Cretaceous marine sedimentary and volcanic rocks located in the vicinity of the Project area (Morton and Miller, 2006). A paleomagnetic study of a core from the very old alluvial fan deposits at March Air Force Base located the Brunhes-Matuyama magnetic reversal boundary (approximately 780,000 years before present) at 3 meters bgs (Morton et al., 1997). During the cultural resource field reconnaissance survey, conducted by Æ’s Associate Archaeologist Joshua Smallwood and Associate Paleontologist Mathew Knauss, the very old alluvial fan deposits were confirmed to be



present at approximately 2 meters bgs, extending to approximately 4 meters bgs, within a drainage cut that transects the Project area. These Pleistocene sediments consisted of moderately to well consolidated, tan to dark brown, moderately sorted mud (silt-dominated) to fine-grained sand, with scant granules. The deposits are variably massive to weakly bedded, with alternating mud and granular-sand beds (1 to 5-centimeter thickness) when a bedded fabric is present, with evidence of root casts, comprised of light tan mud. Below 4 meters bgs, sediments consist of tan to dark brown mud and fine-grained, well to moderately sorted arkosic sand. According to the Paleontological Sensitivity Map in the Riverside County General Plan (2008), the geologic units underlying the Project area are noted as High B, indicating that they have a high potential for significant fossil resources at shallow depth.

Pleistocene age alluvial, fluvial, and lacustrine deposits have proven to yield scientifically significant paleontological resources throughout Southern California from the coastal areas to the inland valleys (Springer et al., 2009). Pleistocene age alluvial deposits in the vicinity of the Project area are potentially highly fossiliferous and localities identified within these deposits have yielded significant fossils of extinct Ice Age mammals (Scott, 2012). Southeast of the Project area near Lakeview, a diverse assemblage of fossil resources have been recovered including *Mammuthus* sp. (mammoth); *Smilodon* sp. (sabre-toothed cat); *Equus* sp. (extinct horse); *Bison* sp. cf. *B. antiquus* (bison); and numerous small mammals, reptiles, invertebrates, and plant remains (Reynolds and Reynolds, 1991; Springer et al., 2009). Further south, the largest known open-environment, non-asphaltic late Pleistocene fossil assemblage has been documented in Diamond and Domenigoni valleys. Discovered during excavations of the Diamond Valley Lake, which is approximately 18 miles southeast of the Project area and within a similar depositional environment as the Project area, this locality has yielded nearly 100,000 identifiable fossils representing over 105 vertebrate, invertebrate, and plant taxa. The vertebrate taxa recovered includes reptiles, such as frogs, turtles, and lizards; birds, such as robins, swallows, jays, ravens, hawks, and ducks; small mammals, such as rabbit, squirrel, mice, and weasels; and large mammals, such as fox, bear, coyote, deer, bison, mammoths, mastodons, and ground sloths (Springer et al., 2009). The invertebrate taxa recovered include ostracodes, snails, termites, slugs, beetles, and bivalves and the plant taxa recovered include well-preserved diatoms, pollen, and wood debris (Springer et al., 2009; Anderson et al., 2002).

Records Search Results

The LACM reports that there are no previously recorded vertebrate fossil localities in the Project area; however, museum collections record at least three vertebrate localities identified from within very old Quaternary alluvial deposits in Riverside County from within the vicinity of the Project area (McLeod, 2016; Table 1). Recovered specimens include extinct horse and camel; depth of recovery was not provided. The results of the museum records search and literature review are presented in Table 1.

Findings and Recommendations

Based on the literature review and museum records search results, the paleontological sensitivity of the Project area was determined in accordance with the SVP's (2010) sensitivity scale. In addition, a review of Riverside County's (2008) paleontological sensitivity map indicated that the Project area was underlain by geologic formations with a high paleontological sensitivity (High B). As a result, the older alluvial fan deposits (Qvof) are determined to have a high sensitivity for fossil resources, and



Table 1
Vertebrate Localities Reported from within Very Old Quaternary Alluvium near the
Project Area in Riverside County

Locality No.	Geologic Unit	Age	Taxa
LACM 4540	Unspecified Quaternary-age deposits	Pleistocene	<i>Equus</i> sp.
LACM 5168	Unspecified Quaternary-age deposits	Pleistocene	<i>Equus</i> sp.
LACM 6059	Unspecified Quaternary-age deposits	Pleistocene	<i>Camelops hesternus</i> (camel)

Source: McLeod, 2016.

paleontological resource management, including construction monitoring, is recommended (see Attachment 1).

In general, the potential for a given project to result in negative impacts to paleontological resources is directly proportional to the amount of ground disturbance associated with the project; thus, the higher the amount of ground disturbances within geological deposits with a known paleontological sensitivity, the greater the potential for negative impacts to paleontological resources. Since this Project entails grading and excavating the Project area, new ground disturbances are anticipated. Consequently, the likelihood of impacting scientifically significant fossils because of Project development is high. Therefore, a qualified paleontologist should be retained to develop and implement a Paleontological Resource Mitigation Plan. The following mitigation measures have been developed in accordance with SVP guidelines; if implemented, these measures will satisfy the requirements of CEQA. These measures have been used by professional paleontologists for many years and have proven to be effective in reducing or eliminating adverse impacts to fossil resources as a result of private and public development projects throughout California and elsewhere.

Worker's Environmental Awareness Training

Prior to the start of the proposed Project activities, all field personnel will receive a worker's environmental awareness training module on paleontological resources. The training will provide a description of the fossil resources that may be encountered in the Project area, outline steps to follow in the event that a fossil discovery is made, and provide contact information for the Project Paleontologist and on-site monitor(s). The training will be developed by the Project Paleontologist and may be conducted concurrent with other environmental training (e.g., cultural and natural resources awareness training, safety training, etc.).

Paleontological Mitigation Monitoring

Prior to the commencement of ground-disturbing activities, a qualified and professional paleontologist will be retained to prepare and implement a Paleontological Resource Mitigation Plan for the proposed Project. Full-time monitoring will be required during ground-disturbing activities that exceed 2 meters bgs within areas deemed to have a high paleontological resource potential. Part-time monitoring, or spot checking, will be required during shallow ground-disturbances (i.e., 2 meters bgs or shallower) to determine if the underlying sensitive geologic units are being impacted by construction, and at what depth. Monitoring will entail the visual inspection of excavated or graded areas and trench sidewalls. In the event that a paleontological resource is discovered, the monitor will have the authority to temporarily



divert the construction equipment around the find until it is assessed for scientific significance and collected.

Monitoring should include matrix screening for the presence of microfossils, the frequency of which will be determined by the Project Paleontologist. Monitoring is largely a visual inspection of sediments; therefore, the most likely fossils to be observed will be macrofossils of vertebrates (bones, teeth, tusk) or invertebrates (shells). At the discretion of the Project Paleontologist, the monitor will periodically screen sediments to check for the presence of microfossils that can be seen with the aid of a hand lens (i.e., microvertebrates). Should microvertebrate fossils be encountered during the screening process, then bulk matrix samples will be taken for processing off site. For each fossiliferous horizon or paleosol, a standard sample (4.0 cubic yards or 6,000 pounds) will be collected for subsequent wet-screening per SVP (2010) guidelines.

Fossil Preparation, Curation, and Reporting

Upon completion of fieldwork, all significant fossils collected will be prepared in a properly equipped paleontology laboratory to a point ready for curation. Preparation will include the careful removal of excess matrix from fossil materials and stabilizing and repairing specimens, as necessary. Following laboratory work, all fossils specimens will be identified to the lowest taxonomic level, cataloged, analyzed, and curated. The fossil specimens must be delivered to the accredited museum repository identified on the permit and receipt(s) of collections will be submitted to the client. This delivery should be made as soon as practical but no later than 60 days after all fieldwork is completed. The cost of curation is assessed by the repository and will be the responsibility of the client. At the conclusion of laboratory work and museum curation, a Paleontological Mitigation Report will be prepared describing the results of the paleontological mitigation monitoring efforts associated with the Project. The report will include a summary of the field and laboratory methods, an overview of the Project area geology and paleontology, a specimen inventory of all taxa recovered (if any), an analysis of fossils recovered (if any) and their scientific significance, the signed receipt of confirmation of museum deposition, and recommendations. The report should be submitted to the designated repository within 45 days following completion of monitoring and laboratory work.

It has been a pleasure assisting you with this Project. If you have any questions, please do not hesitate to contact Jessica DeBusk at jdebusk@appliedearthworks.com or (626) 578-0119.

Sincerely,

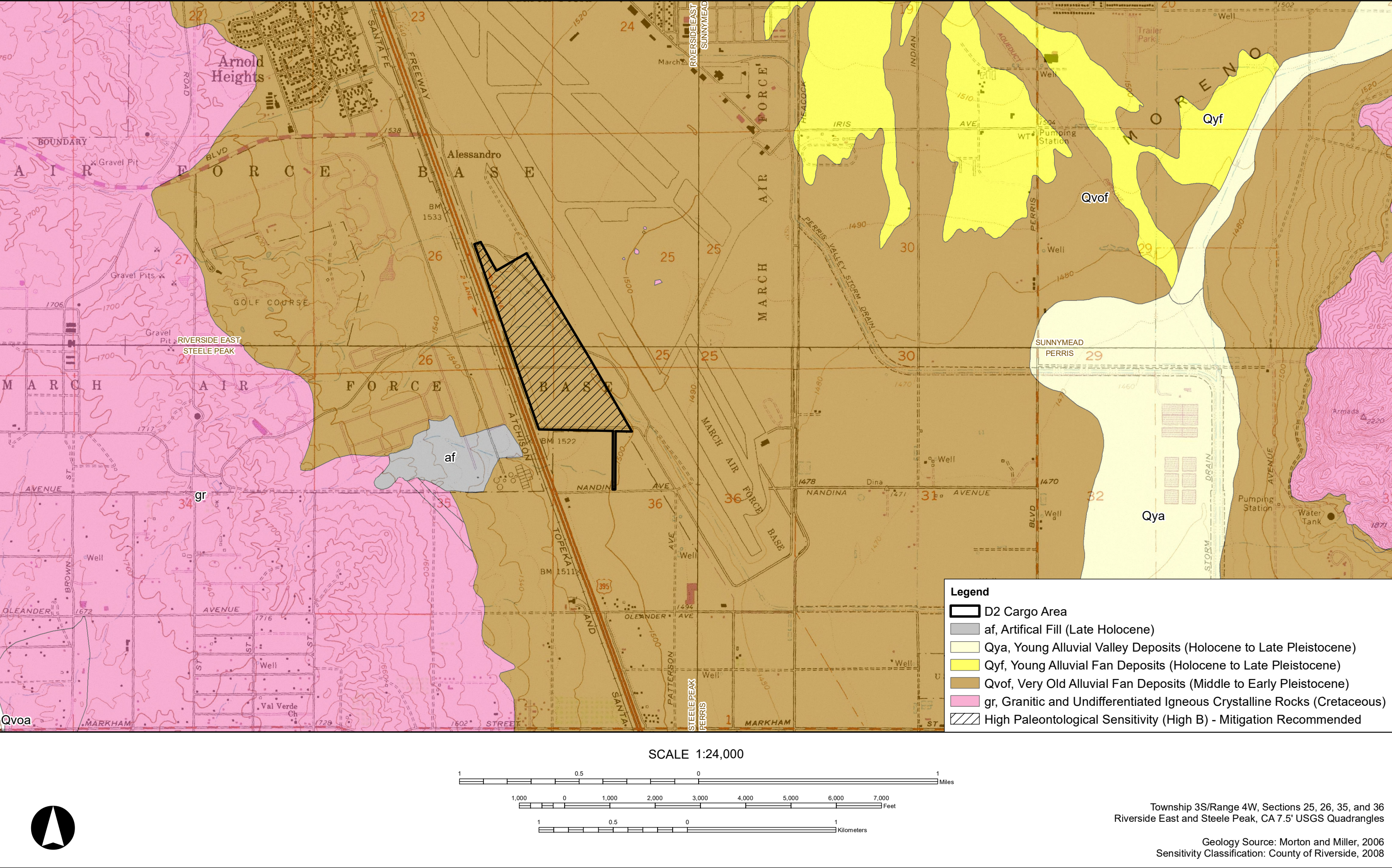
Heather Clifford
Associate Paleontologist
Applied EarthWorks, Inc.

Jessica DeBusk
Paleontology Program Manager
Applied EarthWorks, Inc.



References

- Anderson, R.S., Power, M.J., Smith, S.J., Springer, K., and Scott, E., 2002, Paleocology of a middle Wisconsin deposit from southern California: *Quaternary Research*, v. 58, p. 310-317.
- Association of Environmental Professionals (AEP), 2012, California Environmental Quality Act (CEQA) Statutes and Guidelines, http://ceres.ca.gov/ceqa/docs/CEQA_Handbook_2012_wo_covers.pdf (accessed January 2016).
- Dibblee, Jr., T. W., Minch, J. A., 2003, Geologic map of the Perris 7.5' quadrangle, Riverside County, California, DF-112, scale 1:24,000.
- McLeod, S. A., 2016, Unpublished museum collections records. Natural History Museum of Los Angeles County.
- Morton, D. M., 2002, Geologic map of the Steele Peak 7.5' quadrangle, Riverside County, California: U.S. Geologic Survey, Open-File Report 01-449, scale 1:24,000.
- Morton, D. M., Cox, B. F., 2002, Geologic map of the Riverside East 7.5' quadrangle, Riverside County, California: U.S. Geologic Survey, Open-File Report OF-01-452, scale 1:24,000.
- Morton, D. M., Matti, J. C., 2002, Geologic map of the Sunnymead 7.5' quadrangle, Riverside County, California, Open-File Report OF-2001-450, scale 1:24,000.
- Morton, D.M., and Miller, F.K., 2006, Geologic map of the San Bernardino and Santa Ana 30' x 60' quadrangles, California: U.S. Geological Survey, Open-File Report OF-2006-1217, scale 1:100,000.
- Morton, D. M., Cox, B. F., Matti, J. C., Hillhouse, J. W., Jachens, R. C., 1997, Regional geology and structure in the area of March Air Force Base, southern California: U.S. Geological Survey Administrative Report 97-013A.
- Norris, R.M., and Webb, R.W., 1976, Geology of California. John Wiley & Sons, New York.
- Reynolds, R. E., Reynolds, R. L., 1991, The Pleistocene beneath our feet: Near-surface Pleistocene Fossils from inland southern California basins. San Bernardino County Museum Association Quarterly, v. 38 (3 and 4), p. 41-43.
- Riverside County Planning Department, 2008, County of Riverside General Plan, Updated 2008, General Plan Amendment No. 960, Public Review Draft, March 2014, <http://planning.rctlma.org/ZoningInformation/GeneralPlan.aspx> (accessed January 2016).
- Society of Vertebrate Paleontology (SVP), 2010, Standard Procedures for the Assessment and Mitigation of Adverse Impacts to Paleontological Resources. Society of Vertebrate Paleontology Impact Mitigation Guidelines Revision Committee.
- Springer, K., Scott, E., Sagebiel, J.C., and Murray, L.K., 2009, The Diamond Valley Lake Local Fauna - Late Pleistocene Vertebrates from Inland Southern California, in Albright, L.B., III, ed., Papers on Geology, Vertebrate Paleontology, and Biostratigraphy in Honor of Michael O. Woodburne, Museum of Northern Arizona Bulletin 65, Flagstaff, Arizona.



Attachment 1. Geology and Paleontological Sensitivity in the D2 Aviation Project Area, part of the Hillwood March Inland Port Authority Project.

E-4 Supplemental Paleontological Resource Assessment



Rincon Consultants, Inc.

301 9th Street, Suite 109
Redlands, California 92374

909 253 0705 OFFICE AND FAX

info@rinconconsultants.com
www.rinconconsultants.com

October 11, 2019
Rincon Project No: 18-06260

Kathy Hoffer
Development Director
HILLWOOD
2855 Michelle Drive, Suite 180
Irvine, California 92606
Via email: Kathy.Hoffer@hillwood.com

Subject: Supplemental Paleontological Resource Assessment for the Veterans Industrial Park 215 Project, Riverside County, California

Dear Ms. Hoffer:

Rincon Consultants, Inc. (Rincon) was retained by HILLWOOD to perform a paleontological resource assessment for the Veterans Industrial Park 215 Project (supplemental project) in Riverside County, California. Rincon understands a previous paleontological resource study was completed by Applied EarthWorks, Inc. (Æ) (Clifford and DeBusk 2016) for the original Veterans Industrial Park 215 project (previously, the March Inland Port Airport Parcel D2 project), but that subsequent modifications have resulted in the expansion of offsite improvement areas. The technical memorandum identifies the geologic units that may be impacted by development of the supplemental project, determines the paleontological sensitivity of those geologic units, assesses potential for impacts to paleontological resources from development of the supplemental project, and recommends mitigation measures to avoid or mitigate impacts to scientifically significant paleontological resources, as necessary.

This paleontological resource assessment has been prepared to support environmental review under the California Environmental Quality Act (CEQA). The March Joint Powers Authority is the CEQA Lead Agency for the project. Figures are included in Attachment A.

Project Location and Description

The supplemental project area is an element of the Veterans Industrial Park 215 project, which is located on vacant, unimproved land approximately 2 miles south of State Route 60 between Interstate 215 and Heacock Street near the city of Perris, in unincorporated Riverside County, California. The total project area encompasses approximately 142.5 acres within the March Inland Port Airport and is depicted within Township 3 South, Range 4 West, Sections 25-26 and 35-36 on the Riverside East and Steele Peak, CA 7.5-minute United States Geological Survey (USGS) quadrangles (Figure 1, Attachment A). The current site plan is provided in Figure 2 (Attachment A).

The Veterans Industrial Park 215 project includes two land use components: 1) a Specific Plan which would allow for construction of up to 2,219,852 square feet of industrial/logistics uses, and 2) the construction of two industrial buildings for the storage and/or consolidation of manufactured goods



prior to their distribution to retail locations or other warehouses. The project site also includes an extension of Van Buren Boulevard, west and south of the project site.

Specific offsite improvements associated with the study include the following:

- Approximately 3 acres of new roadway improvements for the extension of Western Way between the project site and Nandina Avenue
- Expansion of an approximately 720-foot-long section of Van Buren Boulevard from an existing two-lane to four-lane roadway immediately north of the project site
- Installation of a new 18-inch water line within the existing right-of-way of Western Way between Nandina Avenue and Harley Knox Boulevard
- An interim channel structure and associated access road encompassing approximately 1.7 acres will also be constructed onto MARB property.

Regulatory Setting

Fossils are remains of ancient, commonly extinct organisms, and as such are nonrenewable resources. The fossil record is a document of the evolutionary history of life on earth, and fossils can be used to understand evolutionary pattern and process, rates of evolutionary change, past environmental conditions, and the relationships among modern species (i.e. systematics). The fossil record is a valuable scientific and educational resource, and individual fossils are afforded protection under federal, state, and local environmental laws, where applicable.

California Environmental Quality Act

Paleontological resources are protected under CEQA, which states, in part, that a project will “normally” have a significant effect on the environment if it, among other things, will disrupt or adversely affect a paleontological site except as part of a scientific study. Specifically, in Section VII (f) of Appendix G of the State CEQA Guidelines, the Environmental Checklist Form, the question is posed, “Will the project directly or indirectly destroy a unique paleontological resource or site or unique geologic feature”. To determine the uniqueness of a given paleontological resource, it must first be identified or recovered (i.e., salvaged). Therefore, mitigation of adverse impacts, to the extent practicable, to paleontological resources is mandated by CEQA.

CEQA does not define “a unique paleontological resource or site.” However, the Society of Vertebrate Paleontology (SVP) has defined a “significant paleontological resource” in the context of environmental review. The SVP defines a Significant Paleontological Resources as:

“...fossils and fossiliferous deposits, here defined as consisting of identifiable vertebrate fossils, large or small, uncommon invertebrate, plant, and trace fossils, and other data that provide taphonomic, taxonomic, phylogenetic, paleoecologic, stratigraphic, and/or biochronologic information. Paleontological resources are typically to be older than recorded human history and/or older than middle Holocene (i.e., older than about 5,000 radiocarbon years).”

The loss of paleontological resources that meet the criteria outlined above (i.e., a significant paleontological resource) would be considered a significant impact under CEQA, and the CEQA lead



agency is responsible for ensuring that impacts to paleontological resources are mitigated, where practicable, in compliance with CEQA and other applicable statutes.

California Public Resources Code

Section 5097.5 of the Public Resources Code (PRC) states:

No person shall knowingly and willfully excavate upon, or remove, destroy, injure or deface any historic or prehistoric ruins, burial grounds, archaeological or vertebrate paleontological site, including fossilized footprints, inscriptions made by human agency, or any other archaeological, paleontological or historical feature, situated on public lands, except with the express permission of the public agency having jurisdiction over such lands. Violation of this section is a misdemeanor.

As used in this PRC section, “public lands” means lands owned by, or under the jurisdiction of, the state or any city, county, district, authority, or public corporation, or any agency thereof. Consequently, public agencies are required to comply with PRC 5097.5 for their own activities, including construction and maintenance, as well as for permit actions (e.g., encroachment permits) undertaken by others.

Methods

Rincon evaluated the paleontological sensitivity of the geologic units that underlie the supplemental project area based on a review of published geologic maps and scientific literature concerning known fossils in those geologic units. In addition, Rincon reviewed the results of the record search from the previous paleontological resources assessment (Clifford and DeBusk 2016) to determine whether fossils have been recorded in the supplemental project area or nearby. Following the literature and geologic map review, this report assessed the paleontological sensitivity of the geologic units underlying the supplemental project area and determined the potential for impacts to significant paleontological resources, if any.

Paleontological Resource Potential

The potential for impacts to significant paleontological resources is based on the potential for ground disturbance to directly impact paleontologically sensitive geologic units. The SVP (2010) has defined paleontological sensitivity and developed a system for assessing paleontological sensitivity, as discussed below.

Significant paleontological resources are fossils or assemblages of fossils that are unique, unusual, rare, diagnostically important, or are common but have the potential to provide valuable scientific information for evaluating evolutionary patterns and processes, or which could improve our understanding of paleochronology, paleoecology, paleophylogeography, or depositional histories. New or unique specimens can provide new insights into evolutionary history; however, additional specimens of even well represented lineages can be equally important for studying evolutionary pattern and process, evolutionary rates, and paleophylogeography. Even unidentifiable material can provide useful data for dating geologic units if radiocarbon dating is possible. As such, common fossils (especially vertebrates) may be scientifically important, and are therefore considered highly significant.

The SVP (2010) describes sedimentary rock units as having high, low, undetermined, or no potential for containing significant nonrenewable paleontological resources. This criterion is based on rock units



within which vertebrate or significant invertebrate fossils have been determined by previous studies to be present or likely to be present. While these standards were specifically written to protect vertebrate paleontological resources, all fields of paleontology have adopted these guidelines, which are given here verbatim:

- I. **High Potential (sensitivity).** Rock units from which significant vertebrate or significant invertebrate fossils or significant suites of plant fossils have been recovered are considered to have a high potential for containing significant non-renewable fossiliferous resources. These units include but are not limited to, sedimentary formations and some volcanic formations which contain significant nonrenewable paleontological resources anywhere within their geographical extent, and sedimentary rock units temporally or lithologically suitable for the preservation of fossils. Sensitivity comprises both (a) the potential for yielding abundant or significant vertebrate fossils or for yielding a few significant fossils, large or small, vertebrate, invertebrate, or botanical and (b) the importance of recovered evidence for new and significant taxonomic, phylogenetic, ecologic, or stratigraphic data. Areas which contain potentially datable organic remains older than Recent, including deposits associated with nests or middens, and areas which may contain new vertebrate deposits, traces, or trackways are also classified as significant.
- II. **Low Potential (sensitivity).** Sedimentary rock units that are potentially fossiliferous, but have not yielded fossils in the past or contain common and/or widespread invertebrate fossils of well documented and understood taphonomic, phylogenetic species and habitat ecology. Reports in the paleontological literature or field surveys by a qualified vertebrate paleontologist may allow determination that some areas or units have low potentials for yielding significant fossils prior to the start of construction. Generally, these units will be poorly represented by specimens in institutional collections and will not require protection or salvage operations. However, as excavation for construction gets underway it is possible that significant and unanticipated paleontological resources might be encountered and require a change of classification from Low to High Potential and, thus, require monitoring and mitigation if the resources are found to be significant.
- III. **Undetermined Potential (sensitivity).** Specific areas underlain by sedimentary rock units for which little information is available are considered to have undetermined fossiliferous potentials. Field surveys by a qualified vertebrate paleontologist to specifically determine the potentials of the rock units are required before programs of impact mitigation for such areas may be developed.
- IV. **No Potential.** Rock units of metamorphic or igneous origin are commonly classified as having no potential for containing significant paleontological resources.

Existing Conditions

Regional Geologic Setting

The supplemental project area is located in the Perris Valley in the northern part of the geologically complex Peninsular Ranges geomorphic province (California Geological Survey 2002). A geomorphic province is a region of unique topography and geology that is distinguished from other regions based on its landforms and geologic history. The Peninsular Ranges are a northwest-southeast oriented complex of blocks that extend 125 miles from the Transverse Ranges and Los Angeles Basin to the tip of Baja California. The Peninsular Ranges are bounded to the east by the Colorado Desert and range in width from 30 to 100 miles (Norris and Webb 1990). The supplemental project area is situated within the Perris Block, a relatively stable rectangular structural unit of the Peninsular Ranges, positioned between



the Elsinore and San Jacinto fault zones (Morton and Miller 2006). The geology near the supplemental project area includes Mesozoic metasedimentary rocks intruded by Cenozoic igneous rocks, which are unconformably overlain by Pleistocene sedimentary deposits and Quaternary alluvium.

Geologic Units in the Supplemental Project Area

The supplemental project area includes one (1) geologic unit mapped at the surface (Figure 3, Attachment A): Quaternary very old (Pleistocene) alluvial fan deposits (Qvof) (Morton 2002; Morton and Cox 2002; Morton and Matti 2002). The Pleistocene alluvial fan deposits are composed of moderately- to well-consolidated, light to dark brown, gravel, coarse sand, and silt deposits, with moderate soil development. During the combined cultural and paleontological resource field reconnaissance survey conducted in support of the paleontological assessment for the original project (Clifford and DeBusk 2016), the Pleistocene alluvial fan deposits were confirmed to be present at approximately 2 meters (6.5 feet) below ground surface (bgs), below younger Quaternary alluvium and previous disturbed strata.

Pleistocene alluvial, fluvial, and lacustrine deposits have proven to yield scientifically significant paleontological resources throughout southern California from the coastal areas to the inland valleys (Springer et al. 2009). East of the supplemental project area near Lakeview, a diverse assemblage of fossil resources has been recovered including specimens of *Mammuthus* sp. (mammoth), *Smilodon* sp. (sabre-toothed cat), *Equus* sp. (extinct horse), *Bison antiquus* (bison), and numerous small mammals, reptiles, invertebrates, and plant remains. Southeast of the supplemental project area, the largest known open-environment non-asphaltic late Pleistocene fossil assemblage has been documented in Diamond and Domenigoni Valleys. Discovered during excavations of Diamond Valley Lake, this locality has yielded nearly 100,000 identifiable fossils representing over 105 vertebrate, invertebrate, and plant taxa (Clifford and DeBusk 2016; Springer et al. 2009).

Review of Locality Records

A record search of the vertebrate fossil collections at the Natural History Museum of Los Angeles County (LACM) was conducted by AE (Clifford and DeBusk 2016) for the original project area and immediate vicinity (i.e., localities recorded on the USGS Riverside East and Steele Peak, CA 7.5-minute topographic quadrangles). The paleontological record search included a one-mile buffer and therefore includes the supplemental project area.

The records search resulted in no previously recorded fossil localities within the original project area or vicinity. According to the LACM collection records, the closest vertebrate localities were identified approximately 10 miles east and south of the original project area from Pleistocene sedimentary deposits. The localities yielded fossils of extinct horse and camel, with depth of recovery not provided.

Results

Paleontological Resource Potential of the Supplemental Project Area

The Pleistocene alluvial fan deposits mapped at the surface of the supplemental project area have been assigned a high potential for buried paleontological resources in accordance with SVP (2010) guidelines because similar Pleistocene deposits have yielded significant vertebrate fossils in Riverside County. In addition, Riverside County's (2008) paleontological sensitivity map indicated that the supplemental project area is in an area with a High B resource potential, where fossils are likely to be encountered at or below 4 feet bgs. Based on the findings of the paleontological assessment for the original project



(Clifford and DeBusk 2016), the Pleistocene alluvial fan deposits were confirmed to be present at approximately 2 meters (6.5 feet) bgs; therefore, the geologic units in the supplemental project area have high paleontological sensitivity below this depth.

Impact Analysis

Ground disturbing activities in previously undisturbed portions of the supplemental project area underlain by geologic units with a high paleontological sensitivity (i.e. the early to middle Pleistocene alluvial fan deposits) may result in significant impacts to paleontological resources under Appendix G of State CEQA Guidelines. The results of this assessment are consistent with *Æ*'s findings that indicate high paleontological sensitivity for the geologic units mapped in the original project area.

Impacts would be significant if construction activities result in the destruction, damage, or loss of scientifically important paleontological resources and associated stratigraphic and paleontological data. The activities may include grading, excavation, drilling, or any other activity that disturbs the surface or subsurface geologic formations with a high paleontological sensitivity.

Recommendations

Based on the results of the supplemental assessment described in this memorandum, Rincon recommends implementation of the mitigation program developed for the original project by *Æ*. An additional survey of the supplemental project area is not recommended because: 1) a comprehensive survey was conducted in support of the original paleontological assessment; and 2) the ground surface of the supplemental project area is entirely obscured by paved roads, previously disturbed soil (overlying the sensitive Pleistocene alluvial fan deposits), and grass cover. Given the surface conditions of the supplemental project area, paleontological resources, if present, would very likely be buried and not visible during a field survey.

The mitigation measures recommended for the original project by *Æ* would apply to the supplemental project and would address the potentially significant impacts relating to the discovery of paleontological resources during project implementation through the recovery, identification, and curation of previously unrecovered fossils. These mitigation measures are summarized below:

- Retain a qualified paleontologist per SVP (2010)
- Development and implement a Paleontological Resource Mitigation Plan (PRMP)
- Develop and implement a Worker's Environmental Awareness Program
- Conduct full-time construction monitoring during ground disturbance that exceed 2 meters (6.5 feet) bgs within previously undisturbed geologic deposits with high paleontological sensitivity
- Provide a protocol in the PRMP for fossil discovery, preparation, and curation
- Prepare a final Paleontological Mitigation Report describing the results of the paleontological mitigation monitoring efforts

These measures would apply to all phases of supplemental project construction and would ensure that any fossils present on-site are preserved. Implementation of these measures would reduce potential impacts to paleontological resources to less than significant level under CEQA.



If you have any questions regarding this Paleontological Resources Assessment, please contact us.

Sincerely,

Rincon Consultants, Inc.

Heather Clifford, M.S.
Associate Paleontologist

Jessica DeBusk, B.S., M.B.A.
Principal Investigator/Program Manager

Jennifer Haddow, Ph.D.
Principal Environmental Scientist

Attachments

Attachment A Figures



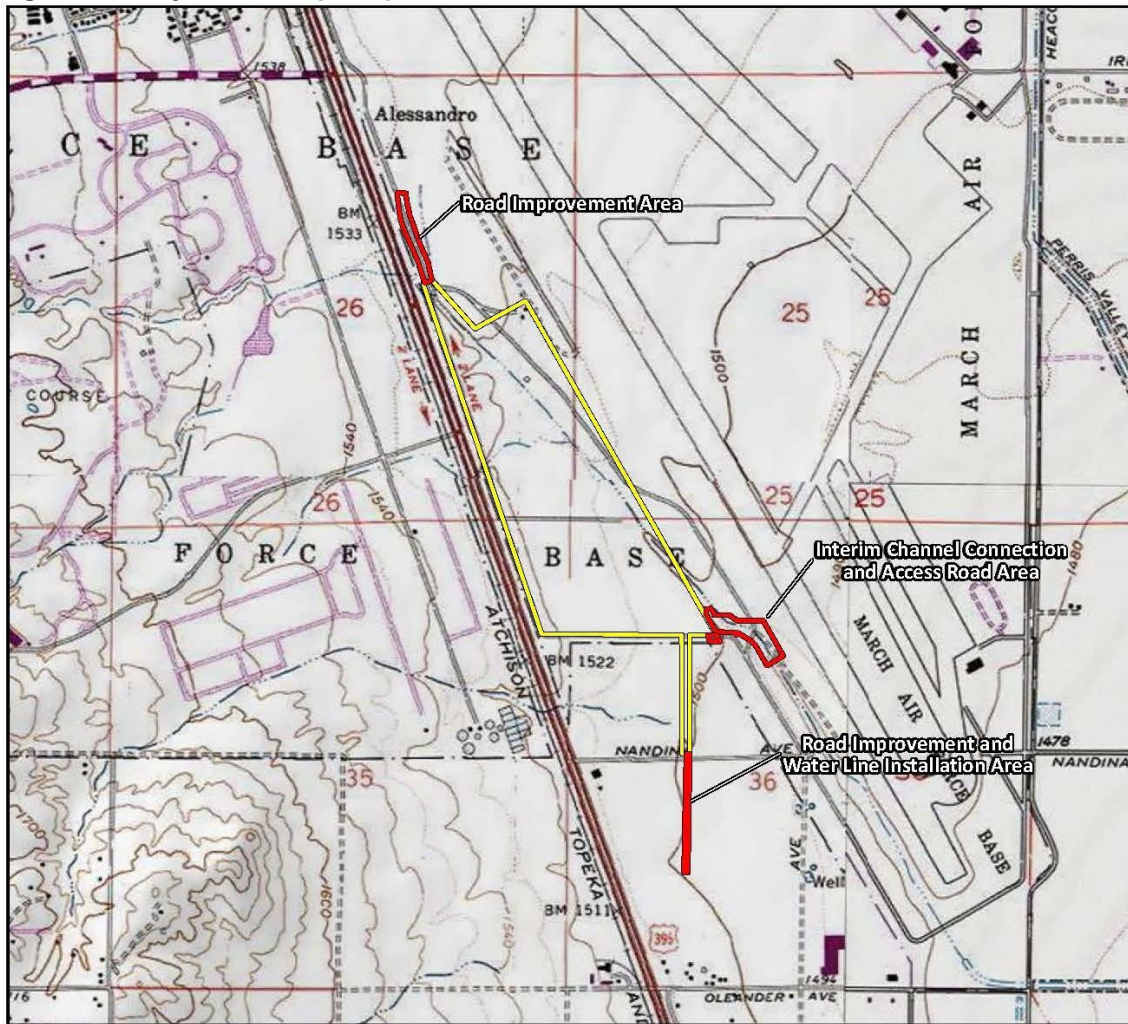
References

- California Geologic Survey. 2002. California Geomorphic Provinces. Note 36.
- Clifford, H.L. and DeBusk, J.L. 2016. Paleontological Resource Assessment of March Inland Airport Parcel D2 Project, Riverside County, California. Report prepared for Hillwood – A Perot Company, Ontario by Applied EarthWorks, Inc., Pasadena, California.
- Morton, D.M., Alvarez, R.M., and Diep, V.M. 2002. Geologic map of the Steele Peak 7.5' quadrangle, Riverside County, California. U.S. Geological Survey, Open-File Report OF-2001-449, scale 1:24,000.
- Morton, D.M., Bovard, K.R., and Alvarez, R.M. 2003. Preliminary geologic map of the Perris 7.5' quadrangle, Riverside County, California. U.S. Geological Survey, Open-File Report OF-2003-270, scale 1:24,000.
- Morton, D.M., Cox, B.F., Dawson, M., and O'Brien, T. 2002. Geologic map of the Riverside East 7.5' quadrangle, Riverside County, California. U.S. Geological Survey, Open-File Report OF-88-754, scale 1:24,000.
- Morton, D.M., Matti, J.C., Diep, V.M., and Edwards-Howells, Ursula. 2002. Geologic map of the Sunnymead 7.5' quadrangle, Riverside County, California. U.S. Geological Survey, Open-File Report OF-2001-450, scale 1:24,000.
- Morton, D.M., and Miller, F.K. 2006. Geologic map of the San Bernardino and Santa Ana 30' x 60' quadrangles, California: U.S. Geological Survey, Open-File Report OF-2006-1217, scale 1:100,000.
- Norris, R. M. and Webb, R. W. 1990. Geology of California. John Wiley and Sons, Inc. New York.
- Society of Vertebrate Paleontology. 2010. Standard Procedures for the Assessment and Mitigation of Adverse Impacts to Paleontological Resources. Society of Vertebrate Paleontology Impact Mitigation Guidelines Revision Committee.
- Springer, K., Scott, E., Sagebiel, J.C. and Murray, L.K. 2009. The Diamond Valley Lake local fauna: Late Pleistocene vertebrates from inland southern California. In Albright, L.B. III (ed.), Papers on Geology, Vertebrate Paleontology, and Biostratigraphy

Attachment A

Figures

Figure 1 Project Vicinity Map



Imagery provided by National Geographic Society, Esri and its licensors © 2019. Riverside East & Steele Peak Quadrangles. T03S R04W S25,26,35,36. The topographic representation depicted in this map may not portray all of the features currently found in the vicinity today and/or features depicted in this map may have changed since the original topographic map was assembled.

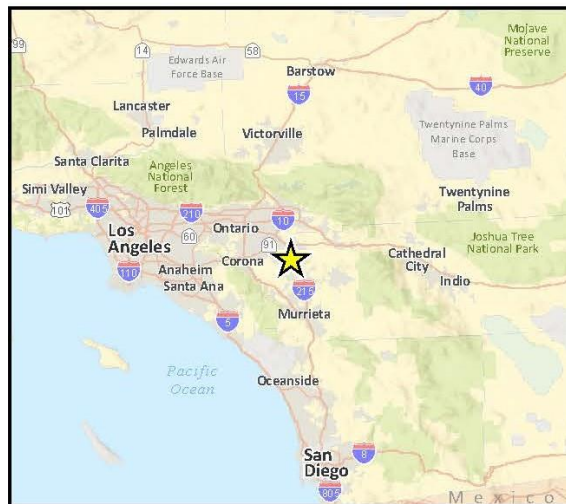
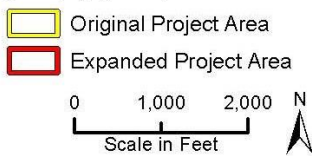
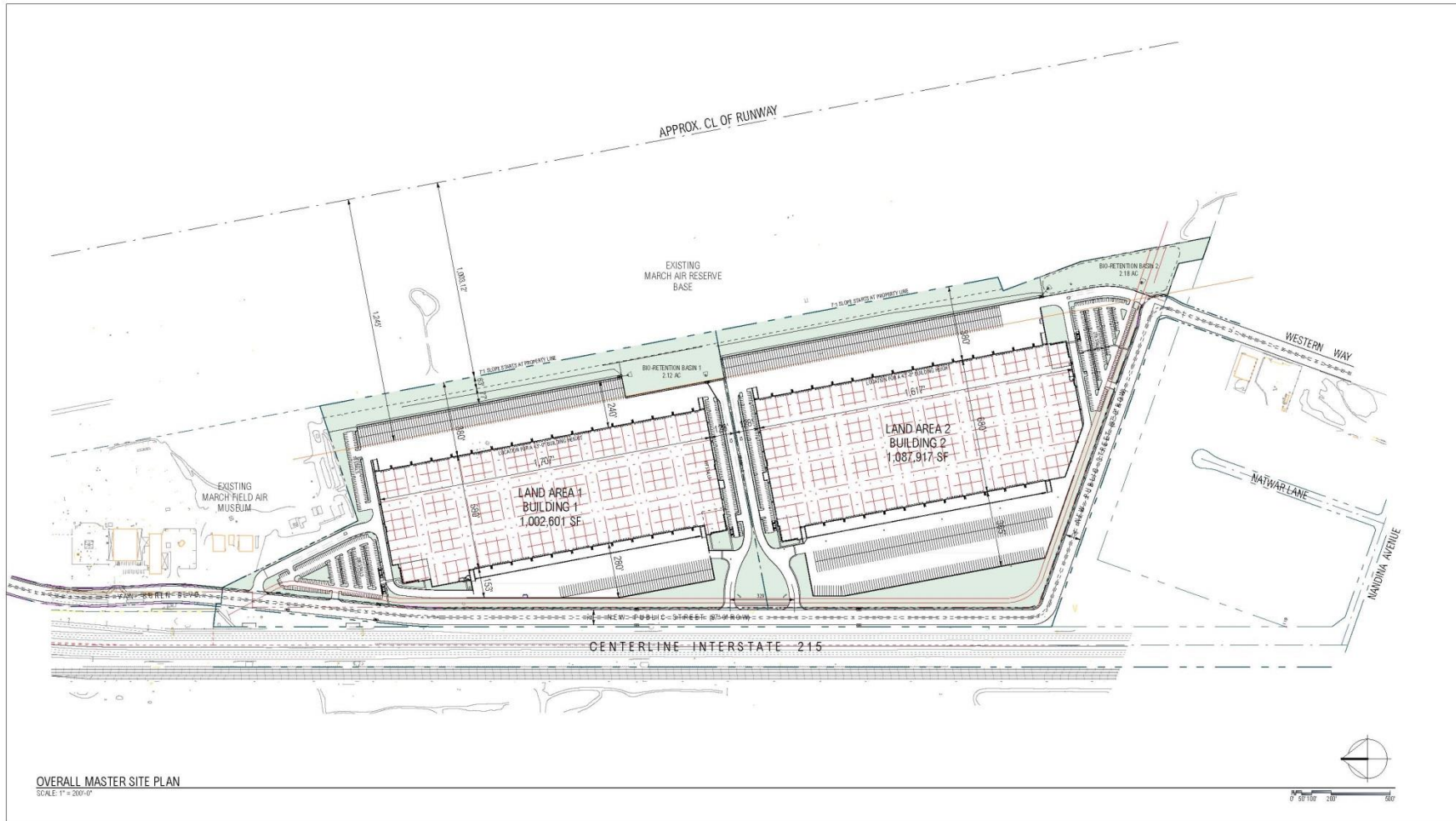


Figure 2 Map Showing Project Master Site Plan



Legend:

- Original Project Area (Yellow outline)
- Expanded Project Area (Red outline)
- Very old alluvial fan deposits (early Pleistocene) (Qvof)

Scale: 0, 1,000, 2,000 Feet

Geologic map of the Steele Peak 7.5' quadrangle, Riverside County, California.

Geologic imagery provided by Morton, D.M., Matti, J.C., Diep, V.M., and Edwards-Howells, Ursula, 2002; Geologic map of the Sunnyvale 7.5' quadrangle, Riverside County, California, Morton, D.M., Alvarez, R.M., and Diep, V.M., 2002; Geologic map of the Steele Peak 7.5' quadrangle, Riverside County, California, Morton, D.M., Cox, B.F., Dawson, Michael, and O'Brien, Timothy, 2002; Geologic map of the Riverside East 7.5' quadrangle, Riverside County, California, Morton, D.M., Royart, K.R., and Alvarez, R.M., 2003; Preliminary geologic map of the Perris 7.5' quadrangle, Riverside County, California.

Geologic imagery provided by Morton, D.M., Matti, J.C., Diep, V.M., and Edwards-Howells, Ursula, 2002, Geologic map of the Sunnymead 7.5' quadrangle, Riverside County, California. Morton, D.M., Alvarez, R.M., and Diep, V.M., 2002, Geologic map of the Steele Peak 7.5' quadrangle, Riverside County, California. Morton, D.M., Cox, B.F., Dawson, Michael, and O'Brien, Timothy, 2002, Geologic map of the Riverside East 7.5' quadrangle, Riverside County, California. Morton, D.M., Boyard, K.R., and Alvarez, R.M., 2003, Preliminary geologic map of the Perris 7.5' quadrangle, Riverside County, California.

E-5 Native American Consultation (Senate Bill 18 and Assembly Bill 52)

NATIVE AMERICAN HERITAGE COMMISSION

1550 Harbor Blvd., Suite 100
West Sacramento, CA 95691
(916) 373-3710
(916) 373-5471 FAX



October 13, 2016

Jeffrey Smith, Senior Planner
March Joint Powers Authority

Sent via e-mail: smith@marchjpa.com

RE: SB 18 / AB52 Consultation for the Proposed Veterans Industrial Park 215 (VIP 215) Project, City of Riverside; Riverside County, California

Dear Mr. Smith:

Attached is a consultation list of tribes with traditional lands or cultural places located within the boundaries of the above referenced project.

Government Code §65352.3 requires **local governments** to consult with California Native American tribes identified by the Native American Heritage Commission (NAHC) for the purpose of avoiding, protecting, and/or mitigating impacts to cultural places in creating or amending general plans, including specific plans.

In accordance with Public Resources Code Section 21080.3.1(d), formal notification must include a brief description of the proposed project and its location, the lead agency contact information, and a notification that the California Native American tribe has 30 days to request consultation. As of July 1, 2015, Public Resources Code Sections 21080.3.1 and 21080.3.2 require public agencies to consult with California Native American tribes identified by the NAHC for the purpose mitigating impacts to tribal cultural resources:

Within 14 days of determining that an application for a project is complete or a decision by a public agency to undertake a project, the lead agency shall provide formal notification to the designated contact of, or a tribal representative of, traditionally and culturally affiliated California Native American tribes that have requested notice, which shall be accomplished by means of at least one written notification that includes a brief description of the proposed project and its location, the lead agency contact information, and a notification that the California Native American tribe has 30 days to request consultation pursuant to this section. (Public Resources Code Section 21080.3.1(d))

The law **does not preclude** agencies from initiating consultation with the tribes that are culturally and traditionally affiliated with their jurisdictions. The NAHC believes that in fact that this is the best practice to ensure that tribes are consulted commensurate with the intent of the law.

The NAHC requests that lead agencies include in their notifications information regarding any cultural resources assessment that has been completed on a potential "area of project affect" (APE), such as:

1. The results of any record search that may have been conducted at an Information Center of the California Historical Resources Information System (CHRIS), including, but not limited to:
 - A listing of any and all known cultural resources have already been recorded on or adjacent to the APE;
 - Copies of any and all cultural resource records and study reports that may have been provided by the Information Center as part of the records search response;

- If the probability is low, moderate, or high that cultural resources are located in the APE.
- Whether the records search indicates a low, moderate or high probability that unrecorded cultural resources are located in the potential APE; and
- If a survey is recommended by the Information Center to determine whether previously unrecorded cultural resources are present.

2. The results of any archaeological inventory survey that was conducted, including:

- Any report that may contain site forms, site significance, and suggested mitigation measures.

All information regarding site locations, Native American human remains, and associated funerary objects should be in a separate confidential addendum, and not be made available for public disclosure in accordance with Government Code Section 6254.10.

3. The results of any Sacred Lands File (SFL) check conducted through Native American Heritage Commission. The request form can be found at <http://nahc.ca.gov/wp-content/uploads/2015/04/Sacred-Lands-File-NA-Contact-Form.pdf>.
4. Any ethnographic studies conducted for any area including all or part of the potential APE; and
5. Any geotechnical reports regarding all or part of the potential APE.

Lead agencies should be aware that records maintained by the NAHC and CHRIS is not exhaustive, and a negative response to these searches does not preclude the existence of a cultural place. A tribe may be the only source of information regarding the existence of a tribal cultural resource.

This information will aid tribes in determining whether to request formal consultation. In the case that they do, having the information beforehand will help to facilitate the consultation process. It will also provide documentation of your compliance with state statutes in preparing your environmental documents.

Lead agencies or agencies potentially undertaking a project are encouraged to send more than one written notice to tribes that are traditionally and culturally affiliated to a potential APE during the 30-day notification period to ensure that the information has been received.

If you receive notification of change of addresses and phone numbers from tribes, please notify me. With your assistance we are able to assure that our consultation list contains current information.

If you have any questions, please contact me at my email address: gayle.totton@nahc.ca.gov.

Sincerely,



Gayle Totton, M.A., PhD.
Associate Governmental Program Analyst

**Native American Heritage Commission
Tribal Consultation List
Riverside County
10/13/2016**

**Gabrieleno Band of Mission
Indians - Kizh Nation**

Andrew Salas, Chairperson
P.O. Box 393
Covina, CA, 91723
Phone: (626) 926 - 4131
gabrielenoindians@yahoo.com

Duplicate

Ewiiaapaayp Tribal Office

Robert Pinto, Chairperson
4054 Willows Road
Alpine, CA, 91901
Phone: (619)445-6315
Fax: (619)445-9126
Kumeyaay

**Agua Caliente Band of Cahuilla
Indians**

Jeff Grubbe, Chairperson
5401 Dinah Shore Drive
Palm Springs, CA, 92264
Phone: (760) 699 - 6800
Fax: (760) 699-6919
Cahuilla
Luiseno

Ewiiaapaayp Tribal Office

Michael Garcia, Vice Chairperson
4054 Willows Road
Alpine, CA, 91901
Phone: (619) 445 - 6315
Fax: (619) 445-9126
michaelg@leaningrock.net
Kumeyaay

**Augustine Band of Cahuilla
Mission Indians**

Amanda Vance, Chairperson
P.O. Box 846
Coachella, CA, 92236
Phone: (760)398-4722
Fax: (760)369-7161
Cahuilla

**Gabrieleno Band of Mission
Indians - Kizh Nation**

Andrew Salas, Chairperson
P.O. Box 393
Covina, CA, 91723
Phone: (626) 926 - 4131
gabrielenoindians@yahoo.com
Gabrielino

**Cabazon Band of Mission
Indians**

Doug Welmas, Chairperson
84-245 Indio Springs Parkway
Indio, CA, 92203
Phone: (760)342-2593
Fax: (760)347-7880
Cahuilla

**Gabrieleno/Tongva San Gabriel
Band of Mission Indians**

Anthony Morales, Chairperson
P.O. Box 693
San Gabriel, CA, 91778
Phone: (626) 483 - 3564
Fax: (626)286-1262
GTtribalcouncil@aol.com
Gabrielino

Cahuilla Band of Indians

Luther Salgado, Chairperson
52701 U.S. Highway 371
Anza, CA, 92539
Phone: (951) 763 - 5549
Fax: (951) 763-2808
Chairman@cahuilla.net
Cahuilla

Gabrielino /Tongva Nation

Sandonne Goad, Chairperson
106 1/2 Judge John Aiso St.,
#231
Los Angeles, CA, 90012
Phone: (951)807-0479
sgoad@gabrielino-tongva.com
Gabrielino

Campo Band of Mission Indians

Ralph Goff, Chairperson
36190 Church Road, Suite 1
Campo, CA, 91906
Phone: (619)478-9046
Fax: (619)478-5818
rgoff@campo-nsn.gov
Kumeyaay

**Gabrielino Tongva Indians of
California Tribal Council**

Robert F. Dorame, Chairperson
P.O. Box 490
Bellflower, CA, 90707
Phone: (562)761-6417
Fax: (562)761-6417
gtongva@verizon.net
Gabrielino

This list is current only as of the date of this document and is based on the information available to the Commission on the date it was produced. Distribution of this list does not relieve any person of statutory responsibility as defined in Section 7050.5 of the Health and Safety Code, Section 5097.94 of the Public Resources Code and Section 5097.98 of the Public Resources Code.

This list is applicable only for consultation with Native American tribes under Government Code Sections 65352.3, 65362.4 et seq. and Public Resources Code Sections 21080.3.1 for the proposed Veterans Industrial Park 215 (VIP 215), Riverside County.

**Native American Heritage Commission
Tribal Consultation List
Riverside County
10/13/2016**

Gabrielino-Tongva Tribe

Linda Candelaria, Co-Chairperson
1999 Avenue of the Stars, Suite 1100
Los Angeles, CA, 90067
Phone: (626) 676 - 1184

Gabrielino

Jamul Indian Village

Erica Pinto, Chairperson
P.O. Box 612
Jamul, CA, 91935
Phone: (619)669-4785
Fax: (619)669-4817

Kumeyaay

***La Jolla Band of Luiseno
Indians***

Thomas Rodriguez, Chairperson
22000 Highway 76
Pauma Valley, CA, 92061
Phone: (760)742-3771

Luiseno

***La Posta Band of Mission
Indians***

Javaughn Miller, Tribal
Administrator
8 Crestwood Road
Boulevard, CA, 91905
Phone: (619) 478 - 2113
Fax: (619) 478-2125
jmiller@LPtribe.net

Kumeyaay

***La Posta Band of Mission
Indians***

Gwendolyn Parada, Chairperson
8 Crestwood Road
Boulevard, CA, 91905
Phone: (619)478-2113
Fax: (619)478-2125
LP13boots@aol.com

Kumeyaay

***Los Coyotes Band of Mission
Indians***

Shane Chapparosa, Chairperson
P.O. Box 189
Warner Springs, CA, 92086-0189
Phone: (760)782-0711
Fax: (760)782-0712
Chapparosa@msn.com

Cahuilla

***Manzanita Band of Kumeyaay
Nation***

Angela Elliott Santos, Chairperson
P.O. Box 1302
Boulevard, CA, 91905
Phone: (619) 766 - 4930
Fax: (619) 766-4957

Kumeyaay

***Mesa Grande Band of Mission
Indians***

Virgil Oyos, Chairperson
P.O. Box 270
Santa Ysabel, CA, 92070
Phone: (760)782-3818
Fax: (760)782-9092
mesagrandeband@msn.com

Kumeyaay

***Morongo Band of Mission
Indians***

Robert Martin, Chairperson
12700 Pumarra Road
Banning, CA, 92220
Phone: (951)849-8807
Fax: (951)922-8146

Cahuilla
Serrano

Pala Band of Mission Indians

Robert Smith, Chairperson
12196 Pala Mission Road
Pala, CA, 92059
Phone: (760) 891 - 3500
Fax: (760) 742-3189
rsmith@palatribe.com

Cupeno
Luiseno

***Pauma Band of Luiseno Indians
- Pauma & Yuima Reservation***

Temet Aguilar, Chairperson
P.O. Box 369, Ext. 303
Pauma Valley, CA, 92061
Phone: (760)742-1289
Fax: (760)742-3422

Luiseno

This list is current only as of the date of this document and is based on the information available to the Commission on the date it was produced. Distribution of this list does not relieve any person of statutory responsibility as defined in Section 7050.5 of the Health and Safety Code, Section 5097.94 of the Public Resources Code and Section 5097.98 of the Public Resources Code.

This list is applicable only for consultation with Native American tribes under Government Code Sections 65352.3, 65362.4 et seq. and Public Resources Code Sections 21080.3.1 for the proposed Veterans Industrial Park 215 (VIP 215), Riverside County.

**Native American Heritage Commission
Tribal Consultation List
Riverside County
10/13/2016**

***Pechanga Band of Mission
Indians***

Mark Macarro, Chairperson
P.O. Box 1477 Luiseno
Temecula, CA, 92593
Phone: (951) 770 - 6000
Fax: (951) 695-1778
striplett@pechanga-nsn.gov

***Ramona Band of Cahuilla
Mission Indians***

Joseph Hamilton, Chairperson
P.O. Box 391670 Cahuilla
Anza, CA, 92539
Phone: (951)763-4105
Fax: (951)763-4325
admin@ramonatribes.com

Rincon Band of Mission Indians

Jim McPherson, Tribal Historic
Preservation Officer
1 West Tribal Road Luiseno
Valley Center, CA, 92082
Phone: (760)749-1051
Fax: (760)749-5144
vwhipple@rincontribe.org

Rincon Band of Mission Indians

Bo Mazzetti, Chairperson
1 West Tribal Road Luiseno
Valley Center, CA, 92082
Phone: (760)749-1051
Fax: (760)749-5144
bomazzetti@aol.com

***San Fernando Band of Mission
Indians***

John Valenzuela, Chairperson
P.O. Box 221838 Kitanemuk
Newhall, CA, 91322 Serrano
Phone: (760) 885 - 0955 Tataviam
tsen2u@hotmail.com

***San Manuel Band of Mission
Indians***

Lee Clauss, Director of Cultural
Resources
26569 Community Center Drive Serrano
Highland, CA, 92346
Phone: (909) 864 - 8933
Fax: (909) 864-3370
lclauss@sanmanuel-nsn.gov

***San Pasqual Band of Mission
Indians***

Allen E. Lawson, Chairperson
P.O. Box 365 Kumeyaay
Valley Center, CA, 92082
Phone: (760)749-3200
Fax: (760)749-3876
allenl@sanpasqualtribe.org

***Santa Rosa Band of Mission
Indians***

Steven Estrada, Chairperson
P.O. Box 391820 Cahuilla
Anza, CA, 92539
Phone: (951)659-2700
Fax: (951)659-2228

***Serrano Nation of Mission
Indians***

Goldie Walker, Chairperson
P.O. Box 343 Serrano
Patton, CA, 92369
Phone: (909)528-9027

***Soboba Band of Luiseno
Indians***

Rosemary Morillo, Chairperson
P. O. Box 487 Cahuilla
San Jacinto, CA, 92583 Luiseno
Phone: (951) 654 - 2765
Fax: (951) 654-4198
rmorillo@soboba-nsn.gov

This list is current only as of the date of this document and is based on the information available to the Commission on the date it was produced. Distribution of this list does not relieve any person of statutory responsibility as defined in Section 7050.5 of the Health and Safety Code, Section 5097.94 of the Public Resources Code and Section 5097.98 of the Public Resources Code.

This list is applicable only for consultation with Native American tribes under Government Code Sections 65352.3, 65362.4 et seq. and Public Resources Code Sections 21080.3.1 for the proposed Veterans Industrial Park 215 (VIP 215), Riverside County.

**Native American Heritage Commission
Tribal Consultation List
Riverside County
10/13/2016**

***Sycuan Band of the Kumeyaay
Nation***

Cody J. Martinez, Chairperson
1 Kwaaypaay Court
El Cajon, CA, 92019
Phone: (619)445-2613
Fax: (619)445-1927
ssilva@sycuan-nsn.gov

Kumeyaay

***Torres-Martinez Desert Cahuilla
Indians***

Mary Resvaloso, Chairperson
P.O. Box 1160
Thermal, CA, 92274
Phone: (760) 397 - 0300
Fax: (760) 397-8146
tmchair@torresmartinez.org

Cahuilla

***Viejas Band of Kumeyaay
Indians***

Robert J. Welch, Chairperson
1 Viejas Grade Road
Alpine, CA, 91901
Phone: (619)445-3810
Fax: (619)445-5337
jhagen@viejas-nsn.gov

Kumeyaay

This list is current only as of the date of this document and is based on the information available to the Commission on the date it was produced. Distribution of this list does not relieve any person of statutory responsibility as defined in Section 7050.5 of the Health and Safety Code, Section 5097.94 of the Public Resources Code and Section 5097.98 of the Public Resources Code.

This list is applicable only for consultation with Native American tribes under Government Code Sections 65352.3, 65362.4 et seq. and Public Resources Code Sections 21080.3.1 for the proposed Veterans Industrial Park 215 (VIP 215), Riverside County.

MARCH JOINT POWERS AUTHORITY

October 17, 2016

Jeff Grubbe
Chairperson
Agua Caliente Band of Cahuilla Indians
5401 Dinah Shore Drive
Palm Springs, CA 92264

VIA CERTIFIED MAIL

Re: **SB 18 Tribal Consultation - Veterans Industrial Park 215**

Dear Mr. Grubbe:

The Veterans Industrial Park 215 (VIP 215) project is being referred to the **Agua Caliente Band of Cahuilla Indians** to provide written notification in compliance with Senate Bill 18 (Tribal Consultation). As such, and pursuant to Section 65352.3 (a)(2) of the Government Code, if you wish to initiate consultation, please submit your written request for consultation with March Joint Powers Authority (JPA) regarding this project and its potential impacts to tribal cultural resources within 90 days from receipt of this letter. Within 30 days of receiving your request, the JPA will begin the consultation process.

The VIP 215 project site is located directly southeast of the Interstate 215 Freeway off-ramp at Van Buren Boulevard, south of the existing March Field Air Museum, and west of an existing March Air Reserve Base airport runway, in Riverside County. A map of the project location map and conceptual site plan are attached for reference. The proposed project is seeking a Plot Plan, **General Plan Amendment, Specific Plan, Parcel Map** and Development Agreement in support of the development of industrial buildings that would allow for a mix of (non-aviation) logistics center uses that could support wholesale, storage, distribution, manufacturing and/or assembly center uses. A total of 2,219,852 square feet of building space is proposed in two buildings with parking, landscaping, drainage facilities and off-site improvements. The proposed project site encompasses 142.5 acres.

We understand the information you provide may be sensitive, protected or confidential. Any information provided, or any exchange of information regarding tribal cultural resources as a result of consultation with the JPA, will be recorded and managed in accordance with state law (CA Code Regs. 15120(d), Public Resources Code 5097.9, 5097.993, 21082.3).

If you wish to initiate consultation, please respond in writing within 90 days from receipt of this letter to me via email at jemasm@msn.com or via letter to March Joint Powers Authority, 14205 Meridian Parkway, Suite 140, Riverside, CA 92518. If you have any questions, please contact me at (951) 656-7000. Thank you.

Sincerely,



JEFFREY M. SMITH, AICP
Senior Planner

Attachments: Project Location Map
Conceptual Site Plan

MARCH JOINT POWERS AUTHORITY



October 17, 2016

Amanda Vance

Chairperson

Augustine Band of Cahuilla Mission Indians

P.O. Box 846

Coachella, CA 92236

VIA CERTIFIED MAIL

Re: SB 18 Tribal Consultation - Veterans Industrial Park 215

Dear Ms. Vance:

The Veterans Industrial Park 215 (VIP 215) project is being referred to the **Augustine Band of Cahuilla Mission Indians** to provide written notification in compliance with Senate Bill 18 (Tribal Consultation). As such, and pursuant to Section 65352.3 (a)(2) of the Government Code, if you wish to initiate consultation, please submit your written request for consultation with March Joint Powers Authority (JPA) regarding this project and its potential impacts to tribal cultural resources within 90 days from receipt of this letter. Within 30 days of receiving your request, the JPA will begin the consultation process.

The VIP 215 project site is located directly southeast of the Interstate 215 Freeway off-ramp at Van Buren Boulevard, south of the existing March Field Air Museum, and west of an existing March Air Reserve Base airport runway, in Riverside County. A map of the project location map and conceptual site plan are attached for reference. The proposed project is seeking a Plot Plan, **General Plan Amendment, Specific Plan**, Parcel Map and Development Agreement in support of the development of industrial buildings that would allow for a mix of (non-aviation) logistics center uses that could support wholesale, storage, distribution, manufacturing and/or assembly center uses. A total of 2,219,852 square feet of building space is proposed in two buildings with parking, landscaping, drainage facilities and off-site improvements. The proposed project site encompasses 142.5 acres.

We understand the information you provide may be sensitive, protected or confidential. Any information provided, or any exchange of information regarding tribal cultural resources as a result of consultation with the JPA, will be recorded and managed in accordance with state law (CA Code Regs. 15120(d), Public Resources Code 5097.9, 5097.993, 21082.3).

If you wish to initiate consultation, please respond in writing within 90 days from receipt of this letter to me via email at jemasm@msn.com or via letter to March Joint Powers Authority, 14205 Meridian Parkway, Suite 140, Riverside, CA 92518. If you have any questions, please contact me at (951) 656-7000. Thank you.

Sincerely,

A handwritten signature in blue ink, reading "Jeffrey M. Smith", is positioned above the printed name.

JEFFREY M. SMITH, AICP

Senior Planner

Attachments: Project Location Map
Conceptual Site Plan

MARCH JOINT POWERS AUTHORITY

October 17, 2016

Doug Welmas

Chairperson

Cabazon Band of Mission Indians

84-245 Indio Springs Parkway

Indio, CA 92203

VIA CERTIFIED MAIL

Re: SB 18 Tribal Consultation - Veterans Industrial Park 215

Dear Mr. Welmas:

The Veterans Industrial Park 215 (VIP 215) project is being referred to the **Cabazon Band of Mission Indians** to provide written notification in compliance with Senate Bill 18 (Tribal Consultation). As such, and pursuant to Section 65352.3 (a)(2) of the Government Code, if you wish to initiate consultation, please submit your written request for consultation with March Joint Powers Authority (JPA) regarding this project and its potential impacts to tribal cultural resources within 90 days from receipt of this letter. Within 30 days of receiving your request, the JPA will begin the consultation process.

The VIP 215 project site is located directly southeast of the Interstate 215 Freeway off-ramp at Van Buren Boulevard, south of the existing March Field Air Museum, and west of an existing March Air Reserve Base airport runway, in Riverside County. A map of the project location map and conceptual site plan are attached for reference. The proposed project is seeking a Plot Plan, **General Plan Amendment, Specific Plan**, Parcel Map and Development Agreement in support of the development of industrial buildings that would allow for a mix of (non-aviation) logistics center uses that could support wholesale, storage, distribution, manufacturing and/or assembly center uses. A total of 2,219,852 square feet of building space is proposed in two buildings with parking, landscaping, drainage facilities and off-site improvements. The proposed project site encompasses 142.5 acres.

We understand the information you provide may be sensitive, protected or confidential. Any information provided, or any exchange of information regarding tribal cultural resources as a result of consultation with the JPA, will be recorded and managed in accordance with state law (CA Code Regs. 15120(d), Public Resources Code 5097.9, 5097.993, 21082.3).

If you wish to initiate consultation, please respond in writing within 90 days from receipt of this letter to me via email at jemasm@msn.com or via letter to March Joint Powers Authority, 14205 Meridian Parkway, Suite 140, Riverside, CA 92518. If you have any questions, please contact me at (951) 656-7000. Thank you.

Sincerely,



JEFFREY M. SMITH, AICP

Senior Planner

Attachments: Project Location Map
Conceptual Site Plan

MARCH JOINT POWERS AUTHORITY



October 17, 2016

Luther Salgado
Chairperson
Cahuilla Band of Indians
P.O. Box 391760
Anza, CA 92539

VIA CERTIFIED MAIL

Re: SB 18 Tribal Consultation - Veterans Industrial Park 215

Dear Mr. Salgado:

The Veterans Industrial Park 215 (VIP 215) project is being referred to the **Cahuilla Band of Indians** to provide written notification in compliance with Senate Bill 18 (Tribal Consultation). As such, and pursuant to Section 65352.3 (a)(2) of the Government Code, if you wish to initiate consultation, please submit your written request for consultation with March Joint Powers Authority (JPA) regarding this project and its potential impacts to tribal cultural resources within 90 days from receipt of this letter. Within 30 days of receiving your request, the JPA will begin the consultation process.

The VIP 215 project site is located directly southeast of the Interstate 215 Freeway off-ramp at Van Buren Boulevard, south of the existing March Field Air Museum, and west of an existing March Air Reserve Base airport runway, in Riverside County. A map of the project location map and conceptual site plan are attached for reference. The proposed project is seeking a Plot Plan, **General Plan Amendment, Specific Plan, Parcel Map and Development Agreement** in support of the development of industrial buildings that would allow for a mix of (non-aviation) logistics center uses that could support wholesale, storage, distribution, manufacturing and/or assembly center uses. A total of 2,219,852 square feet of building space is proposed in two buildings with parking, landscaping, drainage facilities and off-site improvements. The proposed project site encompasses 142.5 acres.

We understand the information you provide may be sensitive, protected or confidential. Any information provided, or any exchange of information regarding tribal cultural resources as a result of consultation with the JPA, will be recorded and managed in accordance with state law (CA Code Regs. 15120(d), Public Resources Code 5097.9, 5097.993, 21082.3).

If you wish to initiate consultation, please respond in writing within 90 days from receipt of this letter to me via email at jemasm@msn.com or via letter to March Joint Powers Authority, 14205 Meridian Parkway, Suite 140, Riverside, CA 92518. If you have any questions, please contact me at (951) 656-7000. Thank you.

Sincerely,

A handwritten signature in blue ink, reading "Jeffrey M. Smith", is positioned above the typed name.

JEFFREY M. SMITH, AICP
Senior Planner

Attachments: Project Location Map
Conceptual Site Plan

MARCH JOINT POWERS AUTHORITY



October 17, 2016

Ralph Goff
Chairperson
Campo Band of Mission Indians
36190 Church Road, Suite 1
Campo, CA 91906

VIA CERTIFIED MAIL

Re: SB 18 Tribal Consultation - Veterans Industrial Park 215

Dear Mr. Goff:

The Veterans Industrial Park 215 (VIP 215) project is being referred to the **Campo Band of Mission Indians** to provide written notification in compliance with Senate Bill 18 (Tribal Consultation). As such, and pursuant to Section 65352.3 (a)(2) of the Government Code, if you wish to initiate consultation, please submit your written request for consultation with March Joint Powers Authority (JPA) regarding this project and its potential impacts to tribal cultural resources within 90 days from receipt of this letter. Within 30 days of receiving your request, the JPA will begin the consultation process.

The VIP 215 project site is located directly southeast of the Interstate 215 Freeway off-ramp at Van Buren Boulevard, south of the existing March Field Air Museum, and west of an existing March Air Reserve Base airport runway, in Riverside County. A map of the project location map and conceptual site plan are attached for reference. The proposed project is seeking a Plot Plan, **General Plan Amendment, Specific Plan, Parcel Map and Development Agreement** in support of the development of industrial buildings that would allow for a mix of (non-aviation) logistics center uses that could support wholesale, storage, distribution, manufacturing and/or assembly center uses. A total of 2,219,852 square feet of building space is proposed in two buildings with parking, landscaping, drainage facilities and off-site improvements. The proposed project site encompasses 142.5 acres.

We understand the information you provide may be sensitive, protected or confidential. Any information provided, or any exchange of information regarding tribal cultural resources as a result of consultation with the JPA, will be recorded and managed in accordance with state law (CA Code Regs. 15120(d), Public Resources Code 5097.9, 5097.993, 21082.3).

If you wish to initiate consultation, please respond in writing within 90 days from receipt of this letter to me via email at jemasm@msn.com or via letter to March Joint Powers Authority, 14205 Meridian Parkway, Suite 140, Riverside, CA 92518. If you have any questions, please contact me at (951) 656-7000. Thank you.

Sincerely,

JEFFREY M. SMITH, AICP
Senior Planner

Attachments: Project Location Map
Conceptual Site Plan

MARCH JOINT POWERS AUTHORITY



October 17, 2016

Robert Pinto
Chairperson
Ewiiapaayp Tribal Office
4054 Willows Road
Alpine, CA 91901

VIA CERTIFIED MAIL

Re: SB 18 Tribal Consultation - Veterans Industrial Park 215

Dear Mr. Pinto:

The Veterans Industrial Park 215 (VIP 215) project is being referred to the **Ewiiapaayp Tribal Office** to provide written notification in compliance with Senate Bill 18 (Tribal Consultation). As such, and pursuant to Section 65352.3 (a)(2) of the Government Code, if you wish to initiate consultation, please submit your written request for consultation with March Joint Powers Authority (JPA) regarding this project and its potential impacts to tribal cultural resources within 90 days from receipt of this letter. Within 30 days of receiving your request, the JPA will begin the consultation process.

The VIP 215 project site is located directly southeast of the Interstate 215 Freeway off-ramp at Van Buren Boulevard, south of the existing March Field Air Museum, and west of an existing March Air Reserve Base airport runway, in Riverside County. A map of the project location map and conceptual site plan are attached for reference. The proposed project is seeking a Plot Plan, **General Plan Amendment, Specific Plan, Parcel Map and Development Agreement** in support of the development of industrial buildings that would allow for a mix of (non-aviation) logistics center uses that could support wholesale, storage, distribution, manufacturing and/or assembly center uses. A total of 2,219,852 square feet of building space is proposed in two buildings with parking, landscaping, drainage facilities and off-site improvements. The proposed project site encompasses 142.5 acres.

We understand the information you provide may be sensitive, protected or confidential. Any information provided, or any exchange of information regarding tribal cultural resources as a result of consultation with the JPA, will be recorded and managed in accordance with state law (CA Code Regs. 15120(d), Public Resources Code 5097.9, 5097.993, 21082.3).

If you wish to initiate consultation, please respond in writing within 90 days from receipt of this letter to me via email at jemas@msn.com or via letter to March Joint Powers Authority, 14205 Meridian Parkway, Suite 140, Riverside, CA 92518. If you have any questions, please contact me at (951) 656-7000. Thank you.

Sincerely,

JEFFREY M. SMITH, AICP
Senior Planner

Attachments: Project Location Map
Conceptual Site Plan

MARCH JOINT POWERS AUTHORITY



October 17, 2016

Michael Garcia
Vice Chairperson
Ewiiapaayp Tribal Office
4054 Willows Road
Alpine, CA 91901

VIA CERTIFIED MAIL

Re: SB 18 Tribal Consultation - Veterans Industrial Park 215

Dear Mr. Garcia:

The Veterans Industrial Park 215 (VIP 215) project is being referred to the **Ewiiapaayp Tribal Office** to provide written notification in compliance with Senate Bill 18 (Tribal Consultation). As such, and pursuant to Section 65352.3 (a)(2) of the Government Code, if you wish to initiate consultation, please submit your written request for consultation with March Joint Powers Authority (JPA) regarding this project and its potential impacts to tribal cultural resources within 90 days from receipt of this letter. Within 30 days of receiving your request, the JPA will begin the consultation process.

The VIP 215 project site is located directly southeast of the Interstate 215 Freeway off-ramp at Van Buren Boulevard, south of the existing March Field Air Museum, and west of an existing March Air Reserve Base airport runway, in Riverside County. A map of the project location map and conceptual site plan are attached for reference. The proposed project is seeking a Plot Plan, **General Plan Amendment, Specific Plan, Parcel Map and Development Agreement** in support of the development of industrial buildings that would allow for a mix of (non-aviation) logistics center uses that could support wholesale, storage, distribution, manufacturing and/or assembly center uses. A total of 2,219,852 square feet of building space is proposed in two buildings with parking, landscaping, drainage facilities and off-site improvements. The proposed project site encompasses 142.5 acres.

We understand the information you provide may be sensitive, protected or confidential. Any information provided, or any exchange of information regarding tribal cultural resources as a result of consultation with the JPA, will be recorded and managed in accordance with state law (CA Code Regs. 15120(d), Public Resources Code 5097.9, 5097.993, 21082.3).

If you wish to initiate consultation, please respond in writing within 90 days from receipt of this letter to me via email at jemasm@msn.com or via letter to March Joint Powers Authority, 14205 Meridian Parkway, Suite 140, Riverside, CA 92518. If you have any questions, please contact me at (951) 656-7000. Thank you.

Sincerely,

A handwritten signature in blue ink, reading "Jeffrey M. Smith", is written over a light blue circular stamp.

JEFFREY M. SMITH, AICP
Senior Planner

Attachments: Project Location Map
Conceptual Site Plan

MARCH JOINT POWERS AUTHORITY



October 17, 2016

Robert F. Dorame

Chairperson

Gabrielino Tongva Indians of California Tribal Council

P.O. Box 490

Bellflower, CA 90707

VIA CERTIFIED MAIL

Re: SB 18 Tribal Consultation - Veterans Industrial Park 215

Dear Mr. Dorame:

The Veterans Industrial Park 215 (VIP 215) project is being referred to the **Gabrielino Tongva Indians of California Tribal Council** to provide written notification in compliance with Senate Bill 18 (Tribal Consultation). As such, and pursuant to Section 65352.3 (a)(2) of the Government Code, if you wish to initiate consultation, please submit your written request for consultation with March Joint Powers Authority (JPA) regarding this project and its potential impacts to tribal cultural resources within 90 days from receipt of this letter. Within 30 days of receiving your request, the JPA will begin the consultation process.

The VIP 215 project site is located directly southeast of the Interstate 215 Freeway off-ramp at Van Buren Boulevard, south of the existing March Field Air Museum, and west of an existing March Air Reserve Base airport runway, in Riverside County. A map of the project location map and conceptual site plan are attached for reference. The proposed project is seeking a Plot Plan, **General Plan Amendment, Specific Plan, Parcel Map and Development Agreement** in support of the development of industrial buildings that would allow for a mix of (non-aviation) logistics center uses that could support wholesale, storage, distribution, manufacturing and/or assembly center uses. A total of 2,219,852 square feet of building space is proposed in two buildings with parking, landscaping, drainage facilities and off-site improvements. The proposed project site encompasses 142.5 acres.

We understand the information you provide may be sensitive, protected or confidential. Any information provided, or any exchange of information regarding tribal cultural resources as a result of consultation with the JPA, will be recorded and managed in accordance with state law (CA Code Regs. 15120(d), Public Resources Code 5097.9, 5097.993, 21082.3).

If you wish to initiate consultation, please respond in writing within 90 days from receipt of this letter to me via email at jemasm@msn.com or via letter to March Joint Powers Authority, 14205 Meridian Parkway, Suite 140, Riverside, CA 92518. If you have any questions, please contact me at (951) 656-7000. Thank you.

Sincerely,

JEFFREY M. SMITH, AICP

Senior Planner

Attachments: Project Location Map
Conceptual Site Plan

MARCH JOINT POWERS AUTHORITY



October 17, 2016

Linda Candelaria
Co-Chairperson
Gabrielino-Tongva Tribe
1999 Avenue of the Stars, Suite 1100
Los Angeles, CA 90067

VIA CERTIFIED MAIL

Re: SB 18 Tribal Consultation - Veterans Industrial Park 215

Dear Ms. Candelaria:

The Veterans Industrial Park 215 (VIP 215) project is being referred to the **Gabrielino-Tongva Tribe** to provide written notification in compliance with Senate Bill 18 (Tribal Consultation). As such, and pursuant to Section 65352.3 (a)(2) of the Government Code, if you wish to initiate consultation, please submit your written request for consultation with March Joint Powers Authority (JPA) regarding this project and its potential impacts to tribal cultural resources within 90 days from receipt of this letter. Within 30 days of receiving your request, the JPA will begin the consultation process.

The VIP 215 project site is located directly southeast of the Interstate 215 Freeway off-ramp at Van Buren Boulevard, south of the existing March Field Air Museum, and west of an existing March Air Reserve Base airport runway, in Riverside County. A map of the project location map and conceptual site plan are attached for reference. The proposed project is seeking a Plot Plan, **General Plan Amendment, Specific Plan, Parcel Map and Development Agreement** in support of the development of industrial buildings that would allow for a mix of (non-aviation) logistics center uses that could support wholesale, storage, distribution, manufacturing and/or assembly center uses. A total of 2,219,852 square feet of building space is proposed in two buildings with parking, landscaping, drainage facilities and off-site improvements. The proposed project site encompasses 142.5 acres.

We understand the information you provide may be sensitive, protected or confidential. Any information provided, or any exchange of information regarding tribal cultural resources as a result of consultation with the JPA, will be recorded and managed in accordance with state law (CA Code Regs. 15120(d), Public Resources Code 5097.9, 5097.993, 21082.3).

If you wish to initiate consultation, please respond in writing within 90 days from receipt of this letter to me via email at jemasm@msn.com or via letter to March Joint Powers Authority, 14205 Meridian Parkway, Suite 140, Riverside, CA 92518. If you have any questions, please contact me at (951) 656-7000. Thank you.

Sincerely,

A handwritten signature in blue ink, reading "Jeffrey M. Smith", is positioned above the typed name.

JEFFREY M. SMITH, AICP
Senior Planner

Attachments: Project Location Map
Conceptual Site Plan

MARCH JOINT POWERS AUTHORITY



October 17, 2016

Sandonne Goad

Chairperson

Gabrielino/Tongva Nation

106 ½ Judge John Aiso Street, #231

Los Angeles, CA 90012

VIA CERTIFIED MAIL

Re: SB 18 Tribal Consultation - Veterans Industrial Park 215

Dear Ms. Goad:

The Veterans Industrial Park 215 (VIP 215) project is being referred to the **Gabrielino/Tongva Nation** to provide written notification in compliance with Senate Bill 18 (Tribal Consultation). As such, and pursuant to Section 65352.3 (a)(2) of the Government Code, if you wish to initiate consultation, please submit your written request for consultation with March Joint Powers Authority (JPA) regarding this project and its potential impacts to tribal cultural resources within 90 days from receipt of this letter. Within 30 days of receiving your request, the JPA will begin the consultation process.

The VIP 215 project site is located directly southeast of the Interstate 215 Freeway off-ramp at Van Buren Boulevard, south of the existing March Field Air Museum, and west of an existing March Air Reserve Base airport runway, in Riverside County. A map of the project location map and conceptual site plan are attached for reference. The proposed project is seeking a Plot Plan, **General Plan Amendment, Specific Plan, Parcel Map and Development Agreement** in support of the development of industrial buildings that would allow for a mix of (non-aviation) logistics center uses that could support wholesale, storage, distribution, manufacturing and/or assembly center uses. A total of 2,219,852 square feet of building space is proposed in two buildings with parking, landscaping, drainage facilities and off-site improvements. The proposed project site encompasses 142.5 acres.

We understand the information you provide may be sensitive, protected or confidential. Any information provided, or any exchange of information regarding tribal cultural resources as a result of consultation with the JPA, will be recorded and managed in accordance with state law (CA Code Regs. 15120(d), Public Resources Code 5097.9, 5097.993, 21082.3).

If you wish to initiate consultation, please respond in writing within 90 days from receipt of this letter to me via email at jemasm@msn.com or via letter to March Joint Powers Authority, 14205 Meridian Parkway, Suite 140, Riverside, CA 92518. If you have any questions, please contact me at (951) 656-7000. Thank you.

Sincerely,

JEFFREY M. SMITH, AICP

Senior Planner

Attachments: Project Location Map
Conceptual Site Plan

MARCH JOINT POWERS AUTHORITY



October 17, 2016

Andrew Salas

Chairperson

Gabrieleno Band of Mission Indians – Kizh Nation

P.O. Box 393

Covina, CA 91723

VIA CERTIFIED MAIL

Re: SB 18 Tribal Consultation - Veterans Industrial Park 215

Dear Mr. Salas:

The Veterans Industrial Park 215 (VIP 215) project is being referred to the **Gabrieleno Band of Mission Indians-Kizh Nation** to provide written notification in compliance with Senate Bill 18 (Tribal Consultation). As such, and pursuant to Section 65352.3 (a)(2) of the Government Code, if you wish to initiate consultation, please submit your written request for consultation with March Joint Powers Authority (JPA) regarding this project and its potential impacts to tribal cultural resources within 90 days from receipt of this letter. Within 30 days of receiving your request, the JPA will begin the consultation process.

The VIP 215 project site is located directly southeast of the Interstate 215 Freeway off-ramp at Van Buren Boulevard, south of the existing March Field Air Museum, and west of an existing March Air Reserve Base airport runway, in Riverside County. A map of the project location map and conceptual site plan are attached for reference. The proposed project is seeking a Plot Plan, **General Plan Amendment, Specific Plan, Parcel Map** and Development Agreement in support of the development of industrial buildings that would allow for a mix of (non-aviation) logistics center uses that could support wholesale, storage, distribution, manufacturing and/or assembly center uses. A total of 2,219,852 square feet of building space is proposed in two buildings with parking, landscaping, drainage facilities and off-site improvements. The proposed project site encompasses 142.5 acres.

We understand the information you provide may be sensitive, protected or confidential. Any information provided, or any exchange of information regarding tribal cultural resources as a result of consultation with the JPA, will be recorded and managed in accordance with state law (CA Code Regs. 15120(d), Public Resources Code 5097.9, 5097.993, 21082.3).

If you wish to initiate consultation, please respond in writing within 90 days from receipt of this letter to me via email at jemas@msn.com or via letter to March Joint Powers Authority, 14205 Meridian Parkway, Suite 140, Riverside, CA 92518. If you have any questions, please contact me at (951) 656-7000. Thank you.

Sincerely,

A handwritten signature in blue ink, reading "Jeffrey M. Smith", is positioned above the typed name.

JEFFREY M. SMITH, AICP

Senior Planner

Attachments: Project Location Map
Conceptual Site Plan

MARCH JOINT POWERS AUTHORITY



October 17, 2016

Anthony Morales

Chairperson

Gabrieleno/Tongva San Gabriel Band of Mission Indians

P.O. Box 693

San Gabriel, CA 91778

VIA CERTIFIED MAIL

Re: SB 18 Tribal Consultation - Veterans Industrial Park 215

Dear Mr. Morales:

The Veterans Industrial Park 215 (VIP 215) project is being referred to the **Gabrieleno/Tongva San Gabriel Band of Mission Indians** to provide written notification in compliance with Senate Bill 18 (Tribal Consultation). As such, and pursuant to Section 65352.3 (a)(2) of the Government Code, if you wish to initiate consultation, please submit your written request for consultation with March Joint Powers Authority (JPA) regarding this project and its potential impacts to tribal cultural resources within 90 days from receipt of this letter. Within 30 days of receiving your request, the JPA will begin the consultation process.

The VIP 215 project site is located directly southeast of the Interstate 215 Freeway off-ramp at Van Buren Boulevard, south of the existing March Field Air Museum, and west of an existing March Air Reserve Base airport runway, in Riverside County. A map of the project location map and conceptual site plan are attached for reference. The proposed project is seeking a Plot Plan, **General Plan Amendment, Specific Plan**, Parcel Map and Development Agreement in support of the development of industrial buildings that would allow for a mix of (non-aviation) logistics center uses that could support wholesale, storage, distribution, manufacturing and/or assembly center uses. A total of 2,219,852 square feet of building space is proposed in two buildings with parking, landscaping, drainage facilities and off-site improvements. The proposed project site encompasses 142.5 acres.

We understand the information you provide may be sensitive, protected or confidential. Any information provided, or any exchange of information regarding tribal cultural resources as a result of consultation with the JPA, will be recorded and managed in accordance with state law (CA Code Regs. 15120(d), Public Resources Code 5097.9, 5097.993, 21082.3).

If you wish to initiate consultation, please respond in writing within 90 days from receipt of this letter to me via email at jemasm@msn.com or via letter to March Joint Powers Authority, 14205 Meridian Parkway, Suite 140, Riverside, CA 92518. If you have any questions, please contact me at (951) 656-7000. Thank you.

Sincerely,

JEFFREY M. SMITH, AICP

Senior Planner

Attachments: Project Location Map
Conceptual Site Plan

MARCH JOINT POWERS AUTHORITY



October 17, 2016

Erica Pinto
Chairperson
Jamul Indian Village
P.O. Box 612
Jamul, CA 91935

VIA CERTIFIED MAIL

Re: **SB 18 Tribal Consultation - Veterans Industrial Park 215**

Dear Ms. Pinto:

The Veterans Industrial Park 215 (VIP 215) project is being referred to the **Jamul Indian Village** to provide written notification in compliance with Senate Bill 18 (Tribal Consultation). As such, and pursuant to Section 65352.3 (a)(2) of the Government Code, if you wish to initiate consultation, please submit your written request for consultation with March Joint Powers Authority (JPA) regarding this project and its potential impacts to tribal cultural resources within 90 days from receipt of this letter. Within 30 days of receiving your request, the JPA will begin the consultation process.

The VIP 215 project site is located directly southeast of the Interstate 215 Freeway off-ramp at Van Buren Boulevard, south of the existing March Field Air Museum, and west of an existing March Air Reserve Base airport runway, in Riverside County. A map of the project location map and conceptual site plan are attached for reference. The proposed project is seeking a Plot Plan, **General Plan Amendment, Specific Plan**, Parcel Map and Development Agreement in support of the development of industrial buildings that would allow for a mix of (non-aviation) logistics center uses that could support wholesale, storage, distribution, manufacturing and/or assembly center uses. A total of 2,219,852 square feet of building space is proposed in two buildings with parking, landscaping, drainage facilities and off-site improvements. The proposed project site encompasses 142.5 acres.

We understand the information you provide may be sensitive, protected or confidential. Any information provided, or any exchange of information regarding tribal cultural resources as a result of consultation with the JPA, will be recorded and managed in accordance with state law (CA Code Regs. 15120(d), Public Resources Code 5097.9, 5097.993, 21082.3).

If you wish to initiate consultation, please respond in writing within 90 days from receipt of this letter to me via email at jemasm@msn.com or via letter to March Joint Powers Authority, 14205 Meridian Parkway, Suite 140, Riverside, CA 92518. If you have any questions, please contact me at (951) 656-7000. Thank you.

Sincerely,

A handwritten signature in blue ink, reading "Jeffrey M. Smith", is positioned above the printed name.

JEFFREY M. SMITH, AICP
Senior Planner

Attachments: Project Location Map
Conceptual Site Plan

MARCH JOINT POWERS AUTHORITY



October 17, 2016

Thomas Rodriguez
Chairperson
La Jolla Band of Luiseno Indians
22000 Highway 76
Pauma Valley, CA 92061

VIA CERTIFIED MAIL

Re: SB 18 Tribal Consultation - Veterans Industrial Park 215

Dear Mr. Rodriguez:

The Veterans Industrial Park 215 (VIP 215) project is being referred to the **La Jolla Band of Luiseno Indians** to provide written notification in compliance with Senate Bill 18 (Tribal Consultation). As such, and pursuant to Section 65352.3 (a)(2) of the Government Code, if you wish to initiate consultation, please submit your written request for consultation with March Joint Powers Authority (JPA) regarding this project and its potential impacts to tribal cultural resources within 90 days from receipt of this letter. Within 30 days of receiving your request, the JPA will begin the consultation process.

The VIP 215 project site is located directly southeast of the Interstate 215 Freeway off-ramp at Van Buren Boulevard, south of the existing March Field Air Museum, and west of an existing March Air Reserve Base airport runway, in Riverside County. A map of the project location map and conceptual site plan are attached for reference. The proposed project is seeking a Plot Plan, **General Plan Amendment, Specific Plan**, Parcel Map and Development Agreement in support of the development of industrial buildings that would allow for a mix of (non-aviation) logistics center uses that could support wholesale, storage, distribution, manufacturing and/or assembly center uses. A total of 2,219,852 square feet of building space is proposed in two buildings with parking, landscaping, drainage facilities and off-site improvements. The proposed project site encompasses 142.5 acres.

We understand the information you provide may be sensitive, protected or confidential. Any information provided, or any exchange of information regarding tribal cultural resources as a result of consultation with the JPA, will be recorded and managed in accordance with state law (CA Code Regs. 15120(d), Public Resources Code 5097.9, 5097.993, 21082.3).

If you wish to initiate consultation, please respond in writing within 90 days from receipt of this letter to me via email at jemasm@msn.com or via letter to March Joint Powers Authority, 14205 Meridian Parkway, Suite 140, Riverside, CA 92518. If you have any questions, please contact me at (951) 656-7000. Thank you.

Sincerely,

JEFFREY M. SMITH, AICP
Senior Planner

Attachments: Project Location Map
Conceptual Site Plan

MARCH JOINT POWERS AUTHORITY



October 17, 2016

Gwendolyn Parada
Chairperson
La Posta Band of Mission Indians
8 Crestwood Road
Boulevard, CA 91905

VIA CERTIFIED MAIL

Re: SB 18 Tribal Consultation - Veterans Industrial Park 215

Dear Ms. Parada:

The Veterans Industrial Park 215 (VIP 215) project is being referred to the **La Posta Band of Mission Indians** to provide written notification in compliance with Senate Bill 18 (Tribal Consultation). As such, and pursuant to Section 65352.3 (a)(2) of the Government Code, if you wish to initiate consultation, please submit your written request for consultation with March Joint Powers Authority (JPA) regarding this project and its potential impacts to tribal cultural resources within 90 days from receipt of this letter. Within 30 days of receiving your request, the JPA will begin the consultation process.

The VIP 215 project site is located directly southeast of the Interstate 215 Freeway off-ramp at Van Buren Boulevard, south of the existing March Field Air Museum, and west of an existing March Air Reserve Base airport runway, in Riverside County. A map of the project location map and conceptual site plan are attached for reference. The proposed project is seeking a Plot Plan, **General Plan Amendment, Specific Plan**, Parcel Map and Development Agreement in support of the development of industrial buildings that would allow for a mix of (non-aviation) logistics center uses that could support wholesale, storage, distribution, manufacturing and/or assembly center uses. A total of 2,219,852 square feet of building space is proposed in two buildings with parking, landscaping, drainage facilities and off-site improvements. The proposed project site encompasses 142.5 acres.

We understand the information you provide may be sensitive, protected or confidential. Any information provided, or any exchange of information regarding tribal cultural resources as a result of consultation with the JPA, will be recorded and managed in accordance with state law (CA Code Regs. 15120(d), Public Resources Code 5097.9, 5097.993, 21082.3).

If you wish to initiate consultation, please respond in writing within 90 days from receipt of this letter to me via email at jemasm@msn.com or via letter to March Joint Powers Authority, 14205 Meridian Parkway, Suite 140, Riverside, CA 92518. If you have any questions, please contact me at (951) 656-7000. Thank you.

Sincerely,

A handwritten signature in blue ink, reading "Jeffrey M. Smith", is positioned above the typed name.

JEFFREY M. SMITH, AICP
Senior Planner

Attachments: Project Location Map
Conceptual Site Plan

MARCH JOINT POWERS AUTHORITY



October 17, 2016

Javaughn Miller
Tribal Administrator
La Posta Band of Mission Indians
8 Crestwood Road
Boulevard, CA 91905

VIA CERTIFIED MAIL

Re: SB 18 Tribal Consultation - Veterans Industrial Park 215

Dear Mr. Miller:

The Veterans Industrial Park 215 (VIP 215) project is being referred to the **La Posta Band of Mission Indians** to provide written notification in compliance with Senate Bill 18 (Tribal Consultation). As such, and pursuant to Section 65352.3 (a)(2) of the Government Code, if you wish to initiate consultation, please submit your written request for consultation with March Joint Powers Authority (JPA) regarding this project and its potential impacts to tribal cultural resources within 90 days from receipt of this letter. Within 30 days of receiving your request, the JPA will begin the consultation process.

The VIP 215 project site is located directly southeast of the Interstate 215 Freeway off-ramp at Van Buren Boulevard, south of the existing March Field Air Museum, and west of an existing March Air Reserve Base airport runway, in Riverside County. A map of the project location map and conceptual site plan are attached for reference. The proposed project is seeking a Plot Plan, **General Plan Amendment, Specific Plan**, Parcel Map and Development Agreement in support of the development of industrial buildings that would allow for a mix of (non-aviation) logistics center uses that could support wholesale, storage, distribution, manufacturing and/or assembly center uses. A total of 2,219,852 square feet of building space is proposed in two buildings with parking, landscaping, drainage facilities and off-site improvements. The proposed project site encompasses 142.5 acres.

We understand the information you provide may be sensitive, protected or confidential. Any information provided, or any exchange of information regarding tribal cultural resources as a result of consultation with the JPA, will be recorded and managed in accordance with state law (CA Code Regs. 15120(d), Public Resources Code 5097.9, 5097.993, 21082.3).

If you wish to initiate consultation, please respond in writing within 90 days from receipt of this letter to me via email at jemasm@msn.com or via letter to March Joint Powers Authority, 14205 Meridian Parkway, Suite 140, Riverside, CA 92518. If you have any questions, please contact me at (951) 656-7000. Thank you.

Sincerely,

JEFFREY M. SMITH, AICP
Senior Planner

Attachments: Project Location Map
Conceptual Site Plan

MARCH JOINT POWERS AUTHORITY



October 17, 2016

Shane Chapparosa

Chairman

Los Coyotes Band of Mission Indians

P.O. Box 189

Warner Springs, CA 92086

VIA CERTIFIED MAIL

Re: SB 18 Tribal Consultation - Veterans Industrial Park 215

Dear Mr. Chapparosa:

The Veterans Industrial Park 215 (VIP 215) project is being referred to the **Los Coyotes Band of Mission Indians** to provide written notification in compliance with Senate Bill 18 (Tribal Consultation). As such, and pursuant to Section 65352.3 (a)(2) of the Government Code, if you wish to initiate consultation, please submit your written request for consultation with March Joint Powers Authority (JPA) regarding this project and its potential impacts to tribal cultural resources within 90 days from receipt of this letter. Within 30 days of receiving your request, the JPA will begin the consultation process.

The VIP 215 project site is located directly southeast of the Interstate 215 Freeway off-ramp at Van Buren Boulevard, south of the existing March Field Air Museum, and west of an existing March Air Reserve Base airport runway, in Riverside County. A map of the project location map and conceptual site plan are attached for reference. The proposed project is seeking a Plot Plan, **General Plan Amendment, Specific Plan, Parcel Map and Development Agreement** in support of the development of industrial buildings that would allow for a mix of (non-aviation) logistics center uses that could support wholesale, storage, distribution, manufacturing and/or assembly center uses. A total of 2,219,852 square feet of building space is proposed in two buildings with parking, landscaping, drainage facilities and off-site improvements. The proposed project site encompasses 142.5 acres.

We understand the information you provide may be sensitive, protected or confidential. Any information provided, or any exchange of information regarding tribal cultural resources as a result of consultation with the JPA, will be recorded and managed in accordance with state law (CA Code Regs. 15120(d), Public Resources Code 5097.9, 5097.993, 21082.3).

If you wish to initiate consultation, please respond in writing within 90 days from receipt of this letter to me via email at jemasm@msn.com or via letter to March Joint Powers Authority, 14205 Meridian Parkway, Suite 140, Riverside, CA 92518. If you have any questions, please contact me at (951) 656-7000. Thank you.

Sincerely,

JEFFREY M. SMITH, AICP

Senior Planner

Attachments: Project Location Map
Conceptual Site Plan

MARCH JOINT POWERS AUTHORITY



October 17, 2016

Angela Elliot Santos

Chairperson

Manzanita Band of Kumeyaay Nation

P.O. Box 1302

Boulevard, CA 91905

VIA CERTIFIED MAIL

Re: SB 18 Tribal Consultation - Veterans Industrial Park 215

Dear Ms. Santos:

The Veterans Industrial Park 215 (VIP 215) project is being referred to the **Manzanita Band of Kumeyaay Nation** to provide written notification in compliance with Senate Bill 18 (Tribal Consultation). As such, and pursuant to Section 65352.3 (a)(2) of the Government Code, if you wish to initiate consultation, please submit your written request for consultation with March Joint Powers Authority (JPA) regarding this project and its potential impacts to tribal cultural resources within 90 days from receipt of this letter. Within 30 days of receiving your request, the JPA will begin the consultation process.

The VIP 215 project site is located directly southeast of the Interstate 215 Freeway off-ramp at Van Buren Boulevard, south of the existing March Field Air Museum, and west of an existing March Air Reserve Base airport runway, in Riverside County. A map of the project location map and conceptual site plan are attached for reference. The proposed project is seeking a Plot Plan, **General Plan Amendment, Specific Plan**, Parcel Map and Development Agreement in support of the development of industrial buildings that would allow for a mix of (non-aviation) logistics center uses that could support wholesale, storage, distribution, manufacturing and/or assembly center uses. A total of 2,219,852 square feet of building space is proposed in two buildings with parking, landscaping, drainage facilities and off-site improvements. The proposed project site encompasses 142.5 acres.

We understand the information you provide may be sensitive, protected or confidential. Any information provided, or any exchange of information regarding tribal cultural resources as a result of consultation with the JPA, will be recorded and managed in accordance with state law (CA Code Regs. 15120(d), Public Resources Code 5097.9, 5097.993, 21082.3).

If you wish to initiate consultation, please respond in writing within 90 days from receipt of this letter to me via email at jemasm@msn.com or via letter to March Joint Powers Authority, 14205 Meridian Parkway, Suite 140, Riverside, CA 92518. If you have any questions, please contact me at (951) 656-7000. Thank you.

Sincerely,

JEFFREY M. SMITH, AICP

Senior Planner

Attachments: Project Location Map
Conceptual Site Plan

MARCH JOINT POWERS AUTHORITY



October 17, 2016

Virgil Oyos
Chairperson
Mesa Grande Band of Mission Indians
P.O. Box 270
Santa Ysabel, CA 92070

VIA CERTIFIED MAIL

Re: **SB 18 Tribal Consultation - Veterans Industrial Park 215**

Dear Ms. Oyos:

The Veterans Industrial Park 215 (VIP 215) project is being referred to the **Mesa Grande Band of Mission Indians** to provide written notification in compliance with Senate Bill 18 (Tribal Consultation). As such, and pursuant to Section 65352.3 (a)(2) of the Government Code, if you wish to initiate consultation, please submit your written request for consultation with March Joint Powers Authority (JPA) regarding this project and its potential impacts to tribal cultural resources within 90 days from receipt of this letter. Within 30 days of receiving your request, the JPA will begin the consultation process.

The VIP 215 project site is located directly southeast of the Interstate 215 Freeway off-ramp at Van Buren Boulevard, south of the existing March Field Air Museum, and west of an existing March Air Reserve Base airport runway, in Riverside County. A map of the project location map and conceptual site plan are attached for reference. The proposed project is seeking a Plot Plan, **General Plan Amendment, Specific Plan, Parcel Map and Development Agreement** in support of the development of industrial buildings that would allow for a mix of (non-aviation) logistics center uses that could support wholesale, storage, distribution, manufacturing and/or assembly center uses. A total of 2,219,852 square feet of building space is proposed in two buildings with parking, landscaping, drainage facilities and off-site improvements. The proposed project site encompasses 142.5 acres.

We understand the information you provide may be sensitive, protected or confidential. Any information provided, or any exchange of information regarding tribal cultural resources as a result of consultation with the JPA, will be recorded and managed in accordance with state law (CA Code Regs. 15120(d), Public Resources Code 5097.9, 5097.993, 21082.3).

If you wish to initiate consultation, please respond in writing within 90 days from receipt of this letter to me via email at jemasm@msn.com or via letter to March Joint Powers Authority, 14205 Meridian Parkway, Suite 140, Riverside, CA 92518. If you have any questions, please contact me at (951) 656-7000. Thank you.

Sincerely,

JEFFREY M. SMITH, AICP
Senior Planner

Attachments: Project Location Map
Conceptual Site Plan

MARCH JOINT POWERS AUTHORITY



October 17, 2016

Robert Martin
Chairperson
Morongo Band of Mission Indians
12700 Pumarra Road
Banning, CA 92220

VIA CERTIFIED MAIL

Re: SB 18 Tribal Consultation - Veterans Industrial Park 215

Dear Mr. Martin:

The Veterans Industrial Park 215 (VIP 215) project is being referred to the **Morongo Band of Mission Indians** to provide written notification in compliance with Senate Bill 18 (Tribal Consultation). As such, and pursuant to Section 65352.3 (a)(2) of the Government Code, if you wish to initiate consultation, please submit your written request for consultation with March Joint Powers Authority (JPA) regarding this project and its potential impacts to tribal cultural resources within 90 days from receipt of this letter. Within 30 days of receiving your request, the JPA will begin the consultation process.

The VIP 215 project site is located directly southeast of the Interstate 215 Freeway off-ramp at Van Buren Boulevard, south of the existing March Field Air Museum, and west of an existing March Air Reserve Base airport runway, in Riverside County. A map of the project location map and conceptual site plan are attached for reference. The proposed project is seeking a Plot Plan, **General Plan Amendment, Specific Plan, Parcel Map and Development Agreement** in support of the development of industrial buildings that would allow for a mix of (non-aviation) logistics center uses that could support wholesale, storage, distribution, manufacturing and/or assembly center uses. A total of 2,219,852 square feet of building space is proposed in two buildings with parking, landscaping, drainage facilities and off-site improvements. The proposed project site encompasses 142.5 acres.

We understand the information you provide may be sensitive, protected or confidential. Any information provided, or any exchange of information regarding tribal cultural resources as a result of consultation with the JPA, will be recorded and managed in accordance with state law (CA Code Regs. 15120(d), Public Resources Code 5097.9, 5097.993, 21082.3).

If you wish to initiate consultation, please respond in writing within 90 days from receipt of this letter to me via email at jemasm@msn.com or via letter to March Joint Powers Authority, 14205 Meridian Parkway, Suite 140, Riverside, CA 92518. If you have any questions, please contact me at (951) 656-7000. Thank you.

Sincerely,

JEFFREY M. SMITH, AICP
Senior Planner

Attachments: Project Location Map
Conceptual Site Plan

MARCH JOINT POWERS AUTHORITY



October 17, 2016

Robert Smith
Chairperson
Pala Band of Mission Indians
12196 Pala Mission Road
Pala, CA 92059

VIA CERTIFIED MAIL

Re: SB 18 Tribal Consultation - Veterans Industrial Park 215

Dear Mr. Smith:

The Veterans Industrial Park 215 (VIP 215) project is being referred to the **Pala Band of Mission Indians** to provide written notification in compliance with Senate Bill 18 (Tribal Consultation). As such, and pursuant to Section 65352.3 (a)(2) of the Government Code, if you wish to initiate consultation, please submit your written request for consultation with March Joint Powers Authority (JPA) regarding this project and its potential impacts to tribal cultural resources within 90 days from receipt of this letter. Within 30 days of receiving your request, the JPA will begin the consultation process.

The VIP 215 project site is located directly southeast of the Interstate 215 Freeway off-ramp at Van Buren Boulevard, south of the existing March Field Air Museum, and west of an existing March Air Reserve Base airport runway, in Riverside County. A map of the project location map and conceptual site plan are attached for reference. The proposed project is seeking a Plot Plan, **General Plan Amendment, Specific Plan, Parcel Map and Development Agreement** in support of the development of industrial buildings that would allow for a mix of (non-aviation) logistics center uses that could support wholesale, storage, distribution, manufacturing and/or assembly center uses. A total of 2,219,852 square feet of building space is proposed in two buildings with parking, landscaping, drainage facilities and off-site improvements. The proposed project site encompasses 142.5 acres.

We understand the information you provide may be sensitive, protected or confidential. Any information provided, or any exchange of information regarding tribal cultural resources as a result of consultation with the JPA, will be recorded and managed in accordance with state law (CA Code Regs. 15120(d), Public Resources Code 5097.9, 5097.993, 21082.3).

If you wish to initiate consultation, please respond in writing within 90 days from receipt of this letter to me via email at jemasm@msn.com or via letter to March Joint Powers Authority, 14205 Meridian Parkway, Suite 140, Riverside, CA 92518. If you have any questions, please contact me at (951) 656-7000. Thank you.

Sincerely,

JEFFREY M. SMITH, AICP
Senior Planner

Attachments: Project Location Map
Conceptual Site Plan

MARCH JOINT POWERS AUTHORITY



October 17, 2016

Temet Aguilar

Chairperson

Pauma Band of Luiseno Indians – Pauma & Yuima Reservation

P.O. Box 369

Pauma Valley, CA 92061

VIA CERTIFIED MAIL

Re: SB 18 Tribal Consultation - Veterans Industrial Park 215

Dear Mr. Aguilar:

The Veterans Industrial Park 215 (VIP 215) project is being referred to the **Pauma Band of Luiseno Indians – Pauma & Yuima Reservation** to provide written notification in compliance with Senate Bill 18 (Tribal Consultation). As such, and pursuant to Section 65352.3 (a)(2) of the Government Code, if you wish to initiate consultation, please submit your written request for consultation with March Joint Powers Authority (JPA) regarding this project and its potential impacts to tribal cultural resources within 90 days from receipt of this letter. Within 30 days of receiving your request, the JPA will begin the consultation process.

The VIP 215 project site is located directly southeast of the Interstate 215 Freeway off-ramp at Van Buren Boulevard, south of the existing March Field Air Museum, and west of an existing March Air Reserve Base airport runway, in Riverside County. A map of the project location map and conceptual site plan are attached for reference. The proposed project is seeking a Plot Plan, **General Plan Amendment, Specific Plan, Parcel Map and Development Agreement** in support of the development of industrial buildings that would allow for a mix of (non-aviation) logistics center uses that could support wholesale, storage, distribution, manufacturing and/or assembly center uses. A total of 2,219,852 square feet of building space is proposed in two buildings with parking, landscaping, drainage facilities and off-site improvements. The proposed project site encompasses 142.5 acres.

We understand the information you provide may be sensitive, protected or confidential. Any information provided, or any exchange of information regarding tribal cultural resources as a result of consultation with the JPA, will be recorded and managed in accordance with state law (CA Code Regs. 15120(d), Public Resources Code 5097.9, 5097.993, 21082.3).

If you wish to initiate consultation, please respond in writing within 90 days from receipt of this letter to me via email at jemas@msn.com or via letter to March Joint Powers Authority, 14205 Meridian Parkway, Suite 140, Riverside, CA 92518. If you have any questions, please contact me at (951) 656-7000. Thank you.

Sincerely,

JEFFREY M. SMITH, AICP

Senior Planner

Attachments: Project Location Map
Conceptual Site Plan

MARCH JOINT POWERS AUTHORITY



October 17, 2016

Mark Macarro
Chairperson
Pechanga Band of Mission Indians
P.O. Box 1477
Temecula, CA 92593

VIA CERTIFIED MAIL

Re: SB 18 Tribal Consultation - Veterans Industrial Park 215

Dear Mr. Macarro:

The Veterans Industrial Park 215 (VIP 215) project is being referred to the **Pechanga Band of Mission Indians** to provide written notification in compliance with Senate Bill 18 (Tribal Consultation). As such, and pursuant to Section 65352.3 (a)(2) of the Government Code, if you wish to initiate consultation, please submit your written request for consultation with March Joint Powers Authority (JPA) regarding this project and its potential impacts to tribal cultural resources within 90 days from receipt of this letter. Within 30 days of receiving your request, the JPA will begin the consultation process.

The VIP 215 project site is located directly southeast of the Interstate 215 Freeway off-ramp at Van Buren Boulevard, south of the existing March Field Air Museum, and west of an existing March Air Reserve Base airport runway, in Riverside County. A map of the project location map and conceptual site plan are attached for reference. The proposed project is seeking a Plot Plan, **General Plan Amendment, Specific Plan**, Parcel Map and Development Agreement in support of the development of industrial buildings that would allow for a mix of (non-aviation) logistics center uses that could support wholesale, storage, distribution, manufacturing and/or assembly center uses. A total of 2,219,852 square feet of building space is proposed in two buildings with parking, landscaping, drainage facilities and off-site improvements. The proposed project site encompasses 142.5 acres.

We understand the information you provide may be sensitive, protected or confidential. Any information provided, or any exchange of information regarding tribal cultural resources as a result of consultation with the JPA, will be recorded and managed in accordance with state law (CA Code Regs. 15120(d), Public Resources Code 5097.9, 5097.993, 21082.3).

If you wish to initiate consultation, please respond in writing within 90 days from receipt of this letter to me via email at jemasm@msn.com or via letter to March Joint Powers Authority, 14205 Meridian Parkway, Suite 140, Riverside, CA 92518. If you have any questions, please contact me at (951) 656-7000. Thank you.

Sincerely,

JEFFREY M. SMITH, AICP
Senior Planner

Attachments: Project Location Map
Conceptual Site Plan

MARCH JOINT POWERS AUTHORITY



October 17, 2016

Joseph Hamilton

Chairperson

Ramona Band of Cahuilla Mission Indians

P.O. Box 391670

Anza, CA 92539

VIA CERTIFIED MAIL

Re: SB 18 Tribal Consultation - Veterans Industrial Park 215

Dear Mr. Hamilton:

The Veterans Industrial Park 215 (VIP 215) project is being referred to the **Ramona Band of Cahuilla Mission Indians** to provide written notification in compliance with Senate Bill 18 (Tribal Consultation). As such, and pursuant to Section 65352.3 (a)(2) of the Government Code, if you wish to initiate consultation, please submit your written request for consultation with March Joint Powers Authority (JPA) regarding this project and its potential impacts to tribal cultural resources within 90 days from receipt of this letter. Within 30 days of receiving your request, the JPA will begin the consultation process.

The VIP 215 project site is located directly southeast of the Interstate 215 Freeway off-ramp at Van Buren Boulevard, south of the existing March Field Air Museum, and west of an existing March Air Reserve Base airport runway, in Riverside County. A map of the project location map and conceptual site plan are attached for reference. The proposed project is seeking a Plot Plan, **General Plan Amendment, Specific Plan, Parcel Map and Development Agreement** in support of the development of industrial buildings that would allow for a mix of (non-aviation) logistics center uses that could support wholesale, storage, distribution, manufacturing and/or assembly center uses. A total of 2,219,852 square feet of building space is proposed in two buildings with parking, landscaping, drainage facilities and off-site improvements. The proposed project site encompasses 142.5 acres.

We understand the information you provide may be sensitive, protected or confidential. Any information provided, or any exchange of information regarding tribal cultural resources as a result of consultation with the JPA, will be recorded and managed in accordance with state law (CA Code Regs. 15120(d), Public Resources Code 5097.9, 5097.993, 21082.3).

If you wish to initiate consultation, please respond in writing within 90 days from receipt of this letter to me via email at jemasm@msn.com or via letter to March Joint Powers Authority, 14205 Meridian Parkway, Suite 140, Riverside, CA 92518. If you have any questions, please contact me at (951) 656-7000. Thank you.

Sincerely,

JEFFREY M. SMITH, AICP

Senior Planner

Attachments: Project Location Map
Conceptual Site Plan

MARCH JOINT POWERS AUTHORITY



October 17, 2016

Jim McPherson
Tribal Historic Preservation Officer
Rincon Band of Mission Indians
1 West Tribal Road
Valley Center, CA 92082

VIA CERTIFIED MAIL

Re: SB 18 Tribal Consultation - Veterans Industrial Park 215

Dear Mr. McPherson:

The Veterans Industrial Park 215 (VIP 215) project is being referred to the **Rincon Band of Mission Indians** to provide written notification in compliance with Senate Bill 18 (Tribal Consultation). As such, and pursuant to Section 65352.3 (a)(2) of the Government Code, if you wish to initiate consultation, please submit your written request for consultation with March Joint Powers Authority (JPA) regarding this project and its potential impacts to tribal cultural resources within 90 days from receipt of this letter. Within 30 days of receiving your request, the JPA will begin the consultation process.

The VIP 215 project site is located directly southeast of the Interstate 215 Freeway off-ramp at Van Buren Boulevard, south of the existing March Field Air Museum, and west of an existing March Air Reserve Base airport runway, in Riverside County. A map of the project location map and conceptual site plan are attached for reference. The proposed project is seeking a Plot Plan, **General Plan Amendment, Specific Plan, Parcel Map and Development Agreement** in support of the development of industrial buildings that would allow for a mix of (non-aviation) logistics center uses that could support wholesale, storage, distribution, manufacturing and/or assembly center uses. A total of 2,219,852 square feet of building space is proposed in two buildings with parking, landscaping, drainage facilities and off-site improvements. The proposed project site encompasses 142.5 acres.

We understand the information you provide may be sensitive, protected or confidential. Any information provided, or any exchange of information regarding tribal cultural resources as a result of consultation with the JPA, will be recorded and managed in accordance with state law (CA Code Regs. 15120(d), Public Resources Code 5097.9, 5097.993, 21082.3).

If you wish to initiate consultation, please respond in writing within 90 days from receipt of this letter to me via email at jemasn@msn.com or via letter to March Joint Powers Authority, 14205 Meridian Parkway, Suite 140, Riverside, CA 92518. If you have any questions, please contact me at (951) 656-7000. Thank you.

Sincerely,

A handwritten signature in blue ink, reading "Jeffrey M. Smith", is positioned above the typed name.

JEFFREY M. SMITH, AICP
Senior Planner

Attachments: Project Location Map
Conceptual Site Plan

MARCH JOINT POWERS AUTHORITY



October 17, 2016

Bo Mazzetti
Chairperson
Rincon Band of Mission Indians
1 West Tribal Road
Valley Center, CA 92082

VIA CERTIFIED MAIL

Re: SB 18 Tribal Consultation - Veterans Industrial Park 215

Dear Mr. Mazzetti:

The Veterans Industrial Park 215 (VIP 215) project is being referred to the **Rincon Band of Mission Indians** to provide written notification in compliance with Senate Bill 18 (Tribal Consultation). As such, and pursuant to Section 65352.3 (a)(2) of the Government Code, if you wish to initiate consultation, please submit your written request for consultation with March Joint Powers Authority (JPA) regarding this project and its potential impacts to tribal cultural resources within 90 days from receipt of this letter. Within 30 days of receiving your request, the JPA will begin the consultation process.

The VIP 215 project site is located directly southeast of the Interstate 215 Freeway off-ramp at Van Buren Boulevard, south of the existing March Field Air Museum, and west of an existing March Air Reserve Base airport runway, in Riverside County. A map of the project location map and conceptual site plan are attached for reference. The proposed project is seeking a Plot Plan, **General Plan Amendment, Specific Plan, Parcel Map and Development Agreement** in support of the development of industrial buildings that would allow for a mix of (non-aviation) logistics center uses that could support wholesale, storage, distribution, manufacturing and/or assembly center uses. A total of 2,219,852 square feet of building space is proposed in two buildings with parking, landscaping, drainage facilities and off-site improvements. The proposed project site encompasses 142.5 acres.

We understand the information you provide may be sensitive, protected or confidential. Any information provided, or any exchange of information regarding tribal cultural resources as a result of consultation with the JPA, will be recorded and managed in accordance with state law (CA Code Regs. 15120(d), Public Resources Code 5097.9, 5097.993, 21082.3).

If you wish to initiate consultation, please respond in writing within 90 days from receipt of this letter to me via email at [jemasm@msn.com](mailto:jemas@msn.com) or via letter to March Joint Powers Authority, 14205 Meridian Parkway, Suite 140, Riverside, CA 92518. If you have any questions, please contact me at (951) 656-7000. Thank you.

Sincerely,

JEFFREY M. SMITH, AICP
Senior Planner

Attachments: Project Location Map
Conceptual Site Plan

MARCH JOINT POWERS AUTHORITY



October 17, 2016

John Valenzuela
Chairperson
San Fernando Band of Mission Indians
P.O. Box 221838
Newhall, CA 91322

VIA CERTIFIED MAIL

Re: SB 18 Tribal Consultation - Veterans Industrial Park 215

Dear Mr. Valenzuela:

The Veterans Industrial Park 215 (VIP 215) project is being referred to the **San Fernando Band of Mission Indians** to provide written notification in compliance with Senate Bill 18 (Tribal Consultation). As such, and pursuant to Section 65352.3 (a)(2) of the Government Code, if you wish to initiate consultation, please submit your written request for consultation with March Joint Powers Authority (JPA) regarding this project and its potential impacts to tribal cultural resources within 90 days from receipt of this letter. Within 30 days of receiving your request, the JPA will begin the consultation process.

The VIP 215 project site is located directly southeast of the Interstate 215 Freeway off-ramp at Van Buren Boulevard, south of the existing March Field Air Museum, and west of an existing March Air Reserve Base airport runway, in Riverside County. A map of the project location map and conceptual site plan are attached for reference. The proposed project is seeking a Plot Plan, **General Plan Amendment, Specific Plan, Parcel Map and Development Agreement** in support of the development of industrial buildings that would allow for a mix of (non-aviation) logistics center uses that could support wholesale, storage, distribution, manufacturing and/or assembly center uses. A total of 2,219,852 square feet of building space is proposed in two buildings with parking, landscaping, drainage facilities and off-site improvements. The proposed project site encompasses 142.5 acres.

We understand the information you provide may be sensitive, protected or confidential. Any information provided, or any exchange of information regarding tribal cultural resources as a result of consultation with the JPA, will be recorded and managed in accordance with state law (CA Code Regs. 15120(d), Public Resources Code 5097.9, 5097.993, 21082.3).

If you wish to initiate consultation, please respond in writing within 90 days from receipt of this letter to me via email at jemas@msn.com or via letter to March Joint Powers Authority, 14205 Meridian Parkway, Suite 140, Riverside, CA 92518. If you have any questions, please contact me at (951) 656-7000. Thank you.

Sincerely,

A handwritten signature in blue ink, reading "Jeffrey M. Smith", is positioned above the printed name and title.

JEFFREY M. SMITH, AICP
Senior Planner

Attachments: Project Location Map
Conceptual Site Plan

MARCH JOINT POWERS AUTHORITY



October 17, 2016

Lee Clauss

Director of Cultural Resources
San Manuel Band of Mission Indians
26569 Community Center
Highland, CA 92346

VIA CERTIFIED MAIL

Re: SB 18 Tribal Consultation - Veterans Industrial Park 215

Dear Mr. Clauss:

The Veterans Industrial Park 215 (VIP 215) project is being referred to the **San Manuel Band of Mission Indians** to provide written notification in compliance with Senate Bill 18 (Tribal Consultation). As such, and pursuant to Section 65352.3 (a)(2) of the Government Code, if you wish to initiate consultation, please submit your written request for consultation with March Joint Powers Authority (JPA) regarding this project and its potential impacts to tribal cultural resources within 90 days from receipt of this letter. Within 30 days of receiving your request, the JPA will begin the consultation process.

The VIP 215 project site is located directly southeast of the Interstate 215 Freeway off-ramp at Van Buren Boulevard, south of the existing March Field Air Museum, and west of an existing March Air Reserve Base airport runway, in Riverside County. A map of the project location map and conceptual site plan are attached for reference. The proposed project is seeking a Plot Plan, **General Plan Amendment, Specific Plan, Parcel Map and Development Agreement** in support of the development of industrial buildings that would allow for a mix of (non-aviation) logistics center uses that could support wholesale, storage, distribution, manufacturing and/or assembly center uses. A total of 2,219,852 square feet of building space is proposed in two buildings with parking, landscaping, drainage facilities and off-site improvements. The proposed project site encompasses 142.5 acres.

We understand the information you provide may be sensitive, protected or confidential. Any information provided, or any exchange of information regarding tribal cultural resources as a result of consultation with the JPA, will be recorded and managed in accordance with state law (CA Code Regs. 15120(d), Public Resources Code 5097.9, 5097.993, 21082.3).

If you wish to initiate consultation, please respond in writing within 90 days from receipt of this letter to me via email at jemasm@msn.com or via letter to March Joint Powers Authority, 14205 Meridian Parkway, Suite 140, Riverside, CA 92518. If you have any questions, please contact me at (951) 656-7000. Thank you.

Sincerely,

JEFFREY M. SMITH, AICP
Senior Planner

Attachments: Project Location Map
Conceptual Site Plan

MARCH JOINT POWERS AUTHORITY



October 17, 2016

Allen E. Lawson
Chairperson
San Pasqual Band of Mission Indians
26569 Community Center
Highland, CA 92346

VIA CERTIFIED MAIL

Re: SB 18 Tribal Consultation - Veterans Industrial Park 215

Dear Mr. Lawson:

The Veterans Industrial Park 215 (VIP 215) project is being referred to the **San Pasqual Band of Mission Indians** to provide written notification in compliance with Senate Bill 18 (Tribal Consultation). As such, and pursuant to Section 65352.3 (a)(2) of the Government Code, if you wish to initiate consultation, please submit your written request for consultation with March Joint Powers Authority (JPA) regarding this project and its potential impacts to tribal cultural resources within 90 days from receipt of this letter. Within 30 days of receiving your request, the JPA will begin the consultation process.

The VIP 215 project site is located directly southeast of the Interstate 215 Freeway off-ramp at Van Buren Boulevard, south of the existing March Field Air Museum, and west of an existing March Air Reserve Base airport runway, in Riverside County. A map of the project location map and conceptual site plan are attached for reference. The proposed project is seeking a Plot Plan, **General Plan Amendment, Specific Plan, Parcel Map and Development Agreement** in support of the development of industrial buildings that would allow for a mix of (non-aviation) logistics center uses that could support wholesale, storage, distribution, manufacturing and/or assembly center uses. A total of 2,219,852 square feet of building space is proposed in two buildings with parking, landscaping, drainage facilities and off-site improvements. The proposed project site encompasses 142.5 acres.

We understand the information you provide may be sensitive, protected or confidential. Any information provided, or any exchange of information regarding tribal cultural resources as a result of consultation with the JPA, will be recorded and managed in accordance with state law (CA Code Regs. 15120(d), Public Resources Code 5097.9, 5097.993, 21082.3).

If you wish to initiate consultation, please respond in writing within 90 days from receipt of this letter to me via email at jemasm@msn.com or via letter to March Joint Powers Authority, 14205 Meridian Parkway, Suite 140, Riverside, CA 92518. If you have any questions, please contact me at (951) 656-7000. Thank you.

Sincerely,

JEFFREY M. SMITH, AICP
Senior Planner

Attachments: Project Location Map
Conceptual Site Plan

MARCH JOINT POWERS AUTHORITY



October 17, 2016

Steven Estrada
Chairman
Santa Rosa Band of Mission Indians
P.O. Box 391820
Anza, CA 92539

VIA CERTIFIED MAIL

Re: SB 18 Tribal Consultation - Veterans Industrial Park 215

Dear Mr. Estrada:

The Veterans Industrial Park 215 (VIP 215) project is being referred to the **Santa Rosa Band of Mission Indians** to provide written notification in compliance with Senate Bill 18 (Tribal Consultation). As such, and pursuant to Section 65352.3 (a)(2) of the Government Code, if you wish to initiate consultation, please submit your written request for consultation with March Joint Powers Authority (JPA) regarding this project and its potential impacts to tribal cultural resources within 90 days from receipt of this letter. Within 30 days of receiving your request, the JPA will begin the consultation process.

The VIP 215 project site is located directly southeast of the Interstate 215 Freeway off-ramp at Van Buren Boulevard, south of the existing March Field Air Museum, and west of an existing March Air Reserve Base airport runway, in Riverside County. A map of the project location map and conceptual site plan are attached for reference. The proposed project is seeking a Plot Plan, **General Plan Amendment, Specific Plan, Parcel Map and Development Agreement** in support of the development of industrial buildings that would allow for a mix of (non-aviation) logistics center uses that could support wholesale, storage, distribution, manufacturing and/or assembly center uses. A total of 2,219,852 square feet of building space is proposed in two buildings with parking, landscaping, drainage facilities and off-site improvements. The proposed project site encompasses 142.5 acres.

We understand the information you provide may be sensitive, protected or confidential. Any information provided, or any exchange of information regarding tribal cultural resources as a result of consultation with the JPA, will be recorded and managed in accordance with state law (CA Code Regs. 15120(d), Public Resources Code 5097.9, 5097.993, 21082.3).

If you wish to initiate consultation, please respond in writing within 90 days from receipt of this letter to me via email at jemasm@msn.com or via letter to March Joint Powers Authority, 14205 Meridian Parkway, Suite 140, Riverside, CA 92518. If you have any questions, please contact me at (951) 656-7000. Thank you.

Sincerely,

A handwritten signature in blue ink, reading "Jeffrey M. Smith", is written over a light blue circular stamp.

JEFFREY M. SMITH, AICP
Senior Planner

Attachments: Project Location Map
Conceptual Site Plan

MARCH JOINT POWERS AUTHORITY



October 17, 2016

Goldie Walker
Chairperson
Serrano Nation of Mission Indians
P.O. Box 343
Patton, CA 92369

VIA CERTIFIED MAIL

Re: SB 18 Tribal Consultation - Veterans Industrial Park 215

Dear Ms. Walker:

The Veterans Industrial Park 215 (VIP 215) project is being referred to the **Serrano Nation of Mission Indians** to provide written notification in compliance with Senate Bill 18 (Tribal Consultation). As such, and pursuant to Section 65352.3 (a)(2) of the Government Code, if you wish to initiate consultation, please submit your written request for consultation with March Joint Powers Authority (JPA) regarding this project and its potential impacts to tribal cultural resources within 90 days from receipt of this letter. Within 30 days of receiving your request, the JPA will begin the consultation process.

The VIP 215 project site is located directly southeast of the Interstate 215 Freeway off-ramp at Van Buren Boulevard, south of the existing March Field Air Museum, and west of an existing March Air Reserve Base airport runway, in Riverside County. A map of the project location map and conceptual site plan are attached for reference. The proposed project is seeking a Plot Plan, **General Plan Amendment, Specific Plan, Parcel Map and Development Agreement** in support of the development of industrial buildings that would allow for a mix of (non-aviation) logistics center uses that could support wholesale, storage, distribution, manufacturing and/or assembly center uses. A total of 2,219,852 square feet of building space is proposed in two buildings with parking, landscaping, drainage facilities and off-site improvements. The proposed project site encompasses 142.5 acres.

We understand the information you provide may be sensitive, protected or confidential. Any information provided, or any exchange of information regarding tribal cultural resources as a result of consultation with the JPA, will be recorded and managed in accordance with state law (CA Code Regs. 15120(d), Public Resources Code 5097.9, 5097.993, 21082.3).

If you wish to initiate consultation, please respond in writing within 90 days from receipt of this letter to me via email at jemasm@msn.com or via letter to March Joint Powers Authority, 14205 Meridian Parkway, Suite 140, Riverside, CA 92518. If you have any questions, please contact me at (951) 656-7000. Thank you.

Sincerely,

JEFFREY M. SMITH, AICP
Senior Planner

Attachments: Project Location Map
Conceptual Site Plan

MARCH JOINT POWERS AUTHORITY



October 17, 2016

Rosemary Morillo

Chairperson

Soboba Band of Luiseno Indians

P.O. Box 487

San Jacinto, CA 92581

VIA CERTIFIED MAIL

Re: SB 18 Tribal Consultation - Veterans Industrial Park 215

Dear Ms. Morillo:

The Veterans Industrial Park 215 (VIP 215) project is being referred to the **Soboba Band of Luiseno Indians** to provide written notification in compliance with Senate Bill 18 (Tribal Consultation). As such, and pursuant to Section 65352.3 (a)(2) of the Government Code, if you wish to initiate consultation, please submit your written request for consultation with March Joint Powers Authority (JPA) regarding this project and its potential impacts to tribal cultural resources within 90 days from receipt of this letter. Within 30 days of receiving your request, the JPA will begin the consultation process.

The VIP 215 project site is located directly southeast of the Interstate 215 Freeway off-ramp at Van Buren Boulevard, south of the existing March Field Air Museum, and west of an existing March Air Reserve Base airport runway, in Riverside County. A map of the project location map and conceptual site plan are attached for reference. The proposed project is seeking a Plot Plan, **General Plan Amendment, Specific Plan, Parcel Map and Development Agreement** in support of the development of industrial buildings that would allow for a mix of (non-aviation) logistics center uses that could support wholesale, storage, distribution, manufacturing and/or assembly center uses. A total of 2,219,852 square feet of building space is proposed in two buildings with parking, landscaping, drainage facilities and off-site improvements. The proposed project site encompasses 142.5 acres.

We understand the information you provide may be sensitive, protected or confidential. Any information provided, or any exchange of information regarding tribal cultural resources as a result of consultation with the JPA, will be recorded and managed in accordance with state law (CA Code Regs. 15120(d), Public Resources Code 5097.9, 5097.993, 21082.3).

If you wish to initiate consultation, please respond in writing within 90 days from receipt of this letter to me via email at jemasm@msn.com or via letter to March Joint Powers Authority, 14205 Meridian Parkway, Suite 140, Riverside, CA 92518. If you have any questions, please contact me at (951) 656-7000. Thank you.

Sincerely,

A handwritten signature in blue ink, reading "Jeffrey M. Smith", is positioned above the typed name.

JEFFREY M. SMITH, AICP

Senior Planner

Attachments: Project Location Map
Conceptual Site Plan

MARCH JOINT POWERS AUTHORITY



October 17, 2016

Cody J. Martinez
Chairperson
Sycuan Band of the Kumeyaay Nation
1 Kwaaypaay Court
El Cajon, CA 92019

VIA CERTIFIED MAIL

Re: SB 18 Tribal Consultation - Veterans Industrial Park 215

Dear Mr. Martinez:

The Veterans Industrial Park 215 (VIP 215) project is being referred to the **San Pasqual Band of Mission Indians** to provide written notification in compliance with Senate Bill 18 (Tribal Consultation). As such, and pursuant to Section 65352.3 (a)(2) of the Government Code, if you wish to initiate consultation, please submit your written request for consultation with March Joint Powers Authority (JPA) regarding this project and its potential impacts to tribal cultural resources within 90 days from receipt of this letter. Within 30 days of receiving your request, the JPA will begin the consultation process.

The VIP 215 project site is located directly southeast of the Interstate 215 Freeway off-ramp at Van Buren Boulevard, south of the existing March Field Air Museum, and west of an existing March Air Reserve Base airport runway, in Riverside County. A map of the project location map and conceptual site plan are attached for reference. The proposed project is seeking a Plot Plan, **General Plan Amendment, Specific Plan, Parcel Map and Development Agreement** in support of the development of industrial buildings that would allow for a mix of (non-aviation) logistics center uses that could support wholesale, storage, distribution, manufacturing and/or assembly center uses. A total of 2,219,852 square feet of building space is proposed in two buildings with parking, landscaping, drainage facilities and off-site improvements. The proposed project site encompasses 142.5 acres.

We understand the information you provide may be sensitive, protected or confidential. Any information provided, or any exchange of information regarding tribal cultural resources as a result of consultation with the JPA, will be recorded and managed in accordance with state law (CA Code Regs. 15120(d), Public Resources Code 5097.9, 5097.993, 21082.3).

If you wish to initiate consultation, please respond in writing within 90 days from receipt of this letter to me via email at jemasm@msn.com or via letter to March Joint Powers Authority, 14205 Meridian Parkway, Suite 140, Riverside, CA 92518. If you have any questions, please contact me at (951) 656-7000. Thank you.

Sincerely,

A handwritten signature in blue ink, reading "Jeffrey M. Smith", is positioned above the printed name and title of the sender.

JEFFREY M. SMITH, AICP
Senior Planner

Attachments: Project Location Map
Conceptual Site Plan

MARCH JOINT POWERS AUTHORITY



October 17, 2016

Mary Resvaloso

Chairperson

Torres-Martinez Desert Cahuilla Indians

P.O. Box 1160

Thermal, CA 92274

VIA CERTIFIED MAIL

Re: SB 18 Tribal Consultation - Veterans Industrial Park 215

Dear Ms. Resvaloso:

The Veterans Industrial Park 215 (VIP 215) project is being referred to the **Torres-Martinez Desert Cahuilla Indians** to provide written notification in compliance with Senate Bill 18 (Tribal Consultation). As such, and pursuant to Section 65352.3 (a)(2) of the Government Code, if you wish to initiate consultation, please submit your written request for consultation with March Joint Powers Authority (JPA) regarding this project and its potential impacts to tribal cultural resources within 90 days from receipt of this letter. Within 30 days of receiving your request, the JPA will begin the consultation process.

The VIP 215 project site is located directly southeast of the Interstate 215 Freeway off-ramp at Van Buren Boulevard, south of the existing March Field Air Museum, and west of an existing March Air Reserve Base airport runway, in Riverside County. A map of the project location map and conceptual site plan are attached for reference. The proposed project is seeking a Plot Plan, **General Plan Amendment, Specific Plan, Parcel Map and Development Agreement** in support of the development of industrial buildings that would allow for a mix of (non-aviation) logistics center uses that could support wholesale, storage, distribution, manufacturing and/or assembly center uses. A total of 2,219,852 square feet of building space is proposed in two buildings with parking, landscaping, drainage facilities and off-site improvements. The proposed project site encompasses 142.5 acres.

We understand the information you provide may be sensitive, protected or confidential. Any information provided, or any exchange of information regarding tribal cultural resources as a result of consultation with the JPA, will be recorded and managed in accordance with state law (CA Code Regs. 15120(d), Public Resources Code 5097.9, 5097.993, 21082.3).

If you wish to initiate consultation, please respond in writing within 90 days from receipt of this letter to me via email at jemasm@msn.com or via letter to March Joint Powers Authority, 14205 Meridian Parkway, Suite 140, Riverside, CA 92518. If you have any questions, please contact me at (951) 656-7000. Thank you.

Sincerely,

JEFFREY M. SMITH, AICP

Senior Planner

Attachments: Project Location Map
Conceptual Site Plan

MARCH JOINT POWERS AUTHORITY



October 17, 2016

Robert J. Welch
Chairperson
Viejas Band of Kumeyaay Indians
1 Viejas Grade Road
Alpine, CA 91901

VIA CERTIFIED MAIL

Re: SB 18 Tribal Consultation - Veterans Industrial Park 215

Dear Mr. Welch:

The Veterans Industrial Park 215 (VIP 215) project is being referred to the **Viejas Band of Kumeyaay Indians** to provide written notification in compliance with Senate Bill 18 (Tribal Consultation). As such, and pursuant to Section 65352.3 (a)(2) of the Government Code, if you wish to initiate consultation, please submit your written request for consultation with March Joint Powers Authority (JPA) regarding this project and its potential impacts to tribal cultural resources within 90 days from receipt of this letter. Within 30 days of receiving your request, the JPA will begin the consultation process.

The VIP 215 project site is located directly southeast of the Interstate 215 Freeway off-ramp at Van Buren Boulevard, south of the existing March Field Air Museum, and west of an existing March Air Reserve Base airport runway, in Riverside County. A map of the project location map and conceptual site plan are attached for reference. The proposed project is seeking a Plot Plan, **General Plan Amendment, Specific Plan, Parcel Map and Development Agreement** in support of the development of industrial buildings that would allow for a mix of (non-aviation) logistics center uses that could support wholesale, storage, distribution, manufacturing and/or assembly center uses. A total of 2,219,852 square feet of building space is proposed in two buildings with parking, landscaping, drainage facilities and off-site improvements. The proposed project site encompasses 142.5 acres.

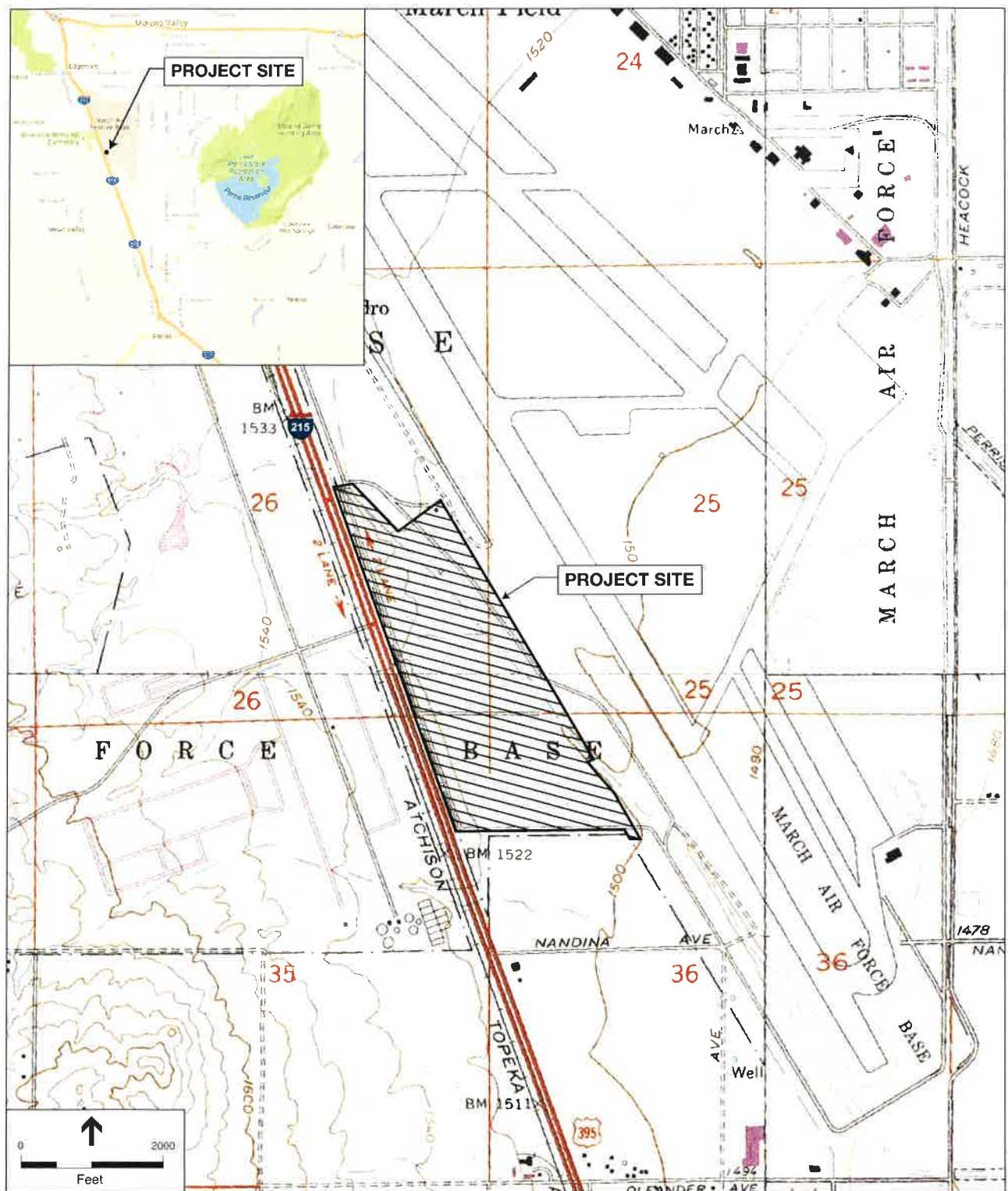
We understand the information you provide may be sensitive, protected or confidential. Any information provided, or any exchange of information regarding tribal cultural resources as a result of consultation with the JPA, will be recorded and managed in accordance with state law (CA Code Regs. 15120(d), Public Resources Code 5097.9, 5097.993, 21082.3).

If you wish to initiate consultation, please respond in writing within 90 days from receipt of this letter to me via email at jemas@msn.com or via letter to March Joint Powers Authority, 14205 Meridian Parkway, Suite 140, Riverside, CA 92518. If you have any questions, please contact me at (951) 656-7000. Thank you.

Sincerely,

JEFFREY M. SMITH, AICP
Senior Planner

Attachments: Project Location Map
Conceptual Site Plan



SOURCE: USGS - San Bernardino 7.5 min quad

Veteran's Industrial Park 215 . 150801

Figure 1
Project Location Map



SOURCE: RGA; ESRI Imagery

Veteran's Industrial Park 215 . 150801

Figure 2
Conceptual Site Plan

From: [Jessica Valdez](#)

Sent: Monday, November 21, 2016 3:53 PM

To: [jemasm@msn.com](mailto:jemas@msn.com)

Cc: [Joseph Ontiveros](#)

Jeffrey,

Please see the attached letter from Joseph Ontiveros, Cultural Resource Director, for the Soboba Band of Luiseño Indians, requesting SB 18 Consultation for the Veterans Industrial Park 215 (VIP 215) Project. A hard copy will be mailed, for your records. The Soboba Band of Luiseño Indians appreciates your observance of Tribal Cultural Resources and their preservation in your project.

Jessica Valdez

Soboba Band of Luiseño Indians

Cultural Resource Department

Office: (951)-654-5544 Ext: 4139

JValdez@soboba-nsn.gov

CONFIDENTIALITY NOTICE: This e-mail transmission, and any documents, files or previous e-mail messages attached to it may contain confidential information that is also legally privileged. If you are not the intended recipient, or a person responsible for delivering it to the intended recipient, you are hereby notified that any disclosure, copying, distribution or use of any of the information contained in or attached to this transmission is STRICTLY PROHIBITED. If you have received this transmission in error, please immediately notify the sender and immediately destroy the original transmission and its attachments without reading or saving in any manner. Thank you.

From: Jeff Smith

Sent: Tuesday, November 29, 2016 9:20 AM

To: 'JValdez@soboba-nsn.gov' <JValdez@soboba-nsn.gov>

Cc: 'jontiveros@soboba-nsn.gov' <jontiveros@soboba-nsn.gov>; 'Hoffer, Kathy' <Kathy.Hoffer@hillwood.com>

Subject: FW: Veterans Industrial Park 215

Good Morning Jessica,

Thank you for your letter and email dated, November 21, regarding formal SB 18 Consultation for the Veterans Industrial Park 215 (VIP 215). Please accept this email response as start of the consultation process.

I will add Soboba to our VIP 215 distribution list to receive any and all upcoming public notices and circulation of all documents, including EIR's, archaeological and cultural reports, development plans, conceptual grading plans and other documents pertaining to this project. Since the Applicant is finalizing their submittal, conceptual site plan and elevations along with a Cultural Assessment Report and Geotech Report can be uploaded from this link:

- <http://jmp.sh/Q19yO3w>

Once the Applicant has finalized their project submittal documentation, I will forward a full submittal package/information to you. In the meantime, if you have any additional questions or need information, please contact me at the email address or phone number below. Thank you and we look forward to this consultation process.

Jeffrey M. Smith, AICP
Senior Planner

March Joint Powers Authority
14205 Meridian Parkway, Suite 140 | Riverside, CA | 92518
Phone: (951) 656-7000 Fax: (951) 653-5558
Email: smith@marchjpa.com
Web: www.marchjpa.com

From: Jeffrey M. Smith [<mailto:JEMASM@msn.com>]

Sent: Wednesday, November 23, 2016 7:38 AM

To: Jeff Smith <smith@marchjpa.com>

Subject: Fw: Veterans Industrial Park 215

Soboba Request for consultation

Michael Houlihan

From: Joseph Ontiveros <jontiveros@soboba-nsn.gov>
Sent: Monday, July 23, 2018 3:42 PM
To: Jeff Smith
Cc: Mathew Evans; Jessica Valdez
Subject: RE: VIP 215 - SB 18 Consultation
Attachments: AB52_MarchJPA_Veterans Industrial Park (VIP) 215 Project.pdf; March_AB52_Request.pdf; Soboba Traditional Use Area Map.pdf

Jeff,

Thank you for taking my call earlier today. Attached you will find Soboba's formal request for consultation under AB52, along with our initial AB52 notification request letter sent in 2015. Please get back to me with some proposed dates and times so that we may schedule a consultation meeting sooner rather than later.

Sincerely,

Joseph Ontiveros

Tribal Historic Preservation Officer

Soboba Band of Luiseno Indians

P.O Box 487

San Jacinto, Ca 92581

P (951) 654-2765 ext.4137

C (951) 663-5279



CONFIDENTIALITY NOTICE: This e-mail transmission, and any documents, files or previous e-mail messages attached to it may contain confidential information that is also legally privileged. If you are not the intended recipient, or a person responsible for delivering it to the intended recipient, you are hereby notified that any disclosure, copying, distribution or use of any of the information contained in or attached to this transmission is STRICTLY PROHIBITED. If you have received this transmission in error, please immediately notify the sender and immediately destroy the original transmission and its attachments without reading or saving in any manner. Thank you.

From: Jeff Smith <smith@marchjpa.com>
Sent: Monday, July 23, 2018 2:54 PM
To: Joseph Ontiveros <jontiveros@soboba-nsn.gov>
Cc: Mathew Evans <evans@marchjpa.com>
Subject: RE: VIP 215 - SB 18 Consultation

Good Afternoon Joseph,

Last week, I called and sent you an email regarding the Veterans Industrial Park (VIP) 215 Project. The VIP 215 Project includes two high-cube warehouse buildings to be developed east of the I-215 Freeway, adjacent to March Air Reserve Base. As stated in my email below, the project has moved at a slow pace. Now the project is moving forward, including the preparation of a Draft EIR. Completion of this Draft is a few months away.

As stated below, I was asked to send you mitigation measure examples from two recently approved JPA Projects. As attached, Mitigation Measures from the Freeway Business Center Project and the Meridian West Campus – Lower Plateau Project. The attached examples focus on the Cultural Resources Mitigation Measures only. I wanted to get some feedback from you and see if these or similar mitigation measures, would be something you would like to be considered for the VIP 215 Project.

If you have any time this week, I would like to update you on the VIP 215 Project, discuss the attached mitigation measure examples and the continued consultation under SB 18. I look forward to hearing from you.

Thank you.



Jeffrey M. Smith, AICP
Senior Planner

March Joint Powers Authority
14205 Meridian Parkway, Suite 140
Riverside, CA 92518
Phone: (951) 656-7000
Fax: (951) 653-5558
Email: smith@marchjpa.com
Web: www.marchjpa.com

From: Jeff Smith
Sent: Thursday, July 19, 2018 2:07 PM
To: Joseph Ontiveros <jontiveros@soboba-nsn.gov>
Cc: Mathew Evans <evans@marchjpa.com>
Subject: VIP 215 - SB 18 Consultation

Good Afternoon Joseph,

Earlier this afternoon I left you a voice message regarding the VIP 215 Project. Since our last discussion in January 2017, the project moved at a slow pace. Now the project is moving forward. I would like to update you on the project, talk to you regarding the text/language for the mitigation/procedures from the Meridian Project you requested (see the email below), and see if you would like to continue consultation under SB 18.

I was asked to send you other mitigation measure examples but wanted to discuss this with you first before I send them. If you have some time this afternoon or tomorrow morning to discuss the VIP 215 Project, please give me a call. I look forward to hearing from you.

Thank you.



Jeffrey M. Smith, AICP
Senior Planner

March Joint Powers Authority
14205 Meridian Parkway, Suite 140
Riverside, CA 92518
Phone: (951) 656-7000
Fax: (951) 653-5558
Email: smith@marchjpa.com
Web: www.marchjpa.com

From: Jeff Smith
Sent: Tuesday, January 24, 2017 10:34 AM
To: Joseph Ontiveros <jontiveros@soboba-nsn.gov>
Subject: VIP 215 - SB 18 Consultation

Joseph,

Thank you for discussing the VIP 215 Project with me this morning. As discussed, I will find and provide you the text/language for the mitigation/procedures from the Meridian Project. I will give you a call sometime next week. Again, thanks for the discussion and look forward to the consultation.

Jeffrey M. Smith, AICP
Senior Planner

March Joint Powers Authority
14205 Meridian Parkway, Suite 140 | Riverside, CA | 92518
Phone: (951) 656-7000 Fax: (951) 653-5558
Email: smith@marchjpa.com
Web: www.marchjpa.com

MARCH JOINT POWERS AUTHORITY



October 10, 2016

Michael Mirelez

Cultural Resource Coordinator
Torres-Martinez Desert Cahuilla Indians
P.O. Box 1160
Thermal, CA 92274

VIA CERTIFIED MAIL

Re: AB 52 Consultation: Veterans Industrial Park 215

Dear Mr. Mirelez:

The subject project is being referred to the Torres-Martinez Desert Cahuilla Indians to provide written notification in compliance with Assembly Bill 52 (Native Americans: California Environmental Quality Act). As such, and pursuant to Section 21080.3.1 (d) of the Public Resource Code, if you wish to initiate consultation, please submit your written request for consultation with March Joint Powers Authority (JPA) regarding this project and its potential impacts to tribal cultural resources within 30 days from receipt of this letter. Within 30 days of receiving your request, the JPA will begin the consultation process.

A map of the project location map and conceptual site plan are attached for reference. The proposed project is seeking a Plot Plan, General Plan Amendment, Specific Plan, Parcel Map and Development Agreement in support of the development of industrial buildings that would allow for a mix of (non-aviation) logistics center uses that could support wholesale, storage, distribution, manufacturing and/or assembly center uses. A total of 2,219,852 square feet of building space is proposed in two buildings with parking, landscaping, drainage facilities and off-site improvements. The proposed project site encompasses 142.5 acres.

We understand the information you provide may be sensitive, protected or confidential. Any information provided, or any exchange of information regarding tribal cultural resources as a result of consultation with the JPA, will be recorded and managed in accordance with state law (CA Code Regs. 15120(d), Public Resources Code 5097.9, 5097.993, 21082.3).

If you wish to initiate consultation, please respond in writing within 30 days from receipt of this letter to me via email at jemasm@msn.com or via letter to March Joint Powers Authority, 14205 Meridian Parkway, Suite 140, Riverside, CA 92518. If you have any questions, please contact me at (951) 656-7000. Thank you.

Sincerely,



JEFFREY M. SMITH, AICP
Senior Planner

Attachments: Project Location Map
Conceptual Site Plan

MARCH JOINT POWERS AUTHORITY



October 10, 2016

Joseph Ontiveros
Cultural Resources Department
Soboba Band of Luiseno Indians
P.O. Box 487
San Jacinto, CA 92581

VIA CERTIFIED MAIL

Re: AB 52 Consultation: Veterans Industrial Park 215

Dear Mr. Ontiveros:

The subject project is being referred to the Soboba Band of Luiseno Indians to provide written notification in compliance with Assembly Bill 52 (Native Americans: California Environmental Quality Act). As such, and pursuant to Section 21080.3.1 (d) of the Public Resource Code, if you wish to initiate consultation, please submit your written request for consultation with March Joint Powers Authority (JPA) regarding this project and its potential impacts to tribal cultural resources within 30 days from receipt of this letter. Within 30 days of receiving your request, the JPA will begin the consultation process.

A map of the project location map and conceptual site plan are attached for reference. The proposed project is seeking a Plot Plan, General Plan Amendment, Specific Plan, Parcel Map and Development Agreement in support of the development of industrial buildings that would allow for a mix of (non-aviation) logistics center uses that could support wholesale, storage, distribution, manufacturing and/or assembly center uses. A total of 2,219,852 square feet of building space is proposed in two buildings with parking, landscaping, drainage facilities and off-site improvements. The proposed project site encompasses 142.5 acres.

We understand the information you provide may be sensitive, protected or confidential. Any information provided, or any exchange of information regarding tribal cultural resources as a result of consultation with the JPA, will be recorded and managed in accordance with state law (CA Code Regs. 15120(d), Public Resources Code 5097.9, 5097.993, 21082.3).

If you wish to initiate consultation, please respond in writing within 30 days from receipt of this letter to me via email at jemasm@msn.com or via letter to March Joint Powers Authority, 14205 Meridian Parkway, Suite 140, Riverside, CA 92518. If you have any questions, please contact me at (951) 656-7000. Thank you.

Sincerely,



JEFFREY M. SMITH, AICP
Senior Planner

Attachments: Project Location Map
Conceptual Site Plan

MARCH JOINT POWERS AUTHORITY

October 10, 2016

Goldie Walker

Chairperson

Serrano Nation of Mission Indians

P.O. Box 343

Patton, CA 92369

VIA CERTIFIED MAIL

Re: AB 52 Consultation: Veterans Industrial Park 215

Dear Ms. Walker:

The subject project is being referred to the Serrano Nation of Mission Indians to provide written notification in compliance with Assembly Bill 52 (Native Americans: California Environmental Quality Act). As such, and pursuant to Section 21080.3.1 (d) of the Public Resource Code, if you wish to initiate consultation, please submit your written request for consultation with March Joint Powers Authority (JPA) regarding this project and its potential impacts to tribal cultural resources within 30 days from receipt of this letter. Within 30 days of receiving your request, the JPA will begin the consultation process.

A map of the project location map and conceptual site plan are attached for reference. The proposed project is seeking a Plot Plan, General Plan Amendment, Specific Plan, Parcel Map and Development Agreement in support of the development of industrial buildings that would allow for a mix of (non-aviation) logistics center uses that could support wholesale, storage, distribution, manufacturing and/or assembly center uses. A total of 2,219,852 square feet of building space is proposed in two buildings with parking, landscaping, drainage facilities and off-site improvements. The proposed project site encompasses 142.5 acres.

We understand the information you provide may be sensitive, protected or confidential. Any information provided, or any exchange of information regarding tribal cultural resources as a result of consultation with the JPA, will be recorded and managed in accordance with state law (CA Code Regs. 15120(d), Public Resources Code 5097.9, 5097.993, 21082.3).

If you wish to initiate consultation, please respond in writing within 30 days from receipt of this letter to me via email at jemasm@msn.com or via letter to March Joint Powers Authority, 14205 Meridian Parkway, Suite 140, Riverside, CA 92518. If you have any questions, please contact me at (951) 656-7000. Thank you.

Sincerely,



JEFFREY M. SMITH, AICP

Senior Planner

Attachments: Project Location Map
Conceptual Site Plan

MARCH JOINT POWERS AUTHORITY



October 10, 2016

Steven Estrada
Chairman
Santa Rosa Band of Mission Indians
P.O. Box 391820
Anza, CA 92539

VIA CERTIFIED MAIL

Re: AB 52 Consultation: Veterans Industrial Park 215

Dear Mr. Estrada:

The subject project is being referred to the Santa Rosa Band of Mission Indians to provide written notification in compliance with Assembly Bill 52 (Native Americans: California Environmental Quality Act). As such, and pursuant to Section 21080.3.1 (d) of the Public Resource Code, if you wish to initiate consultation, please submit your written request for consultation with March Joint Powers Authority (JPA) regarding this project and its potential impacts to tribal cultural resources within 30 days from receipt of this letter. Within 30 days of receiving your request, the JPA will begin the consultation process.

A map of the project location map and conceptual site plan are attached for reference. The proposed project is seeking a Plot Plan, General Plan Amendment, Specific Plan, Parcel Map and Development Agreement in support of the development of industrial buildings that would allow for a mix of (non-aviation) logistics center uses that could support wholesale, storage, distribution, manufacturing and/or assembly center uses. A total of 2,219,852 square feet of building space is proposed in two buildings with parking, landscaping, drainage facilities and off-site improvements. The proposed project site encompasses 142.5 acres.

We understand the information you provide may be sensitive, protected or confidential. Any information provided, or any exchange of information regarding tribal cultural resources as a result of consultation with the JPA, will be recorded and managed in accordance with state law (CA Code Regs. 15120(d), Public Resources Code 5097.9, 5097.993, 21082.3).

If you wish to initiate consultation, please respond in writing within 30 days from receipt of this letter to me via email at jemasm@msn.com or via letter to March Joint Powers Authority, 14205 Meridian Parkway, Suite 140, Riverside, CA 92518. If you have any questions, please contact me at (951) 656-7000. Thank you.

Sincerely,



JEFFREY M. SMITH, AICP
Senior Planner

Attachments: Project Location Map
Conceptual Site Plan

MARCH JOINT POWERS AUTHORITY



October 10, 2016

Lynn Valbuena
Chairwoman
San Manuel Band of Mission Indians
26569 Community Center
Highland, CA 92346

VIA CERTIFIED MAIL

Re: AB 52 Consultation: Veterans Industrial Park 215

Dear Ms. Valbuena:

The subject project is being referred to the San Manuel Band of Mission Indians to provide written notification in compliance with Assembly Bill 52 (Native Americans: California Environmental Quality Act). As such, and pursuant to Section 21080.3.1 (d) of the Public Resource Code, if you wish to initiate consultation, please submit your written request for consultation with March Joint Powers Authority (JPA) regarding this project and its potential impacts to tribal cultural resources within 30 days from receipt of this letter. Within 30 days of receiving your request, the JPA will begin the consultation process.

A map of the project location map and conceptual site plan are attached for reference. The proposed project is seeking a Plot Plan, General Plan Amendment, Specific Plan, Parcel Map and Development Agreement in support of the development of industrial buildings that would allow for a mix of (non-aviation) logistics center uses that could support wholesale, storage, distribution, manufacturing and/or assembly center uses. A total of 2,219,852 square feet of building space is proposed in two buildings with parking, landscaping, drainage facilities and off-site improvements. The proposed project site encompasses 142.5 acres.

We understand the information you provide may be sensitive, protected or confidential. Any information provided, or any exchange of information regarding tribal cultural resources as a result of consultation with the JPA, will be recorded and managed in accordance with state law (CA Code Regs. 15120(d), Public Resources Code 5097.9, 5097.993, 21082.3).

If you wish to initiate consultation, please respond in writing within 30 days from receipt of this letter to me via email at jemasm@msn.com or via letter to March Joint Powers Authority, 14205 Meridian Parkway, Suite 140, Riverside, CA 92518. If you have any questions, please contact me at (951) 656-7000. Thank you.

Sincerely,



JEFFREY M. SMITH, AICP
Senior Planner

Attachments: Project Location Map
Conceptual Site Plan

MARCH JOINT POWERS AUTHORITY



October 10, 2016

Tribal Counsel

San Luis Rey Band of Mission Indians
1889 Sunset Drive
Vista, CA 92081

VIA CERTIFIED MAIL

Re: AB 52 Consultation: Veterans Industrial Park 215

Dear Tribal Counsel:

The subject project is being referred to the San Luis Rey Band of Mission Indians to provide written notification in compliance with Assembly Bill 52 (Native Americans: California Environmental Quality Act). As such, and pursuant to Section 21080.3.1 (d) of the Public Resource Code, if you wish to initiate consultation, please submit your written request for consultation with March Joint Powers Authority (JPA) regarding this project and its potential impacts to tribal cultural resources within 30 days from receipt of this letter. Within 30 days of receiving your request, the JPA will begin the consultation process.

A map of the project location map and conceptual site plan are attached for reference. The proposed project is seeking a Plot Plan, General Plan Amendment, Specific Plan, Parcel Map and Development Agreement in support of the development of industrial buildings that would allow for a mix of (non-aviation) logistics center uses that could support wholesale, storage, distribution, manufacturing and/or assembly center uses. A total of 2,219,852 square feet of building space is proposed in two buildings with parking, landscaping, drainage facilities and off-site improvements. The proposed project site encompasses 142.5 acres.

We understand the information you provide may be sensitive, protected or confidential. Any information provided, or any exchange of information regarding tribal cultural resources as a result of consultation with the JPA, will be recorded and managed in accordance with state law (CA Code Regs. 15120(d), Public Resources Code 5097.9, 5097.993, 21082.3).

If you wish to initiate consultation, please respond in writing within 30 days from receipt of this letter to me via email at jemasm@msn.com or via letter to March Joint Powers Authority, 14205 Meridian Parkway, Suite 140, Riverside, CA 92518. If you have any questions, please contact me at (951) 656-7000. Thank you.

Sincerely,



JEFFREY M. SMITH, AICP
Senior Planner

Attachments: Project Location Map
Conceptual Site Plan

MARCH JOINT POWERS AUTHORITY



October 10, 2016

Joseph Hamilton

Chairperson

Ramona Band of Chauilla Mission Indians

P.O. Box 391670

Anza, CA 92539

VIA CERTIFIED MAIL

Re: AB 52 Consultation: Veterans Industrial Park 215

Dear Mr. Hamilton:

The subject project is being referred to the Ramona Band of Chauilla Mission Indians to provide written notification in compliance with Assembly Bill 52 (Native Americans: California Environmental Quality Act). As such, and pursuant to Section 21080.3.1 (d) of the Public Resource Code, if you wish to initiate consultation, please submit your written request for consultation with March Joint Powers Authority (JPA) regarding this project and its potential impacts to tribal cultural resources within 30 days from receipt of this letter. Within 30 days of receiving your request, the JPA will begin the consultation process.

A map of the project location map and conceptual site plan are attached for reference. The proposed project is seeking a Plot Plan, General Plan Amendment, Specific Plan, Parcel Map and Development Agreement in support of the development of industrial buildings that would allow for a mix of (non-aviation) logistics center uses that could support wholesale, storage, distribution, manufacturing and/or assembly center uses. A total of 2,219,852 square feet of building space is proposed in two buildings with parking, landscaping, drainage facilities and off-site improvements. The proposed project site encompasses 142.5 acres.

We understand the information you provide may be sensitive, protected or confidential. Any information provided, or any exchange of information regarding tribal cultural resources as a result of consultation with the JPA, will be recorded and managed in accordance with state law (CA Code Regs. 15120(d), Public Resources Code 5097.9, 5097.993, 21082.3).

If you wish to initiate consultation, please respond in writing within 30 days from receipt of this letter to me via email at jemasm@msn.com or via letter to March Joint Powers Authority, 14205 Meridian Parkway, Suite 140, Riverside, CA 92518. If you have any questions, please contact me at (951) 656-7000. Thank you.

Sincerely,



JEFFREY M. SMITH, AICP
Senior Planner

Attachments: Project Location Map
Conceptual Site Plan

MARCH JOINT POWERS AUTHORITY



October 10, 2016

Temet Aguilar

Chairperson

Pauma Band of Luiseno Indians – Pauma & Yuima

P.O. Box 369

Pauma Valley, CA 92061

VIA CERTIFIED MAIL

Re: AB 52 Consultation: Veterans Industrial Park 215

Dear Mr. Aguilar:

The subject project is being referred to the Pauma Band of Luiseno Indians – Pauma & Yuima to provide written notification in compliance with Assembly Bill 52 (Native Americans: California Environmental Quality Act). As such, and pursuant to Section 21080.3.1 (d) of the Public Resource Code, if you wish to initiate consultation, please submit your written request for consultation with March Joint Powers Authority (JPA) regarding this project and its potential impacts to tribal cultural resources within 30 days from receipt of this letter. Within 30 days of receiving your request, the JPA will begin the consultation process.

A map of the project location map and conceptual site plan are attached for reference. The proposed project is seeking a Plot Plan, General Plan Amendment, Specific Plan, Parcel Map and Development Agreement in support of the development of industrial buildings that would allow for a mix of (non-aviation) logistics center uses that could support wholesale, storage, distribution, manufacturing and/or assembly center uses. A total of 2,219,852 square feet of building space is proposed in two buildings with parking, landscaping, drainage facilities and off-site improvements. The proposed project site encompasses 142.5 acres.

We understand the information you provide may be sensitive, protected or confidential. Any information provided, or any exchange of information regarding tribal cultural resources as a result of consultation with the JPA, will be recorded and managed in accordance with state law (CA Code Regs. 15120(d), Public Resources Code 5097.9, 5097.993, 21082.3).

If you wish to initiate consultation, please respond in writing within 30 days from receipt of this letter to me via email at jemasm@msn.com or via letter to March Joint Powers Authority, 14205 Meridian Parkway, Suite 140, Riverside, CA 92518. If you have any questions, please contact me at (951) 656-7000. Thank you.

Sincerely,

JEFFREY M. SMITH, AICP

Senior Planner

Attachments: Project Location Map
Conceptual Site Plan

MARCH JOINT POWERS AUTHORITY



October 10, 2016

Shasta Gaughen, Ph.D

Tribal Historic Preservation Officer
Pala Band of Mission Indians
PMB 50, 35008 Pala Temecula Road
Pala, CA 92059

VIA CERTIFIED MAIL

Re: AB 52 Consultation: Veterans Industrial Park 215

Dear Ms. Gaughen:

The subject project is being referred to the Pala Band of Mission Indians to provide written notification in compliance with Assembly Bill 52 (Native Americans: California Environmental Quality Act). As such, and pursuant to Section 21080.3.1 (d) of the Public Resource Code, if you wish to initiate consultation, please submit your written request for consultation with March Joint Powers Authority (JPA) regarding this project and its potential impacts to tribal cultural resources within 30 days from receipt of this letter. Within 30 days of receiving your request, the JPA will begin the consultation process.

A map of the project location map and conceptual site plan are attached for reference. The proposed project is seeking a Plot Plan, General Plan Amendment, Specific Plan, Parcel Map and Development Agreement in support of the development of industrial buildings that would allow for a mix of (non-aviation) logistics center uses that could support wholesale, storage, distribution, manufacturing and/or assembly center uses. A total of 2,219,852 square feet of building space is proposed in two buildings with parking, landscaping, drainage facilities and off-site improvements. The proposed project site encompasses 142.5 acres.

We understand the information you provide may be sensitive, protected or confidential. Any information provided, or any exchange of information regarding tribal cultural resources as a result of consultation with the JPA, will be recorded and managed in accordance with state law (CA Code Regs. 15120(d), Public Resources Code 5097.9, 5097.993, 21082.3).

If you wish to initiate consultation, please respond in writing within 30 days from receipt of this letter to me via email at jemasm@msn.com or via letter to March Joint Powers Authority, 14205 Meridian Parkway, Suite 140, Riverside, CA 92518. If you have any questions, please contact me at (951) 656-7000. Thank you.

Sincerely,



JEFFREY M. SMITH, AICP
Senior Planner

Attachments: Project Location Map
Conceptual Site Plan

MARCH JOINT POWERS AUTHORITY

October 10, 2016

Robert Martin
Chairperson
Morongo Band of Mission Indians
12700 Pumarra Road
Banning, CA 92220

VIA CERTIFIED MAIL

Re: AB 52 Consultation: Veterans Industrial Park 215

Dear Mr. Martin:

The subject project is being referred to the Morongo Band of Mission Indians to provide written notification in compliance with Assembly Bill 52 (Native Americans: California Environmental Quality Act). As such, and pursuant to Section 21080.3.1 (d) of the Public Resource Code, if you wish to initiate consultation, please submit your written request for consultation with March Joint Powers Authority (JPA) regarding this project and its potential impacts to tribal cultural resources within 30 days from receipt of this letter. Within 30 days of receiving your request, the JPA will begin the consultation process.

A map of the project location map and conceptual site plan are attached for reference. The proposed project is seeking a Plot Plan, General Plan Amendment, Specific Plan, Parcel Map and Development Agreement in support of the development of industrial buildings that would allow for a mix of (non-aviation) logistics center uses that could support wholesale, storage, distribution, manufacturing and/or assembly center uses. A total of 2,219,852 square feet of building space is proposed in two buildings with parking, landscaping, drainage facilities and off-site improvements. The proposed project site encompasses 142.5 acres.

We understand the information you provide may be sensitive, protected or confidential. Any information provided, or any exchange of information regarding tribal cultural resources as a result of consultation with the JPA, will be recorded and managed in accordance with state law (CA Code Regs. 15120(d), Public Resources Code 5097.9, 5097.993, 21082.3).

If you wish to initiate consultation, please respond in writing within 30 days from receipt of this letter to me via email at jemasm@msn.com or via letter to March Joint Powers Authority, 14205 Meridian Parkway, Suite 140, Riverside, CA 92518. If you have any questions, please contact me at (951) 656-7000. Thank you.

Sincerely,


JEFFREY M. SMITH, AICP
Senior Planner

Attachments: Project Location Map
Conceptual Site Plan

MARCH JOINT POWERS AUTHORITY



October 10, 2016

Shane Chapparosa

Chairman

Los Coyotes Band of Mission Indians

P.O. Box 189

Warner Springs, CA 92086

VIA CERTIFIED MAIL

Re: AB 52 Consultation: Veterans Industrial Park 215

Dear Mr. Chapparosa:

The subject project is being referred to the Los Coyotes Band of Mission Indians to provide written notification in compliance with Assembly Bill 52 (Native Americans: California Environmental Quality Act). As such, and pursuant to Section 21080.3.1 (d) of the Public Resource Code, if you wish to initiate consultation, please submit your written request for consultation with March Joint Powers Authority (JPA) regarding this project and its potential impacts to tribal cultural resources within 30 days from receipt of this letter. Within 30 days of receiving your request, the JPA will begin the consultation process.

A map of the project location map and conceptual site plan are attached for reference. The proposed project is seeking a Plot Plan, General Plan Amendment, Specific Plan, Parcel Map and Development Agreement in support of the development of industrial buildings that would allow for a mix of (non-aviation) logistics center uses that could support wholesale, storage, distribution, manufacturing and/or assembly center uses. A total of 2,219,852 square feet of building space is proposed in two buildings with parking, landscaping, drainage facilities and off-site improvements. The proposed project site encompasses 142.5 acres.

We understand the information you provide may be sensitive, protected or confidential. Any information provided, or any exchange of information regarding tribal cultural resources as a result of consultation with the JPA, will be recorded and managed in accordance with state law (CA Code Regs. 15120(d), Public Resources Code 5097.9, 5097.993, 21082.3).

If you wish to initiate consultation, please respond in writing within 30 days from receipt of this letter to me via email at jemasm@msn.com or via letter to March Joint Powers Authority, 14205 Meridian Parkway, Suite 140, Riverside, CA 92518. If you have any questions, please contact me at (951) 656-7000. Thank you.

Sincerely,

JEFFREY M. SMITH, AICP

Senior Planner

Attachments: Project Location Map
Conceptual Site Plan

MARCH JOINT POWERS AUTHORITY



October 10, 2016

Thomas Rodriguez

Chairperson

La Jolla Band of Mission Indians

22000 Highway 76

Pauma Valley, CA 92061

VIA CERTIFIED MAIL

Re: AB 52 Consultation: Veterans Industrial Park 215

Dear Mr. Rodriguez:

The subject project is being referred to the La Jolla Band of Mission Indians to provide written notification in compliance with Assembly Bill 52 (Native Americans: California Environmental Quality Act). As such, and pursuant to Section 21080.3.1 (d) of the Public Resource Code, if you wish to initiate consultation, please submit your written request for consultation with March Joint Powers Authority (JPA) regarding this project and its potential impacts to tribal cultural resources within 30 days from receipt of this letter. Within 30 days of receiving your request, the JPA will begin the consultation process.

A map of the project location map and conceptual site plan are attached for reference. The proposed project is seeking a Plot Plan, General Plan Amendment, Specific Plan, Parcel Map and Development Agreement in support of the development of industrial buildings that would allow for a mix of (non-aviation) logistics center uses that could support wholesale, storage, distribution, manufacturing and/or assembly center uses. A total of 2,219,852 square feet of building space is proposed in two buildings with parking, landscaping, drainage facilities and off-site improvements. The proposed project site encompasses 142.5 acres.

We understand the information you provide may be sensitive, protected or confidential. Any information provided, or any exchange of information regarding tribal cultural resources as a result of consultation with the JPA, will be recorded and managed in accordance with state law (CA Code Regs. 15120(d), Public Resources Code 5097.9, 5097.993, 21082.3).

If you wish to initiate consultation, please respond in writing within 30 days from receipt of this letter to me via email at jemasm@msn.com or via letter to March Joint Powers Authority, 14205 Meridian Parkway, Suite 140, Riverside, CA 92518. If you have any questions, please contact me at (951) 656-7000. Thank you.

Sincerely,

JEFFREY M. SMITH, AICP

Senior Planner

Attachments: Project Location Map
Conceptual Site Plan

MARCH JOINT POWERS AUTHORITY



October 10, 2016

Anthony Morales

Chairperson

Gabrieleno/Tongva San Gabriel Band of Mission Indians

P.O. Box 693

San Gabriel, CA 91778

VIA CERTIFIED MAIL

Re: AB 52 Consultation: Veterans Industrial Park 215

Dear Mr. Morales:

The subject project is being referred to the Gabrieleno/Tongva San Gabriel Band of Mission Indians to provide written notification in compliance with Assembly Bill 52 (Native Americans: California Environmental Quality Act). As such, and pursuant to Section 21080.3.1 (d) of the Public Resource Code, if you wish to initiate consultation, please submit your written request for consultation with March Joint Powers Authority (JPA) regarding this project and its potential impacts to tribal cultural resources within 30 days from receipt of this letter. Within 30 days of receiving your request, the JPA will begin the consultation process.

A map of the project location map and conceptual site plan are attached for reference. The proposed project is seeking a Plot Plan, General Plan Amendment, Specific Plan, Parcel Map and Development Agreement in support of the development of industrial buildings that would allow for a mix of (non-aviation) logistics center uses that could support wholesale, storage, distribution, manufacturing and/or assembly center uses. A total of 2,219,852 square feet of building space is proposed in two buildings with parking, landscaping, drainage facilities and off-site improvements. The proposed project site encompasses 142.5 acres.

We understand the information you provide may be sensitive, protected or confidential. Any information provided, or any exchange of information regarding tribal cultural resources as a result of consultation with the JPA, will be recorded and managed in accordance with state law (CA Code Regs. 15120(d), Public Resources Code 5097.9, 5097.993, 21082.3).

If you wish to initiate consultation, please respond in writing within 30 days from receipt of this letter to me via email at jemasm@msn.com or via letter to March Joint Powers Authority, 14205 Meridian Parkway, Suite 140, Riverside, CA 92518. If you have any questions, please contact me at (951) 656-7000. Thank you.

Sincerely,

A handwritten signature in blue ink, reading "Jeffrey M. Smith", is positioned above the printed name.

JEFFREY M. SMITH, AICP

Senior Planner

Attachments: Project Location Map
Conceptual Site Plan

MARCH JOINT POWERS AUTHORITY



October 10, 2016

Andrew Salas

Chairperson

Gabrieleno Band of Mission Indians – Kizh Nation

P.O. Box 393

Covina, CA 91723

VIA CERTIFIED MAIL

Re: AB 52 Consultation: Veterans Industrial Park 215

Dear Mr. Salas:

The subject project is being referred to the Gabrieleno Band of Mission Indians – Kizh Nation to provide written notification in compliance with Assembly Bill 52 (Native Americans: California Environmental Quality Act). As such, and pursuant to Section 21080.3.1 (d) of the Public Resource Code, if you wish to initiate consultation, please submit your written request for consultation with March Joint Powers Authority (JPA) regarding this project and its potential impacts to tribal cultural resources within 30 days from receipt of this letter. Within 30 days of receiving your request, the JPA will begin the consultation process.

A map of the project location map and conceptual site plan are attached for reference. The proposed project is seeking a Plot Plan, General Plan Amendment, Specific Plan, Parcel Map and Development Agreement in support of the development of industrial buildings that would allow for a mix of (non-aviation) logistics center uses that could support wholesale, storage, distribution, manufacturing and/or assembly center uses. A total of 2,219,852 square feet of building space is proposed in two buildings with parking, landscaping, drainage facilities and off-site improvements. The proposed project site encompasses 142.5 acres.

We understand the information you provide may be sensitive, protected or confidential. Any information provided, or any exchange of information regarding tribal cultural resources as a result of consultation with the JPA, will be recorded and managed in accordance with state law (CA Code Regs. 15120(d), Public Resources Code 5097.9, 5097.993, 21082.3).

If you wish to initiate consultation, please respond in writing within 30 days from receipt of this letter to me via email at jemasm@msn.com or via letter to March Joint Powers Authority, 14205 Meridian Parkway, Suite 140, Riverside, CA 92518. If you have any questions, please contact me at (951) 656-7000. Thank you.

Sincerely,

JEFFREY M. SMITH, AICP
Senior Planner

Attachments: Project Location Map
Conceptual Site Plan

MARCH JOINT POWERS AUTHORITY



October 10, 2016

Sandone Goad

Chairperson

Gabrielino/Tongva Nation

106 ½ Judge John Aiso Street, #231

Los Angeles, CA 90012

VIA CERTIFIED MAIL

Re: AB 52 Consultation: Veterans Industrial Park 215

Dear Ms. Goad:

The subject project is being referred to the Gabrielino/Tongva Nation to provide written notification in compliance with Assembly Bill 52 (Native Americans: California Environmental Quality Act). As such, and pursuant to Section 21080.3.1 (d) of the Public Resource Code, if you wish to initiate consultation, please submit your written request for consultation with March Joint Powers Authority (JPA) regarding this project and its potential impacts to tribal cultural resources within 30 days from receipt of this letter. Within 30 days of receiving your request, the JPA will begin the consultation process.

A map of the project location map and conceptual site plan are attached for reference. The proposed project is seeking a Plot Plan, General Plan Amendment, Specific Plan, Parcel Map and Development Agreement in support of the development of industrial buildings that would allow for a mix of (non-aviation) logistics center uses that could support wholesale, storage, distribution, manufacturing and/or assembly center uses. A total of 2,219,852 square feet of building space is proposed in two buildings with parking, landscaping, drainage facilities and off-site improvements. The proposed project site encompasses 142.5 acres.

We understand the information you provide may be sensitive, protected or confidential. Any information provided, or any exchange of information regarding tribal cultural resources as a result of consultation with the JPA, will be recorded and managed in accordance with state law (CA Code Regs. 15120(d), Public Resources Code 5097.9, 5097.993, 21082.3).

If you wish to initiate consultation, please respond in writing within 30 days from receipt of this letter to me via email at jemasm@msn.com or via letter to March Joint Powers Authority, 14205 Meridian Parkway, Suite 140, Riverside, CA 92518. If you have any questions, please contact me at (951) 656-7000. Thank you.

Sincerely,



JEFFREY M. SMITH, AICP
Senior Planner

Attachments: Project Location Map
Conceptual Site Plan

MARCH JOINT POWERS AUTHORITY



October 10, 2016

Bo Mazzetti
Chairperson
Rincon Band of Mission Indians
1 West Tribal Road
Valley Center, CA 92082

VIA CERTIFIED MAIL

Re: AB 52 Consultation: Veterans Industrial Park 215

Dear Mr. Mazzetti:

The subject project is being referred to the Rincon Band of Mission Indians to provide written notification in compliance with Assembly Bill 52 (Native Americans: California Environmental Quality Act). As such, and pursuant to Section 21080.3.1 (d) of the Public Resource Code, if you wish to initiate consultation, please submit your written request for consultation with March Joint Powers Authority (JPA) regarding this project and its potential impacts to tribal cultural resources within 30 days from receipt of this letter. Within 30 days of receiving your request, the JPA will begin the consultation process.

A map of the project location map and conceptual site plan are attached for reference. The proposed project is seeking a Plot Plan, General Plan Amendment, Specific Plan, Parcel Map and Development Agreement in support of the development of industrial buildings that would allow for a mix of (non-aviation) logistics center uses that could support wholesale, storage, distribution, manufacturing and/or assembly center uses. A total of 2,219,852 square feet of building space is proposed in two buildings with parking, landscaping, drainage facilities and off-site improvements. The proposed project site encompasses 142.5 acres.

We understand the information you provide may be sensitive, protected or confidential. Any information provided, or any exchange of information regarding tribal cultural resources as a result of consultation with the JPA, will be recorded and managed in accordance with state law (CA Code Regs. 15120(d), Public Resources Code 5097.9, 5097.993, 21082.3).

If you wish to initiate consultation, please respond in writing within 30 days from receipt of this letter to me via email at jemasm@msn.com or via letter to March Joint Powers Authority, 14205 Meridian Parkway, Suite 140, Riverside, CA 92518. If you have any questions, please contact me at (951) 656-7000. Thank you.

Sincerely,



JEFFREY M. SMITH, AICP
Senior Planner

Attachments: Project Location Map
Conceptual Site Plan

MARCH JOINT POWERS AUTHORITY

October 10, 2016

Luther Salgado
Chairperson
Cahuilla Band of Indians
P.O. Box 391760
Anza, CA 92539

VIA CERTIFIED MAIL

Re: AB 52 Consultation: Veterans Industrial Park 215

Dear Mr. Salgado:

The subject project is being referred to the Cahuilla Band of Indians to provide written notification in compliance with Assembly Bill 52 (Native Americans: California Environmental Quality Act). As such, and pursuant to Section 21080.3.1 (d) of the Public Resource Code, if you wish to initiate consultation, please submit your written request for consultation with March Joint Powers Authority (JPA) regarding this project and its potential impacts to tribal cultural resources within 30 days from receipt of this letter. Within 30 days of receiving your request, the JPA will begin the consultation process.

A map of the project location map and conceptual site plan are attached for reference. The proposed project is seeking a Plot Plan, General Plan Amendment, Specific Plan, Parcel Map and Development Agreement in support of the development of industrial buildings that would allow for a mix of (non-aviation) logistics center uses that could support wholesale, storage, distribution, manufacturing and/or assembly center uses. A total of 2,219,852 square feet of building space is proposed in two buildings with parking, landscaping, drainage facilities and off-site improvements. The proposed project site encompasses 142.5 acres.

We understand the information you provide may be sensitive, protected or confidential. Any information provided, or any exchange of information regarding tribal cultural resources as a result of consultation with the JPA, will be recorded and managed in accordance with state law (CA Code Regs. 15120(d), Public Resources Code 5097.9, 5097.993, 21082.3).

If you wish to initiate consultation, please respond in writing within 30 days from receipt of this letter to me via email at jemasm@msn.com or via letter to March Joint Powers Authority, 14205 Meridian Parkway, Suite 140, Riverside, CA 92518. If you have any questions, please contact me at (951) 656-7000. Thank you.

Sincerely,



JEFFREY M. SMITH, AICP
Senior Planner

Attachments: Project Location Map
Conceptual Site Plan

MARCH JOINT POWERS AUTHORITY



October 10, 2016

Judy Stapp

Director of Cultural Affairs
Cabazon Band of Mission Indians
84-245 Indio Springs Parkway
Indio, CA 92203

VIA CERTIFIED MAIL

Re: AB 52 Consultation: Veterans Industrial Park 215

Dear Ms. Stapp:

The subject project is being referred to the Cabazon Band of Mission Indians to provide written notification in compliance with Assembly Bill 52 (Native Americans: California Environmental Quality Act). As such, and pursuant to Section 21080.3.1 (d) of the Public Resource Code, if you wish to initiate consultation, please submit your written request for consultation with March Joint Powers Authority (JPA) regarding this project and its potential impacts to tribal cultural resources within 30 days from receipt of this letter. Within 30 days of receiving your request, the JPA will begin the consultation process.

A map of the project location map and conceptual site plan are attached for reference. The proposed project is seeking a Plot Plan, General Plan Amendment, Specific Plan, Parcel Map and Development Agreement in support of the development of industrial buildings that would allow for a mix of (non-aviation) logistics center uses that could support wholesale, storage, distribution, manufacturing and/or assembly center uses. A total of 2,219,852 square feet of building space is proposed in two buildings with parking, landscaping, drainage facilities and off-site improvements. The proposed project site encompasses 142.5 acres.

We understand the information you provide may be sensitive, protected or confidential. Any information provided, or any exchange of information regarding tribal cultural resources as a result of consultation with the JPA, will be recorded and managed in accordance with state law (CA Code Regs. 15120(d), Public Resources Code 5097.9, 5097.993, 21082.3).

If you wish to initiate consultation, please respond in writing within 30 days from receipt of this letter to me via email at jemasm@msn.com or via letter to March Joint Powers Authority, 14205 Meridian Parkway, Suite 140, Riverside, CA 92518. If you have any questions, please contact me at (951) 656-7000. Thank you.

Sincerely,



JEFFREY M. SMITH, AICP
Senior Planner

Attachments: Project Location Map
Conceptual Site Plan

MARCH JOINT POWERS AUTHORITY

October 10, 2016

Amanda Vance

Chairperson

Augustine Band of Cahuilla Mission Indians

P.O. Box 846

Coachella, CA 92236

VIA CERTIFIED MAIL

Re: AB 52 Consultation: Veterans Industrial Park 215

Dear Ms. Vance:

The subject project is being referred to the Augustine Band of Cahuilla Mission Indians to provide written notification in compliance with Assembly Bill 52 (Native Americans: California Environmental Quality Act). As such, and pursuant to Section 21080.3.1 (d) of the Public Resource Code, if you wish to initiate consultation, please submit your written request for consultation with March Joint Powers Authority (JPA) regarding this project and its potential impacts to tribal cultural resources within 30 days from receipt of this letter. Within 30 days of receiving your request, the JPA will begin the consultation process.

A map of the project location map and conceptual site plan are attached for reference. The proposed project is seeking a Plot Plan, General Plan Amendment, Specific Plan, Parcel Map and Development Agreement in support of the development of industrial buildings that would allow for a mix of (non-aviation) logistics center uses that could support wholesale, storage, distribution, manufacturing and/or assembly center uses. A total of 2,219,852 square feet of building space is proposed in two buildings with parking, landscaping, drainage facilities and off-site improvements. The proposed project site encompasses 142.5 acres.

We understand the information you provide may be sensitive, protected or confidential. Any information provided, or any exchange of information regarding tribal cultural resources as a result of consultation with the JPA, will be recorded and managed in accordance with state law (CA Code Regs. 15120(d), Public Resources Code 5097.9, 5097.993, 21082.3).

If you wish to initiate consultation, please respond in writing within 30 days from receipt of this letter to me via email at jemasm@msn.com or via letter to March Joint Powers Authority, 14205 Meridian Parkway, Suite 140, Riverside, CA 92518. If you have any questions, please contact me at (951) 656-7000. Thank you.

Sincerely,



JEFFREY M. SMITH, AICP
Senior Planner

Attachments: Project Location Map
Conceptual Site Plan



SOURCE: RGA; ESRI Imagery

Veteran's Industrial Park 215 . 150801

Figure 2
Conceptual Site Plan



05-009-2016-005

October 04, 2016

[VIA EMAIL TO:smith@marchjpa.com]
March Joint Powers Authority (JPA)
Jeffrey Smith
14205 Meridian Parkway, Suite 140
Riverside, CA 92518

Re: Veterans Industrial Park 215: AB 52 Consultation Letter

Dear Jeffrey Smith,

The Agua Caliente Band of Cahuilla Indians (ACBCI) appreciates your efforts to include the Tribal Historic Preservation Office (THPO) in the Veterans Industrial Park 215 project. The project area is not located within the boundaries of the ACBCI Reservation. However, it is within the Tribe's Traditional Use Area (TUA). A records check of the ACBCI registry indicates this area has not been surveyed for cultural resources. For this reason, the ACBCI THPO requests the following:

- *A copy of the records search with associated survey reports and site records from the information center.

- *A cultural resources inventory of the project area by a qualified archaeologist prior to any development activities in this area.

- *Copies of any cultural resource documentation (report and site records) generated in connection with this project.

- *The presence of an approved Native American Cultural Resource Monitor(s) during any ground disturbing activities (including archaeological testing and surveys). Should buried cultural deposits be encountered, the Monitor may request that destructive construction halt and the Monitor shall notify a Qualified Archaeologist (Secretary of the Interior's Standards and Guidelines) to investigate and, if necessary, prepare a mitigation plan for submission to the State Historic Preservation Officer and the Agua Caliente Tribal Historic Preservation Office.

Again, the Agua Caliente appreciates your interest in our cultural heritage. If you have questions or require additional information, please call me at (760)699-6828. You may also email me at hfeeny@aguacaliente.net.

Cordially,

AGUA CALIENTE BAND OF CAHUILLA INDIANS

TRIBAL HISTORIC PRESERVATION



Hannah Feeney
Archaeological and Archives Technician
Tribal Historic Preservation Office
AGUA CALIENTE BAND
OF CAHUILLA INDIANS

Michael Houlihan

From: Jeff Smith <smith@marchjpa.com>
Sent: Friday, November 4, 2016 12:10 PM
To: Feeney, Hannah (TRBL)
Subject: Veterans Industrial Park 215: AB 52 Letter - Agua Caliente

Good Afternoon Hannah,

Thank you for taking my phone call this morning regarding the AB 52 Consultation process for the Veterans Industrial Park 215 (VIP 215). The call was made in reference to Agua Caliente's Oct 4, 2016 letter (Ref. No.: 05-009-2016-005) to the MJPA.

While the letter did not officially request consultation, the letter requested additional information. As we discussed, I will add Agua Caliente to our VIP 215 distribution list to receive any and all upcoming public notices and circulation of all documents, including EIR's, archaeological and cultural reports, development plans, conceptual grading plans and other documents pertaining to this project. While the Applicant is finalizing its submittal, conceptual site plan and elevations along with a Cultural Assessment Report and Geotech Report can be uploaded from this link:

- <http://jmp.sh/Q19yO3w>

Once the Applicant has finalized their project submittal documentation, I will forward this information to you. In the meantime, if you have any additional questions or need information, please contact me at the email address or number below. Thank you.

Jeffrey M. Smith, AICP
Senior Planner

March Joint Powers Authority
14205 Meridian Parkway, Suite 140 | Riverside, CA | 92518
Phone: (951) 656-7000 Fax: (951) 653-5558
Email: smith@marchjpa.com
Web: www.marchjpa.com

AGUA CALIENTE BAND OF CAHUILLA INDIANS

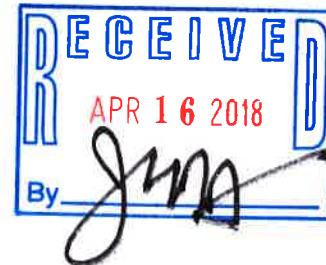
TRIBAL HISTORIC PRESERVATION



05-009-2016-005

April 16, 2018

[VIA EMAIL TO:smith@marchjpa.com]
March Joint Powers Authority (JPA)
Jeffrey Smith
14205 Meridian Parkway, Suite 140
Riverside, CA 92518



Re: AB 52- Veteran Industrial Park 215

Dear Jeffrey Smith,

The Agua Caliente Band of Cahuilla Indians (ACBCI) appreciates your efforts to include the Tribal Historic Preservation Office (THPO) in the Veterans Industrial Park 215 project. We have reviewed the documents and have the following comments:

*At this time the concerns of the ACBCI THPO have been addressed and proper mitigation measures have been proposed to ensure the protection of tribal cultural resources. This letter shall conclude our AB52 consultation efforts.

Again, the Agua Caliente appreciates your interest in our cultural heritage. If you have questions or require additional information, please call me at (760)699-6829. You may also email me at ACBCI-THPO@aguacaliente.net.

Cordially,

Katie Croft

Katie Croft
Cultural Resources Manager
Tribal Historic Preservation Office
AGUA CALIENTE BAND
OF CAHUILLA INDIANS



PECHANGA CULTURAL RESOURCES
Temecula Band of Luiseño Mission Indians

Post Office, Box 2183 • Temecula, CA 92593
Telephone (951) 308-9295 • Fax (951) 506-9491

September 29, 2016

Chairperson:
Neal Ibanez

Vice Chairperson:
Bridgett Barcello

Committee Members:
Mary Bear Magee
Evie Gerber
Darlene Miranda
Richard B. Searce, III
Michael Vasquez

Director:
Gary DuBois

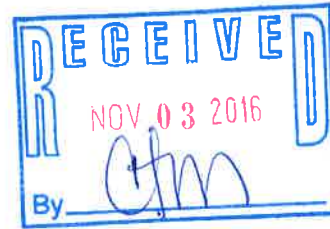
Coordinator:
Paul Macarro

Planning Specialist:
Tuba Ebru Ozdil

Cultural Analyst:
Anna Hoover

VIA E-MAIL and USPS

Jeffery M. Smith
Senior Planner
March Joint Powers Authority
14205 Meridian Parkway, Suite 140
Riverside, CA 92518



Re: Pechanga Tribe Request for Consultation Pursuant to AB 52 for the Veterans Industrial Park 215 (VIP 215)

Dear Mr. Smith;

This letter is written on behalf of the Pechanga Band of Luiseño Indians (hereinafter, “the Tribe” and/or “Payómkawichum”), a federally recognized Indian tribe and sovereign government in response to the AB 52 notice provided by the March Joint Powers Authority dated September 29, 2016 and received in our office September 29, 2016.

This letter serves as the Tribe’s formal request to begin consultation under AB 52 for this Project. Per AB 52, we intend to assist the March Joint Powers Authority in determining the type of environmental document that should be prepared for this Project (i.e. EIR, MND, ND); with identifying potential tribal cultural resources (TCRs); determining whether potential substantial adverse effects will occur to them; and to develop appropriate preservation, avoidance and/or mitigation measures, as appropriate. Preferred TCR mitigation is always avoidance and the Tribe requests that all efforts to preserve sensitive TCRs be made as early in the development process as possible.

Please add the Tribe to your distribution list(s) for public notices and circulation of all documents, including environmental review documents, archaeological reports, development plans, conceptual grading plans (if available), and all other applicable documents pertaining to this Project. The Tribe further requests to be directly notified of all public hearings and scheduled approvals concerning this Project, and that these comments be incorporated into the record of approval for this Project.

The Pechanga Tribe asserts that the Project area is part of Payómkawichum (Luiseño), and therefore the Tribe’s, aboriginal territory as evidenced by the existence of Payómkawichum

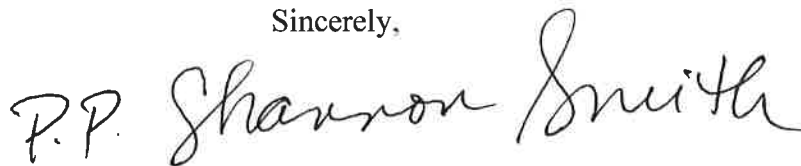
cultural resources, named places, *tóota yixélval* (rock art, pictographs, petroglyphs), and an extensive Payómkawichum artifact record in the vicinity of the Project. This culturally sensitive area is affiliated with the Pechanga Band of Luiseño Indians because of the Tribe's cultural ties to this area as well as our extensive history with the March Joint Powers Authority and other projects within the area. During our consultation we will provide more specific, confidential information on potential TCRs that may be impacted by the proposed Project.

As you know, the AB 52 consultation process is ongoing and continues until appropriate mitigation has been agreed upon for the TCRs that may be impacted by the Project. As such, under both AB 52 and CEQA, we look forward to working closely with the March Joint Powers Authority on ensuring that a full, comprehensive environmental review of the Project's impacts is completed, including addressing the culturally appropriate and respectful treatment of human remains and inadvertent discoveries.

In addition to those rights granted to the Tribe under AB 52, the Tribe reserves the right to fully participate in the environmental review process, as well as to provide further comment on the Project's impacts to cultural resources and potential mitigation for such impacts.

The Pechanga Tribe looks forward to working together with the March Joint Powers Authority in protecting the invaluable Pechanga cultural resources found in the Project area. The formal contact person for this Project will be Ebru Ozdil. Please contact her at 951-770-8113 or at eozydil@pechanga-nsn.gov within 30 days of receiving these comments so that we can begin the consultation process. Thank you.

Sincerely,

A handwritten signature in black ink that reads "P.P. Shannon Smith". The signature is written in a cursive, flowing style.

Ebru Ozdil
Planning Specialist

Cc Pechanga Office of the General Counsel

Michael Houlihan

From: Jeff Smith <smith@marchjpa.com>
Sent: Friday, November 4, 2016 11:46 AM
To: Ebru Ozdil
Subject: Veterans Industrial Park 215: AB 52 Consultation

Good Morning Ebru,

Thank you for taking my phone call this morning as the start of the AB 52 Consultation process for the Veterans Industrial Park 215 (VIP 215).

As we discussed, I will add Pechanga to our VIP 215 distribution list to receive any and all upcoming public notices and circulation of all documents, including EIR's, archaeological and cultural reports, development plans, conceptual grading plans and other documents pertaining to this project. While the Applicant is finalizing its submittal, at your request, conceptual site plan and elevations along with a Cultural Assessment Report and Geotech Report can be uploaded from this link:

- <http://jmp.sh/Q19yO3w>

Once the Applicant has finalized their project submittal documentation, I will forward this information to you. In the meantime, if you have any additional questions or need information, please contact me at the email address or number below. Thank you and we look forward to this consultation process.

Jeffrey M. Smith, AICP
Senior Planner

March Joint Powers Authority
14205 Meridian Parkway, Suite 140 | Riverside, CA | 92518
Phone: (951) 656-7000 Fax: (951) 653-5558
Email: smith@marchjpa.com
Web: www.marchjpa.com

July 23, 2018

Attn: Jeffrey M. Smith, AICP
Senior Planner
March Joint Powers Authority
14205 Meridian Parkway, Suite 140
Riverside, CA 92518



RE: AB 52 Consultation; Veterans Industrial Park (VIP) 215 Project

The Soboba Band of Luiseño Indians has received your notification pursuant under Assembly Bill 52.

Soboba Band of Luiseño Indians is requesting to initiate formal consultation with the March Joint Powers Authority. A meeting can be scheduled by contacting me via email or phone. All contact information has been included in this letter.

I look forward to hearing from and meeting with you soon.

Sincerely,

A handwritten signature in black ink, appearing to read "Joe", with a long horizontal line extending to the right.

Joseph Ontiveros, Tribal Historic Preservation Officer
Soboba Band of Luiseño Indians
P.O. Box 487
San Jacinto, CA 92581
Phone (951) 654-5544 ext. 4137
Cell (951) 663-5279
jontiveros@soboba-nsn.gov

Confidentiality: The entirety of the contents of this letter shall remain confidential between Soboba and the County of Riverside. No part of the contents of this letter may be shared, copied, or utilized in any way with any other individual, entity, municipality, or tribe, whatsoever, without the expressed written permission of the Soboba Band of Luiseño Indians.

July 2, 2015

452nd AMW Public Affairs
895 Baucom Avenue SE, Building 317
March ARB, CA 92518



Re: Revised Letter for California Environmental Quality Act Public Resources Code section 21080.3, subd. (b) ; California Assembly Bill 52, Request for Formal Notification of Proposed Projects within the geographic area that is traditionally and culturally affiliated with the Soboba Band of Luiseño Indians.

The purpose of this letter is to request formal notification of proposed projects within the geographic area that is traditionally and culturally affiliated with the Soboba Band of Luiseño Indians, in accordance with Public Resources Code Section 21080.3.1, subd. (b). As of the date of this letter, you have been formally notified that the boundaries of your local government's jurisdiction fall within the area that is traditionally and culturally affiliated with the Soboba Band of Luiseño Indians. Attached to this letter you will find a traditional use area map that can be used for reference. Due to dual ancestry here at Soboba, which includes both Cahuilla and Luiseño descendants, you will find that our traditional use area map depicts an area that encompasses both territories. Additionally, the Soboba Band has created the following specific requests and formal procedures in accordance with California Assembly Bill 52:

- Formal notice of and information on proposed projects for which your agency will serve as a lead agency under the California Environmental Quality Act (CEQA), Public Resources Code section 21000 et seq. Pursuant to Public Resources Code section 21080.3.1, subd. (b) shall be sent to The Soboba Band
- Within 14 days of determining that an application for a project is complete or of a decision by your agency to undertake a project, a lead agency must provide formal notification to Cultural Resource Director, Joseph Ontiveros, who is the designated contact and tribal representative for the traditionally and culturally affiliated Soboba Band of Luiseño Indians regarding notifications pertaining to California Assembly Bill 52

Contact Information:

*Joseph Ontiveros
Cultural Resource Director
Soboba Band of Luiseno Indians
PO BOX 487
San Jacinto, Ca 92581
O: 951-654-5544 x 4137
C: 951-663-5279
jontiveros@soboba-nsn.gov*

- We request that all notices be sent via certified U.S. Mail with return receipt.

- This notice shall consist of a formal written letter that includes:
 - A description of the proposed project
 - The project's location
 - The lead agency contact information
 - A clear and definitive statement that the tribe has 30 day to request consultation
- Once the Soboba Band has received the notification, we will respond within 30 days as to whether we wish to initiate consultation as prescribed by Public Resources Code section 21080.3.1, subd. (d), the Soboba Band may request consultation, as defined by Public Resources Code section 21080.3.1, subd. (b), pursuant to Public Resources Code section 21080.3.2 to mitigate any project impacts a specific project may cause to tribal cultural resources.
- The lead agency shall begin the consultation process within 30 days of receiving the Soboba Band's request for consultation and prior to the release of a negative declaration, mitigated negative declaration, or environmental impact statement.
- Once a review of inadvertent discoveries has been completed by the Cultural Resource Director, all information will then be transferred to the Soboba Tribal Council for a final decision and directive.
- In the event that human remains are uncovered, all work in the immediate vicinity will halt and standard procedures will be followed as set forth by law.

On behalf of The Soboba Band of Luiseño Indians, we appreciate your careful considerations and willingness to effectively carry out all requirements associated with AB 52. If you have any further questions or require any clarification, please feel free to contact me at your earliest convenience.

Sincerely,



Joseph Ontiveros
Cultural Resource Director
Soboba Band of Luiseño Indians
P.O. Box 487
San Jacinto, CA 92581
Phone (951) 654-5544 ext. 4137
Cell (951) 663-5279
jontiveros@soboba-nsn.gov

Jeff Smith

From: Joseph Ontiveros <jontiveros@soboba-nsn.gov>
Sent: Monday, July 23, 2018 3:42 PM
To: Jeff Smith
Cc: Mathew Evans; Jessica Valdez
Subject: RE: VIP 215 - SB 18 Consultation
Attachments: AB52_MarchJPA_Veterans Industrial Park (VIP) 215 Project.pdf; March_AB52_Request.pdf; Soboba Traditional Use Area Map.pdf

Jeff,

Thank you for taking my call earlier today. Attached you will find Soboba's formal request for consultation under AB52, along with our initial AB52 notification request letter sent in 2015. Please get back to me with some proposed dates and times so that we may schedule a consultation meeting sooner rather than later.

Sincerely,

Joseph Ontiveros

Tribal Historic Preservation Officer

Soboba Band of Luiseno Indians

P.O Box 487

San Jacinto, Ca 92581

P (951) 654-2765 ext.4137

C (951) 663-5279



CONFIDENTIALITY NOTICE: This e-mail transmission, and any documents, files or previous e-mail messages attached to it may contain confidential information that is also legally privileged. If you are not the intended recipient, or a person responsible for delivering it to the intended recipient, you are hereby notified that any disclosure, copying, distribution or use of any of the information contained in or attached to this transmission is STRICTLY PROHIBITED. If you have received this transmission in error, please immediately notify the sender and immediately destroy the original transmission and its attachments without reading or saving in any manner. Thank you.

From: Jeff Smith <smith@marchjpa.com>
Sent: Monday, July 23, 2018 2:54 PM
To: Joseph Ontiveros <jontiveros@soboba-nsn.gov>