

Photo Location #16



Existing Conditions

Viewpoint Details

Viewpoint elevation = 7,716'

Photograph taken by Grant Kaye using a Canon EOS 5D Mark III camera on 04/01/2016 at 11:40 am, with a 42mm focal length to emulate the human eye.

Prepared By:

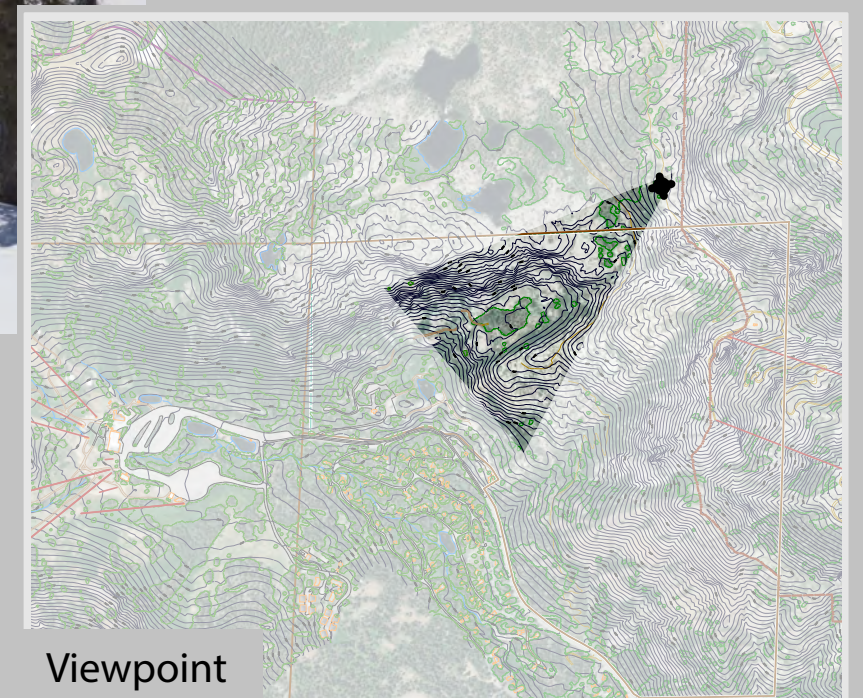


September 2018

VIEW 16 SQUAW SADDLE EXISTING CONDITIONS

B2B GONDOLA EIS

FIGURE D-16a



Viewpoint



Alternative 2

Viewpoint Details

Viewpoint elevation = 7,716'

Photograph taken by Grant Kaye using a Canon EOS 5D Mark III camera on 04/01/2016 at 11:40 am, with a 42mm focal length to emulate the human eye.

Prepared By:



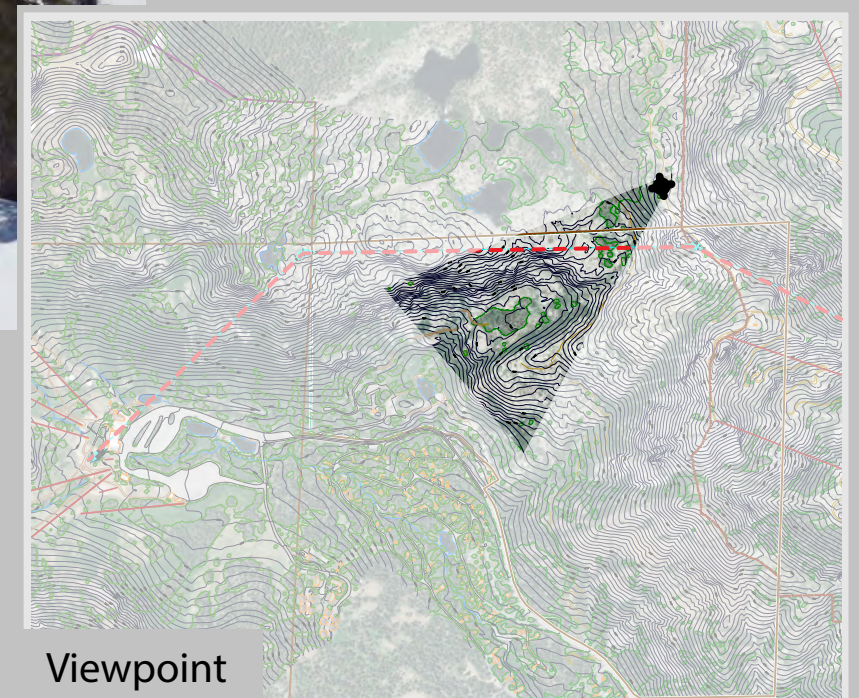
September 2018



VIEW 16
SQUAW SADDLE
ALTERNATIVE 2
SIMULATED CONDITIONS

B2B GONDOLA EIS

FIGURE D-16b



Viewpoint



Alternative 3

Viewpoint Details

Viewpoint elevation = 7,716'

Photograph taken by Grant Kaye using a Canon EOS 5D Mark III camera on 04/01/2016 at 11:40 am, with a 42mm focal length to emulate the human eye.

Prepared By:



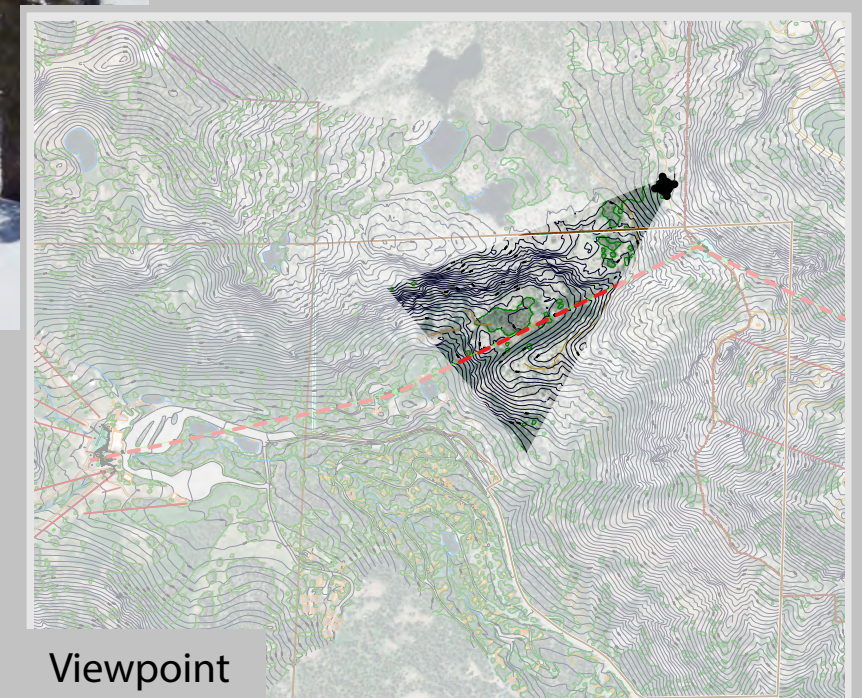
September 2018



**VIEW 16
SQUAW SADDLE
ALTERNATIVE 3
SIMULATED CONDITIONS**

B2B GONDOLA EIS

FIGURE D-16c



Viewpoint



Alternative 4

Viewpoint Details

Viewpoint elevation = 7,716'

Photograph taken by Grant Kaye using a Canon EOS 5D Mark III camera on 04/01/2016 at 11:40 am, with a 42mm focal length to emulate the human eye.

Prepared By:

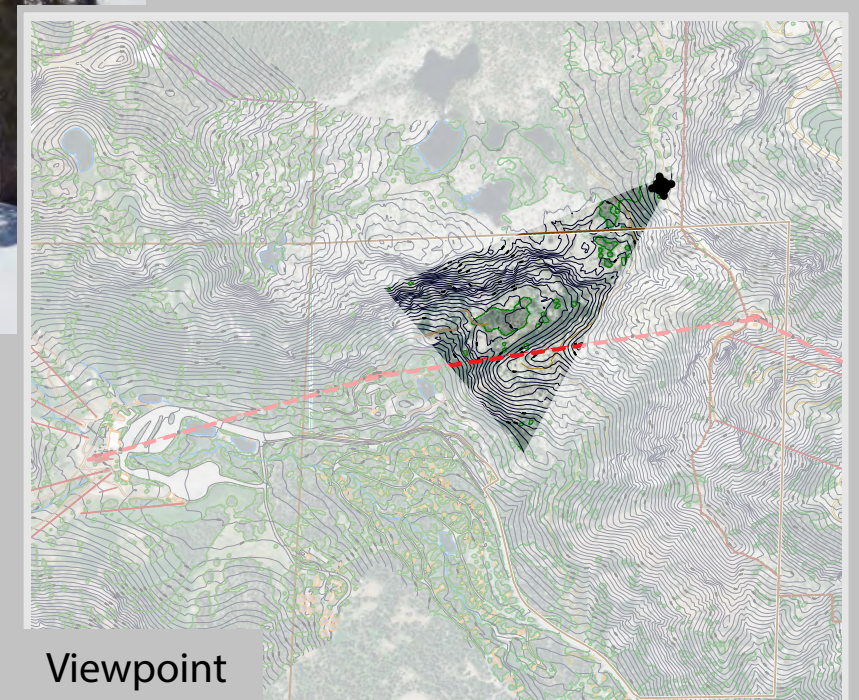


September 2018

VIEW 16
SQUAW SADDLE
ALTERNATIVE 4
SIMULATED CONDITIONS

B2B GONDOLA EIS

FIGURE D-16d



Viewpoint

Photo Location #17



VIEW 17
SQUAW VALLEY ROAD
EXISTING CONDITIONS

B2B GONDOLA EIS

FIGURE D-17a

Existing Conditions

Viewpoint Details

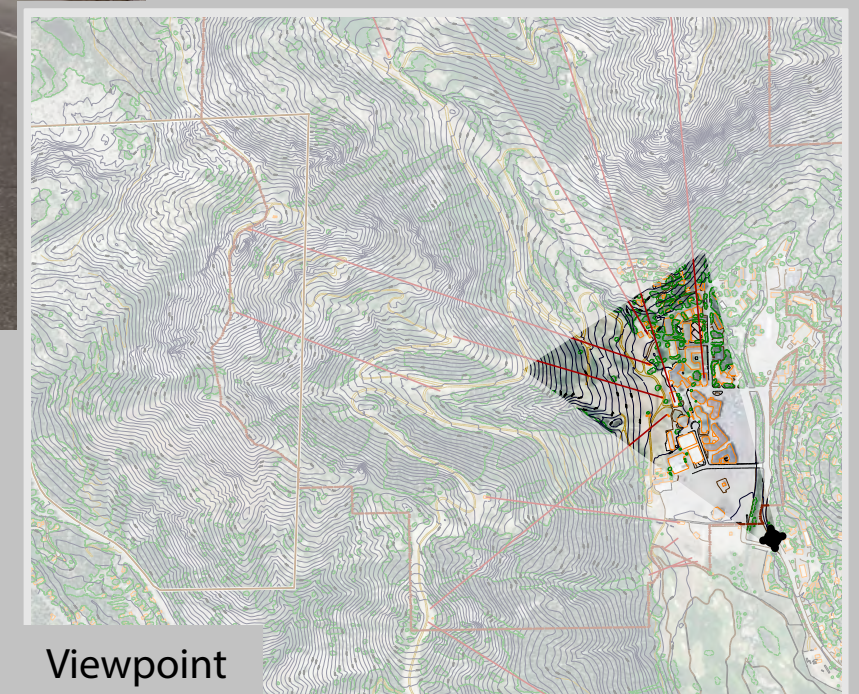
Viewpoint elevation = 6,216'

Photograph taken by Grant Kaye using a Canon EOS 5D Mark III camera on 03/30/2016 at 10:58 am, with a 42mm focal length to emulate the human eye.

Prepared By:

 **SE GROUP**

September 2018



Viewpoint



Alternative 2

Viewpoint Details

Viewpoint elevation = 6,216'

Photograph taken by Grant Kaye using a Canon EOS 5D Mark III camera on 03/30/2016 at 10:58 am, with a 42mm focal length to emulate the human eye.

Prepared By:



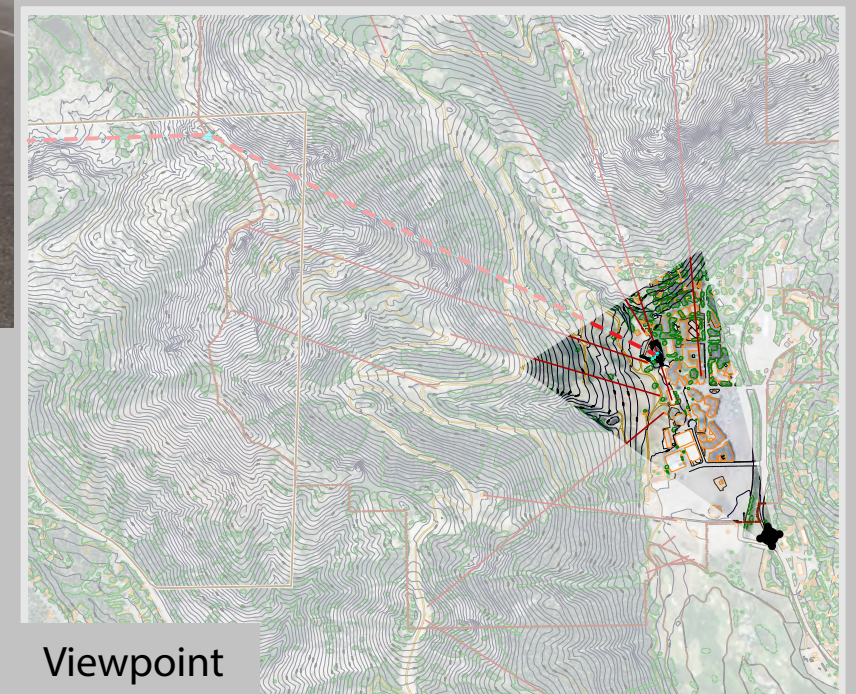
September 2018



VIEW 17
SQUAW VALLEY ROAD
ALTERNATIVE 2
SIMULATED CONDITIONS

B2B GONDOLA EIS

FIGURE D-17b





Alternative 3

Viewpoint Details

Viewpoint elevation = 6,216'

Photograph taken by Grant Kaye using a Canon EOS 5D Mark III camera on 03/30/2016 at 10:58 am, with a 42mm focal length to emulate the human eye.

Prepared By:



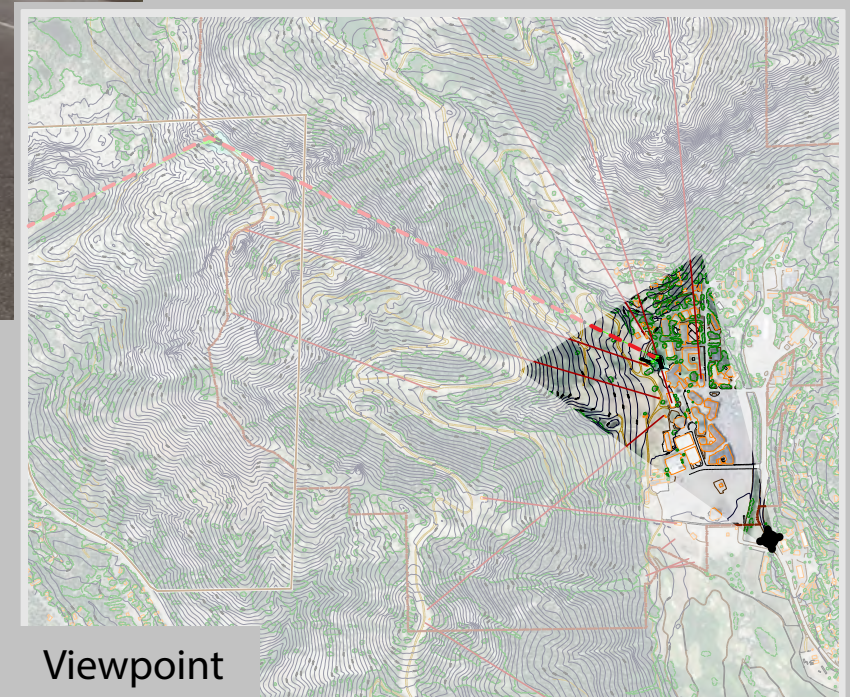
September 2018



VIEW 17
SQUAW VALLEY ROAD
ALTERNATIVE 3
SIMULATED CONDITIONS

B2B GONDOLA EIS

FIGURE D-17c



Viewpoint



Alternative 4

Viewpoint Details

Viewpoint elevation = 6,216'

Photograph taken by Grant Kaye using a Canon EOS 5D Mark III camera on 03/30/2016 at 10:58 am, with a 42mm focal length to emulate the human eye.

Prepared By:



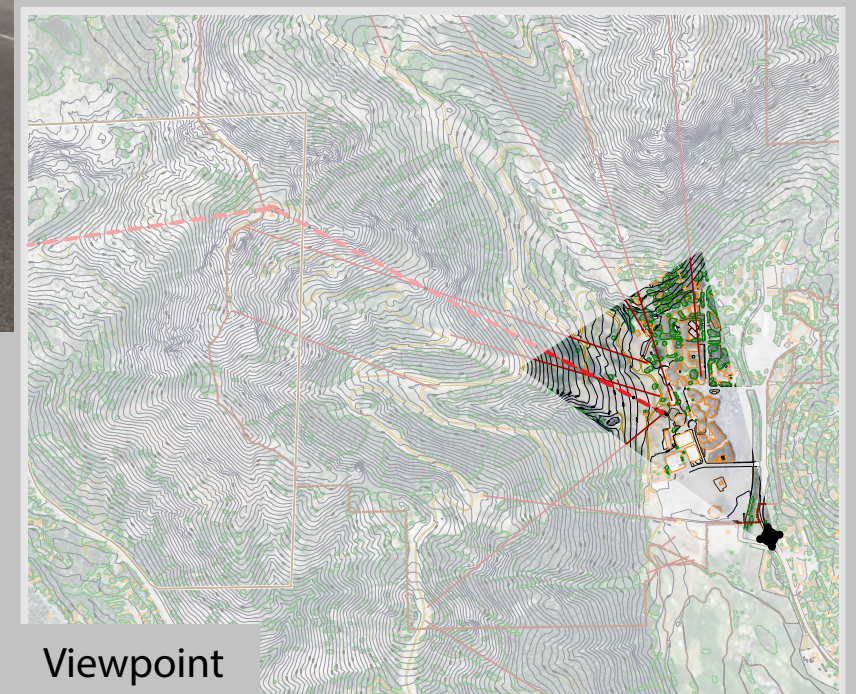
September 2018



VIEW 17
SQUAW VALLEY ROAD
ALTERNATIVE 4
SIMULATED CONDITIONS

B2B GONDOLA EIS

FIGURE D-17d



Viewpoint

Photo Location #18



Existing Conditions

Viewpoint Details

Viewpoint elevation = 6,216'

Photograph taken by Grant Kaye using a Canon EOS 5D Mark III camera on 09/22/2015 at 11:56 am, with a 42mm focal length to emulate the human eye.

Prepared By:



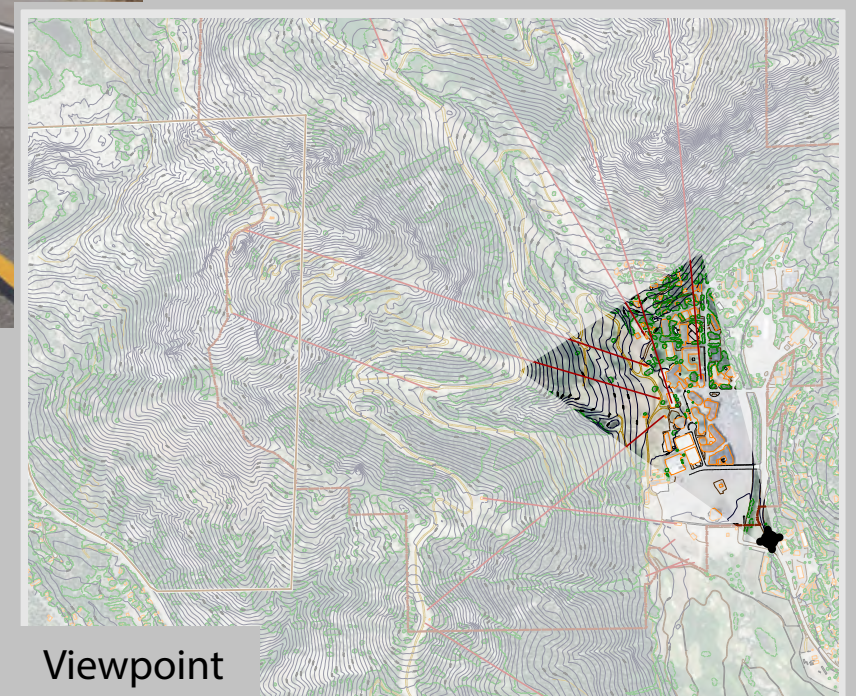
September 2018



**VIEW 18
SQUAW VALLEY ROAD
EXISTING CONDITIONS**

B2B GONDOLA EIS

FIGURE D-18a



Viewpoint



Alternative 2

Viewpoint Details

Viewpoint elevation = 6,216'

Photograph taken by Grant Kaye using a Canon EOS 5D Mark III camera on 09/22/2015 at 11:56 am, with a 42mm focal length to emulate the human eye.

Prepared By:



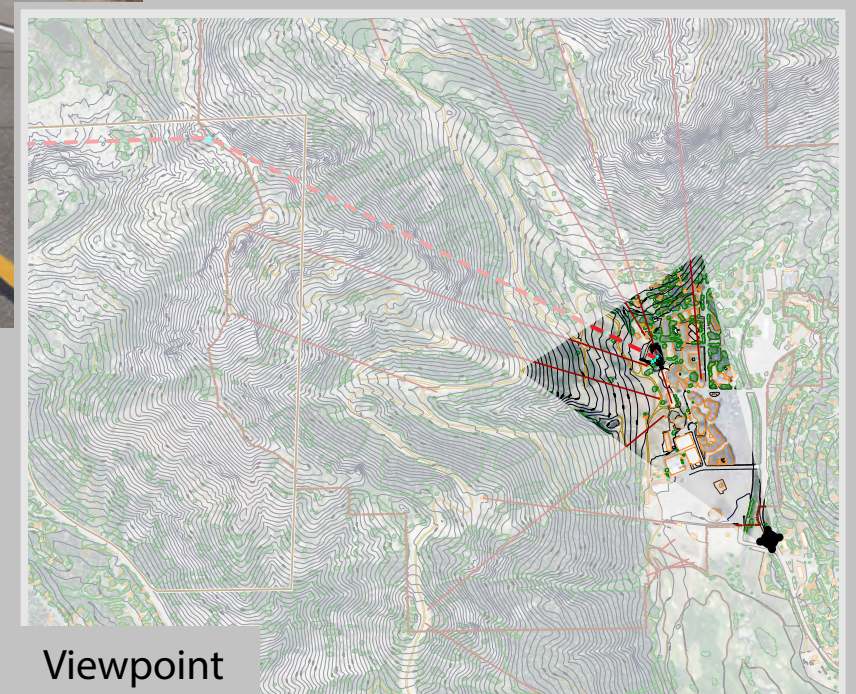
September 2018



VIEW 18
SQUAW VALLEY ROAD
ALTERNATIVE 2
SIMULATED CONDITIONS

B2B GONDOLA EIS

FIGURE D-18b



Viewpoint



Alternative 3

Viewpoint Details

Viewpoint elevation = 6,216'

Photograph taken by Grant Kaye using a Canon EOS 5D Mark III camera on 09/22/2015 at 11:56 am, with a 42mm focal length to emulate the human eye.

Prepared By:

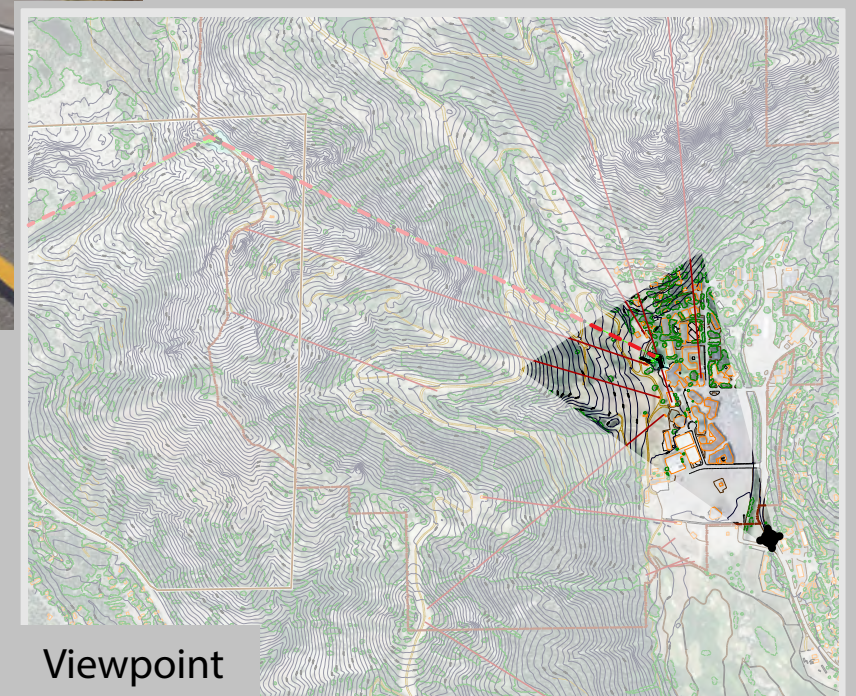


September 2018

VIEW 18
SQUAW VALLEY ROAD
ALTERNATIVE 3
SIMULATED CONDITIONS

B2B GONDOLA EIS

FIGURE D-18c



Viewpoint



Alternative 4

Viewpoint Details

Viewpoint elevation = 6,216'

Photograph taken by Grant Kaye using a Canon EOS 5D Mark III camera on 09/22/2015 at 11:56 am, with a 42mm focal length to emulate the human eye.

Prepared By:



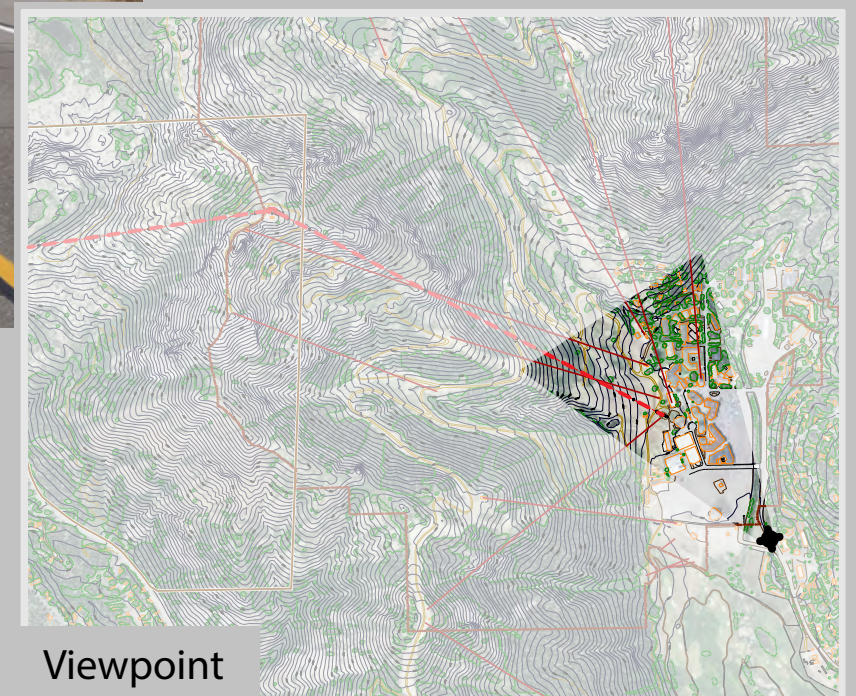
September 2018



VIEW 18
SQUAW VALLEY ROAD
ALTERNATIVE 4
SIMULATED CONDITIONS

B2B GONDOLA EIS

FIGURE D-18d



Viewpoint

Photo Location #19



Existing Conditions

Viewpoint Details

Viewpoint elevation = 6,221'

Photograph taken by Grant Kaye using a Canon EOS 5D Mark III camera on 03/30/2016 at 11:02 am, with a 42mm focal length to emulate the human eye.

Prepared By:

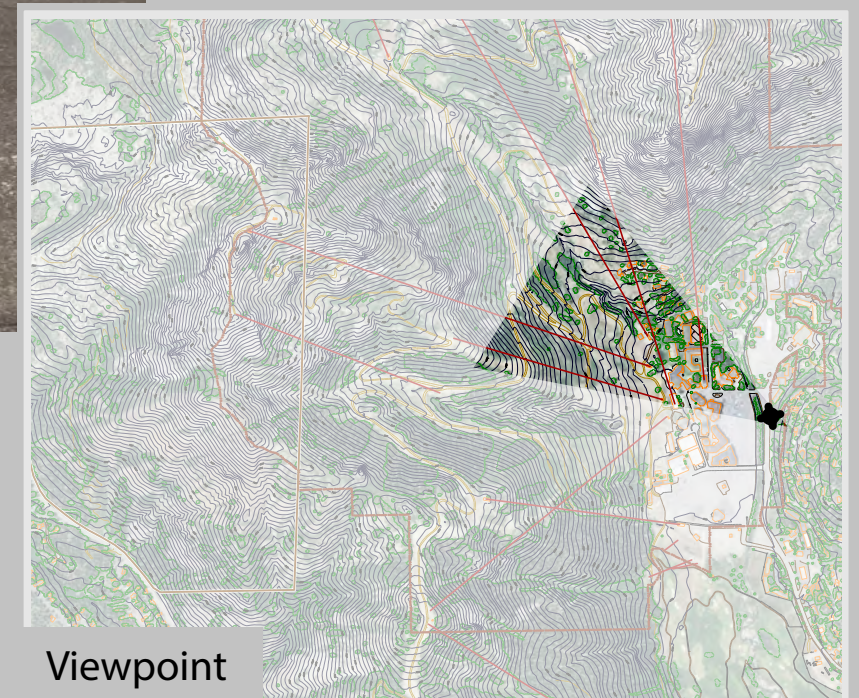


September 2018

VIEW 19
SQUAW VALLEY ROAD
EXISTING CONDITIONS

B2B GONDOLA EIS

FIGURE D-19a



Viewpoint



VIEW 19
SQUAW VALLEY ROAD
ALTERNATIVE 2
SIMULATED CONDITIONS

B2B GONDOLA EIS

FIGURE D-19b

Alternative 2

Viewpoint Details

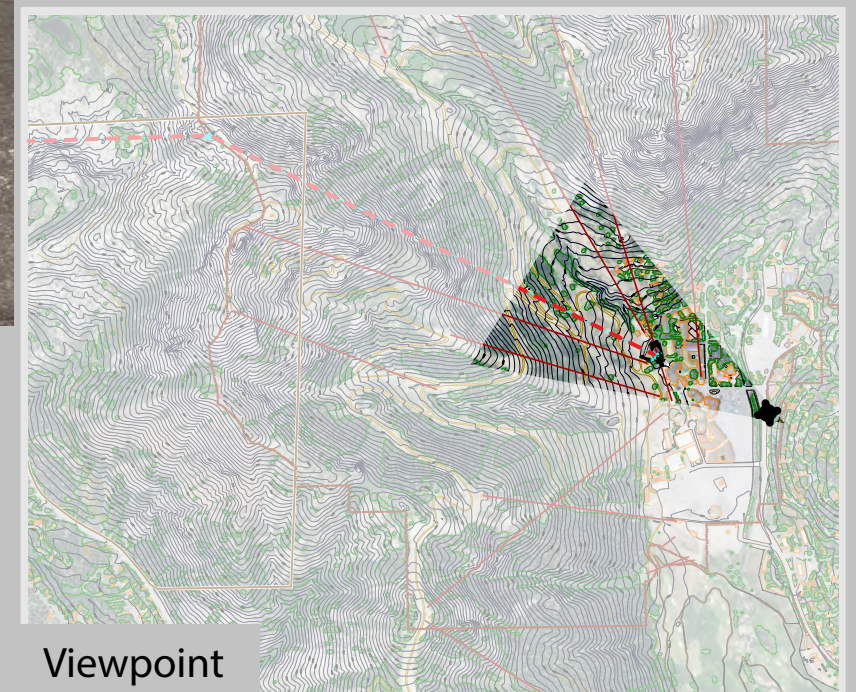
Viewpoint elevation = 6,221'

*Photograph taken by Grant Kaye using a Canon EOS 5D Mark III camera on
03/30/2016 at 11:02 am, with a 42mm focal length to emulate the human eye.*

Prepared By:

 **SE GROUP**

September 2018



Viewpoint



VIEW 19
SQUAW VALLEY ROAD
ALTERNATIVE 3
SIMULATED CONDITIONS

B2B GONDOLA EIS

FIGURE D-19c

Alternative 3

Viewpoint Details

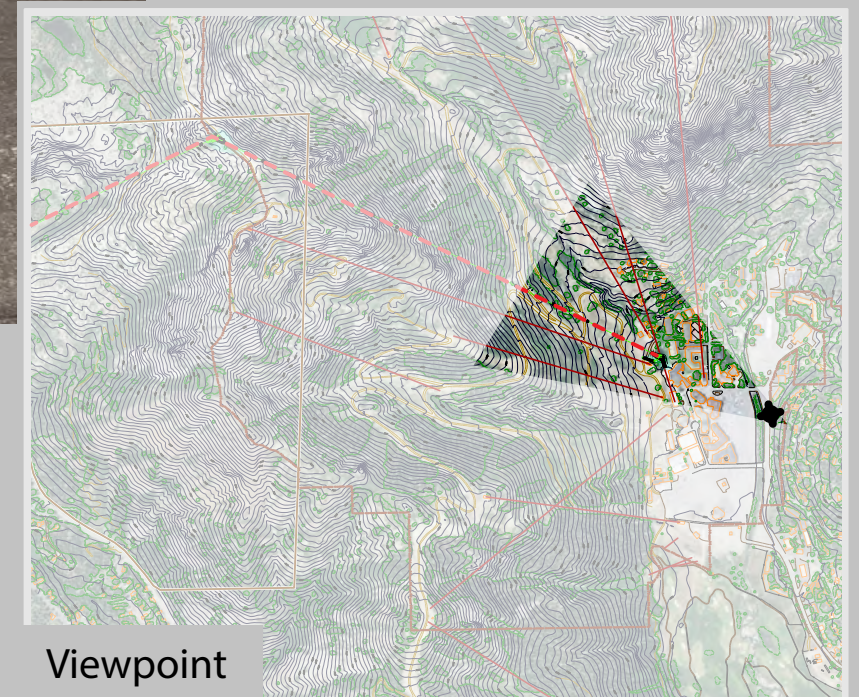
Viewpoint elevation = 6,221'

*Photograph taken by Grant Kaye using a Canon EOS 5D Mark III camera on
03/30/2016 at 11:02 am, with a 42mm focal length to emulate the human eye.*

Prepared By:



September 2018



Viewpoint



Alternative 4

Viewpoint Details

Viewpoint elevation = 6,221'

Photograph taken by Grant Kaye using a Canon EOS 5D Mark III camera on 03/30/2016 at 11:02 am, with a 42mm focal length to emulate the human eye.

Prepared By:



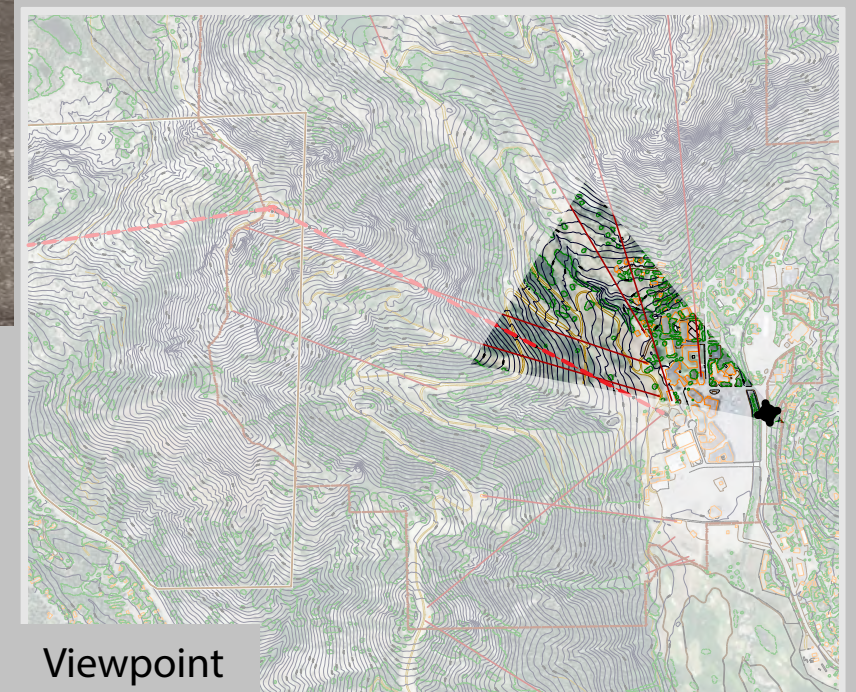
September 2018



VIEW 19
SQUAW VALLEY ROAD
ALTERNATIVE 4
SIMULATED CONDITIONS

B2B GONDOLA EIS

FIGURE D-19d



Viewpoint

Photo Location #20

VIEW 20 SQUAW VALLEY ROAD EXISTING CONDITIONS

B2B GONDOLA EIS

FIGURE D-20a



Existing Conditions

Viewpoint Details

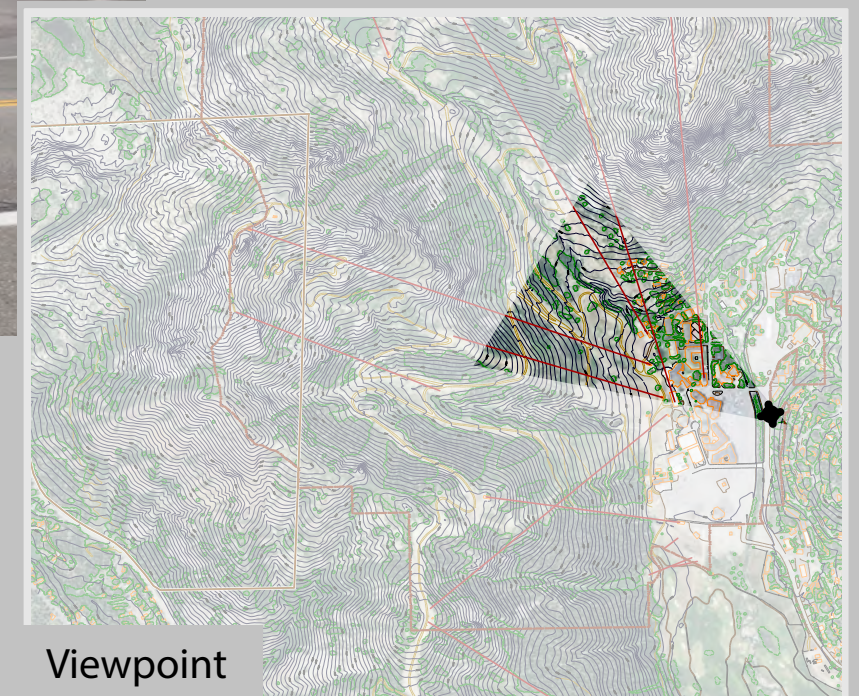
Viewpoint elevation = 6,221'

Photograph taken by Grant Kaye using a Canon EOS 5D Mark III camera on 09/22/2015 at 12:01 pm, with a 42mm focal length to emulate the human eye.

Prepared By:

 **SE GROUP**

September 2018



Viewpoint



VIEW 20
SQUAW VALLEY ROAD
ALTERNATIVE 2
SIMULATED CONDITIONS

B2B GONDOLA EIS

FIGURE D-20b

Alternative 2

Viewpoint Details

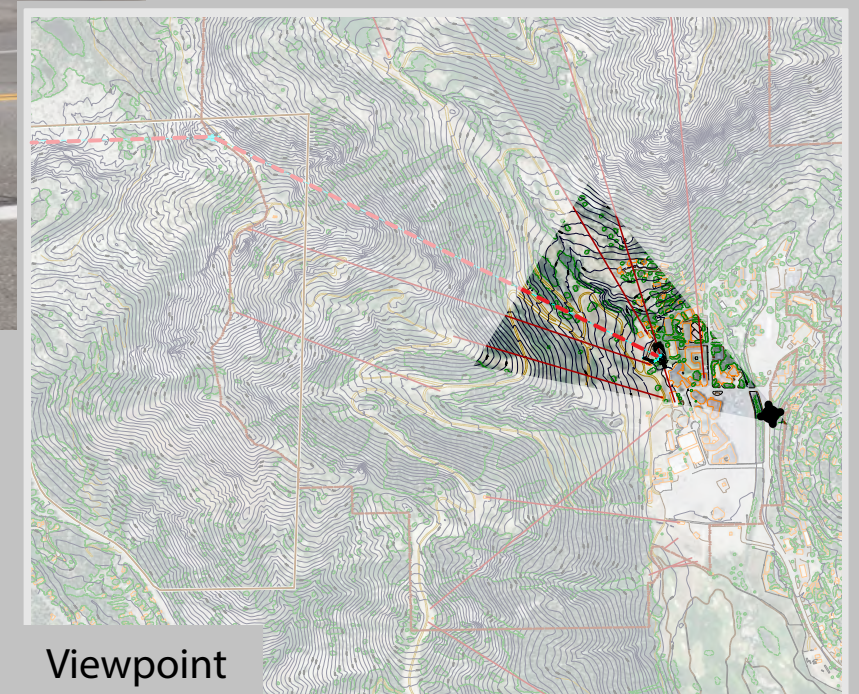
Viewpoint elevation = 6,221'

*Photograph taken by Grant Kaye using a Canon EOS 5D Mark III camera on
09/22/2015 at 12:01 pm, with a 42mm focal length to emulate the human eye.*

Prepared By:



September 2018



Viewpoint



Alternative 3

Viewpoint Details

Viewpoint elevation = 6,221'

Photograph taken by Grant Kaye using a Canon EOS 5D Mark III camera on 09/22/2015 at 12:01 pm, with a 42mm focal length to emulate the human eye.

Prepared By:



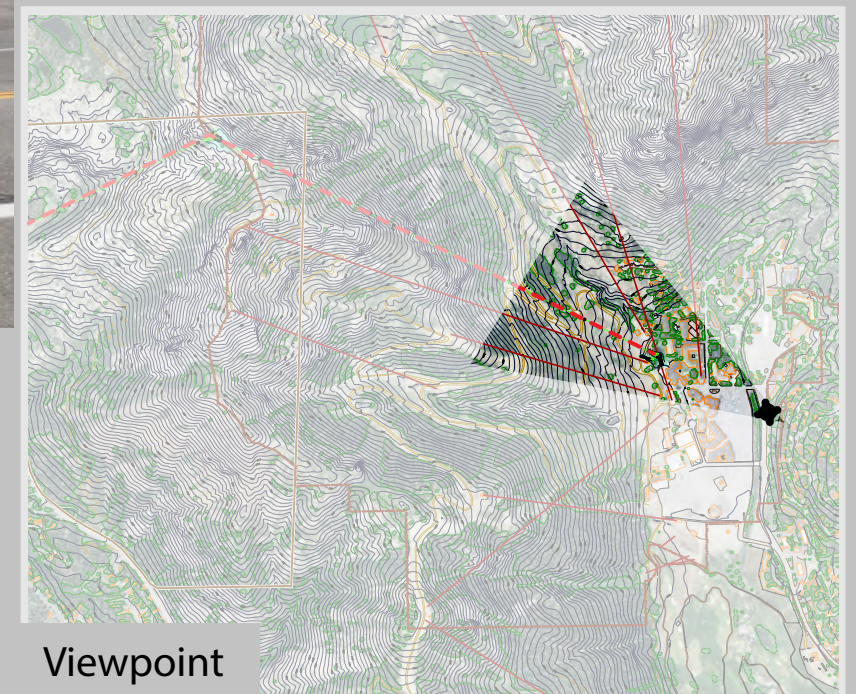
September 2018



VIEW 20
SQUAW VALLEY ROAD
ALTERNATIVE 3
SIMULATED CONDITIONS

B2B GONDOLA EIS

FIGURE D-20c



Viewpoint



Alternative 4

Viewpoint Details

Viewpoint elevation = 6,221'

Photograph taken by Grant Kaye using a Canon EOS 5D Mark III camera on 09/22/2015 at 12:01 pm, with a 42mm focal length to emulate the human eye.

Prepared By:



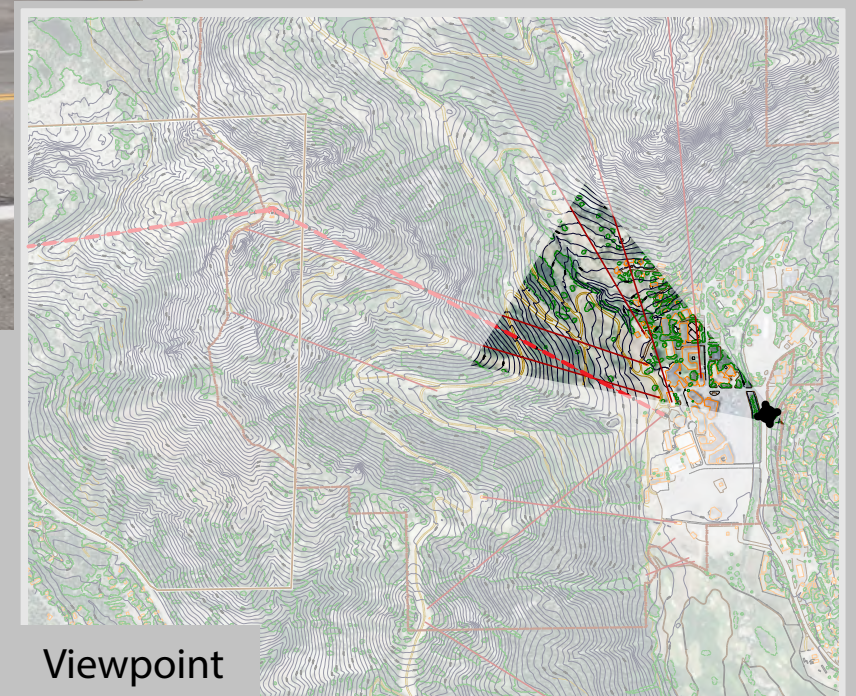
September 2018



VIEW 20
SQUAW VALLEY ROAD
ALTERNATIVE 4
SIMULATED CONDITIONS

B2B GONDOLA EIS

FIGURE D-20d



Viewpoint

Photo Location #21



Existing Conditions

Viewpoint Details

Viewpoint elevation = 6,240'

Photograph taken by Grant Kaye using a Canon EOS 5D Mark III camera on 08/17/2017 at 12:22 pm, with a 42mm focal length to emulate the human eye.

Prepared By:

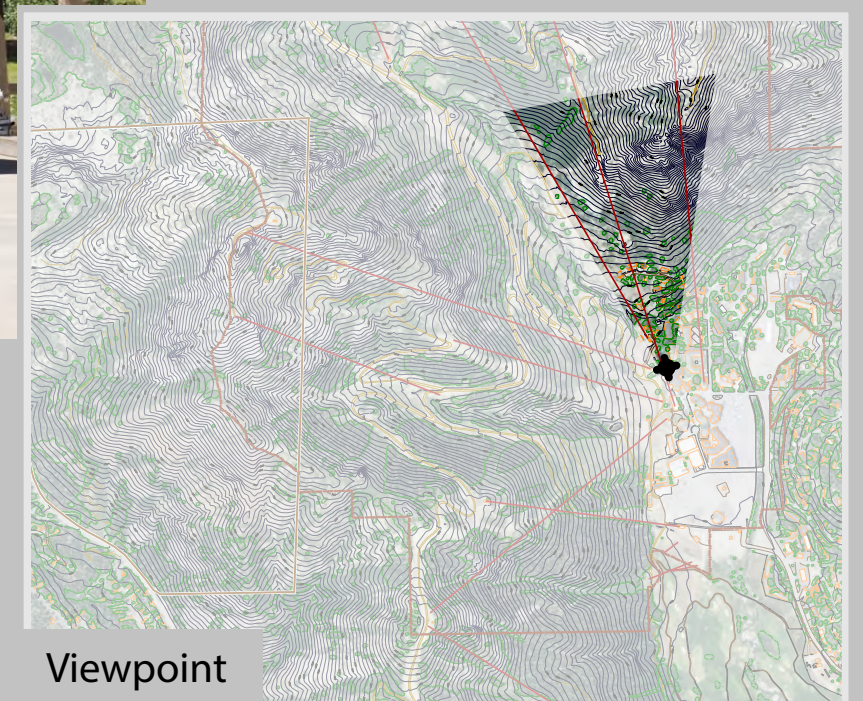


September 2018

VIEW 21 KT SUNDECK/CONDO AREA EXISTING CONDITIONS

B2B GONDOLA EIS

FIGURE D-21a



Viewpoint



Alternative 2

Viewpoint Details

Viewpoint elevation = 6,240'

Photograph taken by Grant Kaye using a Canon EOS 5D Mark III camera on 08/17/2017 at 12:22 pm, with a 42mm focal length to emulate the human eye.

Prepared By:

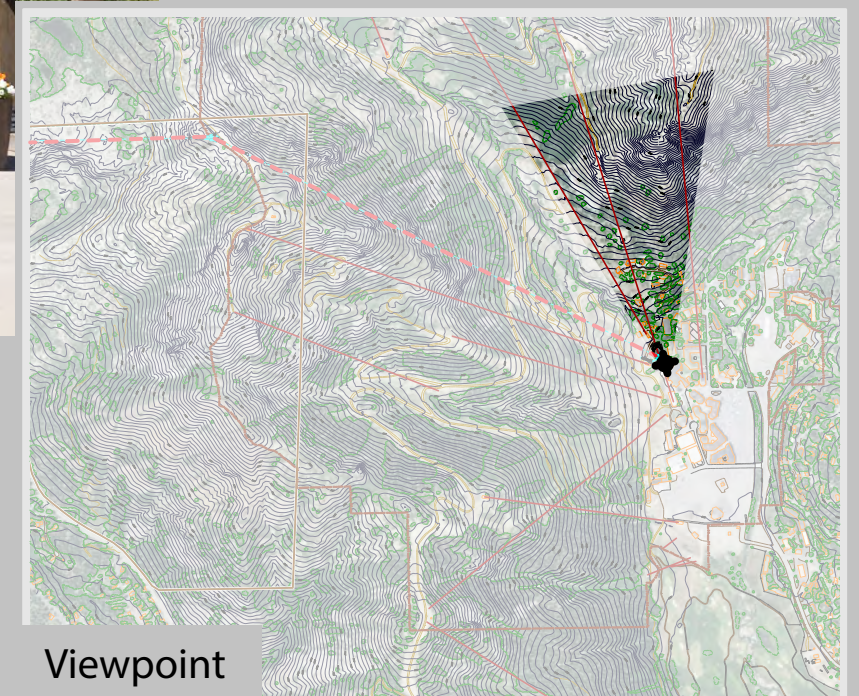


September 2018

VIEW 21 KT SUNDECK/CONDO AREA ALTERNATIVE 2 SIMULATED CONDITIONS

B2B GONDOLA EIS

FIGURE D-21b



Viewpoint



Alternative 3

Viewpoint Details

Viewpoint elevation = 6,240'

Photograph taken by Grant Kaye using a Canon EOS 5D Mark III camera on 08/17/2017 at 12:22 pm, with a 42mm focal length to emulate the human eye.

Prepared By:

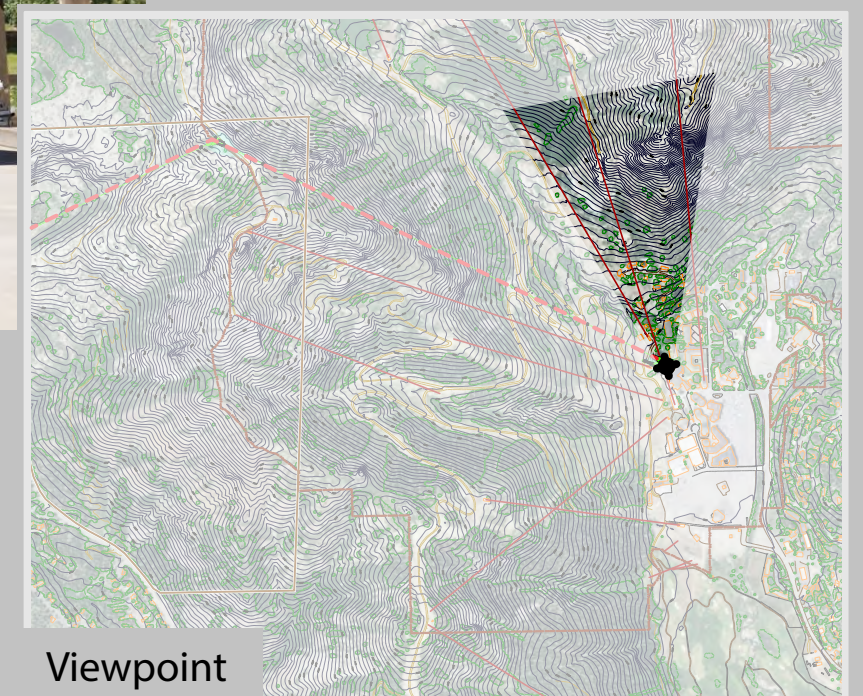


September 2018

VIEW 21 KT SUNDECK/CONDO AREA ALTERNATIVE 3 SIMULATED CONDITIONS

B2B GONDOLA EIS

FIGURE D-21c



Viewpoint



Alternative 4

Viewpoint Details

Viewpoint elevation = 6,240'

Photograph taken by Grant Kaye using a Canon EOS 5D Mark III camera on 08/17/2017 at 12:22 pm, with a 42mm focal length to emulate the human eye.

Prepared By:

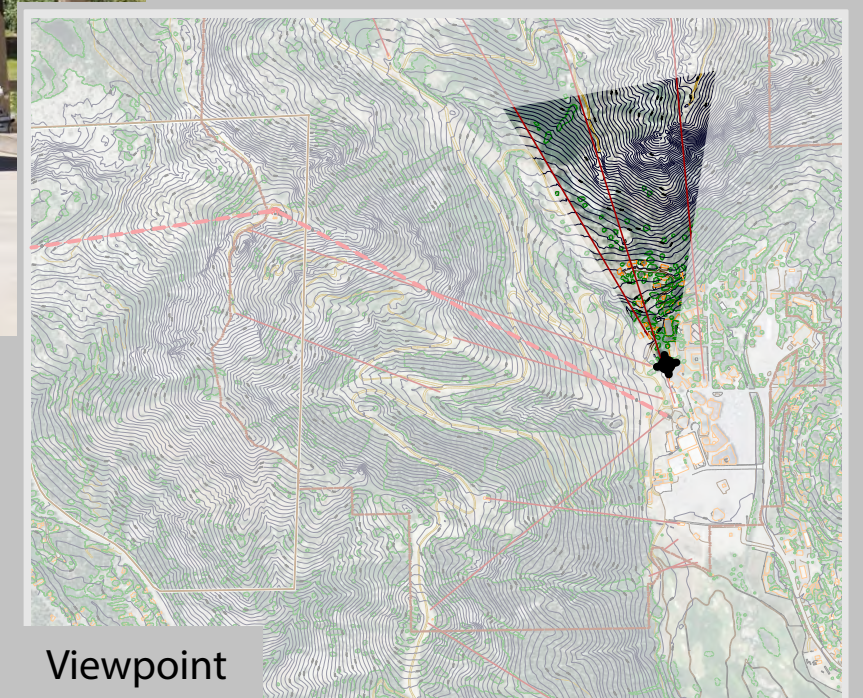


September 2018

VIEW 21 KT SUNDECK/CONDO AREA ALTERNATIVE 4 SIMULATED CONDITIONS

B2B GONDOLA EIS

FIGURE D-21d



Viewpoint