



**Photo Location #11**





Existing Conditions

Viewpoint Details

Viewpoint elevation = 7,163'

Photograph taken by Grant Kaye using a Canon EOS 5D Mark III camera on 08/17/2017 AT 11:16 am, with a 42mm focal length to emulate the human eye.

Prepared By:

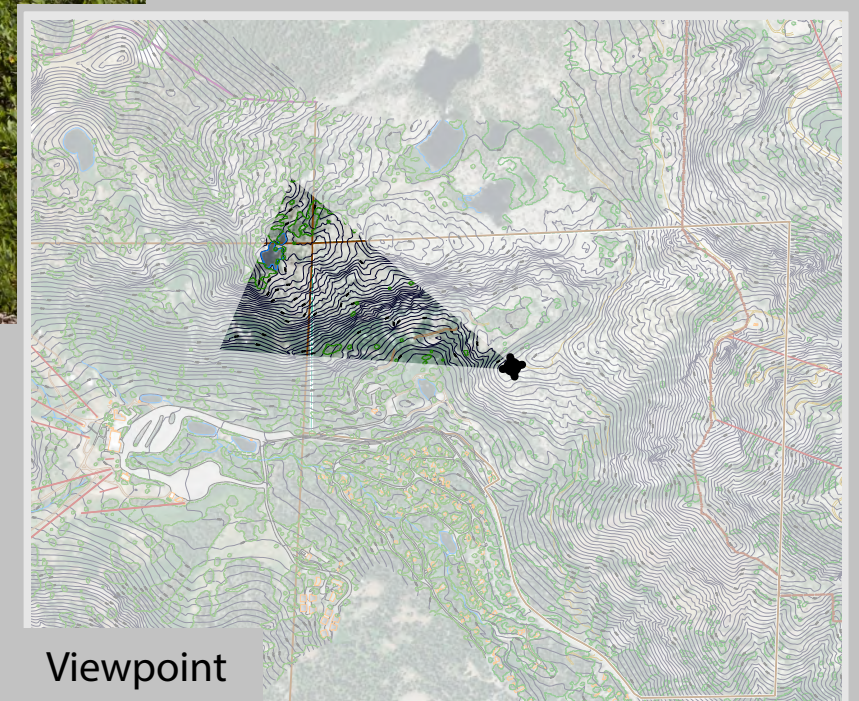


September 2018

**VIEW 11**  
**FIVE LAKES TRAIL**  
**WATER BREAK HILL**  
**EXISTING CONDITIONS**

B2B GONDOLA EIS

FIGURE D-11a



Viewpoint





Alternative 2

*Viewpoint Details*

*Viewpoint elevation = 7,163'*

*Photograph taken by Grant Kaye using a Canon EOS 5D Mark III camera on 08/17/2017 at 11:16 am, with a 42mm focal length to emulate the human eye.*

Prepared By:



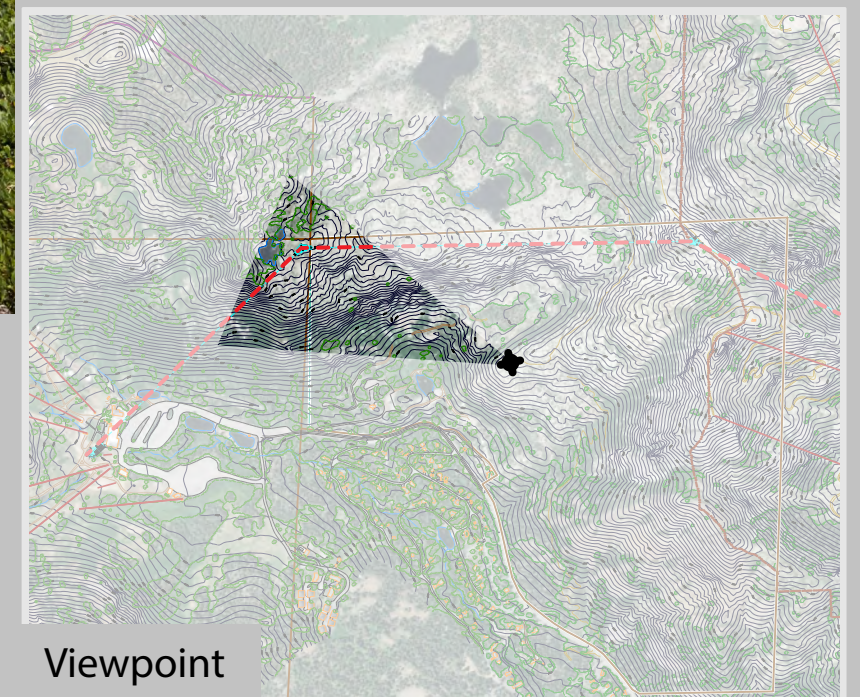
September 2018

**VIEW 11  
FIVE LAKES TRAIL  
WATER BREAK HILL  
ALTERNATIVE 2**

**SIMULATED CONDITIONS**

B2B GONDOLA EIS

FIGURE D-11b



Viewpoint





Alternative 3

Viewpoint Details

Viewpoint elevation = 7,163'

Photograph taken by Grant Kaye using a Canon EOS 5D Mark III camera on 08/17/2017 at 11:16 am, with a 42mm focal length to emulate the human eye.

Prepared By:



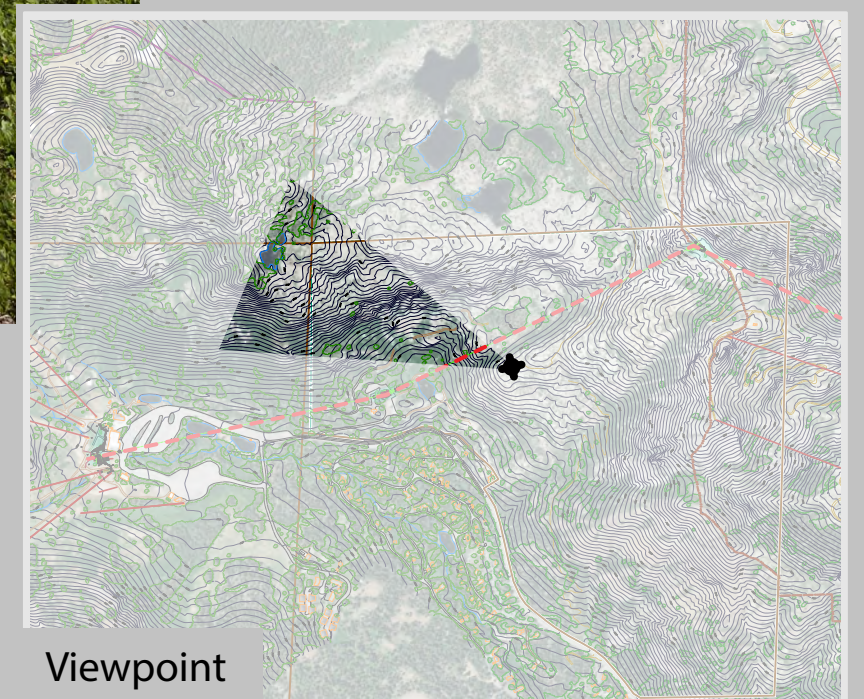
September 2018

**VIEW11  
FIVE LAKES TRAIL  
WATER BREAK HILL  
ALTERNATIVE 3**

**SIMULATED CONDITIONS**

B2B GONDOLA EIS

FIGURE D-11c



Viewpoint





**VIEW 11**  
**FIVE LAKES TRAIL**  
**WATER BREAK HILL**  
**ALTERNATIVE 4**  
**SIMULATED CONDITIONS**  
B2B GONDOLA EIS      FIGURE D-11d

**Alternative 4**

*Viewpoint Details*

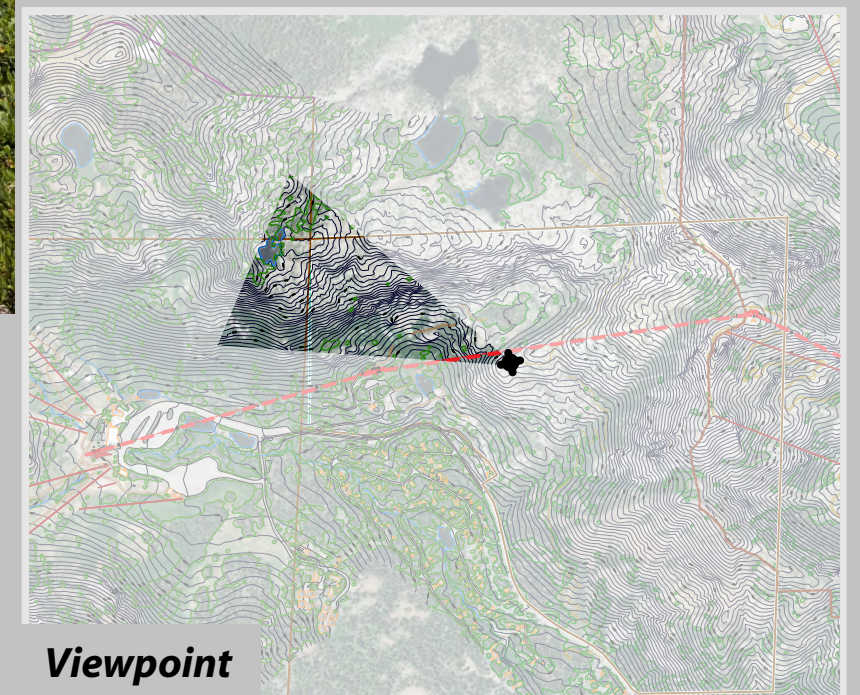
*Viewpoint elevation = 7,163'*

*Photograph taken by Grant Kaye using a Canon EOS 5D Mark III camera on 08/17/2017 at 11:16 am, with a 42mm focal length to emulate the human eye.*

Prepared By:



September 2018



**Viewpoint**



**Photo Location #12**





Existing Conditions

Viewpoint Details

Viewpoint elevation = 7,491'

Photograph taken by Grant Kaye using a Canon EOS 5D Mark III camera on 08/14/2016 at 12:23 pm, with a 42mm focal length to emulate the human eye.

Prepared By:

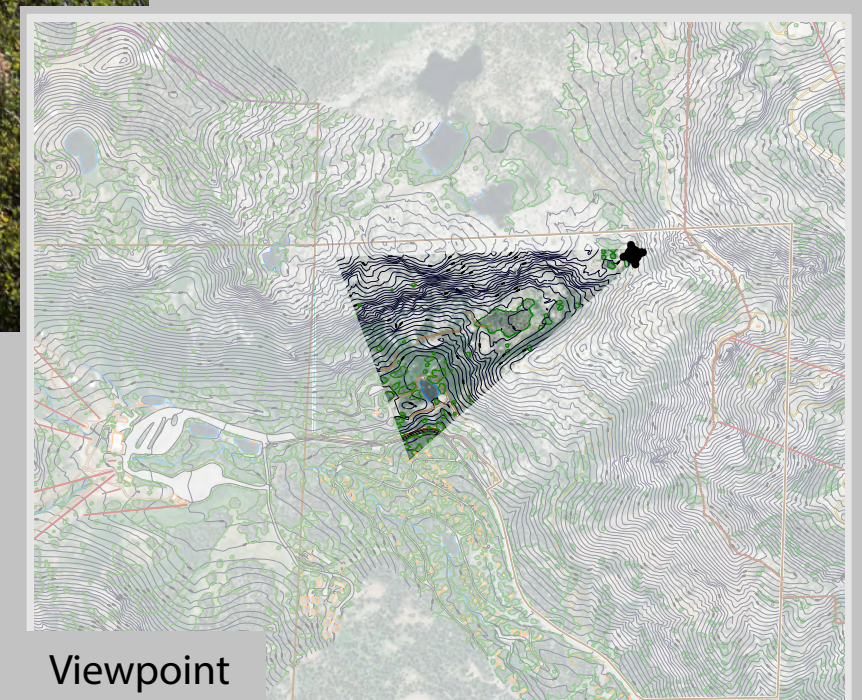


September 2018

**VIEW 12**  
**FIVE LAKES TRAIL**  
**WILDERNESS BOUNDARY**  
**EXISTING CONDITIONS**

B2B GONDOLA EIS

FIGURE D-12a



Viewpoint





Alternative 2

#### Viewpoint Details

Viewpoint elevation = 7,491'

Photograph taken by Grant Kaye using a Canon EOS 5D Mark III camera on 08/14/2016 at 12:23 pm, with a 42mm focal length to emulate the human eye.

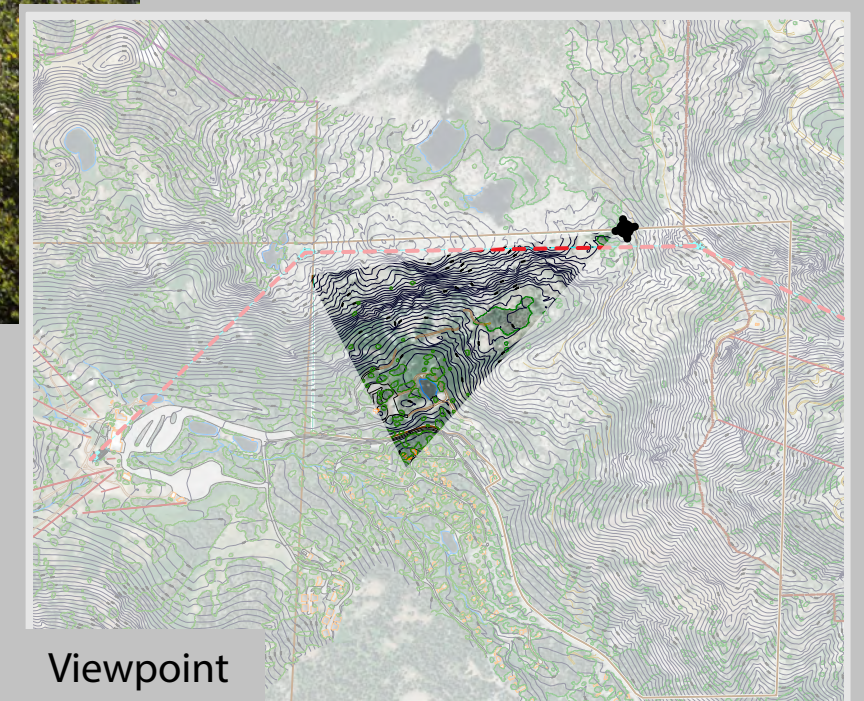
Prepared By:



September 2018



## VIEW 12 FIVE LAKES TRAIL WILDERNESS BOUNDARY ALTERNATIVE 2 SIMULATED CONDITIONS B2B GONDOLA EIS      FIGURE D-12b



Viewpoint





Alternative 3

*Viewpoint Details*

*Viewpoint elevation = 7,491'*

*Photograph taken by Grant Kaye using a Canon EOS 5D Mark III camera on 08/14/2016 at 12:23 pm, with a 42mm focal length to emulate the human eye.*

Prepared By:



September 2018

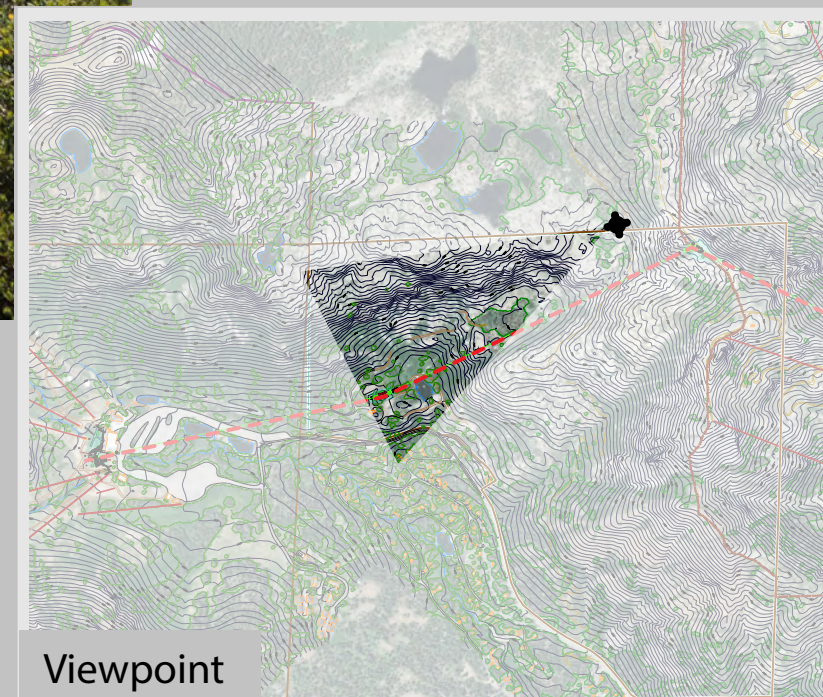


**VIEW 12  
FIVE LAKES TRAIL  
WILDERNESS BOUNDARY  
ALTERNATIVE 3**

**SIMULATED CONDITIONS**

B2B GONDOLA EIS

FIGURE D-12c



Viewpoint





Alternative 4

*Viewpoint Details*

*Viewpoint elevation = 7,491'*

*Photograph taken by Grant Kaye using a Canon EOS 5D Mark III camera on 08/14/2016 at 12:23 pm, with a 42mm focal length to emulate the human eye.*

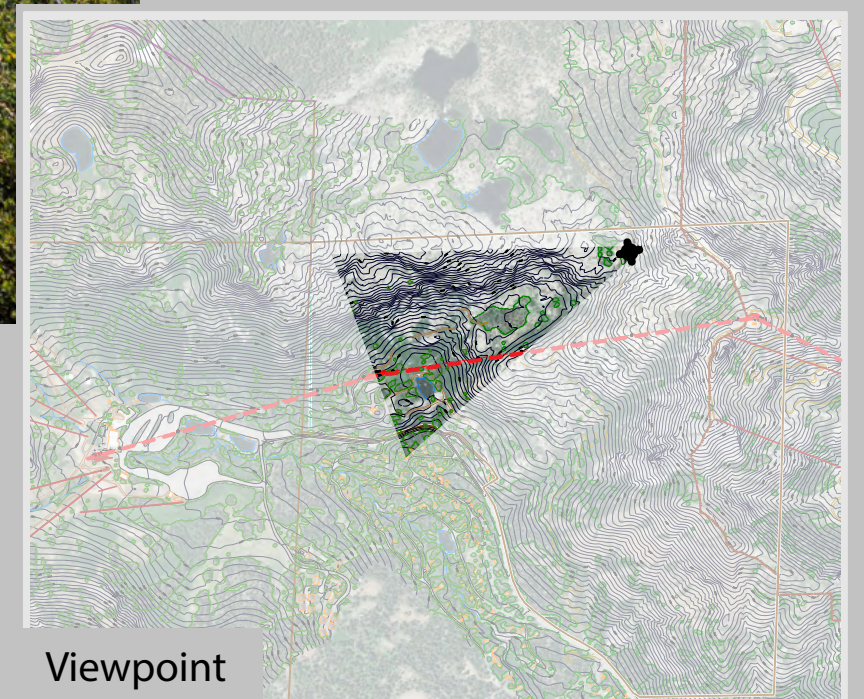
Prepared By:



September 2018



**VIEW 12**  
**FIVE LAKES TRAIL**  
**WILDERNESS BOUNDARY**  
**ALTERNATIVE 4**  
**SIMULATED CONDITIONS**  
B2B GONDOLA EIS      FIGURE D-12d



Viewpoint



## **Photo Location #13**





Existing Conditions

#### Viewpoint Details

Viewpoint elevation = 7,491'

Photograph taken by Grant Kaye using a Canon EOS 5D Mark III camera on 08/14/2016 at 12:23 pm, with a 42mm focal length to emulate the human eye.

Prepared By:

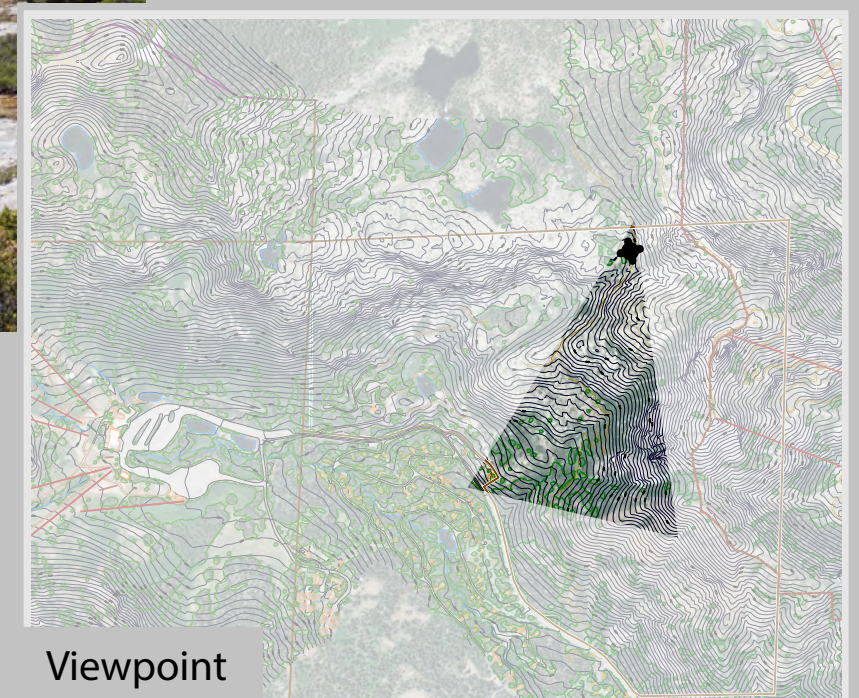


September 2018

## **VIEW 13 FIVE LAKES TRAIL WILDERNESS BOUNDARY EXISTING CONDITIONS**

B2B GONDOLA EIS

FIGURE D-13a



Viewpoint





**VIEW 13**  
**FIVE LAKES TRAIL**  
**WILDERNESS BOUNDARY**  
**ALTERNATIVE 2**  
**SIMULATED CONDITIONS**  
 B2B GONDOLA EIS      FIGURE D-13b

Alternative 2

Viewpoint Details

Viewpoint elevation = 7,491'

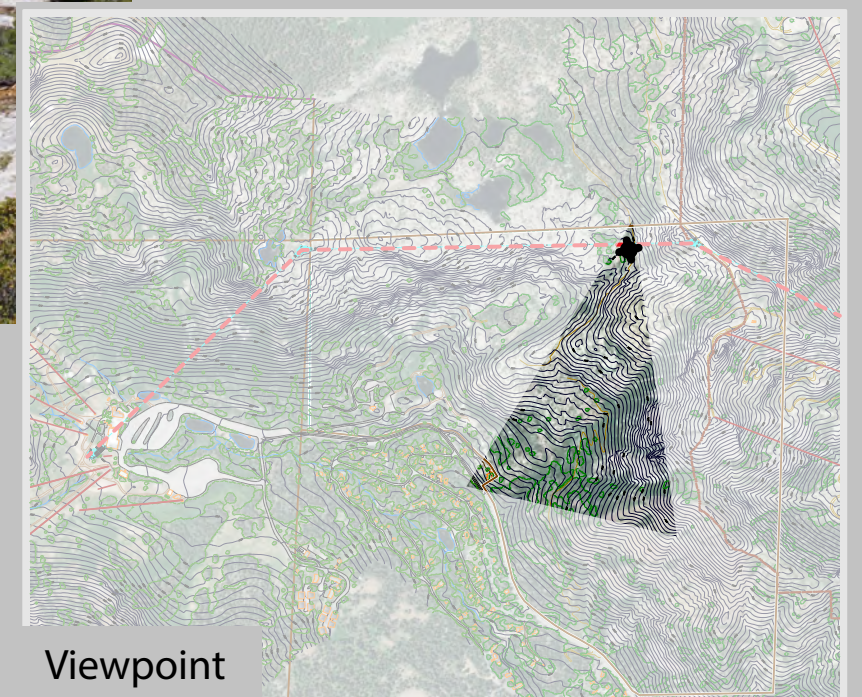
Photograph taken by Grant Kaye using a Canon EOS 5D Mark III camera on 08/14/2016 at 12:23 pm, with a 42mm focal length to emulate the human eye.

Prepared By:



September 2018

*Note: Proposed gondola alignment passes directly overhead*



Viewpoint





**VIEW 13**  
**FIVE LAKES TRAIL**  
**WILDERNESS BOUNDARY**  
**ALTERNATIVE 3**

**SIMULATED CONDITIONS**  
 B2B GONDOLA EIS      FIGURE D-13c

Alternative 3

*Viewpoint Details*

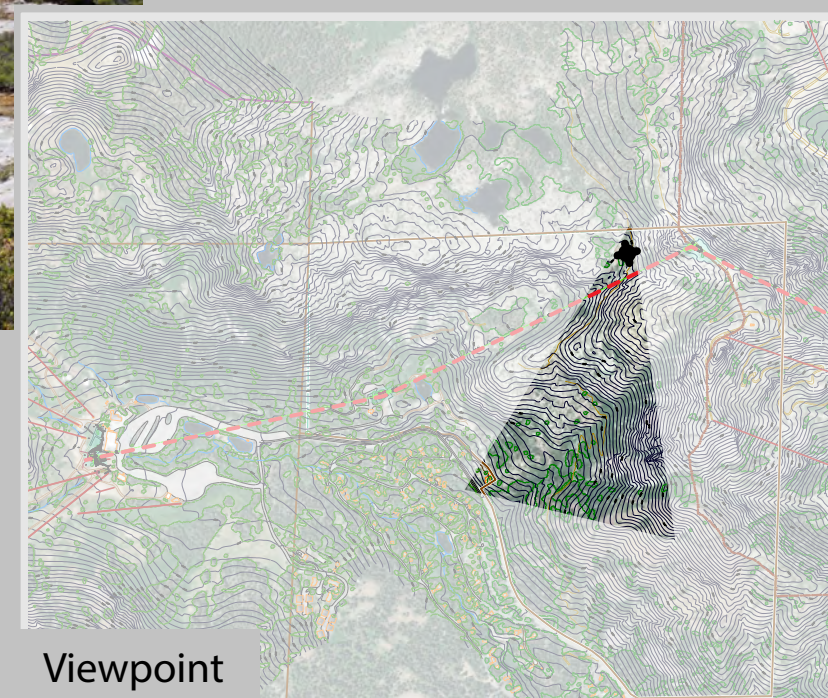
*Viewpoint elevation = 7,491'*

*Photograph taken by Grant Kaye using a Canon EOS 5D Mark III camera on 08/14/2016 at 12:23 pm, with a 42mm focal length to emulate the human eye.*

Prepared By:



September 2018



Viewpoint





**VIEW 13**  
**FIVE LAKES TRAIL**  
**WILDERNESS BOUNDARY**  
**ALTERNATIVE 4**  
**SIMULATED CONDITIONS**  
 B2B GONDOLA EIS      FIGURE D-13d

Alternative 4

*Viewpoint Details*

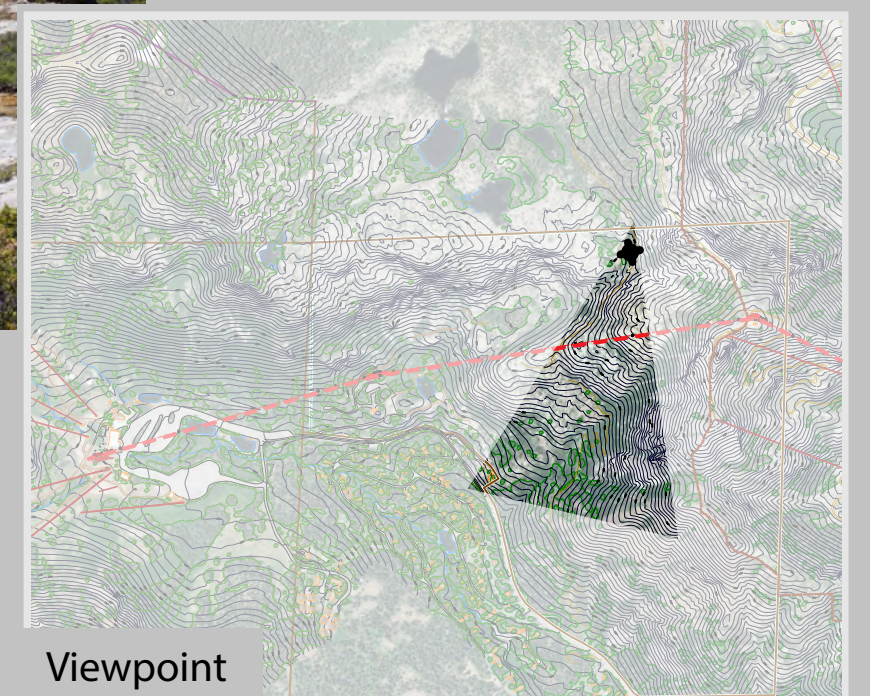
Viewpoint elevation = 7,491'

Photograph taken by Grant Kaye using a Canon EOS 5D Mark III camera on 08/14/2016 at 12:23 pm, with a 42mm focal length to emulate the human eye.

Prepared By:



September 2018



Viewpoint



**Photo Location #14**



**VIEW 14**  
**FIVE LAKES**  
**GRANITE CHIEF WILDERNESS**  
**EXISTING CONDITIONS**

B2B GONDOLA EIS

FIGURE D-14a



Existing Conditions

*Viewpoint Details*

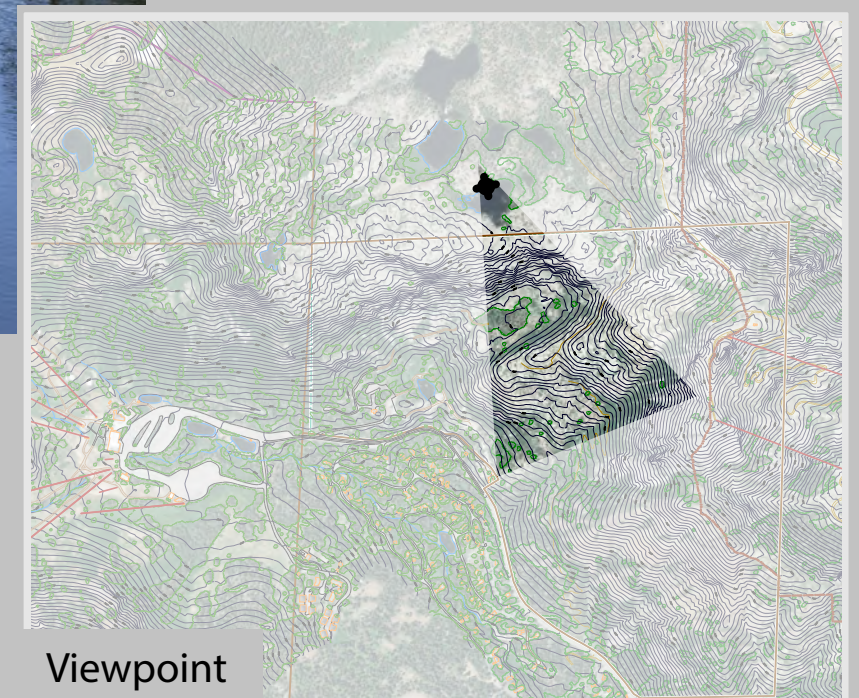
*Viewpoint elevation = 7,546'*

*Photograph taken by Grant Kaye using a Canon EOS 5D Mark III camera on 09/18/2015 at 11:34 am, with a 42mm focal length to emulate the human eye.*

Prepared By:



September 2018



Viewpoint





**VIEW 14**  
**FIVE LAKES**  
**GRANITE CHIEF WILDERNESS**  
**ALTERNATIVE 2**

**SIMULATED CONDITIONS**  
B2B GONDOLA EIS      FIGURE D-14b

Alternative 2

*Viewpoint Details*

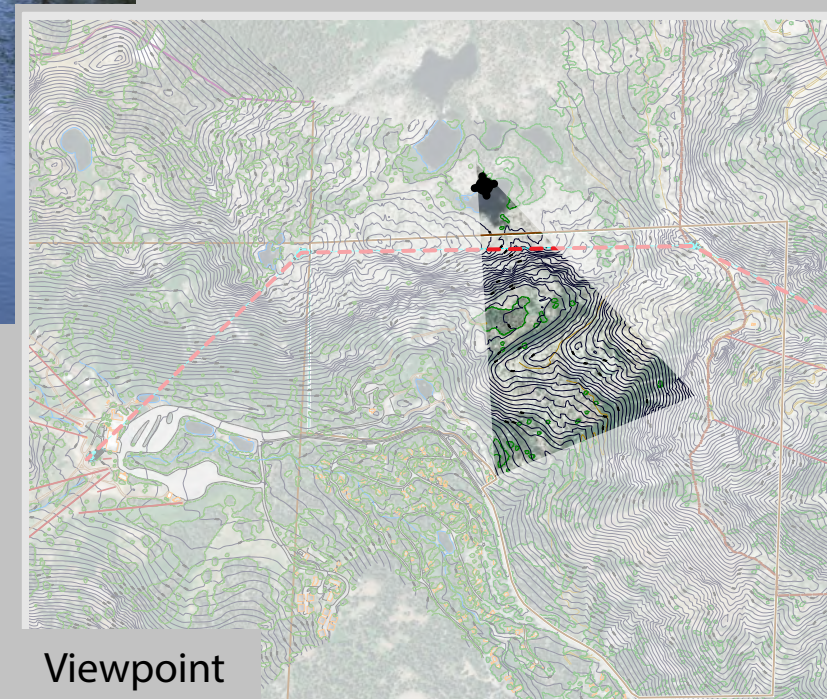
*Viewpoint elevation = 7,546'*

*Photograph taken by Grant Kaye using a Canon EOS 5D Mark III camera on 09/18/2015 at 11:34 am, with a 42mm focal length to emulate the human eye.*

Prepared By:



September 2018



Viewpoint





**VIEW 14**  
**FIVE LAKES**  
**GRANITE CHIEF WILDERNESS**  
**ALTERNATIVE 3**

**SIMULATED CONDITIONS**  
B2B GONDOLA EIS      FIGURE D-14c

Alternative 3

Viewpoint Details

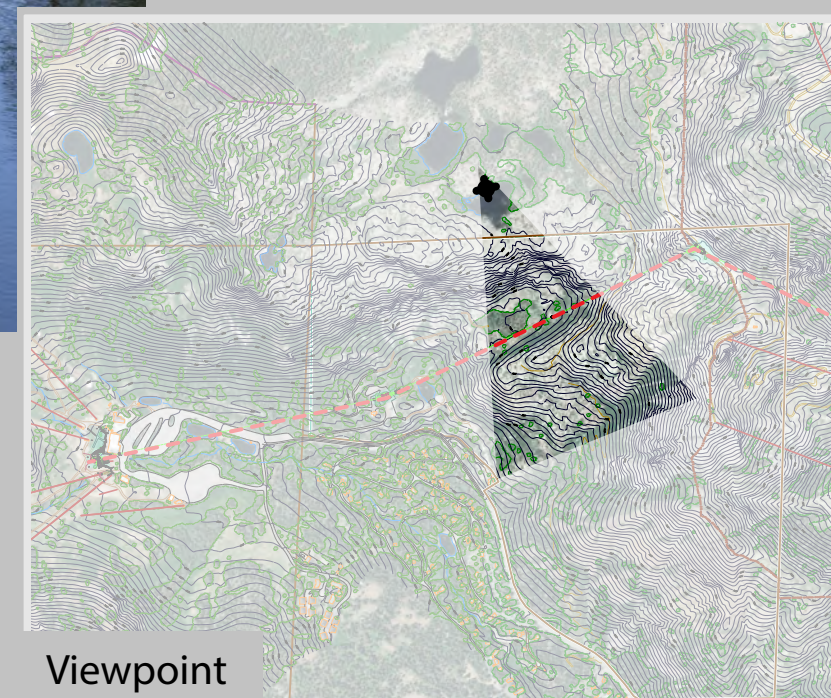
Viewpoint elevation = 7,546'

Photograph taken by Grant Kaye using a Canon EOS 5D Mark III camera on  
09/18/2015 at 11:34 am, with a 42mm focal length to emulate the human eye.

Prepared By:



September 2018



Viewpoint





**VIEW 14**  
**FIVE LAKES**  
**GRANITE CHIEF WILDERNESS**  
**ALTERNATIVE 4**

**SIMULATED CONDITIONS**  
B2B GONDOLA EIS      FIGURE D-14d

Alternative 4

*Viewpoint Details*

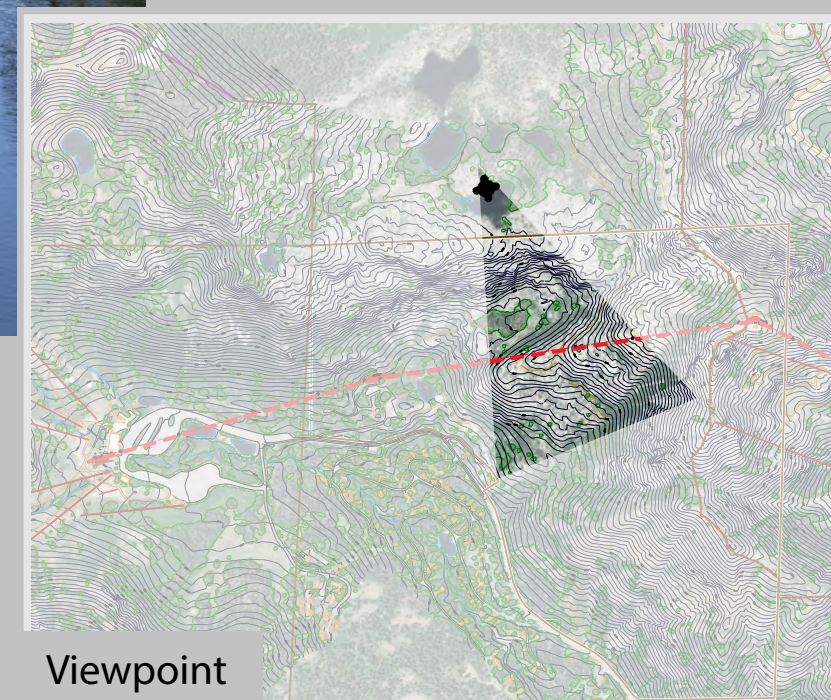
*Viewpoint elevation = 7,546'*

*Photograph taken by Grant Kaye using a Canon EOS 5D Mark III camera on  
09/18/2015 at 11:34 am, with a 42mm focal length to emulate the human eye.*

Prepared By:



September 2018



Viewpoint



**Photo Location #15**





Existing Conditions

*Viewpoint Details*

*Viewpoint elevation = 7,755'*

*Photograph taken by Grant Kaye using a Canon EOS 5D Mark III camera on 08/14/2016 at 11:23 am, with a 42mm focal length to emulate the human eye.*

Prepared By:

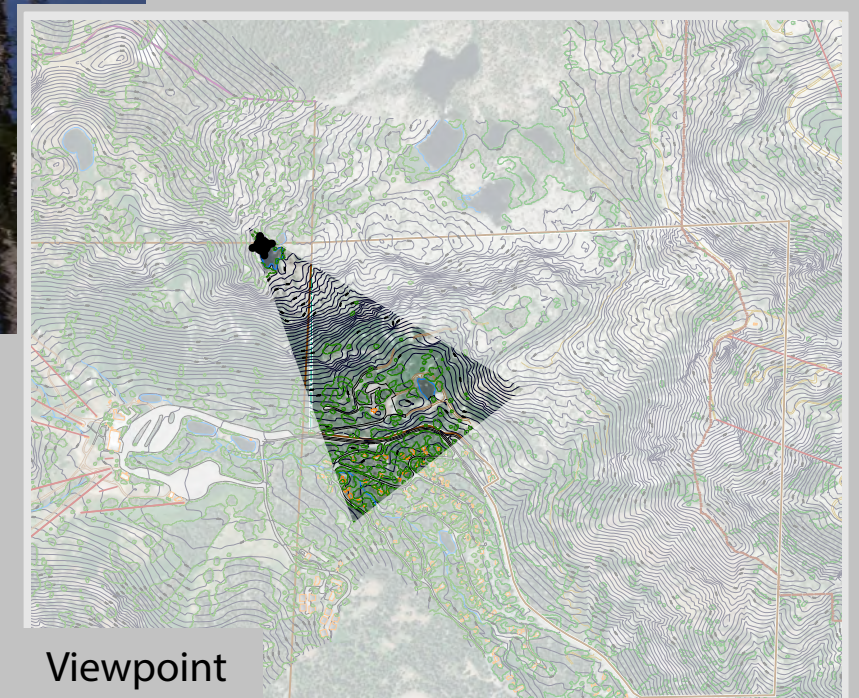


September 2018

**VIEW 15  
BARSTOOL LAKE  
EXISTING CONDITIONS**

B2B GONDOLA EIS

FIGURE D-15a



Viewpoint





Alternative 2

*Viewpoint Details*

*Viewpoint elevation = 7,755'*

*Photograph taken by Grant Kaye using a Canon EOS 5D Mark III camera on 08/14/2016 at 11:23 am, with a 42mm focal length to emulate the human eye.*

Prepared By:

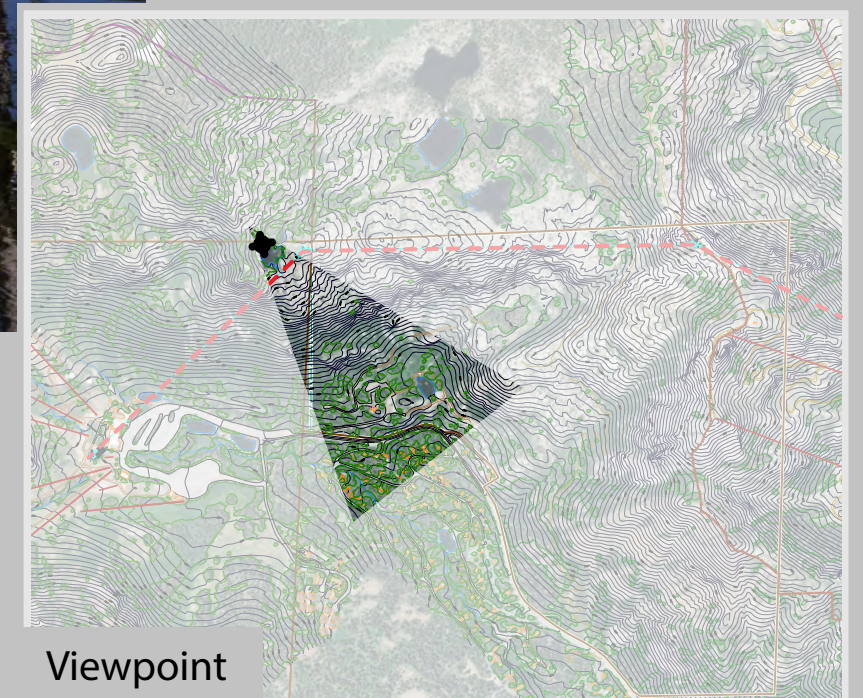


September 2018

**VIEW 15**  
**BARSTOOL LAKE**  
**ALTERNATIVE 2**  
**SIMULATED CONDITIONS**

B2B GONDOLA EIS

FIGURE D-15b



Viewpoint





Alternative 3

*Viewpoint Details*

*Viewpoint elevation = 7,755'*

*Photograph taken by Grant Kaye using a Canon EOS 5D Mark III camera on 08/14/2016 at 11:23 am, with a 42mm focal length to emulate the human eye.*

Prepared By:

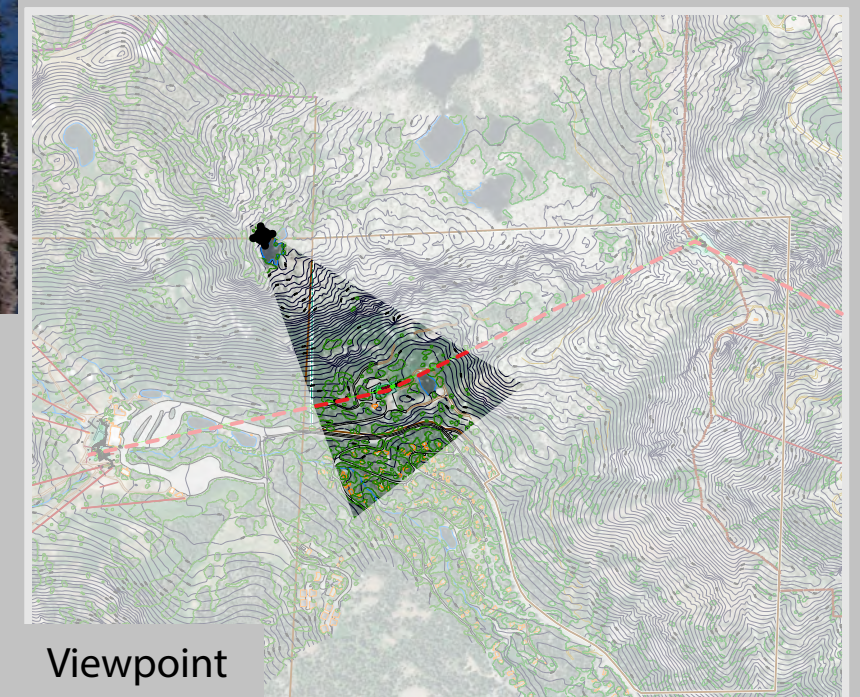


September 2018

**VIEW 15**  
**BARSTOOL LAKE**  
**ALTERNATIVE 3**  
**SIMULATED CONDITIONS**

B2B GONDOLA EIS

FIGURE D-15c



Viewpoint





Alternative 4

*Viewpoint Details*

*Viewpoint elevation = 7,755'*

*Photograph taken by Grant Kaye using a Canon EOS 5D Mark III camera on 08/14/2016 at 11:23 am, with a 42mm focal length to emulate the human eye.*

Prepared By:



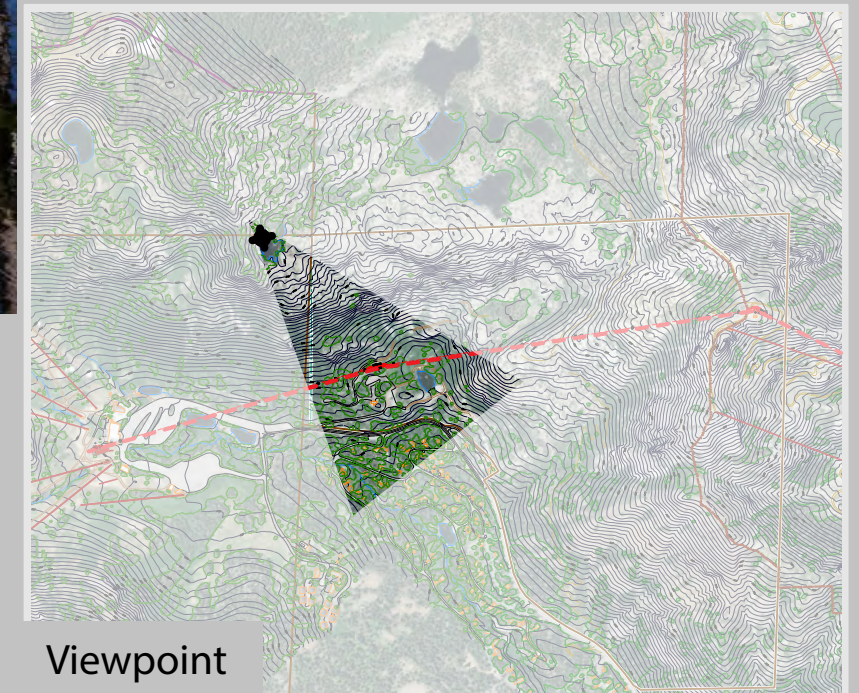
September 2018



**VIEW 15  
BARSTOOL LAKE  
ALTERNATIVE 4  
SIMULATED CONDITIONS**

B2B GONDOLA EIS

FIGURE D-15d



Viewpoint